

V&V Reference Report

L2 ASCDS Version : 8.4.5

Observation 3711 - L2 Version 3
Chandra X-Ray Center

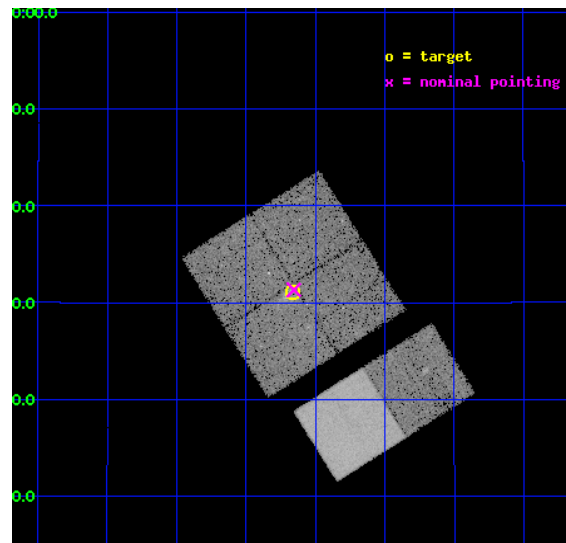
L2 Processing Date : Oct 9 2012

Contents

1	Front	2
2	OBI	3
2.1	OBI	3
2.1.1	Images	3
2.1.2	Bias	3
2.1.3	Parameters	4
2.1.4	Events	4
2.2	Compared Parameters	5
2.3	Aspect	6
2.4	Star Slots	9
2.4.1	Slot 3	9
2.4.2	Slot 4	10
2.4.3	Slot 5	11
2.4.4	Slot 6	12
2.4.5	Slot 7	13
2.5	FID Slots	14
2.5.1	Slot 0	14
2.5.2	Slot 1	15
2.5.3	Slot 2	16
A	Summary	17
A.1	Status	17
A.2	Comments	17

1 Front

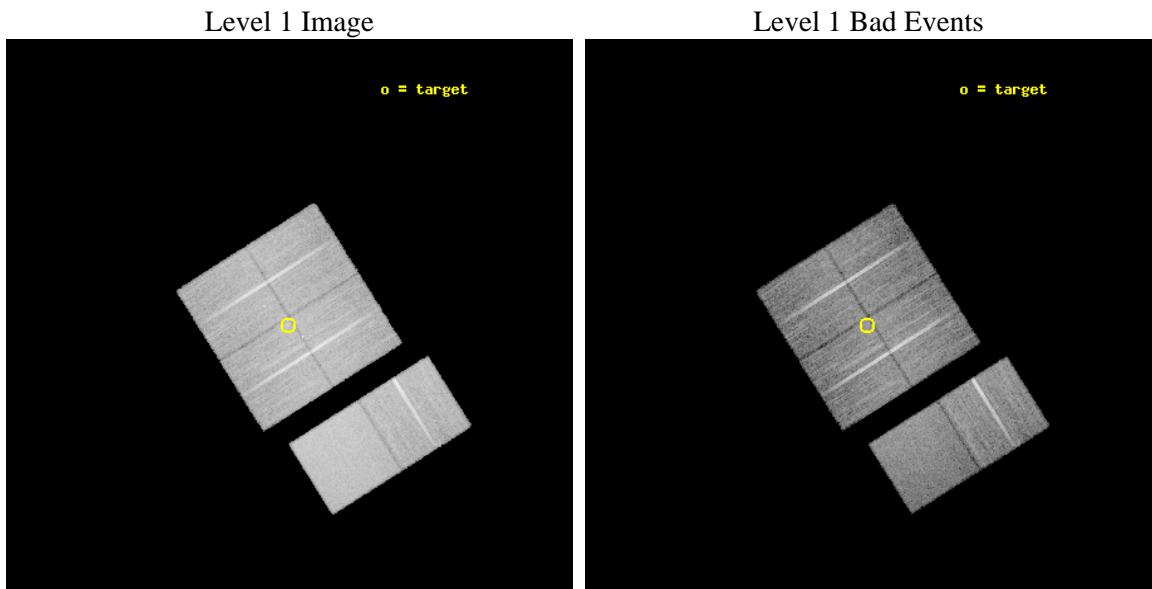
seq_num	200132	Sequence number
obs_id	3711	Observation id
title	VIOLENT MASSIVE STAR FORMATION IN THE GALAXY: W51 ALTERNATE TARGET	
observer	Professor Gordon Garmire	Principal investigator
object	W51	Source name
dtcycle	0	
cycle	P	events from which exps? Prim/Second/Both
ra_targ	290.916667	Observer's specified target RA [deg]
dec_targ	14.518333	Observer's specified target Dec [deg]
ra_nom	290.91388070034	Nominal RA [deg]
dec_nom	14.52216939626	Nominal Dec [deg]
roll_nom	147.83638614361	Nominal Roll [deg]
revision	3	Processing version of data
ontime	19462.399927497	Sum of GTIs [s]
livetime	19215.955300765	Livetime [s]
ontime0	19462.399927497	Sum of GTIs [s]
ontime1	19462.399927497	Sum of GTIs [s]
ontime2	19462.399927497	Sum of GTIs [s]
ontime3	19462.399927497	Sum of GTIs [s]
ontime6	19459.158957243	Sum of GTIs [s]
ontime7	19462.399927497	Sum of GTIs [s]
l2events	137091	Number of level 2 events



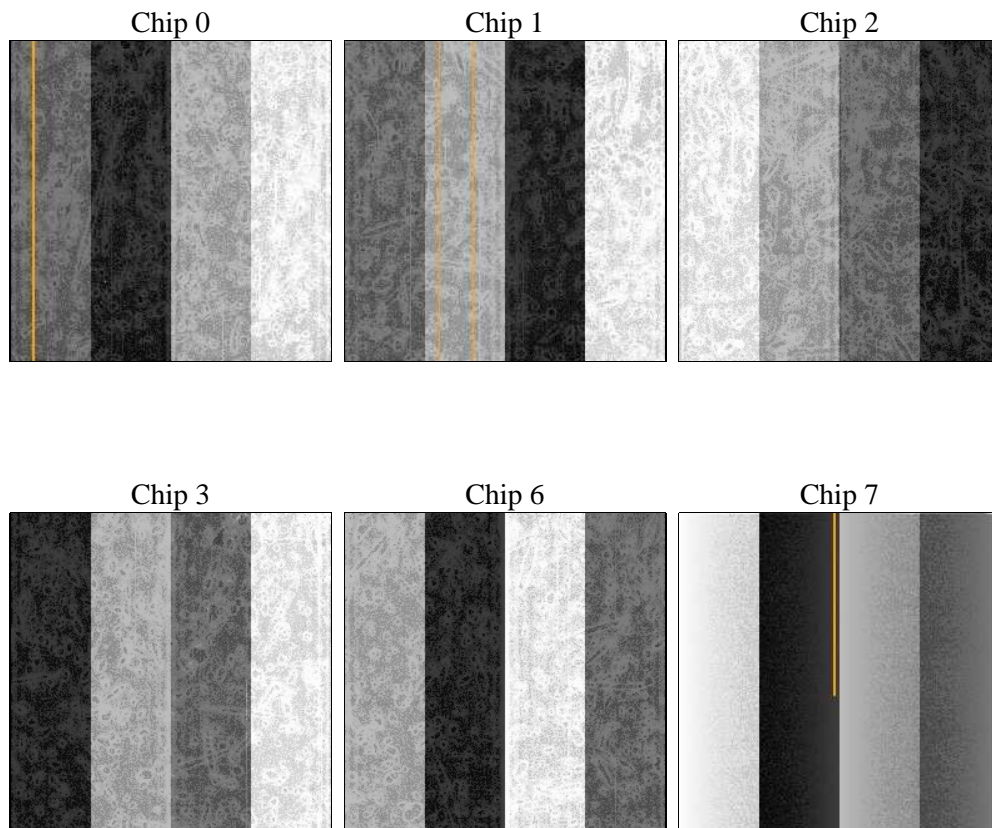
2 OBI

2.1 OBI

2.1.1 Images



2.1.2 Bias



2.1.3 Parameters

obi_num	0	Obi number	sched_exp_time	19500.000000	[s] Scheduled observation exposure time
ascdsver	8.4.5	Processing system revision	ontime	19462.399927497	Sum of GTIs [s]
caldsver	4.5.2	 	ontime0	19462.399927497	Sum of GTIs [s]
date	2012-10-09T05:28:42	Date and time of file creation	ontime1	19462.399927497	Sum of GTIs [s]
revision	3	Processing version of data	ontime2	19462.399927497	Sum of GTIs [s]
			ontime3	19462.399927497	Sum of GTIs [s]
			ontime6	19459.158957243	Sum of GTIs [s]
			ontime7	19462.399927497	Sum of GTIs [s]
			l1events	781057	Number of level 1 events

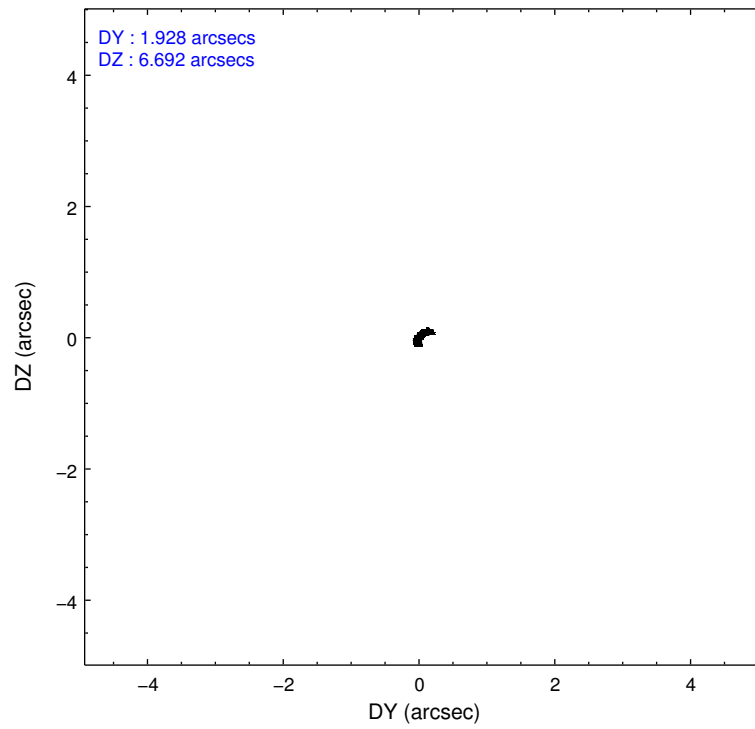
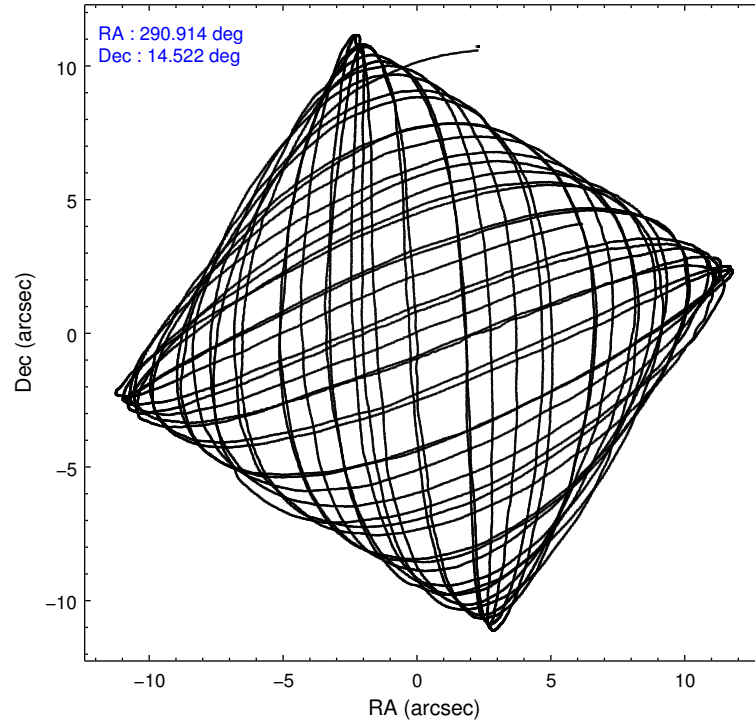
2.1.4 Events

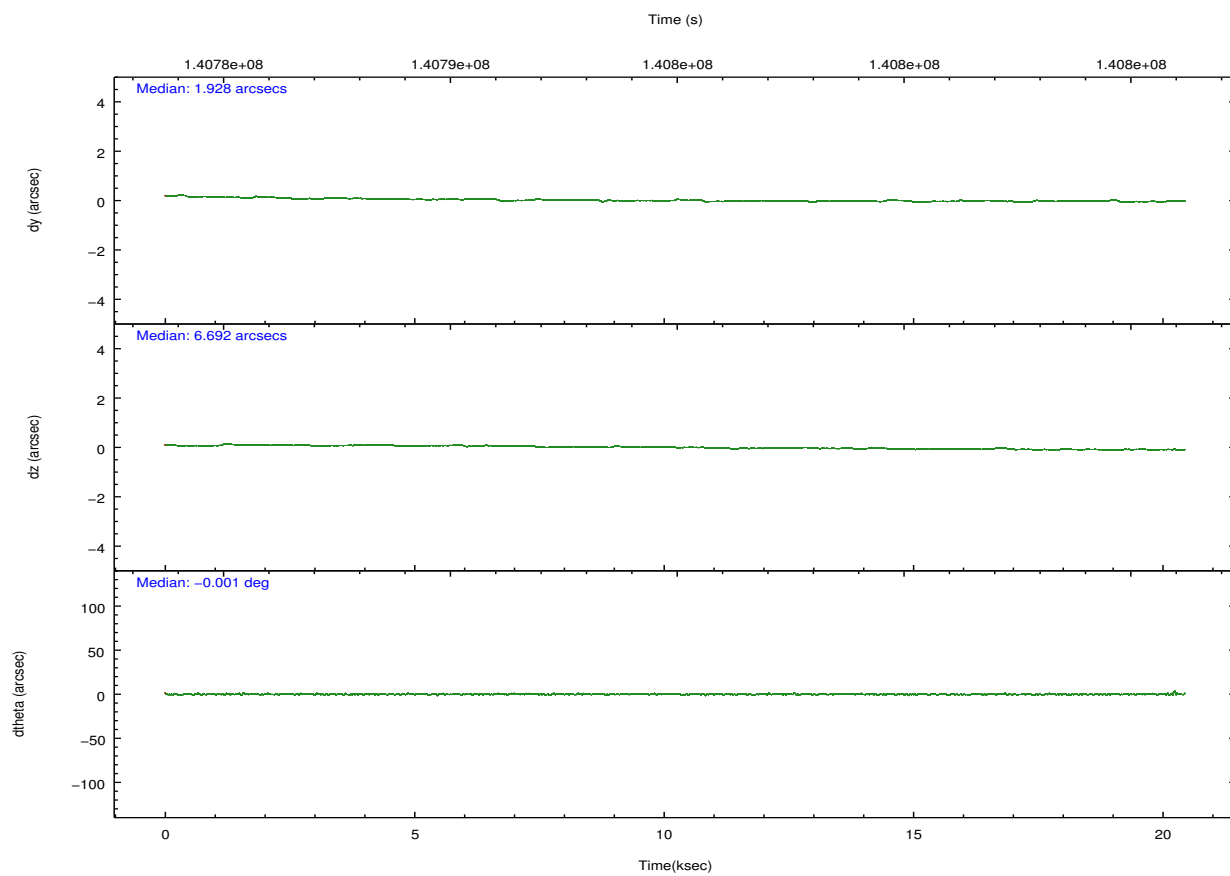
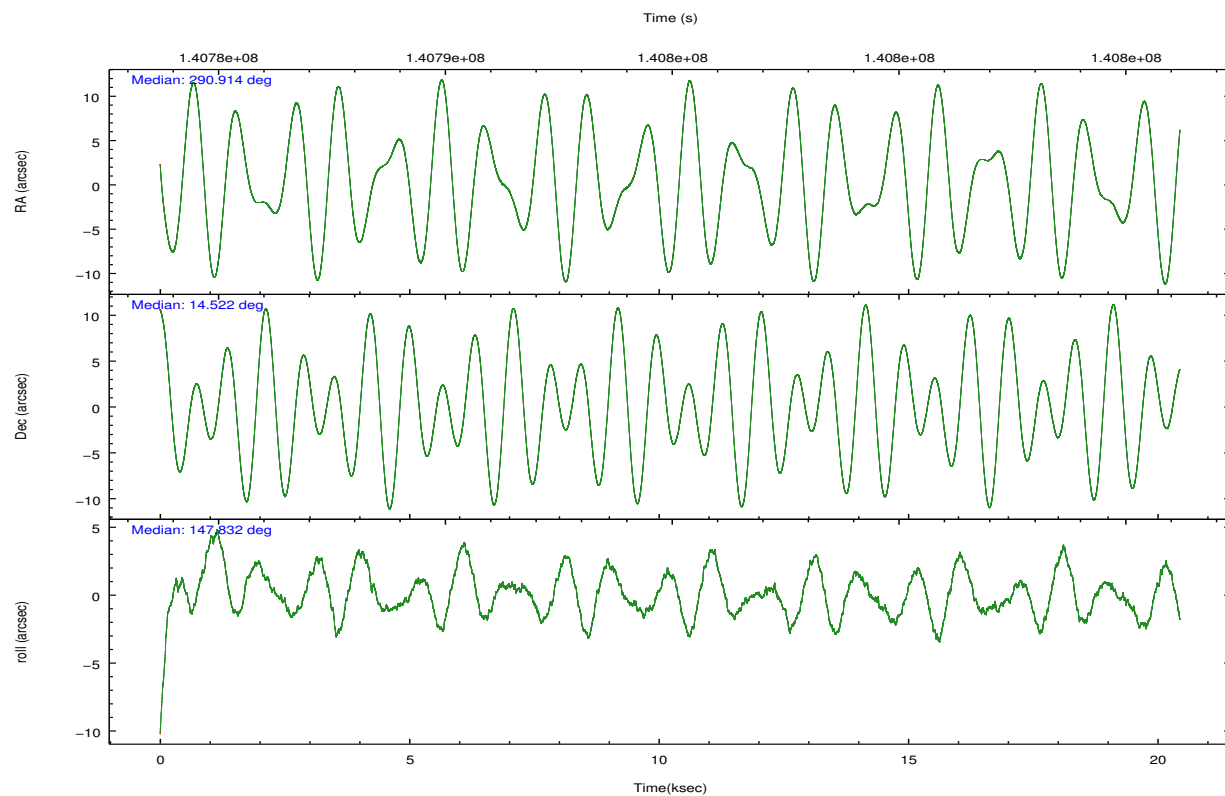
	ccd 0	ccd 1	ccd 2	ccd 3	ccd 6	ccd 7		ccd 0	ccd 1	ccd 2	ccd 3	ccd 6	ccd 7
level 1 events	113461	115319	127791	125250	132379	166857	grade 0 events	6394	6861	6866	7296	6480	6879
rejected events	98356	98927	112304	109278	116703	96120		5%	5%	5%	5%	4%	4%
rejected %	86%	85%	87%	87%	88%	57%	grade 1 events	56	61	78	63	70	148
								0%	0%	0%	0%	0%	0%
							grade 2 events	3285	3271	3226	3121	3240	14290
								2%	2%	2%	2%	2%	8%
							grade 3 events	1460	1640	1444	1488	1479	6434
								1%	1%	1%	1%	1%	3%
							grade 4 events	1398	1606	1364	1401	1436	6371
								1%	1%	1%	1%	1%	3%
							grade 5 events	4722	5039	4473	5090	5716	15959
								4%	4%	3%	4%	4%	9%
							grade 6 events	2574	3020	2594	2673	3047	36791
								2%	2%	2%	2%	2%	22%
							grade 7 events	93572	93821	107746	104118	110911	79985
								82%	81%	84%	83%	83%	47%

2.2 Compared Parameters

Parameter	Planned	Actual	Parameter	Planned	Actual
Instrument	ACIS	ACIS	Obspar format version number	7	7
Detector	ACIS-012367	ACIS-012367	Obspar file type	PREDICTED	ACTUAL
Grating	NONE	NONE	Obspar update status	NONE	UPDATED
Data mode	FAINT	FAINT	Number of optional ACIS chips dropped	0	0
Observation mode	POINTING	POINTING	On-chip summing requested	N	N
[deg] Pointing RA	290.942199	290.9138807003351	Subarray requested	NONE	NONE
[deg] Pointing Dec	14.521210	14.52216939625967	Alternating exposures requested	N	N
[deg] Pointing Roll	147.620592	147.8363861436057	[s] Primary exposure time	0.000000	3.2
[mm] SIM focus pos	-0.782348	-0.7809083437167272			
[mm] SIM defocus	0	0.001439871863259334			
[mm] SIM translation stage pos	-233.592463	-233.5874344608287			
[mm] SIM translation stage offset	0	-0.005018542100998502			
[s] Observation start time (MET)	140785675.184000	140784337.81453			
Observation start date	2002-06-18T11:06:51	2002-06-18T10:45:37			
[s] Observation end time (MET)	140805175.184000	140805997.60292			
Observation end date	2002-06-18T16:31:51	2002-06-18T16:46:37			
Read mode	TIMED	TIMED			

2.3 Aspect



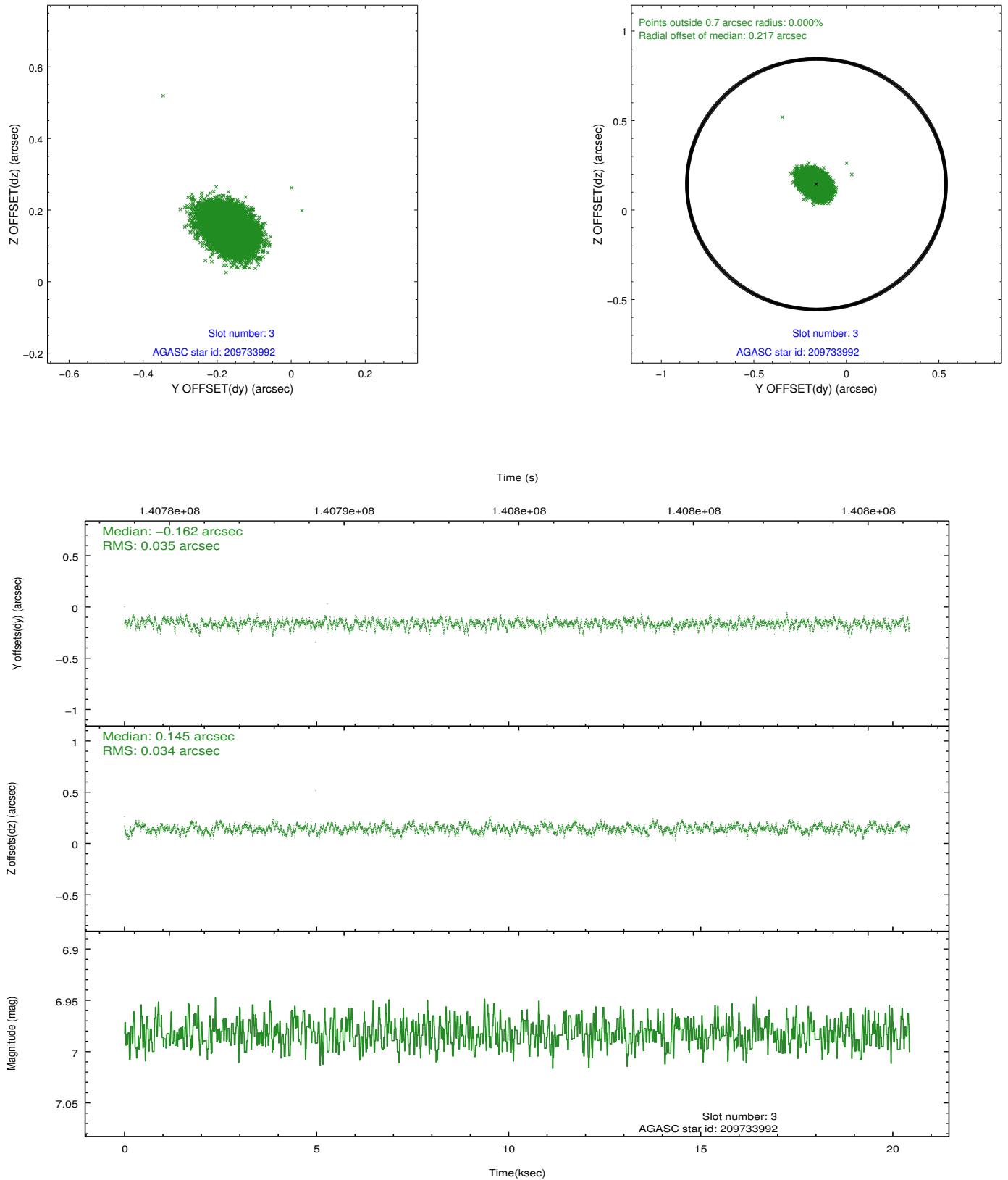


Slot Statistics

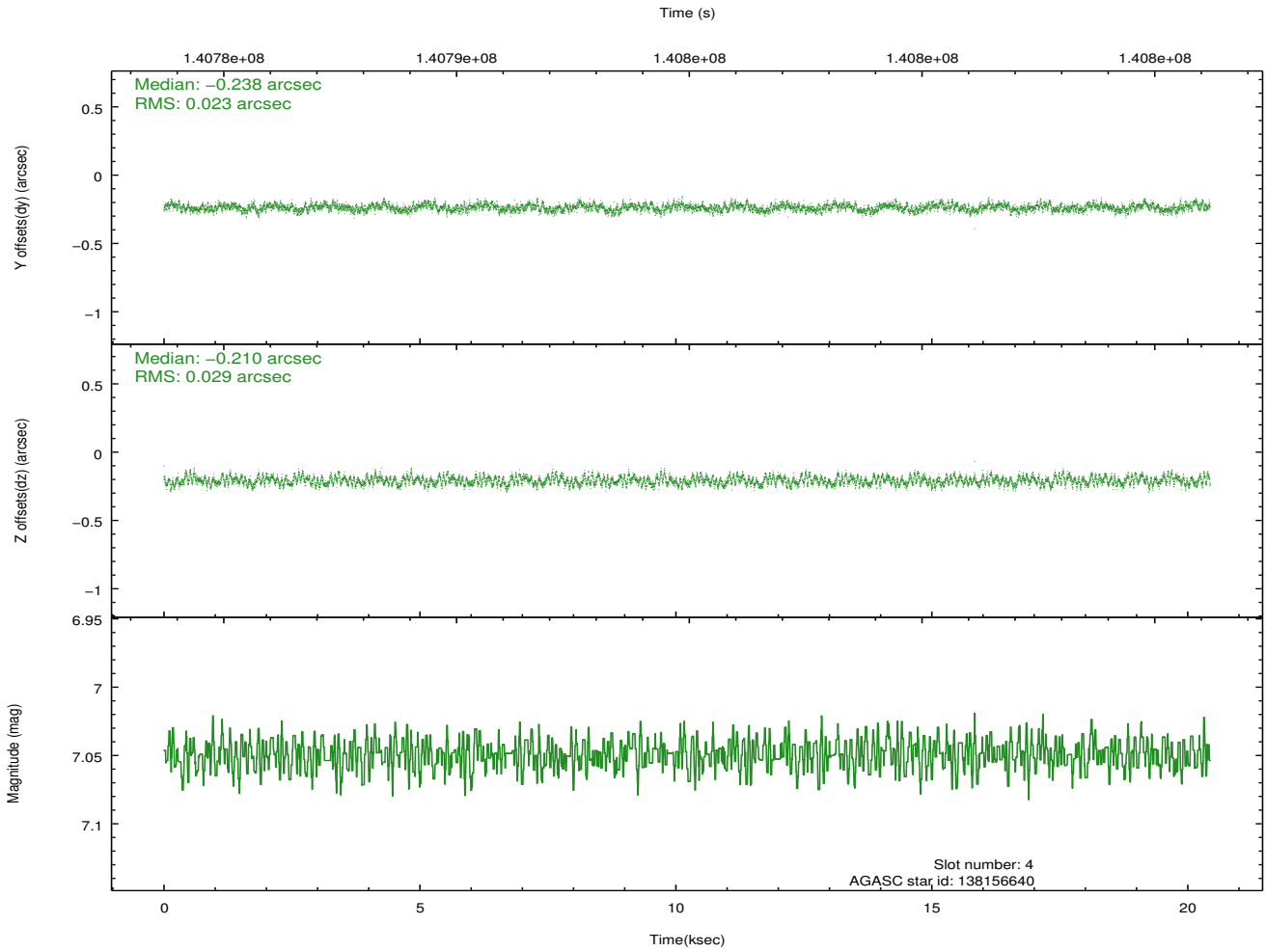
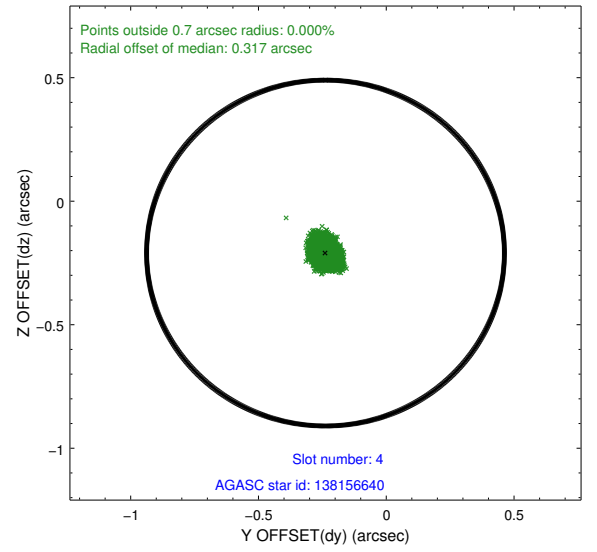
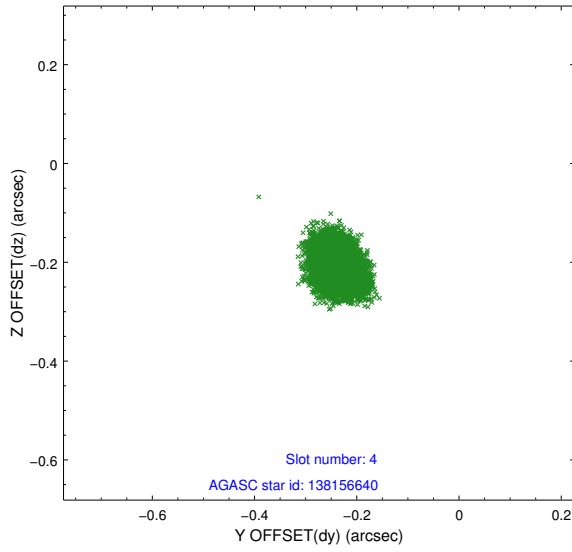
slot	status	id	mag	n_pts	med_dy	med_dz	dr1	dr2	ra	dec	mean_y	mean_z
0	FID	ACIS-I-1	7.25	4987	-0.008	0.019	0.006	0.011	0.000000	0.000000	937.84	-830.08
1	FID	ACIS-I-5	7.24	4987	-0.044	0.045	0.006	0.011	0.000000	0.000000	-1810.16	1067.41
2	FID	ACIS-I-6	7.26	4987	-0.039	0.006	0.007	0.011	0.000000	0.000000	403.22	1712.03
3	GUIDE	209733992	6.98	9973	-0.162	0.145	0.052	0.085	290.625330	15.058643	1967.15	-1044.47
4	GUIDE	138156640	7.05	9973	-0.238	-0.210	0.040	0.063	290.170188	14.419089	2079.03	1747.98
5	GUIDE	139860136	8.51	9972	0.199	-0.011	0.056	0.092	291.441042	14.451940	-1600.35	-722.24
6	GUIDE	139857944	8.30	9966	0.116	0.196	0.051	0.083	291.837429	14.751125	-2185.07	-2373.35
7	GUIDE	138155168	8.92	9970	0.086	-0.120	0.068	0.111	290.760195	14.144507	-189.37	1484.92

2.4 Star Slots

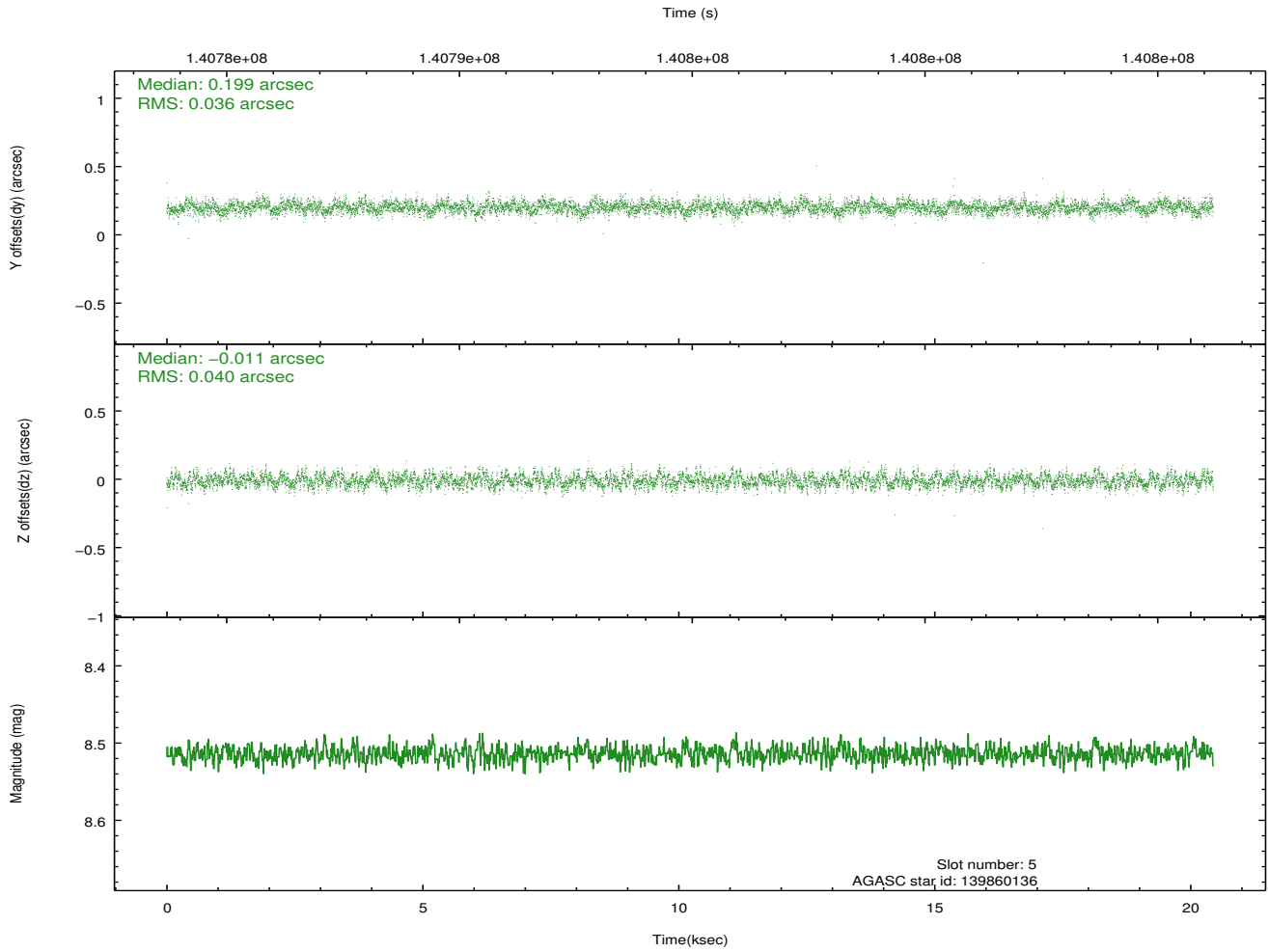
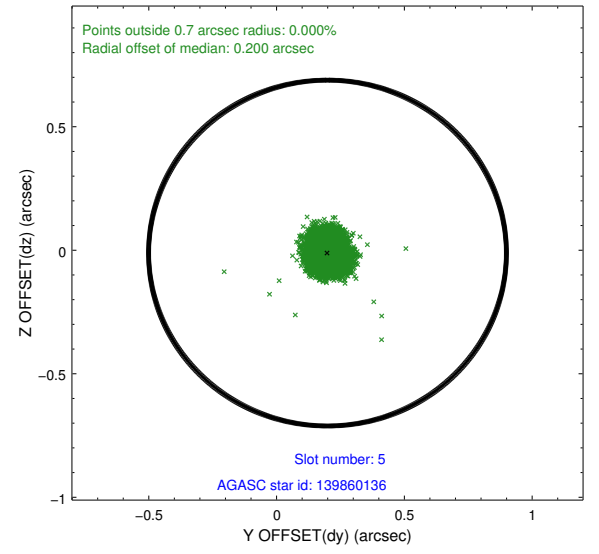
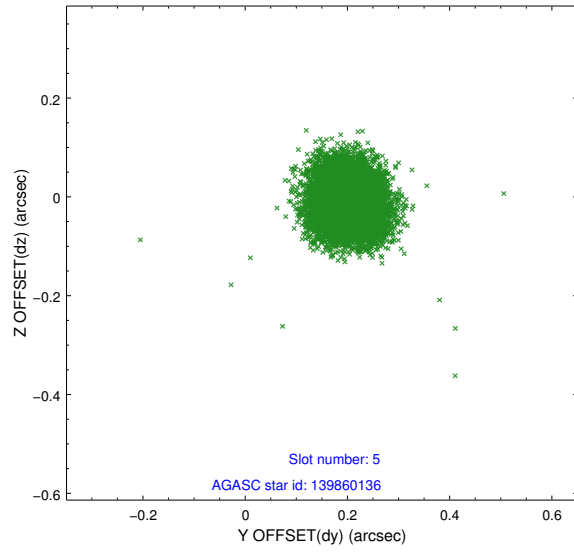
2.4.1 Slot 3



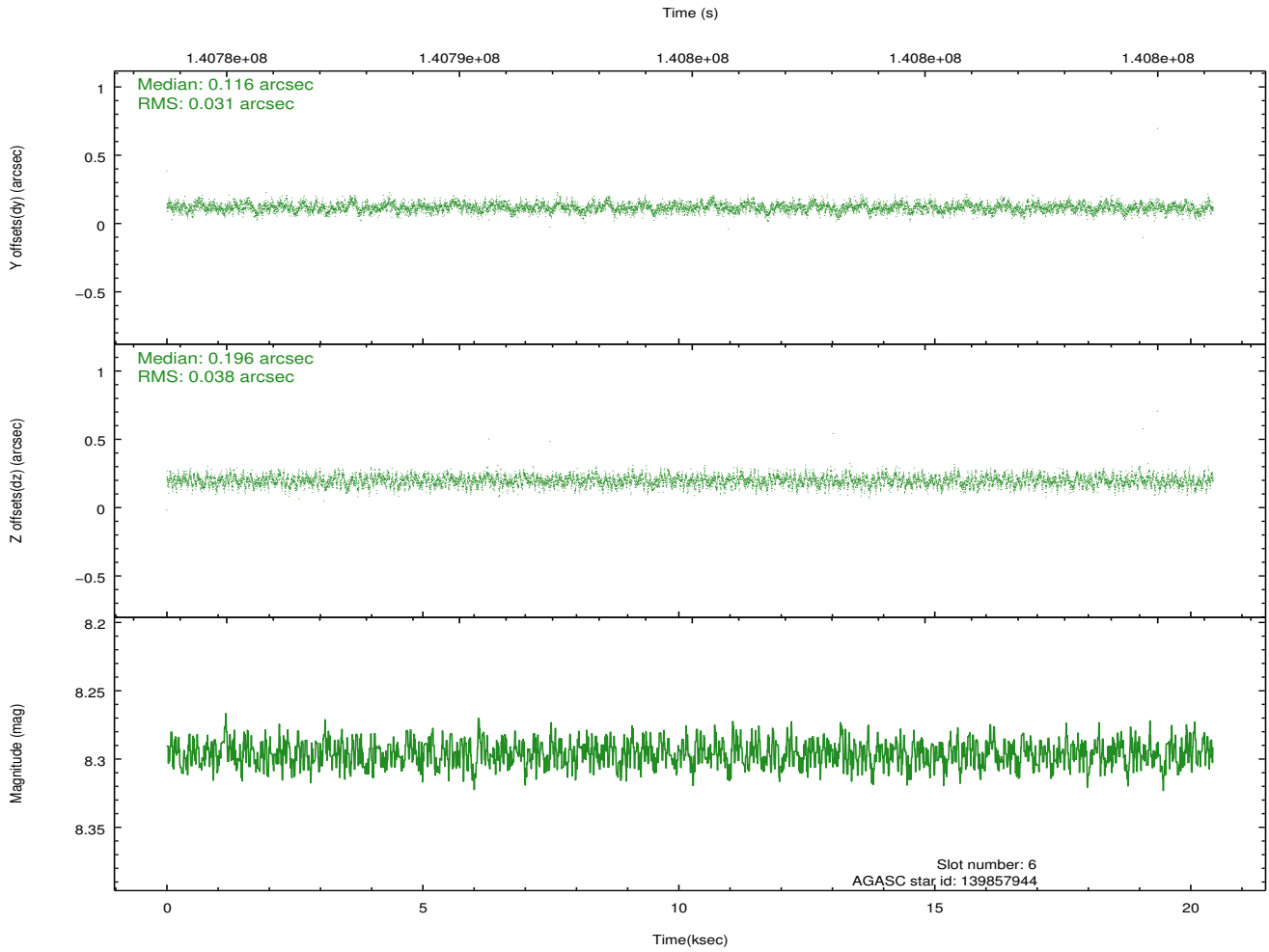
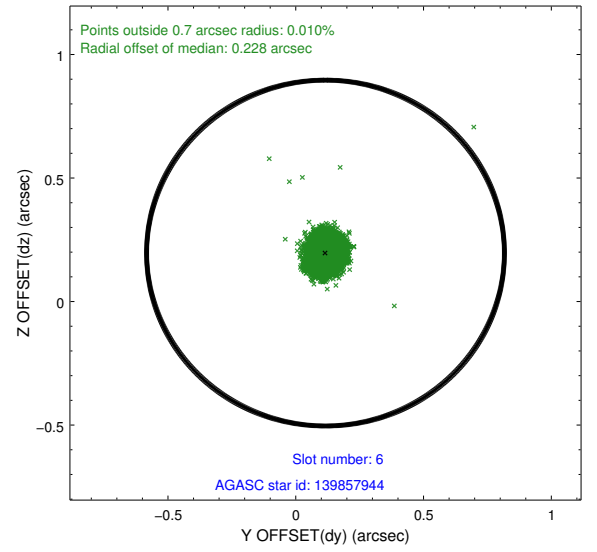
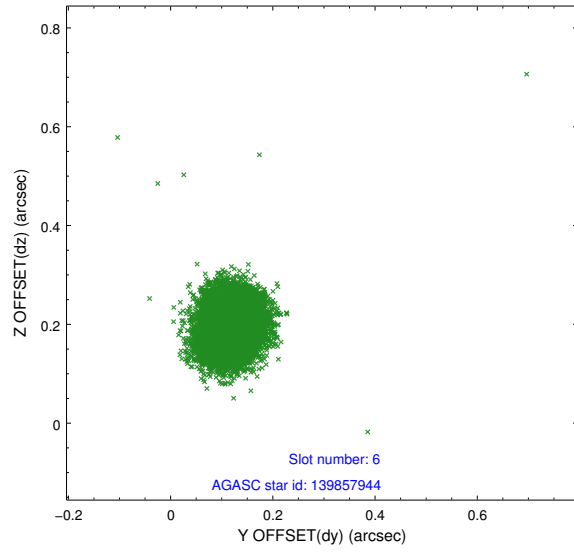
2.4.2 Slot 4



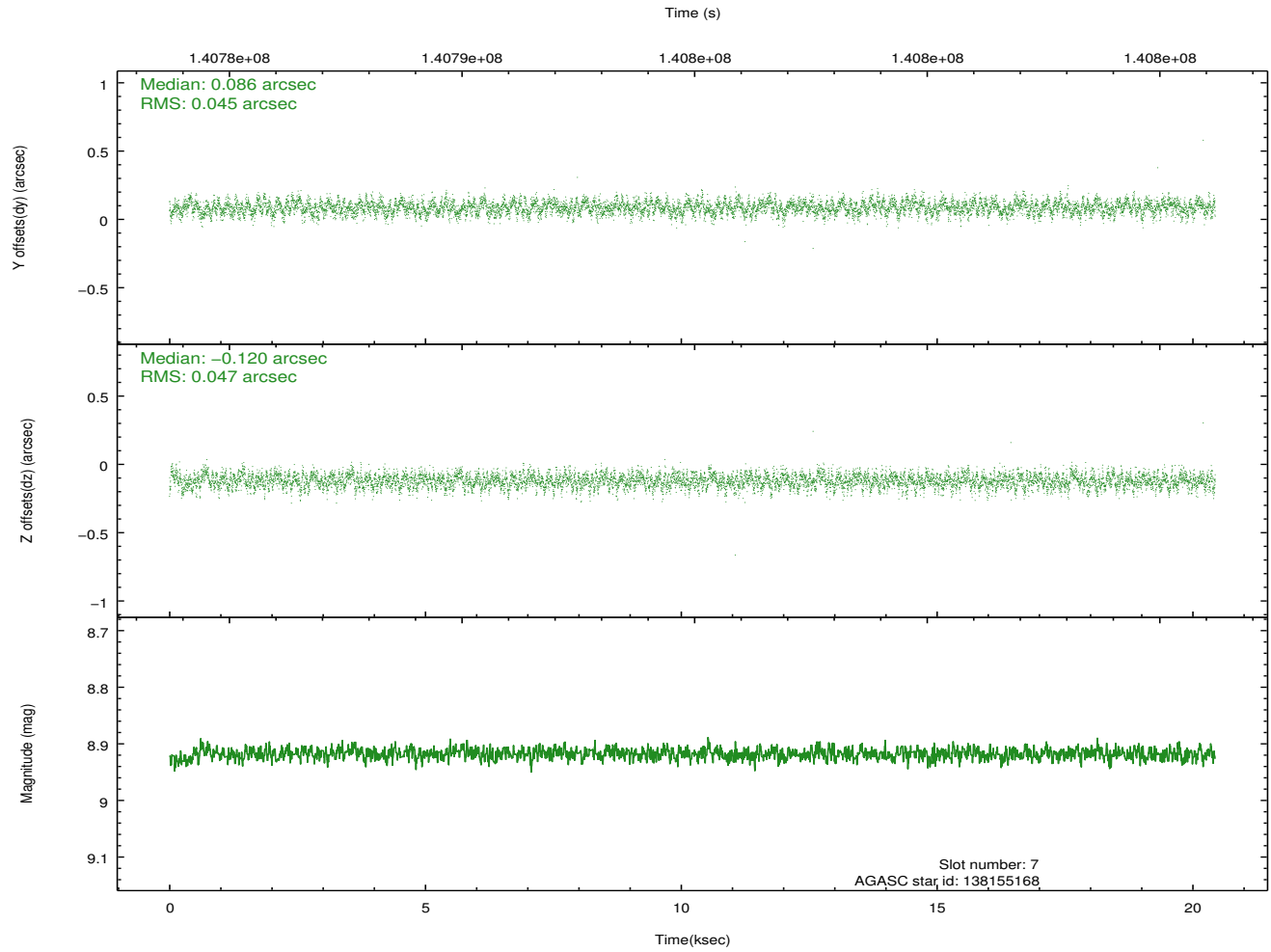
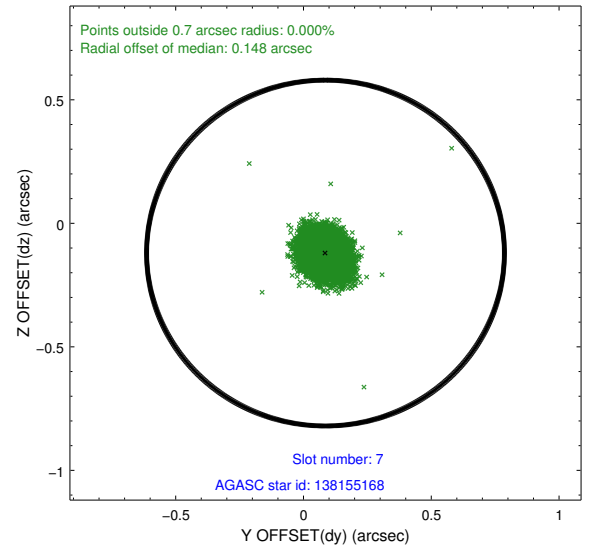
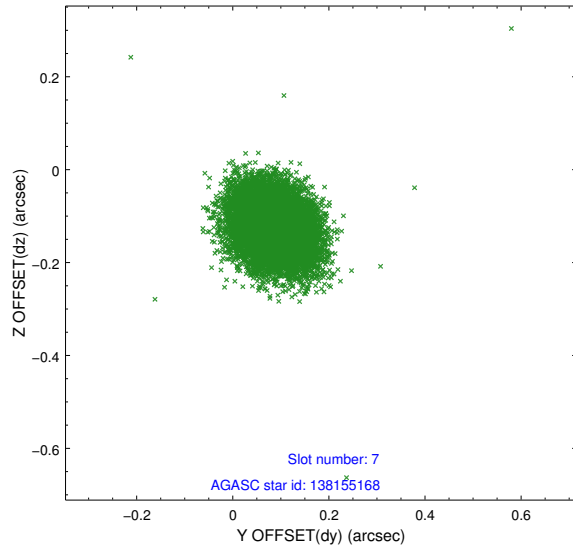
2.4.3 Slot 5



2.4.4 Slot 6

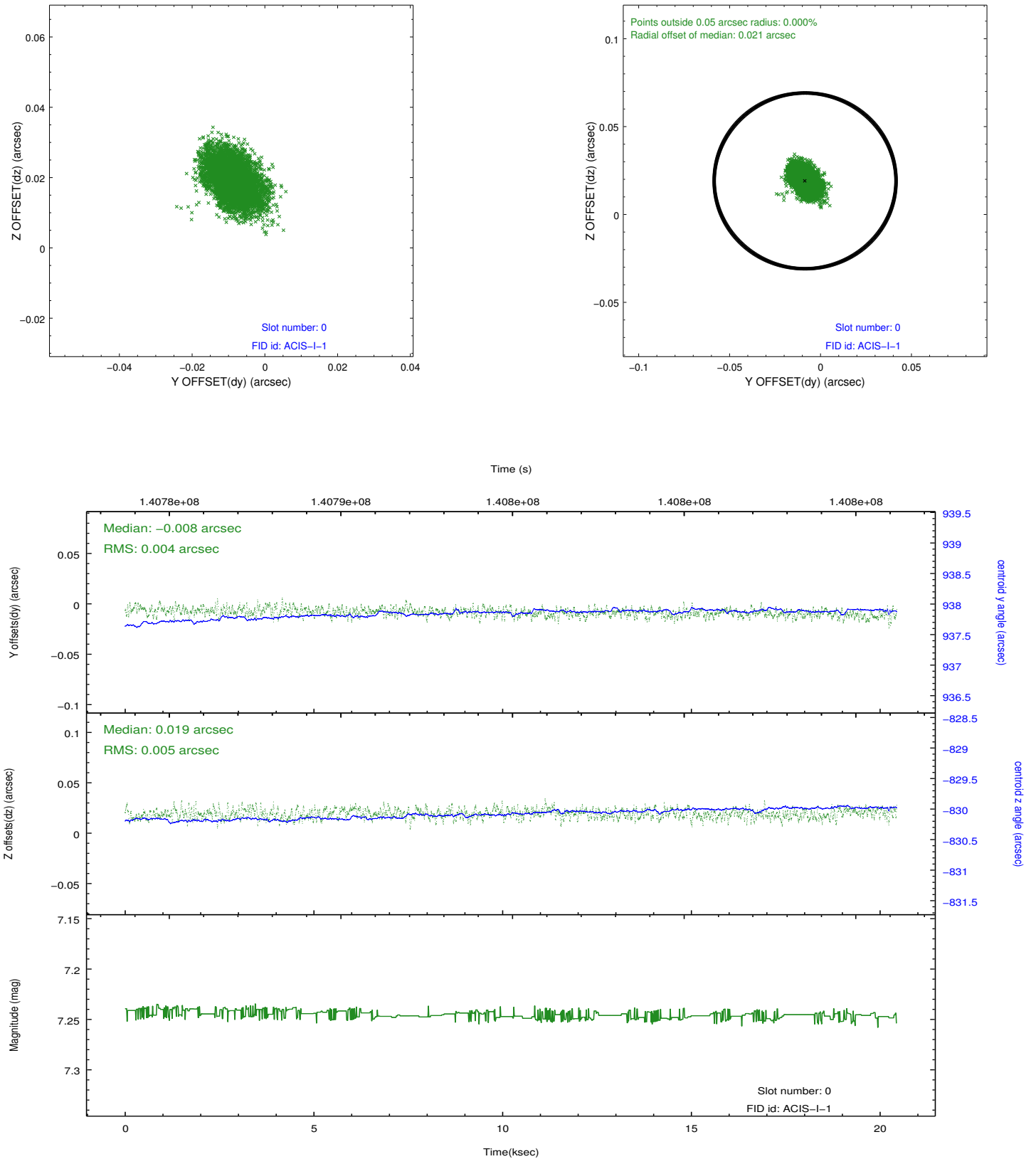


2.4.5 Slot 7

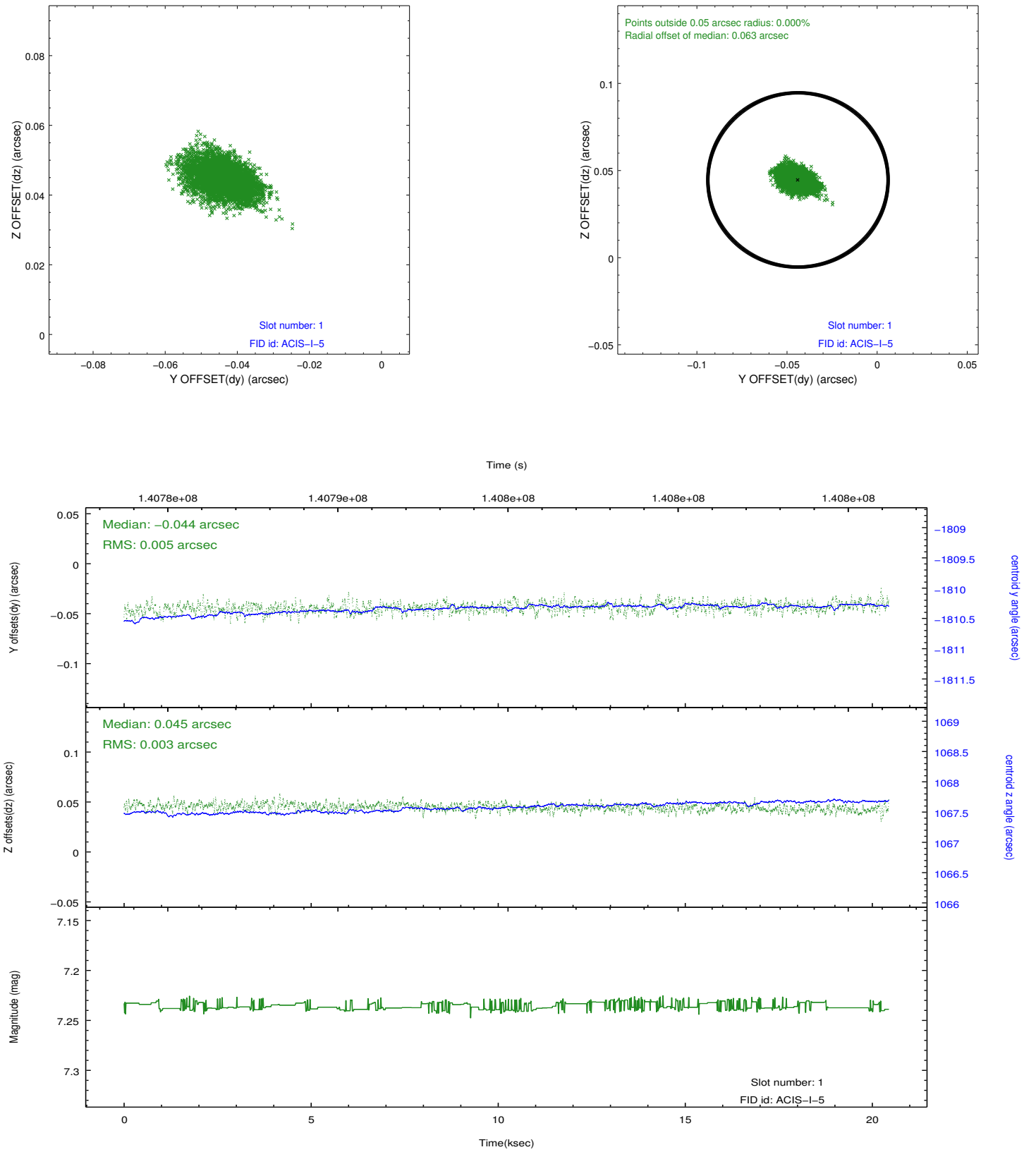


2.5 FID Slots

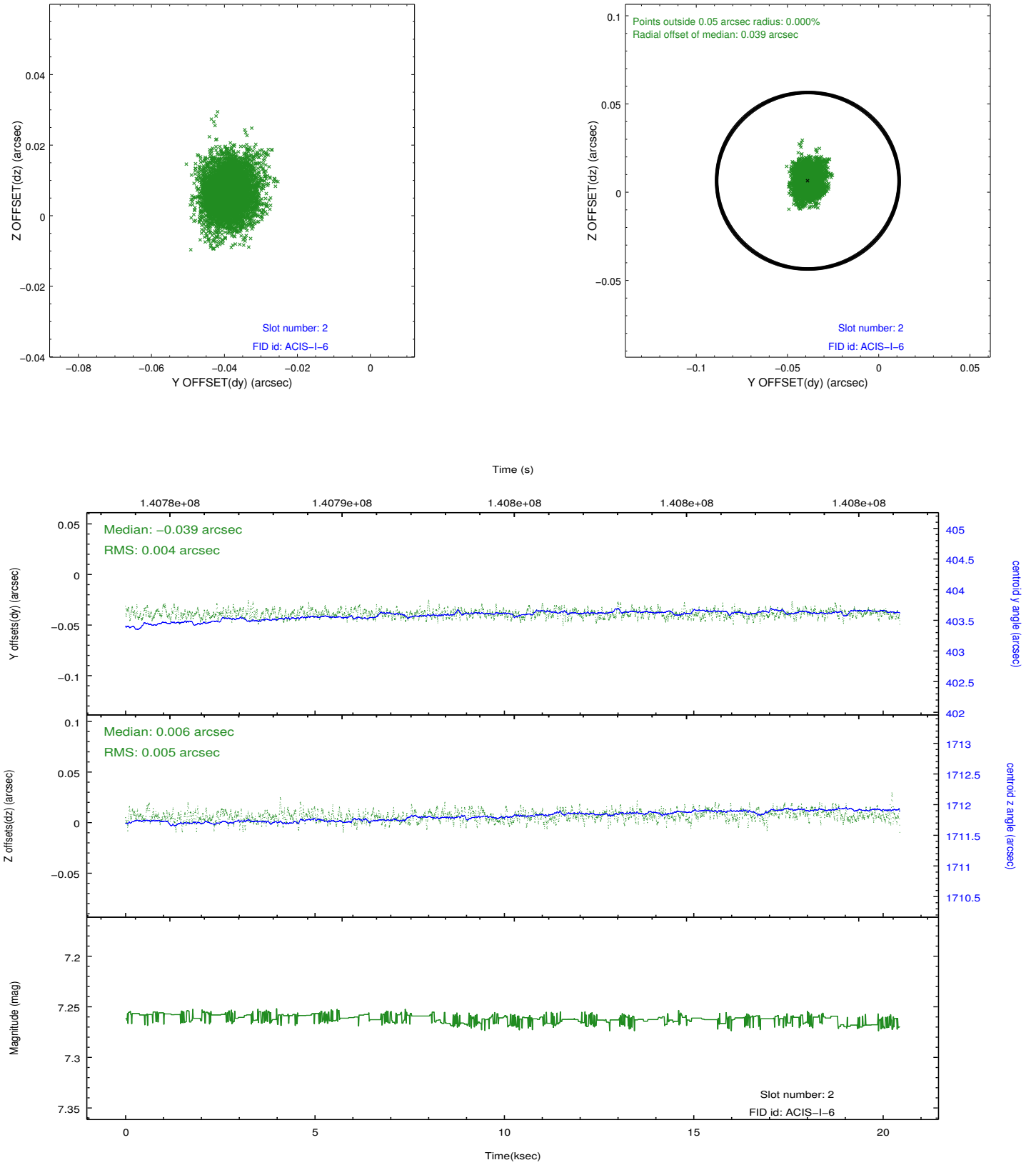
2.5.1 Slot 0



2.5.2 Slot 1



2.5.3 Slot 2



A Summary

A.1 Status

V&V Scientist	Jen Lauer
V&V Date (YYYY-MM-DD)	2012.10.18
V&V Edition	1
V&V Disposition and Status	OK
V&V Charge Time	19.465

A.2 Comments