

V&V Reference Report

L2 ASCDS Version : 8.4.5

Observation 3641 - L2 Version 3
Chandra X-Ray Center

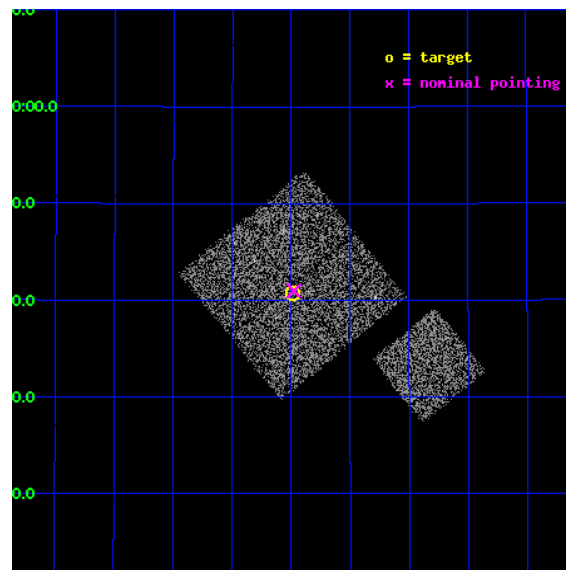
L2 Processing Date : Oct 25 2012

Contents

1	Front	2
2	OBI	3
2.1	OBI	3
2.1.1	Images	3
2.1.2	Bias	3
2.1.3	Parameters	4
2.1.4	Events	4
2.2	Compared Parameters	5
2.3	Aspect	6
2.4	Star Slots	9
2.4.1	Slot 3	9
2.4.2	Slot 4	10
2.4.3	Slot 5	11
2.4.4	Slot 6	12
2.4.5	Slot 7	13
2.5	FID Slots	14
2.5.1	Slot 0	14
2.5.2	Slot 1	15
2.5.3	Slot 2	16
A	Summary	17
A.1	Status	17
A.2	Comments	17

1 Front

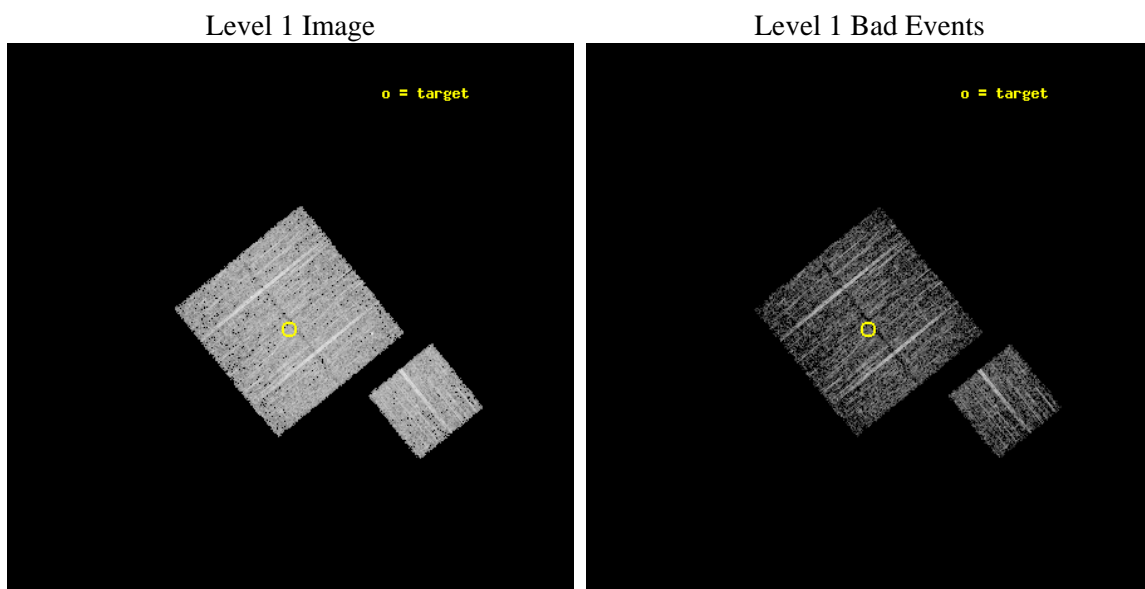
seq_num	900241	Sequence number
obs_id	3641	Observation id
title	CHANDRA LARGE SCALE SURVEY OF THE NOAO BOOTES DEEP FIELD	Proposal
observer	Dr. Stephen Murray	Principal investigator
object	NOAO FIELD F52	Source name
dtcycle	0	
cycle	P	events from which exps? Prim/Second/Both
ra_targ	218.246914	Observer's specified target RA [deg]
dec_targ	34.679082	Observer's specified target Dec [deg]
ra_nom	218.24427246867	Nominal RA [deg]
dec_nom	34.683069891896	Nominal Dec [deg]
roll_nom	141.01018751799	Nominal Roll [deg]
revision	3	Processing version of data
ontime	4773.6649369895	Sum of GTIs [s]
livetime	4711.2934902668	Livetime [s]
ontime0	4776.6827872097	Sum of GTIs [s]
ontime1	4776.723827213	Sum of GTIs [s]
ontime2	4773.6238670647	Sum of GTIs [s]
ontime3	4773.6649369895	Sum of GTIs [s]
ontime6	4776.6417472064	Sum of GTIs [s]
l2events	14993	Number of level 2 events



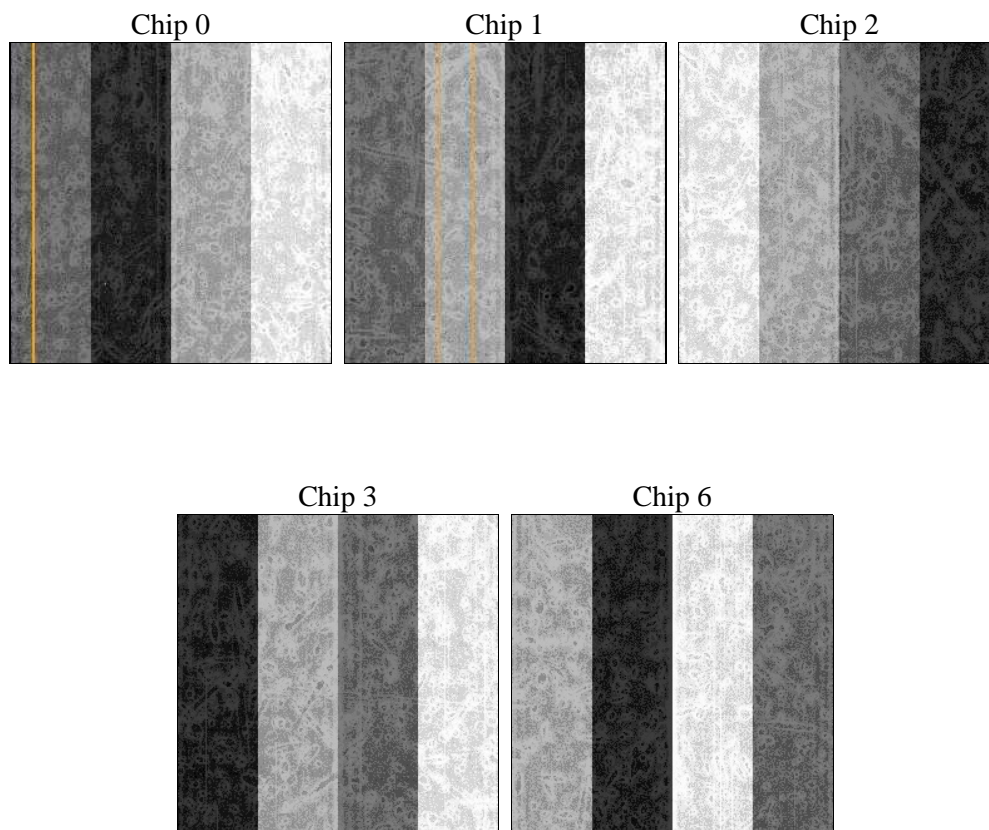
2 OBI

2.1 OBI

2.1.1 Images



2.1.2 Bias



2.1.3 Parameters

obi_num	1	Obi number	sched_exp_time	5000.000000	[s] Scheduled observation exposure time
ascdsver	8.4.5	Processing system revision	ontime	4773.6649369895	Sum of GTIs [s]
caldsver	4.5.2	 	ontime0	4776.6827872097	Sum of GTIs [s]
date	2012-10-25T23:19:05	Date and time of file creation	ontime1	4776.723827213	Sum of GTIs [s]
revision	3	Processing version of data	ontime2	4773.6238670647	Sum of GTIs [s]
			ontime3	4773.6649369895	Sum of GTIs [s]
			ontime6	4776.6417472064	Sum of GTIs [s]
			l1events	128656	Number of level 1 events

2.1.4 Events

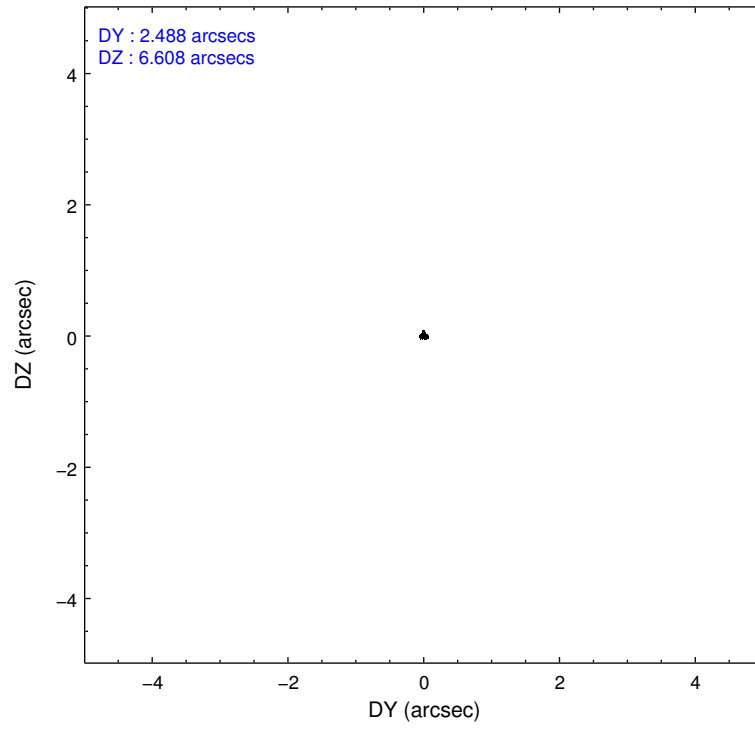
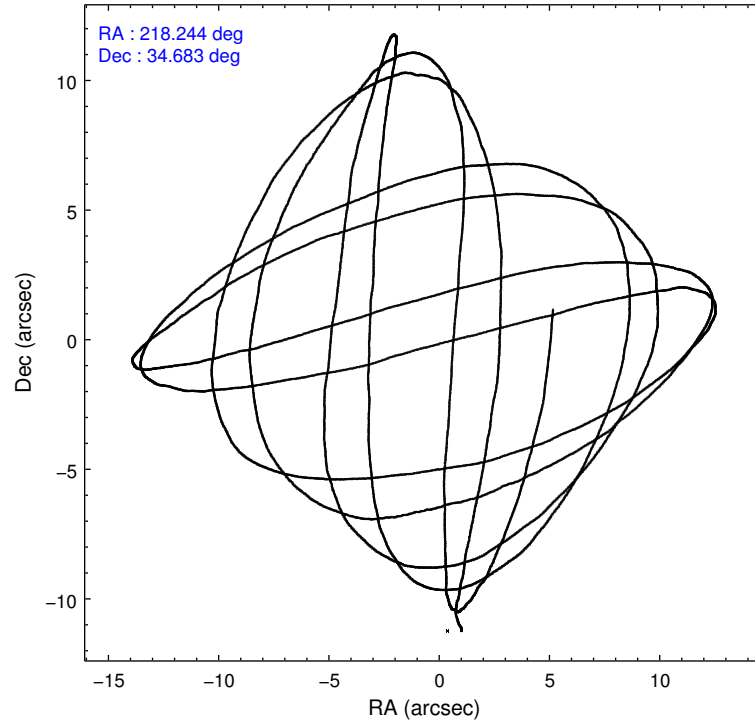
	ccd 0	ccd 1	ccd 2	ccd 3	ccd 6
level 1 events	26465	23273	25780	26942	26196
rejected events	23088	19685	22349	23579	22620
rejected %	87%	84%	86%	87%	86%

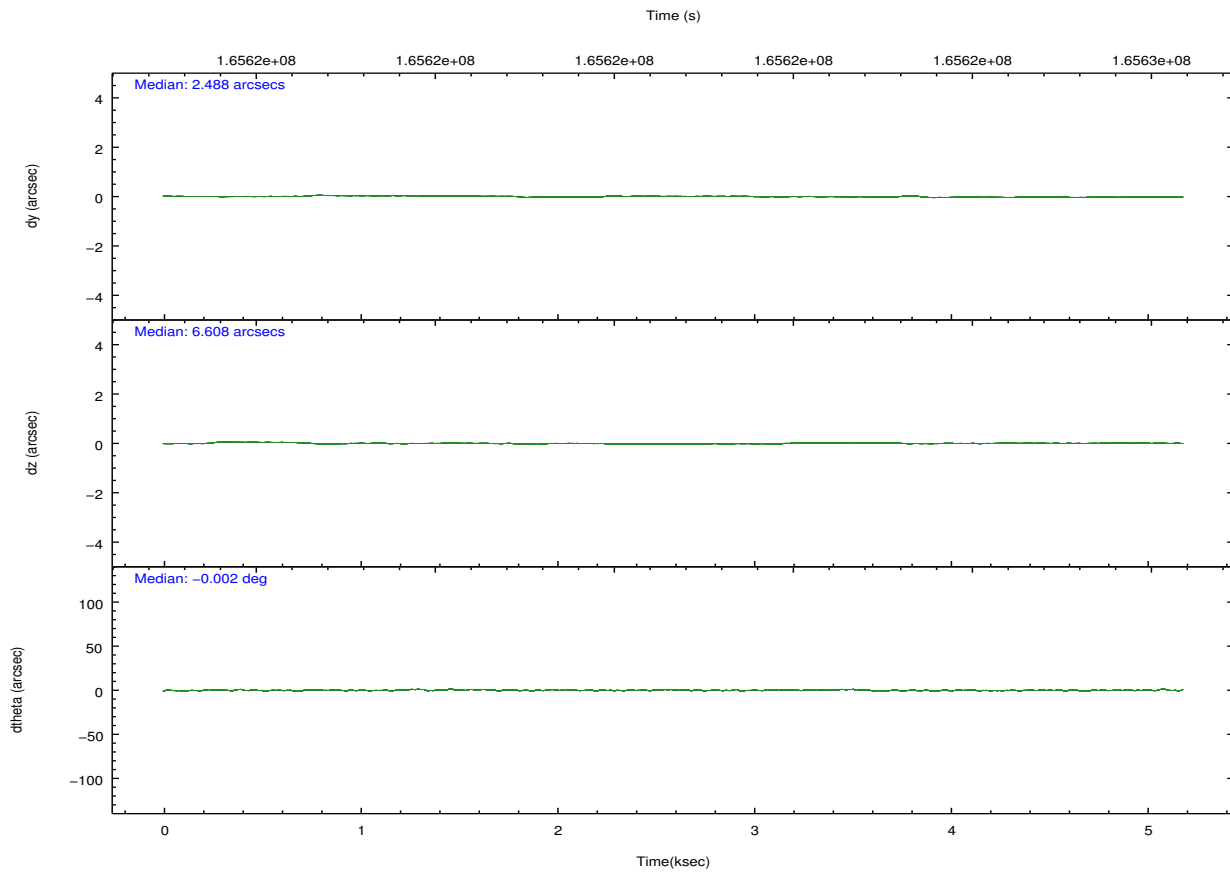
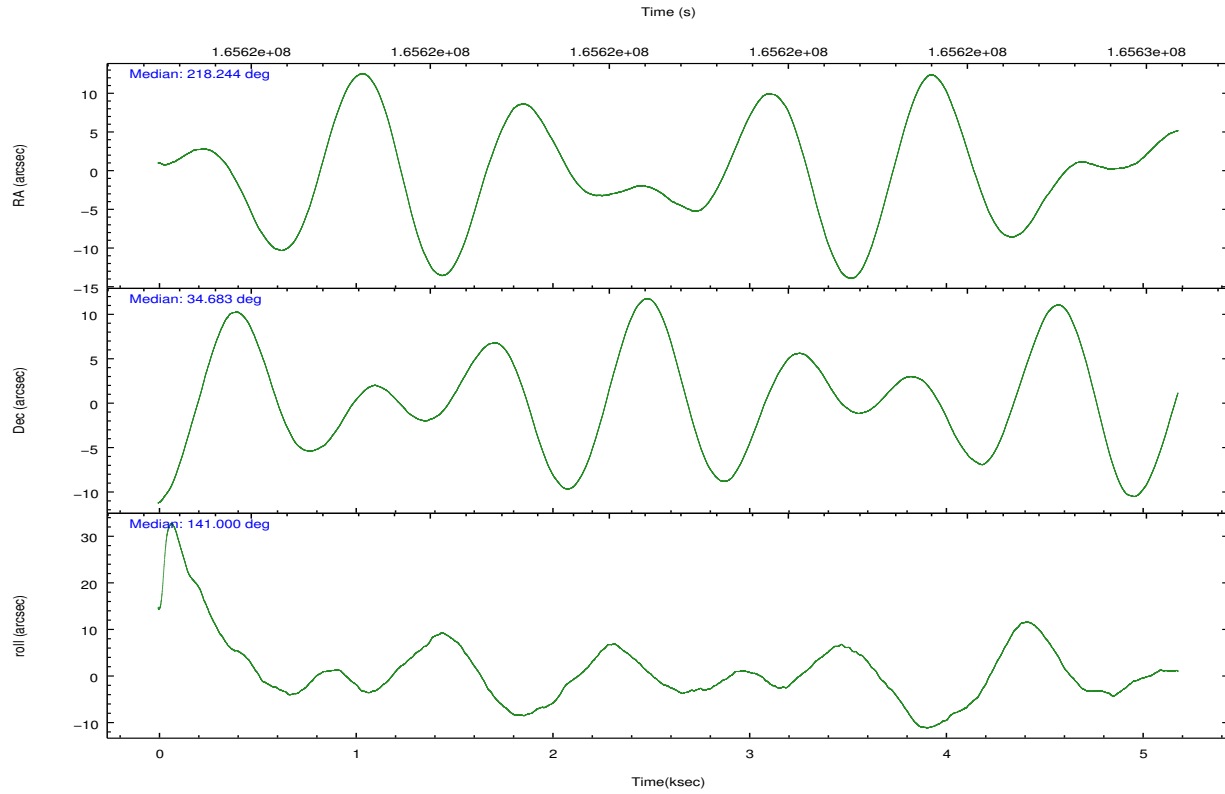
	ccd 0	ccd 1	ccd 2	ccd 3	ccd 6
grade 0 events	1387	1453	1582	1431	1524
	5%	6%	6%	5%	5%
grade 1 events	11	13	13	8	9
	0%	0%	0%	0%	0%
grade 2 events	685	733	640	633	645
	2%	3%	2%	2%	2%
grade 3 events	348	346	301	338	325
	1%	1%	1%	1%	1%
grade 4 events	313	347	335	311	340
	1%	1%	1%	1%	1%
grade 5 events	736	772	619	722	823
	2%	3%	2%	2%	3%
grade 6 events	646	710	574	651	744
	2%	3%	2%	2%	2%
grade 7 events	22339	18899	21716	22848	21786
	84%	81%	84%	84%	83%

2.2 Compared Parameters

Parameter	Planned	Actual	Parameter	Planned	Actual
Instrument	ACIS	ACIS	Obspar format version number	7	7
Detector	ACIS-01236	ACIS-01236	Obspar file type	PREDICTED	ACTUAL
Grating	NONE	NONE	Obspar update status	NONE	UPDATED
Data mode	VFAINT	VFAINT	Number of optional ACIS chips dropped	0	0
Observation mode	POINTING	POINTING	On-chip summing requested	N	N
[deg] Pointing RA	218.277177	218.2442724686687	Subarray requested	NONE	NONE
[deg] Pointing Dec	34.678999	34.68306989189634	Alternating exposures requested	N	N
[deg] Pointing Roll	140.782780	141.0101875179949	[s] Primary exposure time	0.000000	3.1
[mm] SIM focus pos	-0.782348	-0.7809083437167272			
[mm] SIM defocus	0	0.001439871863259334			
[mm] SIM translation stage pos	-233.592463	-233.5874344608287			
[mm] SIM translation stage offset	0	-0.005018542100998502			
[s] Observation start time (MET)	165620913.184000	165620536.77214			
Observation start date	2003-04-01T21:47:29	2003-04-01T21:42:16			
[s] Observation end time (MET)	165625913.184000	165626046.65987			
Observation end date	2003-04-01T23:10:49	2003-04-01T23:14:06			
Read mode	TIMED	TIMED			

2.3 Aspect



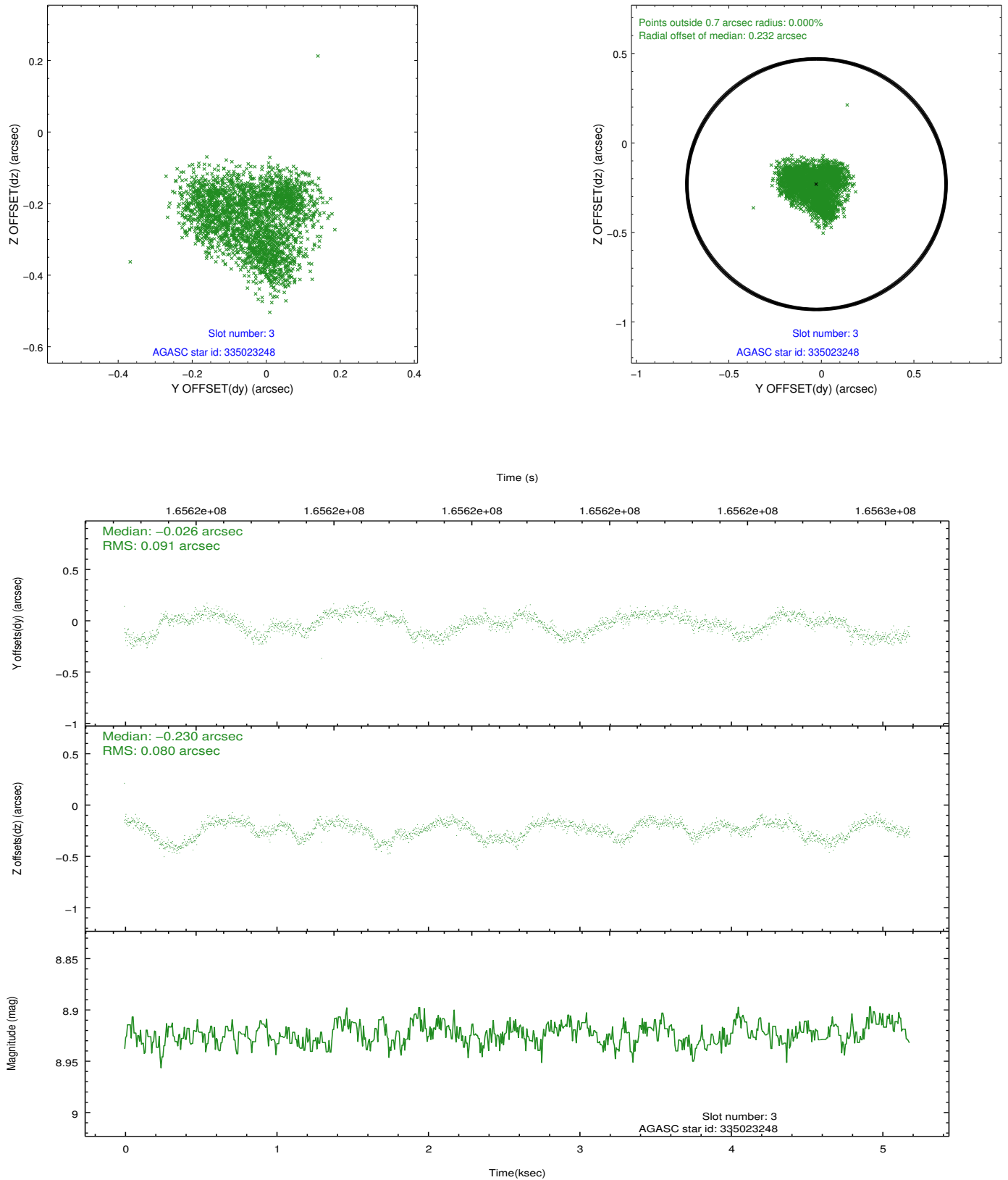


Slot Statistics

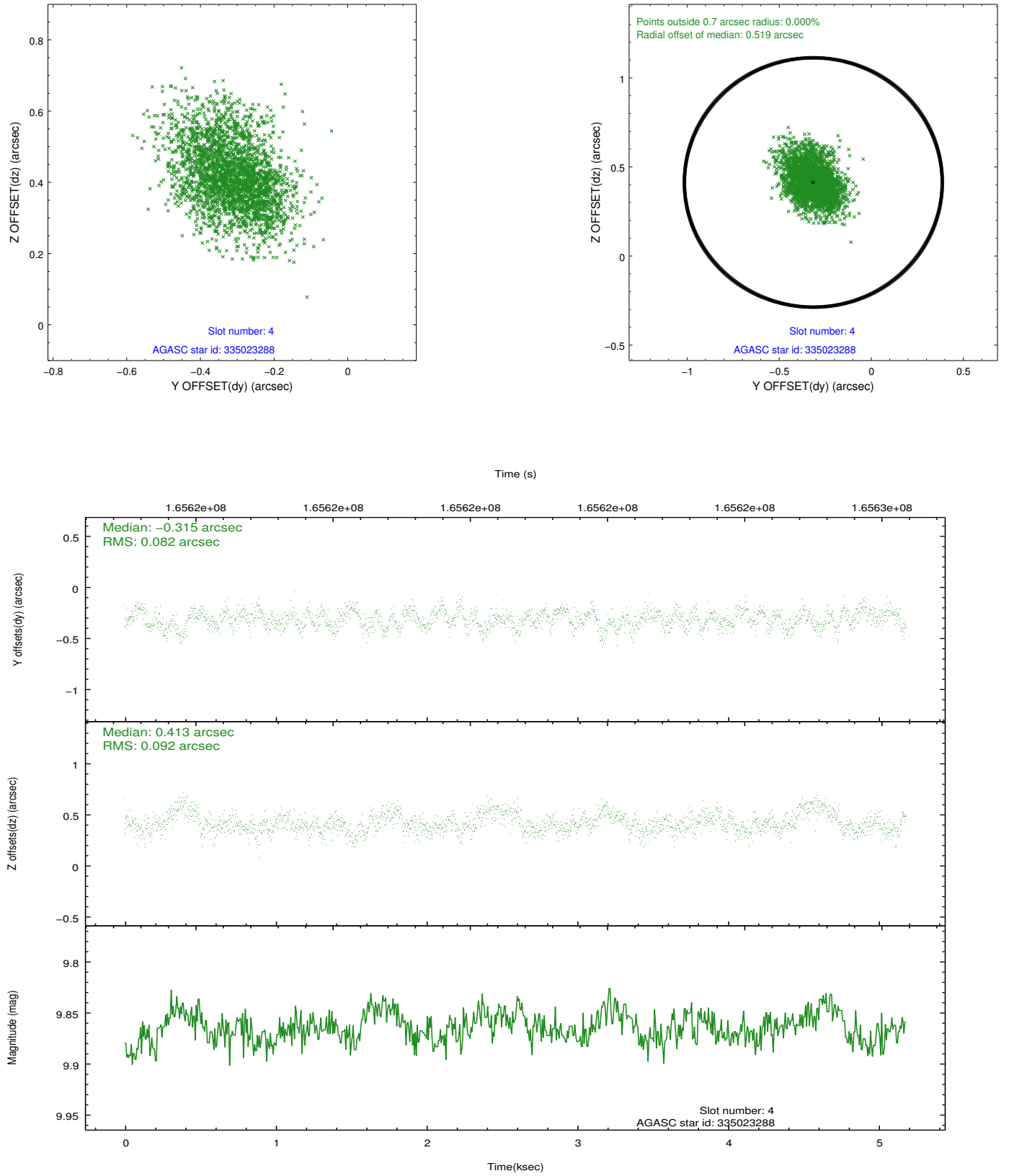
slot	status	id	mag	n_pts	med_dy	med_dz	dr1	dr2	ra	dec	mean_y	mean_z
0	FID	ACIS-I-1	7.25	1265	-0.039	-0.048	0.008	0.014	0.000000	0.000000	937.27	-830.05
1	FID	ACIS-I-4	7.18	1265	0.060	0.075	0.007	0.012	0.000000	0.000000	2158.09	1069.29
2	FID	ACIS-I-5	7.23	1265	-0.119	0.043	0.006	0.012	0.000000	0.000000	-1809.28	1068.48
3	GUIDE	335023248	8.92	2527	-0.026	-0.230	0.133	0.191	217.634832	34.944512	2077.05	453.13
4	GUIDE	335023288	9.86	2529	-0.315	0.413	0.132	0.216	217.791365	34.425735	544.07	1616.29
5	GUIDE	335025040	9.91	2529	0.078	-0.048	0.105	0.173	218.601670	34.305240	-1596.74	431.28
6	GUIDE	335026200	10.71	2452	0.243	-0.196	0.175	0.289	218.096425	34.160577	-762.64	1785.78
7	GUIDE	335153056	10.18	2513	0.037	0.052	0.158	0.252	219.264627	34.869152	-1817.30	-2385.26

2.4 Star Slots

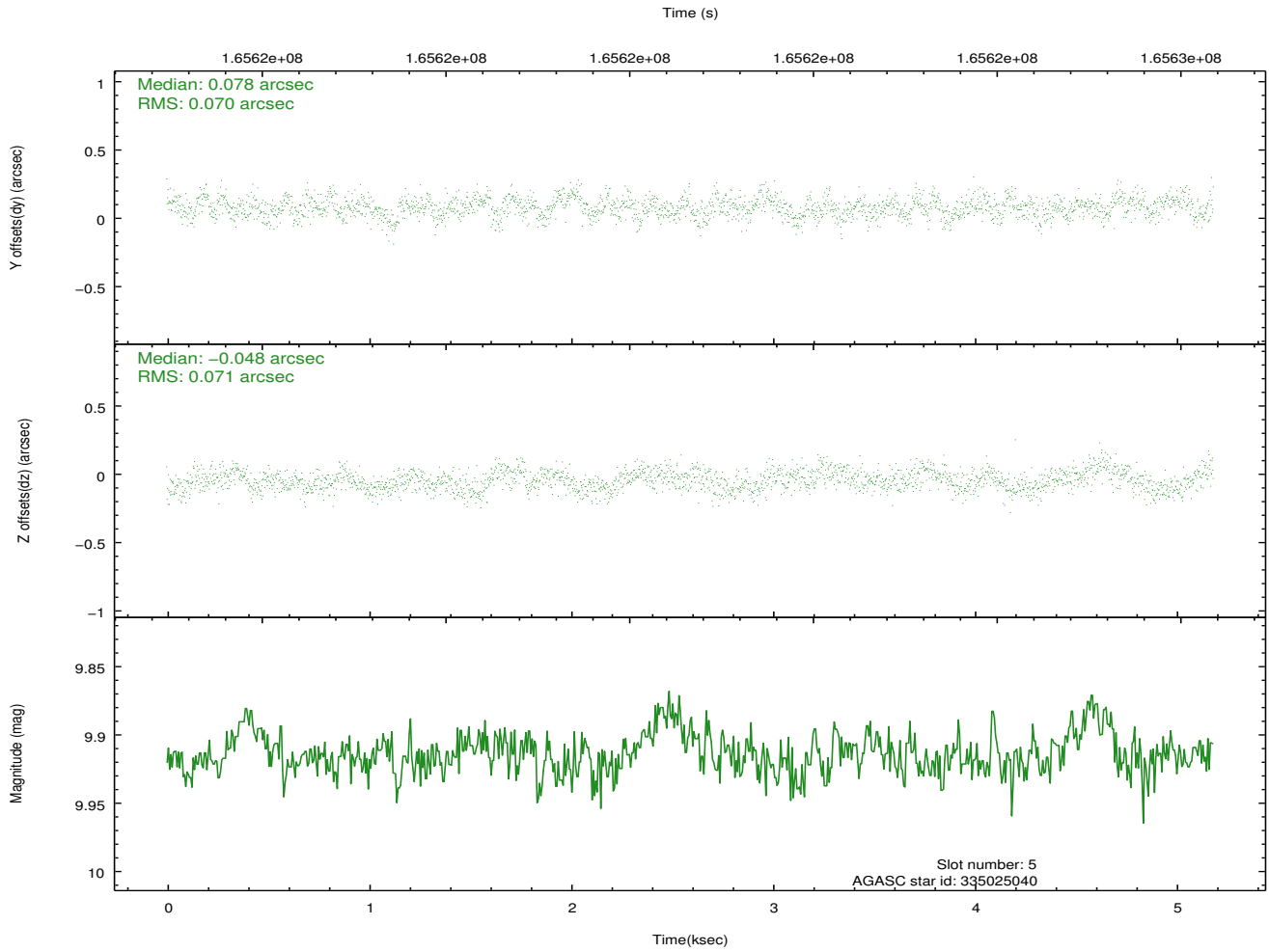
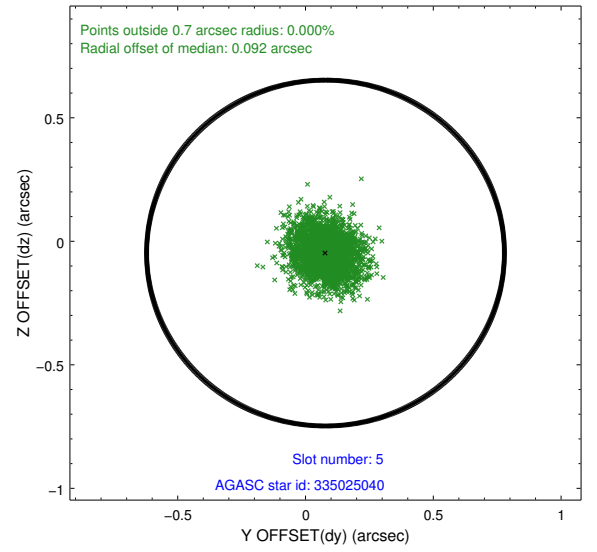
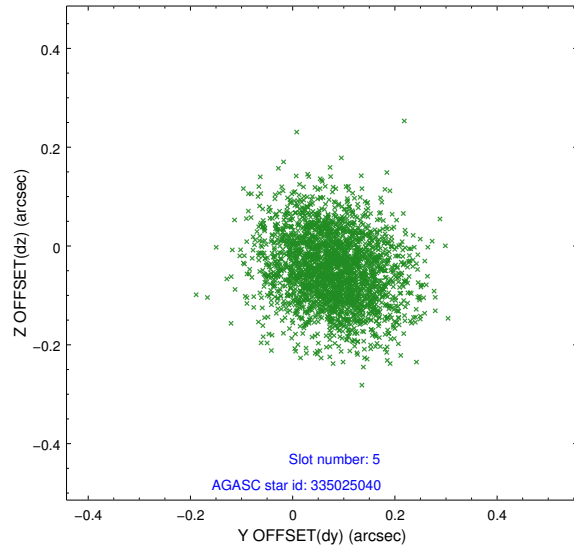
2.4.1 Slot 3



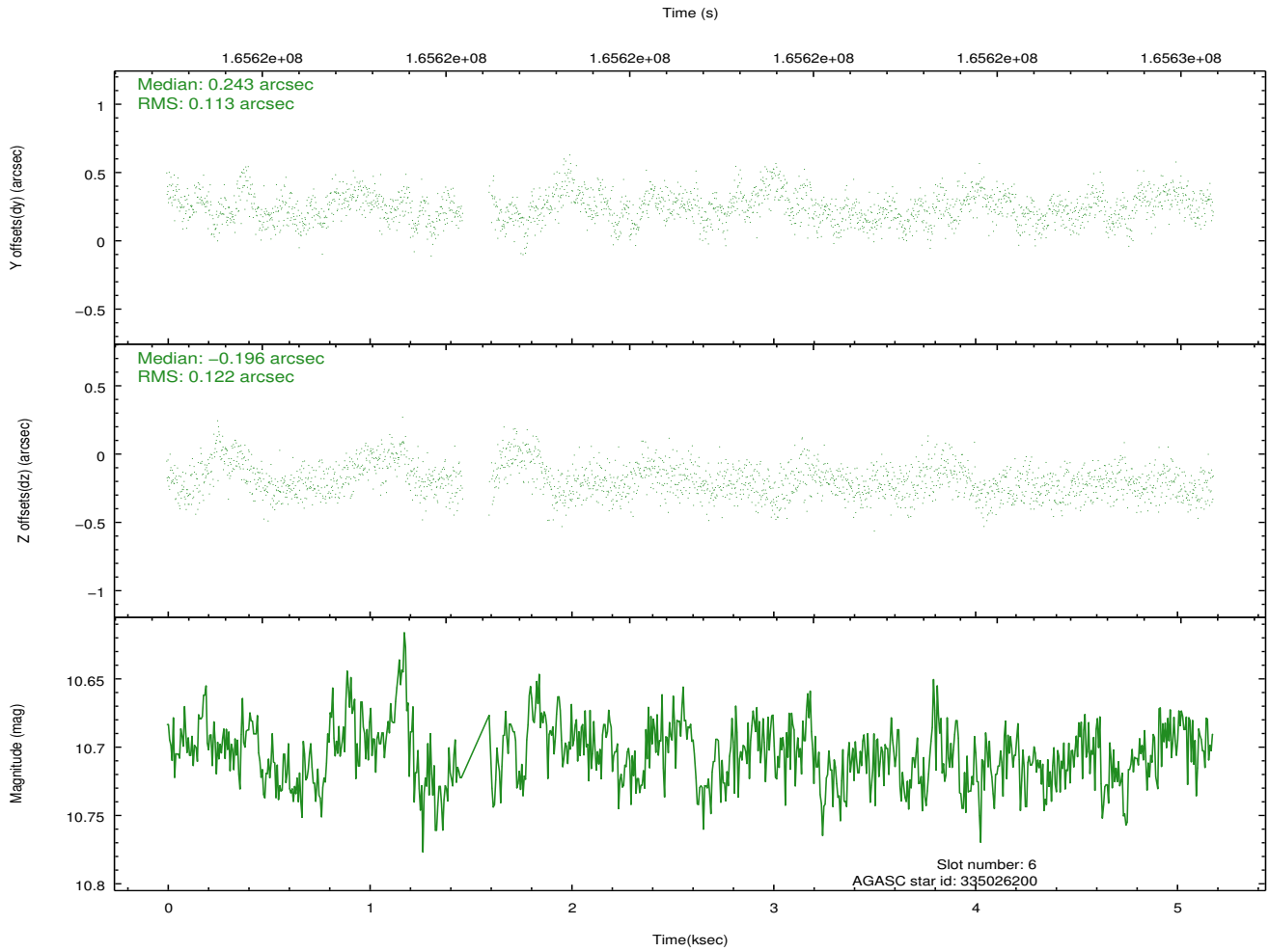
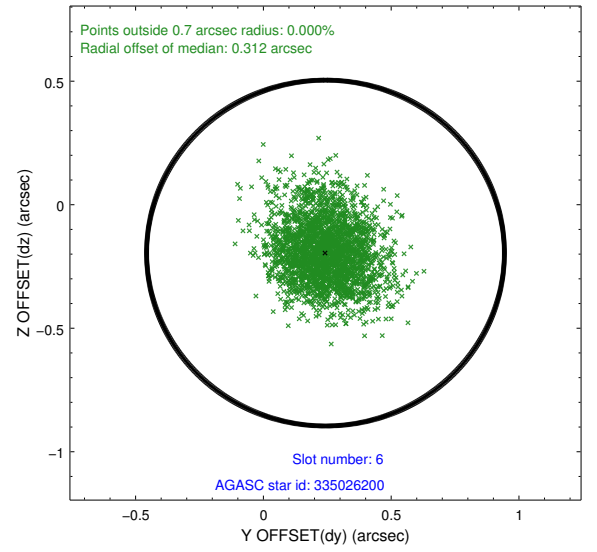
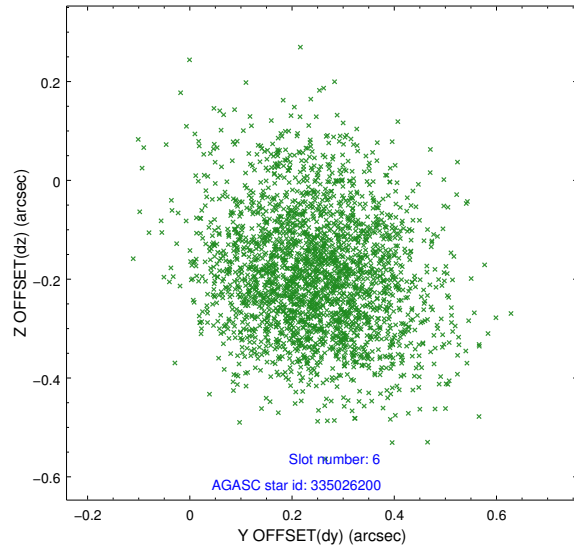
2.4.2 Slot 4



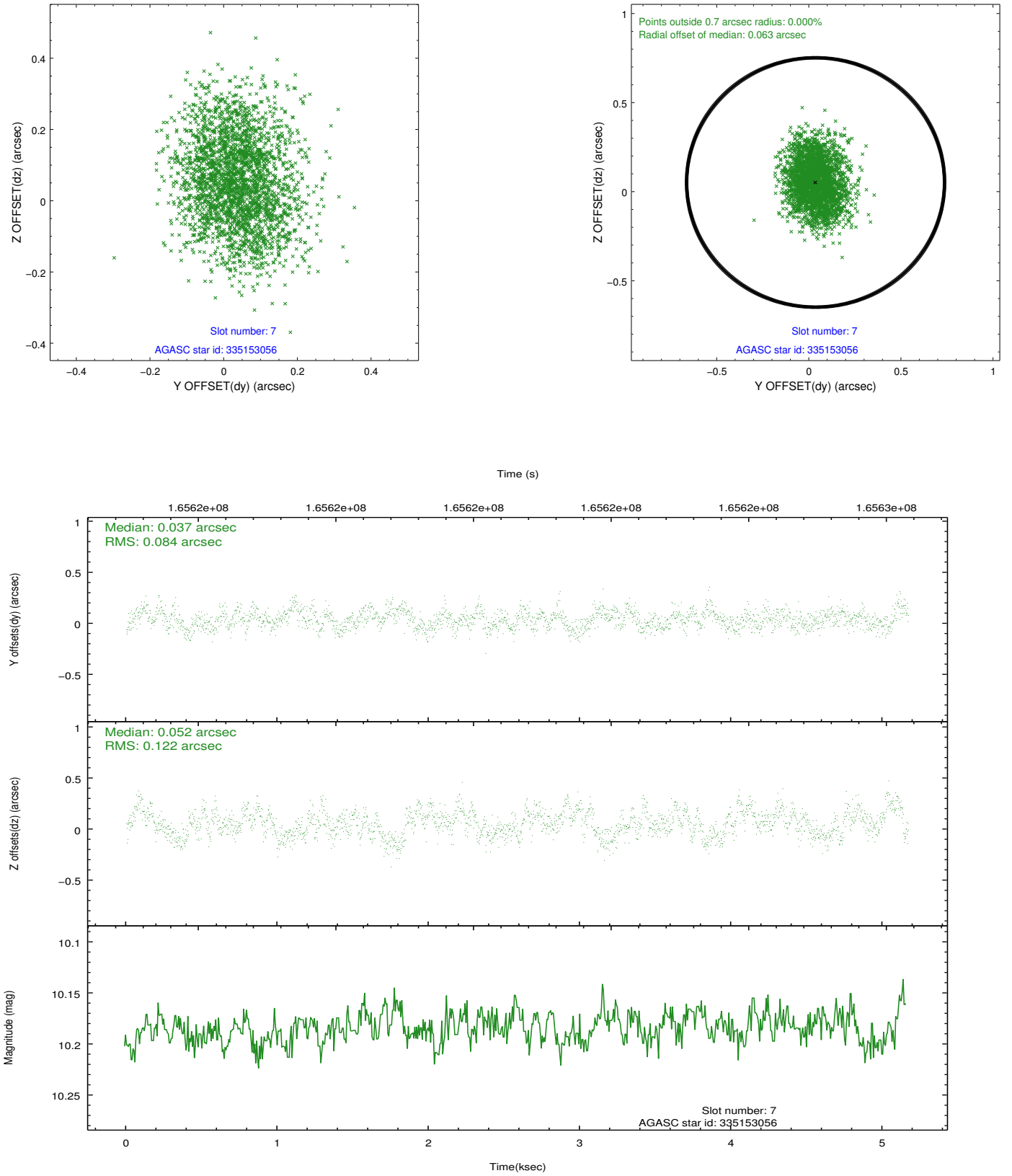
2.4.3 Slot 5



2.4.4 Slot 6

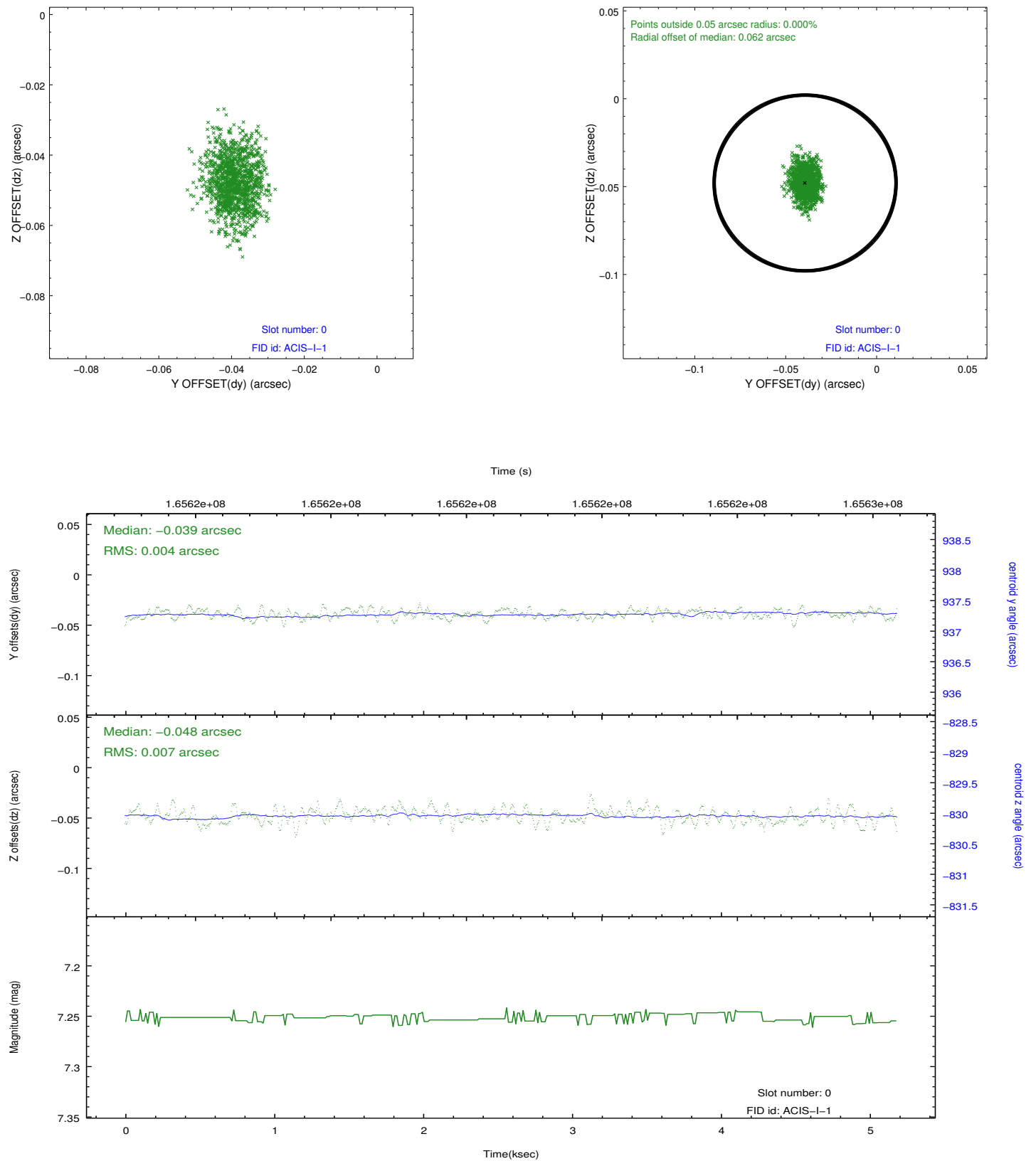


2.4.5 Slot 7

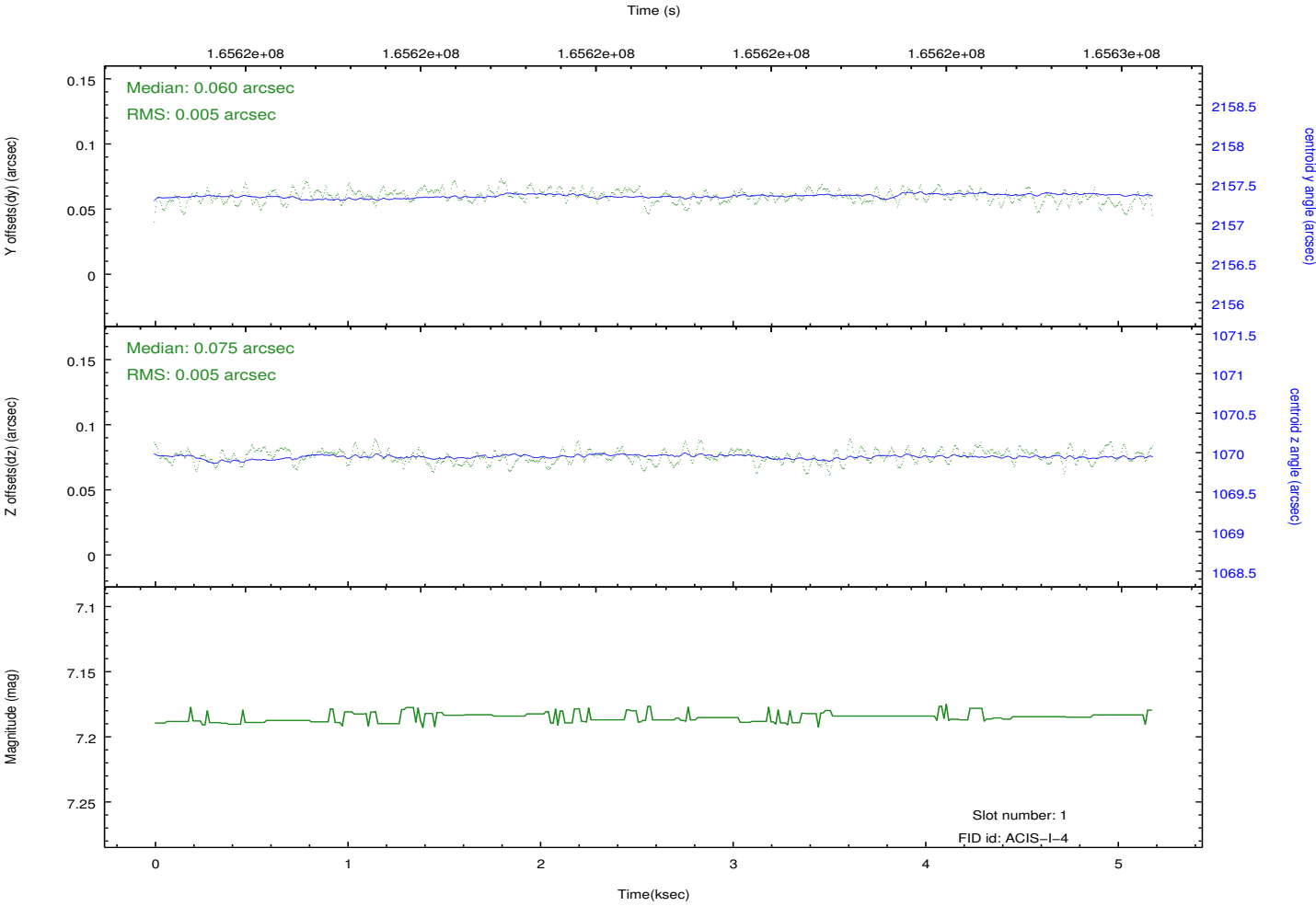
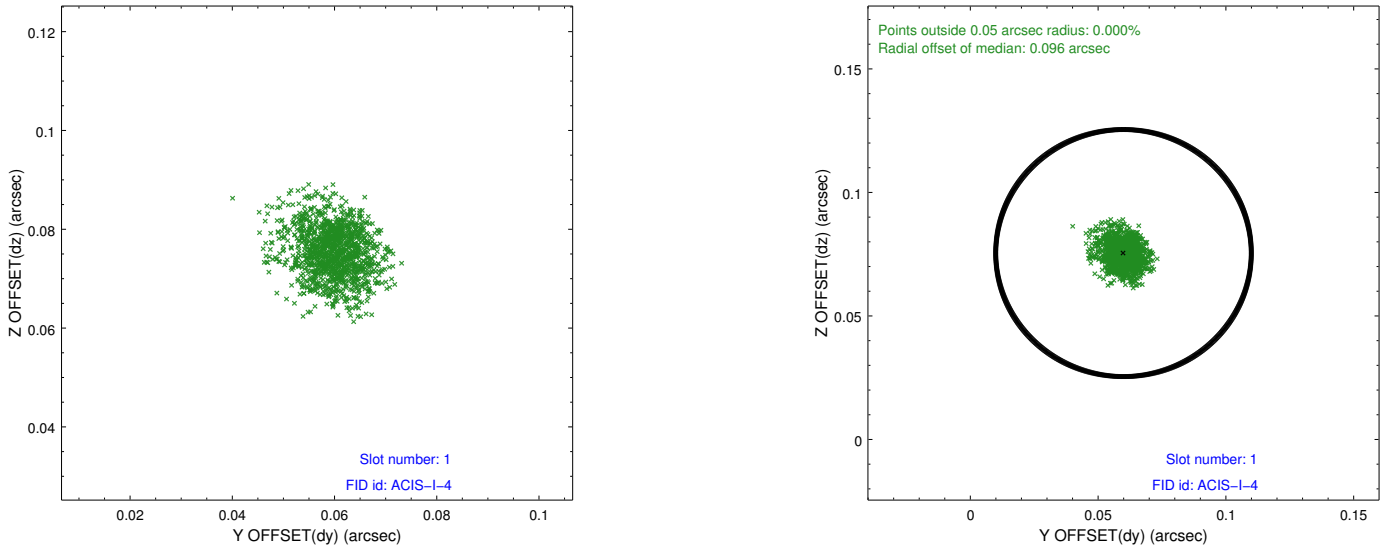


2.5 FID Slots

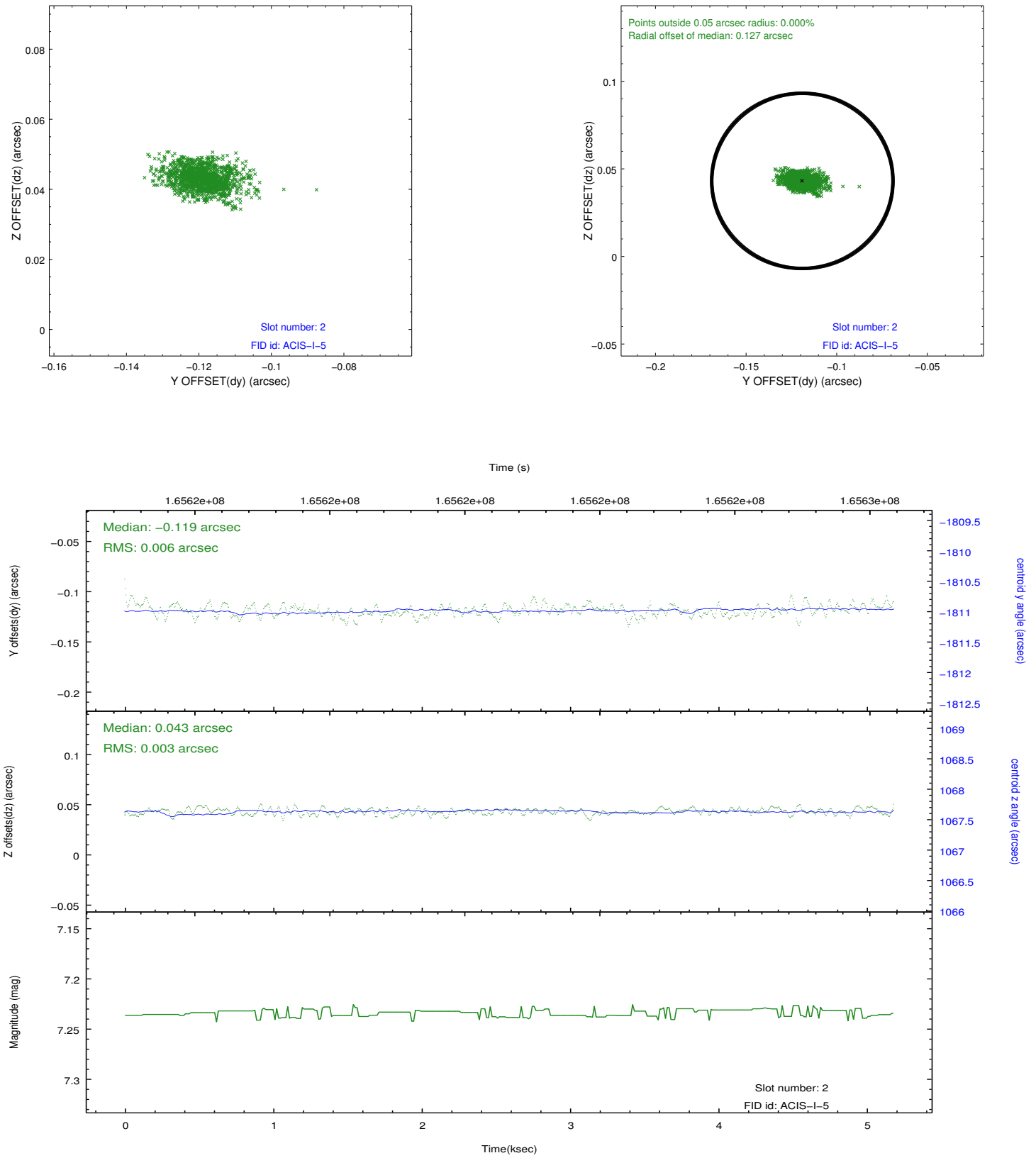
2.5.1 Slot 0



2.5.2 Slot 1



2.5.3 Slot 2



A Summary

A.1 Status

V&V Scientist	Jen Lauer
V&V Date (YYYY-MM-DD)	2012.11.13
V&V Edition	1
V&V Disposition and Status	OK
V&V Charge Time	4.773

A.2 Comments