

# V&V Reference Report

## L2 ASCDS Version : 8.4.5

Observation 3581 - L2 Version 3  
Chandra X-Ray Center

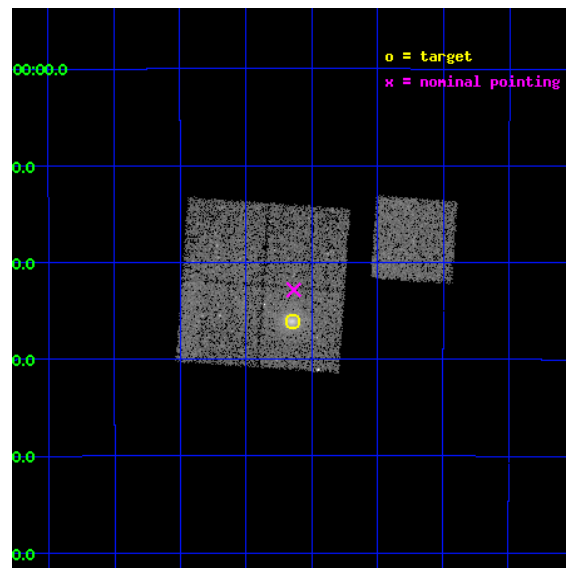
L2 Processing Date : Nov 2 2012

## Contents

<b>1</b>	<b>Front</b>	<b>2</b>
<b>2</b>	<b>OBI</b>	<b>3</b>
2.1	OBI . . . . .	3
2.1.1	Images . . . . .	3
2.1.2	Bias . . . . .	3
2.1.3	Parameters . . . . .	4
2.1.4	Events . . . . .	4
2.2	Compared Parameters . . . . .	5
2.3	Aspect . . . . .	6
2.4	Star Slots . . . . .	9
2.4.1	Slot 3 . . . . .	9
2.4.2	Slot 4 . . . . .	10
2.4.3	Slot 5 . . . . .	11
2.4.4	Slot 6 . . . . .	12
2.4.5	Slot 7 . . . . .	13
2.5	FID Slots . . . . .	14
2.5.1	Slot 0 . . . . .	14
2.5.2	Slot 1 . . . . .	15
2.5.3	Slot 2 . . . . .	16
<b>A</b>	<b>Summary</b>	<b>17</b>
A.1	Status . . . . .	17
A.2	Comments . . . . .	17

# 1 Front

seq_num	800302	Sequence number
obs_id	3581	Observation id
title	X-RAY/SZ DETERMINATION OF COSMOLOGICAL PARAMETERS	Proposal title
observer	DR. LEON VANSPEYBROECK	Principal investigator
object	MACS-J0257.1-2325	Source name
dtcycle	0	&#160
cycle	P	events from which exps? Prim/Second/Both
ra_targ	44.285833	Observer's specified target RA [deg]
dec_targ	-23.435	Observer's specified target Dec [deg]
ra_nom	44.283741045616	Nominal RA [deg]
dec_nom	-23.380705841461	Nominal Dec [deg]
roll_nom	94.135971068488	Nominal Roll [deg]
revision	3	Processing version of data
ontime	18717.799963981	Sum of GTIs [s]
livetime	18473.238127608	Livetime [s]
ontime0	18717.799963981	Sum of GTIs [s]
ontime1	18717.799963981	Sum of GTIs [s]
ontime2	18717.799963981	Sum of GTIs [s]
ontime3	18717.799963981	Sum of GTIs [s]
ontime6	18717.799963981	Sum of GTIs [s]
l2events	47887	Number of level 2 events

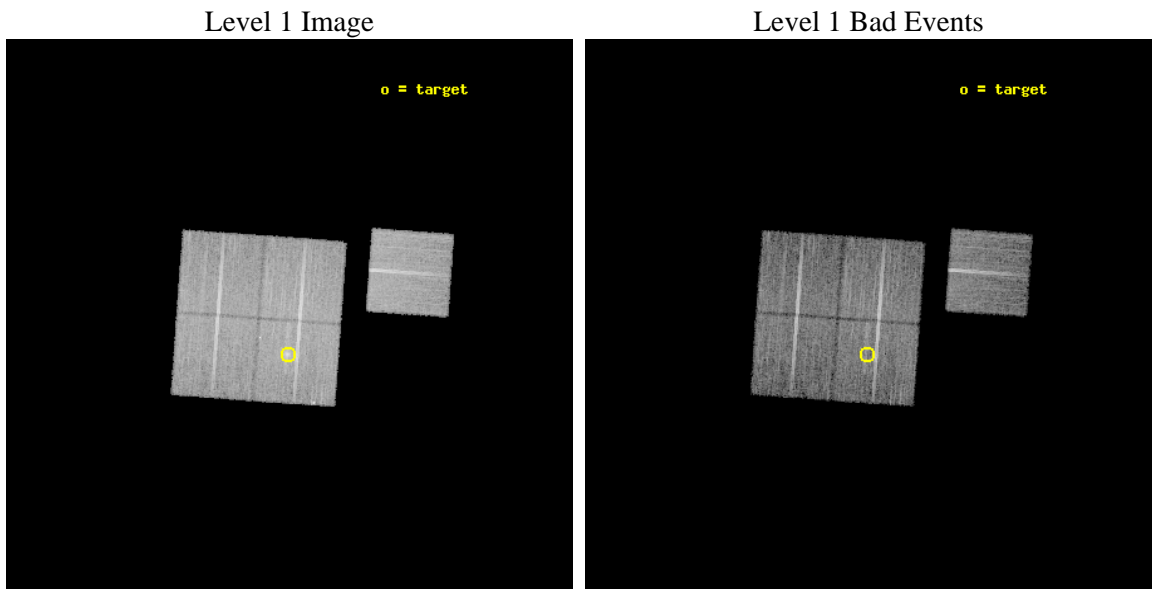




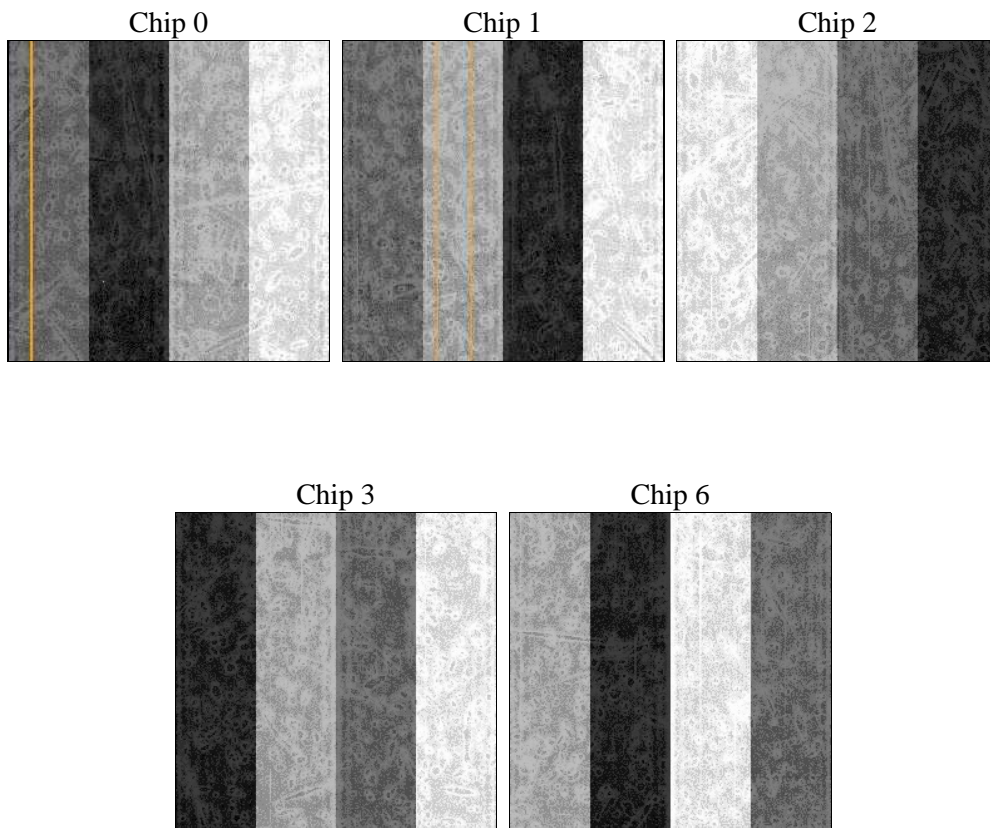
## 2 OBI

### 2.1 OBI

#### 2.1.1 Images



#### 2.1.2 Bias



### 2.1.3 Parameters

obi_num	0	Obi number	sched_exp_time	18600.000000	[s] Scheduled observation exposure time
ascdsver	8.4.5	Processing system revision	ontime	18717.799963981	Sum of GTIs [s]
caldsver	4.5.2	&#160	ontime0	18717.799963981	Sum of GTIs [s]
date	2012-11-02T16:12:46	Date and time of file creation	ontime1	18717.799963981	Sum of GTIs [s]
revision	3	Processing version of data	ontime2	18717.799963981	Sum of GTIs [s]
			ontime3	18717.799963981	Sum of GTIs [s]
			ontime6	18717.799963981	Sum of GTIs [s]
			l1events	500482	Number of level 1 events

### 2.1.4 Events

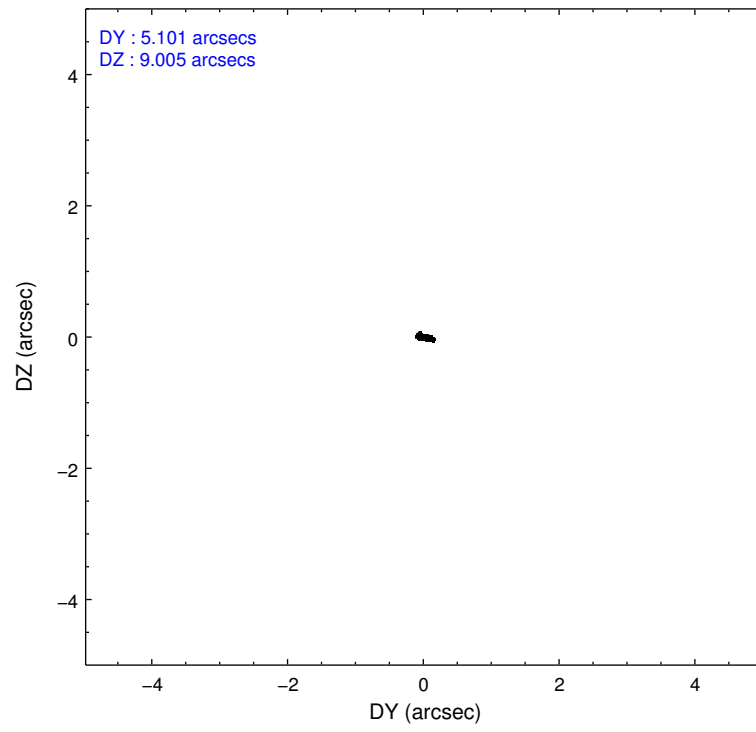
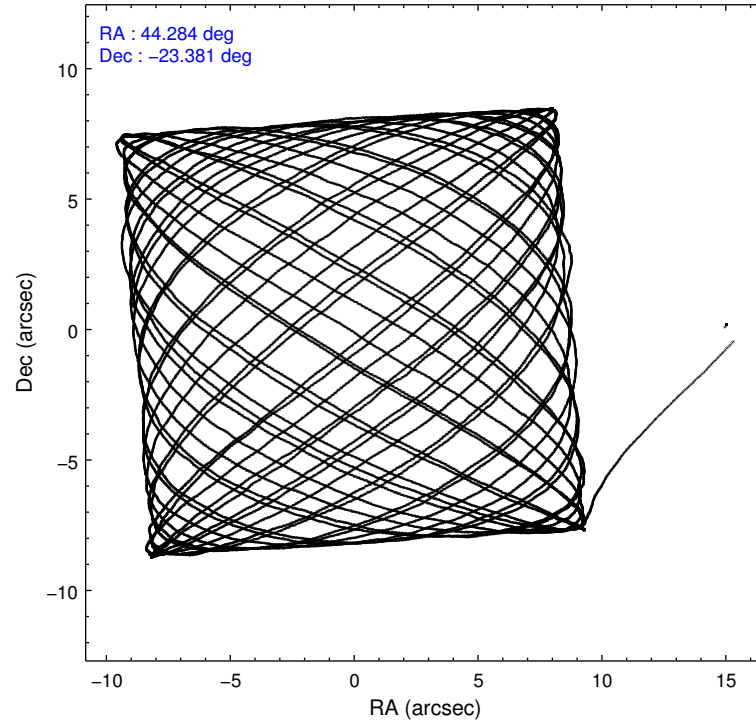
	ccd 0	ccd 1	ccd 2	ccd 3	ccd 6
level 1 events	91840	91098	107415	106997	103132
rejected events	81732	79623	97652	92055	92569
rejected %	88%	87%	90%	86%	89%

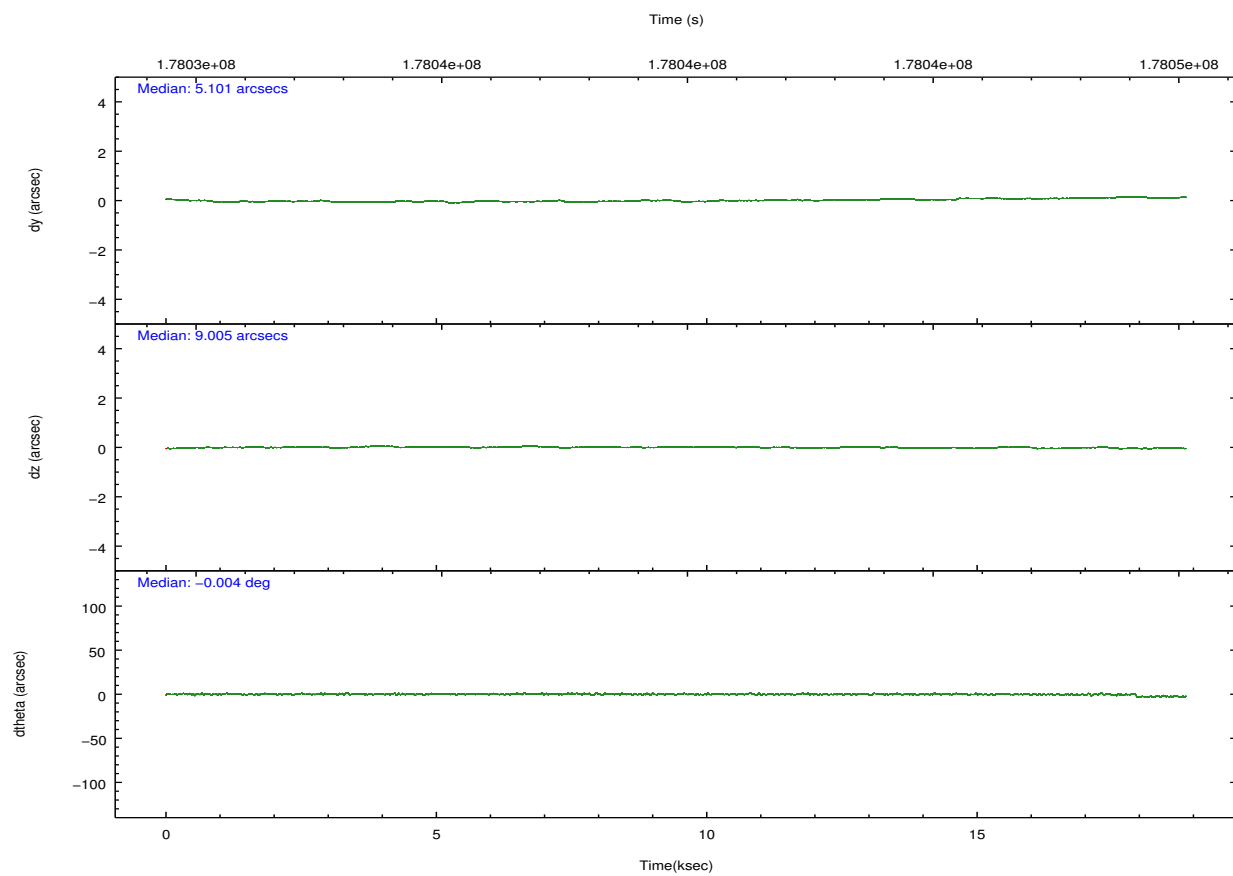
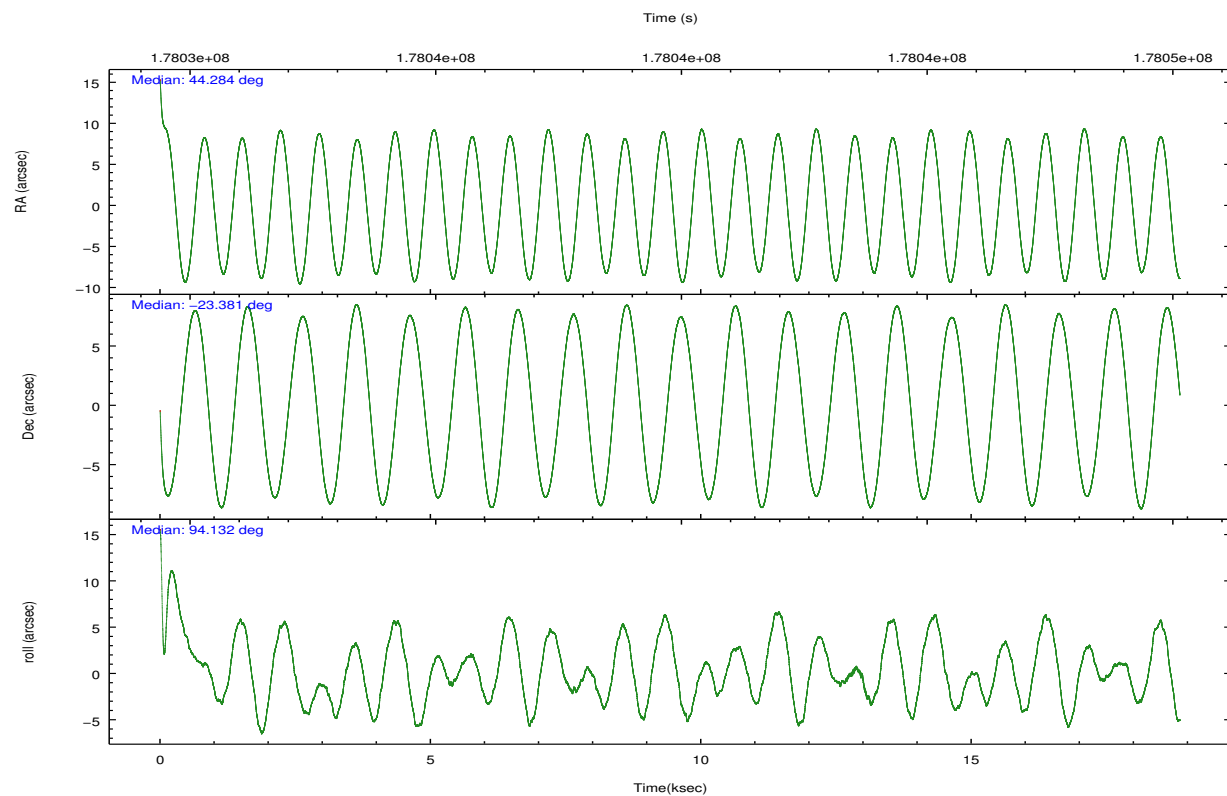
	ccd 0	ccd 1	ccd 2	ccd 3	ccd 6
grade 0 events	3619	4450	3593	8004	3948
	3%	4%	3%	7%	3%
grade 1 events	39	40	53	95	44
	0%	0%	0%	0%	0%
grade 2 events	2298	2370	2227	2557	2121
	2%	2%	2%	2%	2%
grade 3 events	1223	1276	1068	1214	1214
	1%	1%	0%	1%	1%
grade 4 events	1099	1234	1093	1206	1163
	1%	1%	1%	1%	1%
grade 5 events	3433	3661	3353	3937	3896
	3%	4%	3%	3%	3%
grade 6 events	1870	2148	1785	1961	2118
	2%	2%	1%	1%	2%
grade 7 events	78259	75919	94243	88023	88628
	85%	83%	87%	82%	85%

## 2.2 Compared Parameters

Parameter	Planned	Actual	Parameter	Planned	Actual
Instrument	ACIS	ACIS	Obspar format version number	7	7
Detector	ACIS-01236	ACIS-01236	Obspar file type	PREDICTED	ACTUAL
Grating	NONE	NONE	Obspar update status	NONE	UPDATED
Data mode	VFAINT	VFAINT	Number of optional ACIS chips dropped	0	0
Observation mode	POINTING	POINTING	On-chip summing requested	N	N
[deg] Pointing RA	44.300576	44.28374104561647	Subarray requested	NONE	NONE
[deg] Pointing Dec	-23.403336	-23.38070584146056	Alternating exposures requested	N	N
[deg] Pointing Roll	93.933954	94.1359710684884	[s] Primary exposure time	0.000000	3.1
[mm] SIM focus pos	-0.782348	-0.7809083437167272			
[mm] SIM defocus	0	0.001439871863259334			
[mm] SIM translation stage pos	-225.840463	-225.8433433320239			
[mm] SIM translation stage offset	-7.752	-7.749109670905796			
[s] Observation start time (MET)	178030598.184000	178029589.61167			
Observation start date	2003-08-23T12:55:34	2003-08-23T12:39:49			
[s] Observation end time (MET)	178049198.184000	178050083.46255			
Observation end date	2003-08-23T18:05:34	2003-08-23T18:21:23			
Read mode	TIMED	TIMED			

## 2.3 Aspect



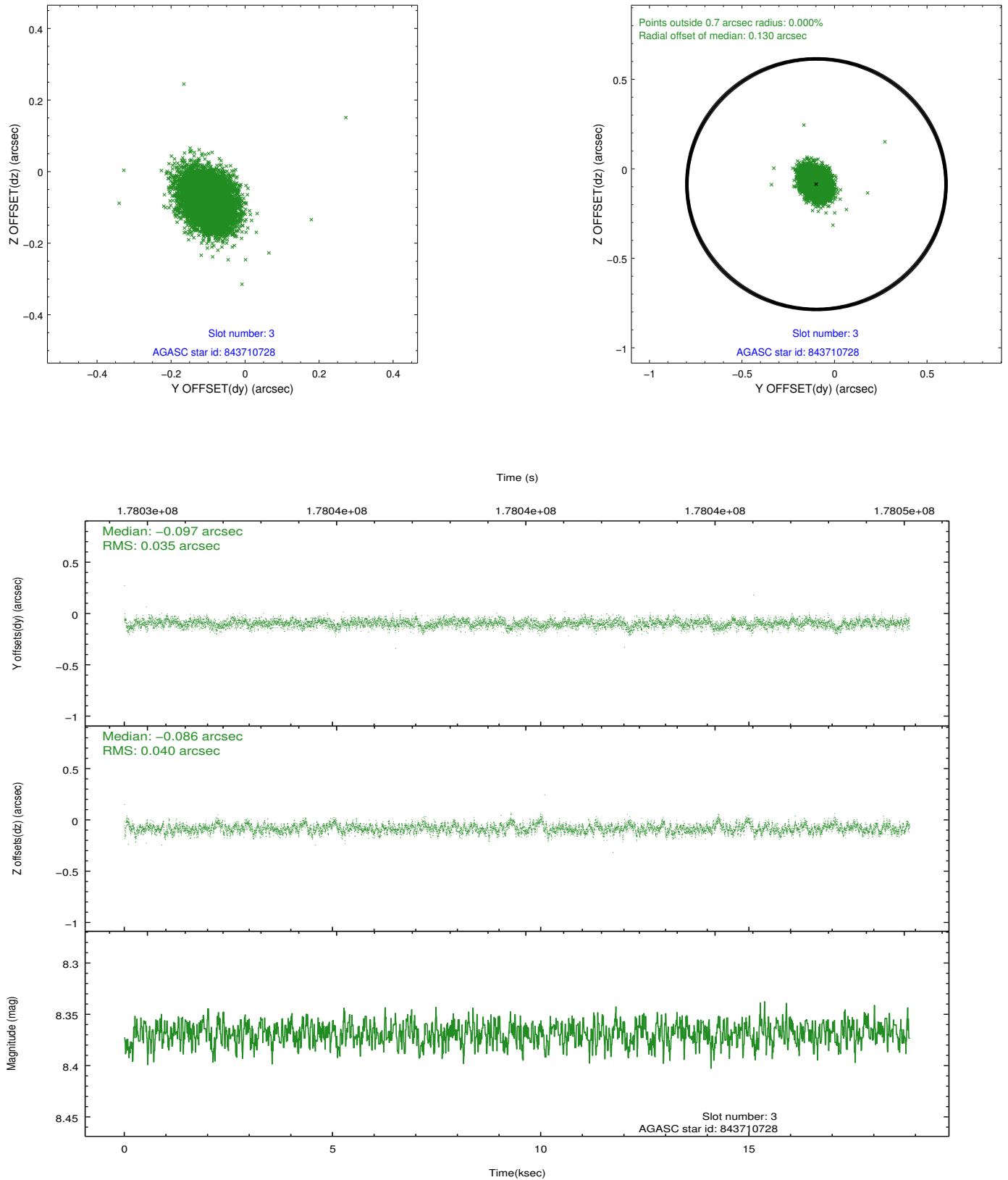


### Slot Statistics

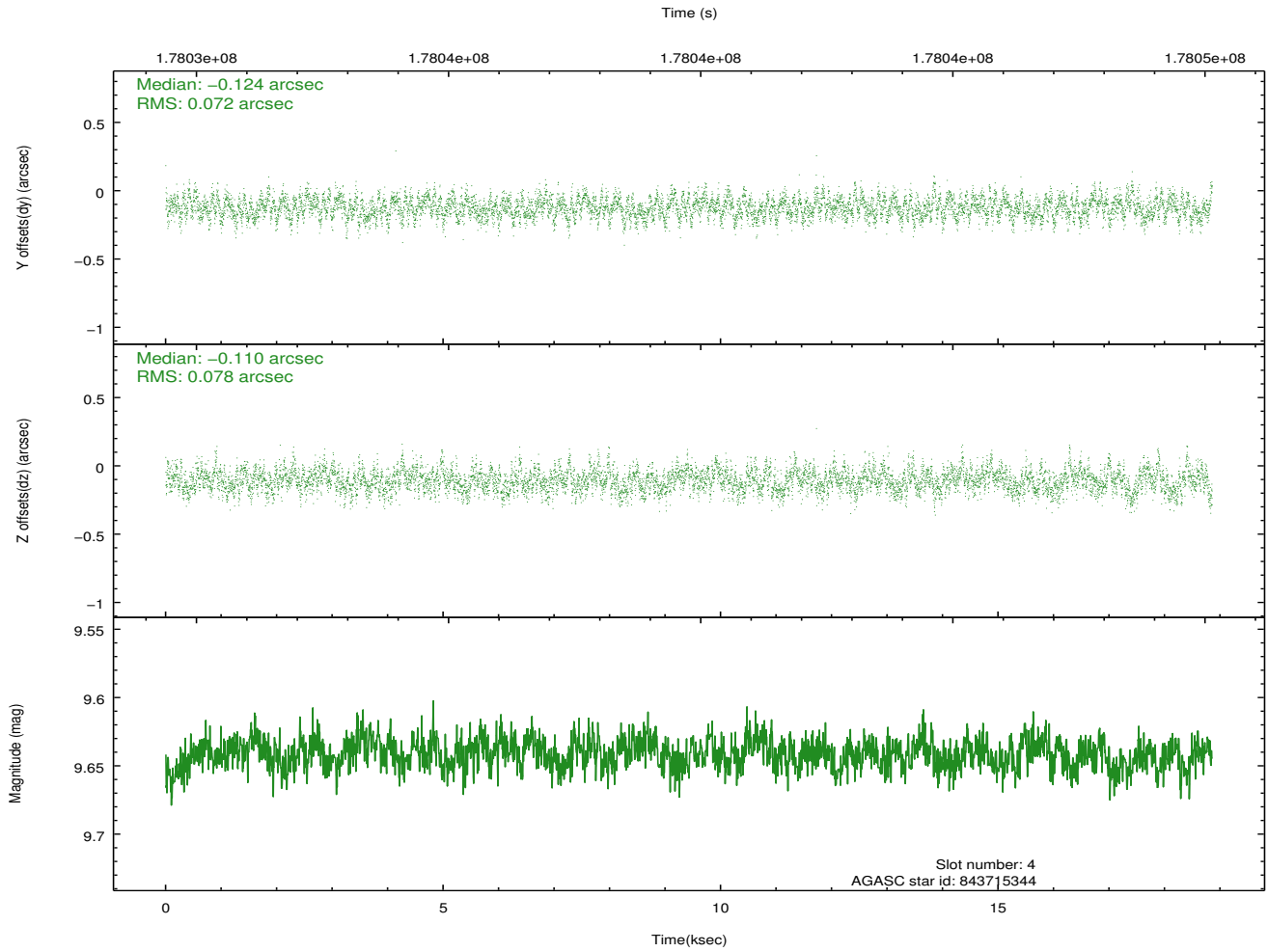
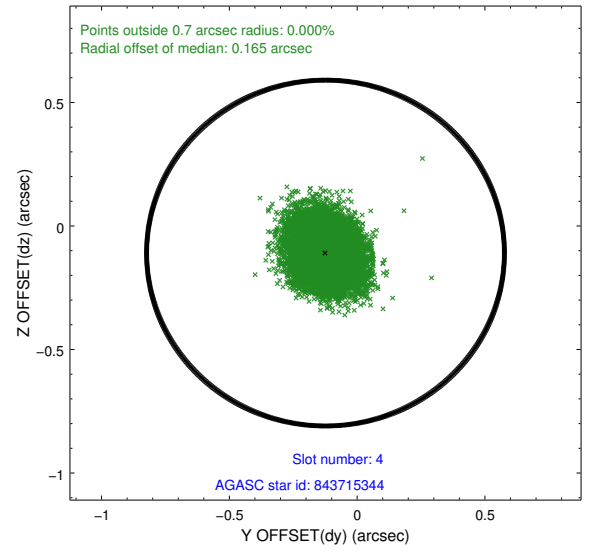
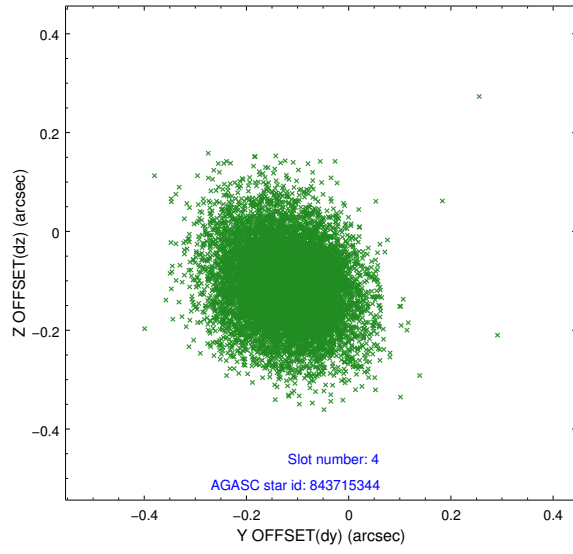
slot	status	id	mag	n_pts	med_dy	med_dz	dr1	dr2	ra	dec	mean_y	mean_z
0	FID	ACIS-I-1	7.23	4600	0.083	-0.094	0.008	0.019	0.000000	0.000000	934.59	-991.59
1	FID	ACIS-I-4	7.14	4599	-0.010	0.050	0.008	0.017	0.000000	0.000000	2154.16	909.23
2	FID	ACIS-I-5	7.21	4599	-0.171	0.116	0.007	0.016	0.000000	0.000000	-1813.45	906.29
3	GUIDE	843710728	8.37	9196	-0.097	-0.086	0.056	0.092	44.214884	-22.985501	1520.09	180.40
4	GUIDE	843715344	9.64	9195	-0.124	-0.110	0.113	0.182	43.754026	-23.341523	342.44	1787.46
5	GUIDE	843845816	7.83	9198	0.024	0.103	0.086	0.293	44.829539	-23.689415	-1149.94	-1668.66
6	GUIDE	843850104	8.83	9199	0.056	0.146	0.086	0.136	44.929885	-23.381676	-69.27	-2079.34
7	GUIDE	843716112	9.33	9196	0.142	-0.026	0.113	0.190	43.925003	-24.083321	-2359.05	1399.38

## 2.4 Star Slots

### 2.4.1 Slot 3

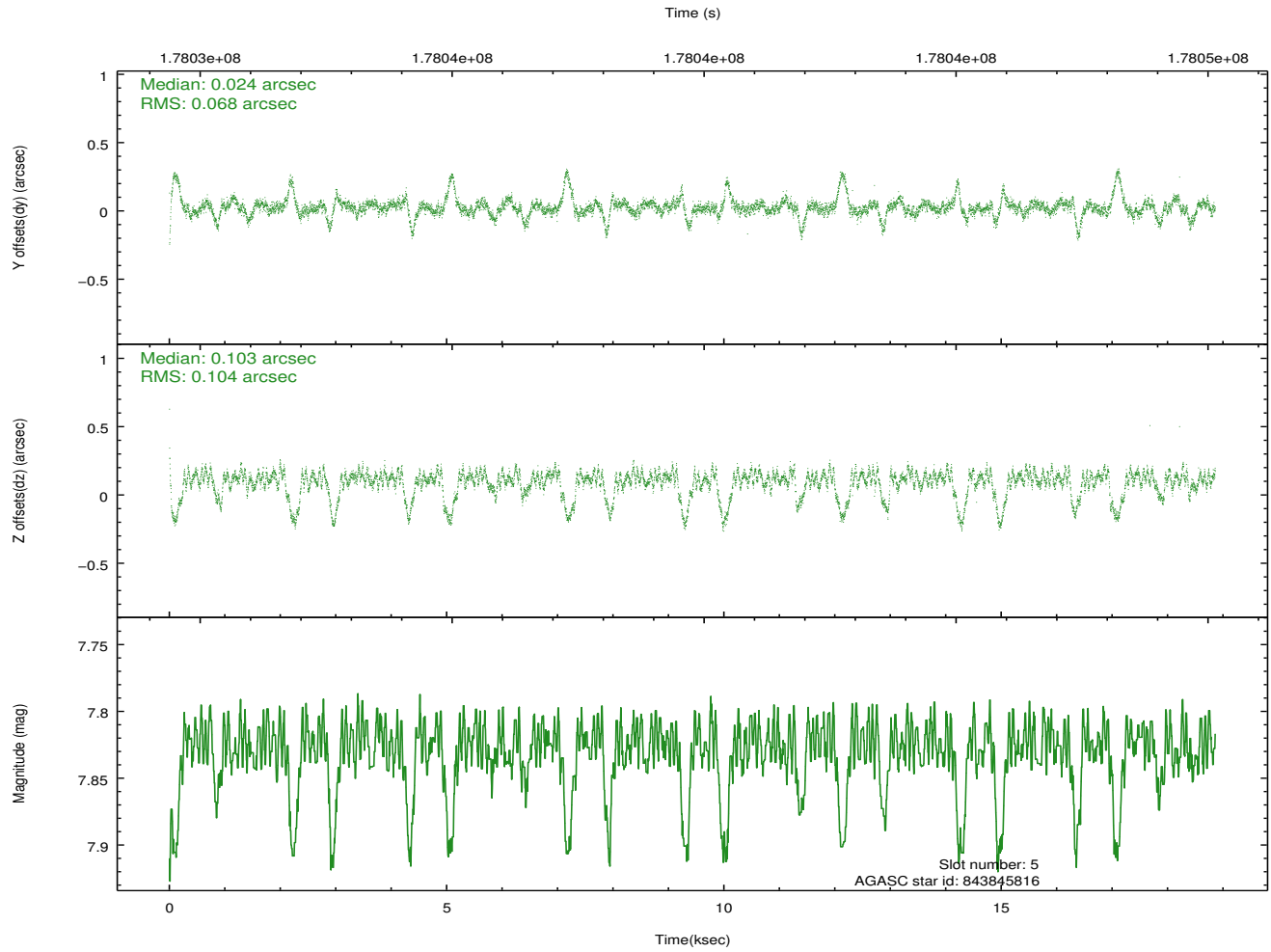
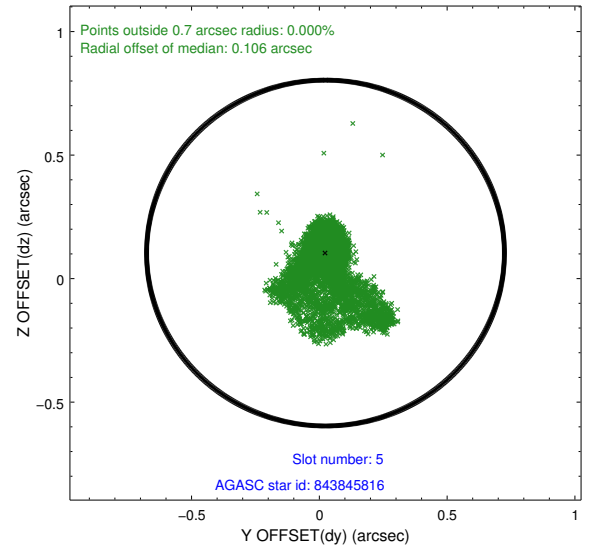
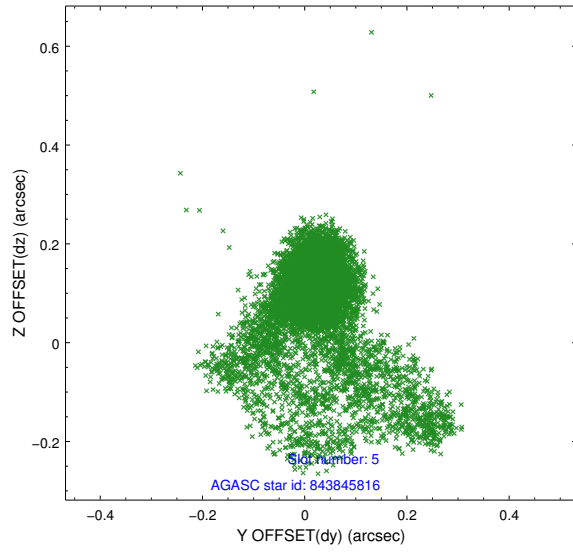


## 2.4.2 Slot 4

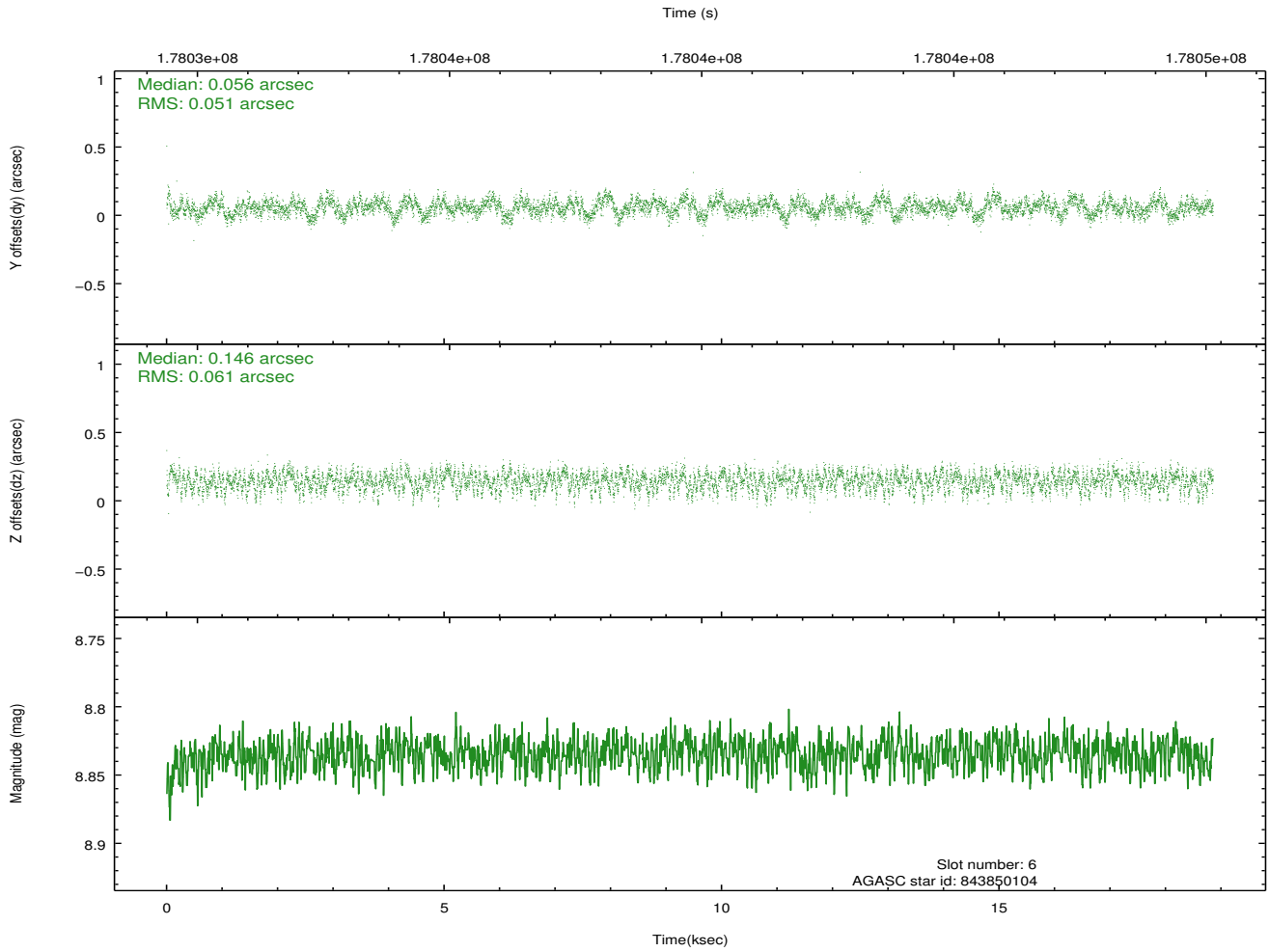
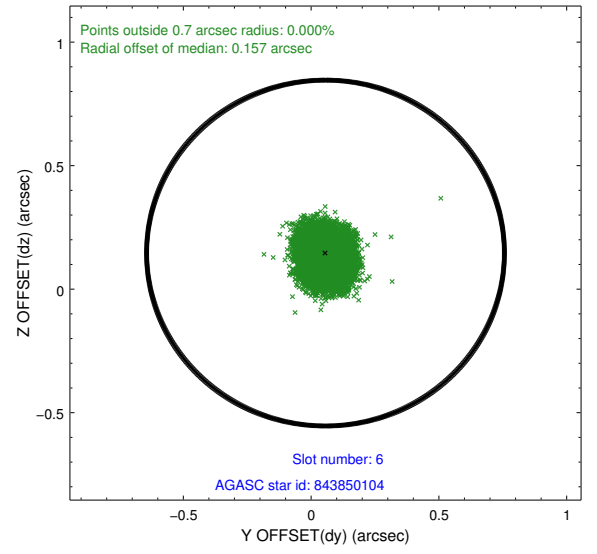
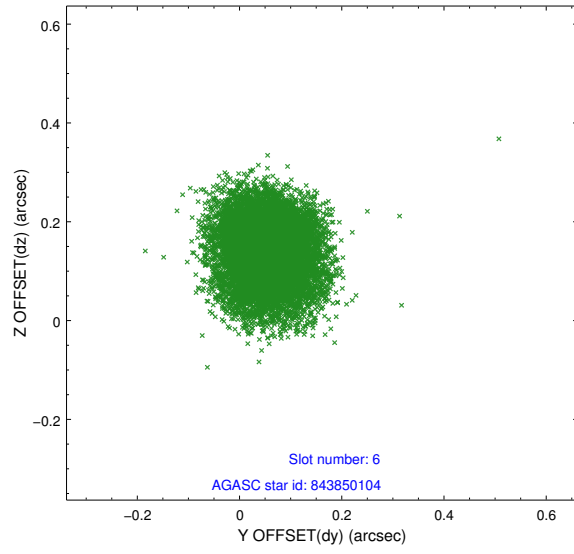




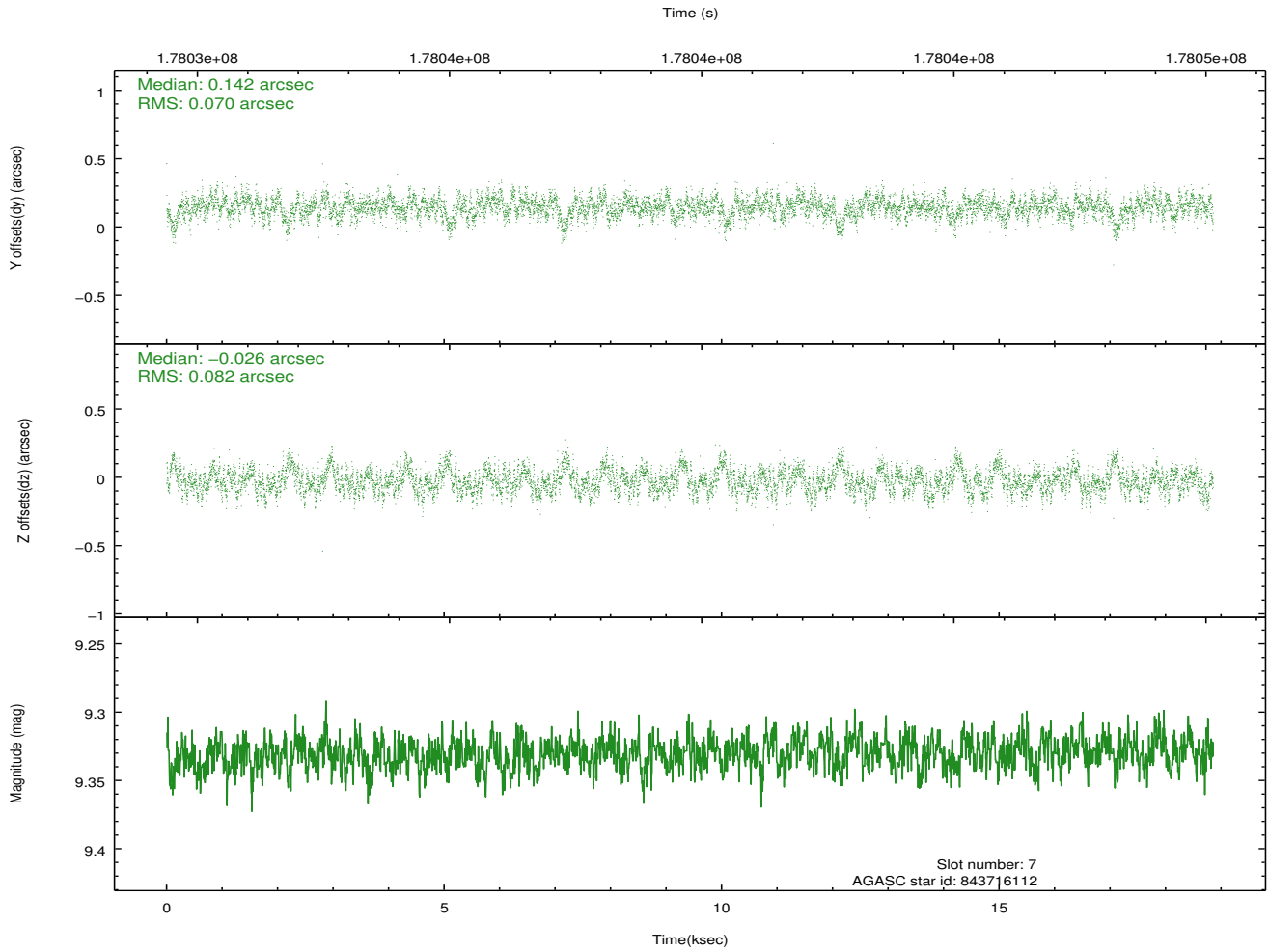
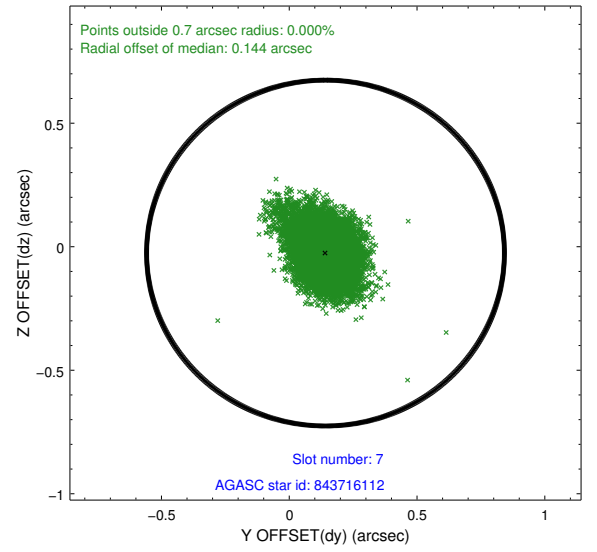
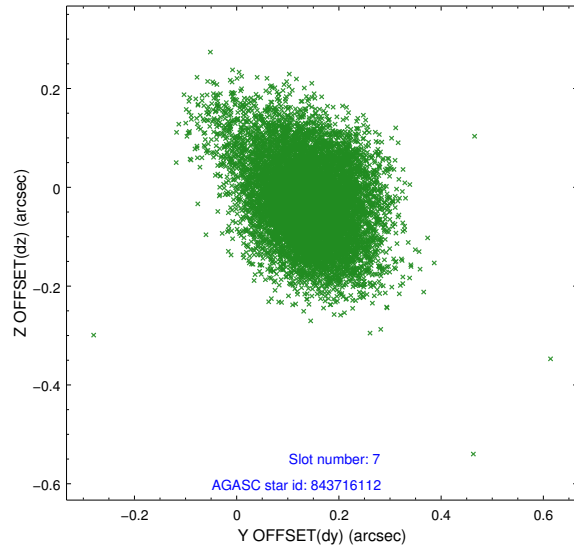
### 2.4.3 Slot 5



## 2.4.4 Slot 6

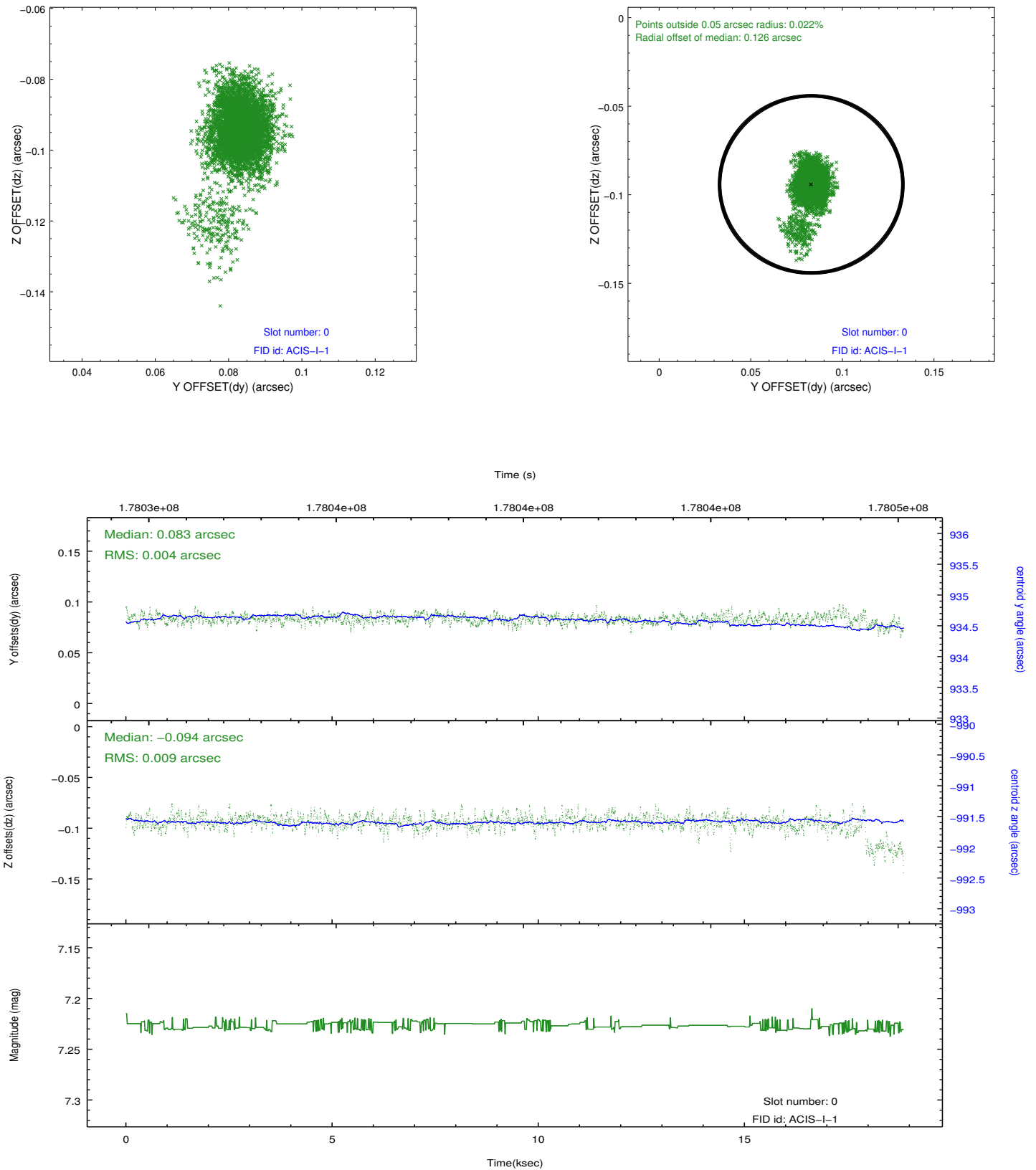


## 2.4.5 Slot 7

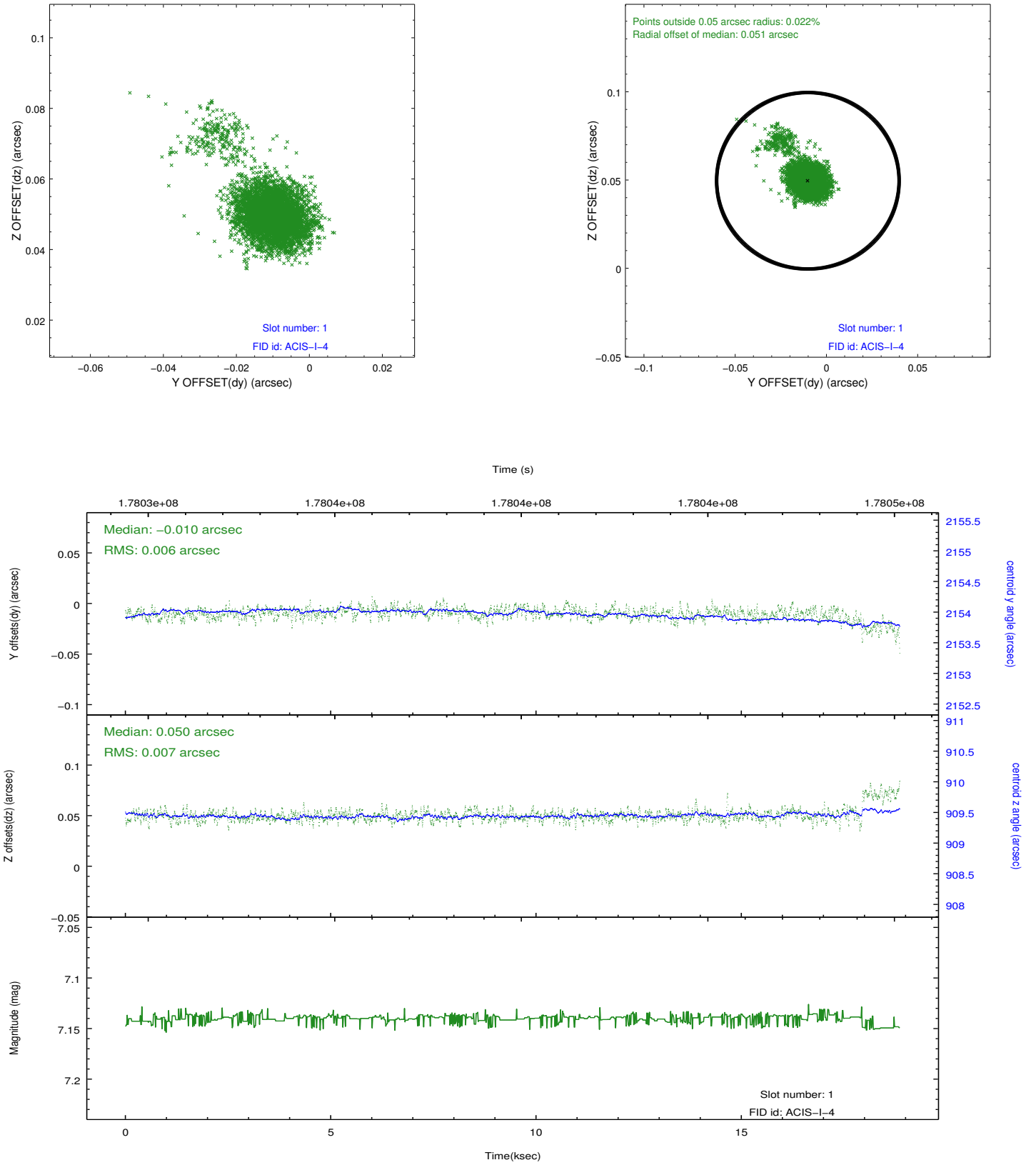


## 2.5 FID Slots

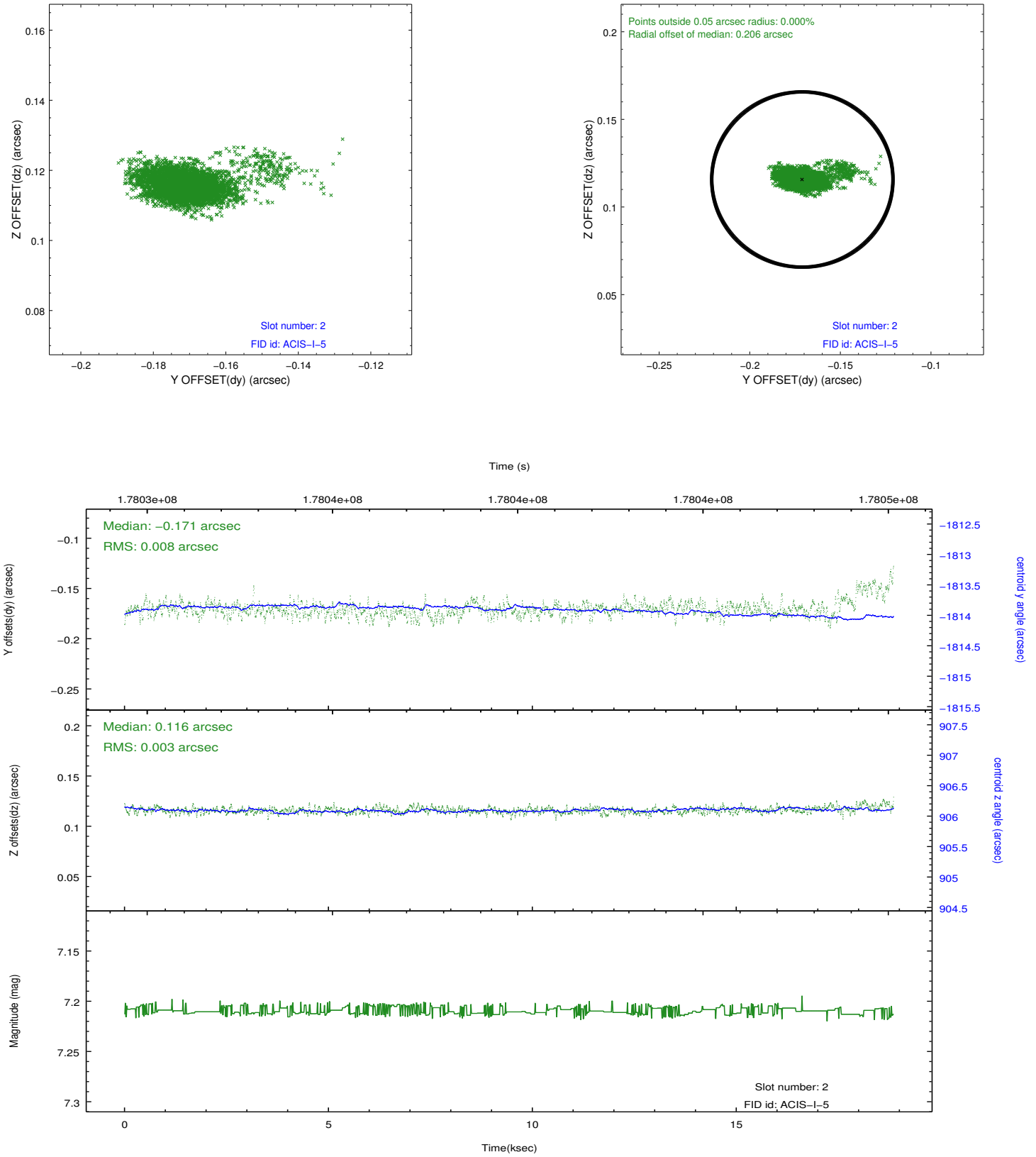
### 2.5.1 Slot 0



## 2.5.2 Slot 1



### 2.5.3 Slot 2



## A Summary

### A.1 Status

V&V Scientist	Jen Lauer
V&V Date (YYYY-MM-DD)	2012.11.28
V&V Edition	1
V&V Disposition and Status	OK
V&V Charge Time	18.72

### A.2 Comments