

V&V Reference Report

L2 ASCDS Version : 7.6.8

Observation 3581 - L2 Version 001
Chandra X-Ray Center

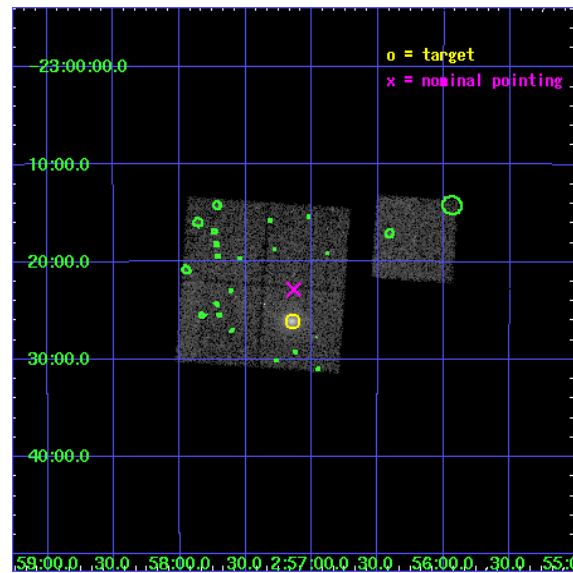
L2 Processing Date : Jul 7 2006

Contents

1	Front	2
2	OBI	3
2.1	OBI	3
2.1.1	Images	3
2.1.2	Bias	3
2.1.3	Parameters	4
2.1.4	Events	4
2.2	Compared Parameters	5
2.3	Aspect	6
2.4	Star Slots	9
2.4.1	Slot 3	9
2.4.2	Slot 4	10
2.4.3	Slot 5	11
2.4.4	Slot 6	12
2.4.5	Slot 7	13
2.5	FID Slots	14
2.5.1	Slot 0	14
2.5.2	Slot 1	15
2.5.3	Slot 2	16
3	Point Sources	17
A	Summary	18
A.1	Status	18
A.2	Comments	18

1 Front

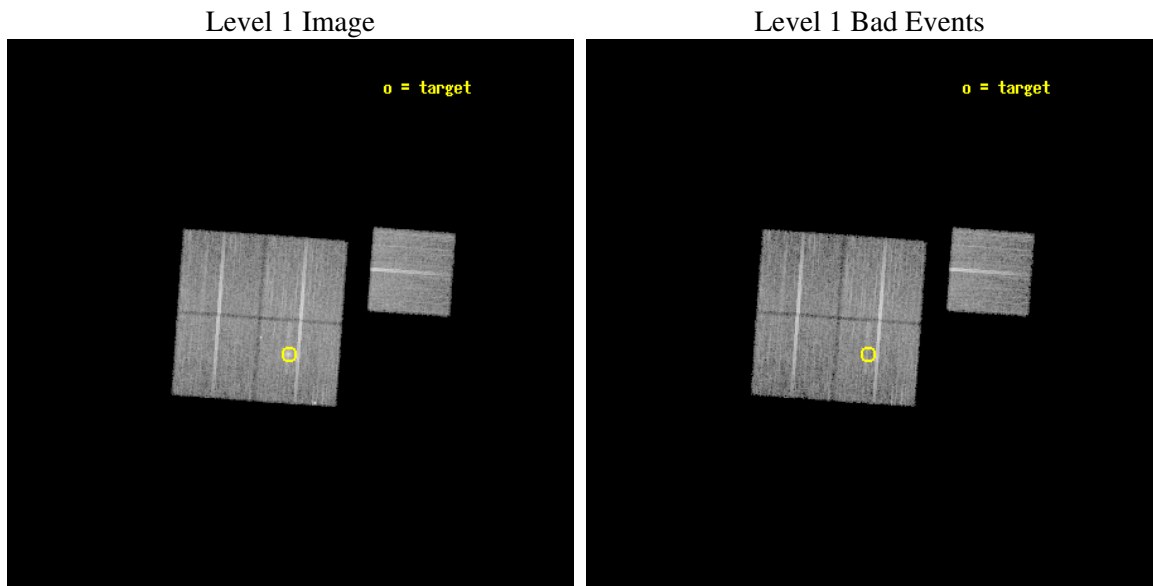
seq_num	800302
obs_id	3581
title	X-RAY/SZ DETERMINATION OF COSMOLOGICAL PARAMETERS
observer	DR. LEON VANSPEYBROECK
object	MACS-J0257.1-2325
dtcycle	0
cycle	P
ra_targ	44.285833
dec_targ	-23.435
ra_nom	44.283743118323
dec_nom	-23.38073355401
roll_nom	94.135971884294
revision	2
ontime	18717.799964011
livetime	18473.238127637
ontime0	18717.799964011
ontime1	18717.799964011
ontime2	18717.799964011
ontime3	18717.799964011
ontime6	18717.799964011
l2events	48041



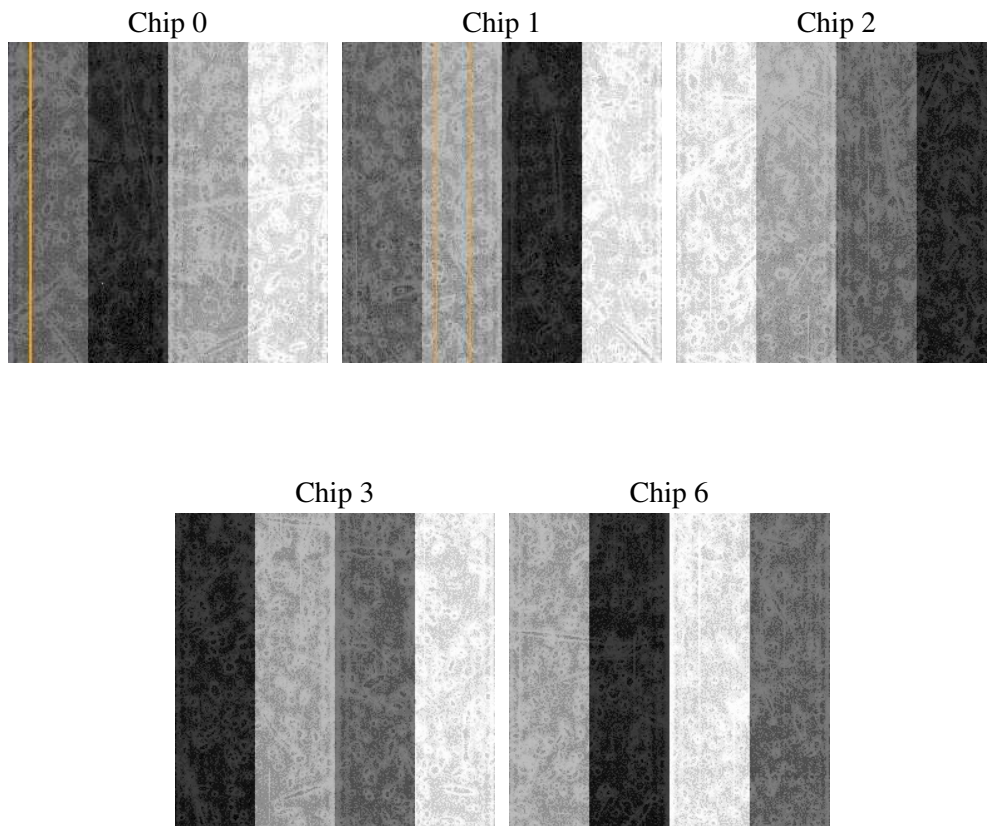
2 OBI

2.1 OBI

2.1.1 Images



2.1.2 Bias



2.1.3 Parameters

obi_num	0
ascdsver	7.6.8
caldbver	3.2.2
date	2006-07-07T13:33:22
revision	2

sched_exp_time	18600.000000
ontime	18723.533281386
ontime0	18723.533281386
ontime1	18723.533281386
ontime2	18723.533281386
ontime3	18723.533281386
ontime6	18723.533261478
l1events	500482

2.1.4 Events

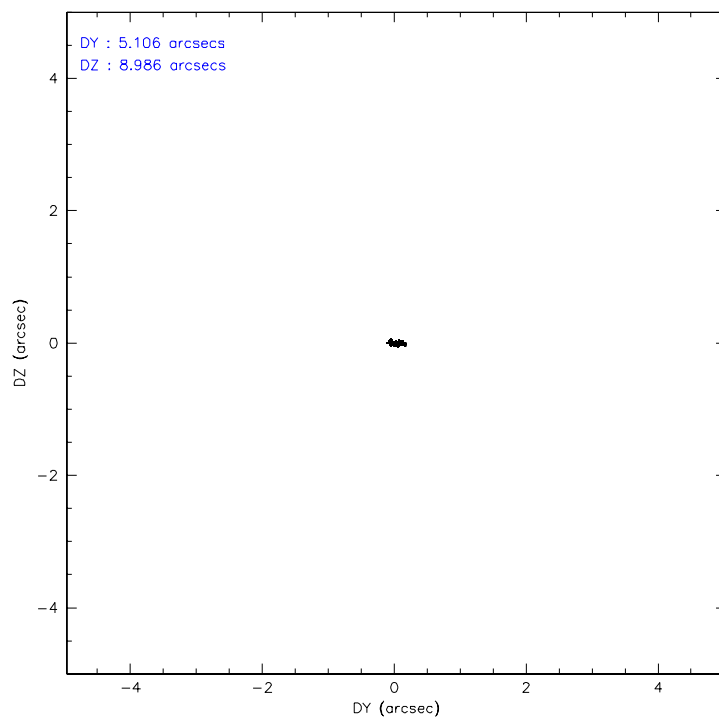
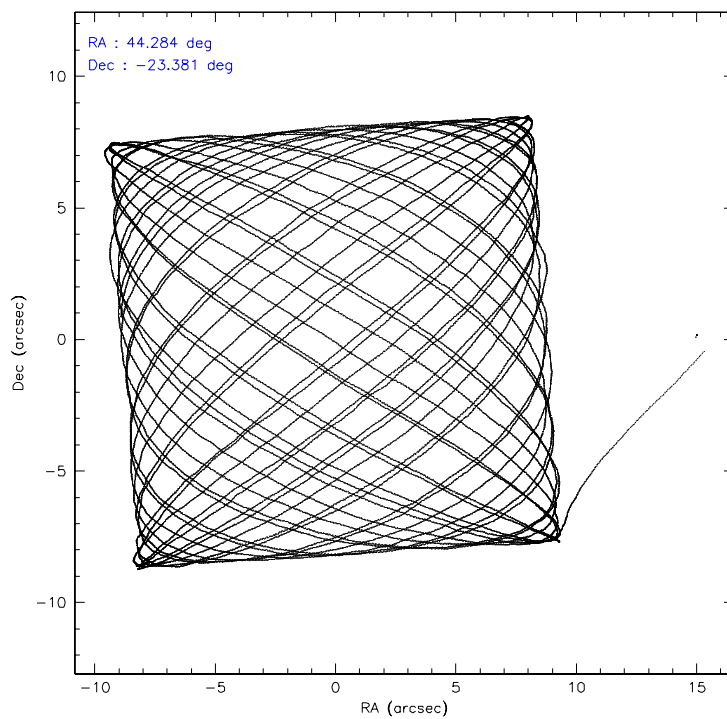
	ccd 0	ccd 1	ccd 2	ccd 3	ccd 6
level 1 events	91840	91098	107415	106997	103132
rejected events	81735	79623	97652	92055	92569
rejected %	88%	87%	90%	86%	89%

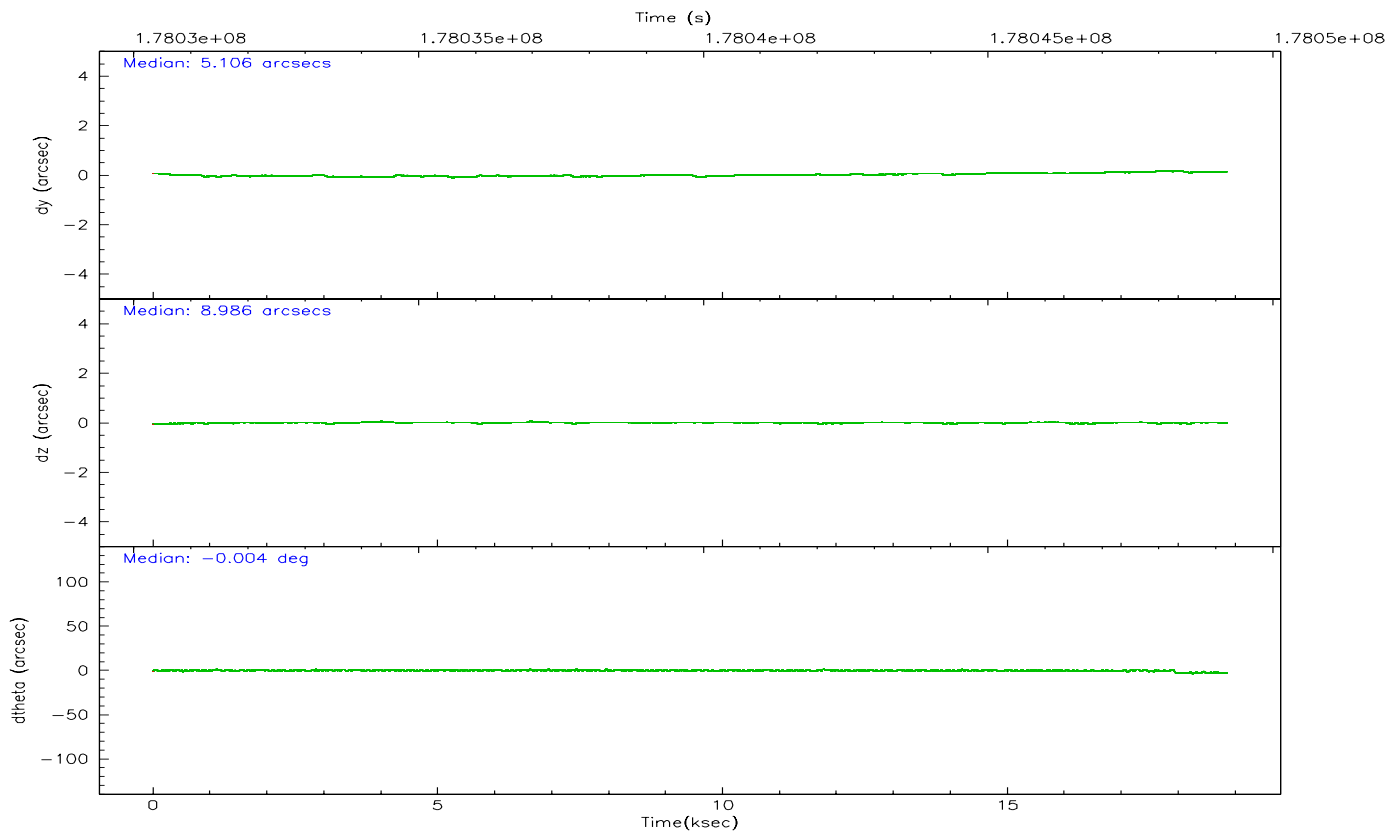
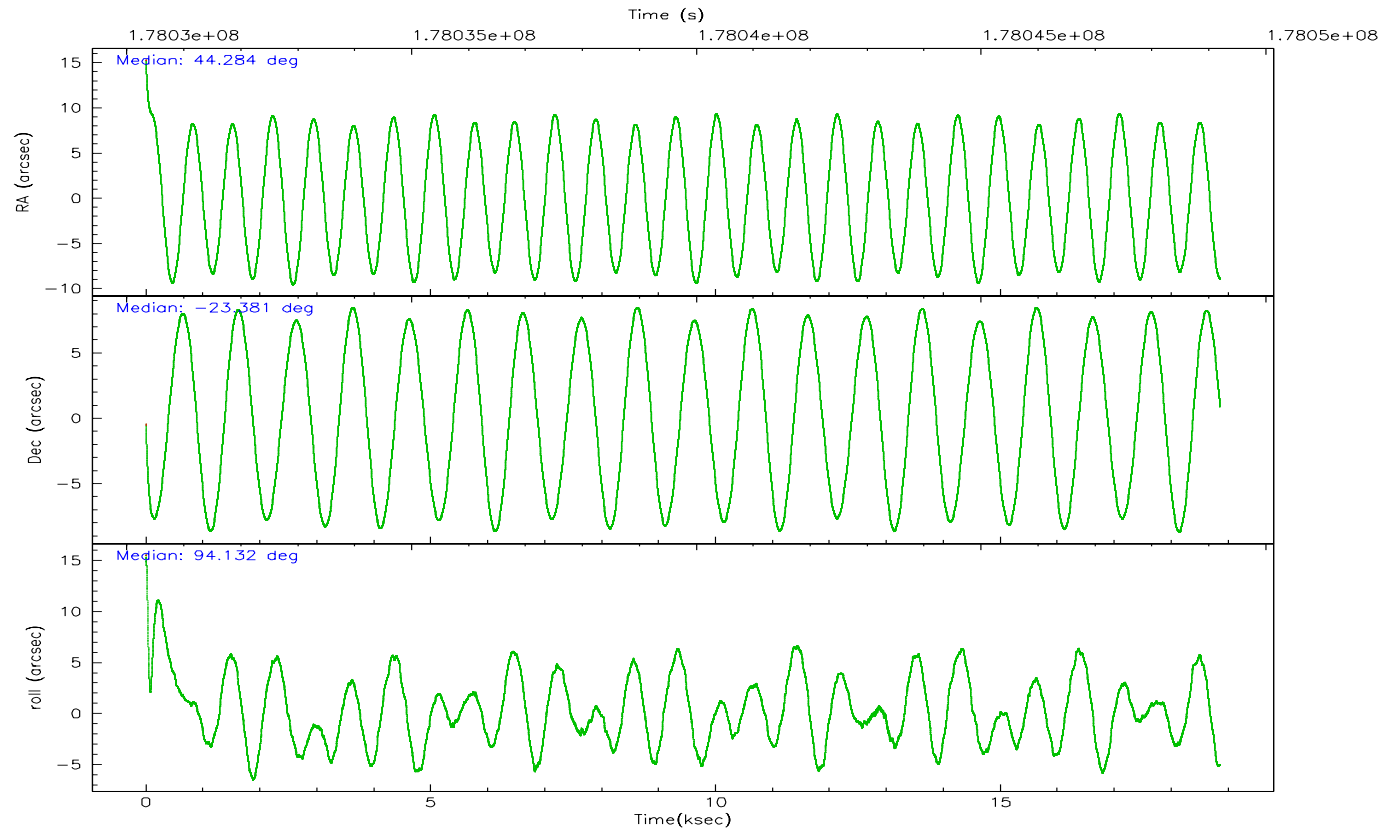
	ccd 0	ccd 1	ccd 2	ccd 3	ccd 6
grade 0 events	3619	4450	3593	8004	3948
	3%	4%	3%	7%	3%
grade 1 events	39	40	53	95	44
	0%	0%	0%	0%	0%
grade 2 events	2298	2370	2227	2557	2121
	2%	2%	2%	2%	2%
grade 3 events	1223	1276	1068	1214	1214
	1%	1%	0%	1%	1%
grade 4 events	1099	1234	1093	1206	1163
	1%	1%	1%	1%	1%
grade 5 events	3433	3661	3353	3937	3896
	3%	4%	3%	3%	3%
grade 6 events	1870	2148	1785	1961	2118
	2%	2%	1%	1%	2%
grade 7 events	78259	75919	94243	88023	88628
	85%	83%	87%	82%	85%

2.2 Compared Parameters

Parameter	Planned	Actual	Parameter	Planned	Actual
Instrument	ACIS	ACIS	Obspar format version number	6	6
Detector	ACIS-01236	ACIS-01236	Obspar file type	PREDICTED	ACTUAL
Grating	NONE	NONE	Obspar update status	NONE	UPDATED
Data mode	VFAINT	VFAINT	On-chip summing requested	N	N
Observation mode	POINTING	POINTING	Subarray requested	NONE	NONE
Pointing RA	44.300576	44.28374311832268	Alternating exposures requested	N	N
Pointing Dec	-23.403336	-23.38073355401016	Primary exposure time	0.000000	3.1
Pointing Roll	93.933954	94.13597188429439			
SIM focus pos (mm)	-0.782348	-0.7809083437167272			
SIM defocus (mm)	0	0.001439871863259334			
SIM translation stage pos (mm)	-225.840463	-225.8433433320239			
SIM translation stage offset (mm)	-7.752	-7.749109670905796			
Observation start time	178030598.184000	178029589.61167			
Observation start date	2003-08-23T12:55:34	2003-08-23T12:39:49			
Observation end time	178049198.184000	178050083.46255			
Observation end date	2003-08-23T18:05:34	2003-08-23T18:21:23			
Read mode	TIMED	TIMED			

2.3 Aspect



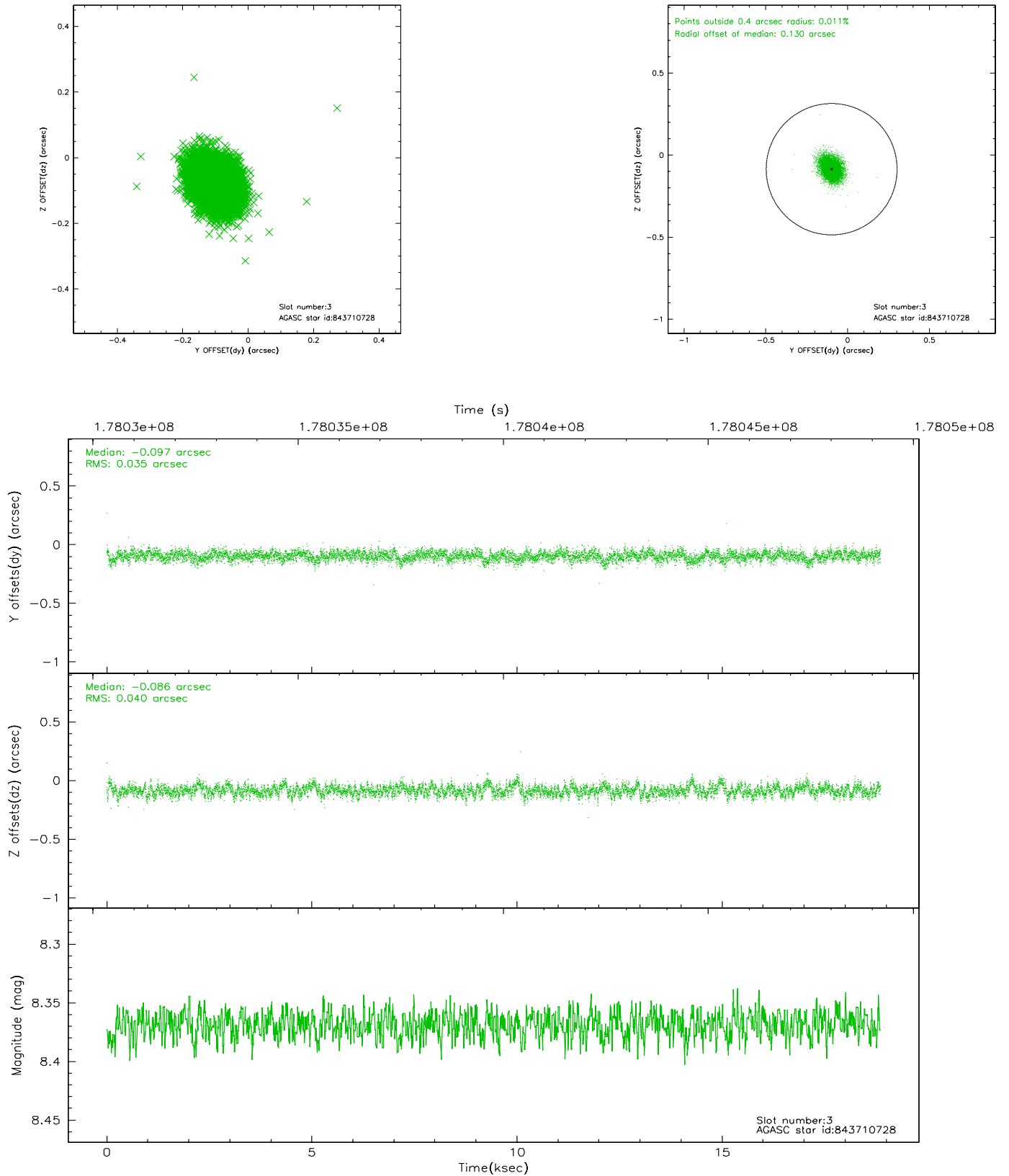


Slot Statistics

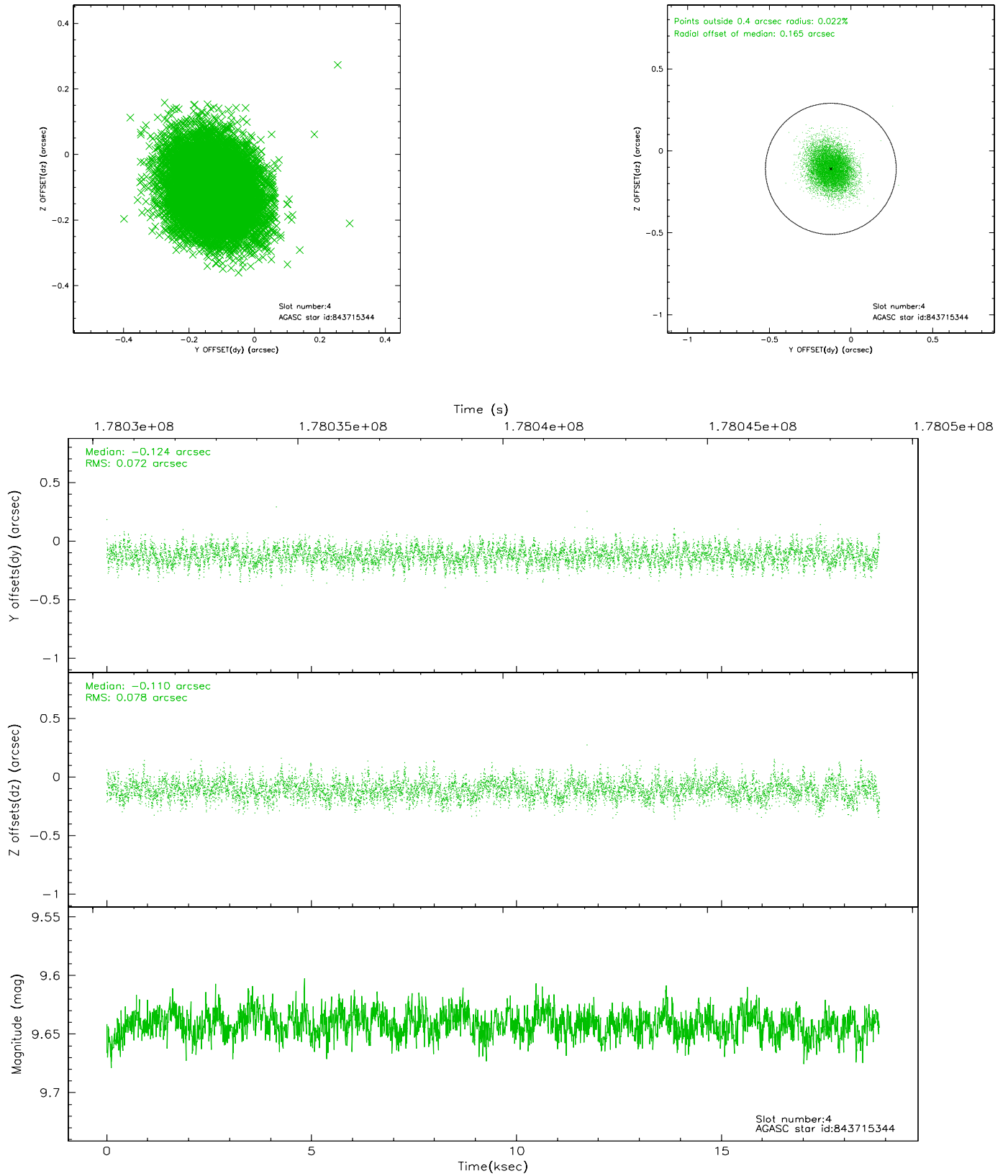
slot	status	id	mag	n_pts	med_dy	med_dz	dr1	dr2	ra	dec	mean_y	mean_z
0	FID	ACIS-I-1	7.23	4600	0.074	-0.071	0.008	0.019	0.000000	0.000000	934.58	-991.55
1	FID	ACIS-I-4	7.14	4599	-0.042	0.038	0.007	0.016	0.000000	0.000000	2154.12	909.24
2	FID	ACIS-I-5	7.21	4599	-0.130	0.104	0.006	0.014	0.000000	0.000000	-1813.41	906.30
3	GUIDE	843710728	8.37	9196	-0.097	-0.086	0.056	0.092	44.214884	-22.985501	1520.09	180.40
4	GUIDE	843715344	9.64	9195	-0.124	-0.110	0.113	0.182	43.754026	-23.341523	342.44	1787.46
5	GUIDE	843845816	7.83	9198	0.024	0.103	0.086	0.293	44.829539	-23.689415	-1149.94	-1668.66
6	GUIDE	843850104	8.83	9199	0.056	0.146	0.086	0.136	44.929885	-23.381676	-69.27	-2079.34
7	GUIDE	843716112	9.33	9196	0.142	-0.026	0.113	0.190	43.925003	-24.083321	-2359.05	1399.38

2.4 Star Slots

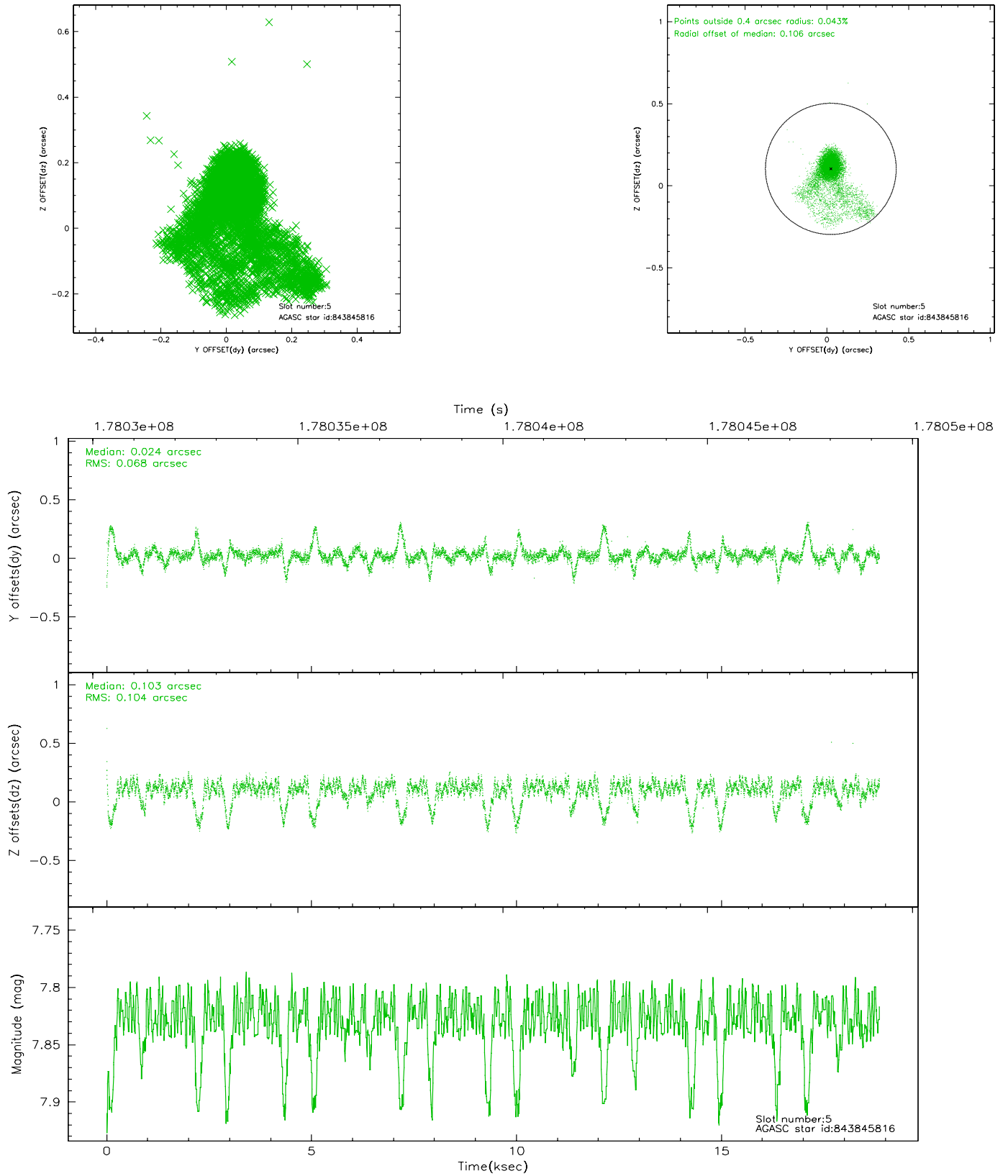
2.4.1 Slot 3



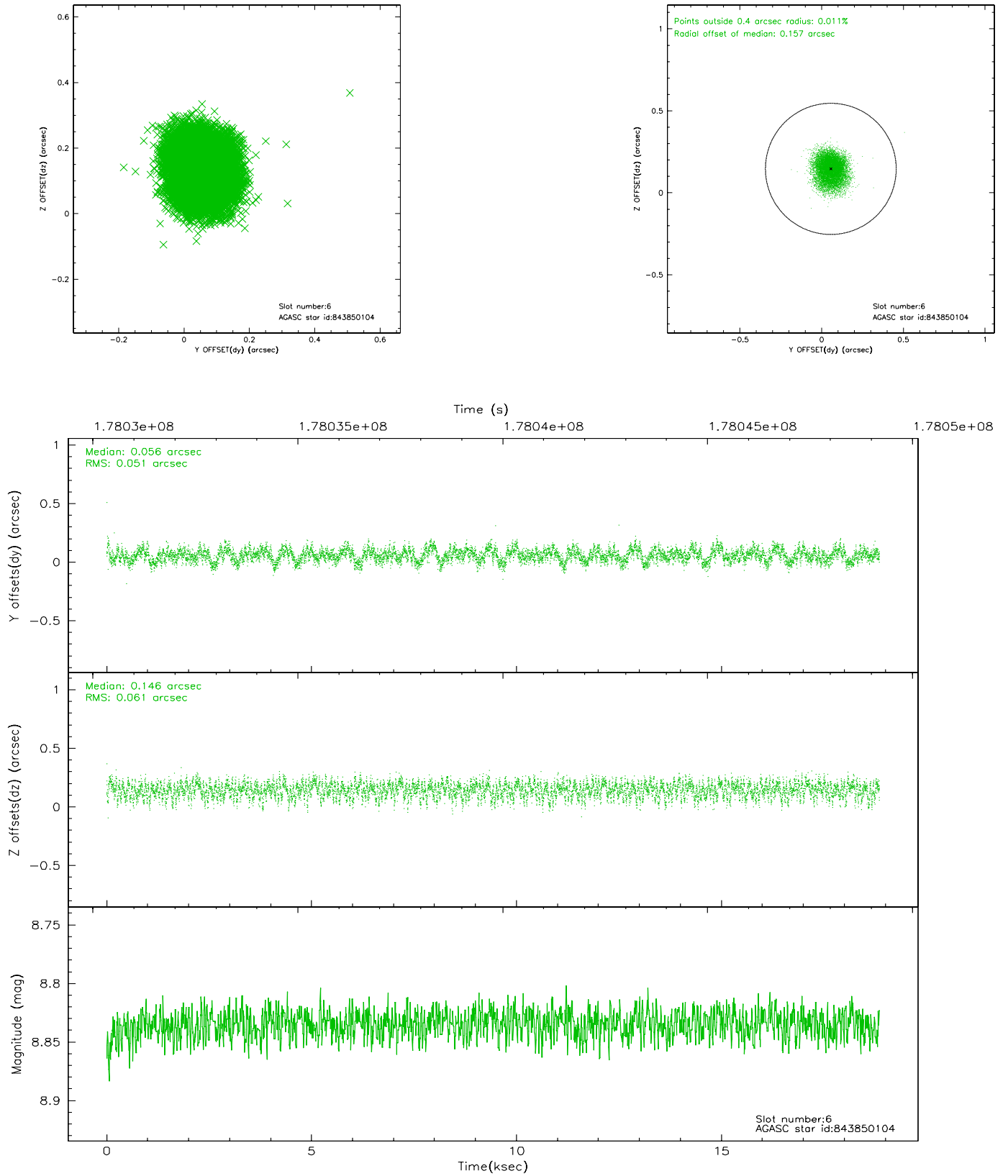
2.4.2 Slot 4



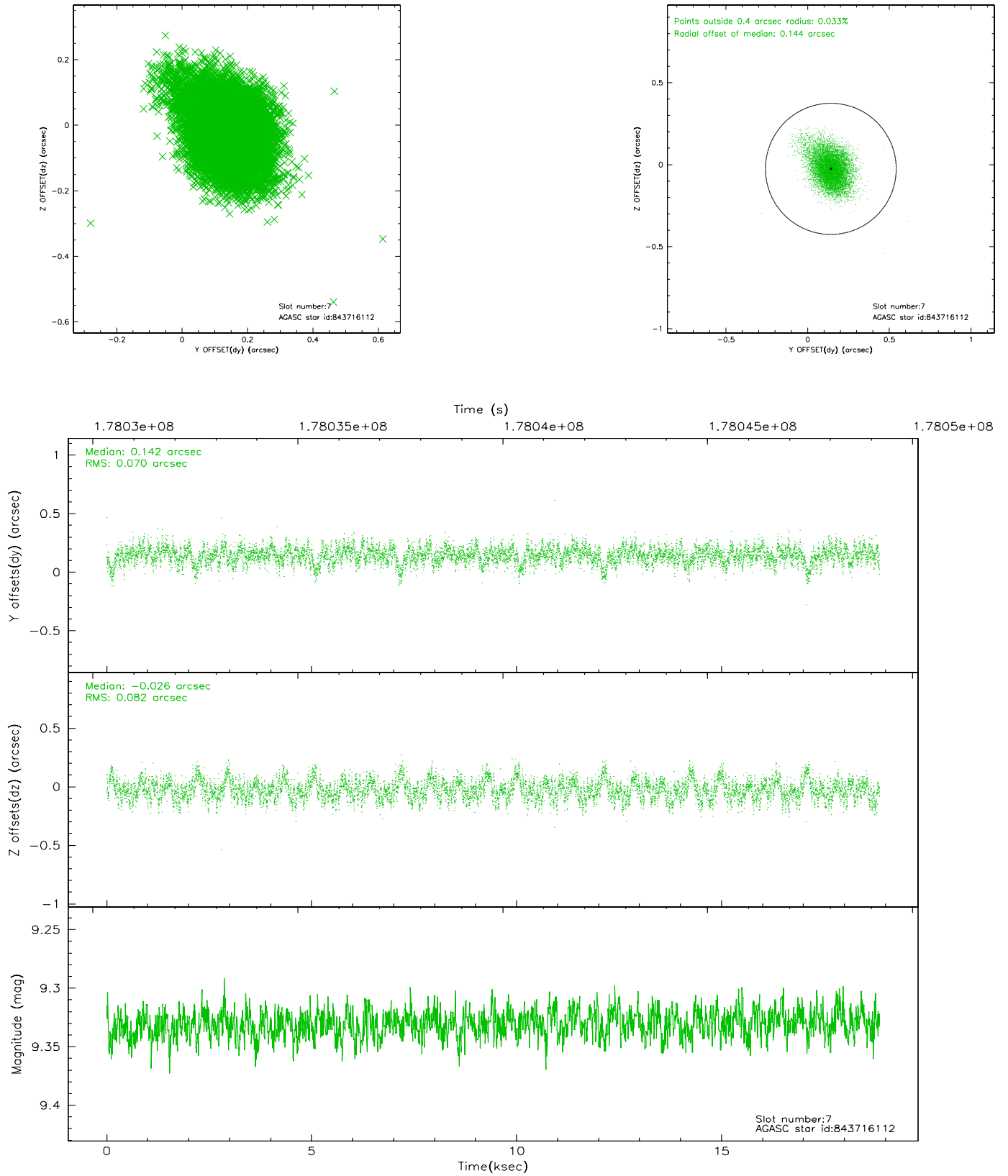
2.4.3 Slot 5



2.4.4 Slot 6

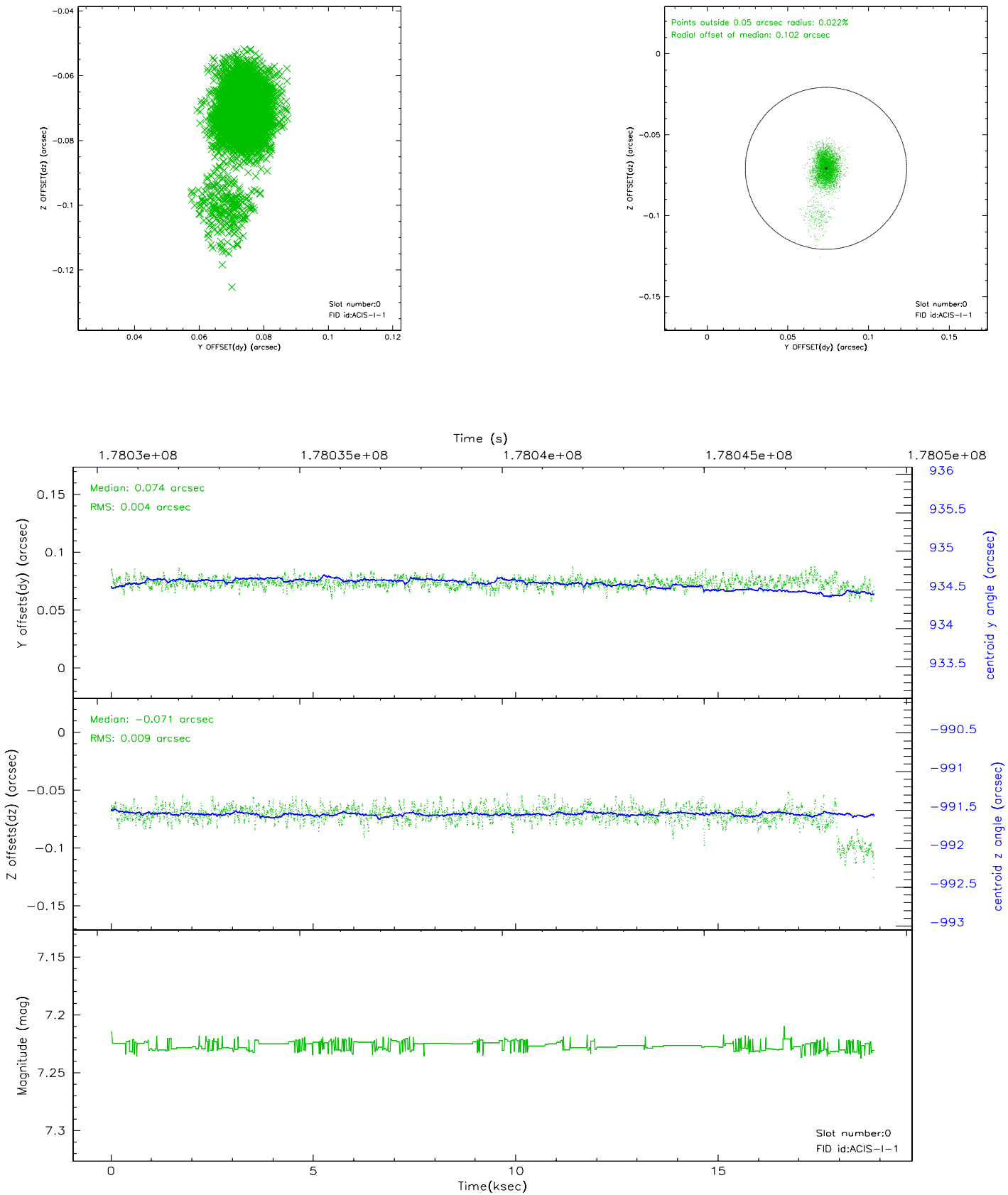


2.4.5 Slot 7

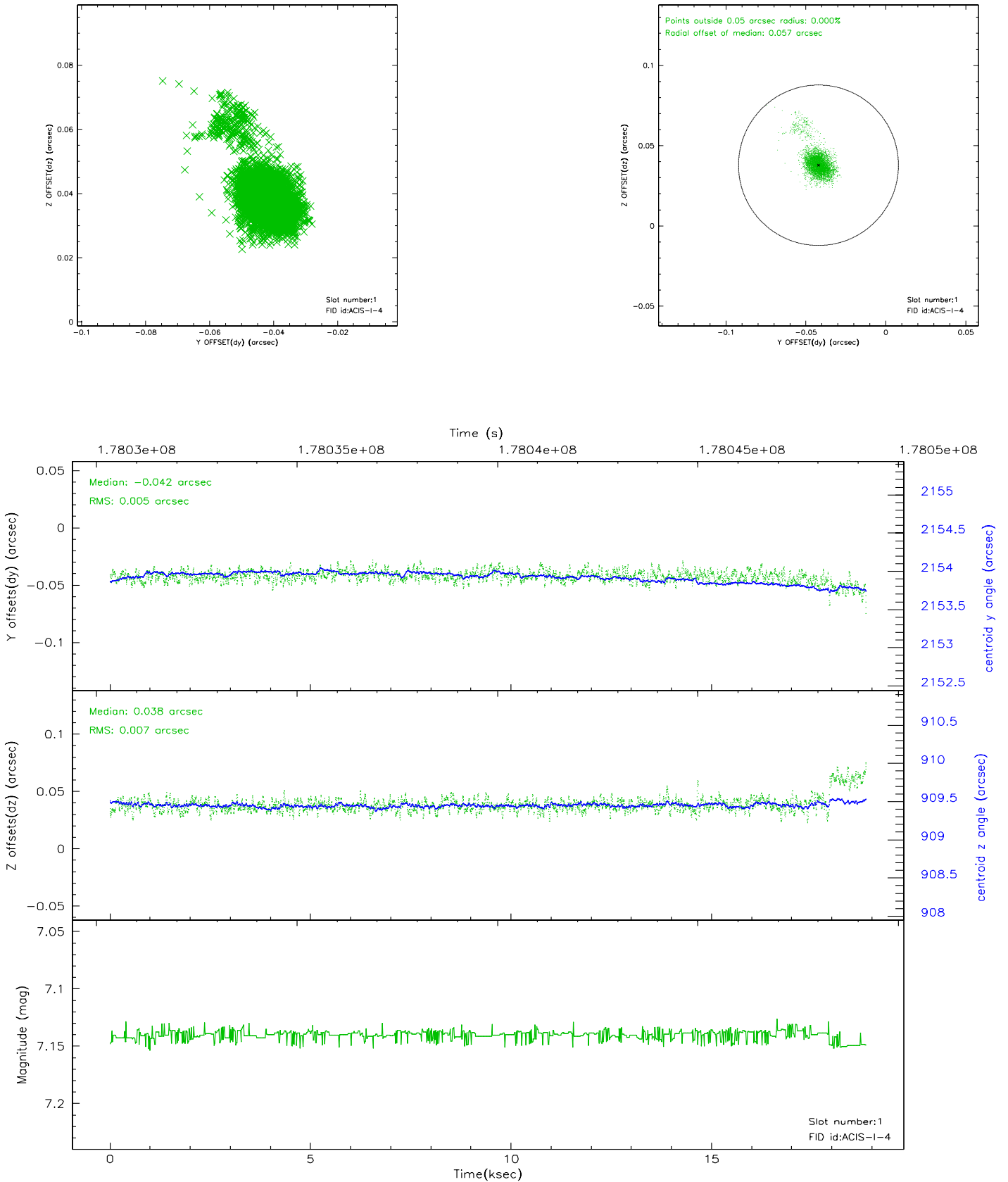


2.5 FID Slots

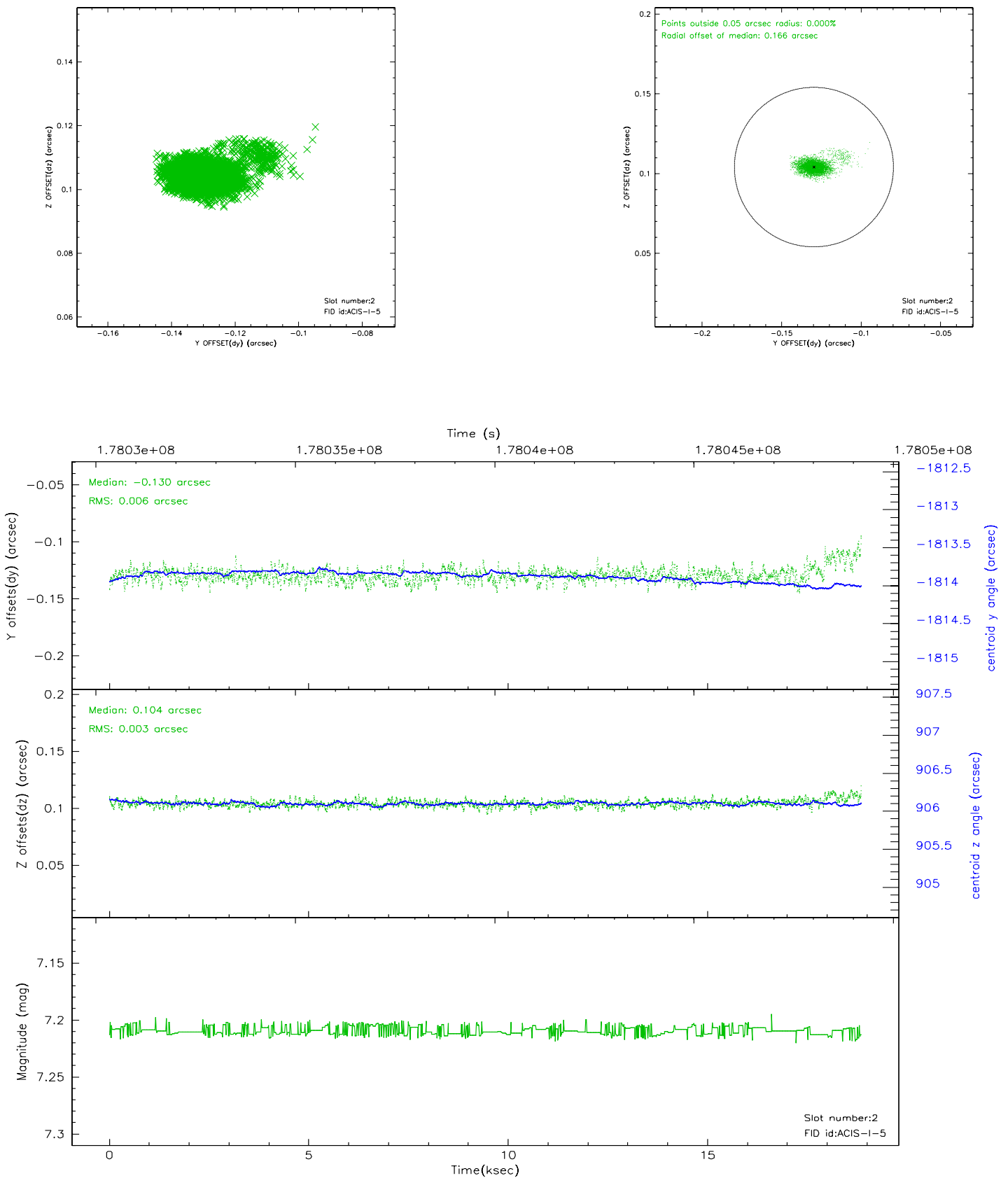
2.5.1 Slot 0



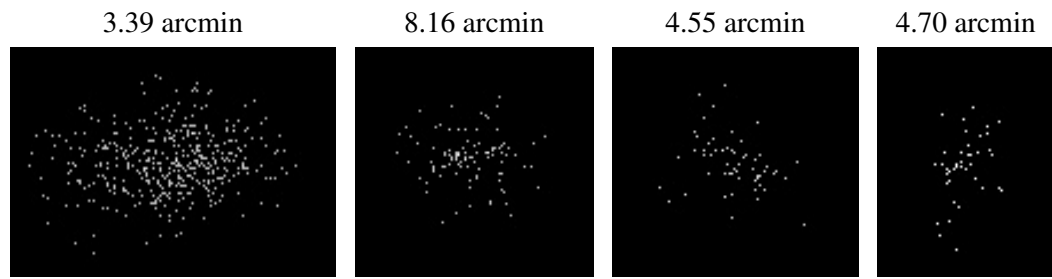
2.5.2 Slot 1



2.5.3 Slot 2



3 Point Sources



A Summary

A.1 Status

V&V Scientist	Jen Lauer
V&V Date (YYYY-MM-DD)	2006.07.07
V&V Edition	1
V&V Disposition and Status	OK
V&V Charge Time	18.72

A.2 Comments