

# V&V Reference Report

## L2 ASCDS Version : 7.6.9

Observation 3571 - L2 Version 001  
Chandra X-Ray Center

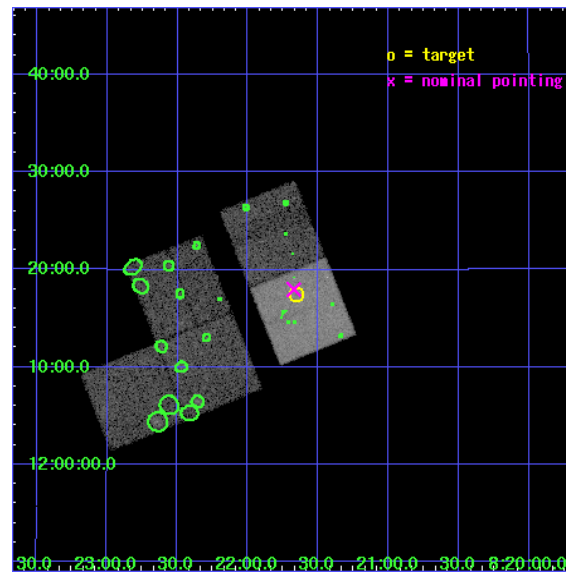
L2 Processing Date : Oct 15 2006

## Contents

<b>1</b>	<b>Front</b>	<b>2</b>
<b>2</b>	<b>OBI</b>	<b>3</b>
2.1	OBI . . . . .	3
2.1.1	Images . . . . .	3
2.1.2	Bias . . . . .	3
2.1.3	Parameters . . . . .	4
2.1.4	Events . . . . .	4
2.2	Compared Parameters . . . . .	5
2.3	Aspect . . . . .	6
2.4	Star Slots . . . . .	9
2.4.1	Slot 3 . . . . .	9
2.4.2	Slot 4 . . . . .	10
2.4.3	Slot 5 . . . . .	11
2.4.4	Slot 6 . . . . .	12
2.4.5	Slot 7 . . . . .	13
2.5	FID Slots . . . . .	14
2.5.1	Slot 0 . . . . .	14
2.5.2	Slot 1 . . . . .	15
2.5.3	Slot 2 . . . . .	16
<b>3</b>	<b>Point Sources</b>	<b>17</b>
<b>A</b>	<b>Summary</b>	<b>18</b>
A.1	Status . . . . .	18
A.2	Comments . . . . .	18

# 1 Front

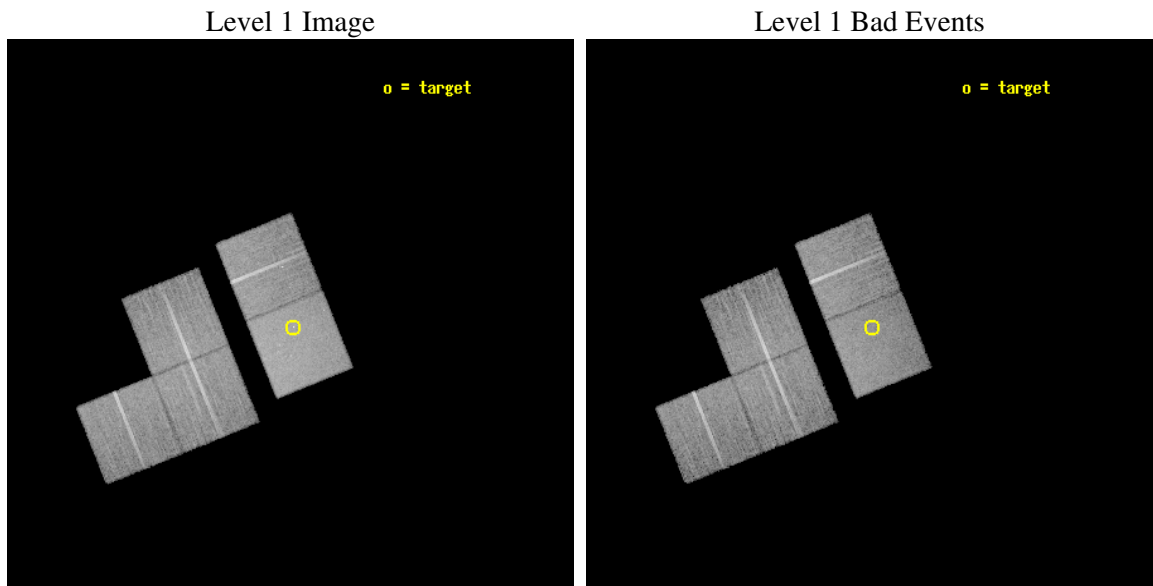
seq_num	700633
obs_id	3571
title	A STUDY OF QUASAR EVOLUTION WITH THE AID OF LENSING
observer	Professor Gordon Garmire
object	HS0818+1227
dtcycle	0
cycle	P
ra_targ	125.412917
dec_targ	12.291389
ra_nom	125.41817349829
dec_nom	12.299569445178
roll_nom	68.031068541015
revision	2
ontime	20029.099961489
livetime	19767.405025284
ontime1	20029.099961489
ontime2	20025.958981276
ontime3	20029.099961489
ontime6	20022.817981094
ontime7	20029.099961489
l2events	109314



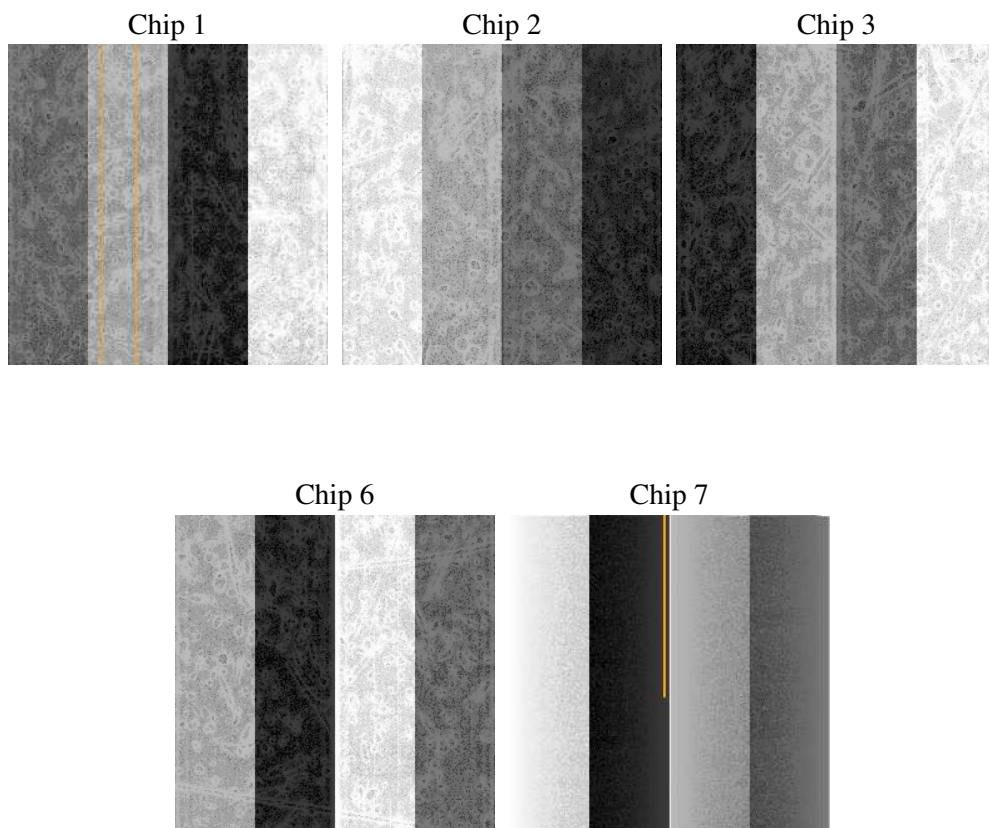
## 2 OBI

### 2.1 OBI

#### 2.1.1 Images



#### 2.1.2 Bias



### 2.1.3 Parameters

obi_num	0
ascdsver	7.6.9
caldbver	3.2.3
date	2006-10-15T04:21:07
revision	2

sched_exp_time	19851.000000
ontime	20718.101174772
ontime1	20718.101154834
ontime2	20714.960194558
ontime3	20718.101174772
ontime6	20711.819194376
ontime7	20718.101174772
l1events	650403

### 2.1.4 Events

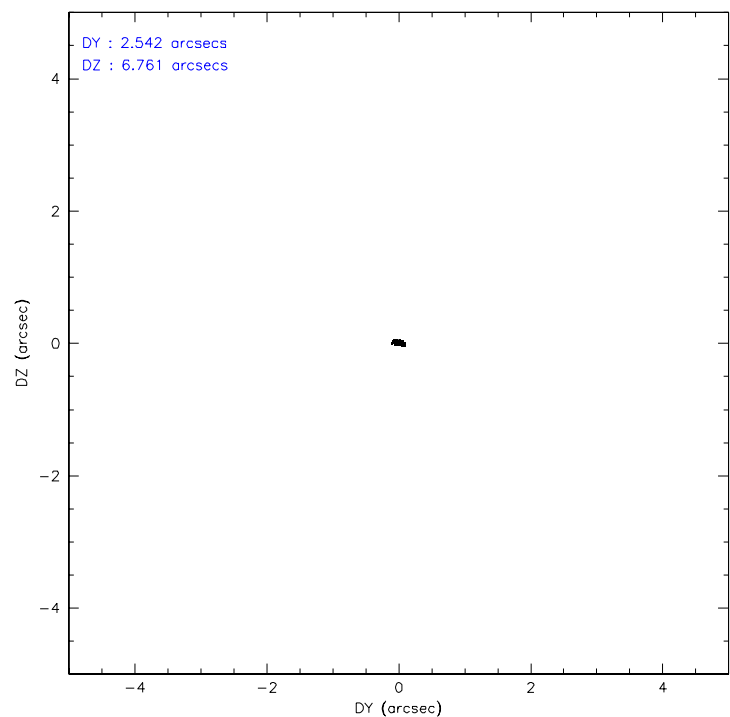
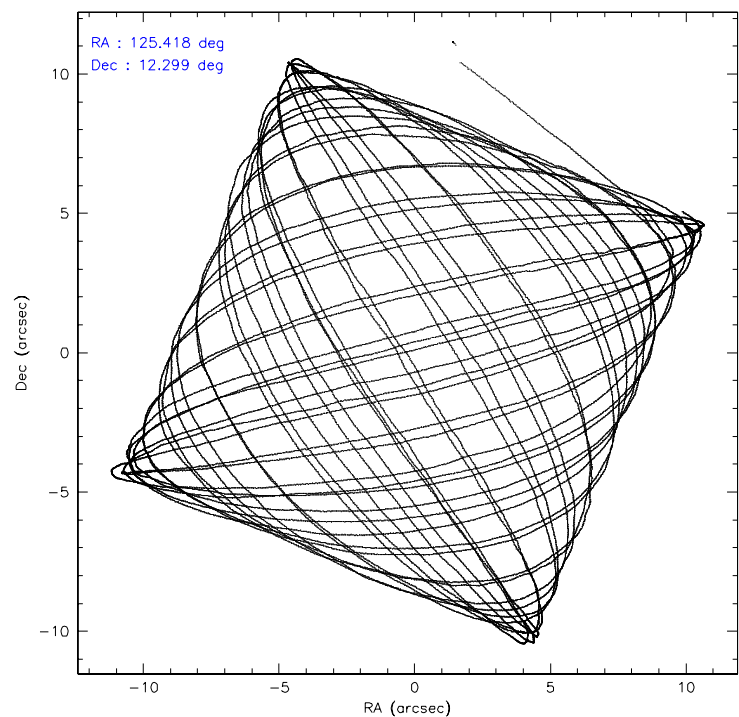
	ccd 1	ccd 2	ccd 3	ccd 6	ccd 7
level 1 events	112416	122355	122772	127838	165022
rejected events	97353	108518	108707	113008	104655
rejected %	86%	88%	88%	88%	63%

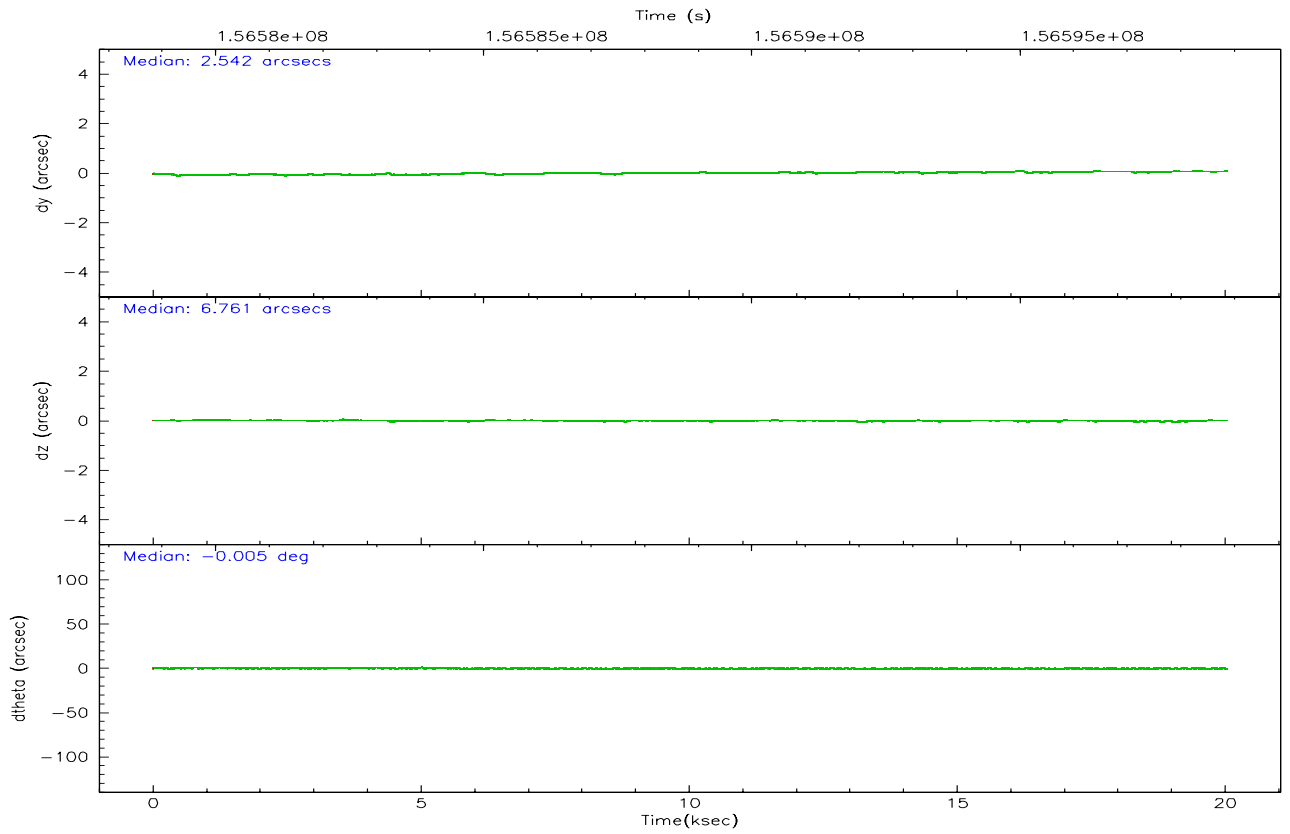
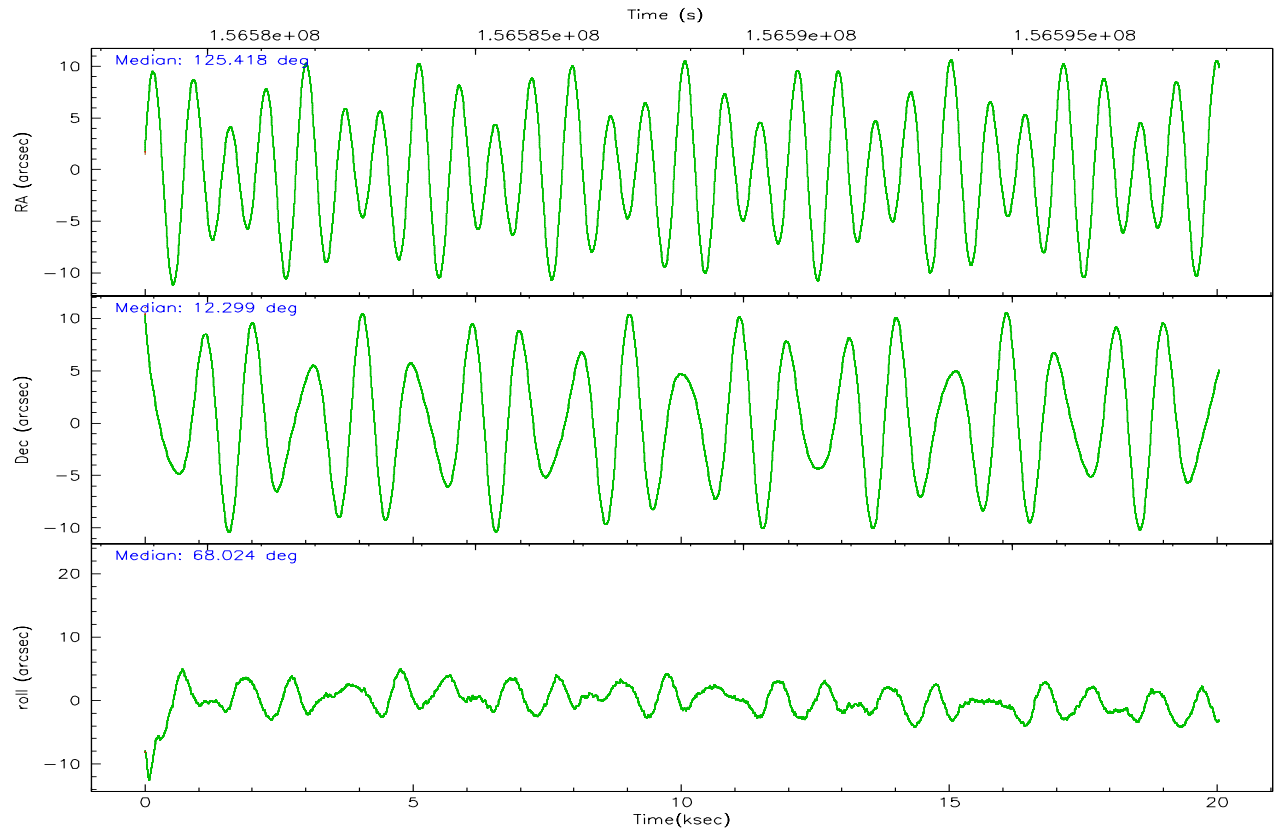
	ccd 1	ccd 2	ccd 3	ccd 6	ccd 7
grade 0 events	6223	6298	6457	6265	3947
	5%	5%	5%	4%	2%
grade 1 events	57	71	69	52	106
	0%	0%	0%	0%	0%
grade 2 events	3216	2817	2741	3024	15151
	2%	2%	2%	2%	9%
grade 3 events	1536	1419	1356	1545	3197
	1%	1%	1%	1%	1%
grade 4 events	1551	1396	1486	1431	3077
	1%	1%	1%	1%	1%
grade 5 events	5073	4653	5355	5623	10651
	4%	3%	4%	4%	6%
grade 6 events	3033	2401	2535	3042	37085
	2%	1%	2%	2%	22%
grade 7 events	91727	103300	102773	106856	91808
	81%	84%	83%	83%	55%

## 2.2 Compared Parameters

Parameter	Planned	Actual	Parameter	Planned	Actual
Instrument	ACIS	ACIS	Obspar format version number	6	6
Detector	ACIS-12367	ACIS-12367	Obspar file type	PREDICTED	ACTUAL
Grating	NONE	NONE	Obspar update status	NONE	UPDATED
Data mode	VFAINT	VFAINT	Number of optional ACIS chips dropped	0	0
Observation mode	POINTING	POINTING	On-chip summing requested	N	N
Pointing RA	125.422439	125.4181734982898	Subarray requested	NONE	NONE
Pointing Dec	12.272674	12.29956944517807	Alternating exposures requested	N	N
Pointing Roll	67.873527	68.03106854101539	Primary exposure time	0.000000	3.1
SIM focus pos (mm)	-0.684267	-0.6828225247311905			
SIM defocus (mm)	0	0.001444936568705701			
SIM translation stage pos (mm)	-190.132523	-190.1400660498719			
SIM translation stage offset (mm)	0	0.00754346686406393			
Observation start time	156579018.184000	156577678.38013			
Observation start date	2002-12-18T06:09:14	2002-12-18T05:47:58			
Observation end time	156598869.184000	156599687.69354			
Observation end date	2002-12-18T11:40:05	2002-12-18T11:54:47			
Read mode	TIMED	TIMED			

## 2.3 Aspect





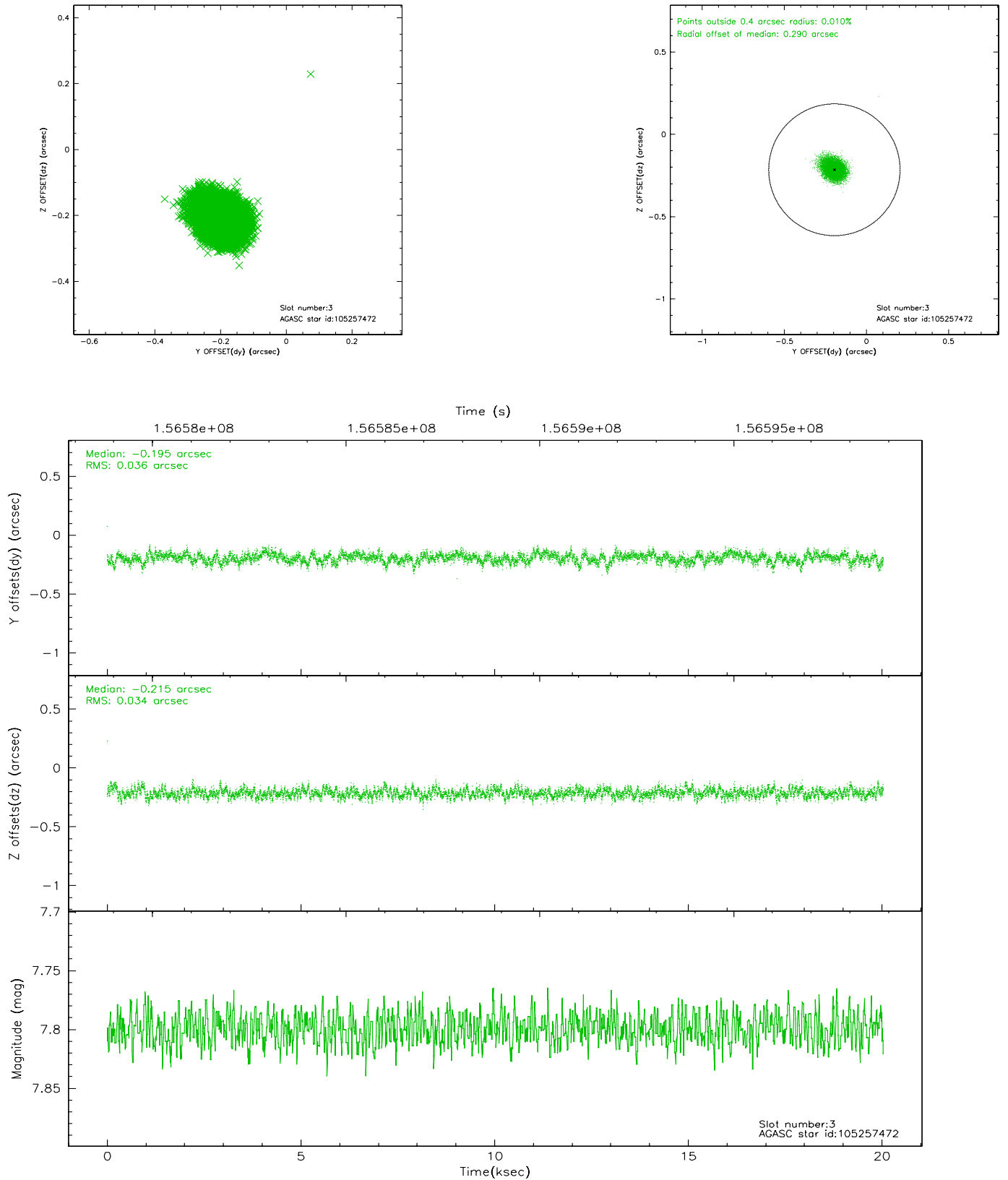
### Slot Statistics

slot	status	id	mag	n_pts	med_dy	med_dz	dr1	dr2	ra	dec	mean_y	mean_z
0	FID	ACIS-S-2	7.12	4887	-0.022	0.025	0.007	0.011	0.000000	0.000000	-755.18	-1727.90
1	FID	ACIS-S-4	7.21	4888	-0.048	0.004	0.005	0.009	0.000000	0.000000	2157.97	180.39
2	FID	ACIS-S-5	7.24	4888	0.039	-0.020	0.006	0.011	0.000000	0.000000	-1807.73	174.22
3	GUIDE	105257472	7.80	9776	-0.195	-0.215	0.052	0.086	125.374512	12.813339	1740.05	888.96
4	GUIDE	105260624	9.09	9771	-0.074	-0.061	0.070	0.113	125.278620	12.775843	1488.53	1150.24
5	GUIDE	105262824	8.91	9769	-0.010	0.033	0.072	0.118	125.790886	12.186918	204.11	-1316.83
6	GUIDE	105263080	9.45	9770	0.214	0.060	0.087	0.146	125.473433	11.801195	-1503.66	-806.05
7	GUIDE	105259656	9.66	9770	0.059	0.183	0.109	0.176	125.983342	12.035466	-44.54	-2150.25

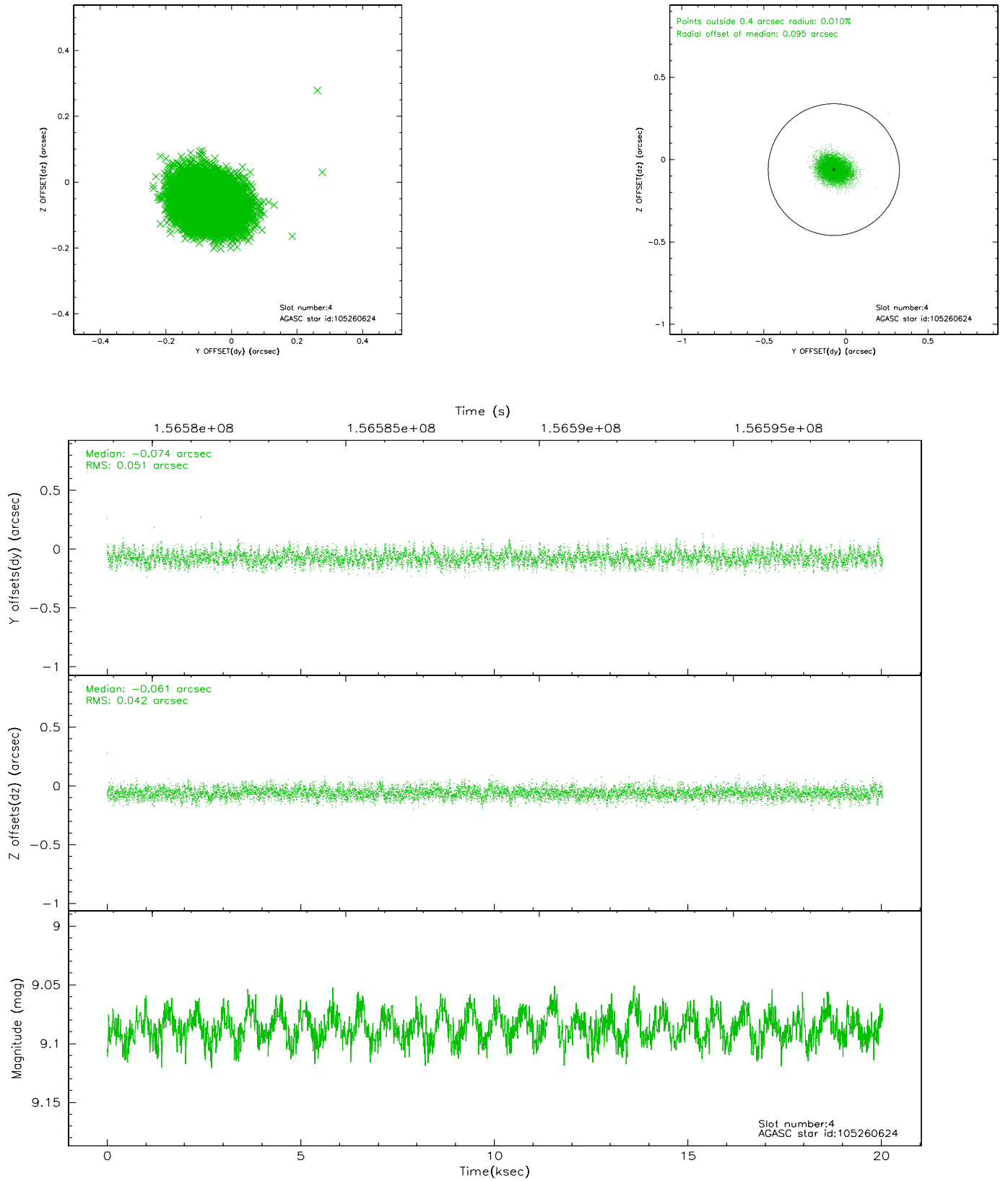


## 2.4 Star Slots

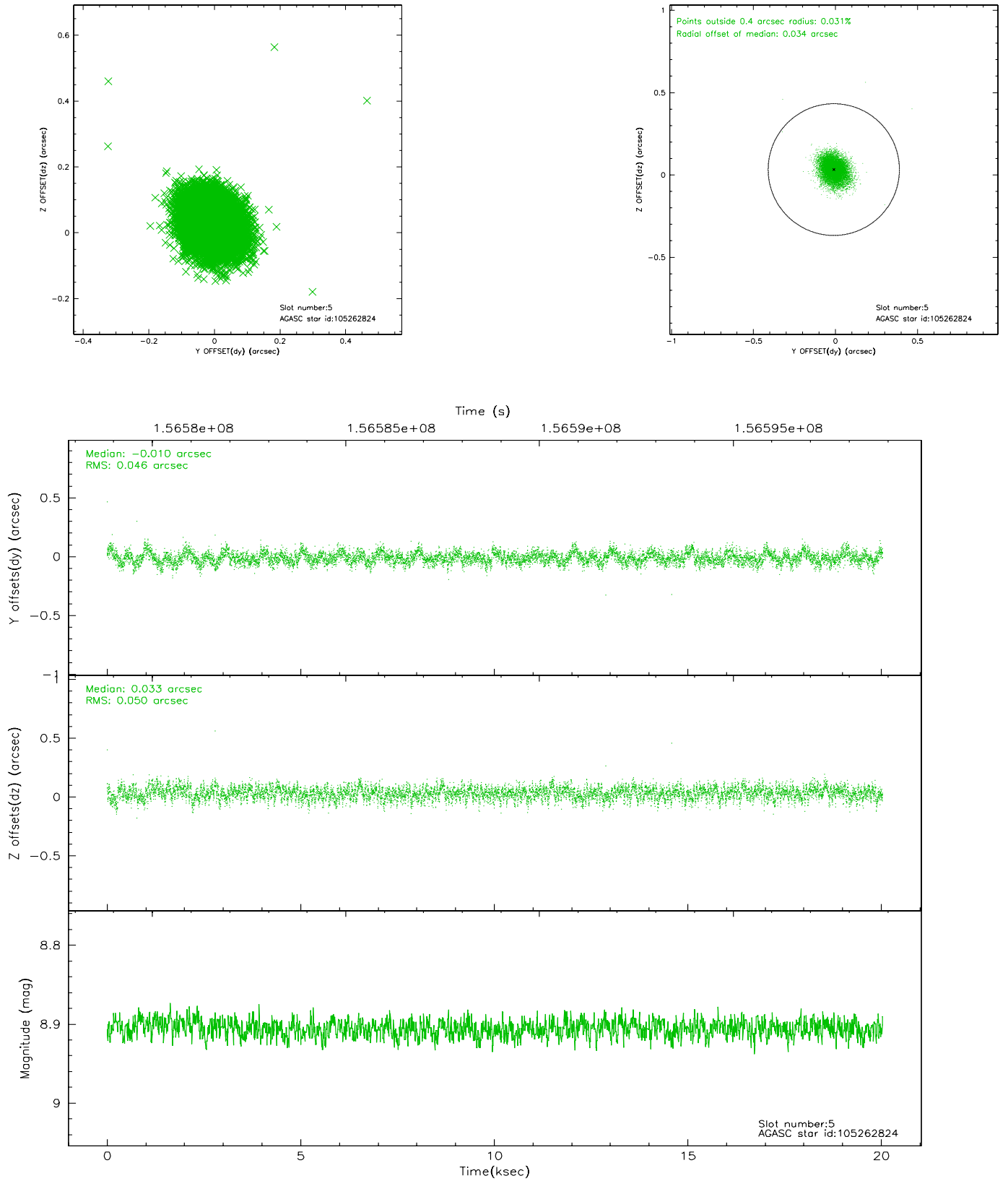
### 2.4.1 Slot 3



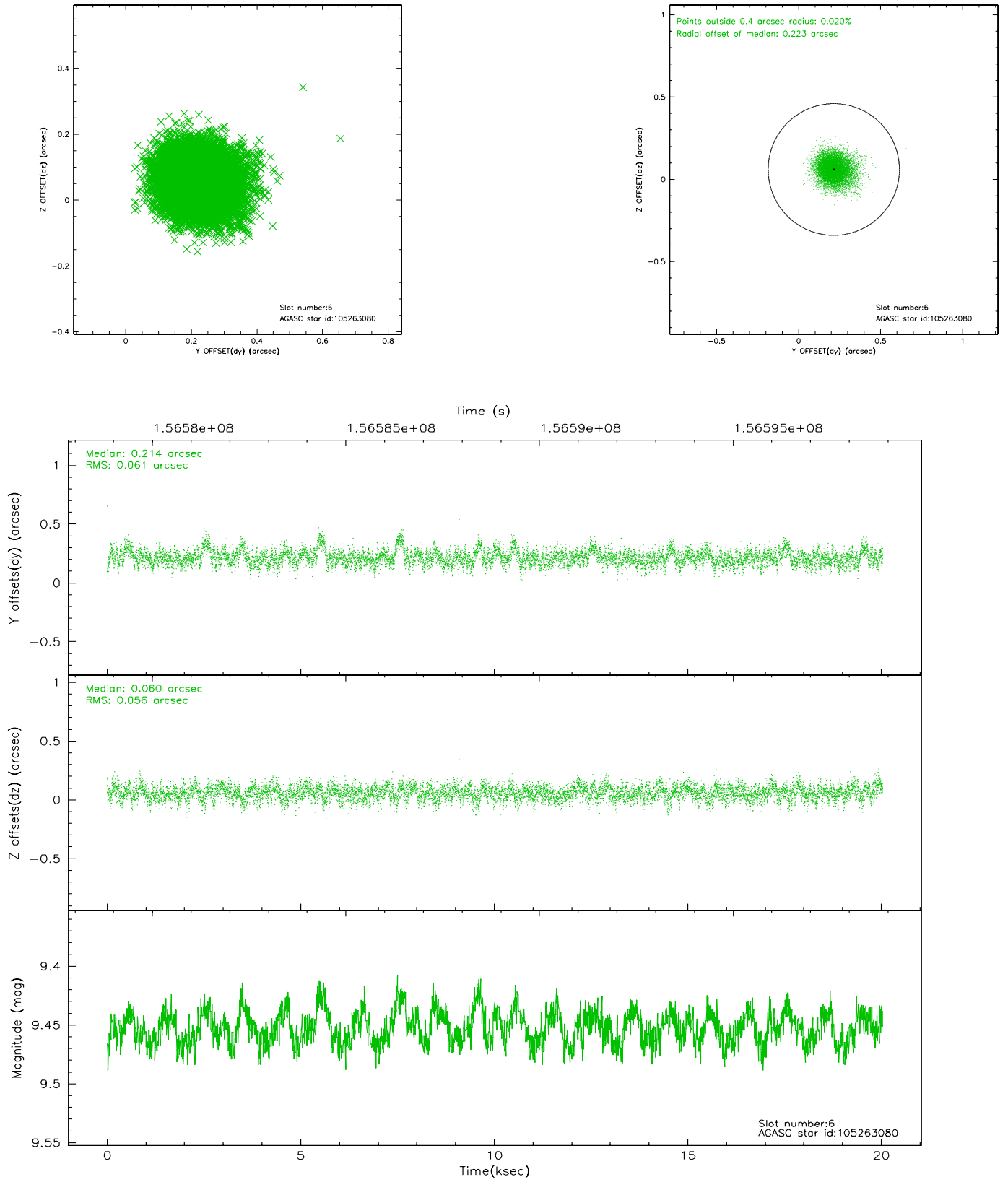
## 2.4.2 Slot 4



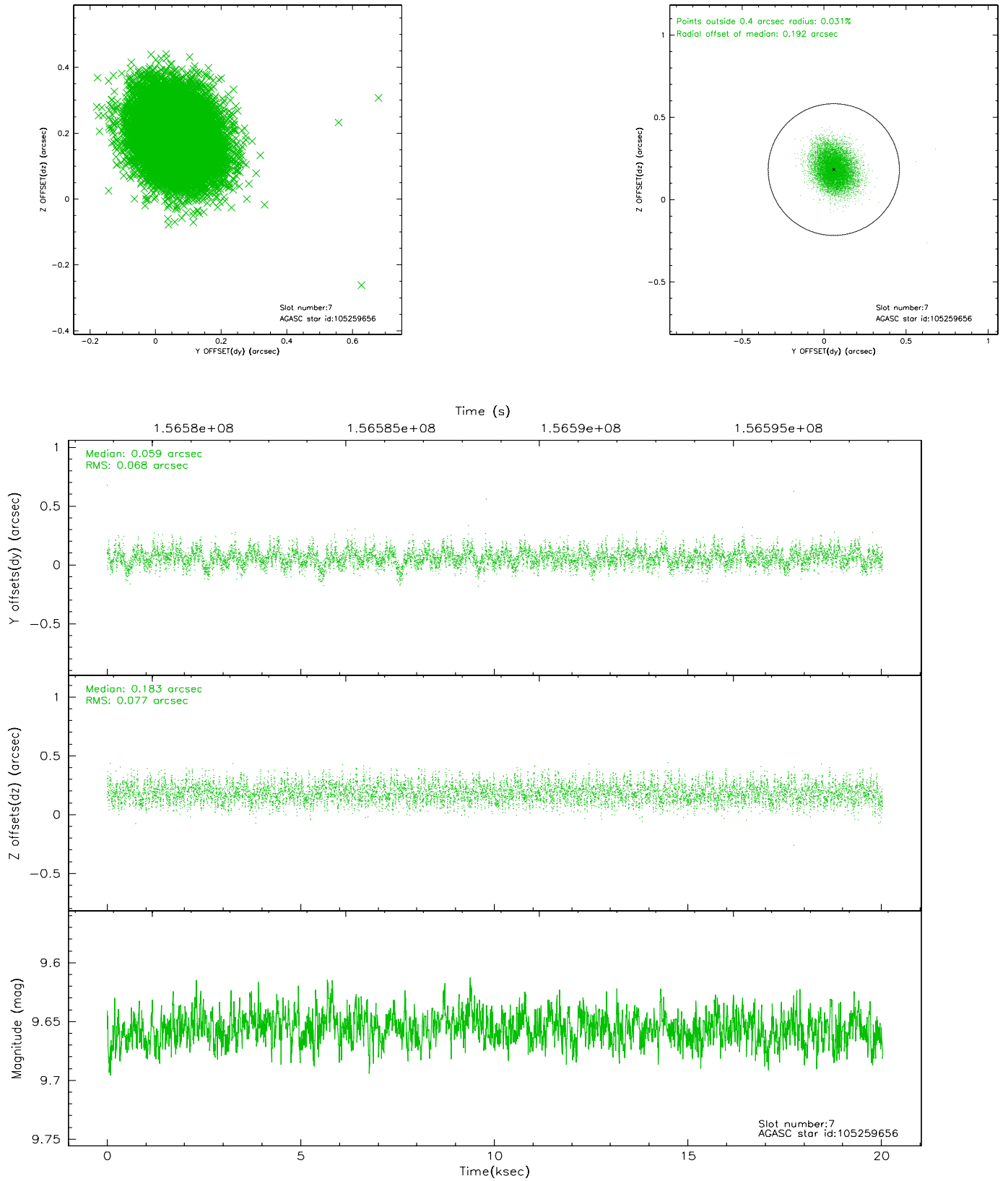
### 2.4.3 Slot 5



## 2.4.4 Slot 6

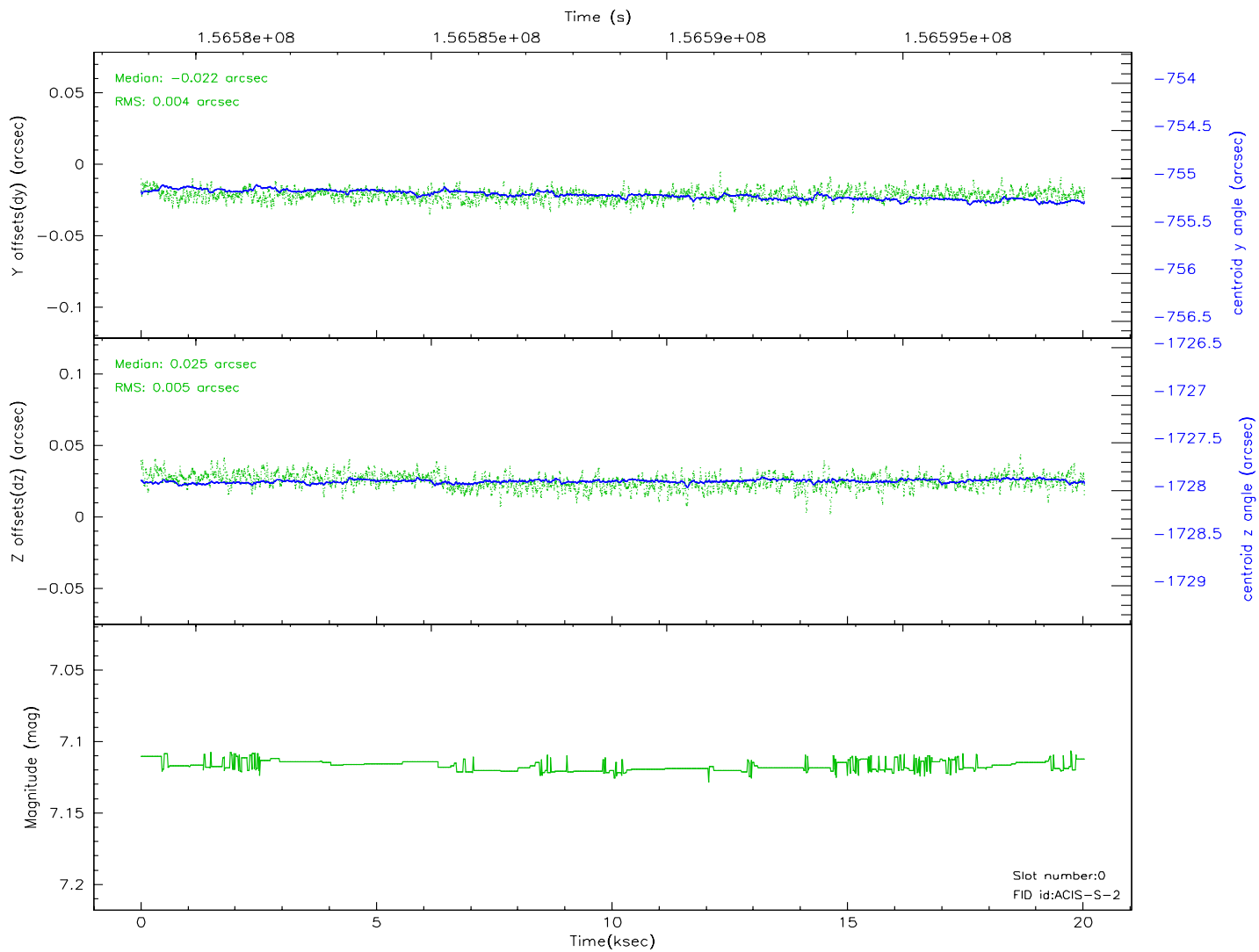
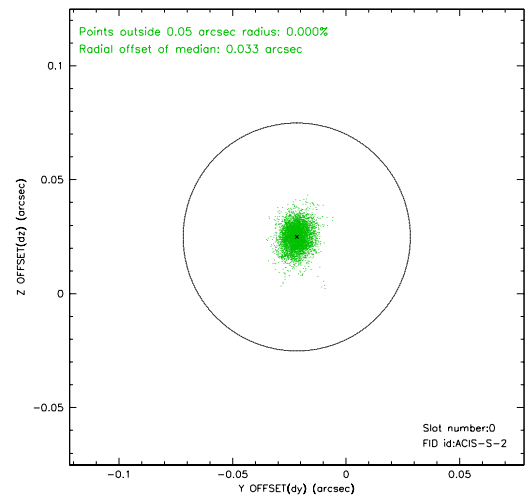
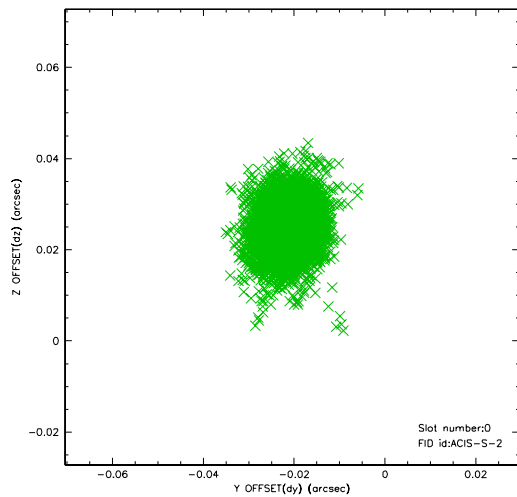


## 2.4.5 Slot 7

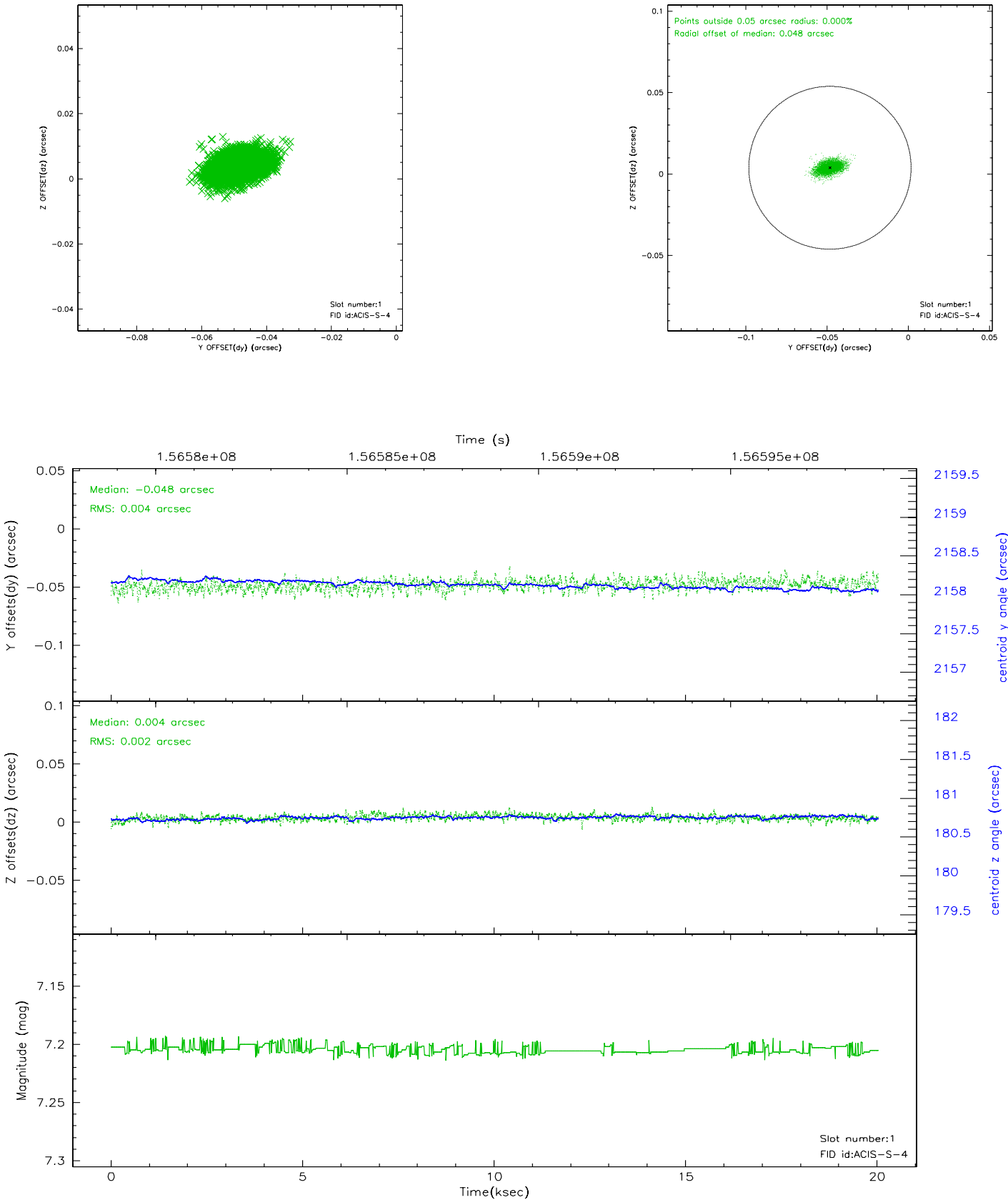


## 2.5 FID Slots

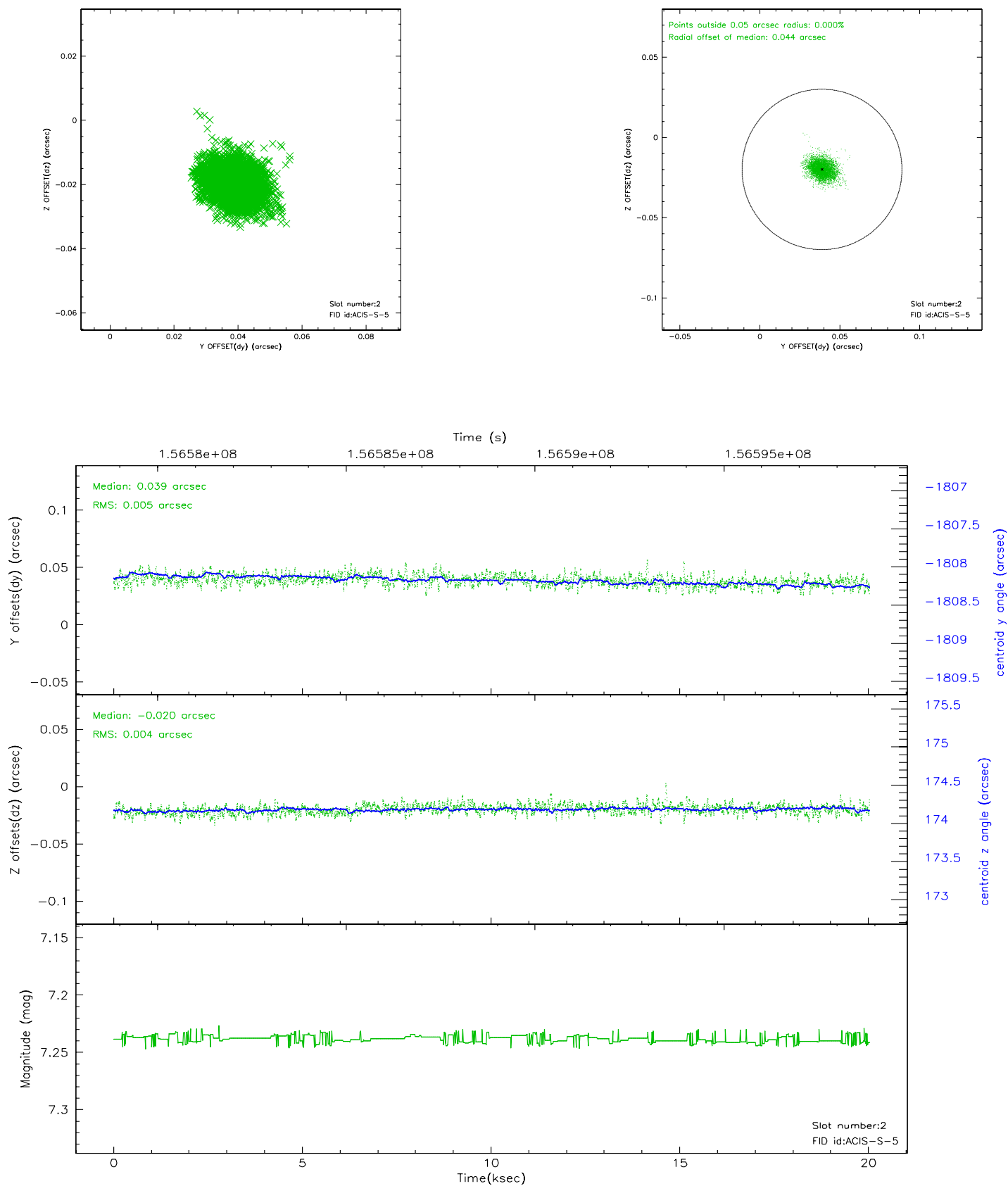
### 2.5.1 Slot 0



2.5.2 Slot 1

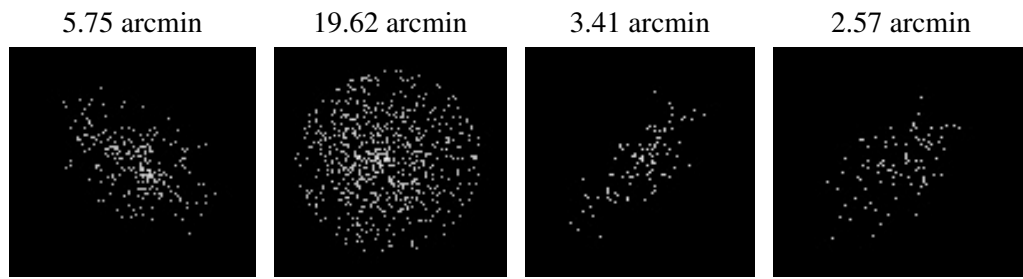


### 2.5.3 Slot 2





### 3 Point Sources



## A Summary

### A.1 Status

V&V Scientist	Jen Lauer
V&V Date (YYYY-MM-DD)	2006.10.16
V&V Edition	1
V&V Disposition and Status	OK
V&V Charge Time	20.029

### A.2 Comments