

V&V Reference Report

L2 ASCDS Version : 8.4.5

Observation 3541 - L2 Version 3
Chandra X-Ray Center

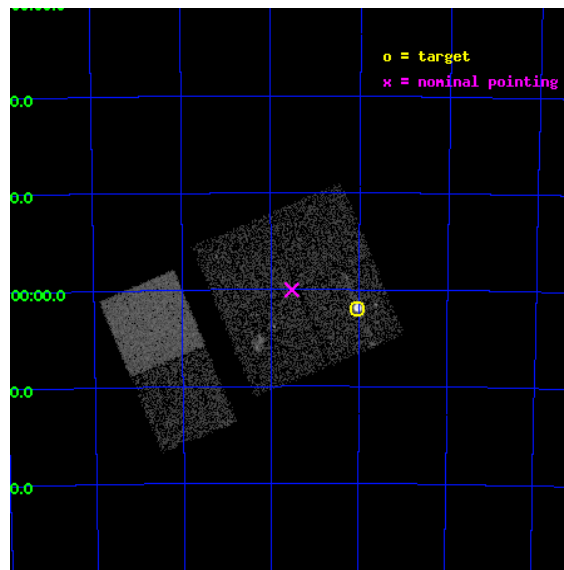
L2 Processing Date : Oct 22 2012

Contents

1	Front	2
2	OBI	3
2.1	OBI	3
2.1.1	Images	3
2.1.2	Bias	3
2.1.3	Parameters	4
2.1.4	Events	4
2.2	Compared Parameters	5
2.3	Aspect	6
2.4	Star Slots	9
2.4.1	Slot 3	9
2.4.2	Slot 4	10
2.4.3	Slot 5	11
2.4.4	Slot 6	12
2.4.5	Slot 7	13
2.5	FID Slots	14
2.5.1	Slot 0	14
2.5.2	Slot 1	15
2.5.3	Slot 2	16
A	Summary	17
A.1	Status	17
A.2	Comments	17

1 Front

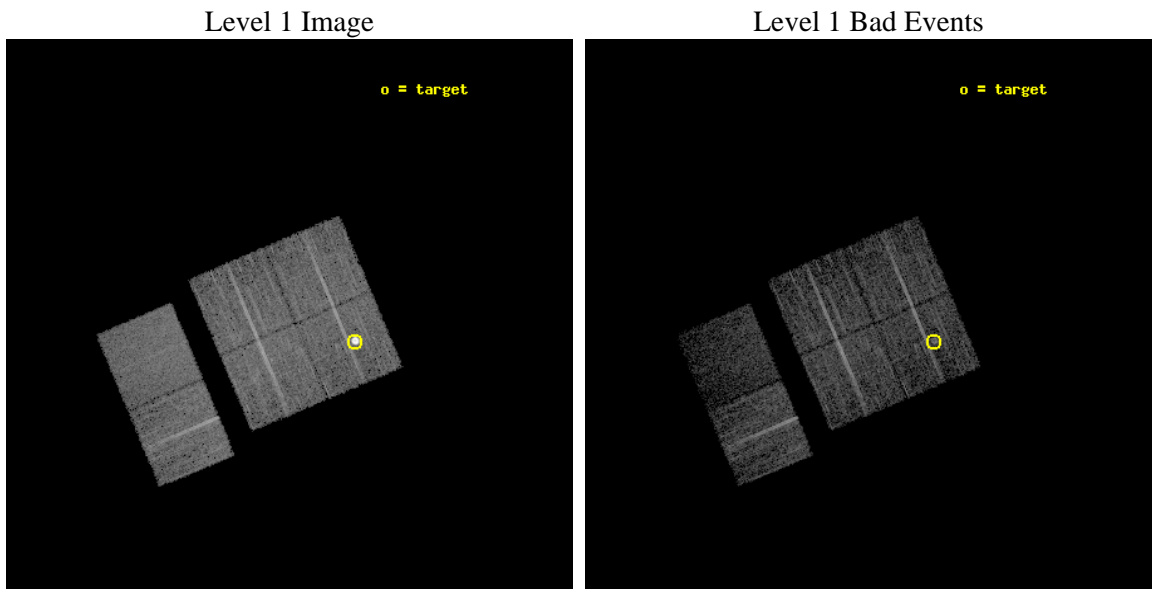
seq_num	590296	Sequence number
obs_id	3541	Observation id
title	AO4A ACIS-I CALIBRATION OBSERVATIONS OF E0102-72	Proposal title
observer	Dr. CXC Calibration	Principal investigator
object	E0102-72[I0,-120,4.7,-5.68,0]	Source name
dtcycle	0	
cycle	P	events from which exps? Prim/Second/Both
ra_targ	16.01	Observer's specified target RA [deg]
dec_targ	-72.032028	Observer's specified target Dec [deg]
ra_nom	16.381018315815	Nominal RA [deg]
dec_nom	-72.000633338845	Nominal Dec [deg]
roll_nom	247.14361765245	Nominal Roll [deg]
revision	3	Processing version of data
ontime	7731.199971199	Sum of GTIs [s]
livetime	7633.302861994	Livetime [s]
ontime0	7731.199971199	Sum of GTIs [s]
ontime1	7731.199971199	Sum of GTIs [s]
ontime2	7727.9590009153	Sum of GTIs [s]
ontime3	7731.199971199	Sum of GTIs [s]
ontime6	7731.199971199	Sum of GTIs [s]
ontime7	7731.199971199	Sum of GTIs [s]
l2events	55838	Number of level 2 events



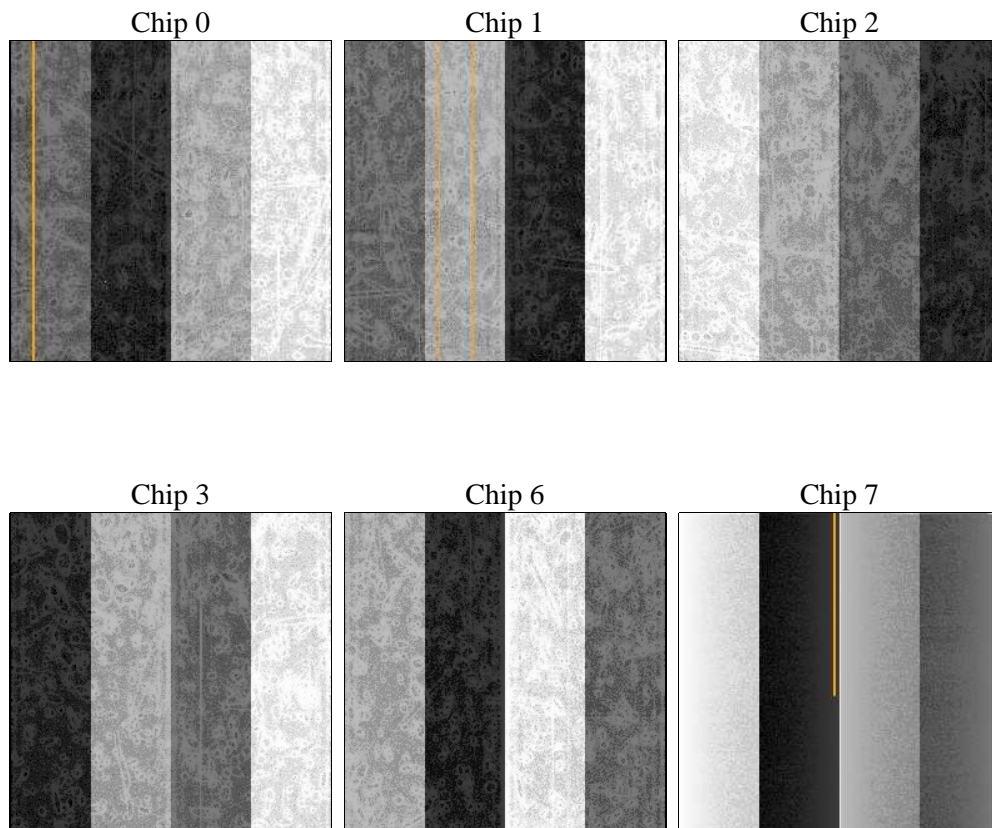
2 OBI

2.1 OBI

2.1.1 Images



2.1.2 Bias



2.1.3 Parameters

obi_num	0	Obi number	sched_exp_time	7973.000000	[s] Scheduled observation exposure time
ascdsver	8.4.5	Processing system revision	ontime	7731.199971199	Sum of GTIs [s]
caldsver	4.5.2	 	ontime0	7731.199971199	Sum of GTIs [s]
date	2012-10-22T04:04:29	Date and time of file creation	ontime1	7731.199971199	Sum of GTIs [s]
revision	3	Processing version of data	ontime2	7727.9590009153	Sum of GTIs [s]
			ontime3	7731.199971199	Sum of GTIs [s]
			ontime6	7731.199971199	Sum of GTIs [s]
			ontime7	7731.199971199	Sum of GTIs [s]
			l1events	241940	Number of level 1 events

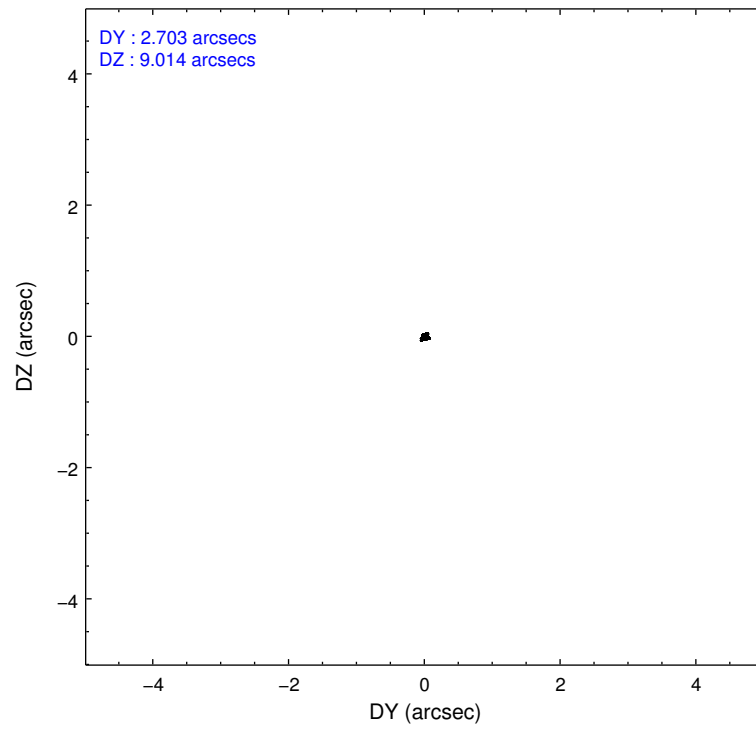
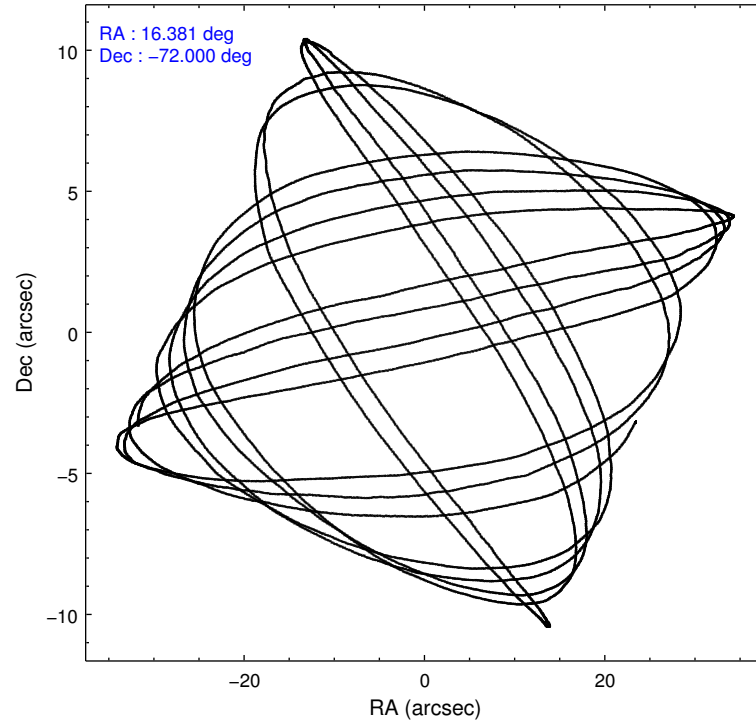
2.1.4 Events

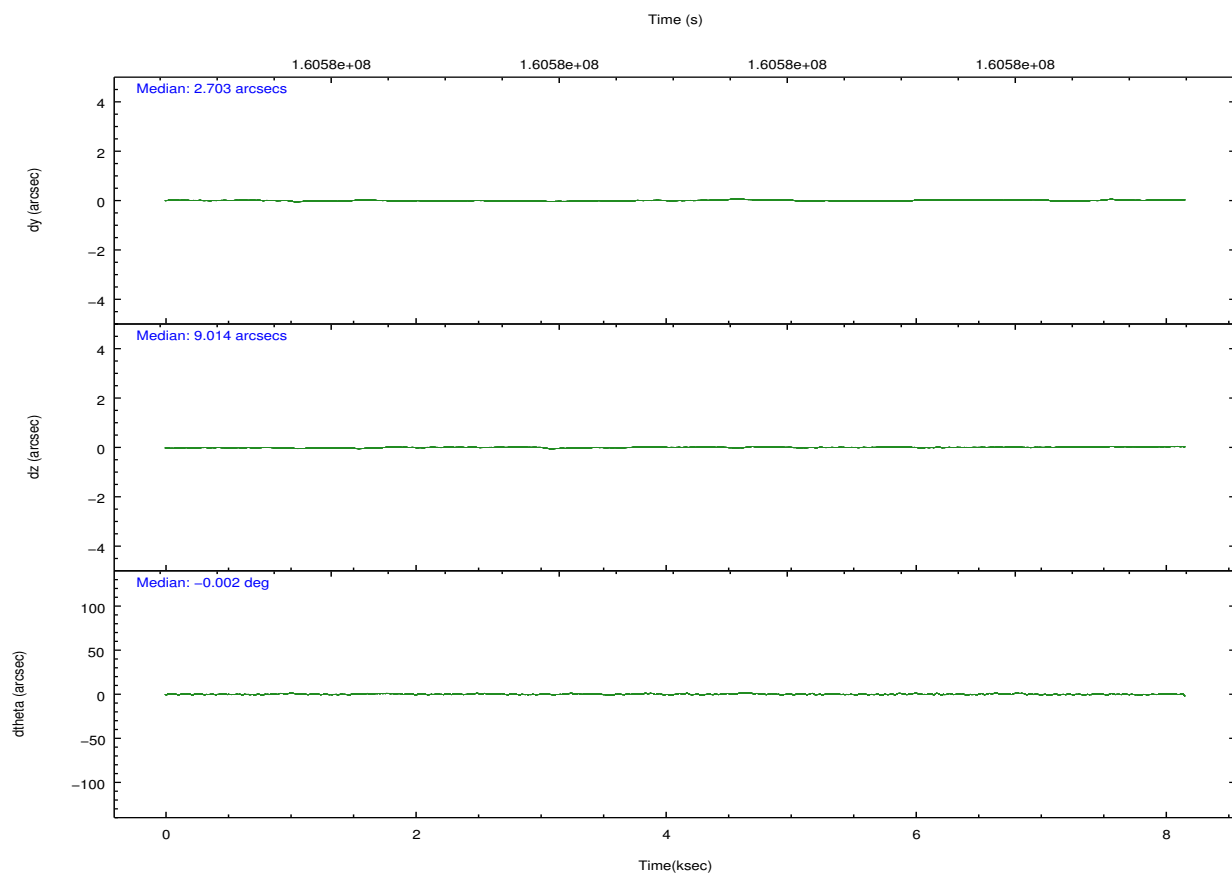
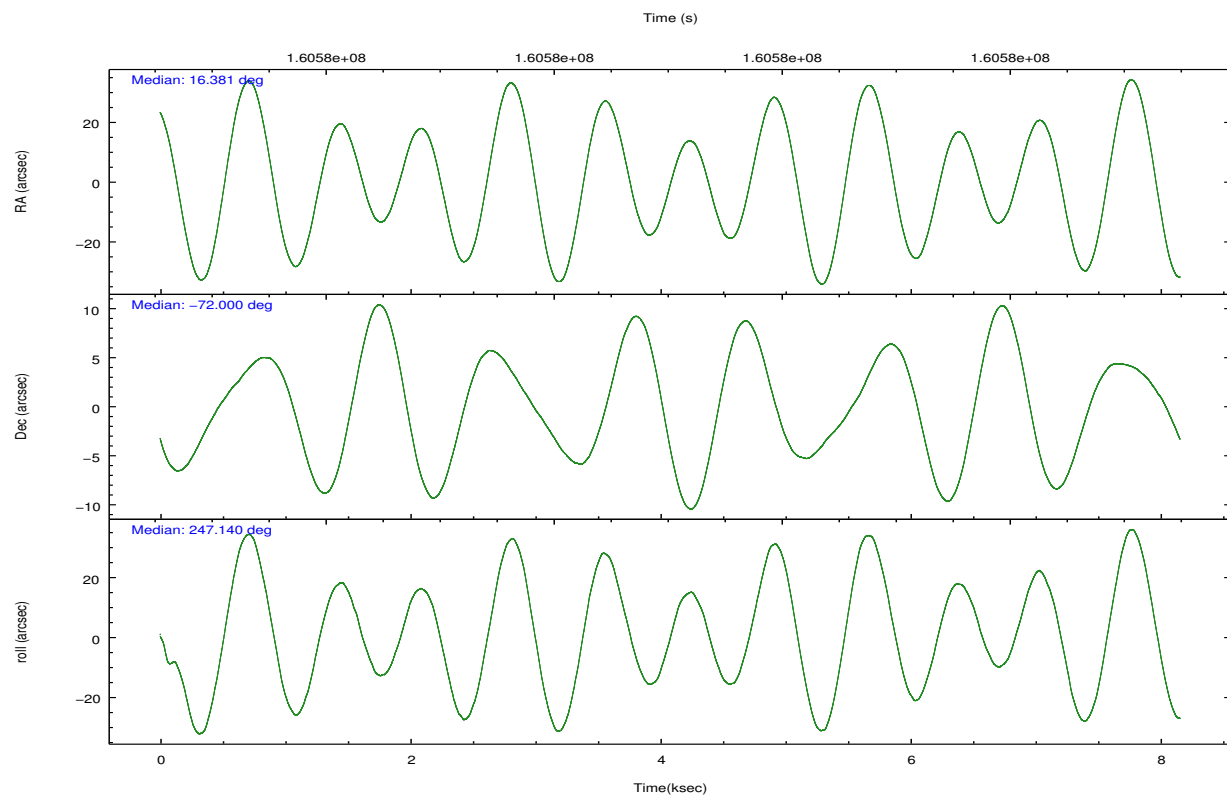
	ccd 0	ccd 1	ccd 2	ccd 3	ccd 6	ccd 7		ccd 0	ccd 1	ccd 2	ccd 3	ccd 6	ccd 7
level 1 events	57614	35072	40204	36515	37792	34743	grade 0 events	22259	1362	1898	1342	1484	1784
rejected events	30564	31186	36044	32962	33846	17457		38%	3%	4%	3%	3%	5%
rejected %	53%	88%	89%	90%	89%	50%	grade 1 events	181	20	22	27	14	37
								0%	0%	0%	0%	0%	0%
							grade 2 events	2385	808	848	739	808	3604
								4%	2%	2%	2%	2%	10%
							grade 3 events	842	462	422	416	423	1745
								1%	1%	1%	1%	1%	5%
							grade 4 events	776	471	383	412	465	1702
								1%	1%	0%	1%	1%	4%
							grade 5 events	1094	1141	1034	1219	1231	3732
								1%	3%	2%	3%	3%	10%
							grade 6 events	799	785	609	645	766	8460
								1%	2%	1%	1%	2%	24%
							grade 7 events	29278	30023	34988	31715	32601	13679
								50%	85%	87%	86%	86%	39%

2.2 Compared Parameters

Parameter	Planned	Actual	Parameter	Planned	Actual
Instrument	ACIS	ACIS	Obspar format version number	7	7
Detector	ACIS-012367	ACIS-012367	Obspar file type	PREDICTED	ACTUAL
Grating	NONE	NONE	Obspar update status	NONE	UPDATED
Data mode	VFAINT	VFAINT	Number of optional ACIS chips dropped	0	0
Observation mode	POINTING	POINTING	On-chip summing requested	N	N
[deg] Pointing RA	16.369682	16.38101831581472	Subarray requested	NONE	NONE
[deg] Pointing Dec	-71.973490	-72.00063333884492	Alternating exposures requested	N	N
[deg] Pointing Roll	246.924156	247.1436176524472	[s] Primary exposure time	0.000000	3.2
[s] Window start time (MET)	158976064.184000	158976064.184000			
[s] Window stop time (MET)	161654464.184000	161654464.184000			
[mm] SIM focus pos	-0.782348	-0.7809083437167272			
[mm] SIM defocus	0	0.001439871863259334			
[mm] SIM translation stage pos	-233.592463	-233.5874344608287			
[mm] SIM translation stage offset	0	-0.005018542100998502			
[s] Observation start time (MET)	160575120.184000	160574743.94735			
Observation start date	2003-02-02T12:10:56	2003-02-02T12:05:43			
[s] Observation end time (MET)	160583093.184000	160583227.36021			
Observation end date	2003-02-02T14:23:49	2003-02-02T14:27:07			
Read mode	TIMED	TIMED			

2.3 Aspect



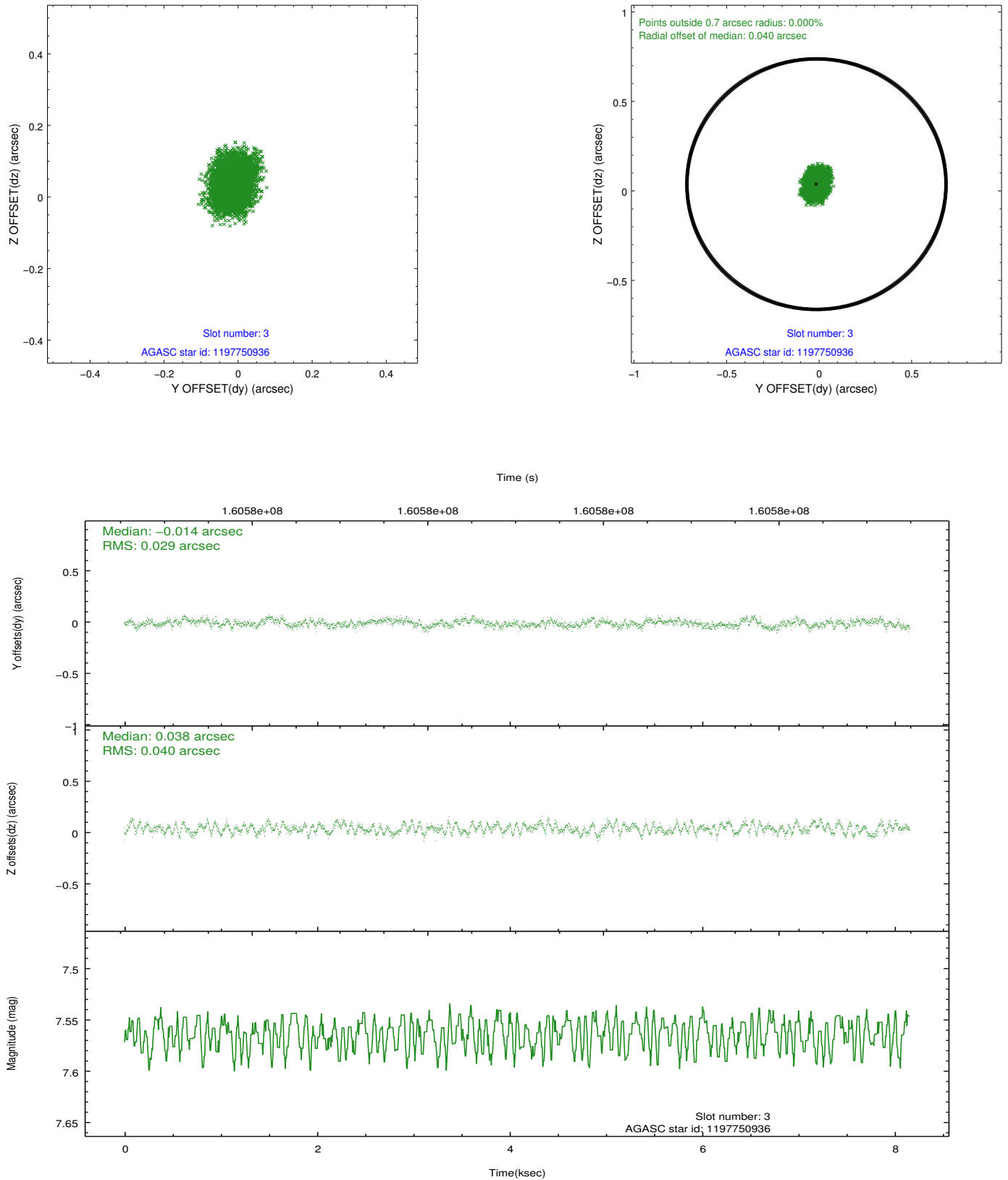


Slot Statistics

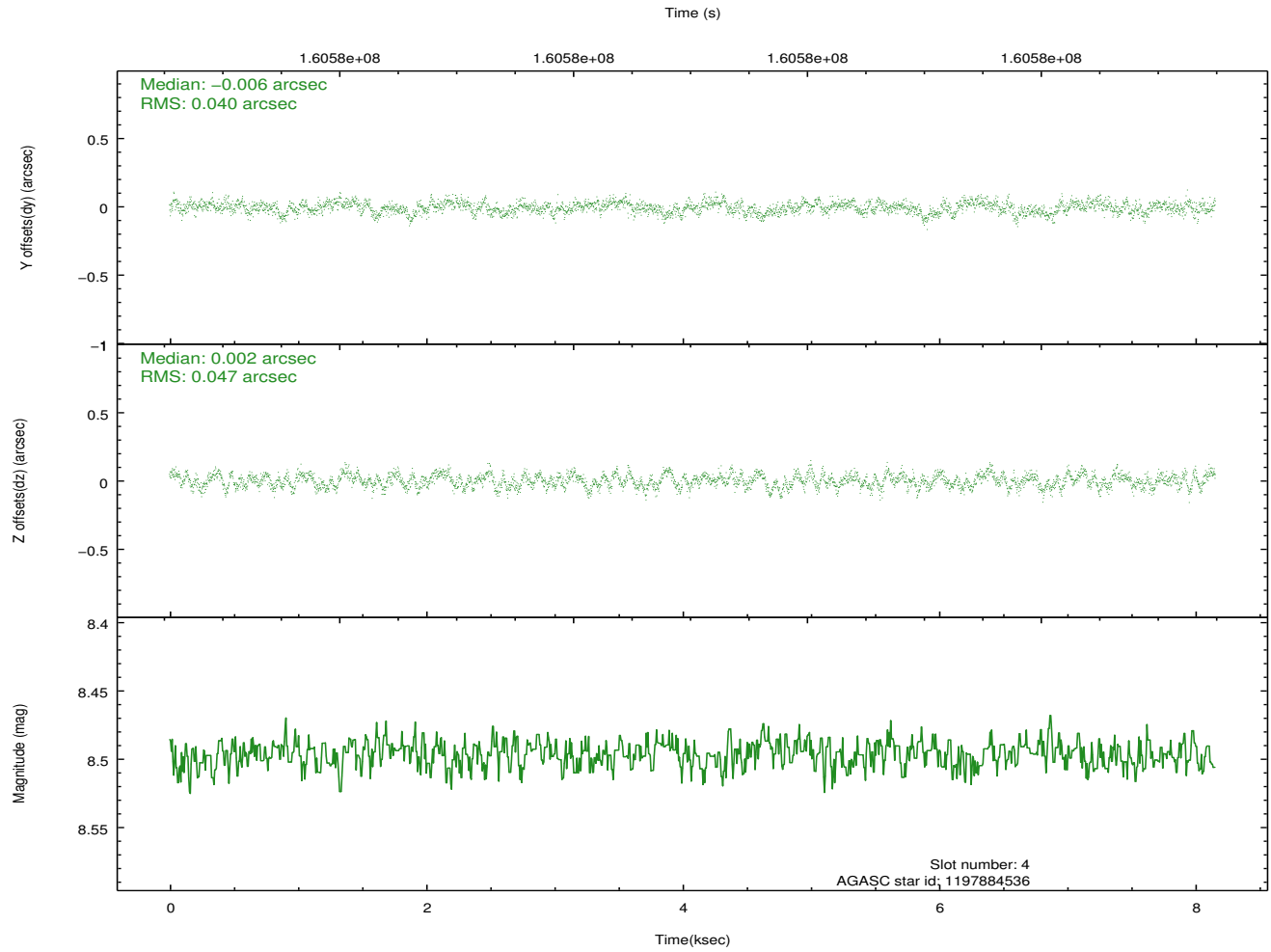
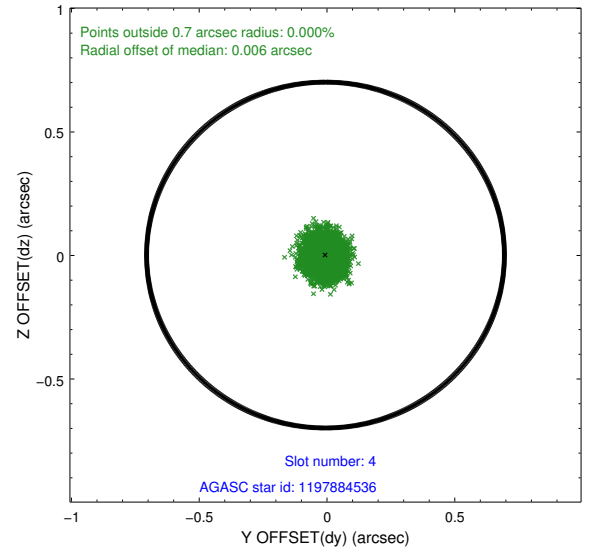
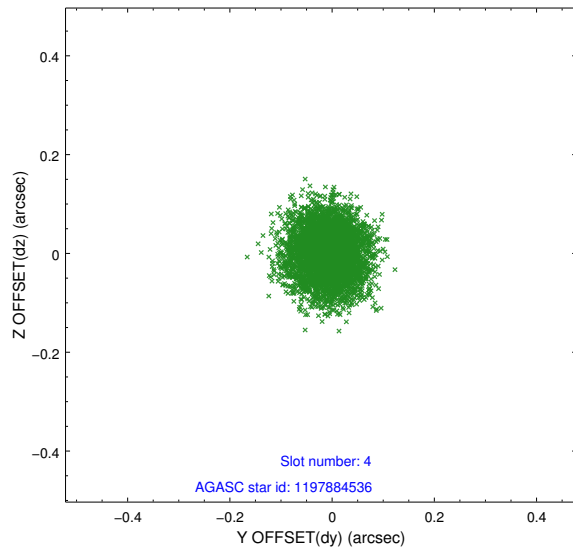
slot	status	id	mag	n_pts	med_dy	med_dz	dr1	dr2	ra	dec	mean_y	mean_z
0	FID	ACIS-I-1	7.25	1989	-0.033	0.063	0.007	0.013	0.000000	0.000000	937.07	-832.39
1	FID	ACIS-I-5	7.24	1990	-0.062	0.022	0.006	0.010	0.000000	0.000000	-1810.70	1064.70
2	FID	ACIS-I-6	7.26	1989	0.004	-0.014	0.007	0.014	0.000000	0.000000	401.89	1709.96
3	GUIDE	1197750936	7.56	3979	-0.014	0.038	0.054	0.086	15.387940	-71.549550	-956.87	-1623.30
4	GUIDE	1197884536	8.50	3979	-0.006	0.002	0.066	0.104	17.160729	-71.835289	-800.33	623.83
5	GUIDE	1198190968	10.01	3967	0.055	0.029	0.135	0.221	15.749622	-72.545972	2161.75	193.73
6	GUIDE	1197884712	8.30	3980	0.035	-0.112	0.056	0.089	16.087398	-72.252690	1047.63	109.54
7	GUIDE	1197885104	9.36	3975	-0.069	0.044	0.100	0.164	17.845067	-72.189368	97.19	1807.18

2.4 Star Slots

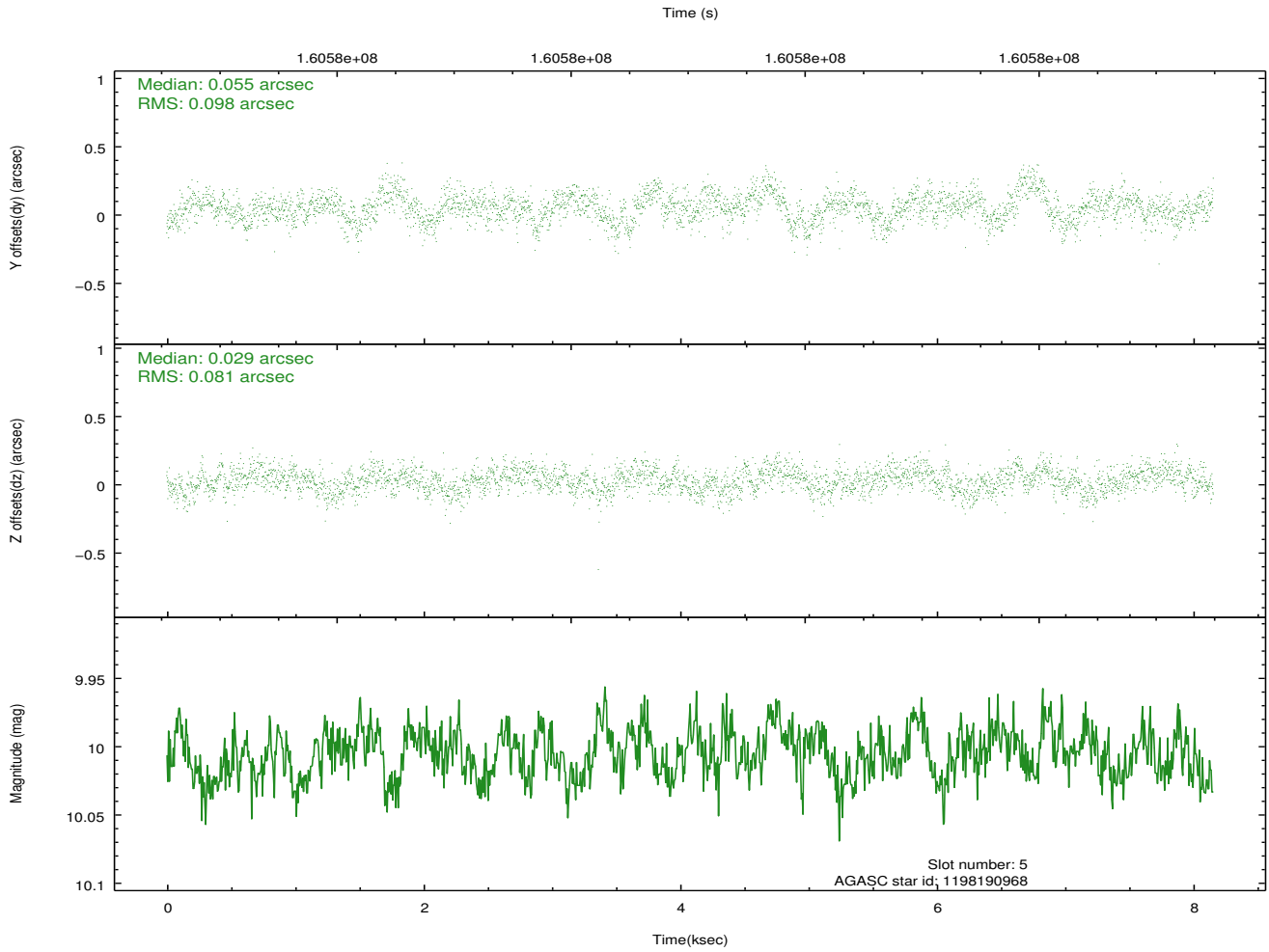
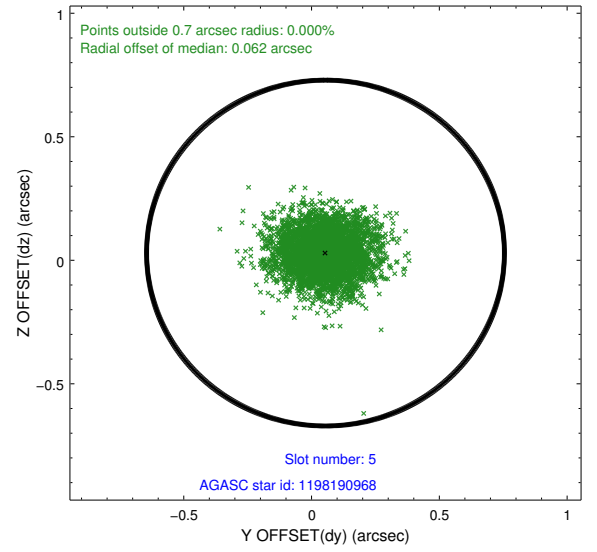
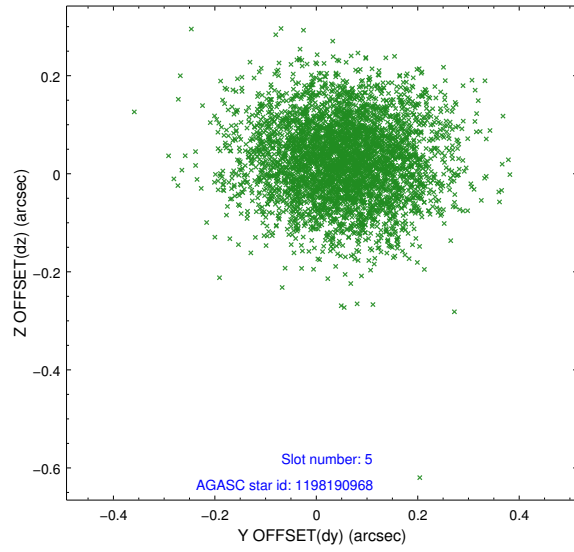
2.4.1 Slot 3



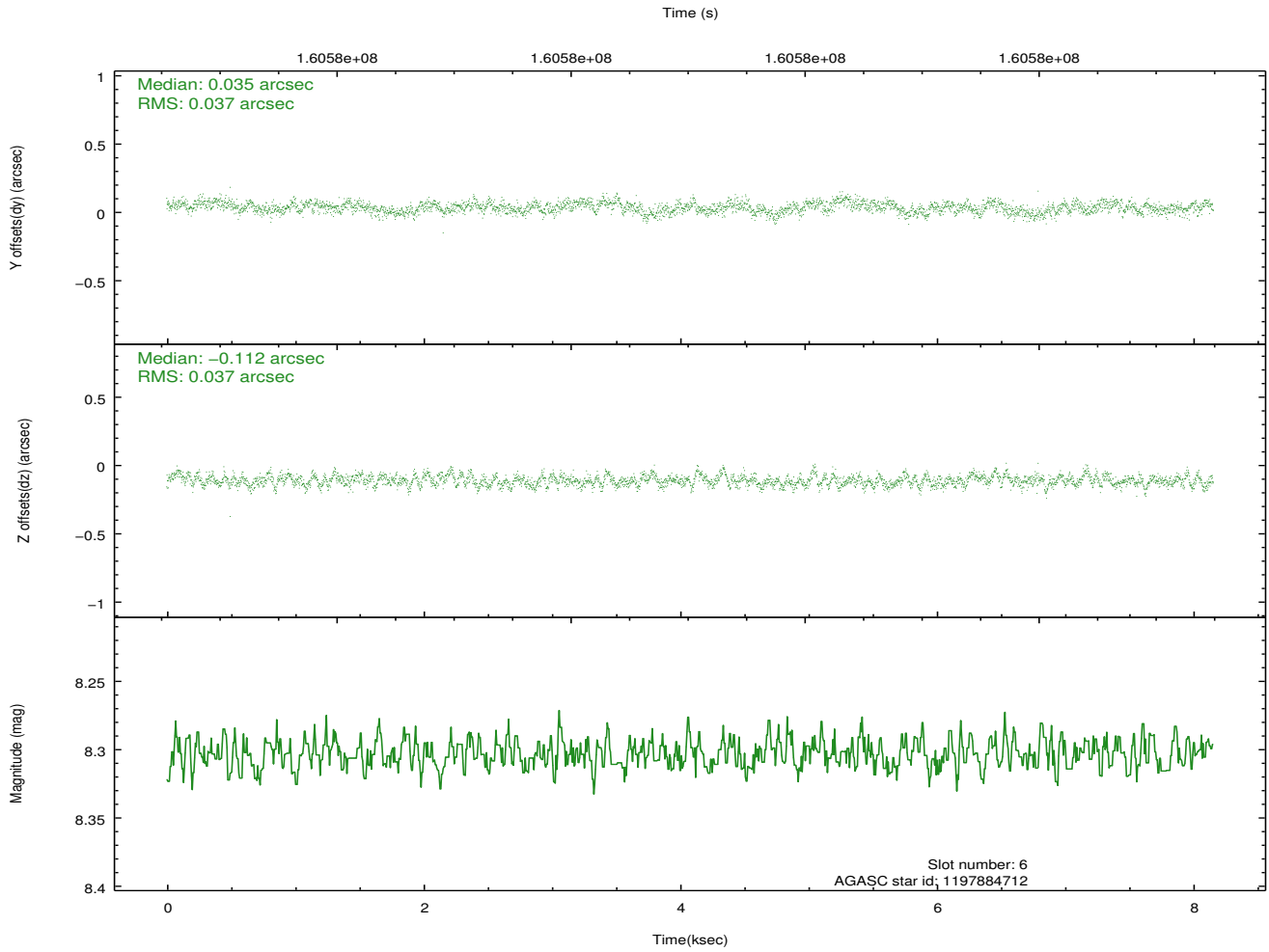
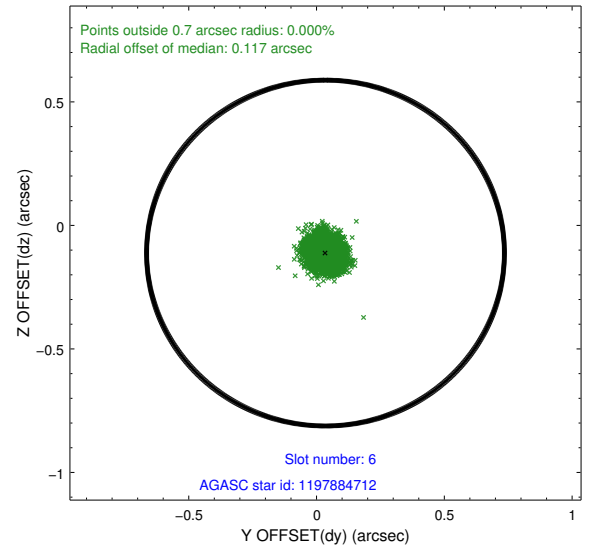
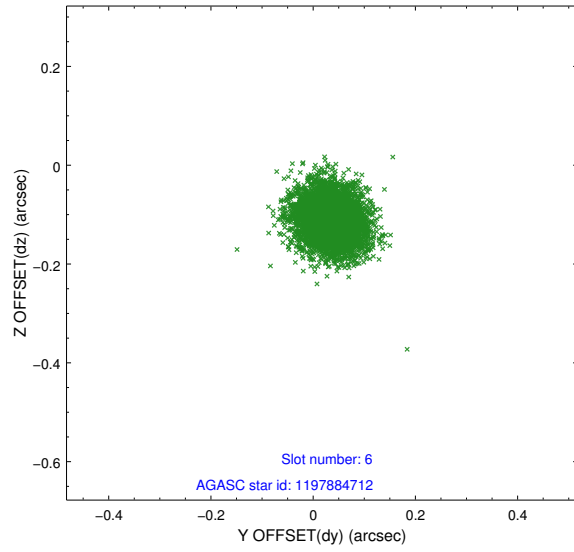
2.4.2 Slot 4



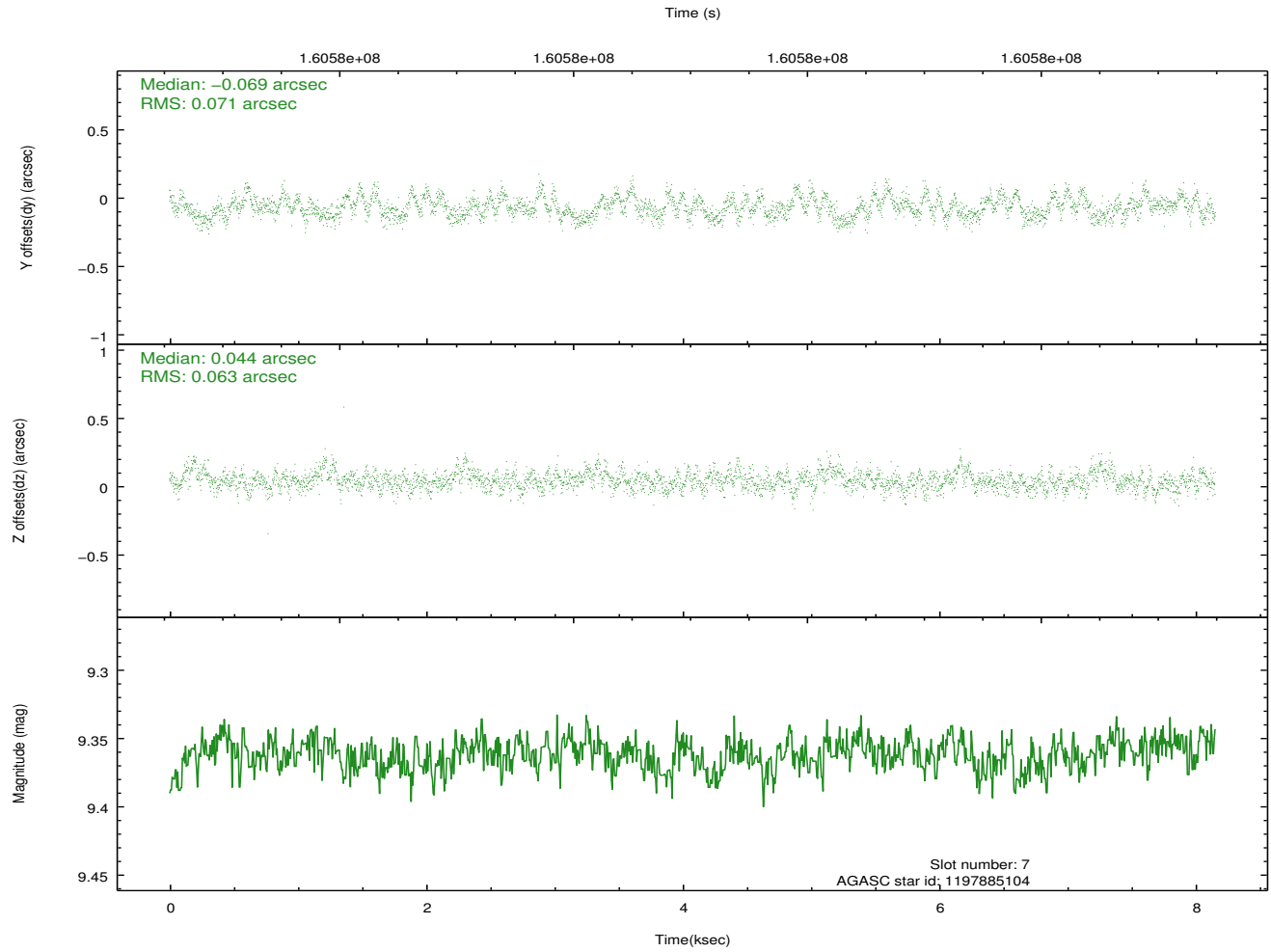
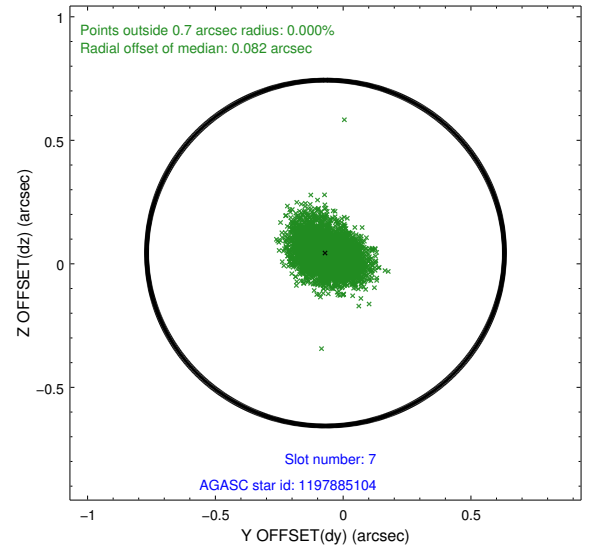
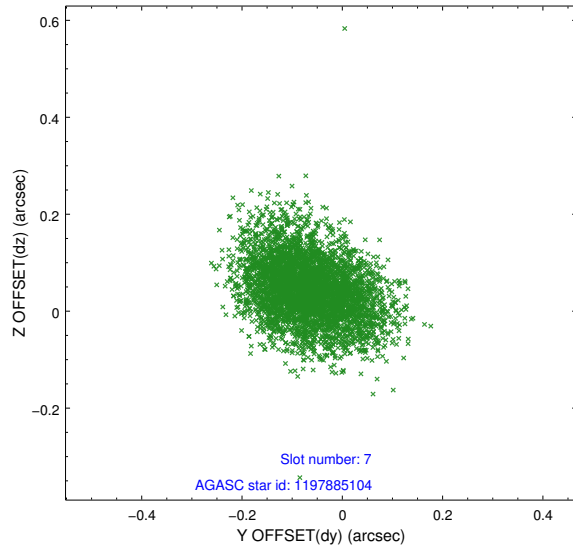
2.4.3 Slot 5



2.4.4 Slot 6

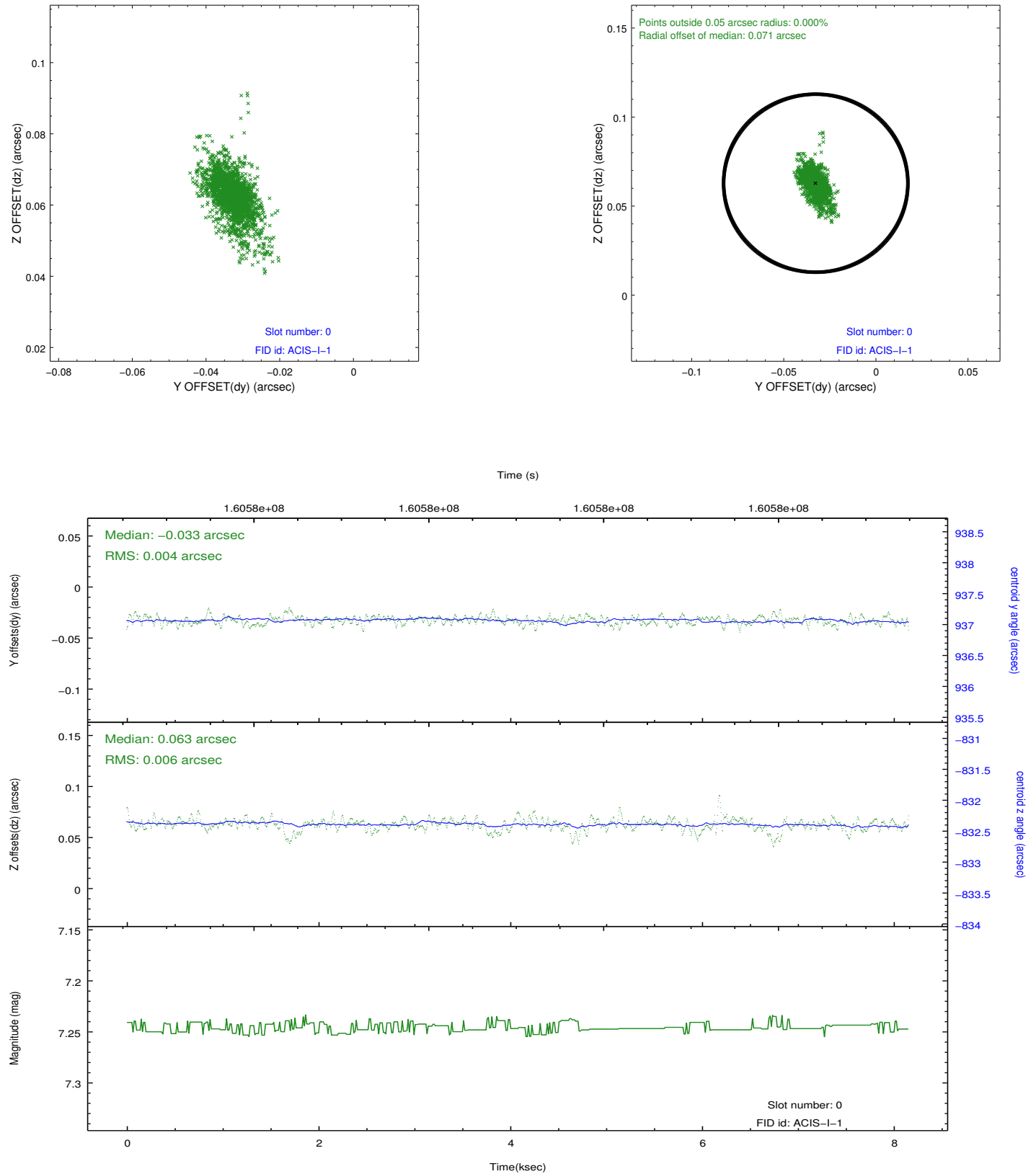


2.4.5 Slot 7

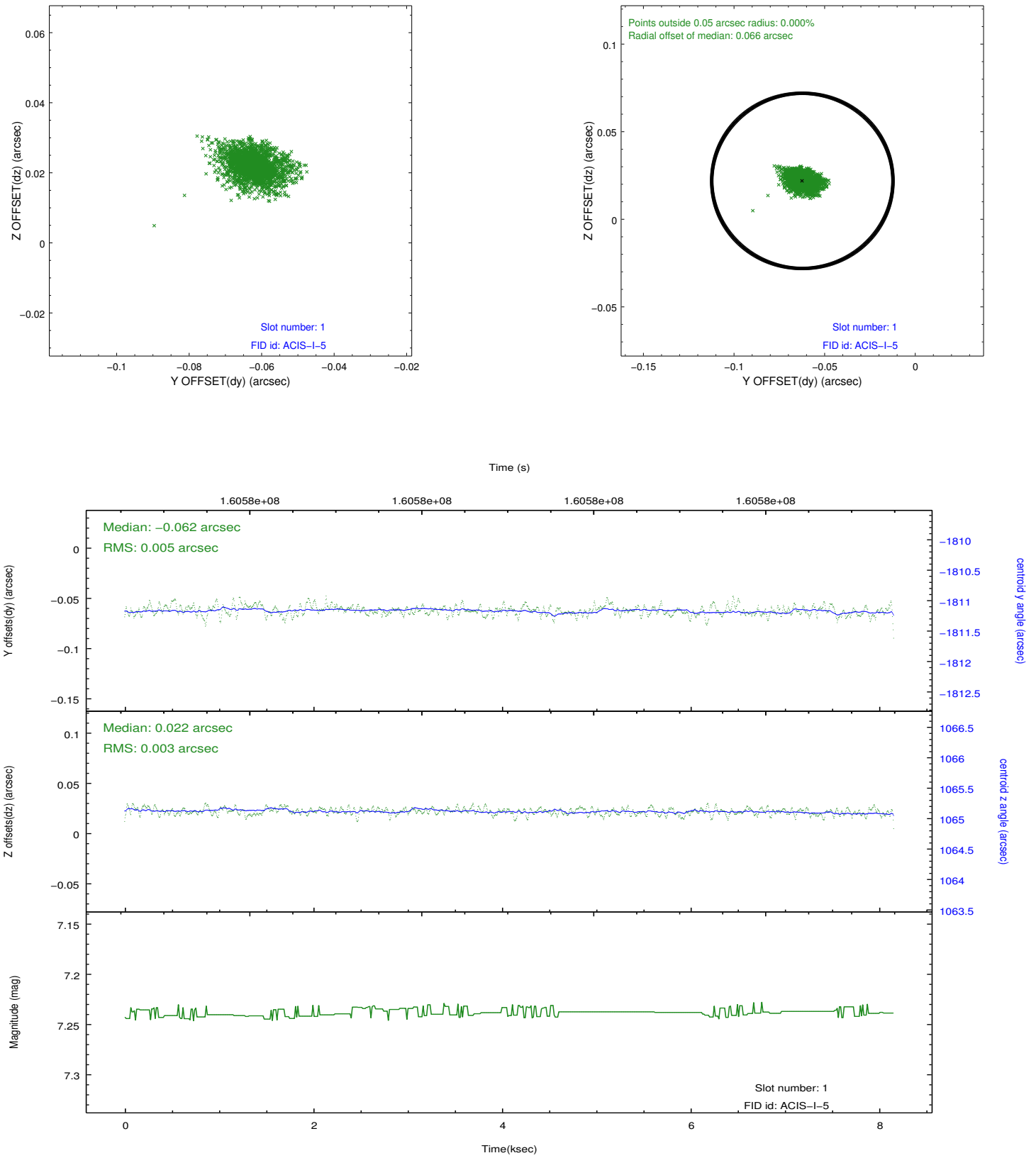


2.5 FID Slots

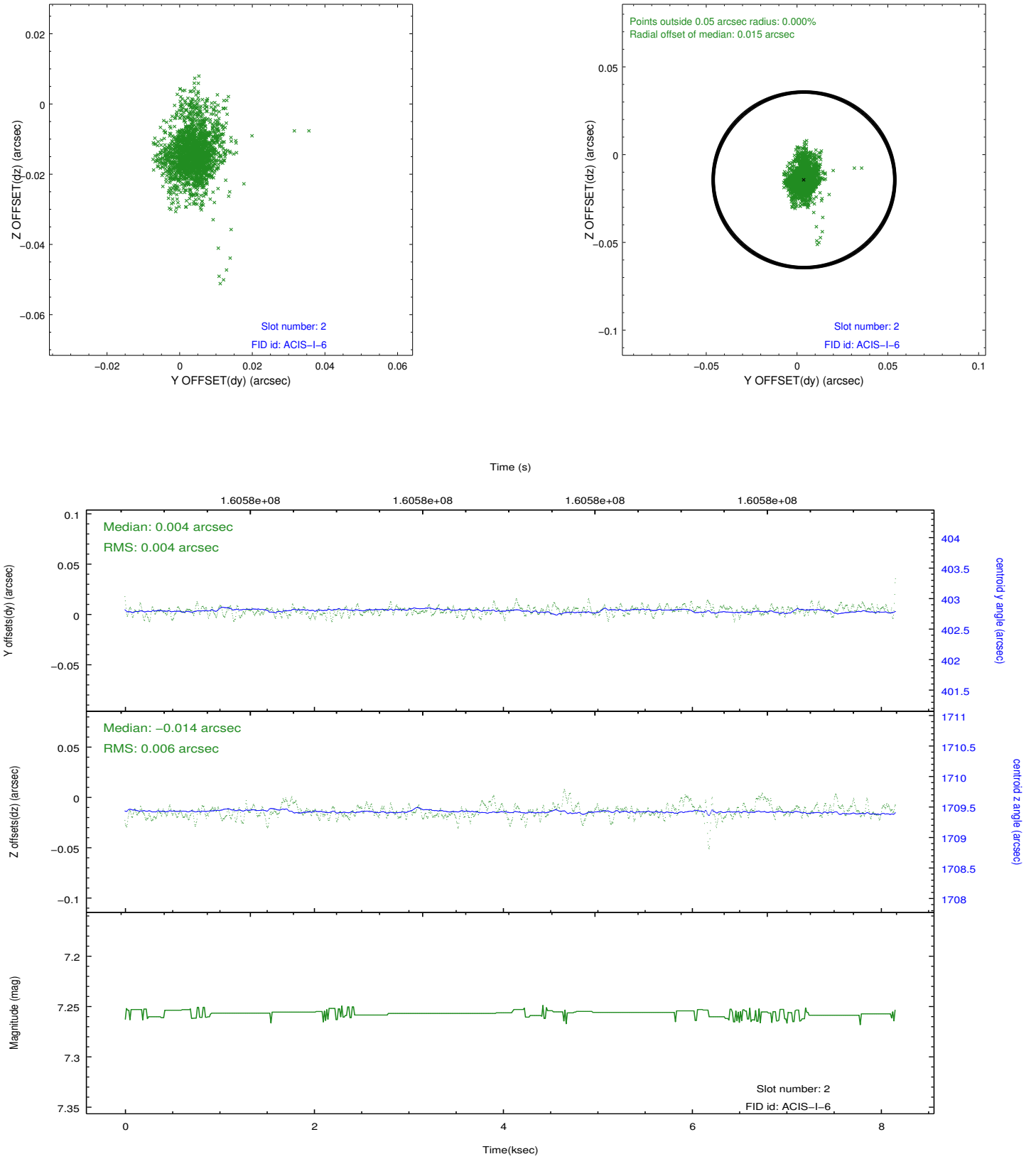
2.5.1 Slot 0



2.5.2 Slot 1



2.5.3 Slot 2



A Summary

A.1 Status

V&V Scientist	Jen Lauer
V&V Date (YYYY-MM-DD)	2012.11.05
V&V Edition	1
V&V Disposition and Status	OK
V&V Charge Time	7.734

A.2 Comments

Window constraint satisfied.