

V&V Reference Report

L2 ASCDS Version : 7.6.8.1

Observation 3391 - L2 Version 001
Chandra X-Ray Center

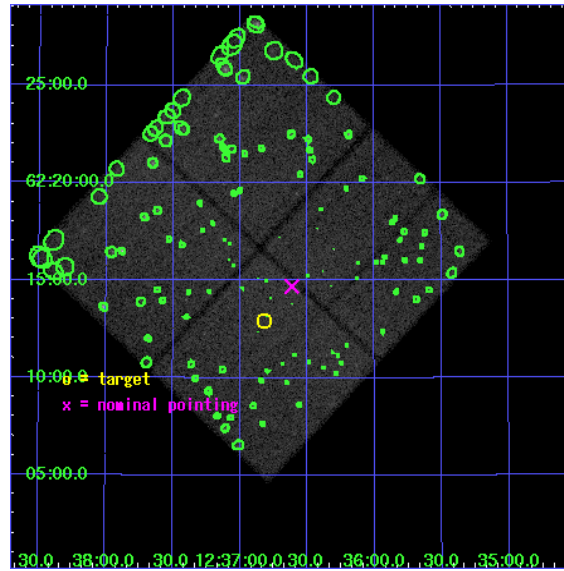
L2 Processing Date : Sep 4 2006

Contents

1	Front	2
2	OBI	3
2.1	OBI	3
2.1.1	Images	3
2.1.2	Bias	3
2.1.3	Parameters	4
2.1.4	Events	4
2.2	Compared Parameters	5
2.3	Aspect	6
2.4	Star Slots	9
2.4.1	Slot 3	9
2.4.2	Slot 4	10
2.4.3	Slot 5	11
2.4.4	Slot 6	12
2.4.5	Slot 7	13
2.5	FID Slots	14
2.5.1	Slot 0	14
2.5.2	Slot 1	15
2.5.3	Slot 2	16
3	Point Sources	17
A	Summary	18
A.1	Status	18
A.2	Comments	18

1 Front

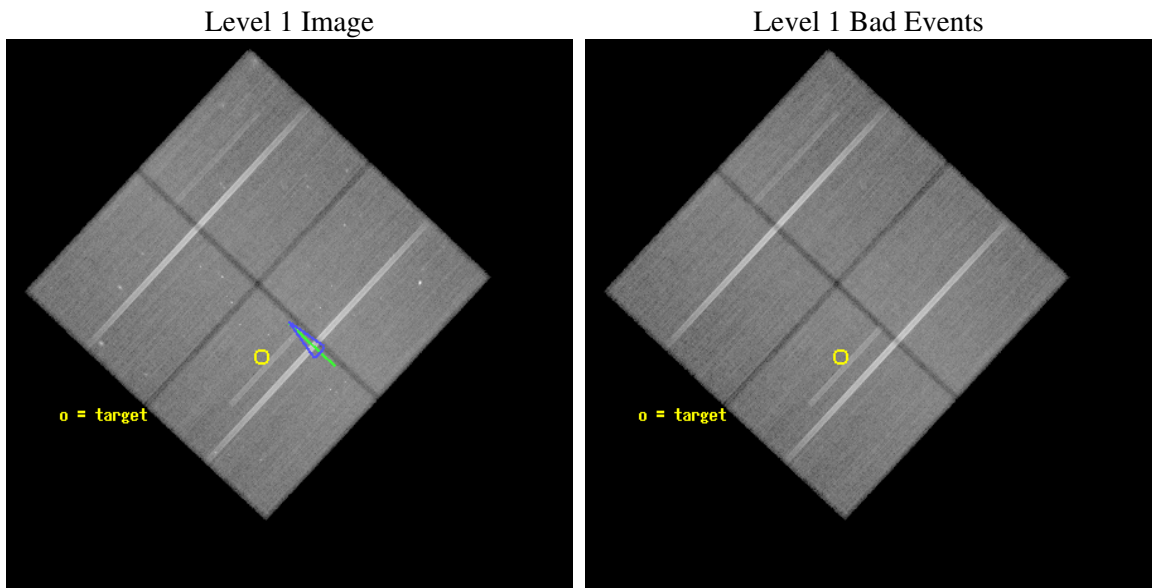
seq_num	900133
obs_id	3391
title	THE CHANDRA SURVEY OF THE HUBBLE DEEP FIELD NORTH AREA: A PUBLIC RESOURCE FOR THE PRESENT AND FUTURE OF X-RAY ASTRONOMY
observer	Prof. William Brandt
object	HDF-N
dtcycle	0
cycle	P
ra_targ	189.205833
dec_targ	62.216111
ra_nom	189.1536806872
dec_nom	62.244931907174
roll_nom	133.13133242362
revision	2
ontime	166913.05378784
livetime	164732.2118605
ontime0	166903.63084739
ontime1	166894.20804618
ontime2	166903.63093702
ontime3	166913.05378784
l2events	278302



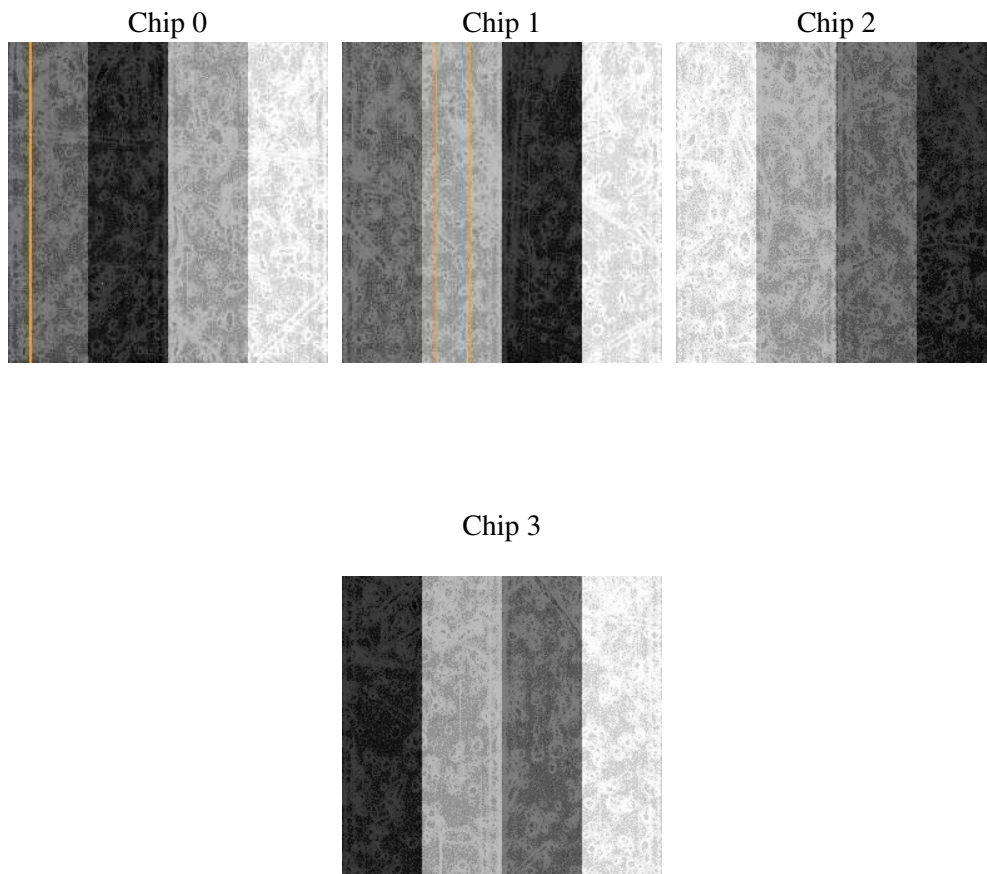
2 OBI

2.1 OBI

2.1.1 Images



2.1.2 Bias



2.1.3 Parameters

obi_num	0
ascdsver	7.6.8.1
caldbver	3.2.3
date	2006-09-04T11:15:55
revision	2

sched_exp_time	166700.000000
ontime	166919.05988513
ontime0	166909.63694468
ontime1	166900.21414347
ontime2	166909.63703431
ontime3	166919.05988513
l1events	3544005

2.1.4 Events

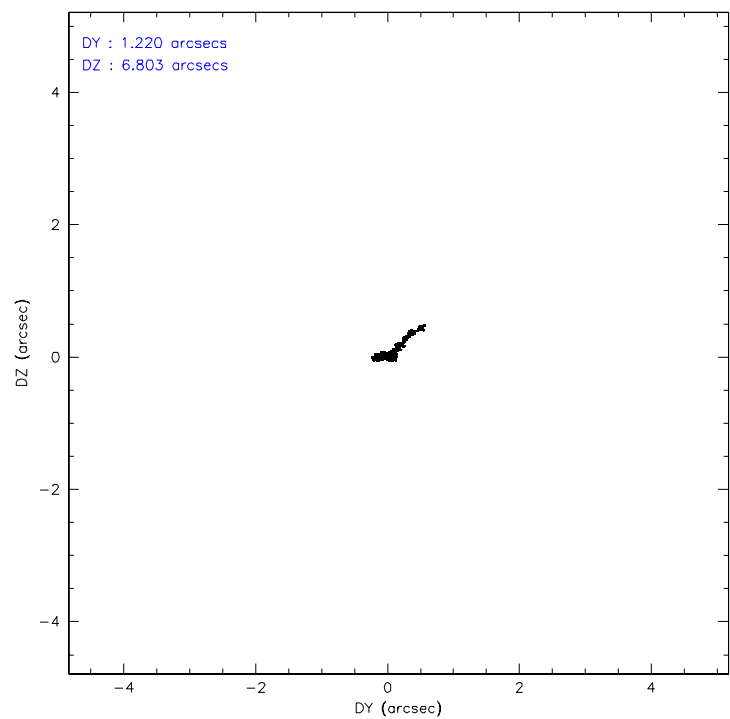
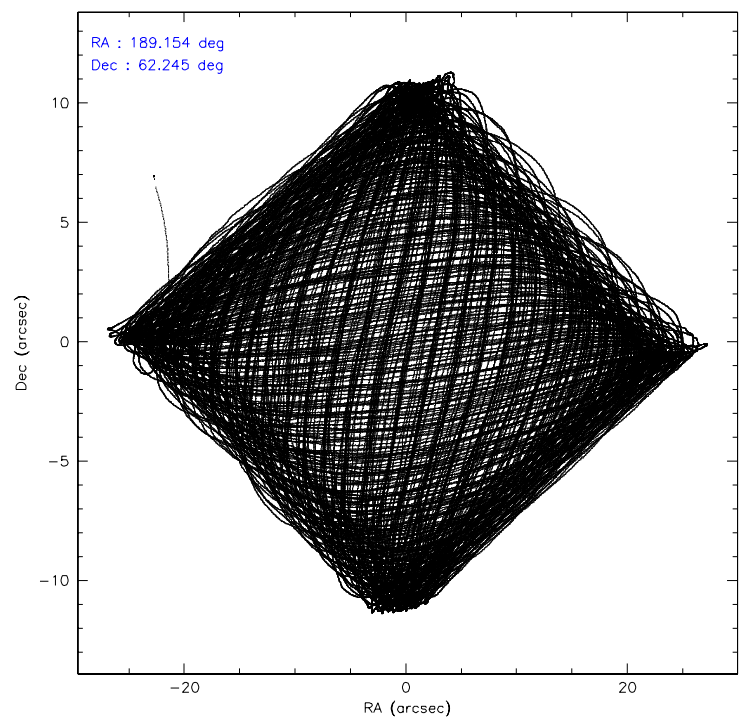
	ccd 0	ccd 1	ccd 2	ccd 3
level 1 events	845681	836644	957185	904495
rejected events	759550	745863	870164	824621
rejected %	89%	89%	90%	91%

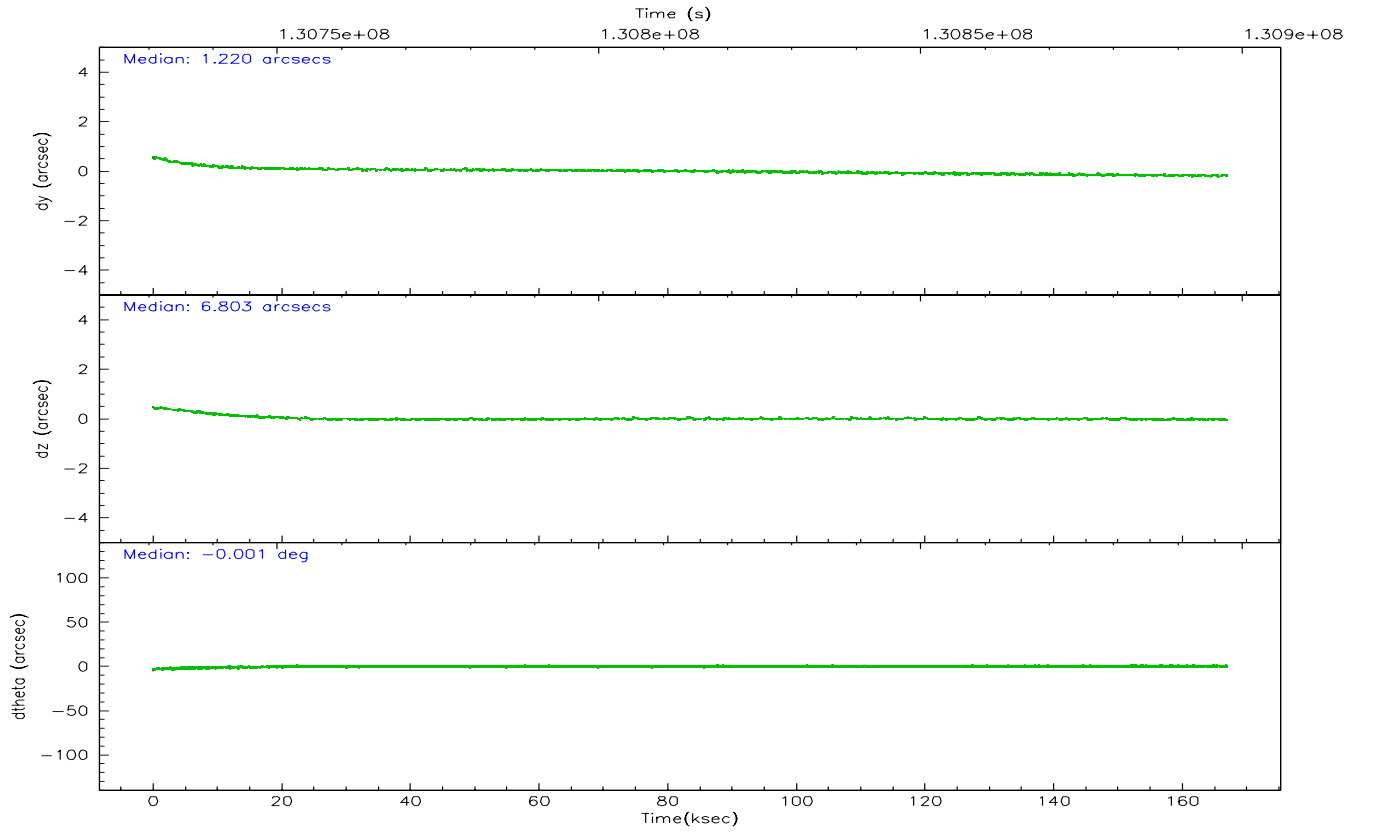
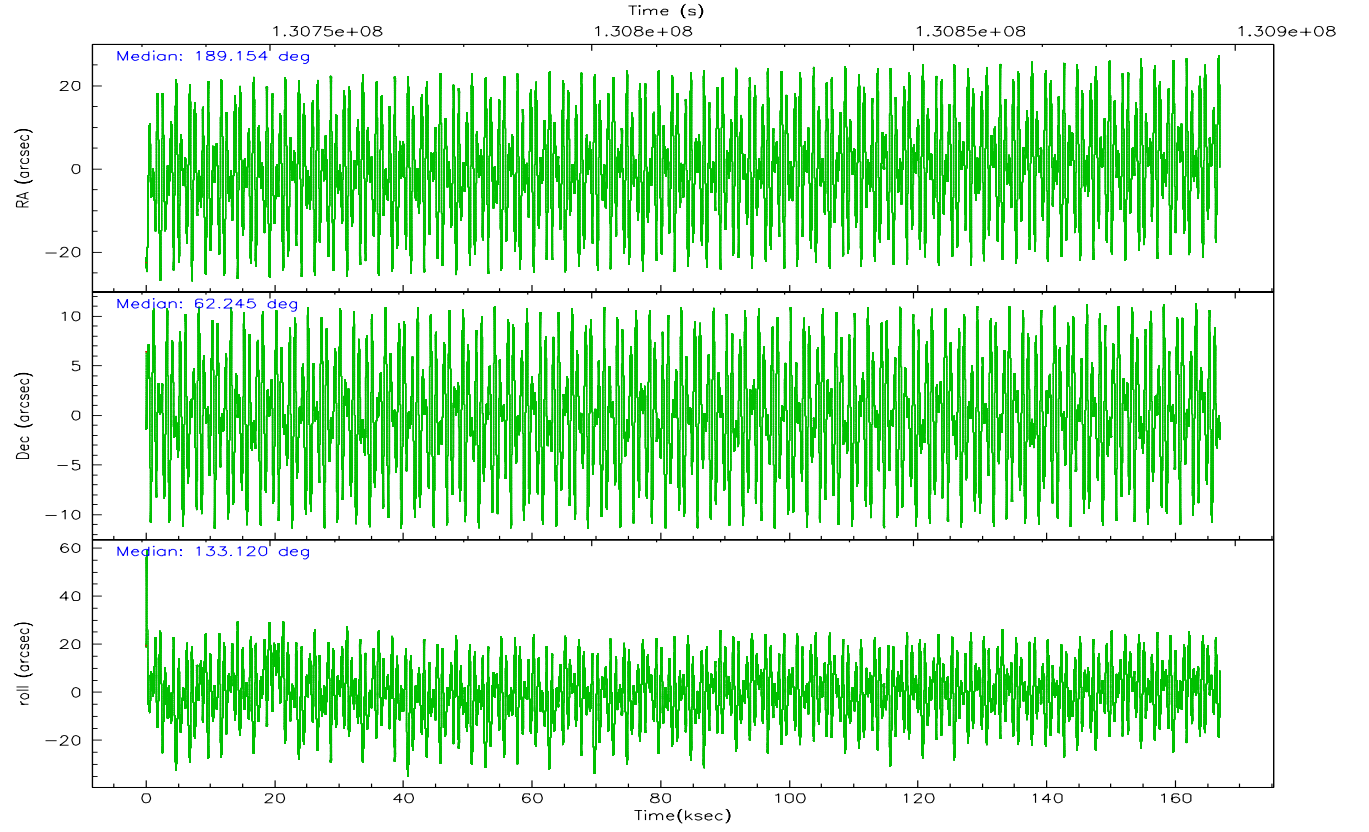
	ccd 0	ccd 1	ccd 2	ccd 3
grade 0 events	31446	32419	33462	29306
	3%	3%	3%	3%
grade 1 events	374	342	369	372
	0%	0%	0%	0%
grade 2 events	19573	18788	19709	16596
	2%	2%	2%	1%
grade 3 events	10128	11437	9408	9532
	1%	1%	0%	1%
grade 4 events	9414	10962	9485	9197
	1%	1%	0%	1%
grade 5 events	24381	26768	23019	26980
	2%	3%	2%	2%
grade 6 events	15572	17179	14959	15244
	1%	2%	1%	1%
grade 7 events	734793	718749	846774	797268
	86%	85%	88%	88%

2.2 Compared Parameters

Parameter	Planned	Actual	Parameter	Planned	Actual
Instrument	ACIS	ACIS	Obspar format version number	6	6
Detector	ACIS-0123	ACIS-0123	Obspar file type	PREDICTED	ACTUAL
Grating	NONE	NONE	Obspar update status	NONE	UPDATED
Data mode	VFAINT	VFAINT	On-chip summing requested	N	N
Observation mode	POINTING	POINTING	Subarray requested	NONE	NONE
Pointing RA	189.210025	189.1536806872042	Alternating exposures requested	N	N
Pointing Dec	62.237031	62.24493190717373	Primary exposure time	0.000000	3.1
Pointing Roll	132.872786	133.1313324236169			
Roll angle	134.000000	134.000000			
Roll tolerance	10.000000	10.000000			
Roll constraint allows 180D rotation	N	N			
SIM focus pos (mm)	-0.782348	-0.7809083437167272			
SIM defocus (mm)	0	0.001439871863259334			
SIM translation stage pos (mm)	-227.712463	-227.7139939163845			
SIM translation stage offset (mm)	-5.88	-5.878459086545149			
Observation start time	130730949.184000	130729944.3056			
Observation start date	2002-02-22T02:08:05	2002-02-22T01:52:24			
Observation end time	130897649.184000	130898370.77491			
Observation end date	2002-02-24T00:26:25	2002-02-24T00:39:30			
Read mode	TIMED	TIMED			

2.3 Aspect



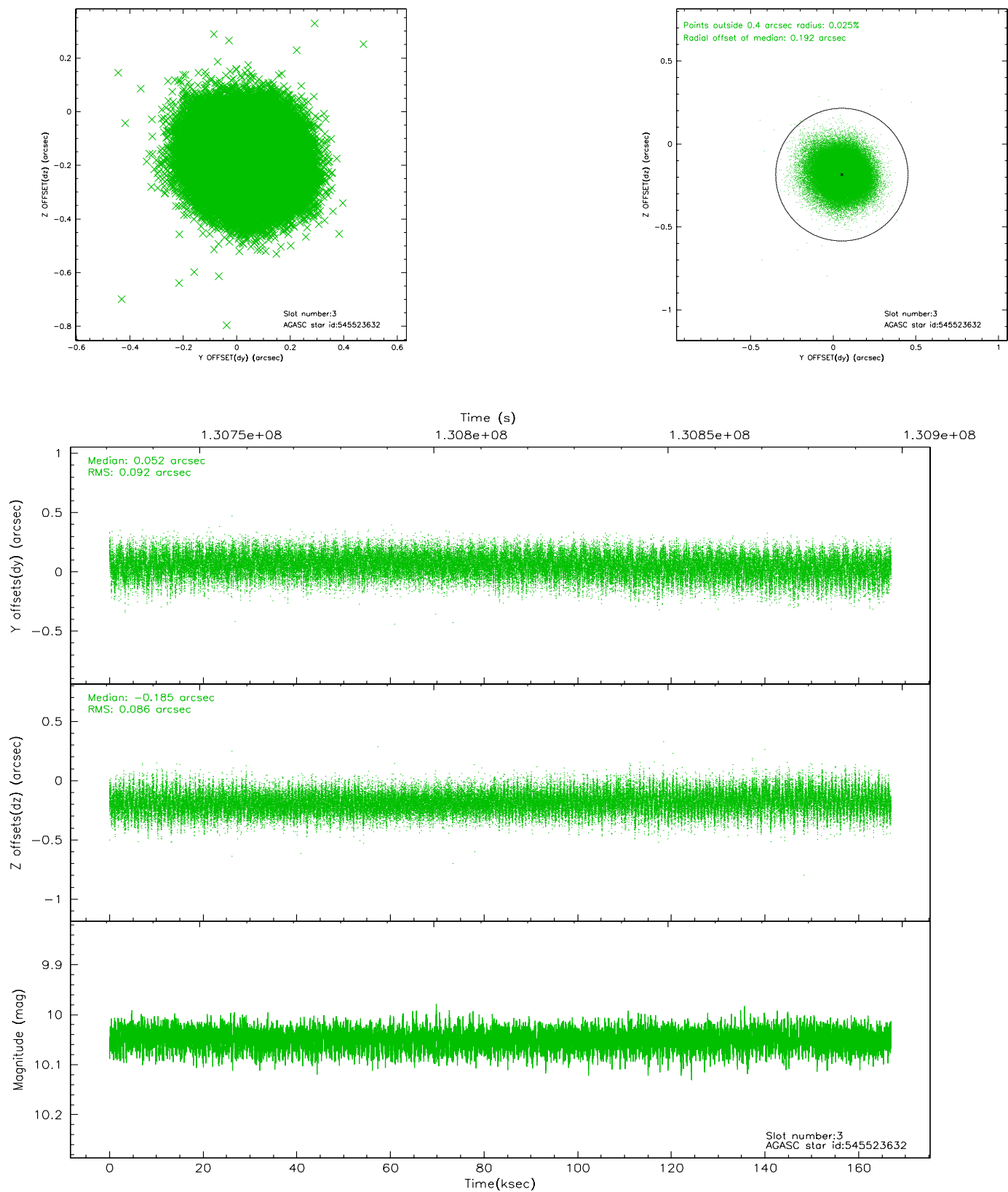


Slot Statistics

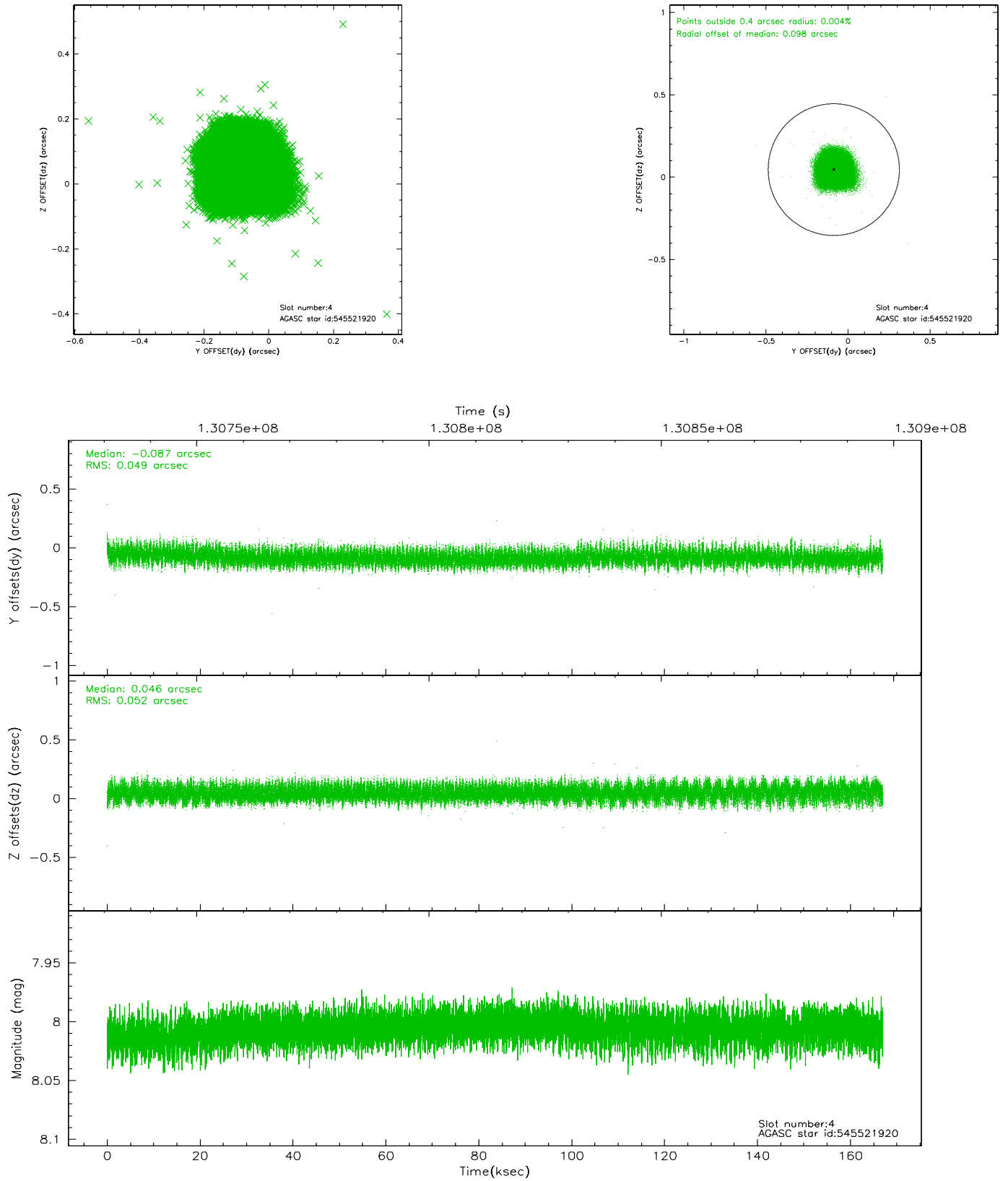
slot	status	id	mag	n_pts	med_dy	med_dz	dr1	dr2	ra	dec	mean_y	mean_z
0	FID	ACIS-I-1	7.25	40717	0.022	0.041	0.007	0.013	0.000000	0.000000	938.52	-950.84
1	FID	ACIS-I-5	7.23	40708	-0.111	0.066	0.008	0.017	0.000000	0.000000	-1809.75	946.77
2	FID	ACIS-I-6	7.26	40713	-0.004	-0.036	0.008	0.014	0.000000	0.000000	404.20	1591.01
3	GUIDE	545523632	10.05	81319	0.052	-0.185	0.133	0.218	188.952319	61.550910	-1508.92	2003.41
4	GUIDE	545521920	8.01	81435	-0.087	0.046	0.077	0.121	190.203465	62.042567	-1644.06	-761.50
5	GUIDE	545916224	9.60	80731	-0.000	-0.007	0.104	0.179	188.817359	62.651242	1536.43	-539.69
6	GUIDE	545916288	10.05	79544	0.207	0.042	0.164	0.263	188.813969	62.949161	2322.18	-1269.86
7	GUIDE	545915360	9.30	81386	-0.168	0.106	0.100	0.159	190.127769	62.766153	375.81	-2411.23

2.4 Star Slots

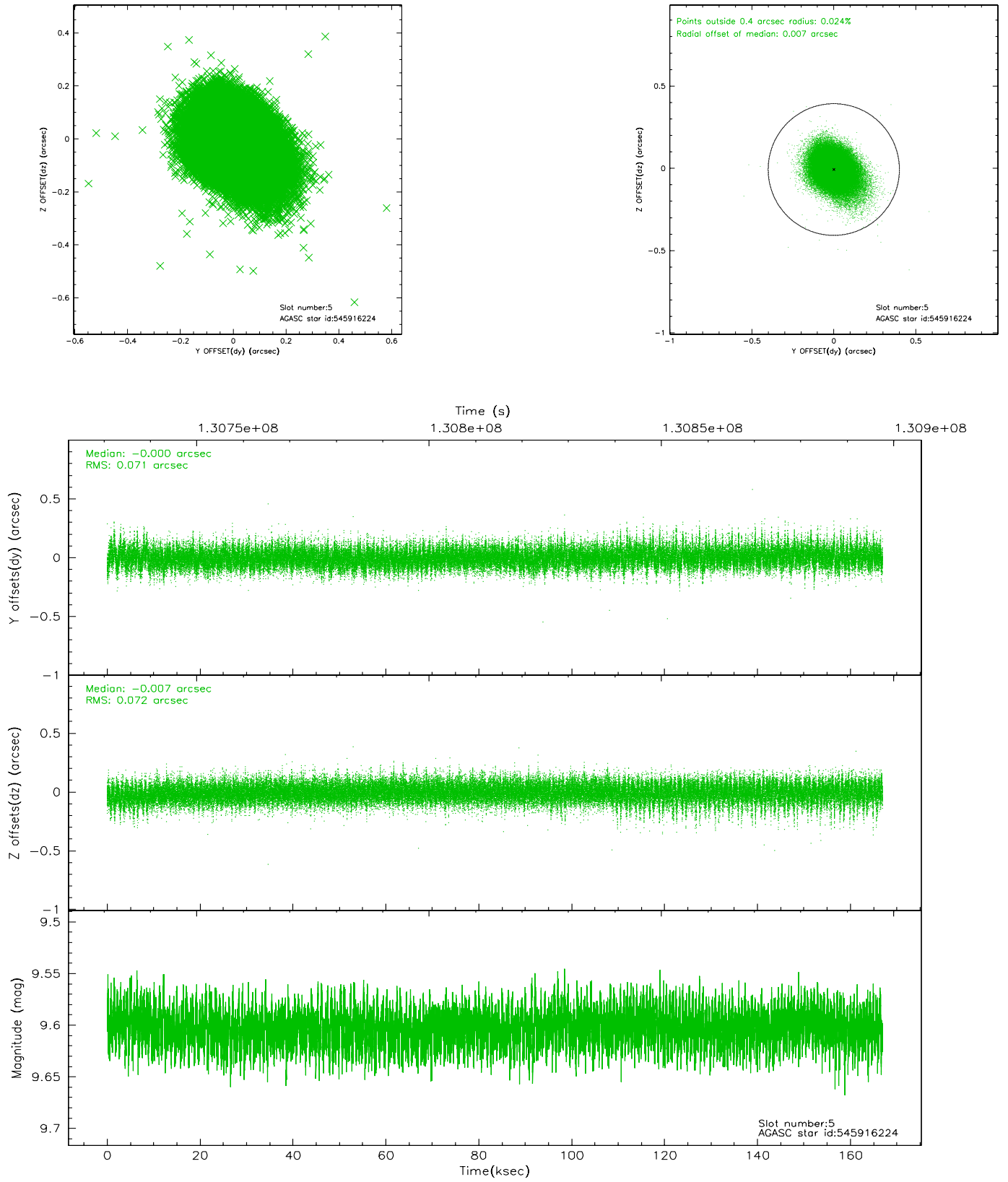
2.4.1 Slot 3



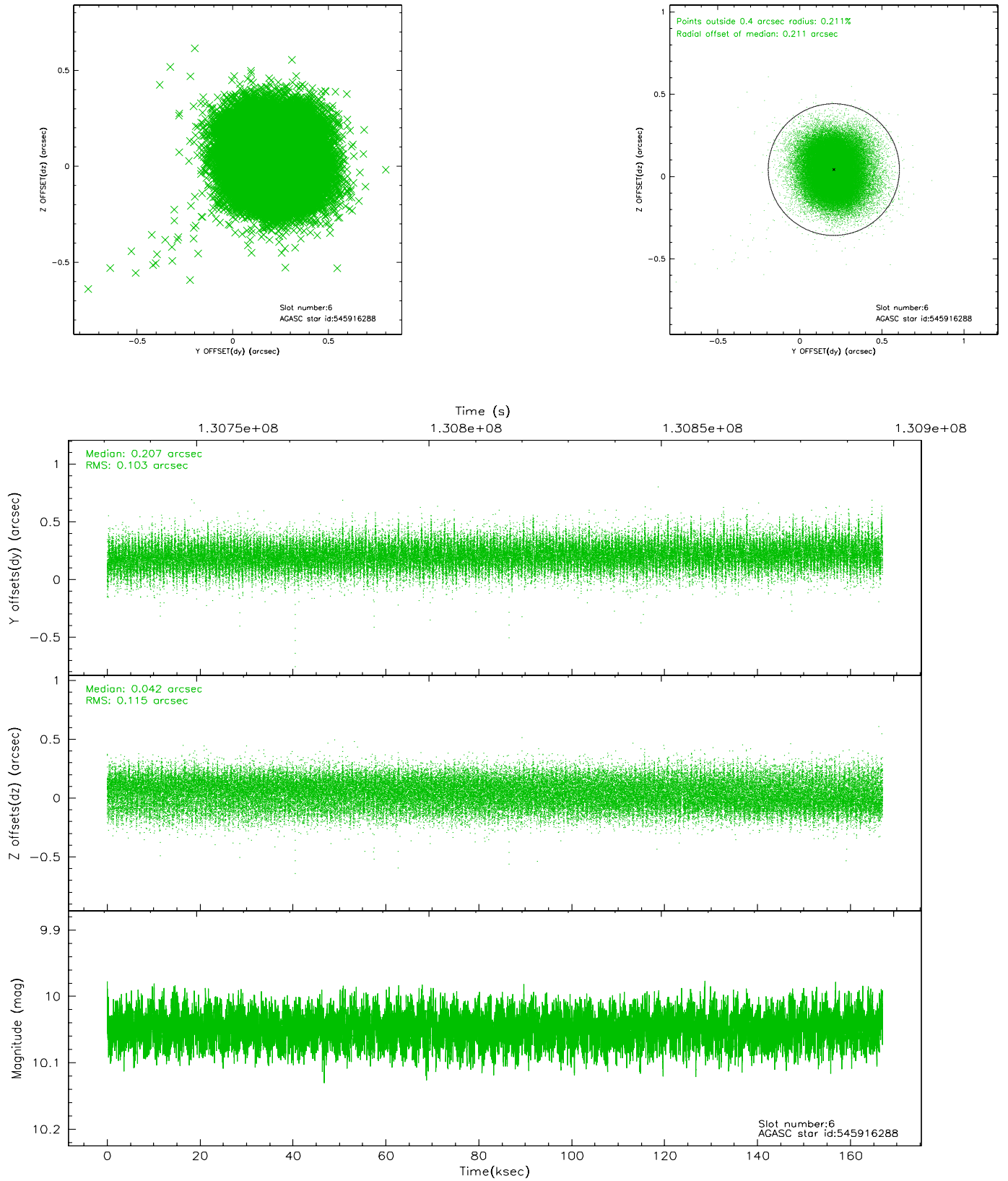
2.4.2 Slot 4



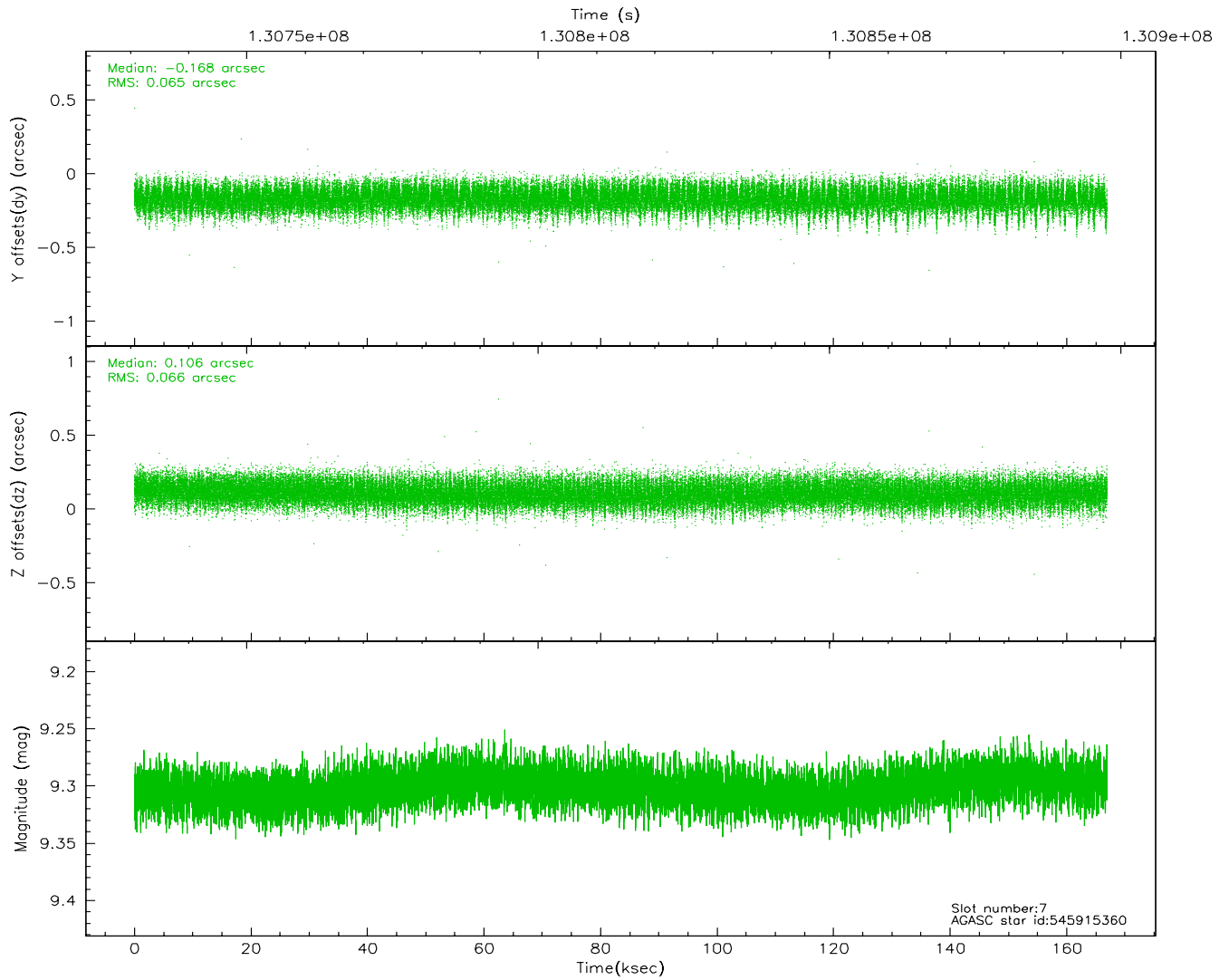
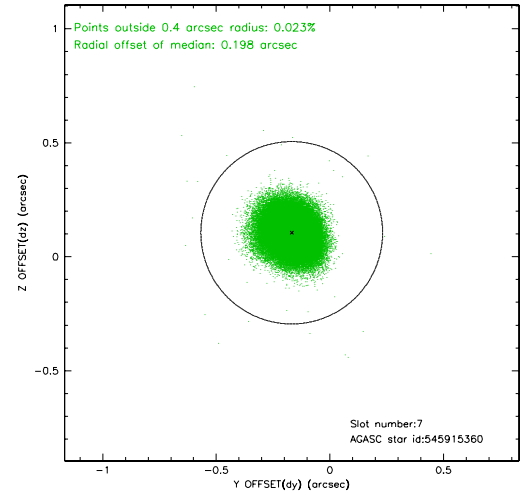
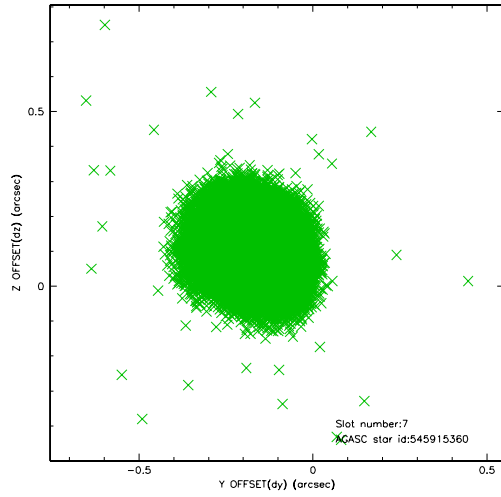
2.4.3 Slot 5



2.4.4 Slot 6

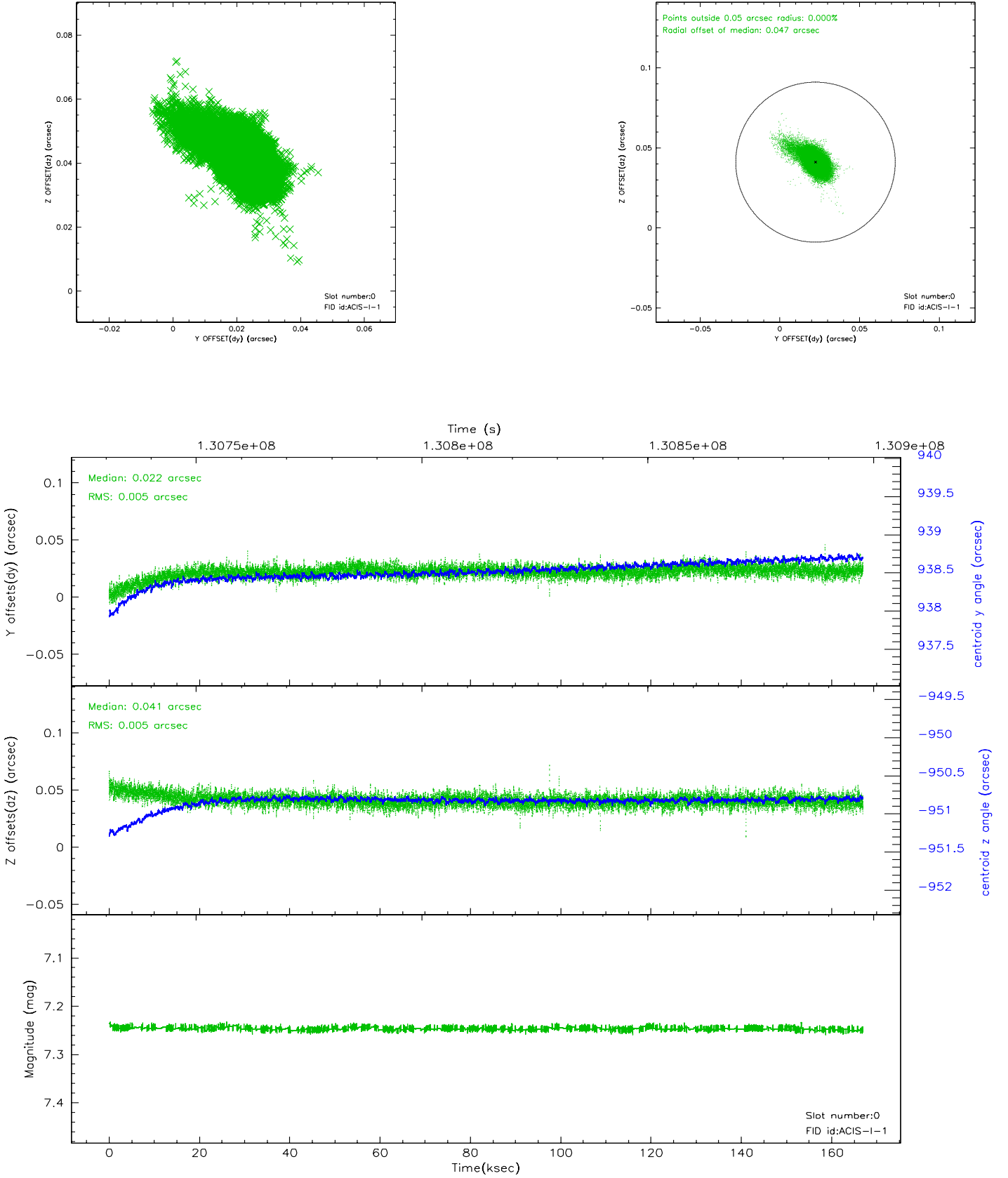


2.4.5 Slot 7

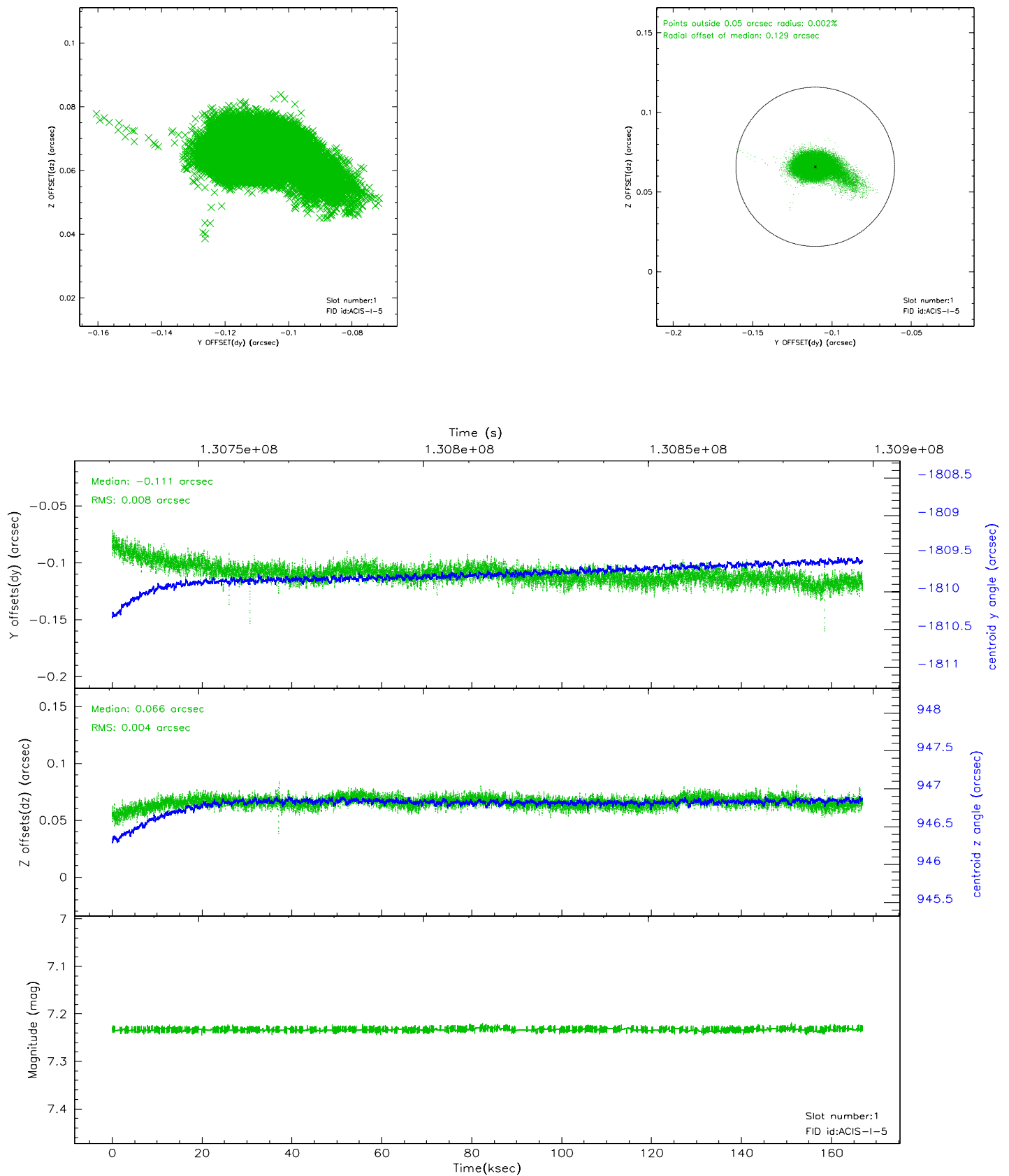


2.5 FID Slots

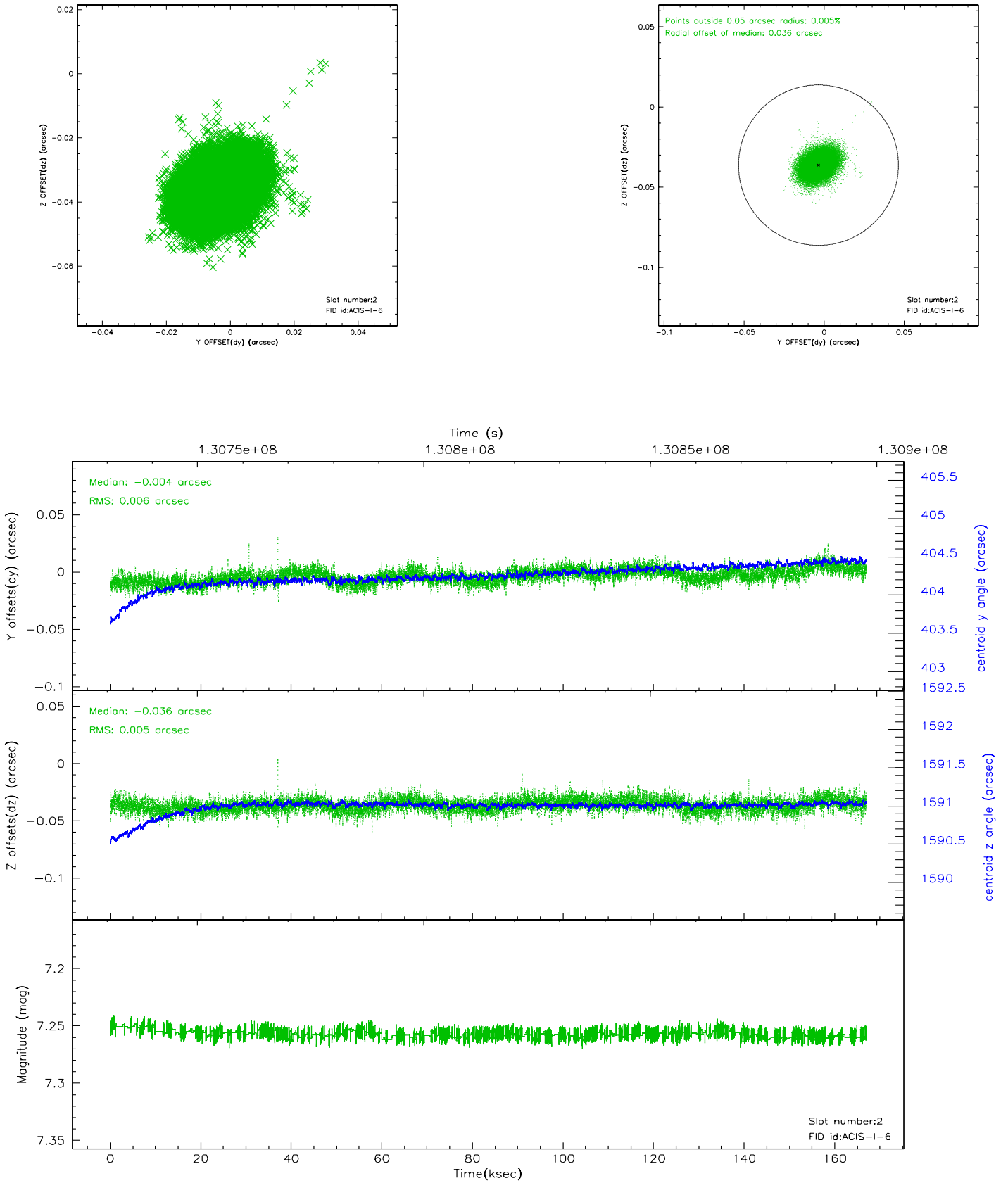
2.5.1 Slot 0



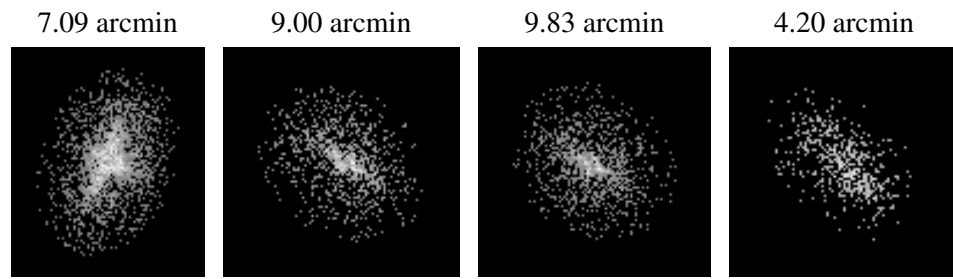
2.5.2 Slot 1



2.5.3 Slot 2



3 Point Sources



A Summary

A.1 Status

V&V Scientist	Beth Sundheim
V&V Date (YYYY-MM-DD)	2006.09.05
V&V Edition	1
V&V Disposition and Status	OK
V&V Charge Time	166.913

A.2 Comments

Roll constraint satisfied.