

V&V Reference Report

L2 ASCDS Version : 7.6.9

Observation 3361 - L2 Version 001
Chandra X-Ray Center

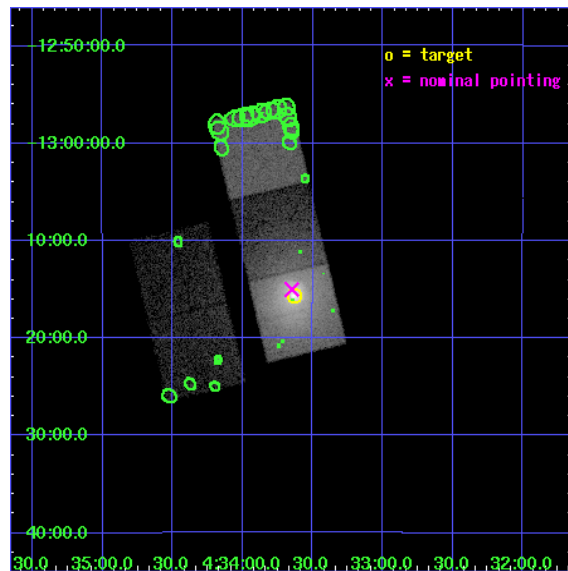
L2 Processing Date : Jan 5 2007

Contents

1	Front	2
2	OBI	3
2.1	OBI	3
2.1.1	Images	3
2.1.2	Bias	3
2.1.3	Parameters	4
2.1.4	Events	4
2.2	Compared Parameters	5
2.3	Aspect	6
2.4	Star Slots	9
2.4.1	Slot 3	9
2.4.2	Slot 4	10
2.4.3	Slot 5	11
2.4.4	Slot 6	12
2.4.5	Slot 7	13
2.5	FID Slots	14
2.5.1	Slot 0	14
2.5.2	Slot 1	15
2.5.3	Slot 2	16
3	Point Sources	17
A	Summary	18
A.1	Status	18
A.2	Comments	18

1 Front

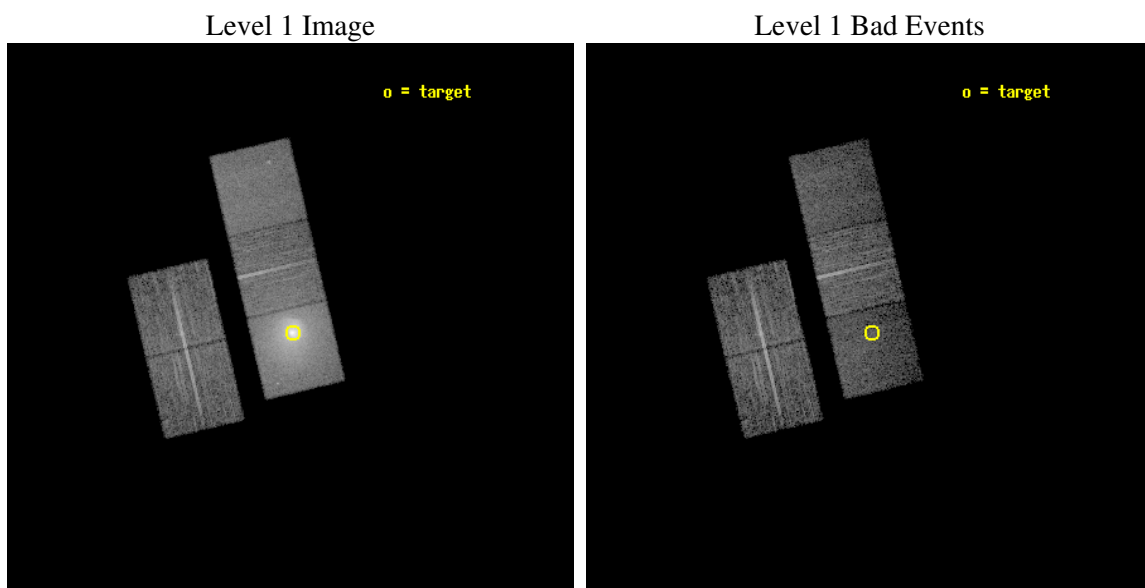
seq_num	800292
obs_id	3361
title	SPATIAL DISTRIBUTION OF ABUNDANCE AND TEMPERATURE IN ABELL 496
observer	PROFESSOR RAYMOND WHITE III
object	ABELL 496
dtcycle	0
cycle	P
ra_targ	68.4075
dec_targ	-13.26194
ra_nom	68.412139496687
dec_nom	-13.25025644659
roll_nom	76.73821362171
revision	2
ontime	10127.95904918
livetime	9999.7127333746
ontime2	10127.95904918
ontime3	10131.200009435
ontime5	10131.200009435
ontime6	10131.200009435
ontime7	10127.95904918
l2events	200729



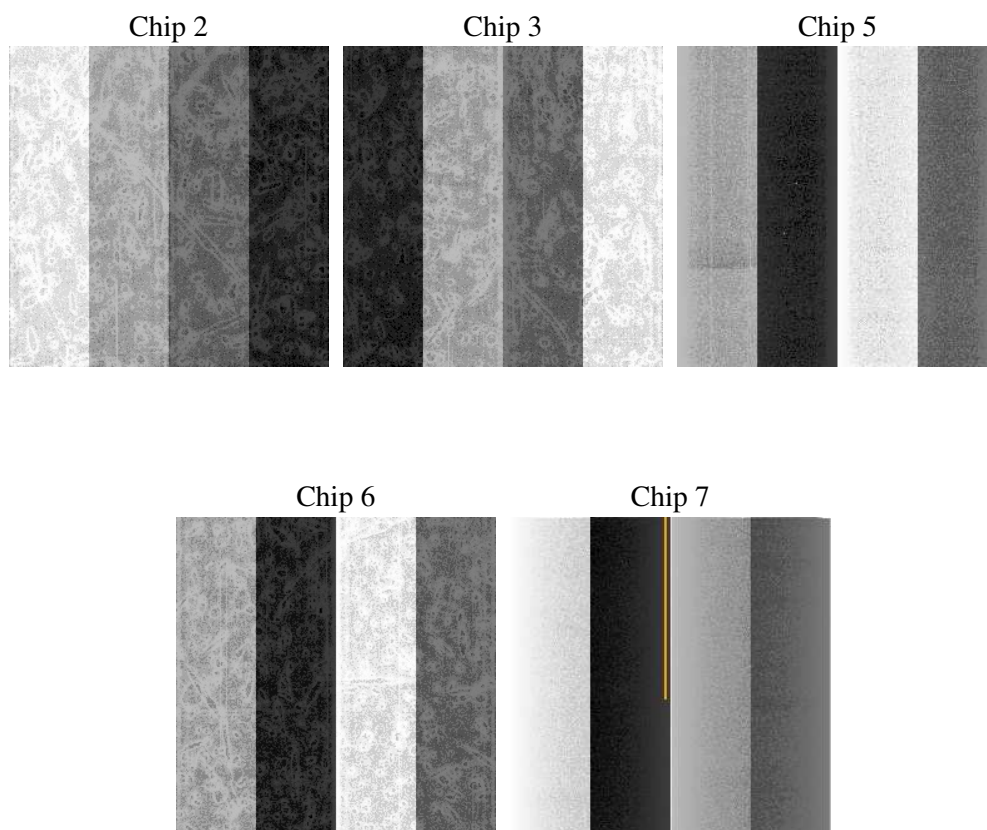
2 OBI

2.1 OBI

2.1.1 Images



2.1.2 Bias



2.1.3 Parameters

obi_num	1
ascdsver	7.6.9
caldbver	3.2.4
date	2007-01-05T10:13:52
revision	2

sched_exp_time	10000.000000
ontime	10167.012973383
ontime2	10167.012973383
ontime3	10170.253933638
ontime5	10170.253933638
ontime6	10170.253933638
ontime7	10167.012973383
l1events	415956

2.1.4 Events

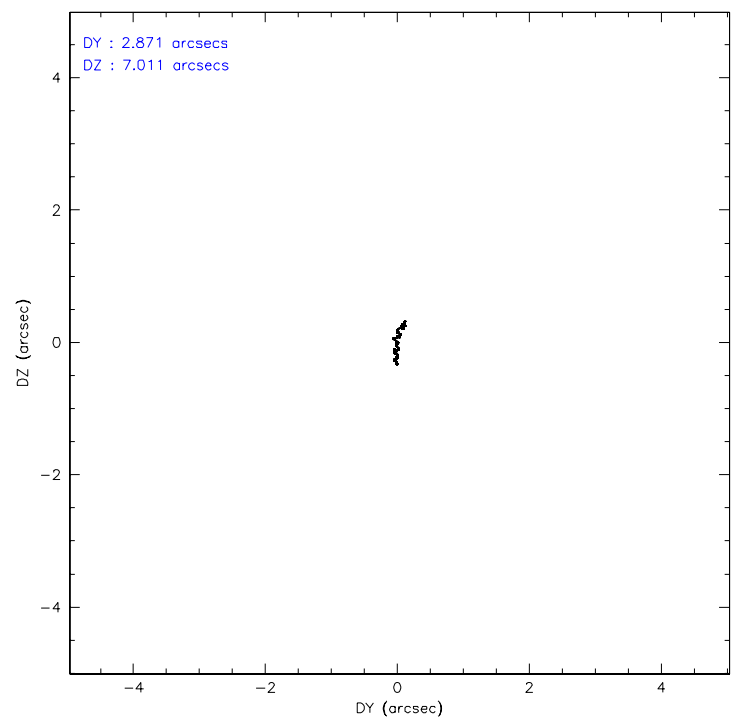
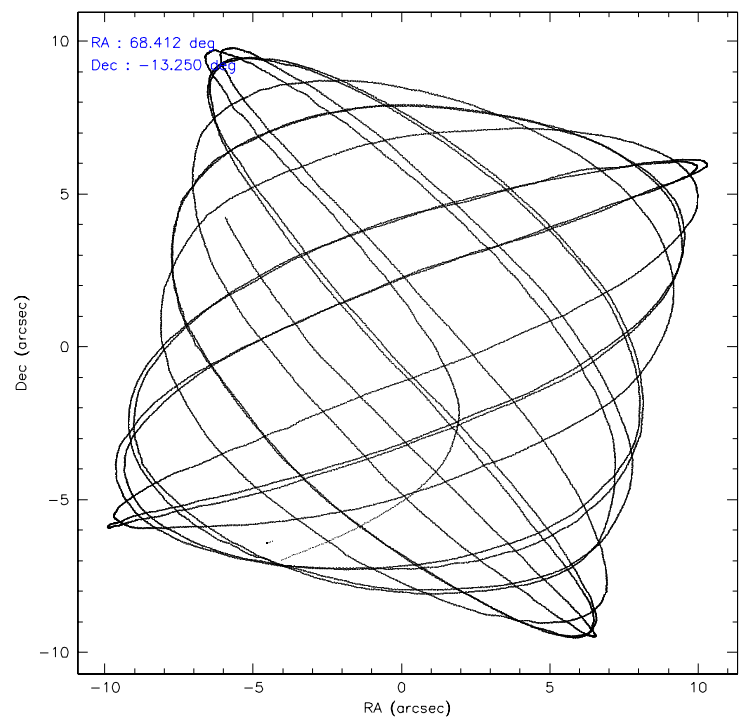
	ccd 2	ccd 3	ccd 5	ccd 6	ccd 7
level 1 events	55726	52793	71271	70278	165888
rejected events	48704	45845	33627	49715	31135
rejected %	87%	86%	47%	70%	18%

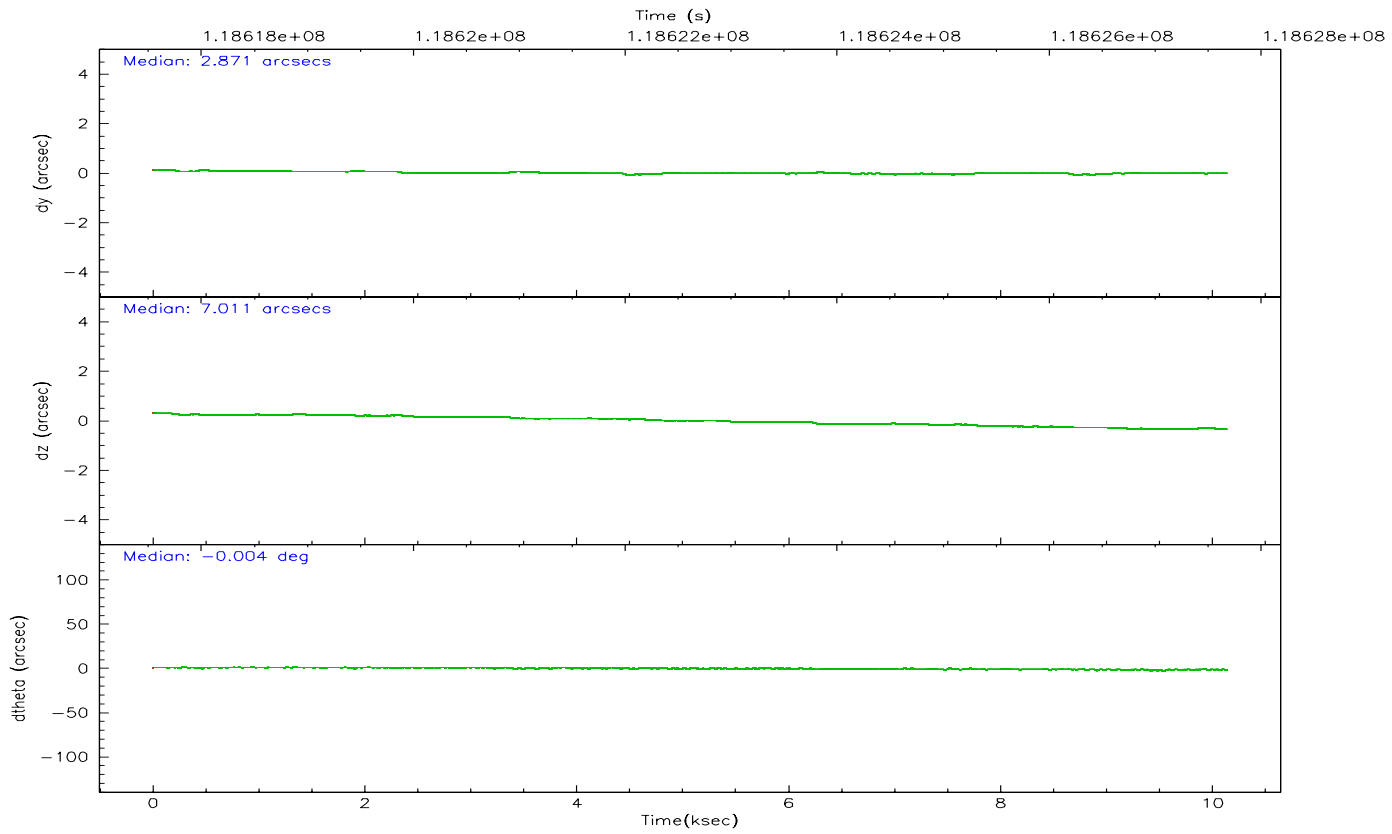
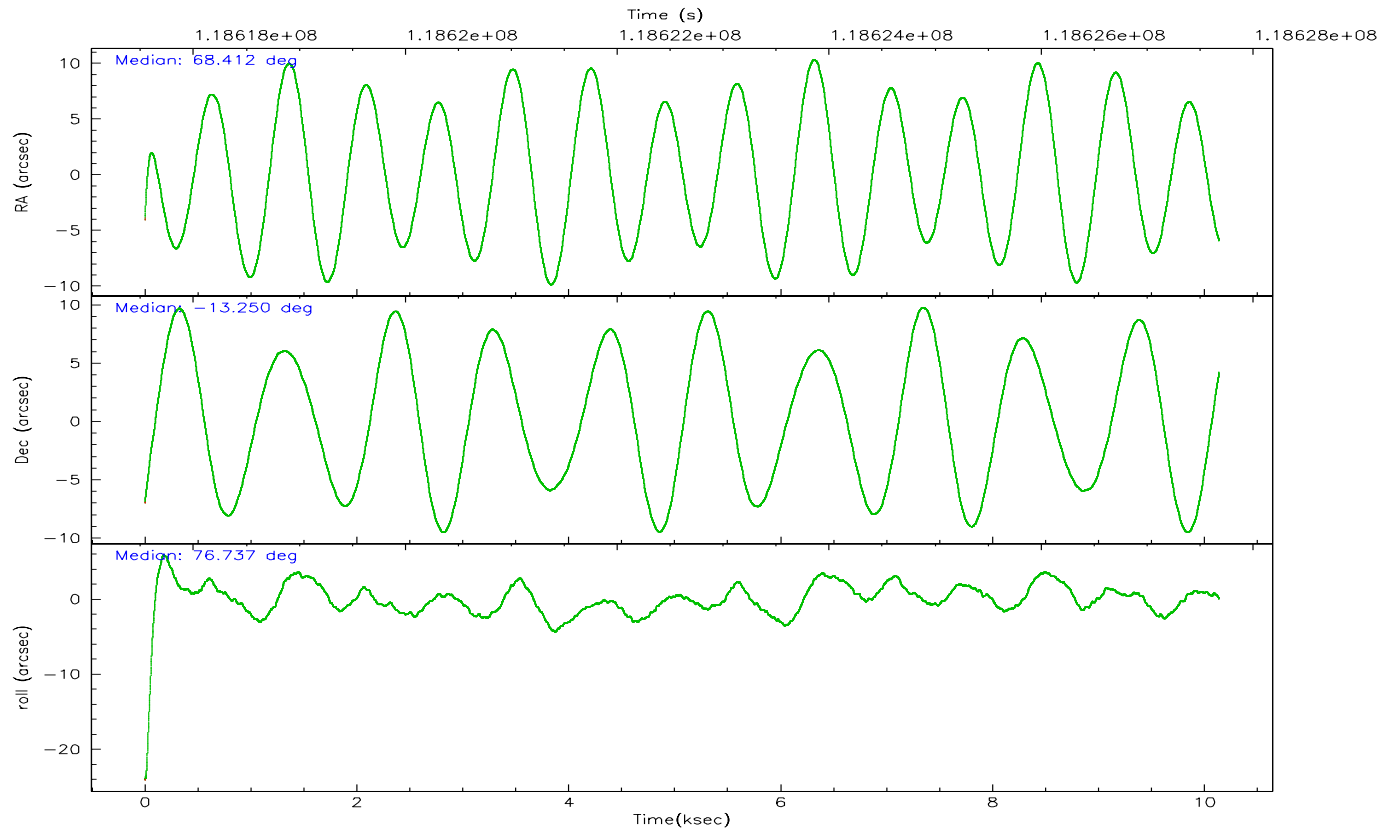
	ccd 2	ccd 3	ccd 5	ccd 6	ccd 7
grade 0 events	3463	3629	3133	14445	32442
	6%	6%	4%	20%	19%
grade 1 events	25	27	37	57	52
	0%	0%	0%	0%	0%
grade 2 events	1425	1184	12275	2807	36647
	2%	2%	17%	3%	22%
grade 3 events	549	569	1347	1022	13754
	0%	1%	1%	1%	8%
grade 4 events	595	602	1358	915	13672
	1%	1%	1%	1%	8%
grade 5 events	1392	1661	3514	1865	4695
	2%	3%	4%	2%	2%
grade 6 events	1009	997	19672	1443	38747
	1%	1%	27%	2%	23%
grade 7 events	47268	44124	29935	47724	25879
	84%	83%	42%	67%	15%

2.2 Compared Parameters

Parameter	Planned	Actual	Parameter	Planned	Actual
Instrument	ACIS	ACIS	Obspar format version number	6	6
Detector	ACIS-23567	ACIS-23567	Obspar file type	PREDICTED	ACTUAL
Grating	NONE	NONE	Obspar update status	NONE	UPDATED
Data mode	VFAINT	VFAINT	Number of optional ACIS chips dropped	0	0
Observation mode	POINTING	POINTING	On-chip summing requested	N	N
Pointing RA	68.420539	68.41213949668689	Subarray requested	NONE	NONE
Pointing Dec	-13.276272	-13.25025644659023	Alternating exposures requested	N	N
Pointing Roll	76.583541	76.73821362170955	Primary exposure time	3.200000	3.2
SIM focus pos (mm)	-0.684267	-0.6828225247311905			
SIM defocus (mm)	0	0.001444936568705701			
SIM translation stage pos (mm)	-190.132523	-190.1400660498719			
SIM translation stage offset (mm)	0	0.00754346686406393			
Observation start time	118617683.184000	118616544.0455			
Observation start date	2001-10-04T21:20:19	2001-10-04T21:02:24			
Observation end time	118627683.184000	118629223.296			
Observation end date	2001-10-05T00:06:59	2001-10-05T00:33:43			
Read mode	TIMED	TIMED			

2.3 Aspect



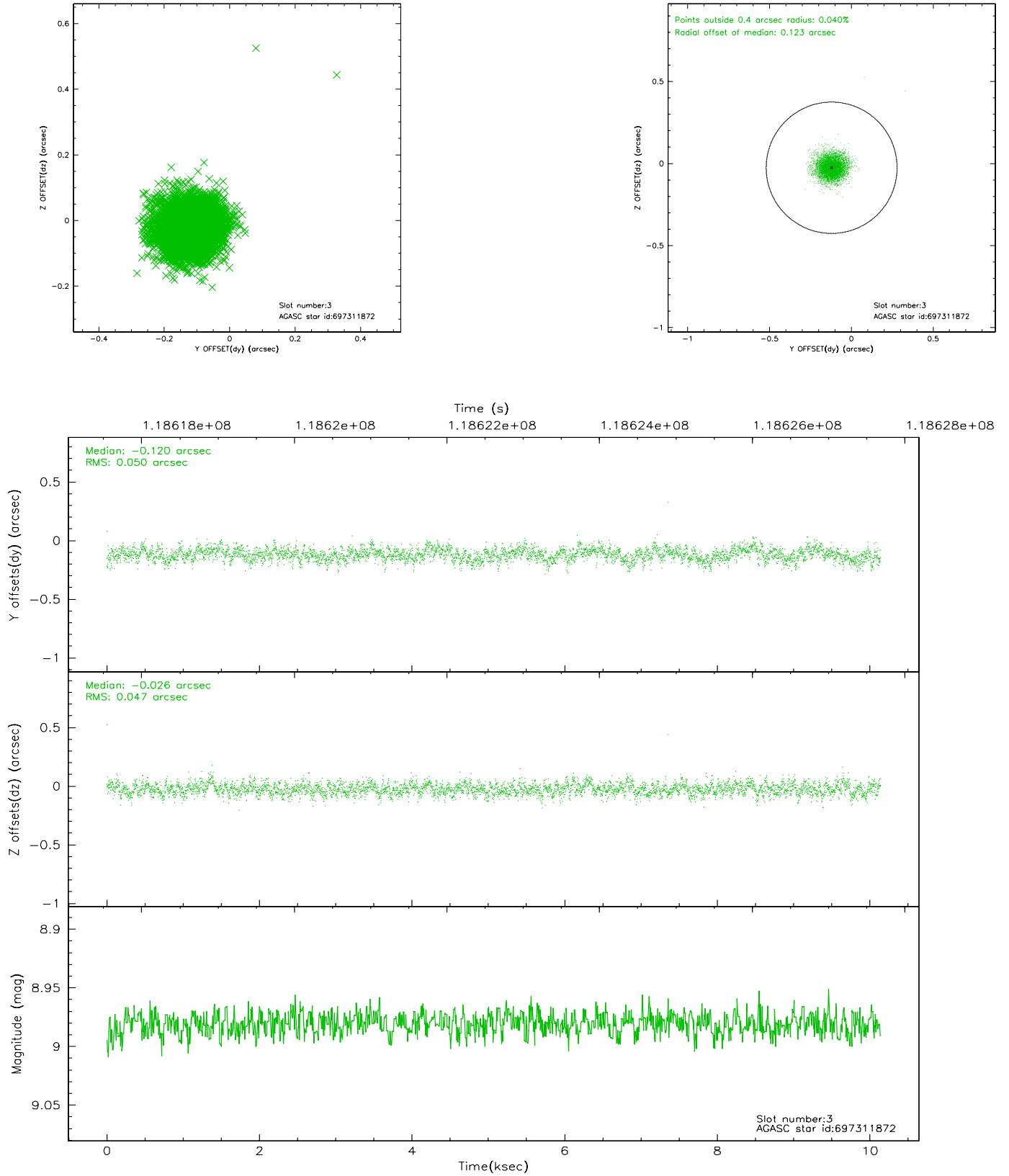


Slot Statistics

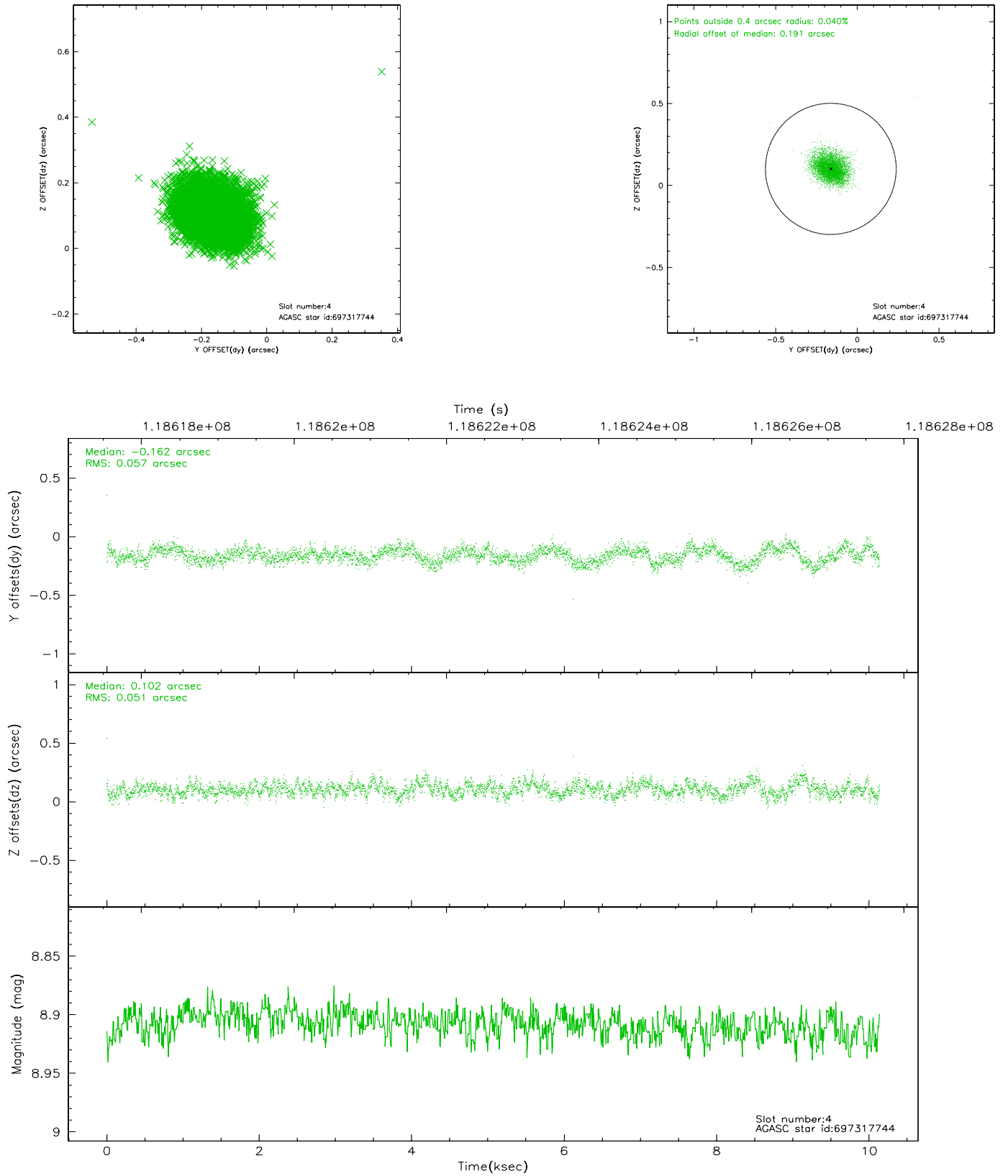
slot	status	id	mag	n_pts	med_dy	med_dz	dr1	dr2	ra	dec	mean_y	mean_z
0	FID	ACIS-S-2	7.11	2474	0.006	0.038	0.009	0.016	0.000000	0.000000	-755.52	-1728.13
1	FID	ACIS-S-4	7.20	2474	-0.092	-0.013	0.007	0.012	0.000000	0.000000	2157.43	179.76
2	FID	ACIS-S-5	7.23	2474	0.055	-0.017	0.007	0.013	0.000000	0.000000	-1807.64	174.02
3	GUIDE	697311872	8.98	4947	-0.120	-0.026	0.072	0.118	68.096651	-12.552675	2269.55	1711.98
4	GUIDE	697317744	8.91	4945	-0.162	0.102	0.081	0.130	68.814094	-12.965653	1407.96	-1082.78
5	GUIDE	697312112	9.61	4945	0.236	-0.014	0.091	0.149	68.203644	-13.816922	-2068.30	286.03
6	GUIDE	697311296	9.15	4944	0.155	-0.163	0.087	0.147	67.817784	-13.358108	-778.64	1984.97
7	GUIDE	697317872	9.92	4942	-0.104	0.101	0.136	0.218	68.842801	-12.751213	2181.77	-1002.81

2.4 Star Slots

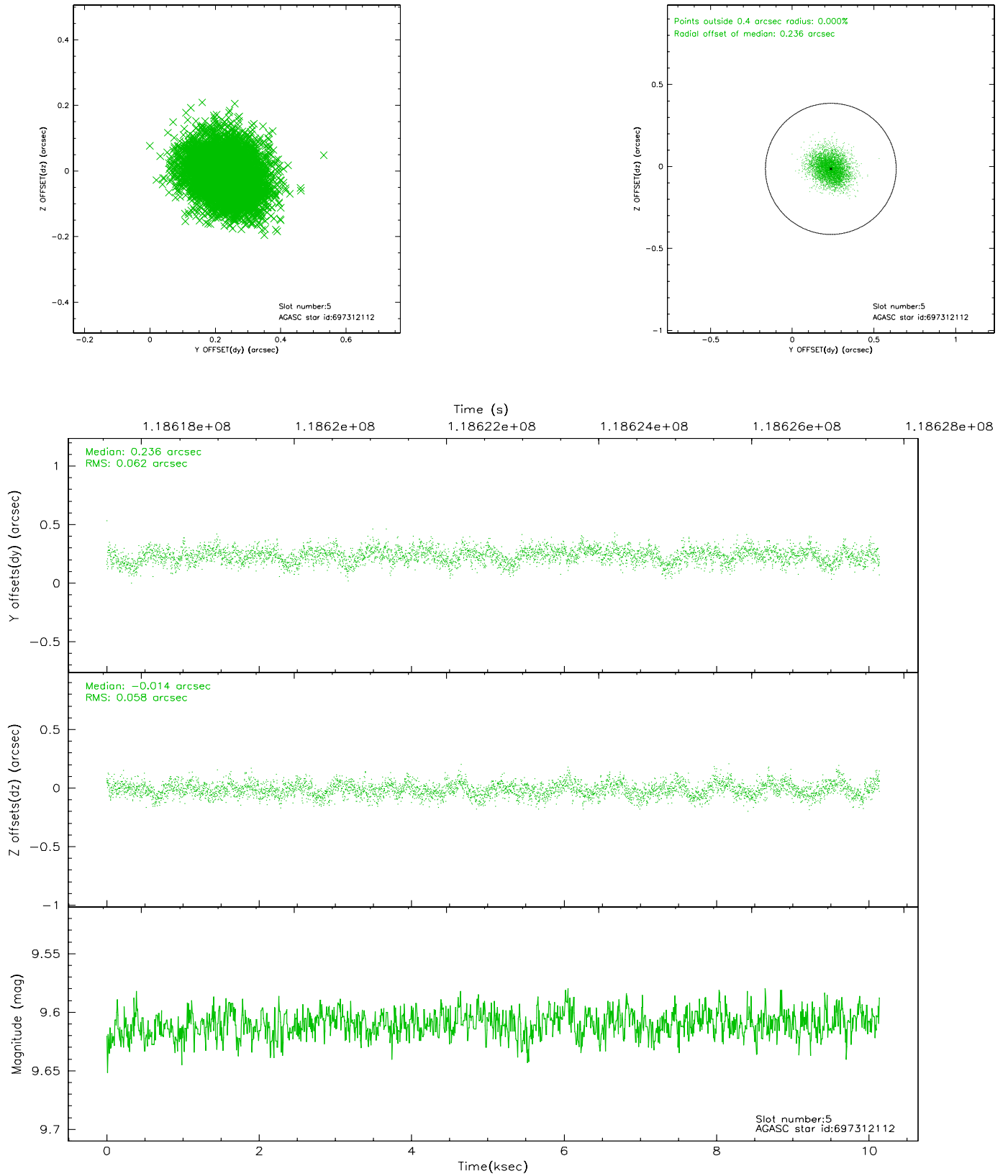
2.4.1 Slot 3



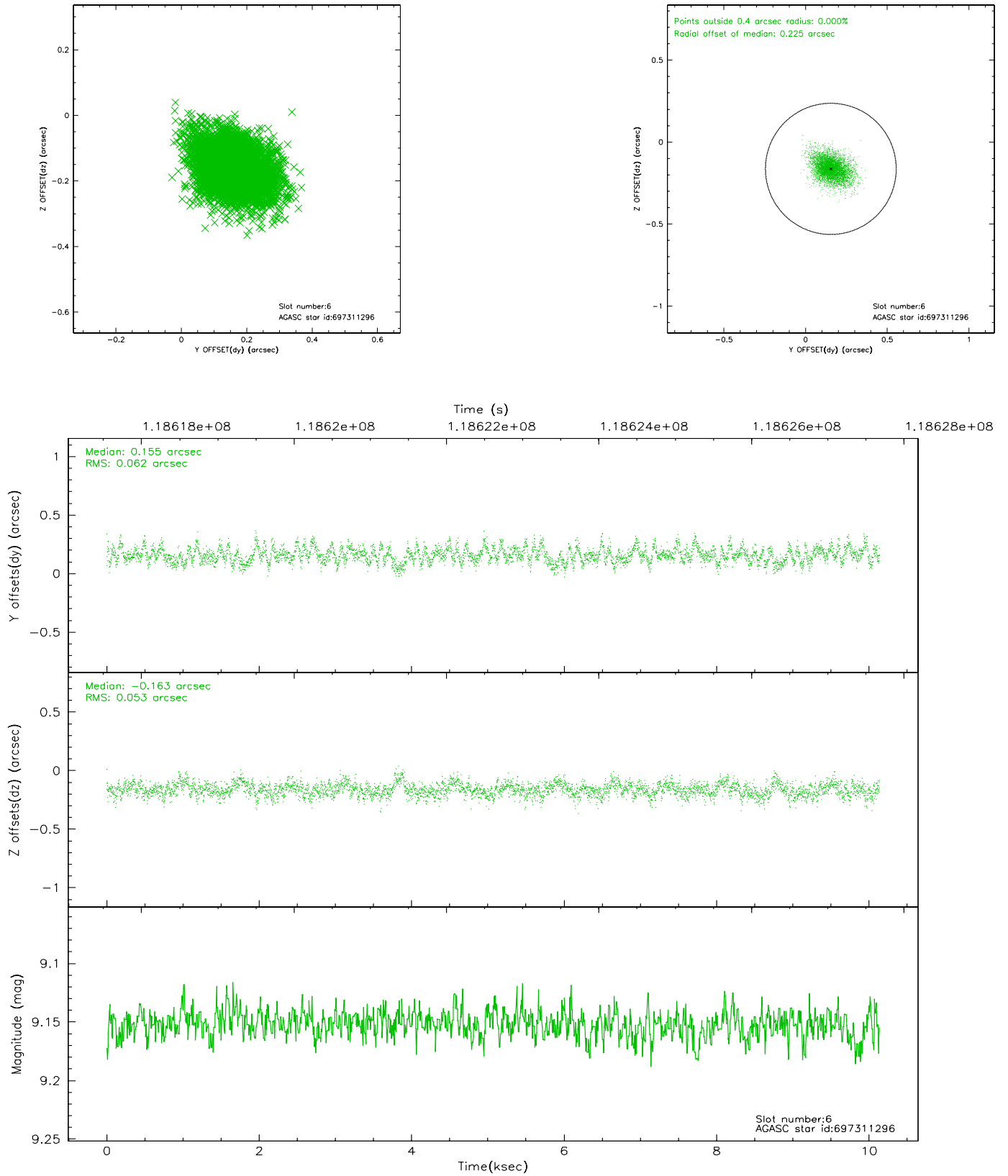
2.4.2 Slot 4



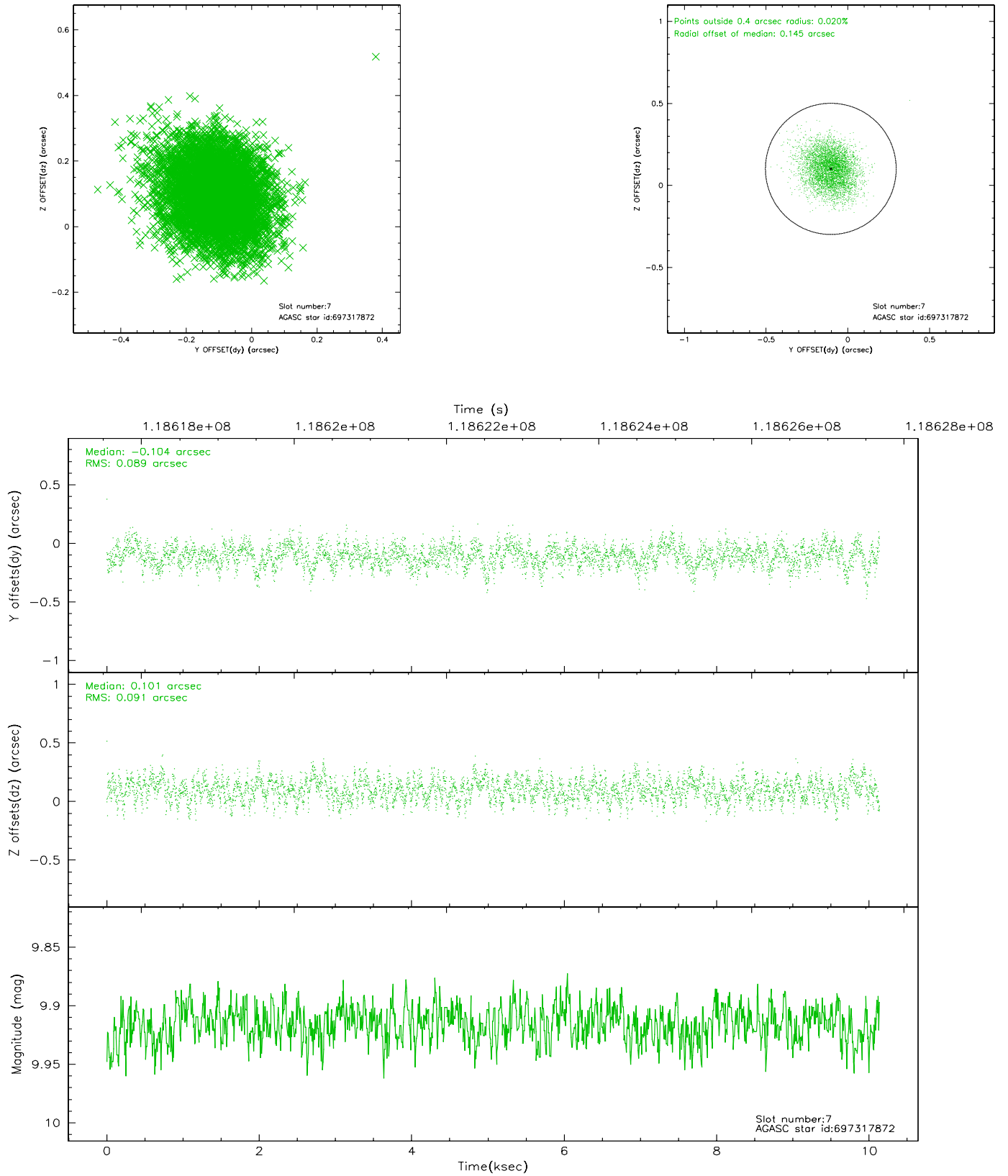
2.4.3 Slot 5



2.4.4 Slot 6

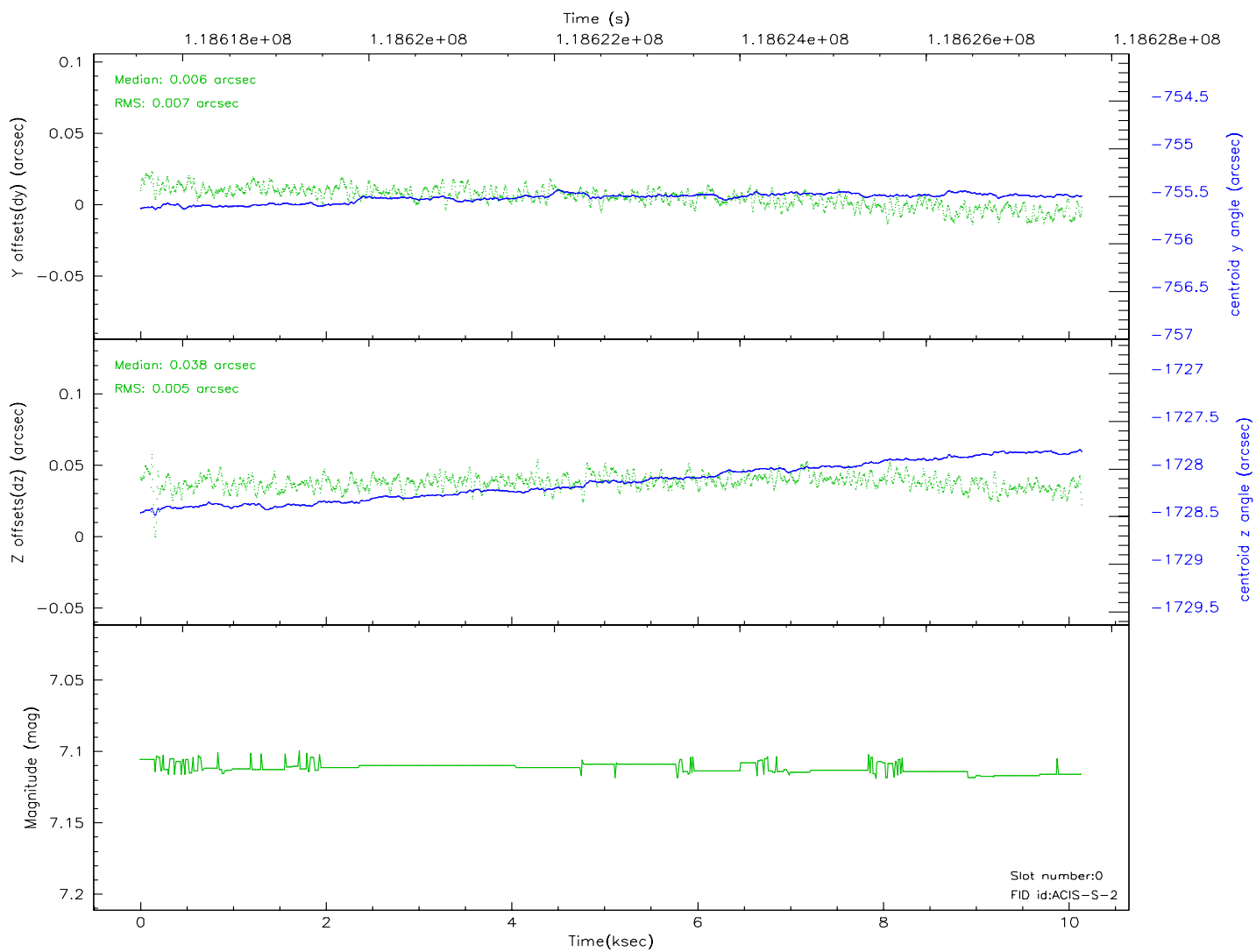
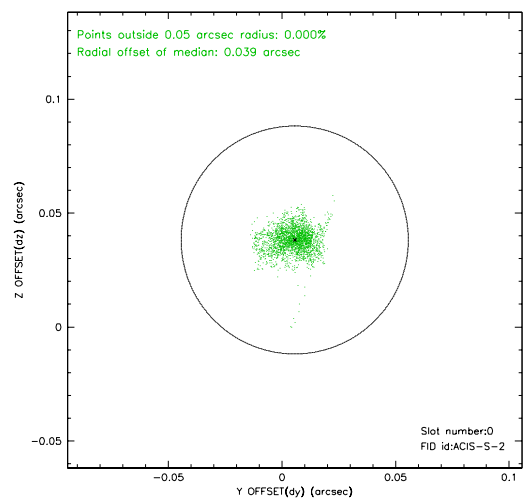
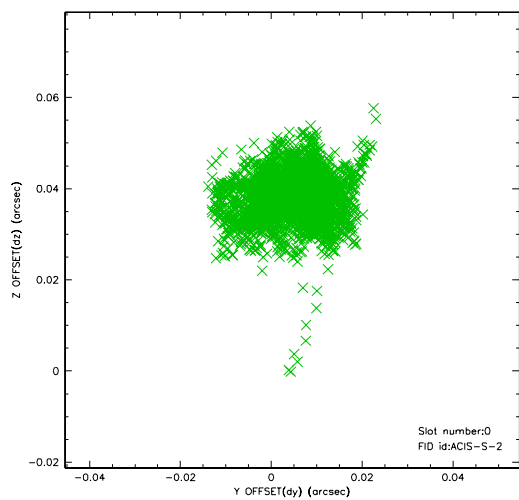


2.4.5 Slot 7

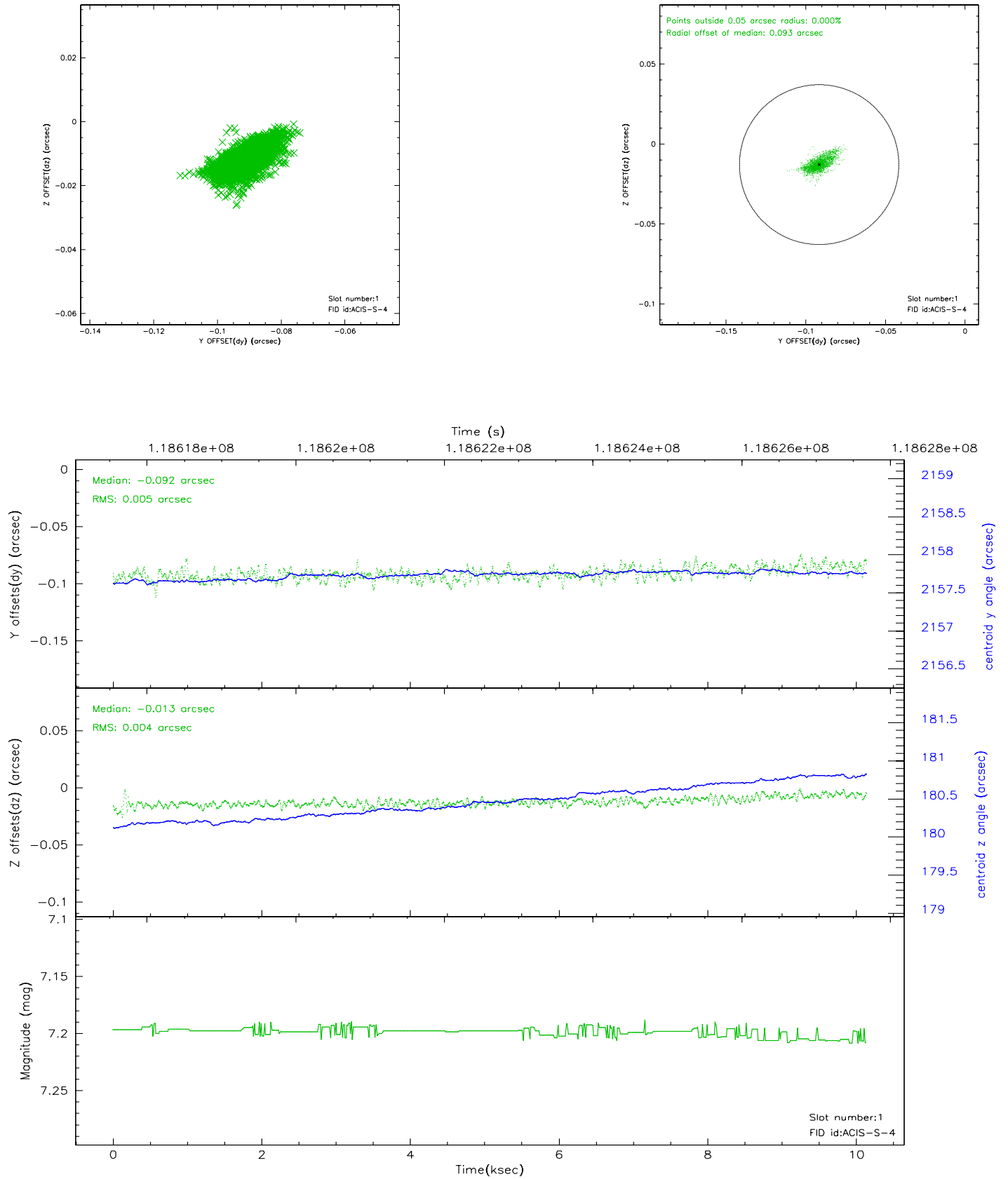


2.5 FID Slots

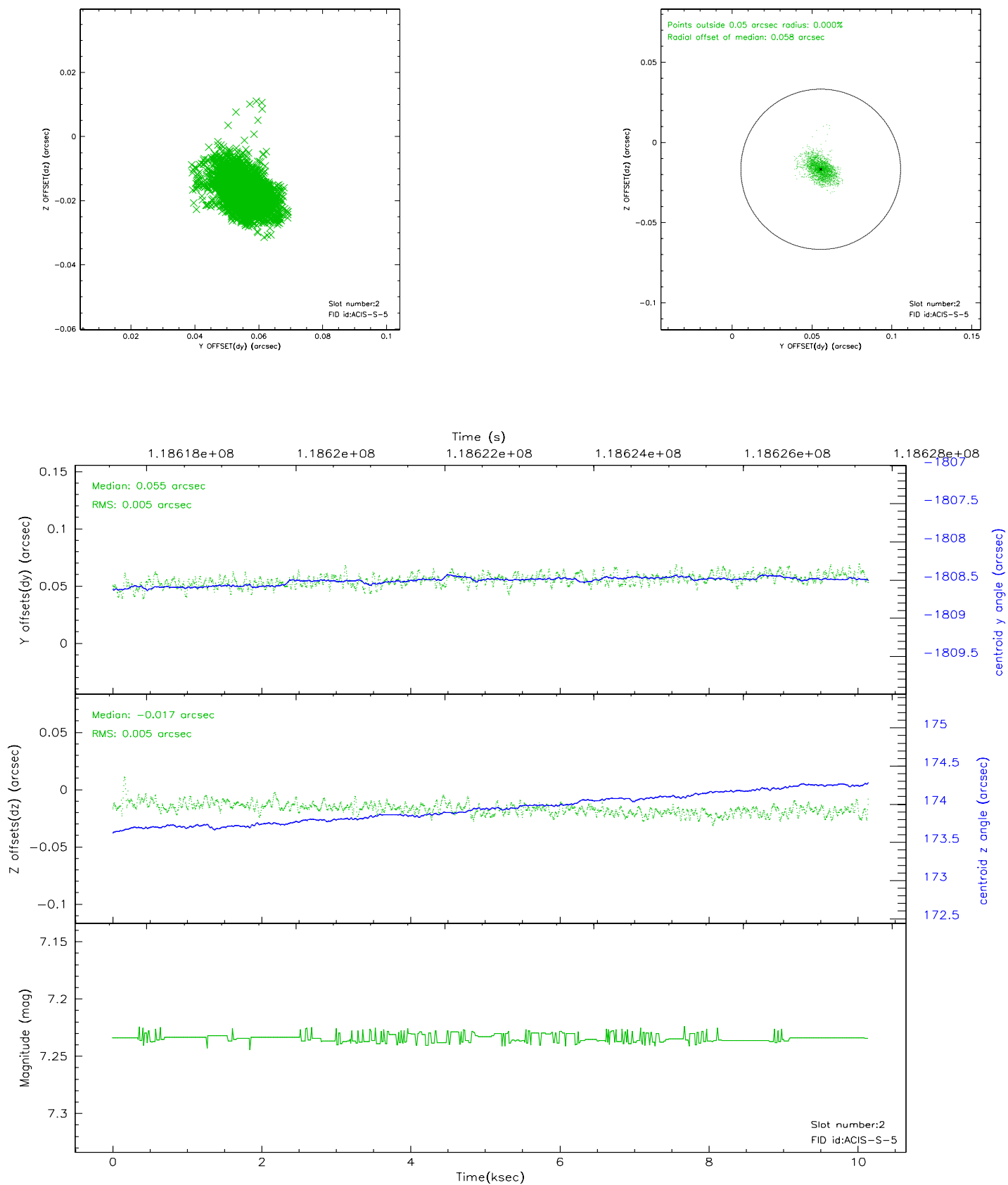
2.5.1 Slot 0



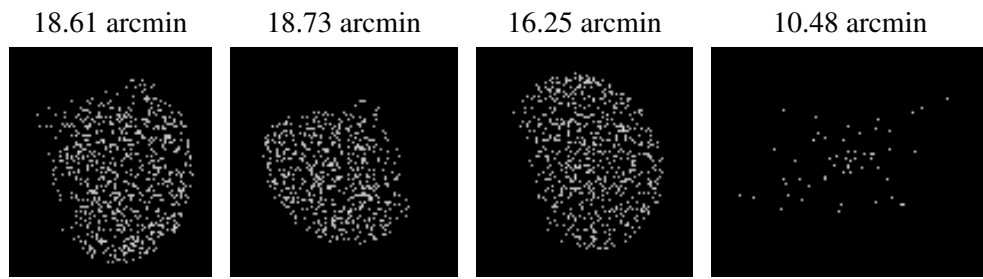
2.5.2 Slot 1



2.5.3 Slot 2



3 Point Sources



A Summary

A.1 Status

V&V Scientist	Beth Sundheim
V&V Date (YYYY-MM-DD)	2007.01.05
V&V Edition	1
V&V Disposition and Status	OK
V&V Charge Time	10.127

A.2 Comments