

V&V Reference Report

L2 ASCDS Version : 8.4.5

Observation 3211 - L2 Version 3
Chandra X-Ray Center

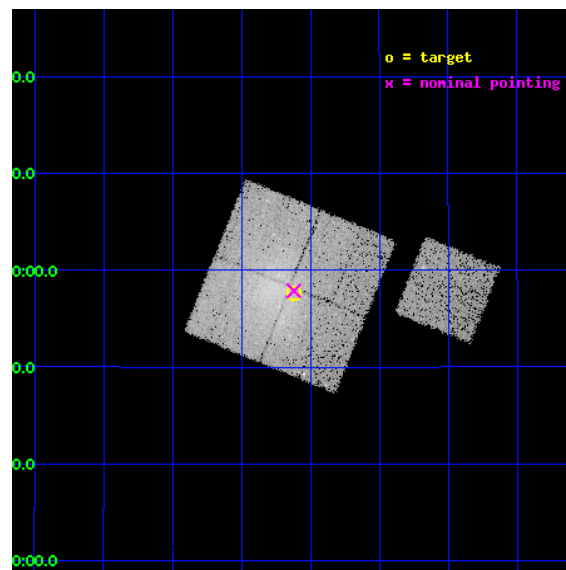
L2 Processing Date : Oct 4 2012

Contents

1	Front	2
2	OBI	3
2.1	OBI	3
2.1.1	Images	3
2.1.2	Bias	3
2.1.3	Parameters	4
2.1.4	Events	4
2.2	Compared Parameters	5
2.3	Aspect	6
2.4	Star Slots	9
2.4.1	Slot 3	9
2.4.2	Slot 4	10
2.4.3	Slot 5	11
2.4.4	Slot 6	12
2.4.5	Slot 7	13
2.5	FID Slots	14
2.5.1	Slot 0	14
2.5.2	Slot 1	15
2.5.3	Slot 2	16
A	Summary	17
A.1	Status	17
A.2	Comments	17

1 Front

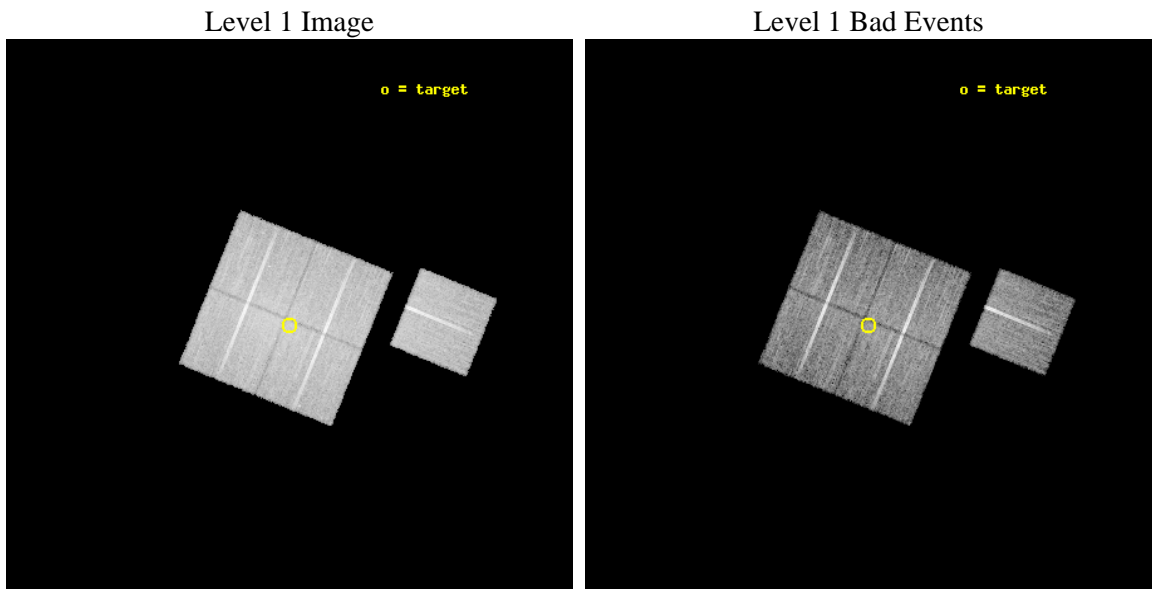
seq_num	800211	Sequence number
obs_id	3211	Observation id
title	COMPLEX CLUSTERS: MERGERS AND NARROW ANGLE TAILED RADIO SOURCES	Pr
observer	Dr. william forman	Principal investigator
object	ABELL 2147	Source name
dtcycle	0	
cycle	P	events from which exps? Prim/Second/Both
ra_targ	240.53	Observer's specified target RA [deg]
dec_targ	15.96	Observer's specified target Dec [deg]
ra_nom	240.53006347161	Nominal RA [deg]
dec_nom	15.9646526064	Nominal Dec [deg]
roll_nom	112.08647075283	Nominal Roll [deg]
revision	3	Processing version of data
ontime	18115.635506243	Sum of GTIs [s]
livetime	17878.941391817	Livetime [s]
ontime0	18106.089455664	Sum of GTIs [s]
ontime1	18112.412485927	Sum of GTIs [s]
ontime2	18115.594466209	Sum of GTIs [s]
ontime3	18115.635506243	Sum of GTIs [s]
ontime6	18112.330366015	Sum of GTIs [s]
l2events	92815	Number of level 2 events



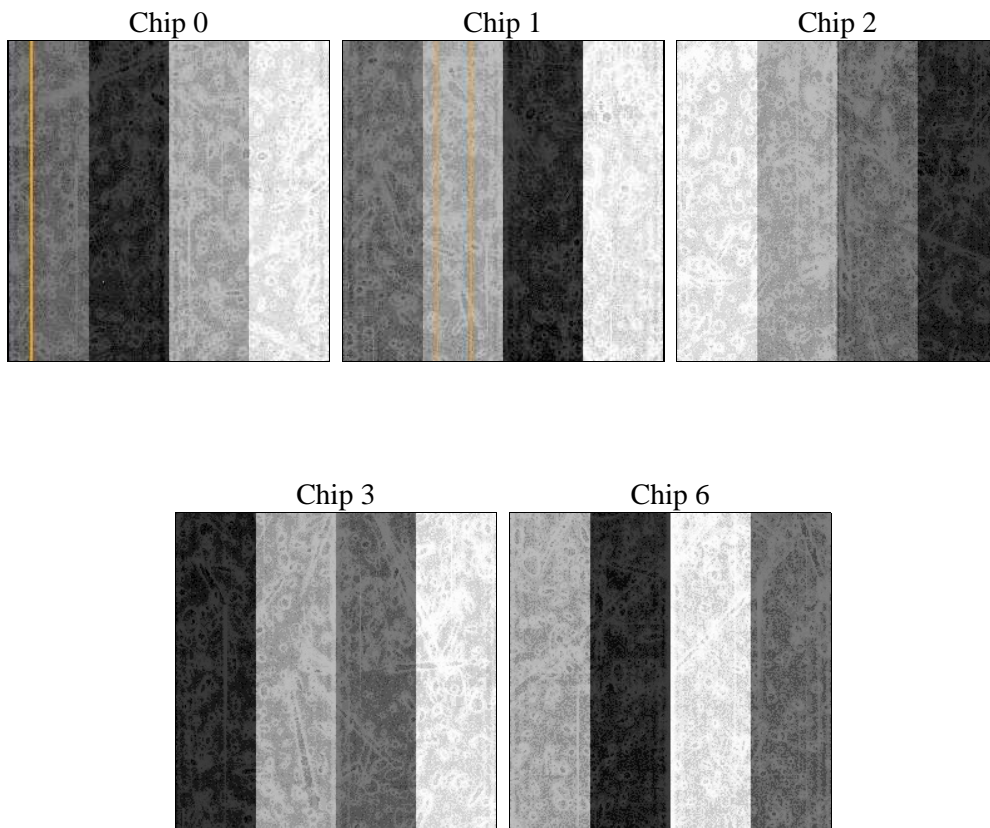
2 OBI

2.1 OBI

2.1.1 Images



2.1.2 Bias



2.1.3 Parameters

obi_num	1	Obi number	sched_exp_time	18000.000000	[s] Scheduled observation exposure time
ascdsver	8.4.5	Processing system revision	ontime	18115.635506243	Sum of GTIs [s]
caldsver	4.5.2	 	ontime0	18106.089455664	Sum of GTIs [s]
date	2012-10-04T19:01:20	Date and time of file creation	ontime1	18112.412485927	Sum of GTIs [s]
revision	3	Processing version of data	ontime2	18115.594466209	Sum of GTIs [s]
			ontime3	18115.635506243	Sum of GTIs [s]
			ontime6	18112.330366015	Sum of GTIs [s]
			l1events	542822	Number of level 1 events

2.1.4 Events

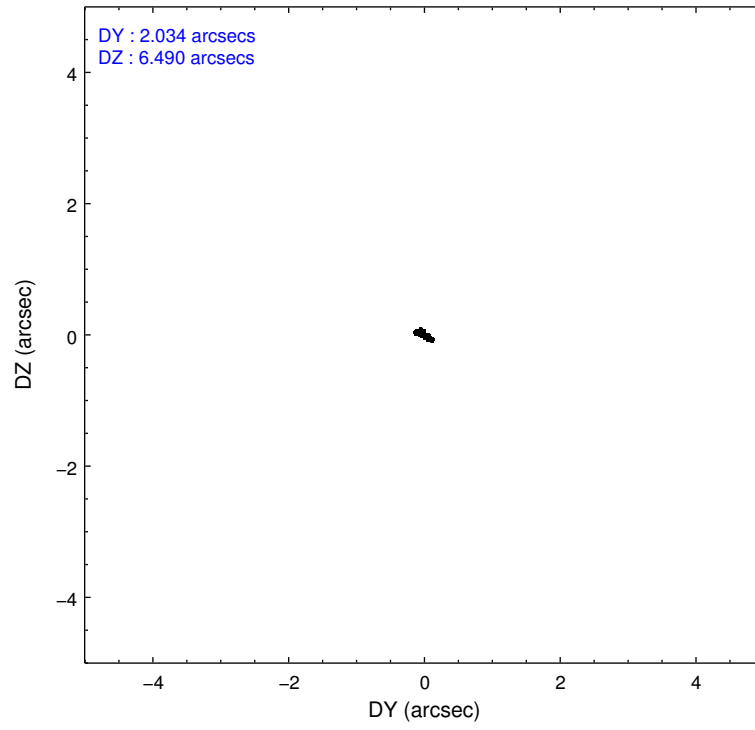
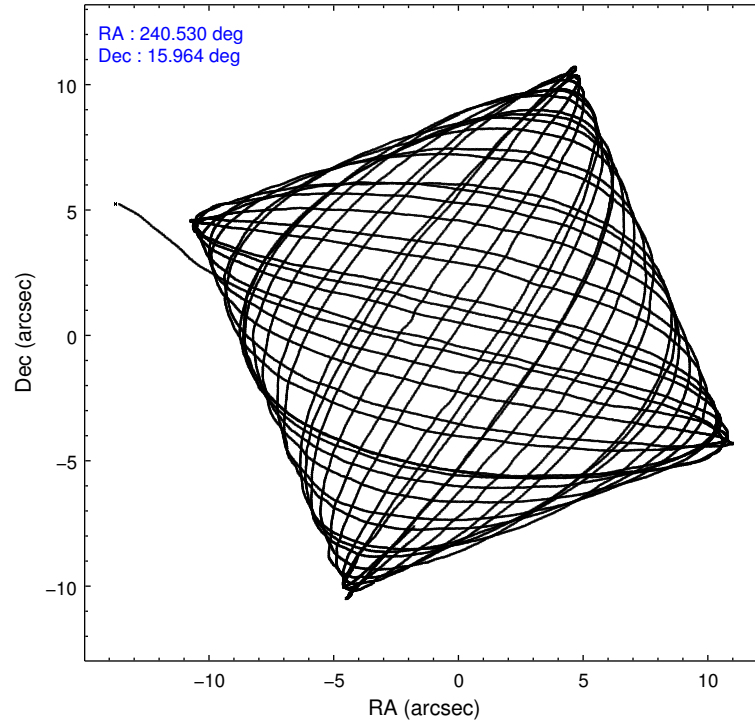
	ccd 0	ccd 1	ccd 2	ccd 3	ccd 6
level 1 events	108295	114767	111425	107691	100644
rejected events	82709	83502	93584	88548	89695
rejected %	76%	72%	83%	82%	89%

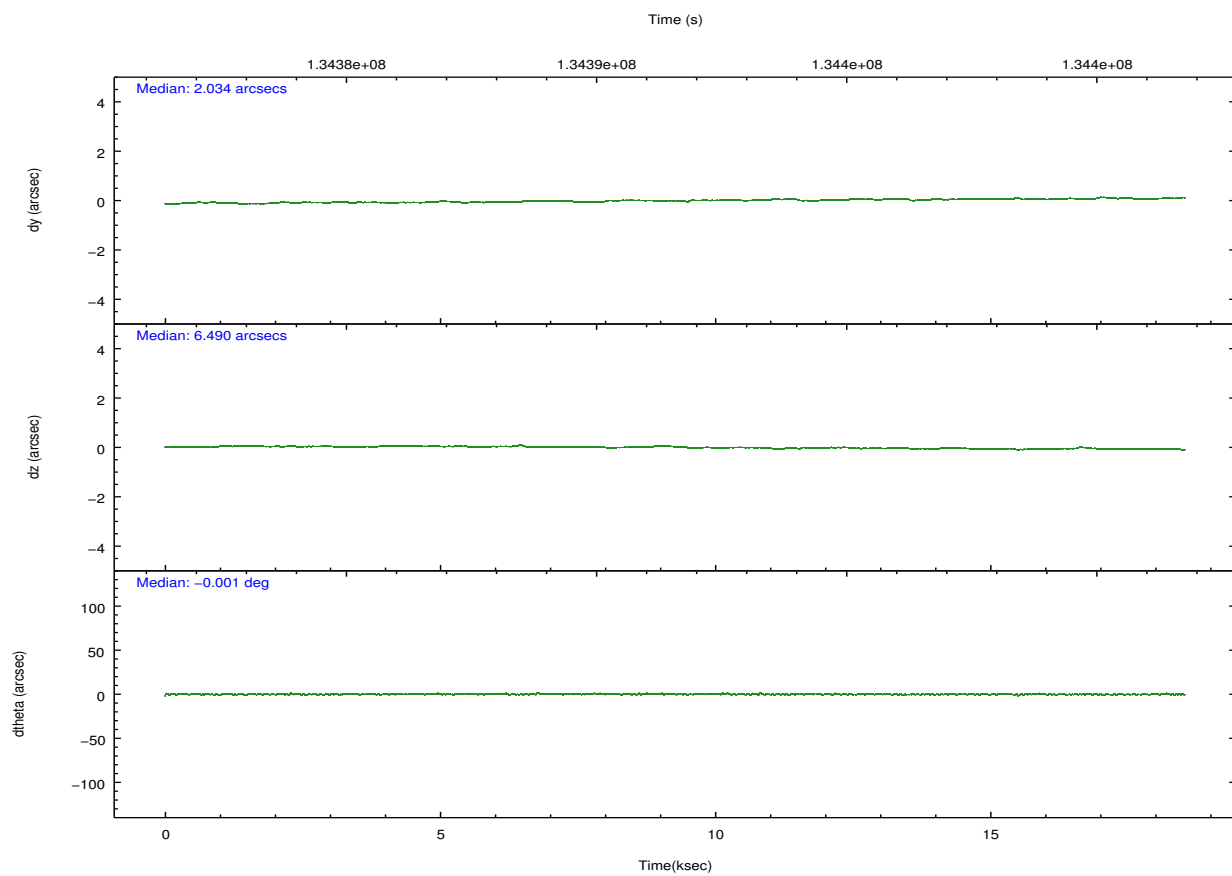
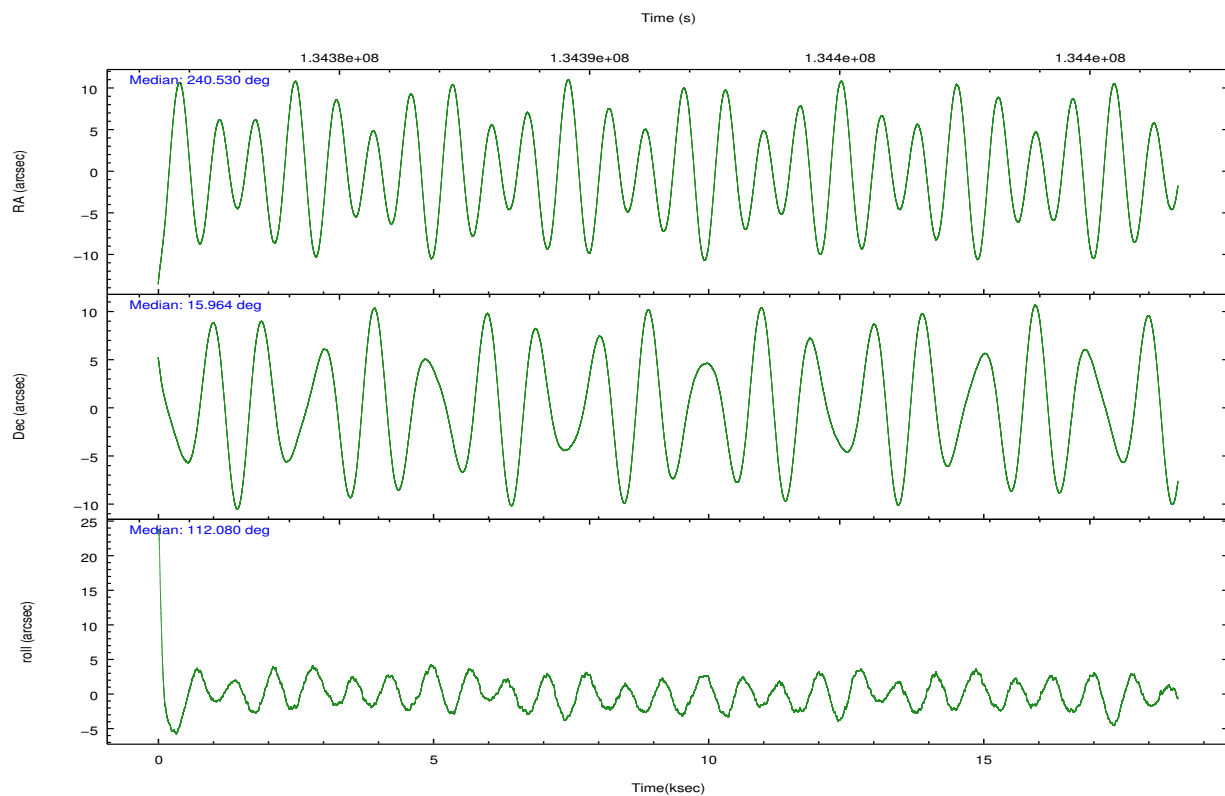
	ccd 0	ccd 1	ccd 2	ccd 3	ccd 6
grade 0 events	16459	20893	10495	11599	4438
	15%	18%	9%	10%	4%
grade 1 events	86	110	80	66	37
	0%	0%	0%	0%	0%
grade 2 events	3671	4138	2939	2852	2152
	3%	3%	2%	2%	2%
grade 3 events	1725	1896	1174	1342	1181
	1%	1%	1%	1%	1%
grade 4 events	1510	1854	1300	1273	1146
	1%	1%	1%	1%	1%
grade 5 events	3075	3529	2960	3554	3628
	2%	3%	2%	3%	3%
grade 6 events	2229	2494	1939	2085	2036
	2%	2%	1%	1%	2%
grade 7 events	79540	79853	90538	84920	86026
	73%	69%	81%	78%	85%

2.2 Compared Parameters

Parameter	Planned	Actual	Parameter	Planned	Actual
Instrument	ACIS	ACIS	Obspar format version number	7	7
Detector	ACIS-01236	ACIS-01236	Obspar file type	PREDICTED	ACTUAL
Grating	NONE	NONE	Obspar update status	NONE	UPDATED
Data mode	VFAINT	VFAINT	Number of optional ACIS chips dropped	0	0
Observation mode	POINTING	POINTING	On-chip summing requested	N	N
[deg] Pointing RA	240.552613	240.5300634716081	Subarray requested	NONE	NONE
[deg] Pointing Dec	15.947895	15.9646526063997	Alternating exposures requested	N	N
[deg] Pointing Roll	111.871577	112.0864707528324	[s] Primary exposure time	0.000000	3.1
[mm] SIM focus pos	-0.782348	-0.7809083437167272			
[mm] SIM defocus	0	0.001439871863259334			
[mm] SIM translation stage pos	-233.592463	-233.5874344608287			
[mm] SIM translation stage offset	0	-0.005018542100998502			
[s] Observation start time (MET)	134382833.184000	134381702.72848			
Observation start date	2002-04-05T08:32:49	2002-04-05T08:15:02			
[s] Observation end time (MET)	134400833.184000	134401294.06677			
Observation end date	2002-04-05T13:32:49	2002-04-05T13:41:34			
Read mode	TIMED	TIMED			

2.3 Aspect



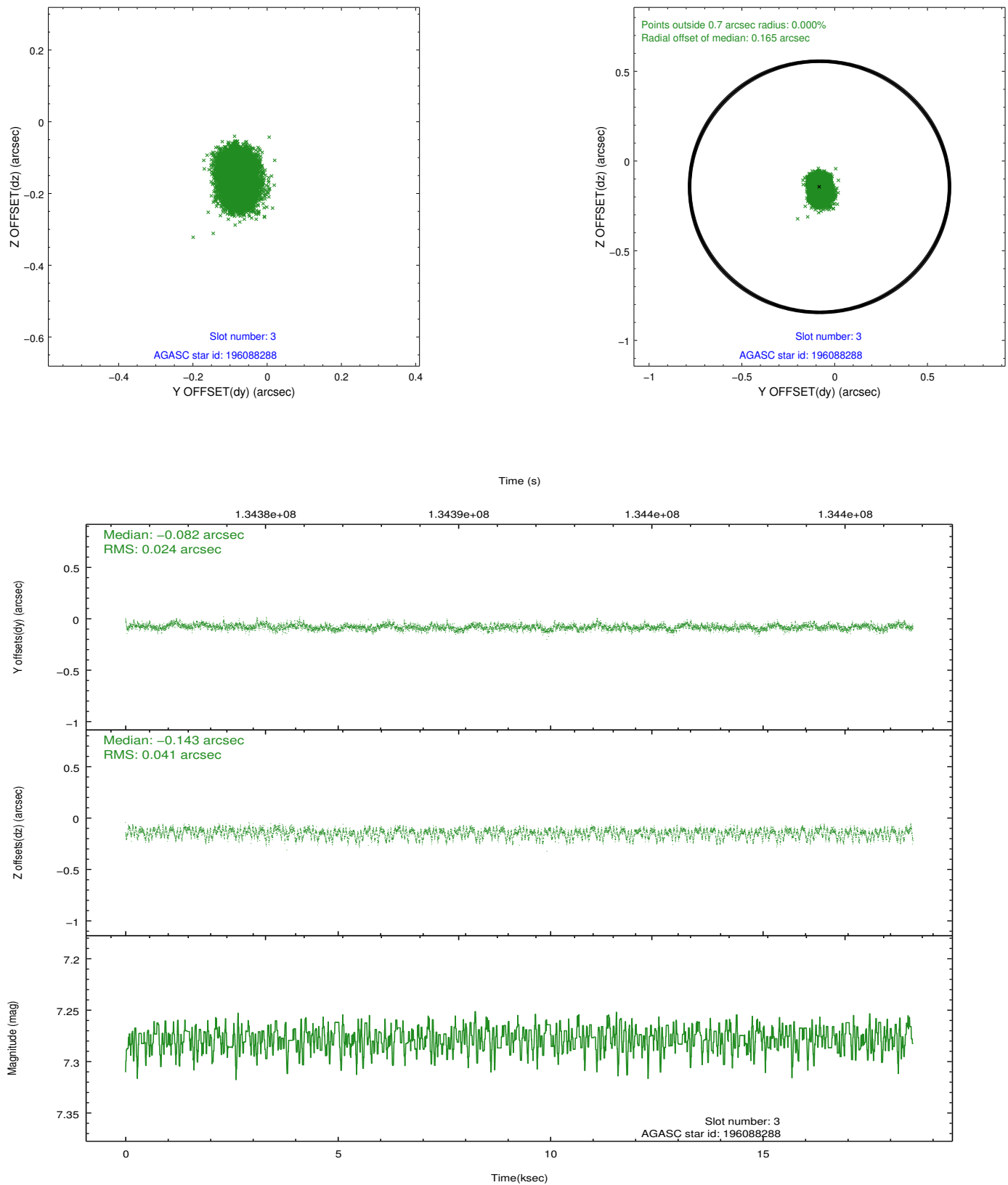


Slot Statistics

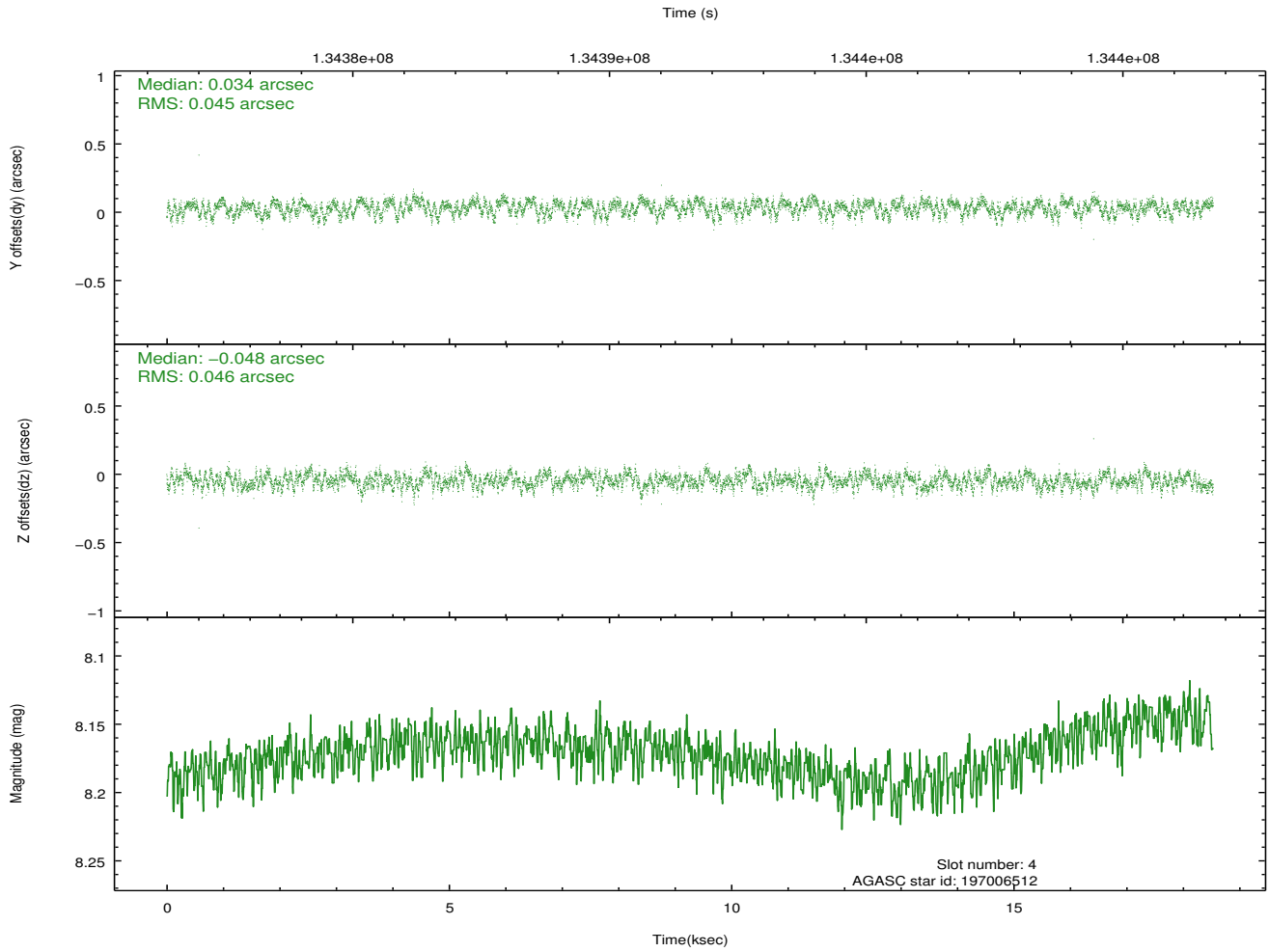
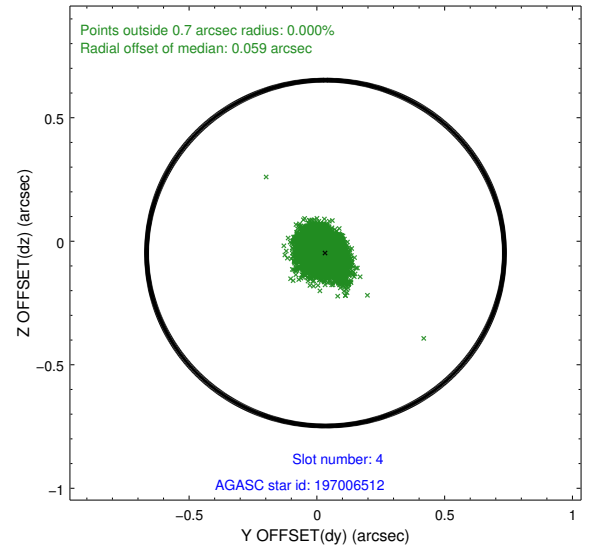
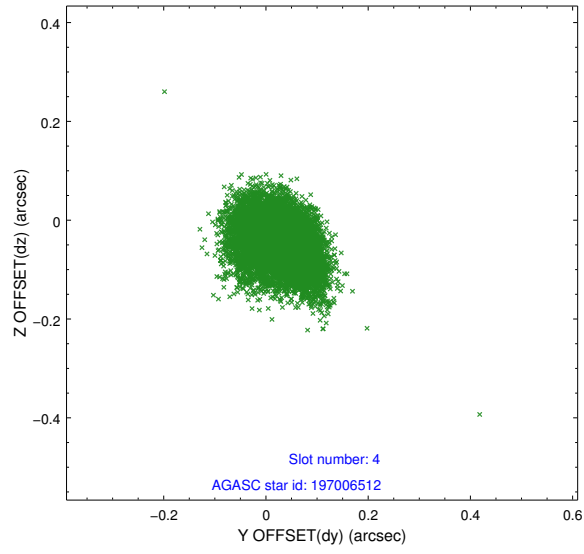
slot	status	id	mag	n_pts	med_dy	med_dz	dr1	dr2	ra	dec	mean_y	mean_z
0	FID	ACIS-I-1	7.25	4521	-0.012	0.018	0.008	0.019	0.000000	0.000000	937.76	-829.87
1	FID	ACIS-I-5	7.24	4521	-0.038	0.042	0.008	0.021	0.000000	0.000000	-1810.21	1067.60
2	FID	ACIS-I-6	7.26	4521	-0.041	0.011	0.009	0.017	0.000000	0.000000	403.10	1712.27
3	GUIDE	196088288	7.28	9042	-0.082	-0.143	0.050	0.086	239.704520	16.211077	1976.92	2364.82
4	GUIDE	197006512	8.17	9040	0.034	-0.048	0.070	0.110	240.098246	15.667420	-348.44	1836.33
5	GUIDE	197005384	8.64	9041	0.064	0.291	0.088	0.133	241.225800	16.021701	-617.26	-2262.40
6	GUIDE	197009616	8.86	9036	0.105	-0.138	0.079	0.129	240.095572	15.546934	-747.49	2006.74
7	GUIDE	196093136	9.38	9035	-0.116	0.040	0.090	0.153	239.823776	16.374626	2367.65	1762.03

2.4 Star Slots

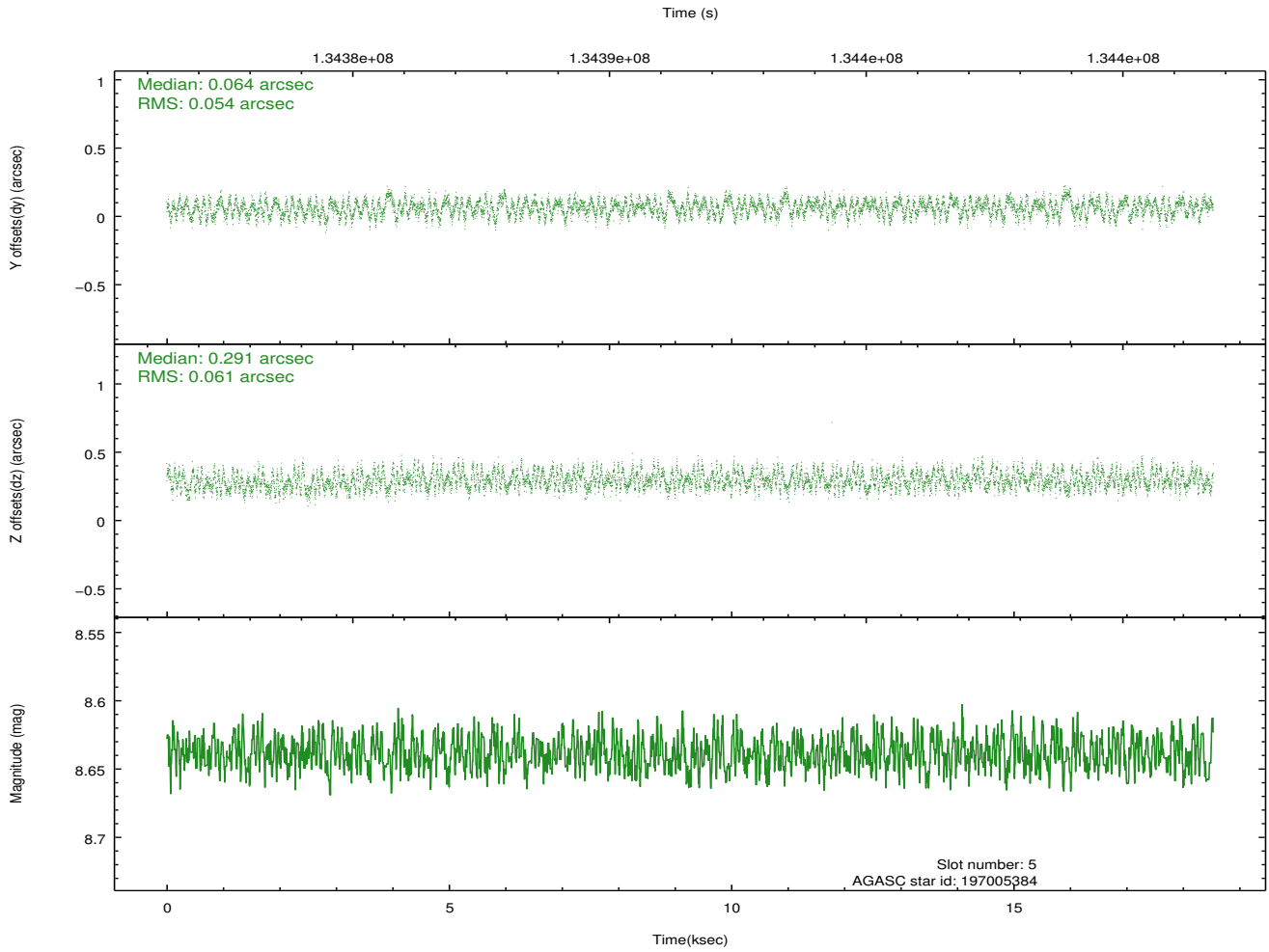
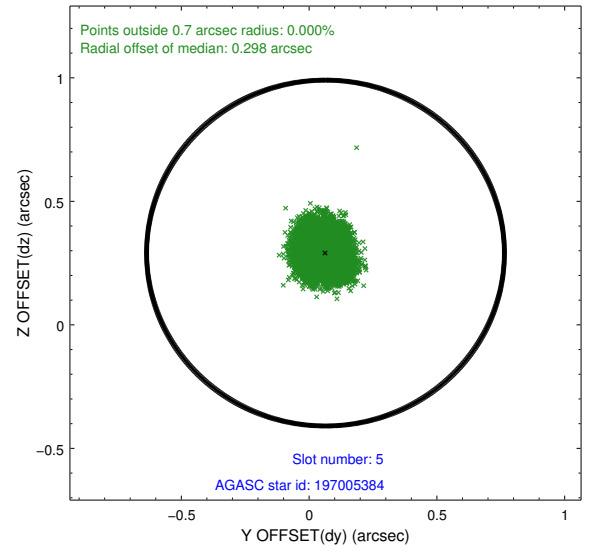
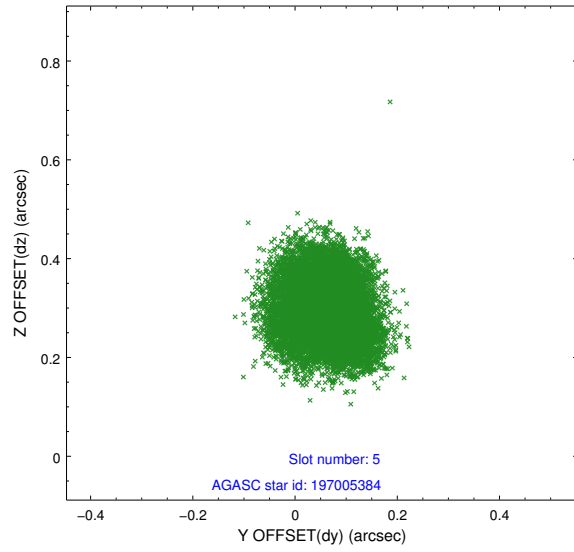
2.4.1 Slot 3



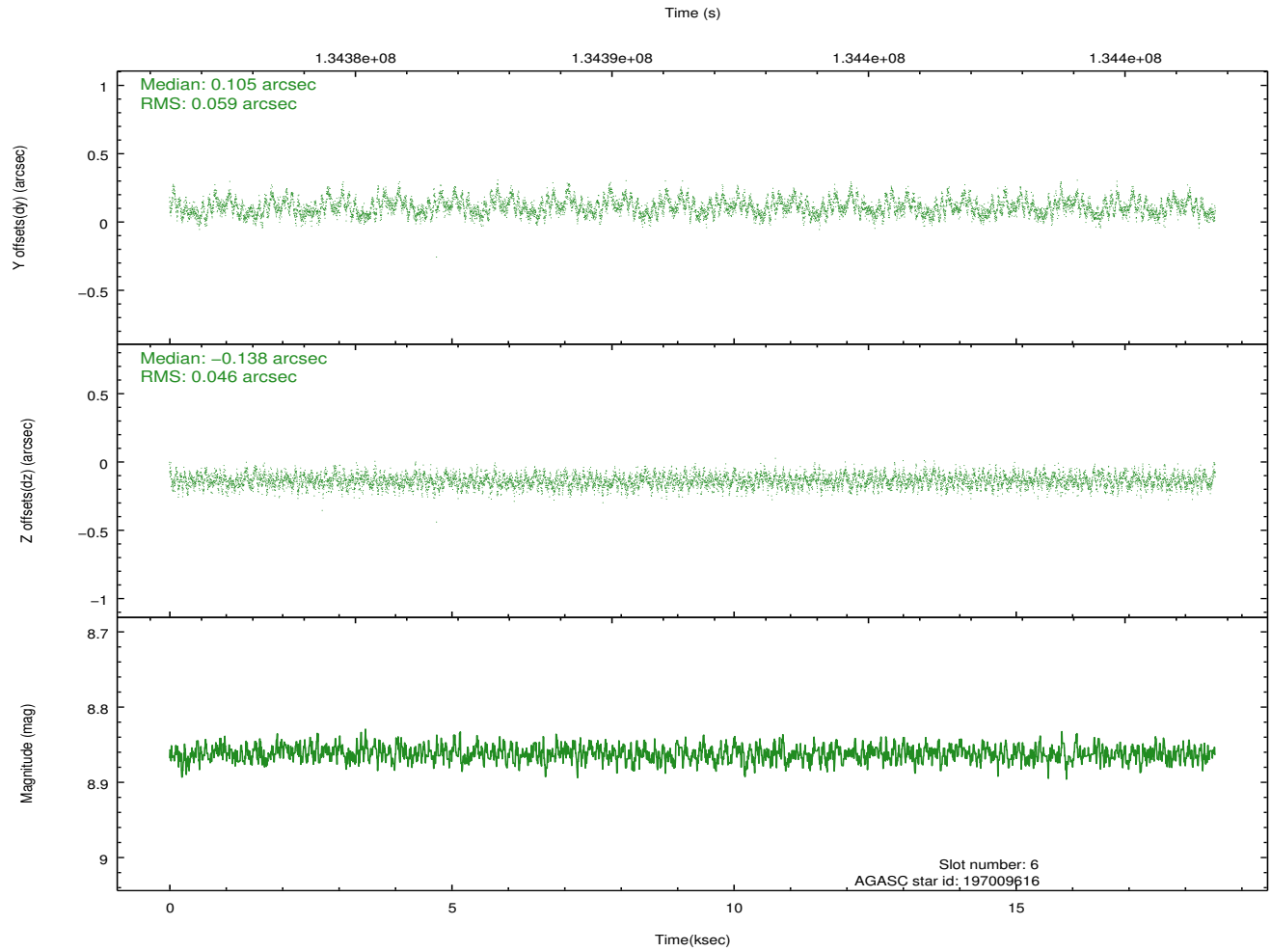
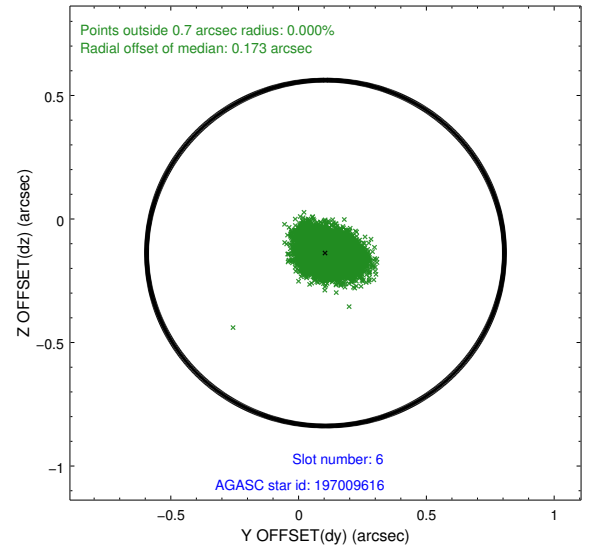
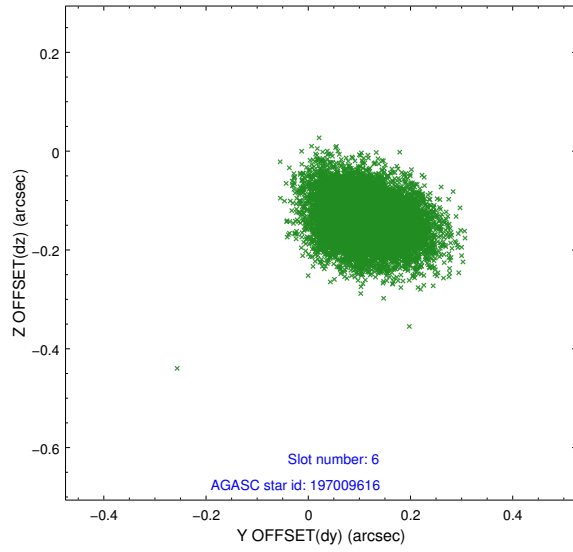
2.4.2 Slot 4



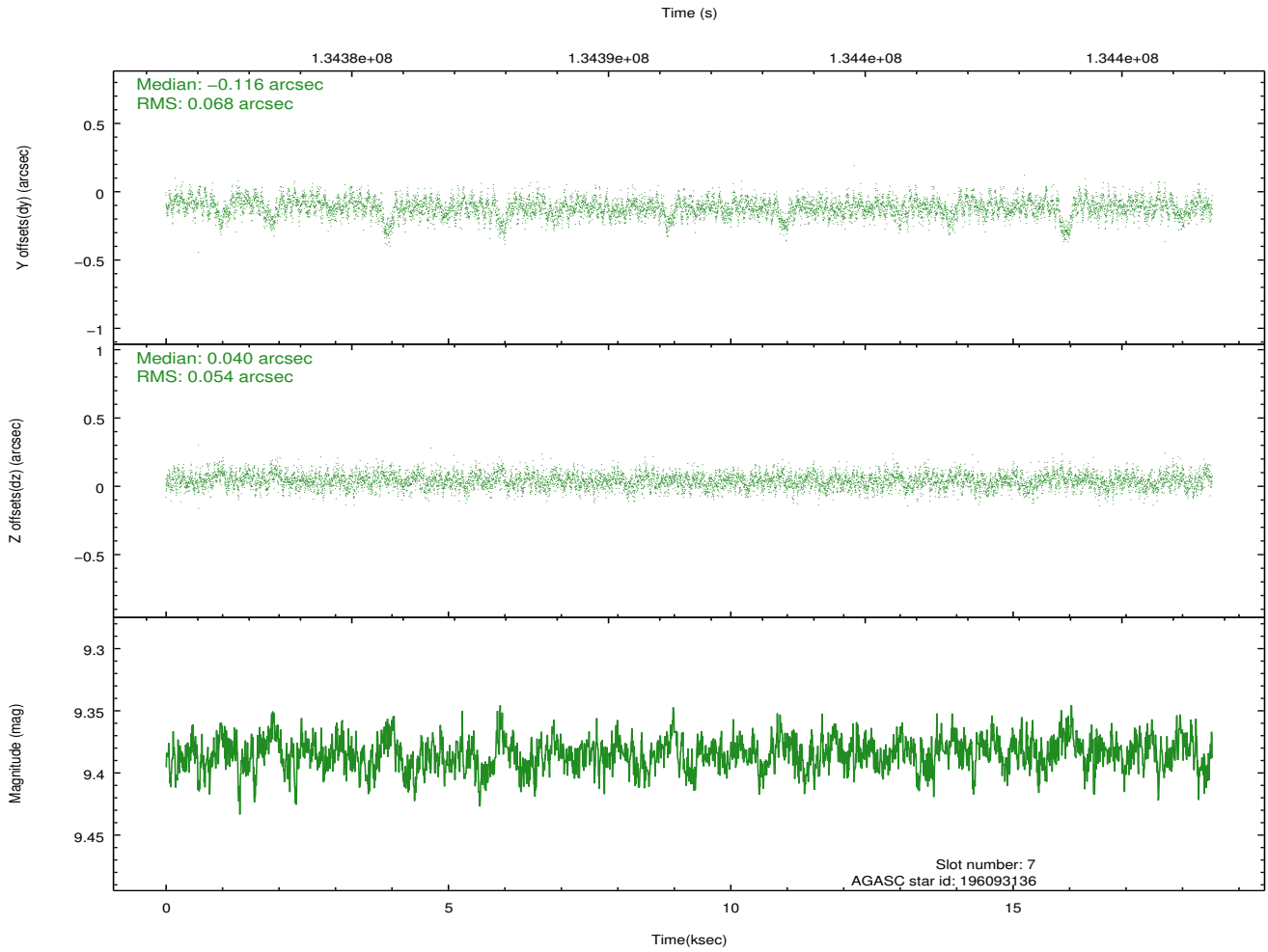
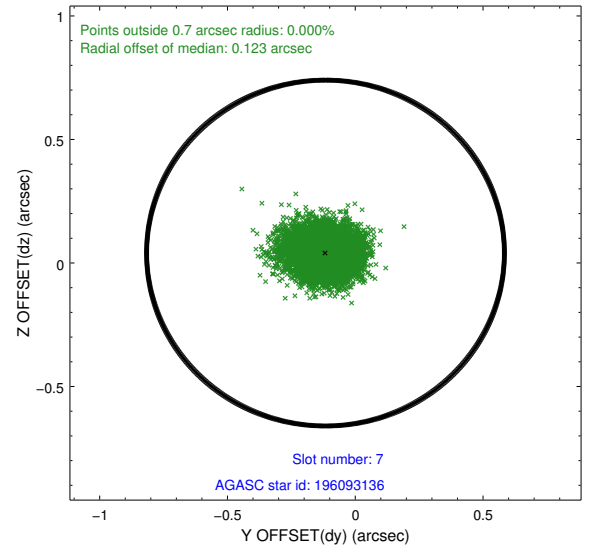
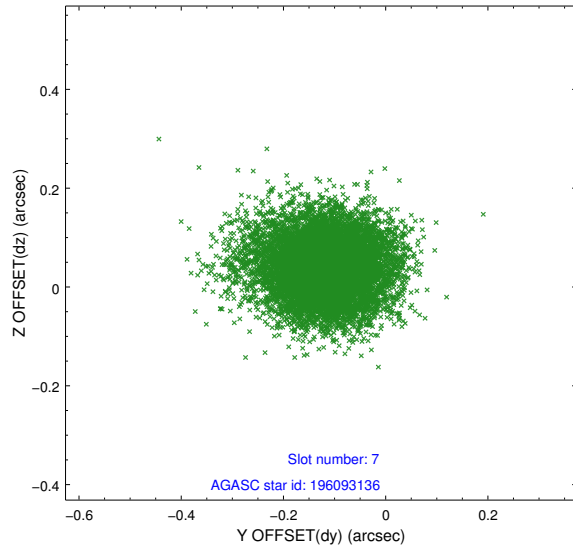
2.4.3 Slot 5



2.4.4 Slot 6

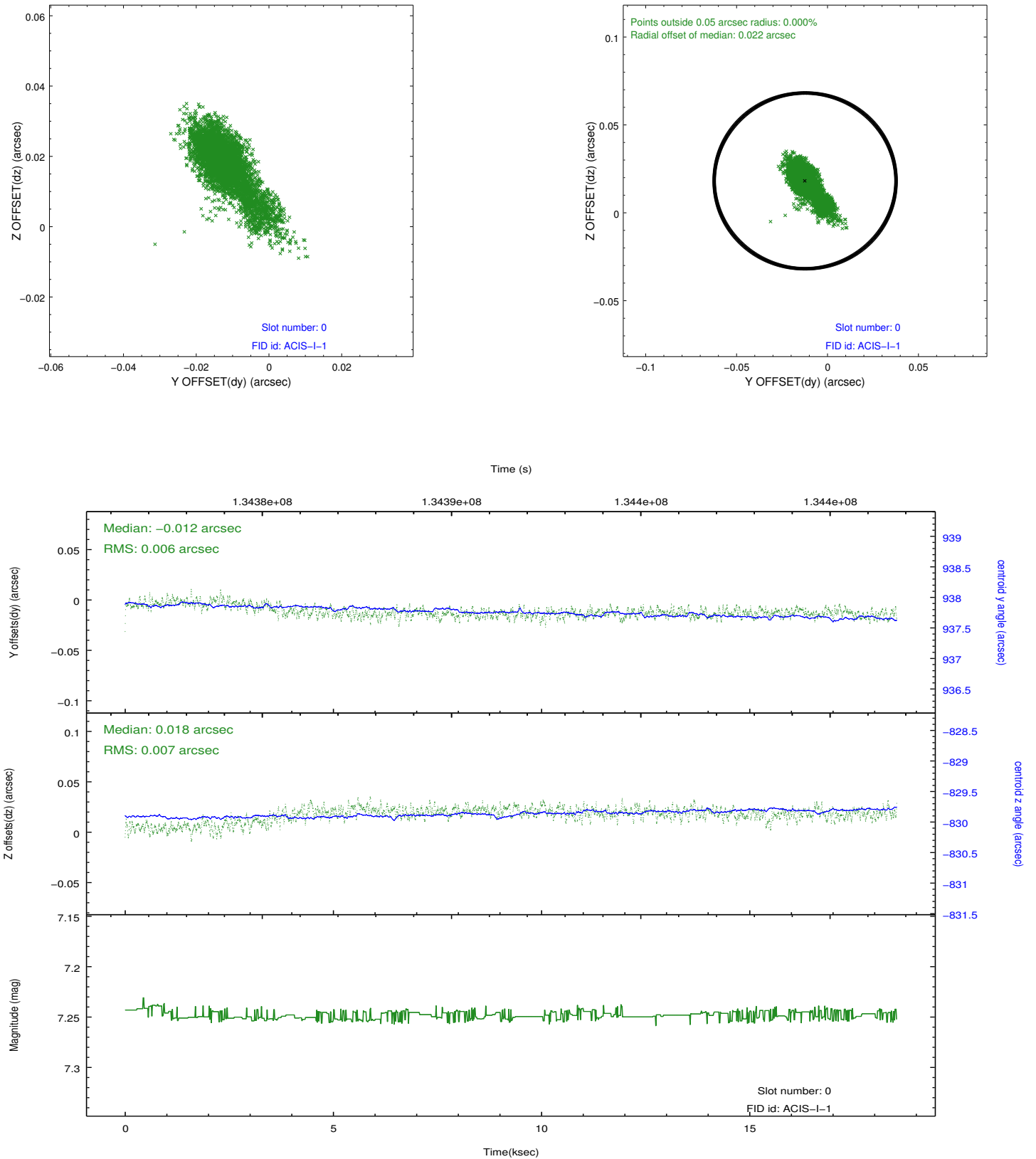


2.4.5 Slot 7

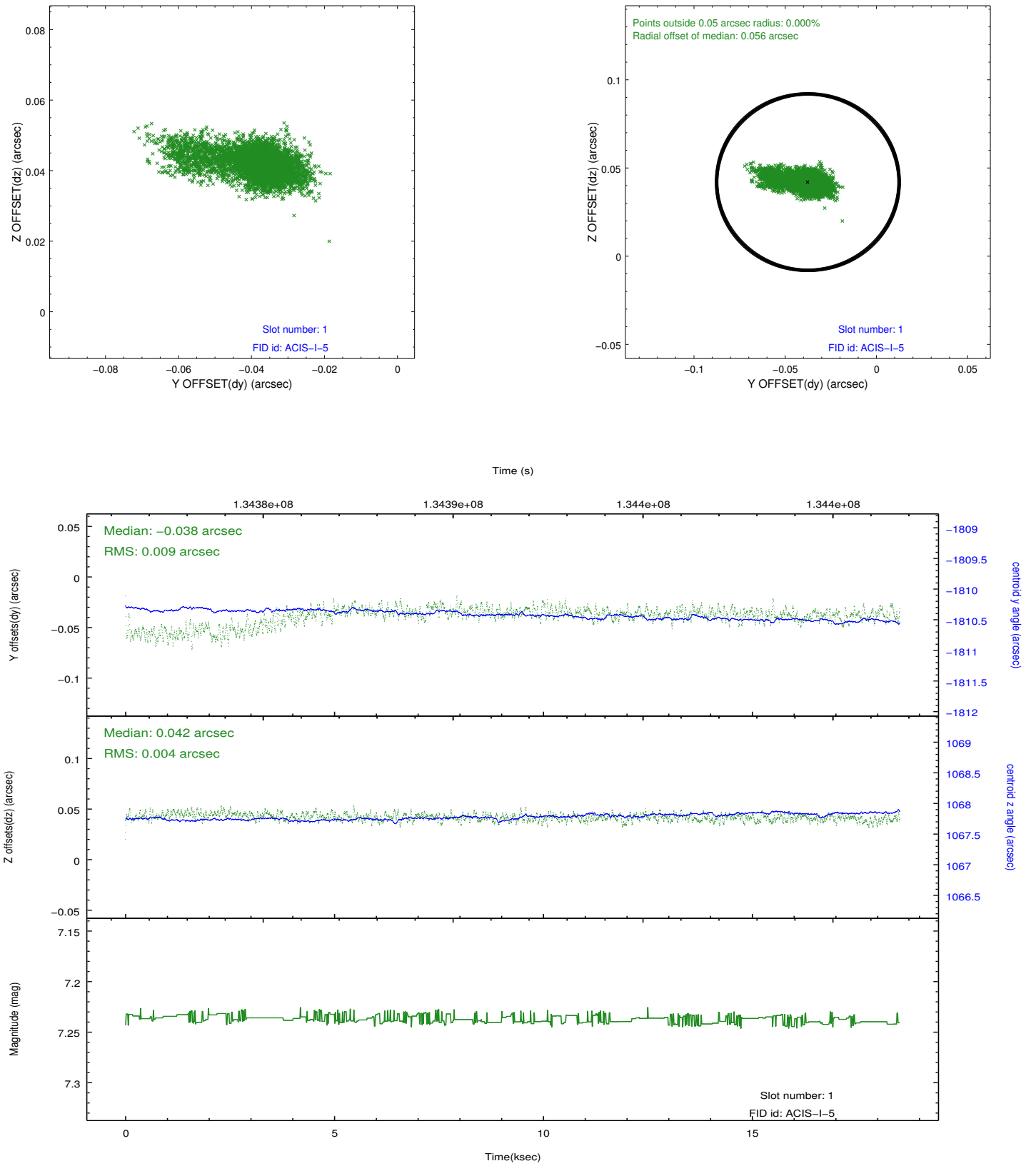


2.5 FID Slots

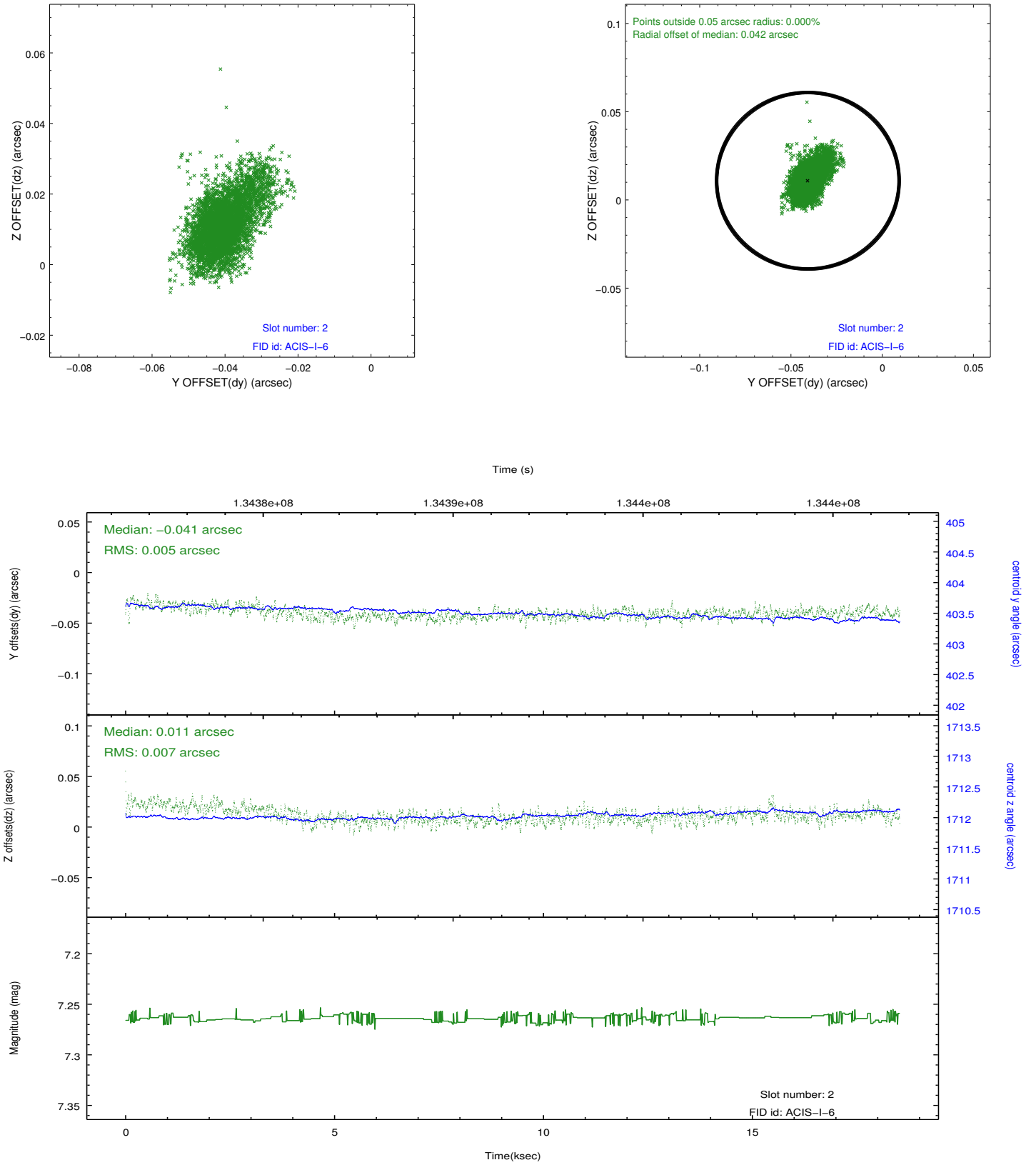
2.5.1 Slot 0



2.5.2 Slot 1



2.5.3 Slot 2



A Summary

A.1 Status

V&V Scientist	Beth Sundheim
V&V Date (YYYY-MM-DD)	2012.10.09
V&V Edition	1
V&V Disposition and Status	OK
V&V Charge Time	18.116

A.2 Comments