

V&V Reference Report

L2 ASCDS Version : 7.6.8.1

Observation 3111 - L2 Version 001
Chandra X-Ray Center

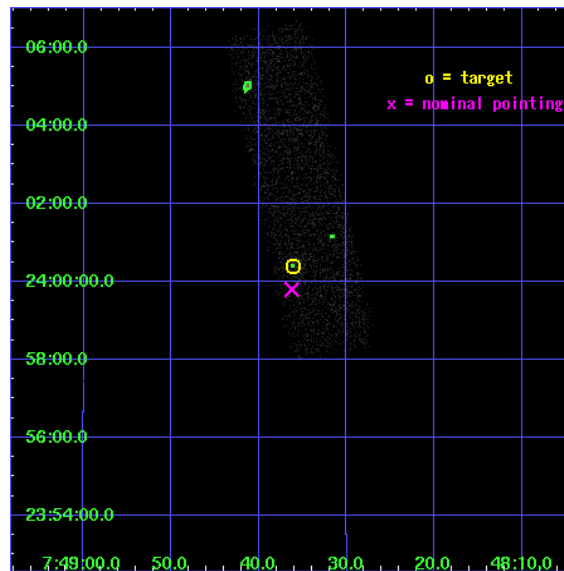
L2 Processing Date : Sep 6 2006

Contents

1	Front	2
2	OBI	3
2.1	OBI	3
2.1.1	Images	3
2.1.2	Bias	3
2.1.3	Parameters	4
2.1.4	Events	4
2.2	Compared Parameters	5
2.3	Aspect	6
2.4	Star Slots	9
2.4.1	Slot 3	9
2.4.2	Slot 4	10
2.4.3	Slot 5	11
2.4.4	Slot 6	12
2.4.5	Slot 7	13
2.5	FID Slots	14
2.5.1	Slot 0	14
2.5.2	Slot 1	15
2.5.3	Slot 2	16
3	Point Sources	17
A	Summary	18
A.1	Status	18
A.2	Comments	18

1 Front

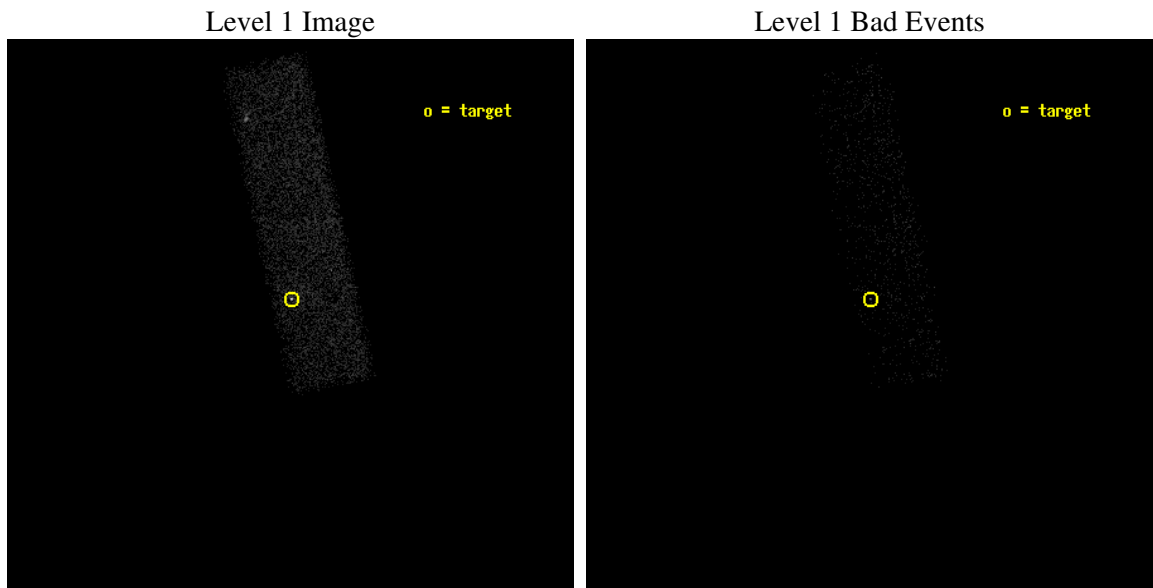
seq_num	700550
obs_id	3111
title	A COMPLETE SURVEY FOR X-RAY EMISSION FROM RADIO JETS
observer	Dr. Herman Marshall
object	0745+241
dtcycle	0
cycle	P
ra_targ	117.150417
dec_targ	24.006694
ra_nom	117.1510780313
dec_nom	23.996645411702
roll_nom	257.48163725052
revision	2
ontime	5276.7999803424
livetime	5019.3094077261
ontime7	5276.7999803424
l2events	5874



2 OBI

2.1 OBI

2.1.1 Images



2.1.2 Bias

Chip 7



2.1.3 Parameters

obi_num	1
ascdsver	7.6.8.1
caldbver	3.2.3
date	2006-09-06T11:21:25
revision	2

sched_exp_time	5000.000000
ontime	5830.8581759334
ontime7	5830.8581759334
l1events	13640

2.1.4 Events

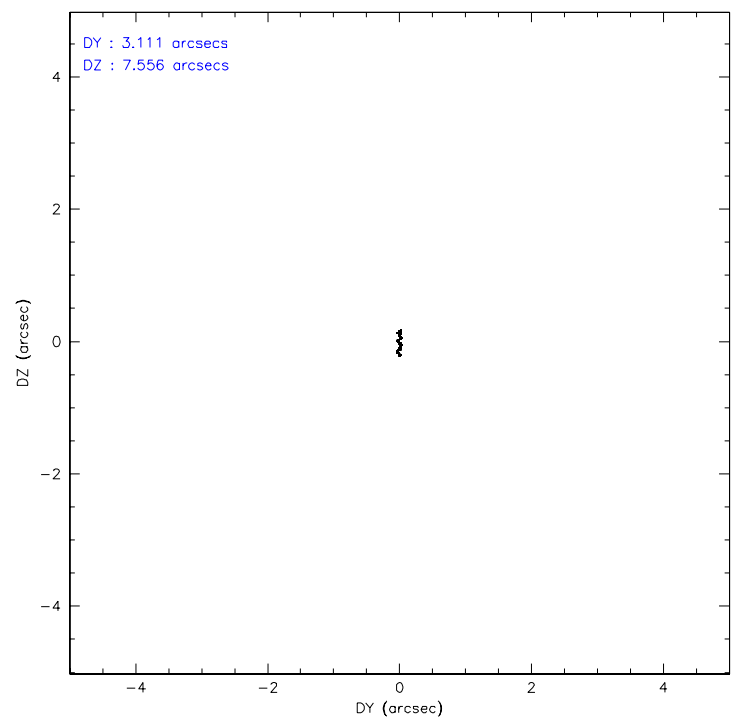
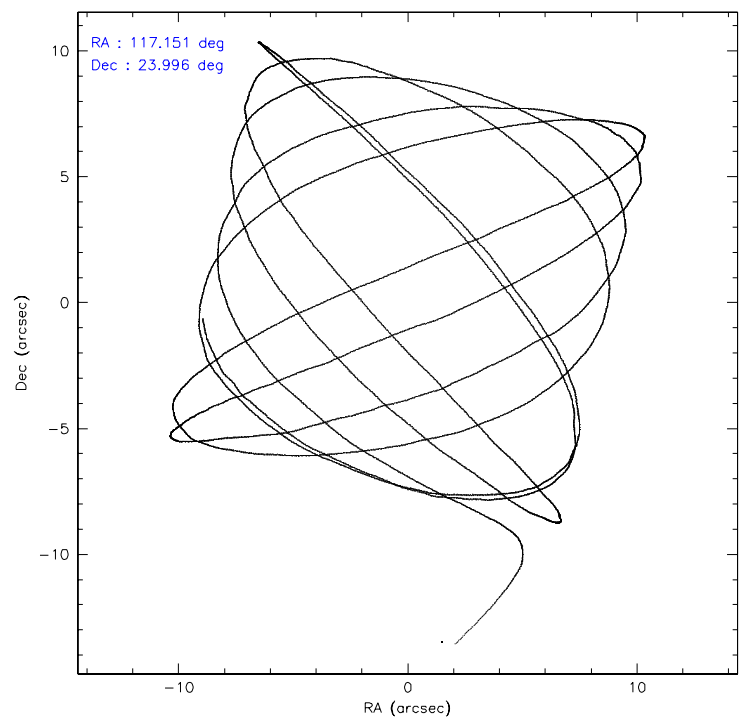
	ccd 7
level 1 events	13640
rejected events	7632
rejected %	55%

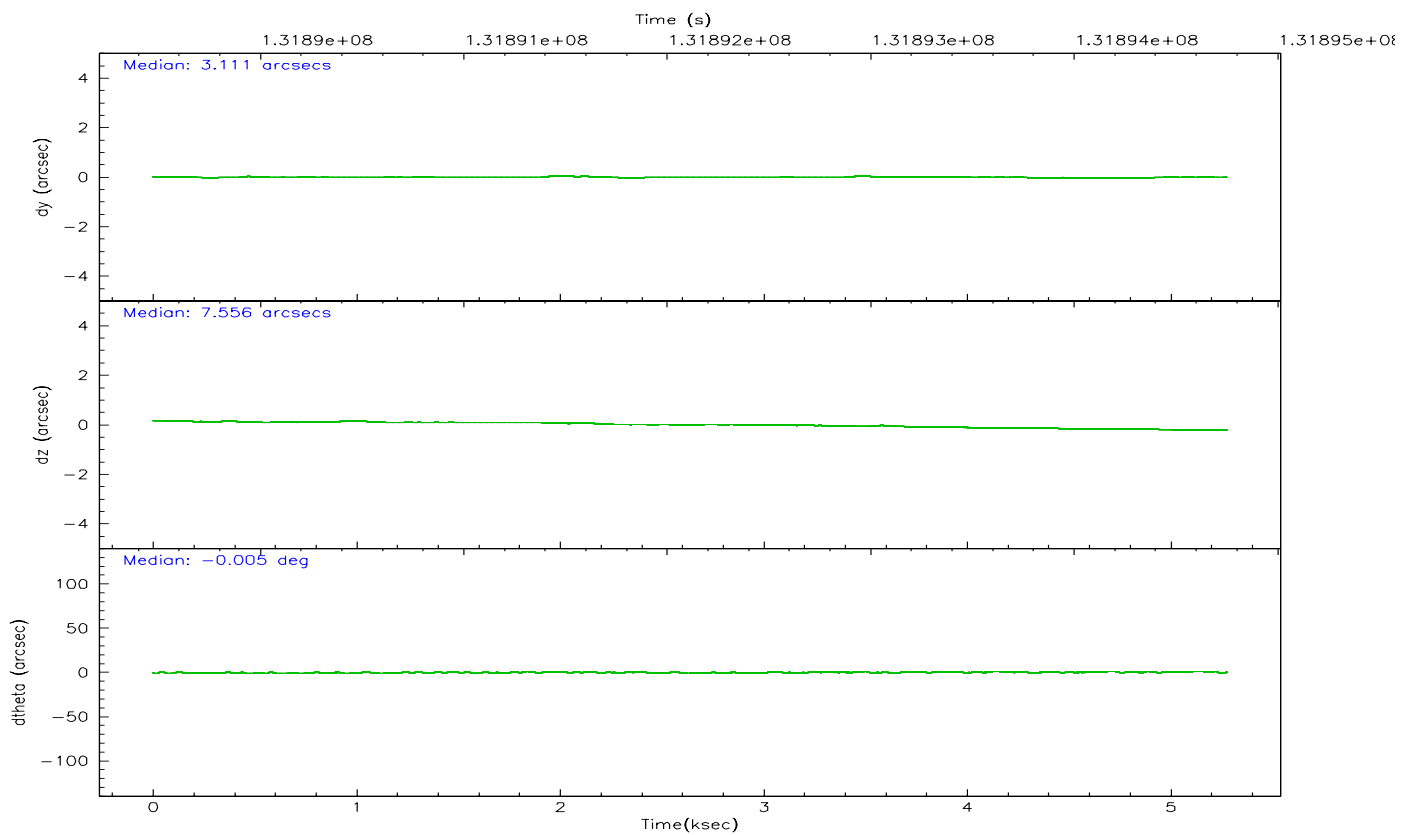
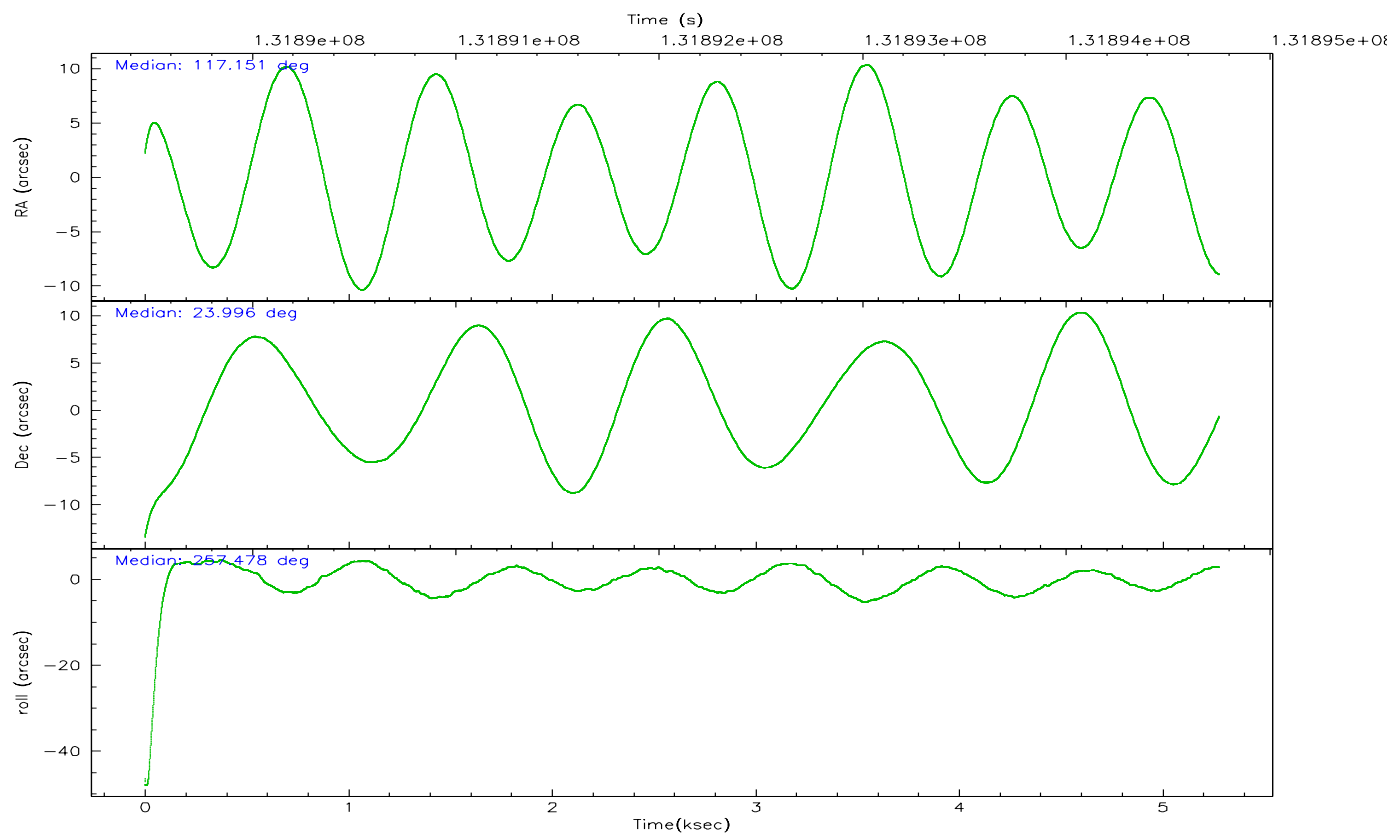
	ccd 7
grade 0 events	685
	5%
grade 1 events	8
	0%
grade 2 events	1448
	10%
grade 3 events	638
	4%
grade 4 events	574
	4%
grade 5 events	964
	7%
grade 6 events	3223
	23%
grade 7 events	6100
	44%

2.2 Compared Parameters

Parameter	Planned	Actual	Parameter	Planned	Actual
Instrument	ACIS	ACIS	Obspar format version number	6	6
Detector	ACIS-7	ACIS-7	Obspar file type	PREDICTED	ACTUAL
Grating	NONE	NONE	Obspar update status	NONE	UPDATED
Data mode	FAINT	FAINT	On-chip summing requested	N	N
Observation mode	POINTING	POINTING	Subarray requested	CUSTOM	1/4
Pointing RA	117.141749	117.151078031299	Subarray start row	1	1
Pointing Dec	24.022652	23.99664541170219	Subarray row count	256	256
Pointing Roll	257.328922	257.4816372505219	Alternating exposures requested	N	N
SIM focus pos (mm)	-0.684267	-0.6828225247311905	Primary exposure time	0.000000	0.8
SIM defocus (mm)	0	0.001444936568705701			
SIM translation stage pos (mm)	-178.632523	-178.6370735452349			
SIM translation stage offset (mm)	-11.5	-11.49544903777291			
Observation start time	131889747.184000	131888724.78996			
Observation start date	2002-03-07T12:01:23	2002-03-07T11:45:24			
Observation end time	131894747.184000	131895404.20273			
Observation end date	2002-03-07T13:24:43	2002-03-07T13:36:44			
Read mode	TIMED	TIMED			

2.3 Aspect



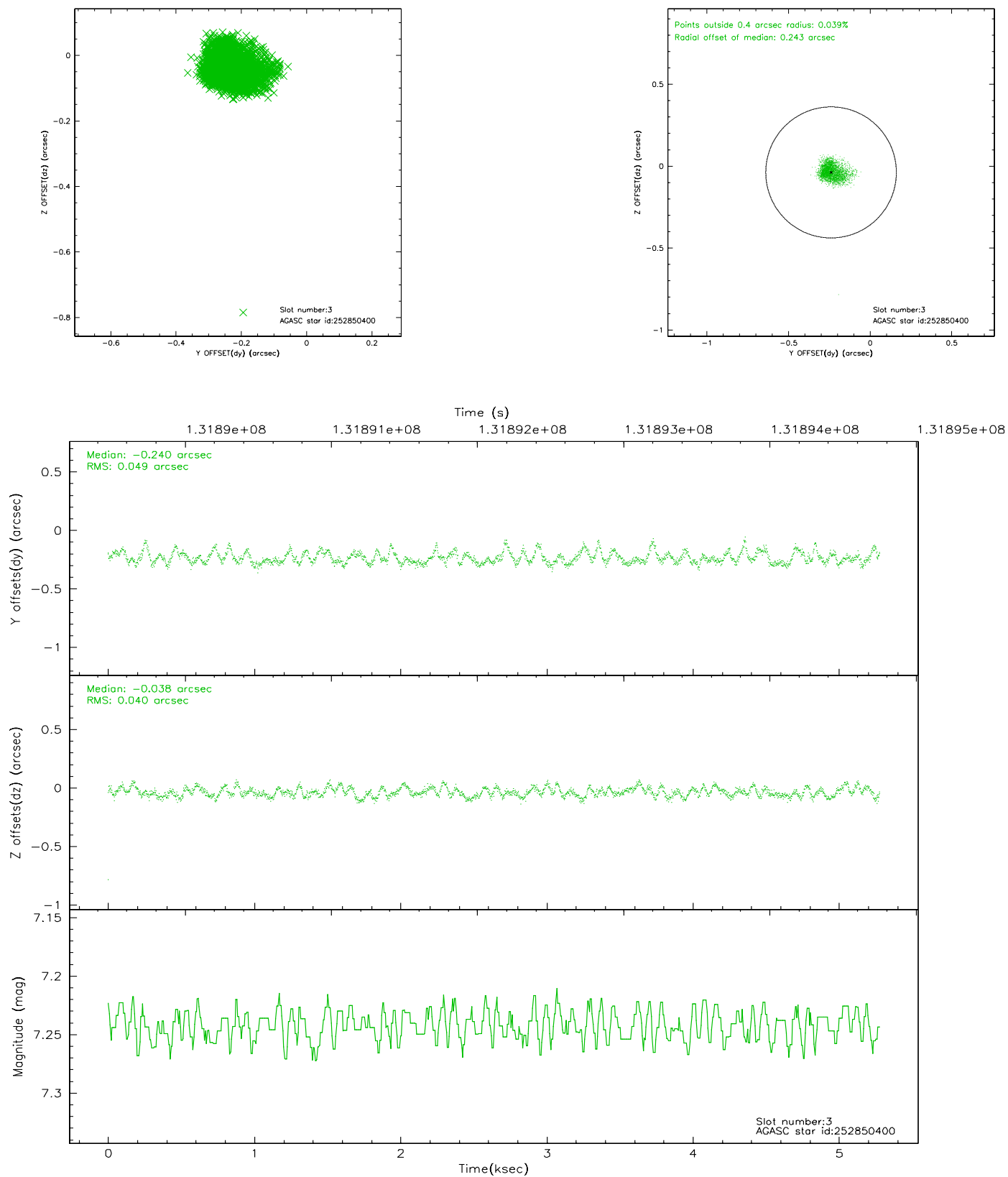


Slot Statistics

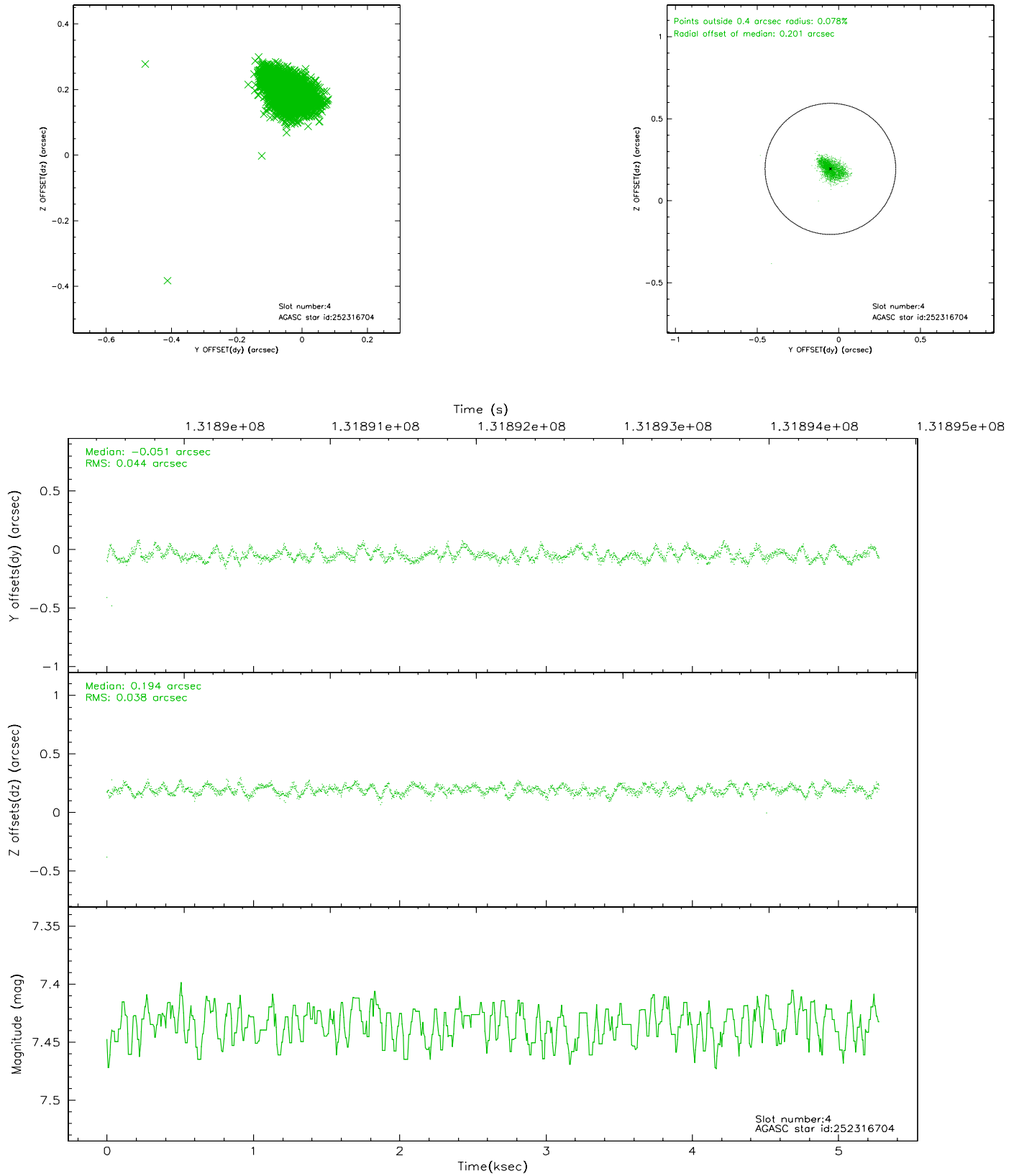
slot	status	id	mag	n_pts	med_dy	med_dz	dr1	dr2	ra	dec	mean_y	mean_z
0	FID	ACIS-S-2	7.08	1288	-0.059	-0.274	0.007	0.011	0.000000	0.000000	-754.92	-1965.66
1	FID	ACIS-S-4	7.18	1288	-0.057	0.101	0.005	0.009	0.000000	0.000000	2157.80	-58.14
2	FID	ACIS-S-5	7.23	1288	0.084	0.180	0.006	0.011	0.000000	0.000000	-1806.18	-63.15
3	GUIDE	252850400	7.24	2576	-0.240	-0.038	0.064	0.108	117.328551	24.488727	-1772.96	228.74
4	GUIDE	252316704	7.43	2576	-0.051	0.194	0.060	0.095	117.665665	24.161024	-868.63	1569.39
5	GUIDE	250625536	7.44	2576	0.076	-0.090	0.047	0.079	116.787491	23.663707	1514.18	-855.71
6	GUIDE	250617704	8.19	2575	0.158	-0.153	0.077	0.132	116.542992	23.548677	2093.87	-1554.75
7	GUIDE	252322272	8.43	2575	0.054	0.091	0.049	0.078	117.378084	23.281366	2431.21	1347.66

2.4 Star Slots

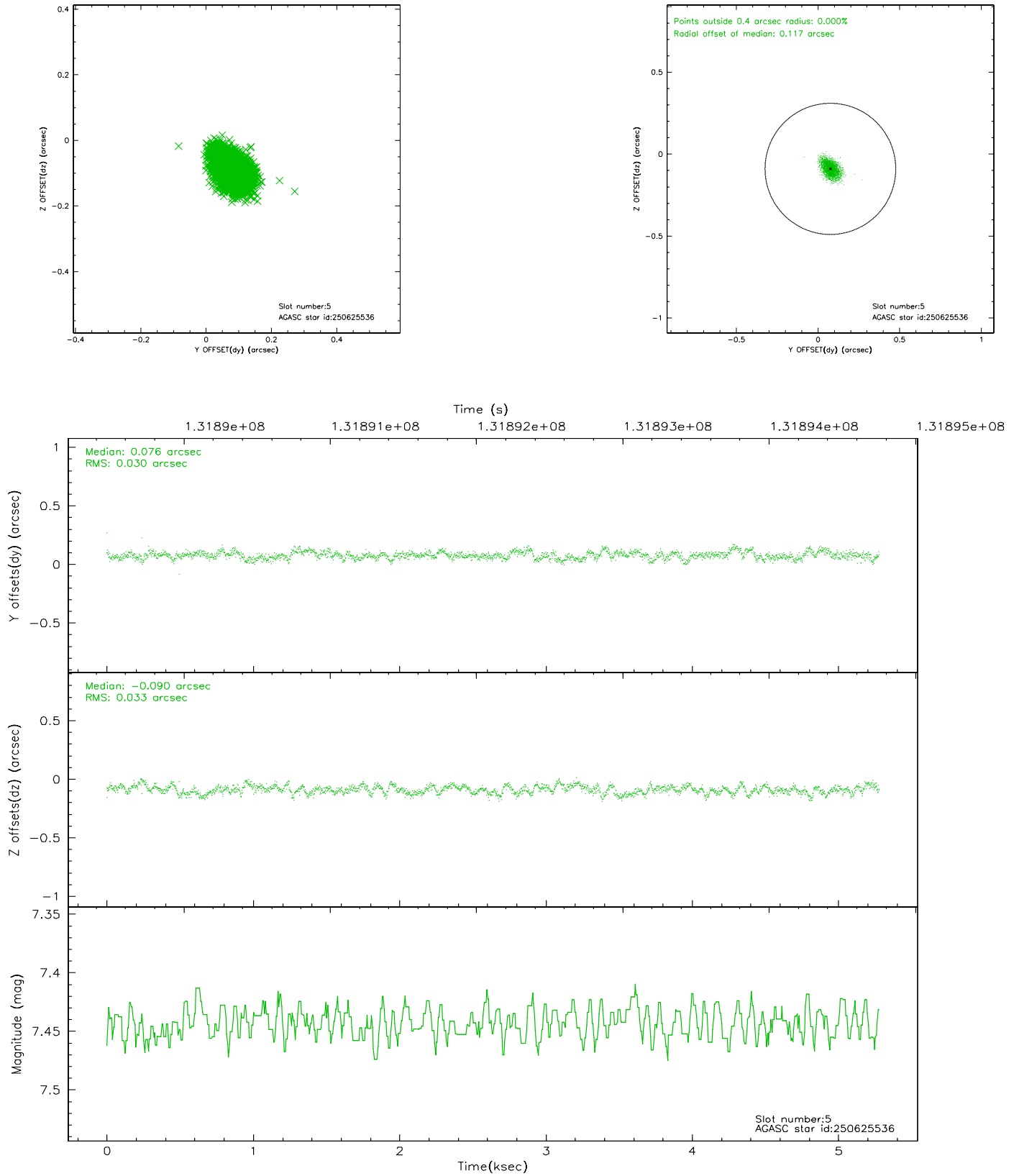
2.4.1 Slot 3



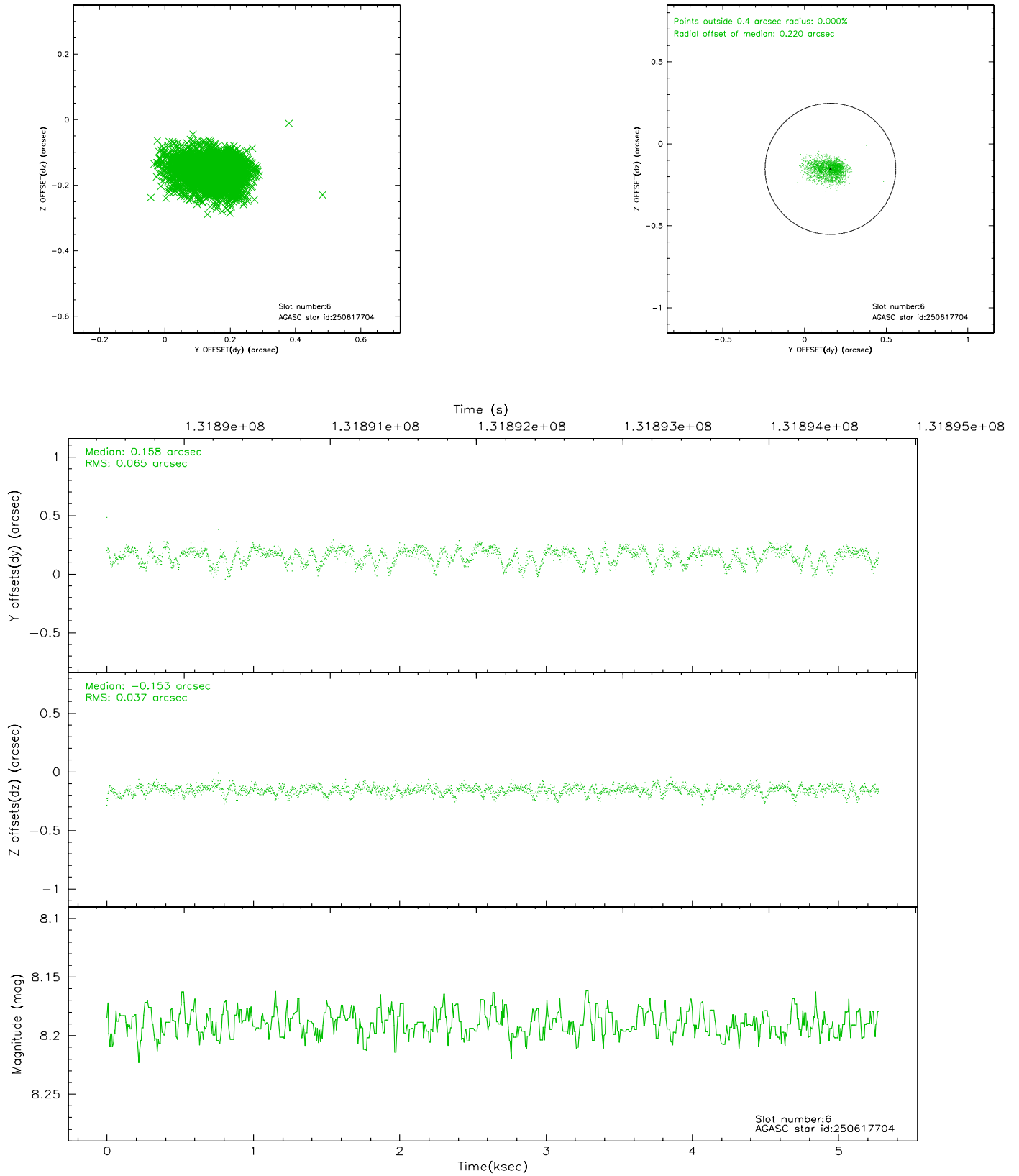
2.4.2 Slot 4



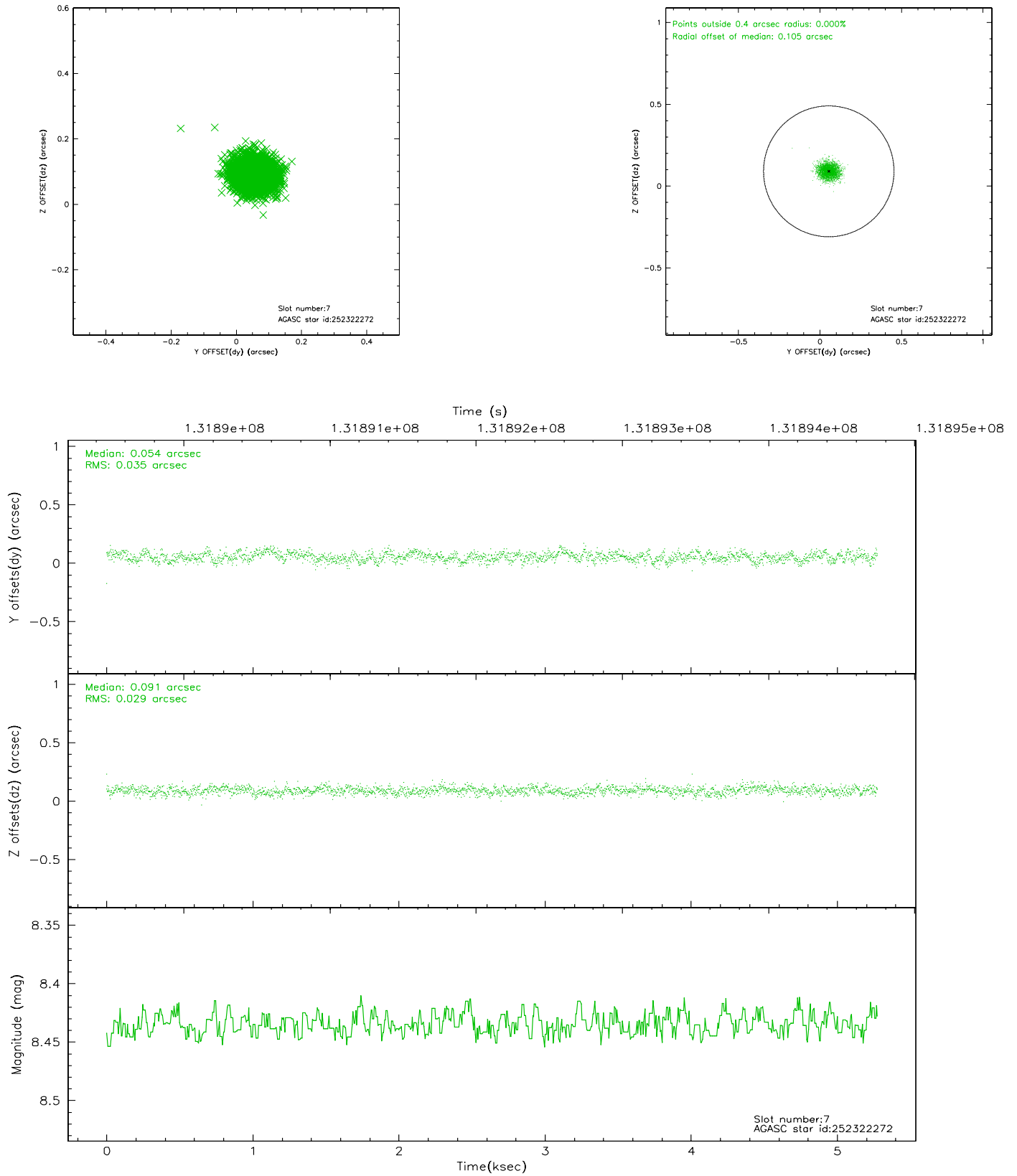
2.4.3 Slot 5



2.4.4 Slot 6

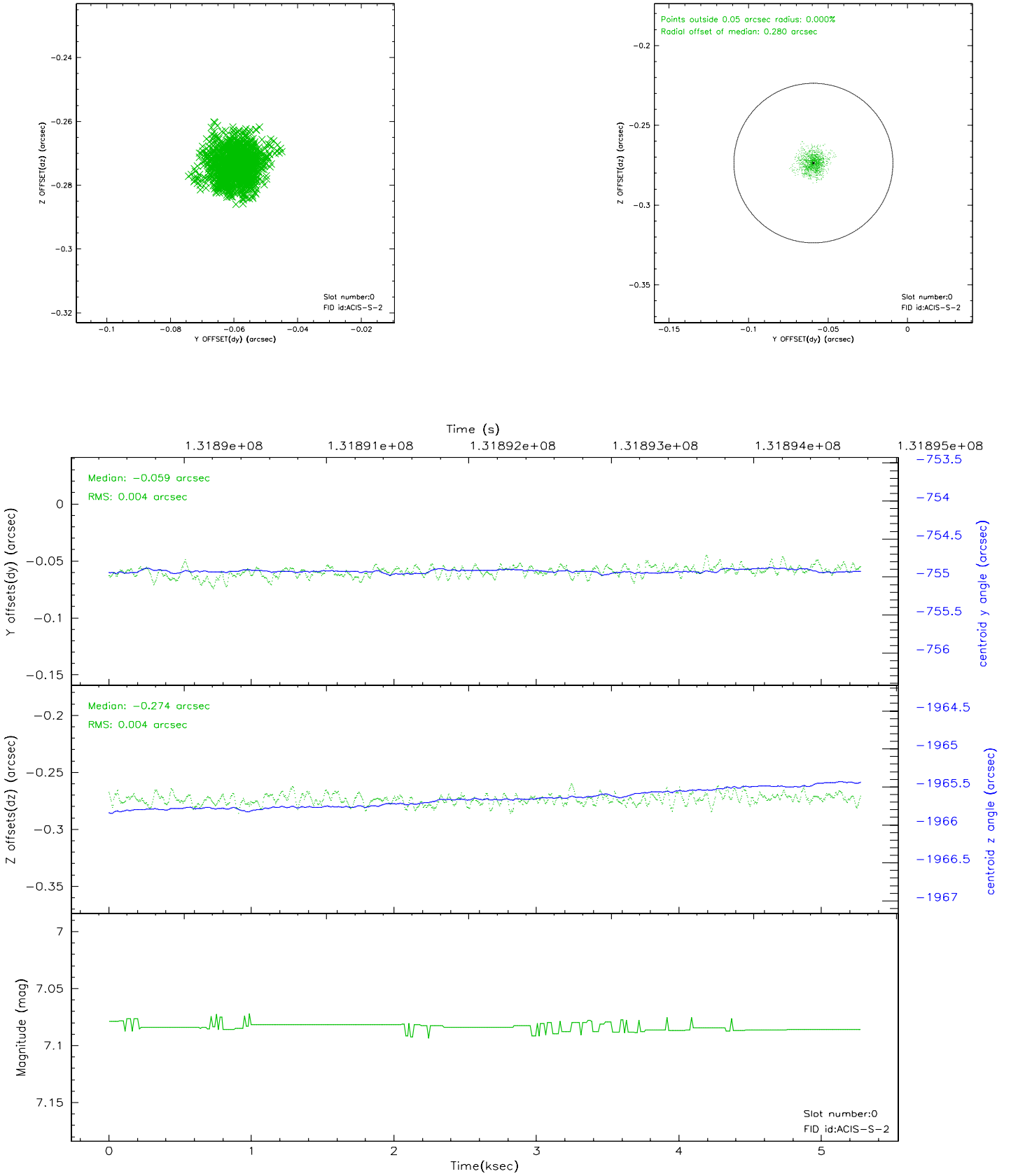


2.4.5 Slot 7

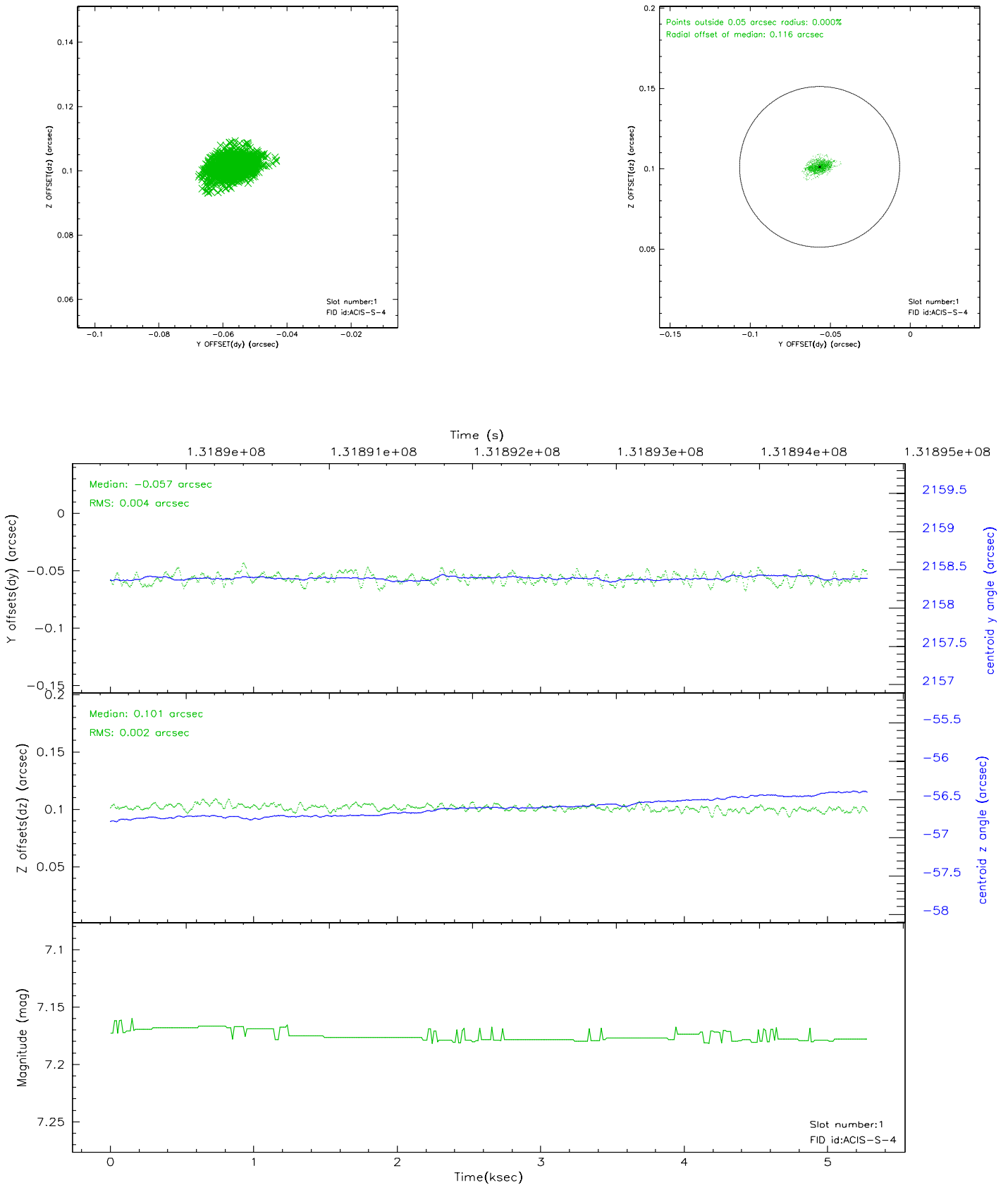


2.5 FID Slots

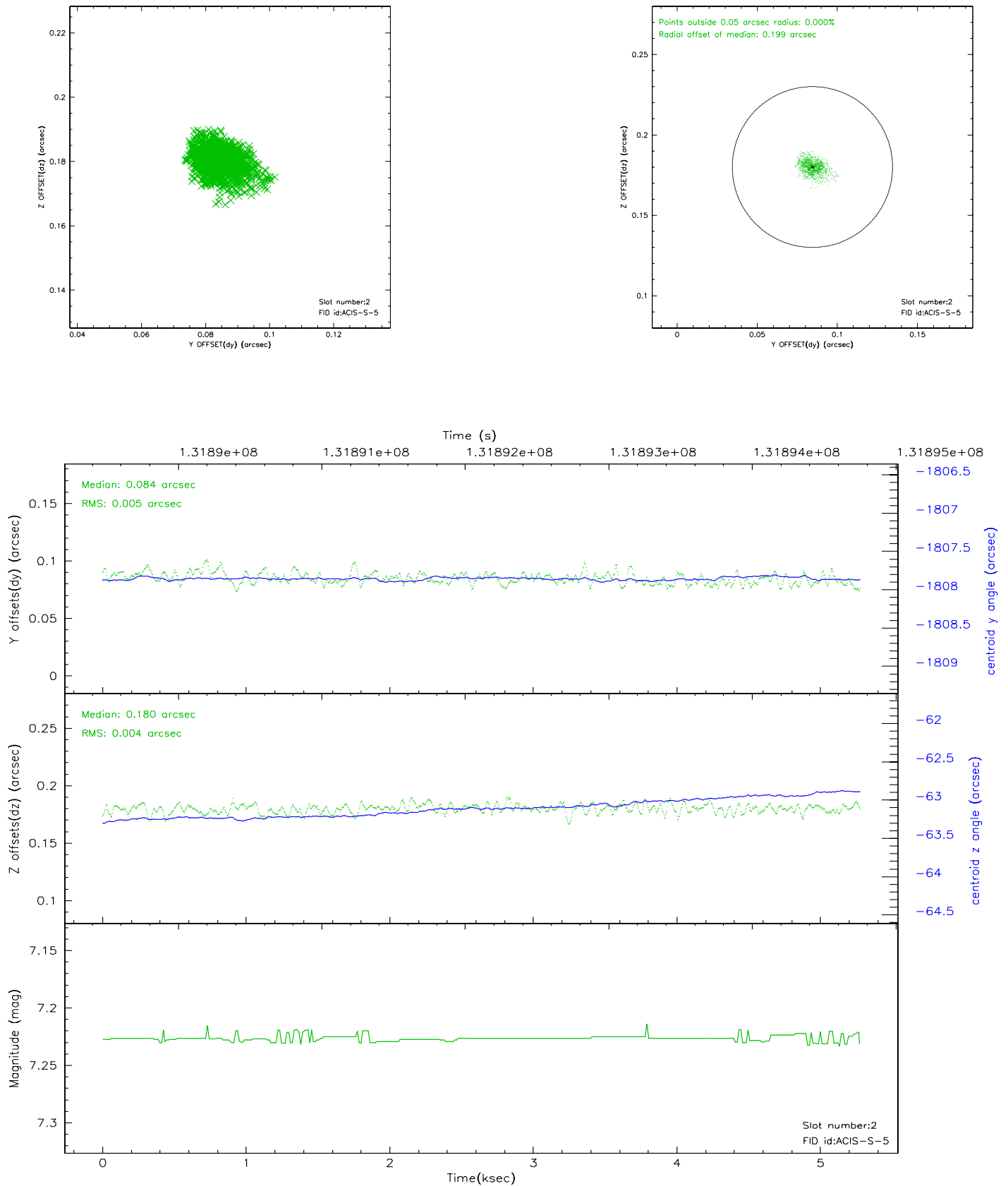
2.5.1 Slot 0



2.5.2 Slot 1



2.5.3 Slot 2



3 Point Sources

5.33 arcmin



A Summary

A.1 Status

V&V Scientist	Jen Lauer
V&V Date (YYYY-MM-DD)	2006.09.06
V&V Edition	1
V&V Disposition and Status	OK
V&V Charge Time	5.276

A.2 Comments

Roll preference met.