

# V&V Reference Report

## L2 ASCDS Version : 7.6.9

Observation 3071 - L2 Version 001  
Chandra X-Ray Center

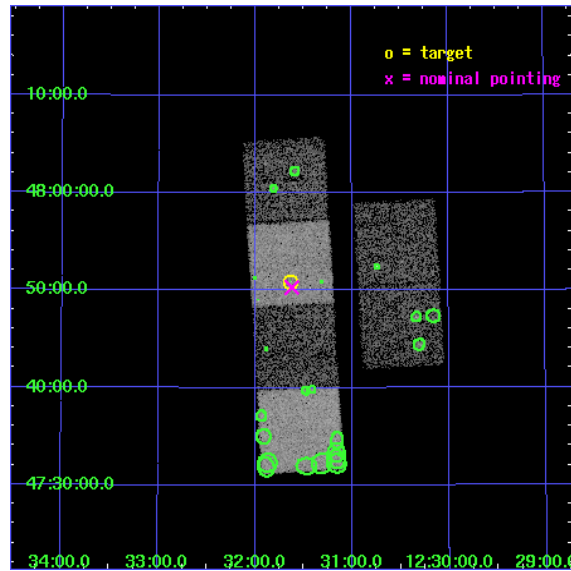
L2 Processing Date : Sep 22 2006

## Contents

<b>1</b>	<b>Front</b>	<b>2</b>
<b>2</b>	<b>OBI</b>	<b>3</b>
2.1	OBI . . . . .	3
2.1.1	Images . . . . .	3
2.1.2	Bias . . . . .	3
2.1.3	Parameters . . . . .	4
2.1.4	Events . . . . .	4
2.2	Compared Parameters . . . . .	5
2.3	Aspect . . . . .	6
2.4	Star Slots . . . . .	9
2.4.1	Slot 3 . . . . .	9
2.4.2	Slot 4 . . . . .	10
2.4.3	Slot 5 . . . . .	11
2.4.4	Slot 6 . . . . .	12
2.4.5	Slot 7 . . . . .	13
2.5	FID Slots . . . . .	14
2.5.1	Slot 0 . . . . .	14
2.5.2	Slot 1 . . . . .	15
2.5.3	Slot 2 . . . . .	16
<b>3</b>	<b>Point Sources</b>	<b>17</b>
<b>A</b>	<b>Summary</b>	<b>18</b>
A.1	Status . . . . .	18
A.2	Comments . . . . .	18

# 1 Front

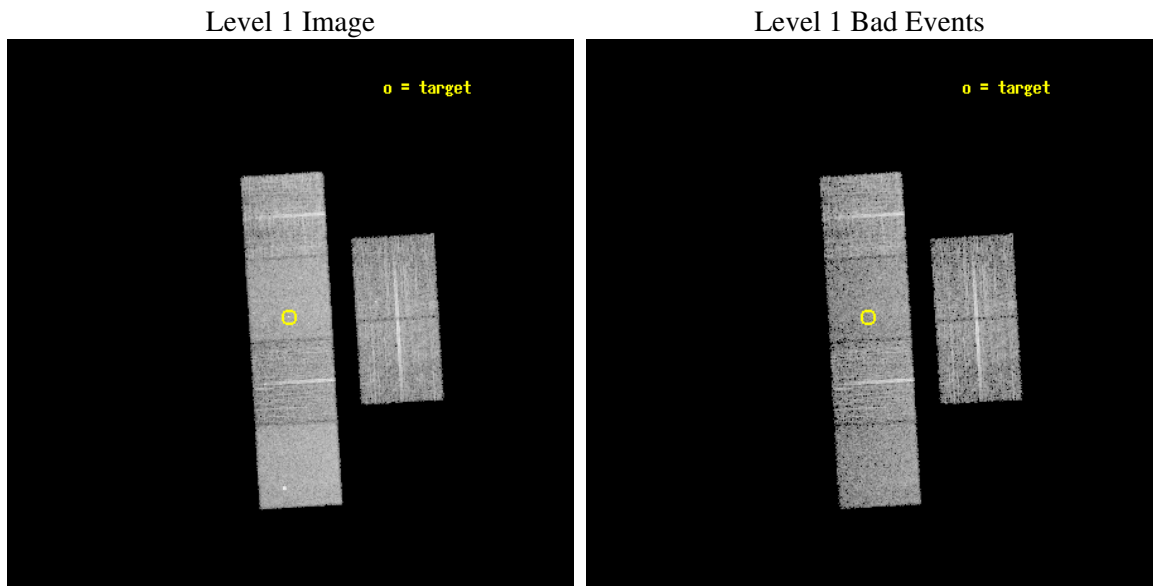
seq_num	700510
obs_id	3071
title	X-RAY WEAK BROAD-LINE QUASARS: ABSORPTION OR INTRINSIC X_RAY WEAKNESS ?
observer	Dr Guido Risaliti
object	HS 1229+4807
dtcycle	0
cycle	P
ra_targ	187.90875
dec_targ	47.848056
ra_nom	187.90540878103
dec_nom	47.838687743611
roll_nom	266.6001140392
revision	2
ontime	6755.1999748349
livetime	6669.6615652605
ontime2	6755.1999748349
ontime3	6755.1999748349
ontime5	6755.1999748349
ontime6	6755.1999748349
ontime7	6755.1999748349
ontime8	6751.9591441453
l2events	68124



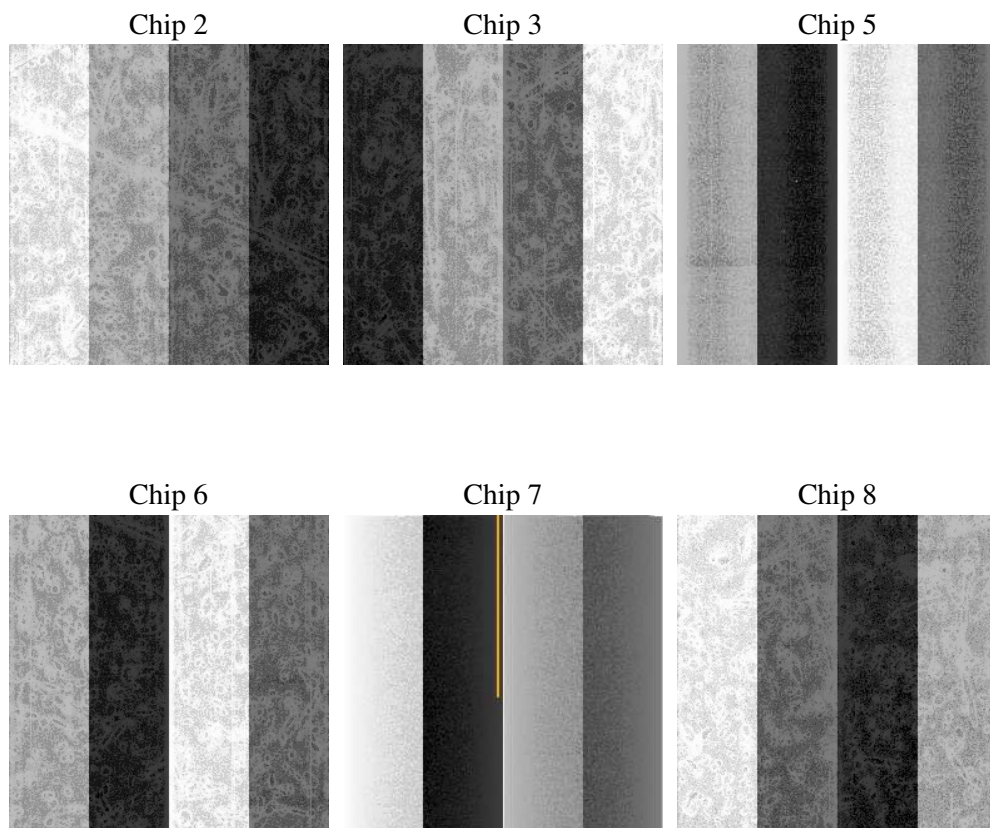
## 2 OBI

### 2.1 OBI

#### 2.1.1 Images



#### 2.1.2 Bias



### 2.1.3 Parameters

obi_num	1
ascdsver	7.6.9
caldsver	3.2.3
date	2006-09-22T22:51:34
revision	2

sched_exp_time	7000.000000
ontime	6760.7234274745
ontime2	6760.7234274745
ontime3	6760.7234274745
ontime5	6760.7234274745
ontime6	6760.7234274745
ontime7	6760.7234274745
ontime8	6757.4824871421
l1events	322950

### 2.1.4 Events

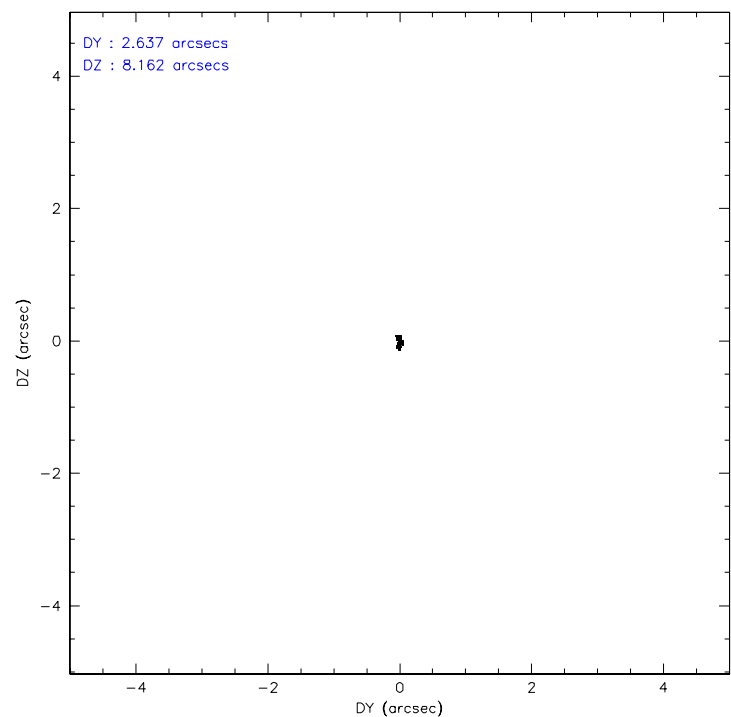
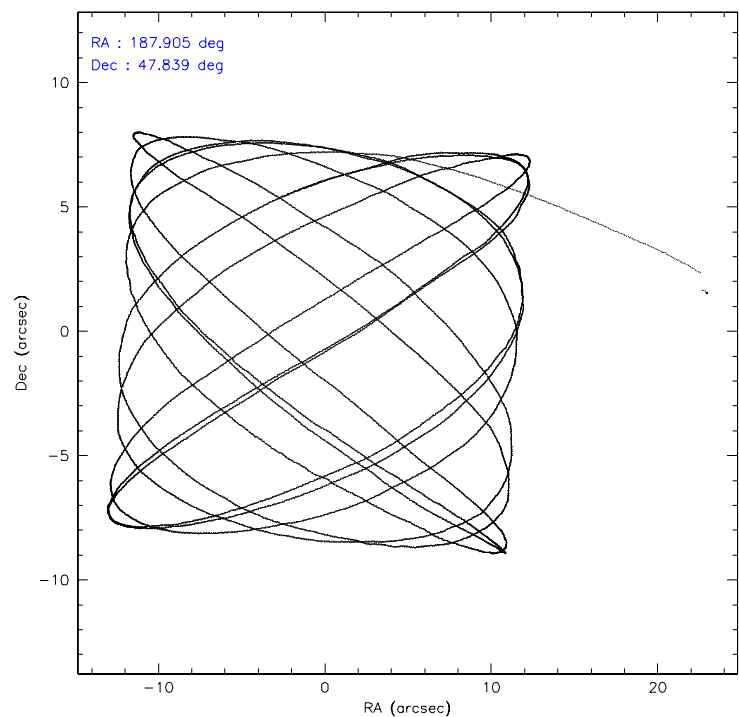
	ccd 2	ccd 3	ccd 5	ccd 6	ccd 7	ccd 8
level 1 events	46646	45647	63970	47121	59538	60028
rejected events	41331	40475	36182	41891	36542	48660
rejected %	88%	88%	56%	88%	61%	81%

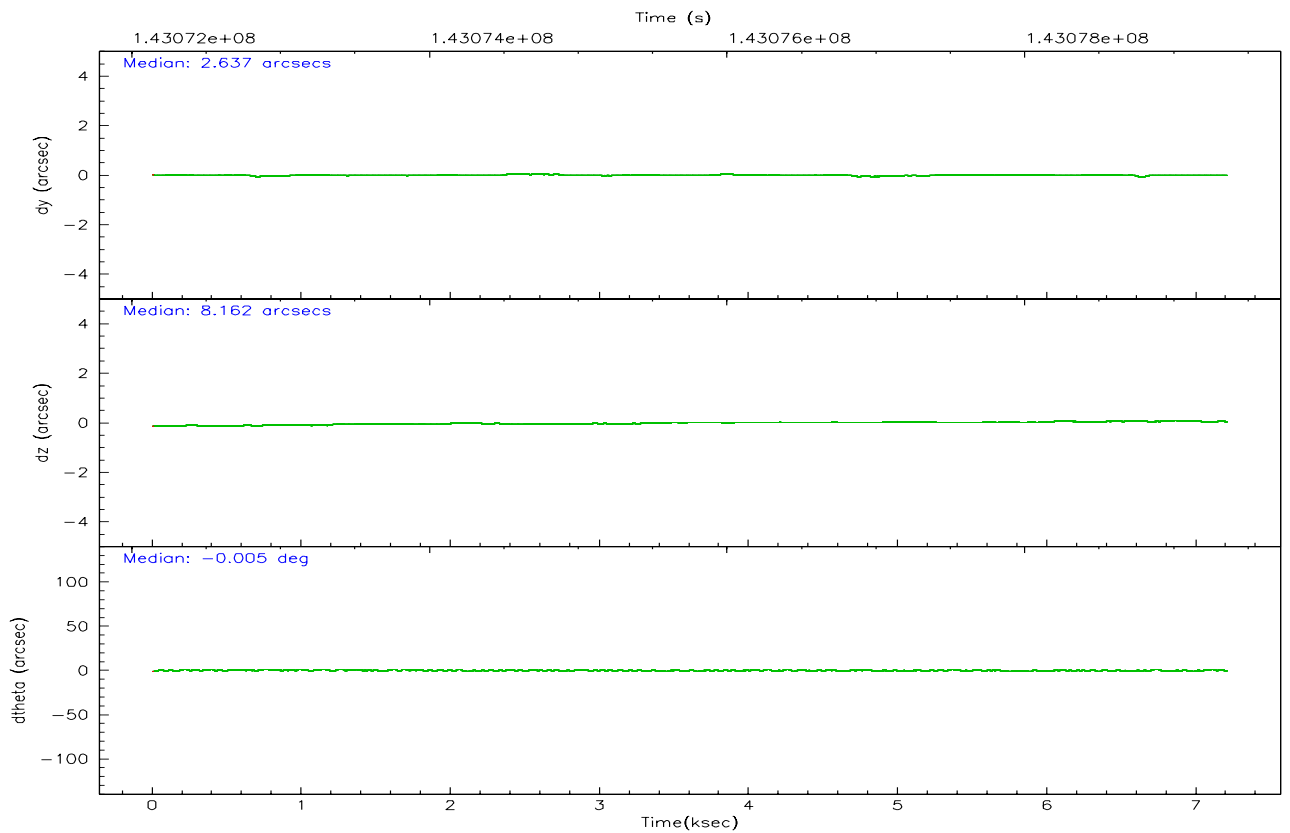
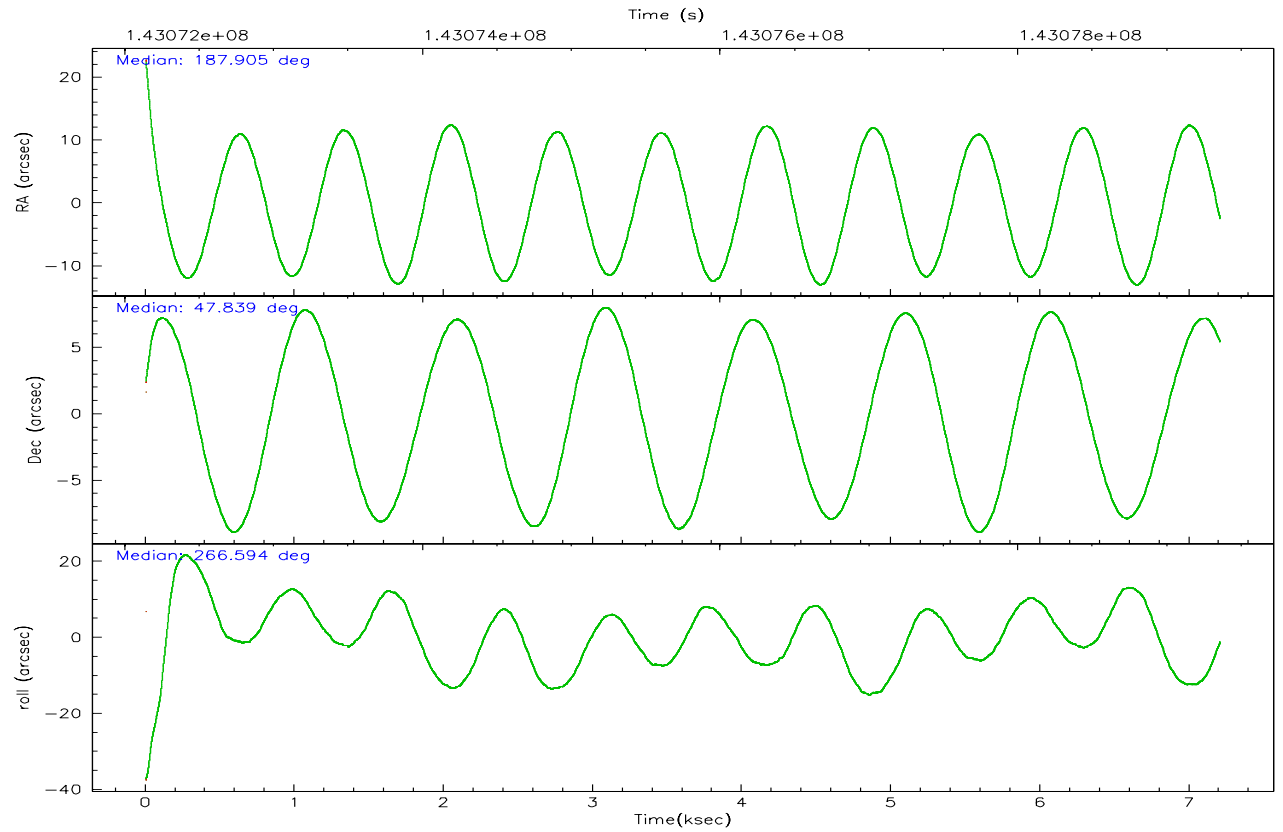
	ccd 2	ccd 3	ccd 5	ccd 6	ccd 7	ccd 8
grade 0 events	2318	2287	1456	2010	1528	3592
	4%	5%	2%	4%	2%	5%
grade 1 events	15	28	63	28	36	29
	0%	0%	0%	0%	0%	0%
grade 2 events	1140	999	8641	1069	5684	2440
	2%	2%	13%	2%	9%	4%
grade 3 events	490	498	856	538	1245	1115
	1%	1%	1%	1%	2%	1%
grade 4 events	486	488	603	536	1098	1131
	1%	1%	0%	1%	1%	1%
grade 5 events	1570	1777	3055	1938	4046	2389
	3%	3%	4%	4%	6%	3%
grade 6 events	882	902	16242	1078	13451	3093
	1%	1%	25%	2%	22%	5%
grade 7 events	39745	38668	33054	39924	32450	46239
	85%	84%	51%	84%	54%	77%

## 2.2 Compared Parameters

Parameter	Planned	Actual	Parameter	Planned	Actual
Instrument	ACIS	ACIS	Obspar format version number	6	6
Detector	ACIS-235678	ACIS-235678	Obspar file type	PREDICTED	ACTUAL
Grating	NONE	NONE	Obspar update status	NONE	UPDATED
Data mode	FAINT	FAINT	Number of optional ACIS chips dropped	0	0
Observation mode	POINTING	POINTING	On-chip summing requested	N	N
Pointing RA	187.886723	187.9054087810325	Subarray requested	NONE	NONE
Pointing Dec	47.862835	47.83868774361114	Alternating exposures requested	N	N
Pointing Roll	266.457355	266.600114039198	Primary exposure time	0.000000	3.2
SIM focus pos (mm)	-0.684267	-0.6828225247311905			
SIM defocus (mm)	0	0.001444936568705701			
SIM translation stage pos (mm)	-190.132523	-190.1400660498719			
SIM translation stage offset (mm)	0	0.00754346686406393			
Observation start time	143072354.184000	143071606.44583			
Observation start date	2002-07-14T22:18:10	2002-07-14T22:06:46			
Observation end time	143079354.184000	143079905.87117			
Observation end date	2002-07-15T00:14:50	2002-07-15T00:25:05			
Read mode	TIMED	TIMED			

### 2.3 Aspect





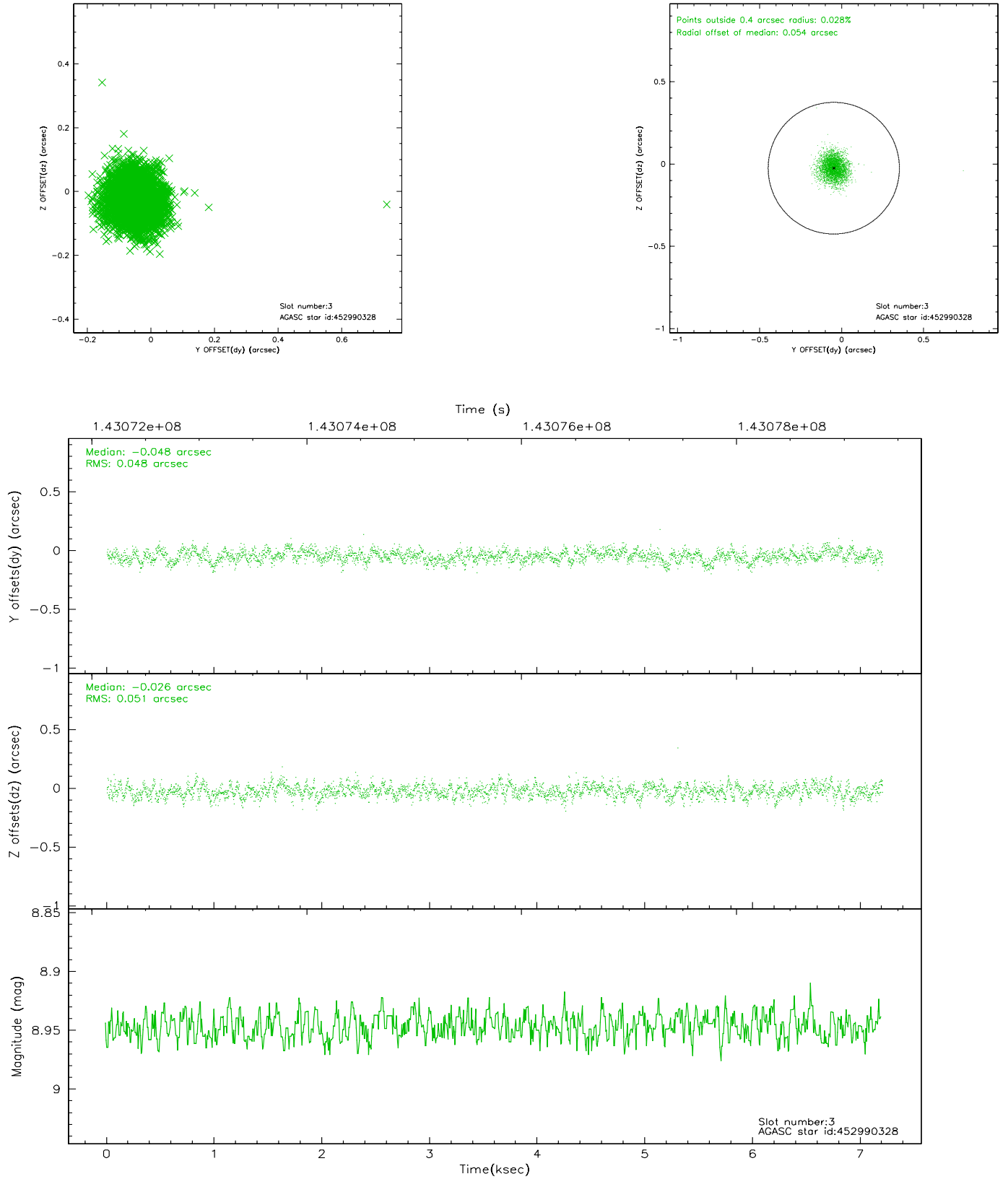
### Slot Statistics

slot	status	id	mag	n_pts	med_dy	med_dz	dr1	dr2	ra	dec	mean_y	mean_z
0	FID	ACIS-S-1	7.19	1758	0.003	0.026	0.007	0.011	0.000000	0.000000	940.75	-1724.96
1	FID	ACIS-S-5	7.24	1758	0.034	0.033	0.006	0.010	0.000000	0.000000	-1807.74	171.82
2	FID	ACIS-S-6	7.35	1758	-0.059	-0.047	0.007	0.012	0.000000	0.000000	405.42	816.57
3	GUIDE	452990328	8.95	3511	-0.048	-0.026	0.073	0.116	187.139482	47.966878	-270.94	-1820.16
4	GUIDE	452988904	9.48	3508	-0.025	-0.025	0.087	0.140	187.918892	48.028746	-600.77	41.08
5	GUIDE	452988936	9.66	3514	0.083	-0.036	0.115	0.185	187.888415	47.289636	2059.49	133.13
6	GUIDE	452993136	9.60	3514	0.000	0.014	0.106	0.168	187.055483	47.494487	1438.71	-1935.29
7	GUIDE	452988424	9.82	3505	-0.001	0.074	0.105	0.174	187.420717	47.373654	1825.29	-1024.34

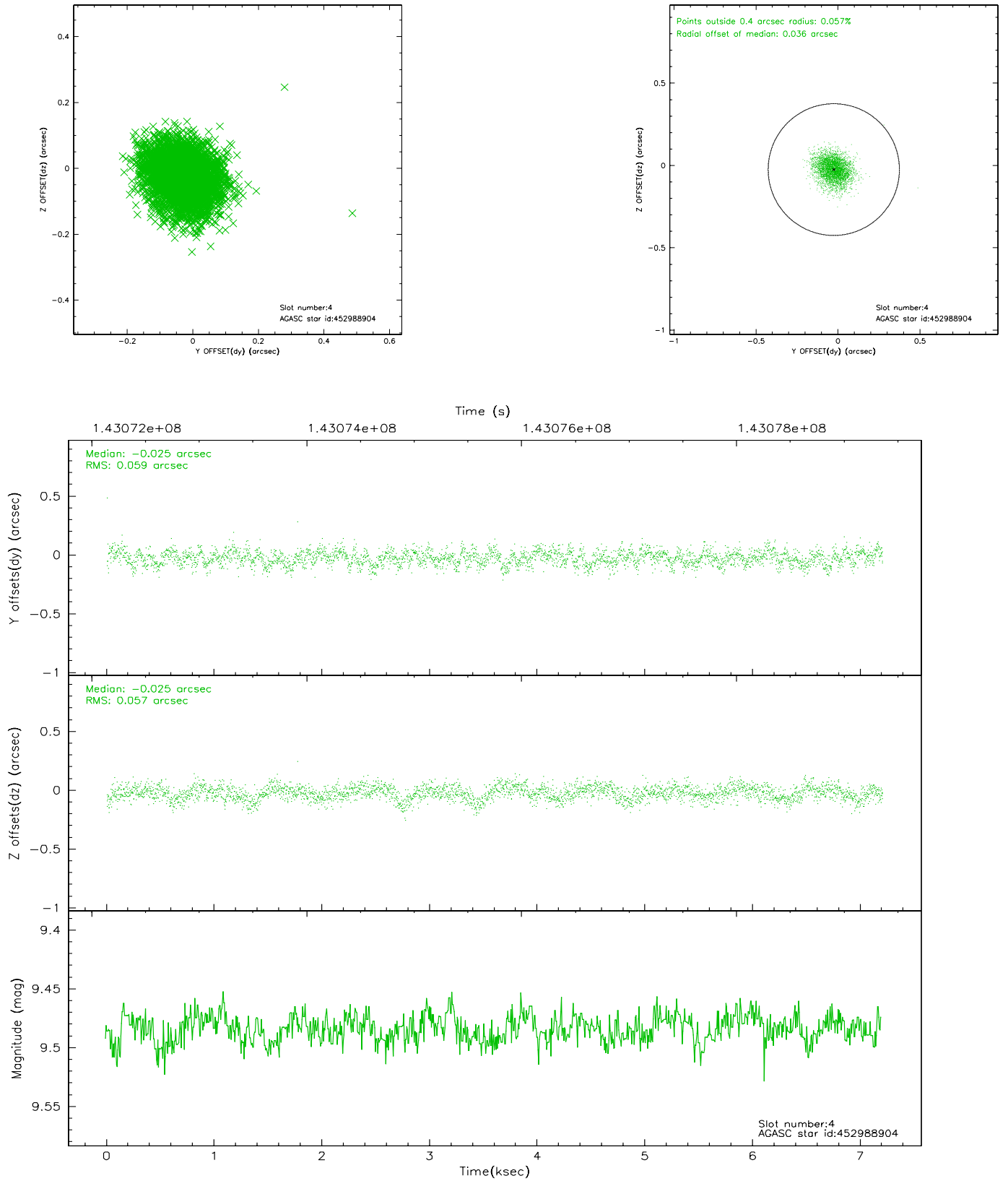


## 2.4 Star Slots

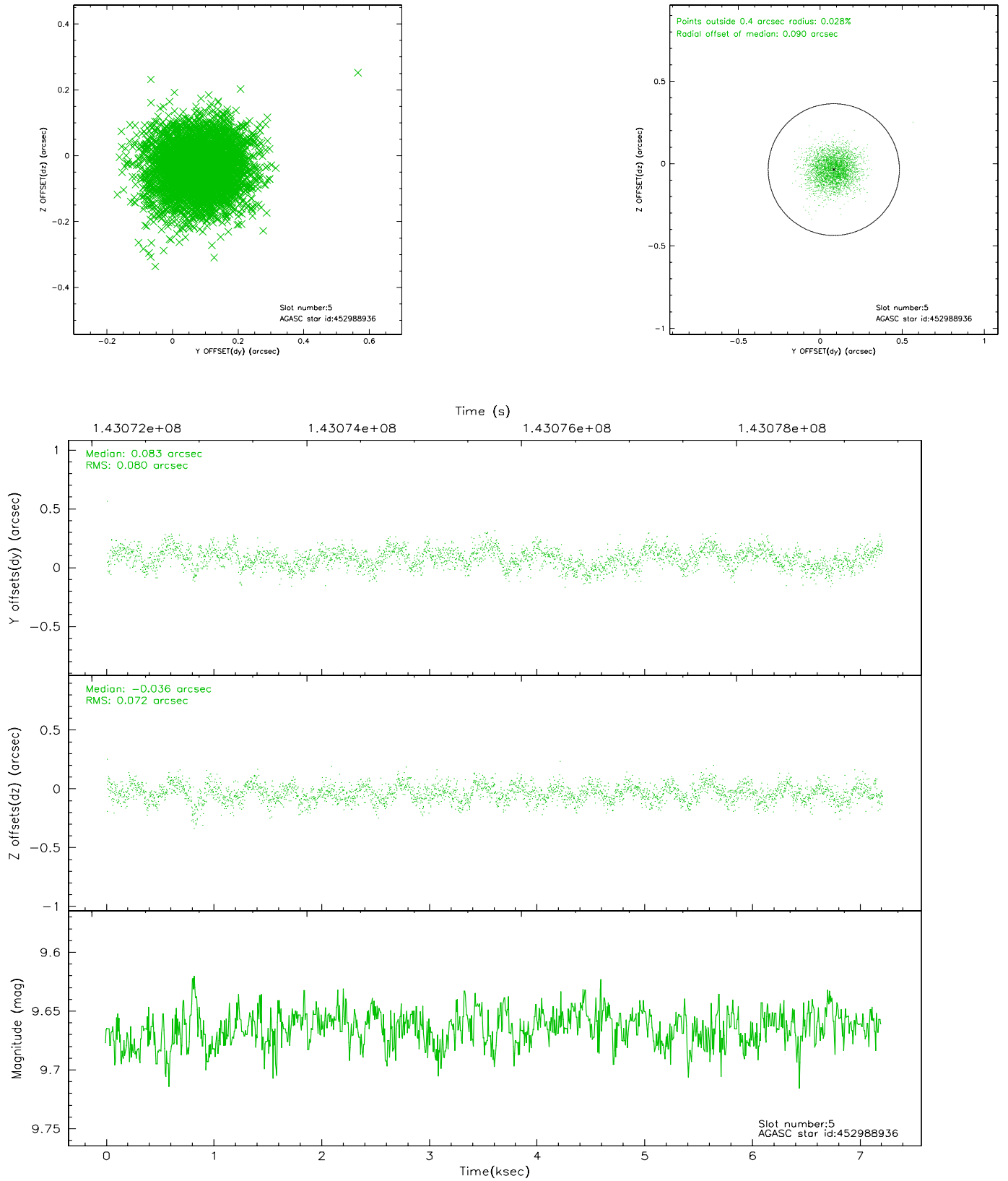
### 2.4.1 Slot 3



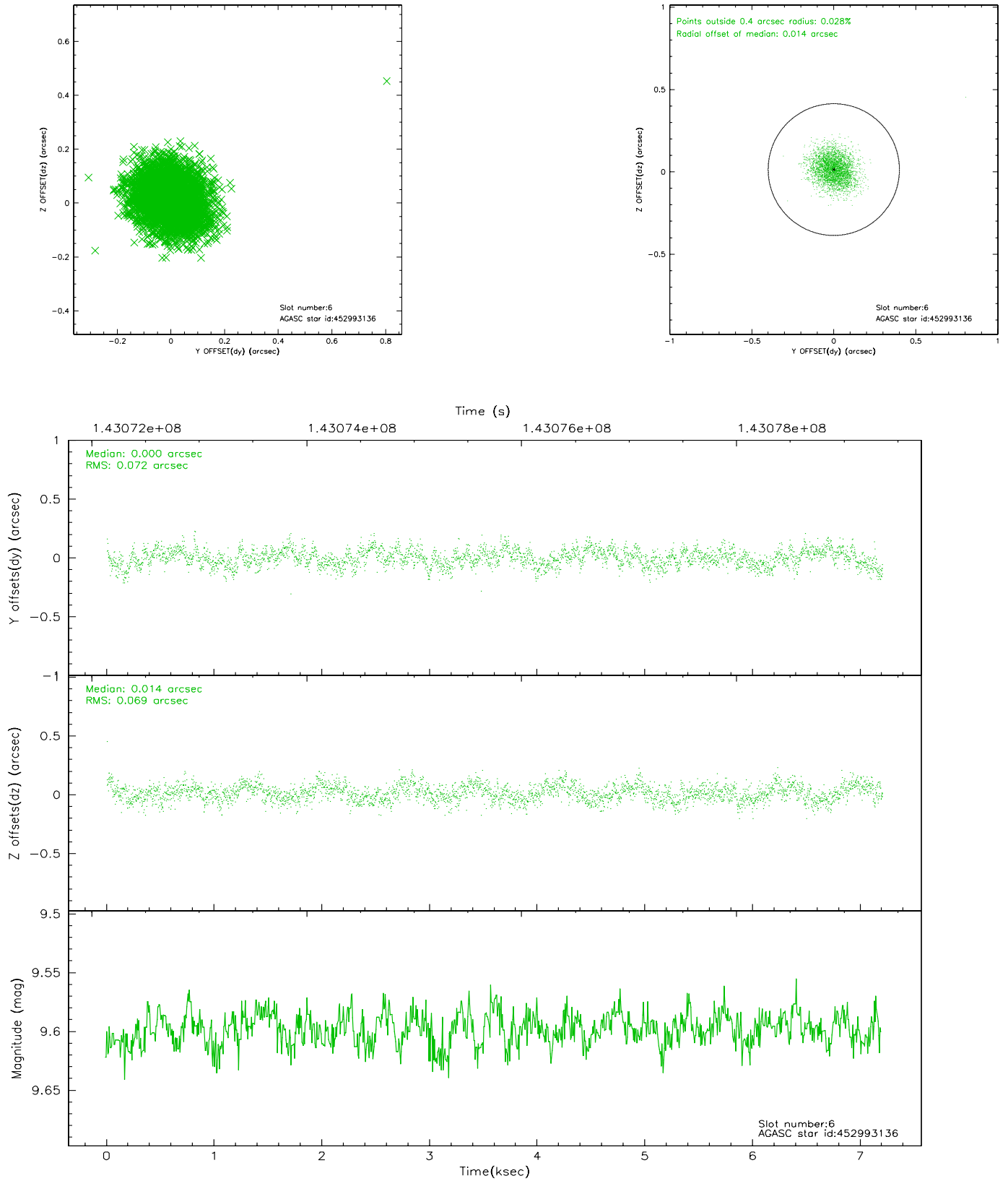
## 2.4.2 Slot 4



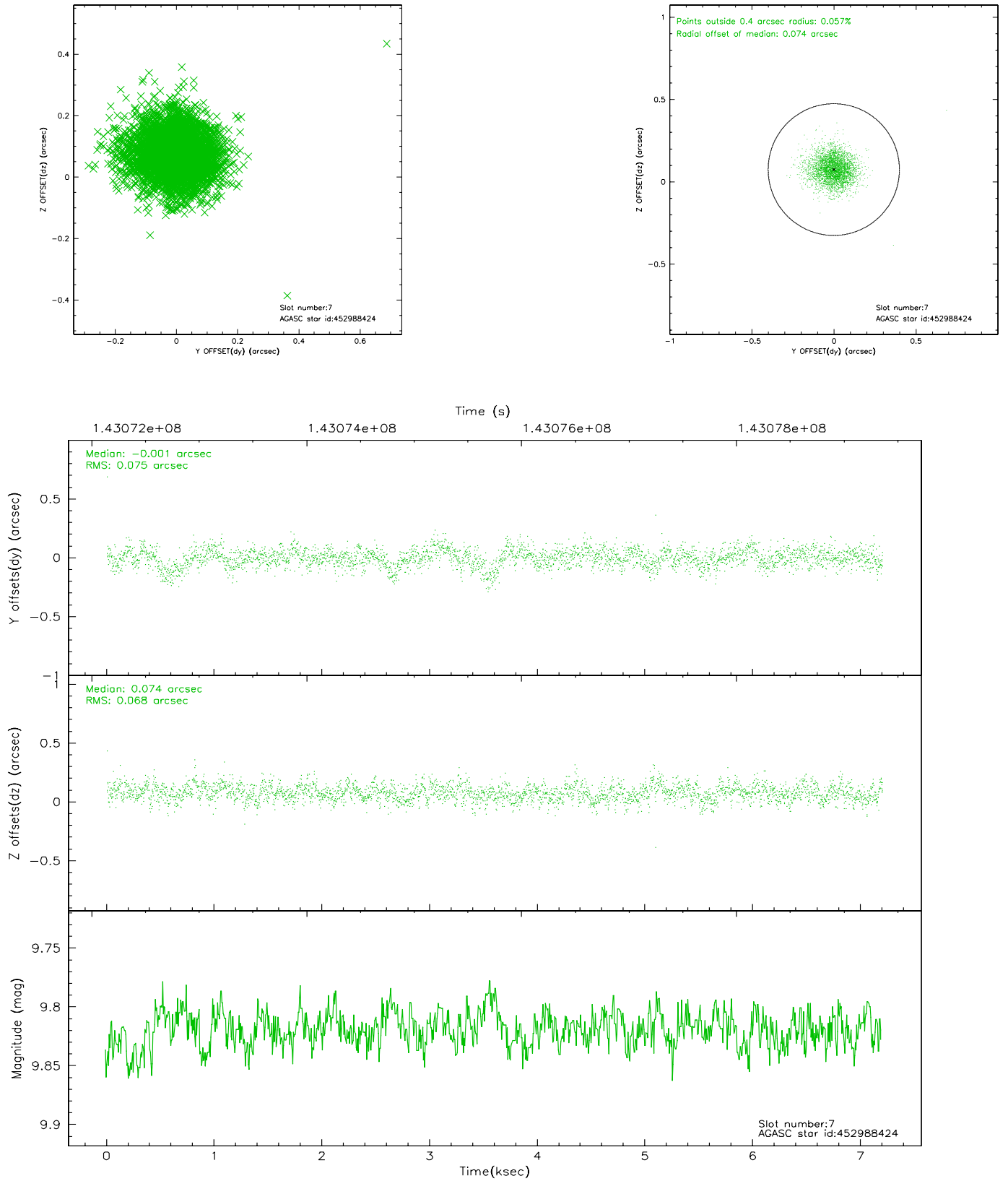
### 2.4.3 Slot 5



## 2.4.4 Slot 6

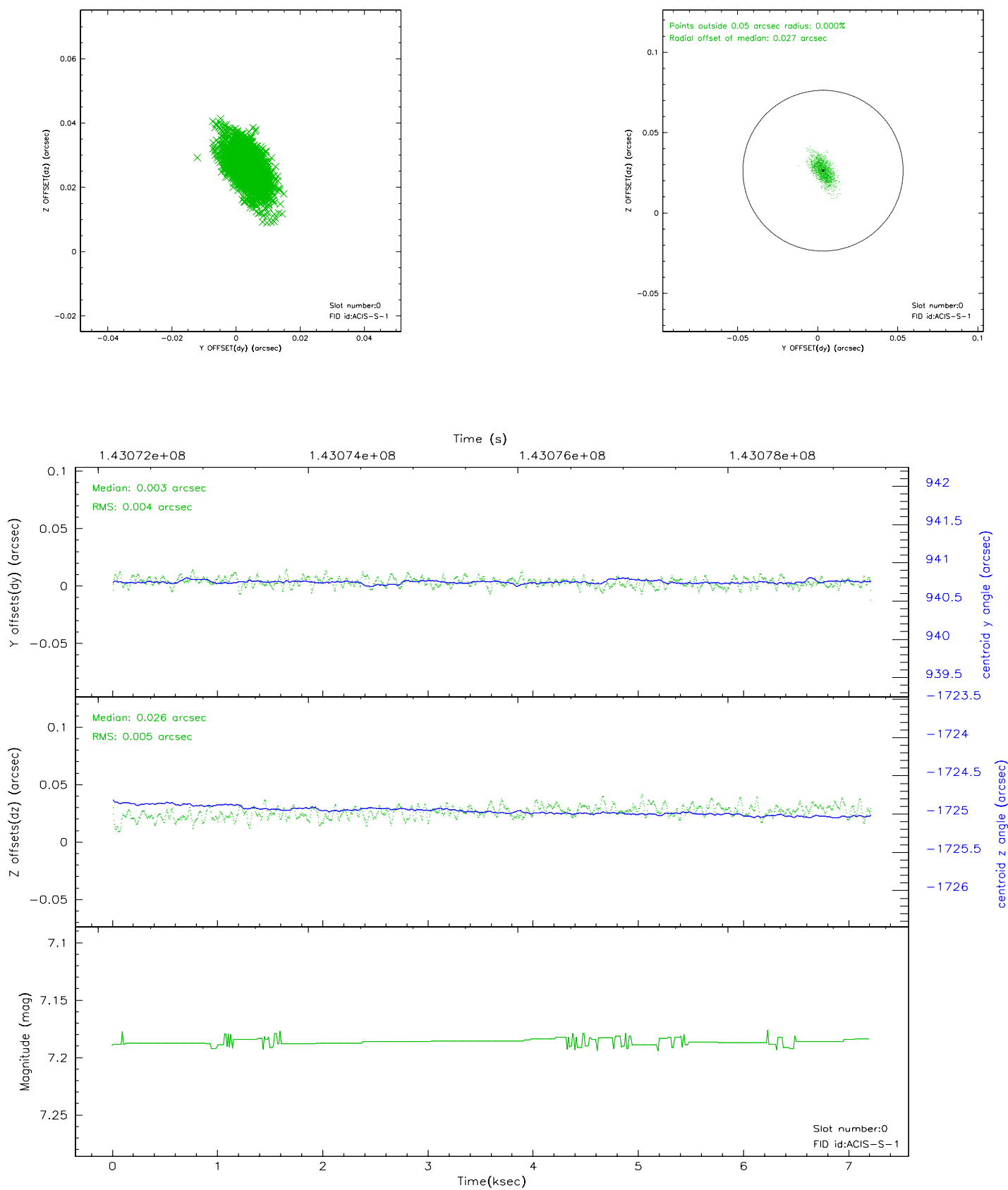


## 2.4.5 Slot 7

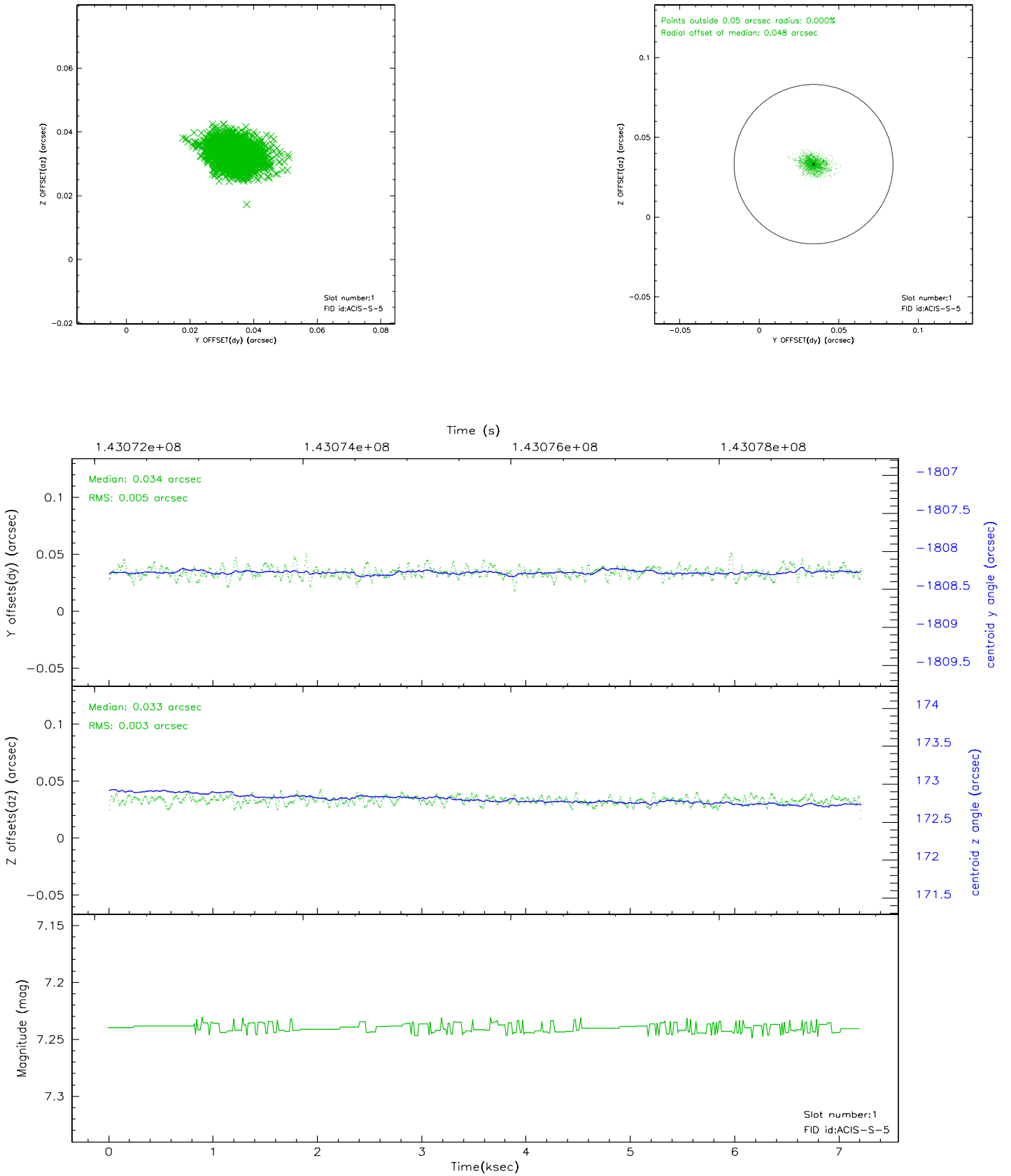


## 2.5 FID Slots

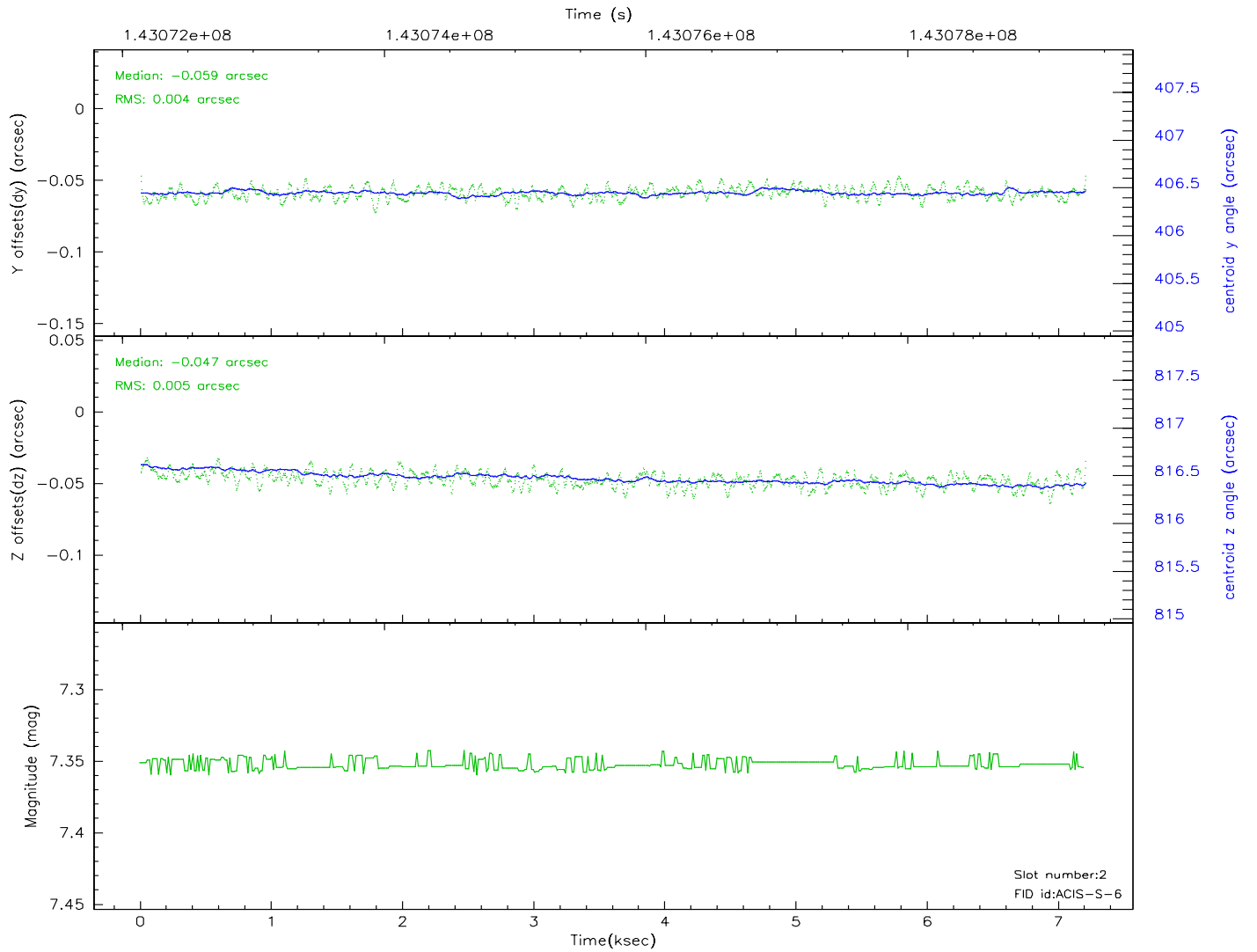
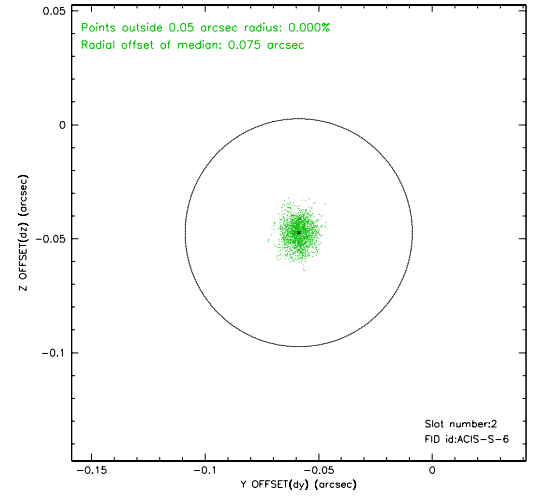
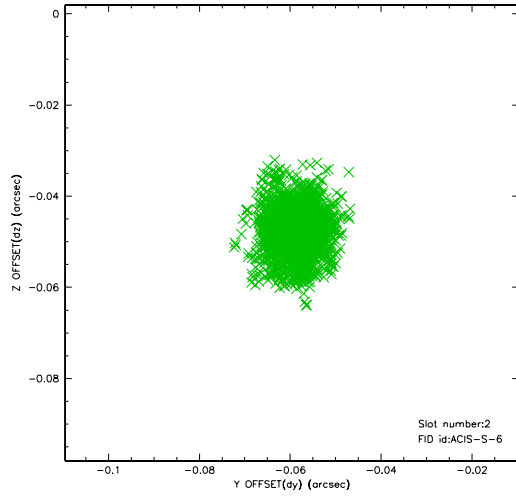
### 2.5.1 Slot 0



## 2.5.2 Slot 1

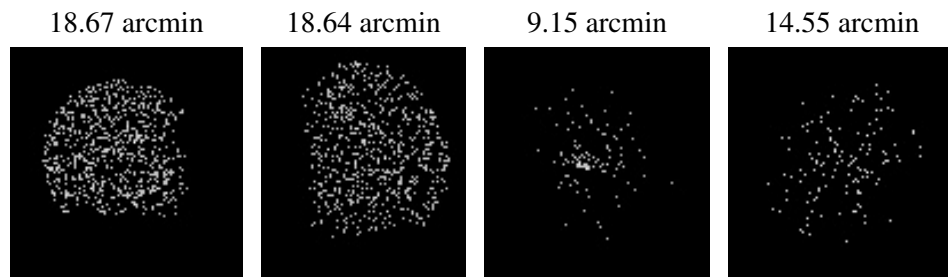


### 2.5.3 Slot 2





### 3 Point Sources



## A Summary

### A.1 Status

V&V Scientist	Beth Sundheim
V&V Date (YYYY-MM-DD)	2006.09.24
V&V Edition	1
V&V Disposition and Status	OK
V&V Charge Time	6.755

### A.2 Comments