

V&V Reference Report

L2 ASCDS Version : 8.4.5

Observation 2841 - L2 Version 3
Chandra X-Ray Center

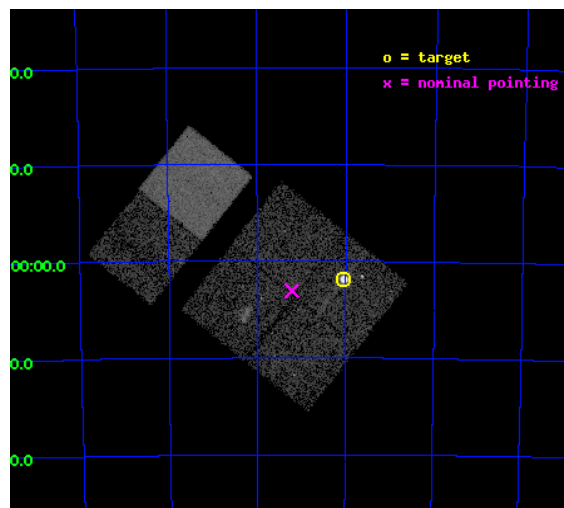
L2 Processing Date : Sep 28 2012

Contents

1	Front	2
2	OBI	3
2.1	OBI	3
2.1.1	Images	3
2.1.2	Bias	3
2.1.3	Parameters	4
2.1.4	Events	4
2.2	Compared Parameters	5
2.3	Aspect	6
2.4	Star Slots	9
2.4.1	Slot 3	9
2.4.2	Slot 4	10
2.4.3	Slot 5	11
2.4.4	Slot 6	12
2.4.5	Slot 7	13
2.5	FID Slots	14
2.5.1	Slot 0	14
2.5.2	Slot 1	15
2.5.3	Slot 2	16
A	Summary	17
A.1	Status	17
A.2	Comments	17

1 Front

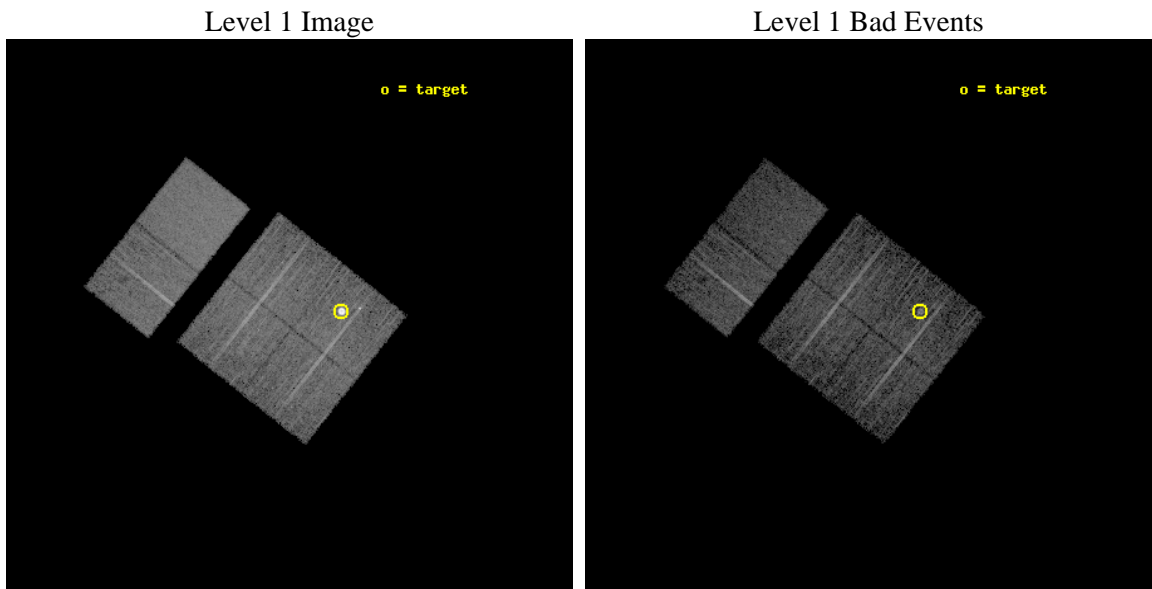
seq_num	590230	Sequence number
obs_id	2841	Observation id
title	AO3A ACIS-I CALIBRATION OBSERVATIONS OF E0102-72	Proposal title
observer	Dr. CXC Calibration	Principal investigator
object	E0102-72.3 [Chip I1, T=120, Offsets=-4,-3,0]	Source name
dtcycle	0	
cycle	P	events from which exps? Prim/Second/Both
ra_targ	16.01	Observer's specified target RA [deg]
dec_targ	-72.032028	Observer's specified target Dec [deg]
ra_nom	16.30385779768	Nominal RA [deg]
dec_nom	-72.051211039696	Nominal Dec [deg]
roll_nom	308.44293898906	Nominal Roll [deg]
revision	3	Processing version of data
ontime	7558.4000070244	Sum of GTIs [s]
livetime	7462.6909950134	Livetime [s]
ontime0	7558.4000070244	Sum of GTIs [s]
ontime1	7558.4000070244	Sum of GTIs [s]
ontime2	7558.4000070244	Sum of GTIs [s]
ontime3	7558.4000070244	Sum of GTIs [s]
ontime6	7558.4000070244	Sum of GTIs [s]
ontime7	7558.4000070244	Sum of GTIs [s]
l2events	77815	Number of level 2 events



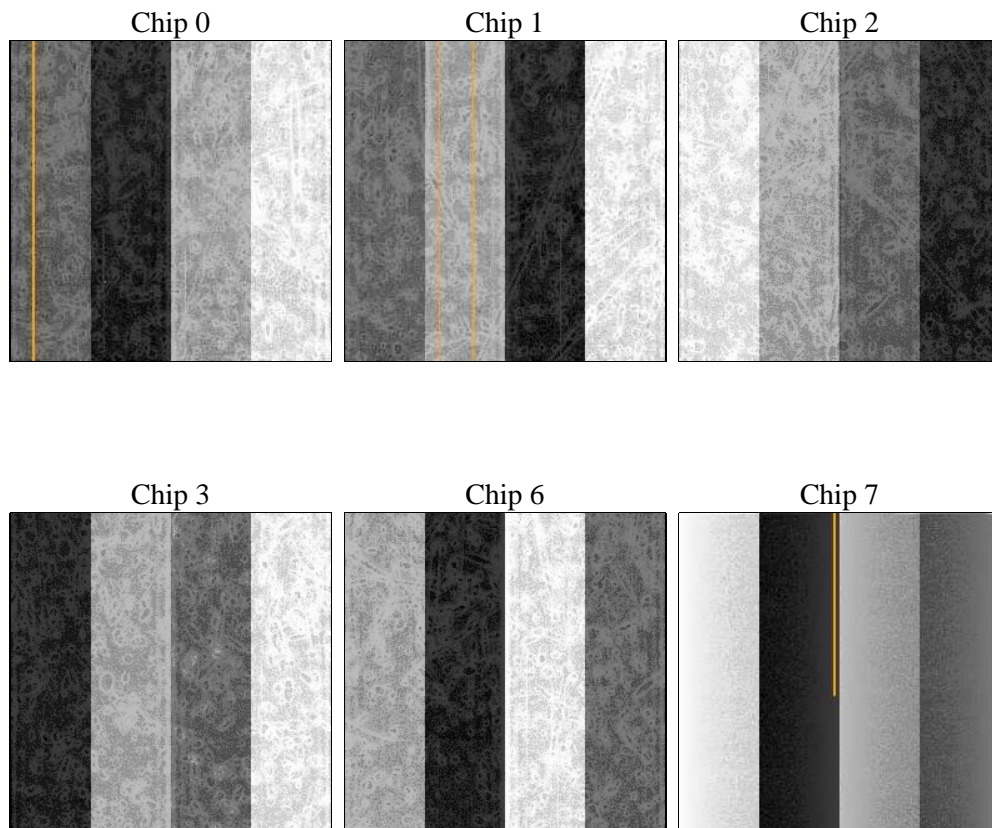
2 OBI

2.1 OBI

2.1.1 Images



2.1.2 Bias



2.1.3 Parameters

obi_num	1	Obi number	sched_exp_time	7800.000000	[s] Scheduled observation exposure time
ascdsver	8.4.5	Processing system revision	ontime	7558.4000070244	Sum of GTIs [s]
caldsver	4.5.2	 	ontime0	7558.4000070244	Sum of GTIs [s]
date	2012-09-28T06:38:14	Date and time of file creation	ontime1	7558.4000070244	Sum of GTIs [s]
revision	3	Processing version of data	ontime2	7558.4000070244	Sum of GTIs [s]
			ontime3	7558.4000070244	Sum of GTIs [s]
			ontime6	7558.4000070244	Sum of GTIs [s]
			ontime7	7558.4000070244	Sum of GTIs [s]
			l1events	326207	Number of level 1 events

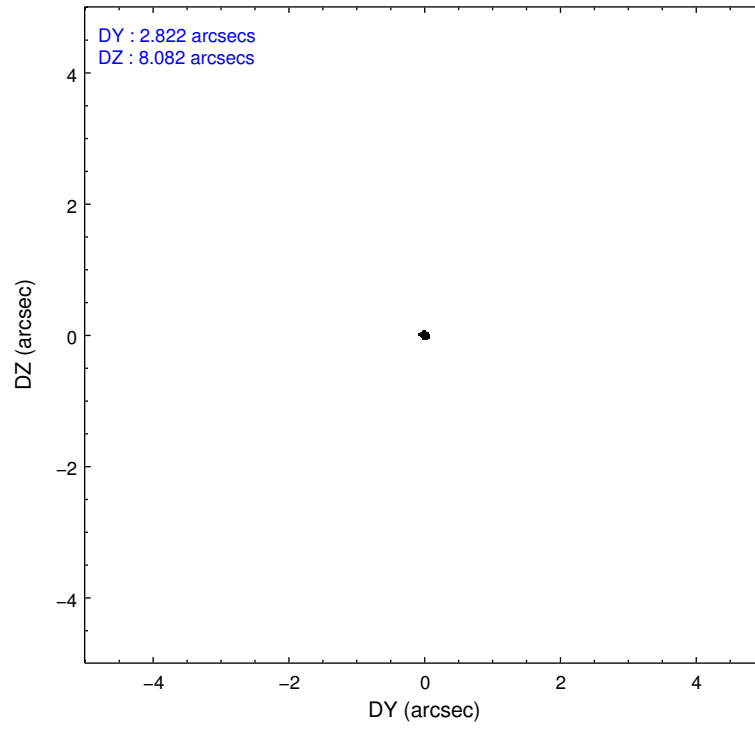
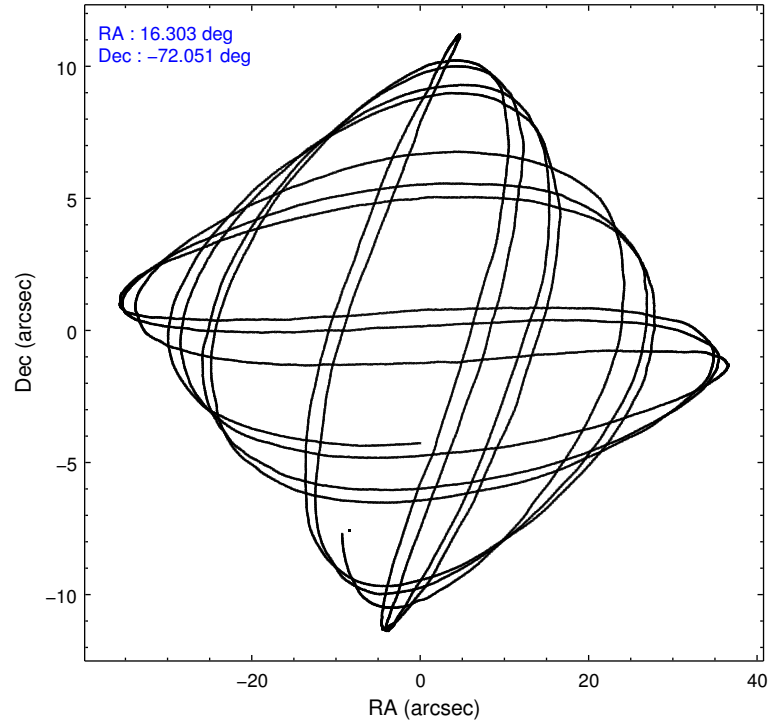
2.1.4 Events

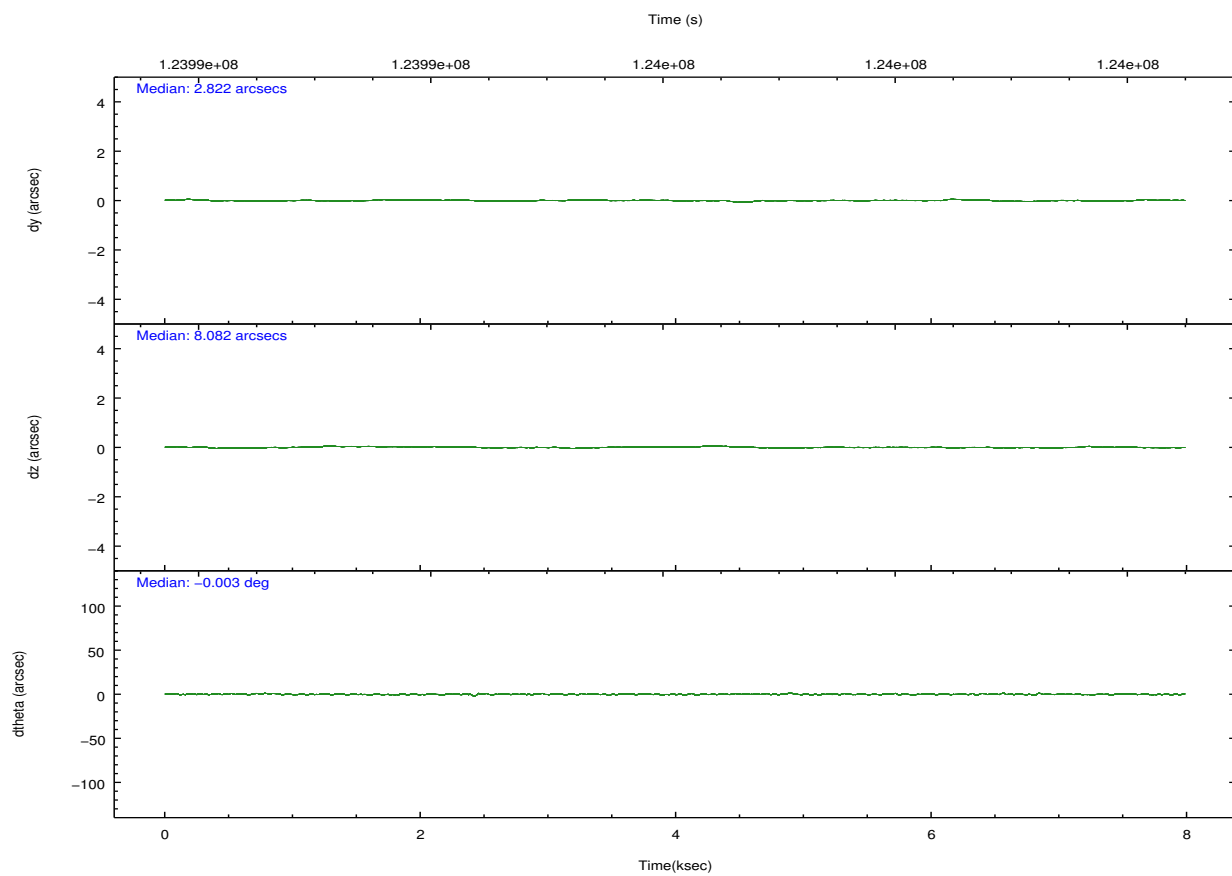
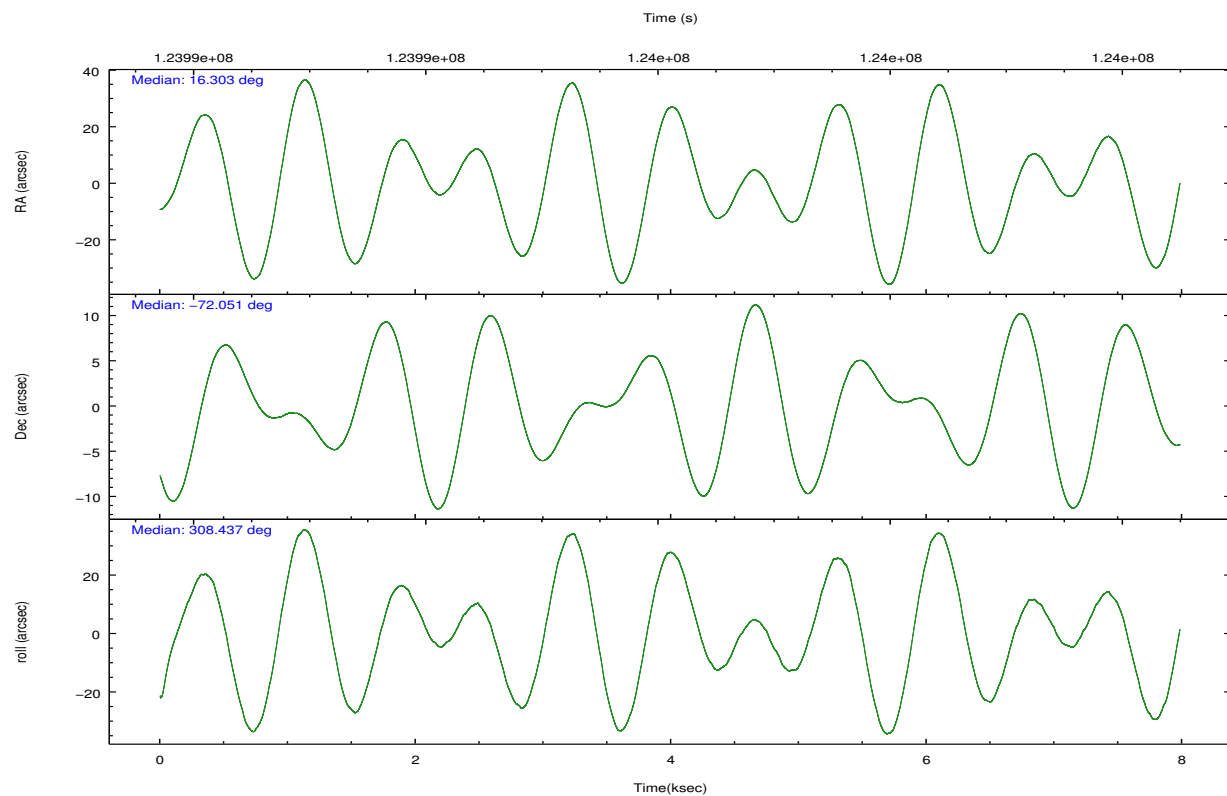
	ccd 0	ccd 1	ccd 2	ccd 3	ccd 6	ccd 7		ccd 0	ccd 1	ccd 2	ccd 3	ccd 6	ccd 7
level 1 events	43423	72500	48085	48409	50431	63359	grade 0 events	3068	25716	3002	2573	2335	2615
rejected events	37065	40192	41758	42613	44600	36310		7%	35%	6%	5%	4%	4%
rejected %	85%	55%	86%	88%	88%	57%	grade 1 events	19	213	33	20	22	53
								0%	0%	0%	0%	0%	0%
							grade 2 events	1271	3129	1292	1118	1263	5235
								2%	4%	2%	2%	2%	8%
							grade 3 events	608	1130	545	513	573	2436
								1%	1%	1%	1%	1%	3%
							grade 4 events	464	1066	525	568	539	2424
								1%	1%	1%	1%	1%	3%
							grade 5 events	1753	1935	1628	1933	2137	5887
								4%	2%	3%	3%	4%	9%
							grade 6 events	958	1293	970	1027	1126	14362
								2%	1%	2%	2%	2%	22%
							grade 7 events	35282	38018	40090	40657	42436	30347
								81%	52%	83%	83%	84%	47%

2.2 Compared Parameters

Parameter	Planned	Actual	Parameter	Planned	Actual
Instrument	ACIS	ACIS	Obspar format version number	7	7
Detector	ACIS-012367	ACIS-012367	Obspar file type	PREDICTED	ACTUAL
Grating	NONE	NONE	Obspar update status	NONE	UPDATED
Data mode	FAINT	FAINT	Number of optional ACIS chips dropped	0	0
Observation mode	POINTING	POINTING	On-chip summing requested	N	N
[deg] Pointing RA	16.221192	16.30385779768021	Subarray requested	NONE	NONE
[deg] Pointing Dec	-72.041168	-72.0512110396958	Alternating exposures requested	N	N
[deg] Pointing Roll	308.155617	308.4429389890576	[s] Primary exposure time	0.000000	3.2
[s] Window start time (MET)	123552064.184000	123552064.184000			
[s] Window stop time (MET)	126144064.184000	126144064.184000			
[mm] SIM focus pos	-0.782348	-0.7809083437167272			
[mm] SIM defocus	0	0.001439871863259334			
[mm] SIM translation stage pos	-233.592463	-233.5874344608287			
[mm] SIM translation stage offset	0	-0.005018542100998502			
[s] Observation start time (MET)	123992299.184000	123991923.05963			
Observation start date	2001-12-06T02:17:15	2001-12-06T02:12:03			
[s] Observation end time (MET)	124000099.184000	124000233.24747			
Observation end date	2001-12-06T04:27:15	2001-12-06T04:30:33			
Read mode	TIMED	TIMED			

2.3 Aspect



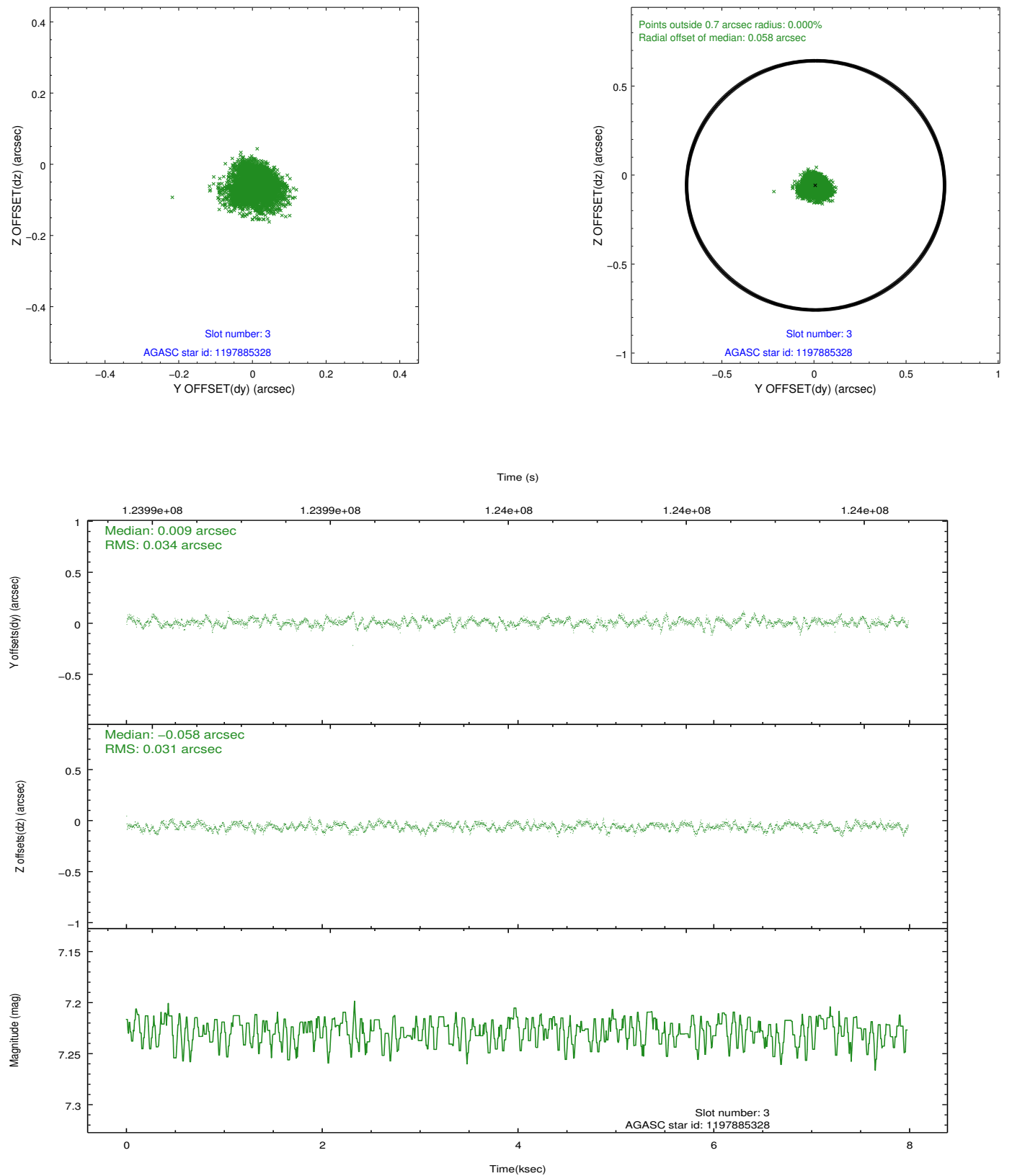


Slot Statistics

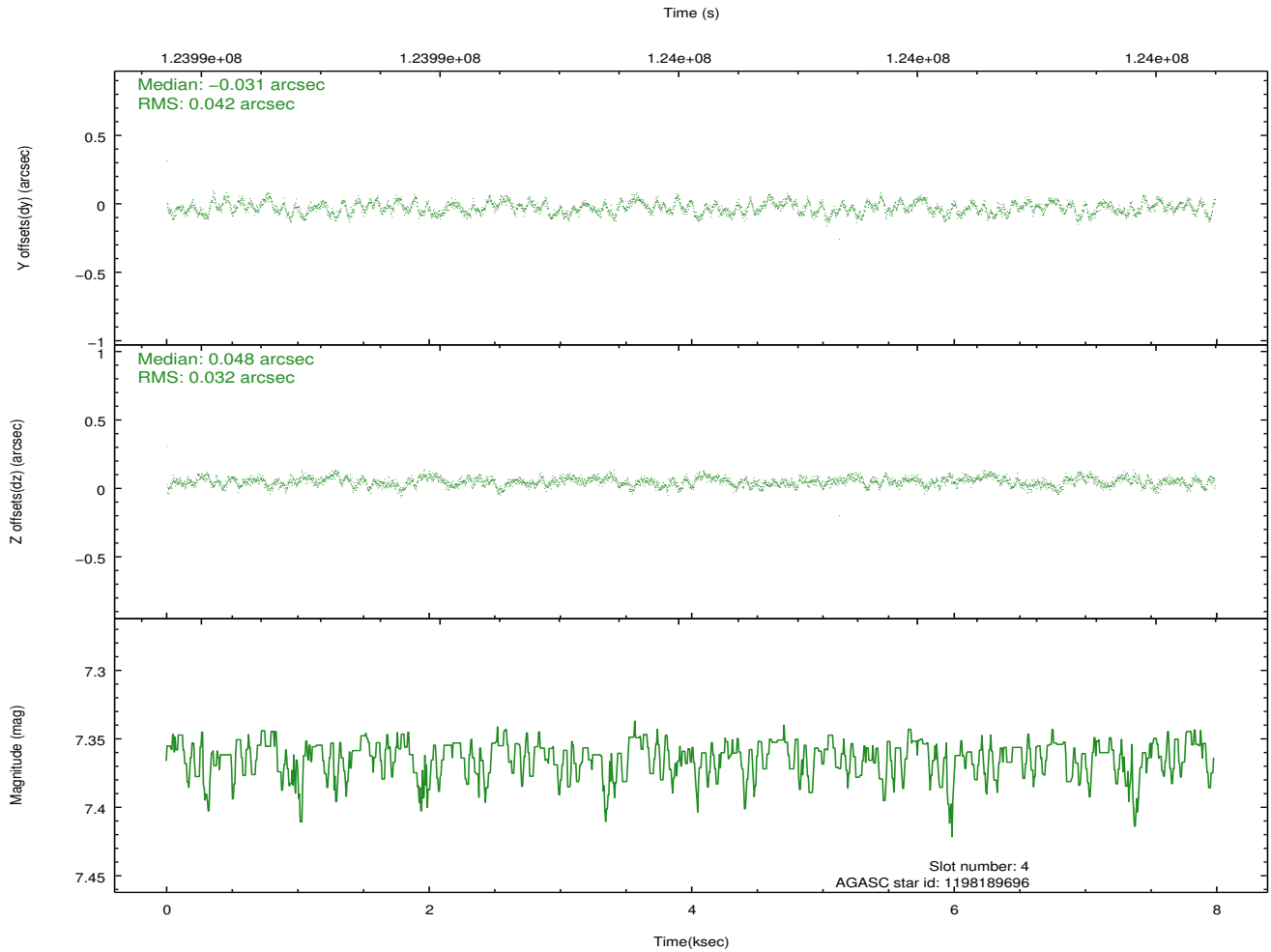
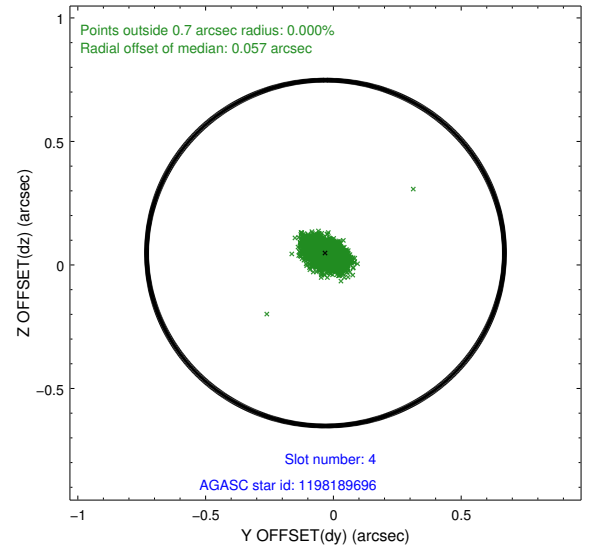
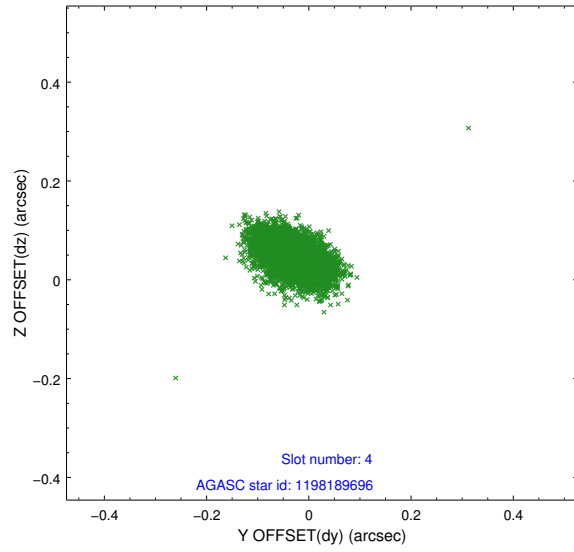
slot	status	id	mag	n_pts	med_dy	med_dz	dr1	dr2	ra	dec	mean_y	mean_z
0	FID	ACIS-I-3	7.44	1948	-0.029	0.205	0.007	0.011	0.000000	0.000000	54.38	-964.53
1	FID	ACIS-I-5	7.24	1947	-0.047	-0.006	0.006	0.011	0.000000	0.000000	-1811.26	1065.53
2	FID	ACIS-I-6	7.26	1948	-0.016	-0.130	0.006	0.011	0.000000	0.000000	401.71	1710.81
3	GUIDE	1197885328	7.23	3895	0.009	-0.058	0.049	0.080	16.283090	-71.733943	-826.41	738.91
4	GUIDE	1198189696	7.36	3895	-0.031	0.048	0.056	0.090	15.223750	-72.697522	1205.41	-2304.02
5	GUIDE	1197750936	7.56	3892	0.032	-0.116	0.066	0.105	15.387940	-71.549550	-1972.52	342.56
6	GUIDE	1198283128	8.02	3895	-0.126	0.068	0.044	0.072	17.272580	-72.642428	2406.94	-454.43
7	GUIDE	1197878768	9.62	3890	0.116	0.057	0.107	0.170	16.656786	-71.304581	-1772.61	2032.91

2.4 Star Slots

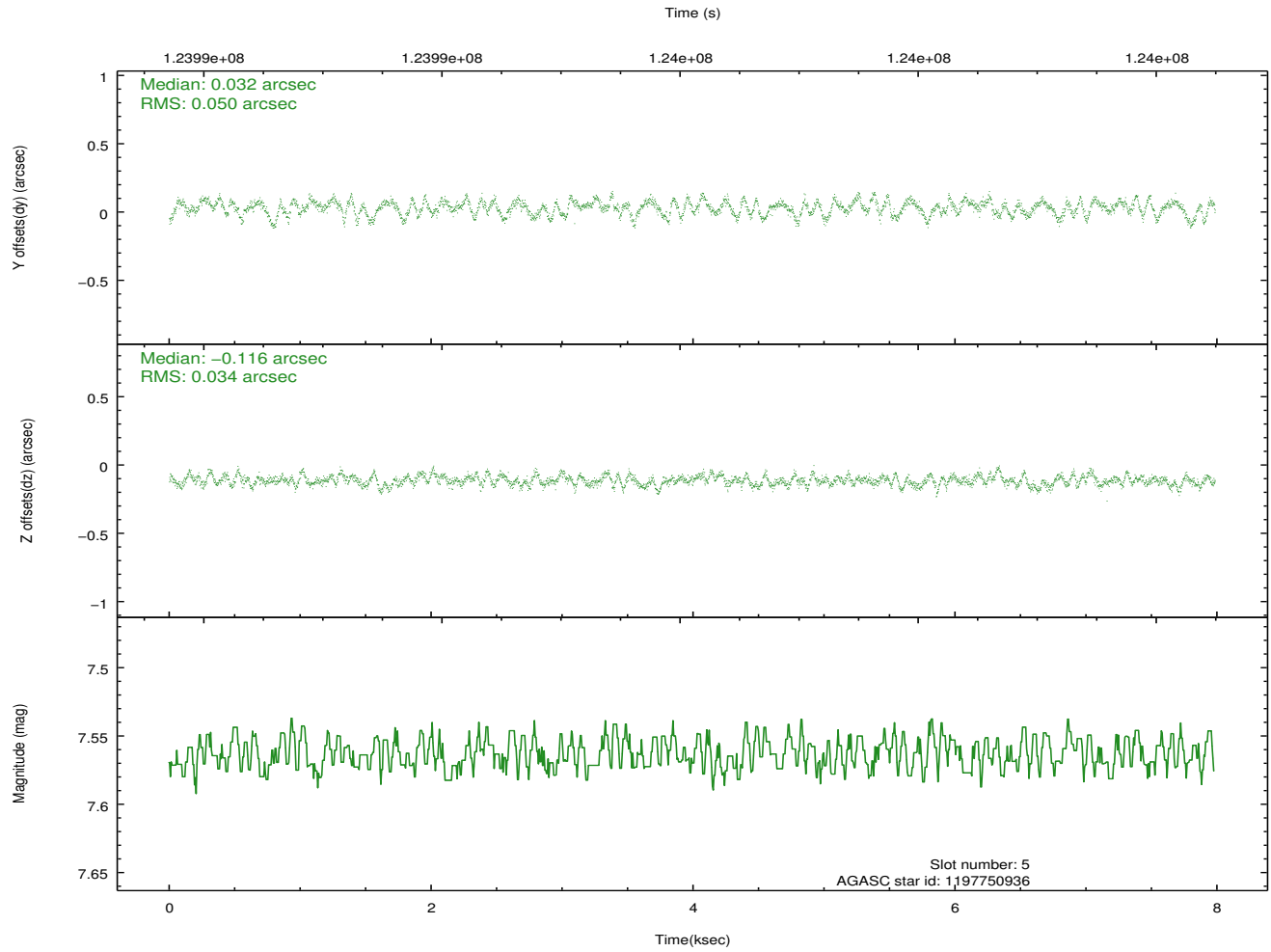
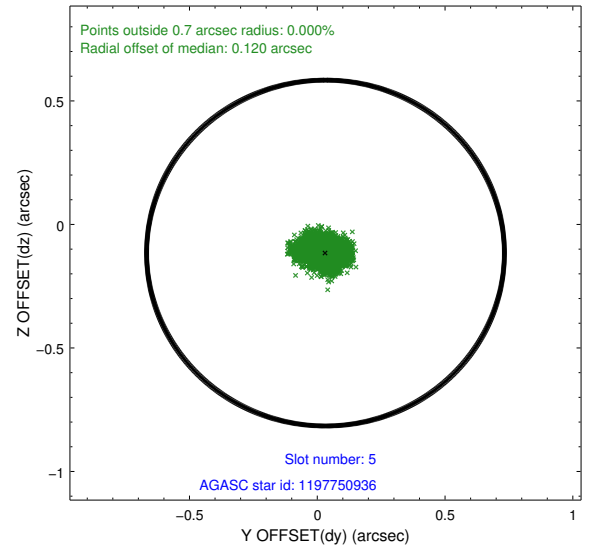
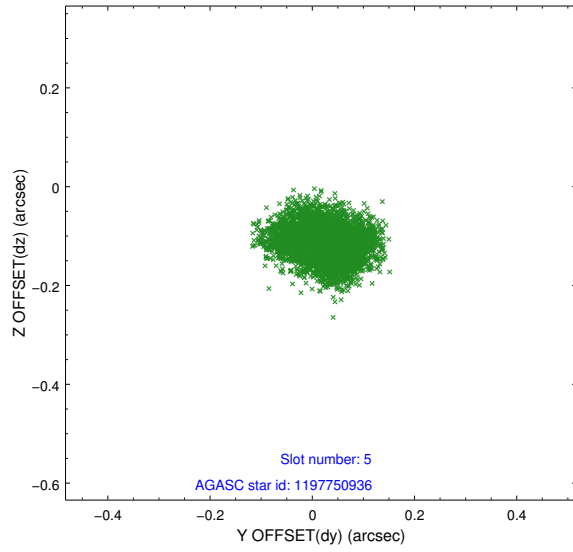
2.4.1 Slot 3



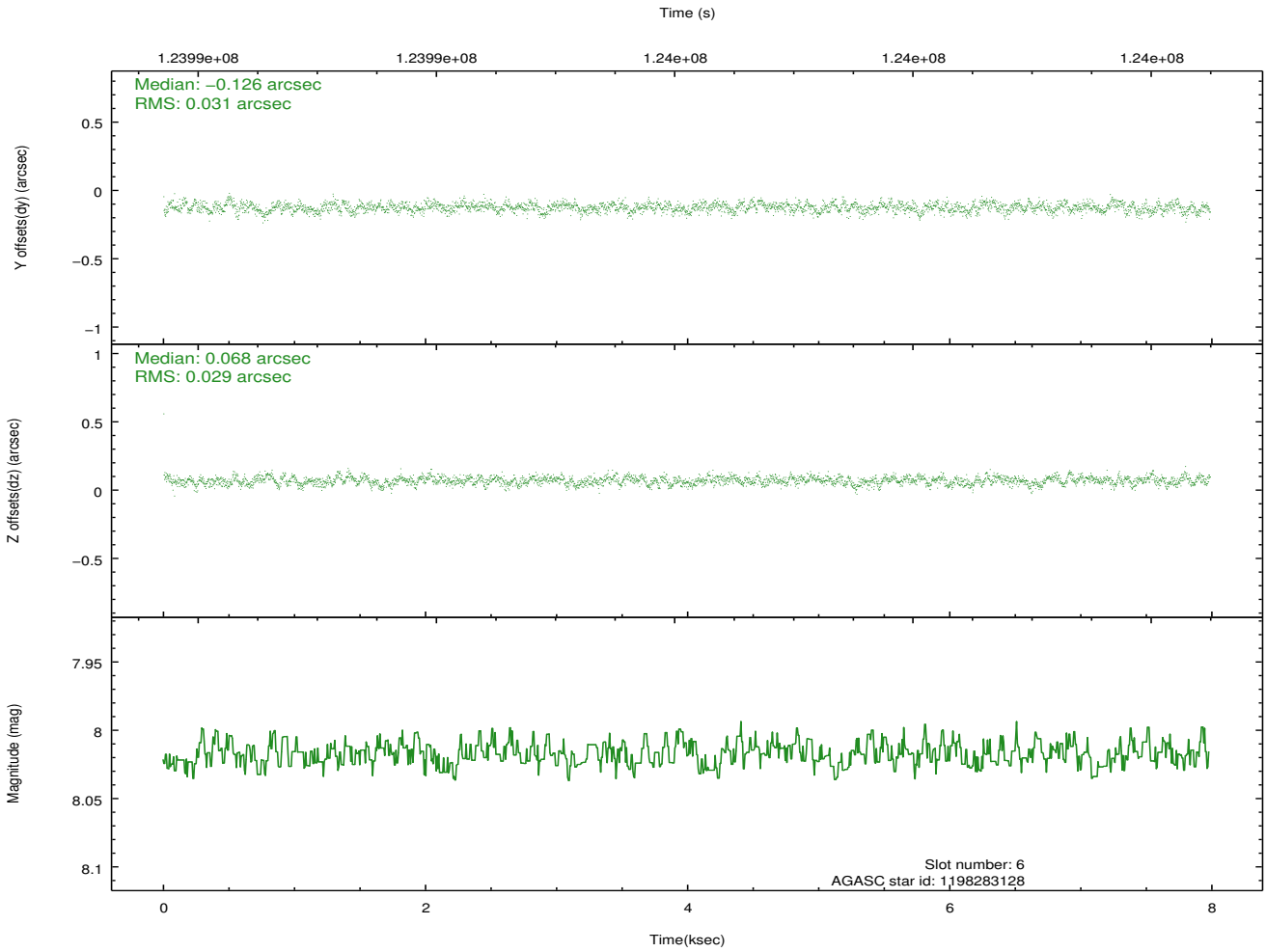
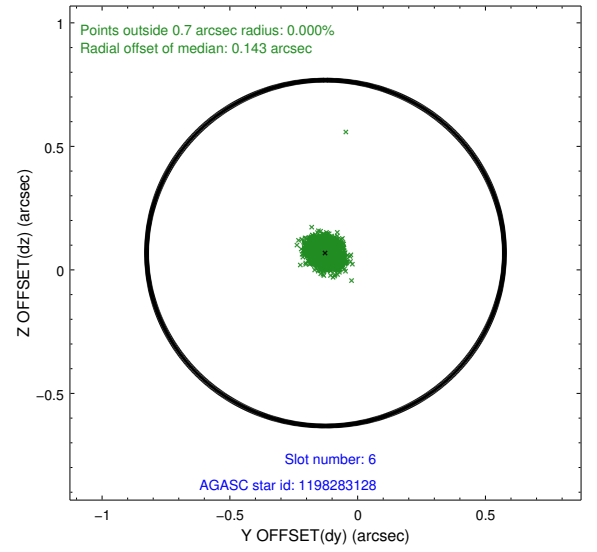
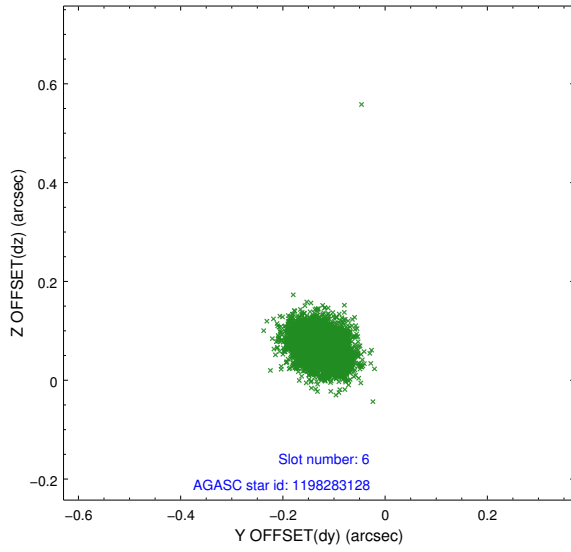
2.4.2 Slot 4



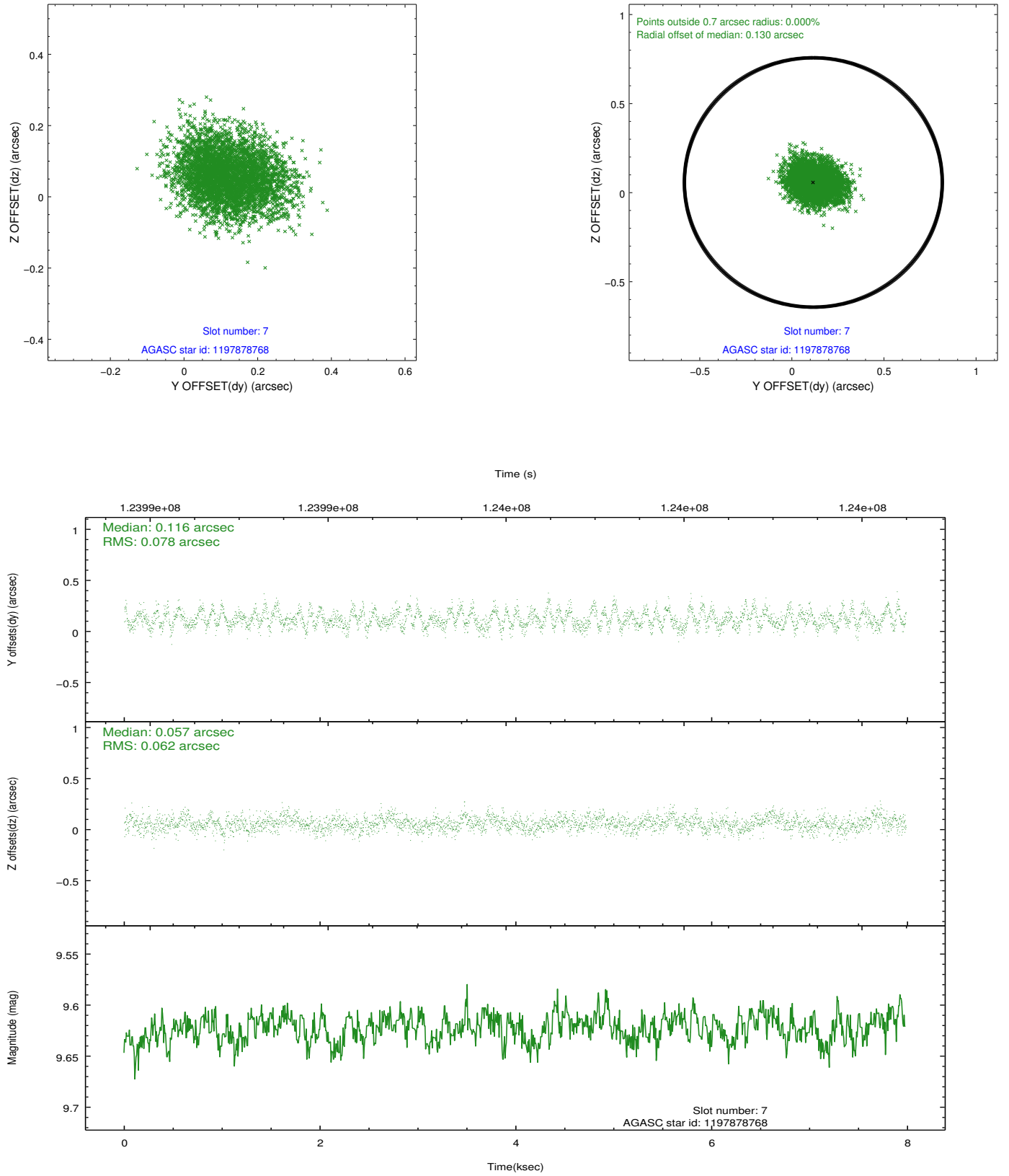
2.4.3 Slot 5



2.4.4 Slot 6

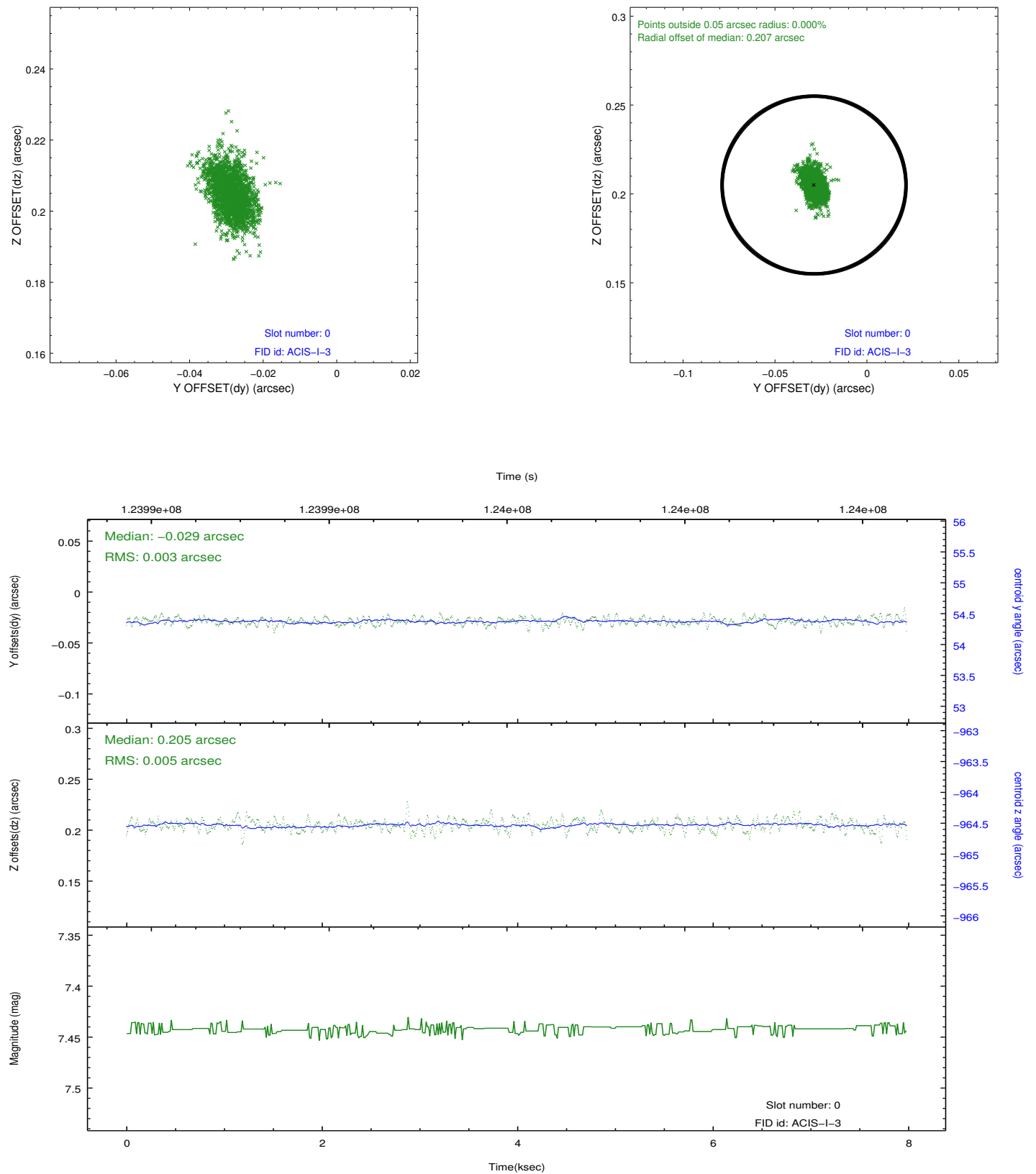


2.4.5 Slot 7

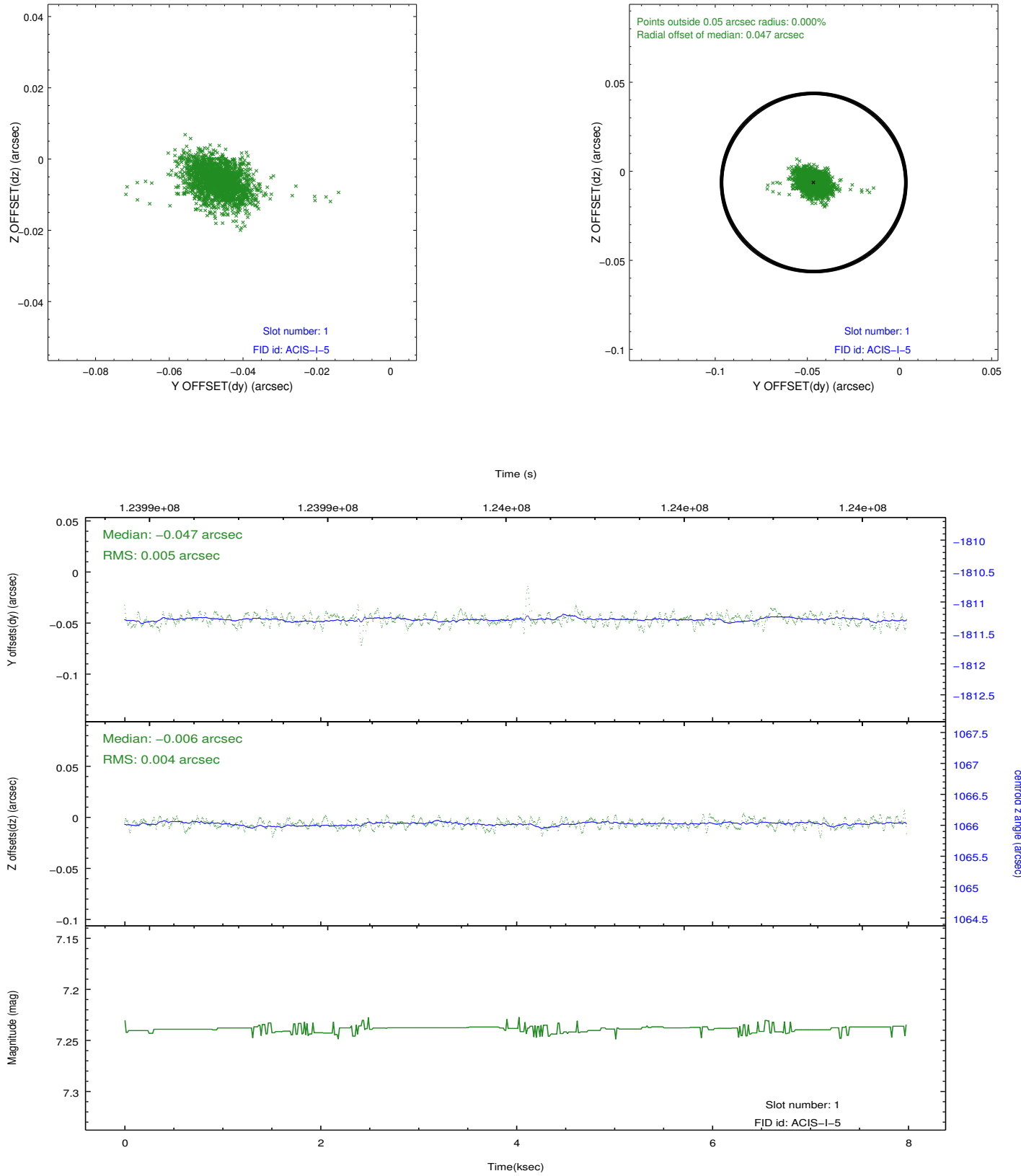


2.5 FID Slots

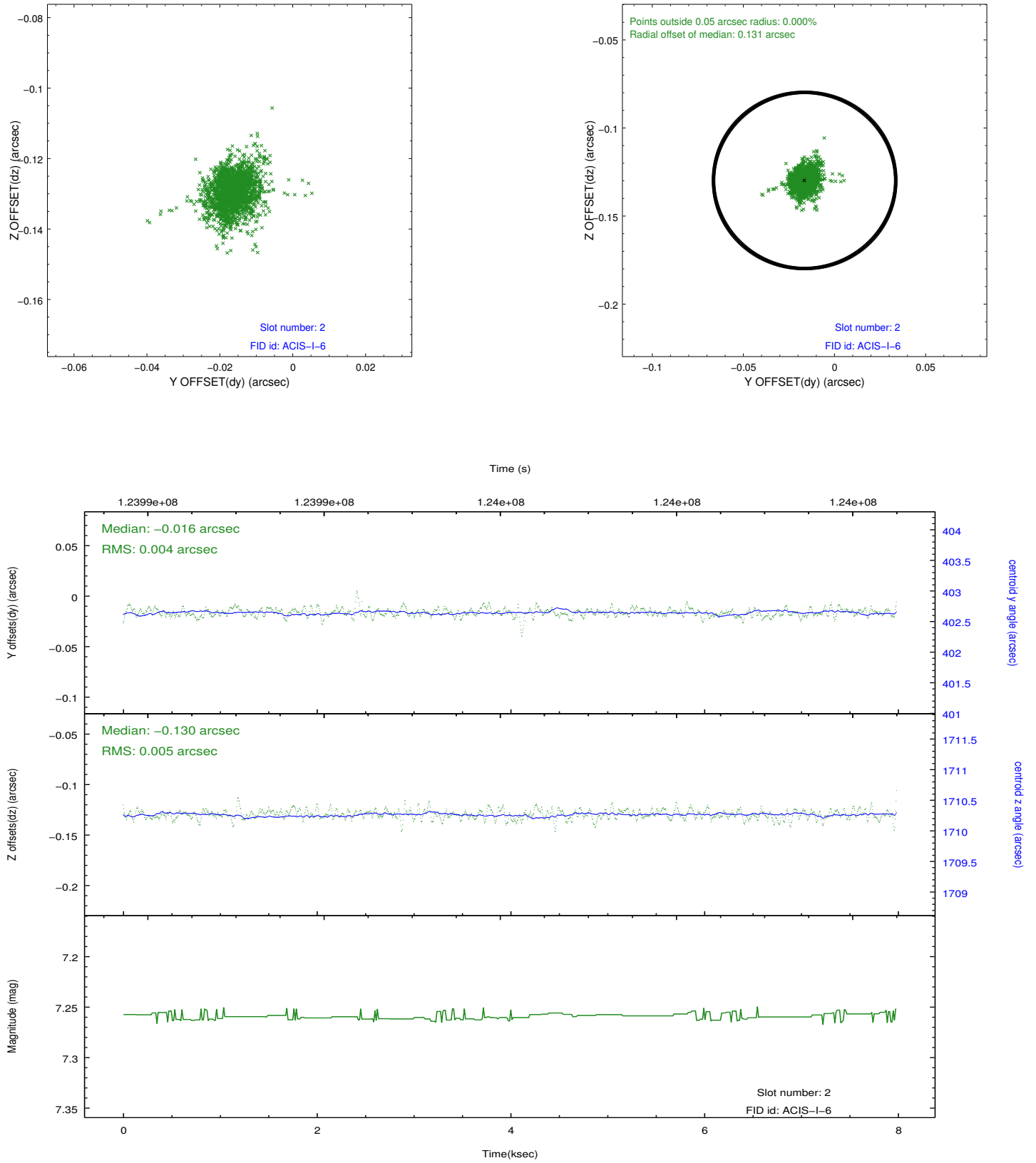
2.5.1 Slot 0



2.5.2 Slot 1



2.5.3 Slot 2



A Summary

A.1 Status

V&V Scientist	Jen Lauer
V&V Date (YYYY-MM-DD)	2012.09.28
V&V Edition	1
V&V Disposition and Status	OK
V&V Charge Time	7.561

A.2 Comments