

V&V Reference Report

L2 ASCDS Version : 7.6.9

Observation 2691 - L2 Version 001
Chandra X-Ray Center

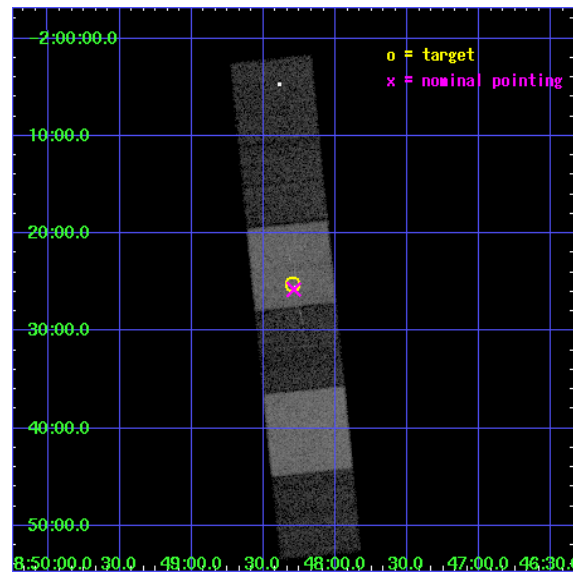
L2 Processing Date : Oct 13 2006

Contents

1	Front	2
2	OBI	3
2.1	OBI	3
2.1.1	Images	3
2.1.2	Bias	3
2.1.3	Parameters	4
2.1.4	Events	4
2.2	Compared Parameters	5
2.3	Aspect	6
2.4	Star Slots	9
2.4.1	Slot 3	9
2.4.2	Slot 4	10
2.4.3	Slot 5	11
2.4.4	Slot 6	12
2.4.5	Slot 7	13
2.5	FID Slots	14
2.5.1	Slot 0	14
2.5.2	Slot 1	15
2.5.3	Slot 2	16
3	Gratings	17
3.1	HEG Arm	17
3.2	MEG Arm	19
A	Summary	21
A.1	Status	21
A.2	Comments	21

1 Front

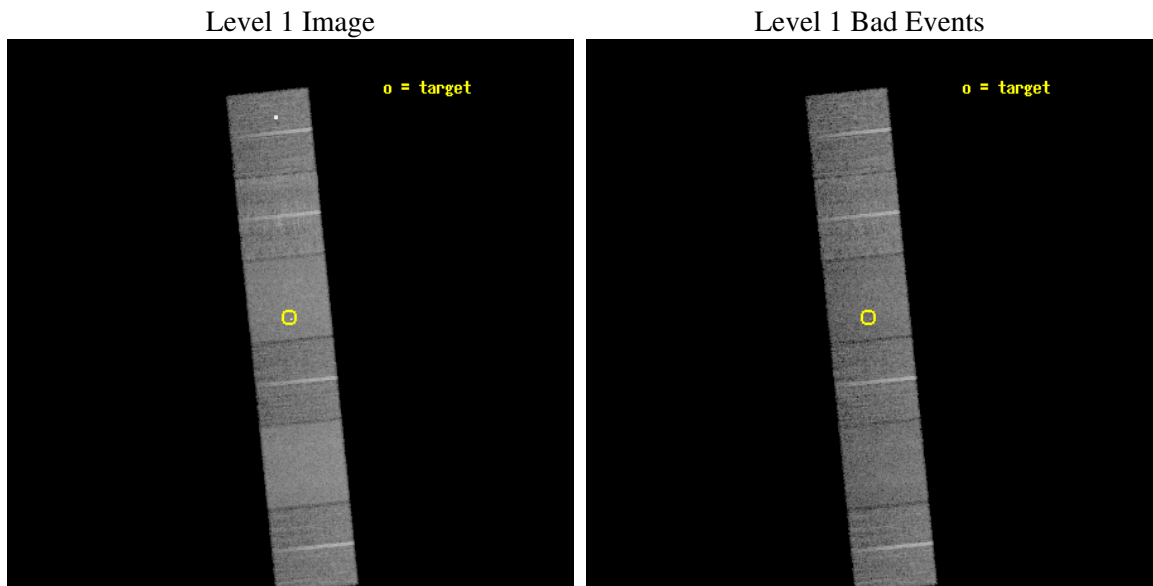
seq_num	400171
obs_id	2691
title	OBSERVATIONS OF THE TRANSIENT X-RAY PULSAR 2S 1845-024
observer	Dr. Mark Finger
object	2S 1845-024
dtcycle	0
cycle	P
ra_targ	282.075
dec_targ	-2.42
ra_nom	282.07232013686
dec_nom	-2.4293309633724
roll_nom	264.13569715364
revision	2
ontime	14755.199945033
livetime	14568.360718814
ontime4	14755.199945033
ontime5	14755.199945033
ontime6	14748.717984557
ontime7	14755.199945033
ontime8	14755.199945033
ontime9	14755.199945033
l2events	144595



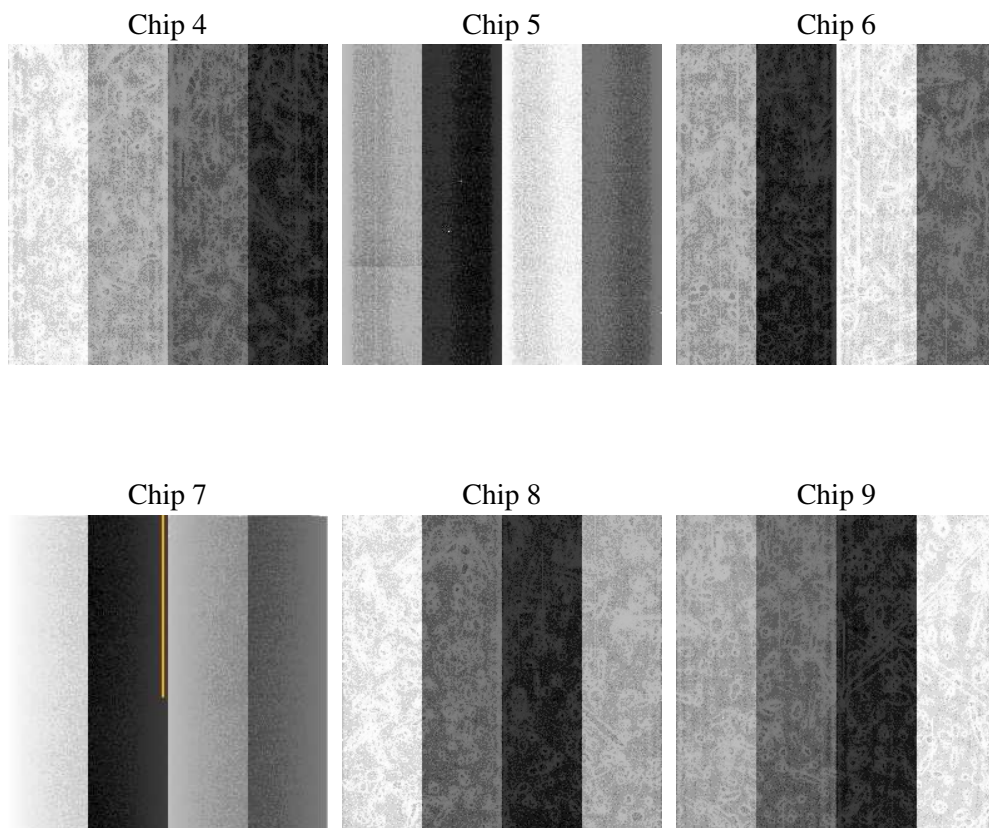
2 OBI

2.1 OBI

2.1.1 Images



2.1.2 Bias



2.1.3 Parameters

obi_num	0
ascdsver	7.6.9
caldbver	3.2.3
date	2006-10-02T22:02:47
revision	2

sched_exp_time	15000.000000
ontime	14759.521569014
ontime4	14759.521519214
ontime5	14759.521549106
ontime6	14753.039578646
ontime7	14759.521569014
ontime8	14759.521409541
ontime9	14759.521539122
l1events	660107

2.1.4 Events

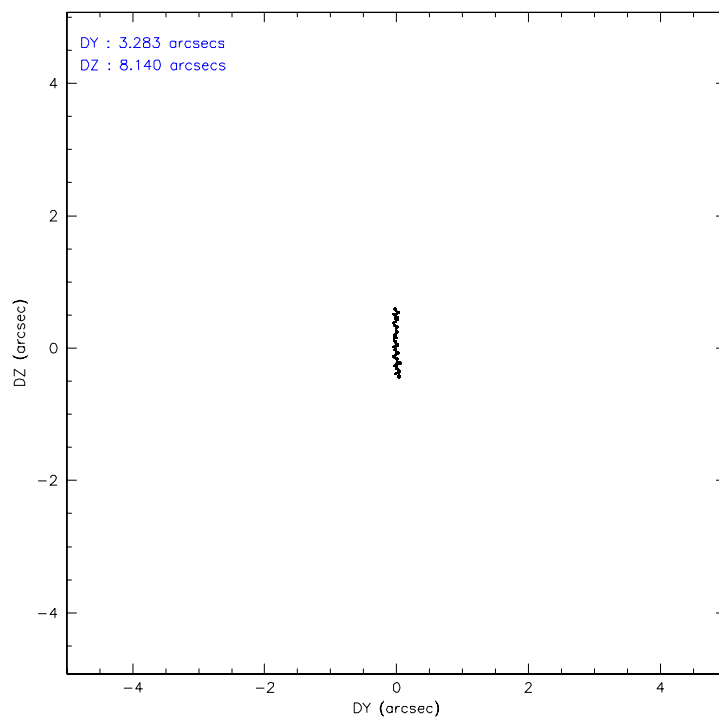
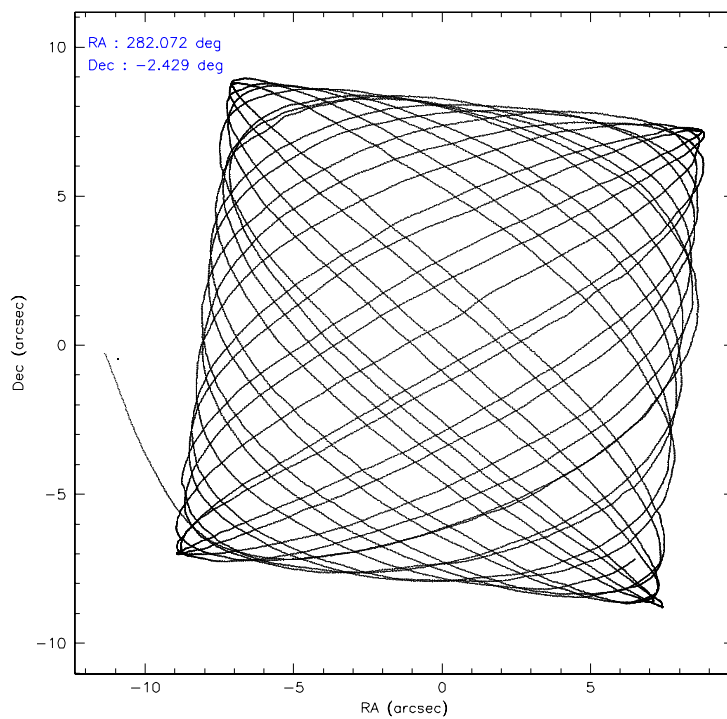
	ccd 4	ccd 5	ccd 6	ccd 7	ccd 8	ccd 9
level 1 events	100785	128829	92500	121507	119053	97433
rejected events	89283	73606	81450	74655	95191	80828
rejected %	88%	57%	88%	61%	79%	82%

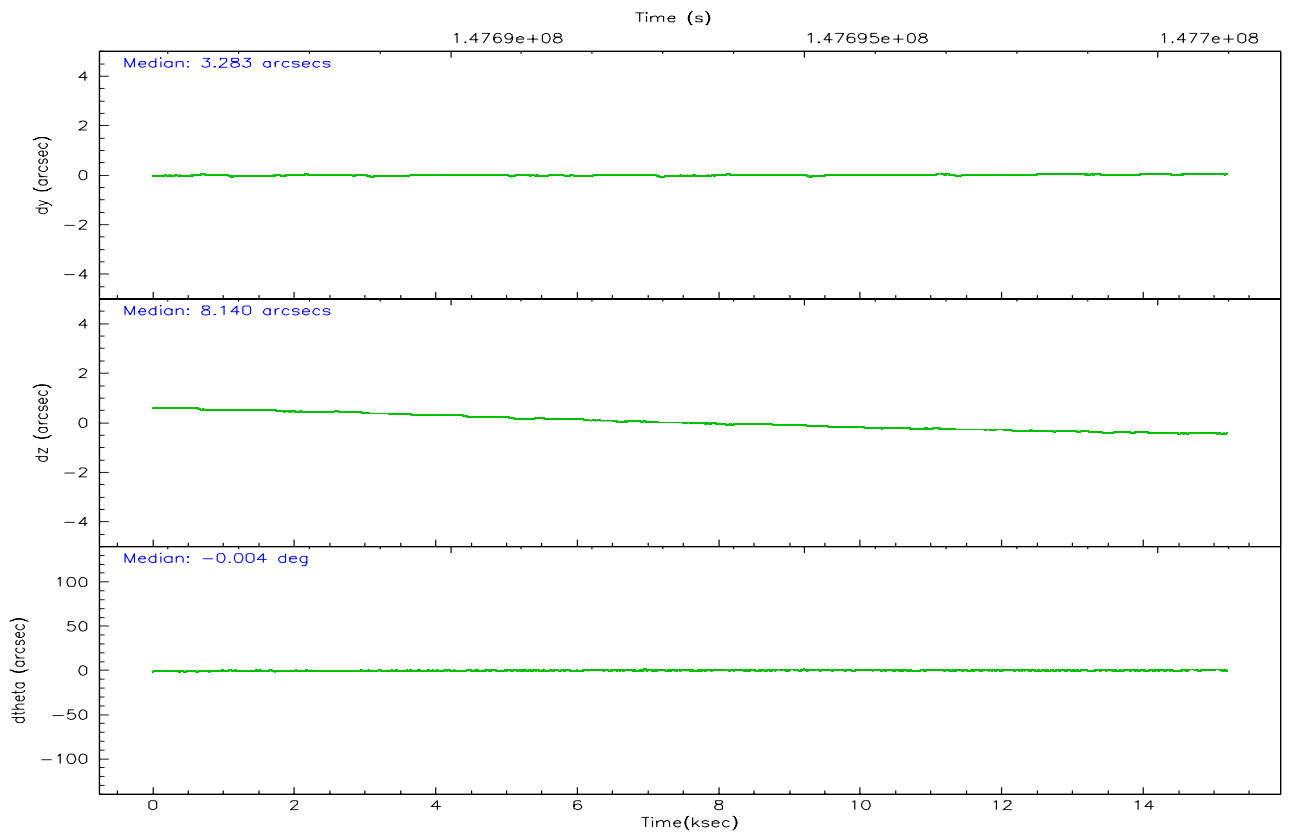
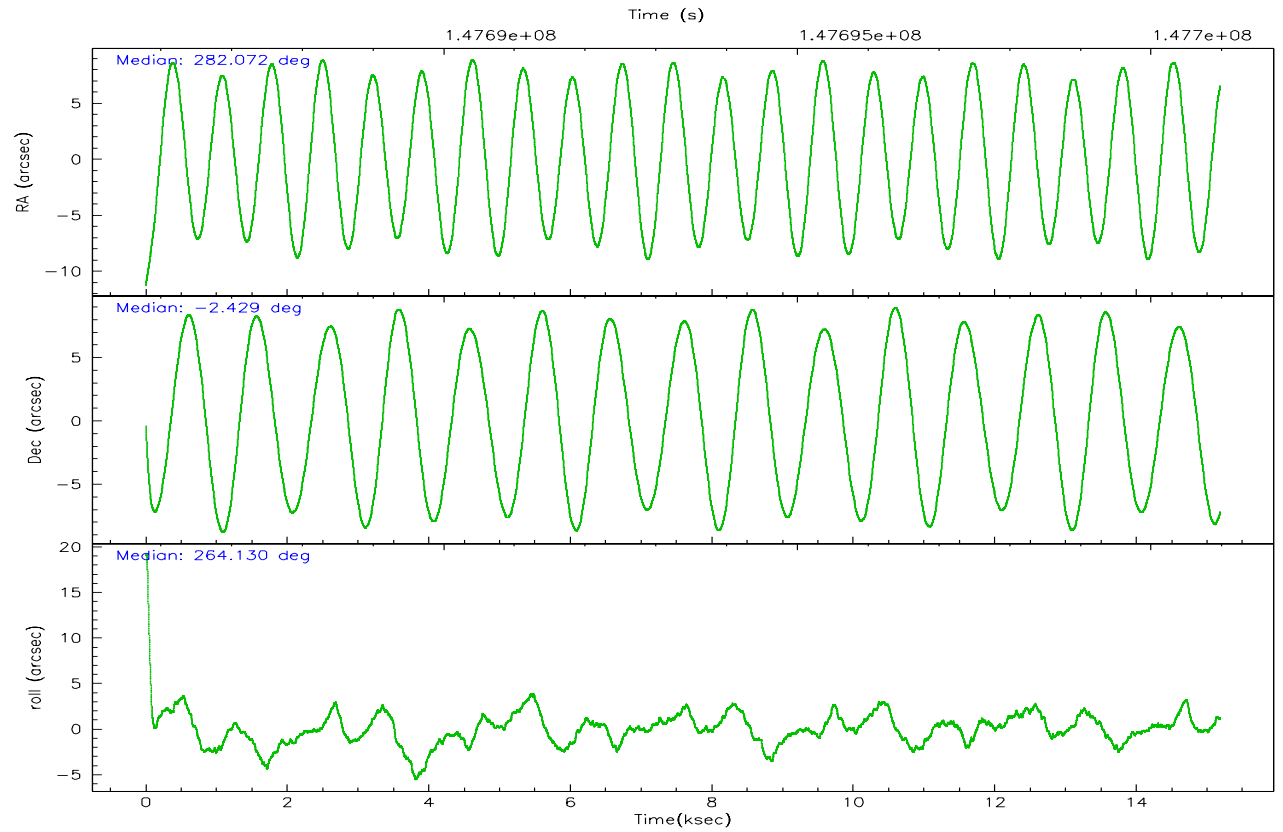
	ccd 4	ccd 5	ccd 6	ccd 7	ccd 8	ccd 9
grade 0 events	5170	1942	4316	2804	7555	10105
	5%	1%	4%	2%	6%	10%
grade 1 events	87	90	53	77	101	103
	0%	0%	0%	0%	0%	0%
grade 2 events	2368	17574	2229	11545	4996	2121
	2%	13%	2%	9%	4%	2%
grade 3 events	1172	1320	1103	2434	2613	1158
	1%	1%	1%	2%	2%	1%
grade 4 events	1086	1271	1075	2408	2486	1109
	1%	0%	1%	1%	2%	1%
grade 5 events	3878	6346	4161	8208	5278	4322
	3%	4%	4%	6%	4%	4%
grade 6 events	1712	33128	2329	27673	6214	2117
	1%	25%	2%	22%	5%	2%
grade 7 events	85312	67158	77234	66358	89810	76398
	84%	52%	83%	54%	75%	78%

2.2 Compared Parameters

Parameter	Planned	Actual	Parameter	Planned	Actual
Instrument	ACIS	ACIS	Obspar format version number	6	6
Detector	ACIS-456789	ACIS-456789	Obspar file type	PREDICTED	ACTUAL
Grating	HETG	HETG	Obspar update status	NONE	UPDATED
Data mode	FAINT	FAINT	Number of optional ACIS chips dropped	0	0
Observation mode	POINTING	POINTING	On-chip summing requested	N	N
Pointing RA	282.060860	282.0723201368576	Subarray requested	NONE	NONE
Pointing Dec	-2.404601	-2.429330963372352	Alternating exposures requested	N	N
Pointing Roll	263.978568	264.135697153644	Primary exposure time	0.000000	3.2
Window start time	147670264.184000	147670264.184000			
Window stop time	147756664.184000	147756664.184000			
SIM focus pos (mm)	-0.684267	-0.6828225247311905			
SIM defocus (mm)	0	0.001444936568705701			
SIM translation stage pos (mm)	-190.132523	-190.1400660498719			
SIM translation stage offset (mm)	0	0.00754346686406393			
Observation start time	147685979.184000	147685173.66082			
Observation start date	2002-09-06T07:51:55	2002-09-06T07:39:33			
Observation end time	147700979.184000	147702137.92402			
Observation end date	2002-09-06T12:01:55	2002-09-06T12:22:17			
Read mode	TIMED	TIMED			

2.3 Aspect



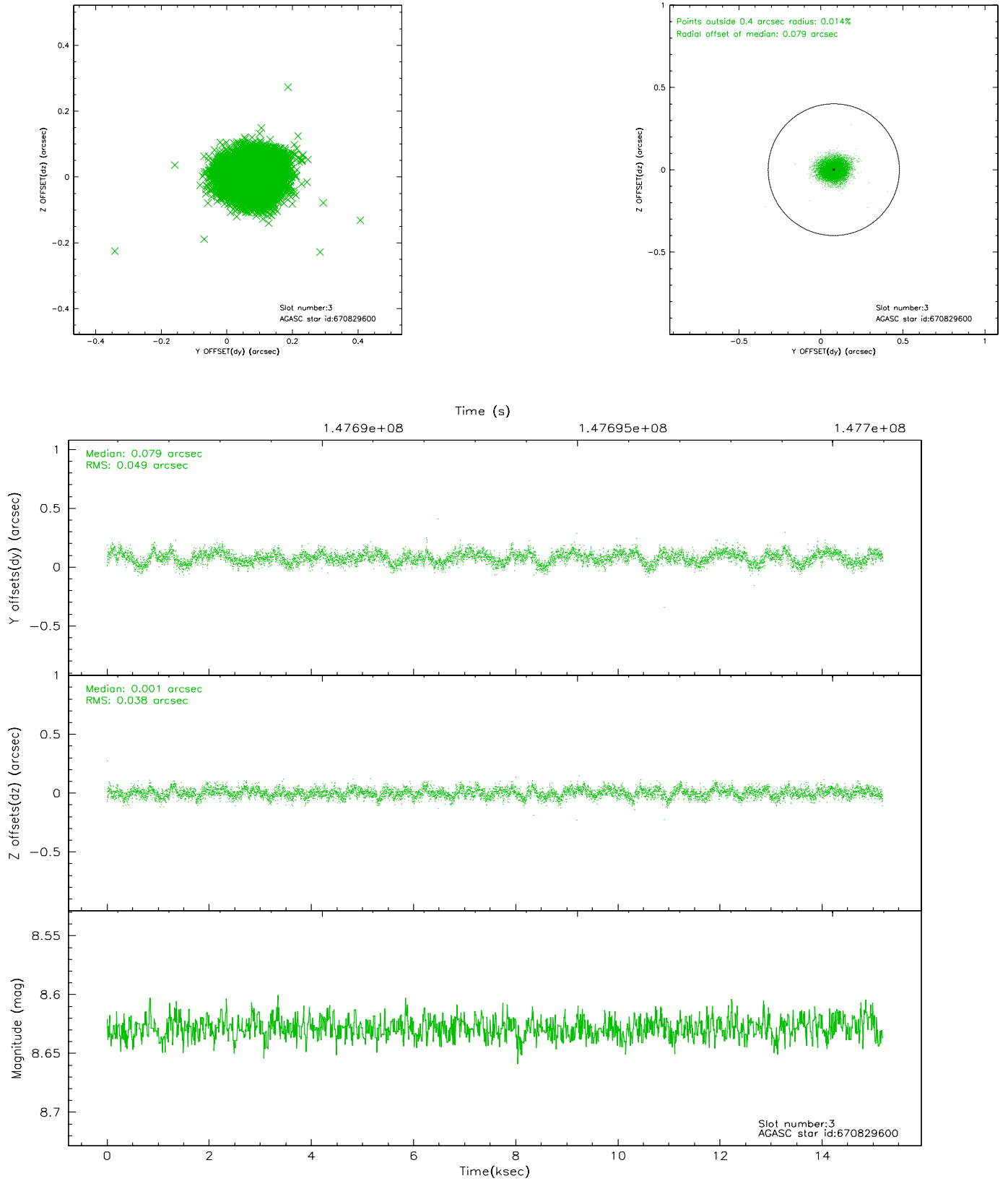


Slot Statistics

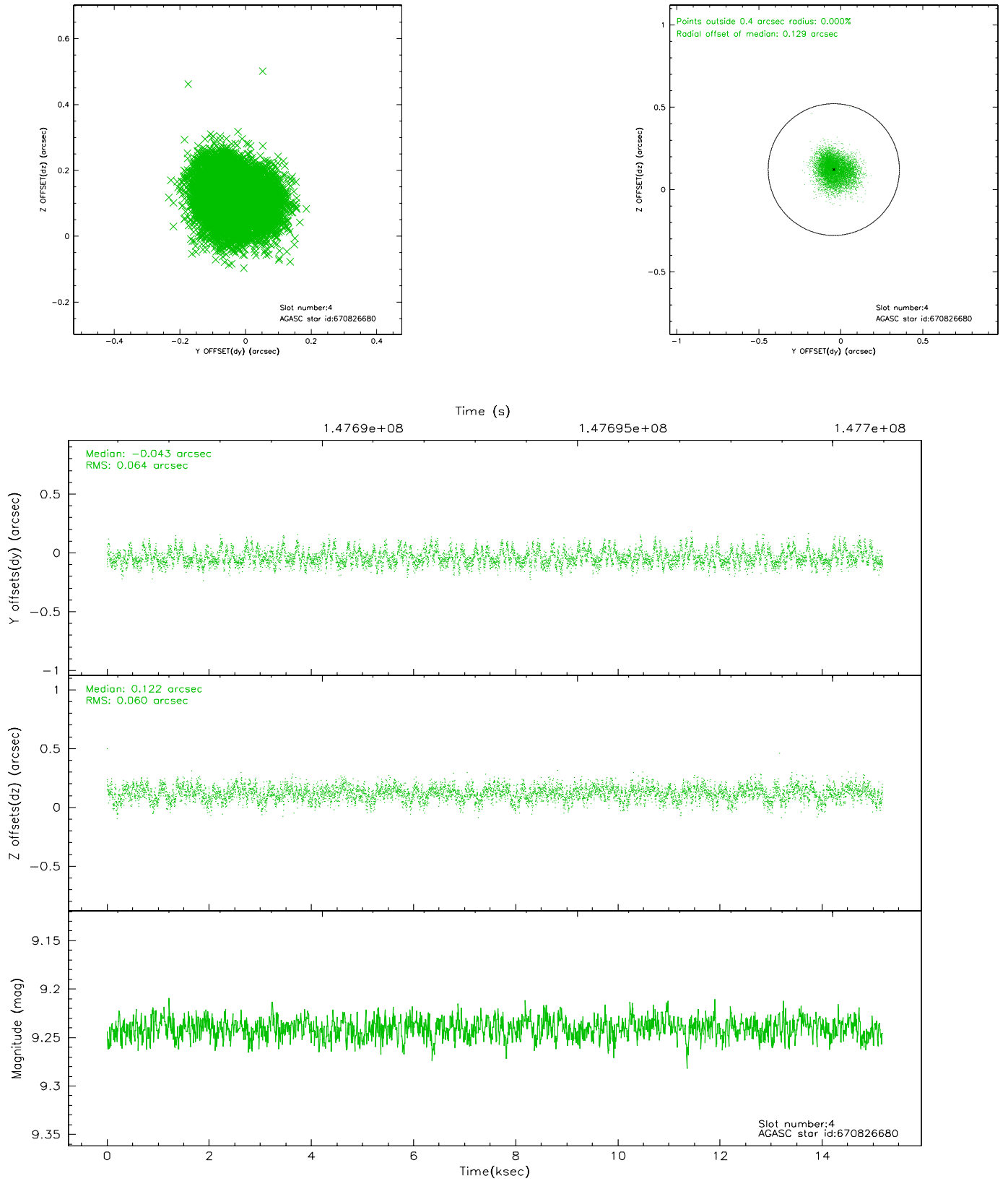
slot	status	id	mag	n_pts	med_dy	med_dz	dr1	dr2	ra	dec	mean_y	mean_z
0	FID	ACIS-S-2	7.11	3704	0.005	0.017	0.008	0.013	0.000000	0.000000	-755.94	-1729.35
1	FID	ACIS-S-4	7.20	3704	-0.040	-0.007	0.006	0.012	0.000000	0.000000	2157.17	178.79
2	FID	ACIS-S-5	7.24	3704	0.004	-0.001	0.006	0.010	0.000000	0.000000	-1808.39	172.83
3	GUIDE	670829600	8.63	7406	0.079	0.001	0.066	0.105	282.227270	-3.031765	2182.80	832.58
4	GUIDE	670826680	9.24	7407	-0.043	0.122	0.095	0.149	282.619566	-2.432067	-111.84	2009.60
5	GUIDE	670827744	9.53	7395	0.015	-0.158	0.095	0.151	281.699180	-2.020401	-1238.51	-1438.65
6	GUIDE	670826608	9.23	7408	0.015	0.102	0.095	0.150	282.595495	-2.141533	-1143.42	1813.76
7	GUIDE	670827280	9.41	7407	-0.067	-0.067	0.116	0.185	281.434708	-1.976010	-1297.23	-2401.76

2.4 Star Slots

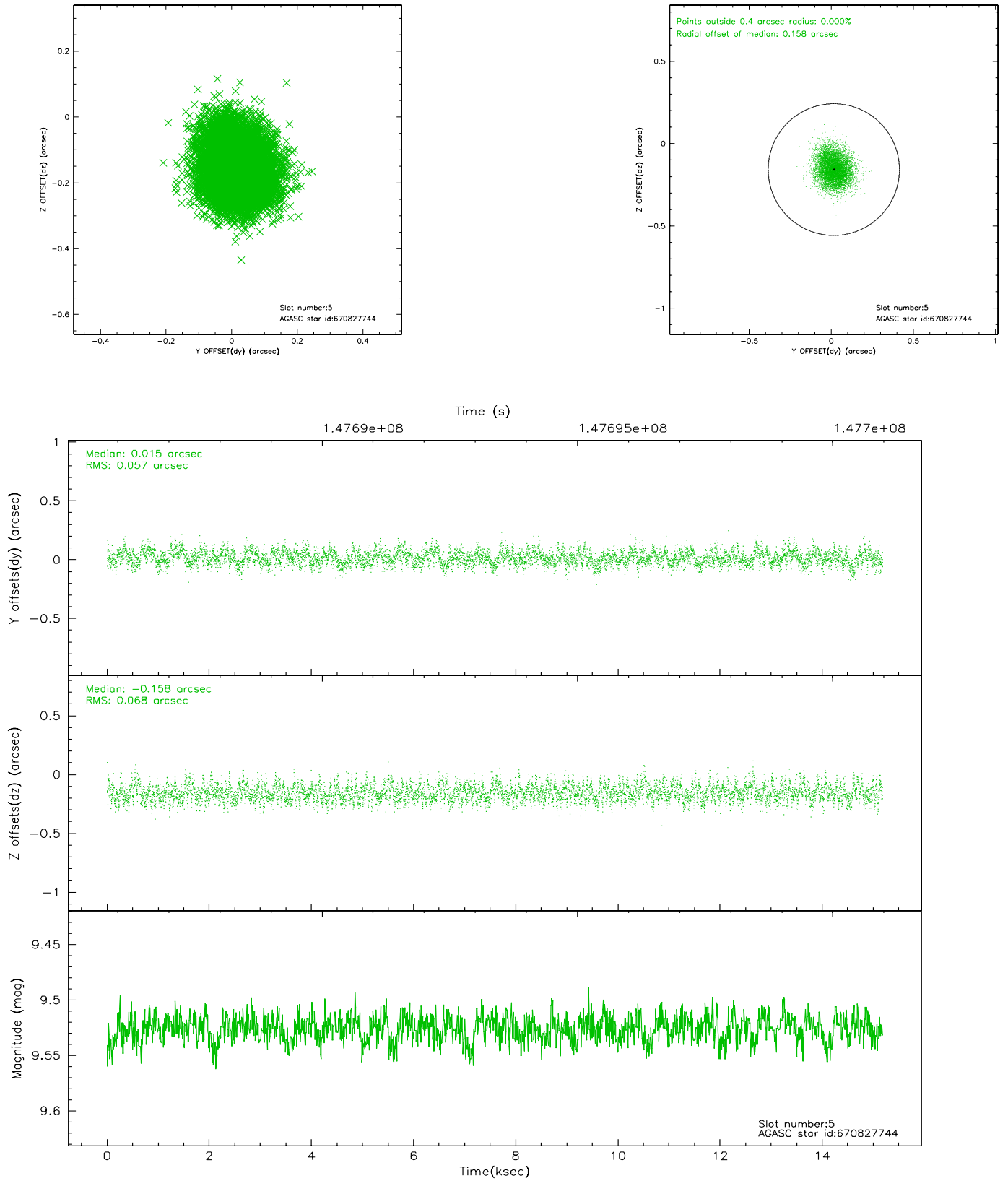
2.4.1 Slot 3



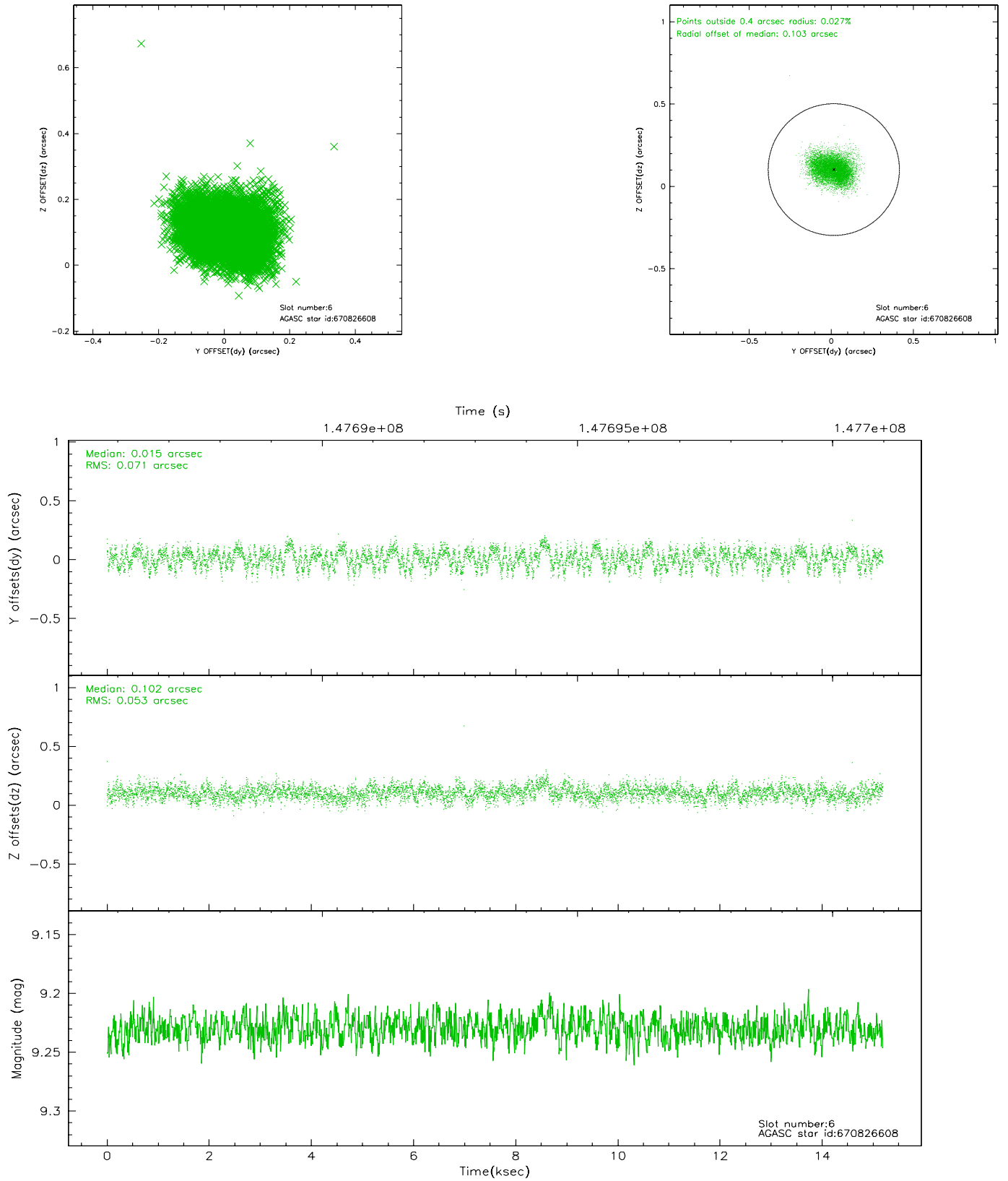
2.4.2 Slot 4



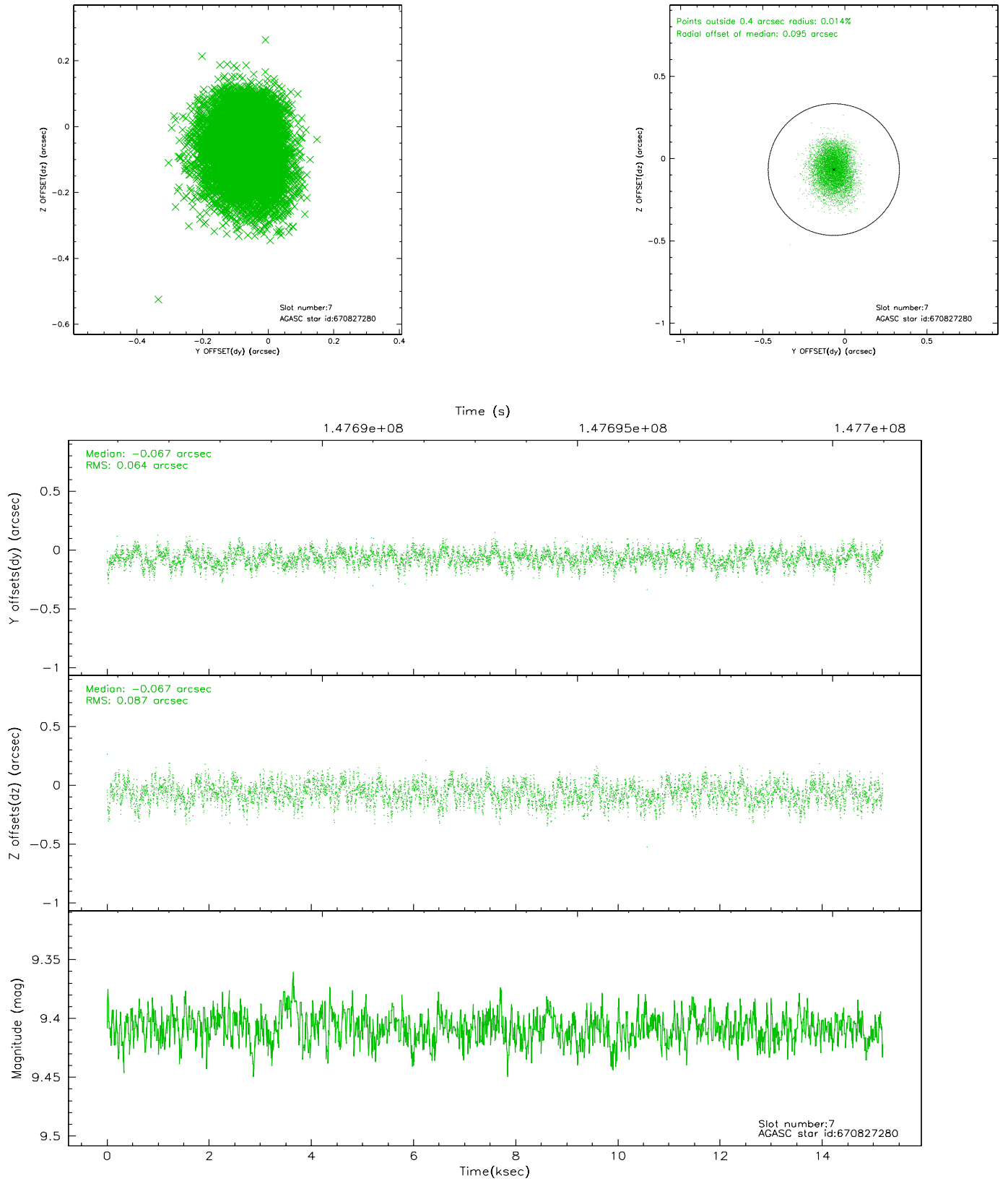
2.4.3 Slot 5



2.4.4 Slot 6

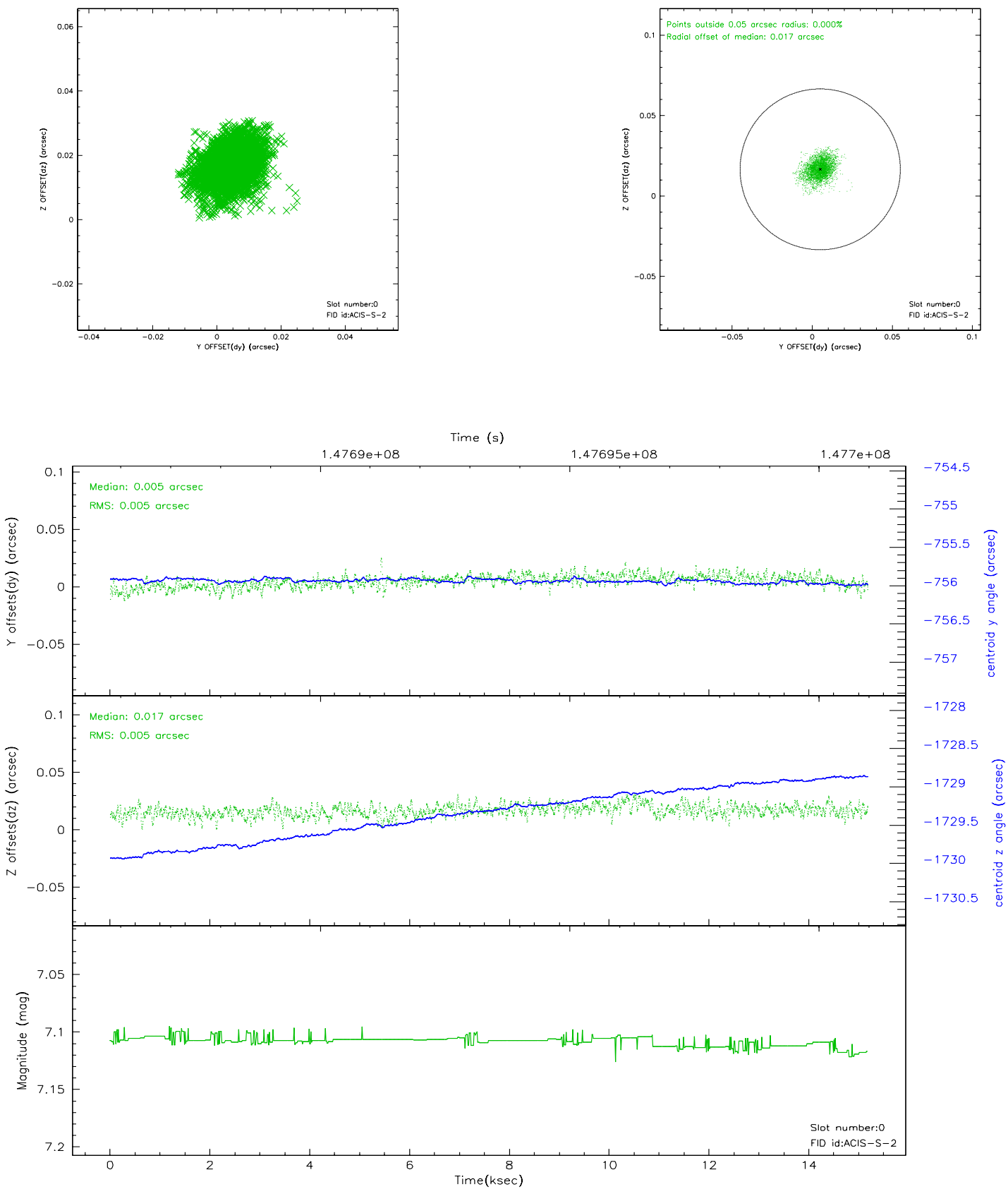


2.4.5 Slot 7

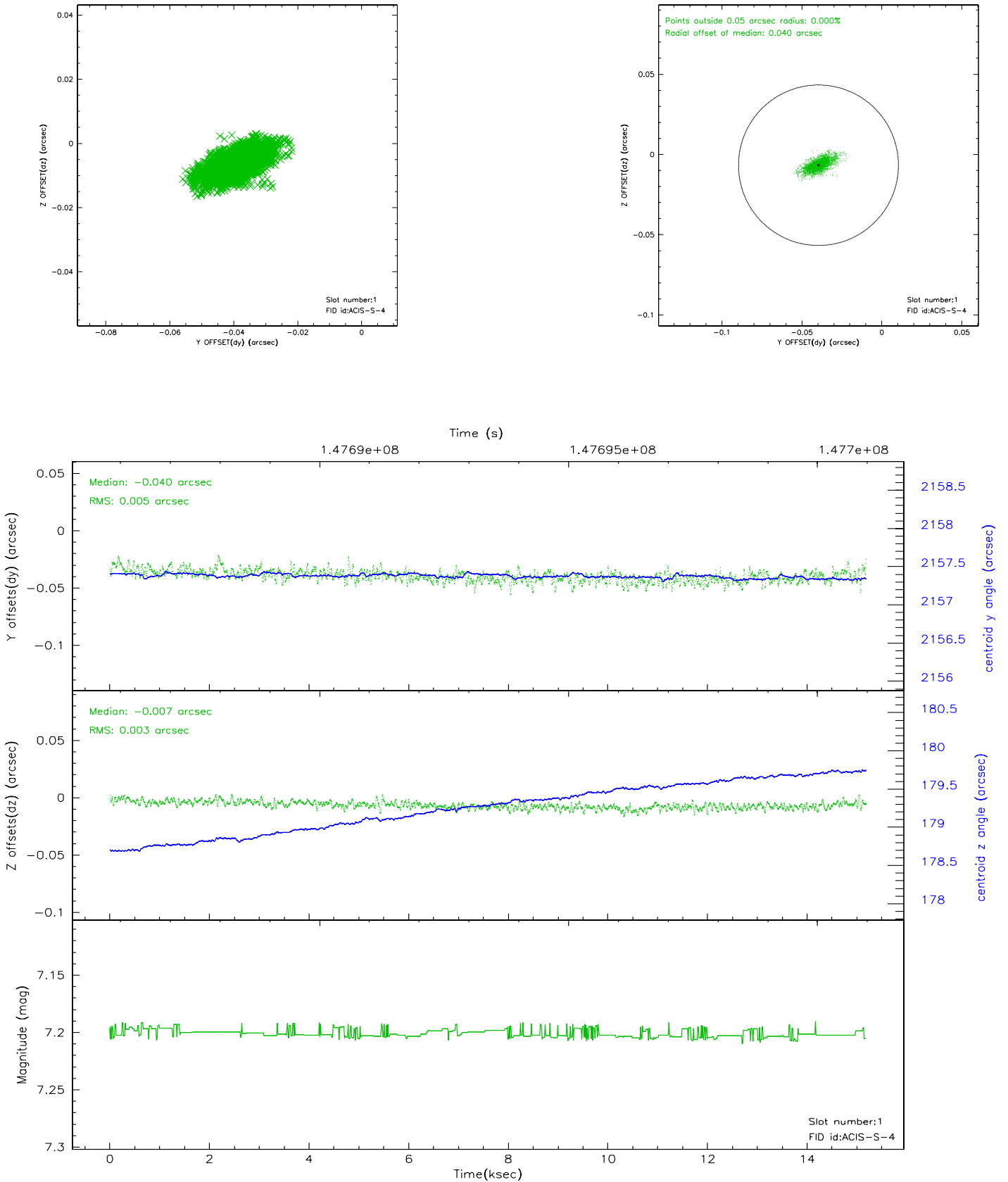


2.5 FID Slots

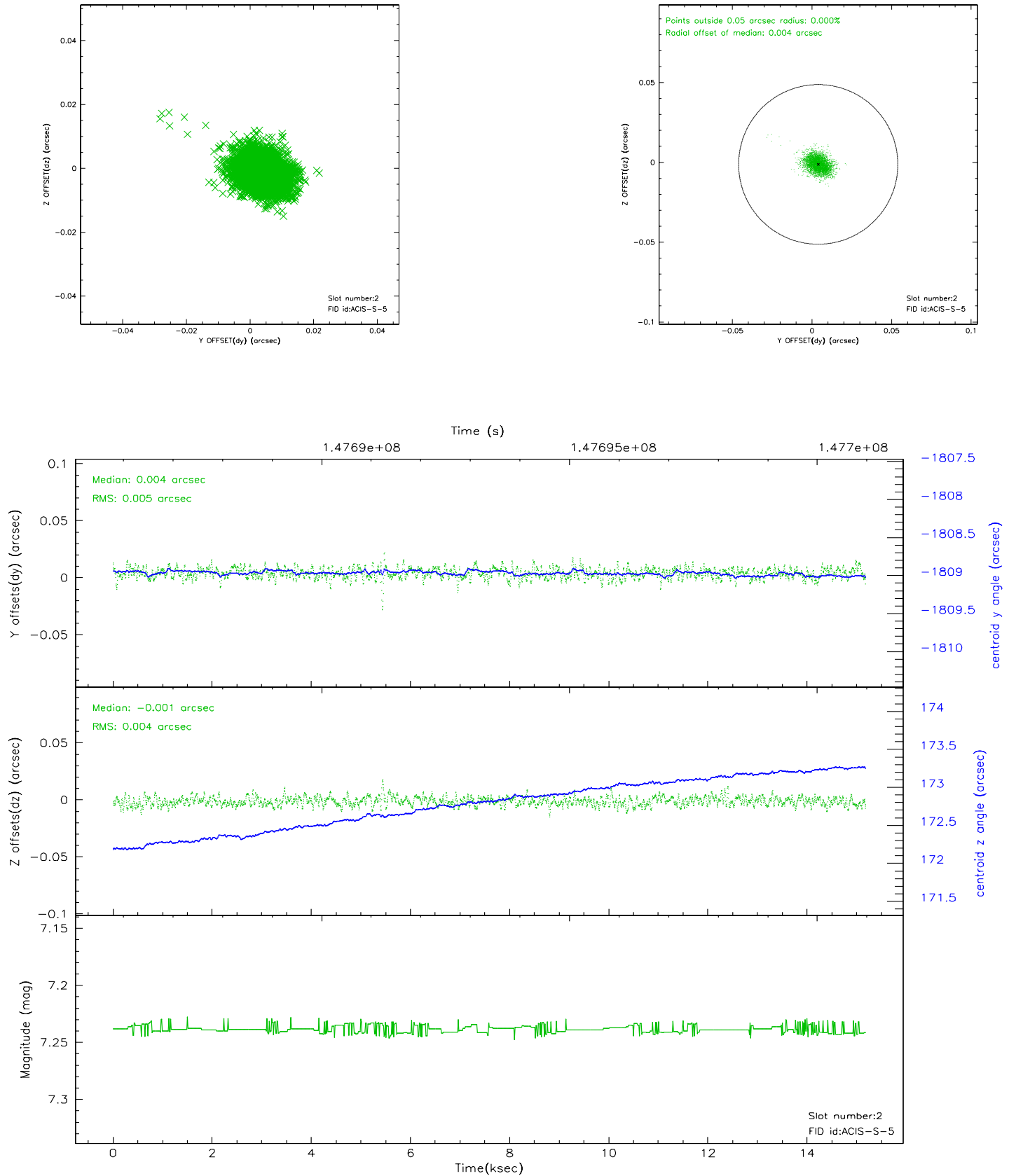
2.5.1 Slot 0



2.5.2 Slot 1

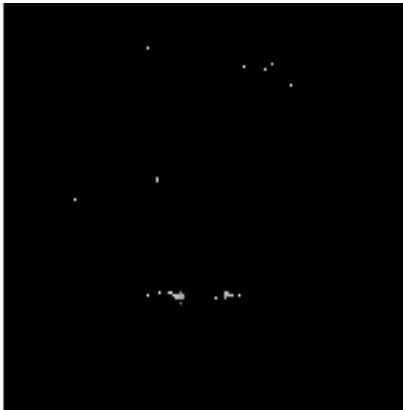


2.5.3 Slot 2

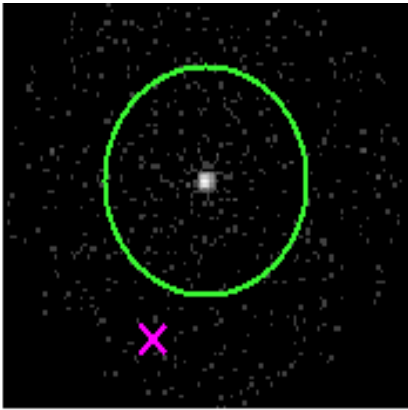


3 Gratings

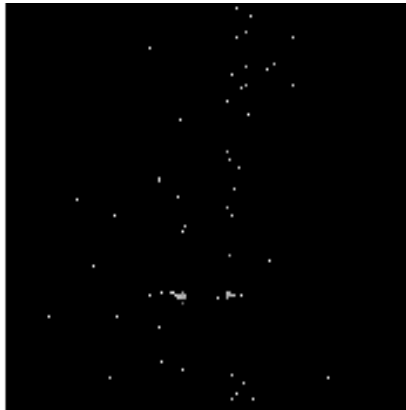
3.1 HEG Arm



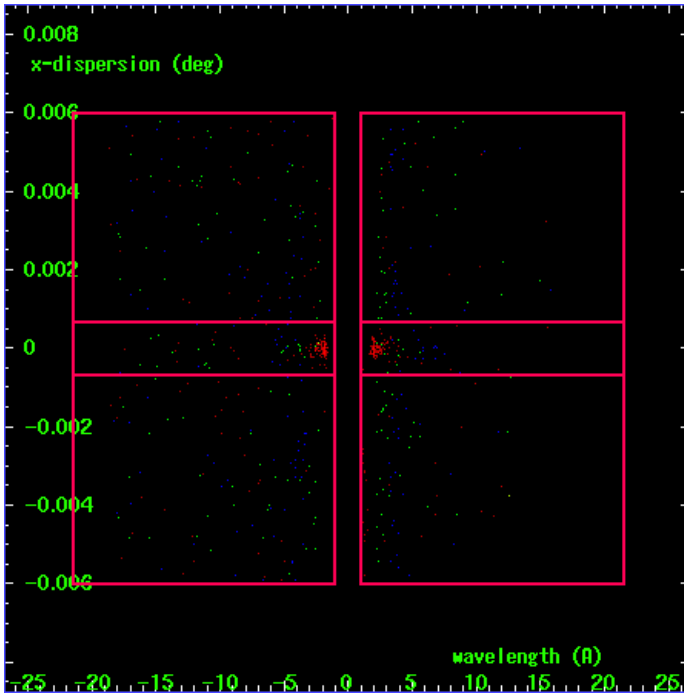
HEG Order Sort 123



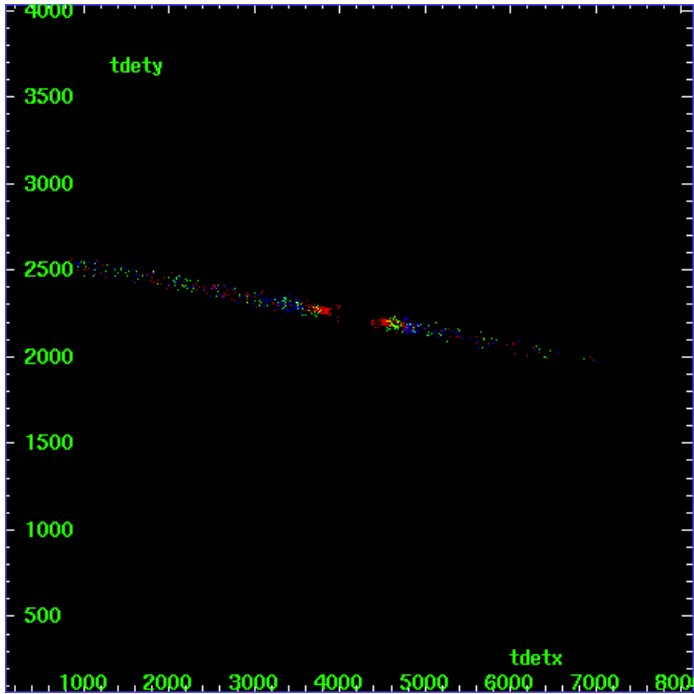
HEG Zero Order



HEG Order Sort ALL

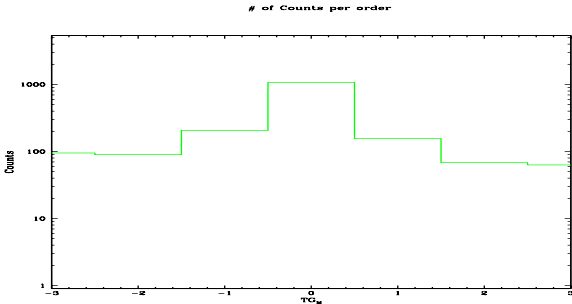


Spot Image HEG

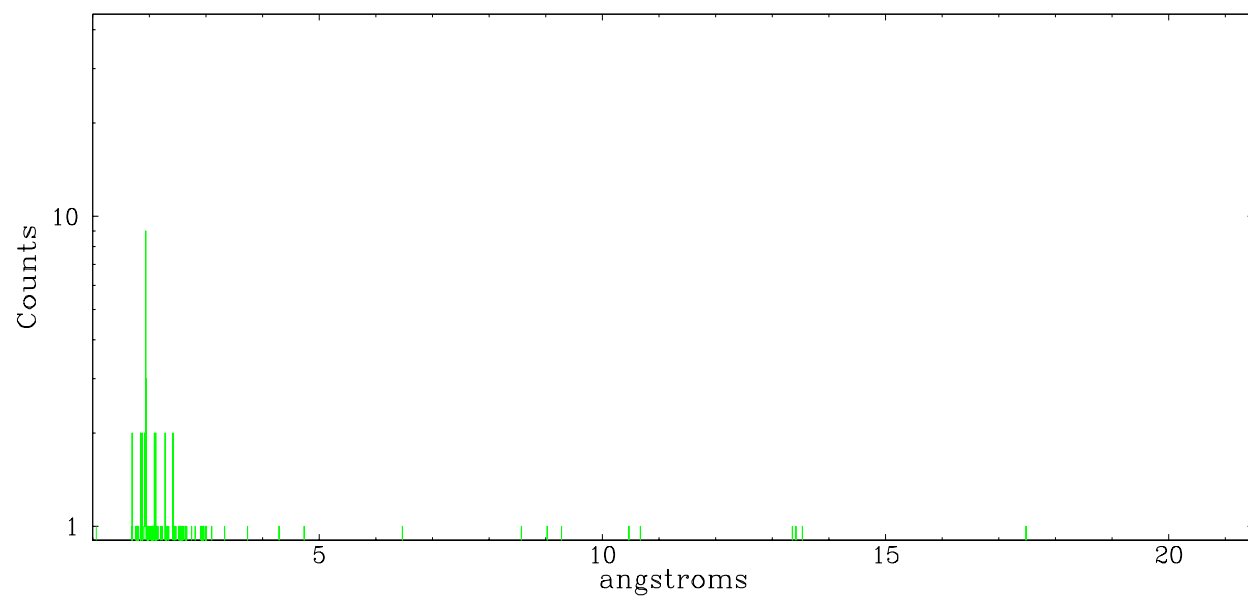


Full Detector HEG

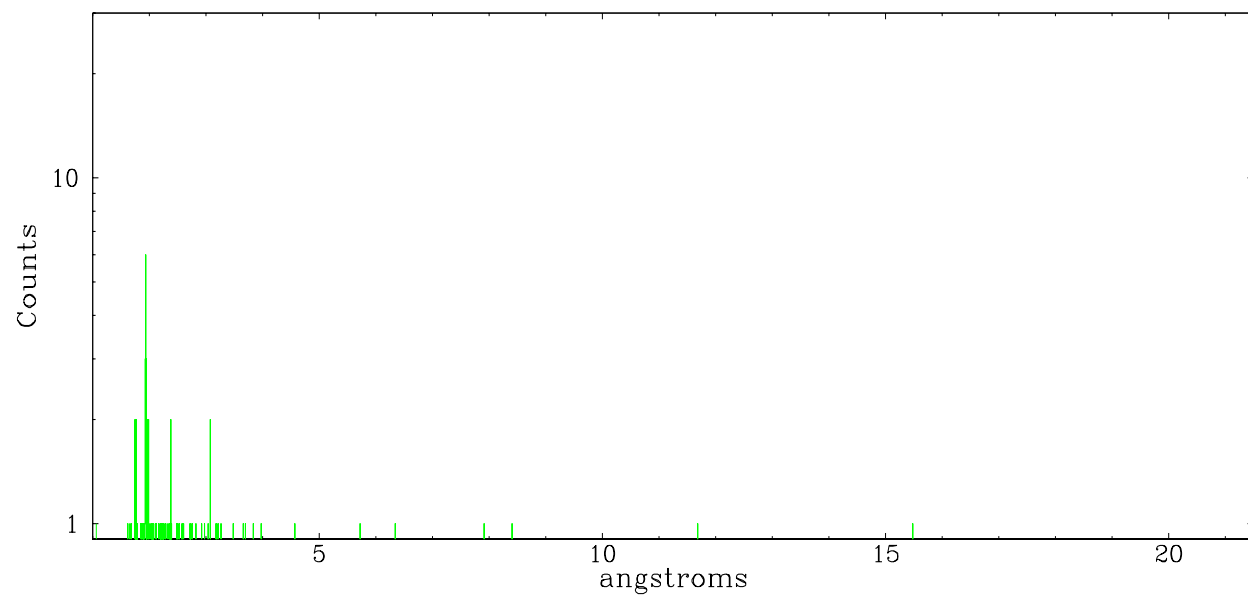
	order -3	order -2	order -1	order 0	order 1	order 2	order 3
Events	95	90	206	1070	156	68	63



heg order -1



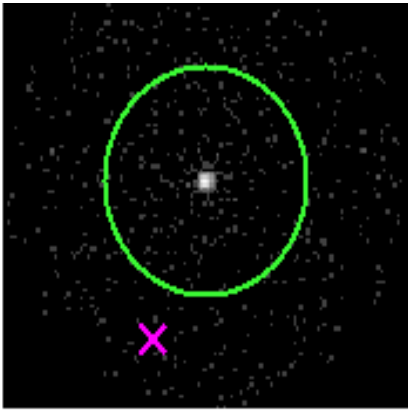
neg order +1



3.2 MEG Arm



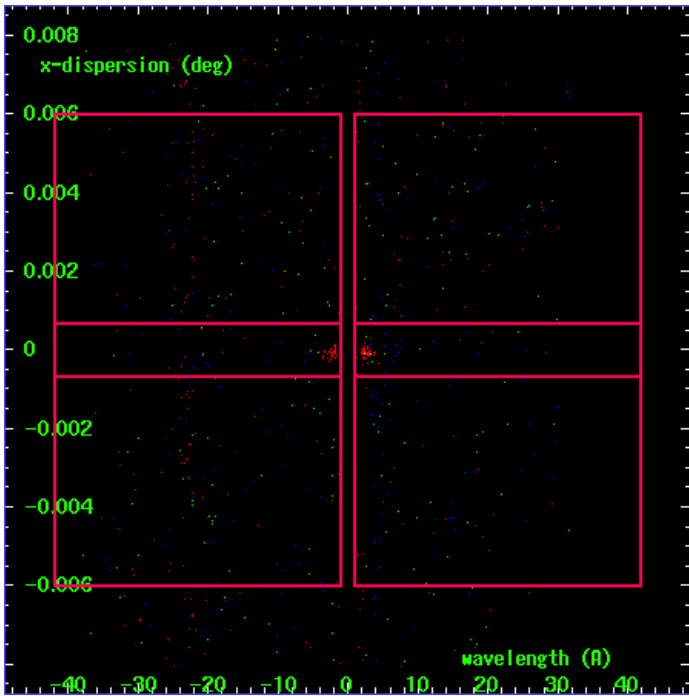
MEG Order Sort 123



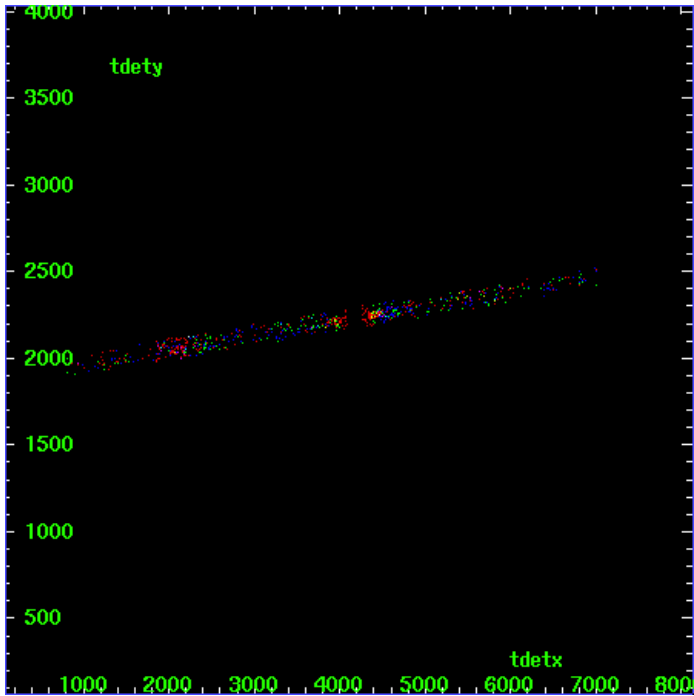
MEG Zero Order



MEG Order Sort ALL

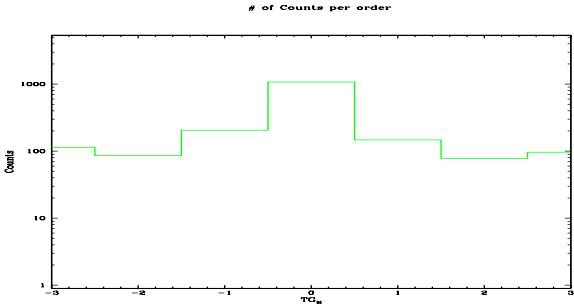


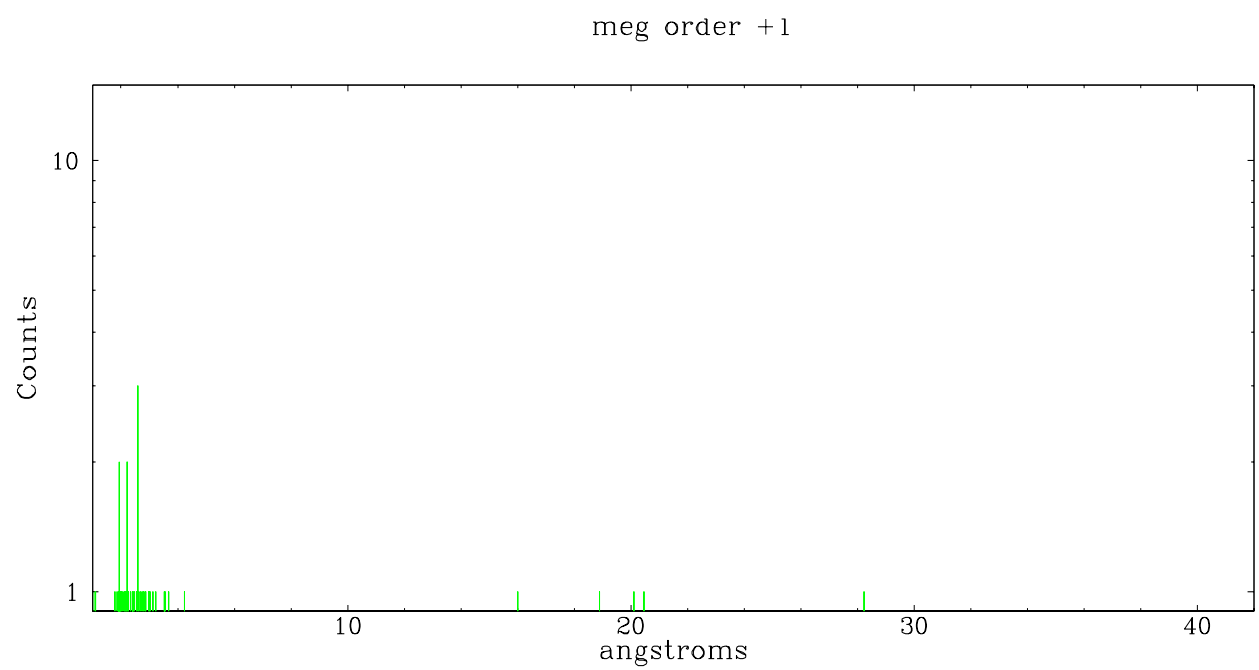
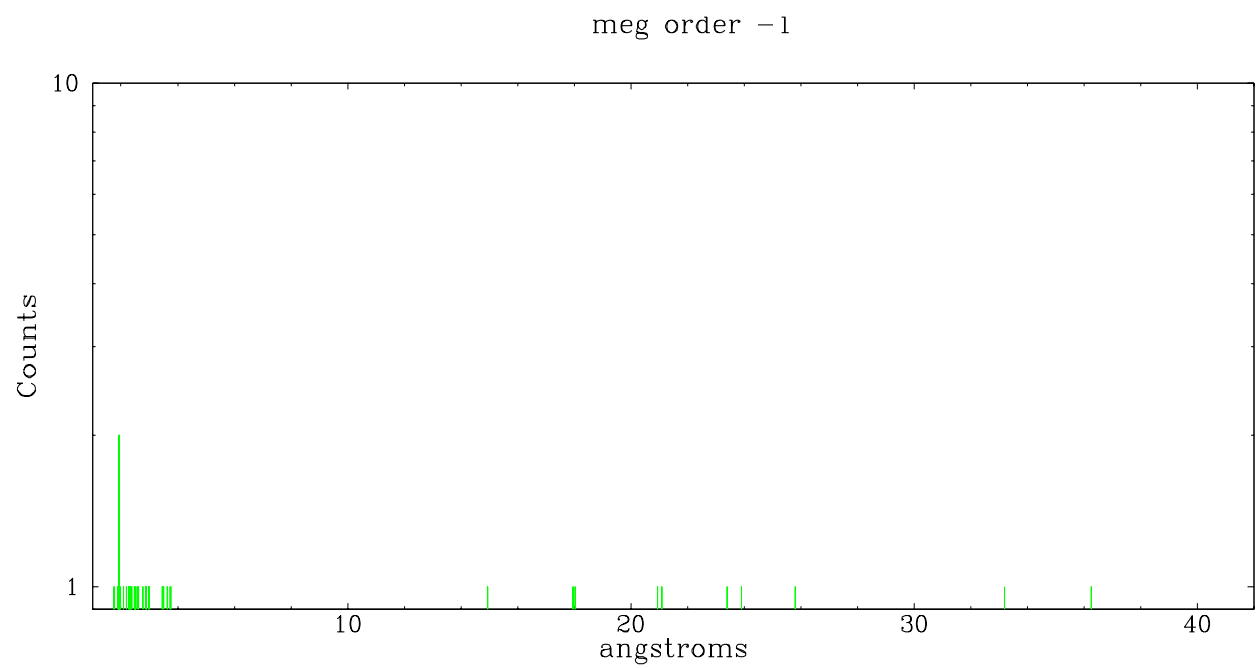
Spot Image MEG



Full Detector MEG

	order -3	order -2	order -1	order 0	order 1	order 2	order 3
Events	113	86	205	1070	147	78	96





A Summary

A.1 Status

V&V Scientist	Beth Sundheim
V&V Date (YYYY-MM-DD)	2006.10.13
V&V Edition	1
V&V Disposition and Status	OK
V&V Charge Time	14.755

A.2 Comments

Window constraint OK.