

V&V Reference Report

L2 ASCDS Version : 7.6.9

Observation 2521 - L2 Version 001
Chandra X-Ray Center

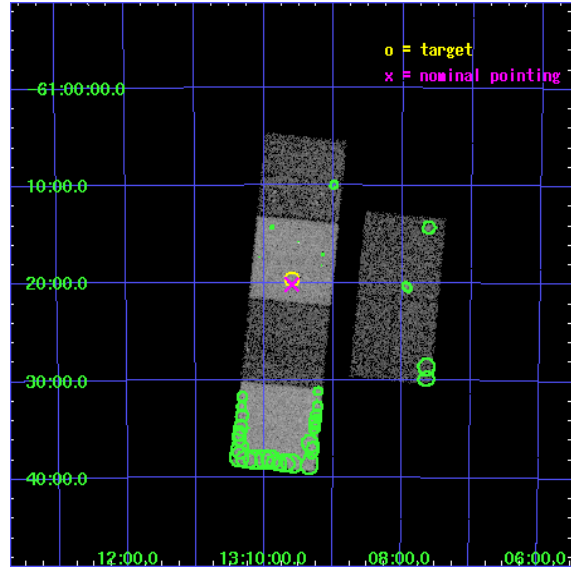
L2 Processing Date : Sep 19 2006

Contents

1	Front	2
2	OBI	3
2.1	OBI	3
2.1.1	Images	3
2.1.2	Bias	3
2.1.3	Parameters	4
2.1.4	Events	4
2.2	Compared Parameters	5
2.3	Aspect	6
2.4	Star Slots	9
2.4.1	Slot 3	9
2.4.2	Slot 4	10
2.4.3	Slot 5	11
2.4.4	Slot 6	12
2.4.5	Slot 7	13
2.5	FID Slots	14
2.5.1	Slot 0	14
2.5.2	Slot 1	15
2.5.3	Slot 2	16
3	Point Sources	17
A	Summary	18
A.1	Status	18
A.2	Comments	18

1 Front

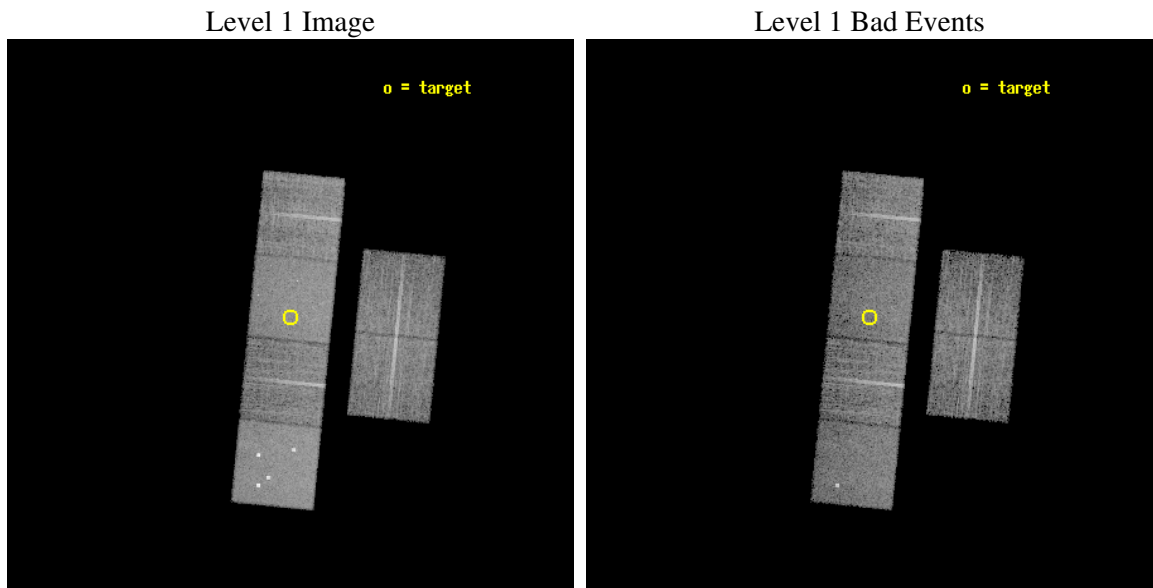
seq_num	200129
obs_id	2521
title	A YSO-LIKE PULSED ASTROPHYSICAL JET AND BIPOLAR NEBULA IN A DYING STAR: WFPC2/STIS STUDY OF HE2-90
observer	Dr. Raghvendra Sahai
object	HEN2-90
dtcycle	0
cycle	P
ra_targ	197.401667
dec_targ	-61.32675
ra_nom	197.39998088221
dec_nom	-61.336348703324
roll_nom	275.63620250645
revision	2
ontime	9439.9999648333
livetime	9320.465001193
ontime2	9439.9999648333
ontime3	9439.9999648333
ontime5	9439.9999648333
ontime6	9436.7589945495
ontime7	9439.9999648333
ontime8	9439.9999648333
l2events	91148



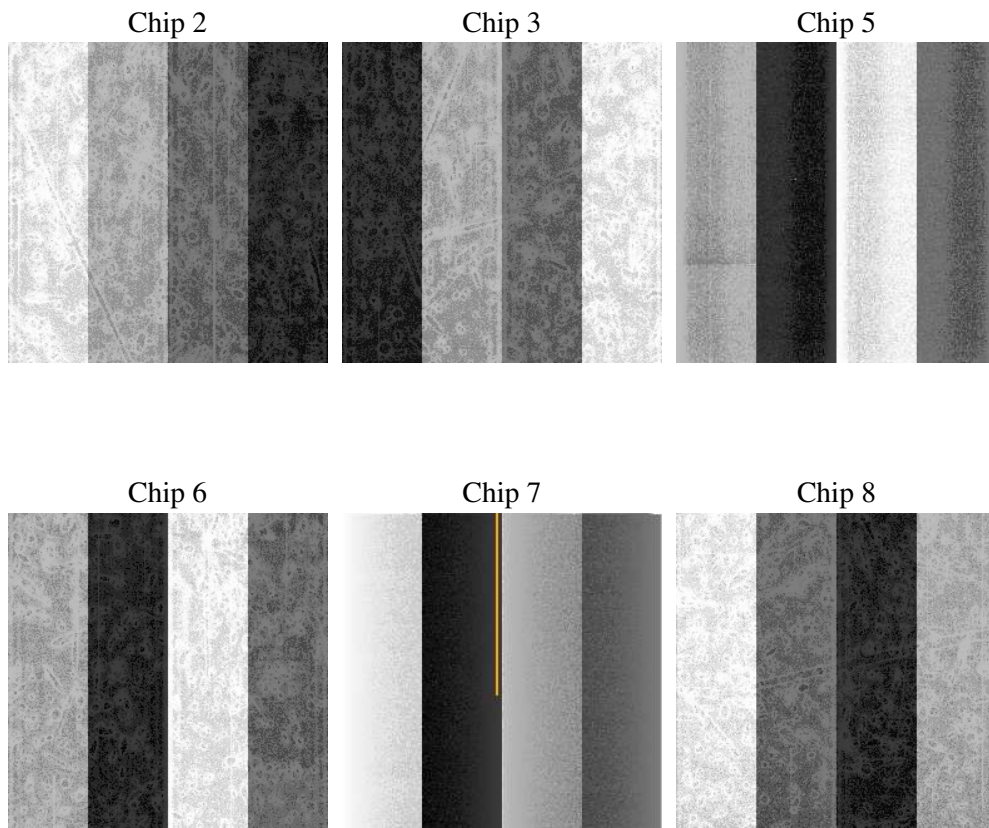
2 OBI

2.1 OBI

2.1.1 Images



2.1.2 Bias



2.1.3 Parameters

obi_num	0
ascdsver	7.6.9
caldbver	3.2.3
date	2006-09-19T18:32:15
revision	2

sched_exp_time	9300.000000
ontime	9761.8956997991
ontime2	9761.8956997991
ontime3	9761.8956997991
ontime5	9761.8956997991
ontime6	9758.6547095776
ontime7	9761.8956997991
ontime8	9761.8956798613
l1events	437215

2.1.4 Events

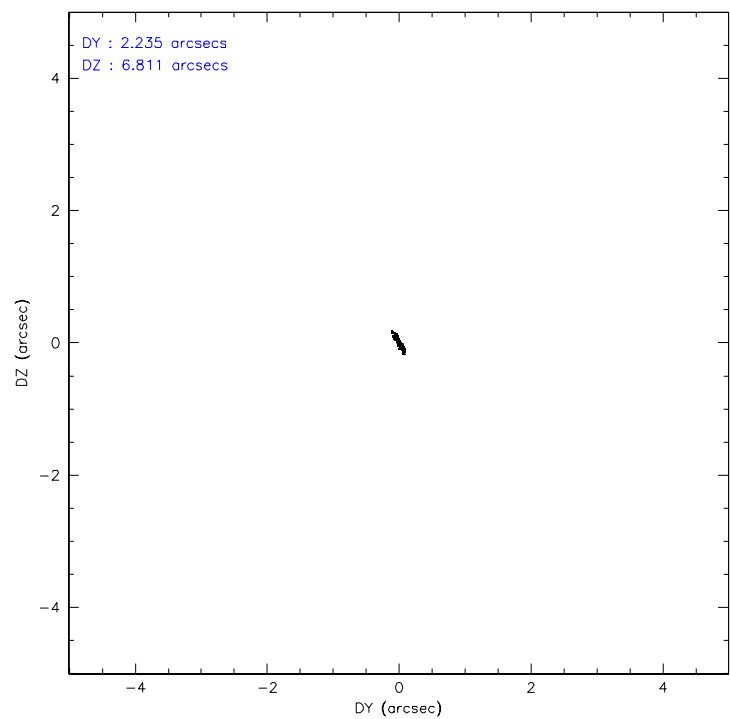
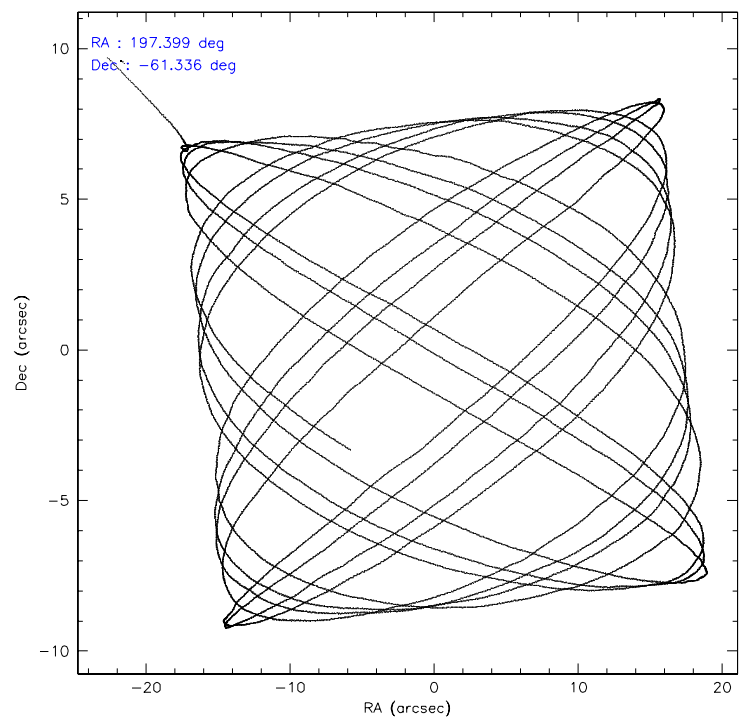
	ccd 2	ccd 3	ccd 5	ccd 6	ccd 7	ccd 8
level 1 events	62029	58497	94305	62645	82120	77619
rejected events	55181	51575	52391	55519	51465	62306
rejected %	88%	88%	55%	88%	62%	80%

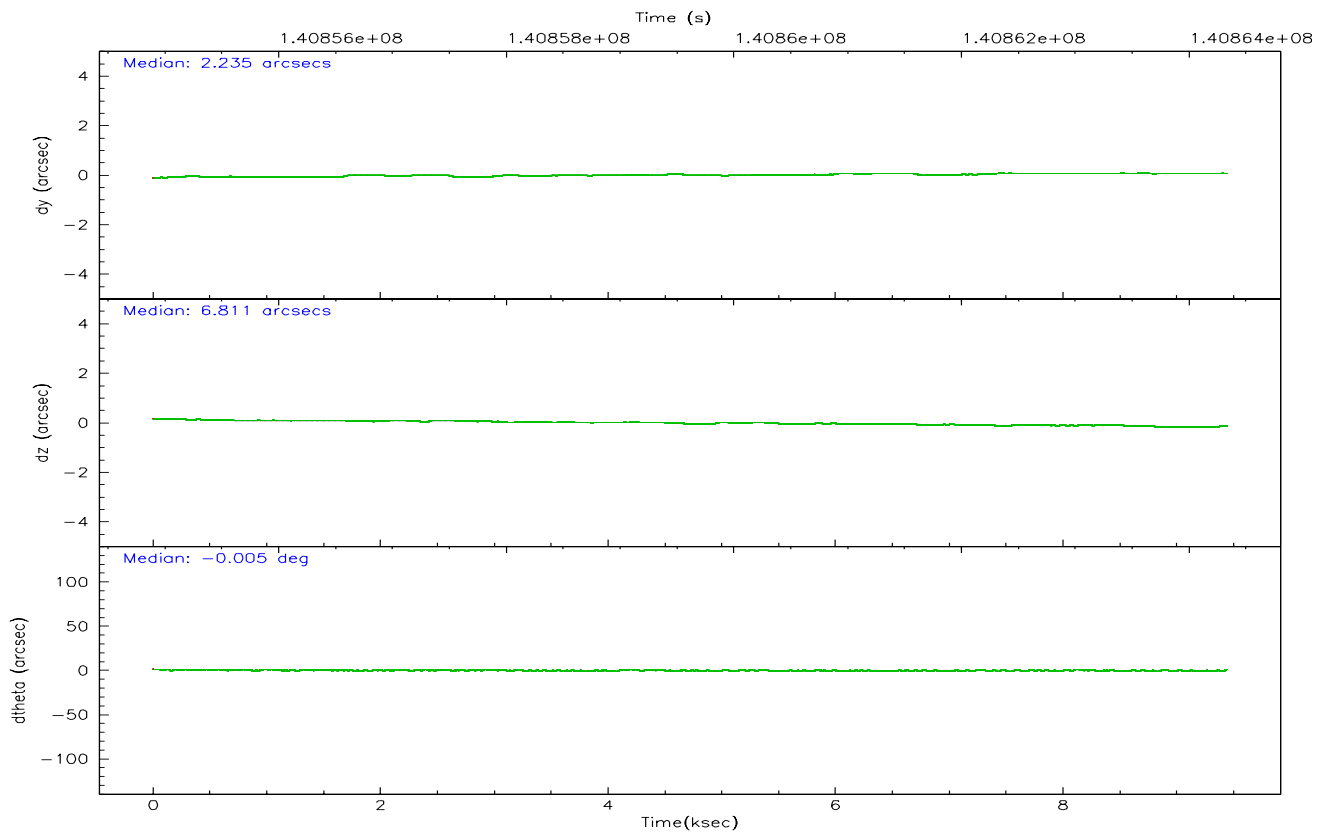
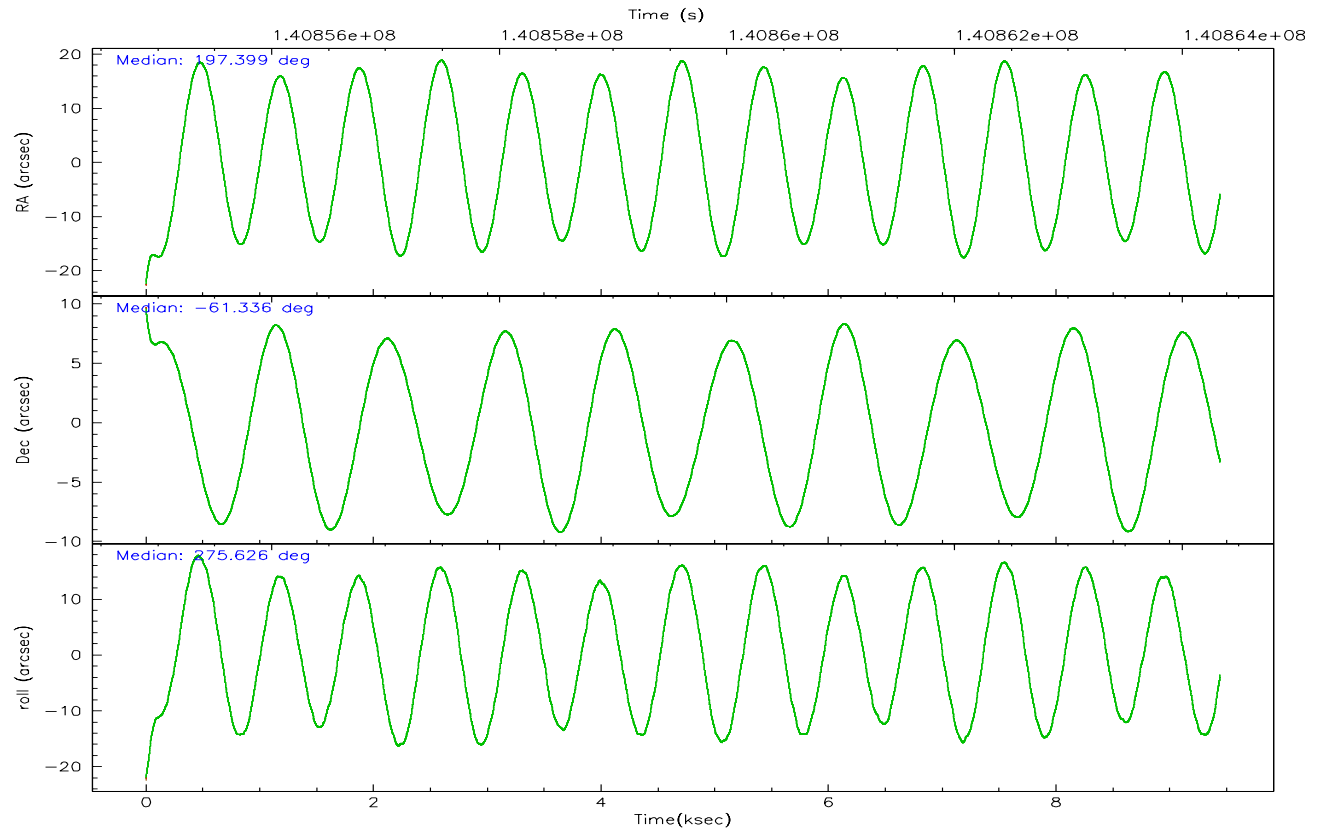
	ccd 2	ccd 3	ccd 5	ccd 6	ccd 7	ccd 8
grade 0 events	3035	3127	6144	3050	2048	5079
	4%	5%	6%	4%	2%	6%
grade 1 events	34	24	79	41	58	44
	0%	0%	0%	0%	0%	0%
grade 2 events	1538	1384	12993	1467	7932	3453
	2%	2%	13%	2%	9%	4%
grade 3 events	683	668	869	718	1686	1661
	1%	1%	0%	1%	2%	2%
grade 4 events	639	681	823	694	1584	1550
	1%	1%	0%	1%	1%	1%
grade 5 events	2152	2547	4364	2659	5375	3327
	3%	4%	4%	4%	6%	4%
grade 6 events	1211	1291	22526	1468	18488	4151
	1%	2%	23%	2%	22%	5%
grade 7 events	52737	48775	46507	52548	44949	58354
	85%	83%	49%	83%	54%	75%

2.2 Compared Parameters

Parameter	Planned	Actual	Parameter	Planned	Actual
Instrument	ACIS	ACIS	Obspar format version number	6	6
Detector	ACIS-235678	ACIS-235678	Obspar file type	PREDICTED	ACTUAL
Grating	NONE	NONE	Obspar update status	NONE	UPDATED
Data mode	FAINT	FAINT	Number of optional ACIS chips dropped	0	0
Observation mode	POINTING	POINTING	On-chip summing requested	N	N
Pointing RA	197.366424	197.3999808822127	Subarray requested	NONE	NONE
Pointing Dec	-61.314480	-61.33634870332439	Alternating exposures requested	N	N
Pointing Roll	275.450139	275.6362025064453	Primary exposure time	0.000000	3.2
SIM focus pos (mm)	-0.684267	-0.6828225247311905			
SIM defocus (mm)	0	0.001444936568705701			
SIM translation stage pos (mm)	-190.132523	-190.1400660498719			
SIM translation stage offset (mm)	0	0.00754346686406393			
Observation start time	140855040.184000	140853831.27988			
Observation start date	2002-06-19T06:22:56	2002-06-19T06:03:51			
Observation end time	140864340.184000	140864798.26783			
Observation end date	2002-06-19T08:57:56	2002-06-19T09:06:38			
Read mode	TIMED	TIMED			

2.3 Aspect



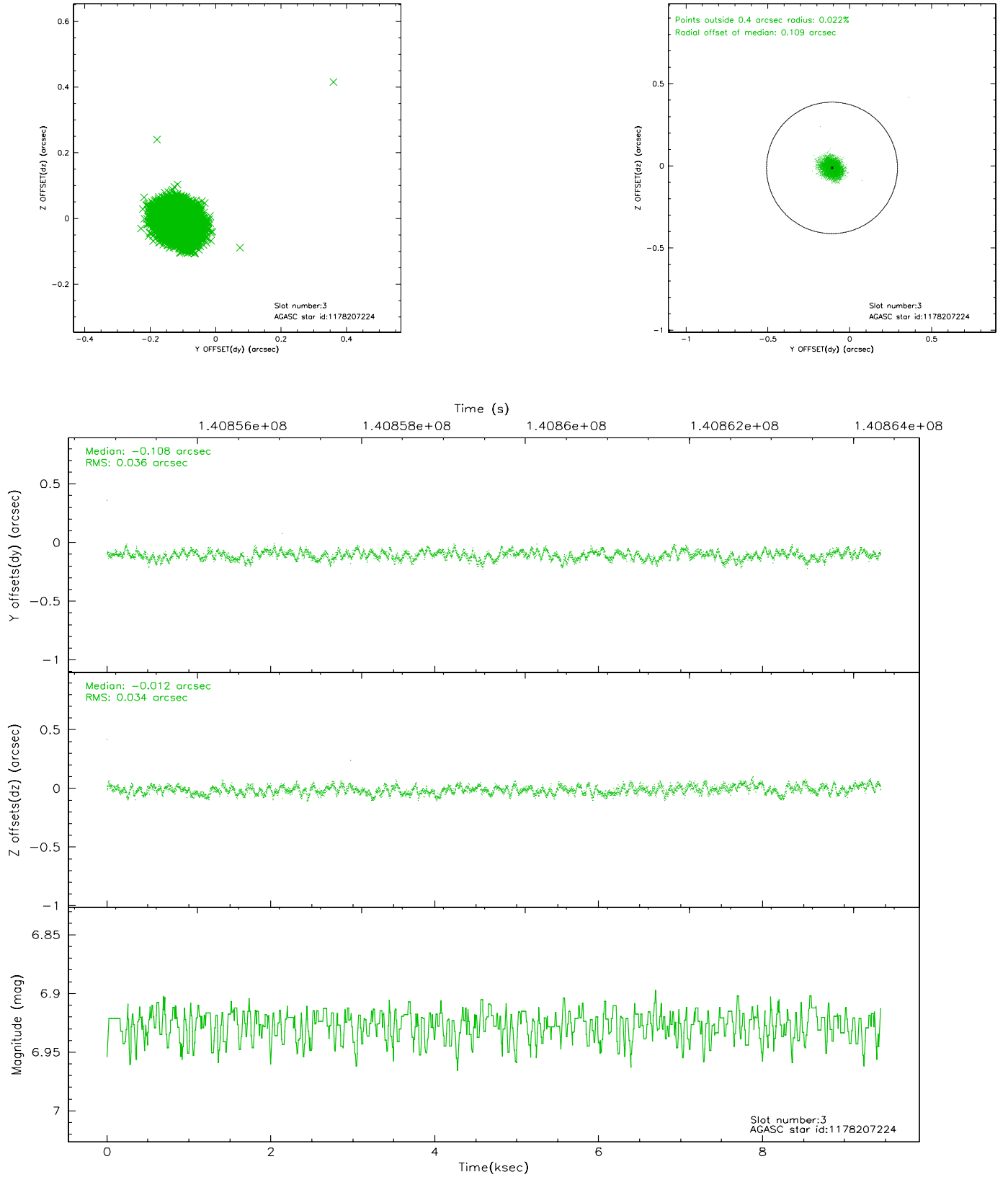


Slot Statistics

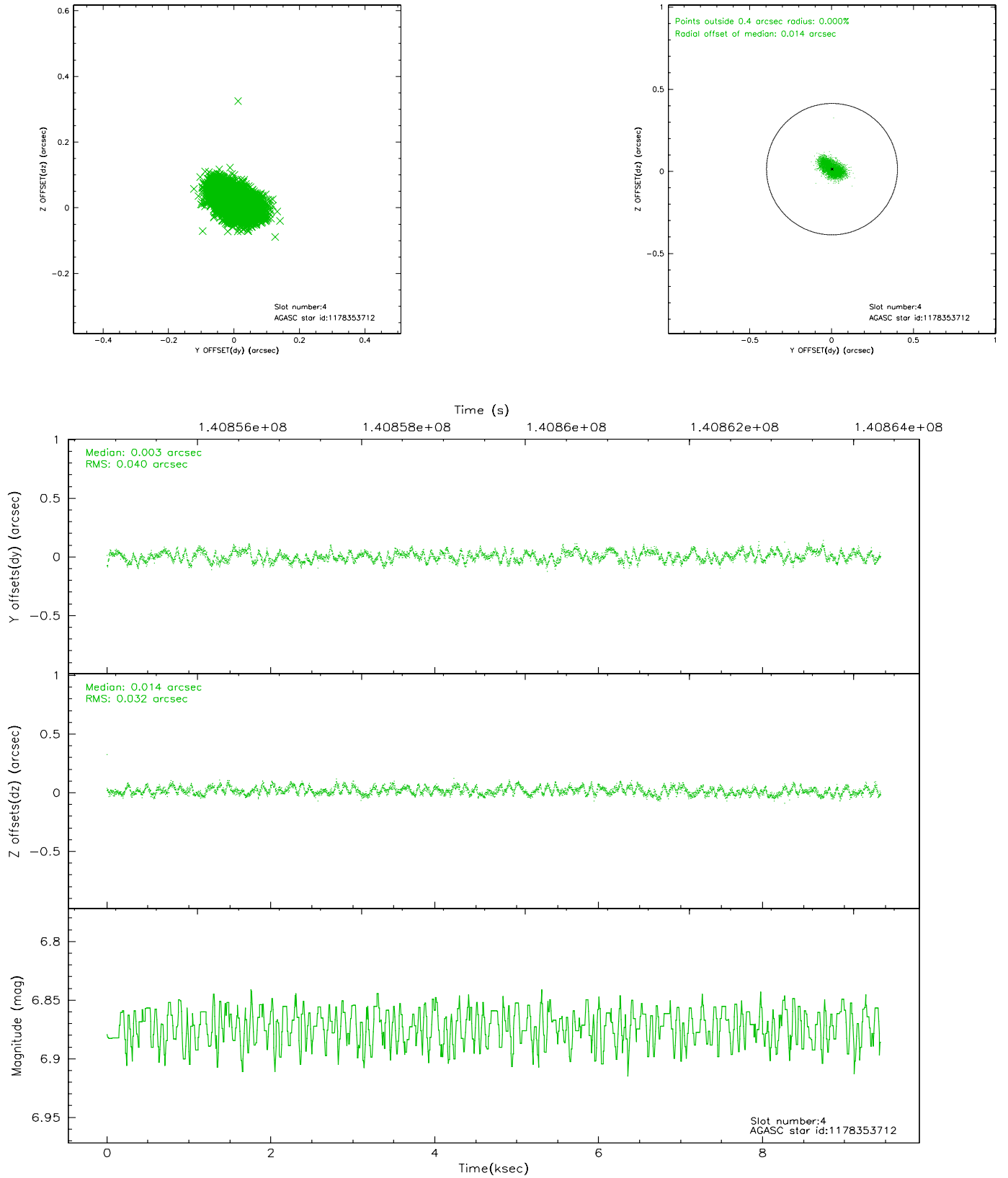
slot	status	id	mag	n_pts	med_dy	med_dz	dr1	dr2	ra	dec	mean_y	mean_z
0	FID	ACIS-S-2	7.11	2304	-0.023	0.021	0.010	0.021	0.000000	0.000000	-754.86	-1727.95
1	FID	ACIS-S-4	7.20	2304	-0.056	0.006	0.009	0.031	0.000000	0.000000	2158.10	179.96
2	FID	ACIS-S-5	7.24	2304	0.049	-0.018	0.009	0.022	0.000000	0.000000	-1806.92	174.21
3	GUIDE	1178207224	6.93	4608	-0.108	-0.012	0.053	0.080	196.243518	-61.438577	278.98	-1967.16
4	GUIDE	1178353712	6.87	4608	0.003	0.014	0.055	0.087	197.981474	-61.117326	-599.05	1131.87
5	GUIDE	1178362328	7.53	4608	0.081	0.055	0.053	0.088	198.207937	-61.545115	973.68	1358.26
6	GUIDE	1178207632	8.04	4608	0.044	0.020	0.062	0.103	196.153548	-61.710280	1242.75	-2195.76
7	GUIDE	1178346272	8.60	4604	-0.025	-0.079	0.059	0.098	197.595234	-60.787807	-1847.39	580.18

2.4 Star Slots

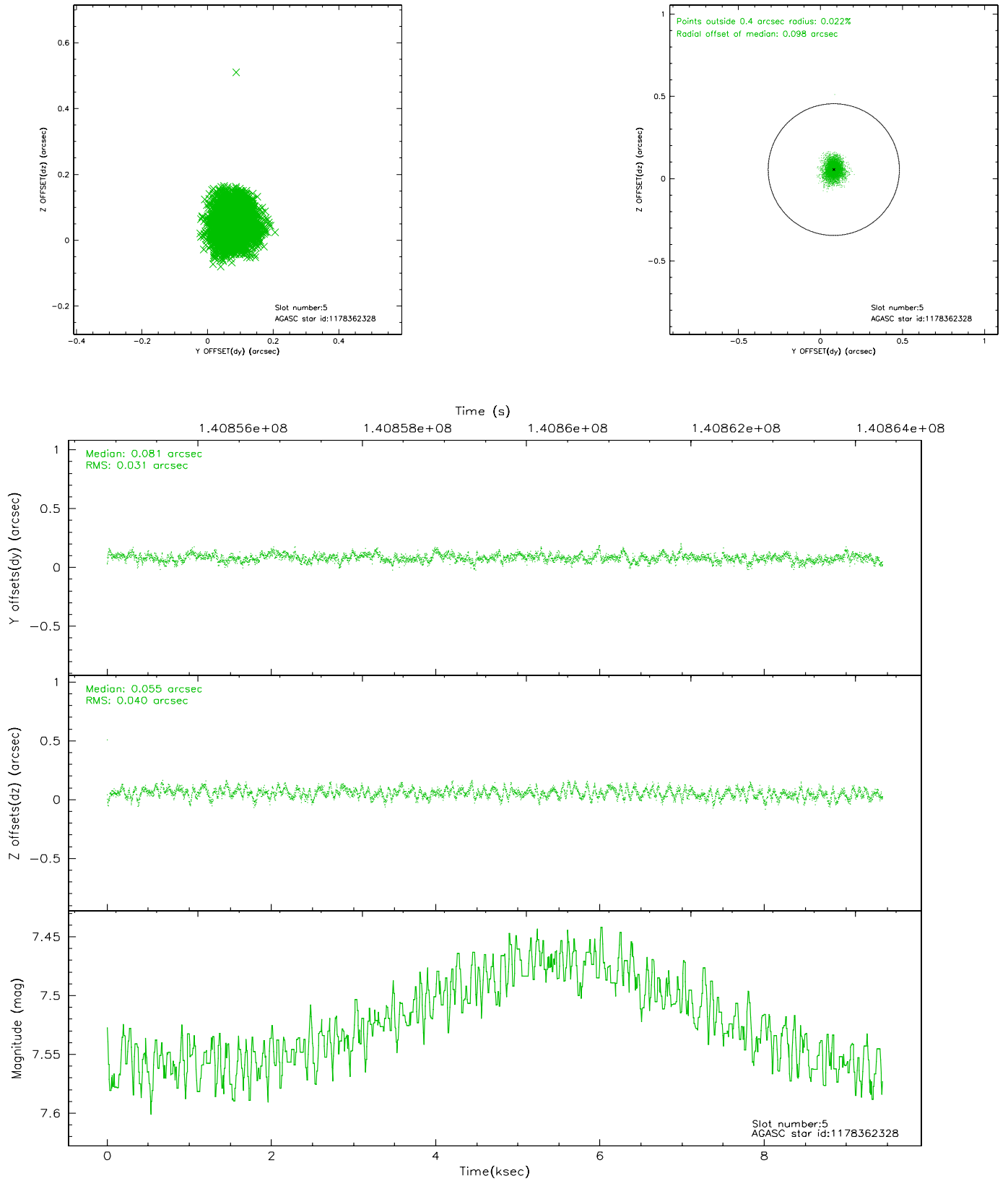
2.4.1 Slot 3



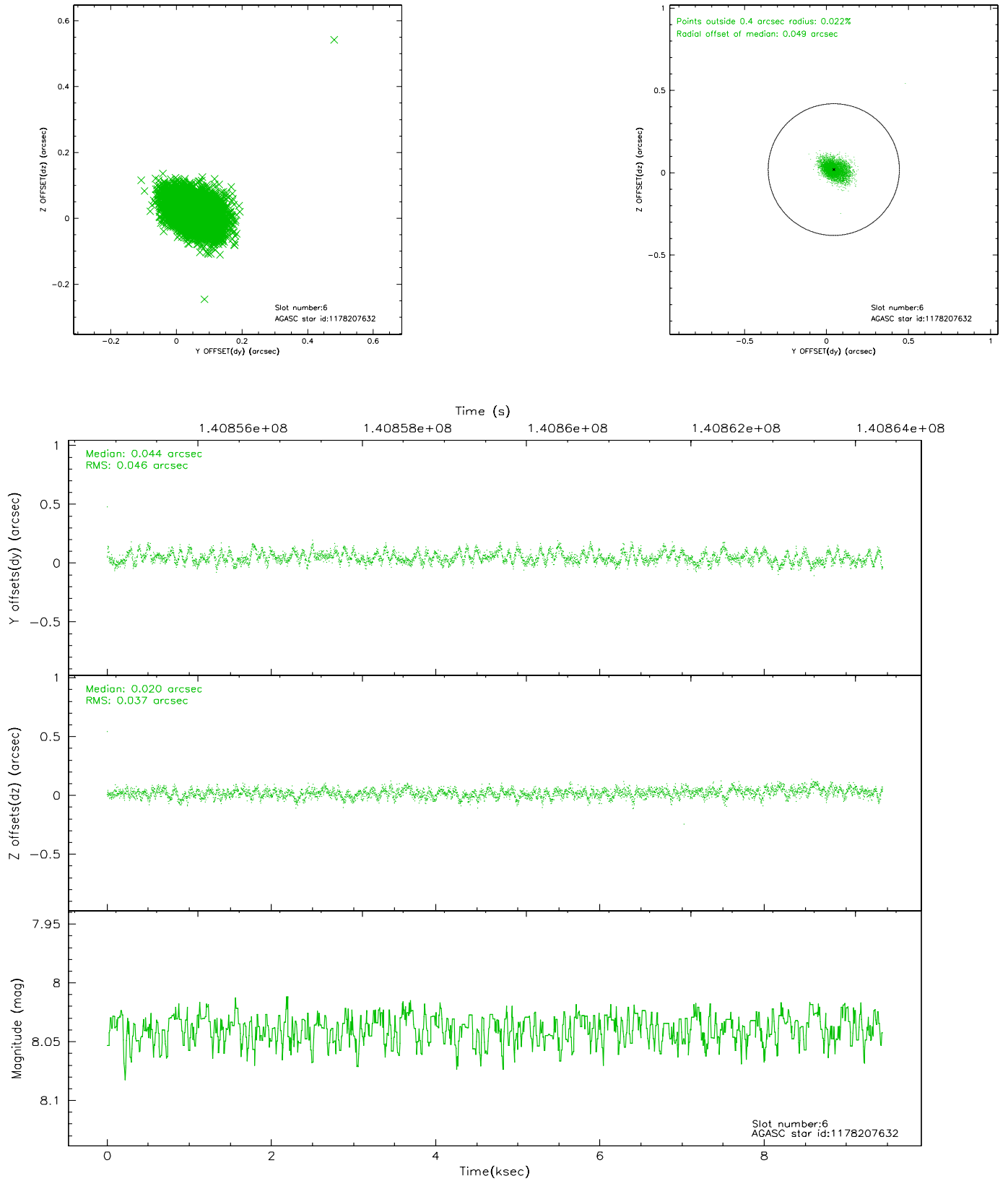
2.4.2 Slot 4



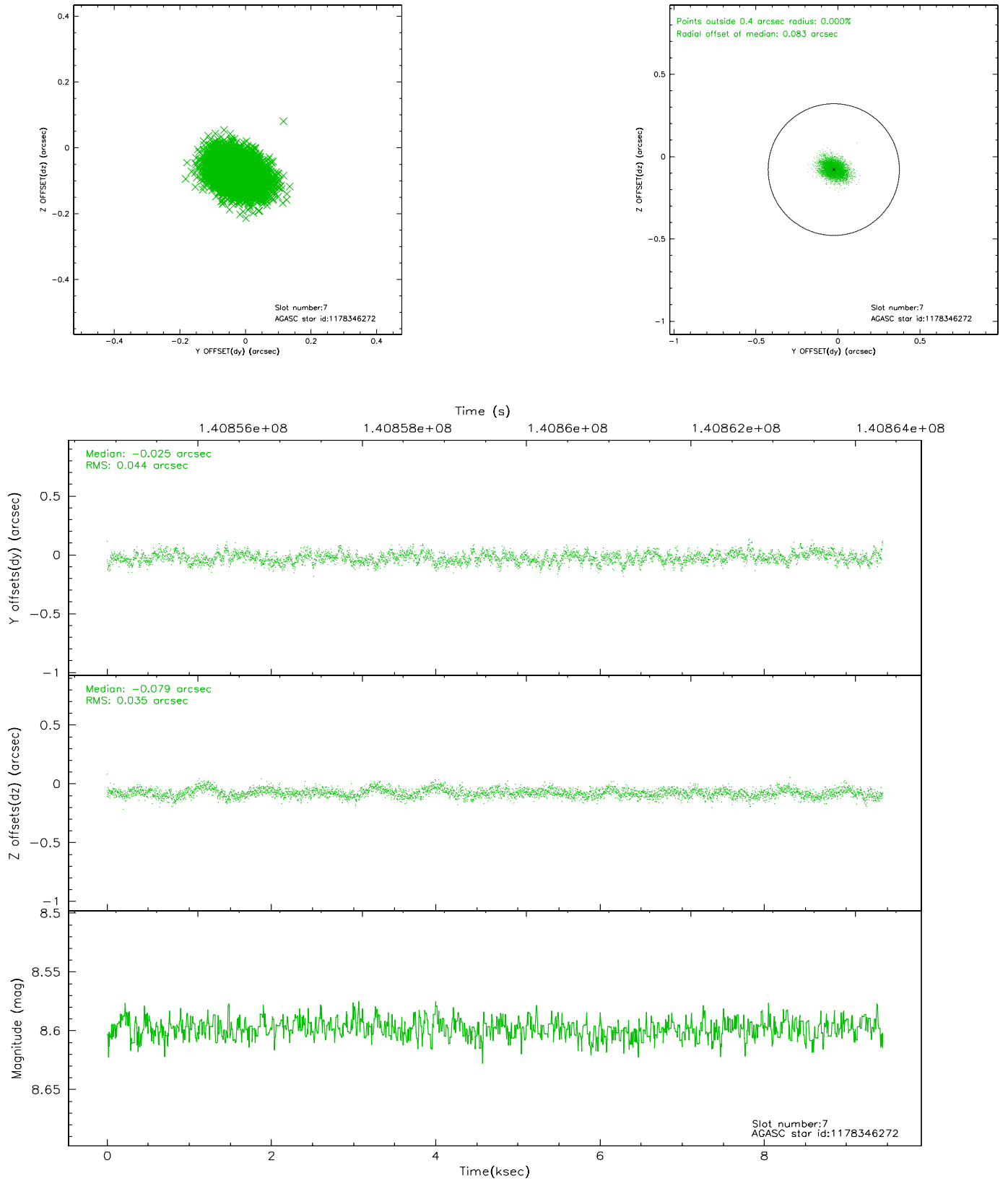
2.4.3 Slot 5



2.4.4 Slot 6

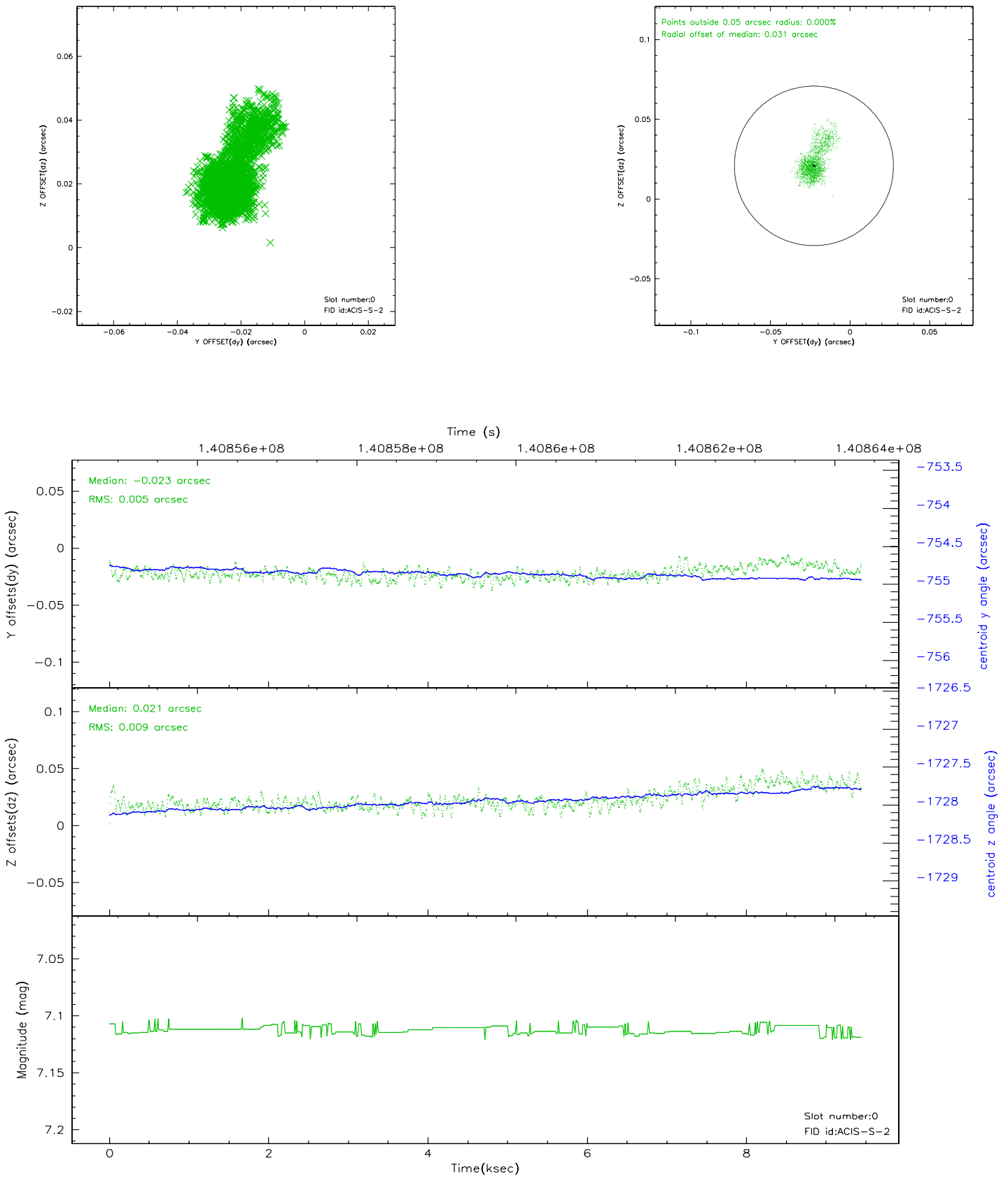


2.4.5 Slot 7

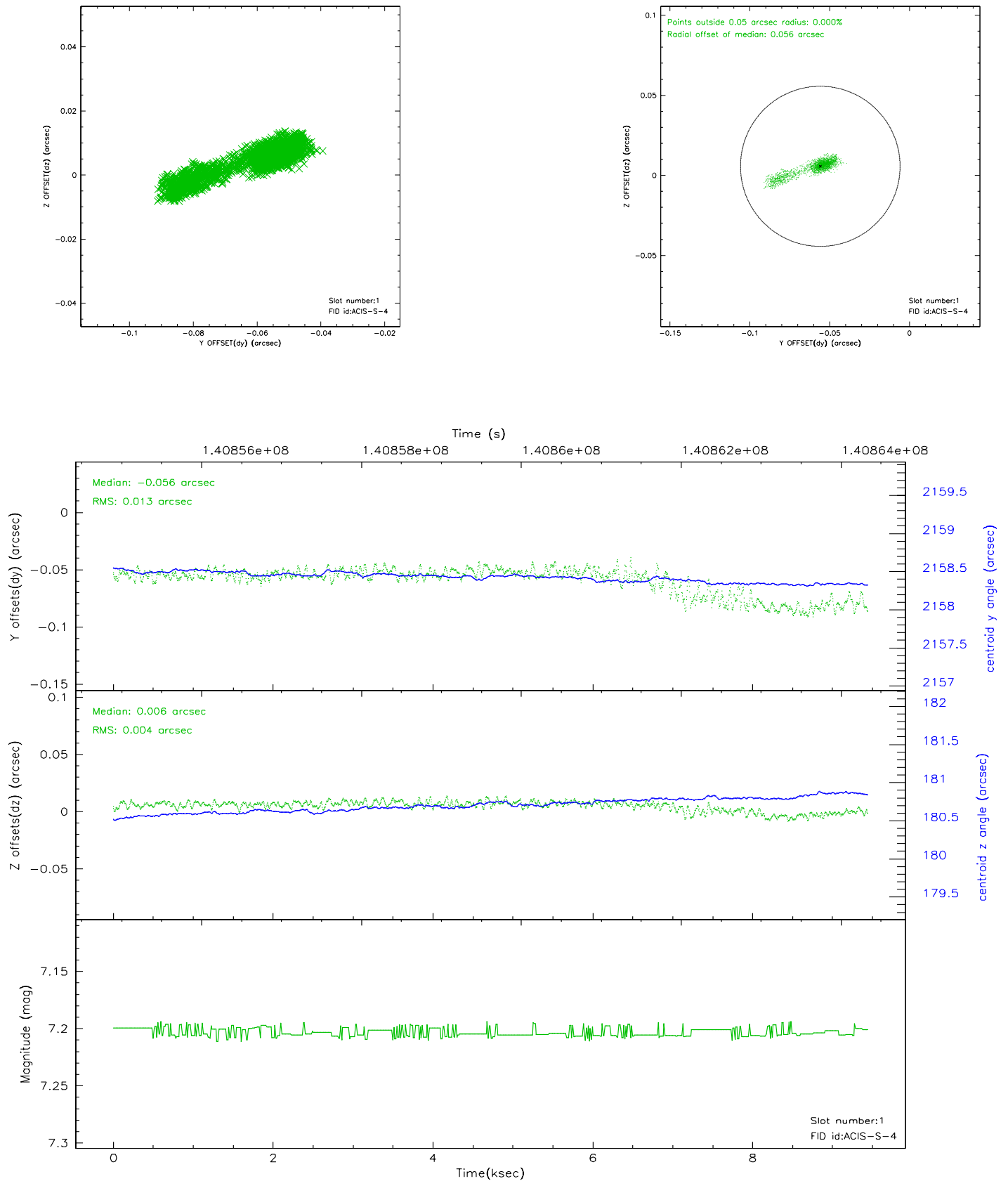


2.5 FID Slots

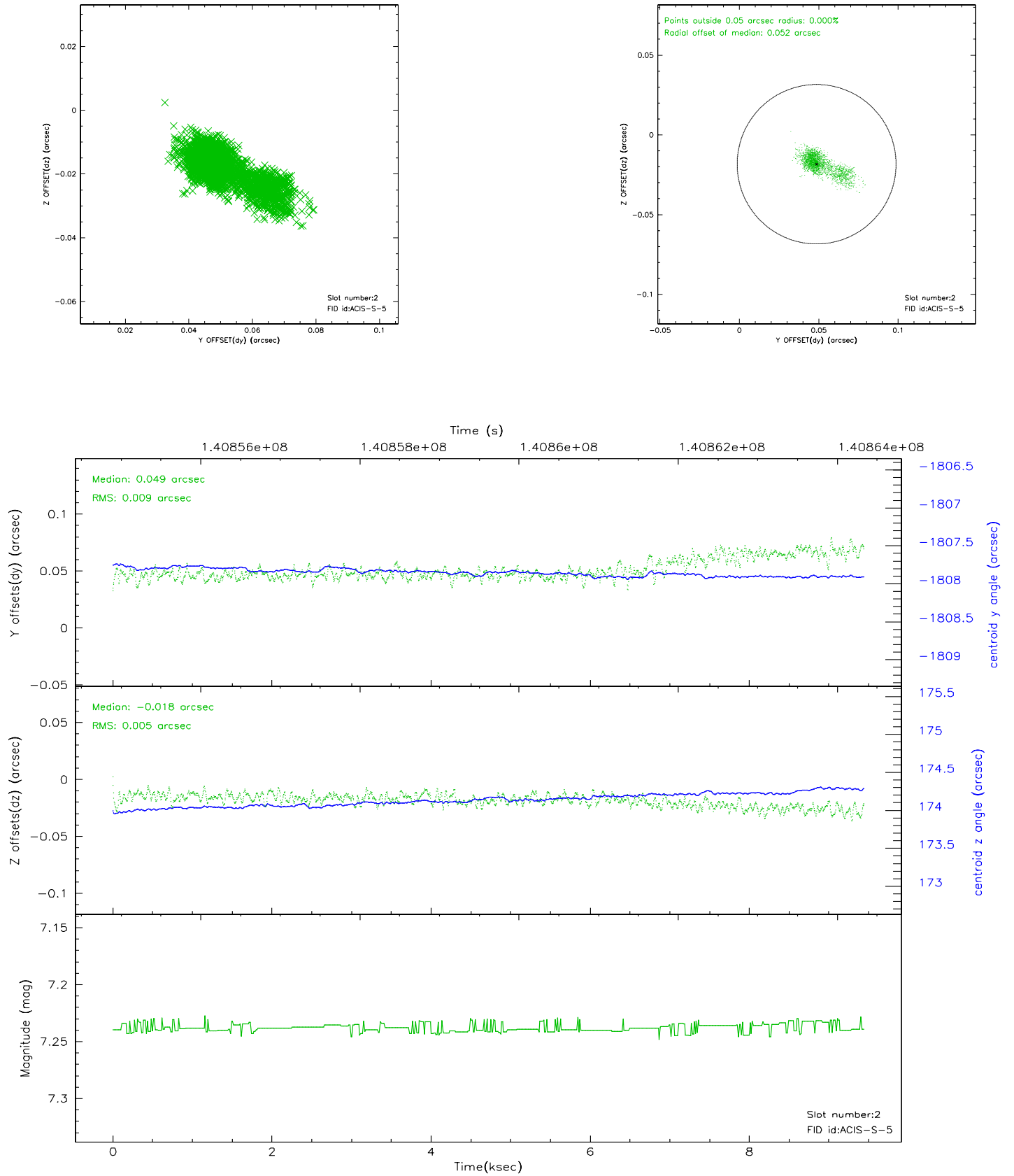
2.5.1 Slot 0



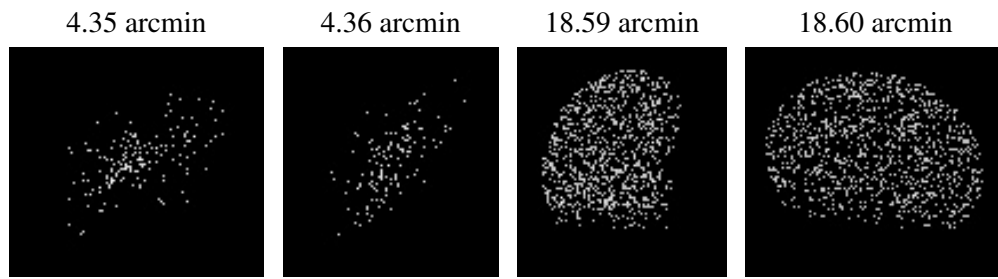
2.5.2 Slot 1



2.5.3 Slot 2



3 Point Sources



A Summary

A.1 Status

V&V Scientist	Beth Sundheim
V&V Date (YYYY-MM-DD)	2006.09.19
V&V Edition	1
V&V Disposition and Status	OK
V&V Charge Time	9.44

A.2 Comments