

# V&V Reference Report

## L2 ASCDS Version : 8.4.5

Observation 251 - L2 Version 5  
Chandra X-Ray Center

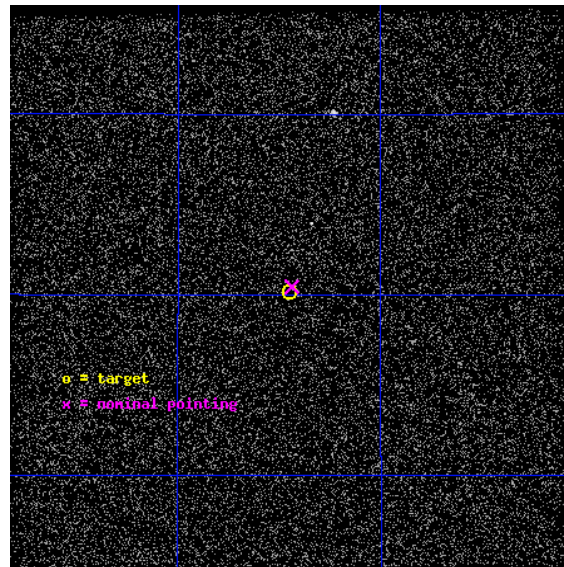
L2 Processing Date : Sep 1 2012

## Contents

<b>1</b>	<b>Front</b>	<b>2</b>
<b>2</b>	<b>OBI</b>	<b>3</b>
2.1	OBI . . . . .	3
2.1.1	Images . . . . .	3
2.1.2	Parameters . . . . .	4
2.1.3	Events . . . . .	4
2.2	Compared Parameters . . . . .	5
2.3	Aspect . . . . .	6
2.4	Star Slots . . . . .	9
2.4.1	Slot 3 . . . . .	9
2.4.2	Slot 4 . . . . .	10
2.4.3	Slot 5 . . . . .	11
2.4.4	Slot 6 . . . . .	12
2.4.5	Slot 7 . . . . .	13
2.5	FID Slots . . . . .	14
2.5.1	Slot 0 . . . . .	14
2.5.2	Slot 1 . . . . .	15
2.5.3	Slot 2 . . . . .	16
<b>A</b>	<b>Summary</b>	<b>17</b>
A.1	Status . . . . .	17
A.2	Comments . . . . .	17

# 1 Front

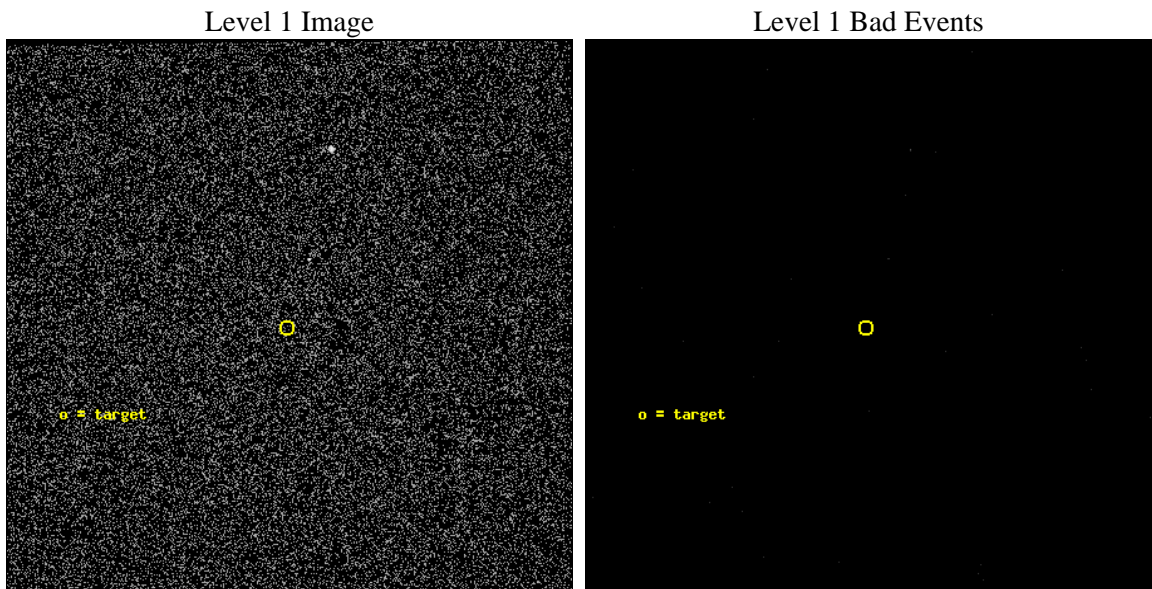
seq_num	600011	Sequence number
obs_id	251	Observation id
title	MONITORING M31	Proposal title
observer	Dr. Stephen Murray	Principal investigator
object	M31 - South 2	Source name
ra_targ	10.1125	Observer's specified target RA [deg]
dec_targ	40.67	Observer's specified target Dec [deg]
ra_nom	10.109475345097	Nominal RA [deg]
dec_nom	40.674178267219	Nominal Dec [deg]
roll_nom	134.30245004901	Nominal Roll [deg]
revision	5	Processing version of data
ontime	981.18128676713	[s]
livetime	975.84924903329	Ontime multiplied by DTCOR
l2events	33562	Number of level 2 events



## 2 OBI

### 2.1 OBI

#### 2.1.1 Images



### 2.1.2 Parameters

obi_num	0	Obi number	sched_exp_time	1000.000000	[s] Scheduled observation exposure time
ascdsver	8.4.5	Processing system revision	ontime	981.18128676713	[s]
caldbver	4.5.1.1	&#160	l1events	50197	Number of level 1 events
date	2012-09-01T01:53:05	Date and time of file creation			
revision	5	Processing version of data			

### 2.1.3 Events

#### Level 1 Events

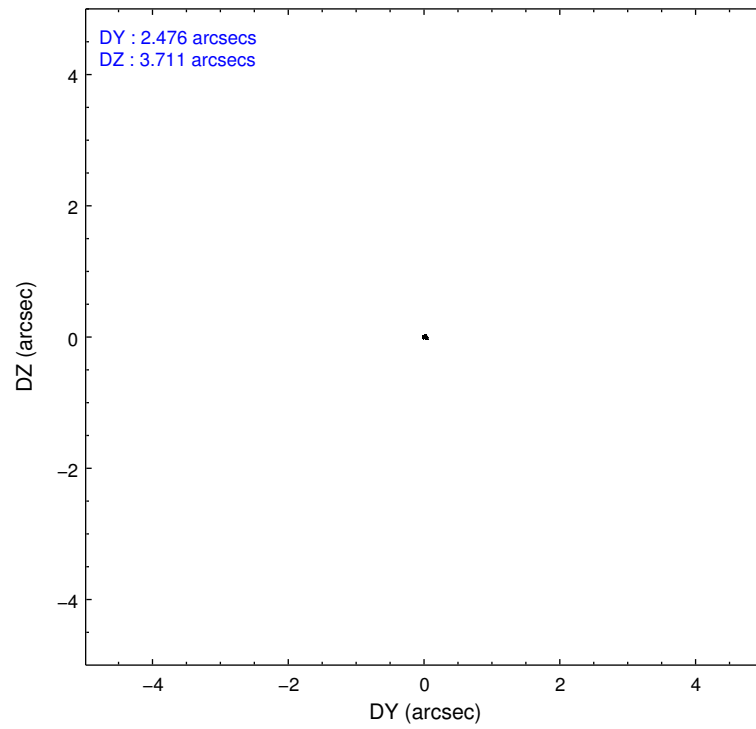
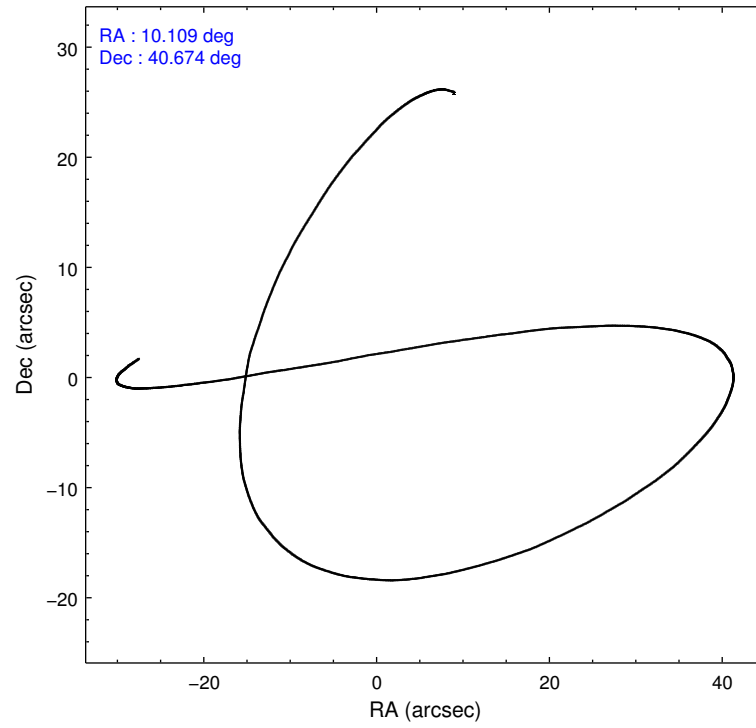
	<b>segment 0</b>
level 1 events	50197
rejected events	2931
rejected %	5%

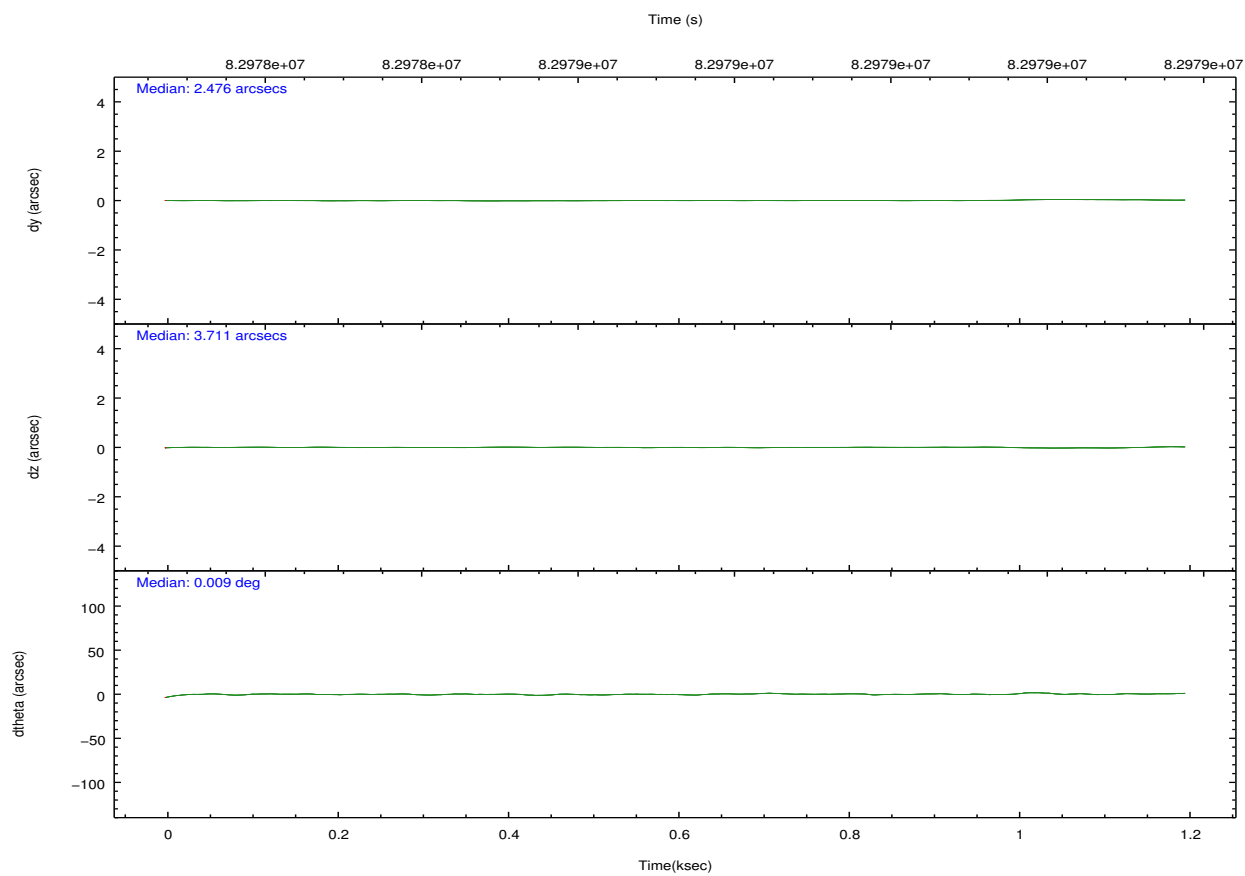
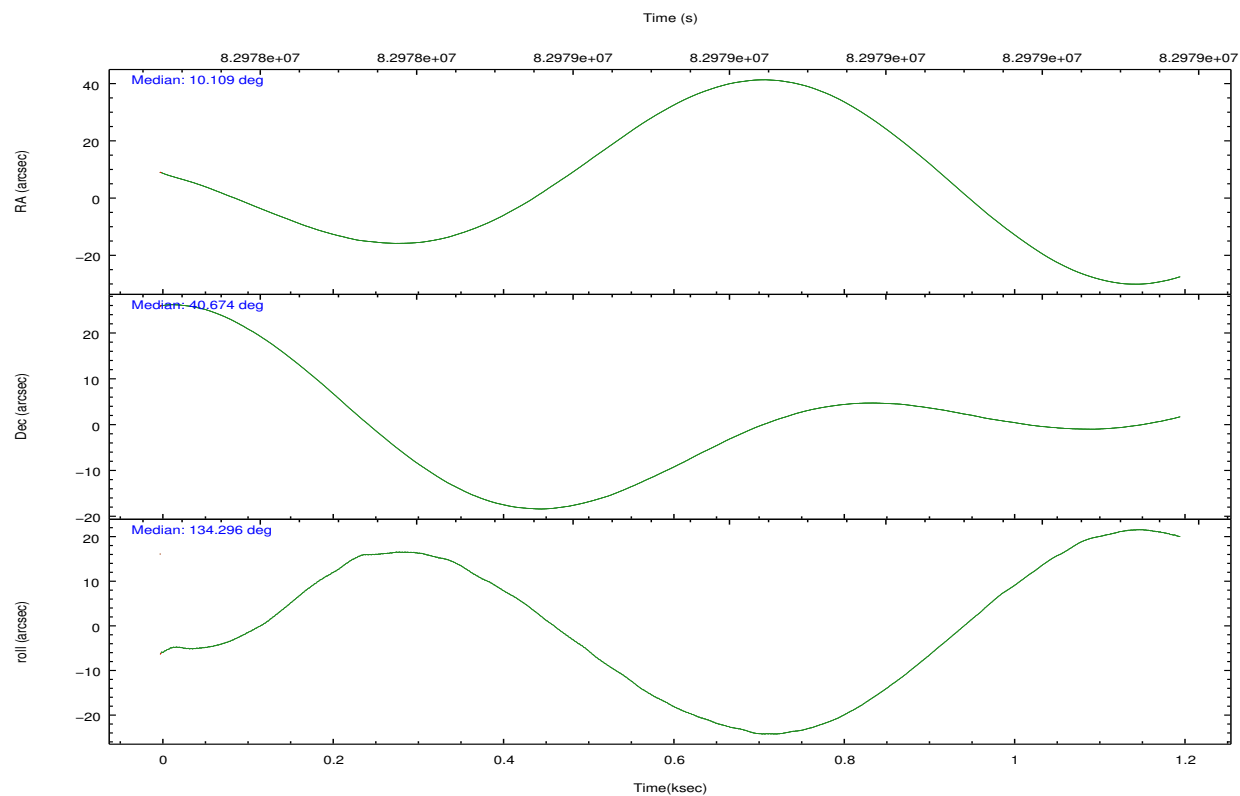
## 2.2 Compared Parameters

Parameter	Planned	Actual
Instrument	HRC	HRC
Detector	HRC-I	HRC-I
Grating	NONE	NONE
Data mode	OBSERVING	OBSERVING
Observation mode	POINTING	POINTING
[deg] Pointing RA	10.145094	10.10947534509664
[deg] Pointing Dec	40.667143	40.67417826721881
[deg] Pointing Roll	134.374702	134.3024500490116
[mm] SIM focus pos	-1.040293	-1.038866356238299
[mm] SIM defocus	0	0.001426264420575141
[mm] SIM translation stage pos	126.985494	126.9854943052878
[mm] SIM translation stage offset	0	-5.413686238853188e-06
[s] Observation start time (MET)	82978323.184000	82977862.569996
Observation start date	2000-08-18T09:30:59	2000-08-18T09:24:22
[s] Observation end time (MET)	82979323.184000	82979456.95755599
Observation end date	2000-08-18T09:47:39	2000-08-18T09:50:56

Parameter	Planned	Actual
Obspar format version number	7	7
Obspar file type	PREDICTED	ACTUAL
Obspar update status	NONE	UPDATED

## 2.3 Aspect





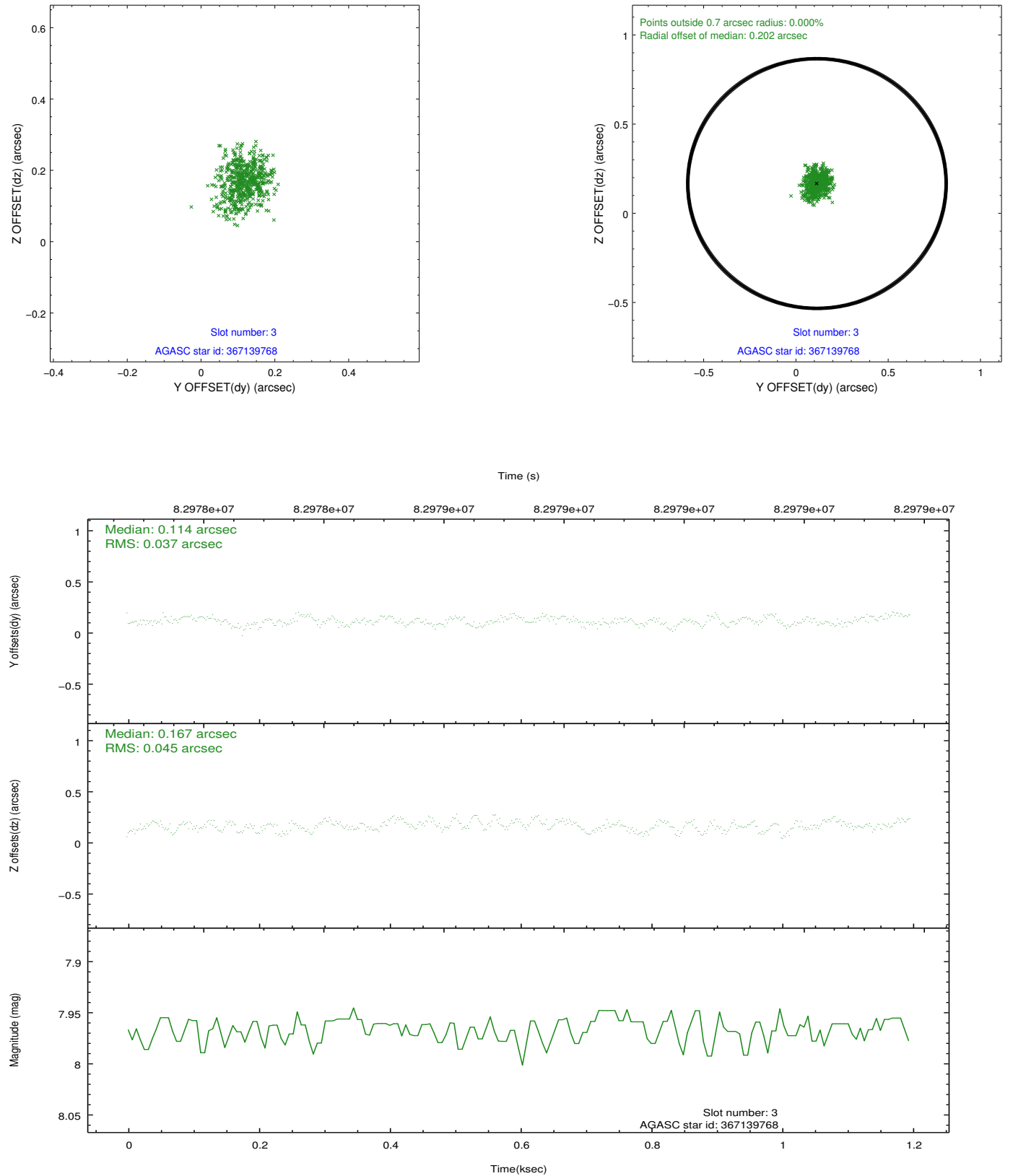
### Slot Statistics

slot	status	id	mag	n_pts	med_dy	med_dz	dr1	dr2	ra	dec	mean_y	mean_z
0	FID	HRC-I-1	6.96	293	0.063	0.045	0.005	0.011	0.000000	0.000000	-757.90	-1291.46
1	FID	HRC-I-3	7.03	293	0.025	-0.067	0.006	0.012	0.000000	0.000000	-1188.98	1008.60
2	FID	HRC-I-4	6.98	293	0.026	-0.067	0.005	0.007	0.000000	0.000000	1280.83	1014.01
3	GUIDE	367139768	7.97	585	0.114	0.167	0.063	0.101	11.069715	40.685175	-1709.32	-1859.74
4	GUIDE	365439720	8.47	585	-0.087	-0.114	0.066	0.108	9.704623	40.431022	235.27	1450.97
5	GUIDE	367144424	8.64	583	0.140	-0.120	0.062	0.099	10.464515	40.309136	-1533.05	274.85
6	GUIDE	367658664	9.60	584	-0.131	0.213	0.111	0.176	10.374070	41.369746	1373.16	-2211.70
7	GUIDE	365442912	9.59	584	-0.047	-0.154	0.093	0.150	9.345394	40.727461	1690.03	1396.05

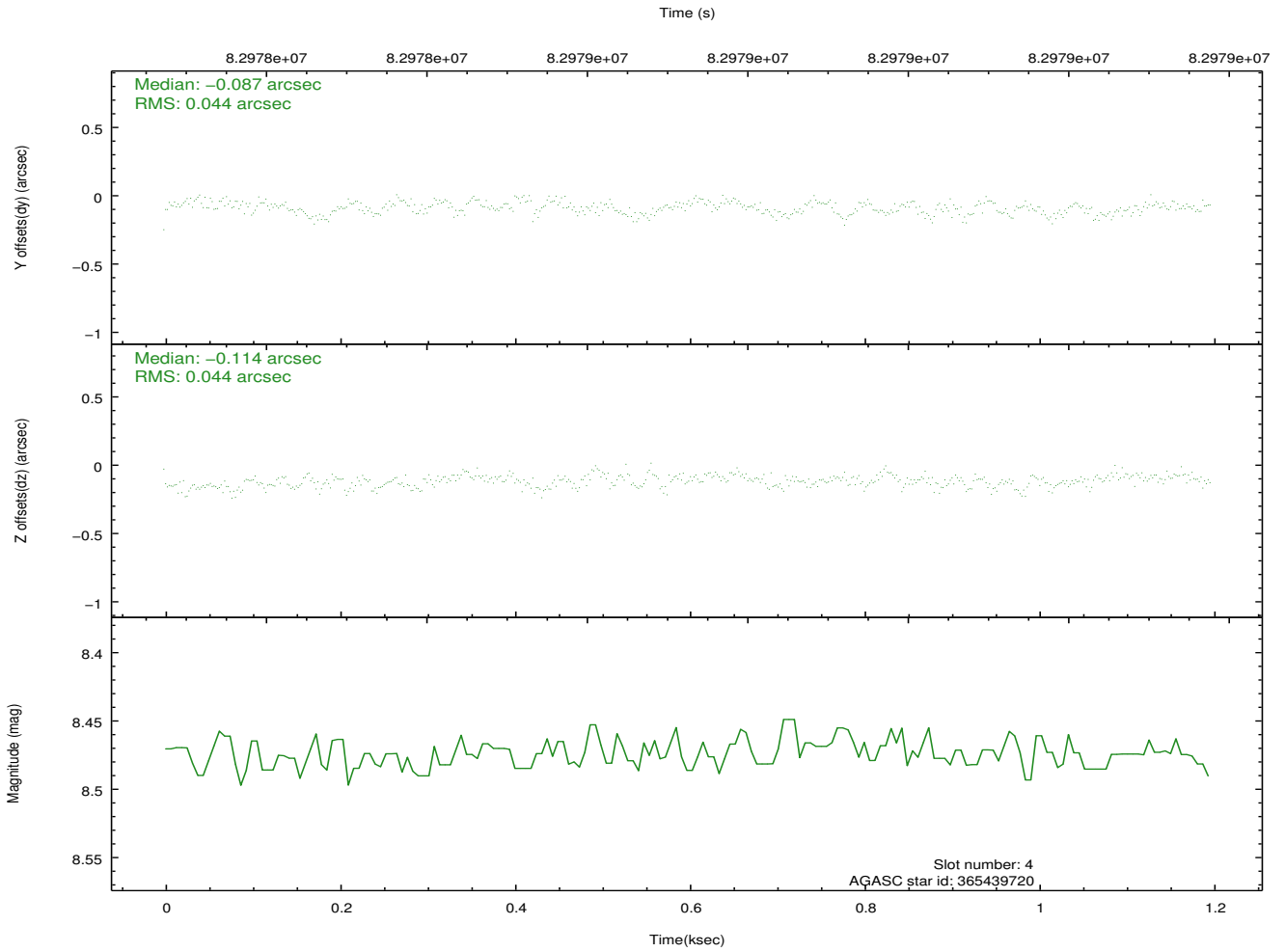
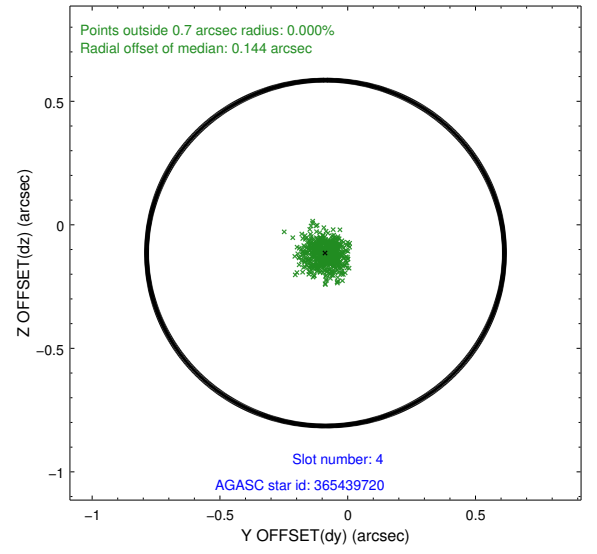
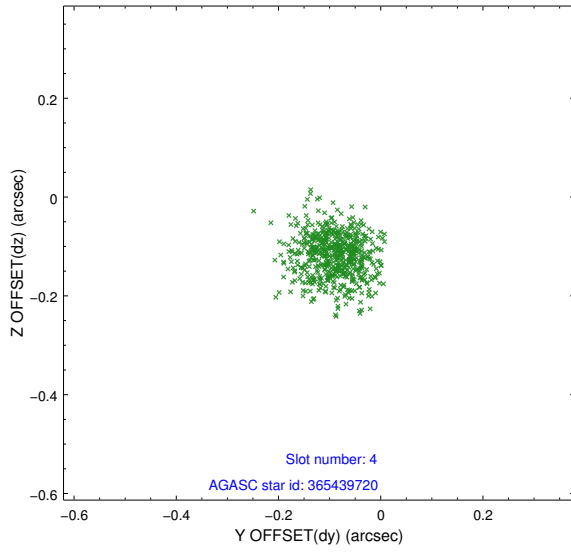


## 2.4 Star Slots

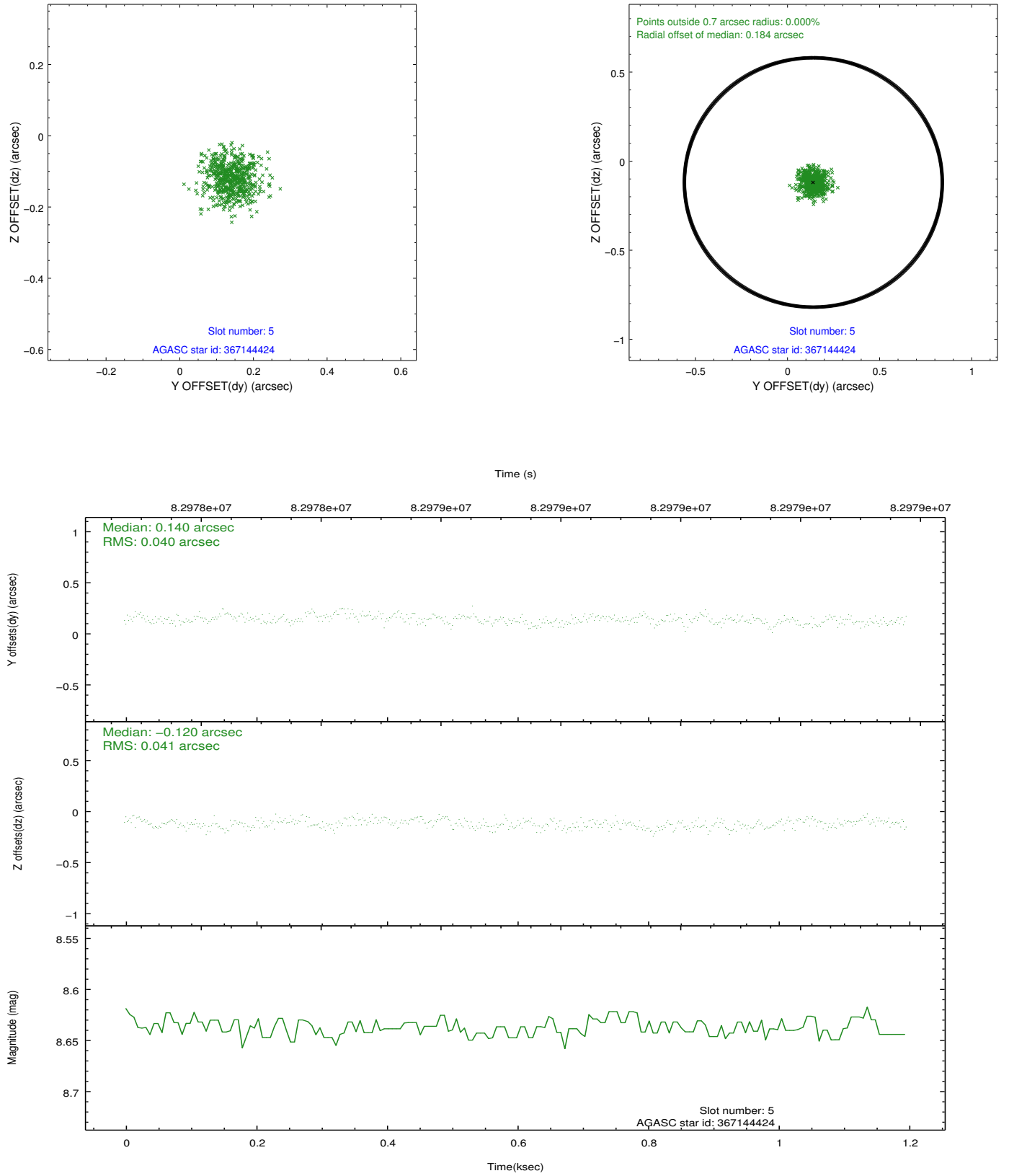
### 2.4.1 Slot 3



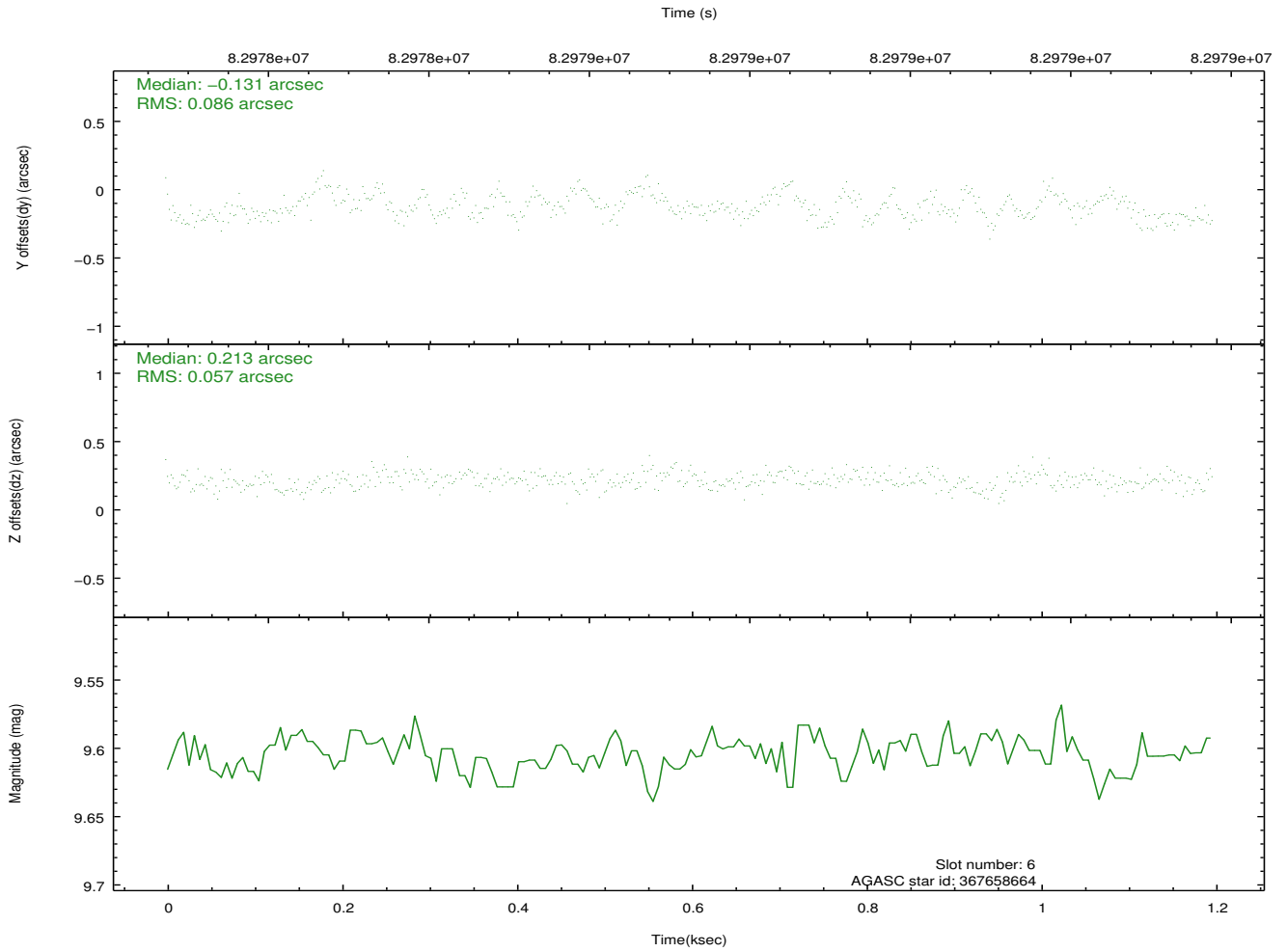
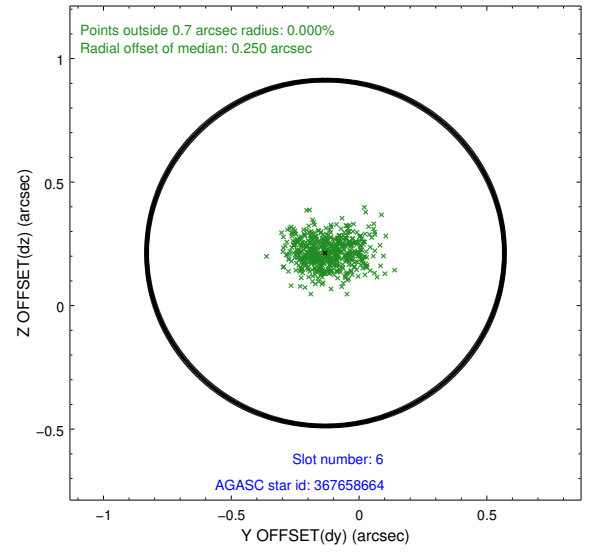
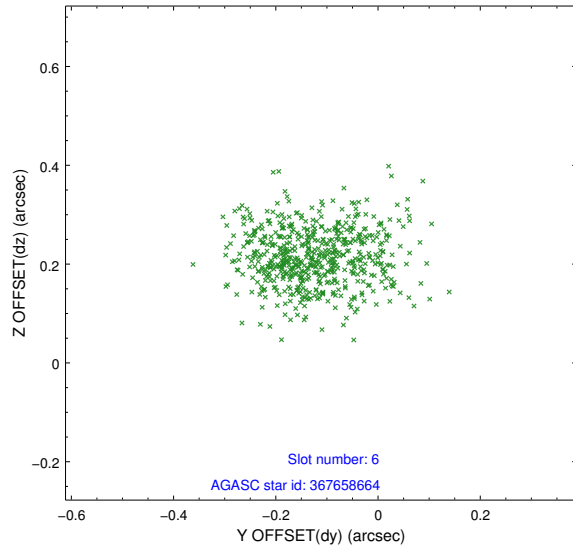
## 2.4.2 Slot 4



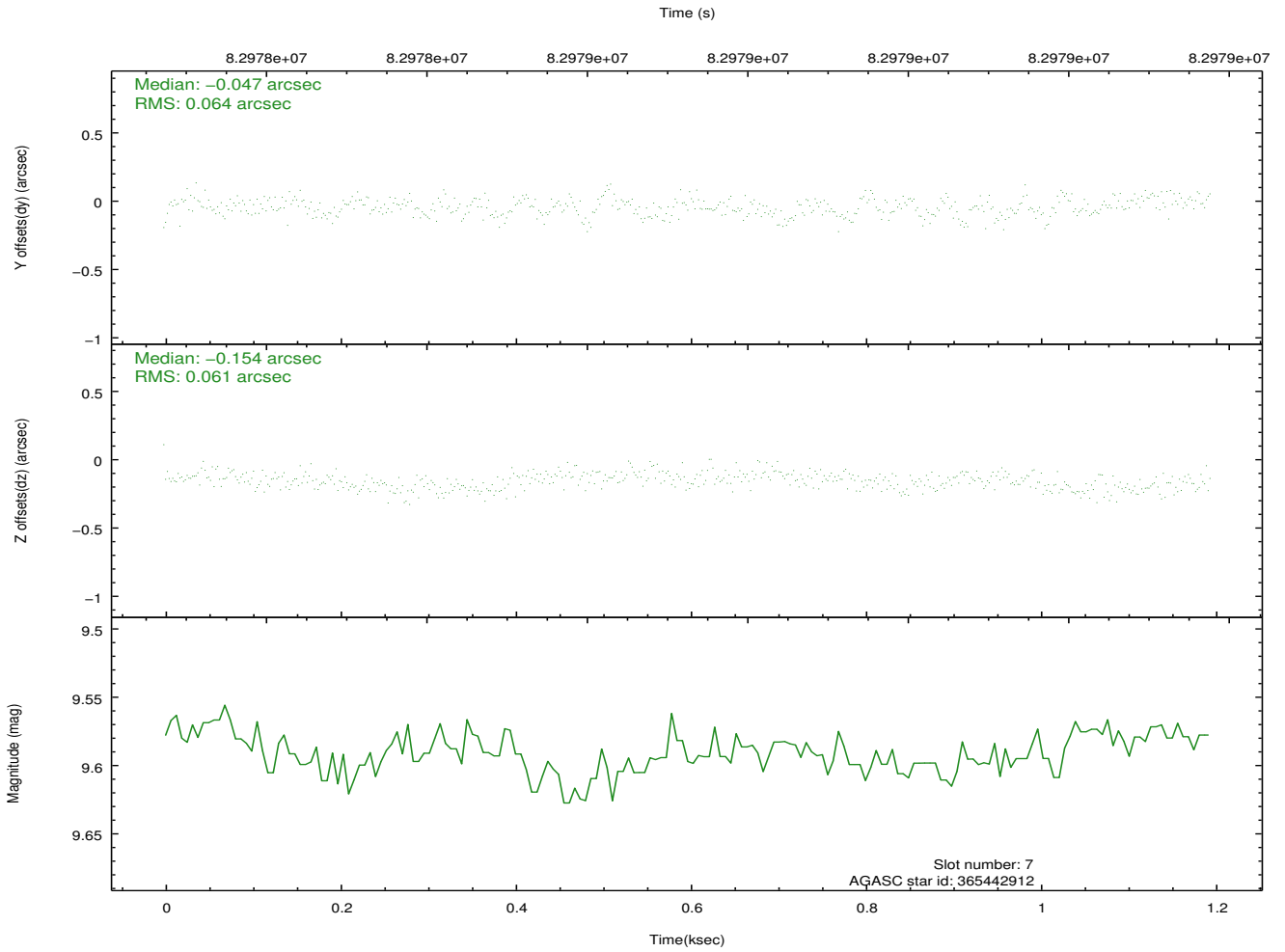
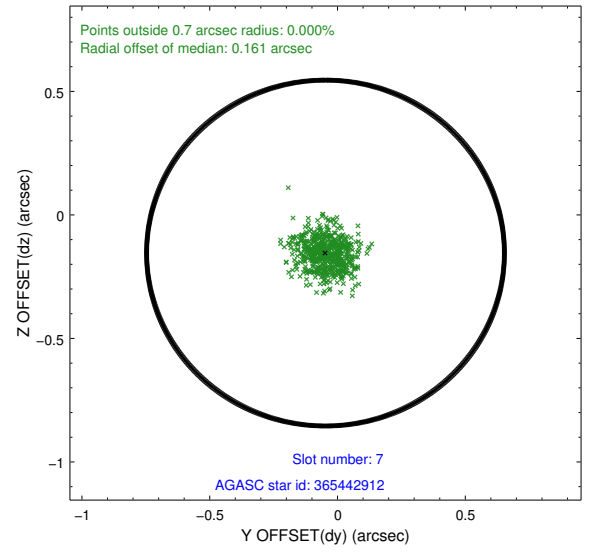
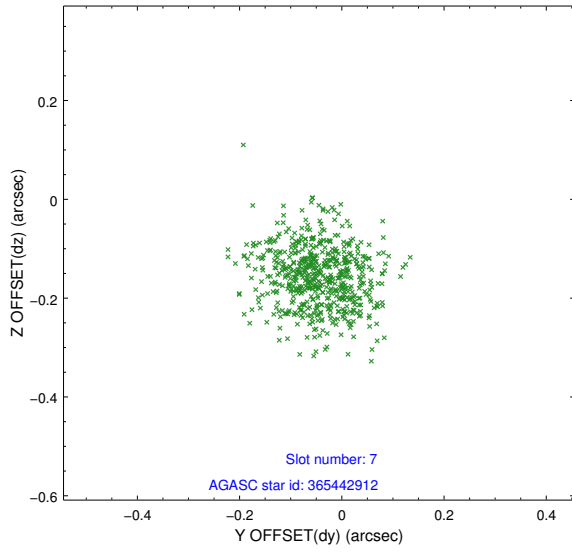
### 2.4.3 Slot 5



## 2.4.4 Slot 6

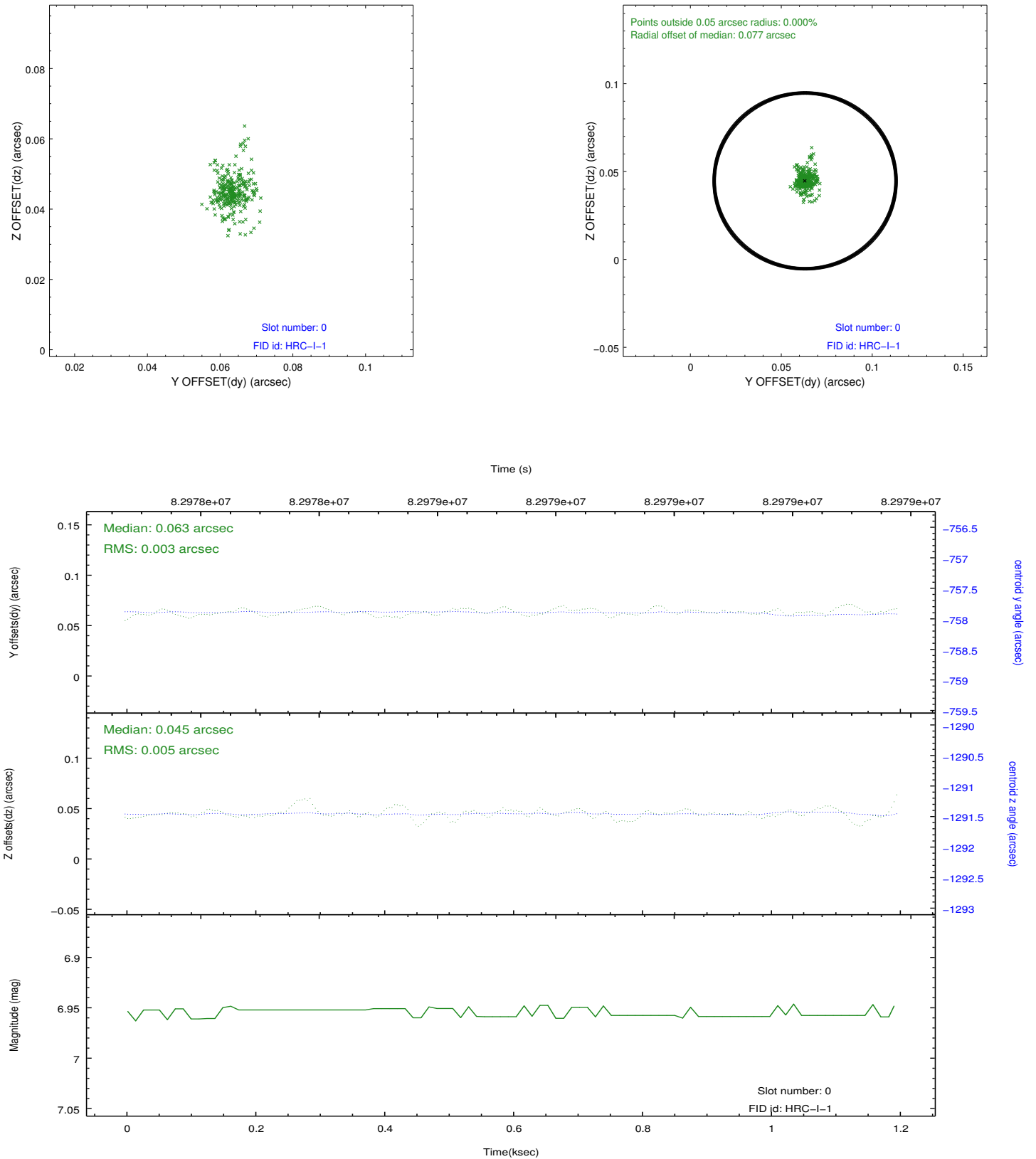


## 2.4.5 Slot 7

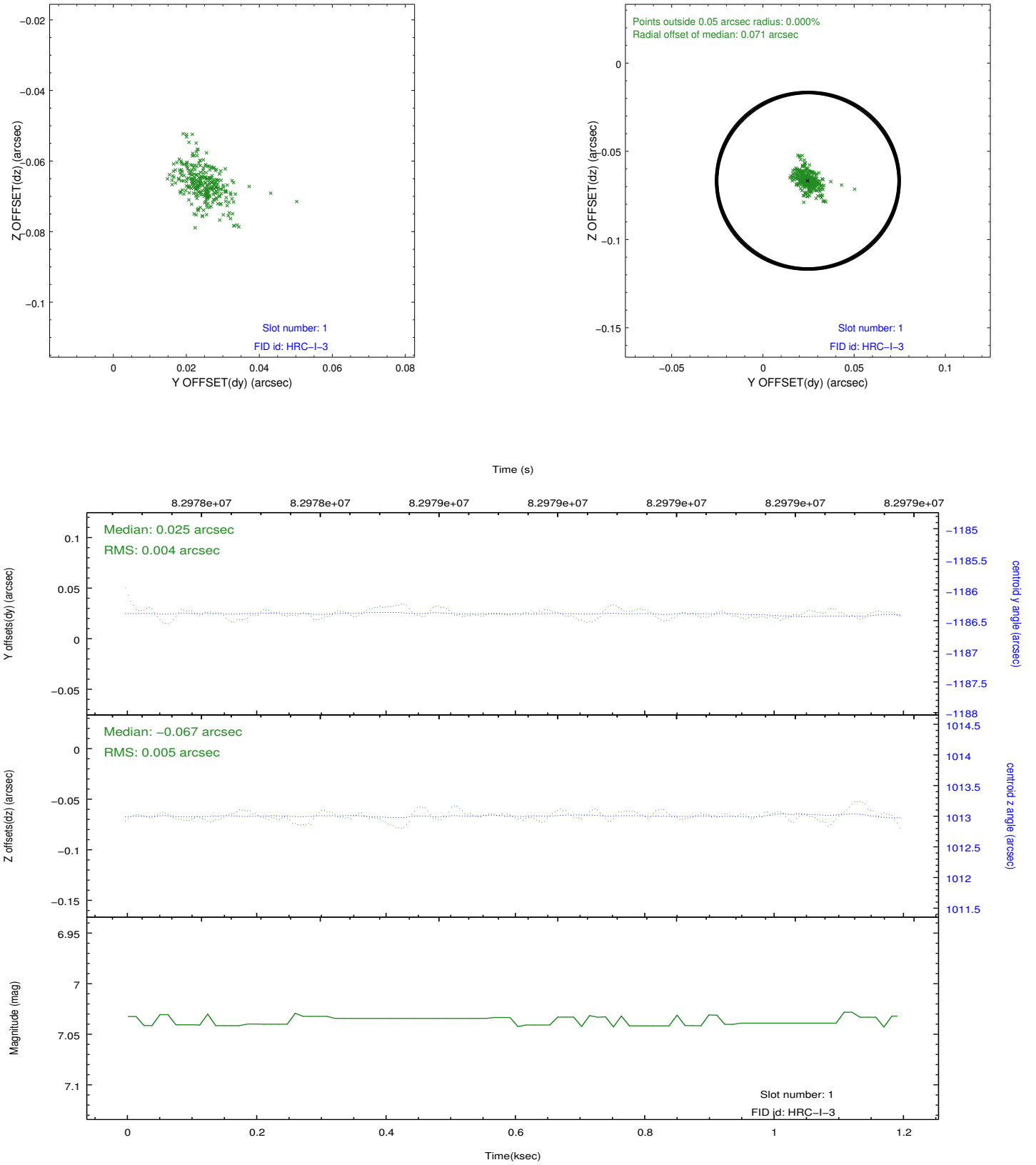


## 2.5 FID Slots

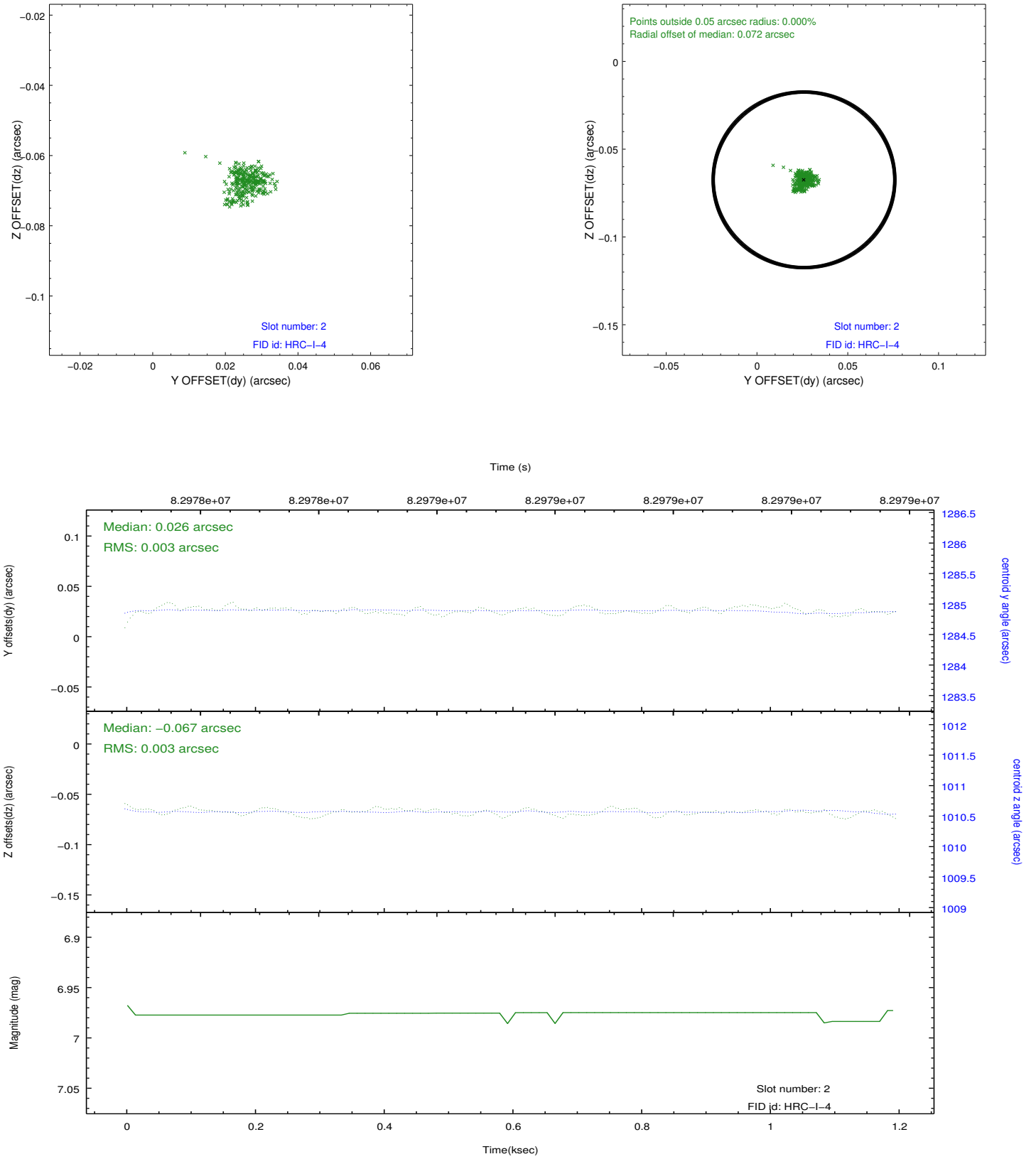
### 2.5.1 Slot 0



## 2.5.2 Slot 1



### 2.5.3 Slot 2





## A Summary

### A.1 Status

V&V Scientist	Beth Sundheim
V&V Date (YYYY-MM-DD)	2012.09.06
V&V Edition	1
V&V Disposition and Status	OK
V&V Charge Time	0.981

### A.2 Comments