

# V&V Reference Report

## L2 ASCDS Version : 7.6.9

Observation 2481 - L2 Version 001  
Chandra X-Ray Center

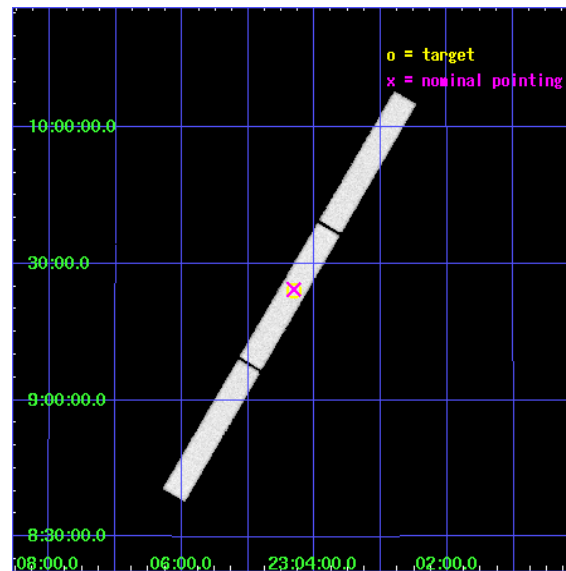
L2 Processing Date : Dec 11 2006

## Contents

<b>1</b>	<b>Front</b>	<b>2</b>
<b>2</b>	<b>OBI</b>	<b>3</b>
2.1	OBI . . . . .	3
2.1.1	Images . . . . .	3
2.1.2	Parameters . . . . .	4
2.1.3	Events . . . . .	4
2.2	Compared Parameters . . . . .	5
2.3	Aspect . . . . .	6
2.4	Star Slots . . . . .	9
2.4.1	Slot 3 . . . . .	9
2.4.2	Slot 4 . . . . .	10
2.4.3	Slot 5 . . . . .	11
2.4.4	Slot 6 . . . . .	12
2.4.5	Slot 7 . . . . .	13
2.5	FID Slots . . . . .	14
2.5.1	Slot 0 . . . . .	14
2.5.2	Slot 1 . . . . .	15
2.5.3	Slot 2 . . . . .	16
<b>3</b>	<b>Gratings</b>	<b>17</b>
3.1	LETG Arm . . . . .	17
<b>A</b>	<b>Summary</b>	<b>19</b>
A.1	Status . . . . .	19
A.2	Comments . . . . .	19

# 1 Front

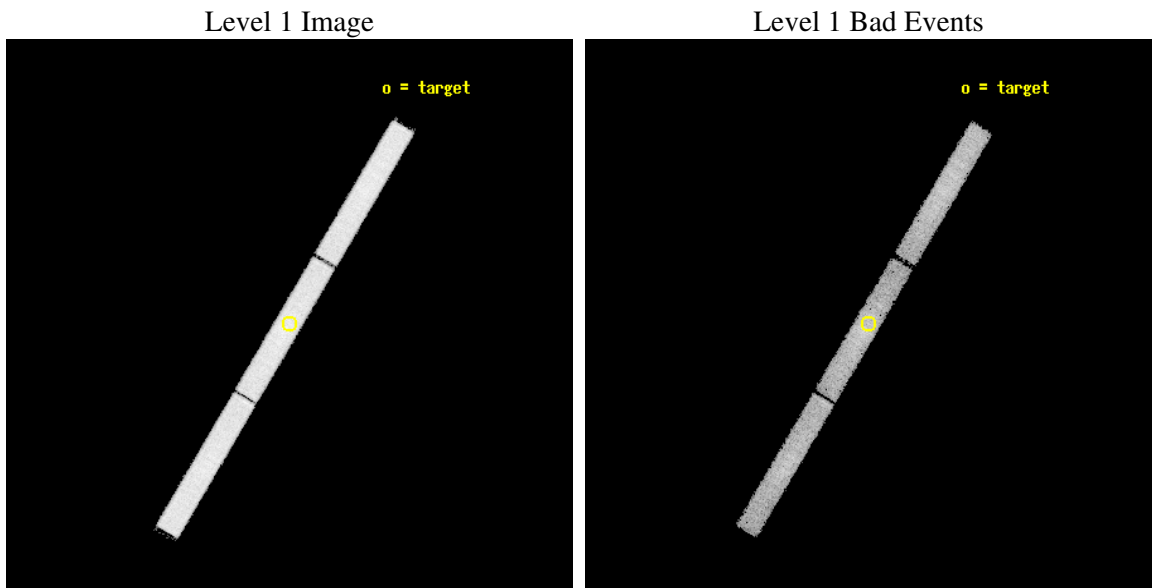
seq_num	100008
obs_id	2481
title	SOLVING THE PUZZLE OF COMETARY X-RAY ORIGIN: OBSERVATIONS OF COMET 10P/TEMPEL 2
observer	DR W. THOMAS VESTRAND
object	LINEAR 2001 A2
ra_targ	346.0802
dec_targ	9.40341
ra_nom	346.0779117147
dec_nom	9.4069735572205
roll_nom	120.51795385641
revision	2
ontime	2392.6063435972
livetime	2376.1060494472
l2events	140313



## 2 OBI

### 2.1 OBI

#### 2.1.1 Images



### 2.1.2 Parameters

obi_num	0
ascdsver	7.6.9
caldbver	3.2.4
date	2006-12-12T00:49:38
revision	2

sched_exp_time	2250.000000
ontime	2436.6813453138
l1events	243529

### 2.1.3 Events

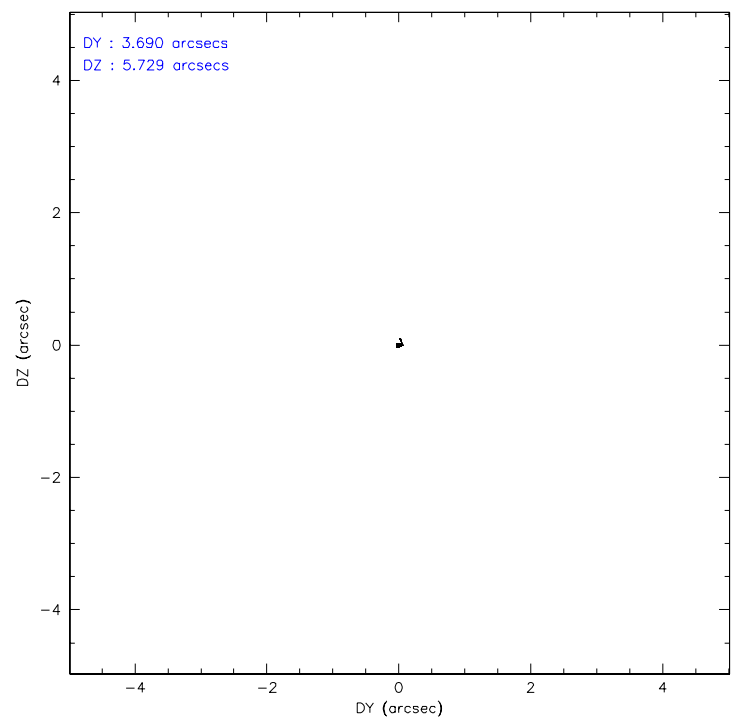
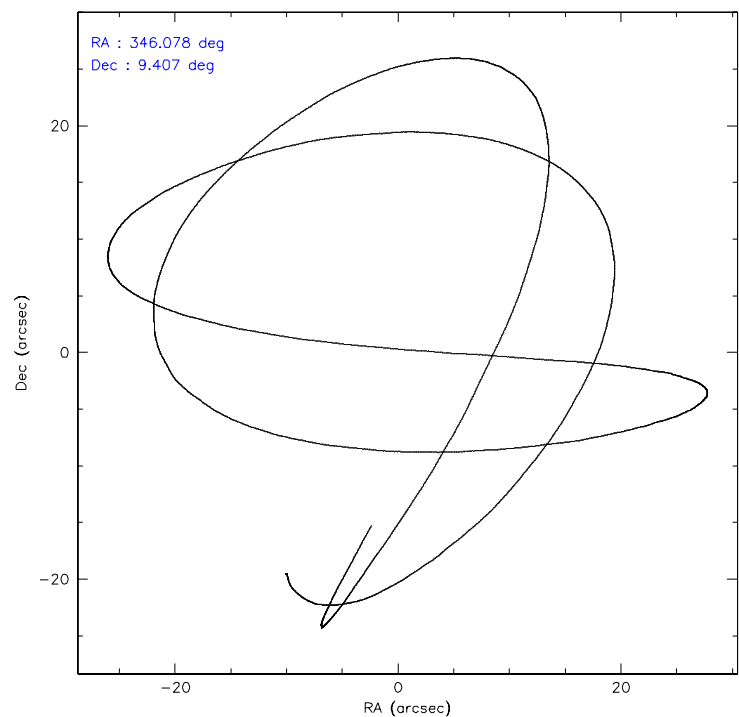
Level 1 Events

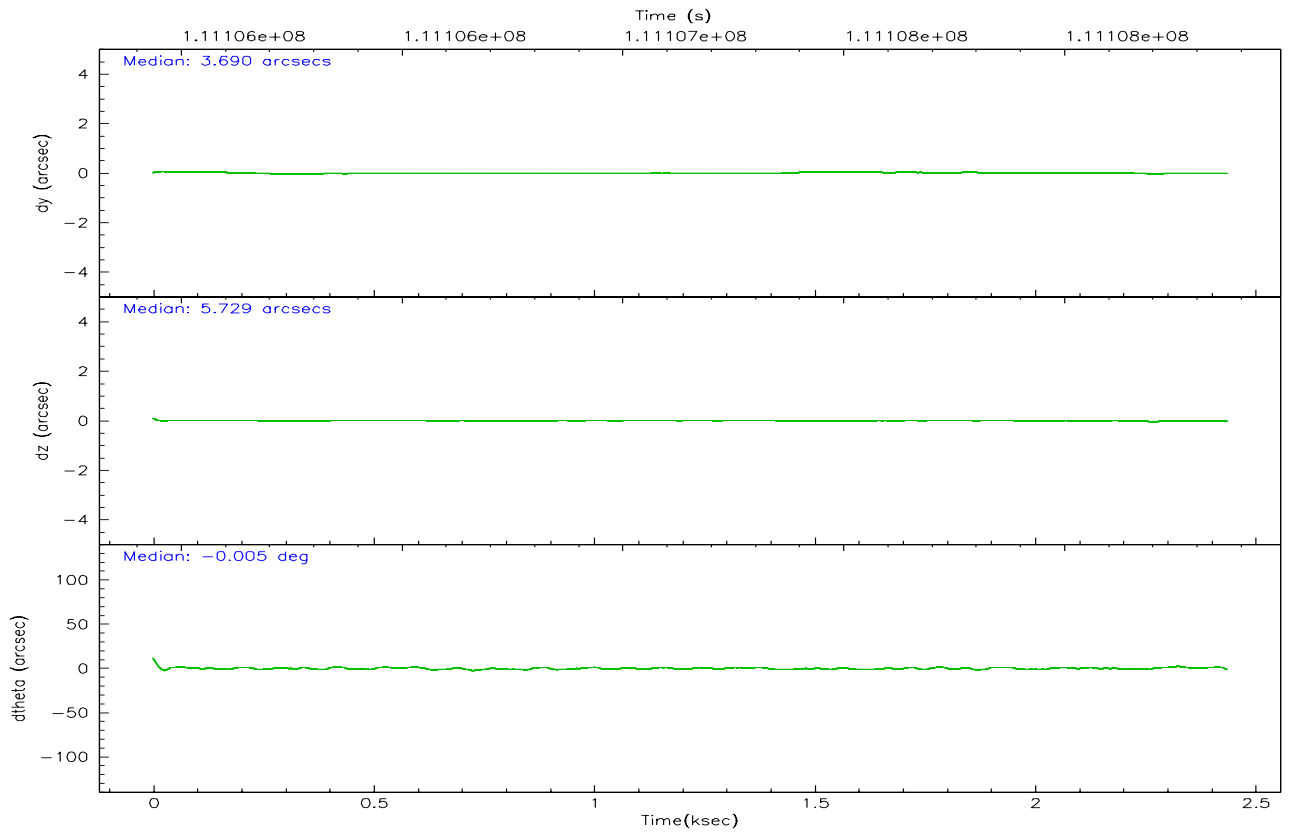
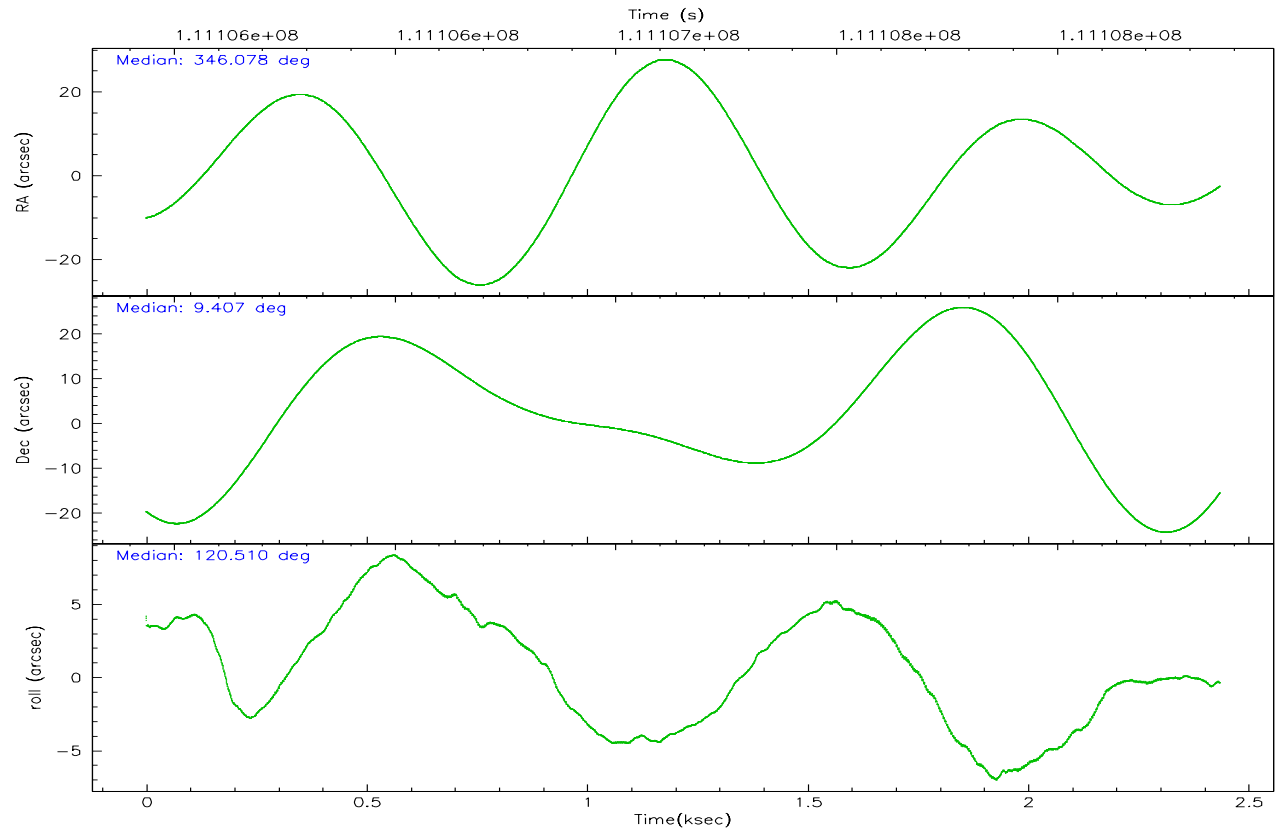
	<b>segment 1</b>	<b>segment 2</b>	<b>segment 3</b>
level 1 events	81242	80427	81860
rejected events	26799	27543	30493
rejected %	32%	34%	37%

## 2.2 Compared Parameters

Parameter	Planned	Actual	Parameter	Planned	Actual
Instrument	HRC	HRC	Obspar format version number	6	6
Detector	HRC-S	HRC-S	Obspar file type	PREDICTED	ACTUAL
Grating	LETG	LETG	Obspar update status	NONE	UPDATED
Data mode	OBSERVING	OBSERVING			
Observation mode	POINTING	POINTING			
Pointing RA	346.103819	346.0779117147048			
Pointing Dec	9.394689	9.406973557220502			
Pointing Roll	120.446380	120.5179538564142			
SIM focus pos (mm)	-1.429586	-1.428180813131781			
SIM defocus (mm)	0.1037507710433287	0.1051558262725154			
SIM translation stage pos (mm)	250.455976	250.466033080201			
SIM translation stage offset (mm)	0	-0.01005468664627074			
Observation start time	111106122.184000	111105746.06188			
Observation start date	2001-07-09T22:47:38	2001-07-09T22:42:26			
Observation end time	111108372.184000	111108505.36199			
Observation end date	2001-07-09T23:25:08	2001-07-09T23:28:25			

### 2.3 Aspect





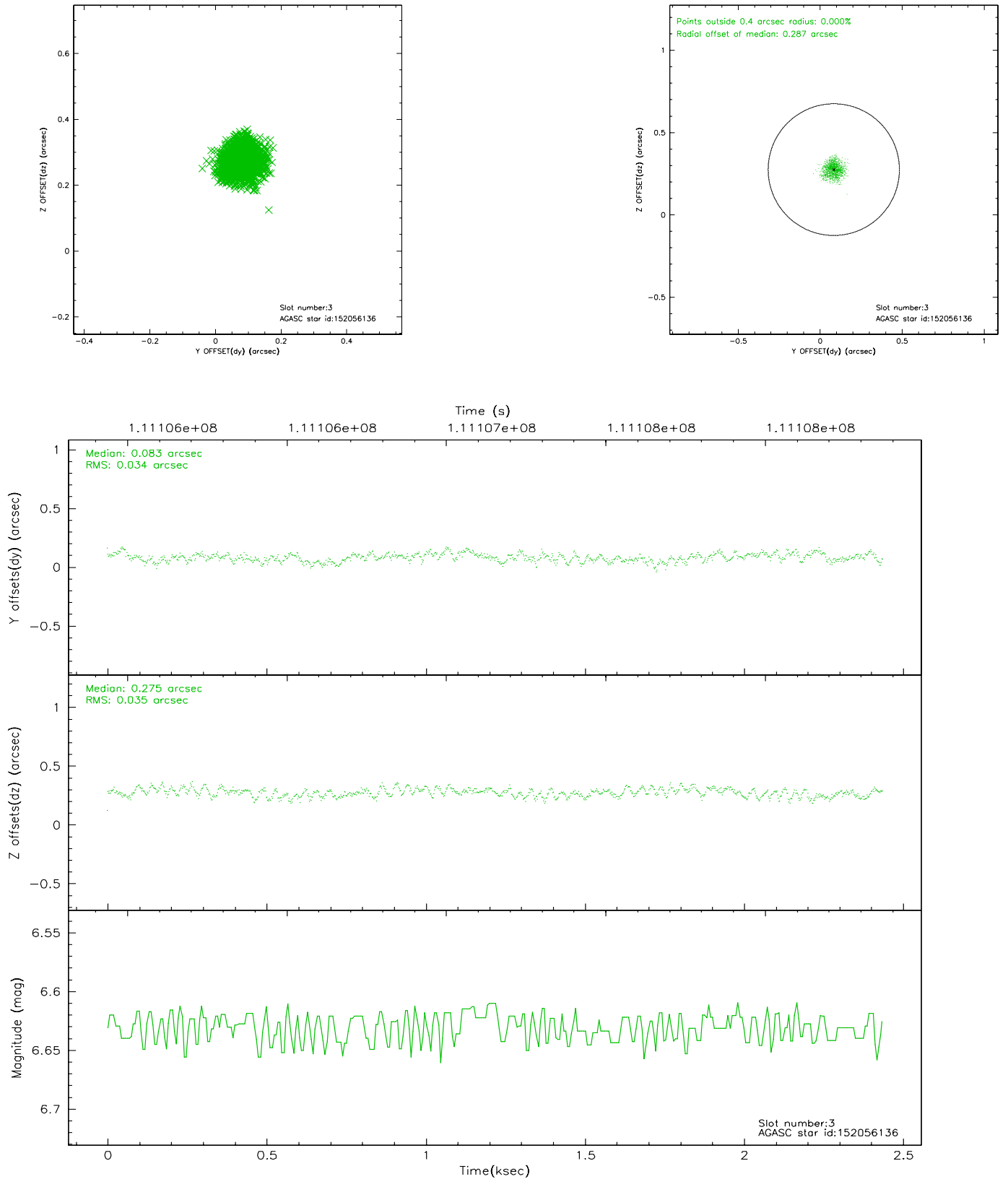
### Slot Statistics

slot	status	id	mag	n_pts	med_dy	med_dz	dr1	dr2	ra	dec	mean_y	mean_z
0	FID	HRC-S-1	6.98	595	0.125	-0.149	0.006	0.011	0.000000	0.000000	-1157.75	-454.31
1	FID	HRC-S-3	7.00	595	0.170	-0.050	0.007	0.013	0.000000	0.000000	-1162.41	574.55
2	FID	HRC-S-4	6.93	595	0.093	-0.098	0.005	0.008	0.000000	0.000000	1238.49	578.88
3	GUIDE	152056136	6.63	1190	0.083	0.275	0.053	0.081	346.466795	8.896005	-2198.60	-203.74
4	GUIDE	152046048	8.78	1190	-0.145	0.210	0.062	0.103	346.265854	9.604114	359.38	-878.01
5	GUIDE	152048440	8.52	1190	0.006	-0.041	0.067	0.107	346.200519	9.070077	-1178.74	294.68
6	GUIDE	152051496	8.89	1190	0.009	-0.156	0.094	0.152	345.877098	8.806843	-1414.17	1767.36
7	GUIDE	152055208	9.18	1189	0.053	-0.283	0.114	0.179	345.804159	8.661169	-1734.70	2258.18

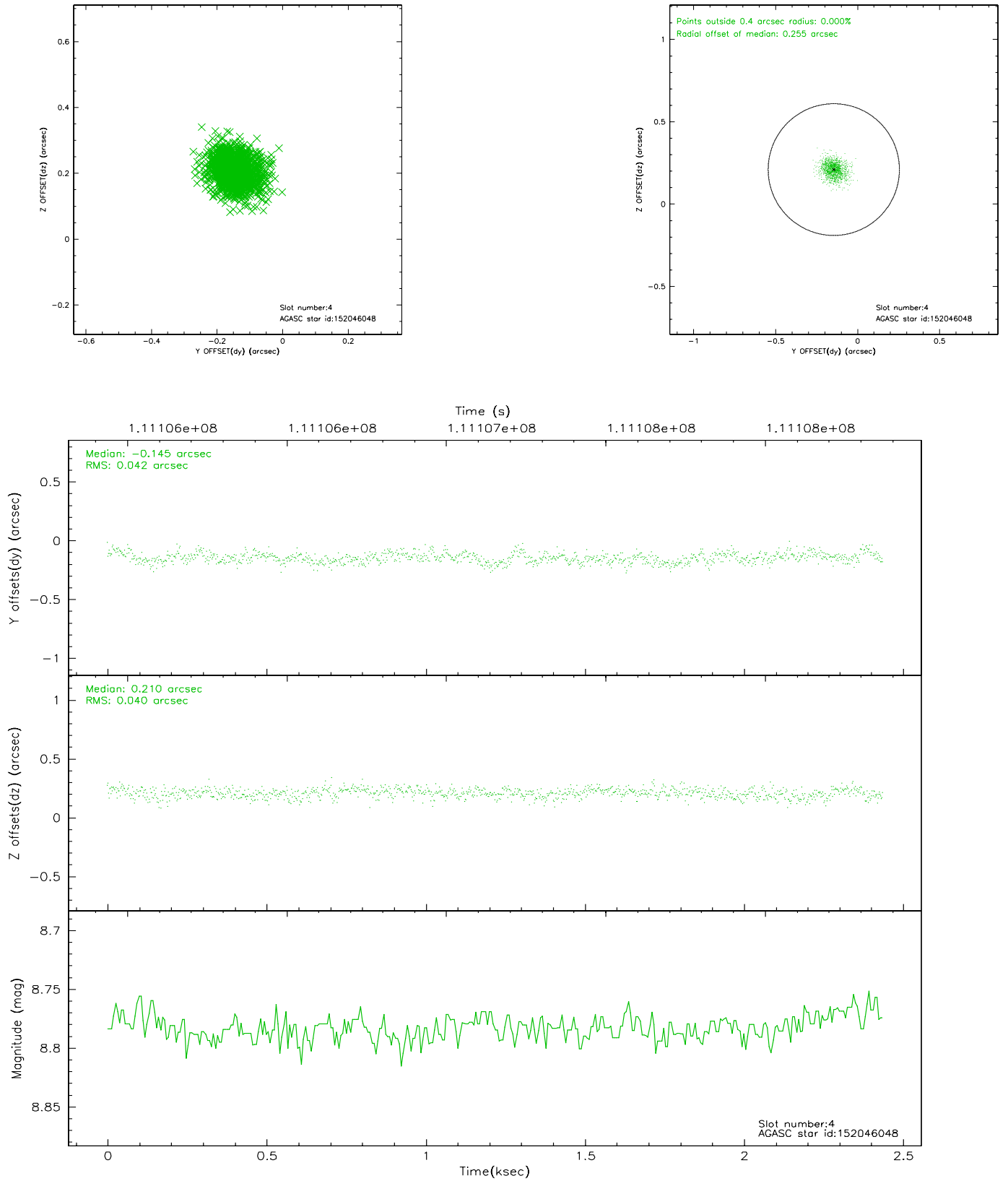


## 2.4 Star Slots

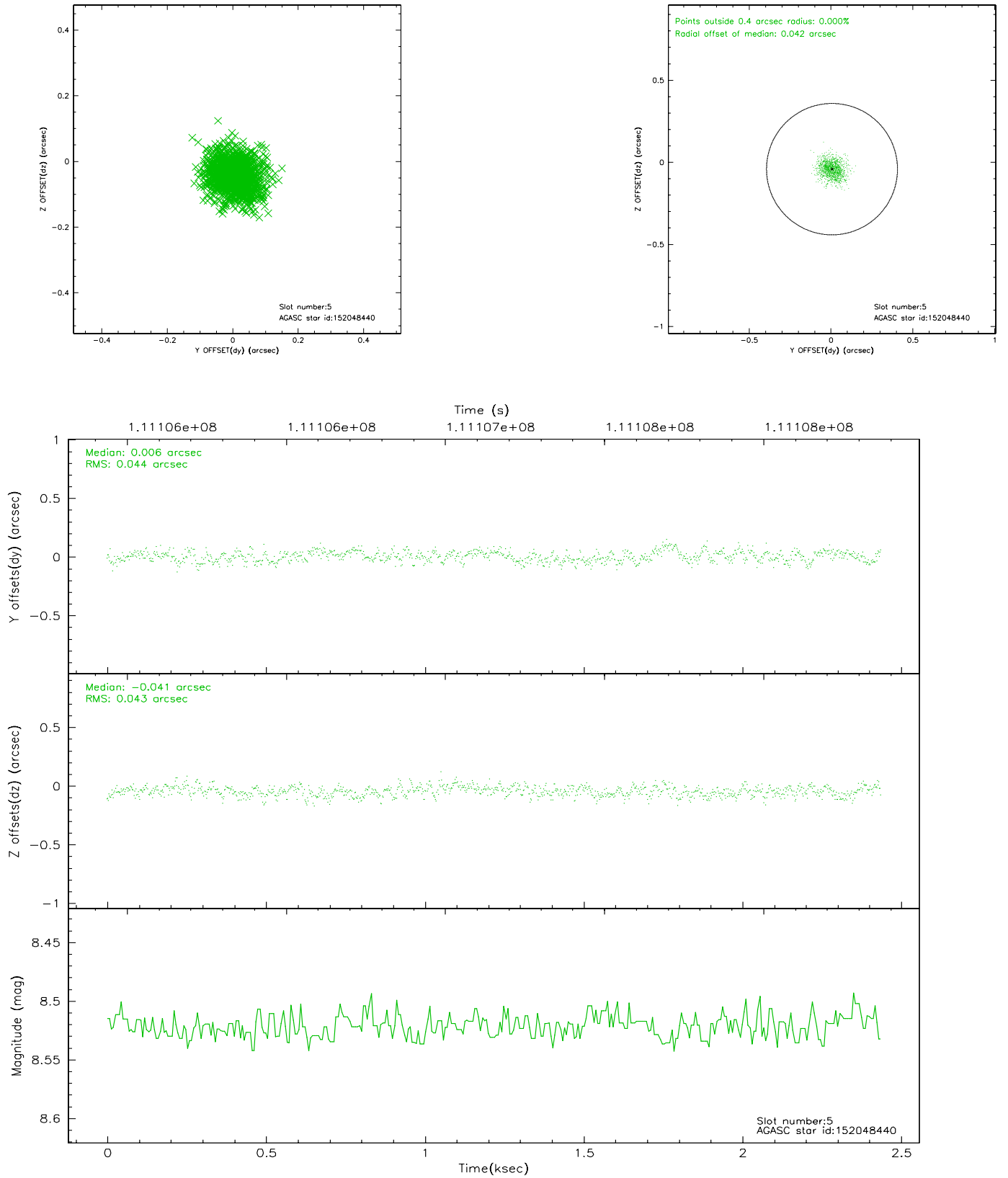
### 2.4.1 Slot 3



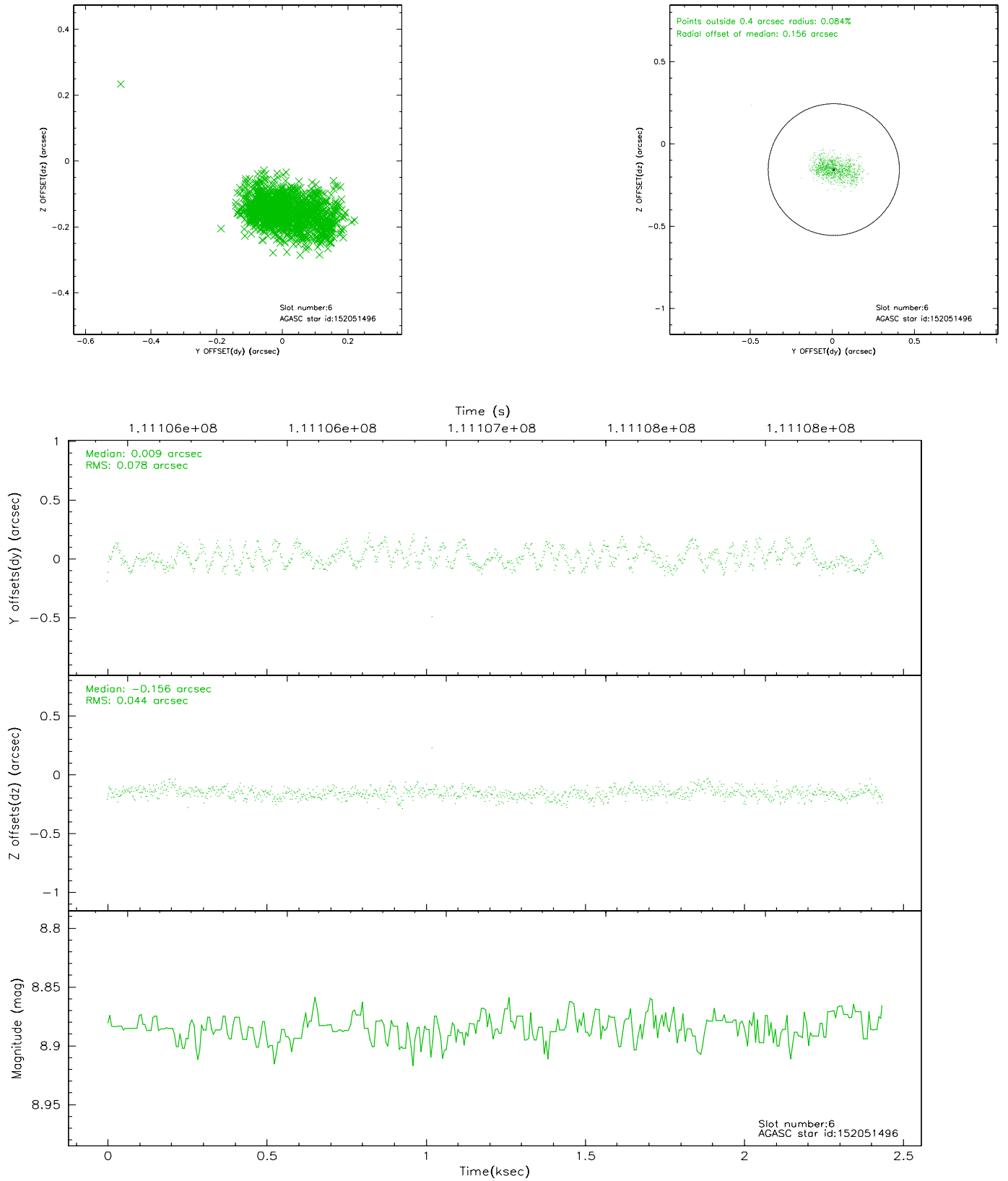
## 2.4.2 Slot 4



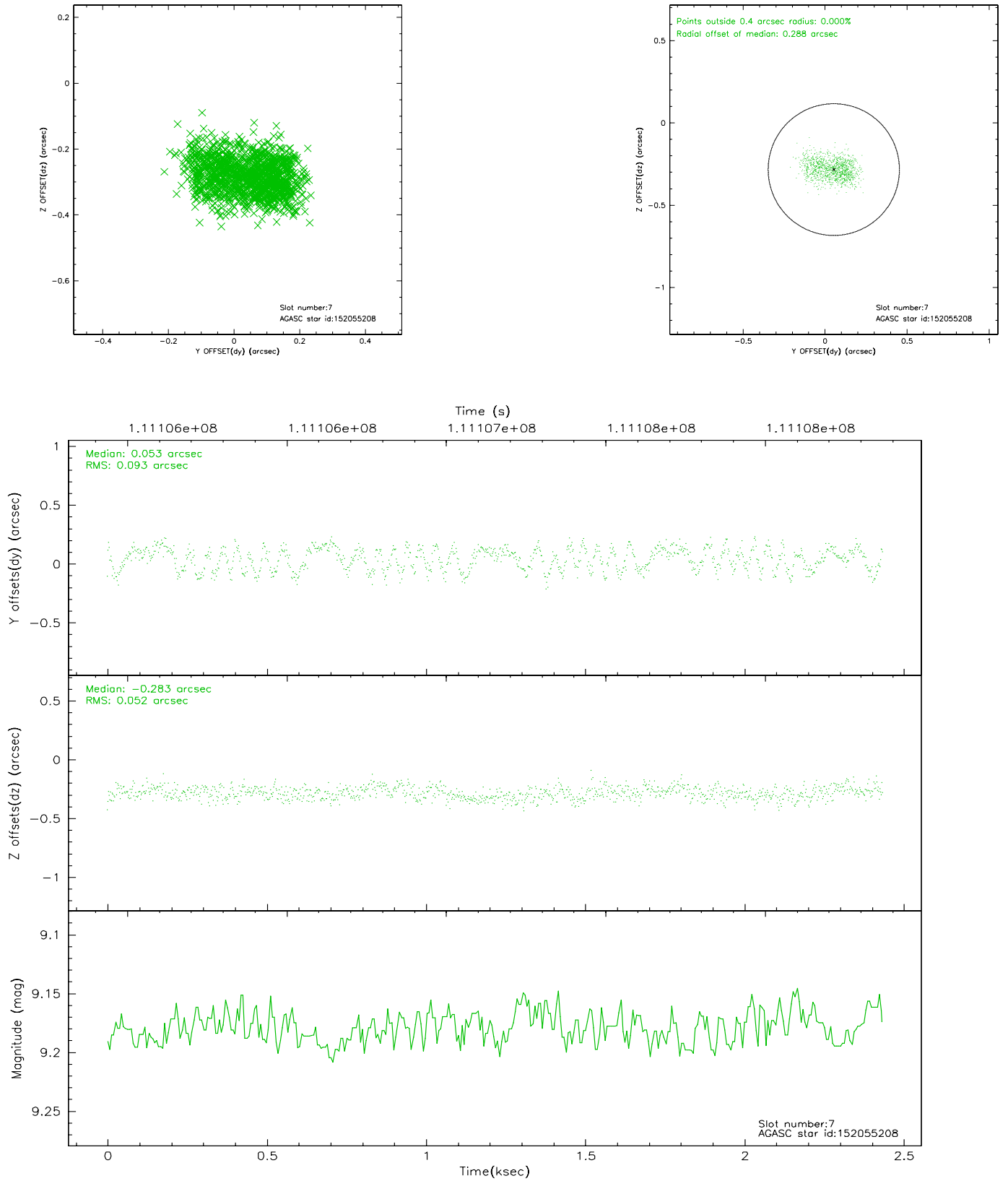
### 2.4.3 Slot 5



## 2.4.4 Slot 6

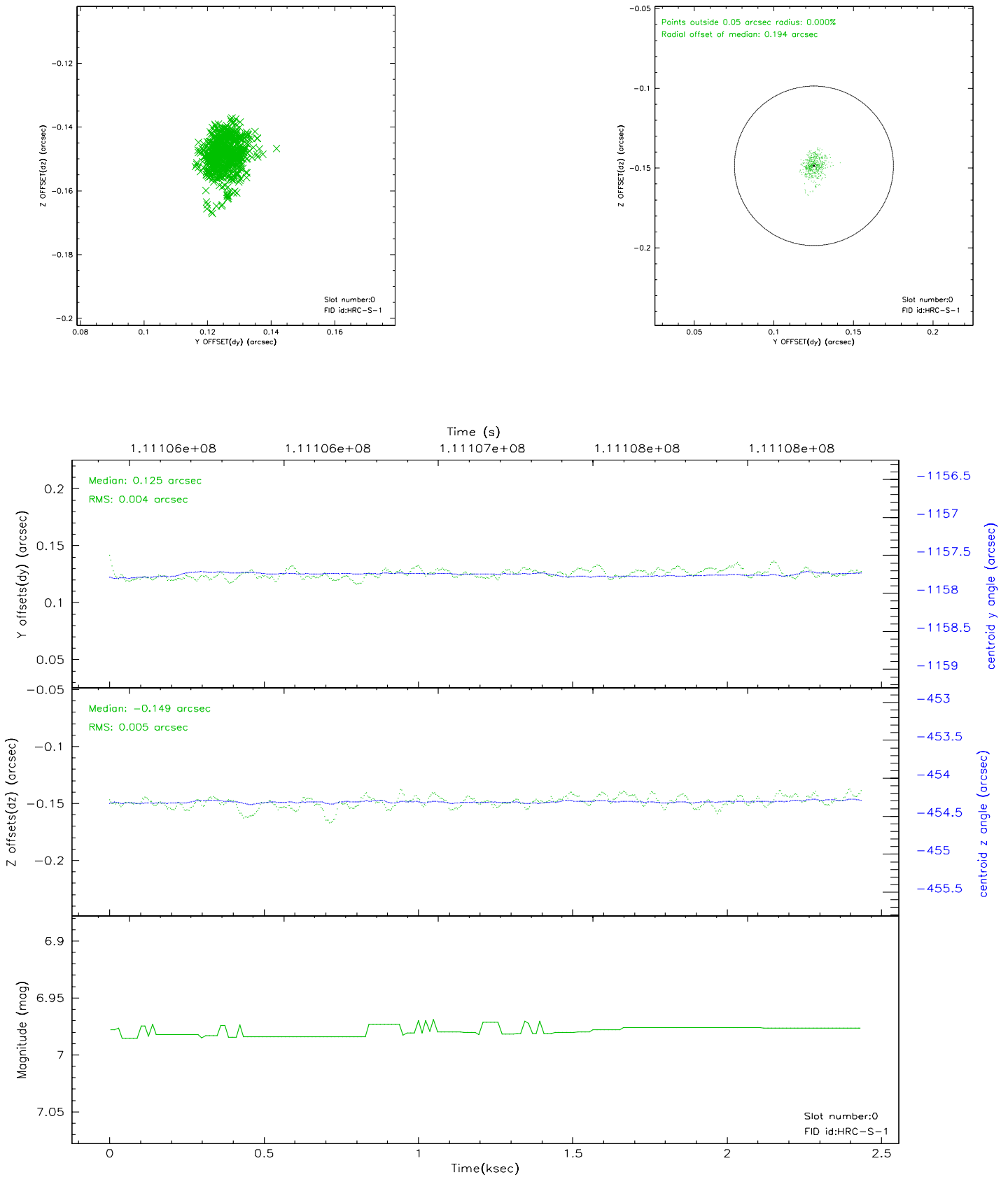


## 2.4.5 Slot 7

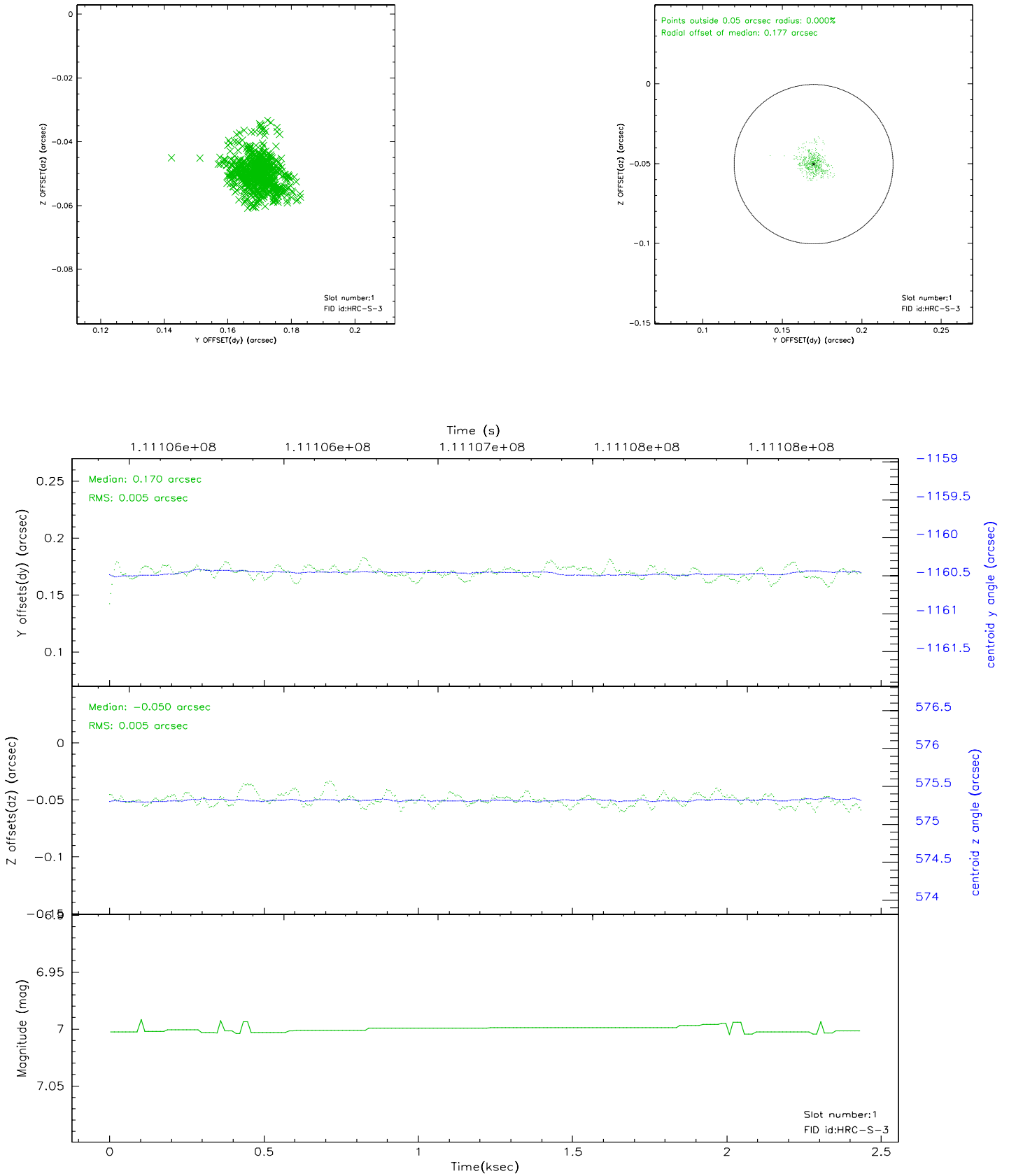


## 2.5 FID Slots

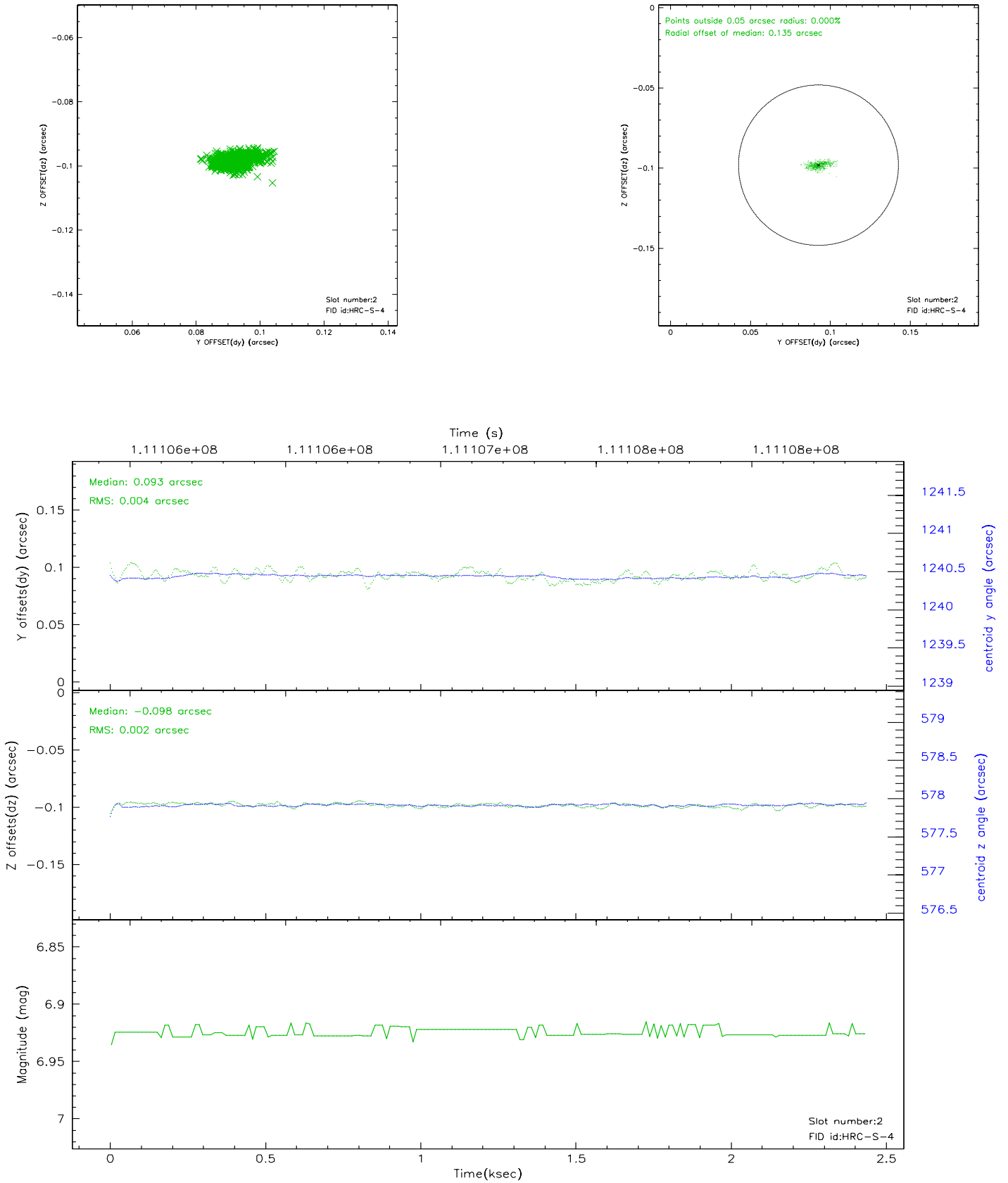
### 2.5.1 Slot 0



## 2.5.2 Slot 1



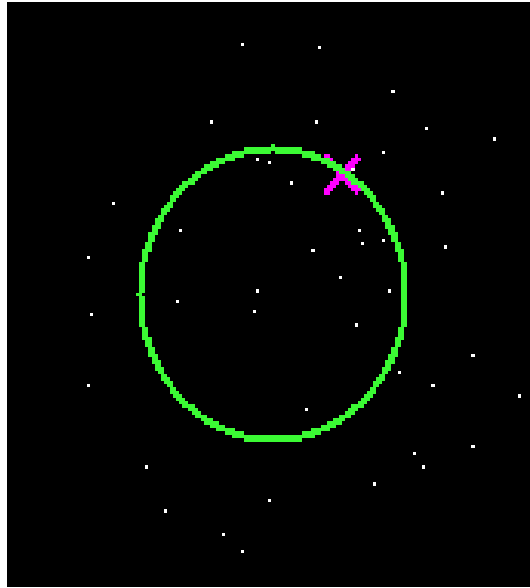
### 2.5.3 Slot 2



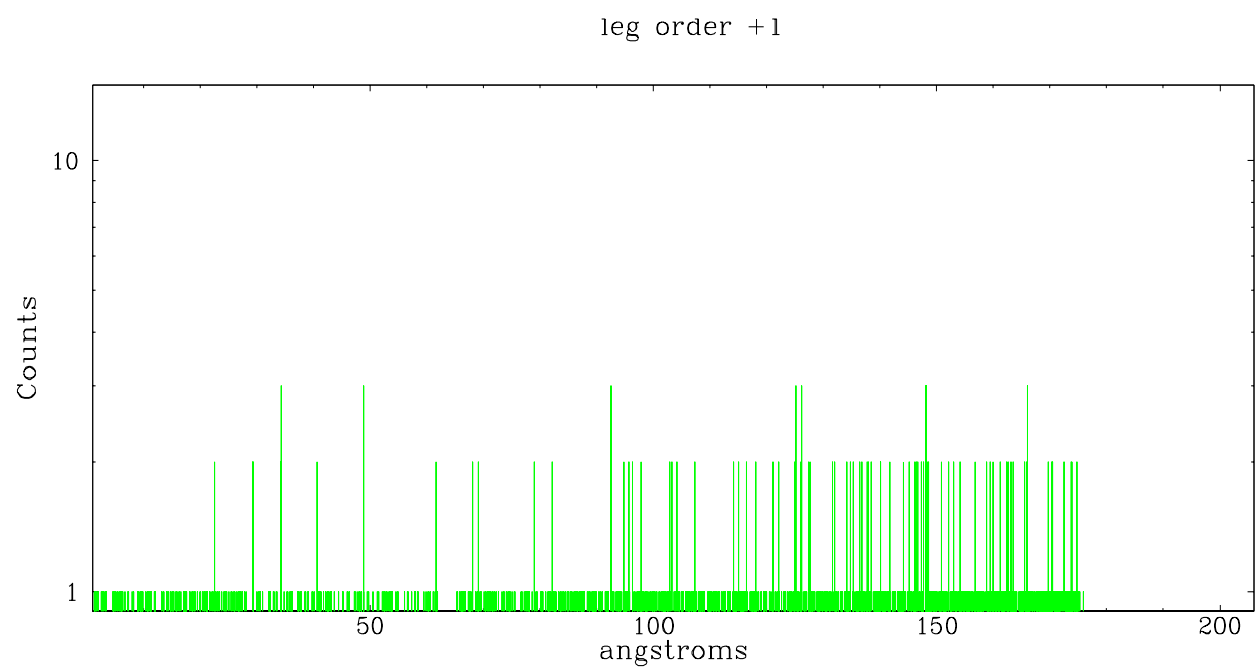
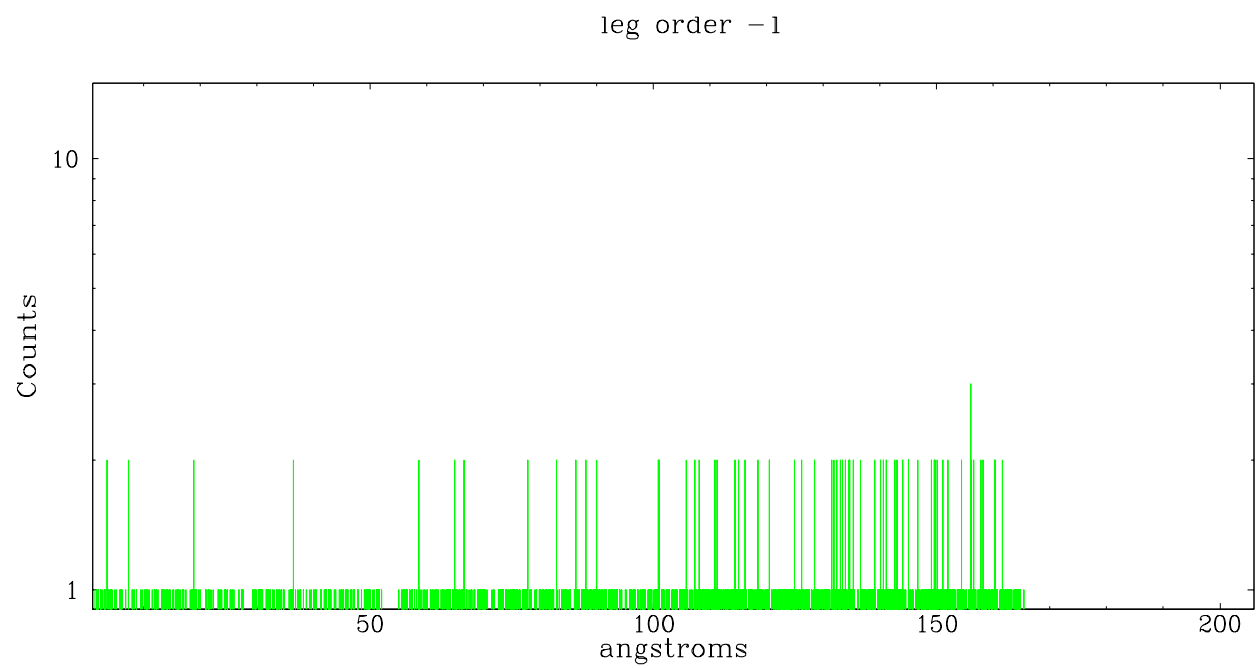


## 3 Gratings

### 3.1 LETG Arm



LETG Zero Order



# A Summary

## A.1 Status

V&V Scientist	Jen Lauer
V&V Date (YYYY-MM-DD)	2006.12.15
V&V Edition	1
V&V Disposition and Status	OK
V&V Charge Time	2.4

## A.2 Comments

Monitor constraint met.

Tgdetect found no sources, 0th order position defaulted to ra\_targ, dec\_targ.

Users should run sso\_freeze or the equivalent on the suite of comet observations before rerunning tgdetect.