

V&V Reference Report

L2 ASCDS Version : 8.4.5

Observation 2391 - L2 Version 3
Chandra X-Ray Center

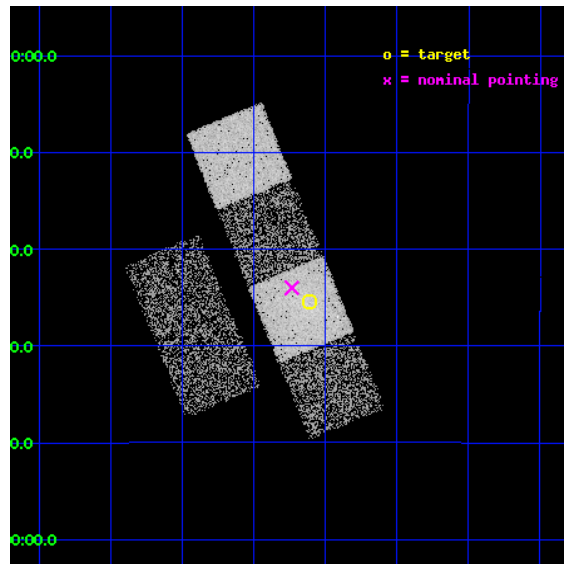
L2 Processing Date : Sep 6 2012

Contents

1	Front	2
2	OBI	3
2.1	OBI	3
2.1.1	Images	3
2.1.2	Bias	3
2.1.3	Parameters	4
2.1.4	Events	4
2.2	Compared Parameters	5
2.3	Aspect	6
2.4	Star Slots	9
2.4.1	Slot 3	9
2.4.2	Slot 4	10
2.4.3	Slot 5	11
2.4.4	Slot 6	12
2.4.5	Slot 7	13
2.5	FID Slots	14
2.5.1	Slot 0	14
2.5.2	Slot 1	15
2.5.3	Slot 2	16
A	Summary	17
A.1	Status	17
A.2	Comments	17

1 Front

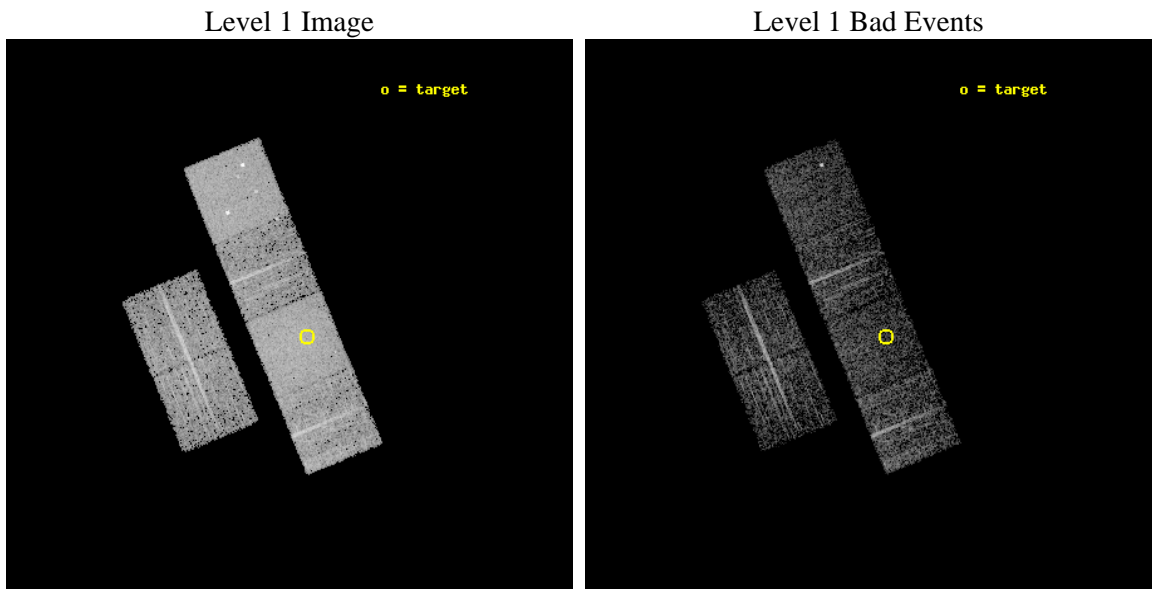
seq_num	100021	Sequence number
obs_id	2391	Observation id
title	X-RAY SPECTROSCOPY OF COMET C/1999 T1	Proposal title
observer	Dr. Vladimir Krasnopolsky	Principal investigator
object	C/1999 T1	Source name
dtcycle	0	
cycle	P	events from which exps? Prim/Second/Both
ra_targ	232.27881	Observer's specified target RA [deg]
dec_targ	-3.59135	Observer's specified target Dec [deg]
ra_nom	232.30889470152	Nominal RA [deg]
dec_nom	-3.5666986225456	Nominal Dec [deg]
roll_nom	67.689907487714	Nominal Roll [deg]
revision	3	Processing version of data
ontime	3350.4000031054	Sum of GTIs [s]
liveltime	3307.9752208974	Livetime [s]
ontime2	3350.4000031054	Sum of GTIs [s]
ontime3	3350.4000031054	Sum of GTIs [s]
ontime5	3350.4000031054	Sum of GTIs [s]
ontime6	3350.4000031054	Sum of GTIs [s]
ontime7	3350.4000031054	Sum of GTIs [s]
ontime8	3350.4000031054	Sum of GTIs [s]
l2events	46140	Number of level 2 events



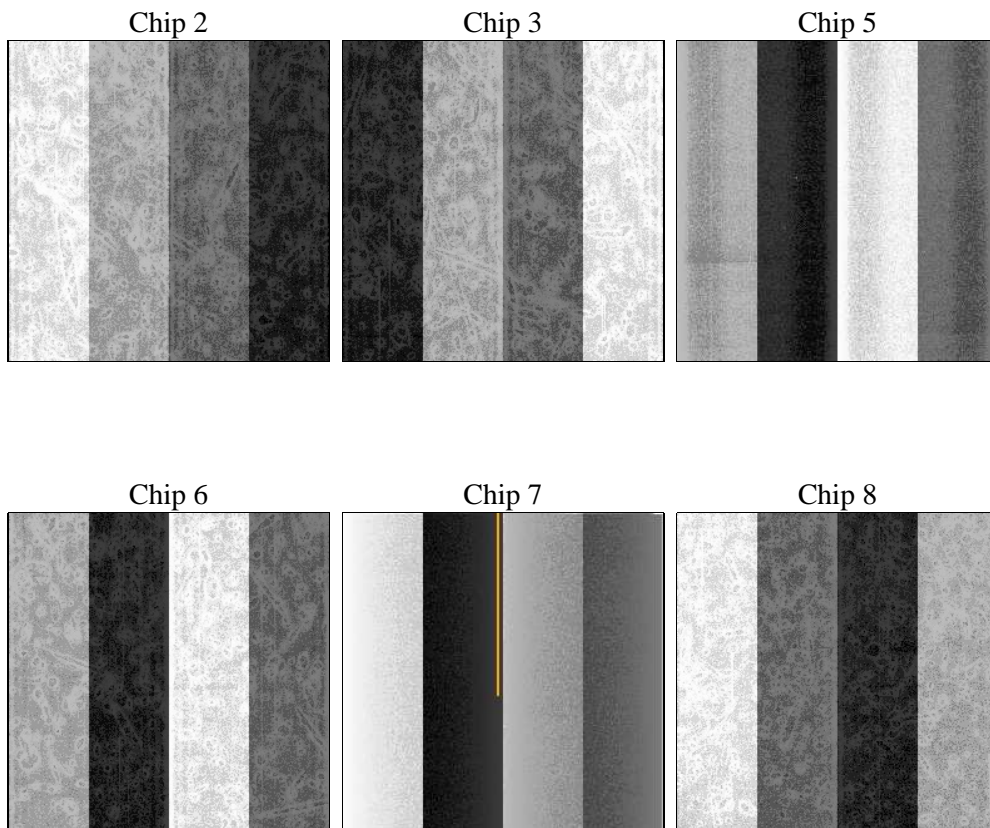
2 OBI

2.1 OBI

2.1.1 Images



2.1.2 Bias



2.1.3 Parameters

obi_num	0	Obi number	sched_exp_time	3400.000000	[s] Scheduled observation exposure time
ascdsver	8.4.5	Processing system revision	ontime	3350.4000031054	Sum of GTIs [s]
caldsver	4.5.1.1	 	ontime2	3350.4000031054	Sum of GTIs [s]
date	2012-09-06T11:14:48	Date and time of file creation	ontime3	3350.4000031054	Sum of GTIs [s]
revision	3	Processing version of data	ontime5	3350.4000031054	Sum of GTIs [s]
			ontime6	3350.4000031054	Sum of GTIs [s]
			ontime7	3350.4000031054	Sum of GTIs [s]
			ontime8	3350.4000031054	Sum of GTIs [s]
			l1events	159170	Number of level 1 events

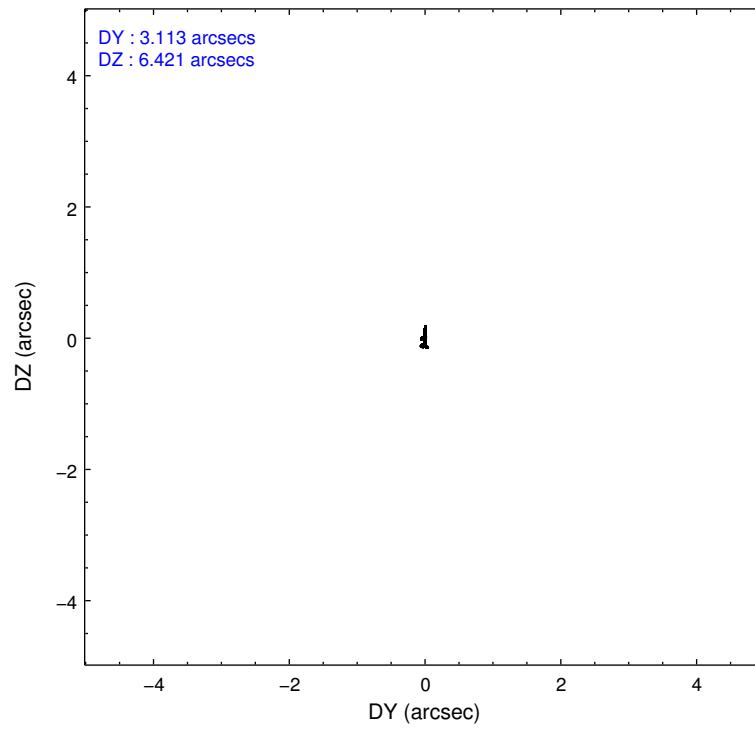
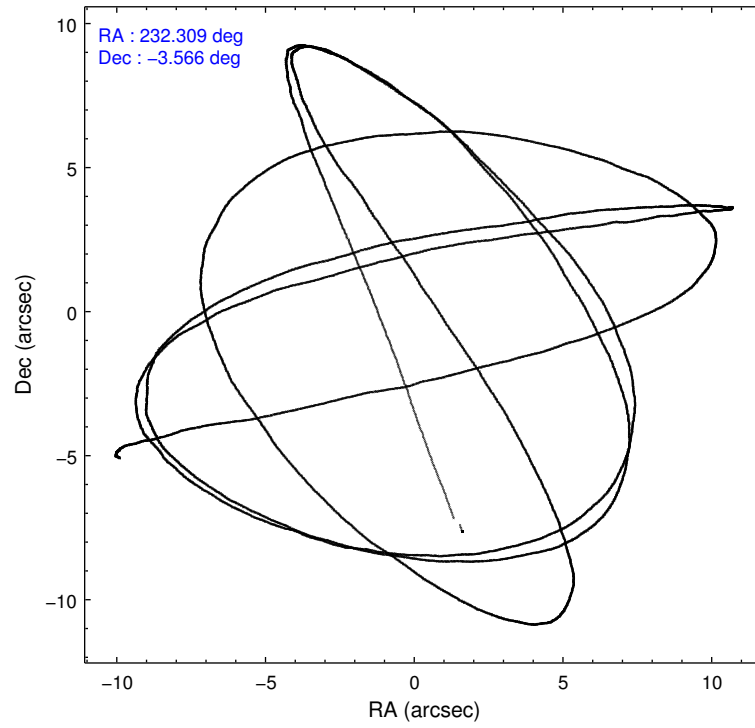
2.1.4 Events

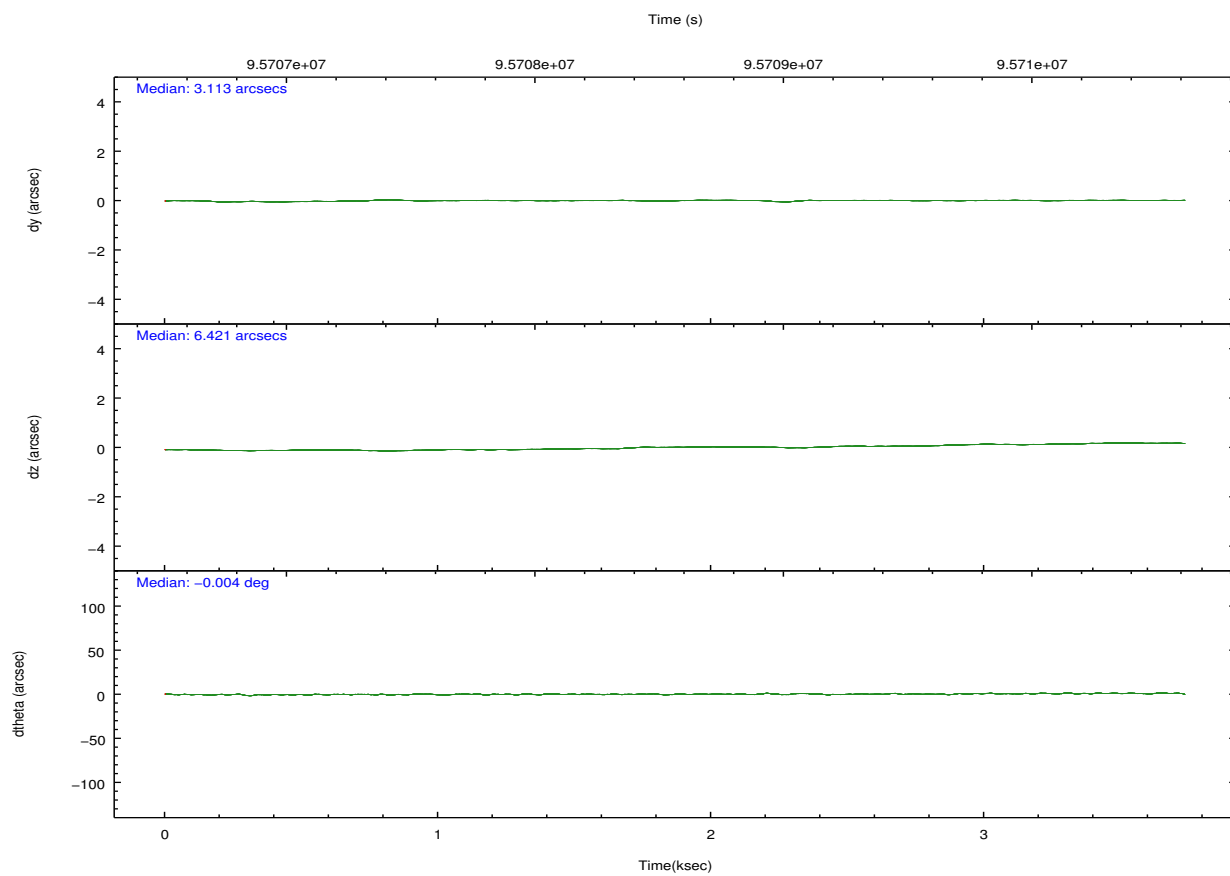
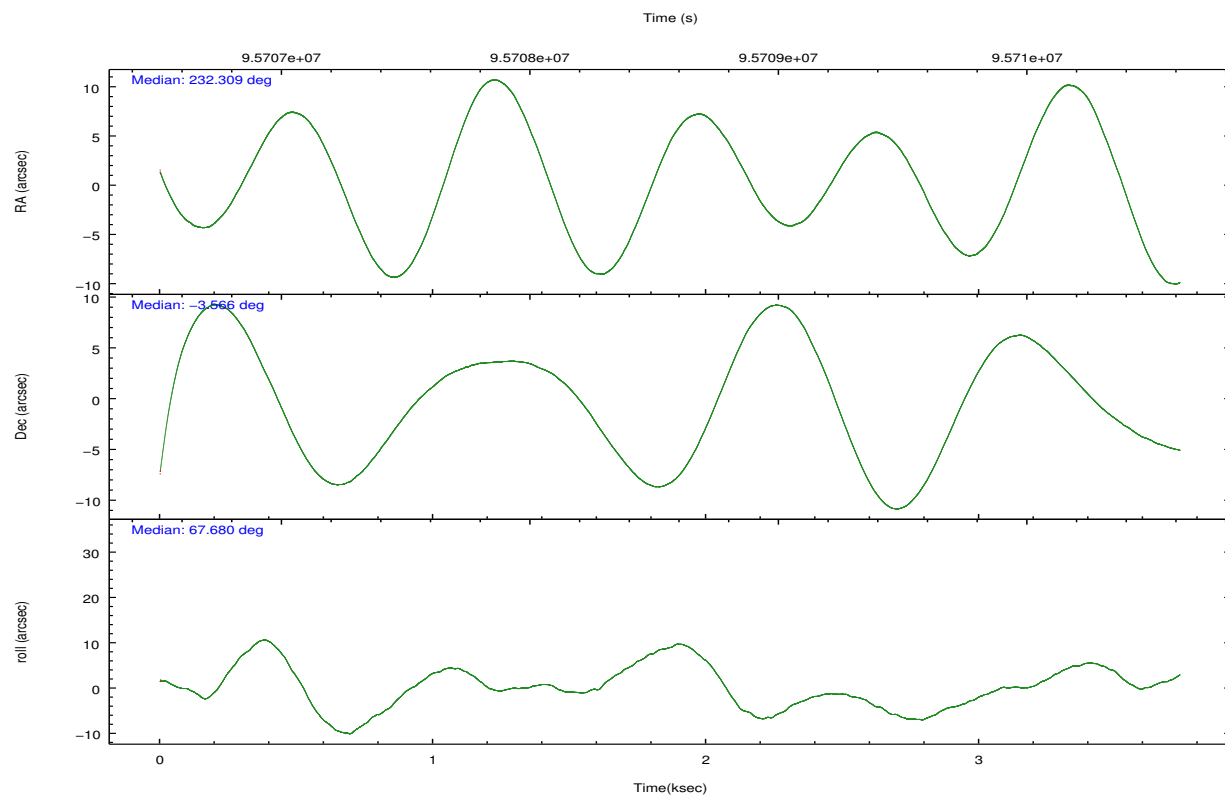
	ccd 2	ccd 3	ccd 5	ccd 6	ccd 7	ccd 8		ccd 2	ccd 3	ccd 5	ccd 6	ccd 7	ccd 8
level 1 events	21115	20295	34942	20849	34476	27493	grade 0 events	1366	1270	3311	1567	3587	2179
rejected events	18397	17691	15912	17770	15198	21434		6%	6%	9%	7%	10%	7%
rejected %	87%	87%	45%	85%	44%	77%	grade 1 events	10	19	33	9	19	15
								0%	0%	0%	0%	0%	0%
							grade 2 events	492	481	5426	513	3943	1270
								2%	2%	15%	2%	11%	4%
							grade 3 events	221	244	920	244	1664	572
								1%	1%	2%	1%	4%	2%
							grade 4 events	237	207	879	255	1752	564
								1%	1%	2%	1%	5%	2%
							grade 5 events	691	780	2213	832	2625	1088
								3%	3%	6%	3%	7%	3%
							grade 6 events	405	404	8523	503	8370	1480
								1%	1%	24%	2%	24%	5%
							grade 7 events	17693	16890	13637	16926	12516	20325
								83%	83%	39%	81%	36%	73%

2.2 Compared Parameters

Parameter	Planned	Actual	Parameter	Planned	Actual
Instrument	ACIS	ACIS	Obspar format version number	7	7
Detector	ACIS-235678	ACIS-235678	Obspar file type	PREDICTED	ACTUAL
Grating	NONE	NONE	Obspar update status	NONE	UPDATED
Data mode	FAINT	FAINT	Number of optional ACIS chips dropped	0	0
Observation mode	POINTING	POINTING	On-chip summing requested	N	N
[deg] Pointing RA	232.312838	232.3088947015174	Subarray requested	NONE	NONE
[deg] Pointing Dec	-3.593849	-3.566698622545553	Alternating exposures requested	N	N
[deg] Pointing Roll	67.533548	67.68990748771432	[s] Primary exposure time	0.000000	3.2
[mm] SIM focus pos	-0.684267	-0.6828225247311905			
[mm] SIM defocus	0	0.001444936568705701			
[mm] SIM translation stage pos	-190.132523	-190.1400660498719			
[mm] SIM translation stage offset	0	0.00754346686406393			
[s] Observation start time (MET)	95707034.184000	95706003.502561			
Observation start date	2001-01-12T17:16:10	2001-01-12T17:00:03			
[s] Observation end time (MET)	95710434.184000	95711526.71527299			
Observation end date	2001-01-12T18:12:50	2001-01-12T18:32:06			
Read mode	TIMED	TIMED			

2.3 Aspect



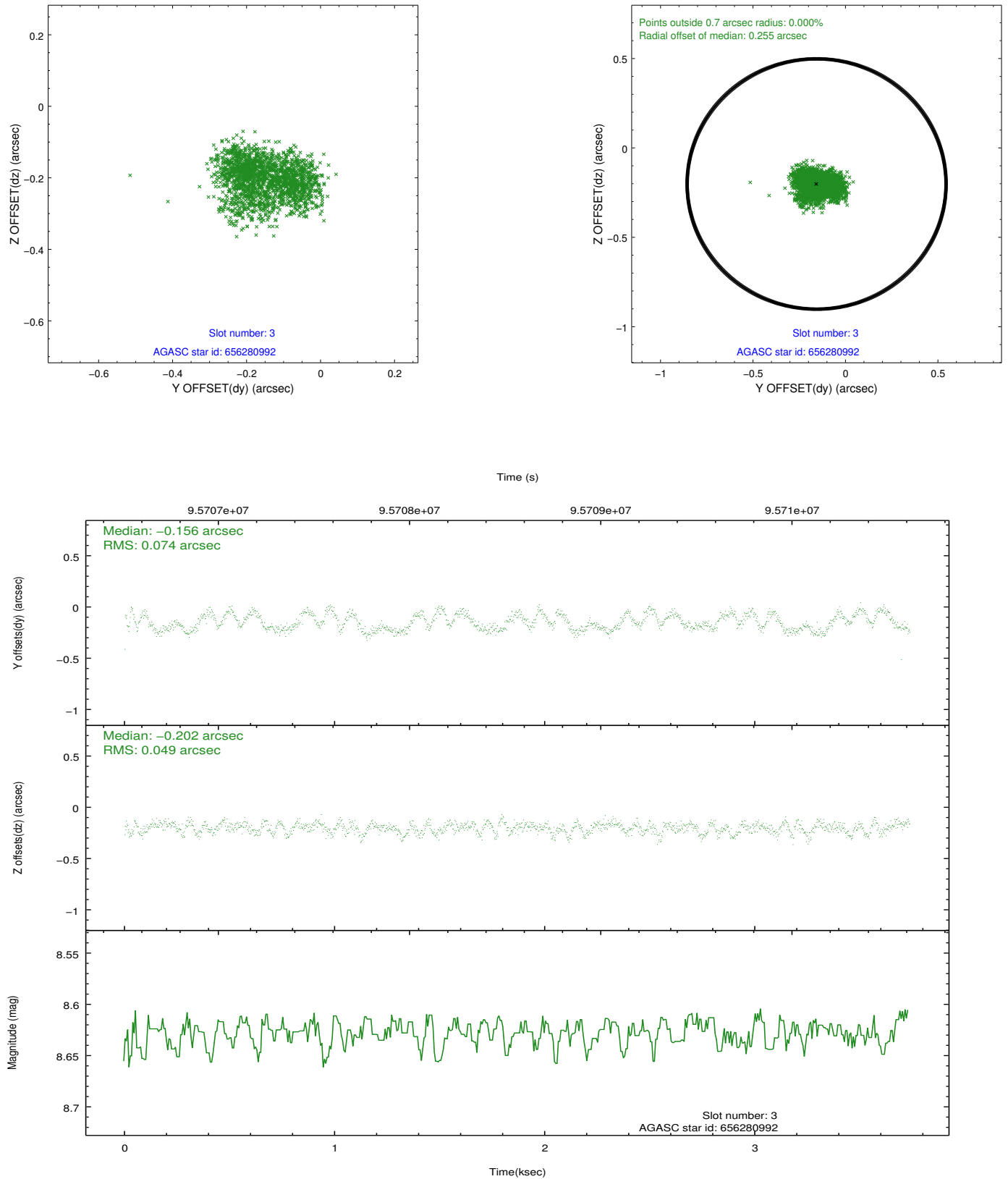


Slot Statistics

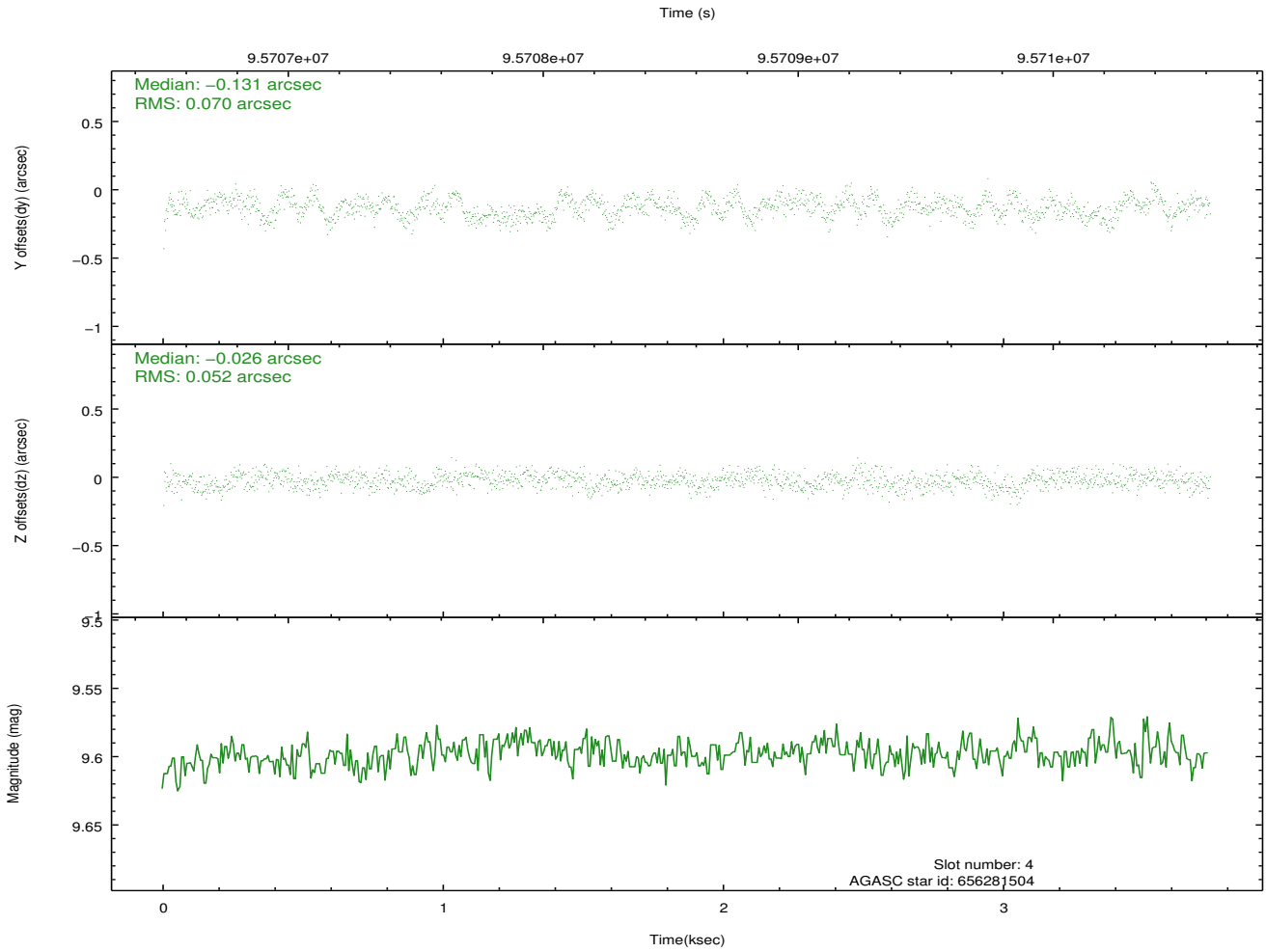
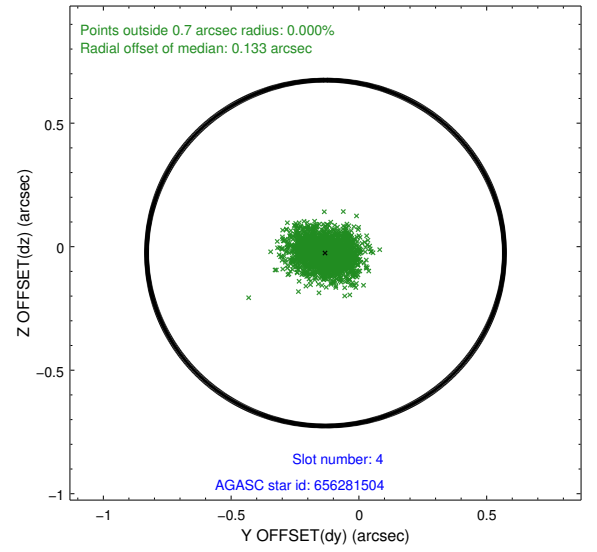
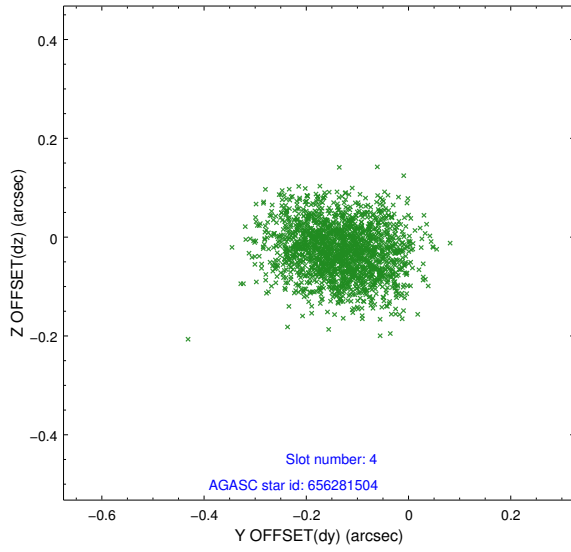
slot	status	id	mag	n_pts	med_dy	med_dz	dr1	dr2	ra	dec	mean_y	mean_z
0	FID	ACIS-S-2	7.11	912	-0.017	0.015	0.006	0.010	0.000000	0.000000	-755.75	-1727.56
1	FID	ACIS-S-4	7.21	911	-0.019	0.004	0.005	0.010	0.000000	0.000000	2156.75	179.20
2	FID	ACIS-S-5	7.24	910	0.005	-0.011	0.007	0.011	0.000000	0.000000	-1806.42	174.74
3	GUIDE	656280992	8.63	1821	-0.156	-0.202	0.098	0.143	231.834406	-3.038806	1187.26	2352.75
4	GUIDE	656281504	9.60	1821	-0.131	-0.026	0.094	0.152	232.078288	-3.158892	1123.95	1378.86
5	GUIDE	656806488	9.69	1820	0.154	0.129	0.119	0.183	232.003950	-3.770925	-1013.74	782.33
6	GUIDE	656282800	9.82	1822	0.088	0.031	0.094	0.157	232.090203	-3.511604	-33.94	852.79
7	GUIDE	656281520	10.50	1818	0.041	0.071	0.174	0.294	231.927658	-2.755166	2259.18	2434.63

2.4 Star Slots

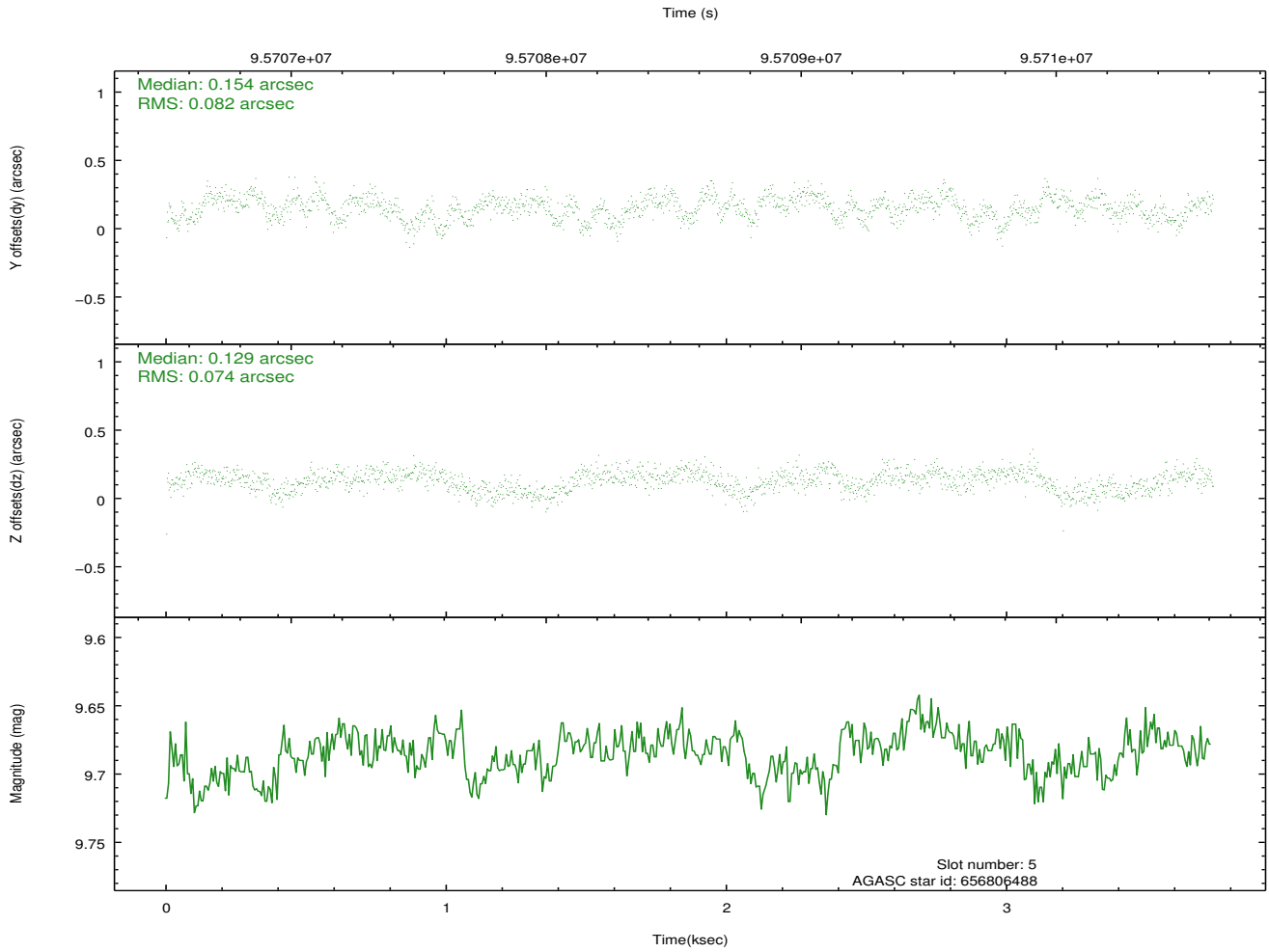
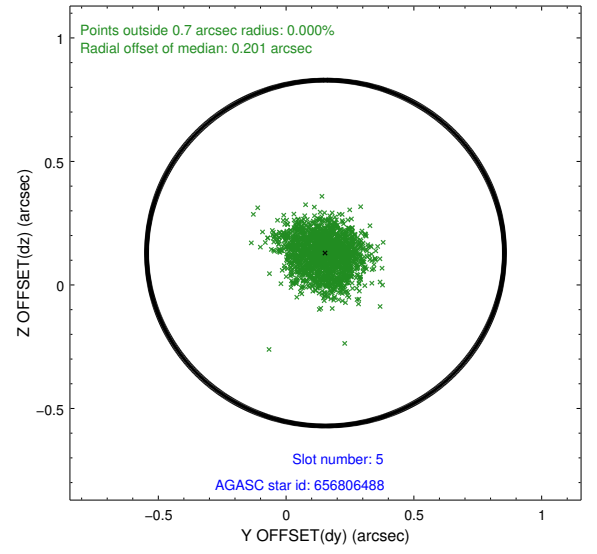
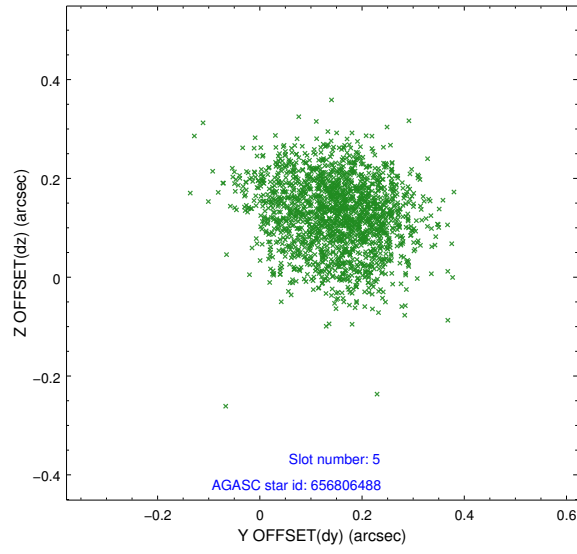
2.4.1 Slot 3



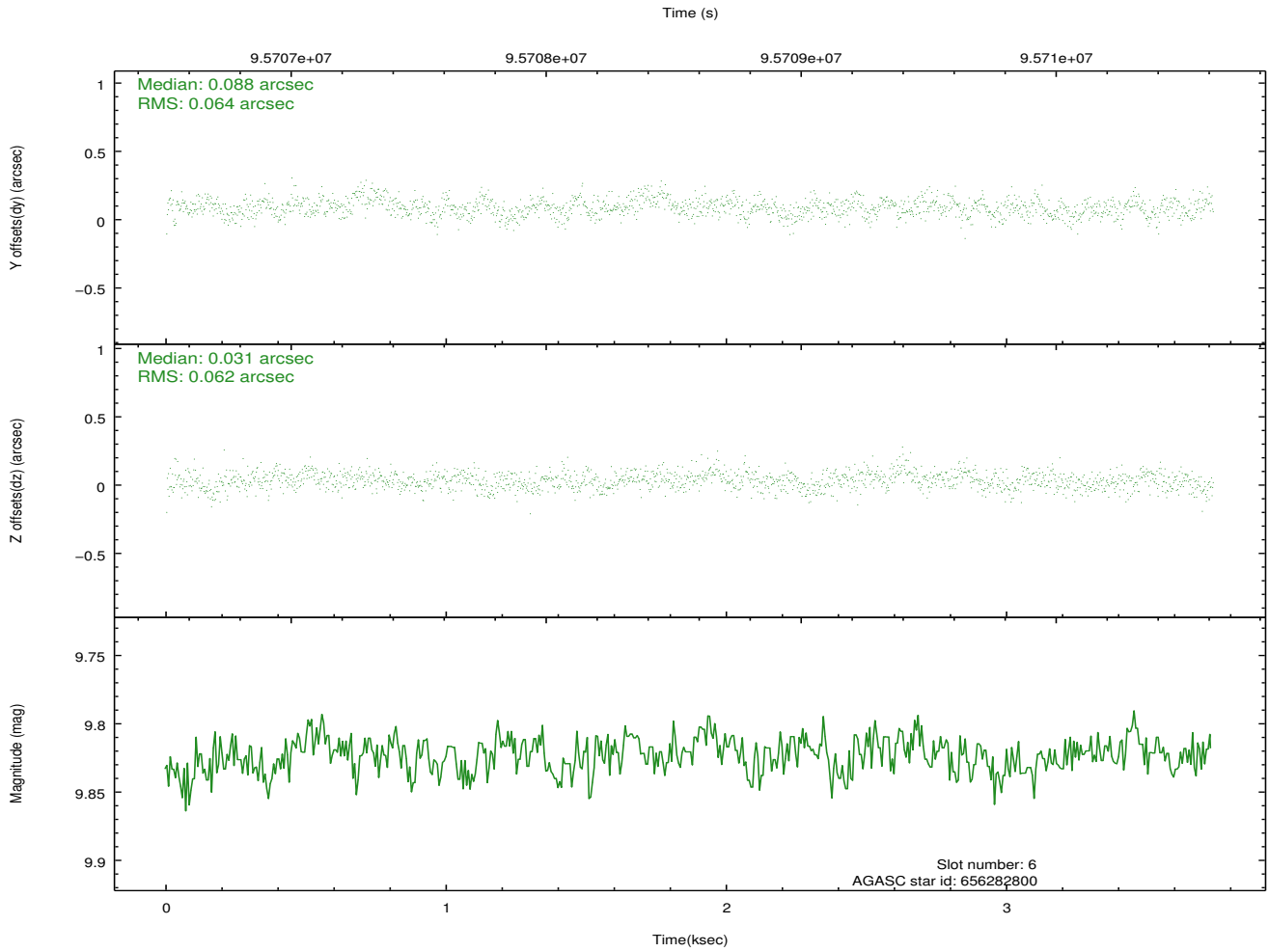
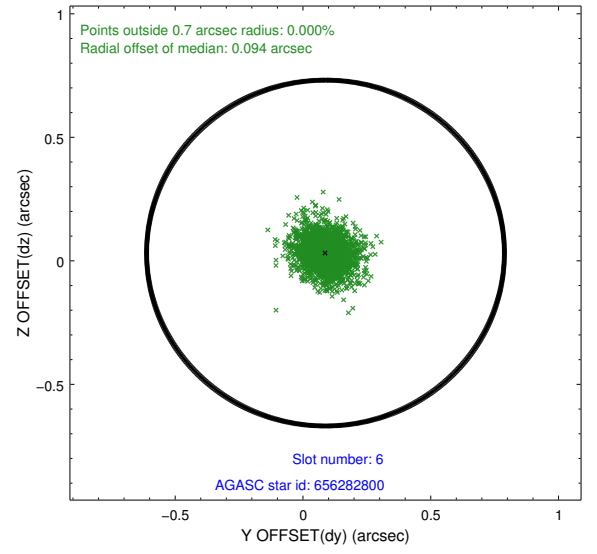
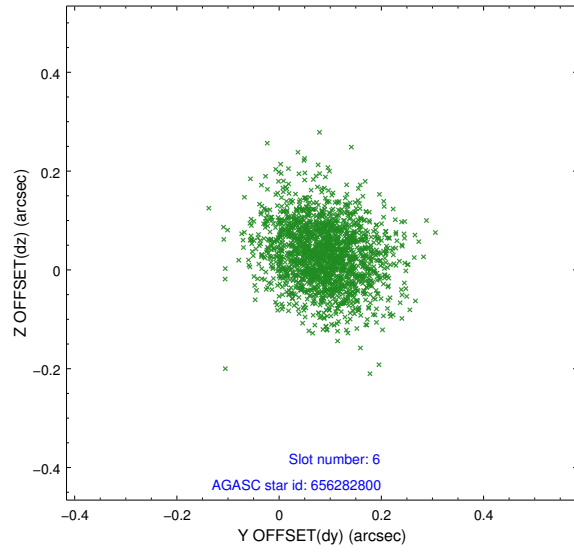
2.4.2 Slot 4



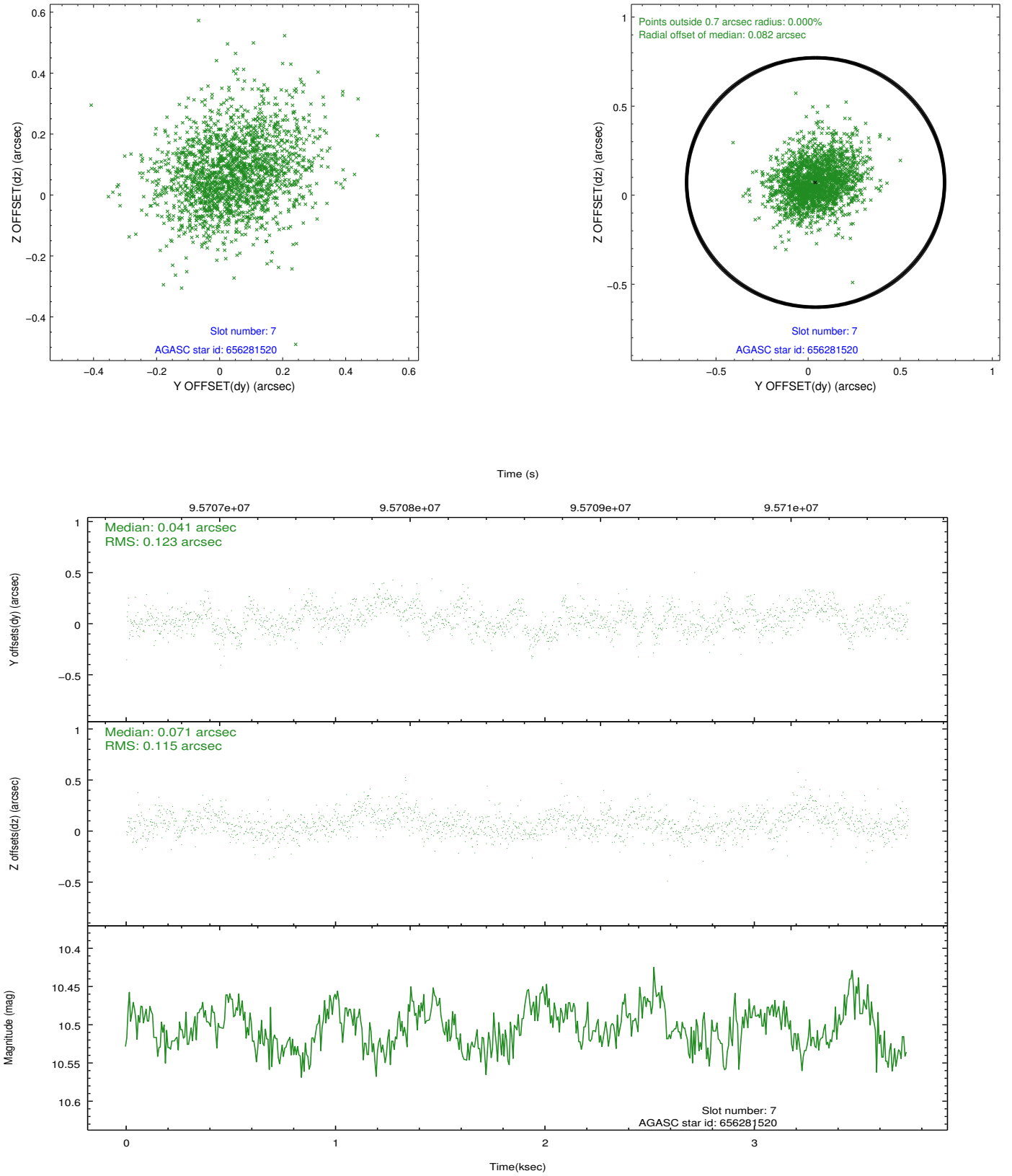
2.4.3 Slot 5



2.4.4 Slot 6

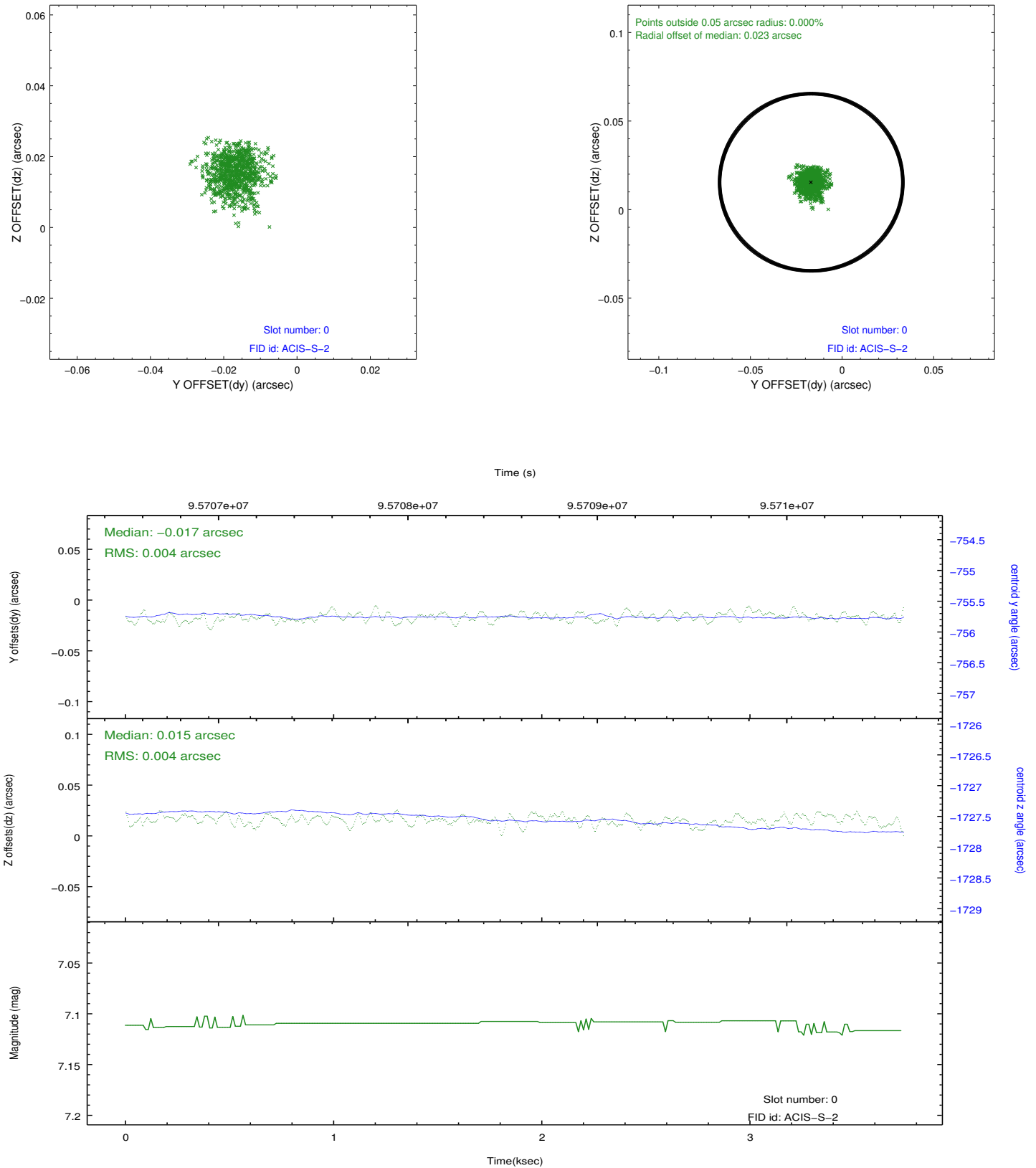


2.4.5 Slot 7

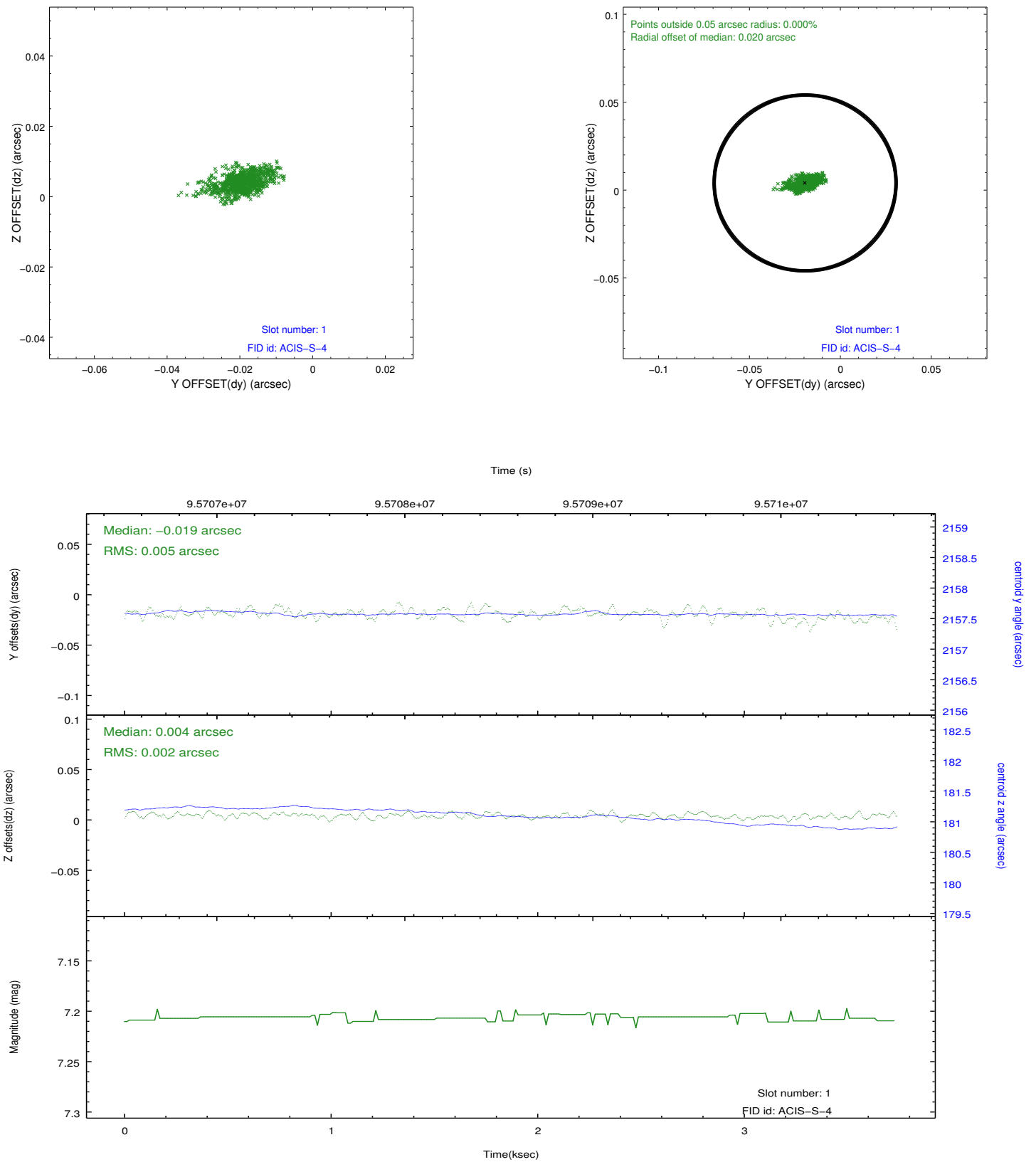


2.5 FID Slots

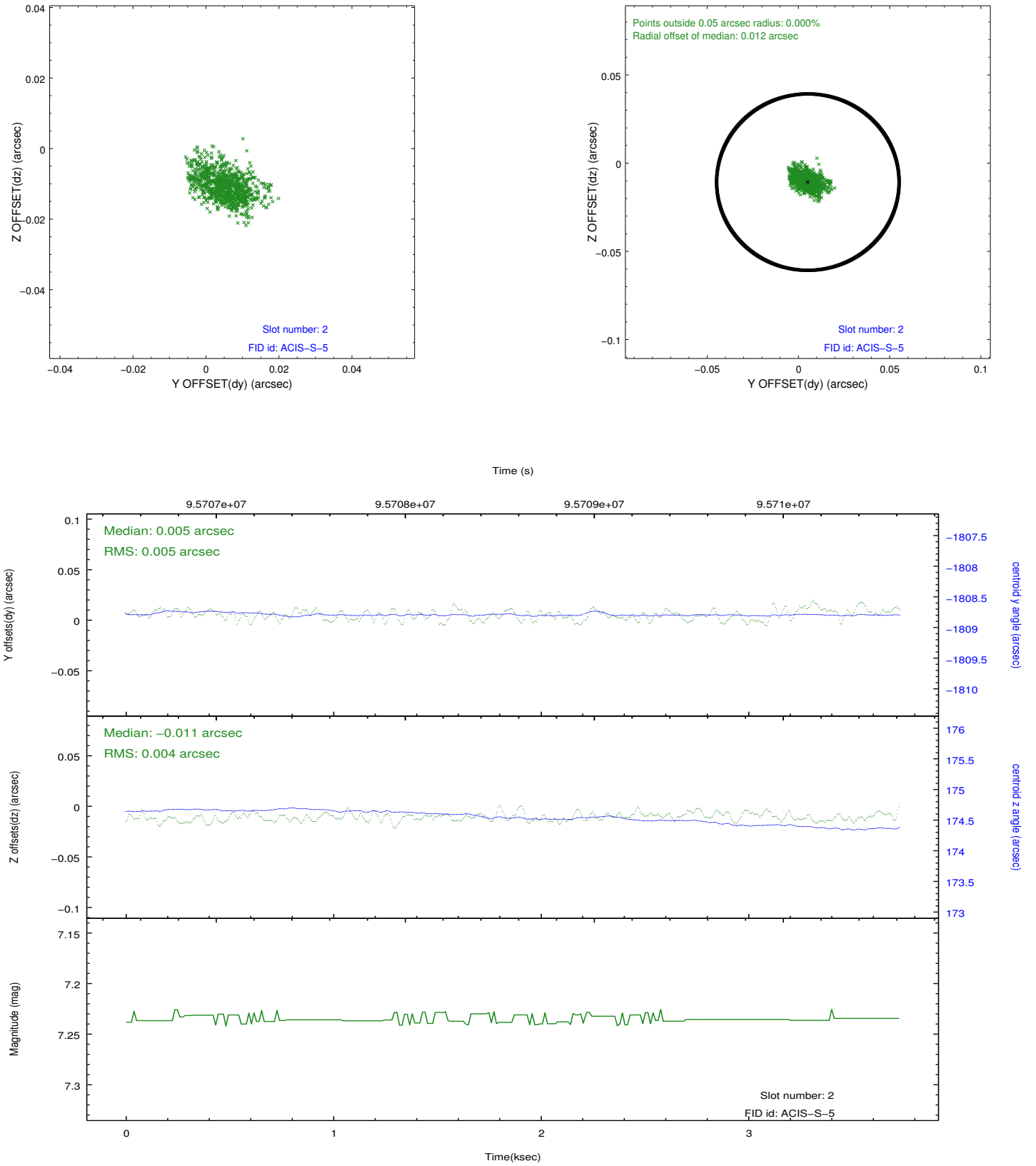
2.5.1 Slot 0



2.5.2 Slot 1



2.5.3 Slot 2



A Summary

A.1 Status

V&V Scientist	Jen Lauer
V&V Date (YYYY-MM-DD)	2012.09.14
V&V Edition	1
V&V Disposition and Status	OK
V&V Charge Time	3.353

A.2 Comments

Monitor constraint met. This is a moving target. Users will need to run sso_freeze or similar software to position the events in the reference frame of the target.