

V&V Reference Report

L2 ASCDS Version : 7.6.9

Observation 2391 - L2 Version 001
Chandra X-Ray Center

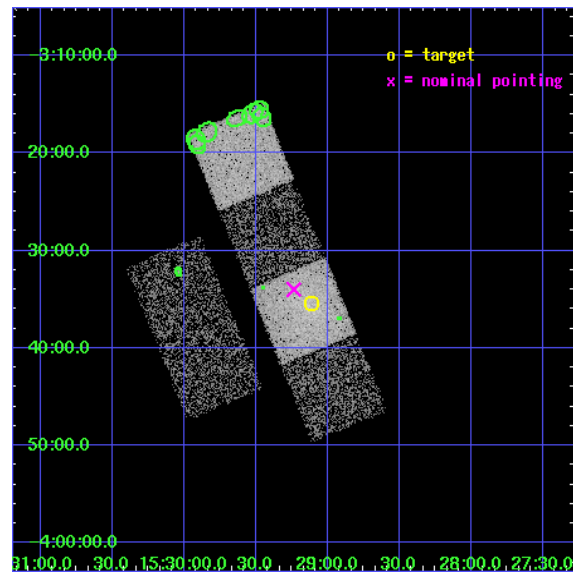
L2 Processing Date : Nov 2 2006

Contents

1	Front	2
2	OBI	3
2.1	OBI	3
2.1.1	Images	3
2.1.2	Bias	3
2.1.3	Parameters	4
2.1.4	Events	4
2.2	Compared Parameters	5
2.3	Aspect	6
2.4	Star Slots	9
2.4.1	Slot 3	9
2.4.2	Slot 4	10
2.4.3	Slot 5	11
2.4.4	Slot 6	12
2.4.5	Slot 7	13
2.5	FID Slots	14
2.5.1	Slot 0	14
2.5.2	Slot 1	15
2.5.3	Slot 2	16
3	Point Sources	17
A	Summary	18
A.1	Status	18
A.2	Comments	18

1 Front

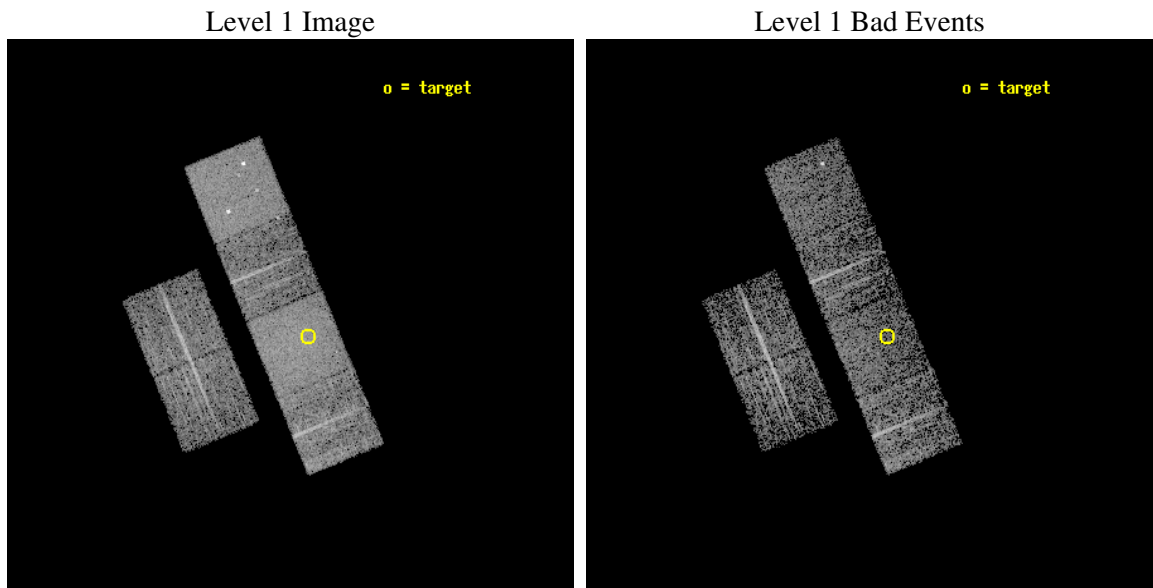
seq_num	100021
obs_id	2391
title	X-RAY SPECTROSCOPY OF COMET C/1999 T1
observer	Dr. Vladimir Krasnopolsky
object	C/1999 T1
dtcycle	0
cycle	P
ra_targ	232.27881
dec_targ	-3.59135
ra_nom	232.30889470152
dec_nom	-3.5666986225455
roll_nom	67.689907487714
revision	2
ontime	3350.4000031203
livetime	3307.9752209121
ontime2	3350.4000031203
ontime3	3350.4000031203
ontime5	3350.4000031203
ontime6	3350.4000031203
ontime7	3350.4000031203
ontime8	3350.4000031203
l2events	44460



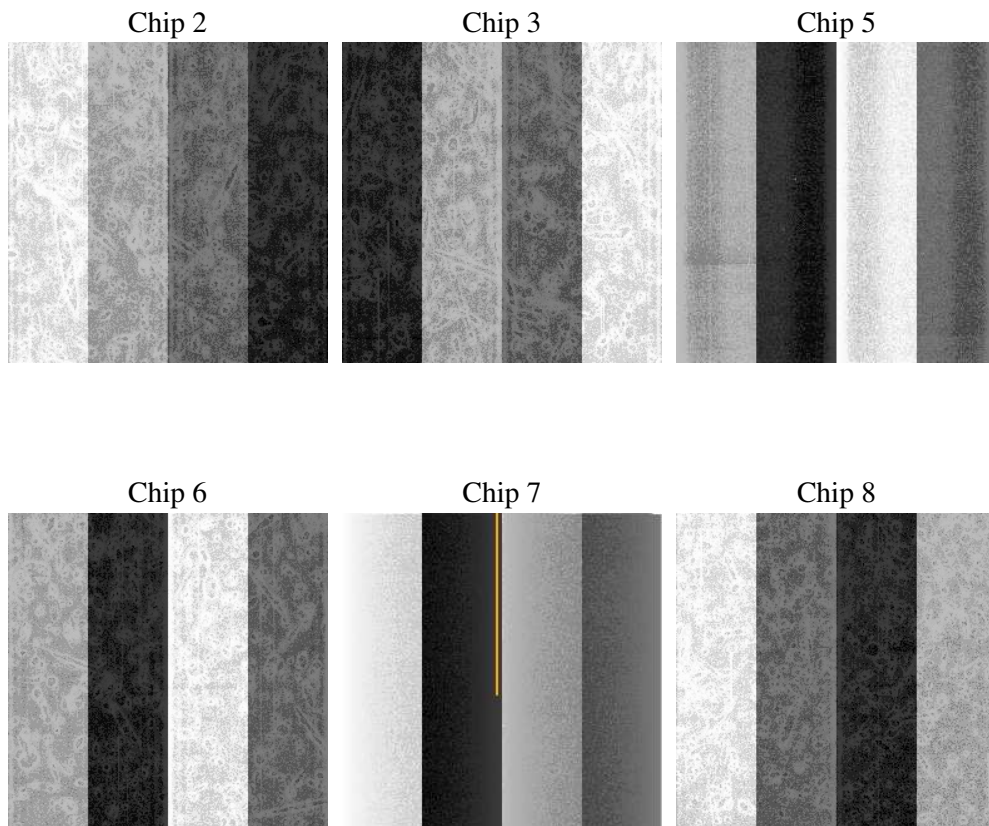
2 OBI

2.1 OBI

2.1.1 Images



2.1.2 Bias



2.1.3 Parameters

obi_num	0
ascdsver	7.6.9
caldbver	3.2.3
date	2006-11-02T18:38:49
revision	2

sched_exp_time	3400.000000
ontime	3357.6739690602
ontime2	3357.6739690602
ontime3	3357.6739690602
ontime5	3357.6739690602
ontime6	3357.6739690602
ontime7	3357.6739690602
ontime8	3357.6739690602
l1events	159170

2.1.4 Events

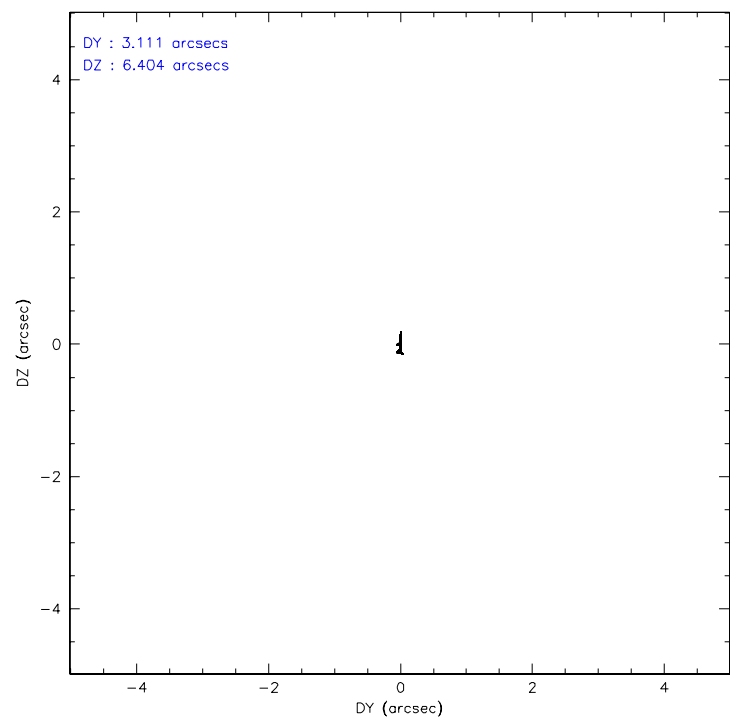
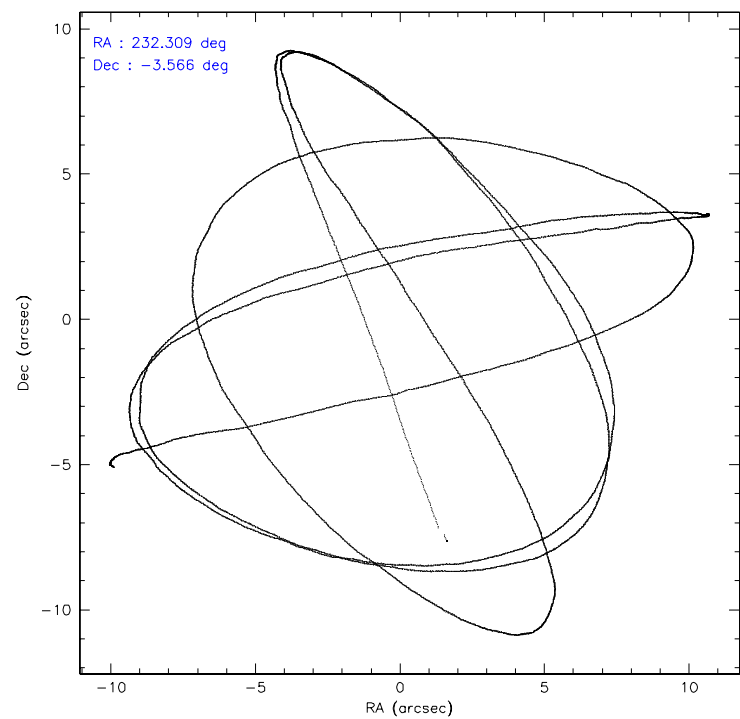
	ccd 2	ccd 3	ccd 5	ccd 6	ccd 7	ccd 8
level 1 events	21115	20295	34942	20849	34476	27493
rejected events	18396	17694	16639	17772	16260	21434
rejected %	87%	87%	47%	85%	47%	77%

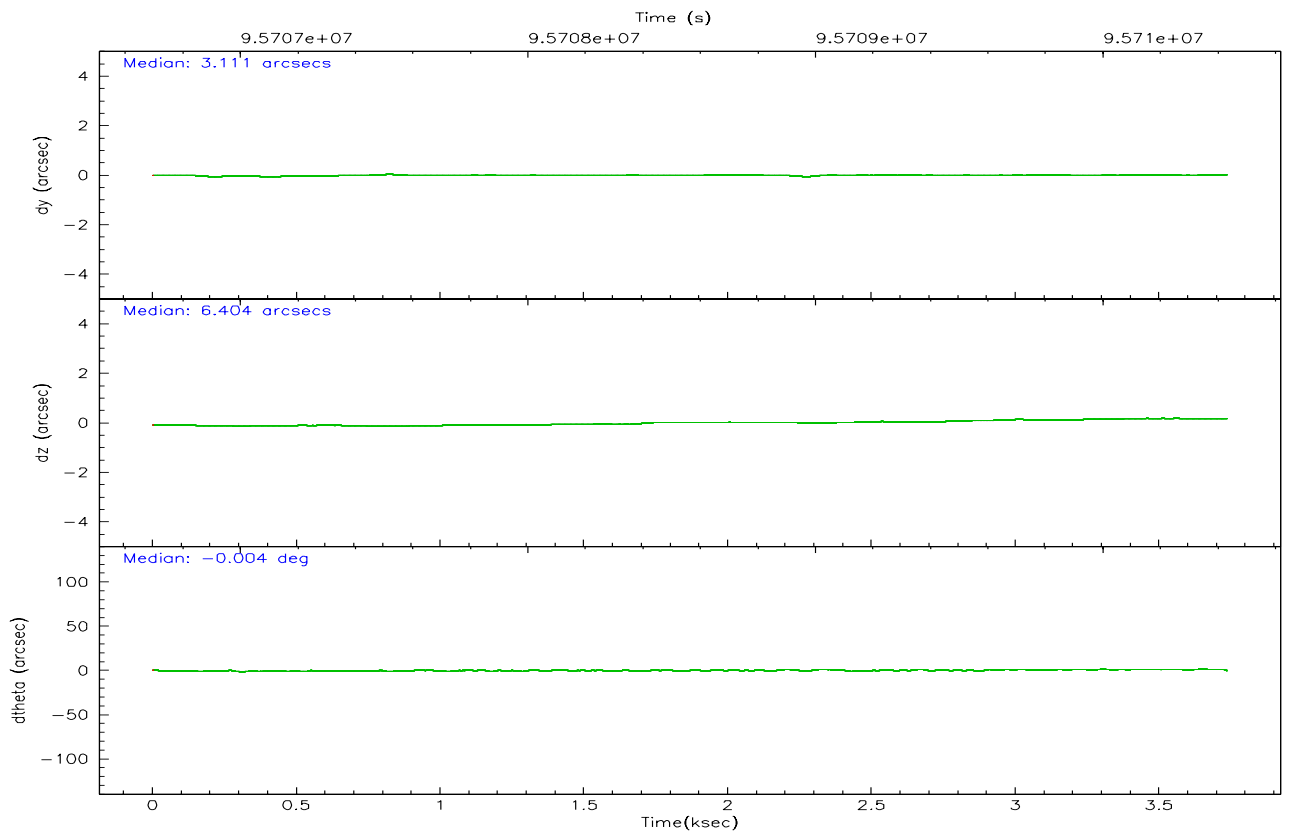
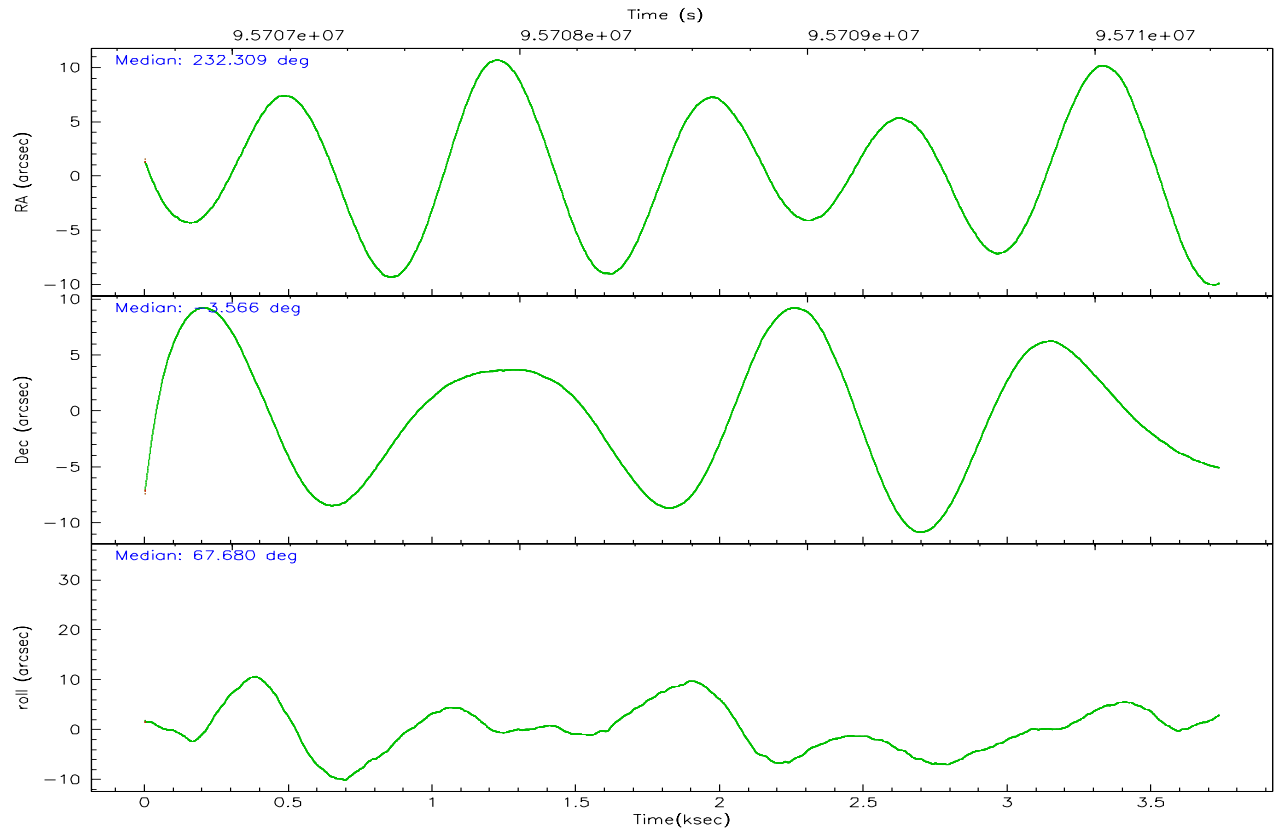
	ccd 2	ccd 3	ccd 5	ccd 6	ccd 7	ccd 8
grade 0 events	1366	1270	2689	1567	3030	2179
	6%	6%	7%	7%	8%	7%
grade 1 events	10	19	26	9	11	15
	0%	0%	0%	0%	0%	0%
grade 2 events	492	481	5665	513	4342	1270
	2%	2%	16%	2%	12%	4%
grade 3 events	221	244	530	244	1166	572
	1%	1%	1%	1%	3%	2%
grade 4 events	237	207	505	255	1208	564
	1%	1%	1%	1%	3%	2%
grade 5 events	691	780	1425	832	1876	1088
	3%	3%	4%	3%	5%	3%
grade 6 events	405	404	8944	503	8502	1480
	1%	1%	25%	2%	24%	5%
grade 7 events	17693	16890	15158	16926	14341	20325
	83%	83%	43%	81%	41%	73%

2.2 Compared Parameters

Parameter	Planned	Actual	Parameter	Planned	Actual
Instrument	ACIS	ACIS	Obspar format version number	6	6
Detector	ACIS-235678	ACIS-235678	Obspar file type	PREDICTED	ACTUAL
Grating	NONE	NONE	Obspar update status	NONE	UPDATED
Data mode	FAINT	FAINT	Number of optional ACIS chips dropped	0	0
Observation mode	POINTING	POINTING	On-chip summing requested	N	N
Pointing RA	232.312838	232.3088947015174	Subarray requested	NONE	NONE
Pointing Dec	-3.593849	-3.566698622545542	Alternating exposures requested	N	N
Pointing Roll	67.533548	67.68990748771432	Primary exposure time	0.000000	3.2
SIM focus pos (mm)	-0.684267	-0.6828225247311905			
SIM defocus (mm)	0	0.001444936568705701			
SIM translation stage pos (mm)	-190.132523	-190.1400660498719			
SIM translation stage offset (mm)	0	0.00754346686406393			
Observation start time	95707034.184000	95706003.502561			
Observation start date	2001-01-12T17:16:10	2001-01-12T17:00:03			
Observation end time	95710434.184000	95711526.71527299			
Observation end date	2001-01-12T18:12:50	2001-01-12T18:32:06			
Read mode	TIMED	TIMED			

2.3 Aspect



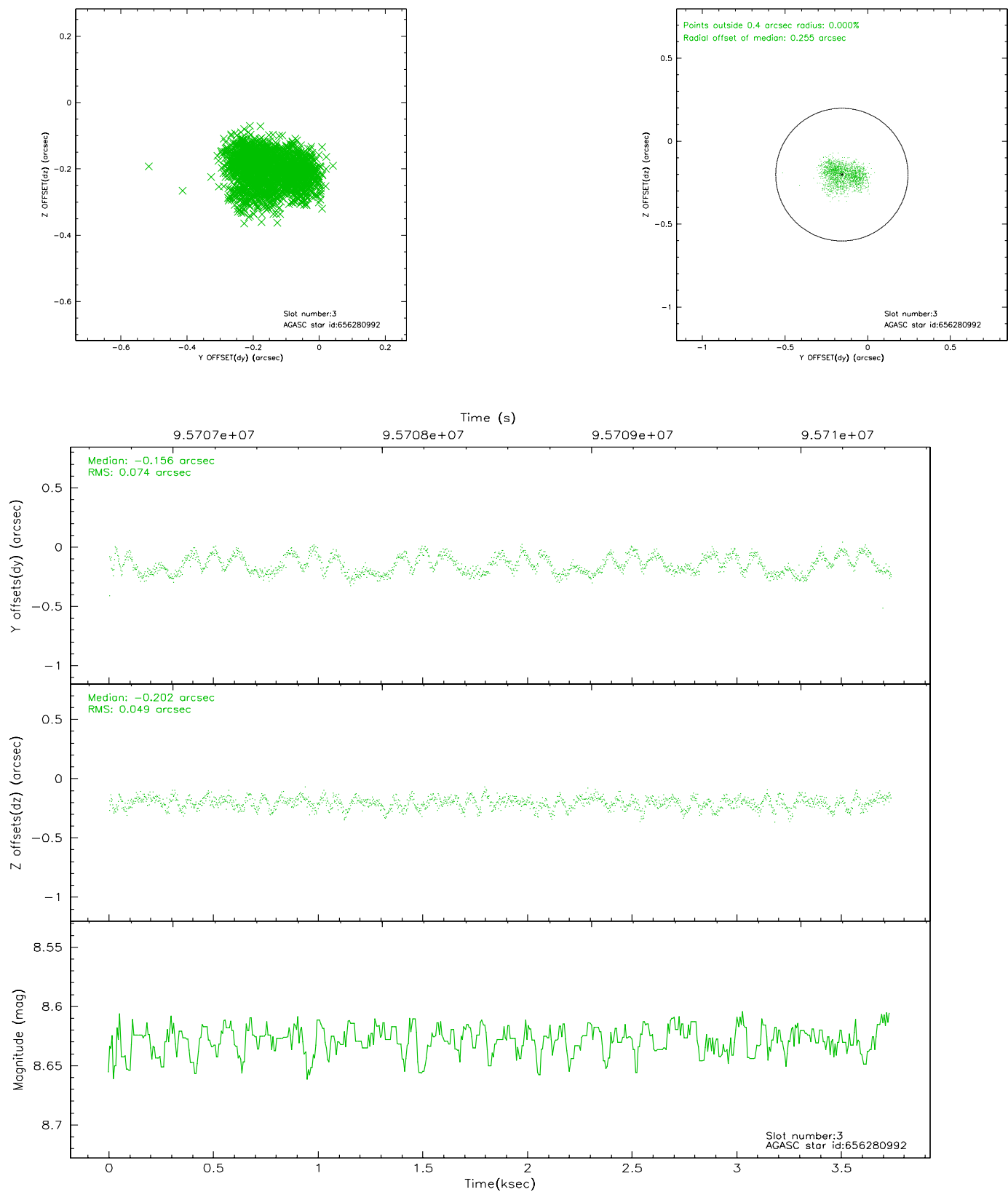


Slot Statistics

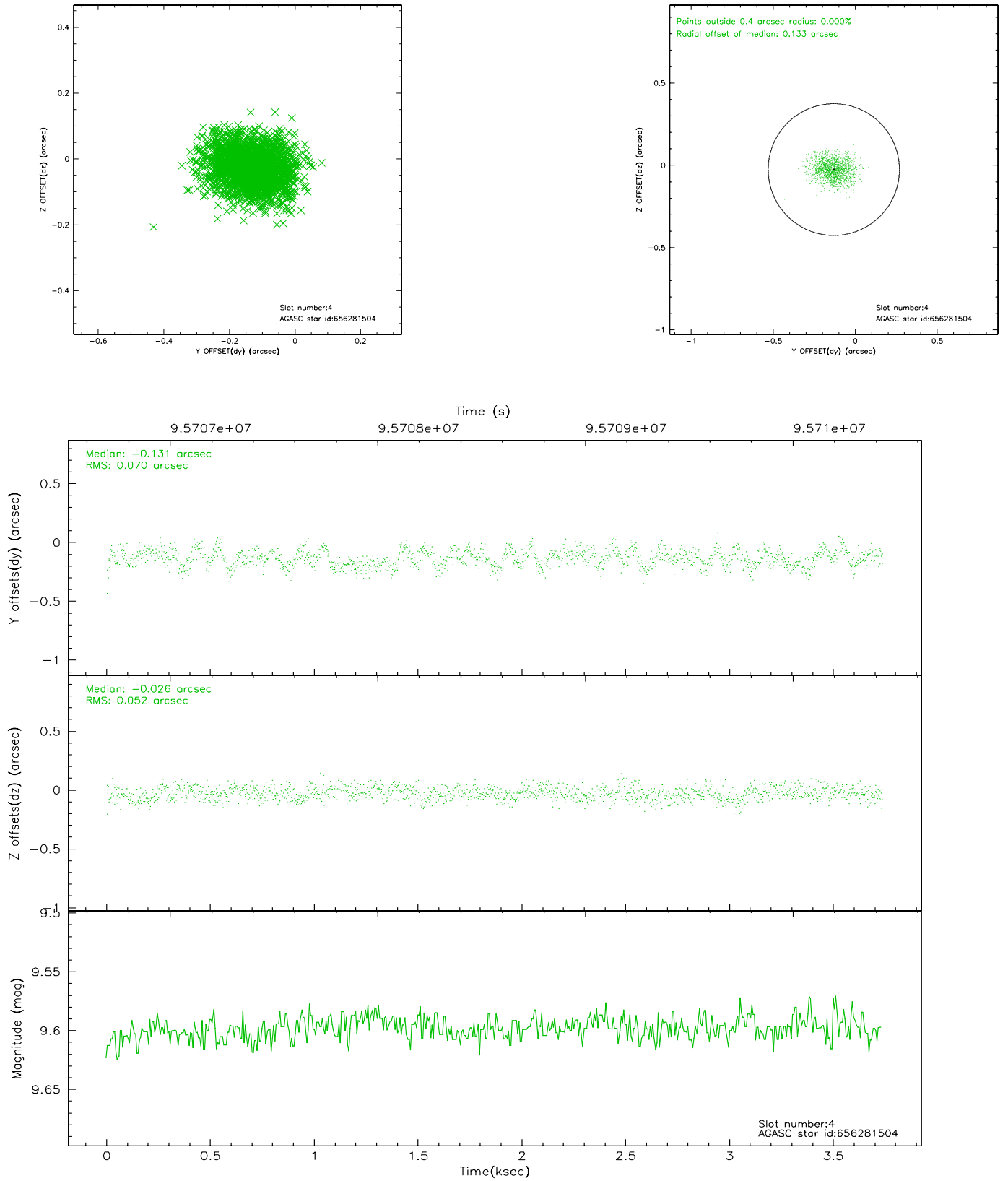
slot	status	id	mag	n_pts	med_dy	med_dz	dr1	dr2	ra	dec	mean_y	mean_z
0	FID	ACIS-S-2	7.11	912	-0.006	0.039	0.006	0.010	0.000000	0.000000	-755.74	-1727.52
1	FID	ACIS-S-4	7.21	911	-0.062	-0.008	0.005	0.009	0.000000	0.000000	2156.70	179.21
2	FID	ACIS-S-5	7.24	910	0.036	-0.022	0.006	0.010	0.000000	0.000000	-1806.39	174.75
3	GUIDE	656280992	8.63	1821	-0.156	-0.202	0.098	0.143	231.834406	-3.038806	1187.26	2352.75
4	GUIDE	656281504	9.60	1821	-0.131	-0.026	0.094	0.152	232.078288	-3.158892	1123.95	1378.86
5	GUIDE	656806488	9.69	1820	0.154	0.129	0.119	0.183	232.003950	-3.770925	-1013.74	782.33
6	GUIDE	656282800	9.82	1822	0.088	0.031	0.094	0.157	232.090203	-3.511604	-33.94	852.79
7	GUIDE	656281520	10.50	1818	0.041	0.071	0.174	0.294	231.927658	-2.755166	2259.18	2434.63

2.4 Star Slots

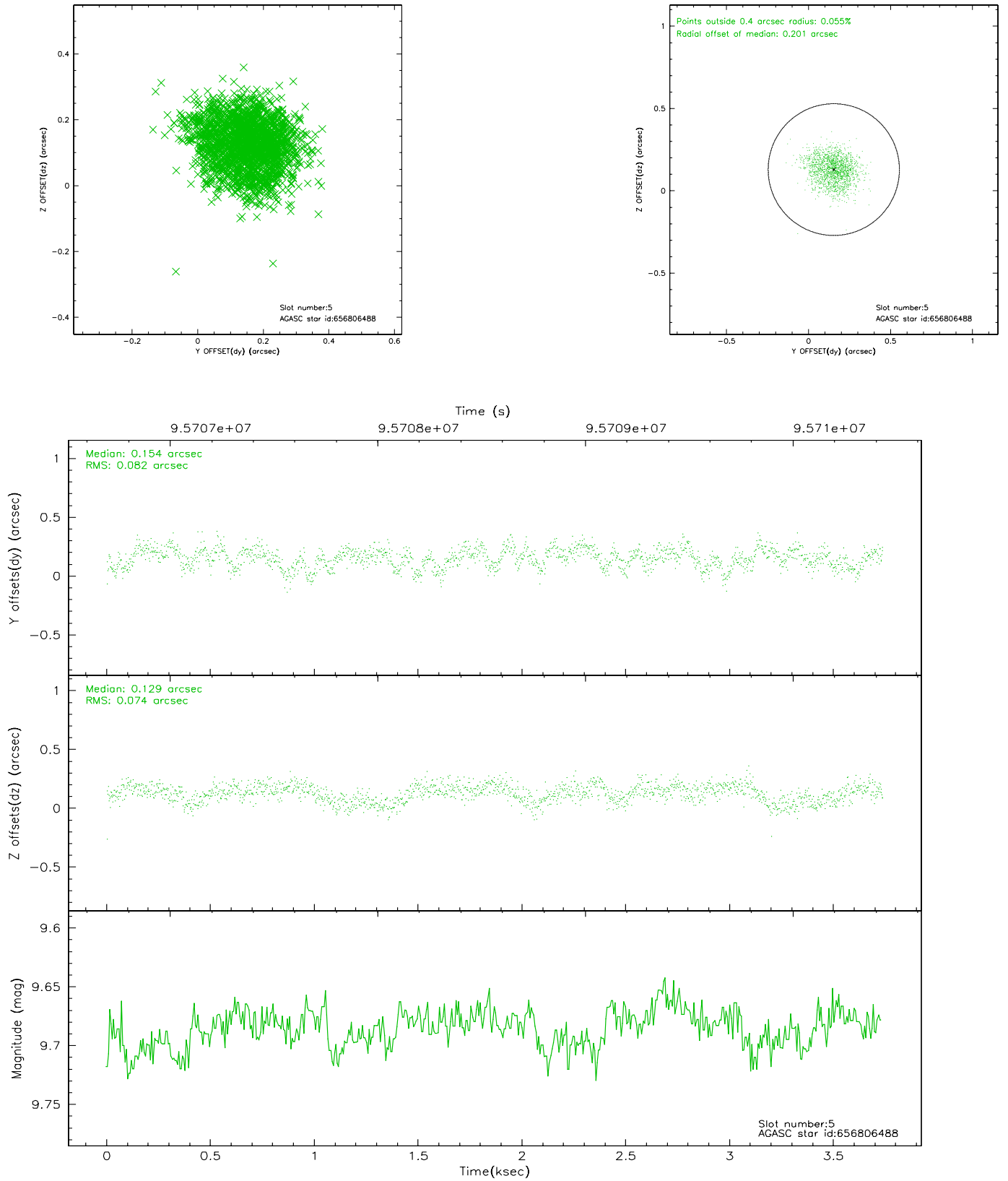
2.4.1 Slot 3



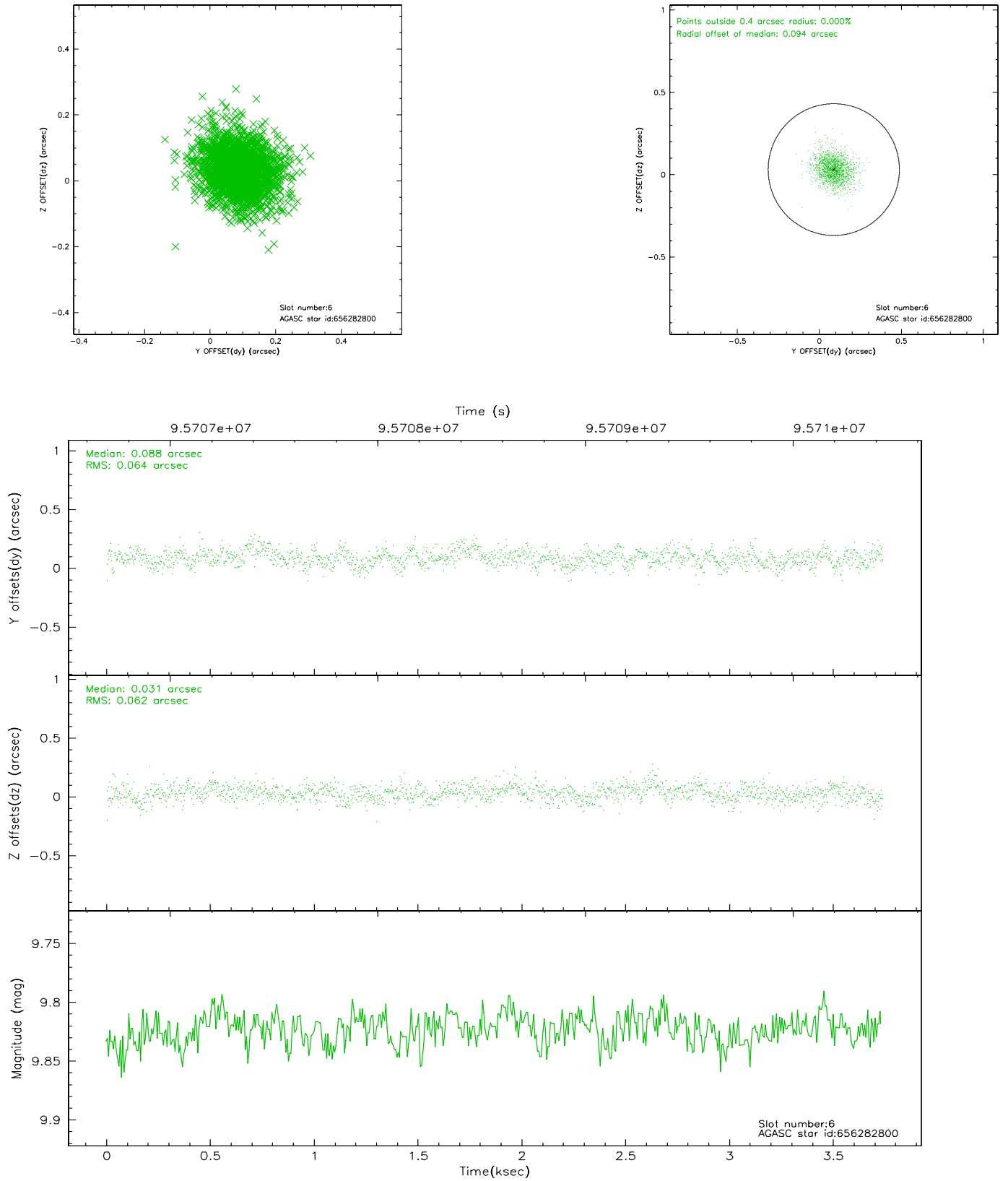
2.4.2 Slot 4



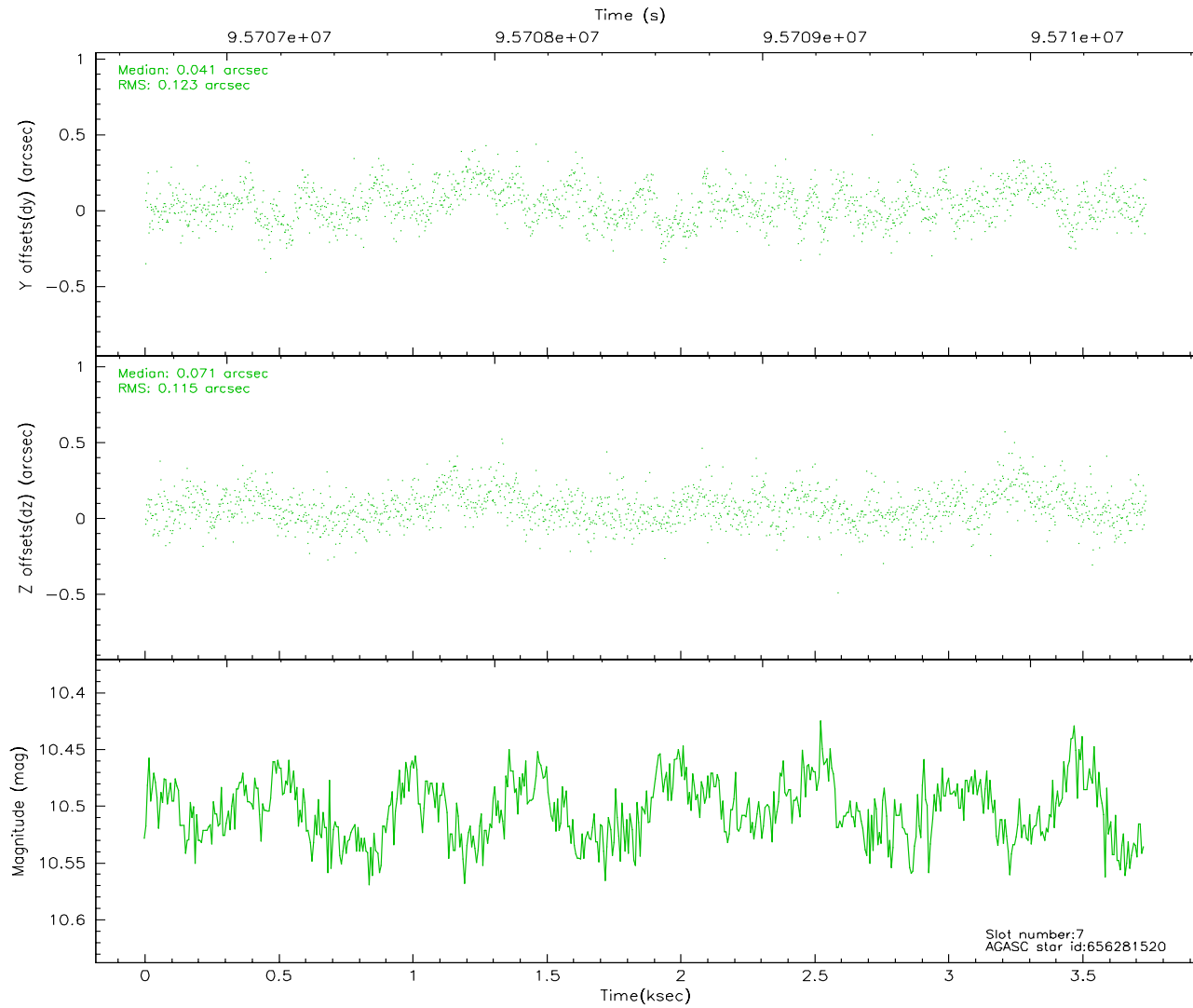
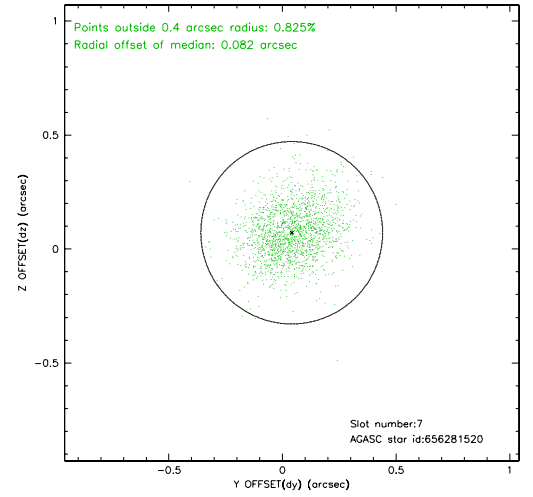
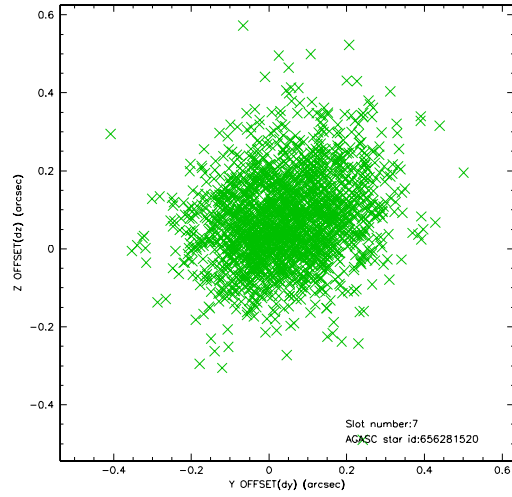
2.4.3 Slot 5



2.4.4 Slot 6

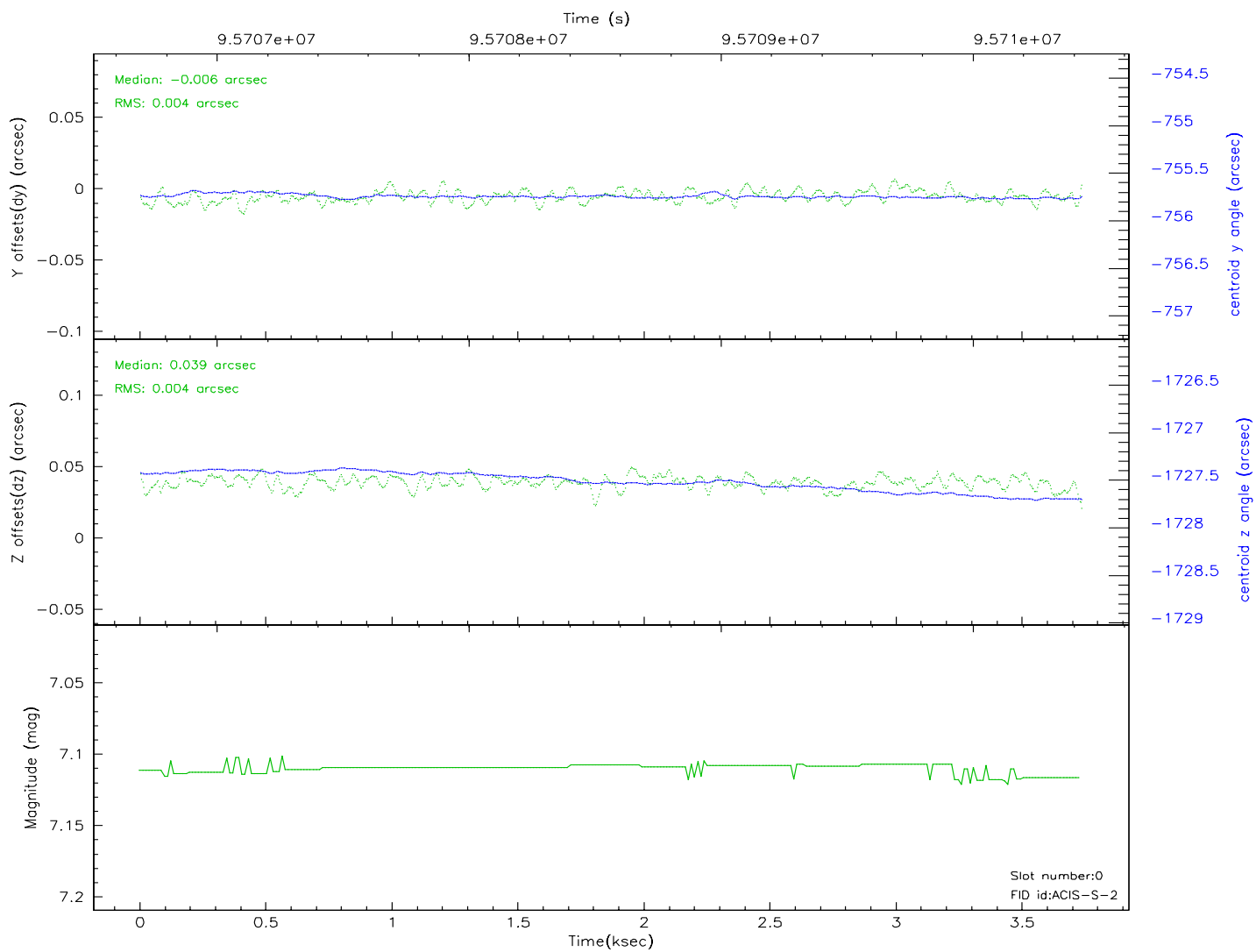
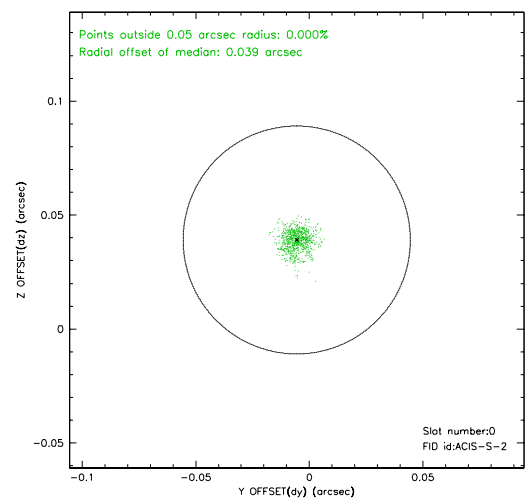
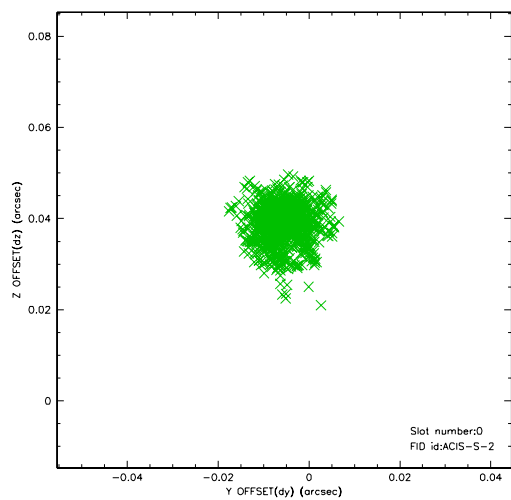


2.4.5 Slot 7

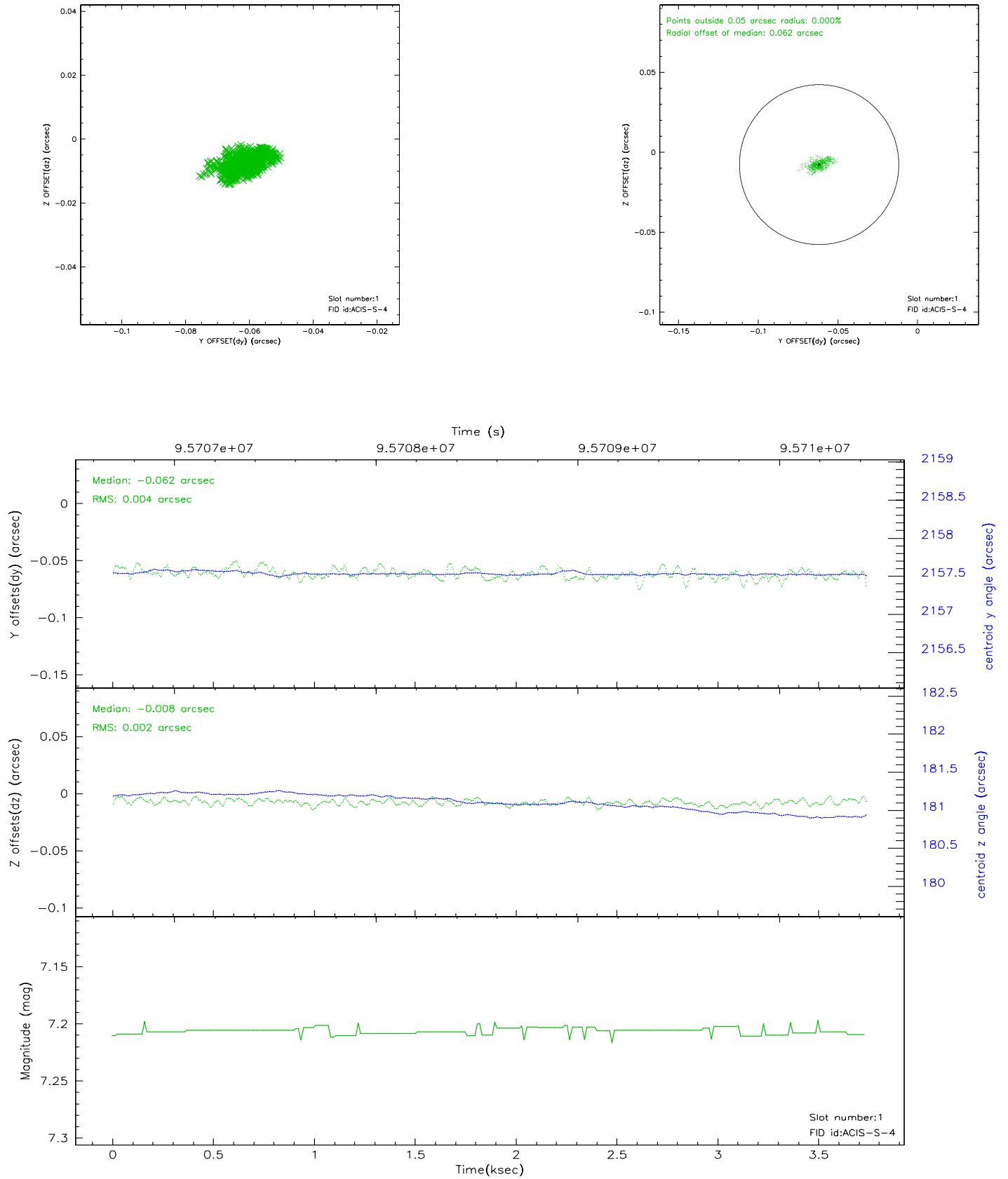


2.5 FID Slots

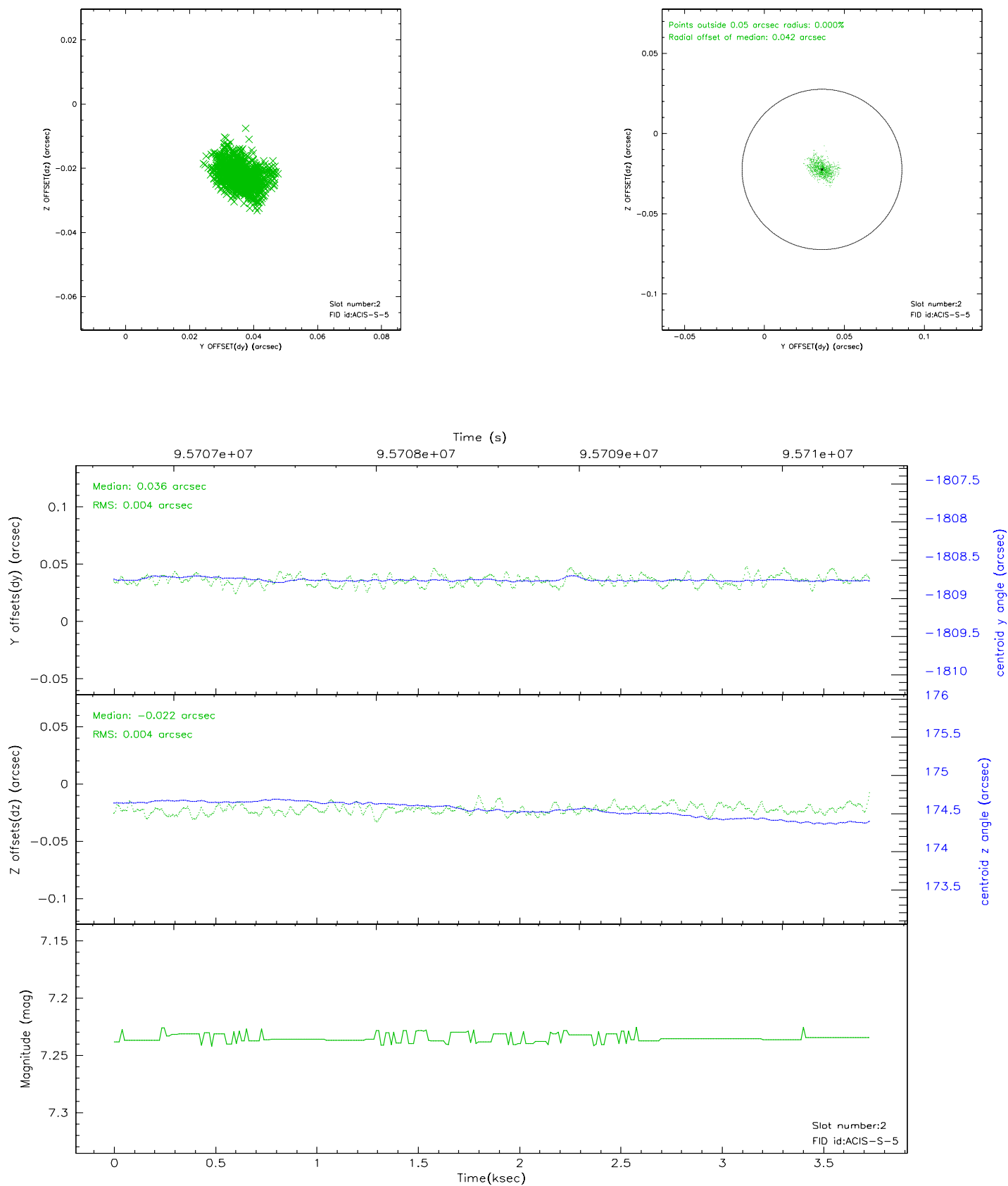
2.5.1 Slot 0



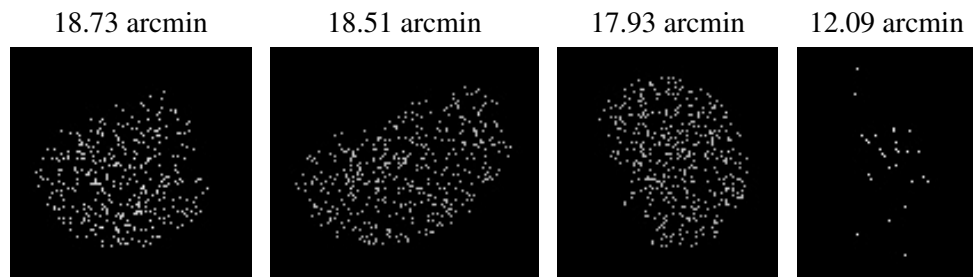
2.5.2 Slot 1



2.5.3 Slot 2



3 Point Sources



A Summary

A.1 Status

V&V Scientist	Jen Lauer
V&V Date (YYYY-MM-DD)	2006.11.02
V&V Edition	1
V&V Disposition and Status	OK
V&V Charge Time	3.353

A.2 Comments

Monitor constraint met.