

# V&V Reference Report

## L2 ASCDS Version : 7.6.9

Observation 2281 - L2 Version 001  
Chandra X-Ray Center

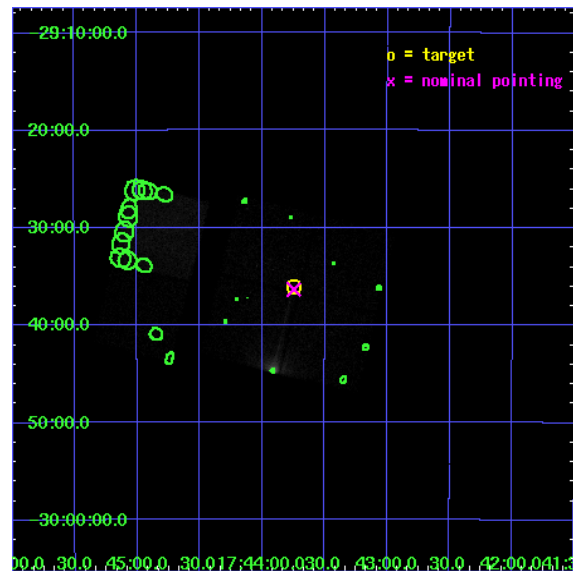
L2 Processing Date : Dec 14 2006

## Contents

<b>1</b>	<b>Front</b>	<b>2</b>
<b>2</b>	<b>OBI</b>	<b>3</b>
2.1	OBI . . . . .	3
2.1.1	Images . . . . .	3
2.1.2	Bias . . . . .	3
2.1.3	Parameters . . . . .	4
2.1.4	Events . . . . .	4
2.2	Compared Parameters . . . . .	5
2.3	Aspect . . . . .	6
2.4	Star Slots . . . . .	9
2.4.1	Slot 3 . . . . .	9
2.4.2	Slot 4 . . . . .	10
2.4.3	Slot 5 . . . . .	11
2.4.4	Slot 6 . . . . .	12
2.4.5	Slot 7 . . . . .	13
2.5	FID Slots . . . . .	14
2.5.1	Slot 0 . . . . .	14
2.5.2	Slot 1 . . . . .	15
2.5.3	Slot 2 . . . . .	16
<b>3</b>	<b>Point Sources</b>	<b>17</b>
<b>A</b>	<b>Summary</b>	<b>18</b>
A.1	Status . . . . .	18
A.2	Comments . . . . .	18

# 1 Front

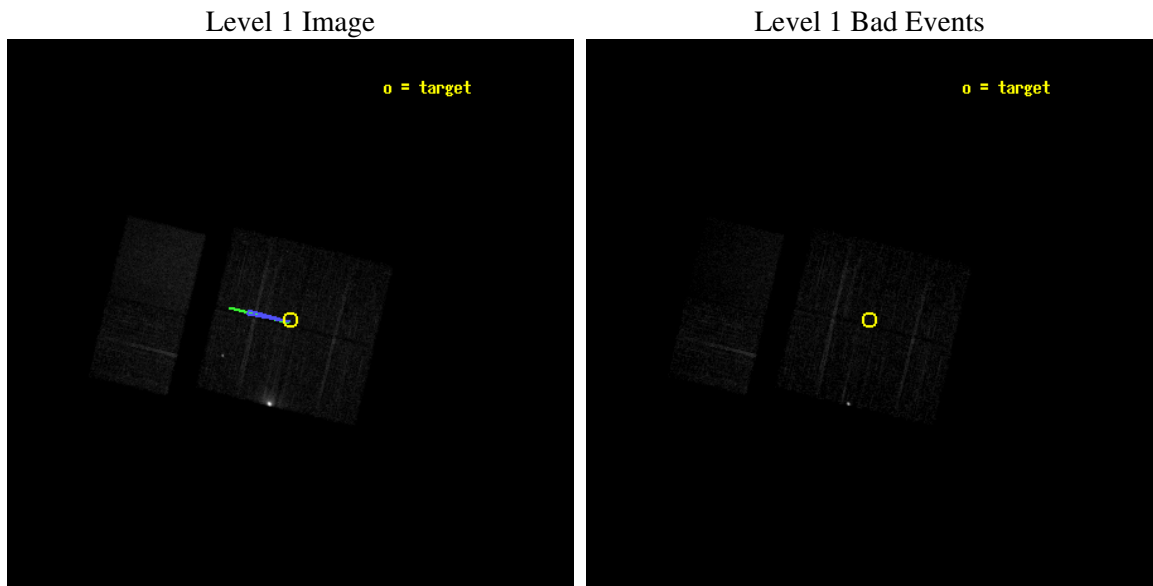
seq_num	900108
obs_id	2281
title	CHANDRA SURVEY OF THE GALACTIC RIDGE AROUND THE MILKY WAY CENTER
observer	Prof. Q. Daniel Wang
object	GCS 26
dtcycle	0
cycle	P
ra_targ	265.9376
dec_targ	-29.6011
ra_nom	265.93675434189
dec_nom	-29.605785356613
roll_nom	283.80727472314
revision	2
ontime	11760.000010952
livetime	11611.087809792
ontime0	11760.000010952
ontime1	11760.000010952
ontime2	11760.000010952
ontime3	11760.000010952
ontime6	11760.000010952
ontime7	11760.000010952
l2events	90778



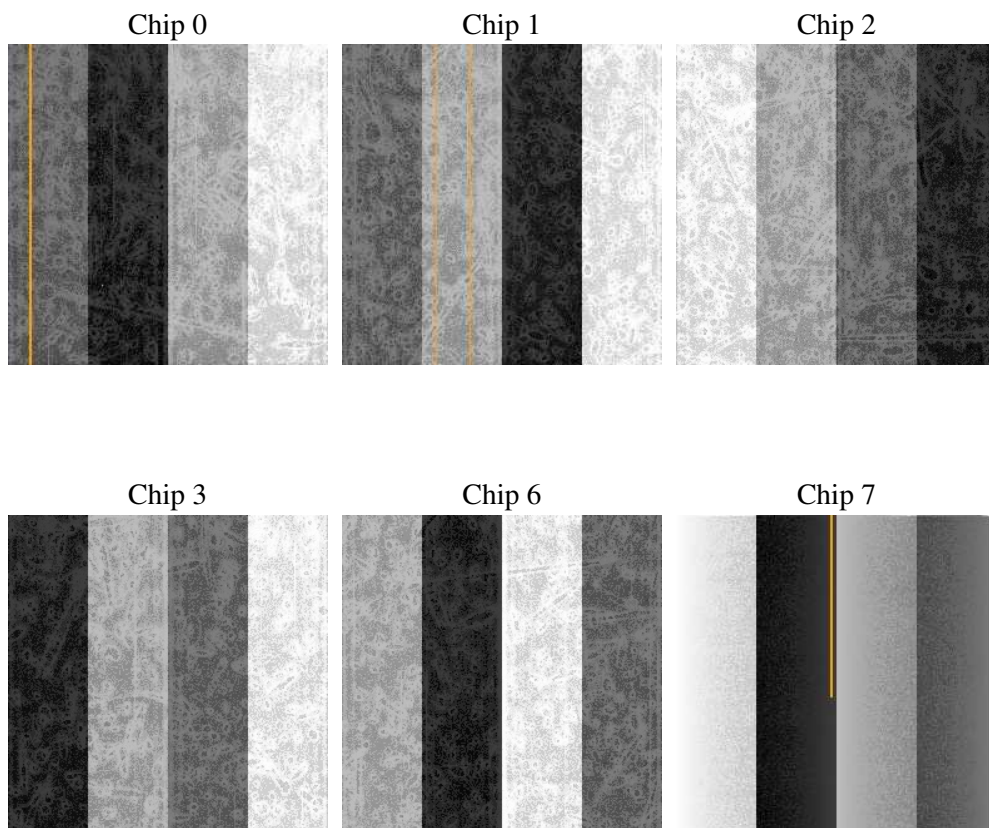
## 2 OBI

### 2.1 OBI

#### 2.1.1 Images



#### 2.1.2 Bias



### 2.1.3 Parameters

obi_num	0
ascdsver	7.6.9
caldbver	3.2.4
date	2006-12-14T14:58:49
revision	2

sched_exp_time	12000.000000
ontime	11764.854920477
ontime0	11764.854920477
ontime1	11764.854900569
ontime2	11764.854920477
ontime3	11764.854920477
ontime6	11764.854920477
ontime7	11764.854900569
l1events	243609

### 2.1.4 Events

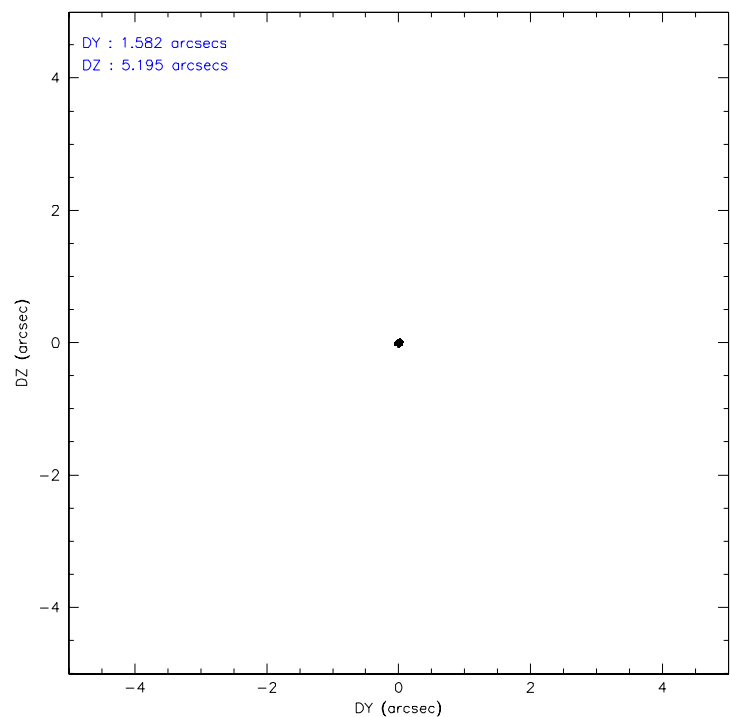
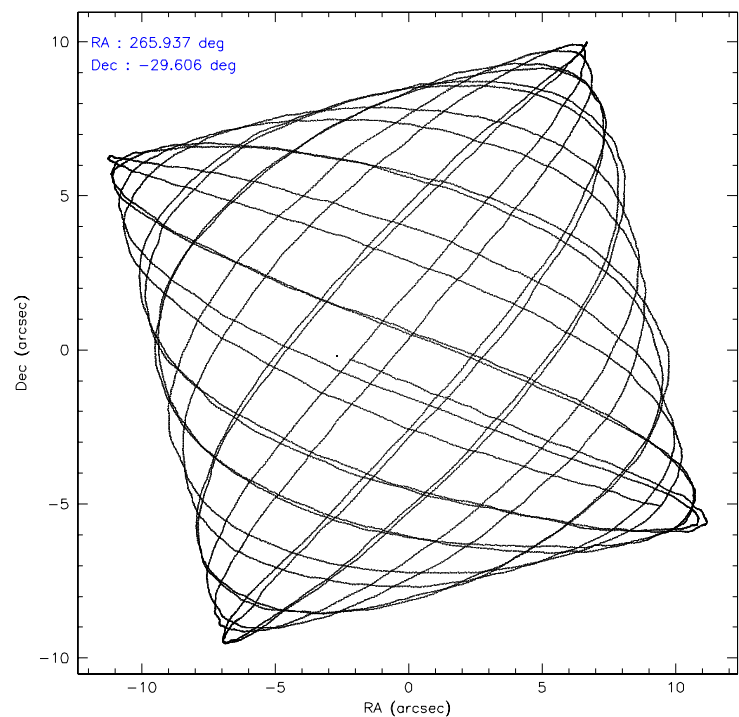
	ccd 0	ccd 1	ccd 2	ccd 3	ccd 6	ccd 7
level 1 events	33046	29249	74953	33254	32848	40259
rejected events	23408	22843	29810	26094	27047	19498
rejected %	70%	78%	39%	78%	82%	48%

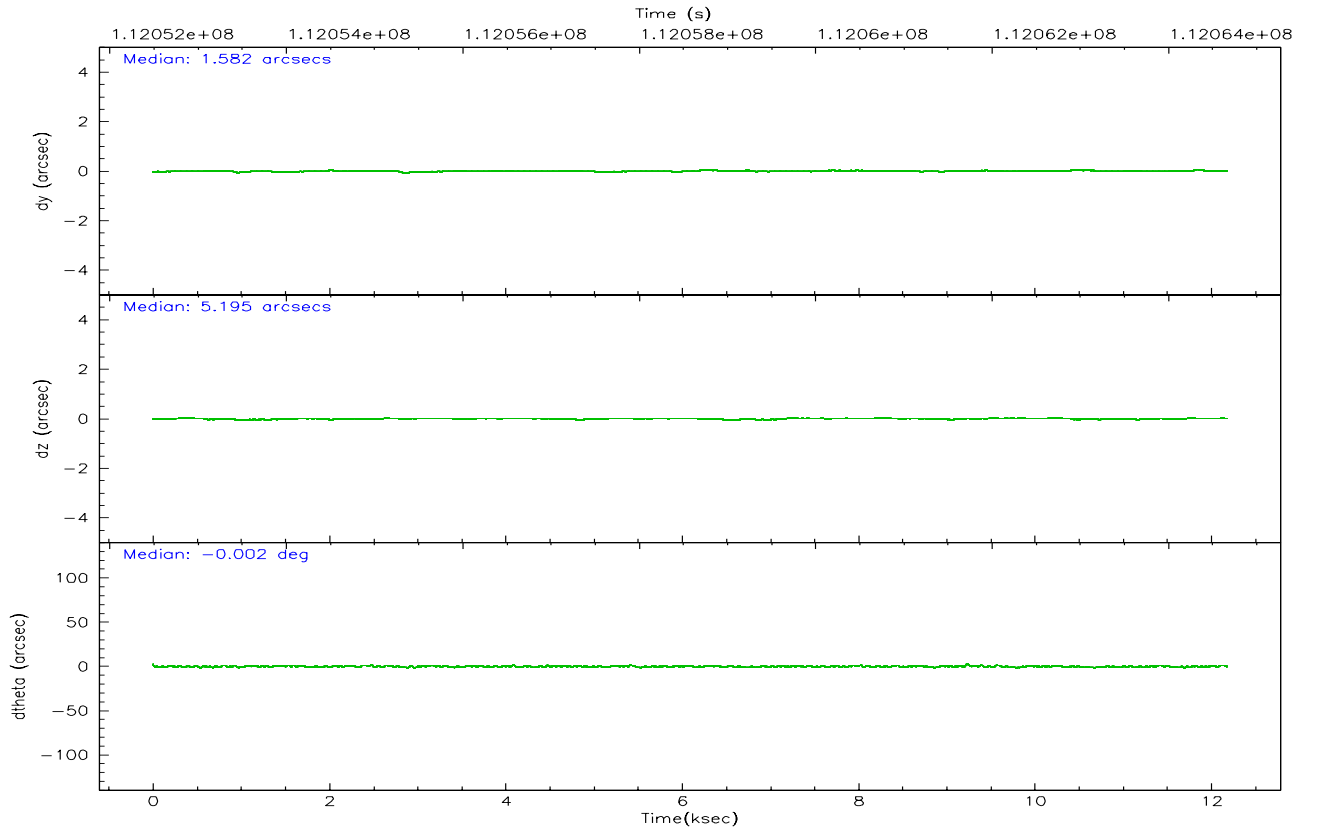
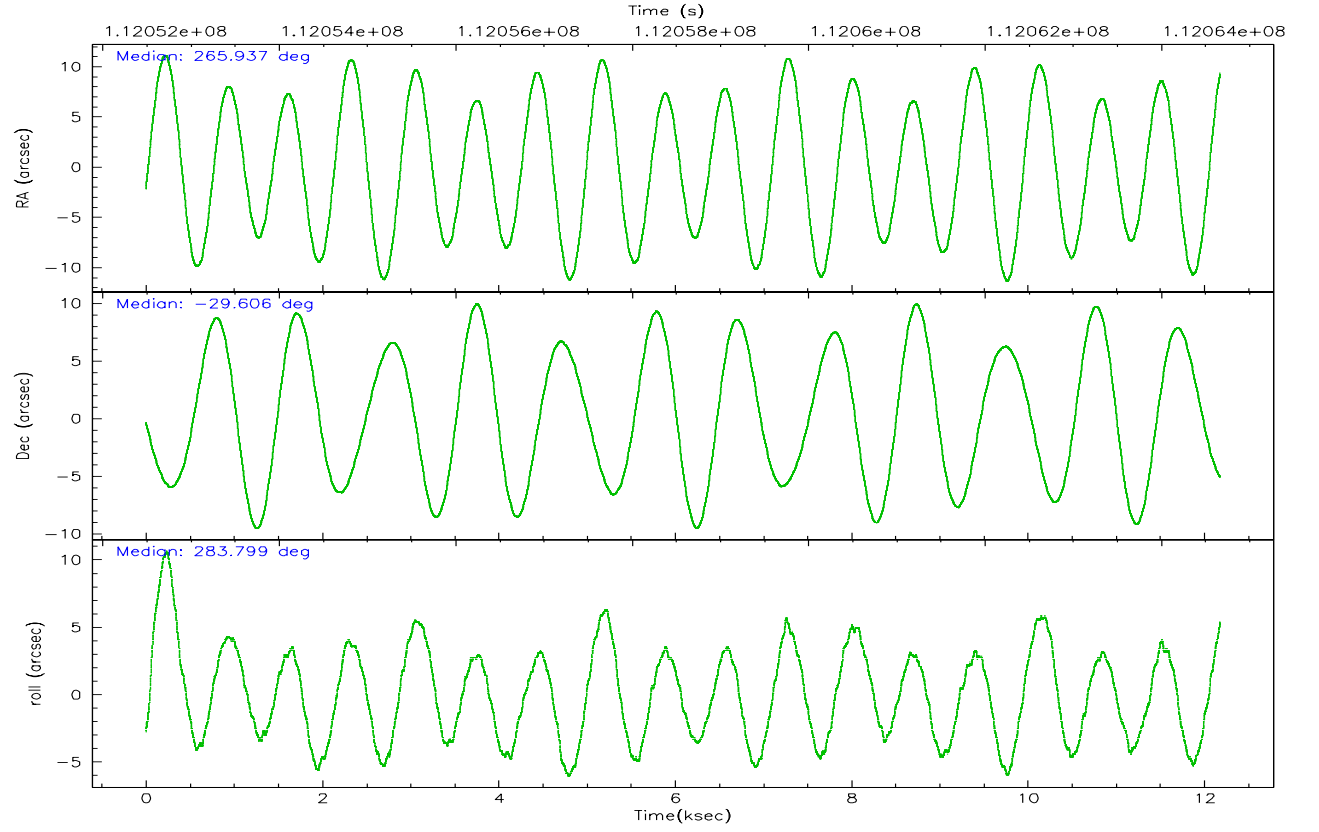
	ccd 0	ccd 1	ccd 2	ccd 3	ccd 6	ccd 7
grade 0 events	5602	3078	26292	3636	2612	1483
	16%	10%	35%	10%	7%	3%
grade 1 events	46	34	1113	33	17	22
	0%	0%	1%	0%	0%	0%
grade 2 events	1655	1278	7527	1330	1158	5463
	5%	4%	10%	3%	3%	13%
grade 3 events	651	505	2818	561	498	1208
	1%	1%	3%	1%	1%	3%
grade 4 events	601	531	2789	527	472	1196
	1%	1%	3%	1%	1%	2%
grade 5 events	1182	1338	2018	1361	1505	3438
	3%	4%	2%	4%	4%	8%
grade 6 events	1134	1018	5753	1115	1065	11419
	3%	3%	7%	3%	3%	28%
grade 7 events	22175	21467	26643	24691	25521	16030
	67%	73%	35%	74%	77%	39%

## 2.2 Compared Parameters

Parameter	Planned	Actual	Parameter	Planned	Actual
Instrument	ACIS	ACIS	Obspar format version number	6	6
Detector	ACIS-012367	ACIS-012367	Obspar file type	PREDICTED	ACTUAL
Grating	NONE	NONE	Obspar update status	NONE	UPDATED
Data mode	FAINT	FAINT	Number of optional ACIS chips dropped	0	0
Observation mode	POINTING	POINTING	On-chip summing requested	N	N
Pointing RA	265.914855	265.9367543418946	Subarray requested	NONE	NONE
Pointing Dec	-29.585990	-29.60578535661327	Alternating exposures requested	N	N
Pointing Roll	283.587766	283.8072747231377	Primary exposure time	0.000000	3.2
Roll angle	283.600000	283.600000			
Roll tolerance	2.000000	2.000000			
Roll constraint allows 180D rotation	N	N			
SIM focus pos (mm)	-0.782348	-0.7809083437167272			
SIM defocus (mm)	0	0.001439871863259334			
SIM translation stage pos (mm)	-233.592463	-233.5874344608287			
SIM translation stage offset (mm)	0	-0.005018542100998502			
Observation start time	112052666.184000	112052290.03641			
Observation start date	2001-07-20T21:43:22	2001-07-20T21:38:10			
Observation end time	112064666.184000	112064799.6494			
Observation end date	2001-07-21T01:03:22	2001-07-21T01:06:39			
Read mode	TIMED	TIMED			

## 2.3 Aspect





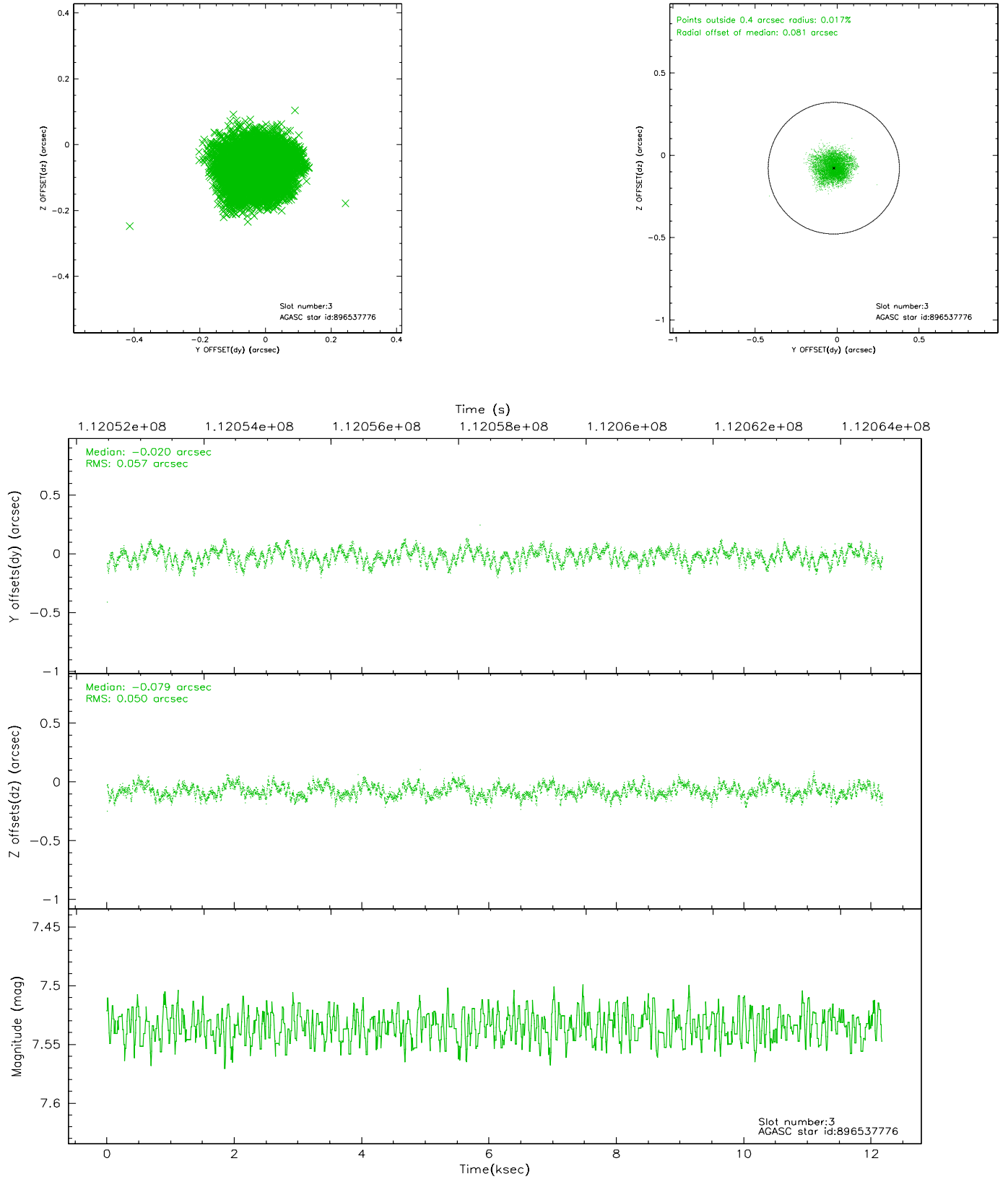
### Slot Statistics

slot	status	id	mag	n_pts	med_dy	med_dz	dr1	dr2	ra	dec	mean_y	mean_z
0	FID	ACIS-I-3	7.45	2969	-0.013	0.208	0.008	0.014	0.000000	0.000000	55.66	-961.56
1	FID	ACIS-I-4	7.18	2968	-0.069	-0.075	0.007	0.011	0.000000	0.000000	2158.16	1070.95
2	FID	ACIS-I-5	7.23	2969	-0.016	-0.064	0.007	0.013	0.000000	0.000000	-1809.24	1069.31
3	GUIDE	896537776	7.53	5941	-0.020	-0.079	0.083	0.129	266.655684	-29.665673	830.31	2183.95
4	GUIDE	896540808	7.50	5940	-0.072	-0.026	0.048	0.076	265.985401	-29.308604	-918.41	450.55
5	GUIDE	896536320	8.97	5938	0.033	0.031	0.070	0.113	266.369048	-29.307026	-638.70	1621.71
6	GUIDE	966924920	8.10	5940	0.156	0.070	0.059	0.093	265.875401	-30.176961	2039.40	-618.09
7	GUIDE	896405480	8.25	5940	-0.097	0.005	0.065	0.103	265.220460	-29.599691	-455.72	-2125.53

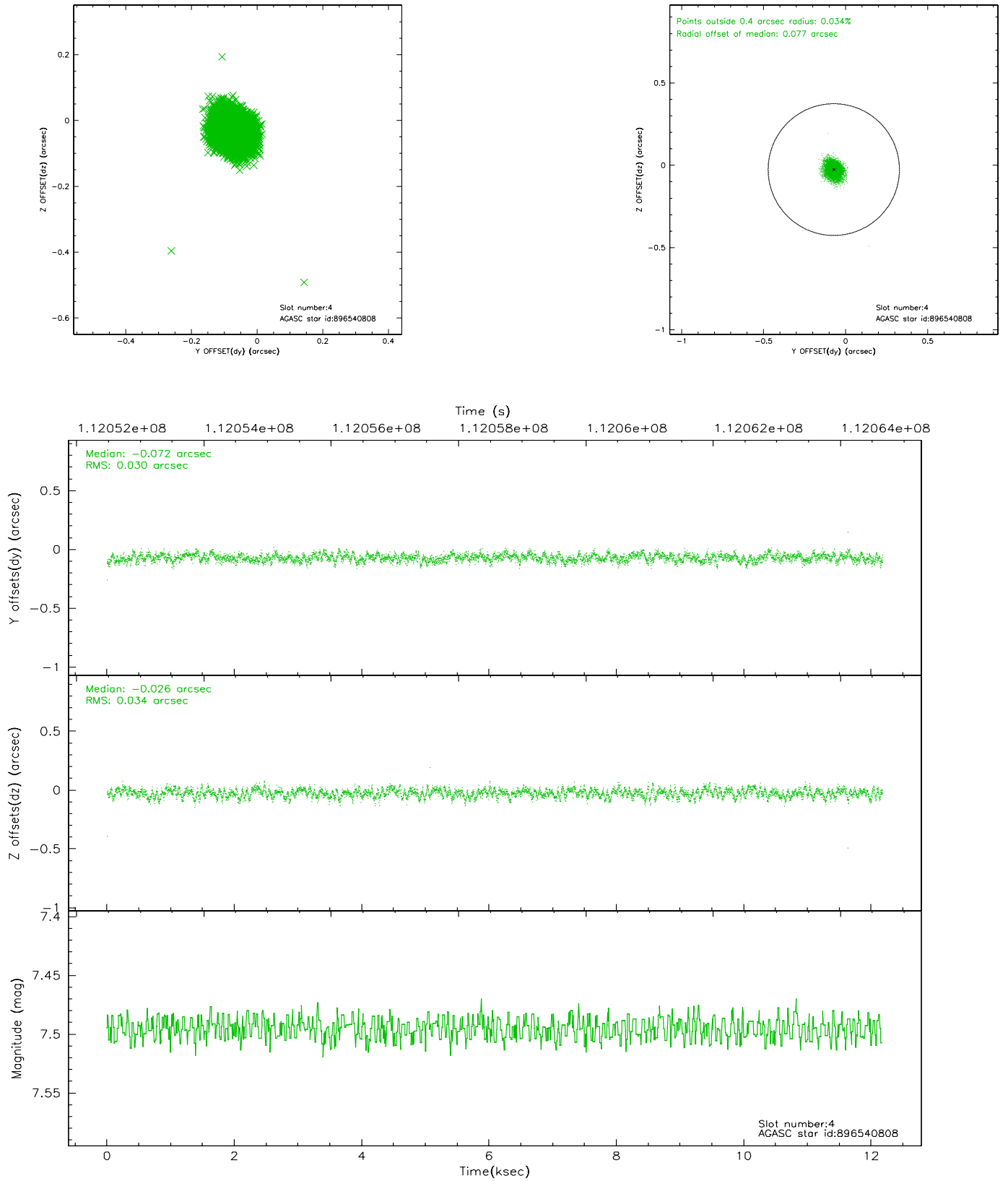


## 2.4 Star Slots

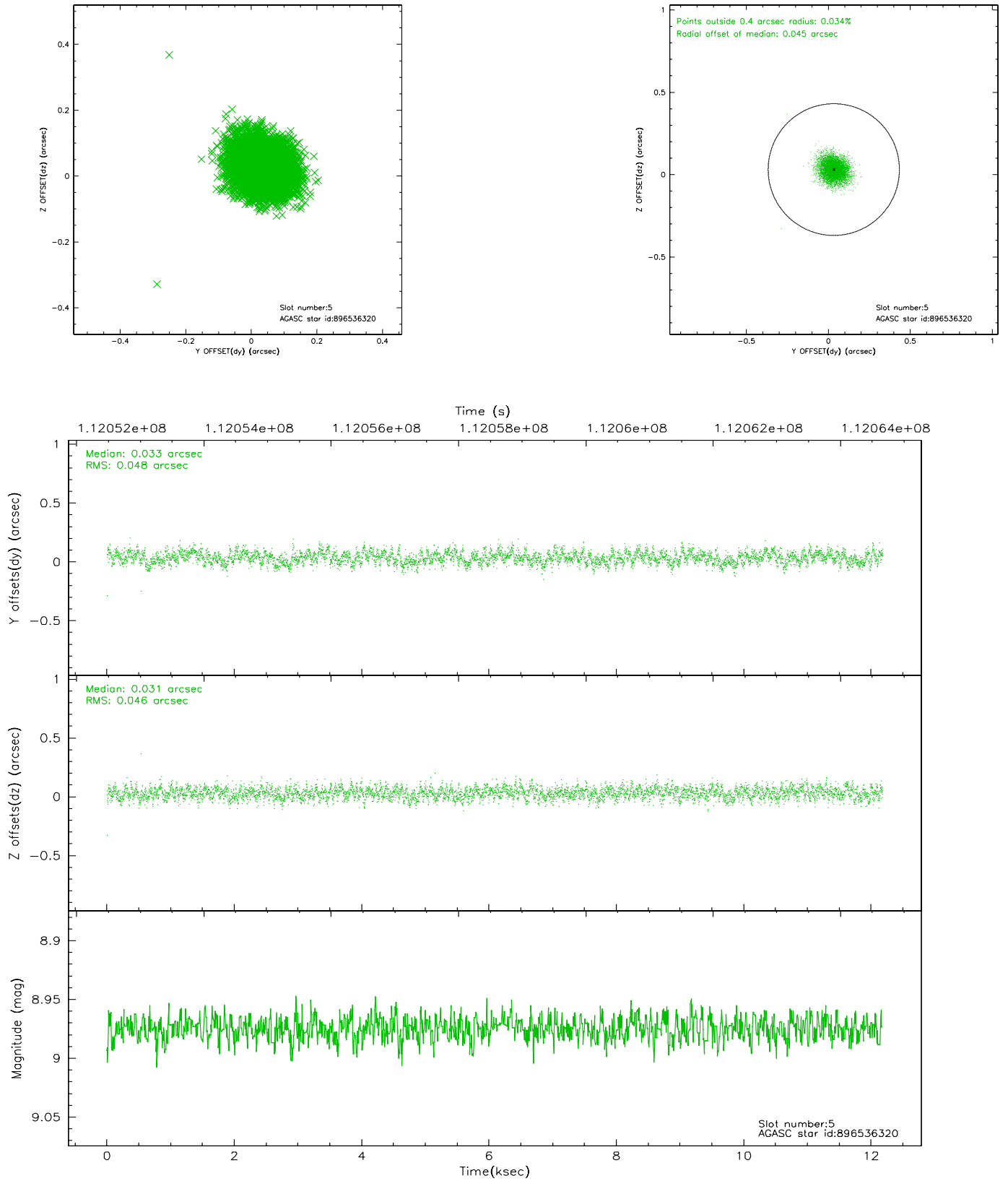
### 2.4.1 Slot 3



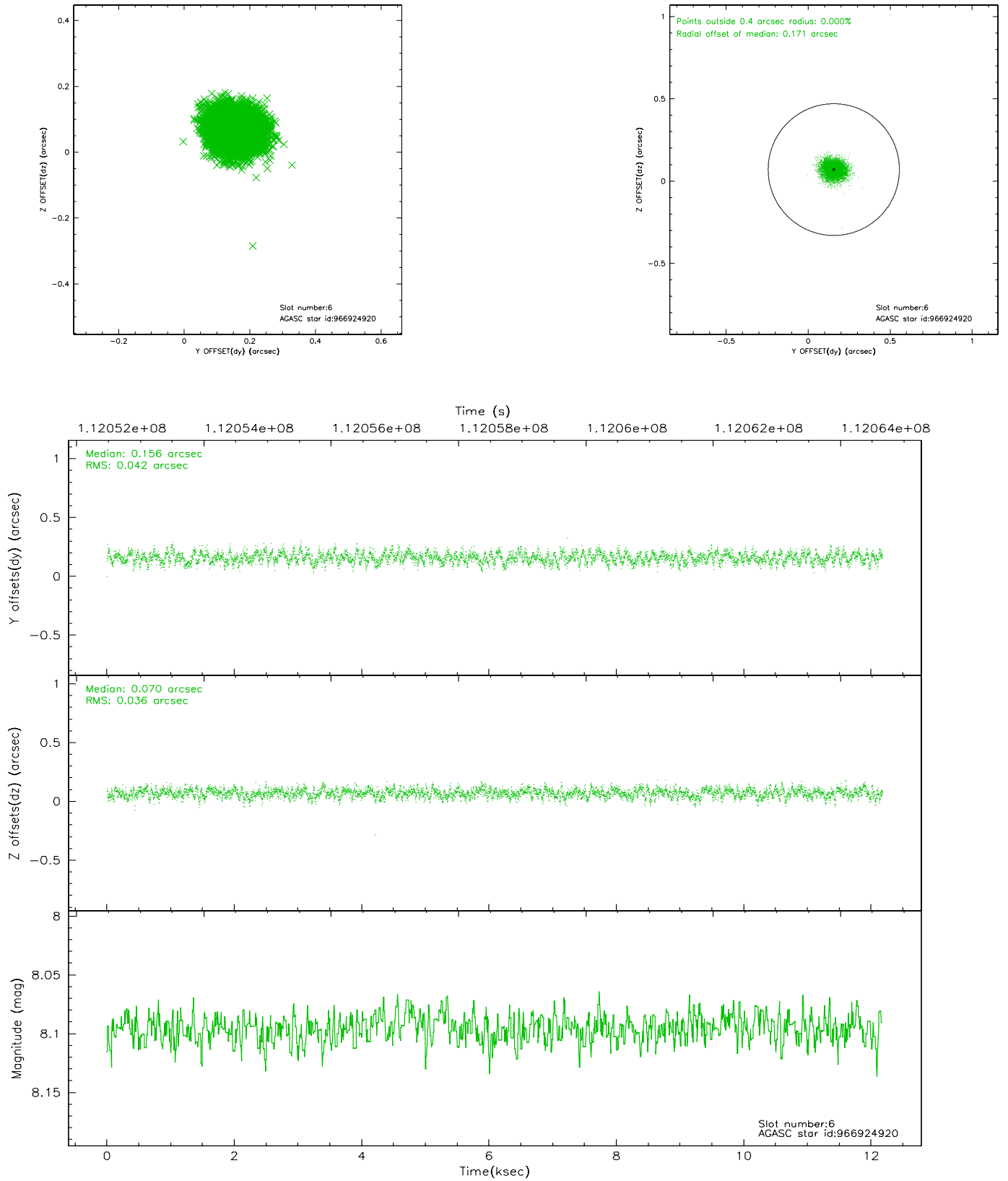
## 2.4.2 Slot 4



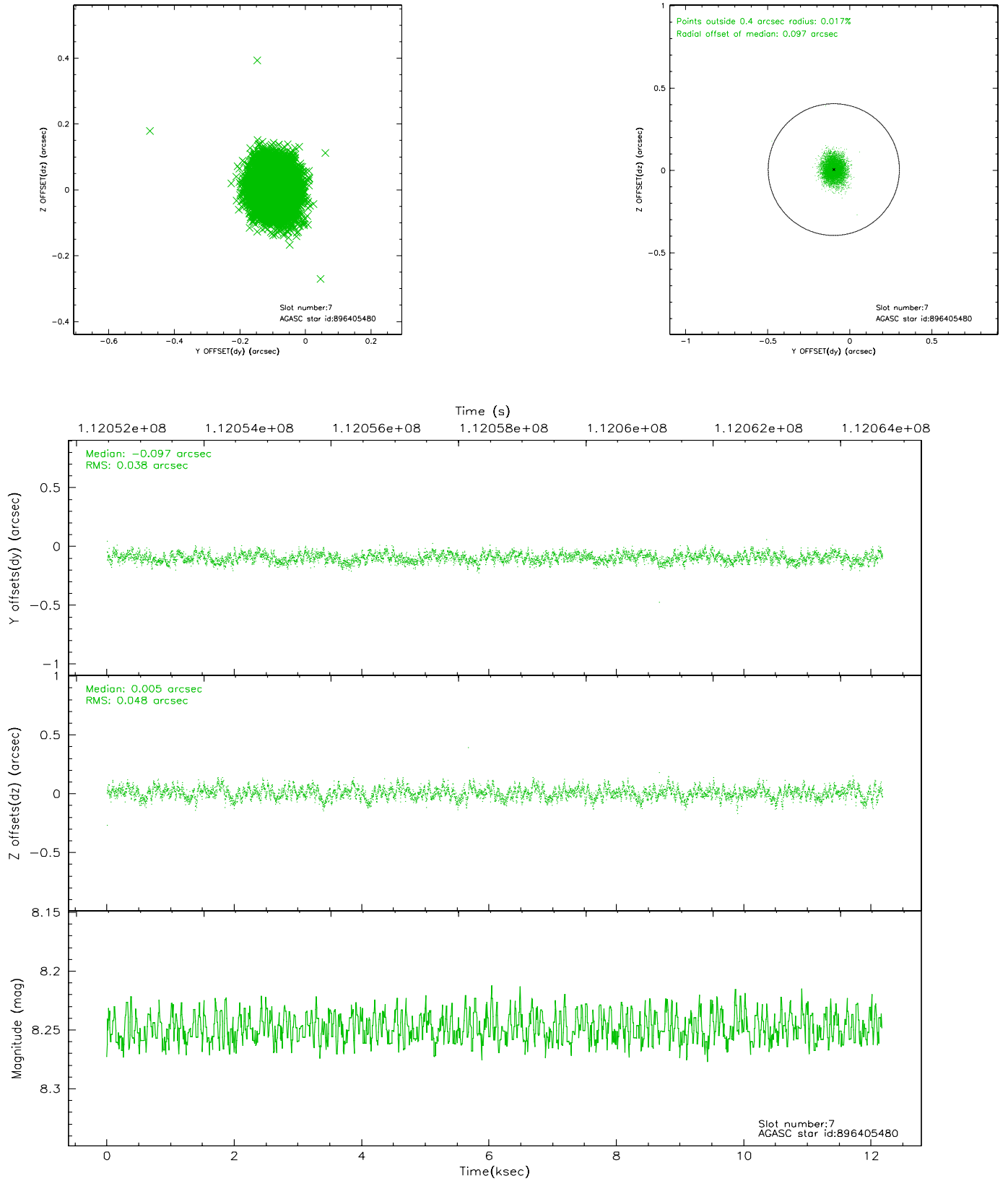
### 2.4.3 Slot 5



## 2.4.4 Slot 6

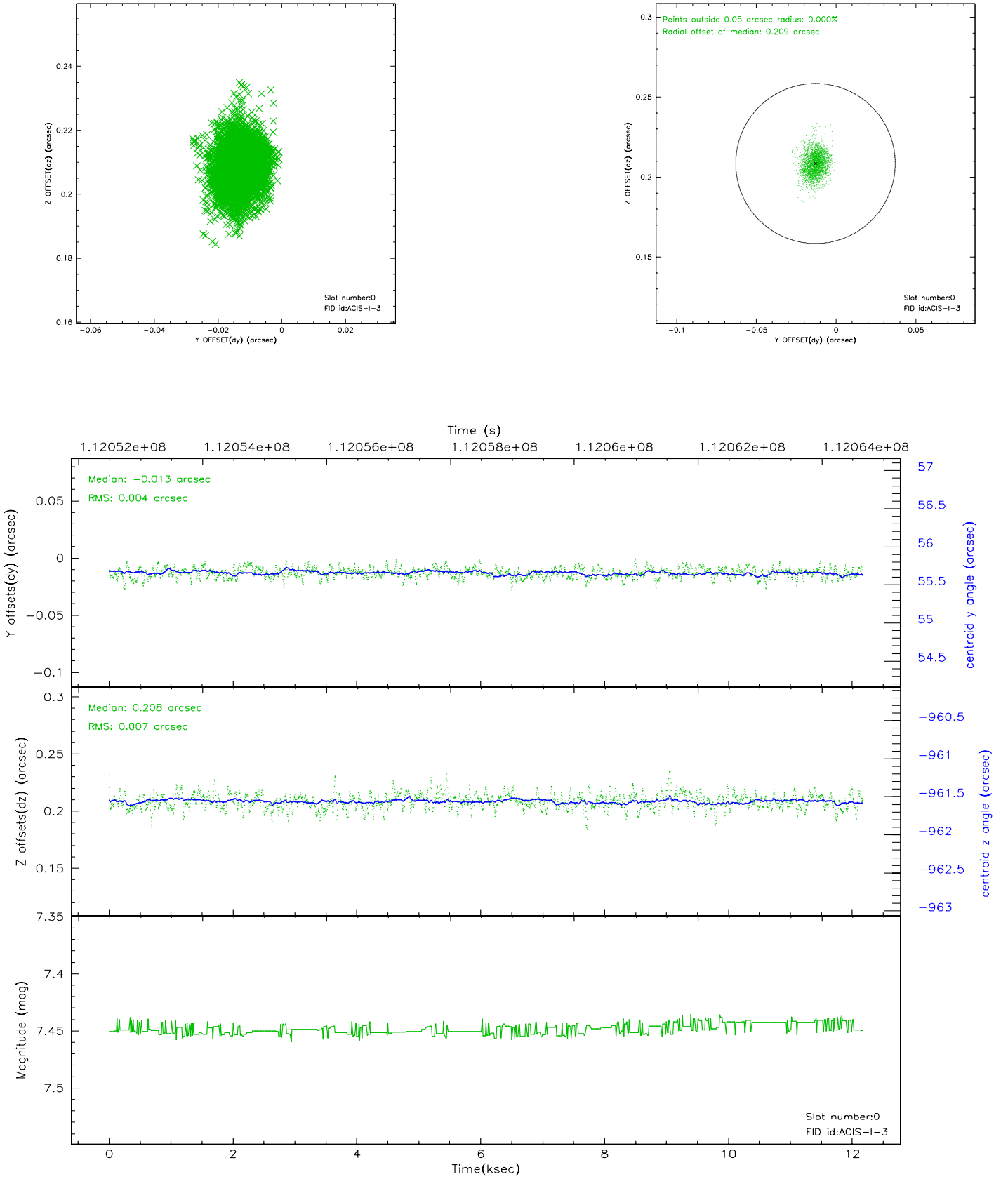


## 2.4.5 Slot 7

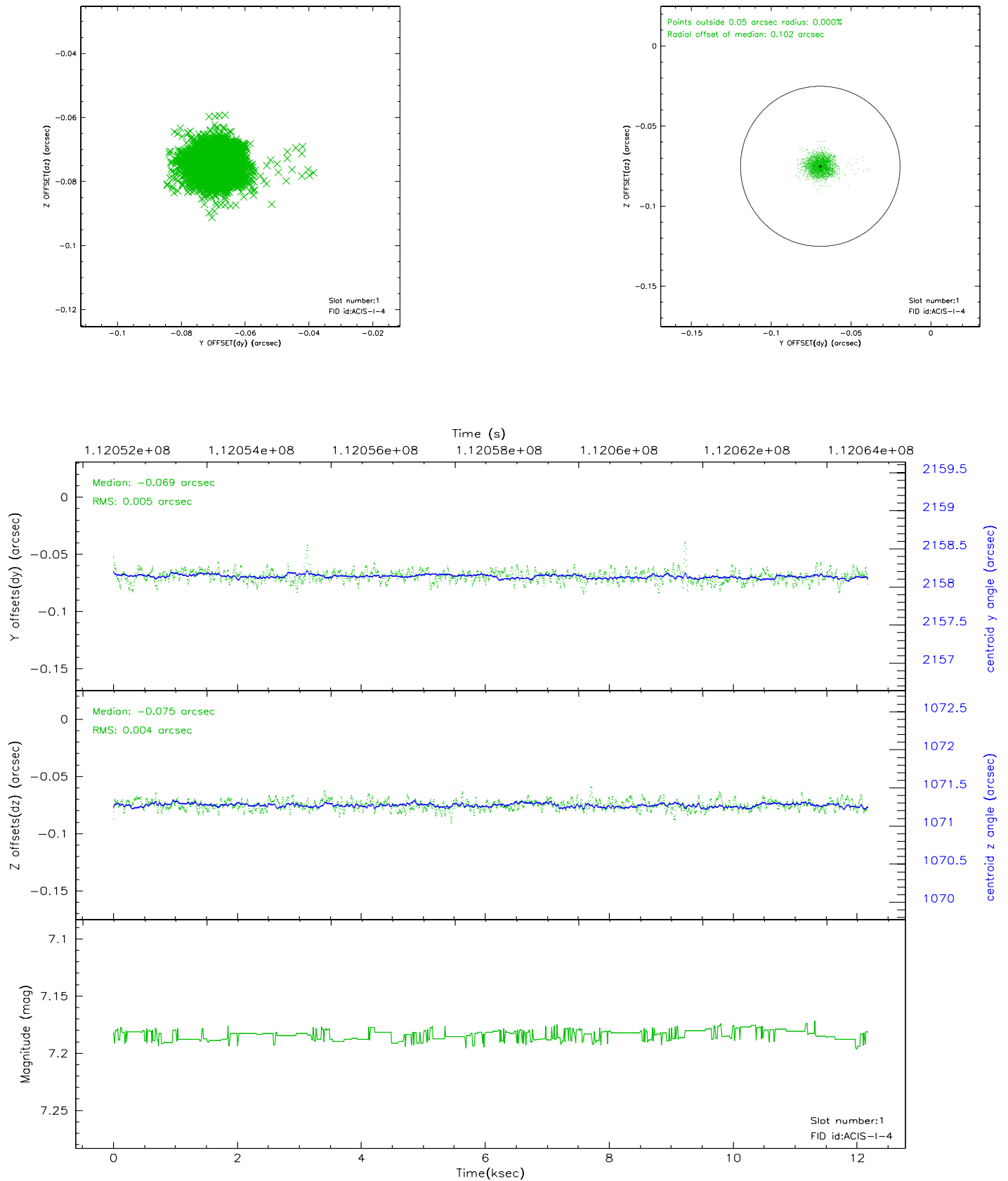


## 2.5 FID Slots

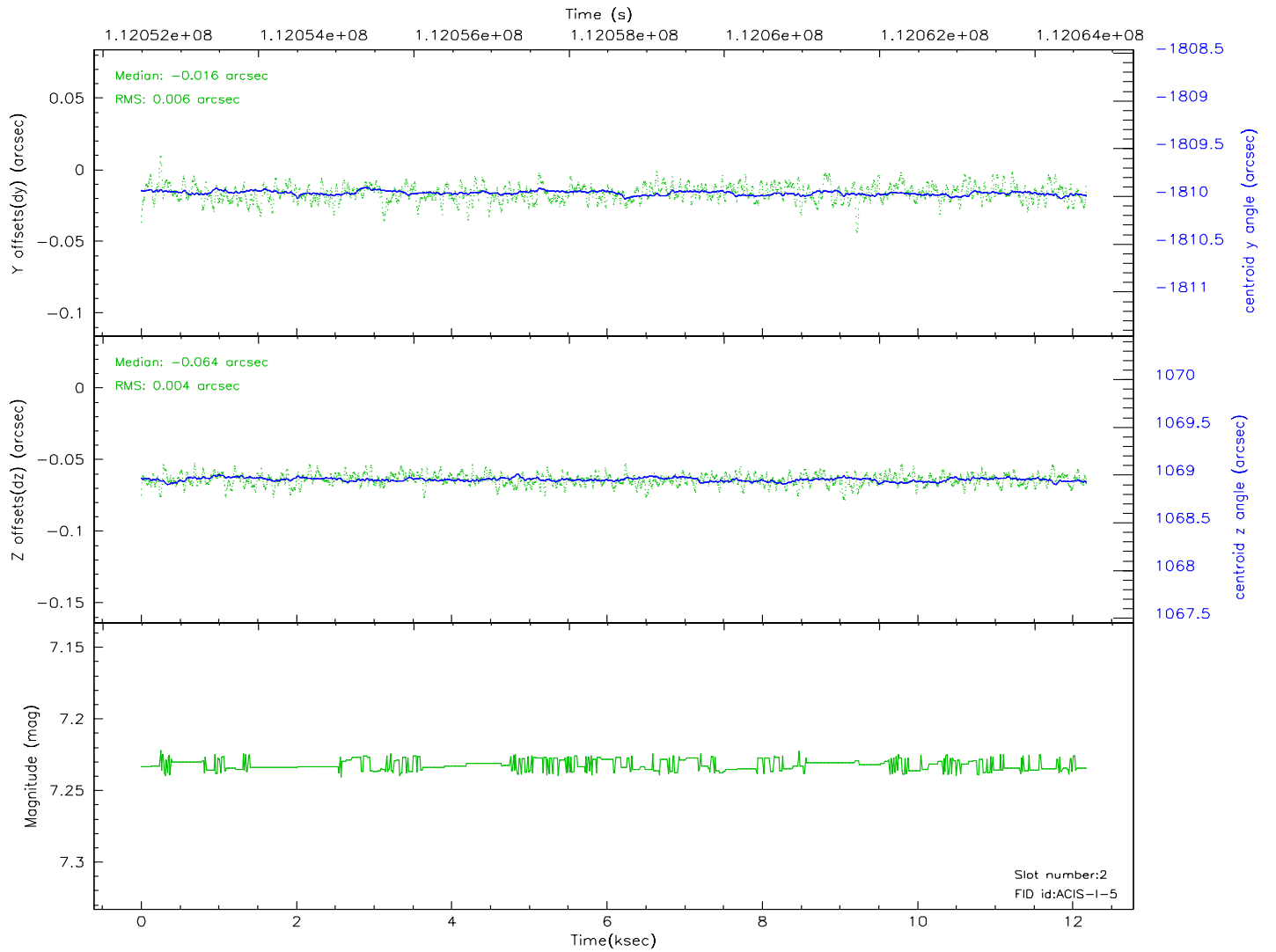
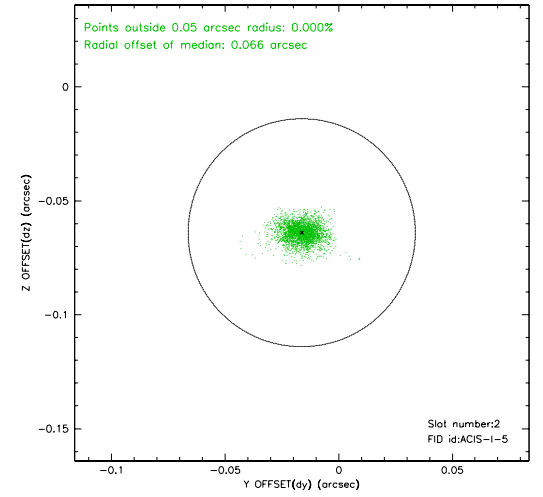
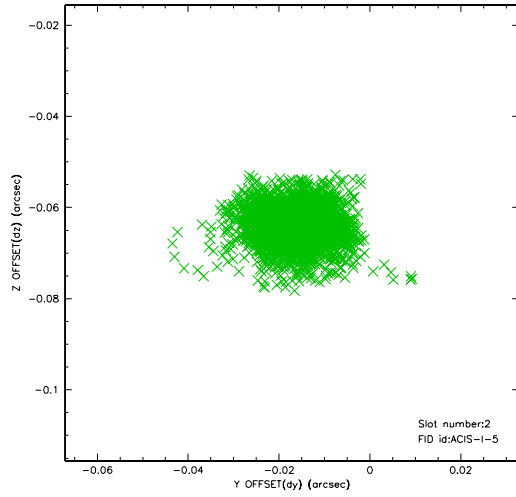
### 2.5.1 Slot 0



## 2.5.2 Slot 1

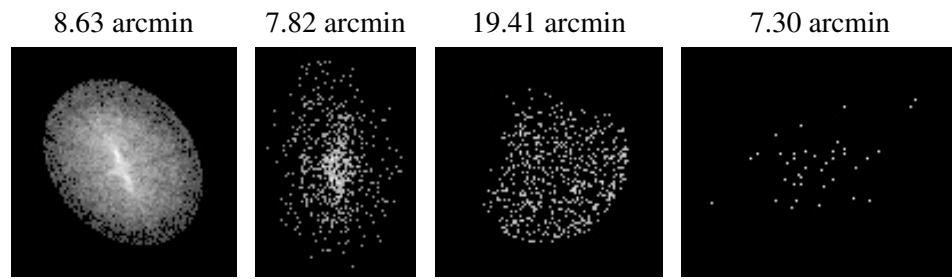


### 2.5.3 Slot 2





### 3 Point Sources



## A Summary

### A.1 Status

V&V Scientist	Beth Sundheim
V&V Date (YYYY-MM-DD)	2006.12.14
V&V Edition	1
V&V Disposition and Status	OK
V&V Charge Time	11.763

### A.2 Comments

Roll constraint satisfied.