

# V&V Reference Report

## L2 ASCDS Version : 8.4.5

Observation 2231 - L2 Version 3  
Chandra X-Ray Center

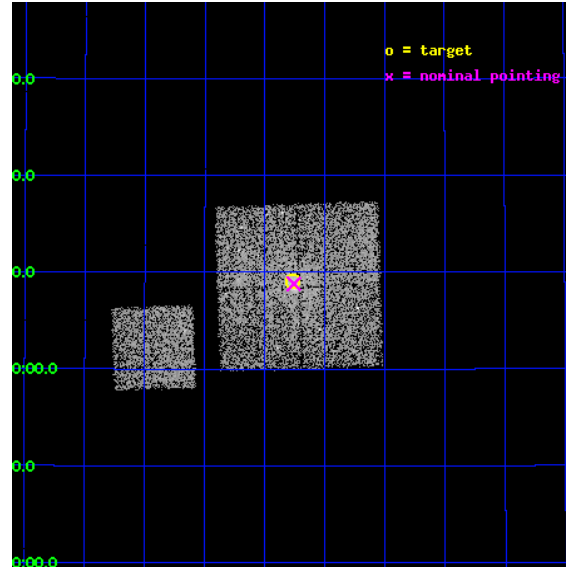
L2 Processing Date : Sep 21 2012

## Contents

<b>1</b>	<b>Front</b>	<b>2</b>
<b>2</b>	<b>OBI</b>	<b>3</b>
2.1	OBI . . . . .	3
2.1.1	Images . . . . .	3
2.1.2	Bias . . . . .	3
2.1.3	Parameters . . . . .	4
2.1.4	Events . . . . .	4
2.2	Compared Parameters . . . . .	5
2.3	Aspect . . . . .	6
2.4	Star Slots . . . . .	9
2.4.1	Slot 3 . . . . .	9
2.4.2	Slot 4 . . . . .	10
2.4.3	Slot 5 . . . . .	11
2.4.4	Slot 6 . . . . .	12
2.4.5	Slot 7 . . . . .	13
2.5	FID Slots . . . . .	14
2.5.1	Slot 0 . . . . .	14
2.5.2	Slot 1 . . . . .	15
2.5.3	Slot 2 . . . . .	16
<b>A</b>	<b>Summary</b>	<b>17</b>
A.1	Status . . . . .	17
A.2	Comments . . . . .	17

# 1 Front

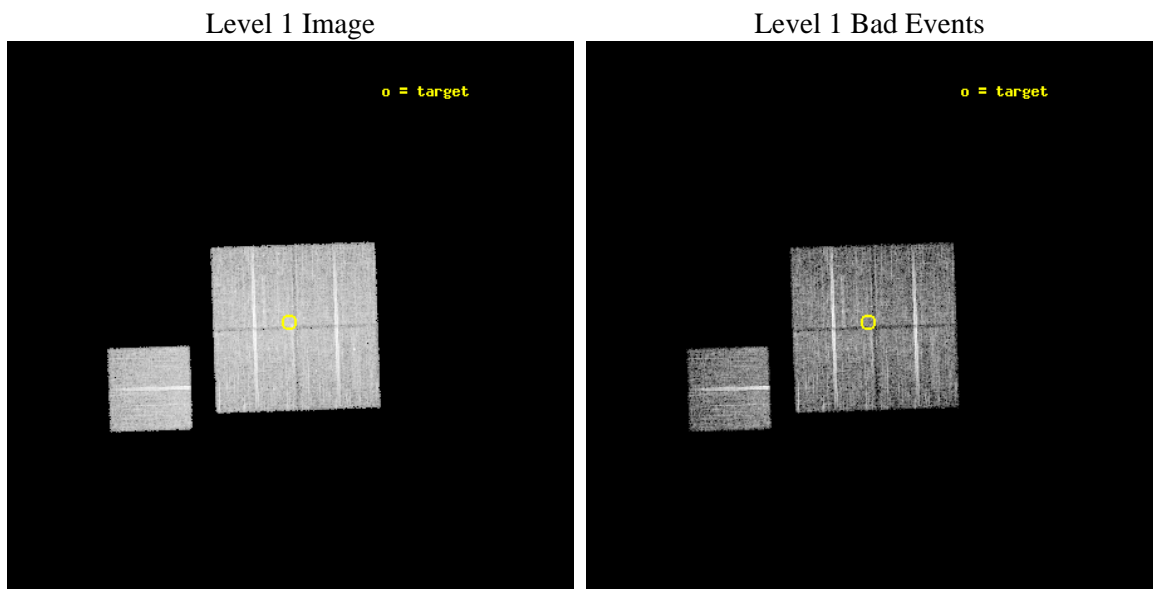
seq_num	800170	Sequence number
obs_id	2231	Observation id
title	SURVEY OF HARD POINT SOURCES IN GROUPS OF GALAXIES	Proposal title
observer	DR YASUSHI FUKAZAWA	Principal investigator
object	RGH80	Source name
dtcycle	0	&#160
cycle	P	events from which exps? Prim/Second/Both
ra_targ	200.066667	Observer's specified target RA [deg]
dec_targ	33.151111	Observer's specified target Dec [deg]
ra_nom	200.06428571858	Nominal RA [deg]
dec_nom	33.146854339897	Nominal Dec [deg]
roll_nom	268.08504720099	Nominal Roll [deg]
revision	3	Processing version of data
ontime	11104.19997865	Sum of GTIs [s]
livetime	10959.115431135	Livetime [s]
ontime0	11101.058988497	Sum of GTIs [s]
ontime1	11104.19997865	Sum of GTIs [s]
ontime2	11101.059018403	Sum of GTIs [s]
ontime3	11104.19997865	Sum of GTIs [s]
ontime6	11101.058988482	Sum of GTIs [s]
l2events	28822	Number of level 2 events



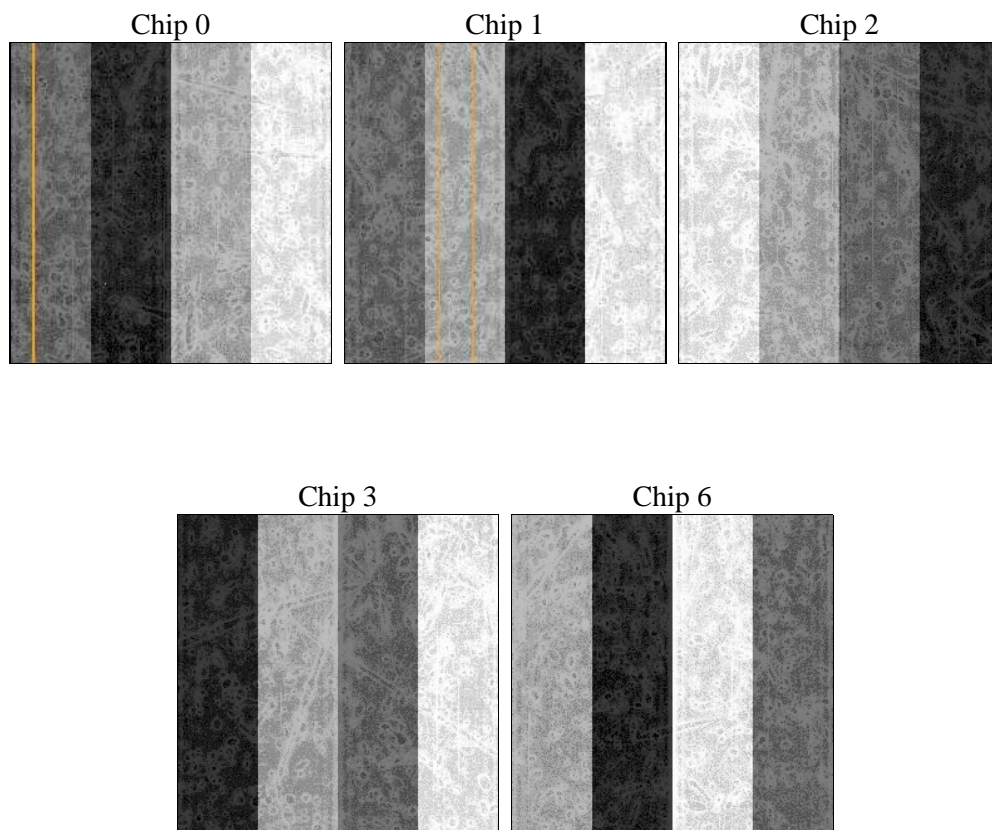
## 2 OBI

### 2.1 OBI

#### 2.1.1 Images



#### 2.1.2 Bias



### 2.1.3 Parameters

obi_num	0	Obi number	sched_exp_time	11000.000000	[s] Scheduled observation exposure time
ascdsver	8.4.5	Processing system revision	ontime	11104.19997865	Sum of GTIs [s]
caldsver	4.5.1.1	&#160	ontime0	11101.058988497	Sum of GTIs [s]
date	2012-09-21T10:20:58	Date and time of file creation	ontime1	11104.19997865	Sum of GTIs [s]
revision	3	Processing version of data	ontime2	11101.059018403	Sum of GTIs [s]
			ontime3	11104.19997865	Sum of GTIs [s]
			ontime6	11101.058988482	Sum of GTIs [s]
			l1events	329951	Number of level 1 events

### 2.1.4 Events

	ccd 0	ccd 1	ccd 2	ccd 3	ccd 6
level 1 events	61874	61481	71418	69095	66083
rejected events	55147	54182	64675	61683	59936
rejected %	89%	88%	90%	89%	90%

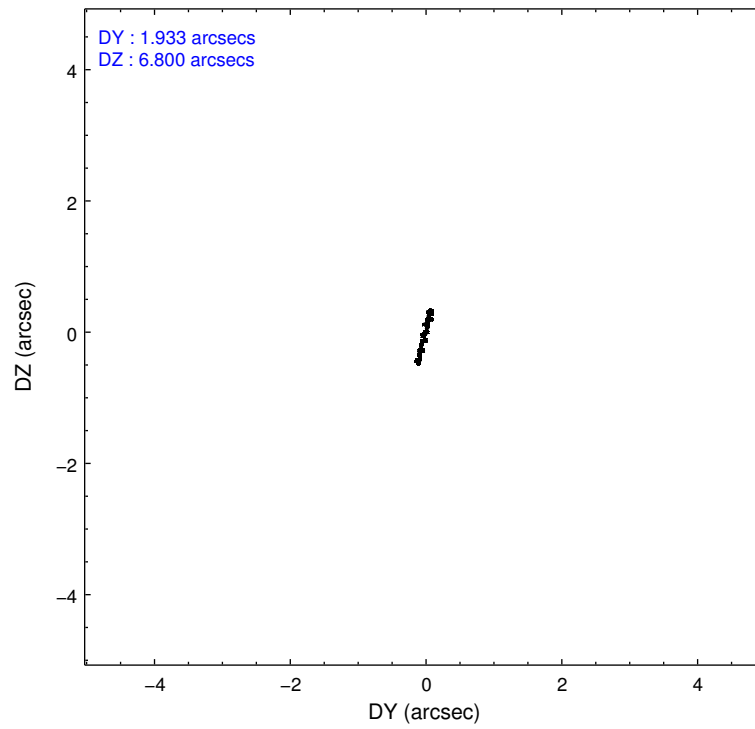
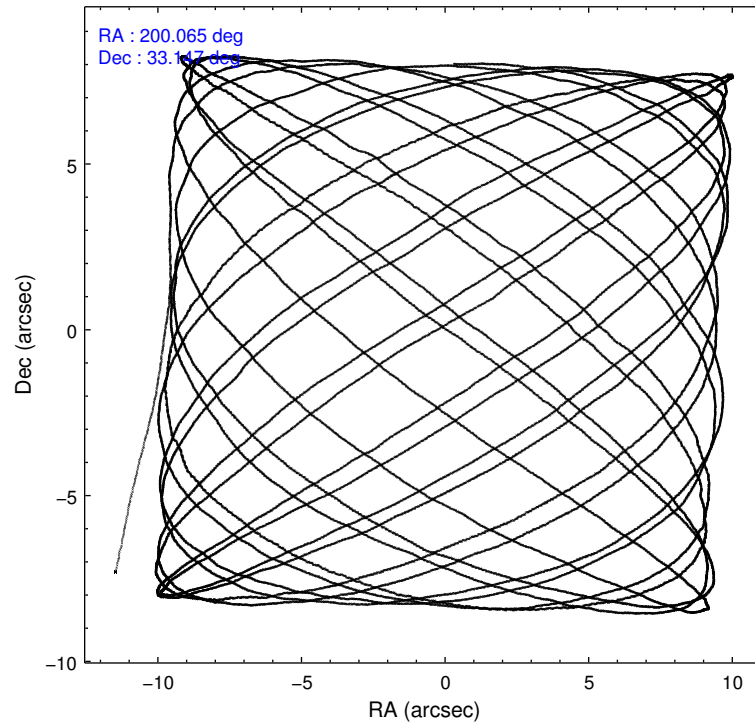
	ccd 0	ccd 1	ccd 2	ccd 3	ccd 6
grade 0 events	3069	3282	3152	3858	2404
	4%	5%	4%	5%	3%
grade 1 events	28	25	30	36	32
	0%	0%	0%	0%	0%
grade 2 events	1454	1460	1530	1451	1323
	2%	2%	2%	2%	2%
grade 3 events	770	857	729	736	785
	1%	1%	1%	1%	1%
grade 4 events	687	817	705	651	742
	1%	1%	0%	0%	1%
grade 5 events	1962	2191	1928	2207	2320
	3%	3%	2%	3%	3%
grade 6 events	1195	1391	1122	1193	1334
	1%	2%	1%	1%	2%
grade 7 events	52709	51458	62222	58963	57143
	85%	83%	87%	85%	86%

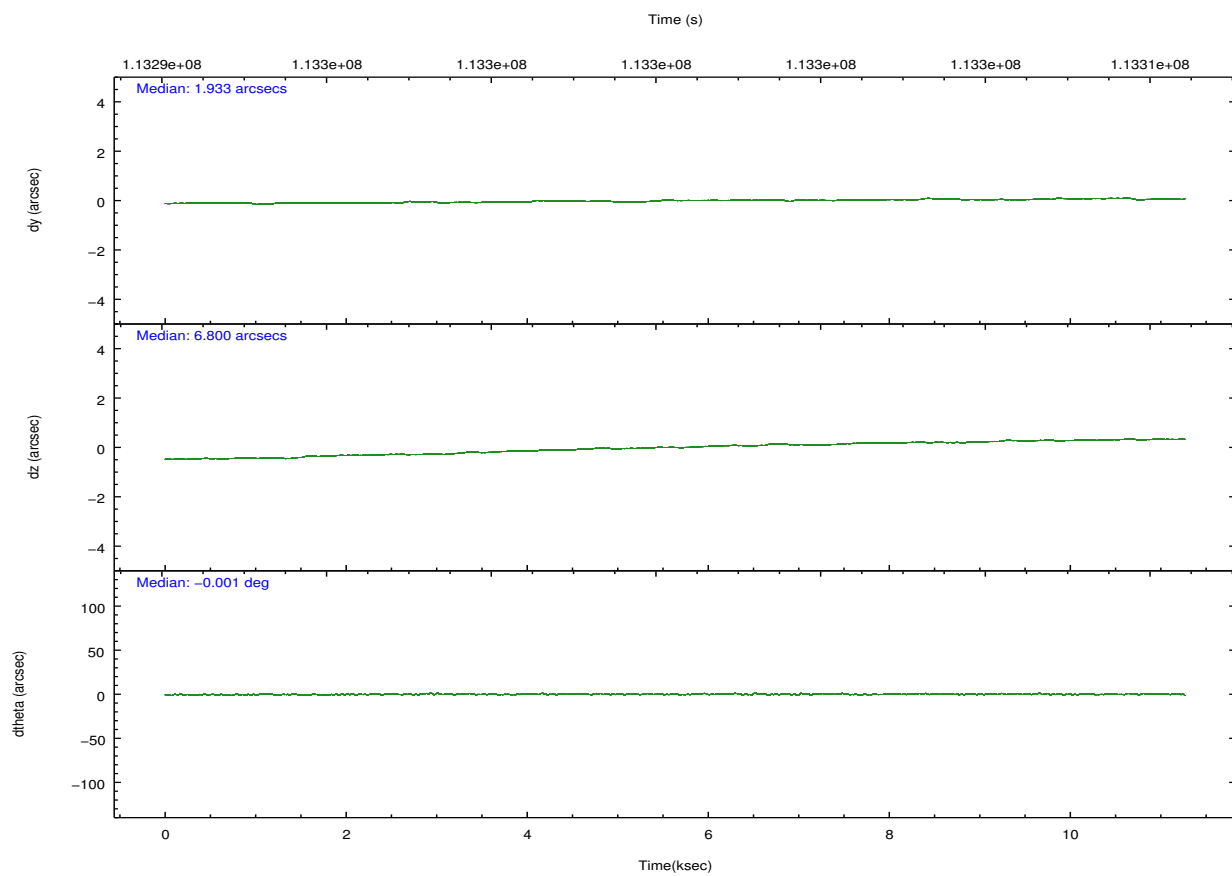
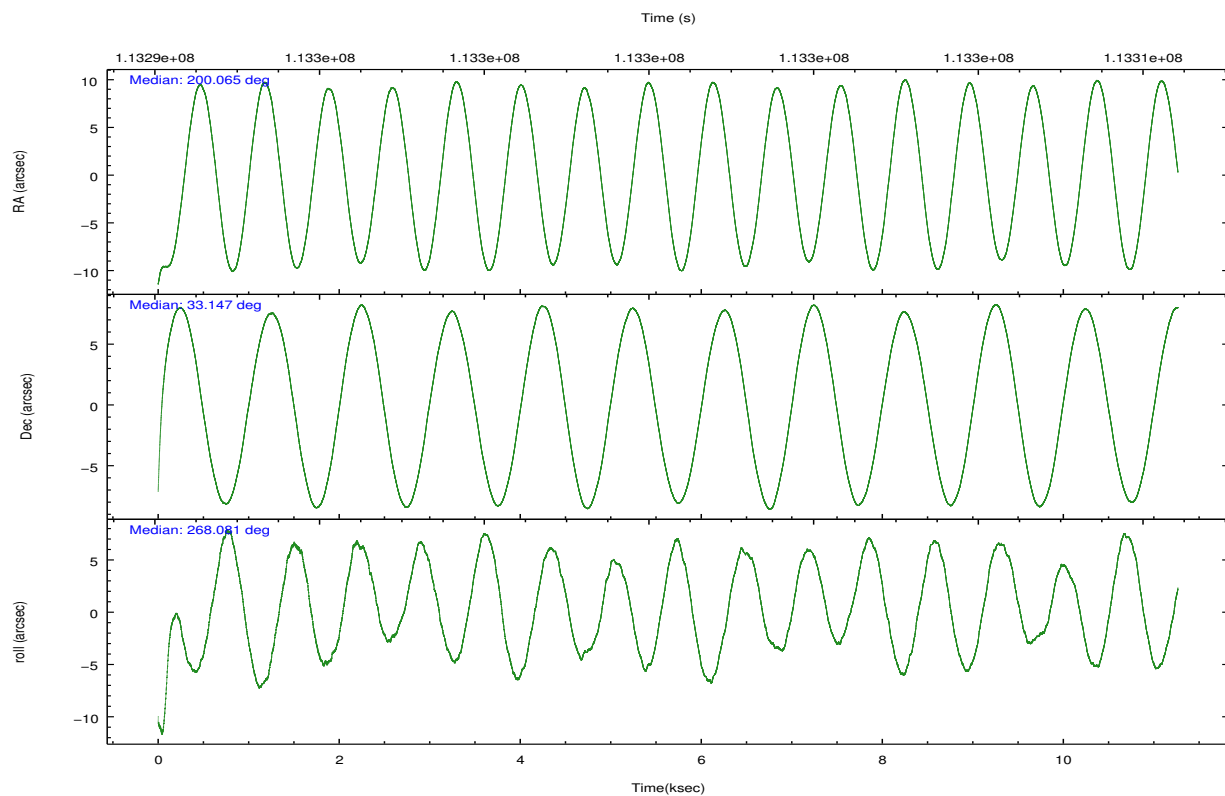


## 2.2 Compared Parameters

Parameter	Planned	Actual	Parameter	Planned	Actual
Instrument	ACIS	ACIS	Obspar format version number	7	7
Detector	ACIS-01236	ACIS-01236	Obspar file type	PREDICTED	ACTUAL
Grating	NONE	NONE	Obspar update status	NONE	UPDATED
Data mode	VFAINT	VFAINT	Number of optional ACIS chips dropped	0	0
Observation mode	POINTING	POINTING	On-chip summing requested	N	N
[deg] Pointing RA	200.048820	200.0642857185825	Subarray requested	NONE	NONE
[deg] Pointing Dec	33.171016	33.14685433989678	Alternating exposures requested	N	N
[deg] Pointing Roll	267.884828	268.0850472009858	[s] Primary exposure time	0.000000	3.1
[mm] SIM focus pos	-0.782348	-0.7809083437167272			
[mm] SIM defocus	0	0.001439871863259334			
[mm] SIM translation stage pos	-233.592463	-233.5874344608287			
[mm] SIM translation stage offset	0	-0.005018542100998502			
[s] Observation start time (MET)	113294709.184000	113293357.52267			
Observation start date	2001-08-04T06:44:05	2001-08-04T06:22:37			
[s] Observation end time (MET)	113305709.184000	113306181.81067			
Observation end date	2001-08-04T09:47:25	2001-08-04T09:56:21			
Read mode	TIMED	TIMED			

## 2.3 Aspect



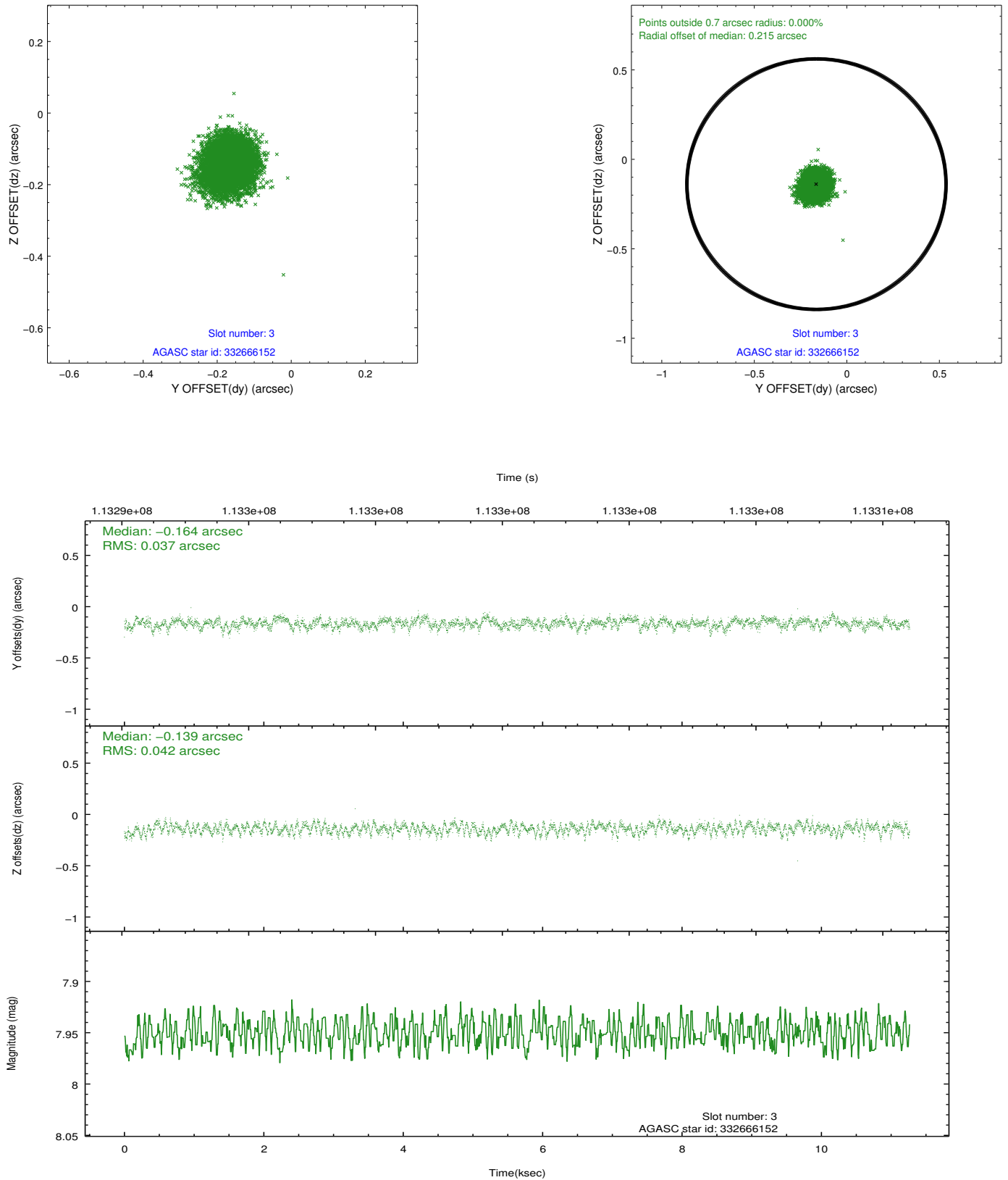


### Slot Statistics

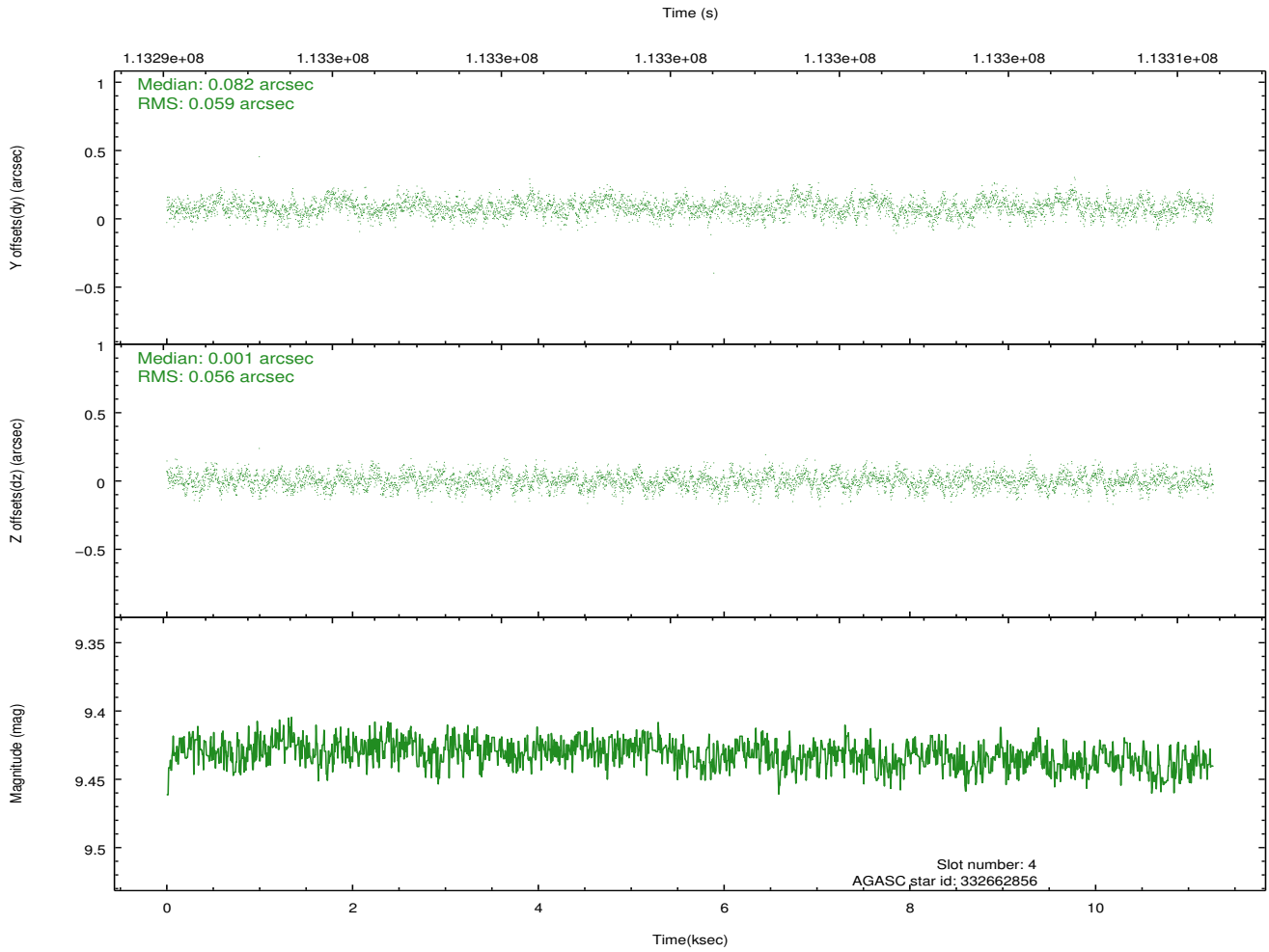
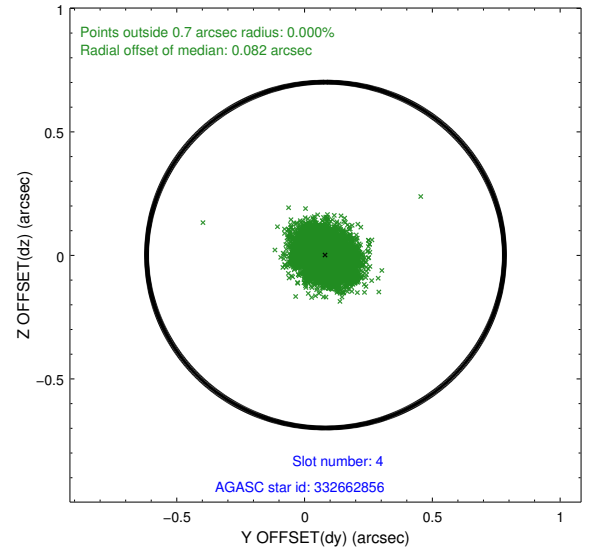
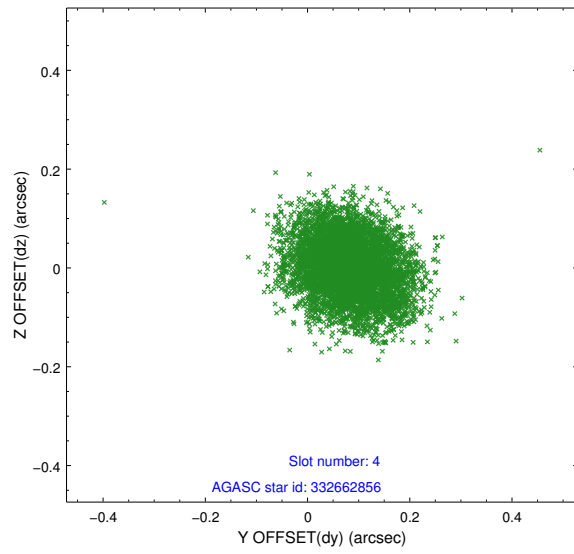
slot	status	id	mag	n_pts	med_dy	med_dz	dr1	dr2	ra	dec	mean_y	mean_z
0	FID	ACIS-I-1	7.25	2746	-0.003	0.017	0.008	0.013	0.000000	0.000000	937.88	-830.16
1	FID	ACIS-I-5	7.24	2747	-0.042	0.051	0.008	0.012	0.000000	0.000000	-1809.97	1067.20
2	FID	ACIS-I-6	7.27	2747	-0.046	0.002	0.012	0.017	0.000000	0.000000	402.95	1712.12
3	GUIDE	332666152	7.95	5496	-0.164	-0.139	0.061	0.096	199.716427	33.438695	-926.99	-1034.68
4	GUIDE	332662856	9.43	5497	0.082	0.001	0.087	0.140	200.000182	32.747147	1531.05	-91.88
5	GUIDE	332663448	9.81	5497	0.060	-0.012	0.119	0.201	199.590906	32.849009	1207.83	-1342.27
6	GUIDE	332668240	9.94	5496	-0.112	0.068	0.128	0.213	200.683713	33.779536	-2264.34	1816.19
7	GUIDE	332662584	9.88	5492	0.138	0.079	0.117	0.190	200.586294	32.545213	2187.38	1712.51

## 2.4 Star Slots

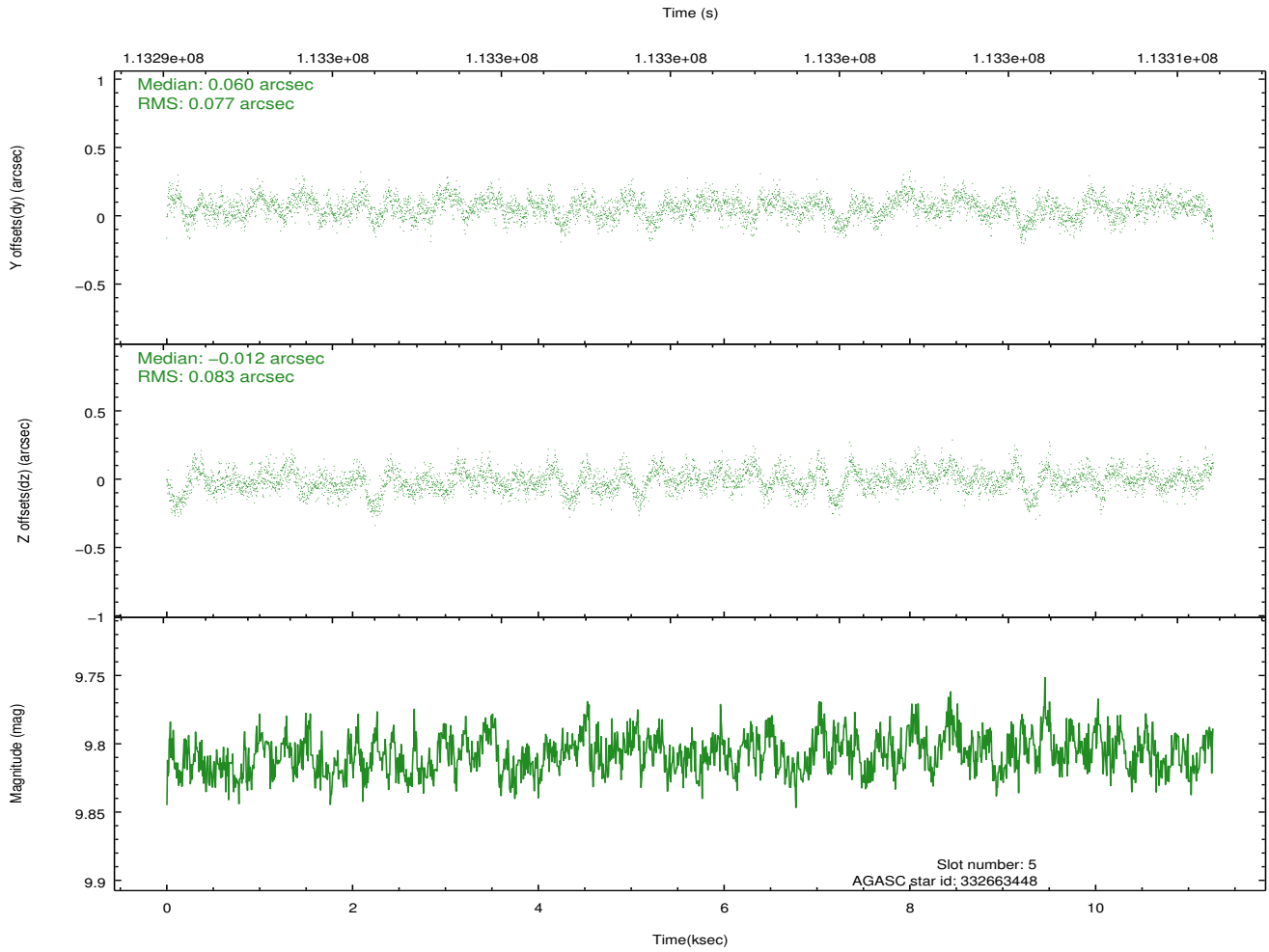
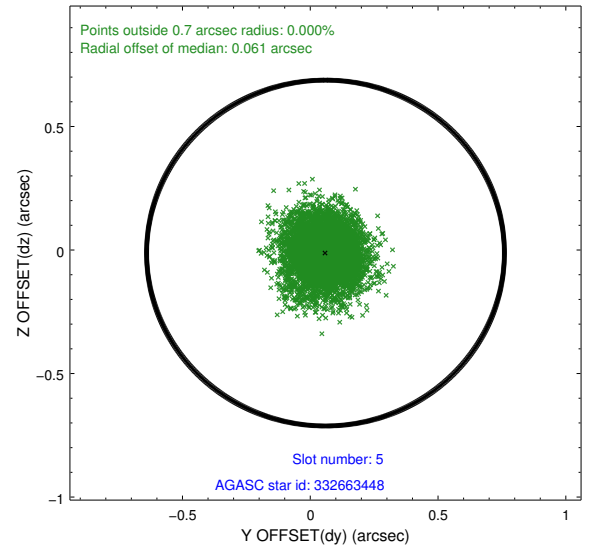
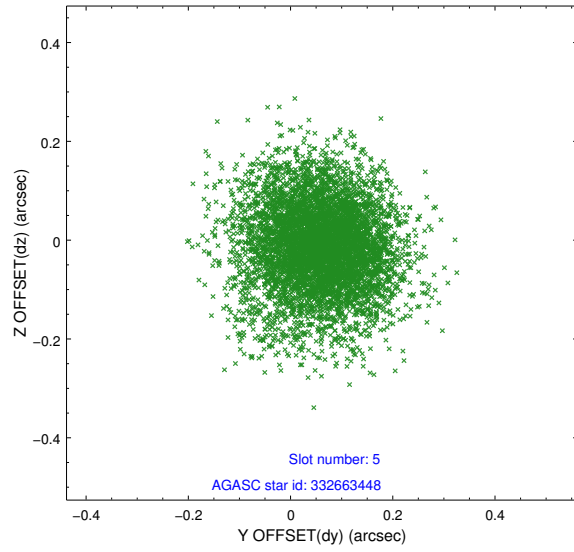
### 2.4.1 Slot 3



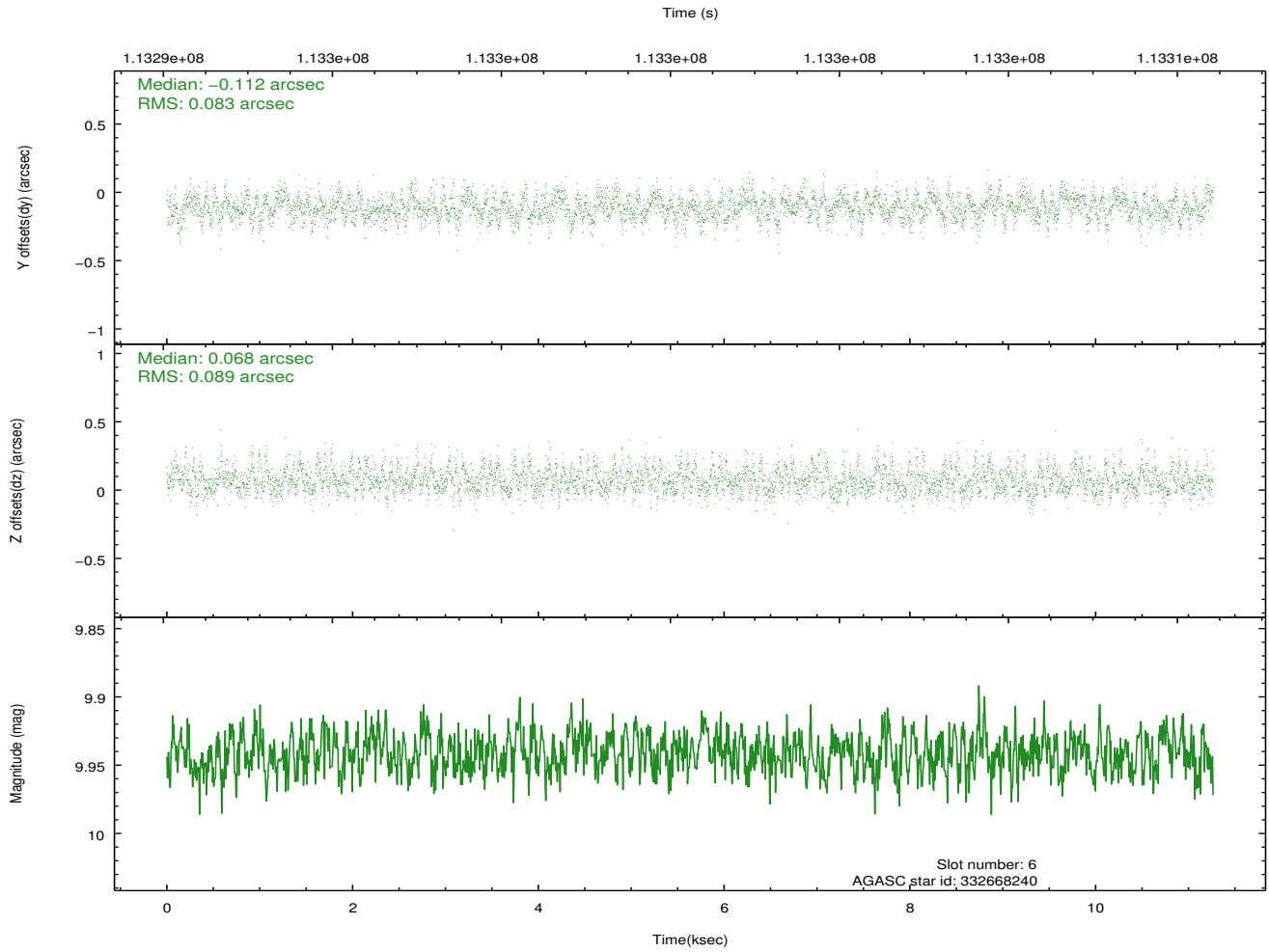
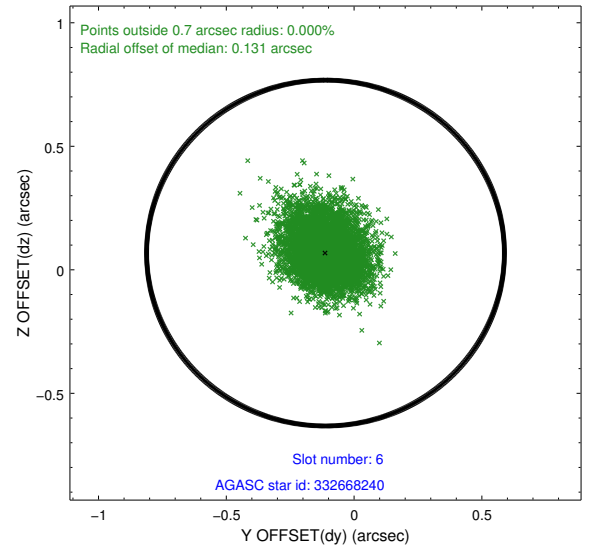
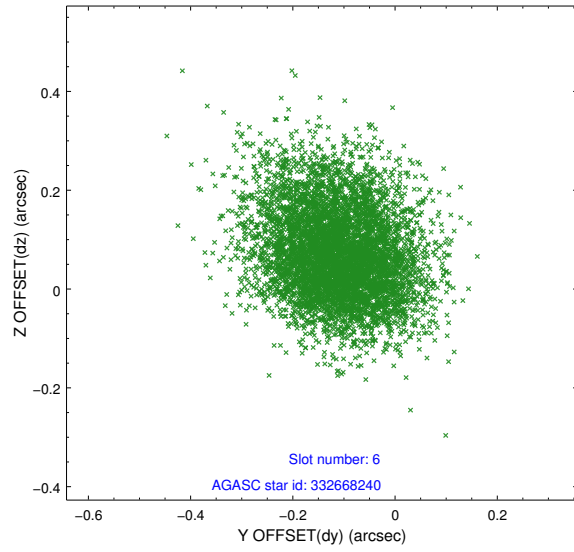
## 2.4.2 Slot 4



### 2.4.3 Slot 5

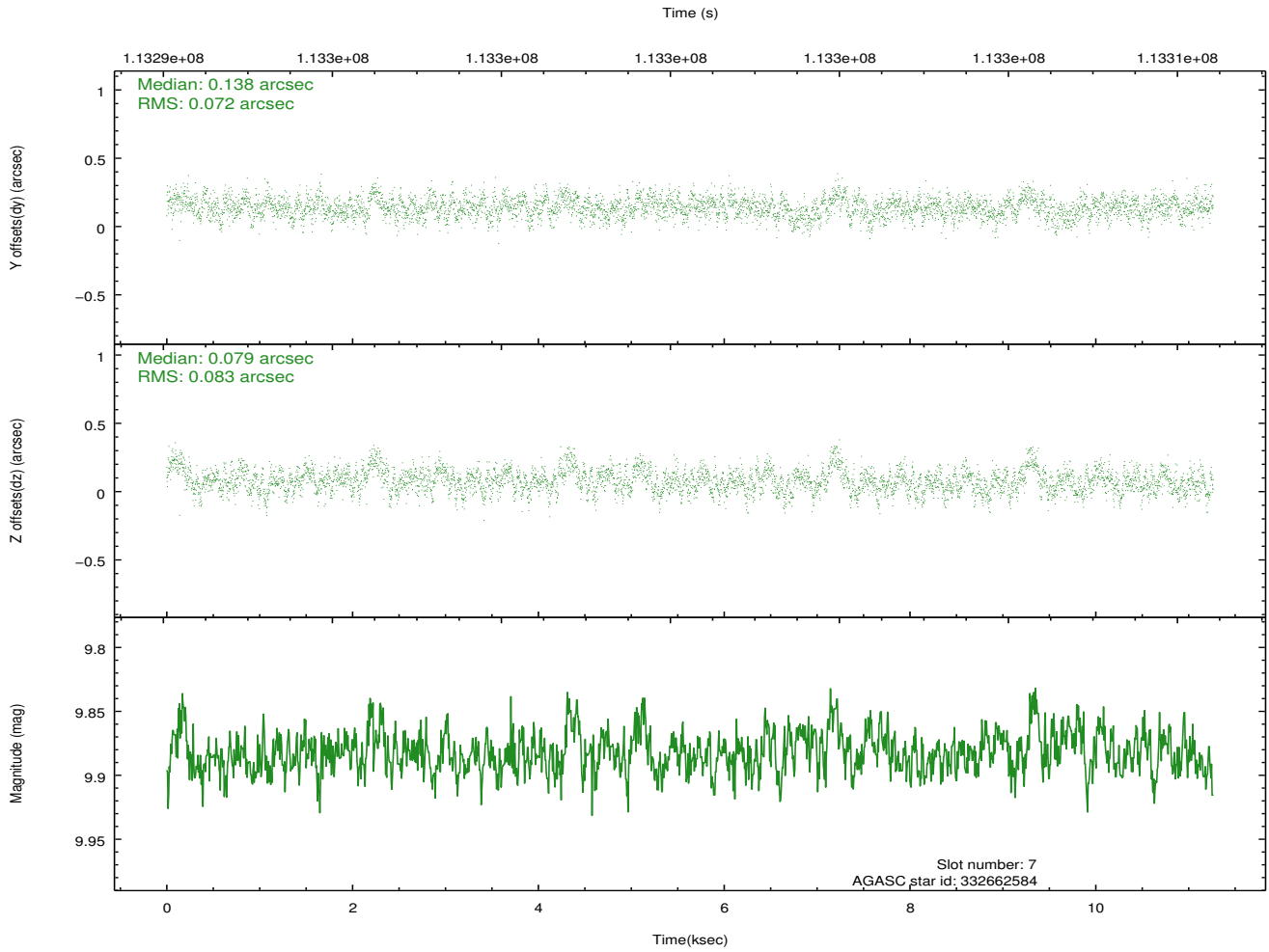
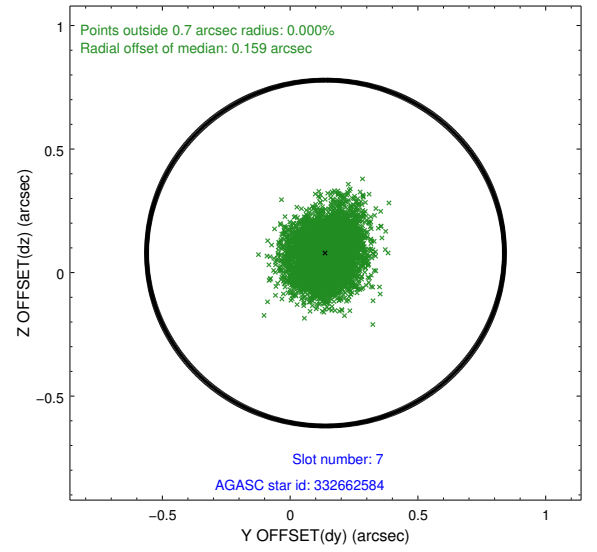
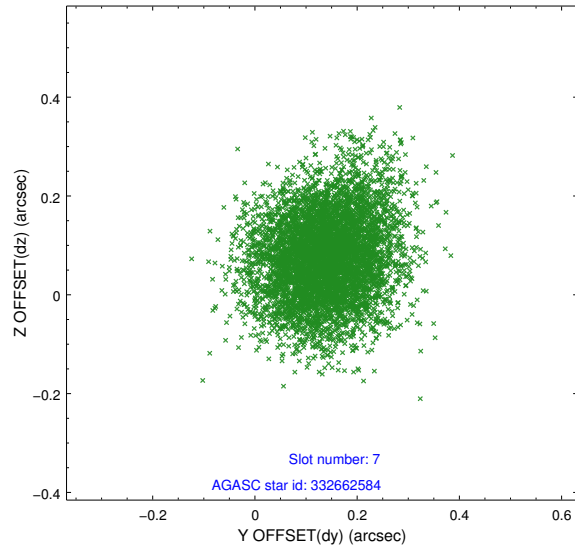


## 2.4.4 Slot 6



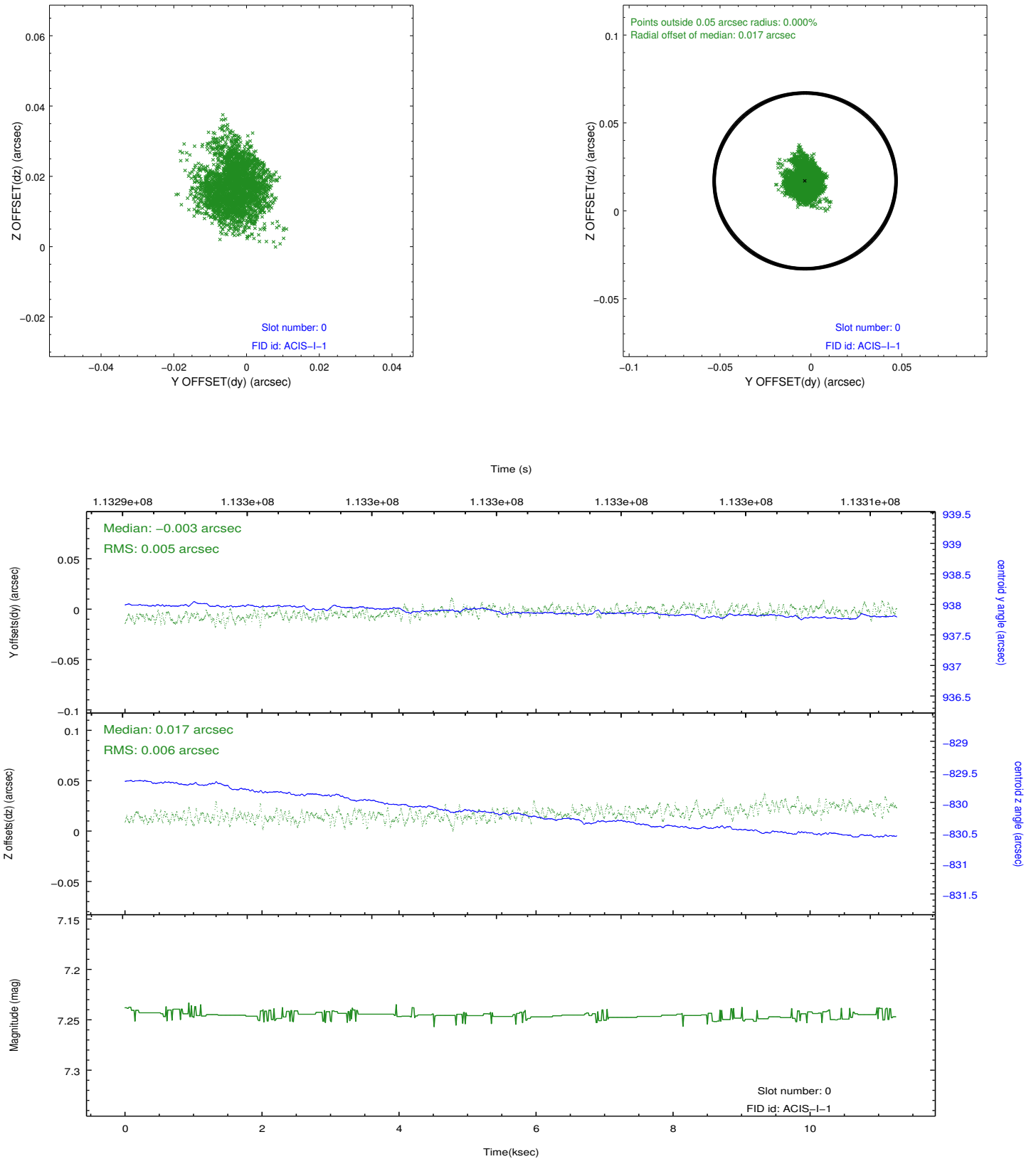


## 2.4.5 Slot 7

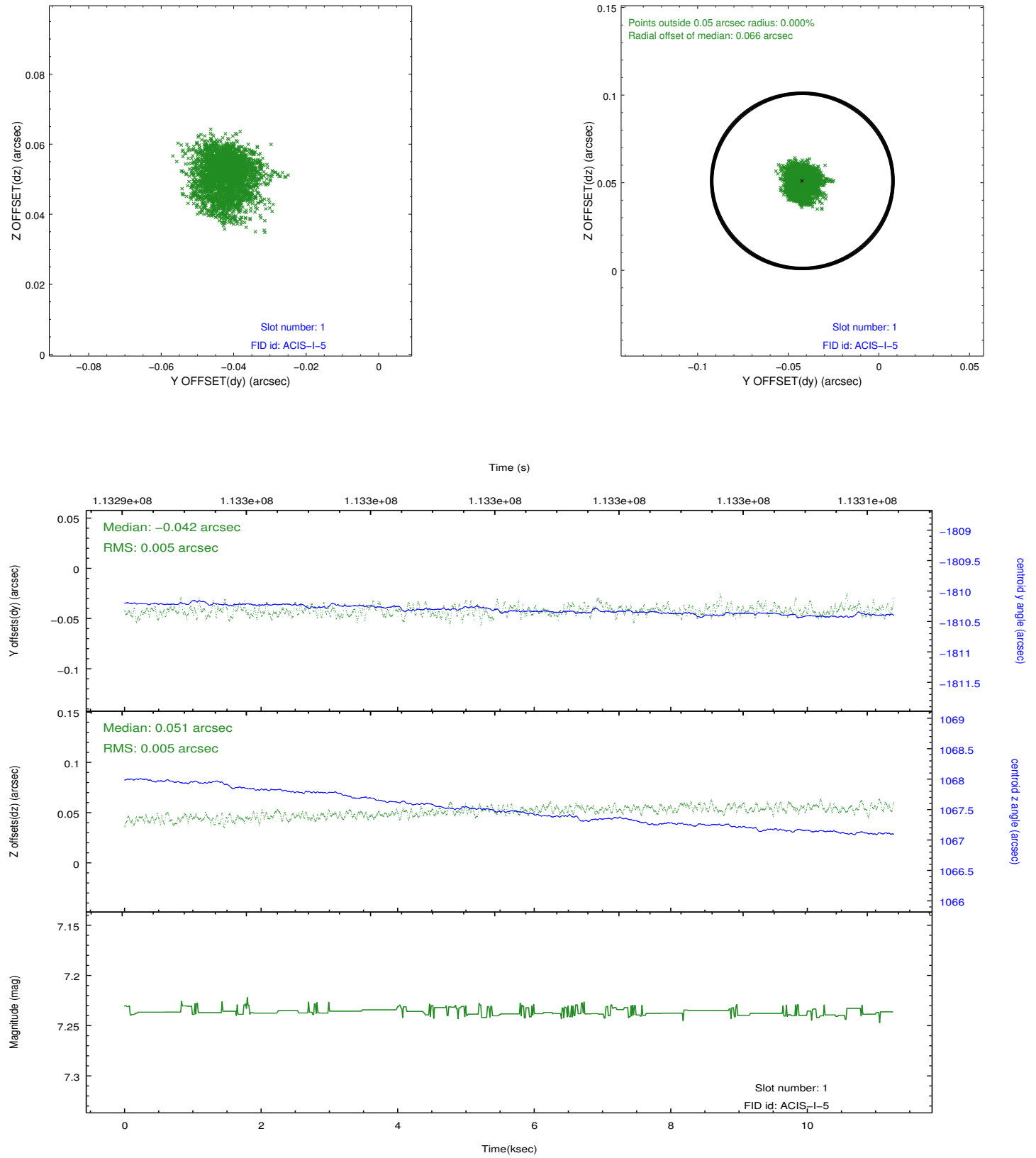


## 2.5 FID Slots

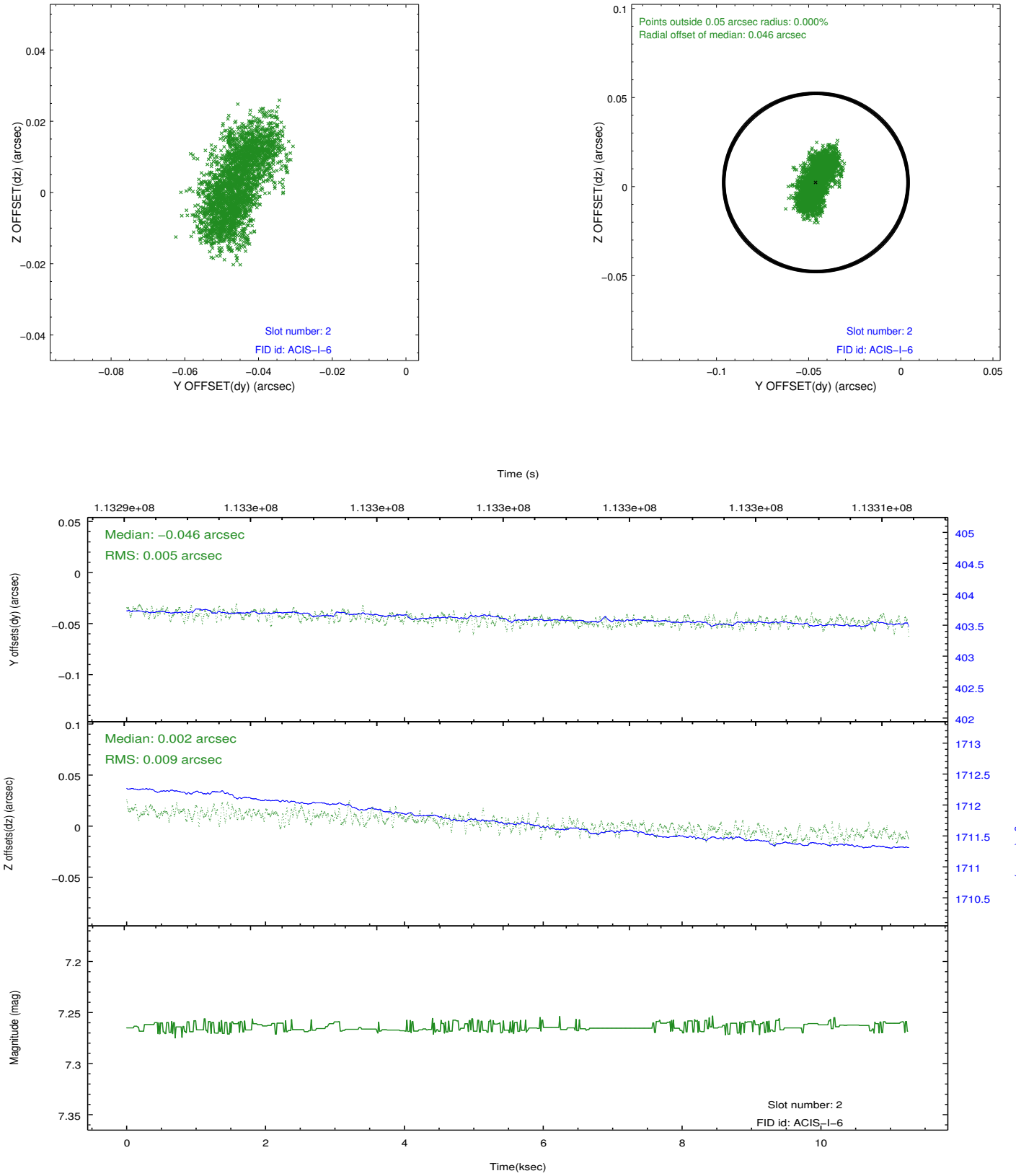
### 2.5.1 Slot 0



## 2.5.2 Slot 1



### 2.5.3 Slot 2



## A Summary

### A.1 Status

V&V Scientist	Jen Lauer
V&V Date (YYYY-MM-DD)	2012.09.24
V&V Edition	1
V&V Disposition and Status	OK
V&V Charge Time	11

### A.2 Comments

Charge time for this ObsId remains at previous value of 11 ks although with the current processing the charge time would have been 11.10 ksec.