

V&V Reference Report

L2 ASCDS Version : 8.4.5

Observation 2181 - L2 Version 3
Chandra X-Ray Center

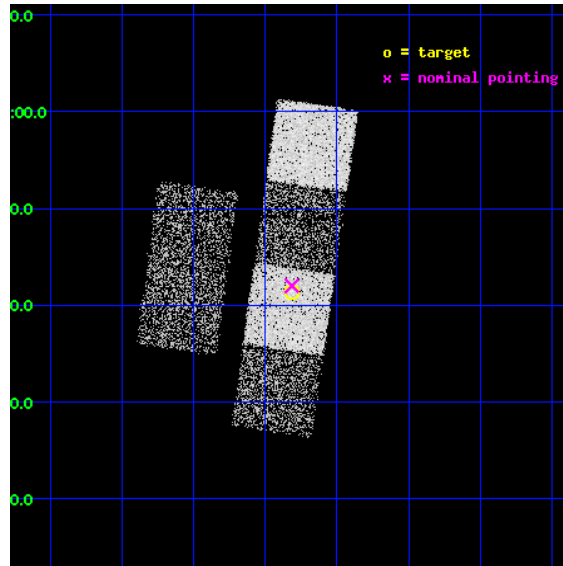
L2 Processing Date : Sep 23 2012

Contents

1	Front	2
2	OBI	3
2.1	OBI	3
2.1.1	Images	3
2.1.2	Bias	3
2.1.3	Parameters	4
2.1.4	Events	4
2.2	Compared Parameters	5
2.3	Aspect	6
2.4	Star Slots	9
2.4.1	Slot 3	9
2.4.2	Slot 4	10
2.4.3	Slot 5	11
2.4.4	Slot 6	12
2.4.5	Slot 7	13
2.5	FID Slots	14
2.5.1	Slot 0	14
2.5.2	Slot 1	15
2.5.3	Slot 2	16
A	Summary	17
A.1	Status	17
A.2	Comments	17

1 Front

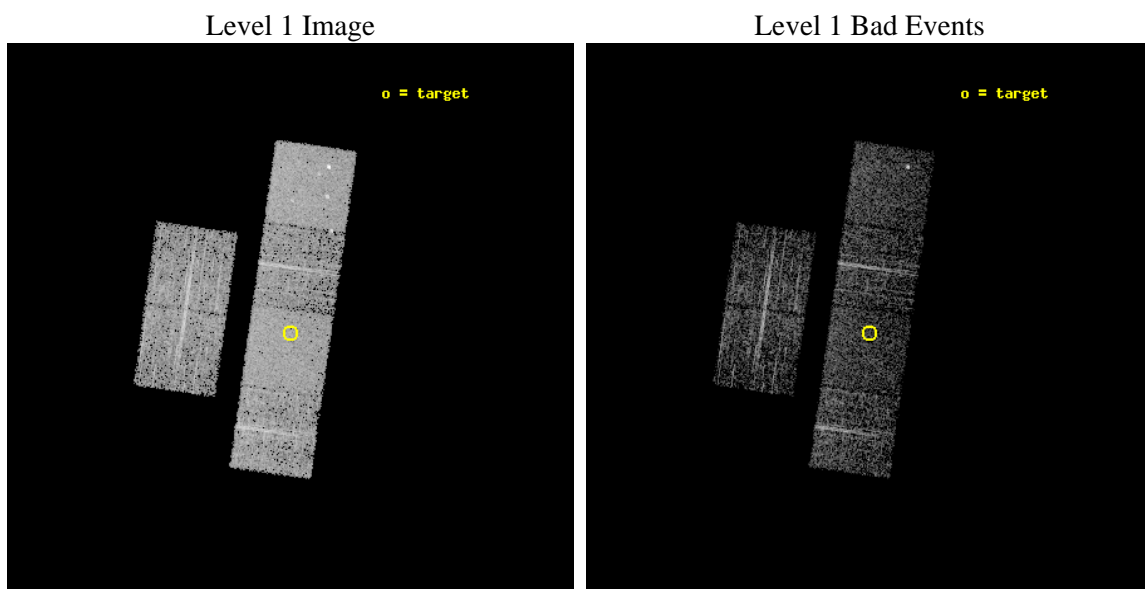
seq_num	700371	Sequence number
obs_id	2181	Observation id
title	SURVEY OF RADIO QUIET Z>4 QUASARS	Proposal title
observer	Dr. Jill Bechtold	Principal investigator
object	SDSS0150+0041	Source name
dtcycle	0	
cycle	P	events from which exps? Prim/Second/Both
ra_targ	27.703333	Observer's specified target RA [deg]
dec_targ	0.690556	Observer's specified target Dec [deg]
ra_nom	27.703626398114	Nominal RA [deg]
dec_nom	0.70026463896431	Nominal Dec [deg]
roll_nom	98.104181422892	Nominal Roll [deg]
revision	3	Processing version of data
ontime	3276.8000030369	Sum of GTIs [s]
livetime	3235.3071883463	Livetime [s]
ontime2	3276.8000030369	Sum of GTIs [s]
ontime3	3276.8000030369	Sum of GTIs [s]
ontime5	3276.8000030369	Sum of GTIs [s]
ontime6	3276.8000030369	Sum of GTIs [s]
ontime7	3276.8000030369	Sum of GTIs [s]
ontime8	3276.8000030369	Sum of GTIs [s]
l2events	31581	Number of level 2 events



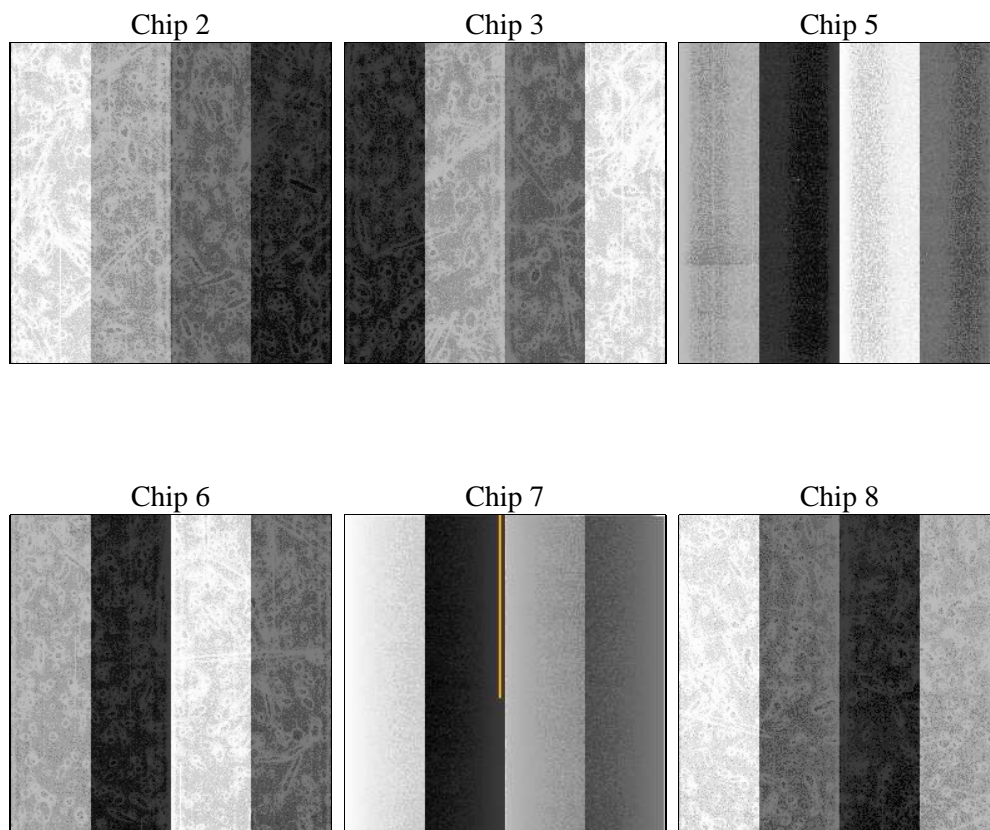
2 OBI

2.1 OBI

2.1.1 Images



2.1.2 Bias



2.1.3 Parameters

obi_num	0	Obi number	sched_exp_time	3315.000000	[s] Scheduled observation exposure time
ascdsver	8.4.5	Processing system revision	ontime	3276.8000030369	Sum of GTIs [s]
caldsver	4.5.1.1	 	ontime2	3276.8000030369	Sum of GTIs [s]
date	2012-09-23T12:56:09	Date and time of file creation	ontime3	3276.8000030369	Sum of GTIs [s]
revision	3	Processing version of data	ontime5	3276.8000030369	Sum of GTIs [s]
			ontime6	3276.8000030369	Sum of GTIs [s]
			ontime7	3276.8000030369	Sum of GTIs [s]
			ontime8	3276.8000030369	Sum of GTIs [s]
			l1events	137188	Number of level 1 events

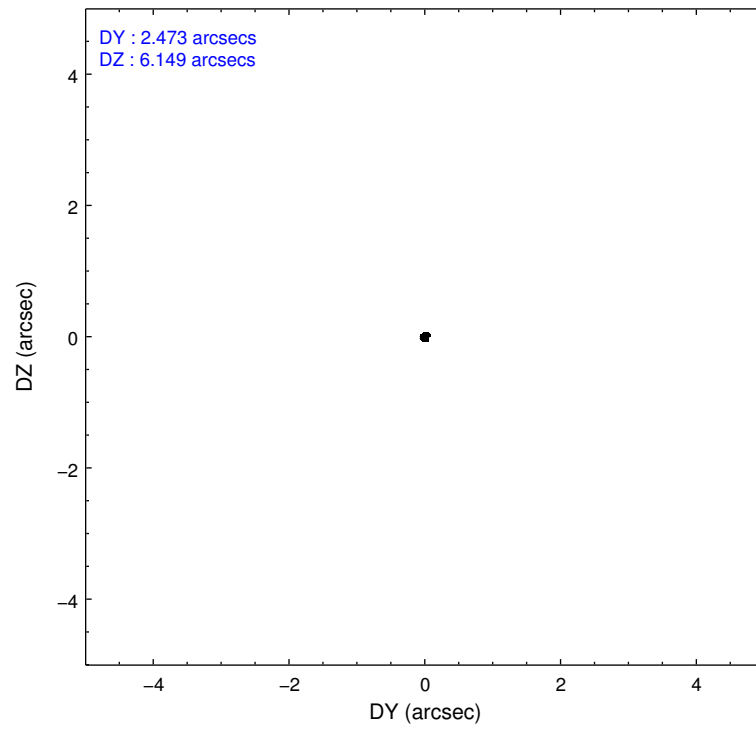
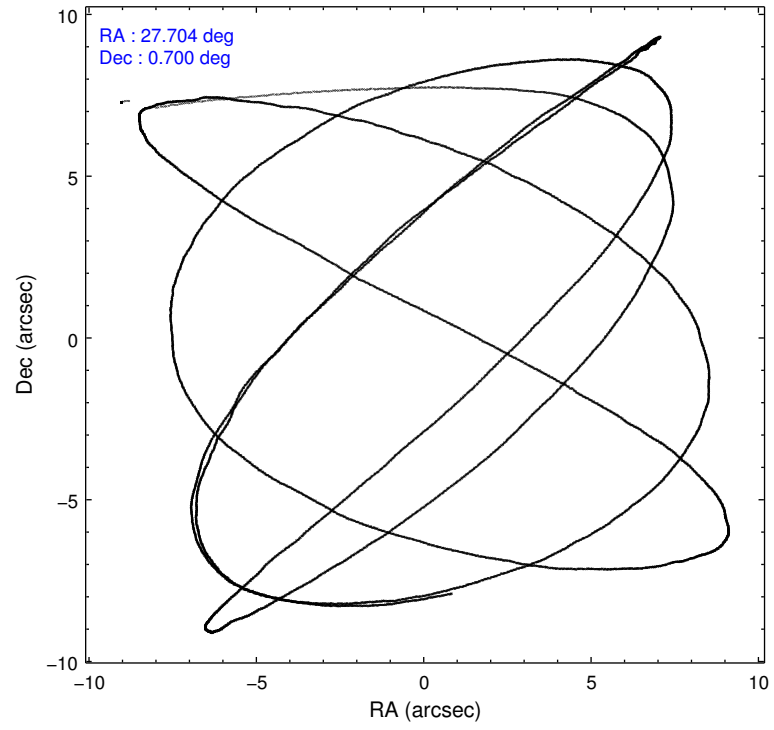
2.1.4 Events

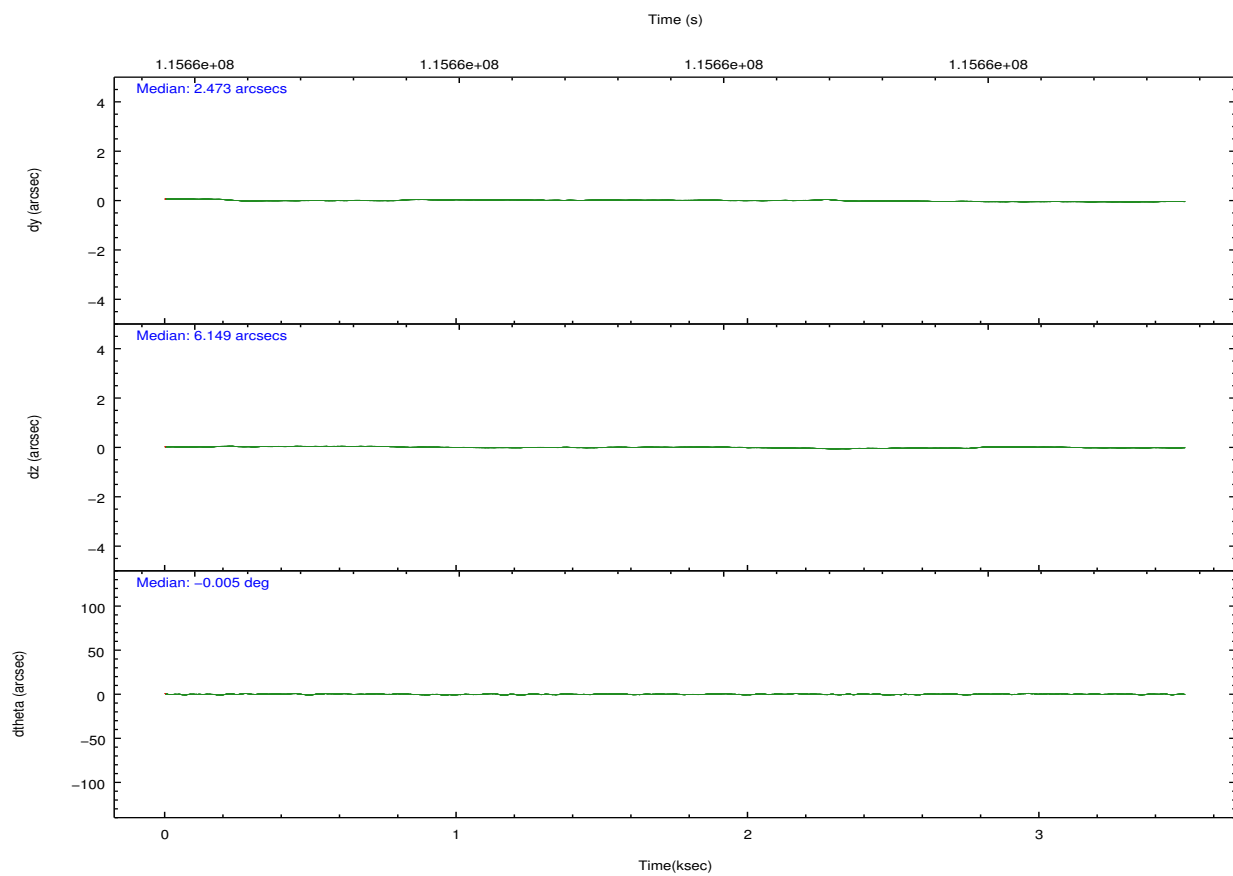
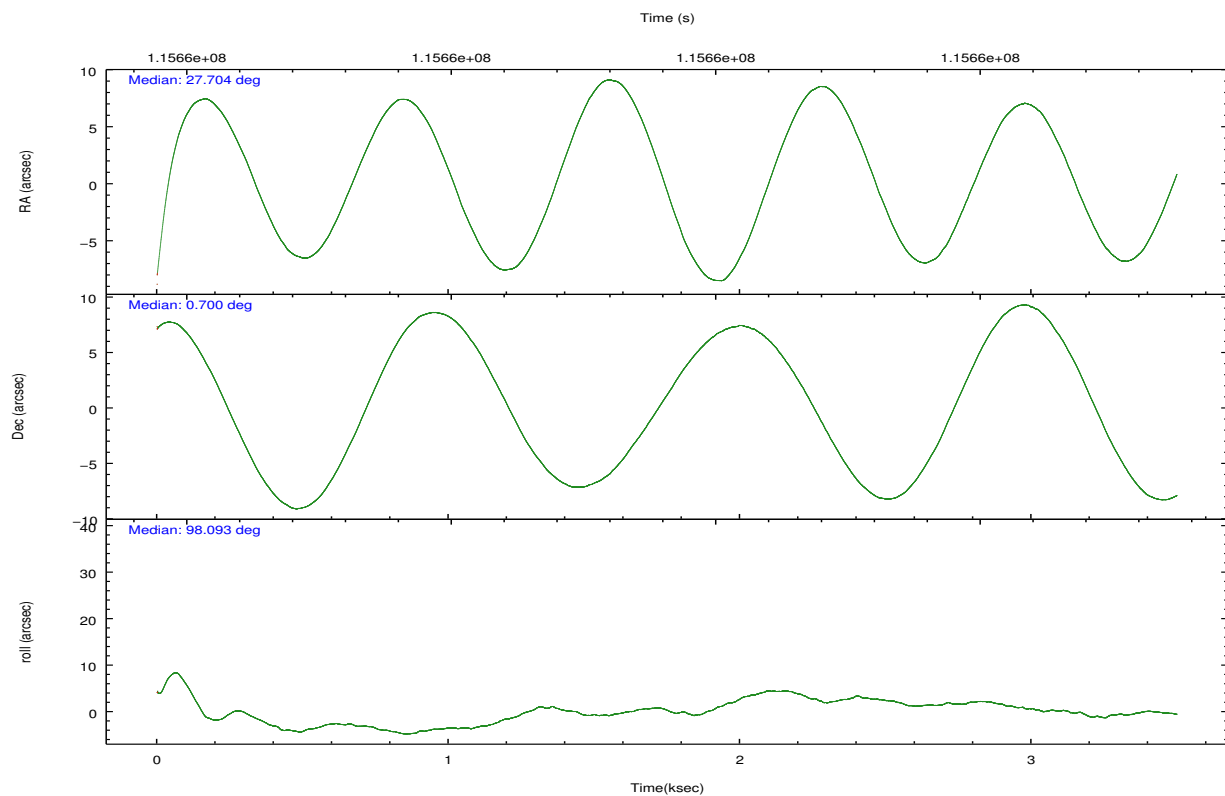
	ccd 2	ccd 3	ccd 5	ccd 6	ccd 7	ccd 8		ccd 2	ccd 3	ccd 5	ccd 6	ccd 7	ccd 8
level 1 events	20321	19485	29099	18704	25737	23842	grade 0 events	873	912	1698	960	1110	1693
rejected events	18196	17284	15207	16416	14265	18703		4%	4%	5%	5%	4%	7%
rejected %	89%	88%	52%	87%	55%	78%	grade 1 events	12	8	55	11	23	14
								0%	0%	0%	0%	0%	0%
							grade 2 events	462	495	4307	484	2172	1043
								2%	2%	14%	2%	8%	4%
							grade 3 events	223	207	570	243	1032	635
								1%	1%	1%	1%	4%	2%
							grade 4 events	180	200	583	197	993	563
								0%	1%	2%	1%	3%	2%
							grade 5 events	710	743	2235	806	2324	1035
								3%	3%	7%	4%	9%	4%
							grade 6 events	388	395	6770	410	6184	1208
								1%	2%	23%	2%	24%	5%
							grade 7 events	17473	16525	12881	15593	11899	17651
								85%	84%	44%	83%	46%	74%

2.2 Compared Parameters

Parameter	Planned	Actual	Parameter	Planned	Actual
Instrument	ACIS	ACIS	Obspar format version number	7	7
Detector	ACIS-235678	ACIS-235678	Obspar file type	PREDICTED	ACTUAL
Grating	NONE	NONE	Obspar update status	NONE	UPDATED
Data mode	FAINT	FAINT	Number of optional ACIS chips dropped	0	0
Observation mode	POINTING	POINTING	On-chip summing requested	N	N
[deg] Pointing RA	27.720768	27.70362639811381	Subarray requested	NONE	NONE
[deg] Pointing Dec	0.679022	0.7002646389643121	Alternating exposures requested	N	N
[deg] Pointing Roll	97.947355	98.10418142289215	[s] Primary exposure time	0.000000	3.2
[mm] SIM focus pos	-0.684267	-0.6828225247311905			
[mm] SIM defocus	0	0.001444936568705701			
[mm] SIM translation stage pos	-190.132523	-190.1425803651734			
[mm] SIM translation stage offset	0	0.01005778216563158			
[s] Observation start time (MET)	115658251.184000	115657282.82837			
Observation start date	2001-08-31T15:16:27	2001-08-31T15:01:22			
[s] Observation end time (MET)	115661566.184000	115662164.39107			
Observation end date	2001-08-31T16:11:42	2001-08-31T16:22:44			
Read mode	TIMED	TIMED			

2.3 Aspect



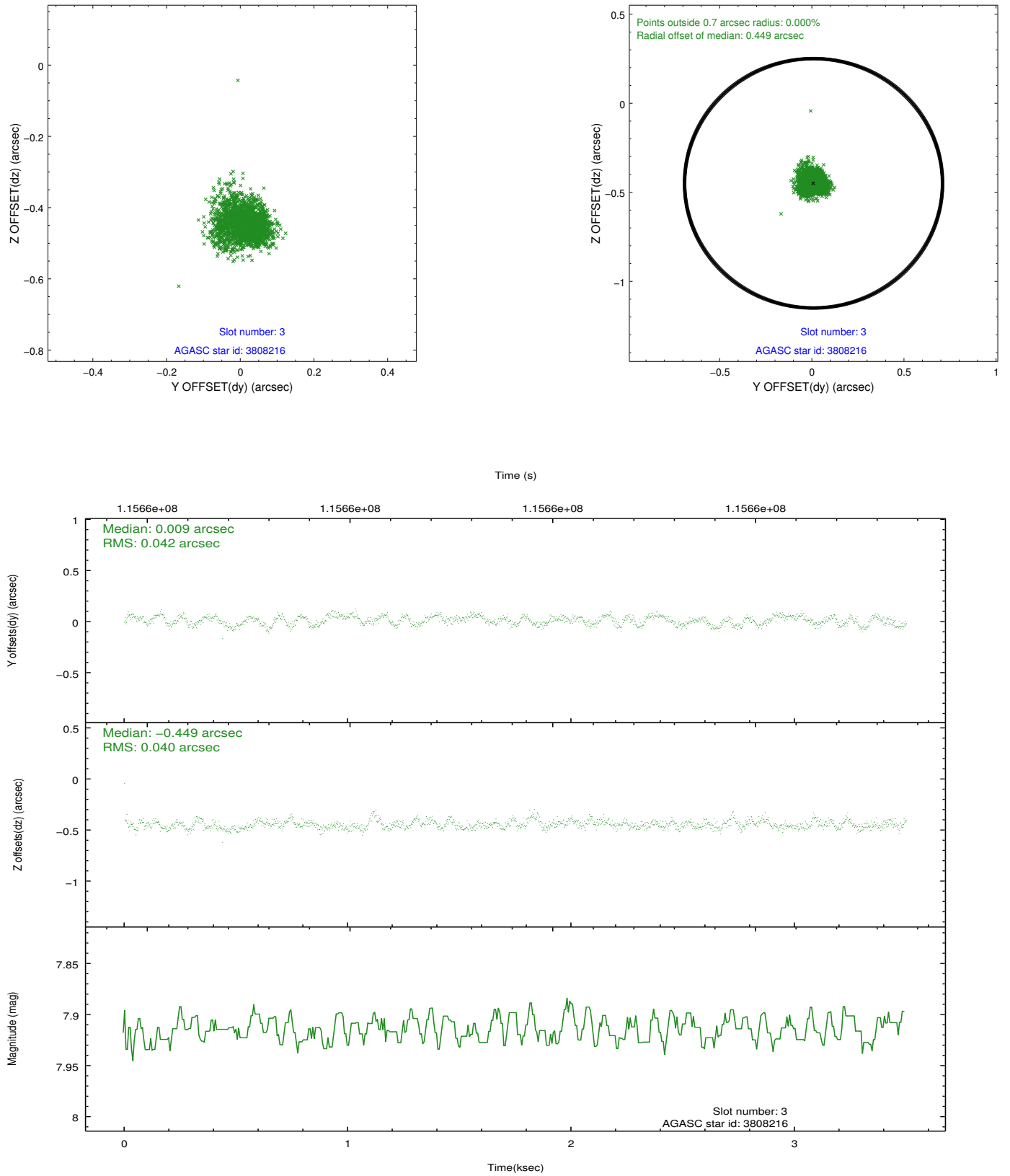


Slot Statistics

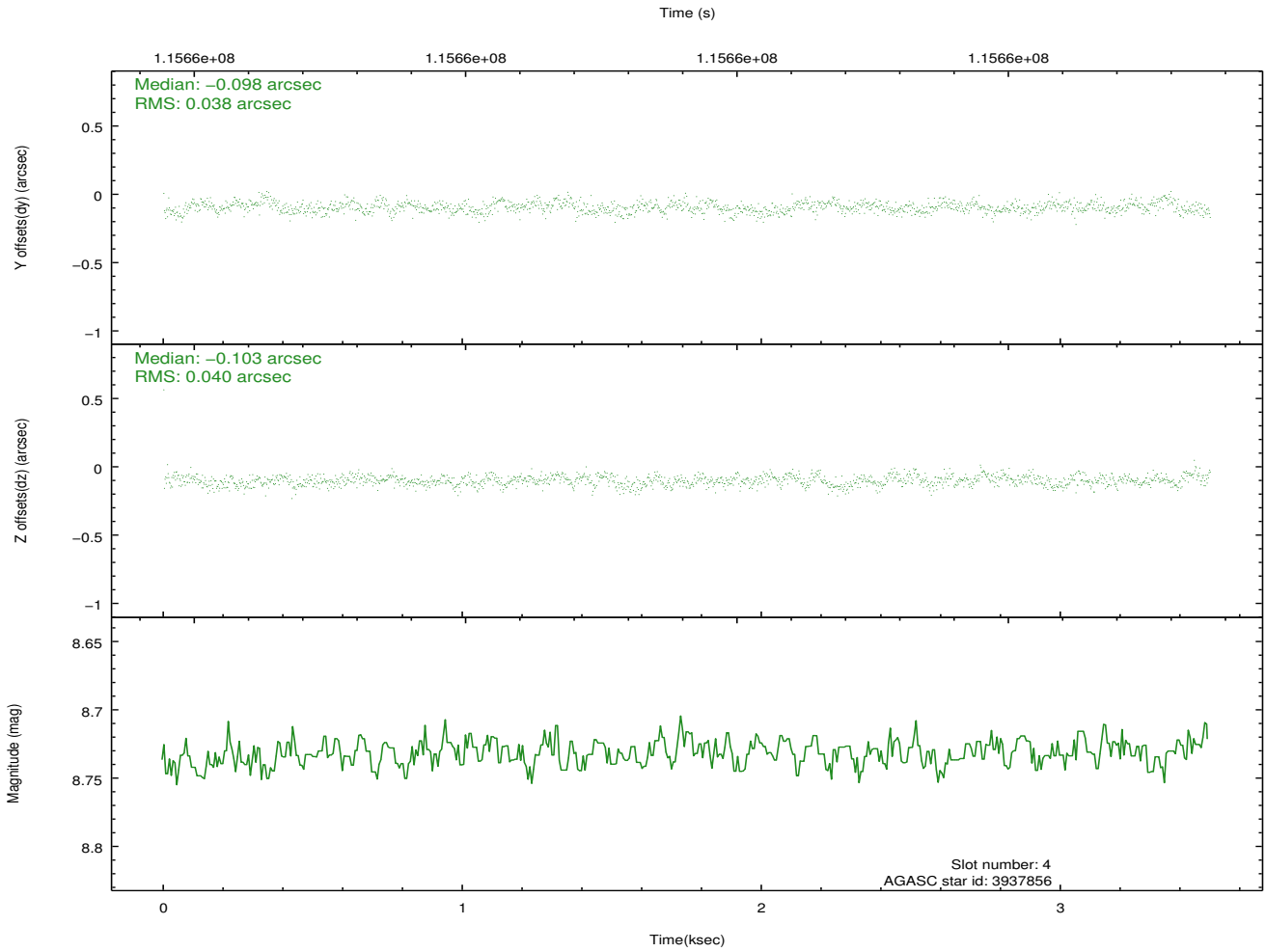
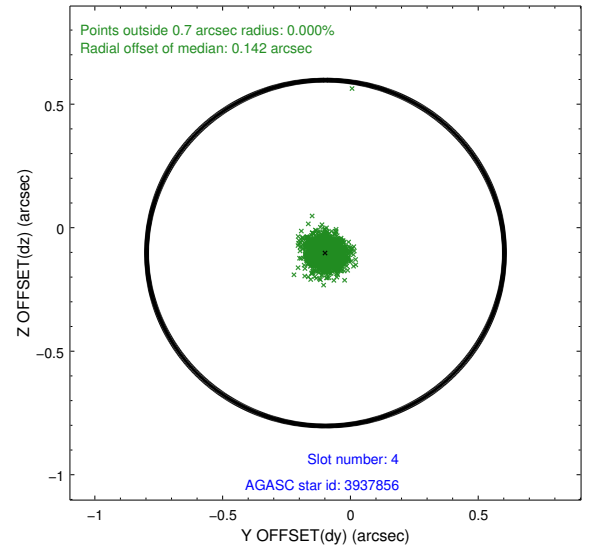
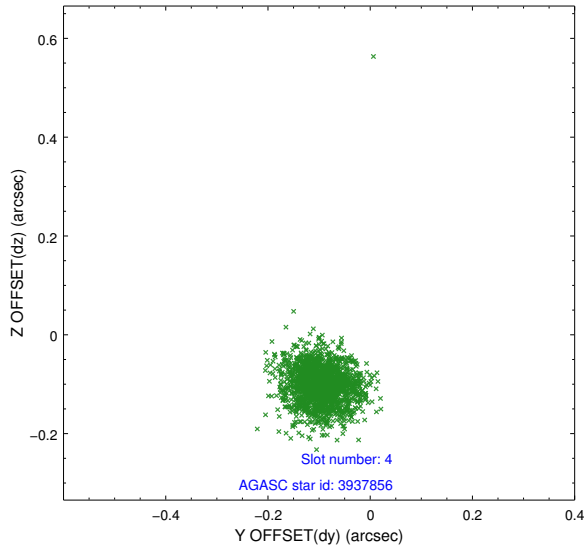
slot	status	id	mag	n_pts	med_dy	med_dz	dr1	dr2	ra	dec	mean_y	mean_z
0	FID	ACIS-S-2	7.11	854	-0.032	0.013	0.007	0.012	0.000000	0.000000	-755.09	-1727.24
1	FID	ACIS-S-4	7.20	854	-0.048	0.012	0.007	0.014	0.000000	0.000000	2157.31	179.44
2	FID	ACIS-S-5	7.23	854	0.049	-0.017	0.007	0.012	0.000000	0.000000	-1805.57	175.05
3	GUIDE	3808216	7.91	1708	0.009	-0.449	0.061	0.094	27.071052	0.452147	-484.67	2429.70
4	GUIDE	3937856	8.73	1708	-0.098	-0.103	0.057	0.092	27.502239	0.986318	1205.06	628.53
5	GUIDE	3936880	9.90	1707	-0.091	0.121	0.111	0.185	27.927876	1.218820	1823.48	-1005.19
6	GUIDE	3933736	8.63	1708	0.057	0.230	0.082	0.127	28.335603	0.387418	-1342.98	-2046.69
7	GUIDE	3932304	10.24	1706	0.122	0.199	0.114	0.190	27.757003	0.587644	-343.33	-83.85

2.4 Star Slots

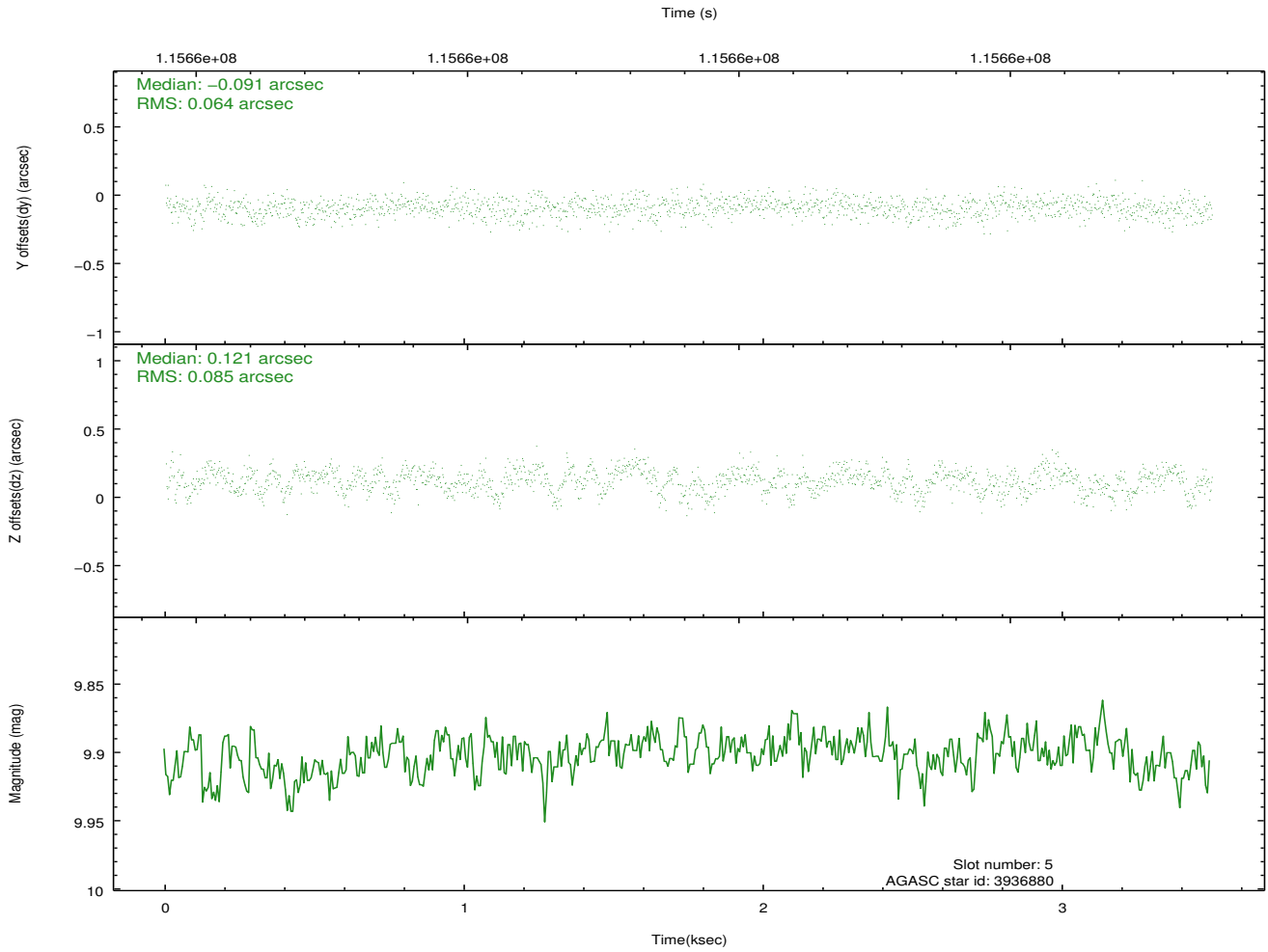
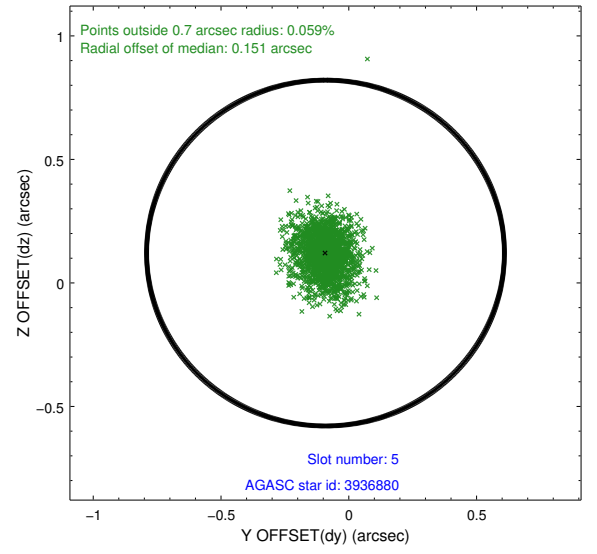
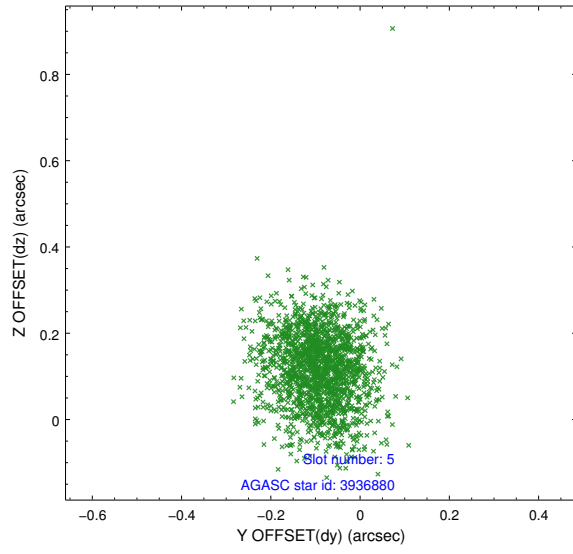
2.4.1 Slot 3



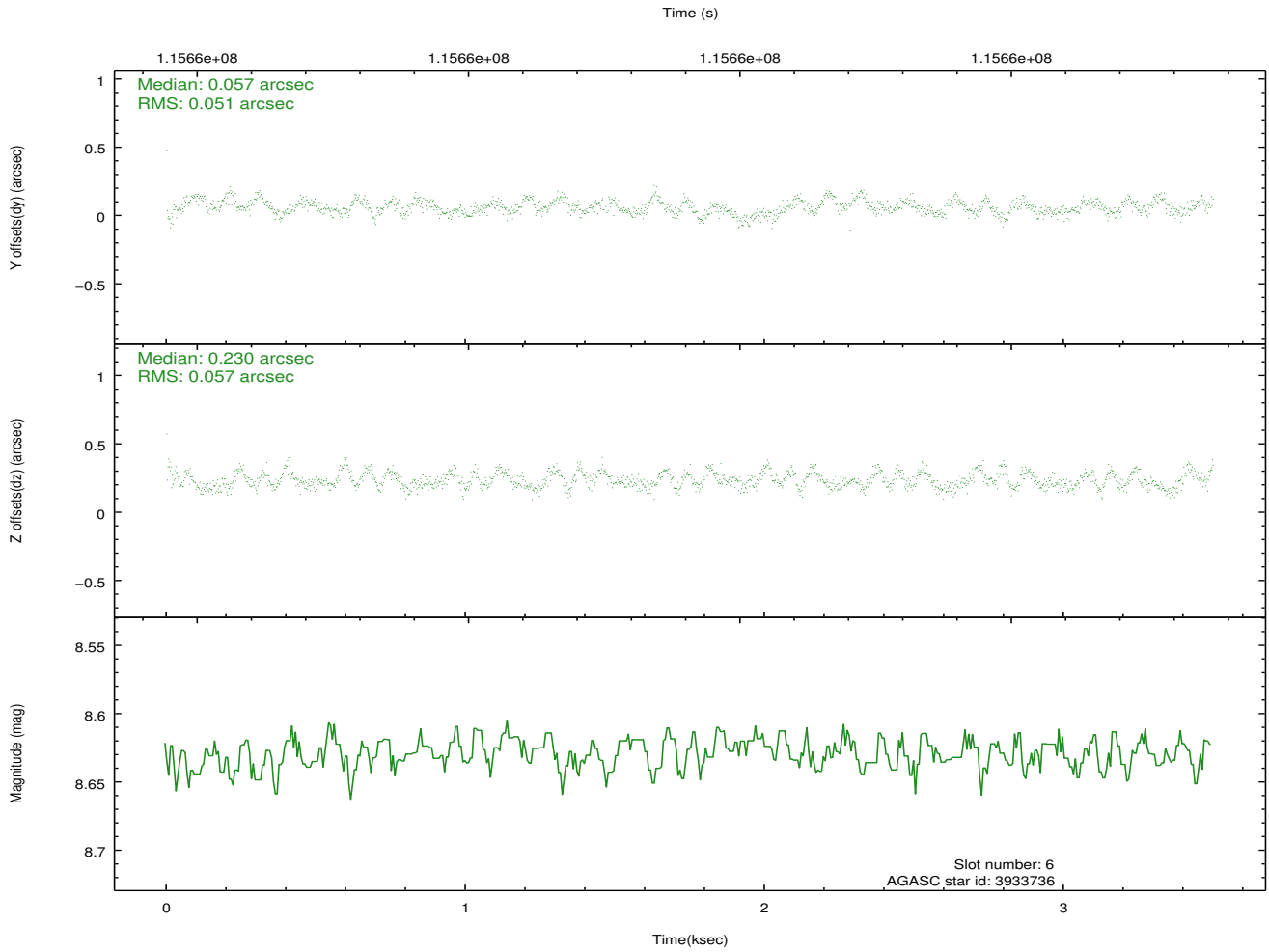
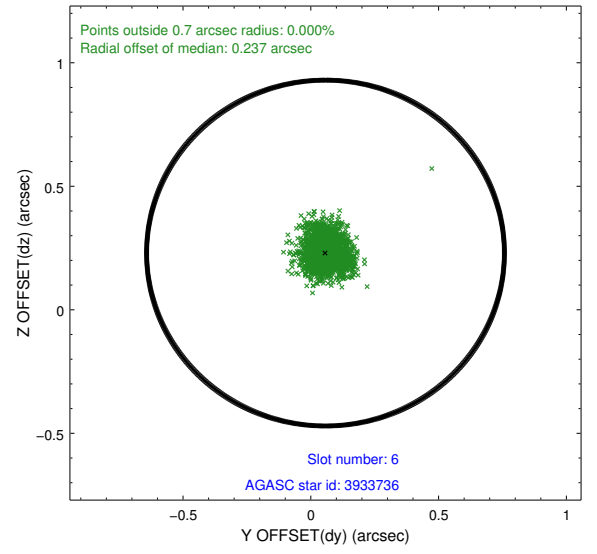
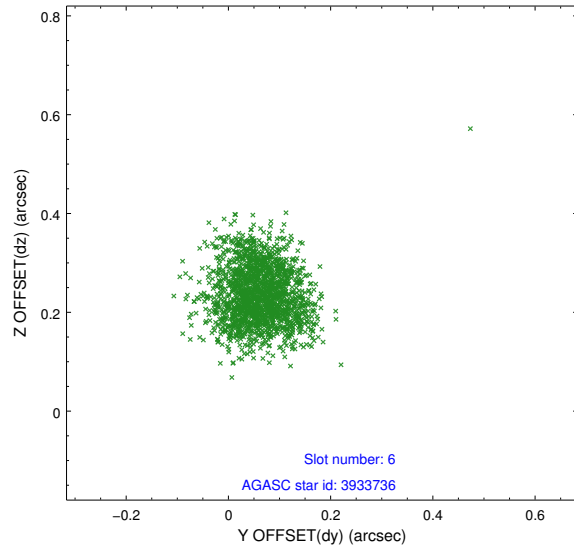
2.4.2 Slot 4



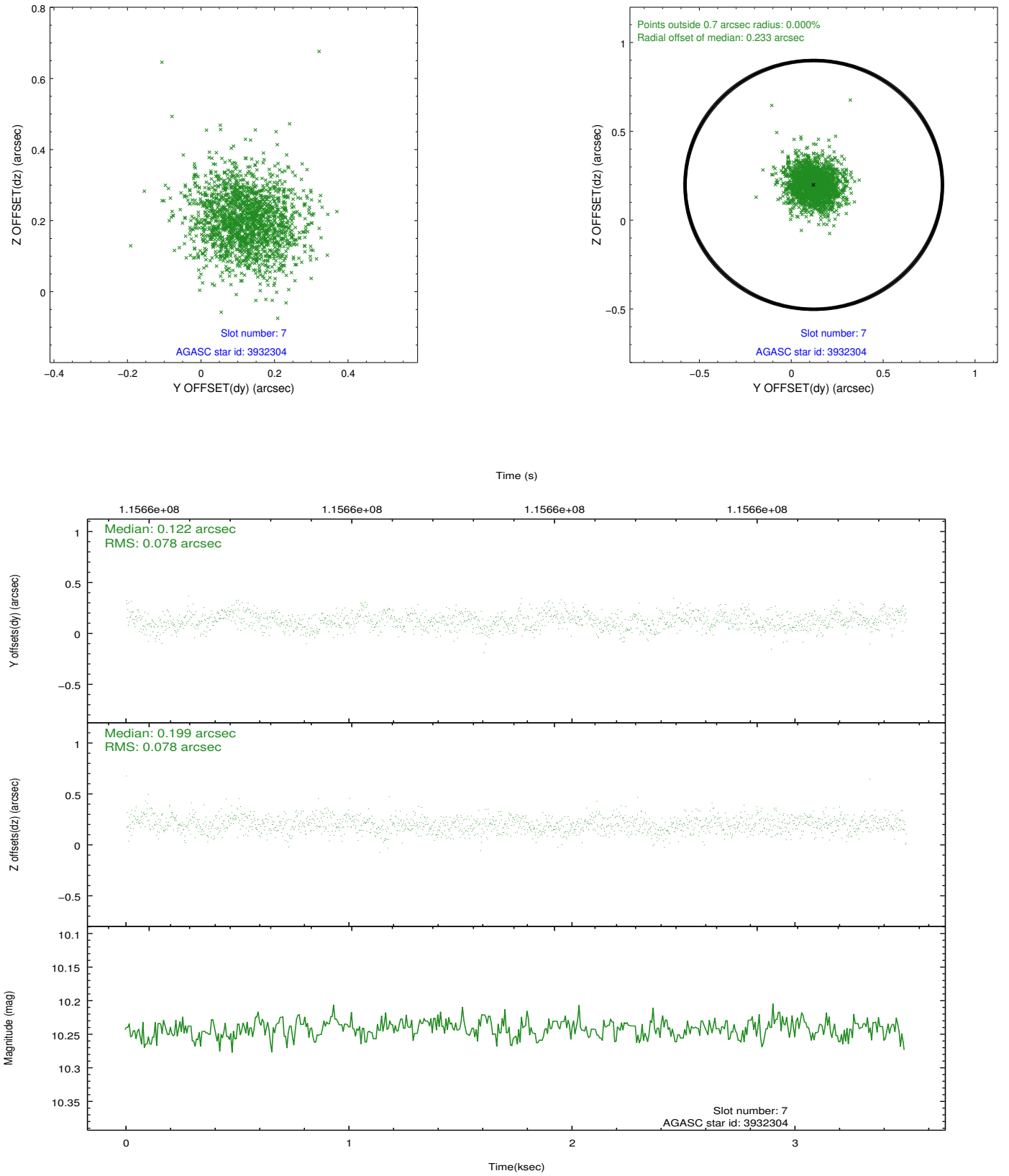
2.4.3 Slot 5



2.4.4 Slot 6

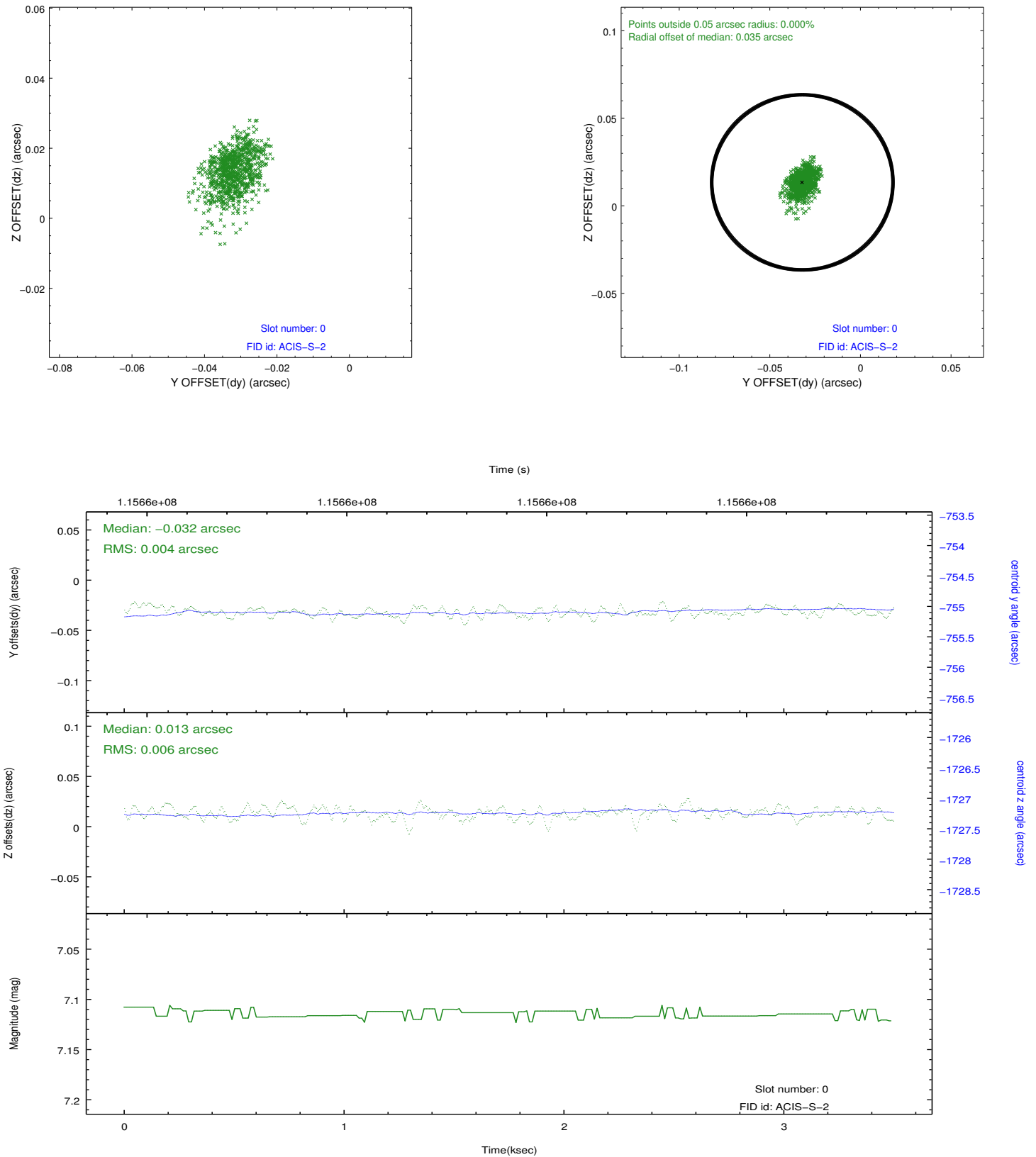


2.4.5 Slot 7

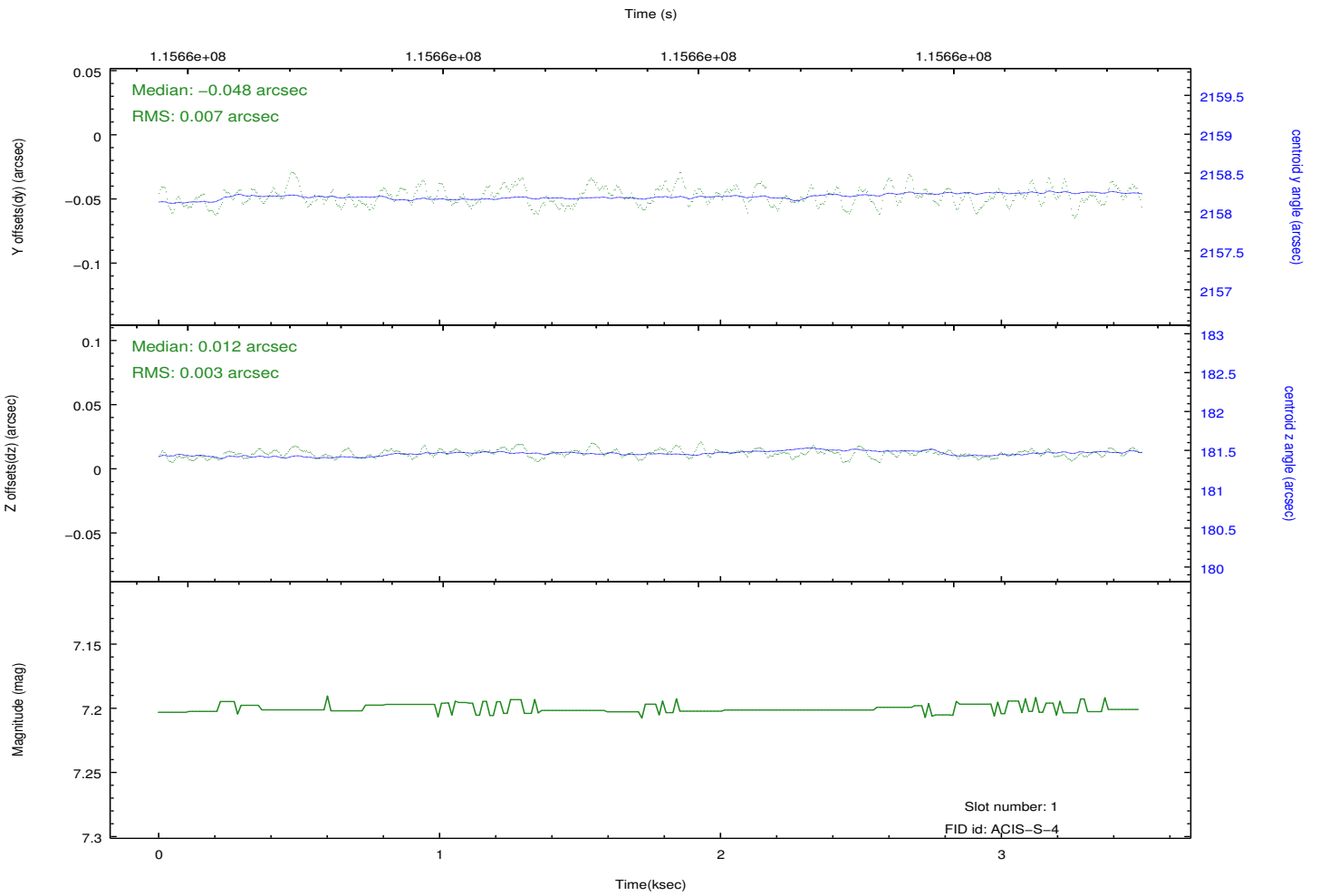
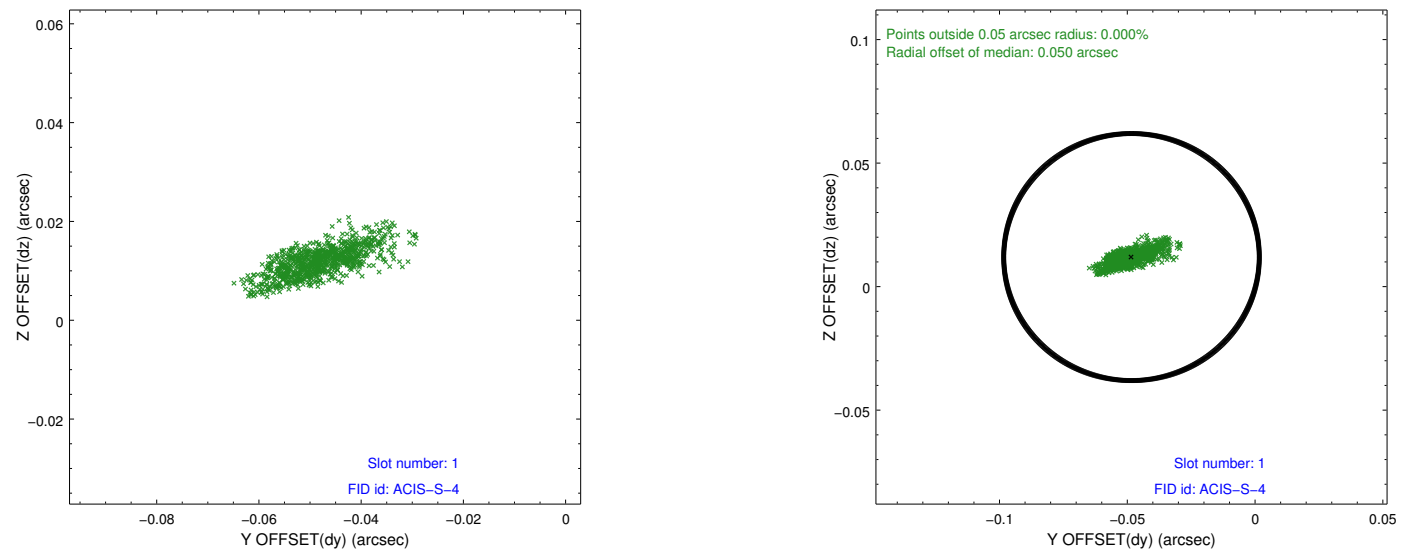


2.5 FID Slots

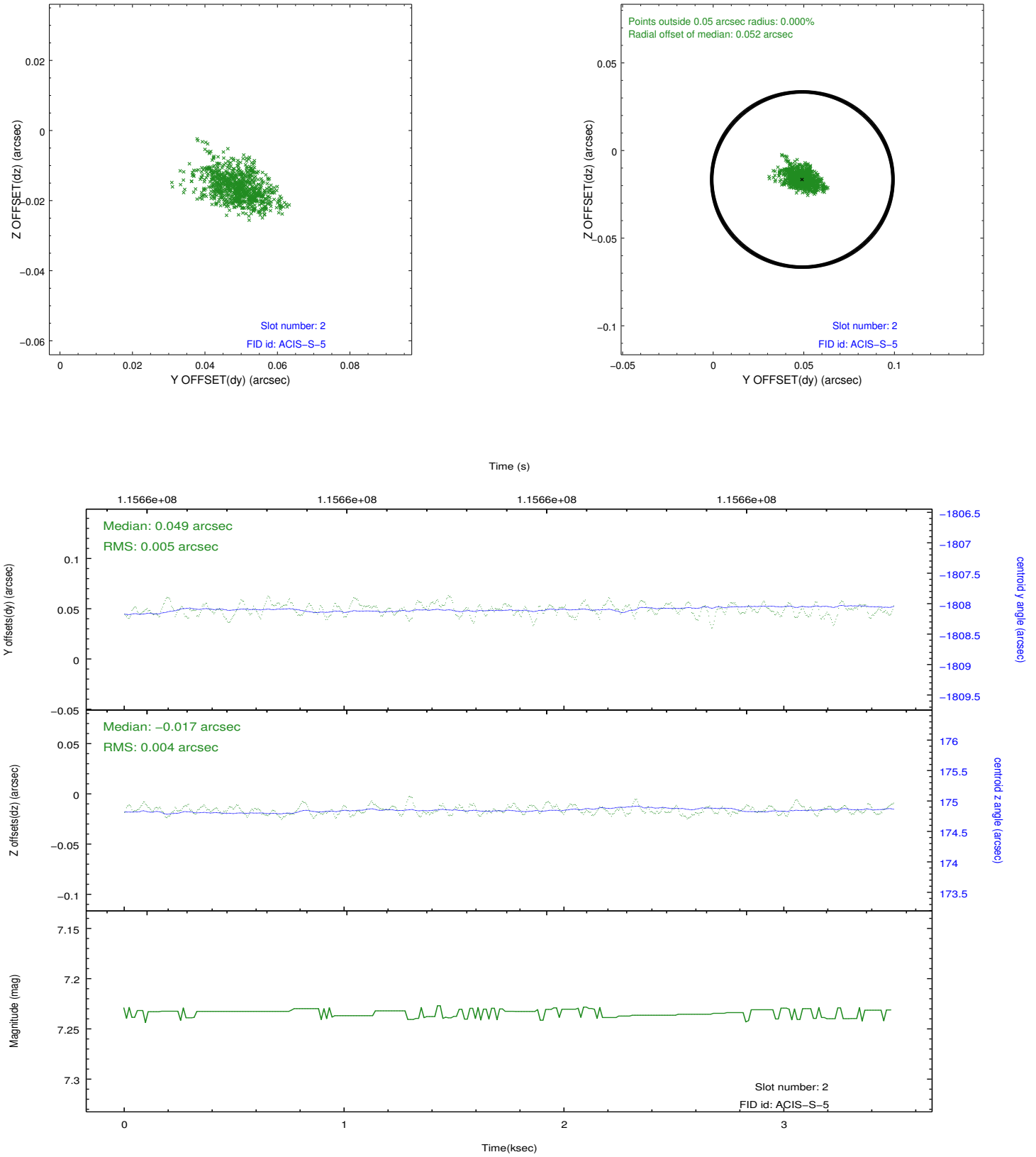
2.5.1 Slot 0



2.5.2 Slot 1



2.5.3 Slot 2



A Summary

A.1 Status

V&V Scientist	Jen Lauer
V&V Date (YYYY-MM-DD)	2012.09.26
V&V Edition	1
V&V Disposition and Status	OK
V&V Charge Time	3.28

A.2 Comments