

V&V Reference Report

L2 ASCDS Version : 8.4.5

Observation 2151 - L2 Version 3
Chandra X-Ray Center

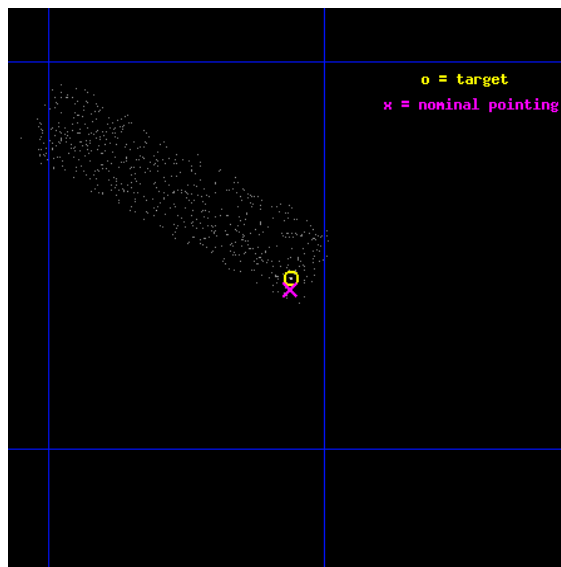
L2 Processing Date : Sep 6 2012

Contents

1	Front	2
2	OBI	3
2.1	OBI	3
2.1.1	Images	3
2.1.2	Bias	3
2.1.3	Parameters	4
2.1.4	Events	4
2.2	Compared Parameters	5
2.3	Aspect	6
2.4	Star Slots	9
2.4.1	Slot 3	9
2.4.2	Slot 4	10
2.4.3	Slot 5	11
2.4.4	Slot 6	12
2.4.5	Slot 7	13
2.5	FID Slots	14
2.5.1	Slot 0	14
2.5.2	Slot 1	15
2.5.3	Slot 2	16
A	Summary	17
A.1	Status	17
A.2	Comments	17

1 Front

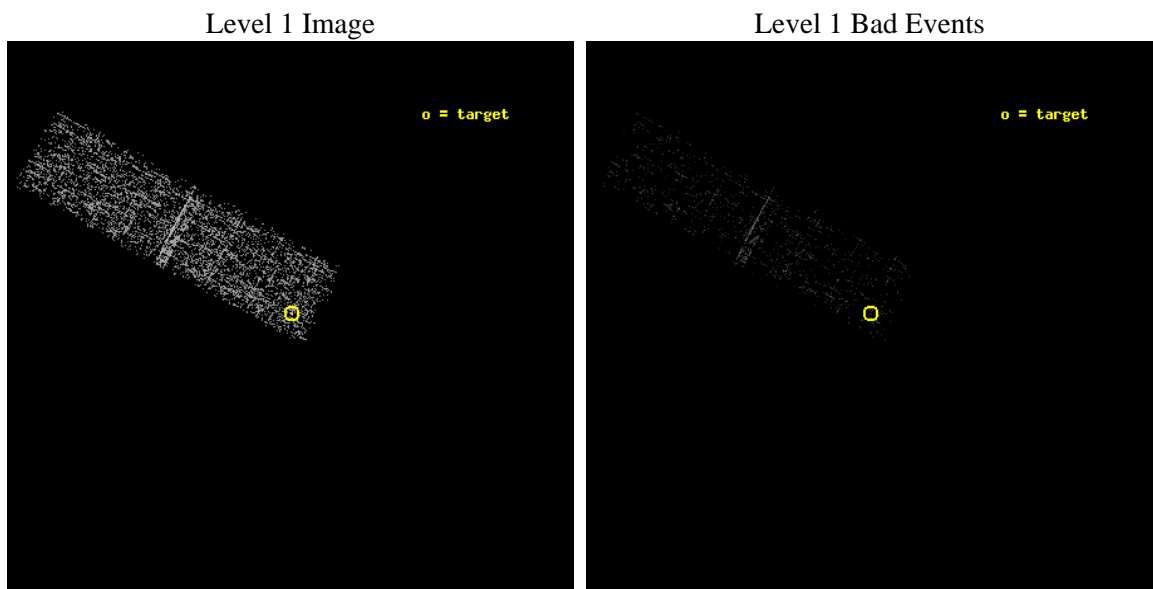
seq_num	700341	Sequence number
obs_id	2151	Observation id
title	RED QUASARS AND THE X-RAY BACKGROUND	Proposal title
observer	Dr. Belinda Wilkes	Principal investigator
object	2MASSJ000703+1554	Source name
dtcycle	0	
cycle	P	events from which exps? Prim/Second/Both
ra_targ	1.765	Observer's specified target RA [deg]
dec_targ	15.906611	Observer's specified target Dec [deg]
ra_nom	1.7656301541557	Nominal RA [deg]
dec_nom	15.901686982202	Nominal Dec [deg]
roll_nom	298.88724095886	Nominal Roll [deg]
revision	3	Processing version of data
ontime	3532.7999868542	Sum of GTIs [s]
livetime	3360.4109073092	Livetime [s]
ontime3	3532.7999868542	Sum of GTIs [s]
l2events	725	Number of level 2 events



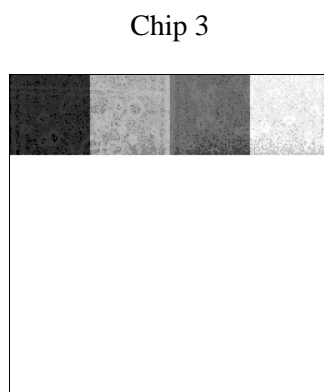
2 OBI

2.1 OBI

2.1.1 Images



2.1.2 Bias



2.1.3 Parameters

obi_num	0	Obi number	sched_exp_time	3100.000000	[s] Scheduled observation exposure time
ascdsver	8.4.5	Processing system revision	ontime	3532.7999868542	Sum of GTIs [s]
caldsver	4.5.1.1	 	ontime3	3532.7999868542	Sum of GTIs [s]
date	2012-09-06T11:22:23	Date and time of file creation	l1events	8318	Number of level 1 events
revision	3	Processing version of data			

2.1.4 Events

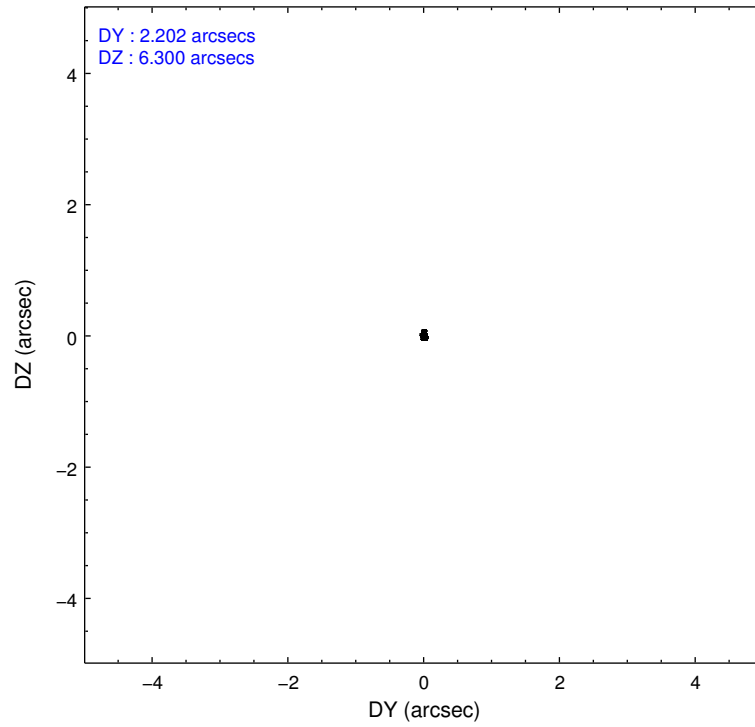
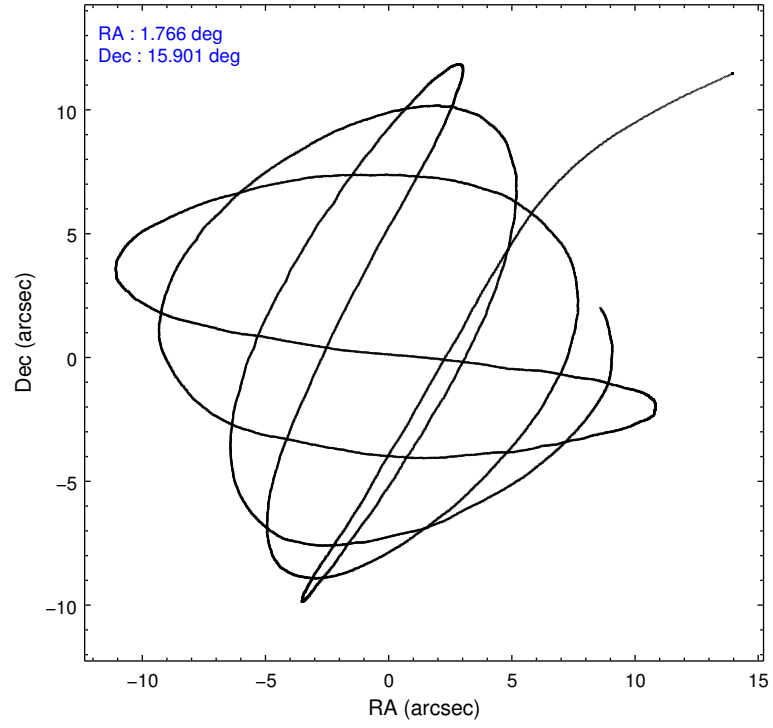
	ccd 3
level 1 events	8318
rejected events	7472
rejected %	89%

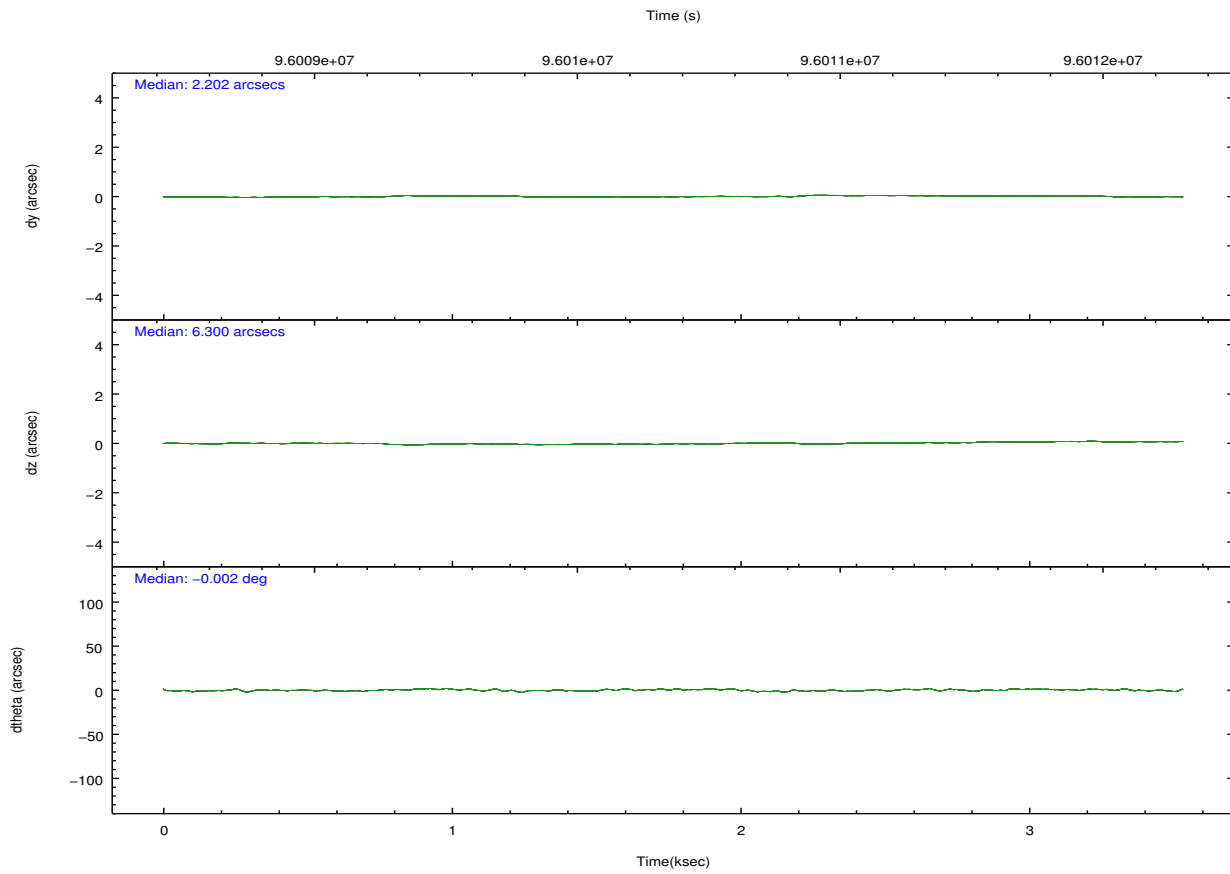
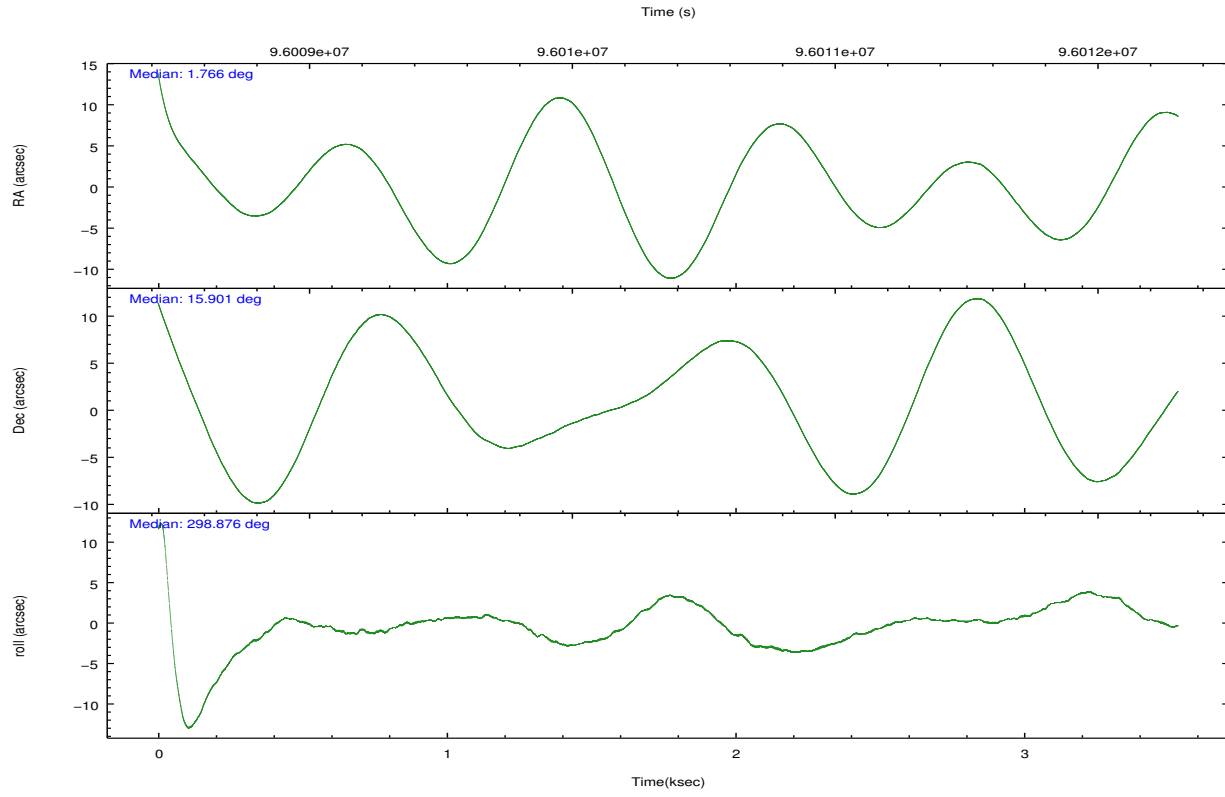
	ccd 3
grade 0 events	375
	4%
grade 1 events	2
	0%
grade 2 events	188
	2%
grade 3 events	129
	1%
grade 4 events	123
	1%
grade 5 events	227
	2%
grade 6 events	136
	1%
grade 7 events	7138
	85%

2.2 Compared Parameters

Parameter	Planned	Actual	Parameter	Planned	Actual
Instrument	ACIS	ACIS	Obspar format version number	7	7
Detector	ACIS-3	ACIS-3	Obspar file type	PREDICTED	ACTUAL
Grating	NONE	NONE	Obspar update status	NONE	UPDATED
Data mode	VFAINT	VFAINT	Number of optional ACIS chips dropped	0	0
Observation mode	POINTING	POINTING	On-chip summing requested	N	N
[deg] Pointing RA	1.741059	1.765630154155673	Subarray requested	CUSTOM	1/4
[deg] Pointing Dec	15.916048	15.90168698220212	Subarray start row	769	769
[deg] Pointing Roll	298.685194	298.8872409588603	Subarray row count	256	256
[mm] SIM focus pos	-0.782348	-0.7809083437167272	Alternating exposures requested	N	N
[mm] SIM defocus	0	0.001439871863259334	[s] Primary exposure time	0.000000	0.8
[mm] SIM translation stage pos	-233.592463	-233.5874344608287			
[mm] SIM translation stage offset	0	-0.005018542100998502			
[s] Observation start time (MET)	96009031.184000	96007949.039157			
Observation start date	2001-01-16T05:09:27	2001-01-16T04:52:29			
[s] Observation end time (MET)	96012131.184000	96012404.71432801			
Observation end date	2001-01-16T06:01:07	2001-01-16T06:06:44			
Read mode	TIMED	TIMED			

2.3 Aspect



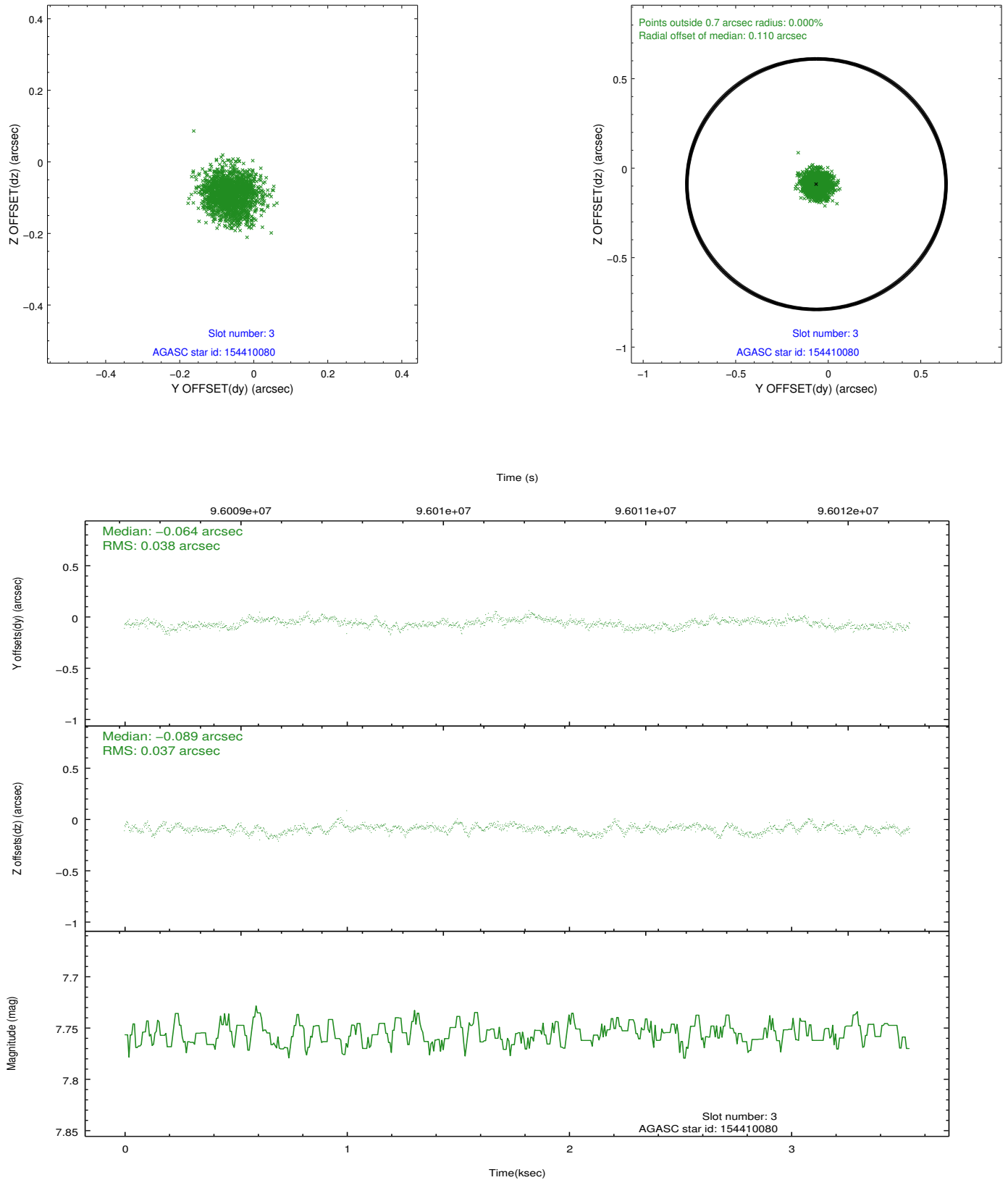


Slot Statistics

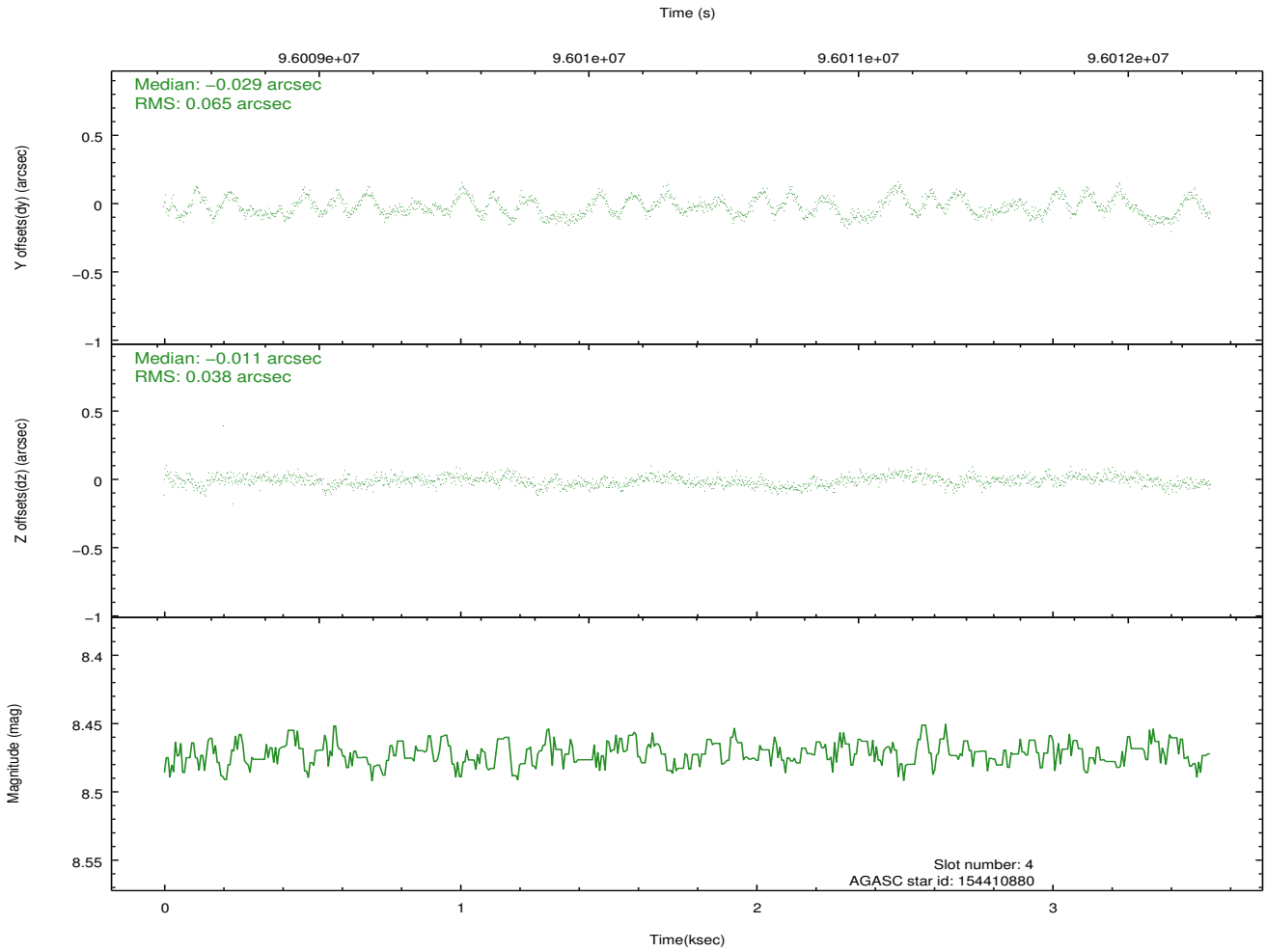
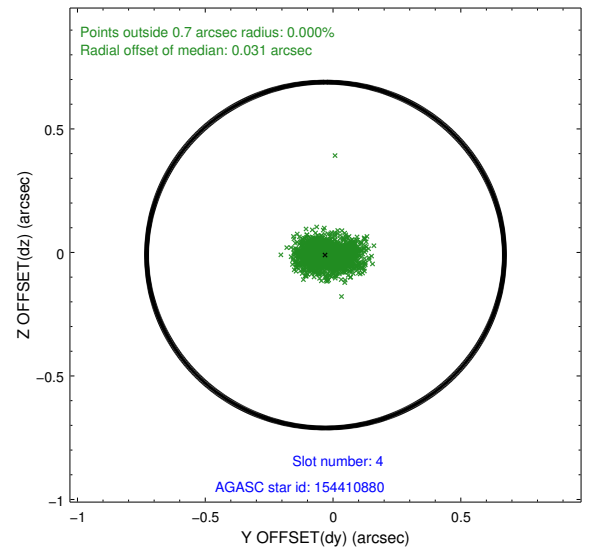
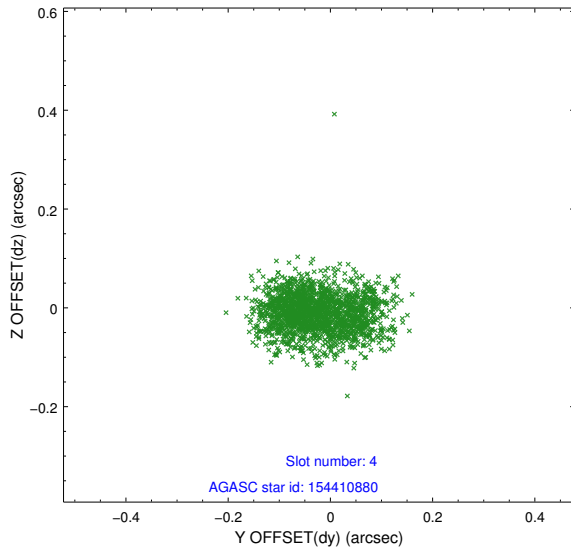
slot	status	id	mag	n_pts	med_dy	med_dz	dr1	dr2	ra	dec	mean_y	mean_z
0	FID	ACIS-I-2	7.15	862	-0.022	-0.052	0.012	0.021	0.000000	0.000000	-756.59	-836.09
1	FID	ACIS-I-4	7.18	862	-0.041	0.035	0.007	0.015	0.000000	0.000000	2156.65	1069.26
2	FID	ACIS-I-5	7.22	862	-0.038	0.085	0.013	0.023	0.000000	0.000000	-1808.12	1069.21
3	GUIDE	154410080	7.76	1725	-0.064	-0.089	0.058	0.092	1.504405	16.452074	-2087.11	208.77
4	GUIDE	154410880	8.47	1725	-0.029	-0.011	0.080	0.127	2.033552	16.571937	-1590.78	2018.53
5	GUIDE	154409648	8.83	1725	0.083	-0.148	0.076	0.120	1.120655	15.768216	-569.58	-2139.07
6	GUIDE	154405872	10.01	1724	-0.013	0.221	0.149	0.246	1.884606	16.712134	-2278.99	1808.12
7	GUIDE	154409024	8.78	1723	0.015	0.039	0.138	0.223	1.351247	16.329004	-1954.43	-466.95

2.4 Star Slots

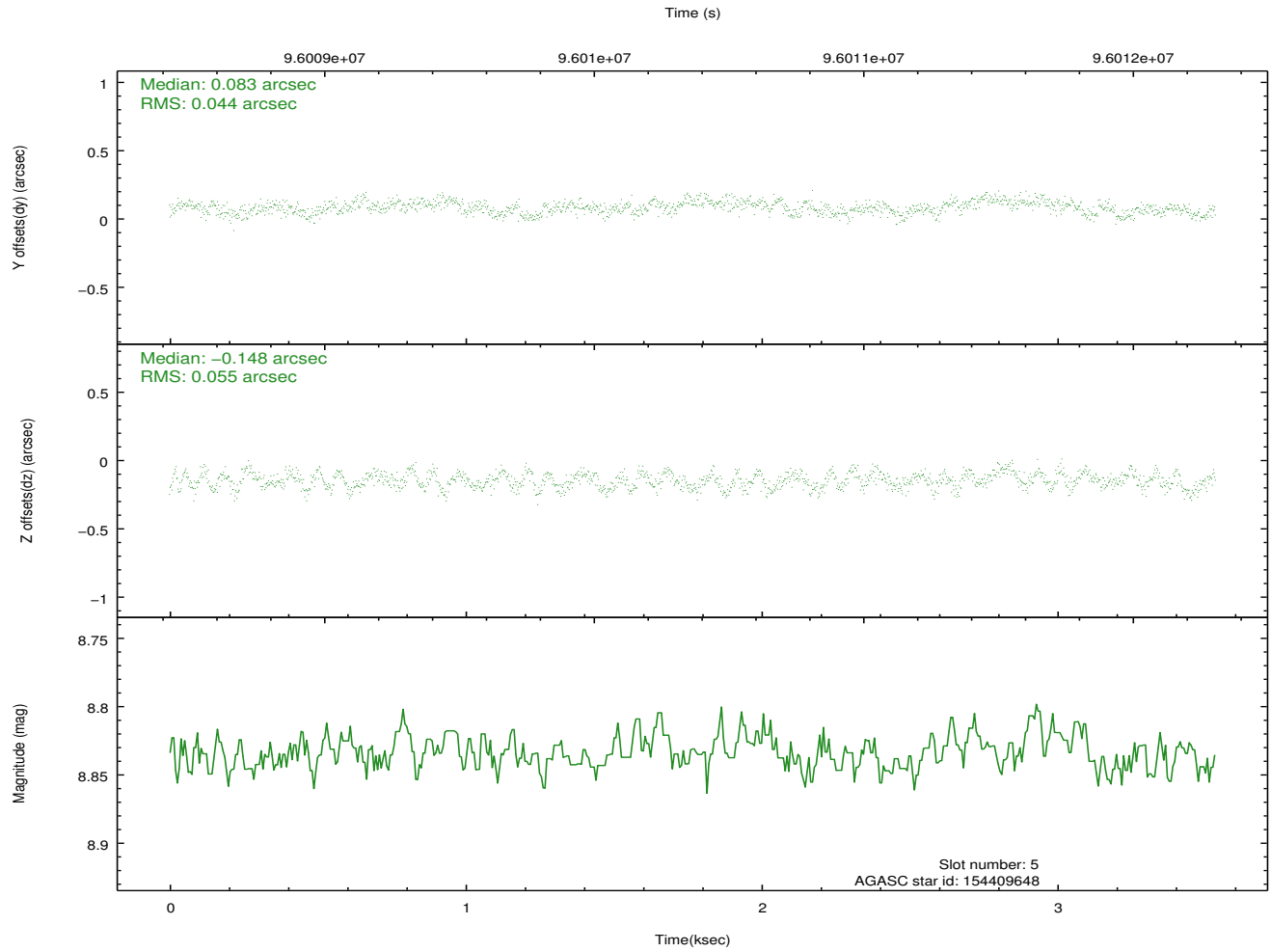
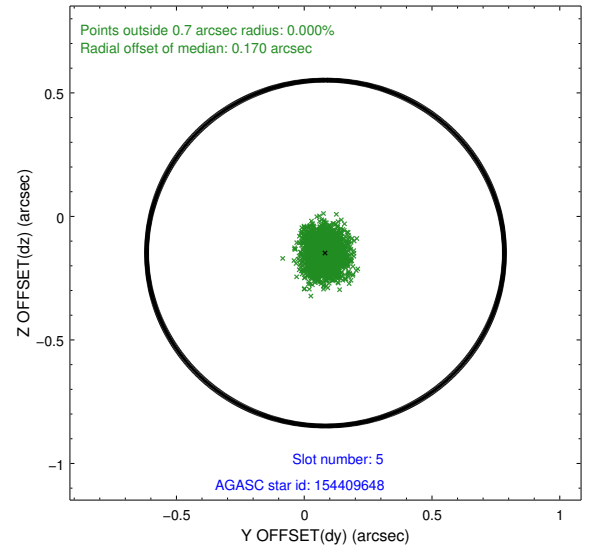
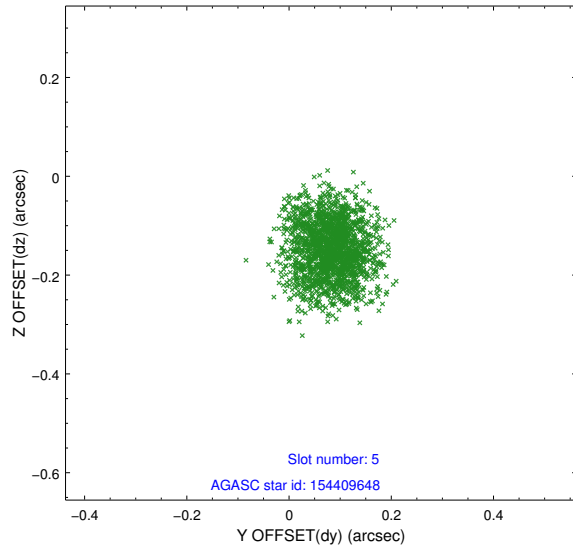
2.4.1 Slot 3



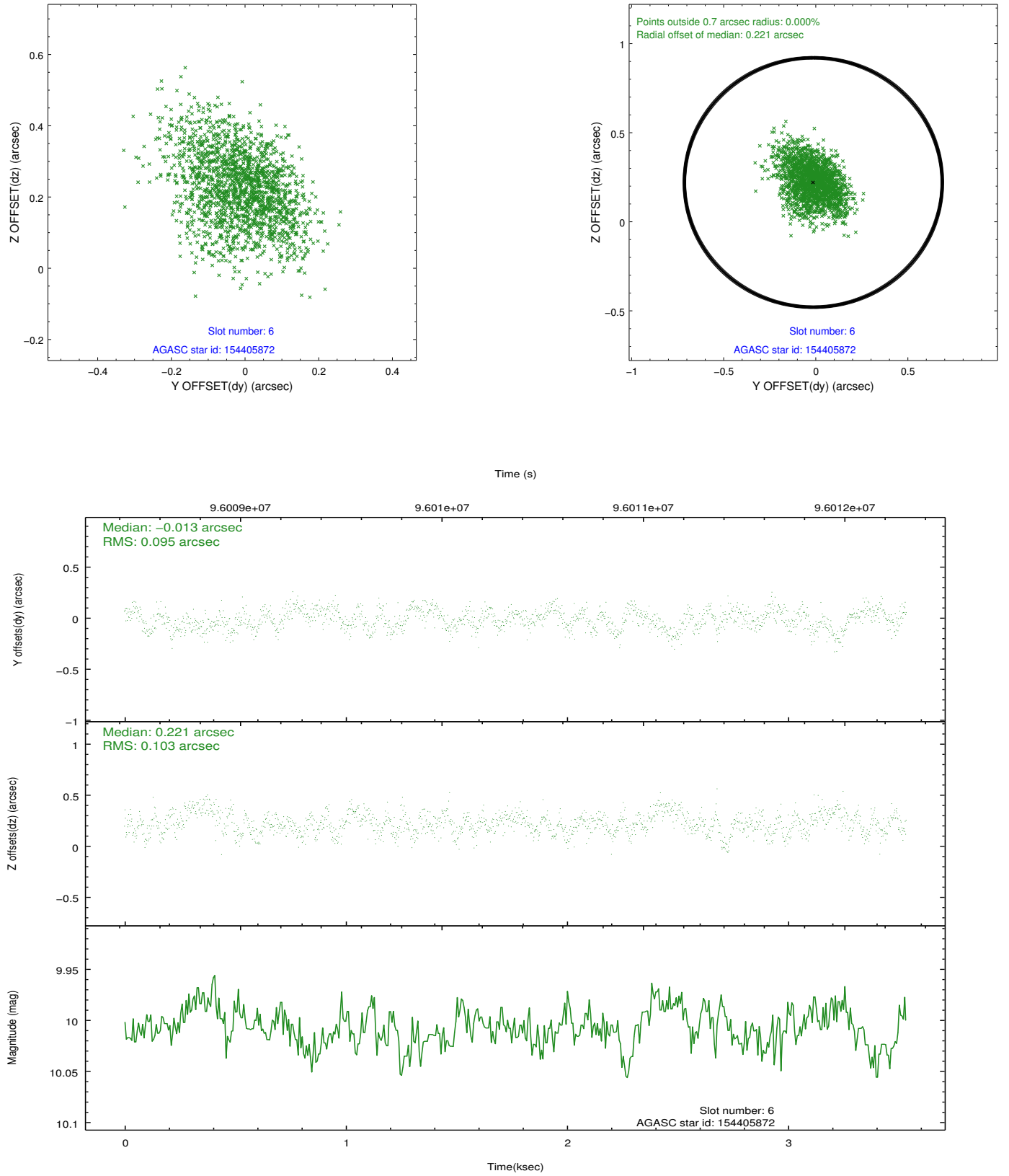
2.4.2 Slot 4



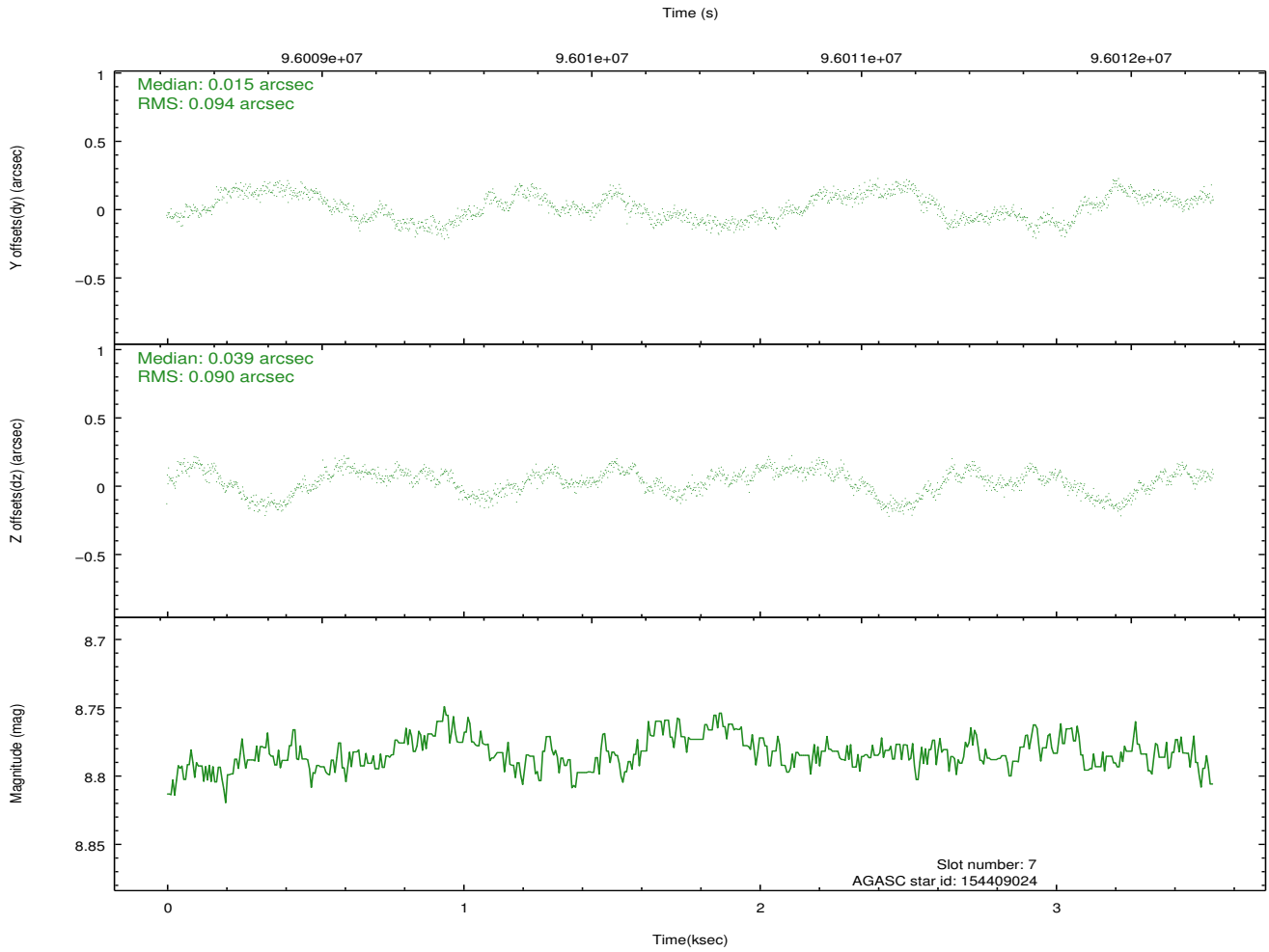
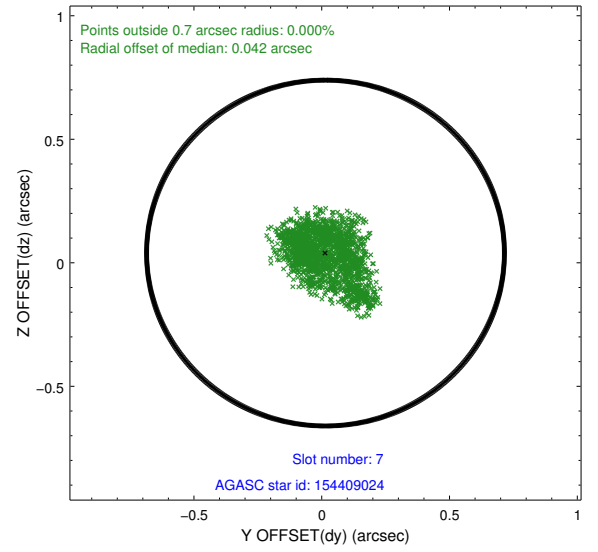
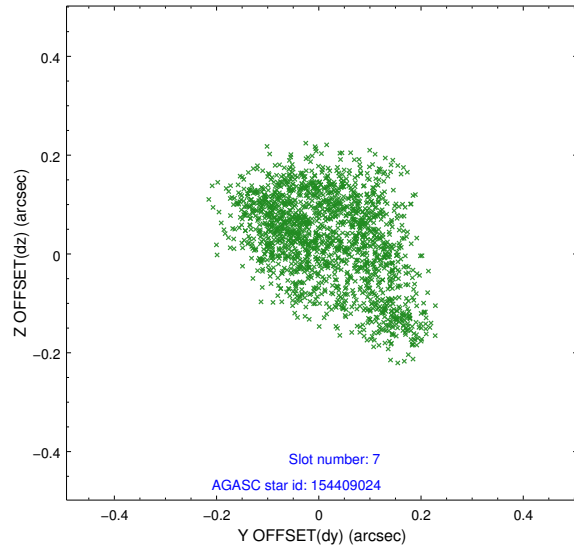
2.4.3 Slot 5



2.4.4 Slot 6

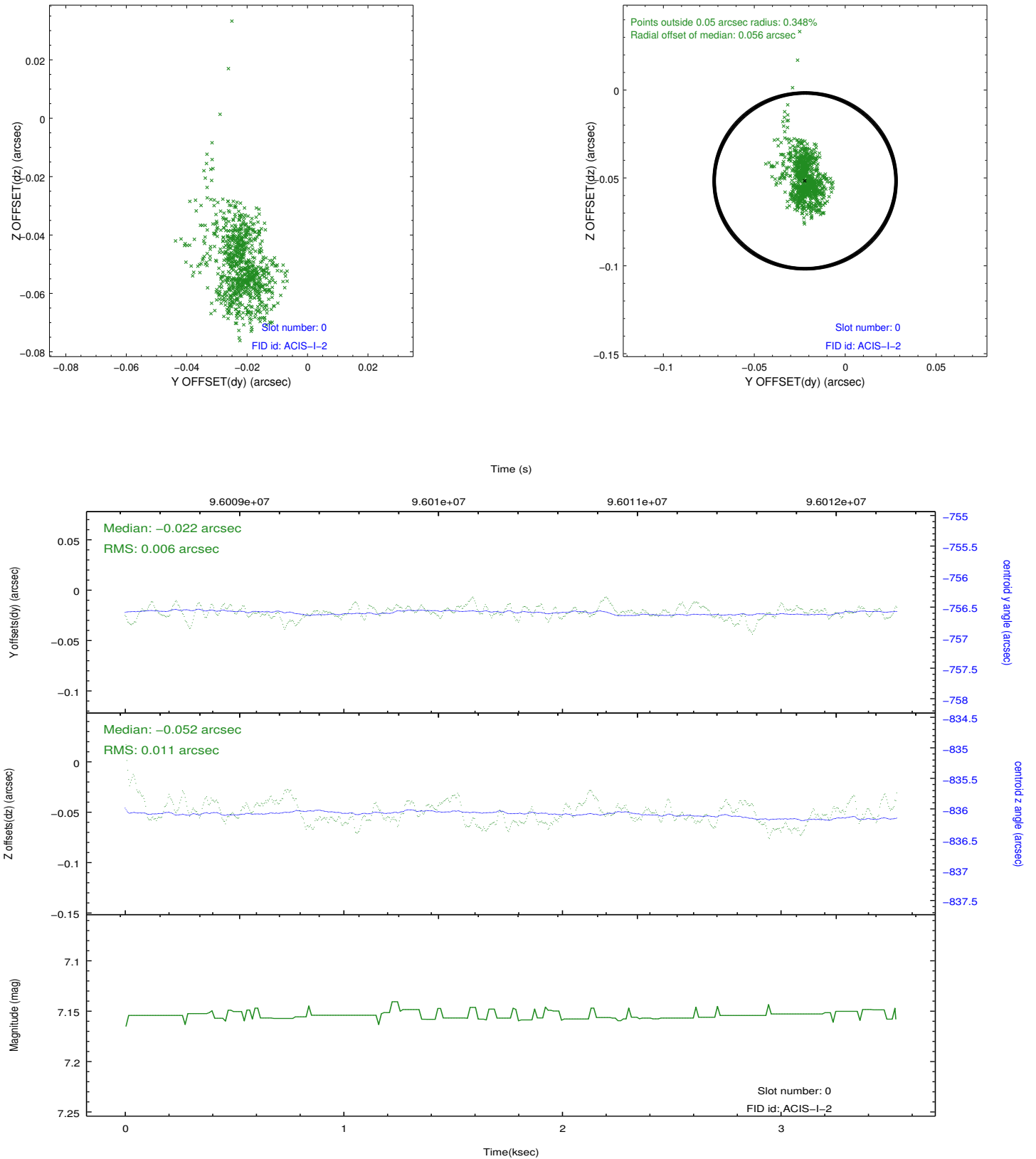


2.4.5 Slot 7

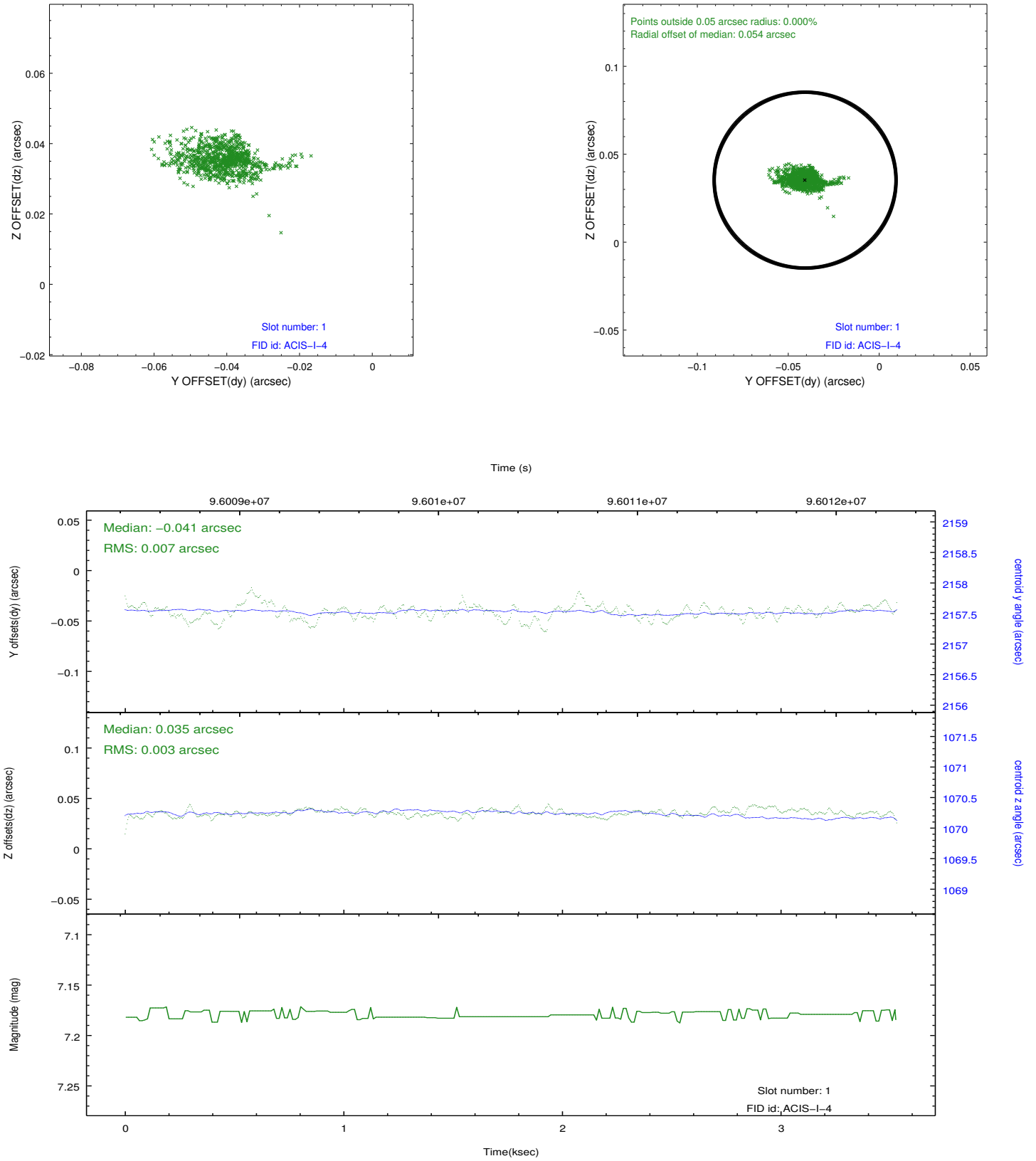


2.5 FID Slots

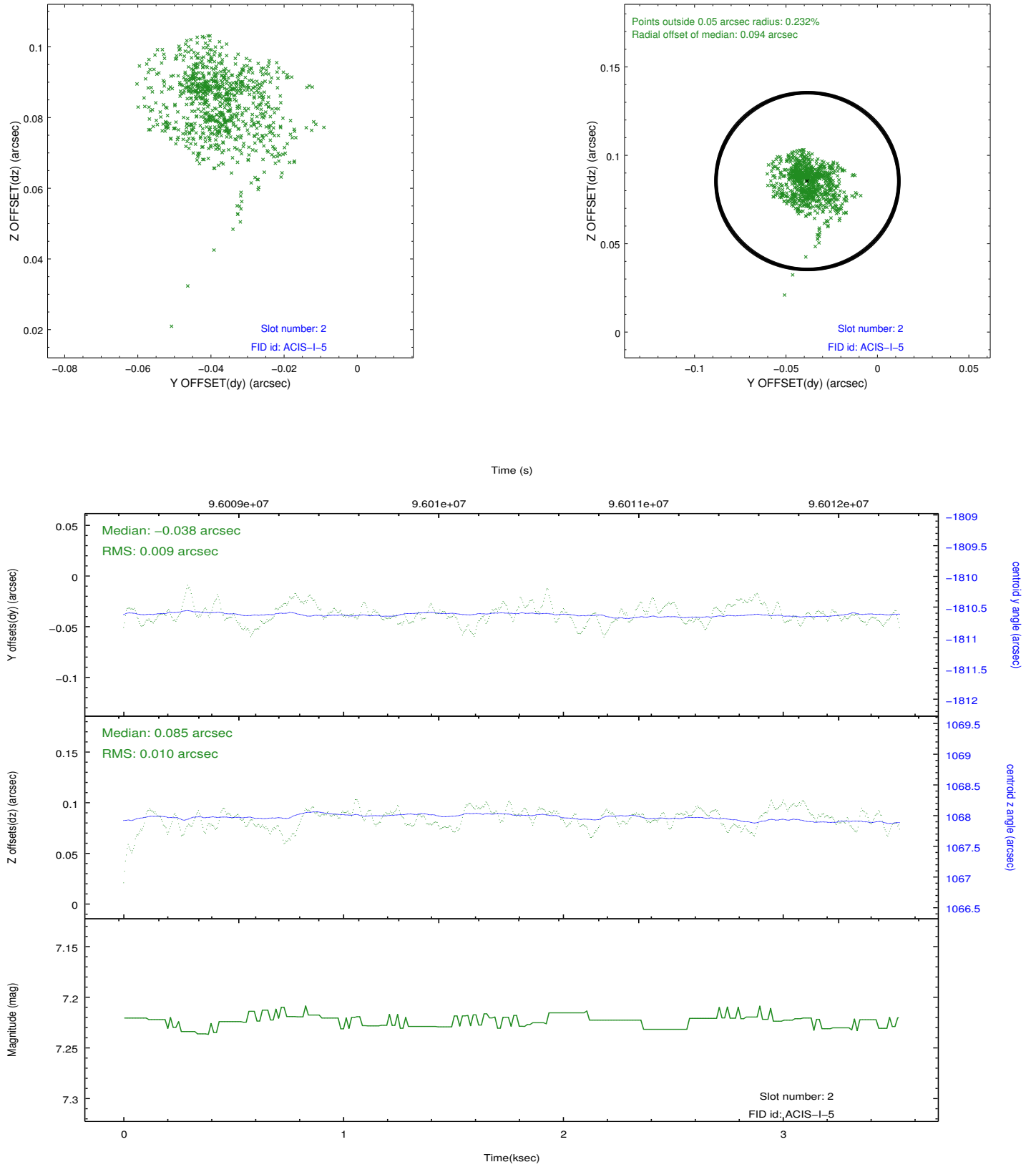
2.5.1 Slot 0



2.5.2 Slot 1



2.5.3 Slot 2



A Summary

A.1 Status

V&V Scientist	Jen Lauer
V&V Date (YYYY-MM-DD)	2012.09.14
V&V Edition	1
V&V Disposition and Status	OK
V&V Charge Time	3.532

A.2 Comments