

# V&V Reference Report

## L2 ASCDS Version : 7.6.9

Observation 2131 - L2 Version 001  
Chandra X-Ray Center

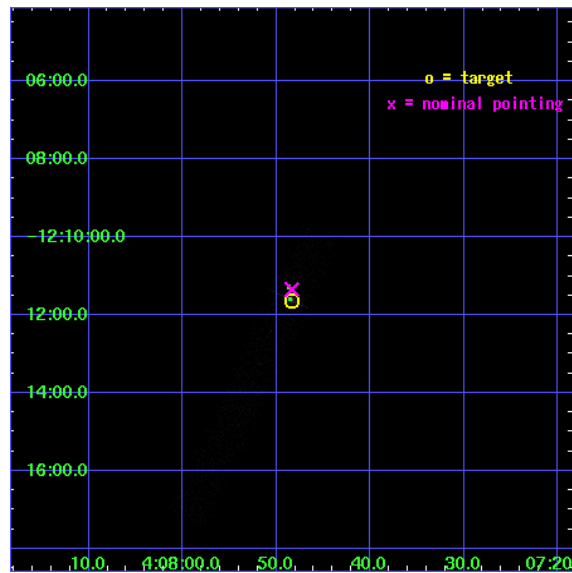
L2 Processing Date : Dec 15 2006

## Contents

<b>1</b>	<b>Front</b>	<b>2</b>
<b>2</b>	<b>OBI</b>	<b>3</b>
2.1	OBI . . . . .	3
2.1.1	Images . . . . .	3
2.1.2	Bias . . . . .	3
2.1.3	Parameters . . . . .	4
2.1.4	Events . . . . .	4
2.2	Compared Parameters . . . . .	5
2.3	Aspect . . . . .	6
2.4	Star Slots . . . . .	9
2.4.1	Slot 3 . . . . .	9
2.4.2	Slot 4 . . . . .	10
2.4.3	Slot 5 . . . . .	11
2.4.4	Slot 6 . . . . .	12
2.4.5	Slot 7 . . . . .	13
2.5	FID Slots . . . . .	14
2.5.1	Slot 0 . . . . .	14
2.5.2	Slot 1 . . . . .	15
2.5.3	Slot 2 . . . . .	16
<b>3</b>	<b>Point Sources</b>	<b>17</b>
<b>A</b>	<b>Summary</b>	<b>18</b>
A.1	Status . . . . .	18
A.2	Comments . . . . .	18

# 1 Front

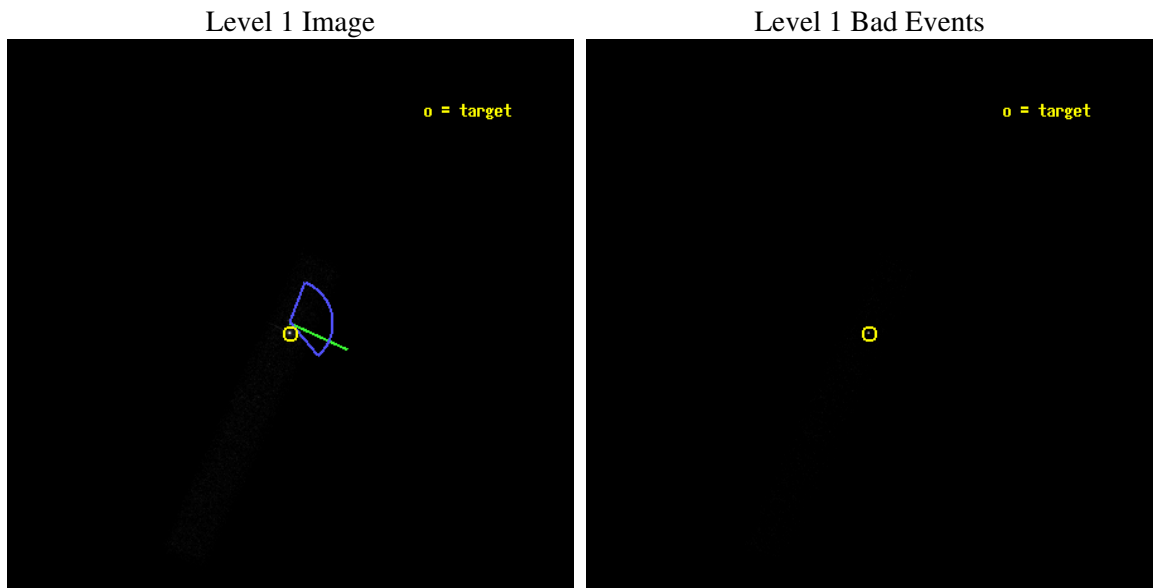
seq_num	700321
obs_id	2131
title	AN UNBIASED SURVEY OF X-RAY AND OPTICAL EMISSION FROM EXTENDED RADIO JETS IN AGN
observer	Dr. Rita Sambruna
object	0405-123
dtcycle	0
cycle	P
ra_targ	61.951667
dec_targ	-12.193611
ra_nom	61.951468647272
dec_nom	-12.189156804976
roll_nom	115.36514305087
revision	2
ontime	9550.2770223469
livetime	8661.5971543142
ontime7	9550.2770223469
l2events	18199



## 2 OBI

### 2.1 OBI

#### 2.1.1 Images



#### 2.1.2 Bias

Chip 7



### 2.1.3 Parameters

obi_num	0
ascdsver	7.6.9
caldbver	3.2.4
date	2006-12-15T16:08:12
revision	2

sched_exp_time	9697.497000
ontime	9551.0371241271
ontime7	9551.0371241271
l1events	27054

### 2.1.4 Events

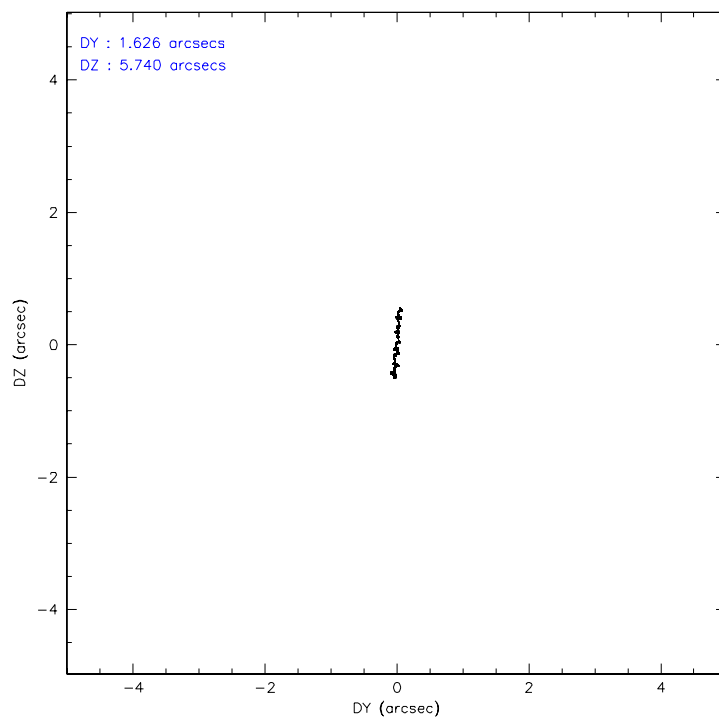
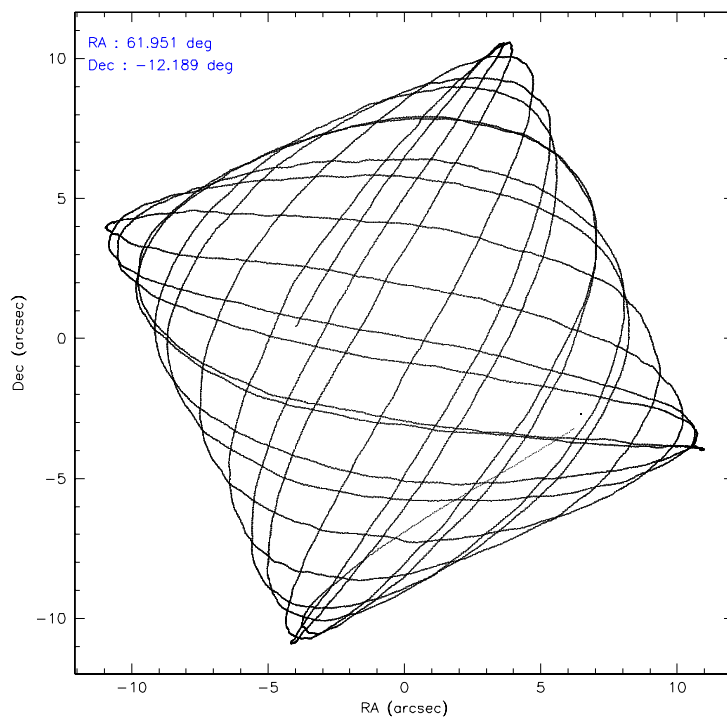
	<b>ccd 7</b>
level 1 events	27054
rejected events	8057
rejected %	29%

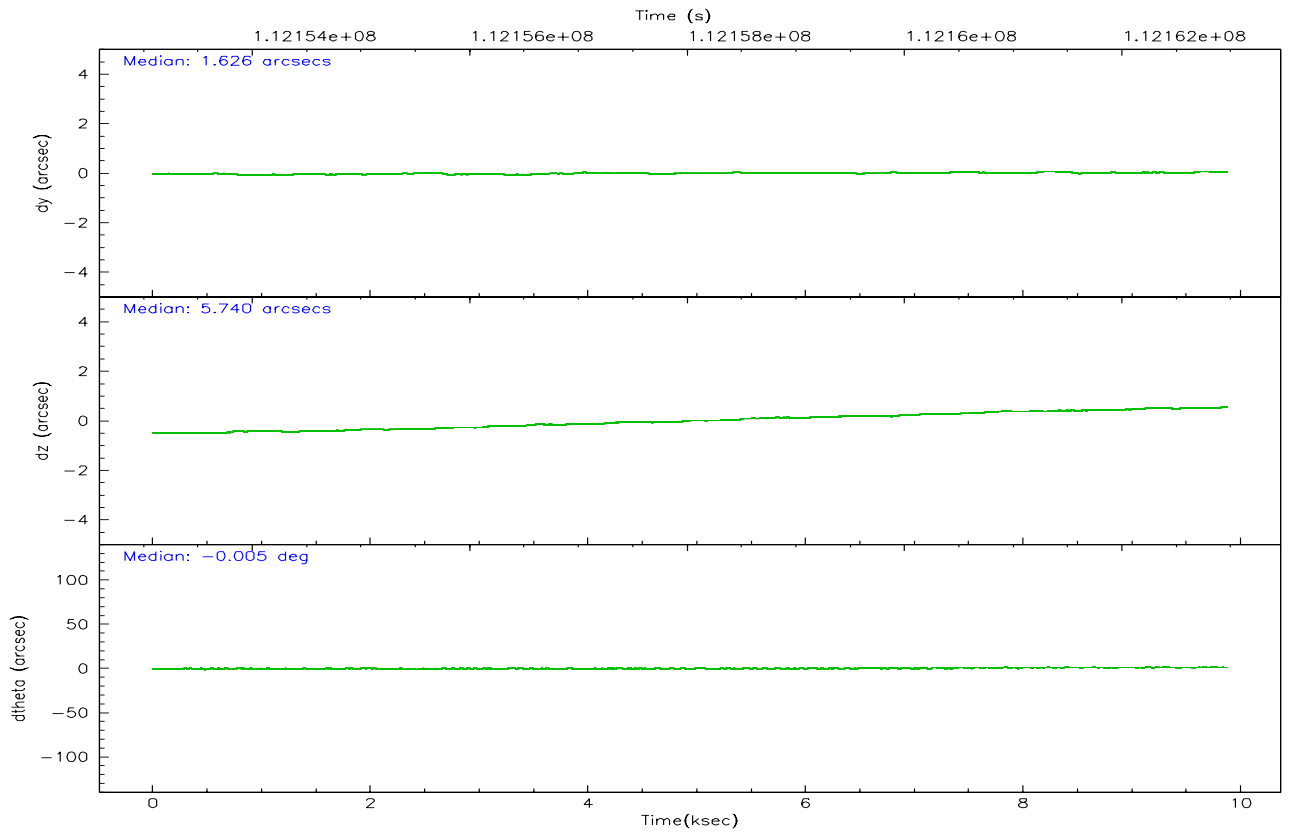
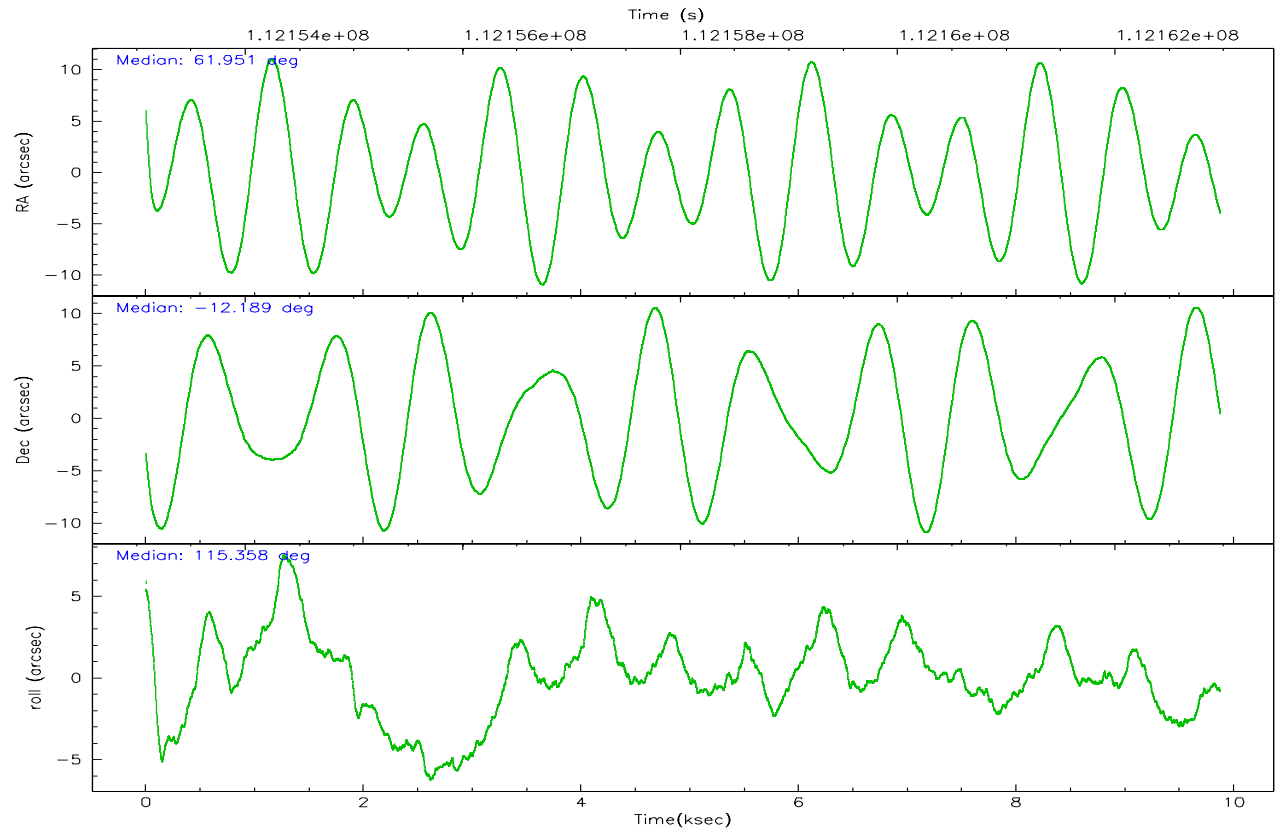
	<b>ccd 7</b>
grade 0 events	4137
	15%
grade 1 events	180
	0%
grade 2 events	4651
	17%
grade 3 events	2038
	7%
grade 4 events	1973
	7%
grade 5 events	1675
	6%
grade 6 events	6199
	22%
grade 7 events	6201
	22%

## 2.2 Compared Parameters

Parameter	Planned	Actual	Parameter	Planned	Actual
Instrument	ACIS	ACIS	Obspar format version number	6	6
Detector	ACIS-7	ACIS-7	Obspar file type	PREDICTED	ACTUAL
Grating	NONE	NONE	Obspar update status	NONE	UPDATED
Data mode	FAINT	FAINT	Number of optional ACIS chips dropped	0	0
Observation mode	POINTING	POINTING	On-chip summing requested	N	N
Pointing RA	61.974596	61.95146864727165	Subarray requested	1/8	1/8
Pointing Dec	-12.204428	-12.18915680497561	Subarray start row	0	449
Pointing Roll	115.213405	115.3651430508733	Subarray row count	1024	128
Roll angle	80.000000	80.000000	Alternating exposures requested	N	N
Roll tolerance	59.000000	59.000000	Primary exposure time	0.000000	0.4
Roll constraint allows 180D rotation	N	N			
SIM focus pos (mm)	-0.684267	-0.6828225247311905			
SIM defocus (mm)	0	0.001444936568705701			
SIM translation stage pos (mm)	-190.132523	-190.1400660498719			
SIM translation stage offset (mm)	0	0.00754346686406393			
Observation start time	112153267.184000	112152269.05283			
Observation start date	2001-07-22T01:40:03	2001-07-22T01:24:29			
Observation end time	112162964.184000	112163279.09076			
Observation end date	2001-07-22T04:21:40	2001-07-22T04:27:59			
Read mode	TIMED	TIMED			

## 2.3 Aspect





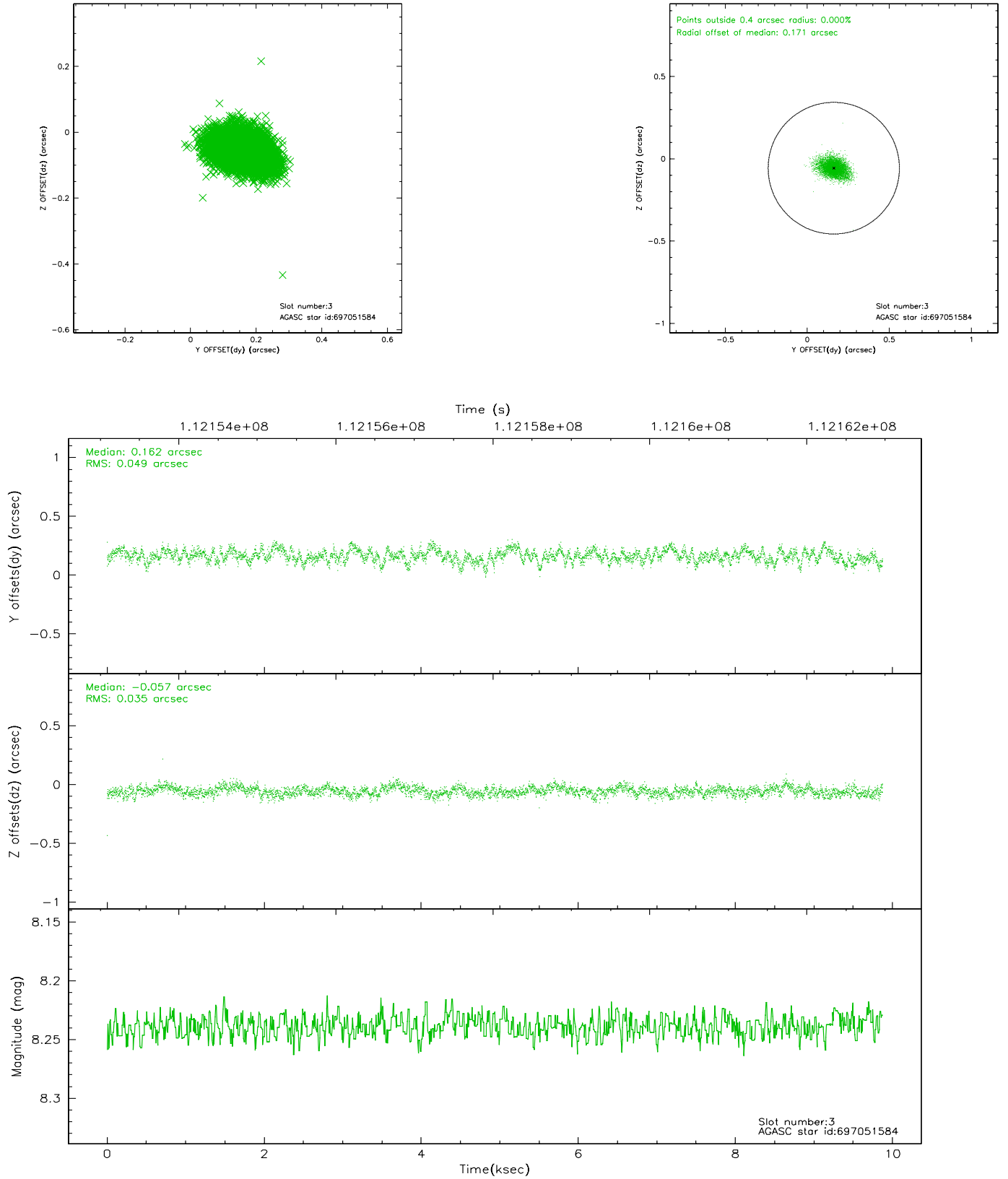
### Slot Statistics

slot	status	id	mag	n_pts	med_dy	med_dz	dr1	dr2	ra	dec	mean_y	mean_z
0	FID	ACIS-S-2	7.11	2409	-0.030	0.030	0.007	0.011	0.000000	0.000000	-754.22	-1726.86
1	FID	ACIS-S-4	7.20	2408	-0.078	0.006	0.006	0.011	0.000000	0.000000	2158.73	181.10
2	FID	ACIS-S-5	7.24	2408	0.077	-0.027	0.007	0.011	0.000000	0.000000	-1806.30	175.28
3	GUIDE	697051584	8.24	4815	0.162	-0.057	0.062	0.107	61.845245	-12.658678	-1286.59	1107.50
4	GUIDE	697046464	9.40	4816	0.139	-0.097	0.088	0.145	62.016173	-12.512844	-1067.49	340.75
5	GUIDE	696650176	8.80	4813	-0.055	0.195	0.069	0.111	62.359396	-11.993938	106.78	-1548.07
6	GUIDE	696663240	9.18	4815	-0.254	-0.009	0.082	0.137	61.490507	-11.700212	2366.93	771.34
7	GUIDE	696650480	9.17	4815	0.008	-0.035	0.082	0.131	61.577909	-11.910493	1551.54	814.20

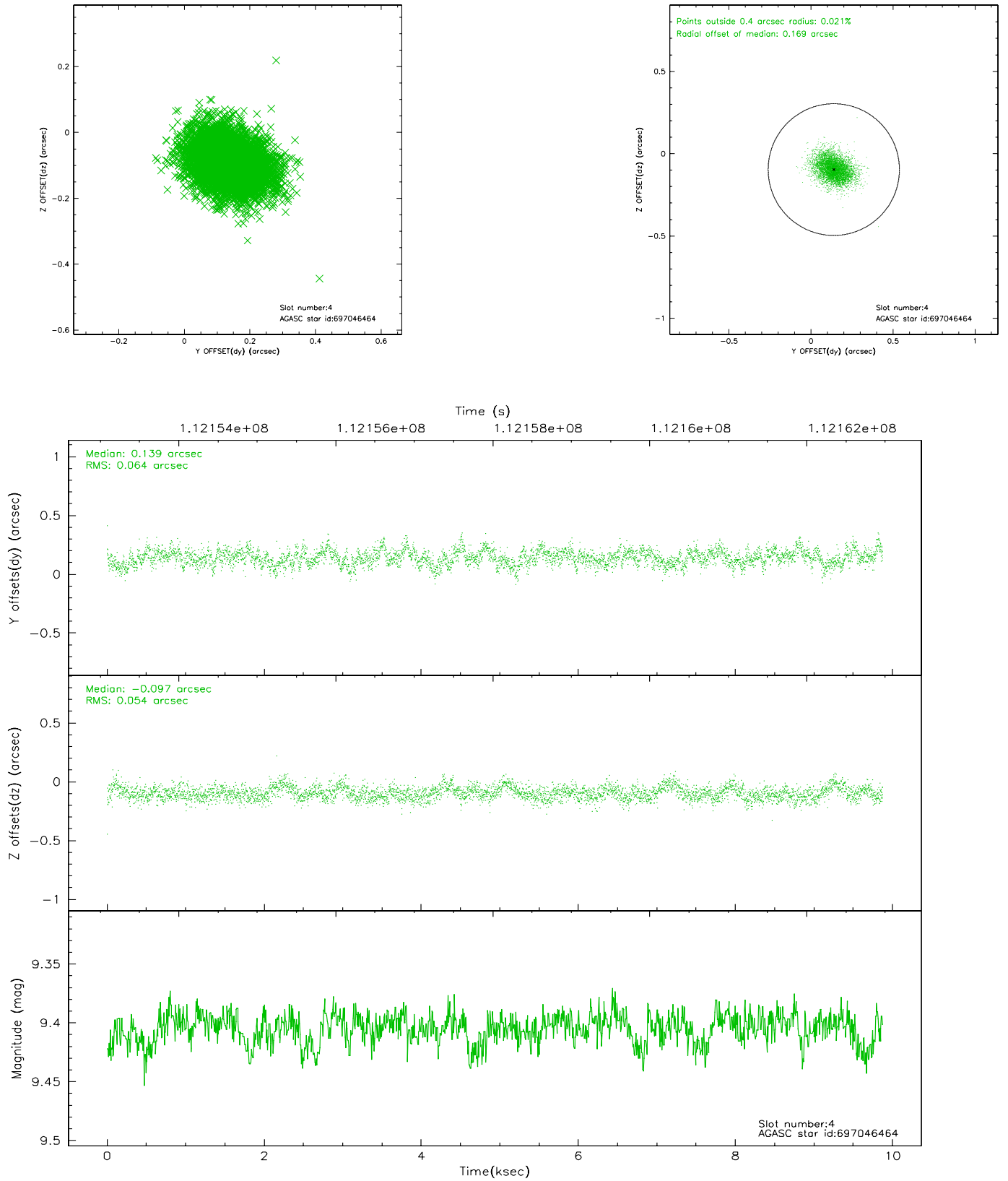


## 2.4 Star Slots

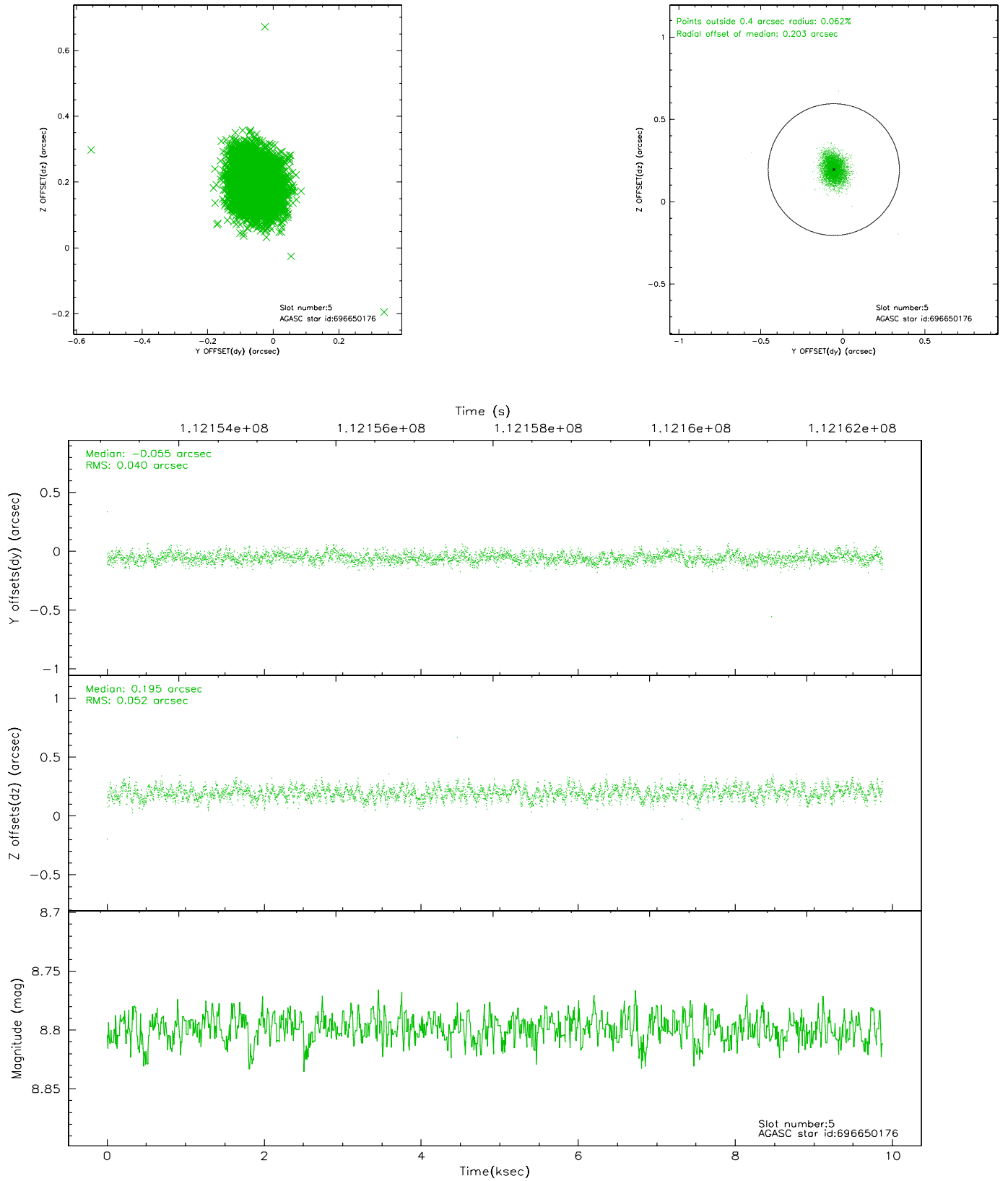
### 2.4.1 Slot 3



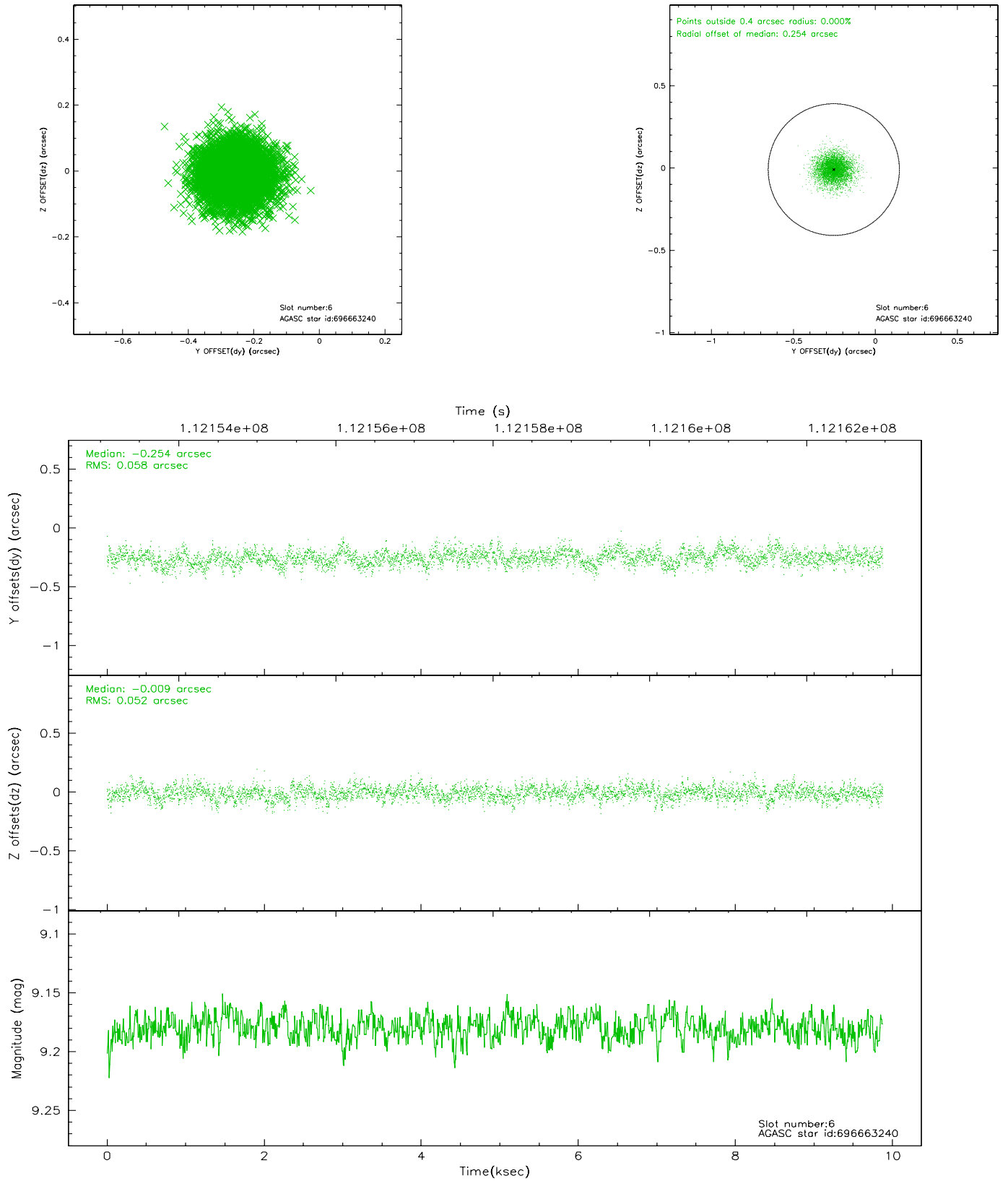
## 2.4.2 Slot 4



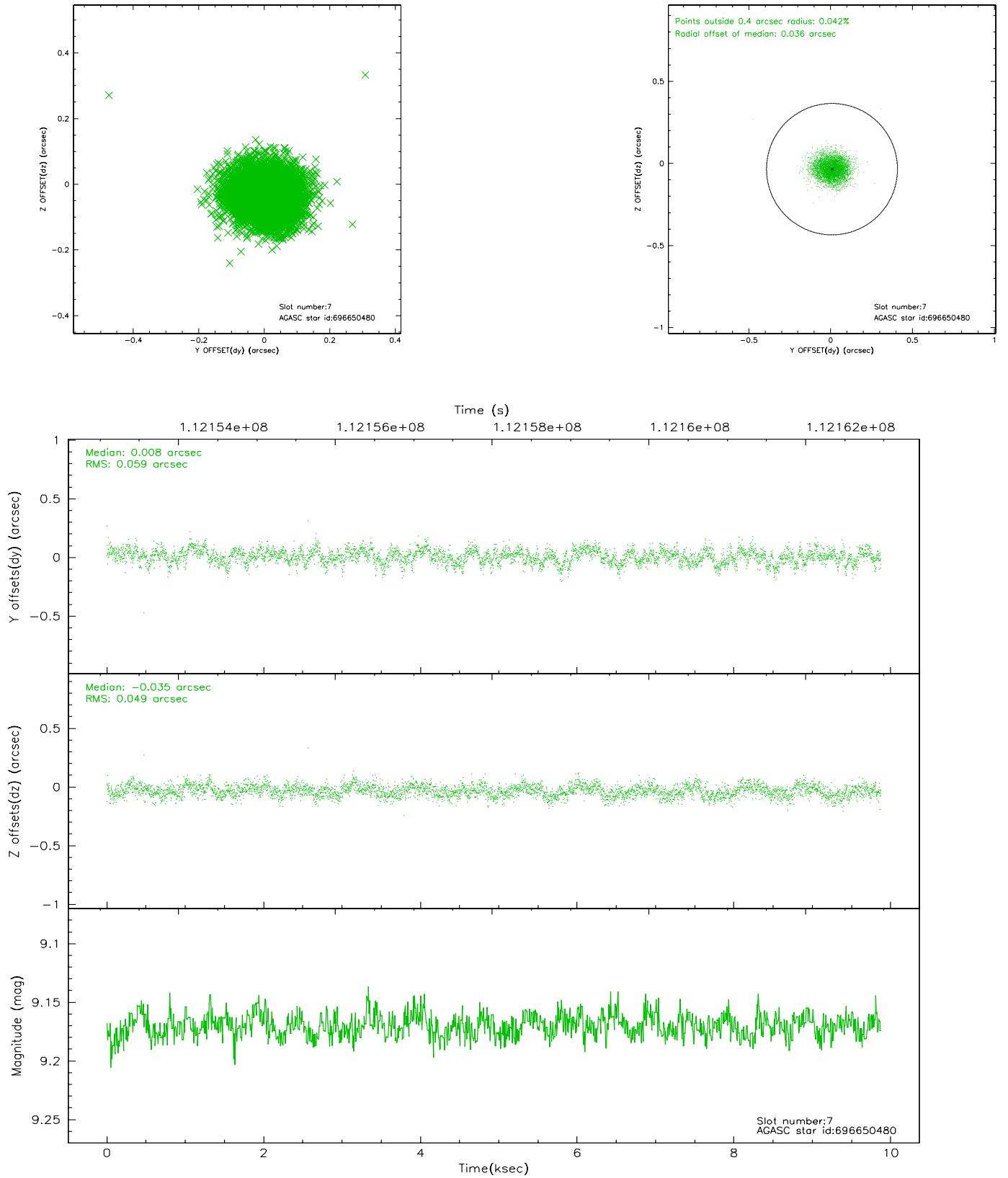
### 2.4.3 Slot 5



## 2.4.4 Slot 6

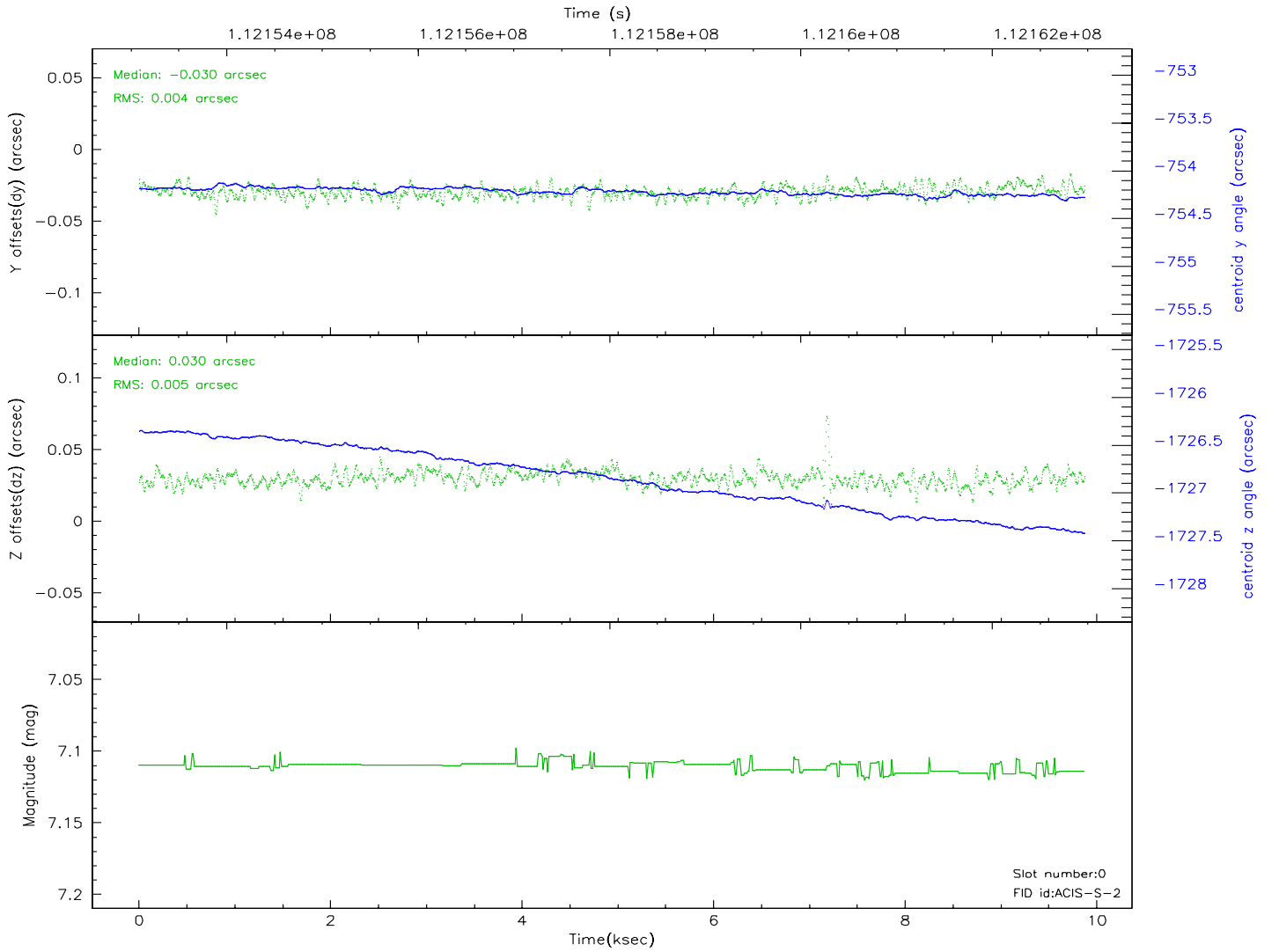
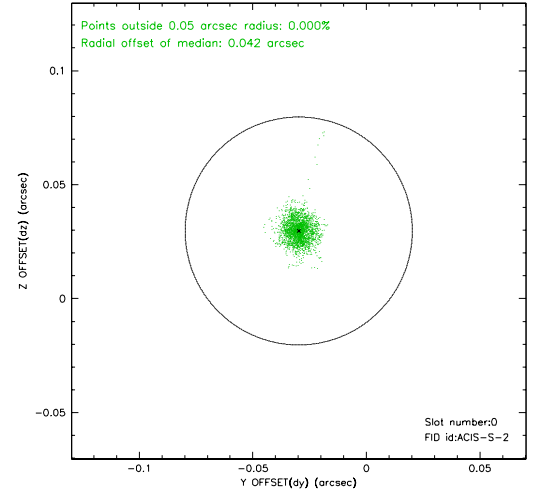
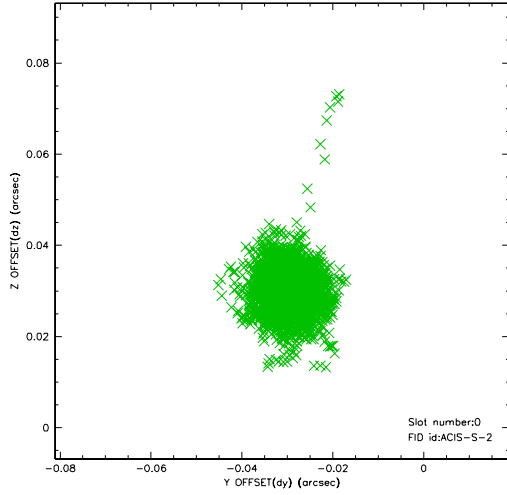


## 2.4.5 Slot 7

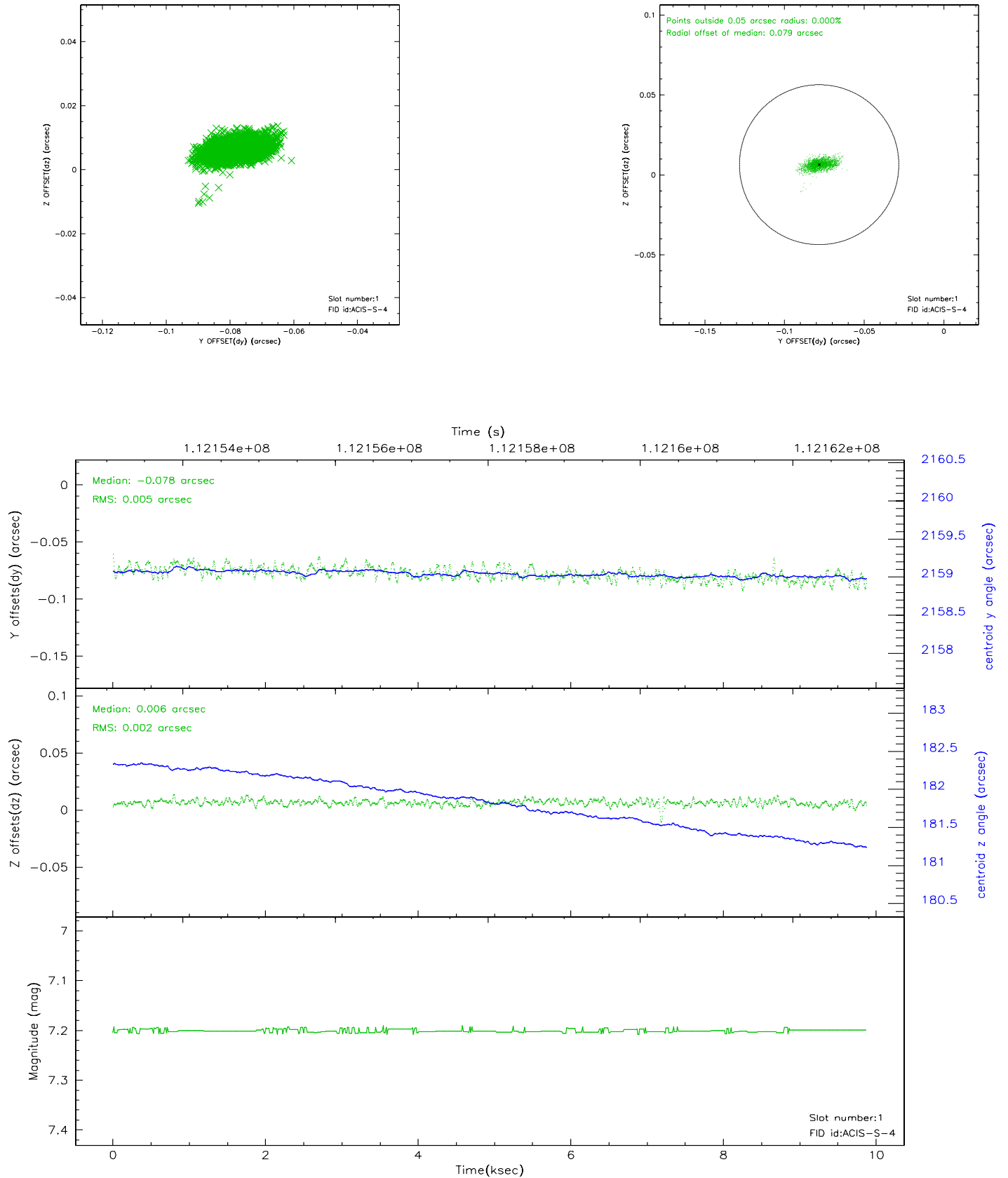


## 2.5 FID Slots

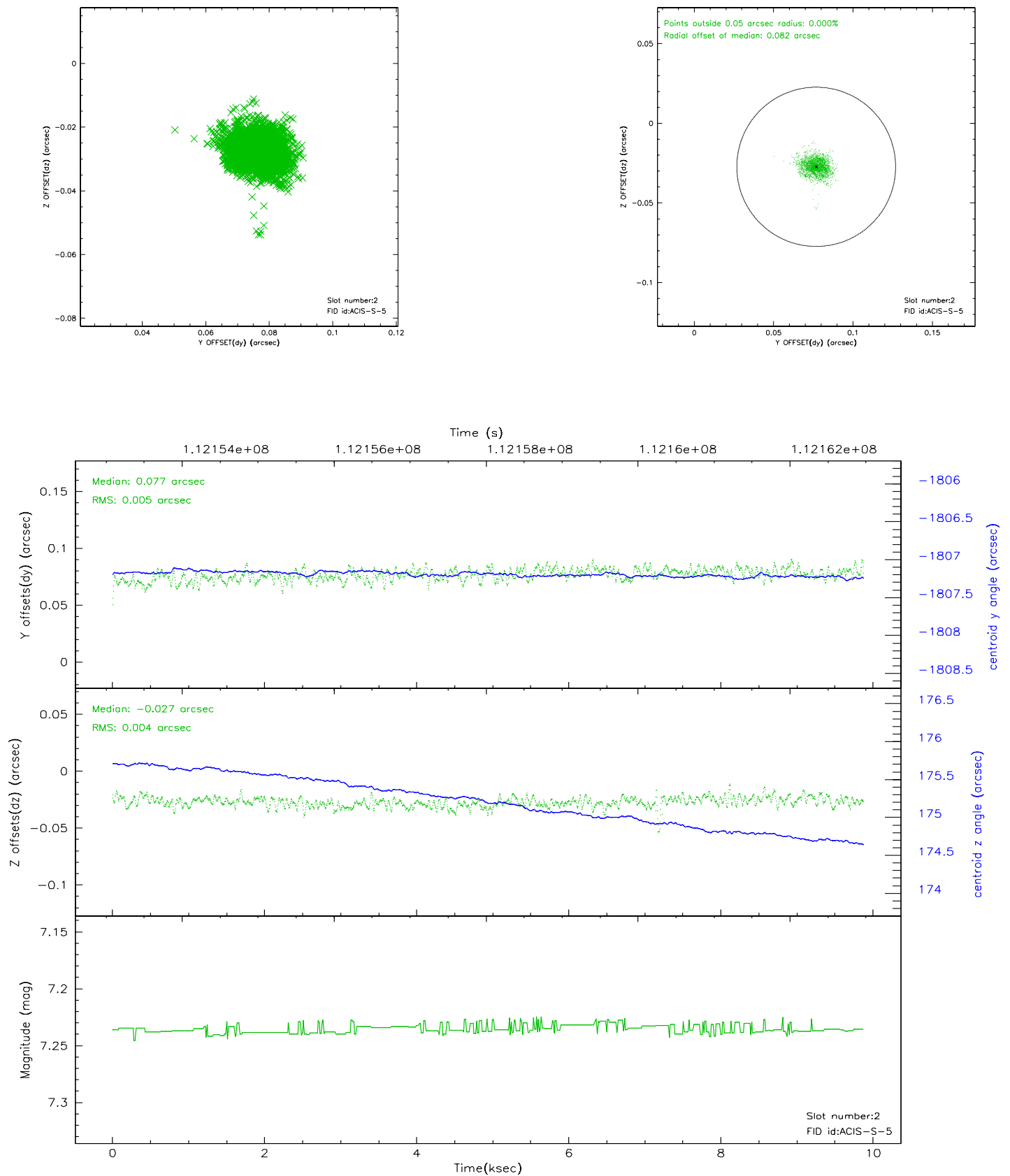
### 2.5.1 Slot 0



## 2.5.2 Slot 1



### 2.5.3 Slot 2





### 3 Point Sources

## A Summary

### A.1 Status

V&V Scientist	Jen Lauer
V&V Date (YYYY-MM-DD)	2006.12.15
V&V Edition	1
V&V Disposition and Status	OK
V&V Charge Time	9.55

### A.2 Comments

Roll constraint met.