

# V&V Reference Report

## L2 ASCDS Version : 7.6.9

Observation 2051 - L2 Version 001  
Chandra X-Ray Center

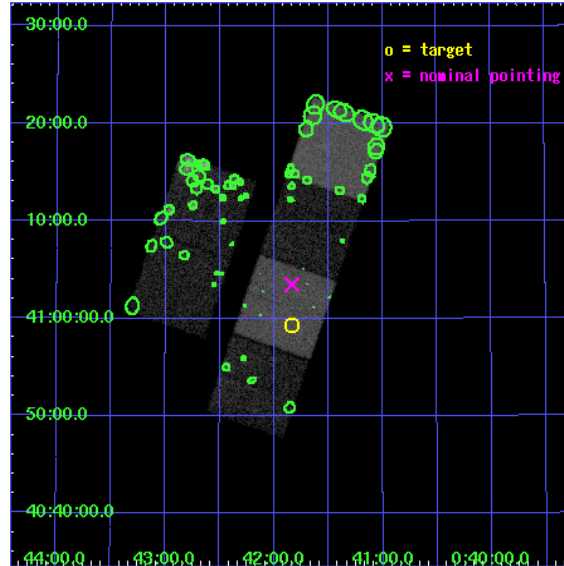
L2 Processing Date : Dec 11 2006

## Contents

<b>1</b>	<b>Front</b>	<b>2</b>
<b>2</b>	<b>OBI</b>	<b>3</b>
2.1	OBI . . . . .	3
2.1.1	Images . . . . .	3
2.1.2	Bias . . . . .	3
2.1.3	Parameters . . . . .	4
2.1.4	Events . . . . .	4
2.2	Compared Parameters . . . . .	5
2.3	Aspect . . . . .	6
2.4	Star Slots . . . . .	9
2.4.1	Slot 3 . . . . .	9
2.4.2	Slot 4 . . . . .	10
2.4.3	Slot 5 . . . . .	11
2.4.4	Slot 6 . . . . .	12
2.4.5	Slot 7 . . . . .	13
2.5	FID Slots . . . . .	14
2.5.1	Slot 0 . . . . .	14
2.5.2	Slot 1 . . . . .	15
2.5.3	Slot 2 . . . . .	16
<b>3</b>	<b>Point Sources</b>	<b>17</b>
<b>A</b>	<b>Summary</b>	<b>18</b>
A.1	Status . . . . .	18
A.2	Comments . . . . .	18

# 1 Front

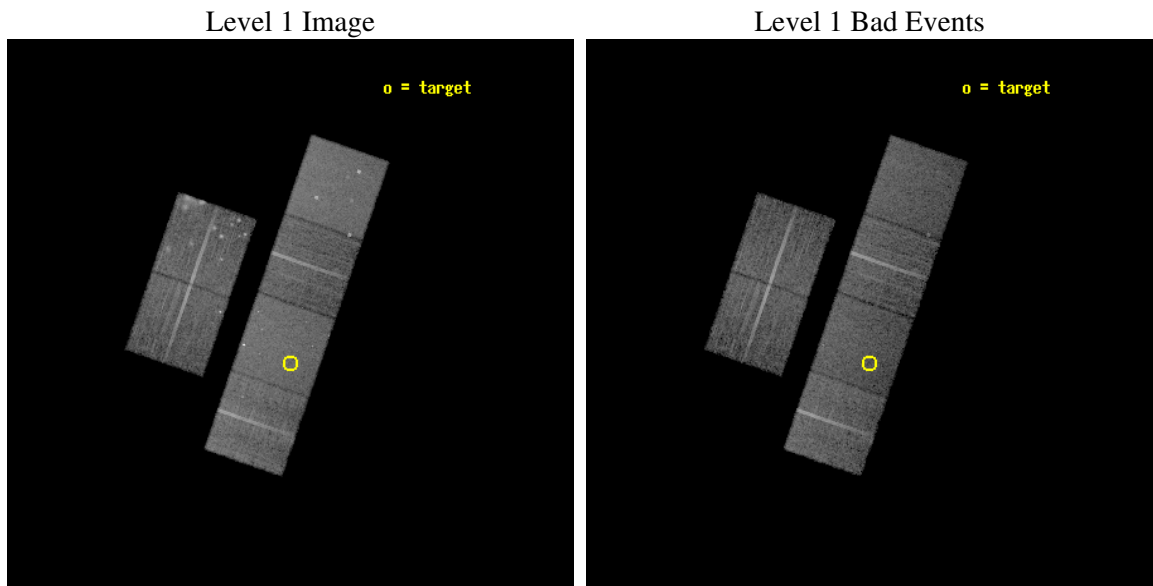
seq_num	600185
obs_id	2051
title	2001: A SPACE CENSUS -- SUPERSOFT X-RAY SOURCES AND OTHER X-RAY SOURCES IN M31
observer	Dr Rosanne Di Stefano
object	M31_2
dtcycle	0
cycle	P
ra_targ	10.457917
dec_targ	40.988889
ra_nom	10.45901852062
dec_nom	41.058681227626
roll_nom	109.04610334052
revision	2
ontime	13753.600012809
livetime	13579.443648023
ontime2	13753.600012809
ontime3	13750.359062567
ontime5	13753.600012809
ontime6	13753.600012809
ontime7	13753.600012809
ontime8	13747.118072376
l2events	148957



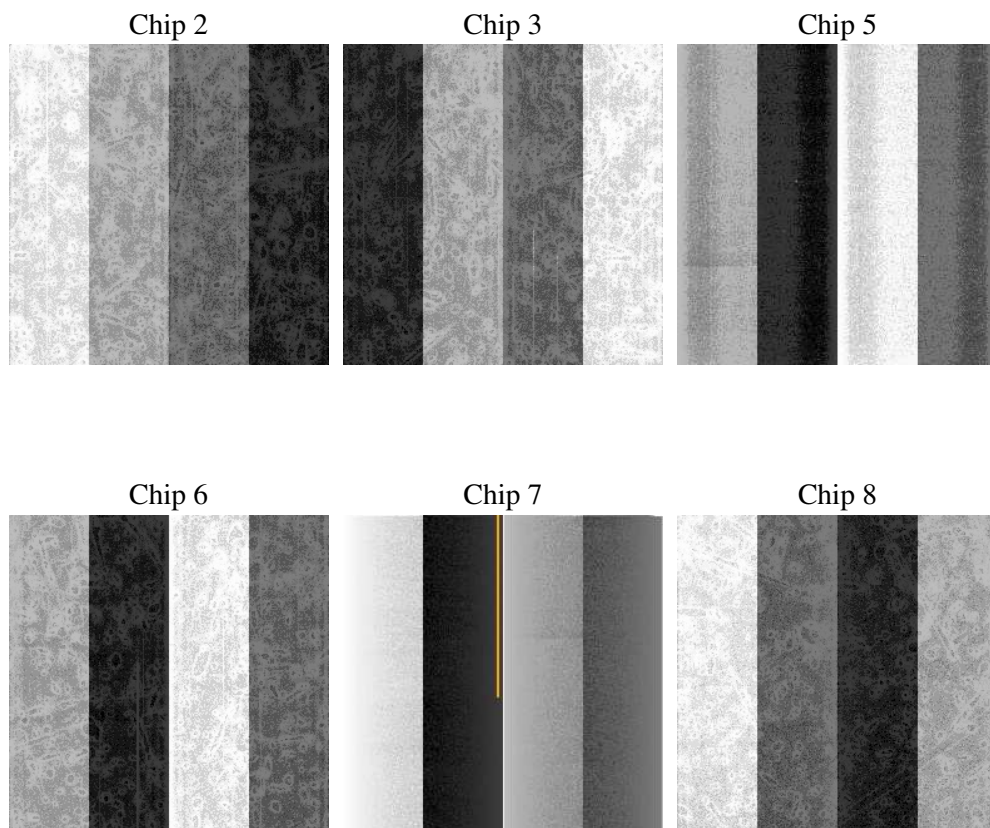
## 2 OBI

### 2.1 OBI

#### 2.1.1 Images



#### 2.1.2 Bias



### 2.1.3 Parameters

obi_num	0
ascdsver	7.6.9
caldsver	3.2.4
date	2006-12-11T12:19:24
revision	2

sched_exp_time	14000.000000
ontime	13758.035377443
ontime2	13758.035377443
ontime3	13754.794427201
ontime5	13758.035377443
ontime6	13758.035377443
ontime7	13758.035377443
ontime8	13751.553337321
l1events	644779

### 2.1.4 Events

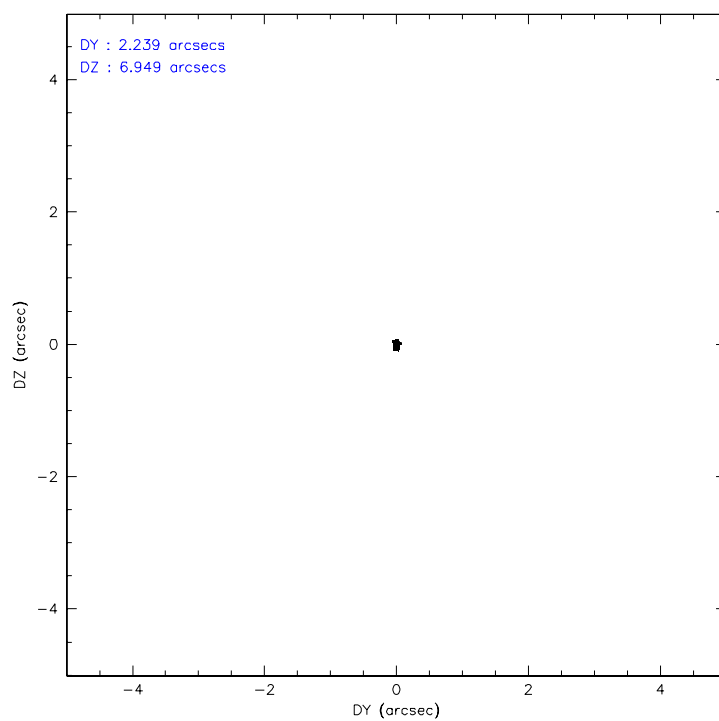
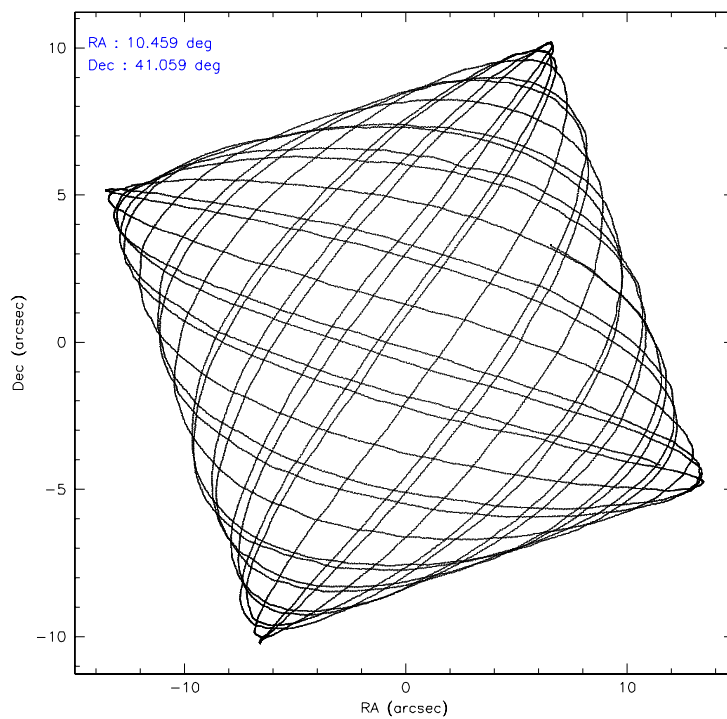
	ccd 2	ccd 3	ccd 5	ccd 6	ccd 7	ccd 8
level 1 events	105713	88850	125938	90779	117116	116383
rejected events	81736	78017	69757	80079	69737	92913
rejected %	77%	87%	55%	88%	59%	79%

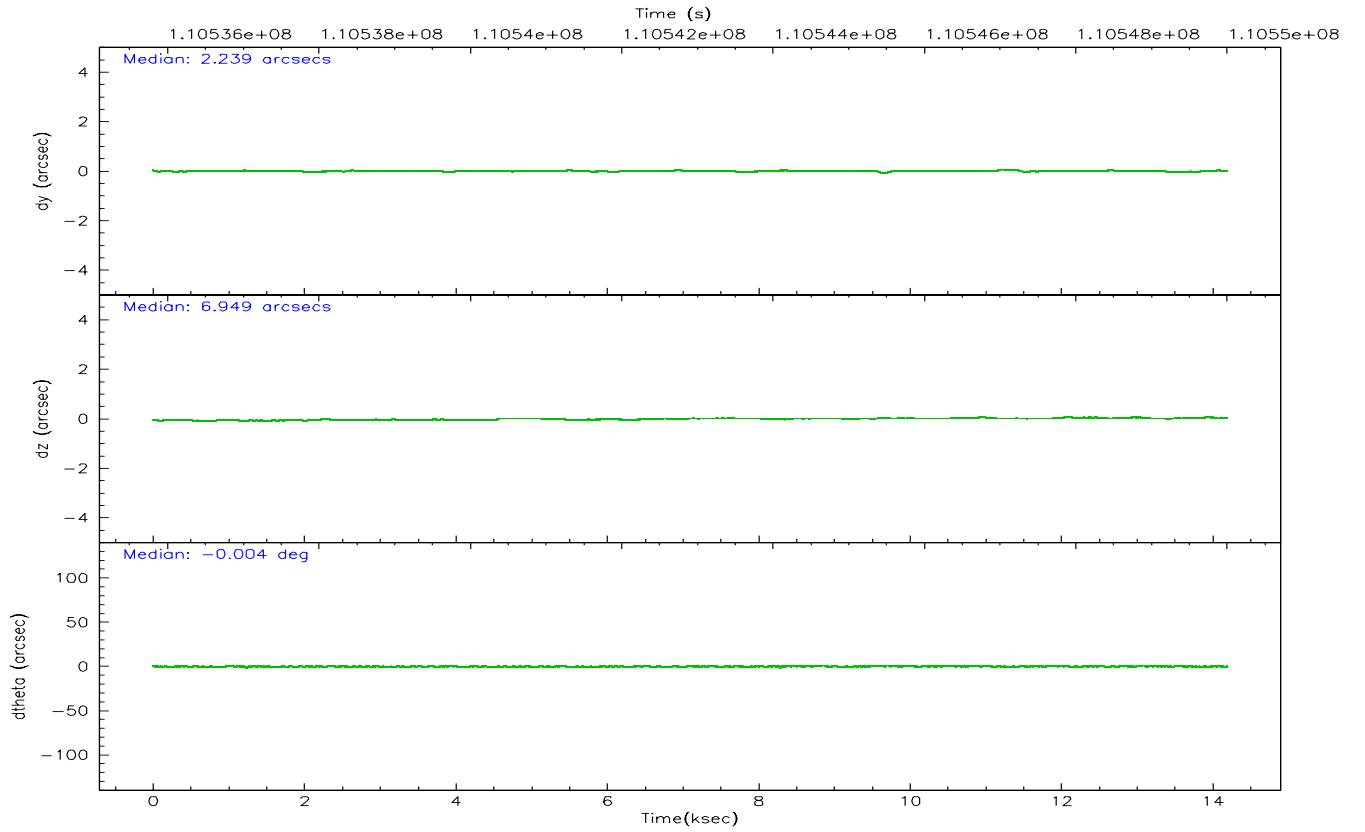
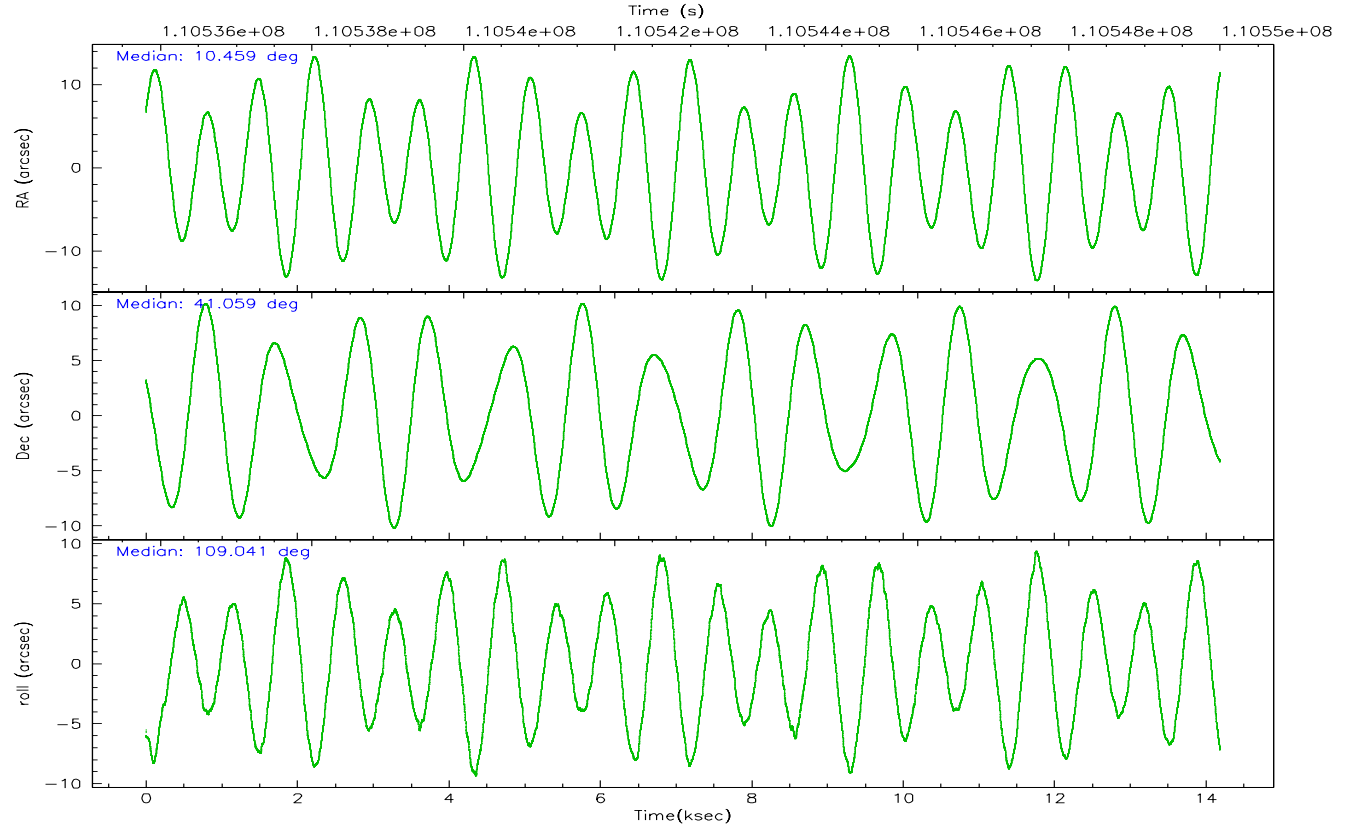
	ccd 2	ccd 3	ccd 5	ccd 6	ccd 7	ccd 8
grade 0 events	15701	5038	5083	4460	3565	7337
	14%	5%	4%	4%	3%	6%
grade 1 events	88	42	242	33	56	85
	0%	0%	0%	0%	0%	0%
grade 2 events	3562	2073	17135	2108	11838	5091
	3%	2%	13%	2%	10%	4%
grade 3 events	1322	939	1426	1062	2688	2466
	1%	1%	1%	1%	2%	2%
grade 4 events	1311	957	1352	1061	2565	2332
	1%	1%	1%	1%	2%	2%
grade 5 events	3204	3369	6244	3734	7607	4732
	3%	3%	4%	4%	6%	4%
grade 6 events	2091	1831	31223	2015	26754	6249
	1%	2%	24%	2%	22%	5%
grade 7 events	78434	74601	63233	76306	62043	88091
	74%	83%	50%	84%	52%	75%

## 2.2 Compared Parameters

Parameter	Planned	Actual	Parameter	Planned	Actual
Instrument	ACIS	ACIS	Obspar format version number	6	6
Detector	ACIS-235678	ACIS-235678	Obspar file type	PREDICTED	ACTUAL
Grating	NONE	NONE	Obspar update status	NONE	UPDATED
Data mode	FAINT	FAINT	Number of optional ACIS chips dropped	0	0
Observation mode	POINTING	POINTING	On-chip summing requested	N	N
Pointing RA	10.486571	10.45901852062024	Subarray requested	NONE	NONE
Pointing Dec	41.041030	41.05868122762642	Alternating exposures requested	N	N
Pointing Roll	108.871383	109.0461033405162	Primary exposure time	0.000000	3.2
SIM focus pos (mm)	-0.684267	-0.6828225247311905			
SIM defocus (mm)	0	0.001444936568705701			
SIM translation stage pos (mm)	-190.132523	-190.145094680475			
SIM translation stage offset (mm)	0	0.01257209746719923			
Observation start time	110535998.184000	110535620.02709			
Observation start date	2001-07-03T08:25:34	2001-07-03T08:20:20			
Observation end time	110549998.184000	110550138.64016			
Observation end date	2001-07-03T12:18:54	2001-07-03T12:22:18			
Read mode	TIMED	TIMED			

## 2.3 Aspect





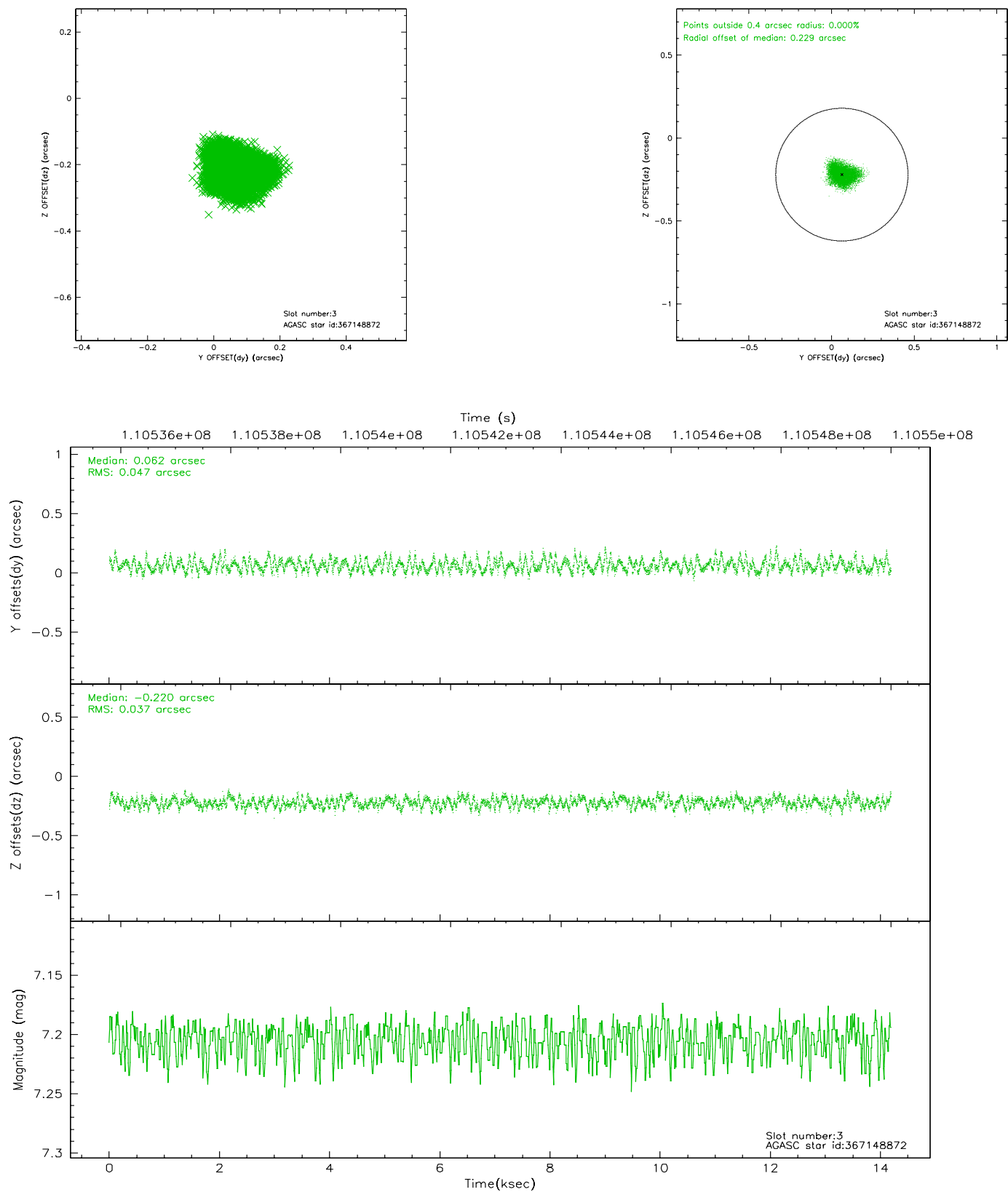
### Slot Statistics

slot	status	id	mag	n_pts	med_dy	med_dz	dr1	dr2	ra	dec	mean_y	mean_z
0	FID	ACIS-S-2	7.12	3462	0.022	0.018	0.005	0.009	0.000000	0.000000	-754.82	-1727.99
1	FID	ACIS-S-4	7.20	3461	-0.055	-0.011	0.006	0.010	0.000000	0.000000	2158.21	180.15
2	FID	ACIS-S-6	7.35	3461	0.006	-0.001	0.007	0.012	0.000000	0.000000	407.54	817.91
3	GUIDE	367148872	7.20	6924	0.062	-0.220	0.065	0.100	10.505940	40.688258	-1219.46	360.24
4	GUIDE	367138920	7.73	6925	0.031	0.096	0.074	0.110	11.513485	40.808909	-1680.92	-2383.10
5	GUIDE	367139768	7.98	6922	0.157	0.066	0.057	0.090	11.069715	40.685175	-1722.72	-1094.38
6	GUIDE	365965512	8.30	6923	-0.085	-0.184	0.053	0.087	9.391602	41.418521	2258.51	2351.24
7	GUIDE	367674552	8.85	6922	-0.170	0.243	0.068	0.111	11.016238	41.570845	1347.27	-1967.76

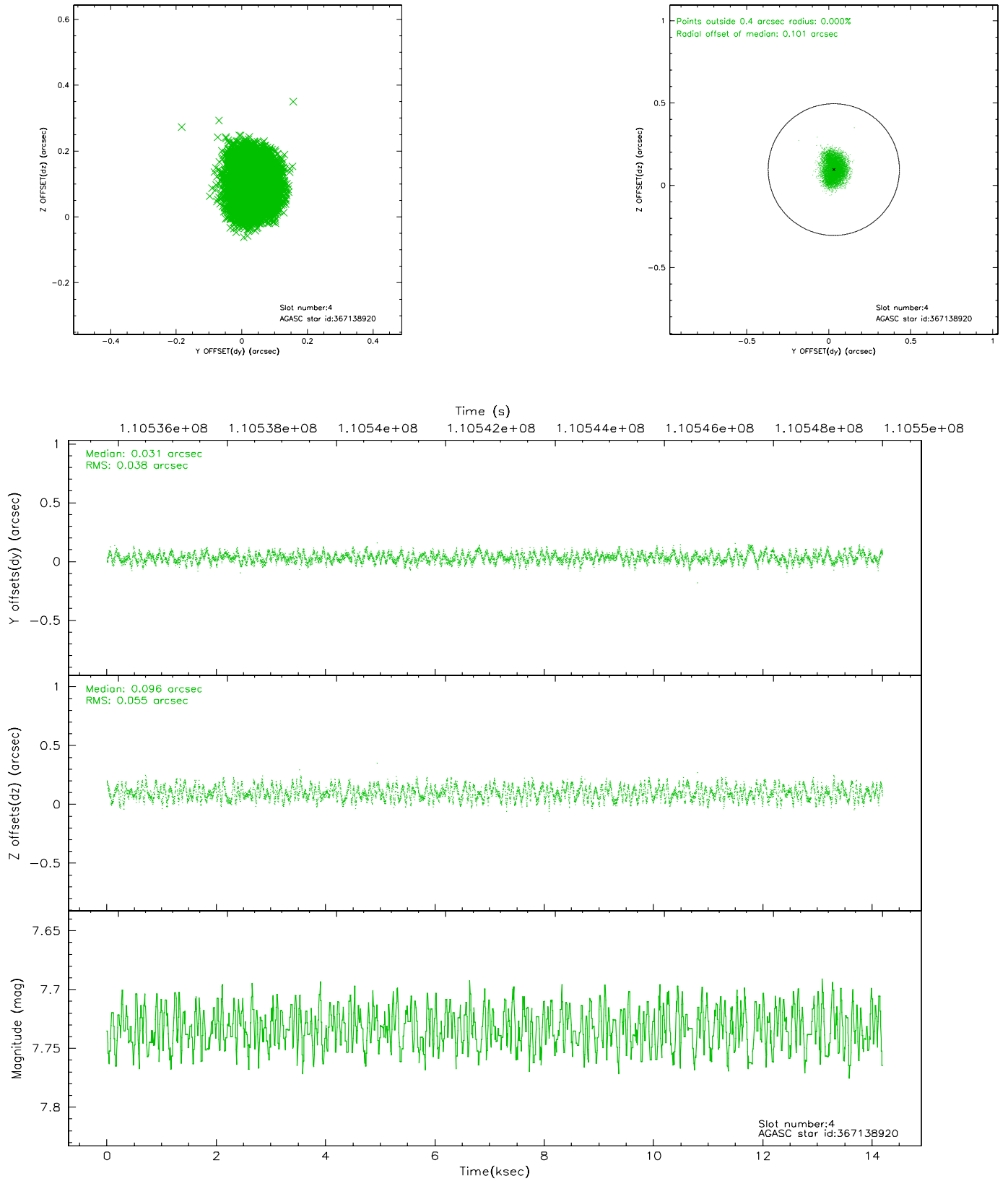


## 2.4 Star Slots

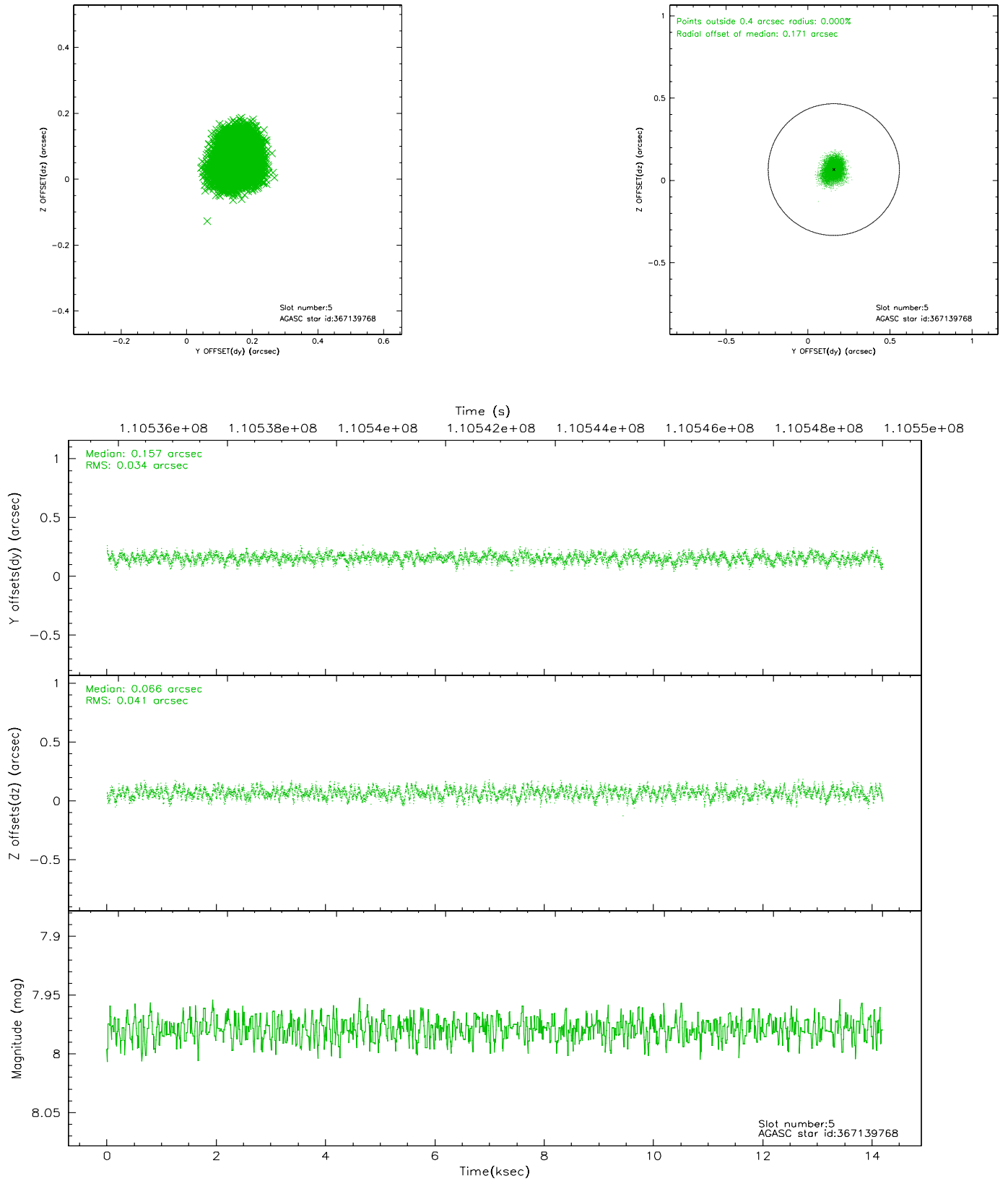
### 2.4.1 Slot 3



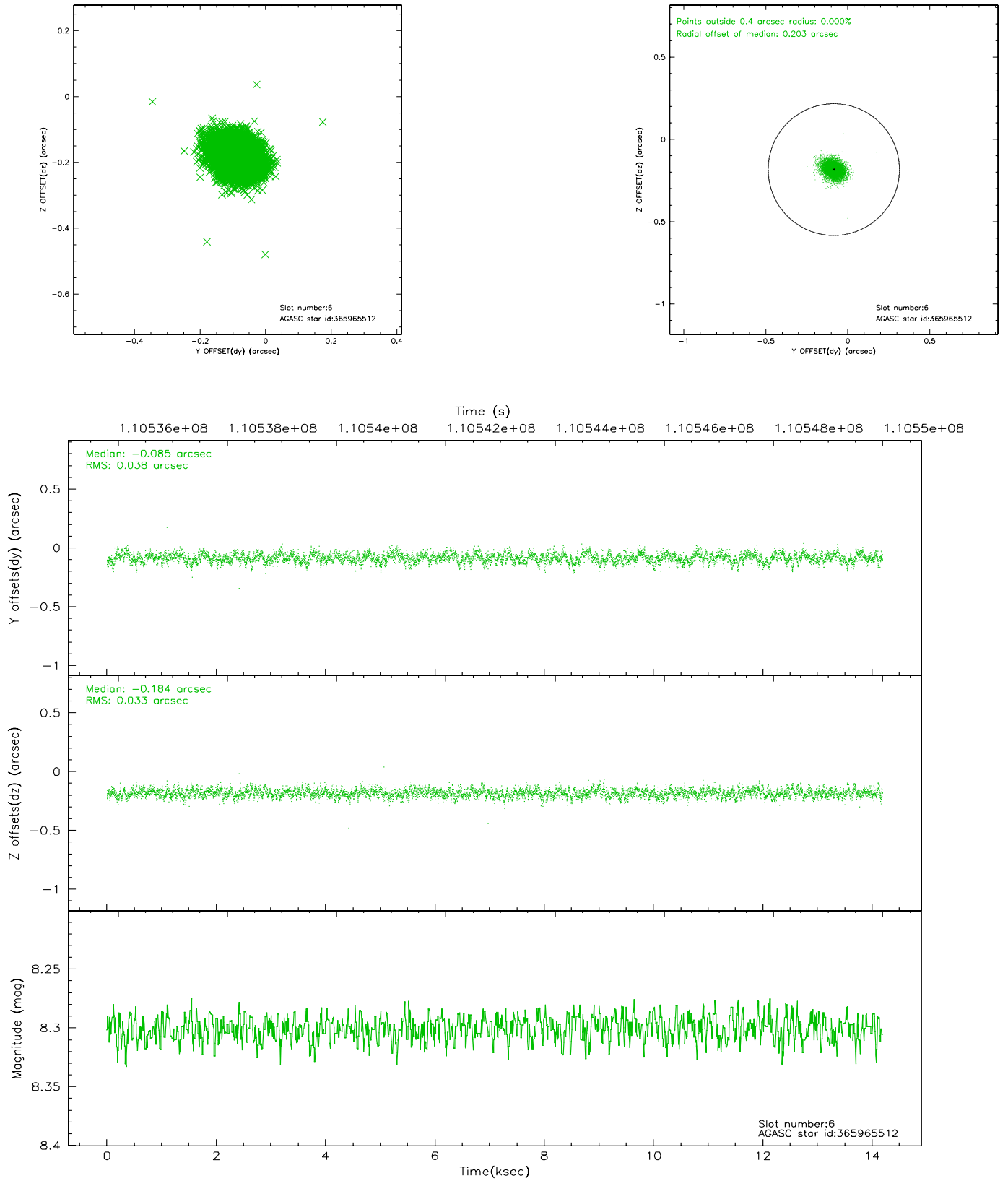
## 2.4.2 Slot 4



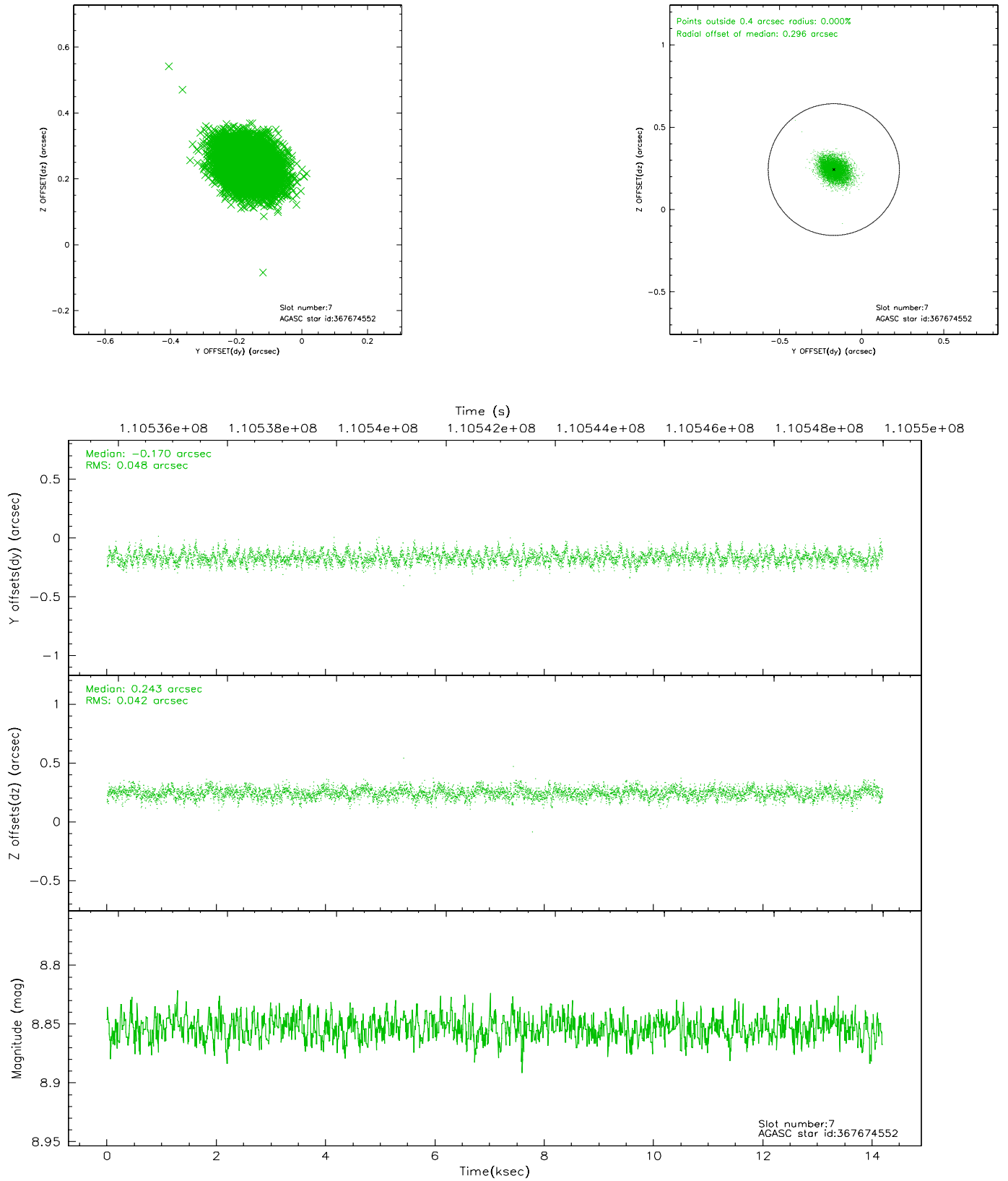
### 2.4.3 Slot 5



## 2.4.4 Slot 6

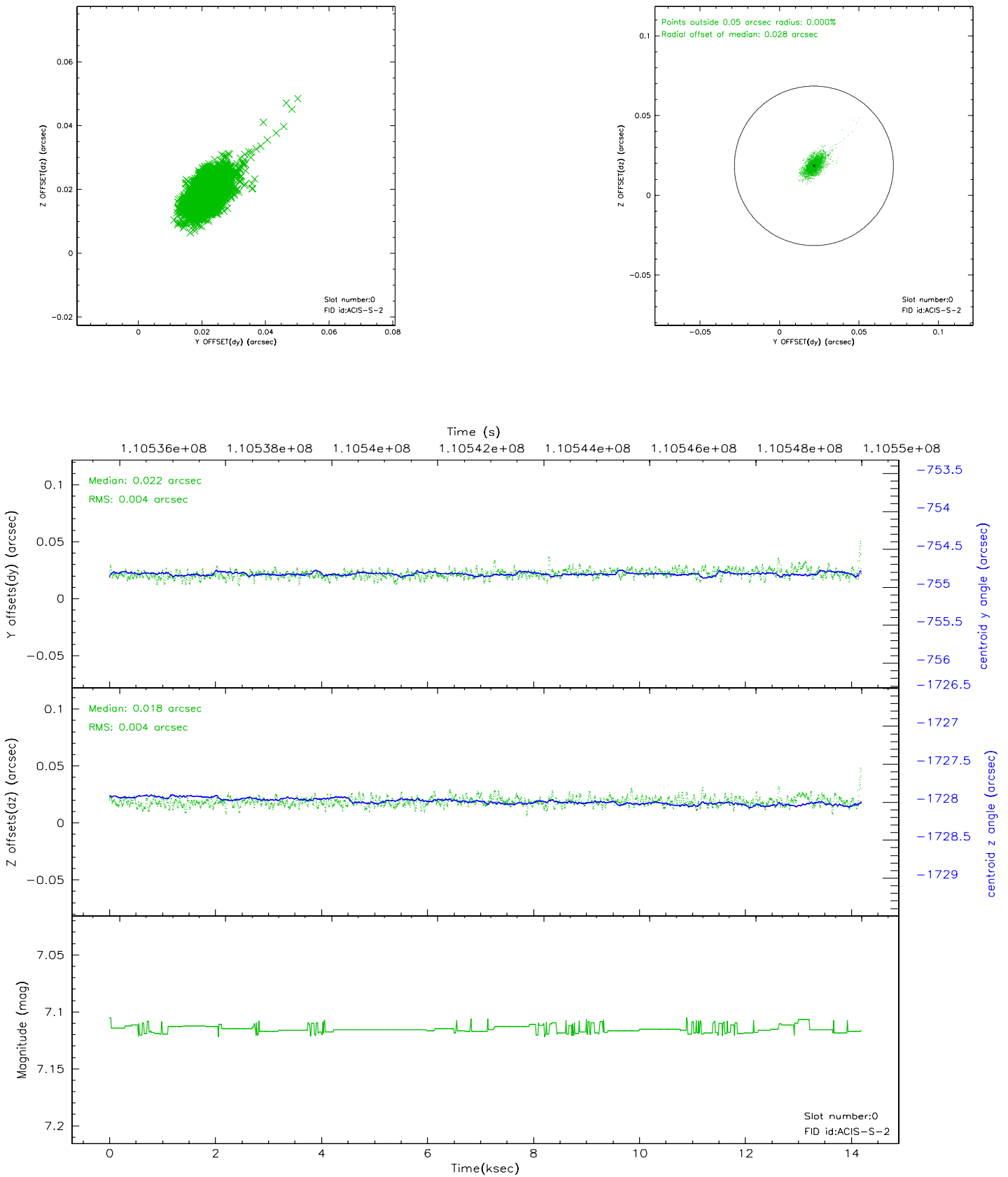


## 2.4.5 Slot 7

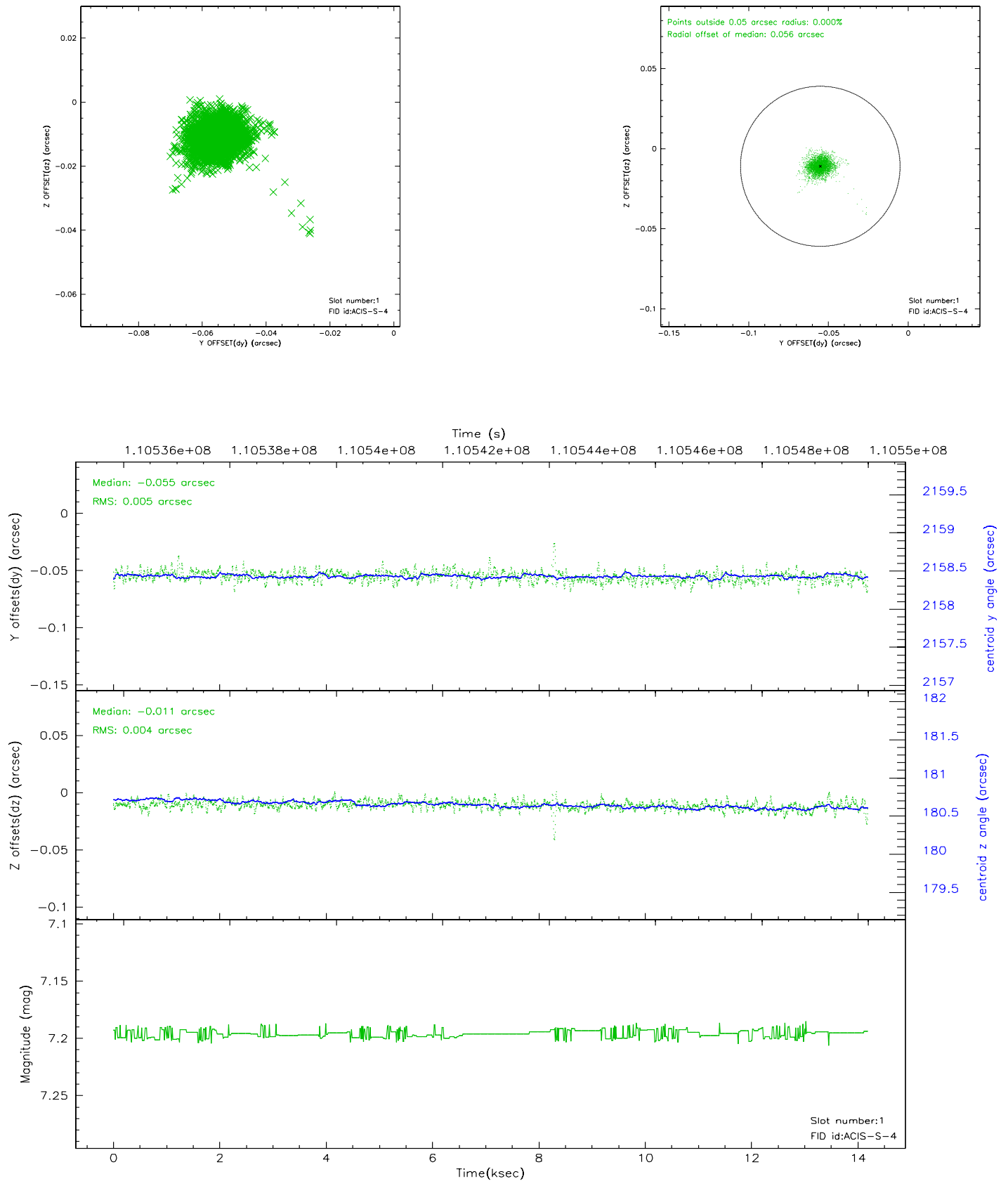


## 2.5 FID Slots

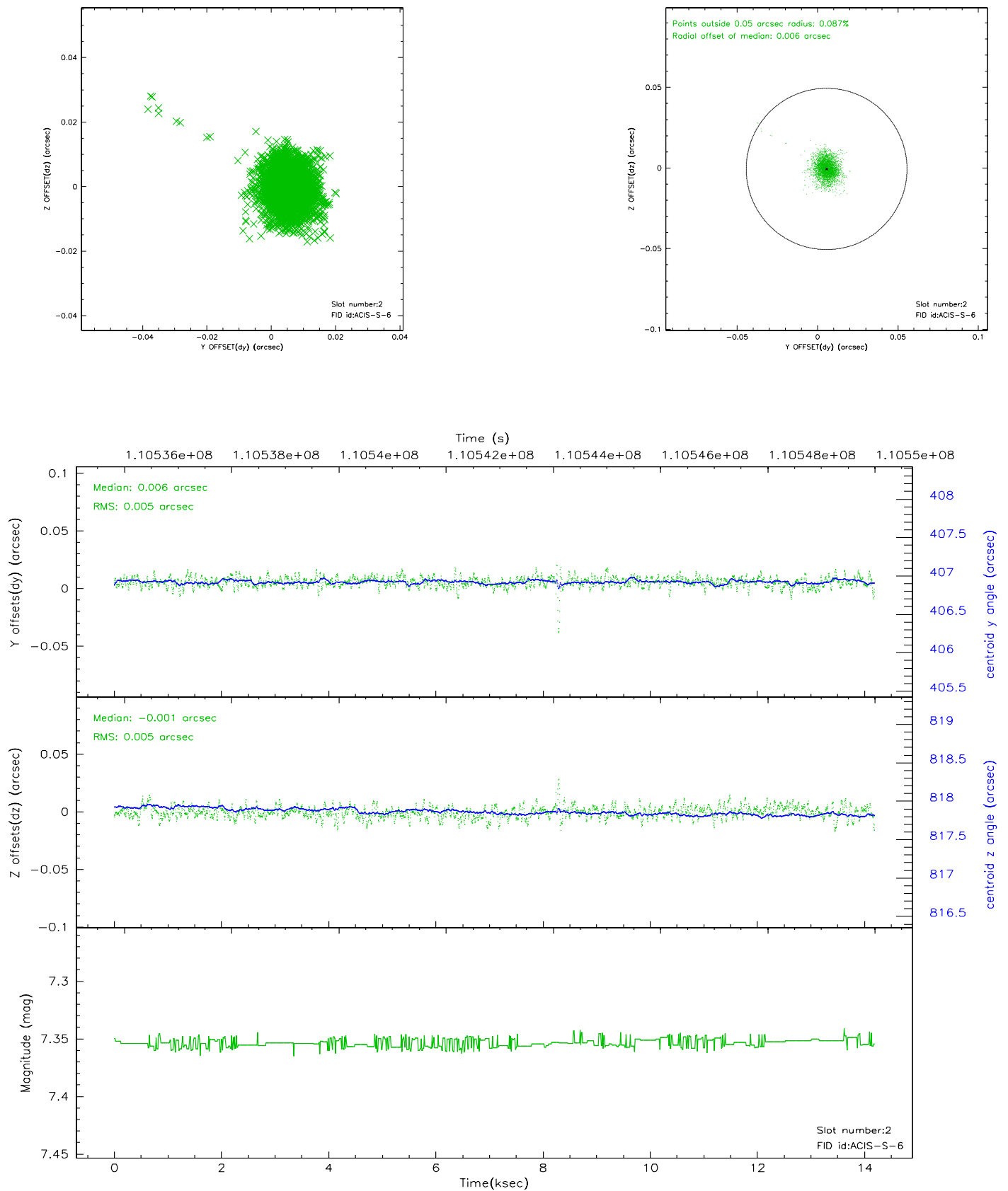
### 2.5.1 Slot 0



## 2.5.2 Slot 1

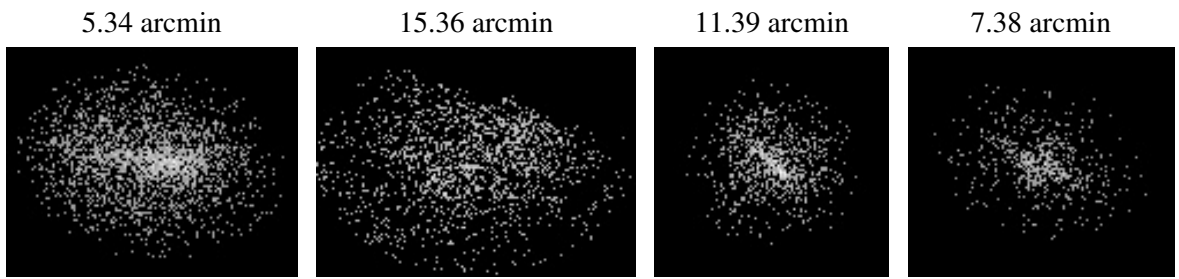


### 2.5.3 Slot 2





### 3 Point Sources



## A Summary

### A.1 Status

V&V Scientist	Beth Sundheim
V&V Date (YYYY-MM-DD)	2006.12.11
V&V Edition	1
V&V Disposition and Status	OK
V&V Charge Time	13.8

### A.2 Comments