

# V&V Reference Report

## L2 ASCDS Version : 7.6.10

Observation 2011 - L2 Version 001  
Chandra X-Ray Center

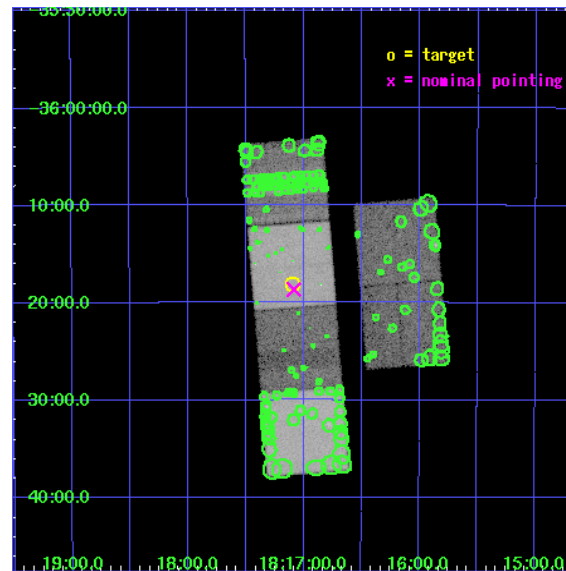
L2 Processing Date : Jan 10 2007

## Contents

<b>1</b>	<b>Front</b>	<b>2</b>
<b>2</b>	<b>OBI</b>	<b>3</b>
2.1	OBI . . . . .	3
2.1.1	Images . . . . .	3
2.1.2	Bias . . . . .	3
2.1.3	Parameters . . . . .	4
2.1.4	Events . . . . .	4
2.2	Compared Parameters . . . . .	5
2.3	Aspect . . . . .	6
2.4	Star Slots . . . . .	9
2.4.1	Slot 3 . . . . .	9
2.4.2	Slot 4 . . . . .	10
2.4.3	Slot 5 . . . . .	11
2.4.4	Slot 6 . . . . .	12
2.4.5	Slot 7 . . . . .	13
2.5	FID Slots . . . . .	14
2.5.1	Slot 0 . . . . .	14
2.5.2	Slot 1 . . . . .	15
2.5.3	Slot 2 . . . . .	16
<b>3</b>	<b>Point Sources</b>	<b>17</b>
<b>A</b>	<b>Summary</b>	<b>18</b>
A.1	Status . . . . .	18
A.2	Comments . . . . .	18

# 1 Front

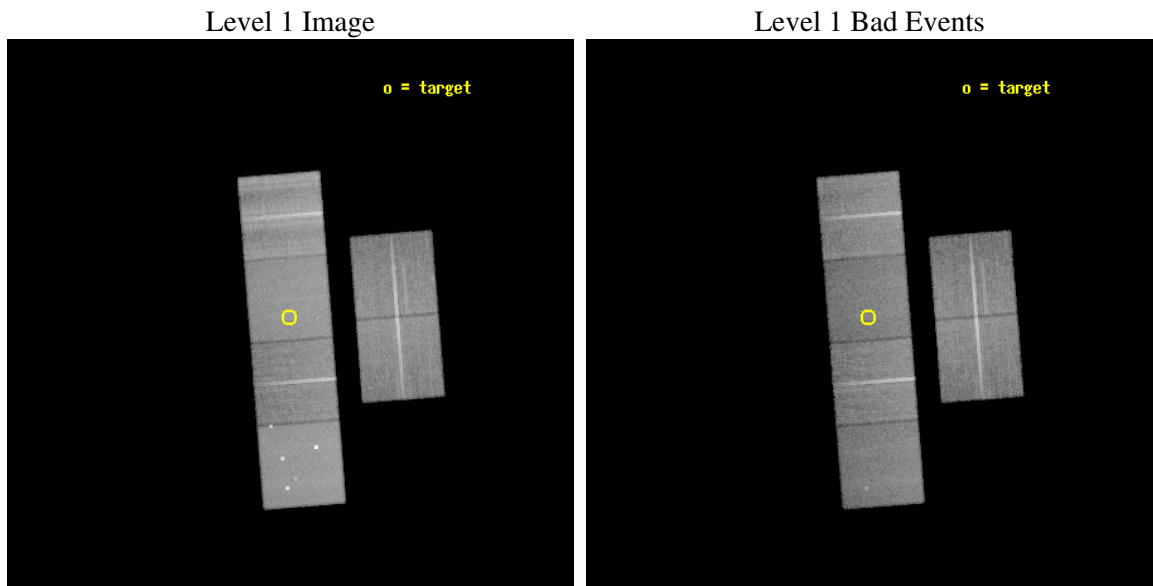
seq_num	500188
obs_id	2011
title	LET US EXAMINE SOME NEW ISOLATED NEUTRON STARS WITH CHANDRA
observer	Hakk Ogelman
object	PSR1813-36
dtcycle	0
cycle	P
ra_targ	274.274167
dec_targ	-36.301528
ra_nom	274.27109040368
dec_nom	-36.310953611431
roll_nom	265.4231562207
revision	2
ontime	29043.200027049
livetime	28675.437540591
ontime2	29043.200027049
ontime3	29043.200027049
ontime5	29043.200027049
ontime6	29039.9590967
ontime7	29043.200027049
ontime8	29043.200027049
l2events	349829



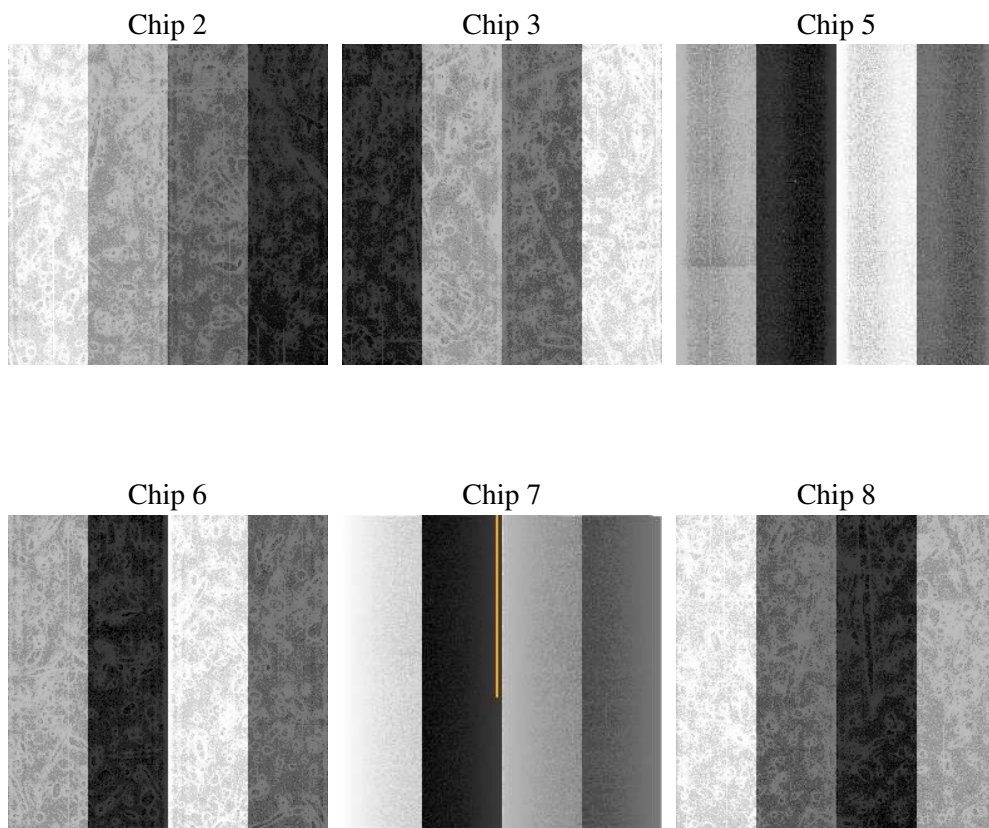
## 2 OBI

### 2.1 OBI

#### 2.1.1 Images



#### 2.1.2 Bias



### 2.1.3 Parameters

obi_num	1
ascdsver	7.6.10
caldsver	3.3.0
date	2007-01-11T02:43:33
revision	2

sched_exp_time	29100.000000
ontime	29043.200027049
ontime2	29043.200027049
ontime3	29043.200027049
ontime5	29043.200027049
ontime6	29039.9590967
ontime7	29043.200027049
ontime8	29043.200027049
l1events	1444792

### 2.1.4 Events

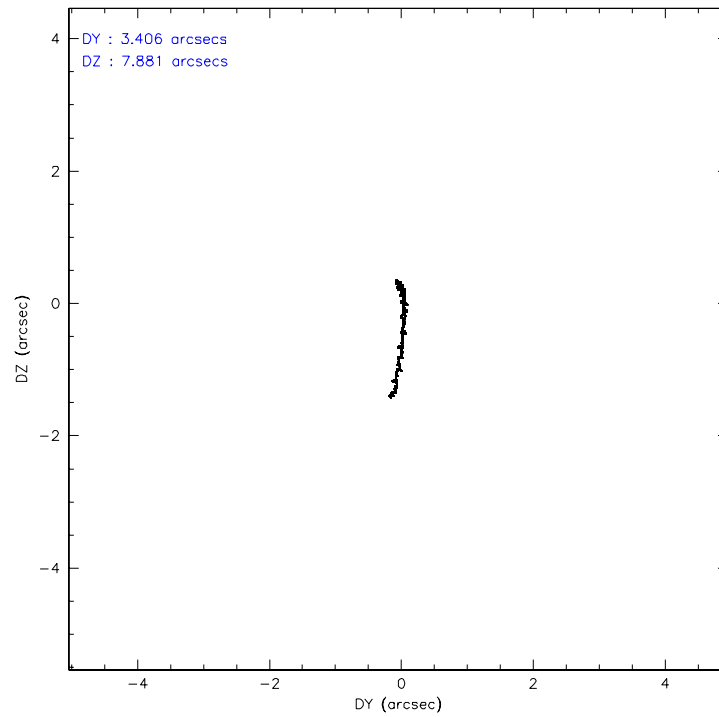
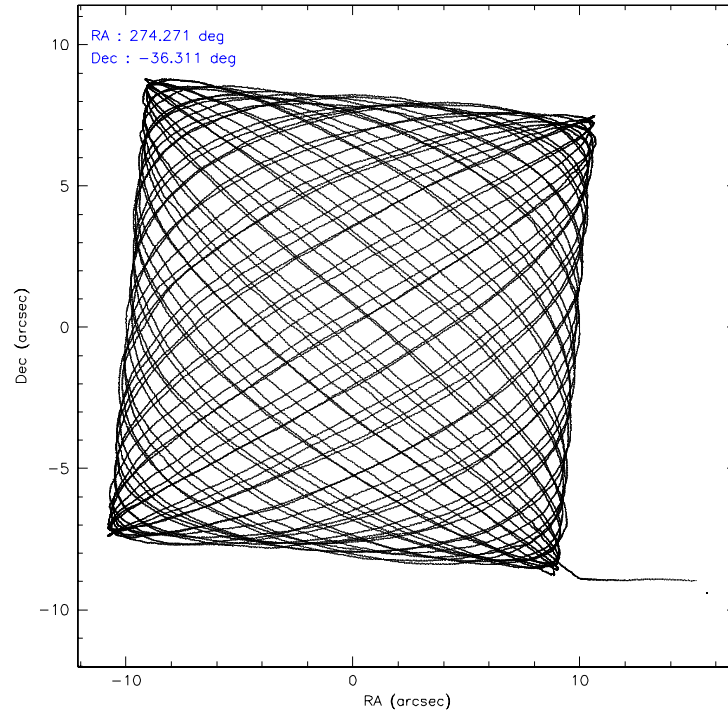
	ccd 2	ccd 3	ccd 5	ccd 6	ccd 7	ccd 8
level 1 events	210032	198191	284879	206247	249489	295954
rejected events	181932	170758	140661	177326	135599	198946
rejected %	86%	86%	49%	85%	54%	67%

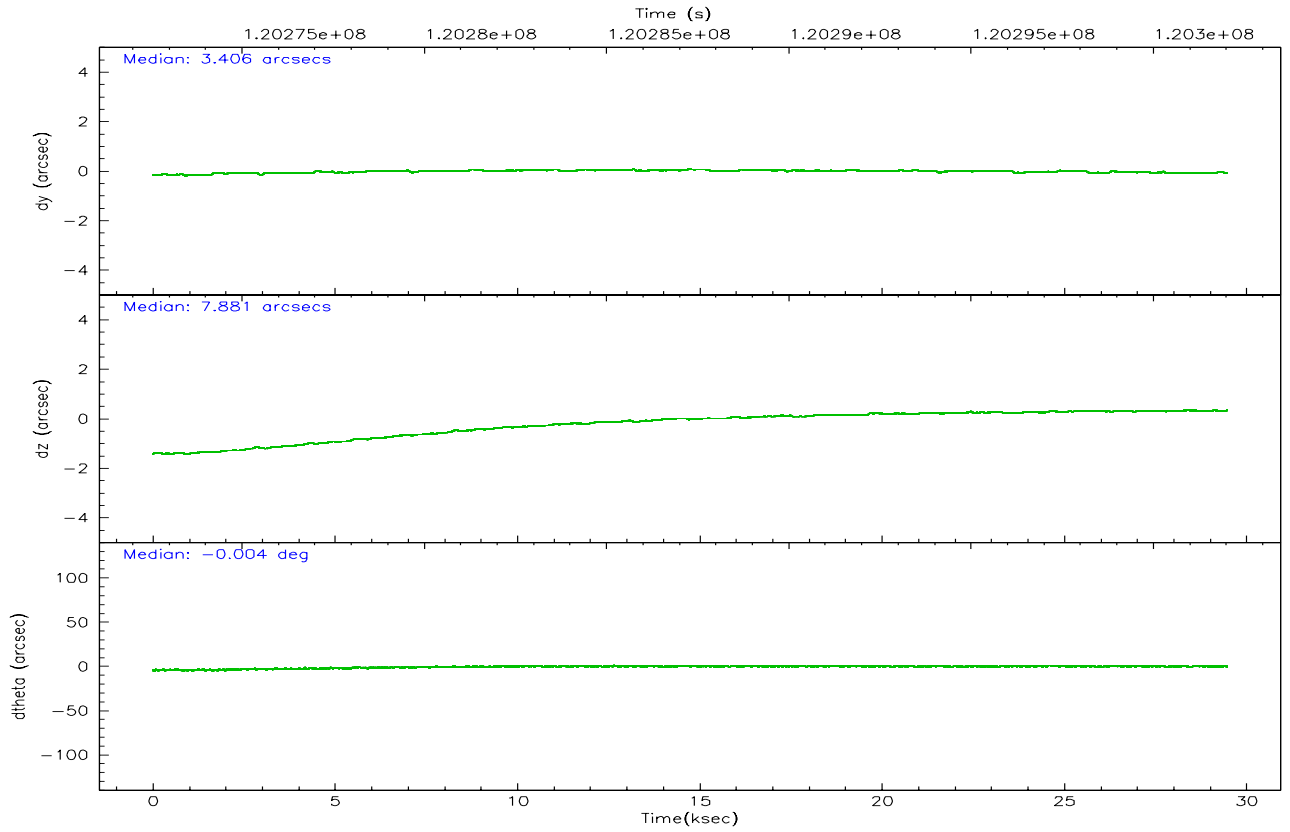
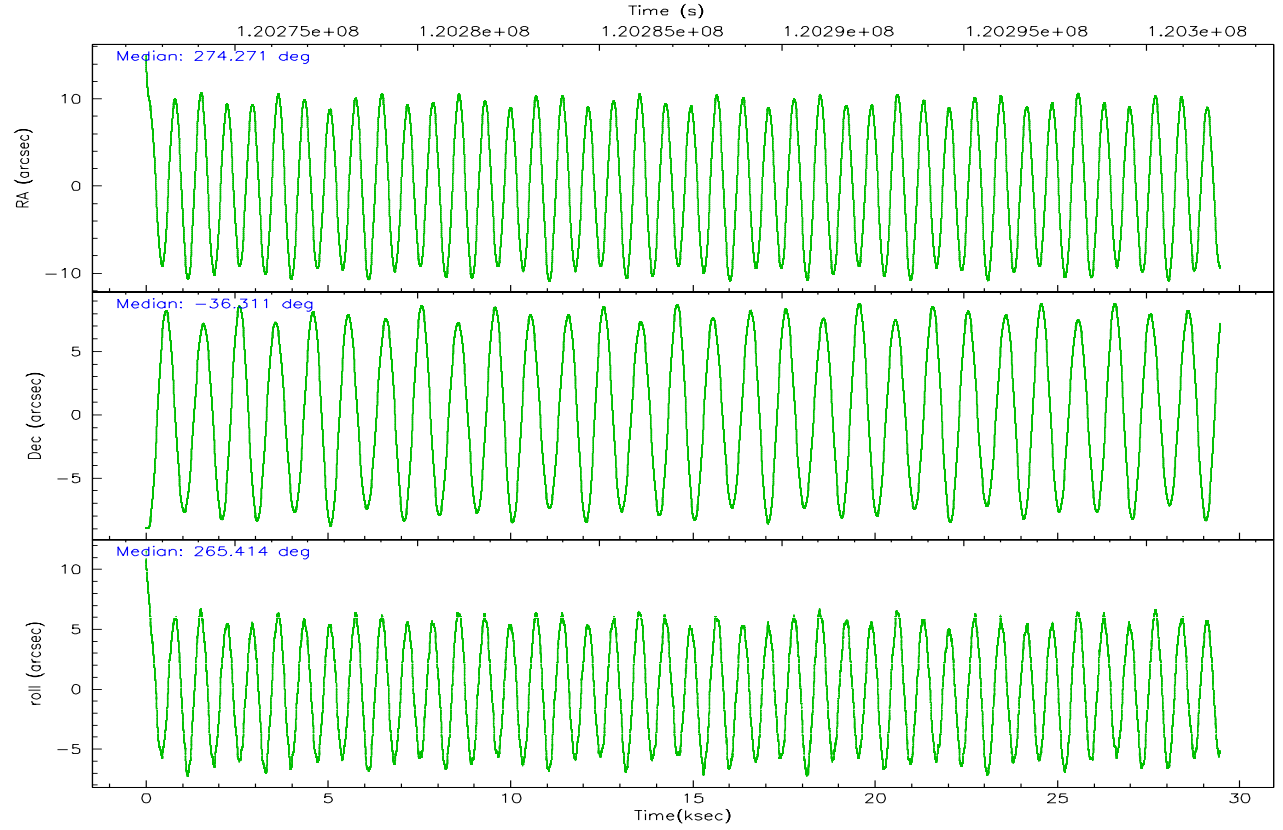
	ccd 2	ccd 3	ccd 5	ccd 6	ccd 7	ccd 8
grade 0 events	13491	13071	25748	13825	12849	33773
	6%	6%	9%	6%	5%	11%
grade 1 events	116	107	770	113	224	332
	0%	0%	0%	0%	0%	0%
grade 2 events	5991	5477	40511	5847	23577	16226
	2%	2%	14%	2%	9%	5%
grade 3 events	2011	2117	6612	2286	10360	14247
	0%	1%	2%	1%	4%	4%
grade 4 events	2225	2191	6302	2213	10252	12774
	1%	1%	2%	1%	4%	4%
grade 5 events	6176	6796	20095	7537	22276	10259
	2%	3%	7%	3%	8%	3%
grade 6 events	4391	4590	65068	4755	56872	19992
	2%	2%	22%	2%	22%	6%
grade 7 events	175631	163842	119773	169671	113079	188351
	83%	82%	42%	82%	45%	63%

## 2.2 Compared Parameters

Parameter	Planned	Actual	Parameter	Planned	Actual
Instrument	ACIS	ACIS	Obspar format version number	6	6
Detector	ACIS-235678	ACIS-235678	Obspar file type	PREDICTED	ACTUAL
Grating	NONE	NONE	Obspar update status	NONE	UPDATED
Data mode	FAINT	FAINT	Number of optional ACIS chips dropped	0	0
Observation mode	POINTING	POINTING	On-chip summing requested	N	N
Pointing RA	274.256220	274.2710904036767	Subarray requested	NONE	NONE
Pointing Dec	-36.286451	-36.31095361143088	Alternating exposures requested	N	N
Pointing Roll	265.257728	265.4231562206974	Primary exposure time	0.000000	3.2
SIM focus pos (mm)	-0.684267	-0.6828225247311905			
SIM defocus (mm)	0	0.001444936568705701			
SIM translation stage pos (mm)	-190.132523	-190.1400660498719			
SIM translation stage offset (mm)	0	0.00754346686406393			
Observation start time	120272923.184000	120271870.42369			
Observation start date	2001-10-24T01:07:39	2001-10-24T00:51:10			
Observation end time	120302023.184000	120302426.1874			
Observation end date	2001-10-24T09:12:39	2001-10-24T09:20:26			
Read mode	TIMED	TIMED			

## 2.3 Aspect





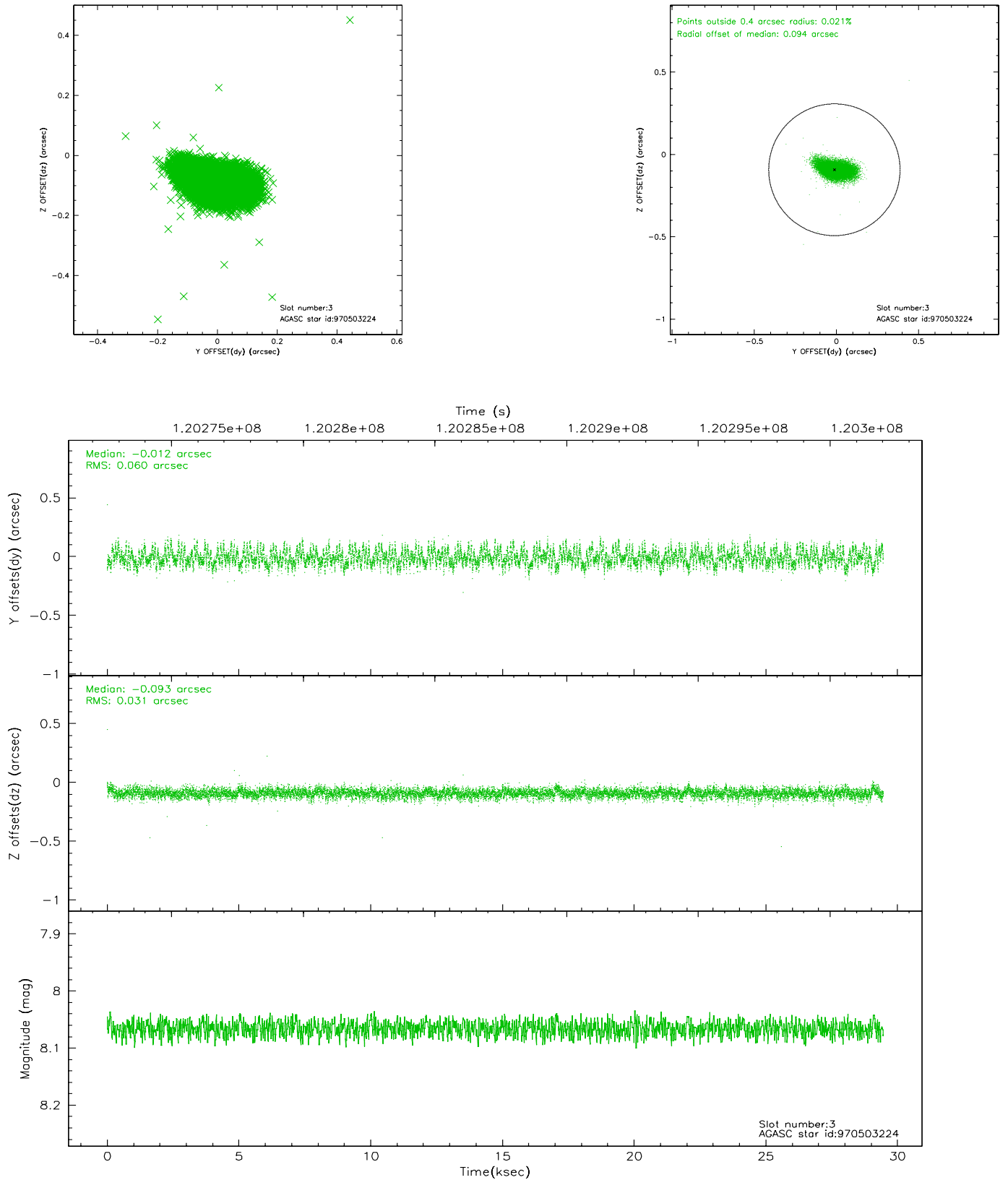
### Slot Statistics

slot	status	id	mag	n_pts	med_dy	med_dz	dr1	dr2	ra	dec	mean_y	mean_z
0	FID	ACIS-S-2	7.11	7186	0.012	0.018	0.010	0.024	0.000000	0.000000	-756.04	-1728.81
1	FID	ACIS-S-4	7.19	7185	-0.067	-0.010	0.006	0.011	0.000000	0.000000	2157.13	179.55
2	FID	ACIS-S-5	7.24	7184	0.026	0.002	0.010	0.022	0.000000	0.000000	-1808.76	173.33
3	GUIDE	970503224	8.07	14371	-0.012	-0.093	0.070	0.122	273.360263	-36.731322	1822.36	-2442.18
4	GUIDE	970502008	8.12	14371	-0.205	-0.040	0.066	0.100	273.802762	-35.819118	-1563.89	-1458.03
5	GUIDE	970588736	8.33	14372	0.030	0.161	0.051	0.082	274.990202	-36.889326	1995.97	2287.13
6	GUIDE	970467240	8.76	14373	0.242	-0.135	0.088	0.141	273.523580	-36.872014	2284.11	-1927.01
7	GUIDE	970617088	9.05	14369	-0.052	0.106	0.118	0.186	275.009017	-36.035984	-1071.46	2110.43

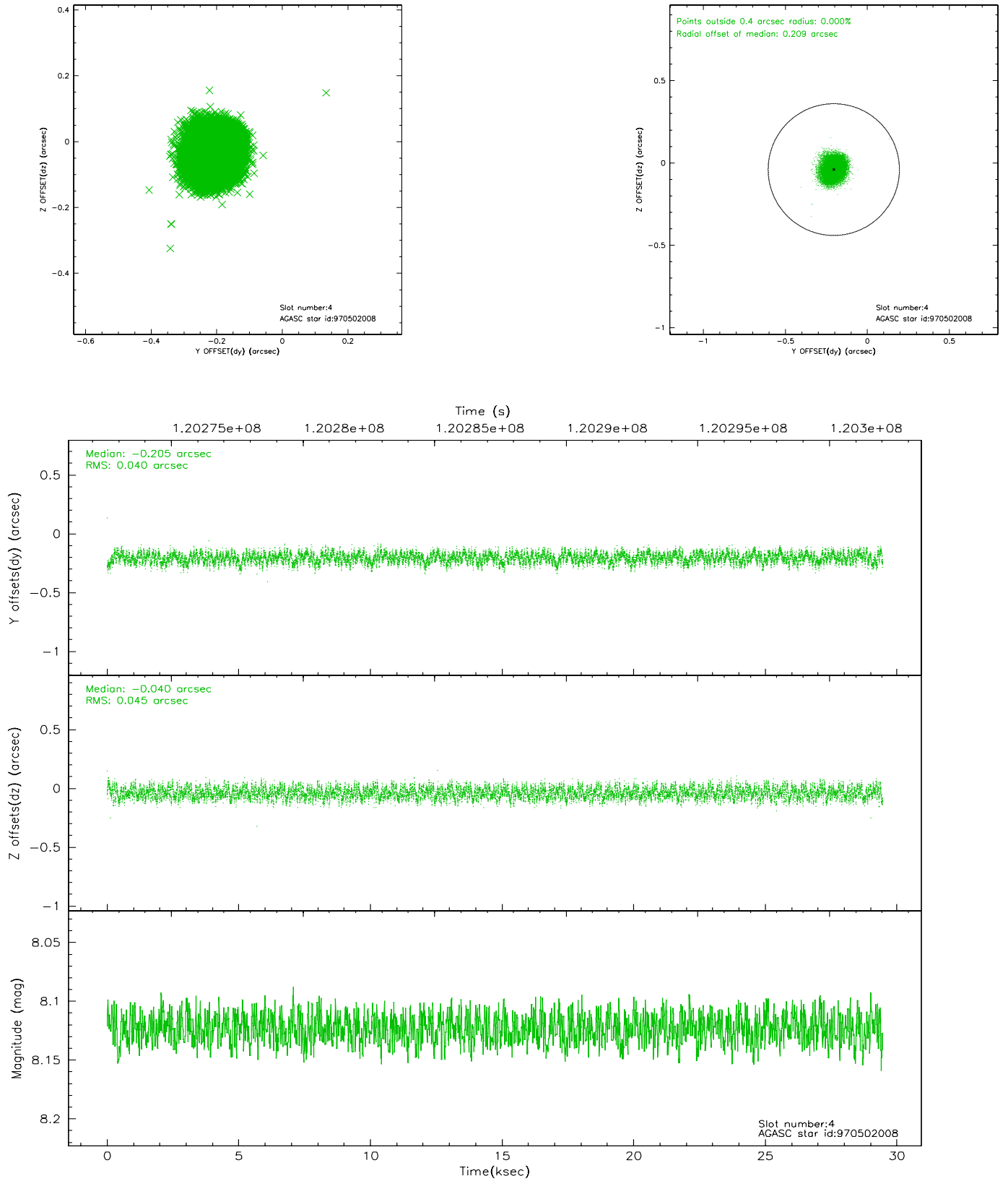


## 2.4 Star Slots

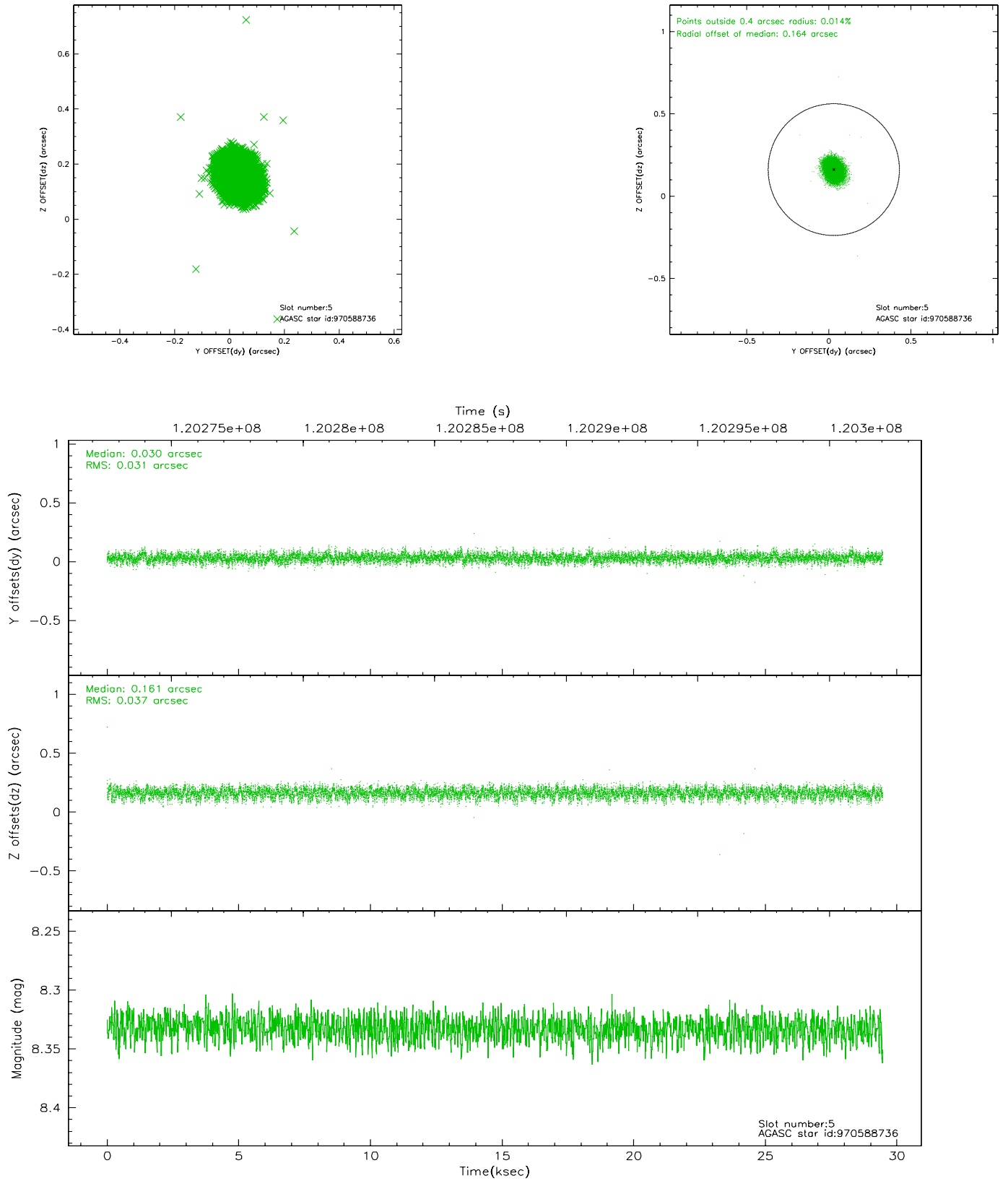
### 2.4.1 Slot 3



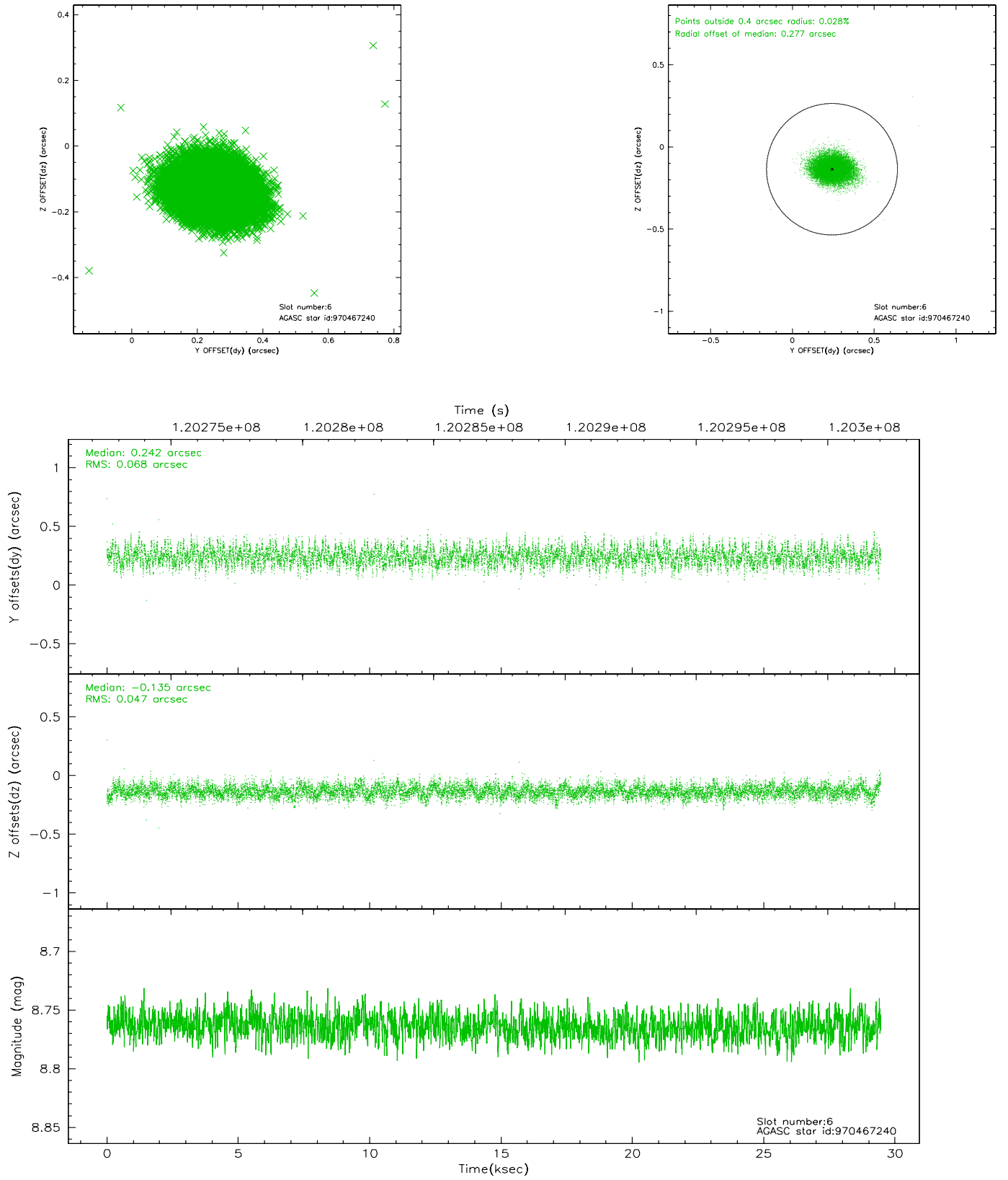
## 2.4.2 Slot 4



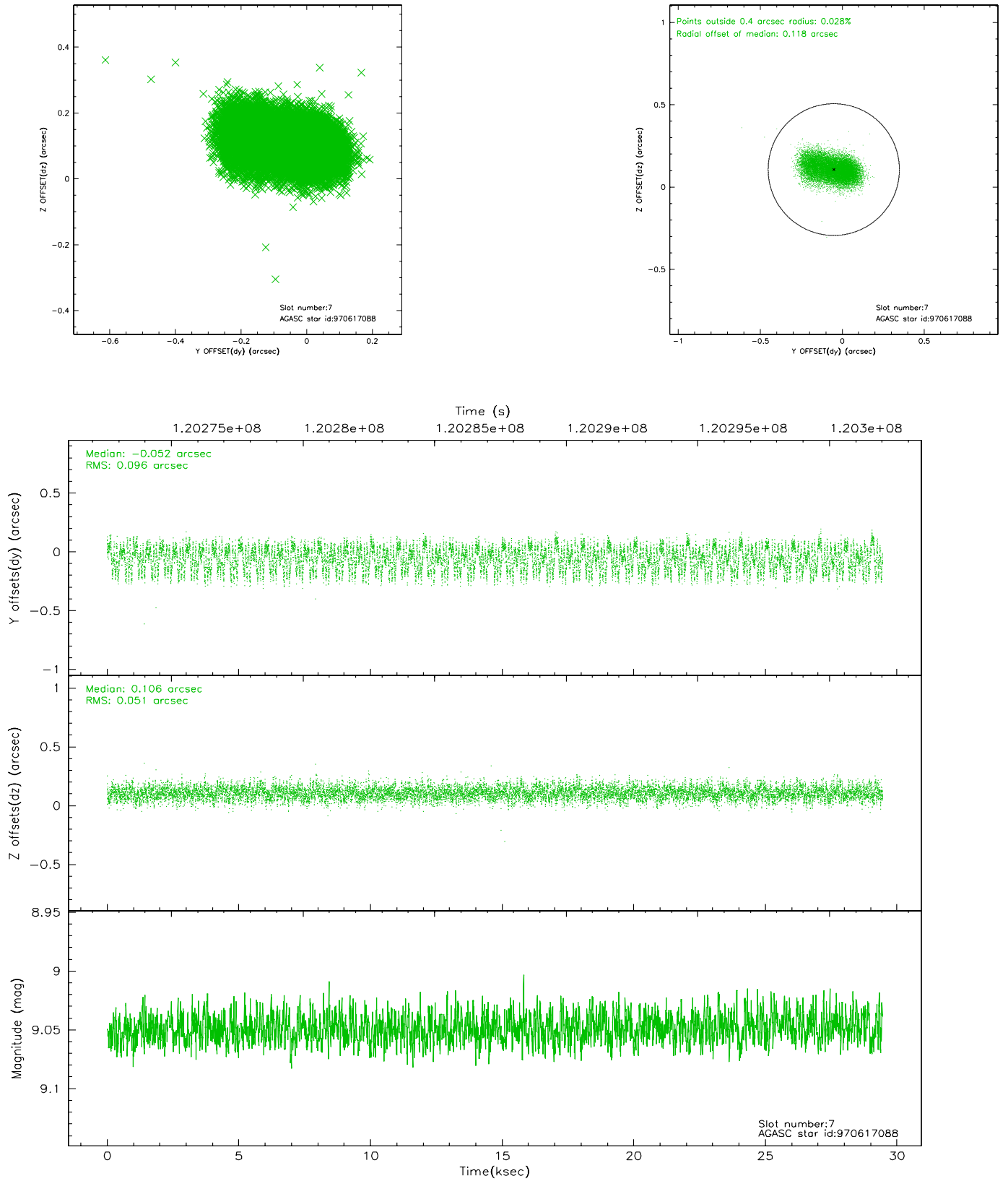
### 2.4.3 Slot 5



## 2.4.4 Slot 6

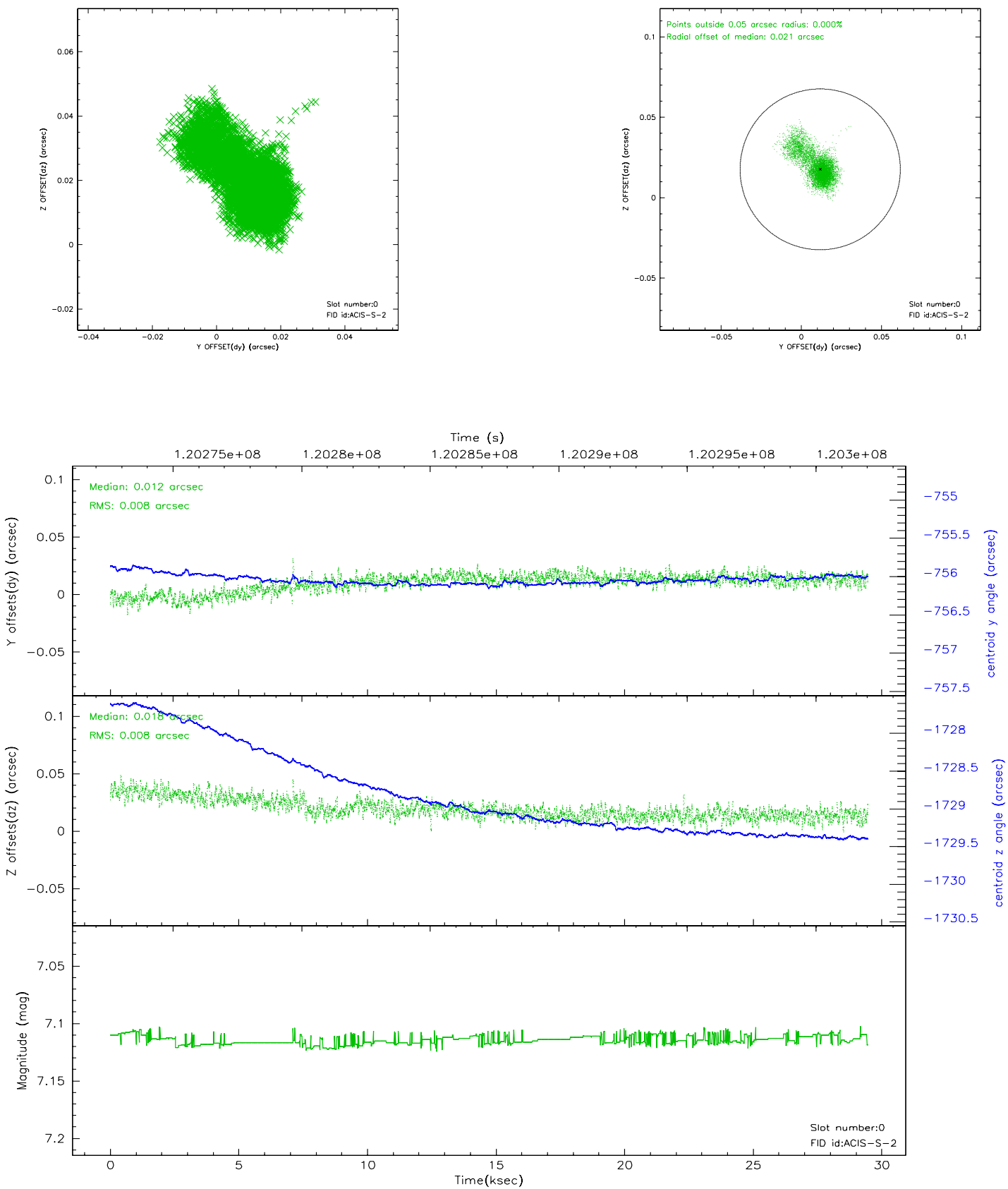


## 2.4.5 Slot 7

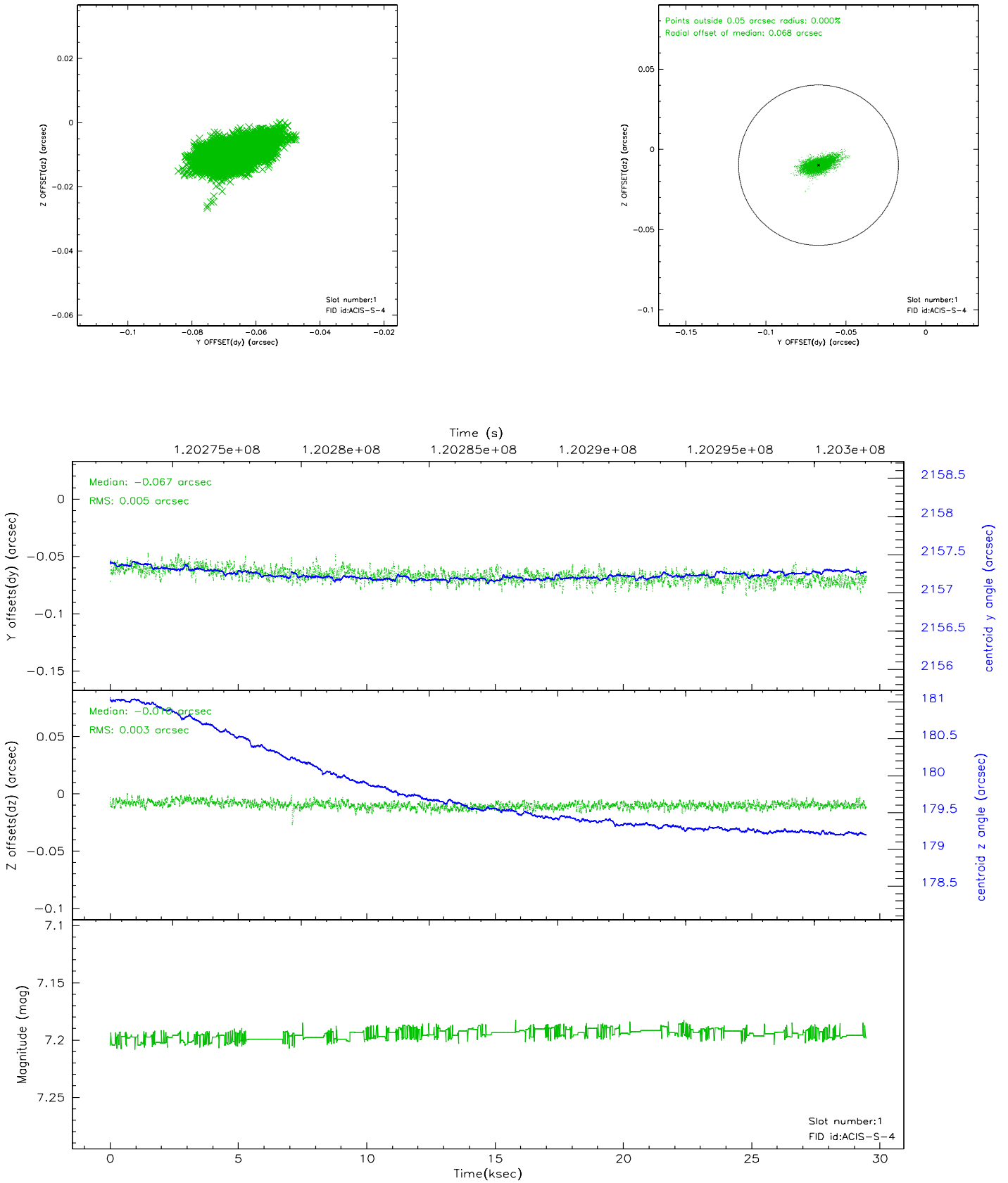


## 2.5 FID Slots

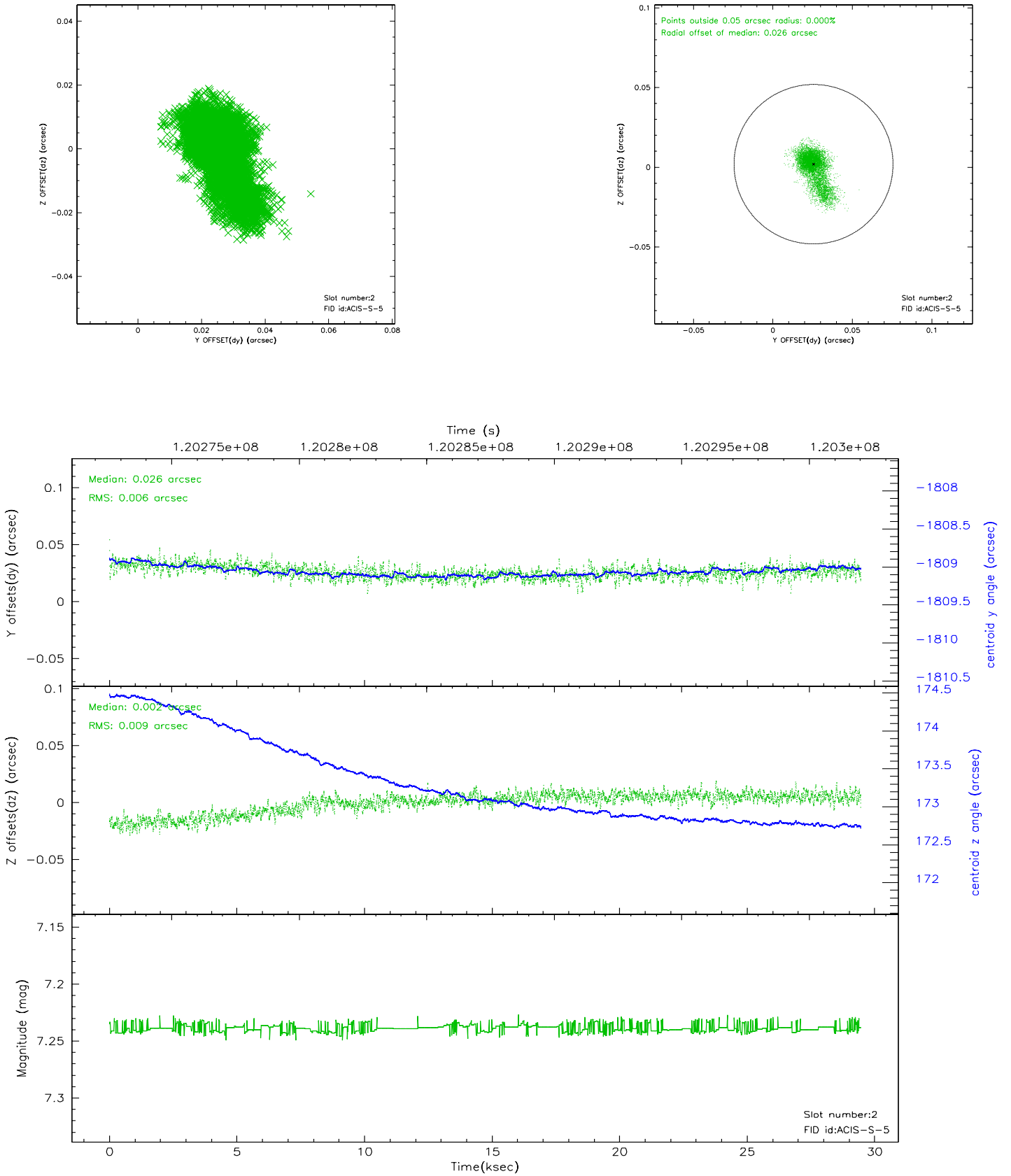
### 2.5.1 Slot 0



## 2.5.2 Slot 1

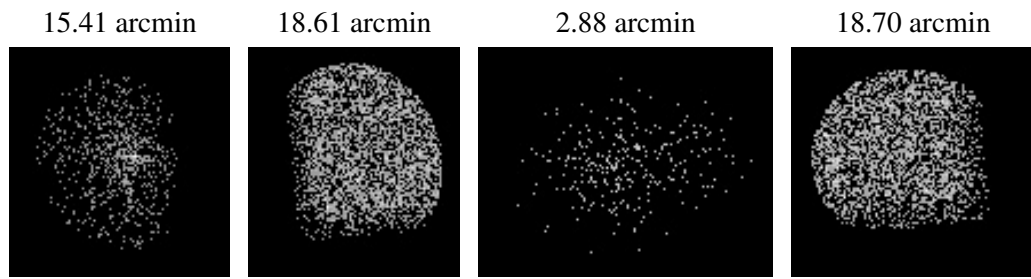


### 2.5.3 Slot 2





### 3 Point Sources



## A Summary

### A.1 Status

V&V Scientist	Jen Lauer
V&V Date (YYYY-MM-DD)	2007.01.11
V&V Edition	1
V&V Disposition and Status	OK
V&V Charge Time	29.046

### A.2 Comments