

V&V Reference Report

L2 ASCDS Version : 10.4.3.1

Observation 18811 - L2 Version 1
Chandra X-Ray Center

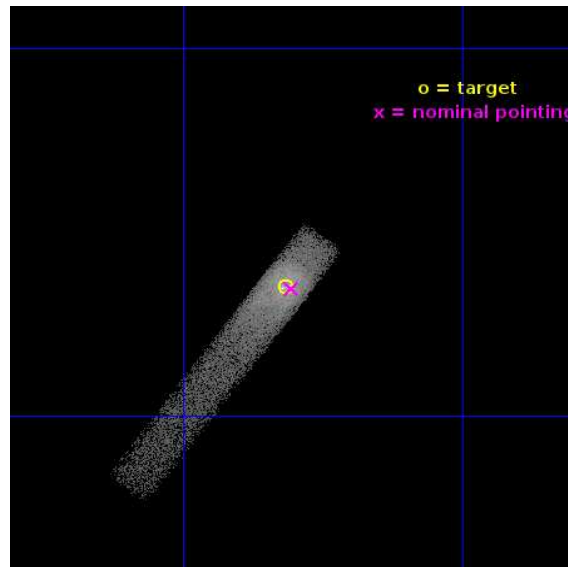
L2 Processing Date : Mar 14 2016

Contents

1	Front	2
2	OBI	3
2.1	OBI	3
2.1.1	Images	3
2.1.2	Bias	3
2.1.3	Parameters	4
2.1.4	Events	4
2.2	Compared Parameters	5
2.3	Aspect	6
2.4	Star Slots	9
2.4.1	Slot 3	9
2.4.2	Slot 4	10
2.4.3	Slot 5	11
2.4.4	Slot 6	12
2.4.5	Slot 7	13
2.5	FID Slots	14
2.5.1	Slot 0	14
2.5.2	Slot 1	15
2.5.3	Slot 2	16
A	Summary	17
A.1	Status	17
A.2	Comments	17

1 Front

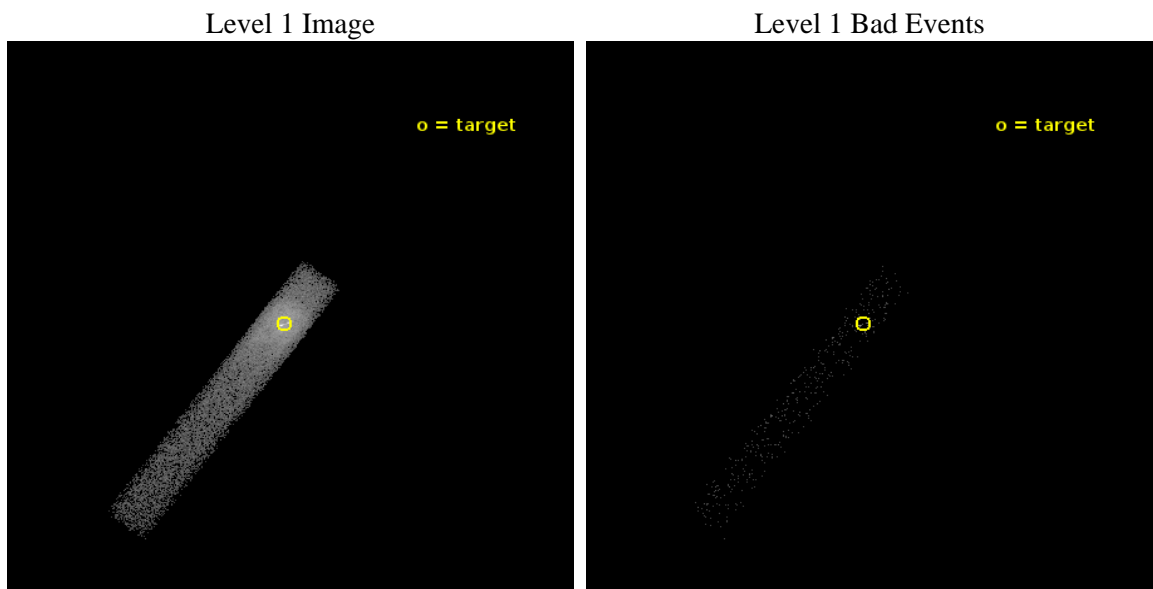
seq_num	703299	Sequence number
obs_id	18811	Observation id
title	Detecting an X-ray Counterpart to an Active TeV Flaring Event in the M87 Jet	Proposal title
observer	C. (Teddy) Cheung	Principal investigator
object	M87	Source name
dtcycle	0	
cycle	P	events from which exps? Prim/Second/Both
ra_targ	187.704167	Observer's specified target RA [deg]
dec_targ	12.391667	Observer's specified target Dec [deg]
ra_nom	187.70151285315	Nominal RA [deg]
dec_nom	12.390844060503	Nominal Dec [deg]
roll_nom	126.81483820494	Nominal Roll [deg]
revision	1	Processing version of data
ontime	5069.1996977329	Sum of GTIs [s]
livetime	4597.4965515445	Livetime [s]
ontime7	5069.1996977329	Sum of GTIs [s]
l2events	32941	Number of level 2 events



2 OBI

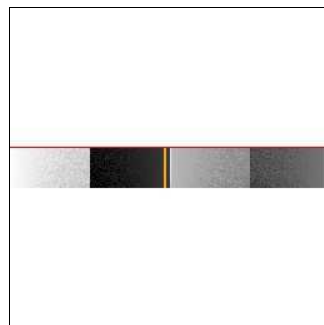
2.1 OBI

2.1.1 Images



2.1.2 Bias

Chip 7



2.1.3 Parameters

obi_num	0	Obi number	sched_exp_time	5000.000000	[s] Scheduled observation exposure time
ascdsver	10.4.3.1	Processing system revision	ontime	5069.1996977329	Sum of GTIs [s]
caldsver	4.7.0	 	ontime7	5069.1996977329	Sum of GTIs [s]
date	2016-03-15T02:14:12	Date and time of file creation	l1events	36122	Number of level 1 events
revision	1	Processing version of data			

2.1.4 Events

	ccd 7
level 1 events	36122
rejected events	2863
rejected %	7%

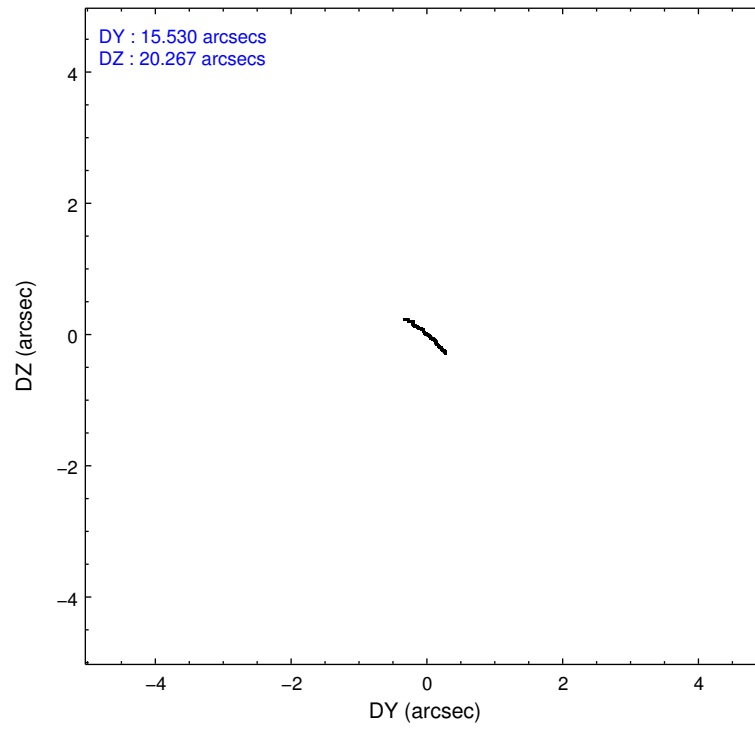
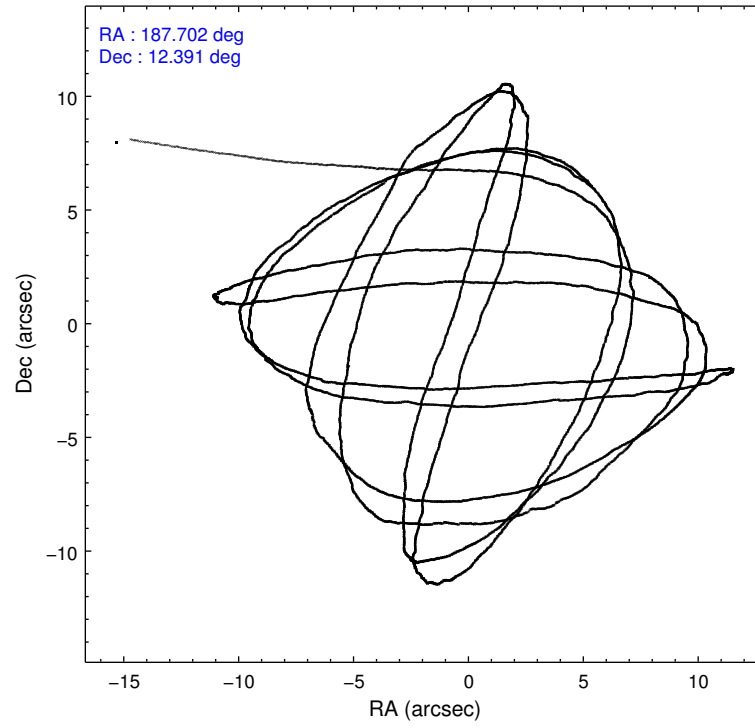
	ccd 7
grade 0 events	9325
	25%
grade 1 events	20
	0%
grade 2 events	8630
	23%
grade 3 events	4037
	11%
grade 4 events	3910
	10%
grade 5 events	754
	2%
grade 6 events	7361
	20%
grade 7 events	2085
	5%

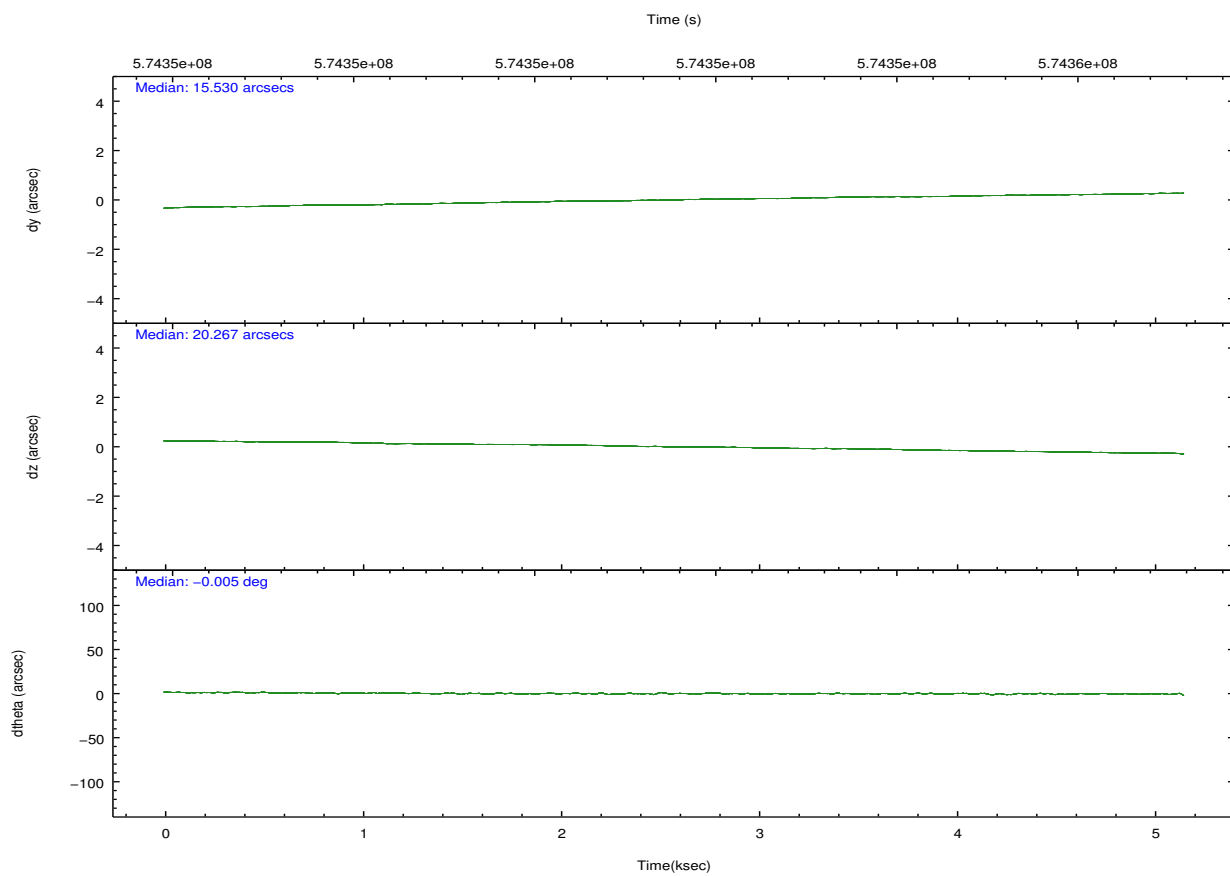
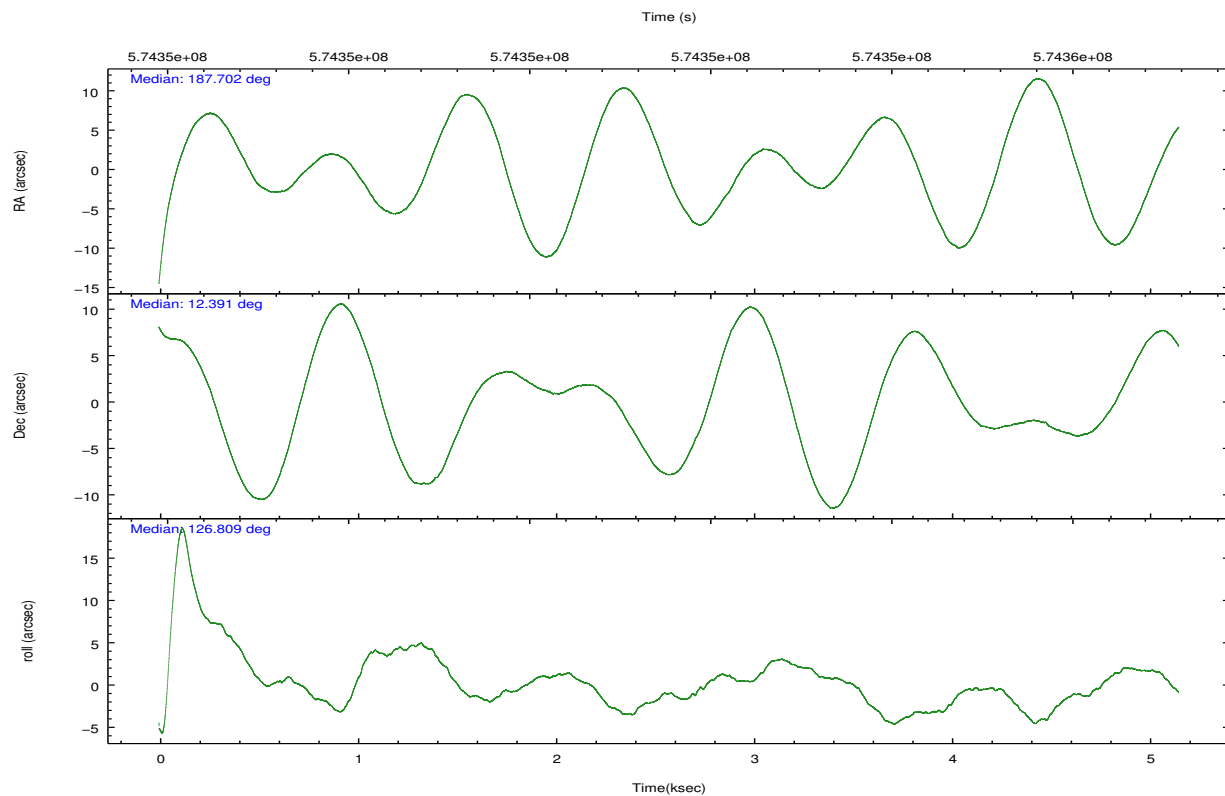
2.2 Compared Parameters

Parameter	Planned	Actual
Instrument	ACIS	ACIS
Detector	ACIS-7	ACIS-7
Grating	NONE	NONE
Data mode	FAINT	FAINT
Observation mode	POINTING	POINTING
[deg] Pointing RA	187.727505	187.7015128531501
[deg] Pointing Dec	12.380310	12.3908440605033
[deg] Pointing Roll	126.652710	126.8148382049435
[mm] SIM focus pos	-0.684267	-0.6828225247311905
[mm] SIM defocus	0	0.001444936568705701
[mm] SIM translation stage pos	-190.132523	-190.1425803651734
[mm] SIM translation stage offset	0	0.01005778216563158
[s] Observation start time (MET)	574350350.184000	574349182.5493
Observation start date	2016-03-14T13:44:42	2016-03-14T13:26:22
[s] Observation end time (MET)	574355350.184000	574355796.36217
Observation end date	2016-03-14T15:08:02	2016-03-14T15:16:36
Read mode	TIMED	TIMED

Parameter	Planned	Actual
Obspar format version number	7	7
Obspar file type	PREDICTED	ACTUAL
Obspar update status	NONE	UPDATED
Number of optional ACIS chips dropped	0	0
On-chip summing requested	N	N
Subarray requested	CUSTOM	1/8
Subarray start row	449	449
Subarray row count	128	128
Alternating exposures requested	N	N
[s] Primary exposure time	0.000000	0.4

2.3 Aspect



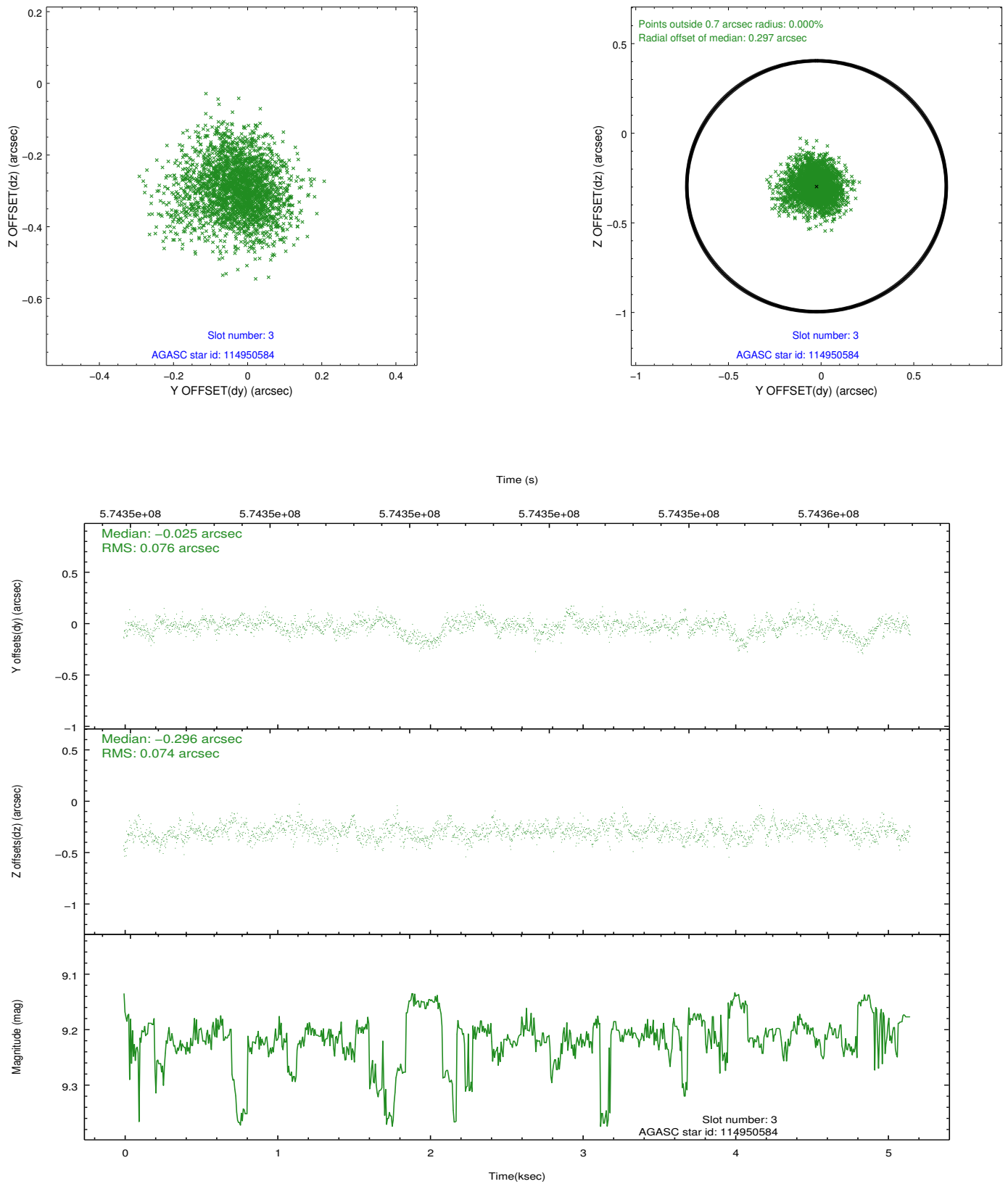


Slot Statistics

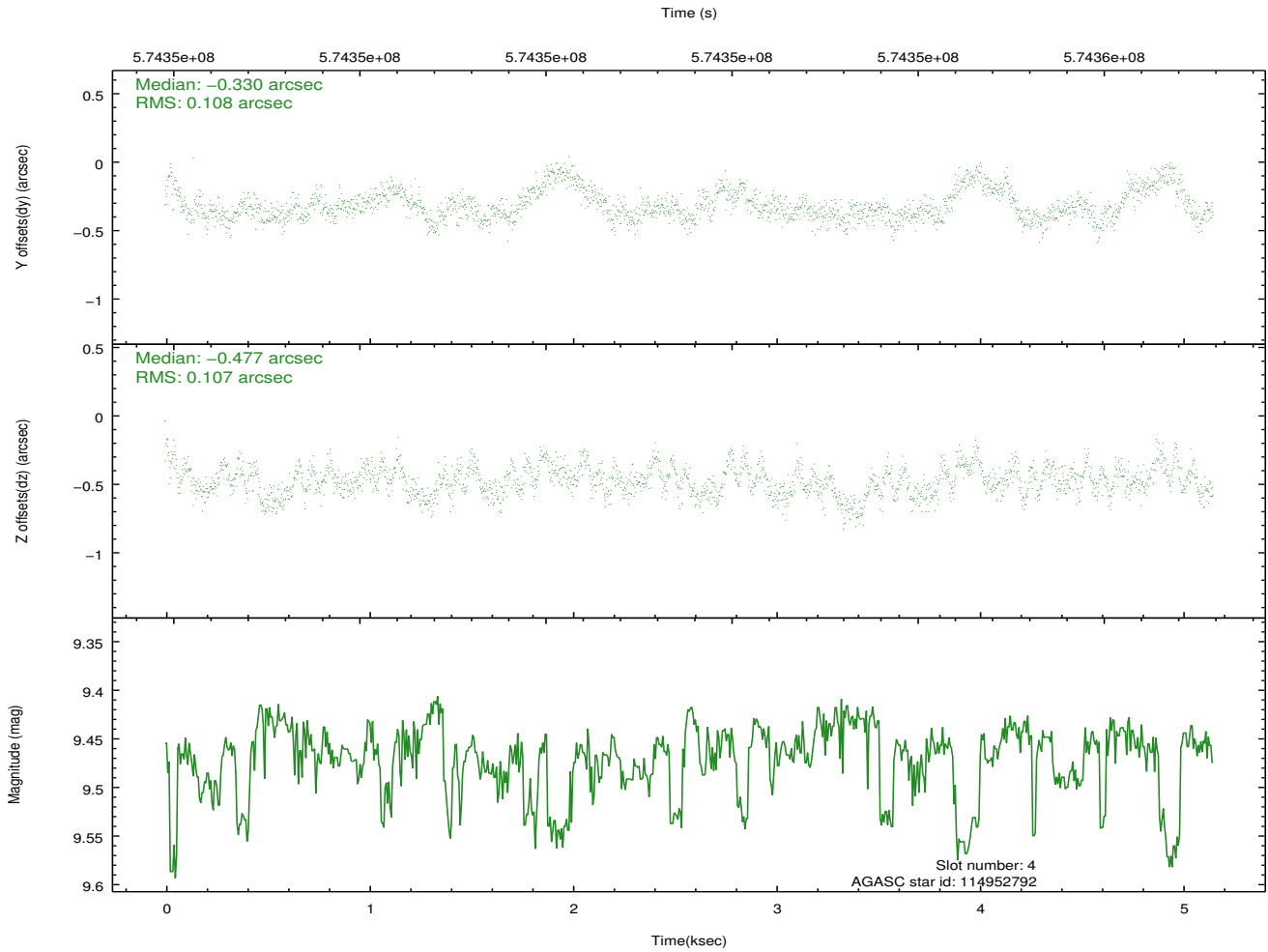
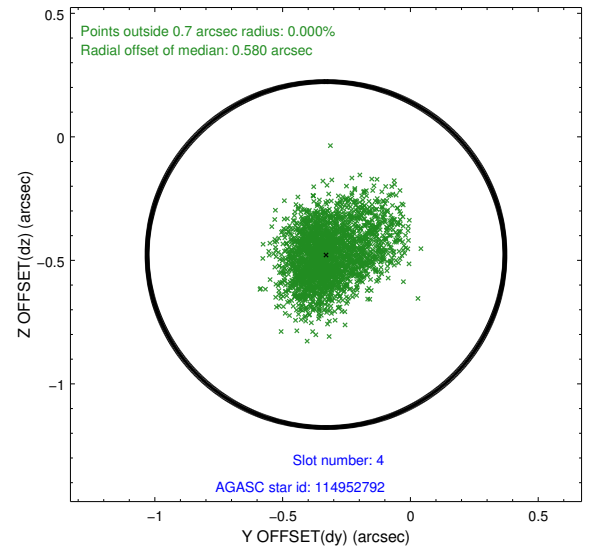
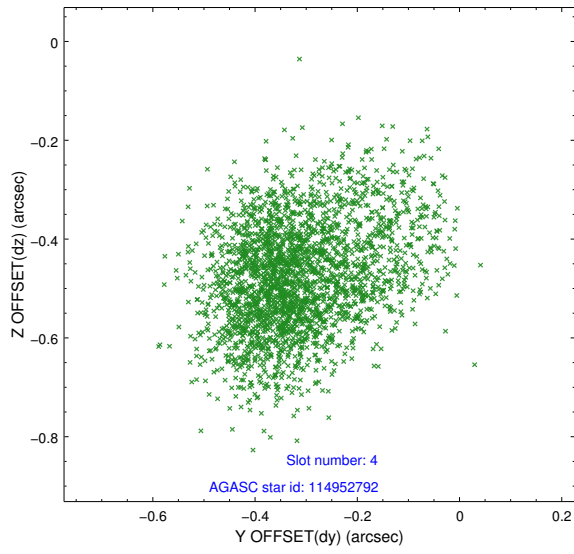
slot	status	used	id	mag	n_pts	med_dy	med_dz	dr1	dr2	ra	dec	mean_y	mean_z
0	FID		ACIS-S-2	7.11	1257	-0.219	-0.105	0.008	0.014	0.000000	0.000000	-768.71	-1741.84
1	FID		ACIS-S-4	7.21	1257	0.474	0.134	0.006	0.012	0.000000	0.000000	2144.70	165.68
2	FID		ACIS-S-5	7.23	1257	-0.286	-0.020	0.008	0.017	0.000000	0.000000	-1820.13	160.50
3	GUIDE	used	114950584	9.21	2512	-0.025	-0.296	0.111	0.186	187.487323	11.827248	-1091.90	1867.67
4	GUIDE	used	114952792	9.47	2509	-0.330	-0.477	0.160	0.273	187.070263	12.344747	1278.71	1931.34
5	GUIDE	used	114952824	8.55	2512	-0.163	0.294	0.114	0.173	187.703904	12.486727	357.46	-160.24
6	GUIDE	used	114955056	8.32	2514	0.528	0.604	0.096	0.159	187.914001	12.127854	-1120.06	16.63
7	GUIDE	used	114956608	9.64	2510	-0.025	-0.144	0.173	0.296	187.452443	11.725979	-1311.10	2185.17

2.4 Star Slots

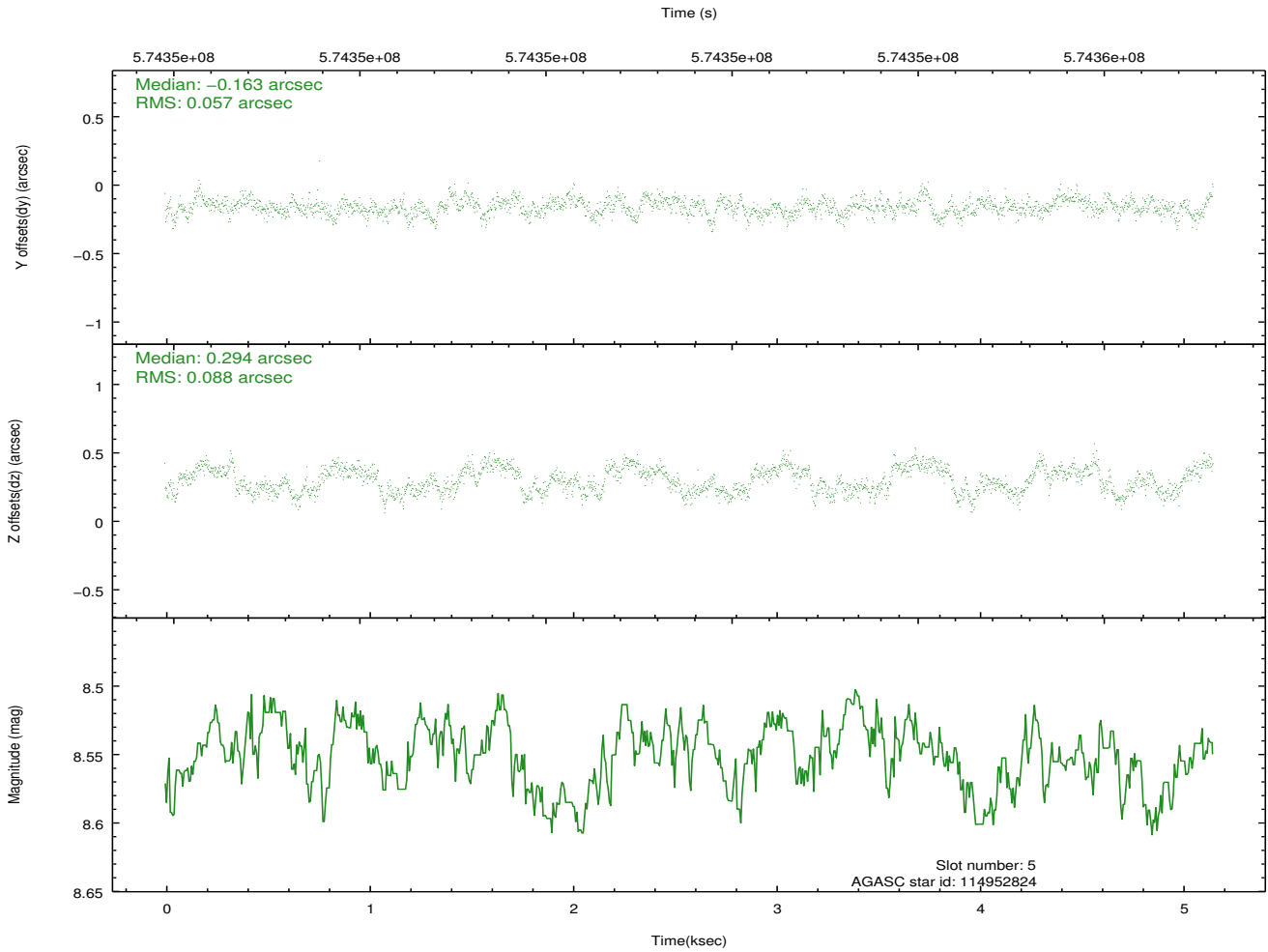
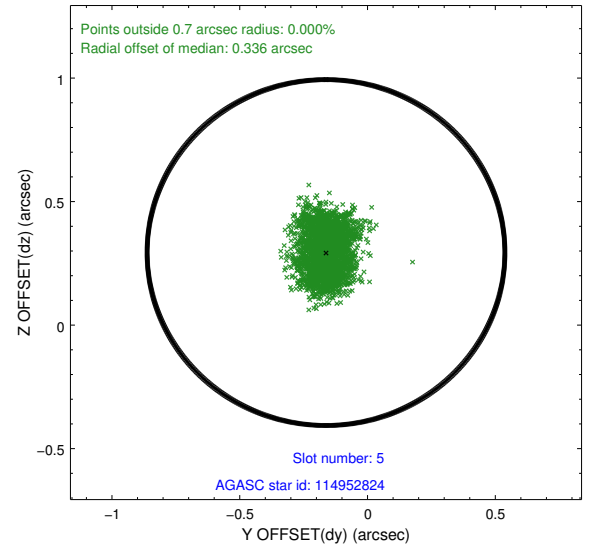
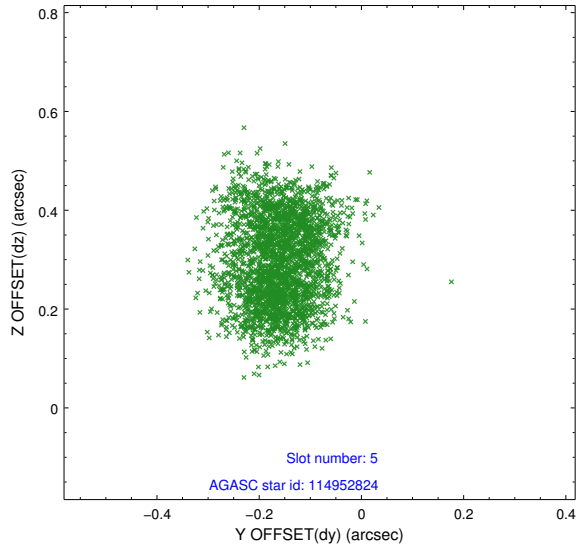
2.4.1 Slot 3



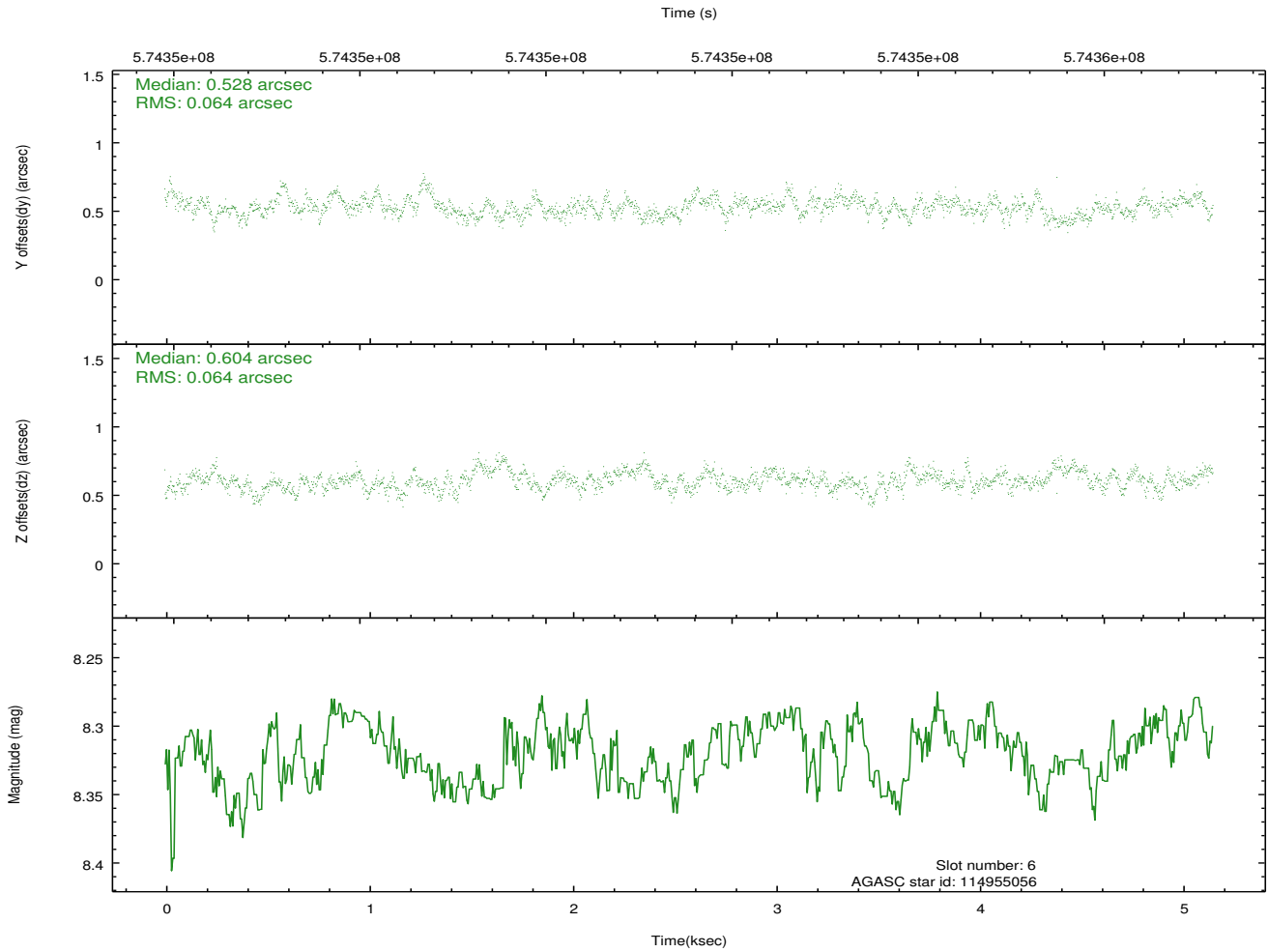
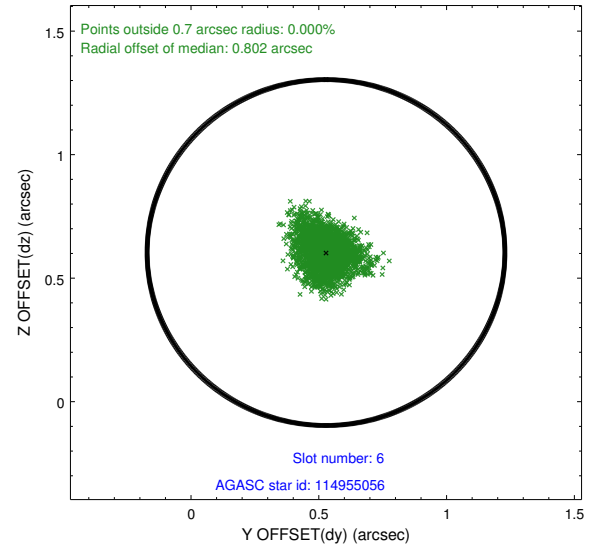
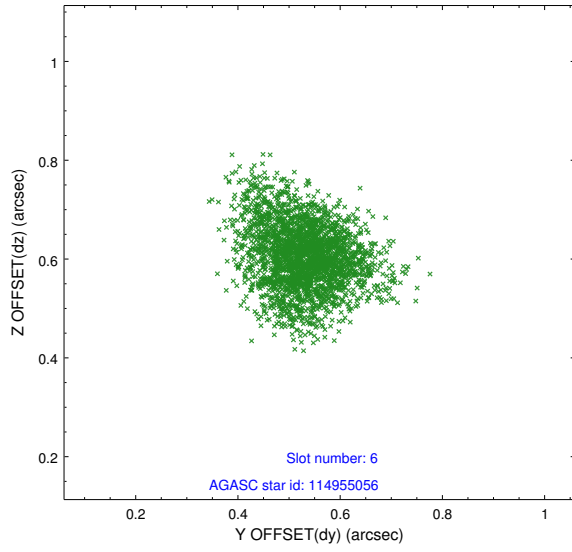
2.4.2 Slot 4



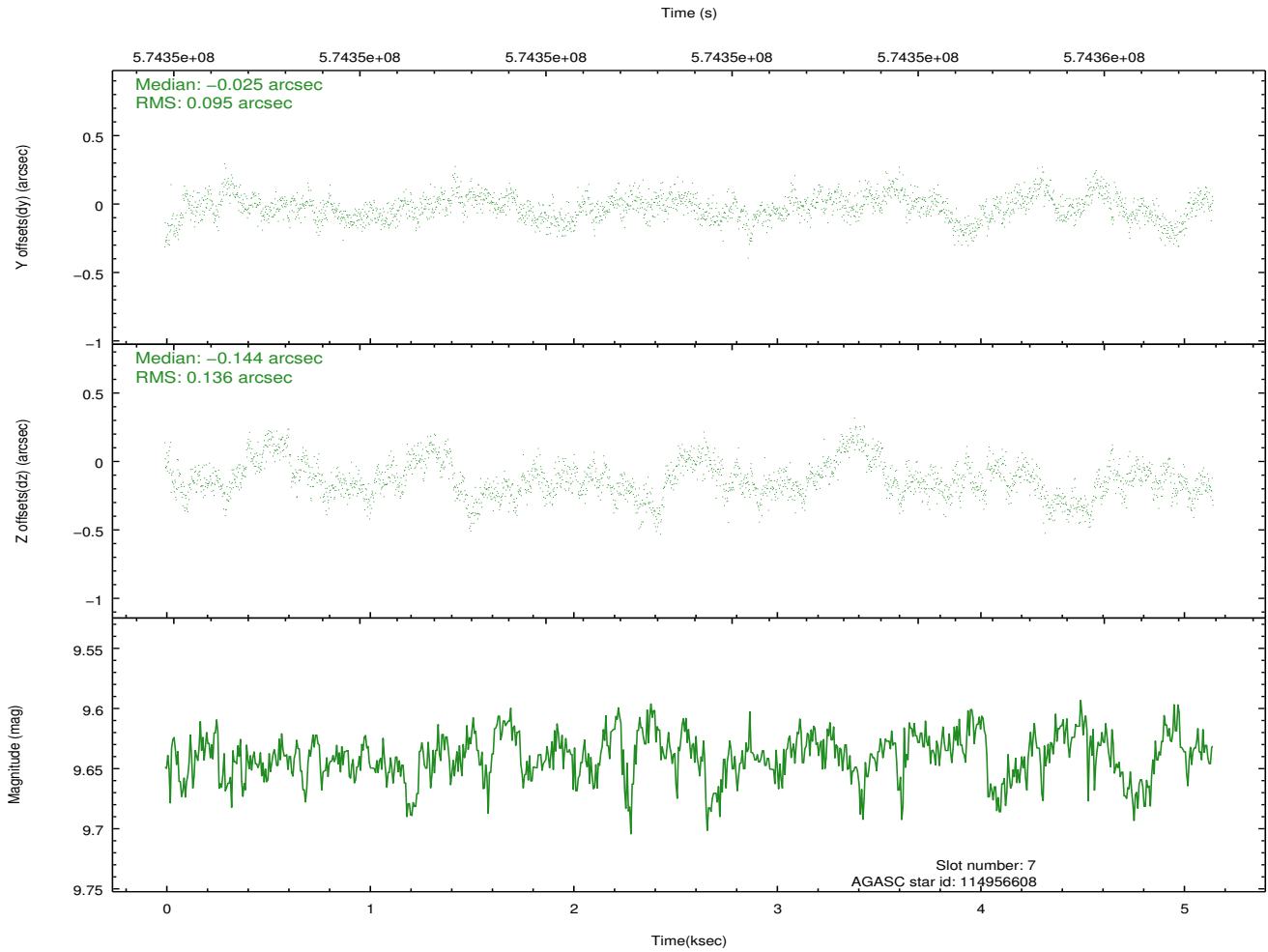
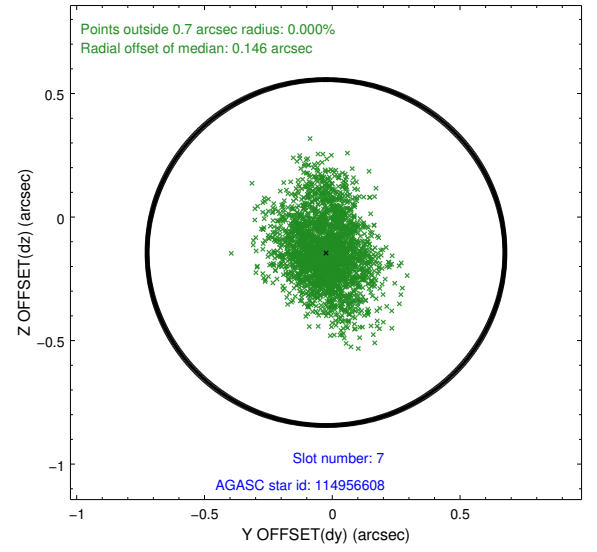
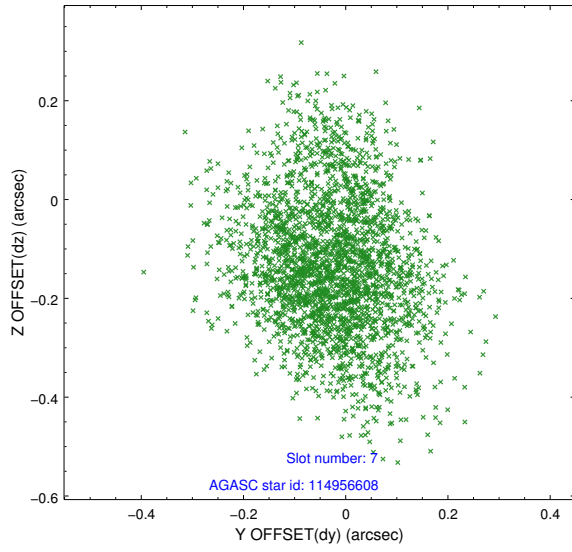
2.4.3 Slot 5



2.4.4 Slot 6

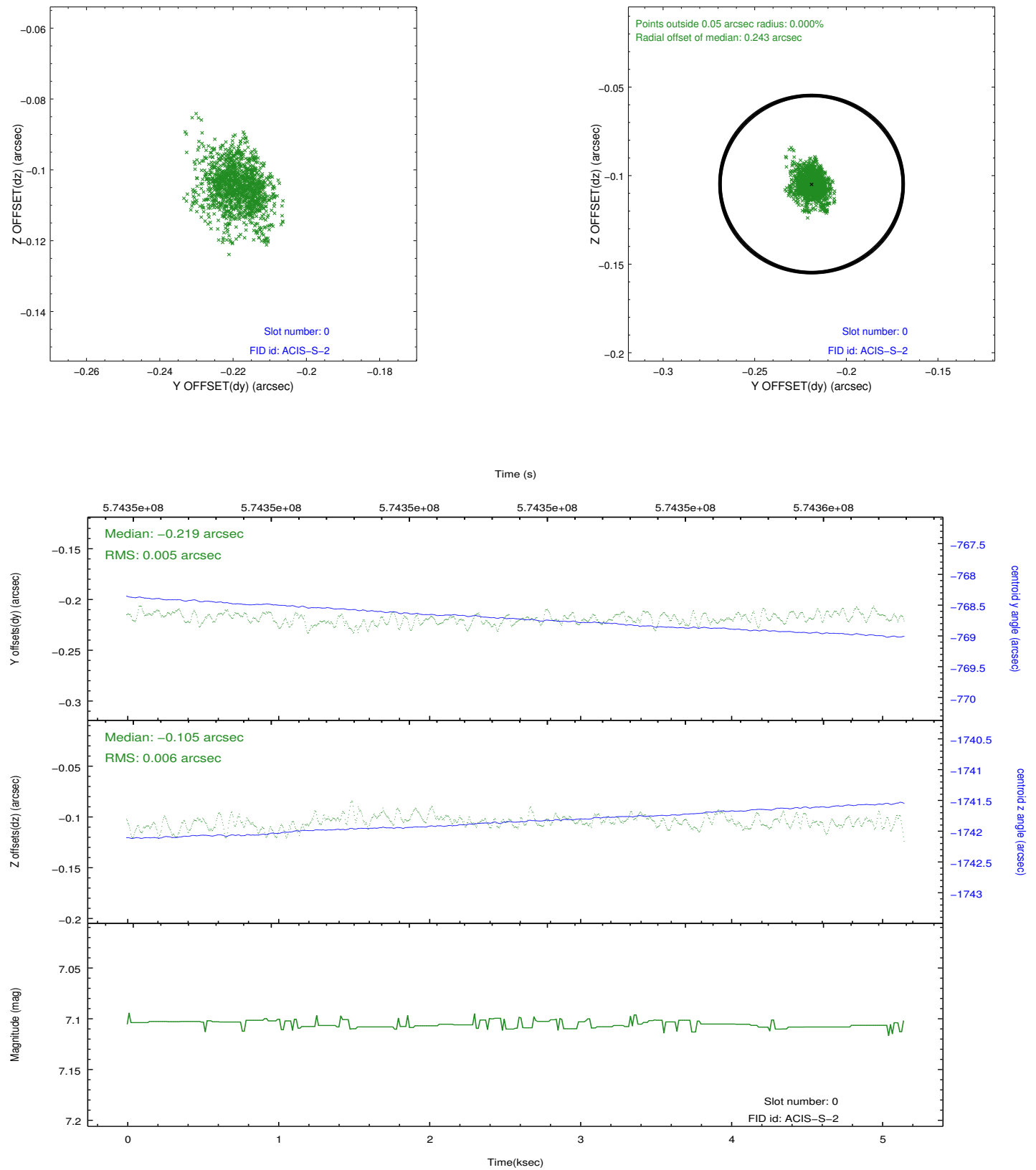


2.4.5 Slot 7

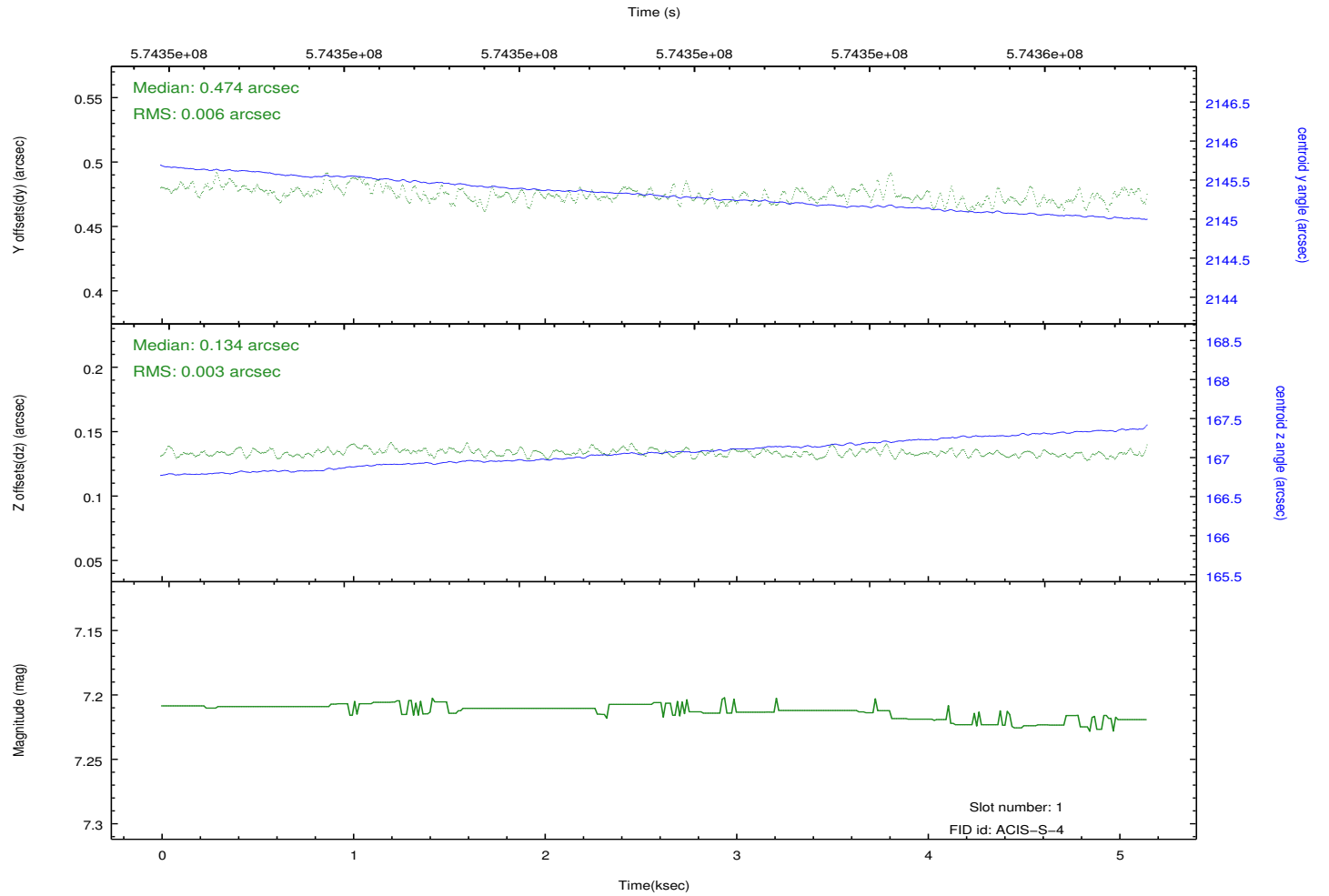
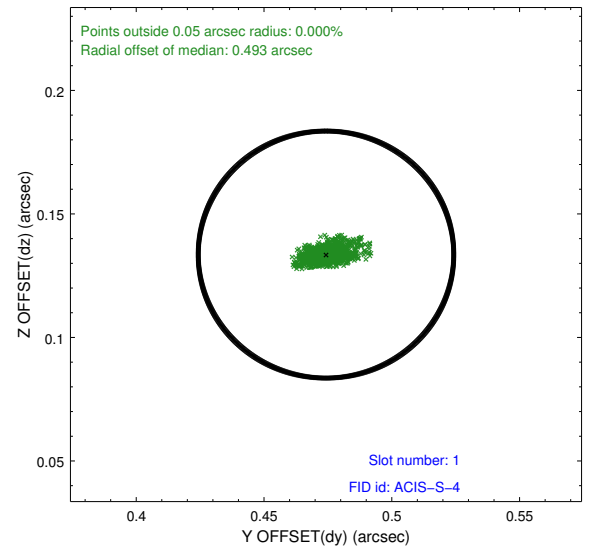
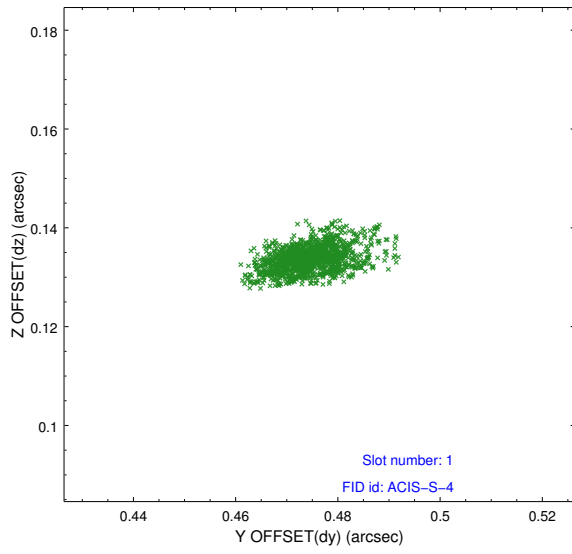


2.5 FID Slots

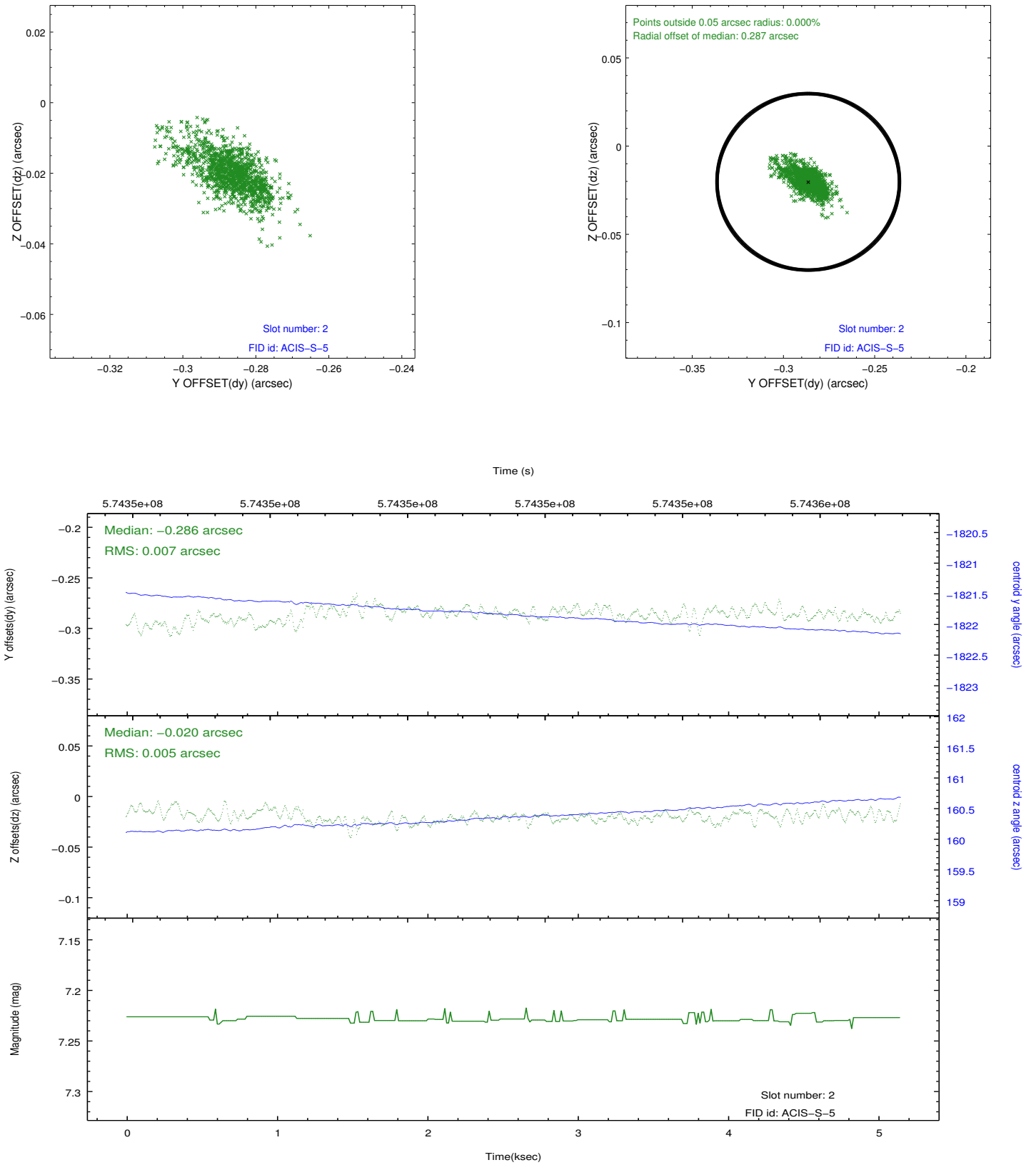
2.5.1 Slot 0



2.5.2 Slot 1



2.5.3 Slot 2



A Summary

A.1 Status

V&V Scientist	Joy Nichols
V&V Date (YYYY-MM-DD)	2016.03.15
V&V Edition	1
V&V Disposition and Status	OK
V&V Charge Time	5.0691996977329

A.2 Comments