

V&V Reference Report

L2 ASCDS Version : 7.6.9

Observation 1851 - L2 Version 001
Chandra X-Ray Center

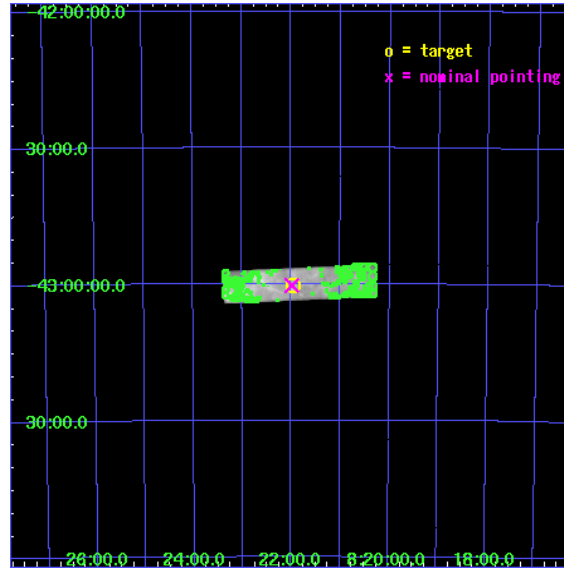
L2 Processing Date : Nov 4 2006

Contents

| | | |
|----------|-------------------------------|-----------|
| 1 | Front | 2 |
| 2 | OBI | 3 |
| 2.1 | OBI | 3 |
| 2.1.1 | Images | 3 |
| 2.1.2 | Parameters | 4 |
| 2.1.3 | Events | 4 |
| 2.2 | Compared Parameters | 5 |
| 2.3 | Aspect | 6 |
| 2.4 | Star Slots | 9 |
| 2.4.1 | Slot 3 | 9 |
| 2.4.2 | Slot 4 | 10 |
| 2.4.3 | Slot 5 | 11 |
| 2.4.4 | Slot 6 | 12 |
| 2.4.5 | Slot 7 | 13 |
| 2.5 | FID Slots | 14 |
| 2.5.1 | Slot 0 | 14 |
| 2.5.2 | Slot 1 | 15 |
| 2.5.3 | Slot 2 | 16 |
| 3 | Point Sources | 17 |
| A | Summary | 18 |
| A.1 | Status | 18 |
| A.2 | Comments | 18 |

1 Front

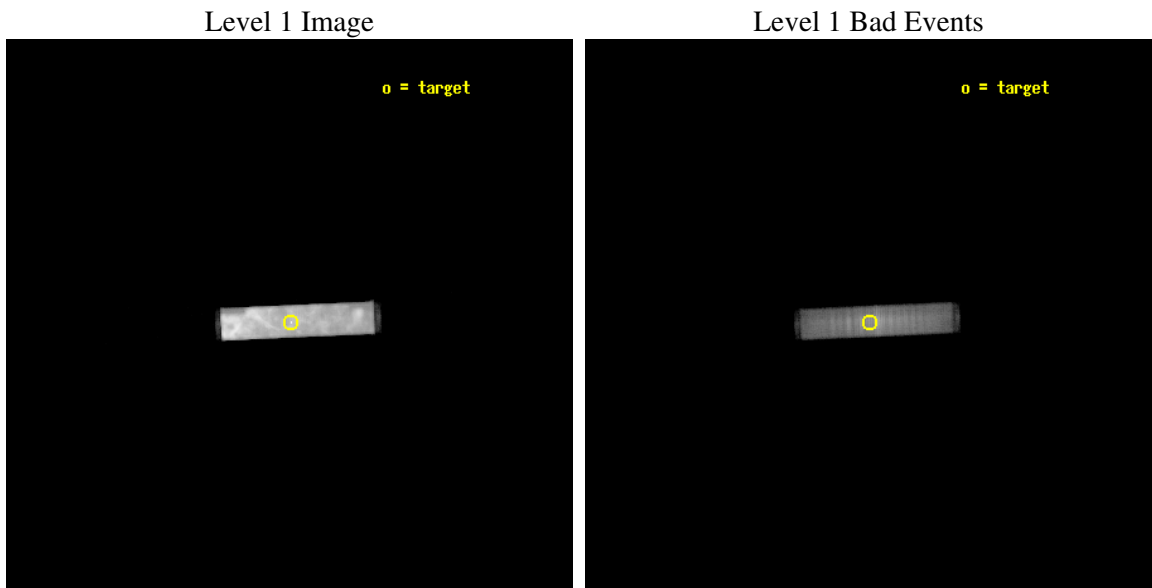
| | |
|----------|--|
| seq_num | 500122 |
| obs_id | 1851 |
| title | RADIO-SILENT NEUTRON STARS IN SUPERNOVA REMNANTS |
| observer | Dr. George Pavlov |
| object | RX J0822-4300 |
| ra_targ | 125.489583 |
| dec_targ | -43.004361 |
| ra_nom | 125.49614800221 |
| dec_nom | -43.004736349266 |
| roll_nom | 357.43306151505 |
| revision | 3 |
| ontime | 19666.932006568 |
| livetime | 19523.611790312 |
| l2events | 1774486 |



2 OBI

2.1 OBI

2.1.1 Images



2.1.2 Parameters

| | |
|----------|---------------------|
| obi_num | 0 |
| ascdsver | 7.6.9 |
| caldbver | 3.2.3 |
| date | 2006-11-04T09:59:04 |
| revision | 3 |

| | |
|----------------|-----------------|
| sched_exp_time | 19500.000000 |
| ontime | 19667.957006603 |
| l1events | 2182504 |

2.1.3 Events

Level 1 Events

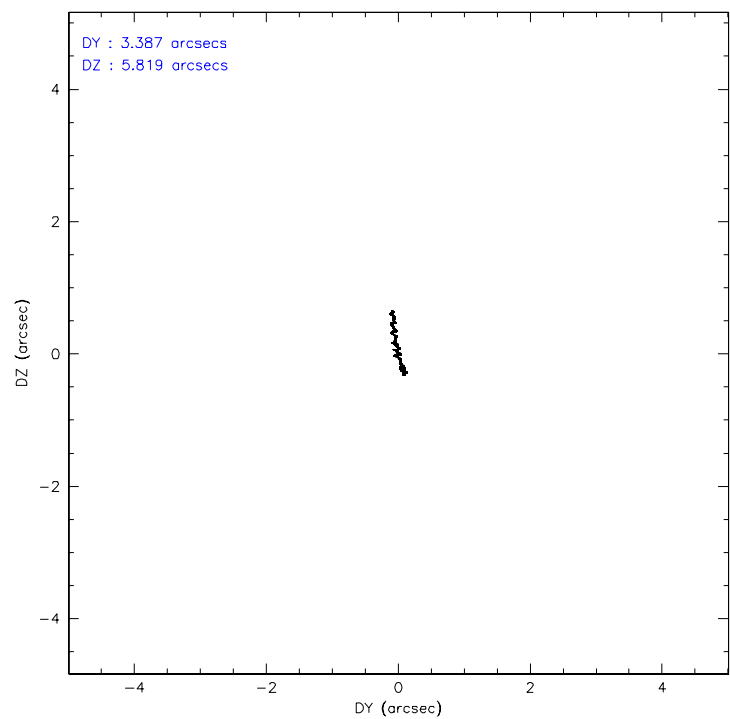
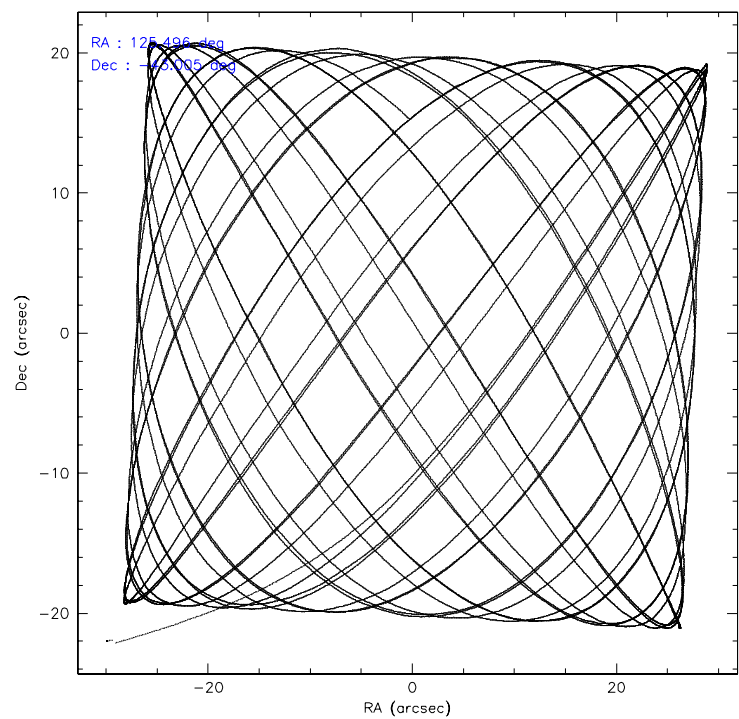
| | segment 1 | segment 2 | segment 3 |
|--------------------|----------------------|----------------------|----------------------|
| level 1 events | 23039 | 2135560 | 23905 |
| rejected events | 22968 | 317200 | 23904 |
| rejected % | 99% | 14% | 99% |

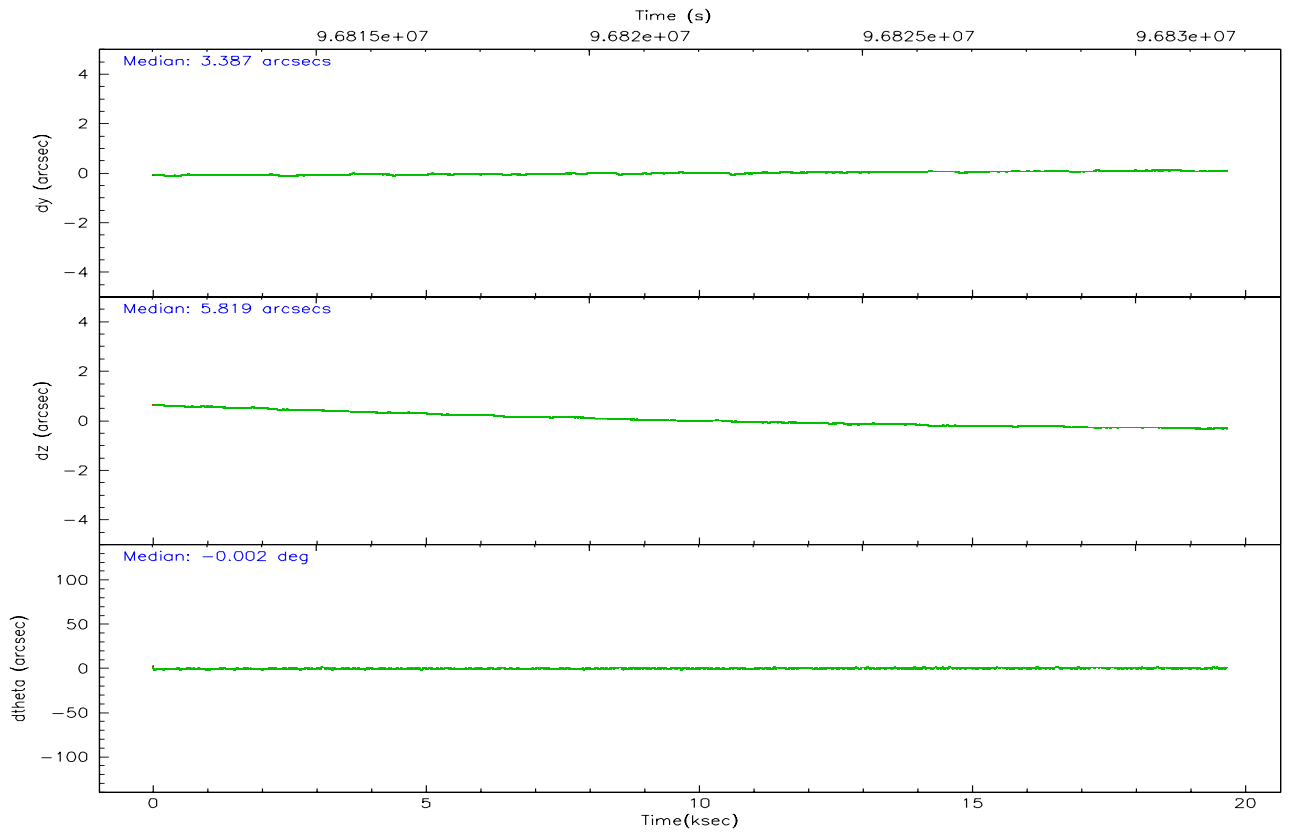
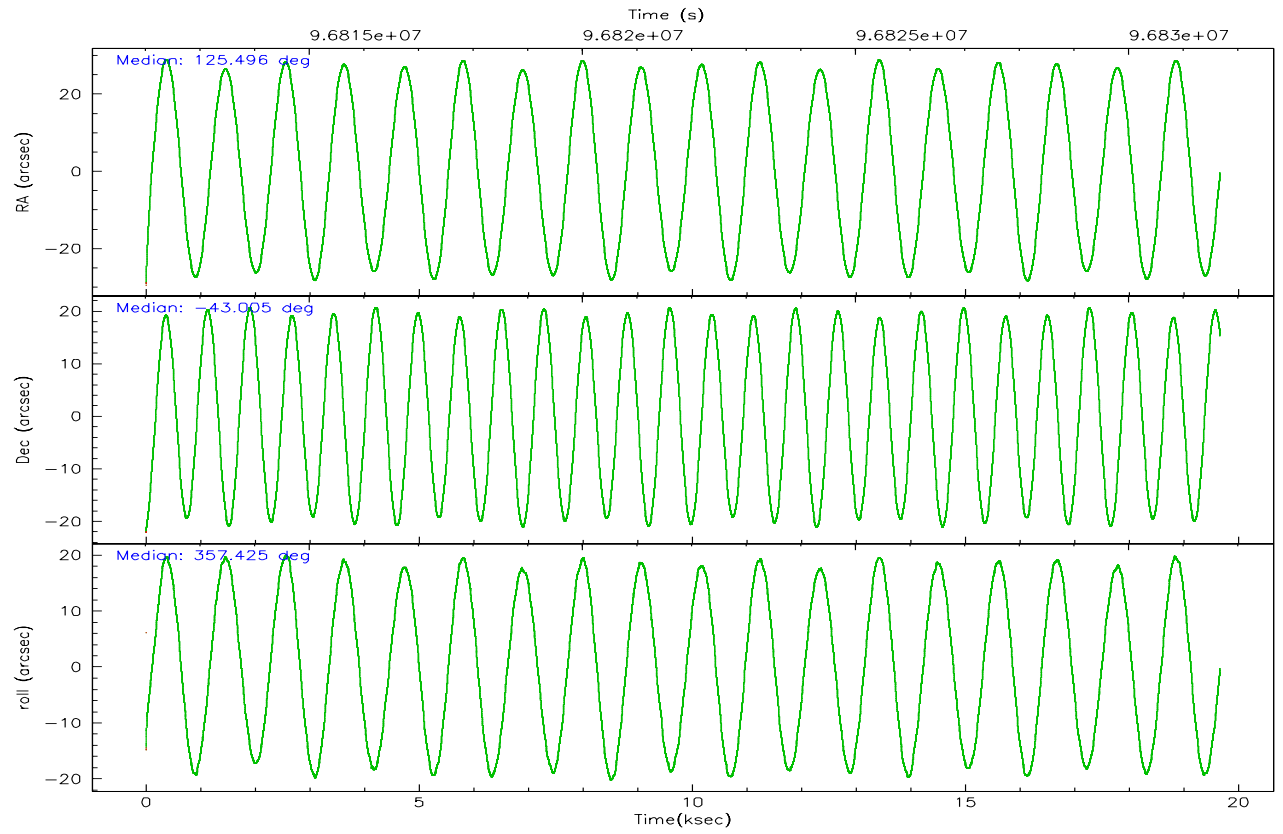
2.2 Compared Parameters

| Parameter | Planned | Actual |
|-----------------------------------|---------------------|----------------------|
| Instrument | HRC | HRC |
| Detector | HRC-S | HRC-S |
| Grating | NONE | NONE |
| Data mode | OBSERVING | OBSERVING |
| Observation mode | POINTING | POINTING |
| Pointing RA | 125.462183 | 125.496148002207 |
| Pointing Dec | -43.019113 | -43.00473634926573 |
| Pointing Roll | 357.342556 | 357.4330615150504 |
| SIM focus pos (mm) | -1.429586 | -1.428180813131781 |
| SIM defocus (mm) | 0.1037507710433287 | 0.1051558262725154 |
| SIM translation stage pos (mm) | 250.455976 | 250.466033080201 |
| SIM translation stage offset (mm) | 0 | -0.01005468664627074 |
| Observation start time | 96812178.184000 | 96810904.85752299 |
| Observation start date | 2001-01-25T12:15:14 | 2001-01-25T11:55:04 |
| Observation end time | 96831678.184000 | 96832653.820859 |
| Observation end date | 2001-01-25T17:40:14 | 2001-01-25T17:57:33 |

| Parameter | Planned | Actual |
|------------------------------|-----------|---------|
| Obspar format version number | 6 | 6 |
| Obspar file type | PREDICTED | ACTUAL |
| Obspar update status | NONE | UPDATED |

2.3 Aspect



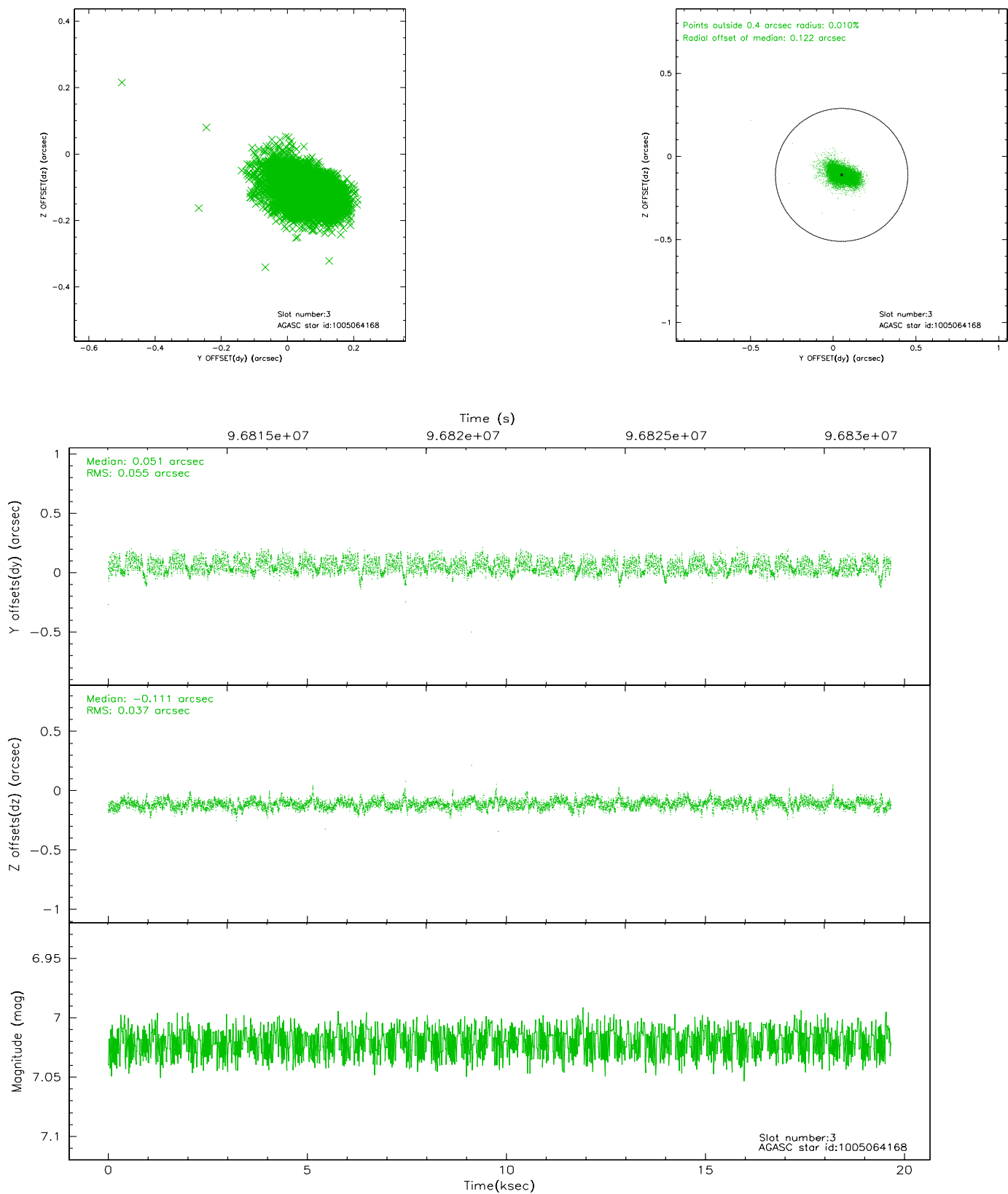


Slot Statistics

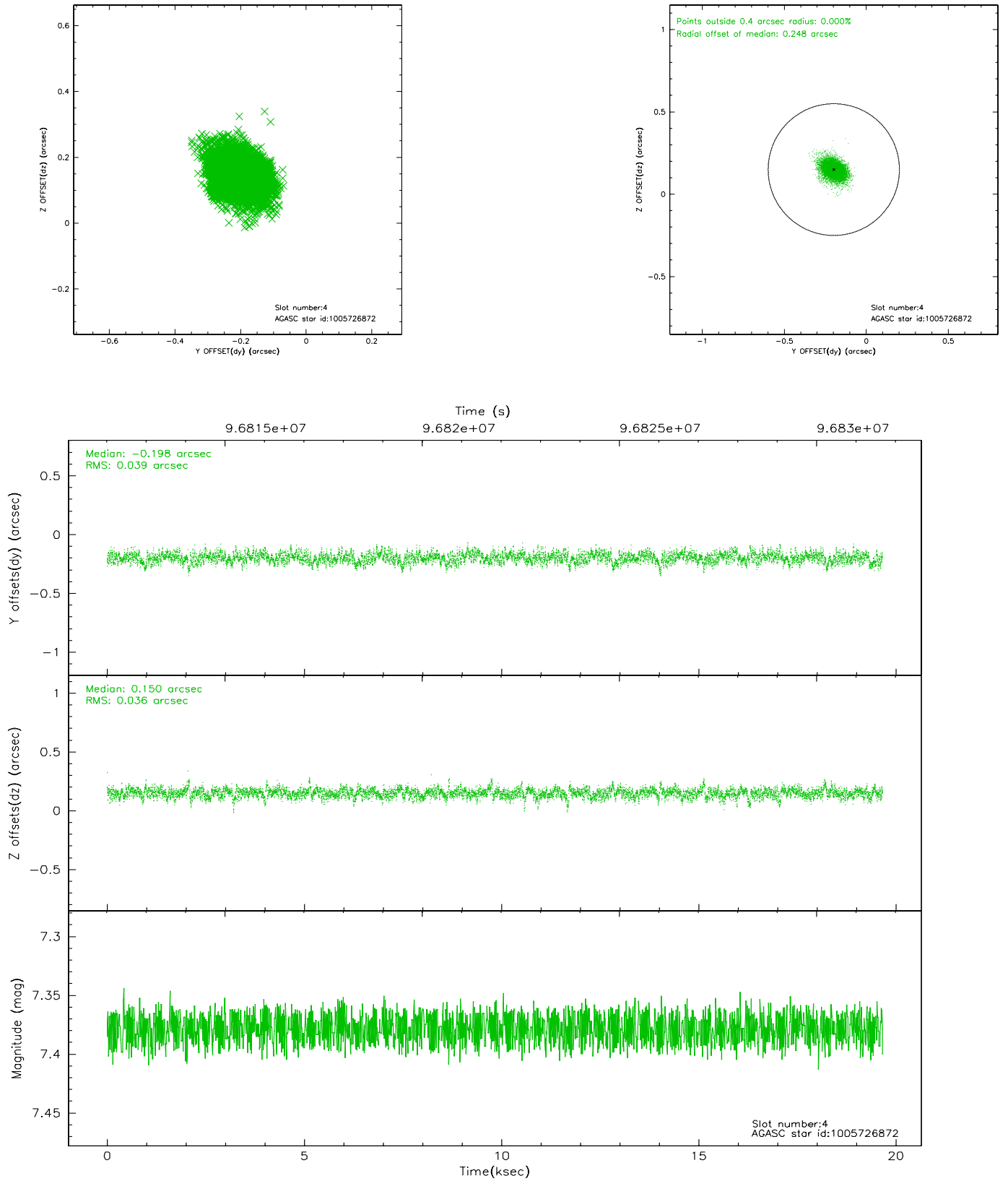
| slot | status | id | mag | n_pts | med_dy | med_dz | dr1 | dr2 | ra | dec | mean_y | mean_z |
|------|--------|------------|------|-------|--------|--------|-------|-------|------------|------------|----------|----------|
| 0 | FID | HRC-S-1 | 6.98 | 4797 | 0.155 | -0.149 | 0.015 | 0.031 | 0.000000 | 0.000000 | -1157.43 | -454.39 |
| 1 | FID | HRC-S-2 | 6.98 | 4797 | 0.089 | -0.094 | 0.005 | 0.009 | 0.000000 | 0.000000 | 1241.94 | -447.13 |
| 2 | FID | HRC-S-3 | 7.00 | 4797 | 0.146 | -0.059 | 0.015 | 0.033 | 0.000000 | 0.000000 | -1159.88 | 575.12 |
| 3 | GUIDE | 1005064168 | 7.02 | 9595 | 0.051 | -0.111 | 0.070 | 0.115 | 124.723843 | -42.526737 | -2039.00 | 1670.86 |
| 4 | GUIDE | 1005726872 | 7.38 | 9593 | -0.198 | 0.150 | 0.055 | 0.095 | 125.535449 | -43.662820 | 297.72 | -2305.77 |
| 5 | GUIDE | 1005724040 | 7.57 | 9595 | 0.105 | -0.004 | 0.069 | 0.280 | 125.738175 | -43.227880 | 758.07 | -718.58 |
| 6 | GUIDE | 1005065848 | 7.59 | 9595 | 0.013 | -0.073 | 0.057 | 0.094 | 124.947854 | -42.722303 | -1408.46 | 999.78 |
| 7 | GUIDE | 1005723560 | 8.48 | 9591 | 0.023 | 0.038 | 0.096 | 0.143 | 126.279097 | -43.364629 | 2193.66 | -1153.45 |

2.4 Star Slots

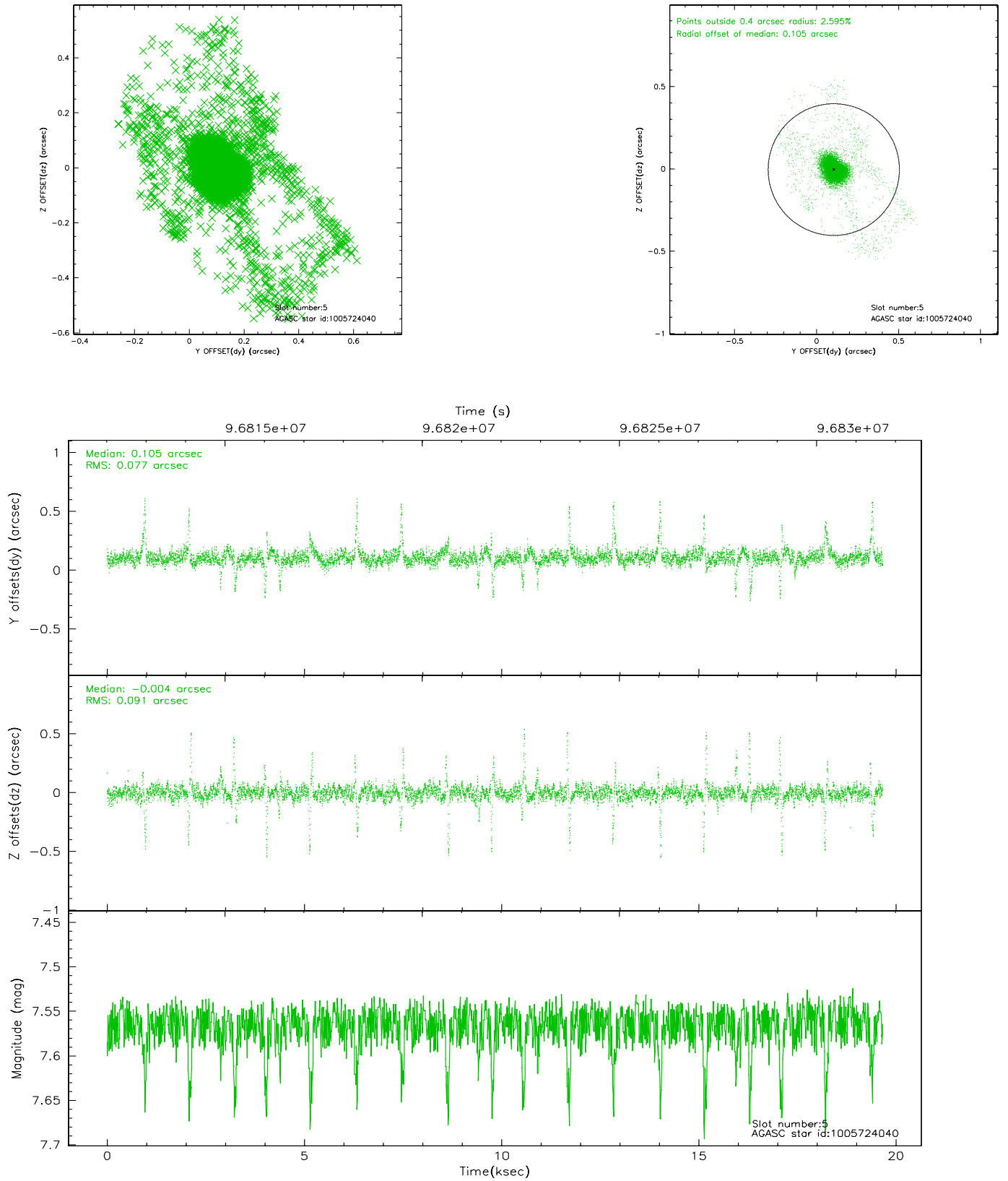
2.4.1 Slot 3



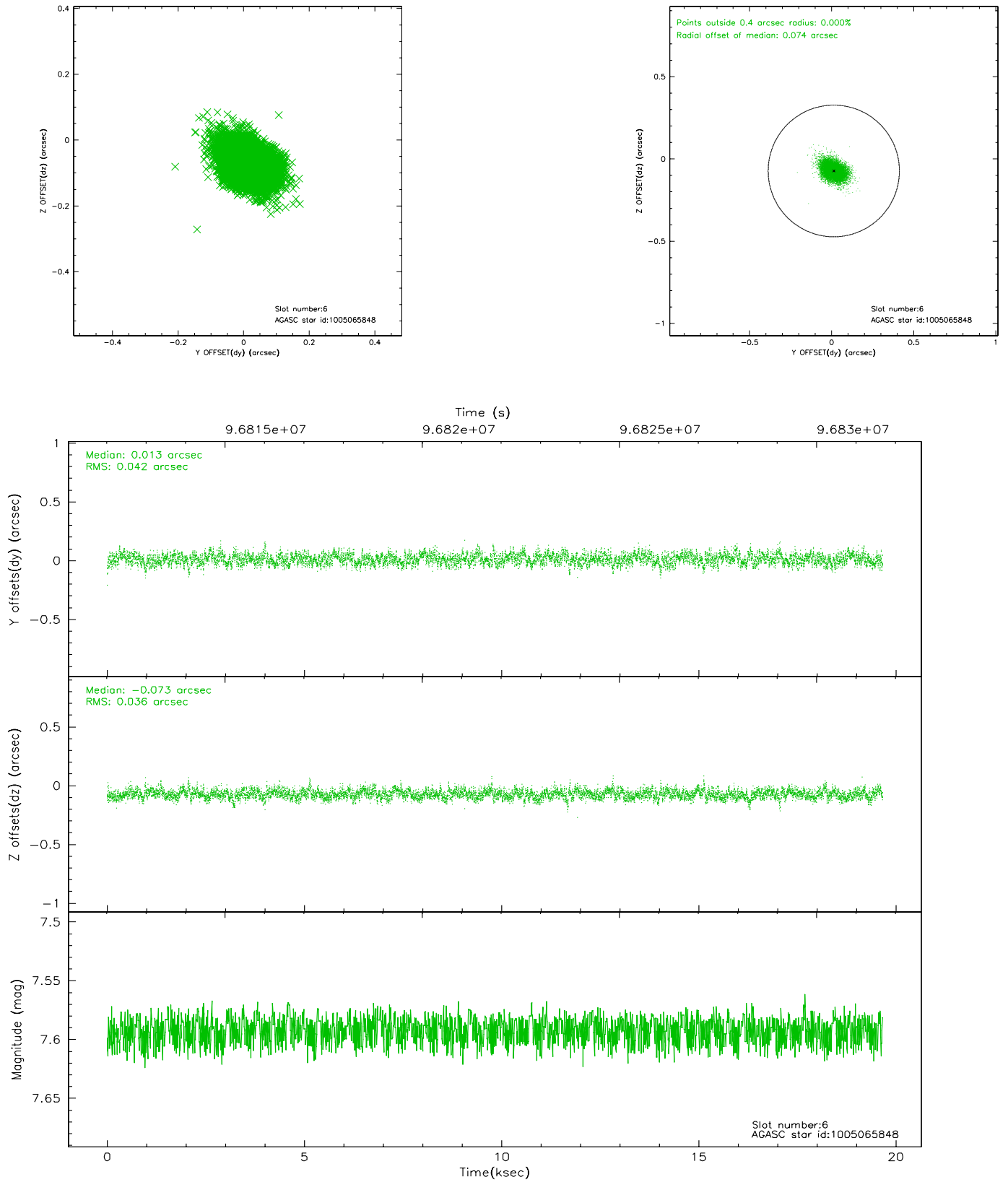
2.4.2 Slot 4



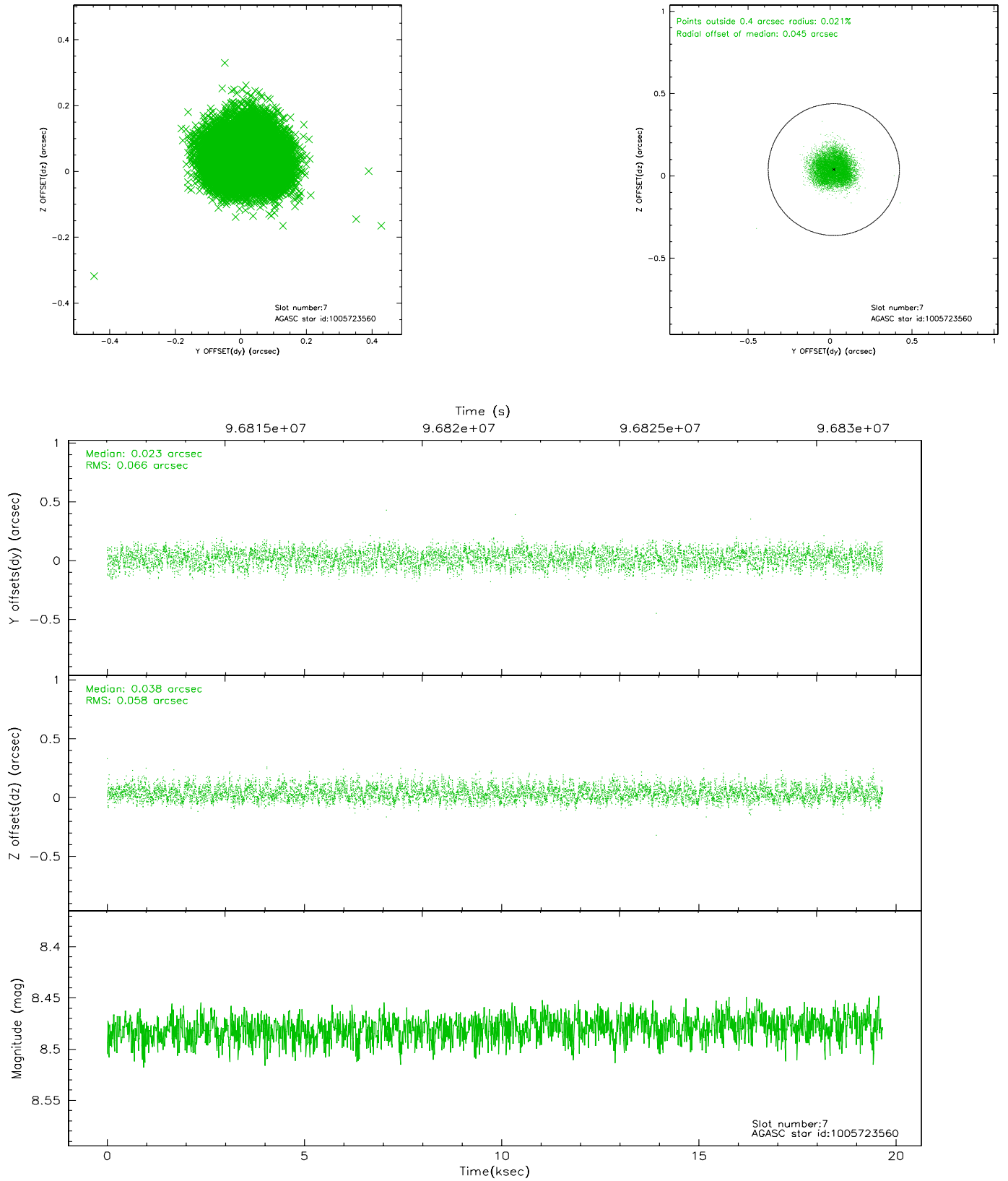
2.4.3 Slot 5



2.4.4 Slot 6

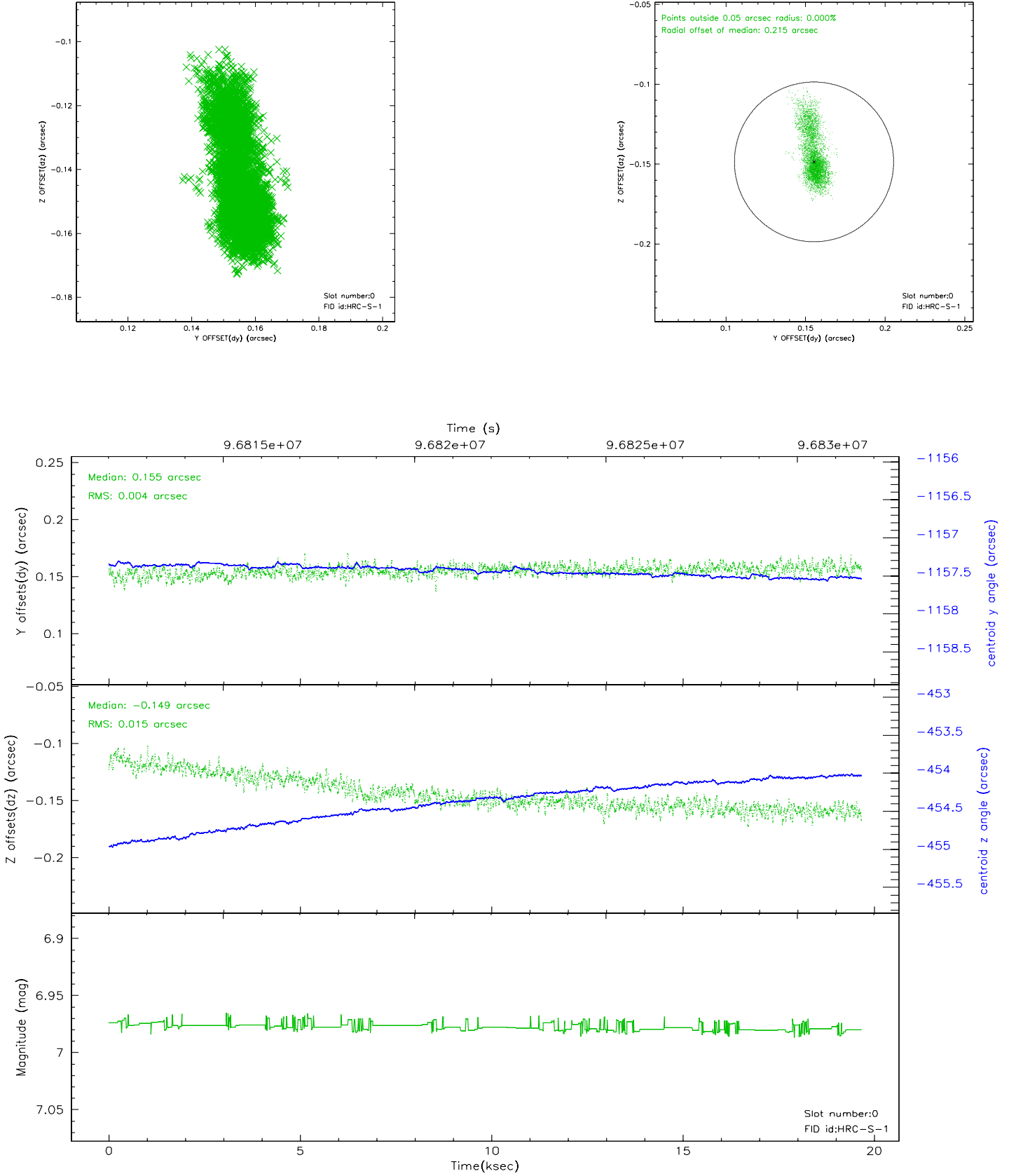


2.4.5 Slot 7

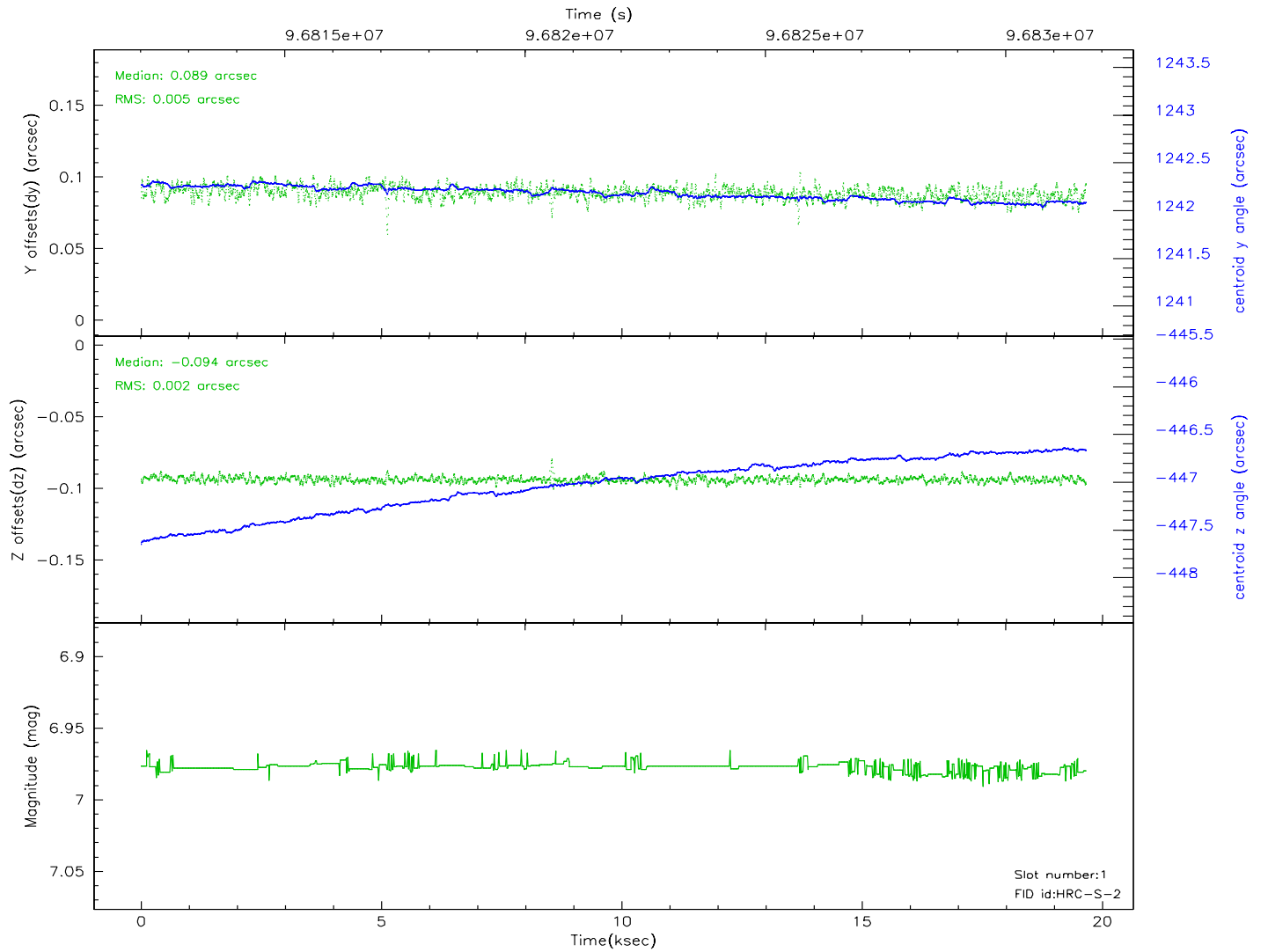
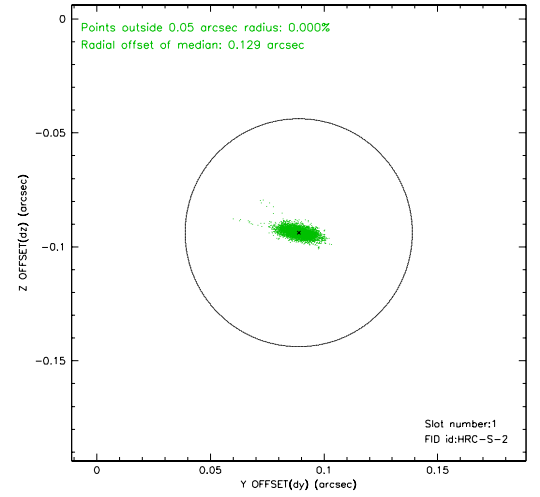
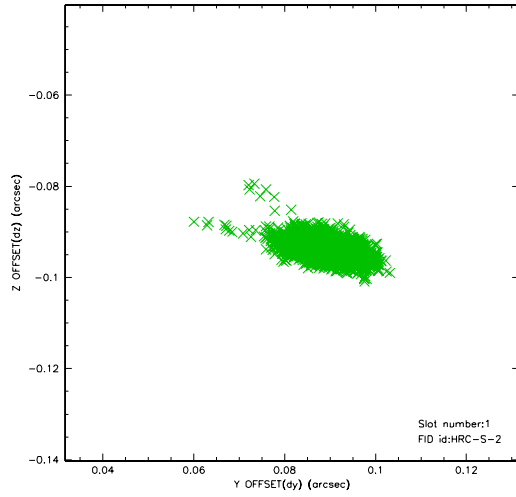


2.5 FID Slots

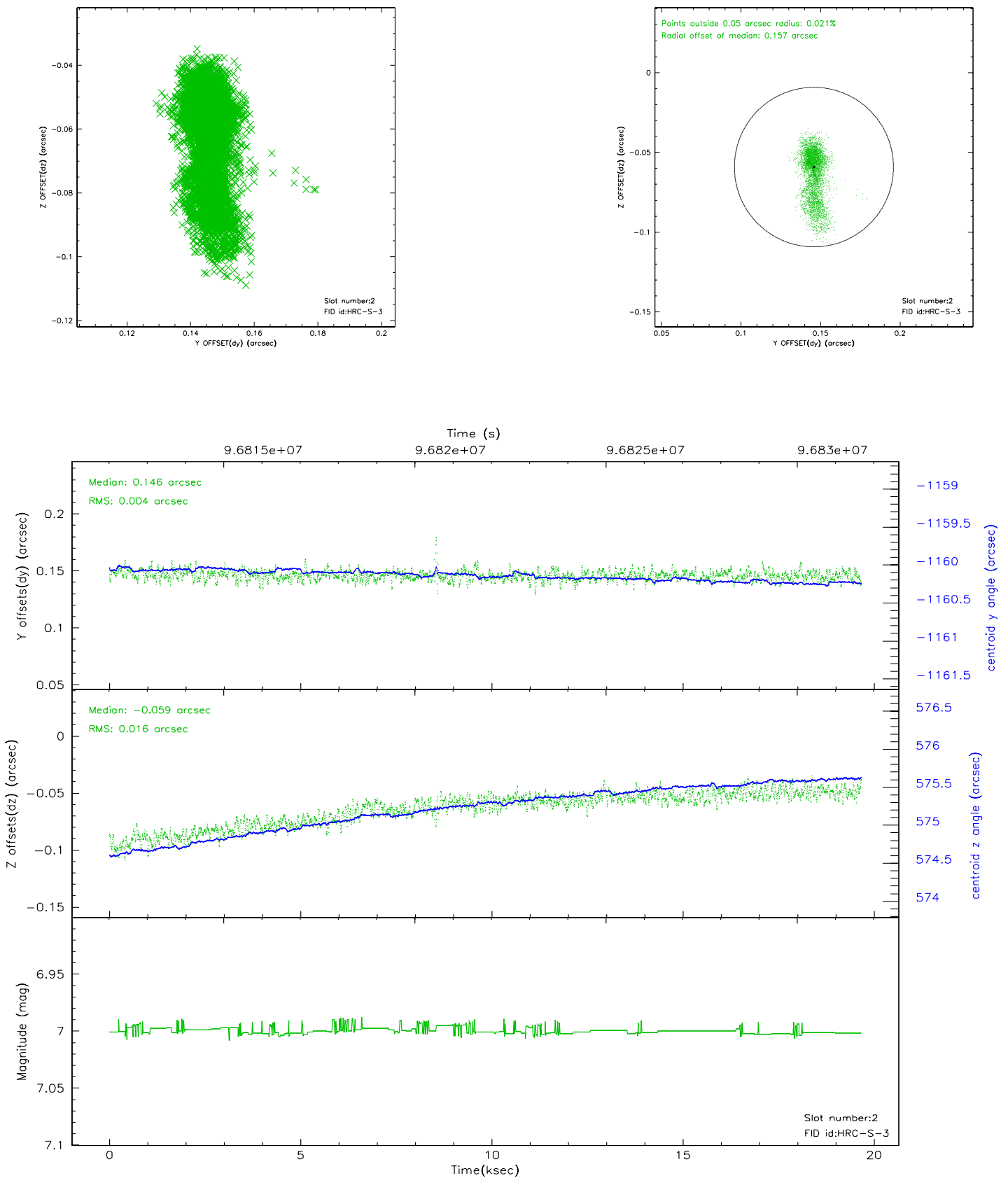
2.5.1 Slot 0



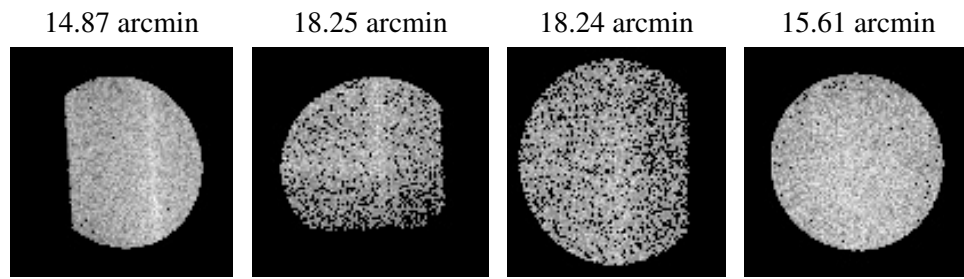
2.5.2 Slot 1



2.5.3 Slot 2



3 Point Sources



A Summary

A.1 Status

| | |
|----------------------------|---------------|
| V&V Scientist | Beth Sundheim |
| V&V Date (YYYY-MM-DD) | 2006.11.06 |
| V&V Edition | 1 |
| V&V Disposition and Status | OK |
| V&V Charge Time | 19.66 |

A.2 Comments