

V&V Reference Report

L2 ASCDS Version : 7.6.10

Observation 1801 - L2 Version 5
Chandra X-Ray Center

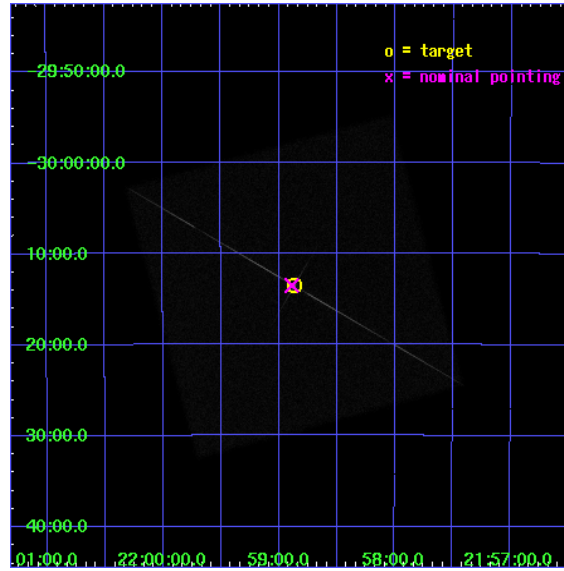
L2 Processing Date : Nov 20 2007

Contents

1	Front	2
2	OBI	3
2.1	OBI	3
2.1.1	Images	3
2.1.2	Parameters	4
2.1.3	Events	4
2.2	Compared Parameters	5
2.3	Aspect	6
2.4	Star Slots	9
2.4.1	Slot 3	9
2.4.2	Slot 4	10
2.4.3	Slot 5	11
2.4.4	Slot 6	12
2.4.5	Slot 7	13
2.5	FID Slots	14
2.5.1	Slot 0	14
2.5.2	Slot 1	15
2.5.3	Slot 2	16
3	Gratings	17
3.1	LETG Arm	17
A	Summary	19
A.1	Status	19
A.2	Comments	19

1 Front

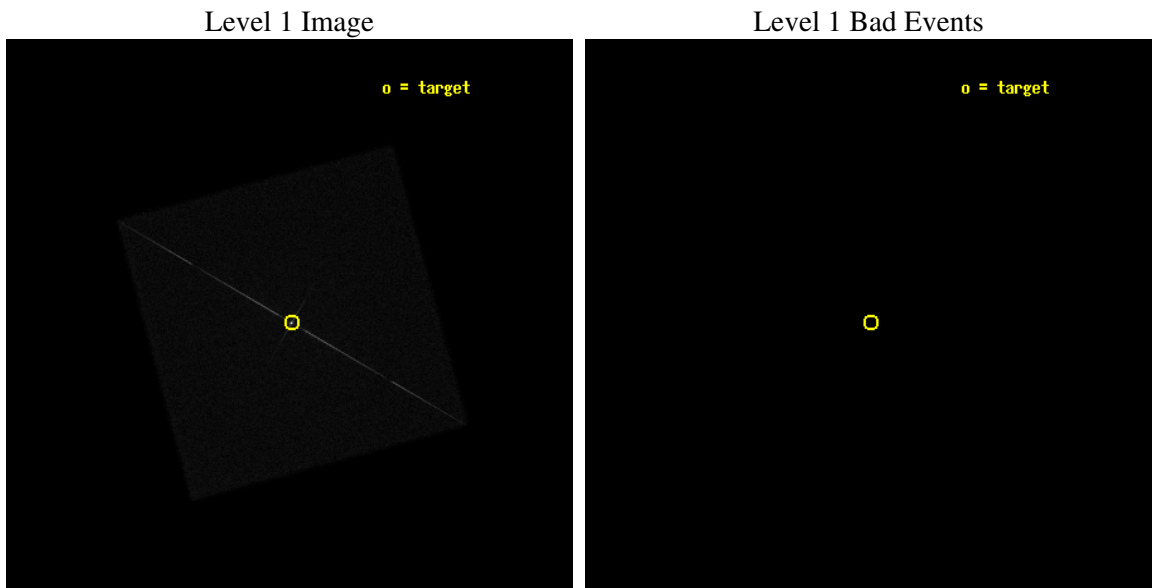
seq_num	390019
obs_id	1801
title	GRATINGS CALIBRATION OBSERVATIONS OF PKS2155-304
observer	Dr. CXC Calibration
object	PKS2155-304
ra_targ	329.716667
dec_targ	-30.225556
ra_nom	329.72186774248
dec_nom	-30.224951491146
roll_nom	29.834586852796
revision	5
ontime	13791.375515252
livetime	13730.14785471
l2events	346537



2 OBI

2.1 OBI

2.1.1 Images



2.1.2 Parameters

obi_num	0
ascdsver	7.6.11.2
caldbver	3.4.1
date	2007-11-20T12:51:21
revision	5

sched_exp_time	10000.000000
ontime	13791.375515252
l1events	501338

2.1.3 Events

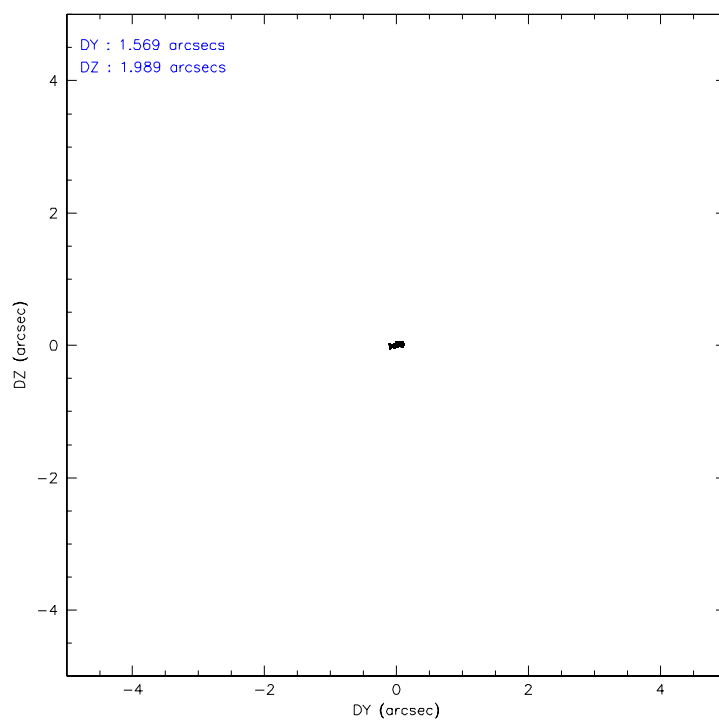
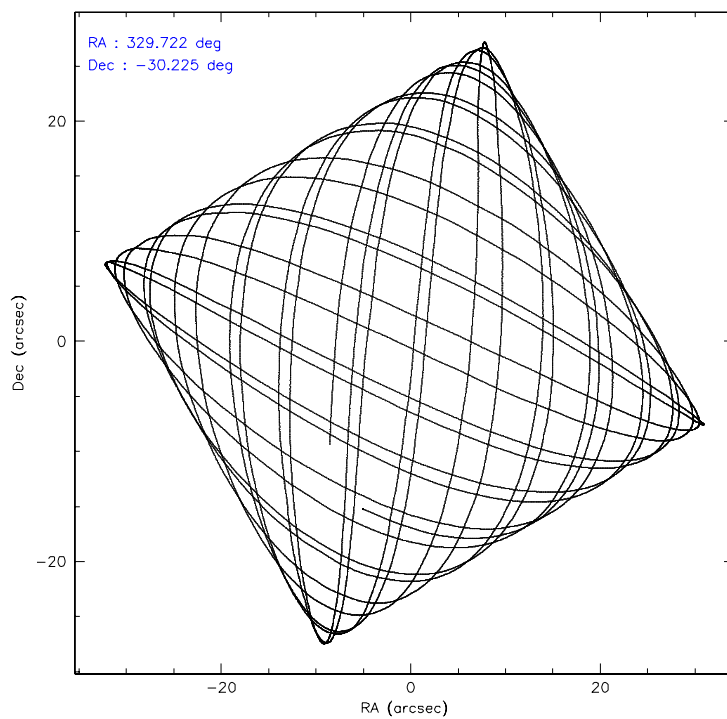
Level 1 Events

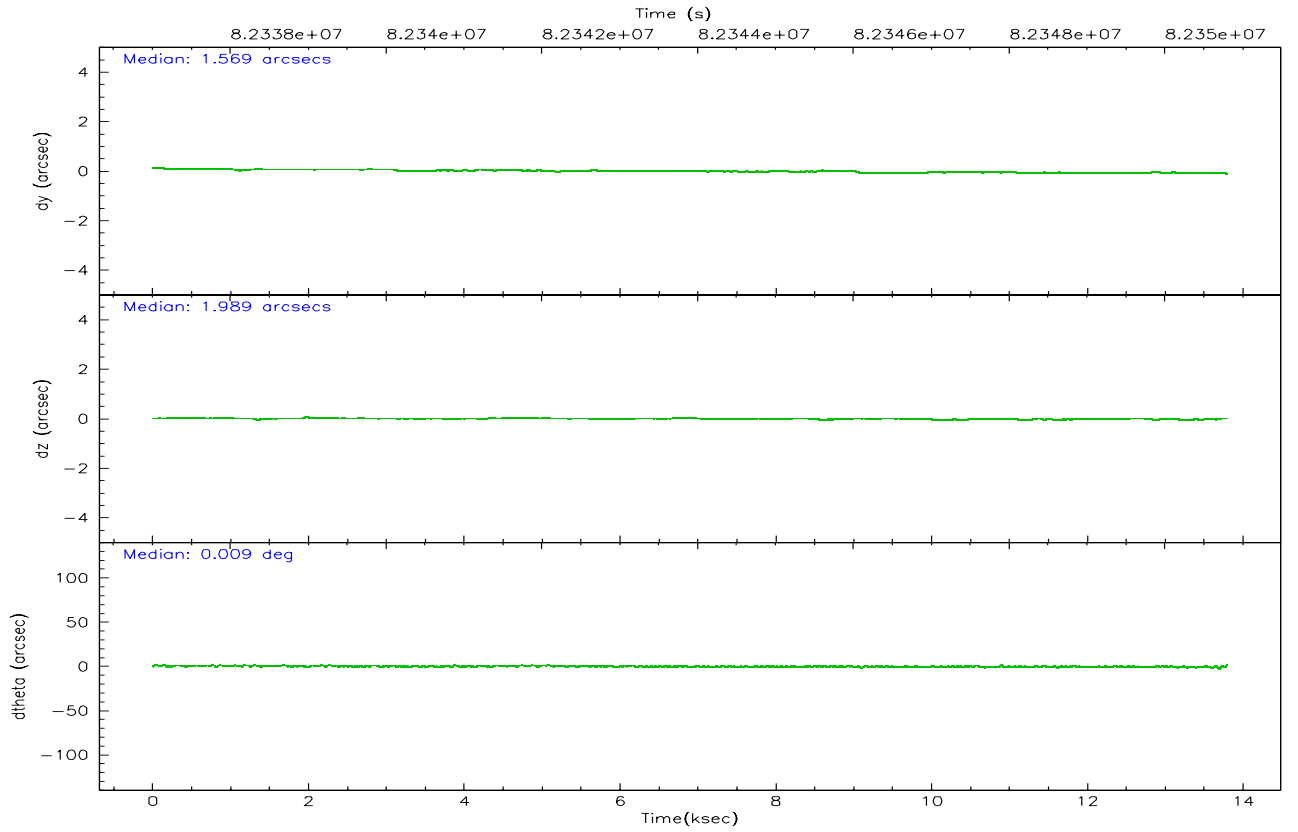
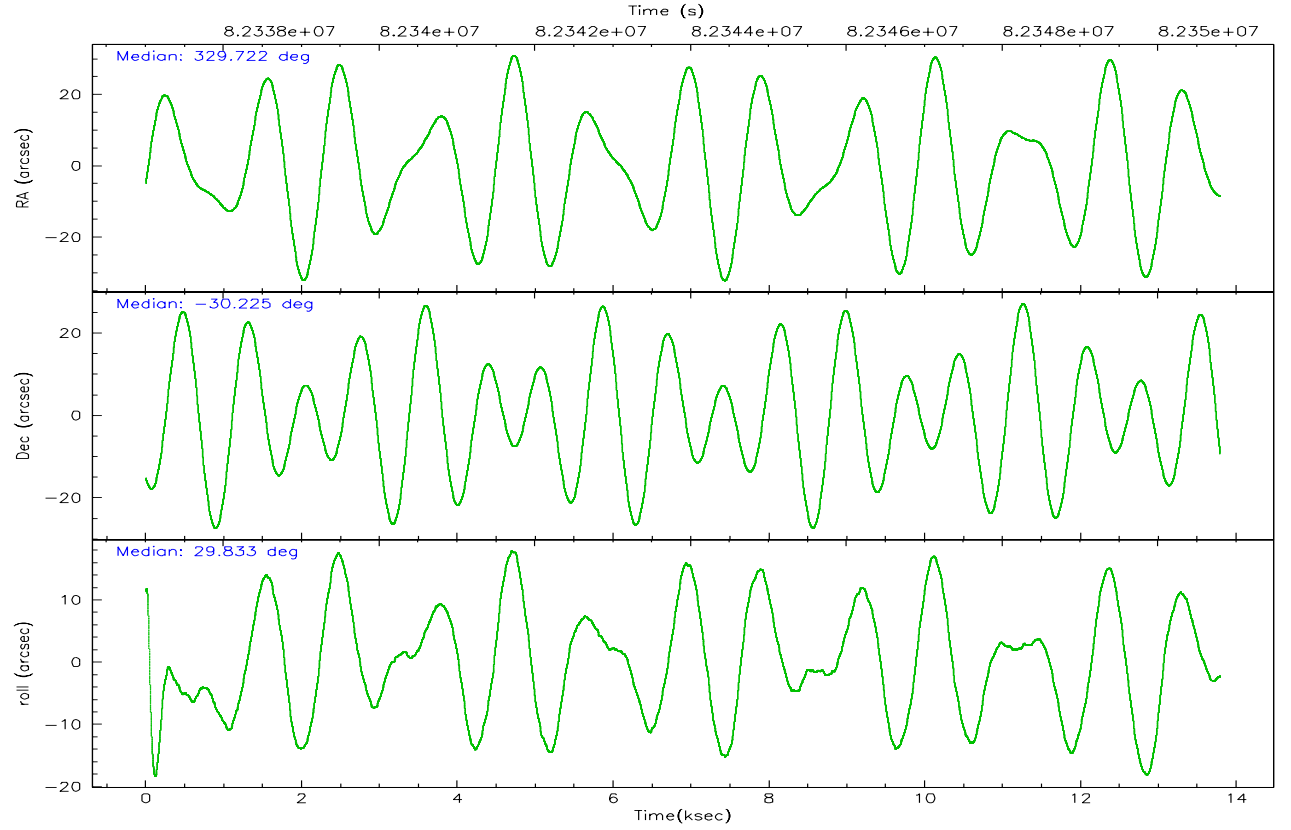
	segment 0
level 1 events	501338
rejected events	1647
rejected %	0%

2.2 Compared Parameters

Parameter	Planned	Actual	Parameter	Planned	Actual
Instrument	HRC	HRC	Obspar format version number	6	6
Detector	HRC-I	HRC-I	Obspar file type	PREDICTED	ACTUAL
Grating	LETG	LETG	Obspar update status	NONE	UPDATED
Data mode	OBSERVING	OBSERVING			
Observation mode	POINTING	POINTING			
Pointing RA	329.706317	329.7218677424795			
Pointing Dec	-30.248779	-30.22495149114635			
Pointing Roll	29.922244	29.83458685279591			
SIM focus pos (mm)	-1.040293	-1.038866356238299			
SIM defocus (mm)	0	0.001426264420575141			
SIM translation stage pos (mm)	126.985494	126.9829799899862			
SIM translation stage offset (mm)	0	0.002508901615314585			
Observation start time	82337203.184000	82336827.545991			
Observation start date	2000-08-10T23:25:39	2000-08-10T23:20:27			
Observation end time	82347203.184000	82351015.59652101			
Observation end date	2000-08-11T02:12:19	2000-08-11T03:16:55			

2.3 Aspect



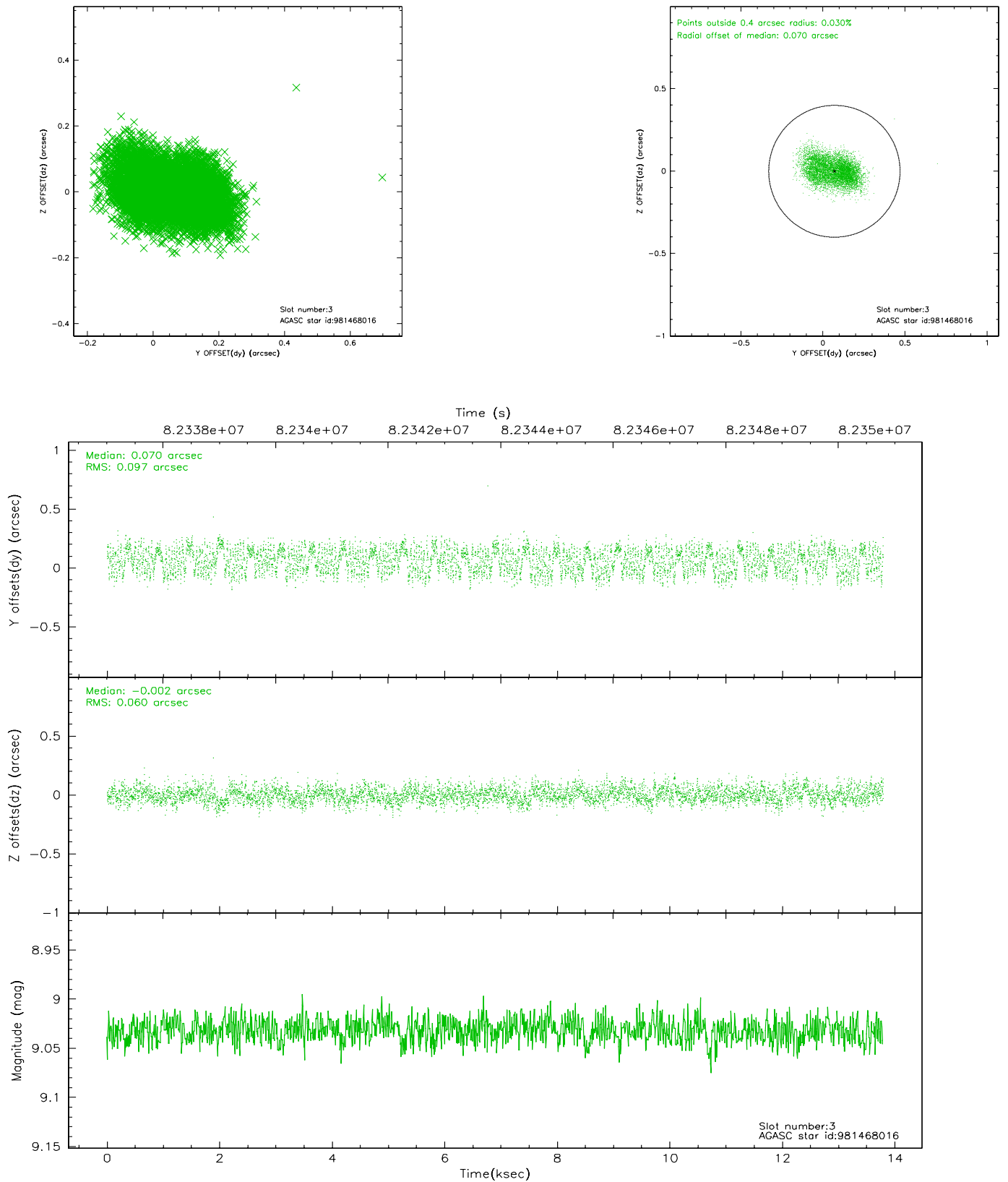


Slot Statistics

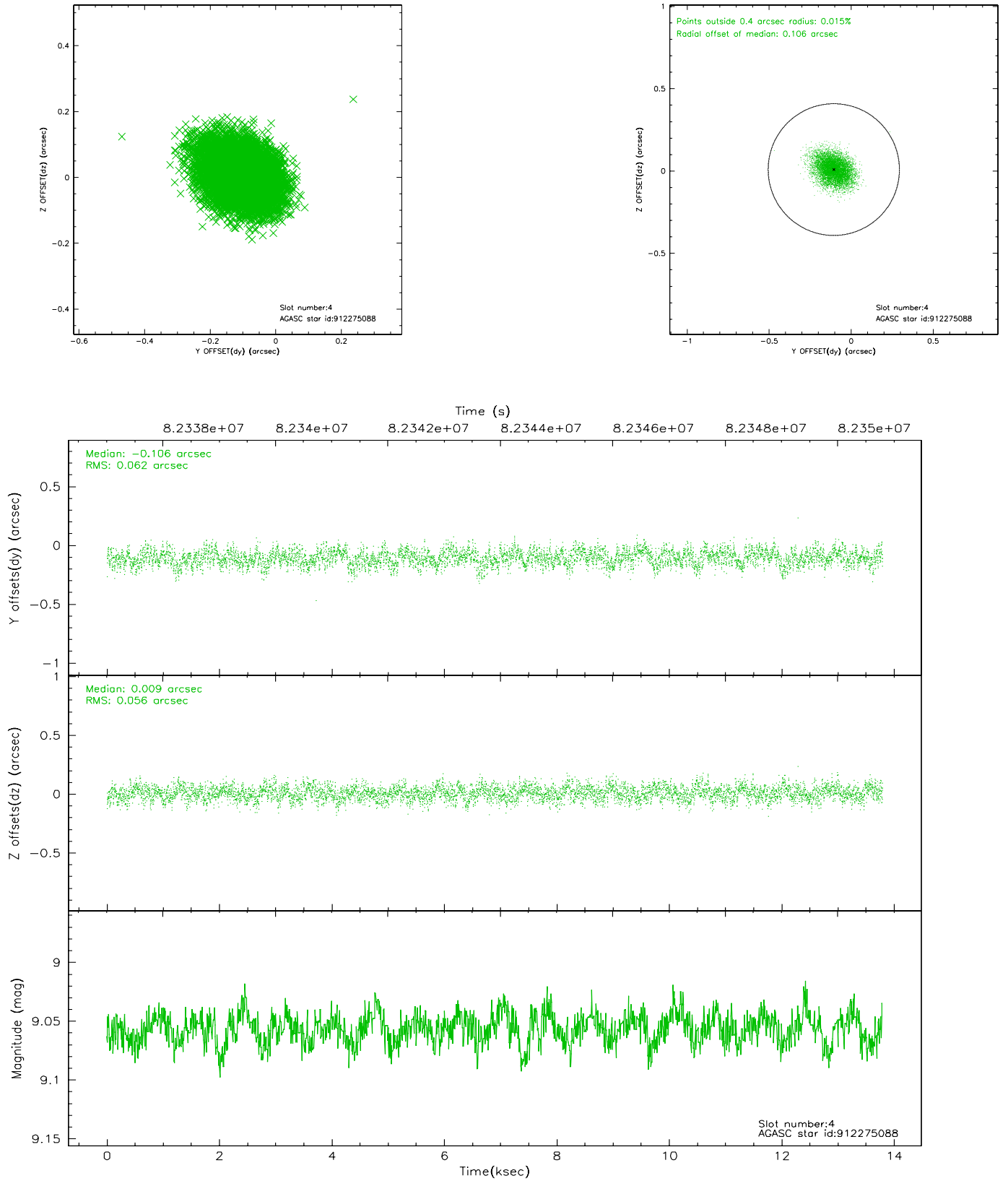
slot	status	id	mag	n_pts	med_dy	med_dz	dr1	dr2	ra	dec	mean_y	mean_z
0	FID	HRC-I-1	6.96	3364	0.047	-0.030	0.012	0.018	0.000000	0.000000	-756.98	-1289.71
1	FID	HRC-I-2	7.01	3364	0.039	-0.011	0.008	0.013	0.000000	0.000000	855.42	-1291.67
2	FID	HRC-I-4	7.00	3364	0.031	-0.051	0.015	0.021	0.000000	0.000000	1286.09	1012.02
3	GUIDE	981468016	9.03	6725	0.070	-0.002	0.123	0.190	328.842457	-30.034984	-1954.97	2001.65
4	GUIDE	912275088	9.06	6728	-0.106	0.009	0.089	0.144	329.619228	-29.738698	679.21	1728.03
5	GUIDE	981478152	9.41	6729	0.034	0.029	0.080	0.134	329.415589	-30.057192	-441.90	1049.39
6	GUIDE	981468128	9.36	6725	-0.001	-0.029	0.090	0.148	329.756350	-30.158334	296.98	205.07
7	GUIDE	981469488	9.61	6727	0.009	-0.009	0.108	0.178	329.261199	-30.045155	-838.23	1325.38

2.4 Star Slots

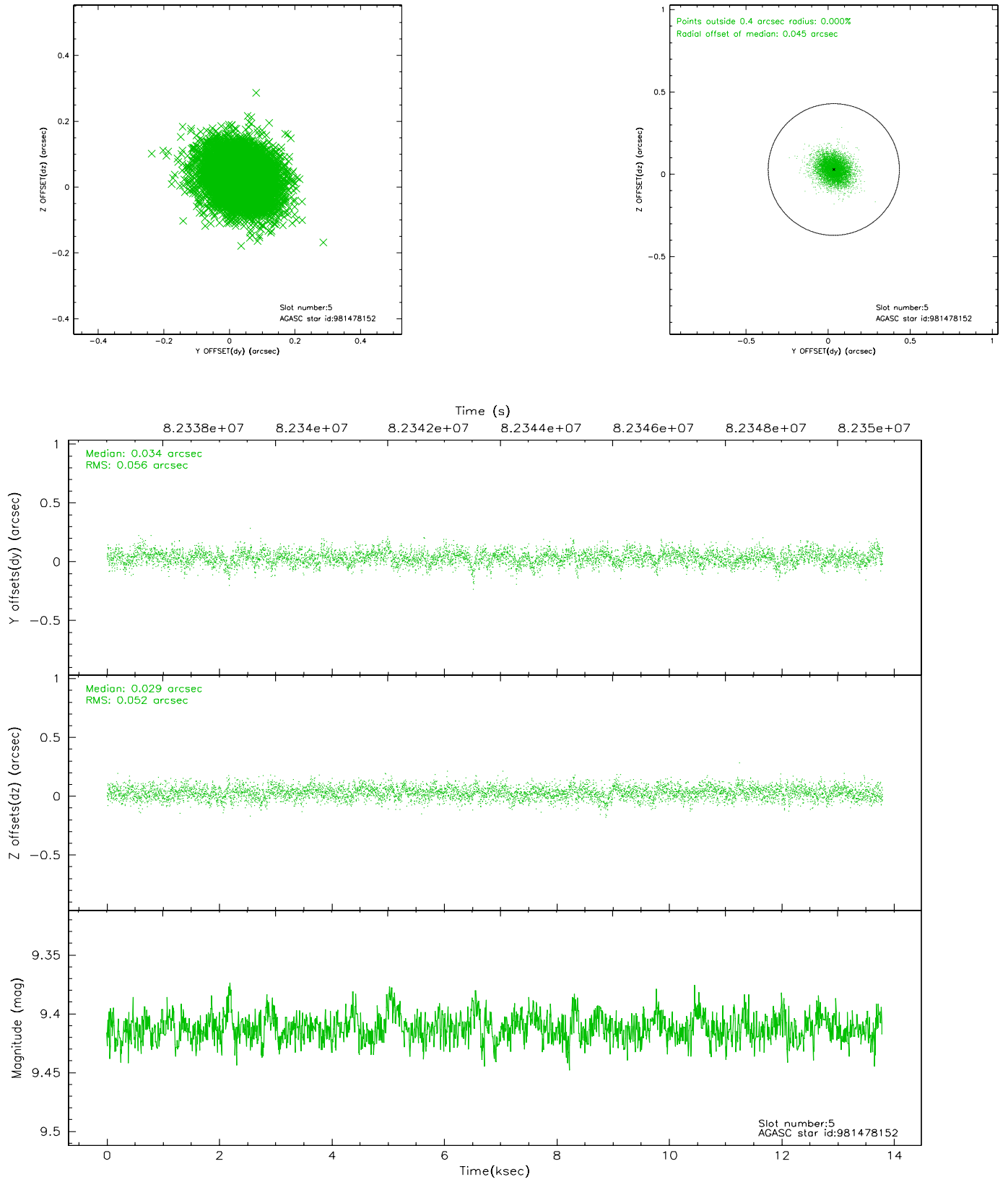
2.4.1 Slot 3



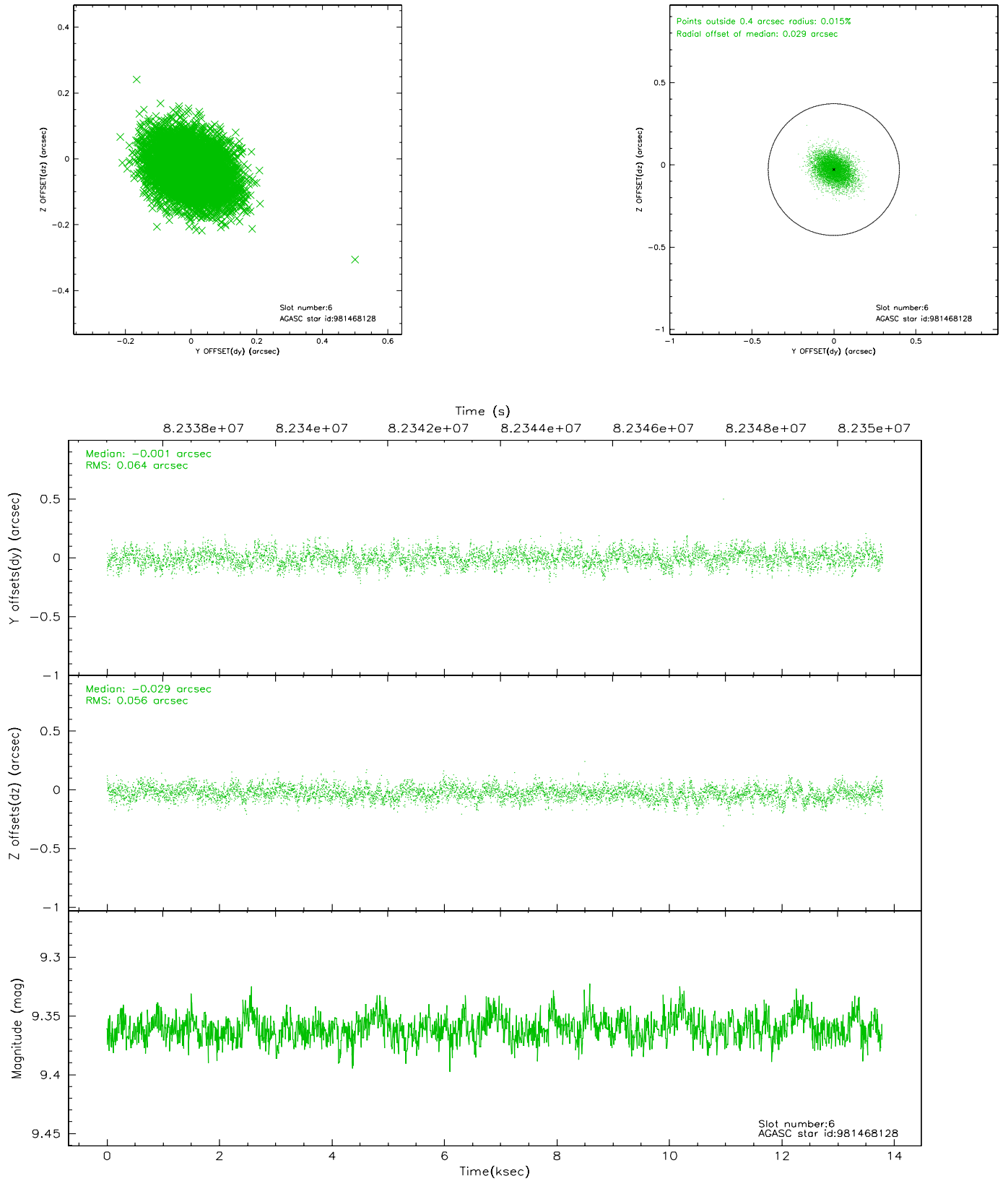
2.4.2 Slot 4



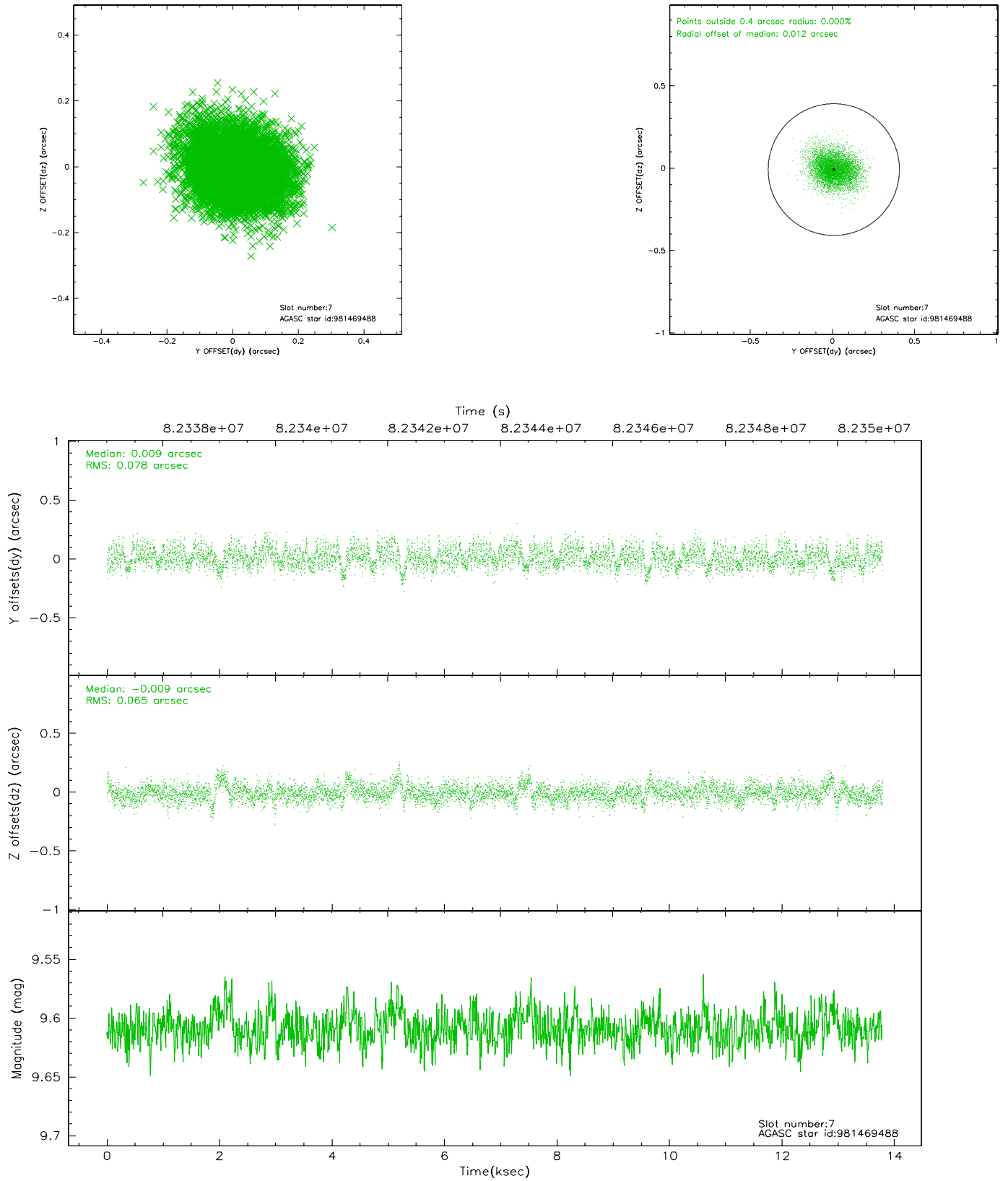
2.4.3 Slot 5



2.4.4 Slot 6

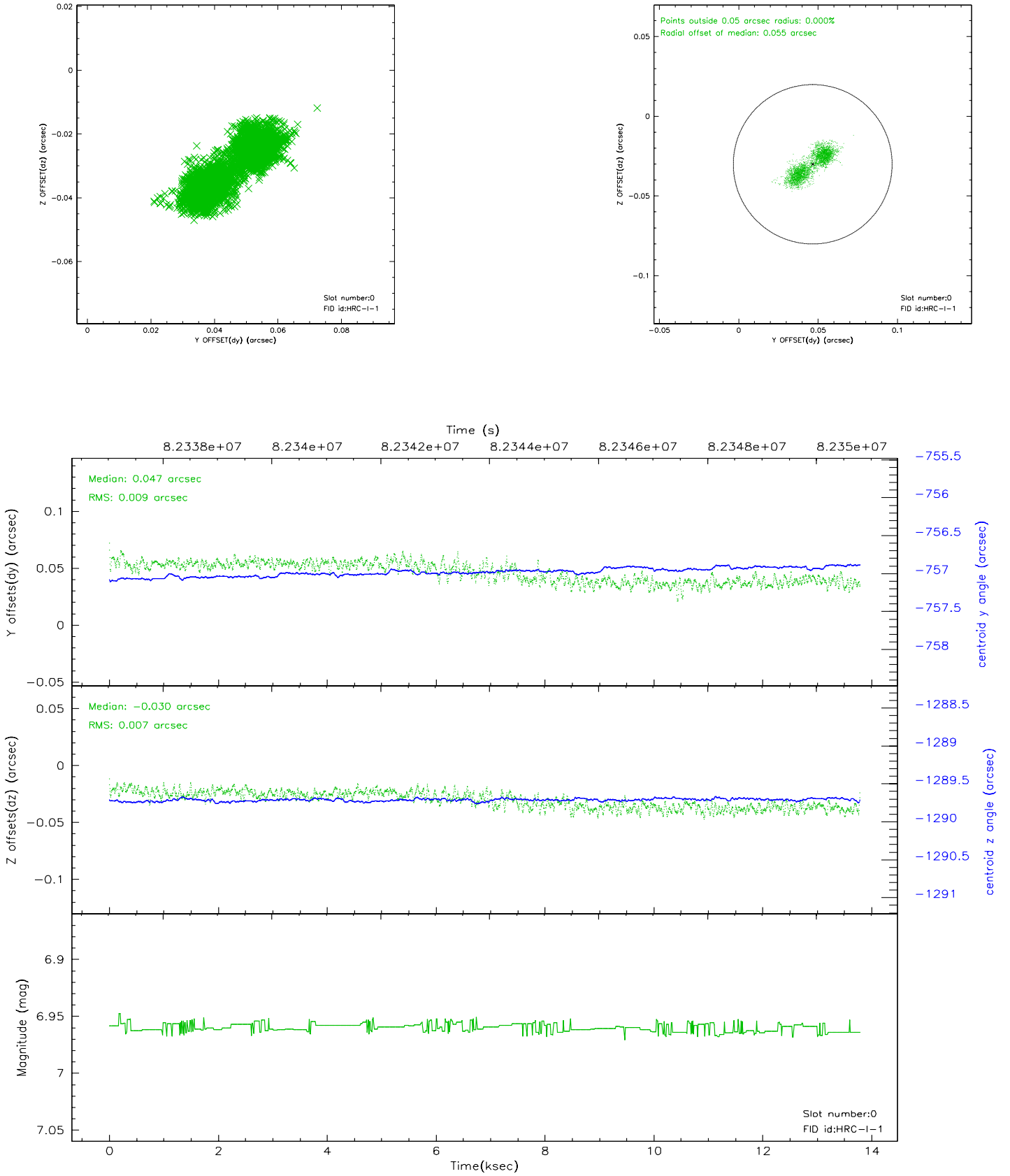


2.4.5 Slot 7

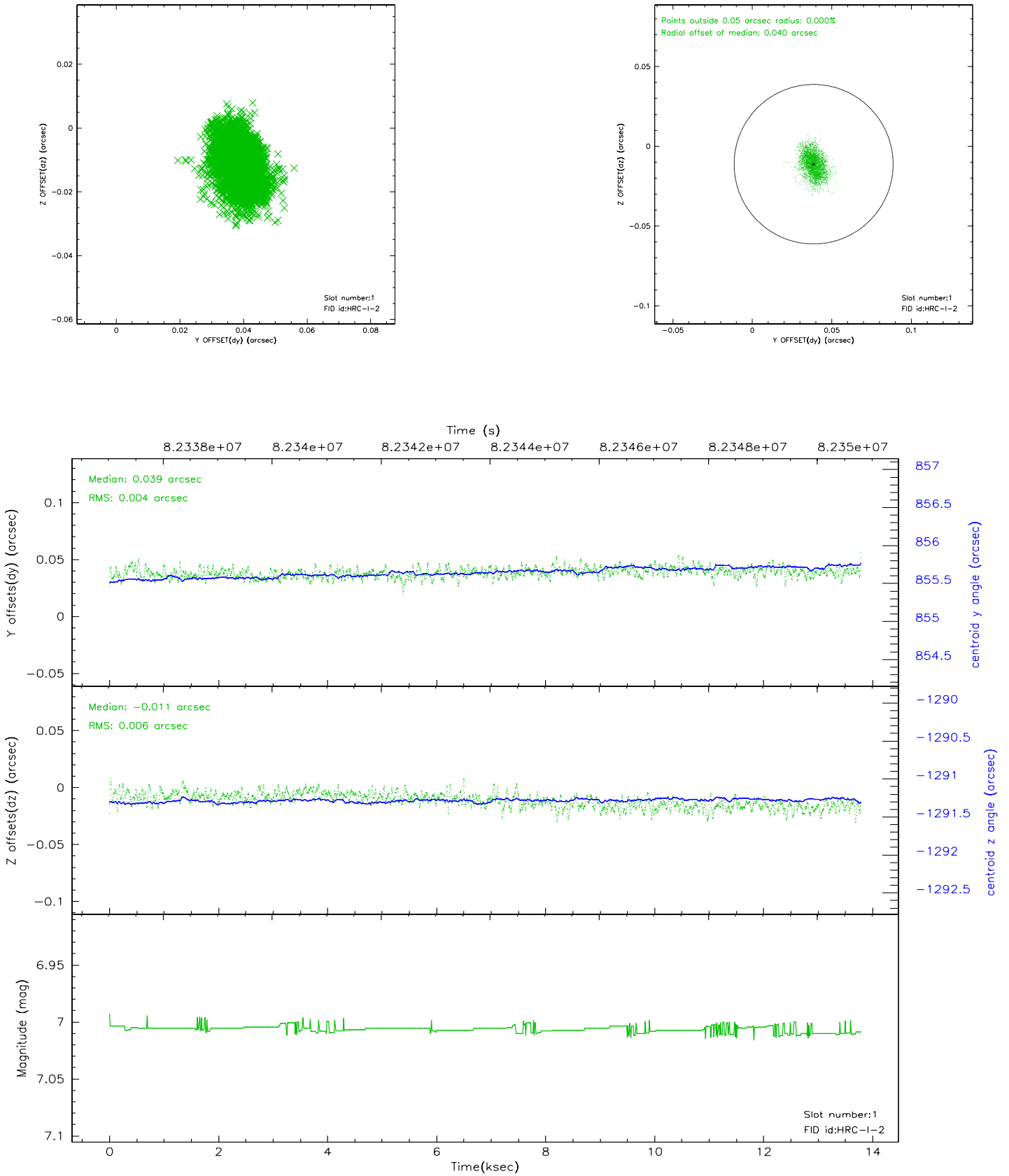


2.5 FID Slots

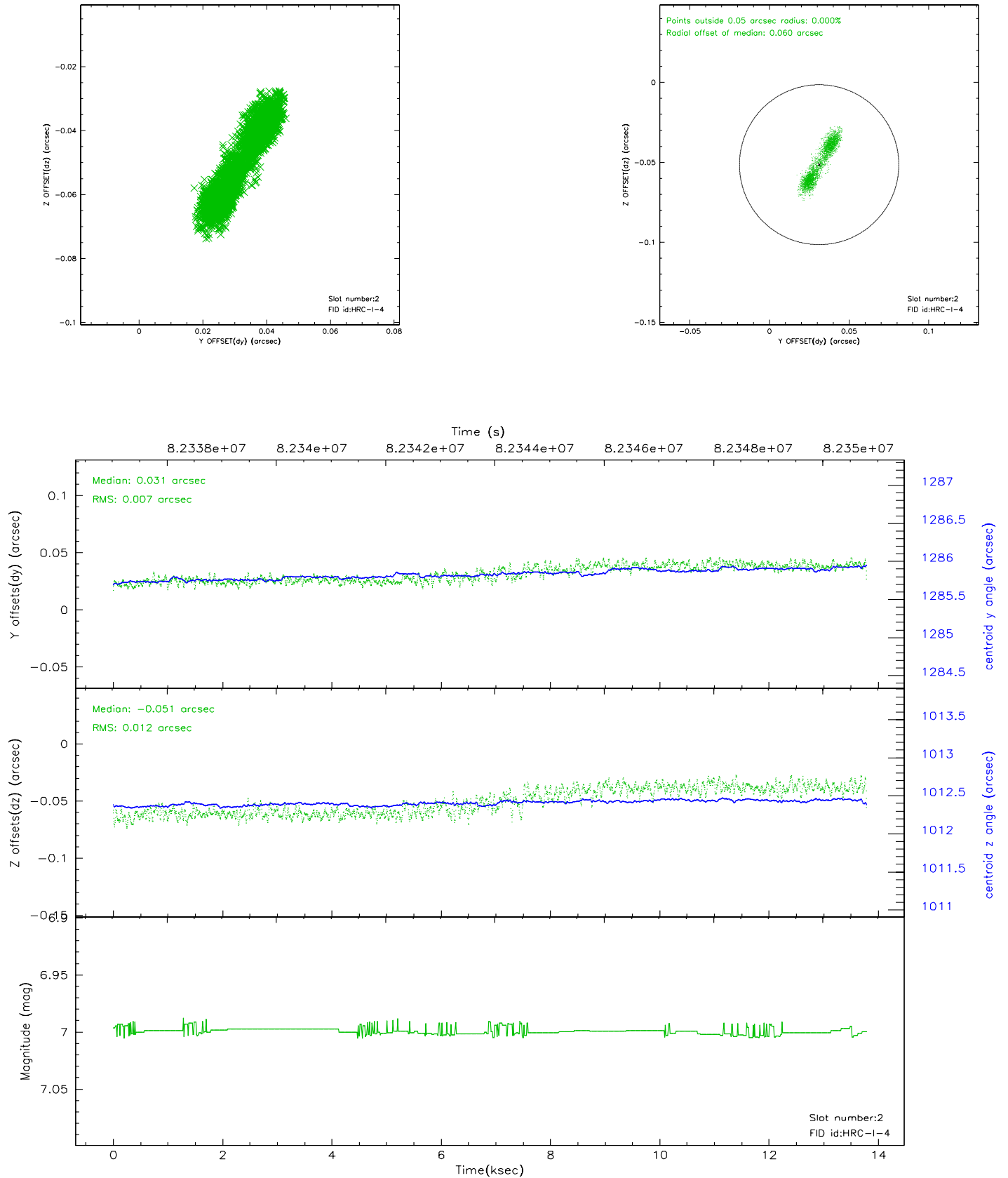
2.5.1 Slot 0



2.5.2 Slot 1

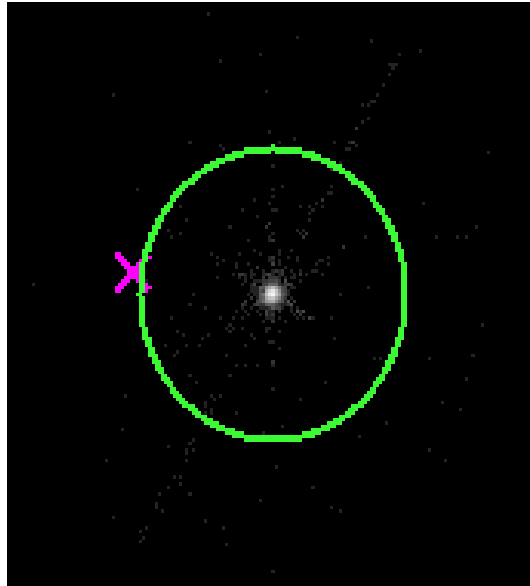


2.5.3 Slot 2



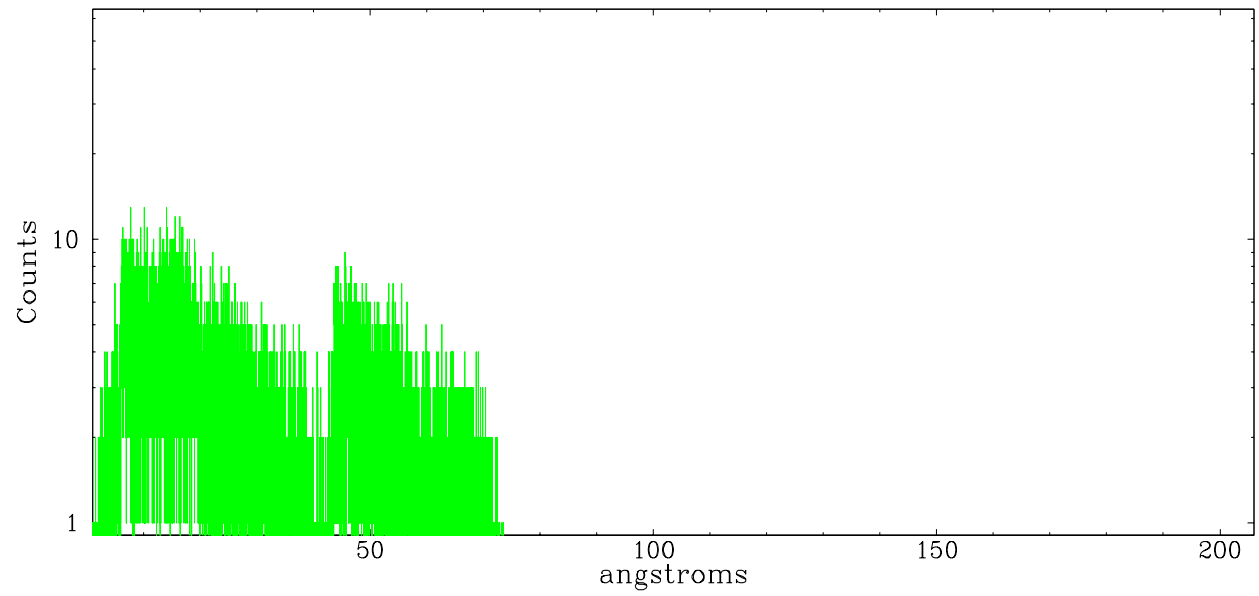
3 Gratings

3.1 LETG Arm

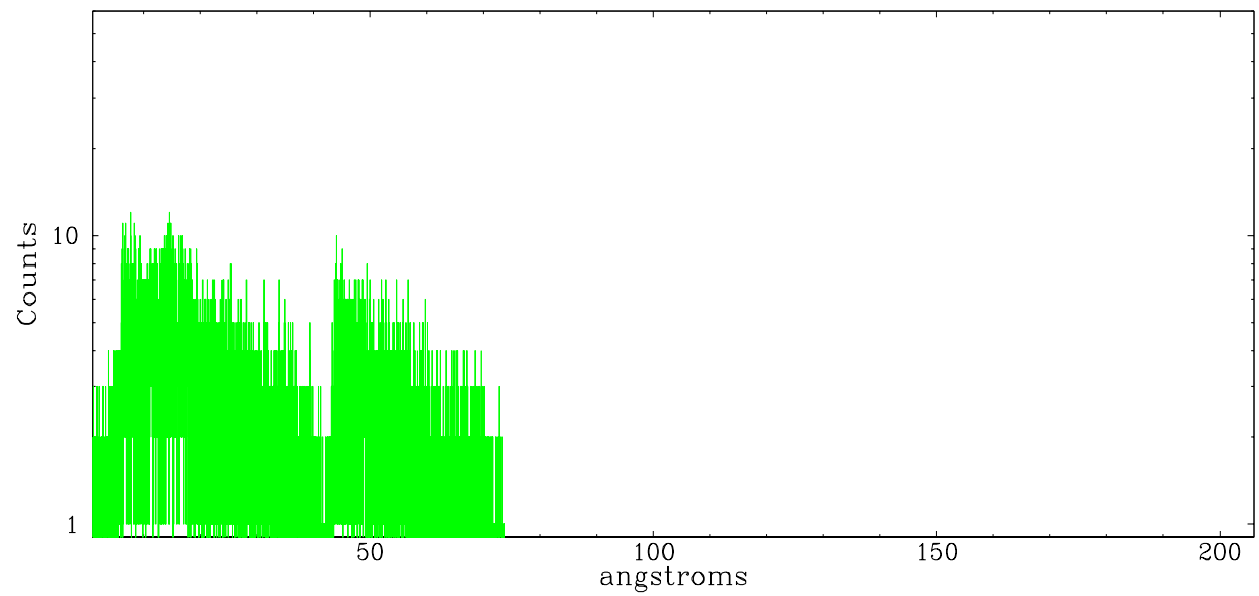


LETG Zero Order

leg order -1



leg order $+1$



A Summary

A.1 Status

V&V Scientist	Joy Nichols
V&V Date (YYYY-MM-DD)	2007.12.03
V&V Edition	1
V&V Disposition and Status	OK
V&V Charge Time	13.787

A.2 Comments

The current observation has been reprocessed as part of Repro III ('C' supplement)

the purpose of which is to update all HRC-I ObsIDs since Jan 2000 to the

latest calibrations available for that configuration. Specifically, we are updating the DEGAP solution and the Gain Maps applied. For more information see the Repro IIIC web page

at

<http://asc.harvard.edu/cda/repro3.html#IIIC>

and the associated links