

V&V Reference Report

L2 ASCDS Version : 10.3

Observation 17551 - L2 Version 1
Chandra X-Ray Center

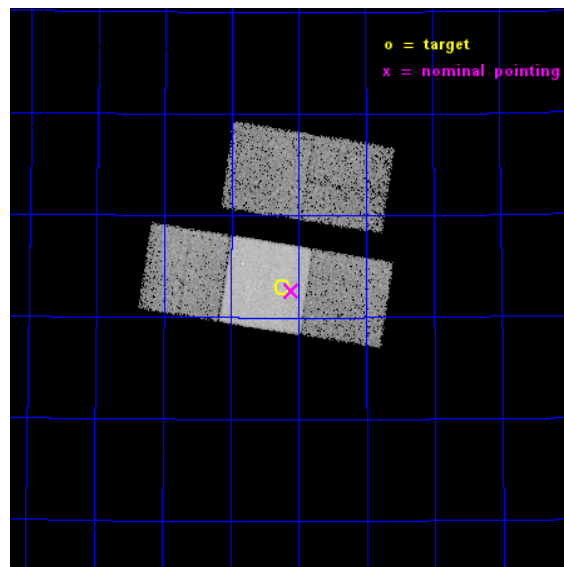
L2 Processing Date : Nov 29 2014

Contents

1	Front	2
2	OBI	3
2.1	OBI	3
2.1.1	Images	3
2.1.2	Bias	3
2.1.3	Parameters	4
2.1.4	Events	4
2.2	Compared Parameters	5
2.3	Aspect	6
2.4	Star Slots	9
2.4.1	Slot 3	9
2.4.2	Slot 4	10
2.4.3	Slot 5	11
2.4.4	Slot 6	12
2.4.5	Slot 7	13
2.5	FID Slots	14
2.5.1	Slot 0	14
2.5.2	Slot 1	15
2.5.3	Slot 2	16
A	Summary	17
A.1	Status	17
A.2	Comments	17

1 Front

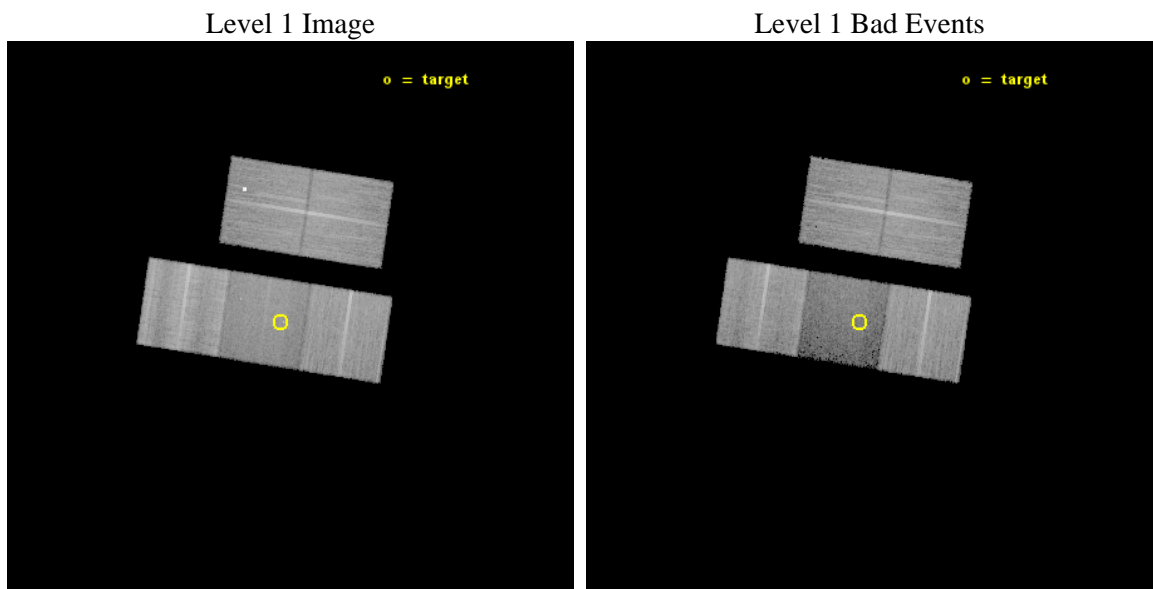
seq_num	502276	Sequence number
obs_id	17551	Observation id
title	G141.2+5.0: An Unusual New Pulsar-Wind Nebula	Proposal title
observer	Dr. Stephen Reynolds	Principal investigator
object	G141.2+5.0	Source name
dtcycle	0	
cycle	P	events from which exps? Prim/Second/Both
ra_targ	54.3125	Observer's specified target RA [deg]
dec_targ	61.883333	Observer's specified target Dec [deg]
ra_nom	54.276778801312	Nominal RA [deg]
dec_nom	61.877336806351	Nominal Dec [deg]
roll_nom	188.68813028787	Nominal Roll [deg]
revision	1	Processing version of data
ontime	32428.691380382	Sum of GTIs [s]
livetime	32004.986653842	Livetime [s]
ontime2	32425.386160076	Sum of GTIs [s]
ontime3	32425.468230009	Sum of GTIs [s]
ontime6	32428.650340378	Sum of GTIs [s]
ontime7	32428.691380382	Sum of GTIs [s]
ontime8	32422.286129773	Sum of GTIs [s]
l2events	104507	Number of level 2 events



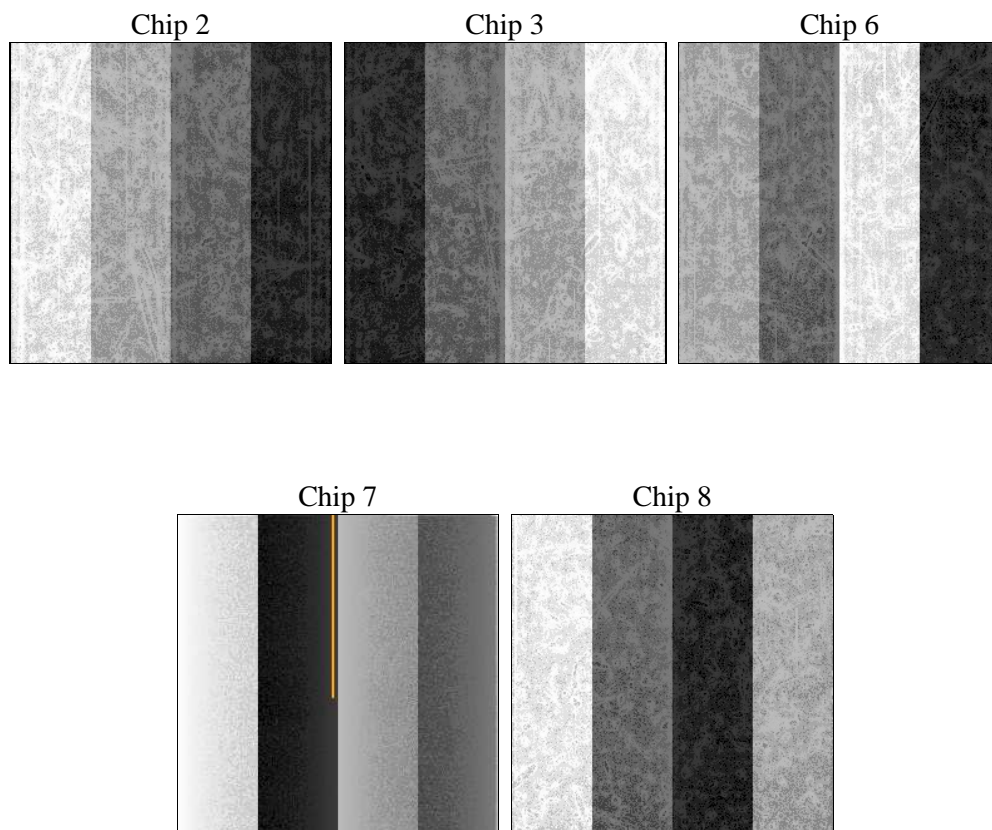
2 OBI

2.1 OBI

2.1.1 Images



2.1.2 Bias



2.1.3 Parameters

obi_num	0	Obi number	sched_exp_time	32362.000000	[s] Scheduled observation exposure time
ascdsver	10.3	Processing system revision	ontime	32428.691380382	Sum of GTIs [s]
caldbver	4.6.4	 	ontime2	32425.386160076	Sum of GTIs [s]
date	2014-11-29T14:45:42	Date and time of file creation	ontime3	32425.468230009	Sum of GTIs [s]
revision	1	Processing version of data	ontime6	32428.650340378	Sum of GTIs [s]
			ontime7	32428.691380382	Sum of GTIs [s]
			ontime8	32422.286129773	Sum of GTIs [s]
			l1events	702937	Number of level 1 events

2.1.4 Events

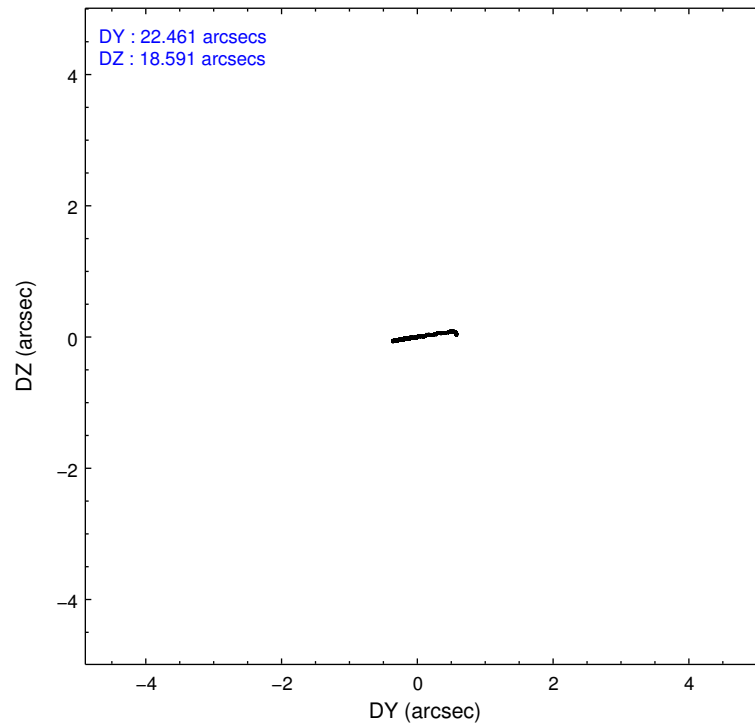
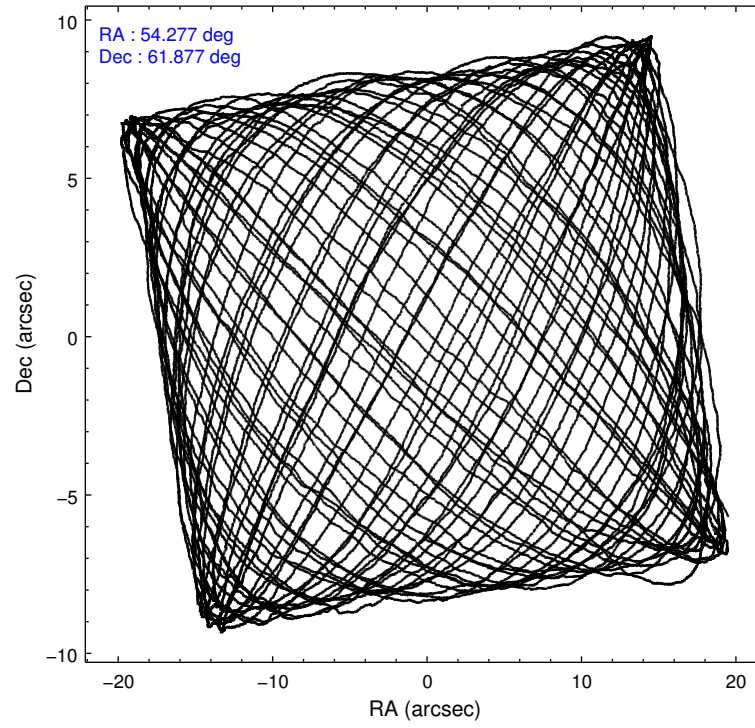
	ccd 2	ccd 3	ccd 6	ccd 7	ccd 8
level 1 events	143240	137945	140660	103868	177224
rejected events	129549	118070	125734	47242	124694
rejected %	90%	85%	89%	45%	70%

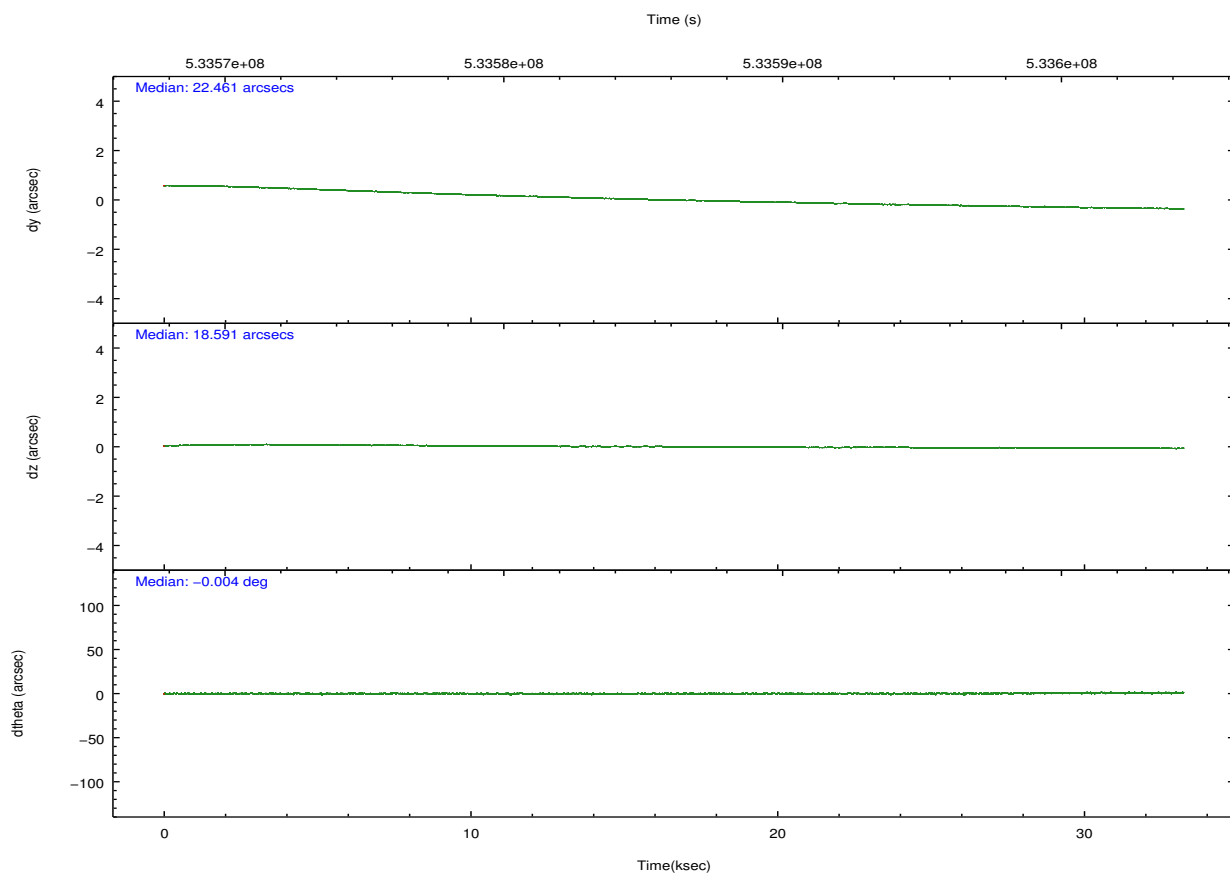
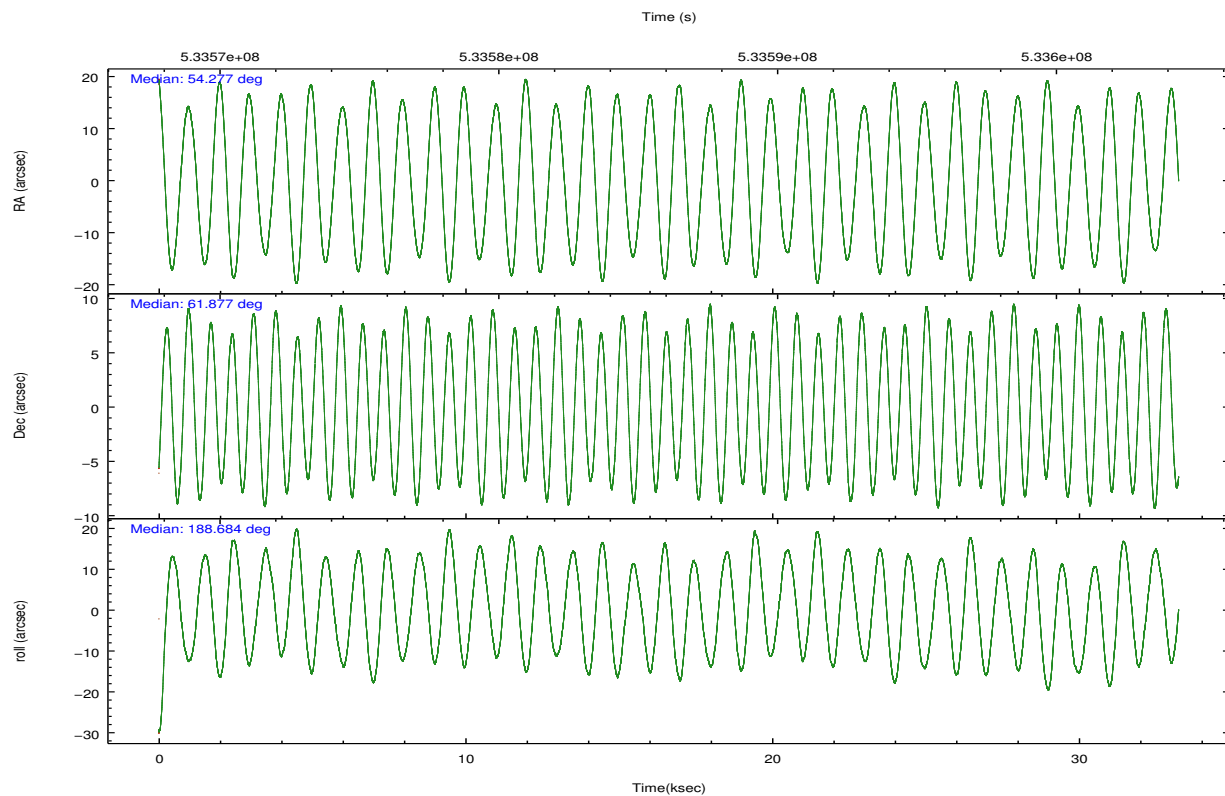
	ccd 2	ccd 3	ccd 6	ccd 7	ccd 8
grade 0 events	5408	11817	5671	6695	14707
	3%	8%	4%	6%	8%
grade 1 events	78	102	82	243	143
	0%	0%	0%	0%	0%
grade 2 events	3348	3012	3564	13863	13095
	2%	2%	2%	13%	7%
grade 3 events	1351	1382	1415	5123	5581
	0%	1%	1%	4%	3%
grade 4 events	1400	1328	1482	5074	5133
	0%	0%	1%	4%	2%
grade 5 events	3016	3911	3791	10697	6537
	2%	2%	2%	10%	3%
grade 6 events	2186	2342	2799	25879	14019
	1%	1%	1%	24%	7%
grade 7 events	126453	114051	121856	36294	118009
	88%	82%	86%	34%	66%

2.2 Compared Parameters

Parameter	Planned	Actual	Parameter	Planned	Actual
Instrument	ACIS	ACIS	Obspar format version number	7	7
Detector	ACIS-23678	ACIS-23678	Obspar file type	PREDICTED	ACTUAL
Grating	NONE	NONE	Obspar update status	NONE	UPDATED
Data mode	VFAINT	VFAINT	CCD I0 on	N	N
Observation mode	POINTING	POINTING	CCD I1 on	N	N
[deg] Pointing RA	54.321748	54.2767788013122	CCD I2 on	O1	Y
[deg] Pointing Dec	61.894778	61.87733680635129	CCD I3 on	Y	Y
[deg] Pointing Roll	188.491841	188.688130287868	CCD S0 on	N	N
[mm] SIM focus pos	-0.684267	-0.6828225247311905	CCD S1 on	N	N
[mm] SIM defocus	0	0.001444936568705701	CCD S2 on	Y	Y
[mm] SIM translation stage pos	-190.132523	-190.1425803651734	CCD S3 on	Y	Y
[mm] SIM translation stage offset	0	0.01005778216563158	CCD S4 on	Y	Y
[s] Observation start time (MET)	533570343.184000	533569057.40349	CCD S5 on	N	N
Observation start date	2014-11-28T13:57:56	2014-11-28T13:37:37	Number of optional ACIS chips dropped	0	0
[s] Observation end time (MET)	533602705.184000	533603925.85543	On-chip summing requested	N	N
Observation end date	2014-11-28T22:57:18	2014-11-28T23:18:45	Subarray requested	NONE	NONE
Read mode	TIMED	TIMED	Alternating exposures requested	N	N
			[s] Primary exposure time	0.000000	3.1

2.3 Aspect



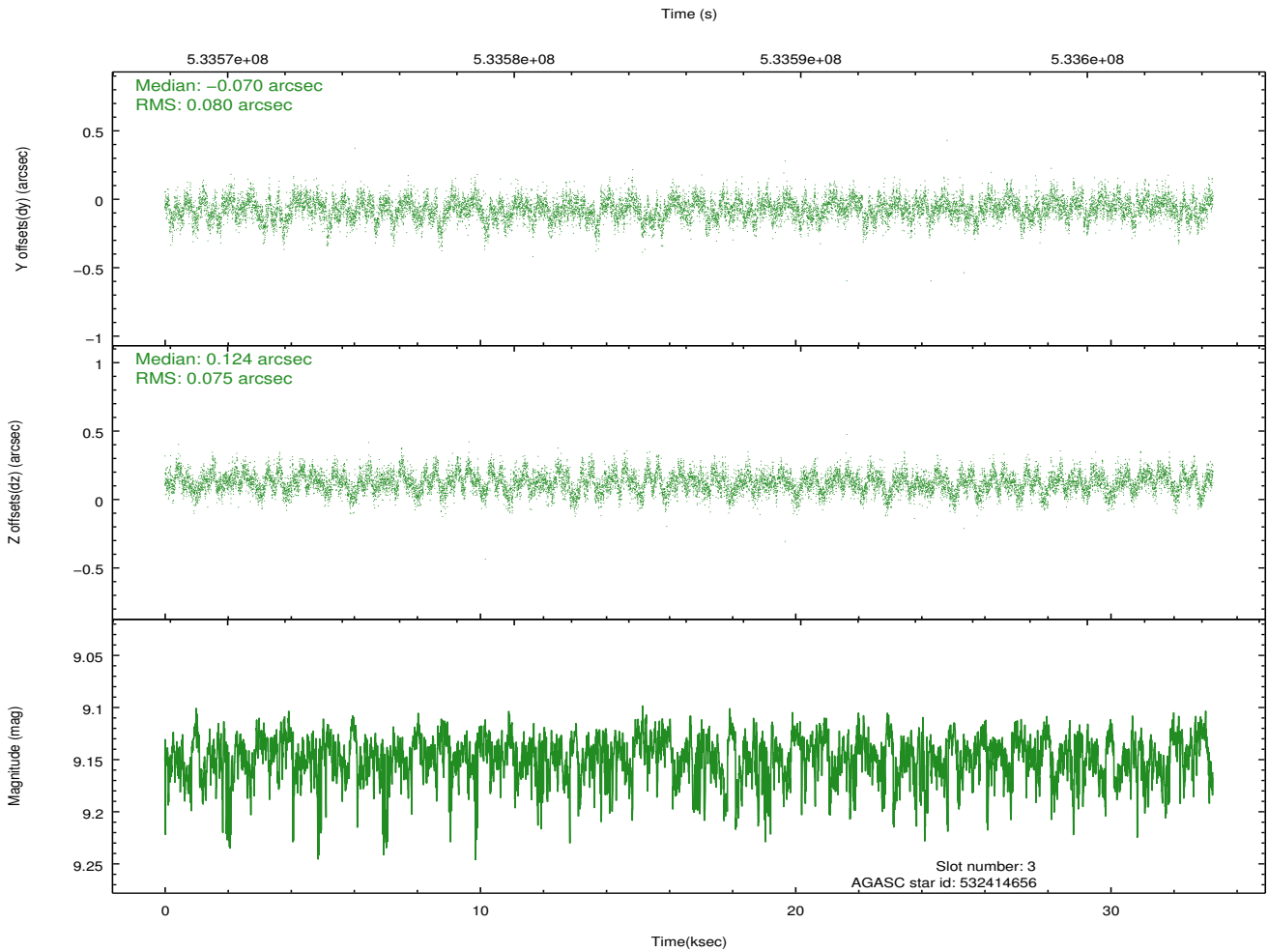
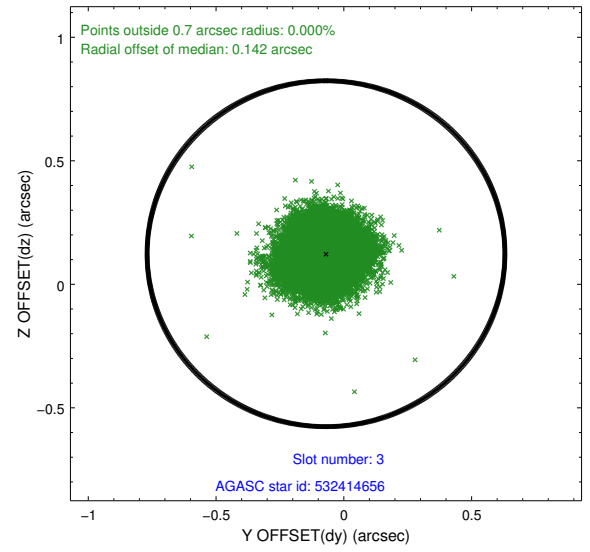
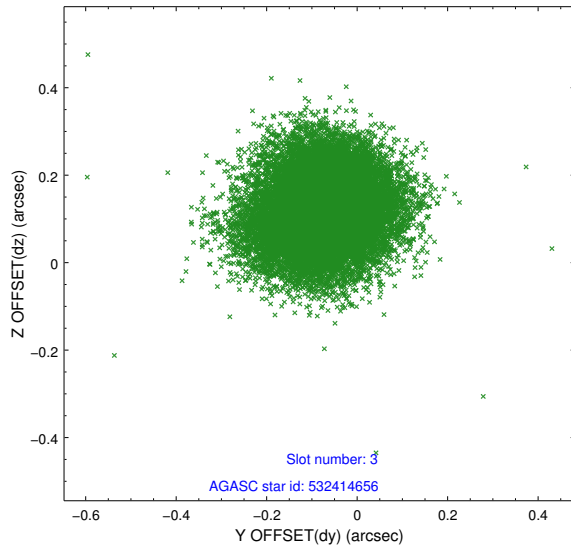


Slot Statistics

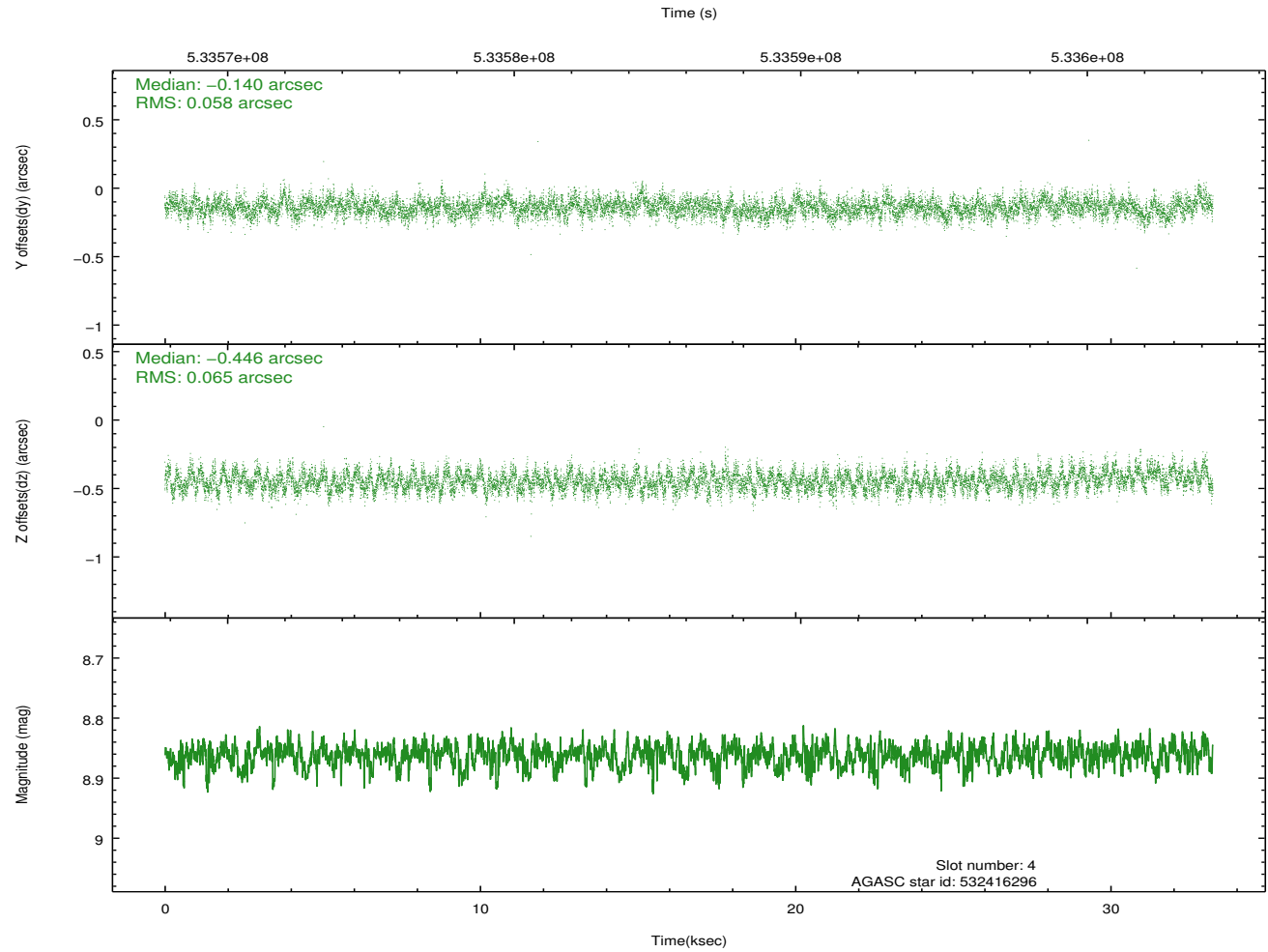
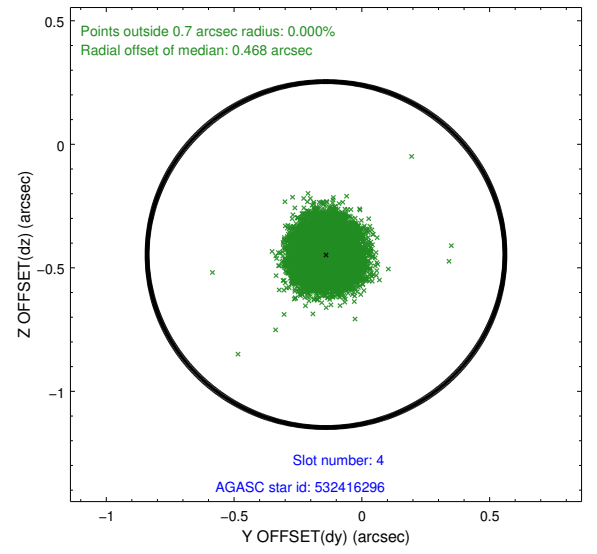
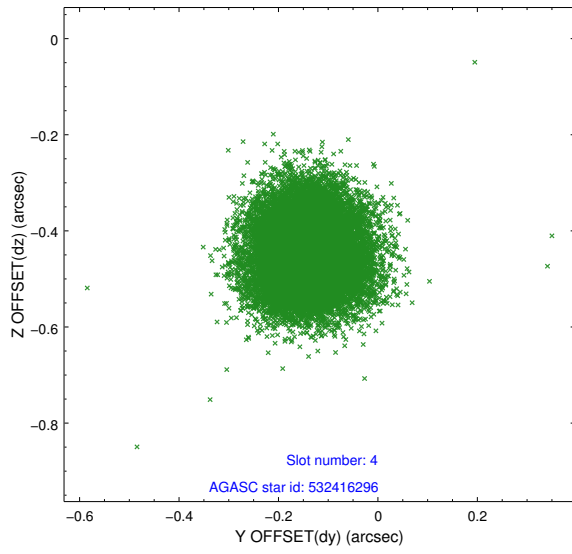
slot	status	used	id	mag	n_pts	med_dy	med_dz	dr1	dr2	ra	dec	mean_y	mean_z
0	FID		ACIS-S-2	7.05	8109	-0.124	-0.069	0.009	0.017	0.000000	0.000000	-775.81	-1740.08
1	FID		ACIS-S-4	7.15	8109	0.311	0.078	0.013	0.024	0.000000	0.000000	2137.89	168.48
2	FID		ACIS-S-5	7.17	8109	-0.220	-0.001	0.012	0.018	0.000000	0.000000	-1828.68	162.15
3	GUIDE	used	532414656	9.15	16206	-0.070	0.124	0.117	0.188	52.946768	61.858554	2324.99	-239.89
4	GUIDE	used	532416296	8.86	16210	-0.140	-0.446	0.093	0.148	53.188893	61.249025	2281.11	1994.95
5	GUIDE	used	532942680	9.03	16205	0.151	0.010	0.148	0.232	53.338812	62.229928	1451.33	-1448.55
6	GUIDE	used	532943112	8.91	16205	0.035	-0.005	0.134	0.210	52.948004	61.967076	2257.16	-624.61
7	GUIDE	used	532947168	7.54	16215	0.015	0.326	0.077	0.125	53.758920	62.525324	589.68	-2386.80

2.4 Star Slots

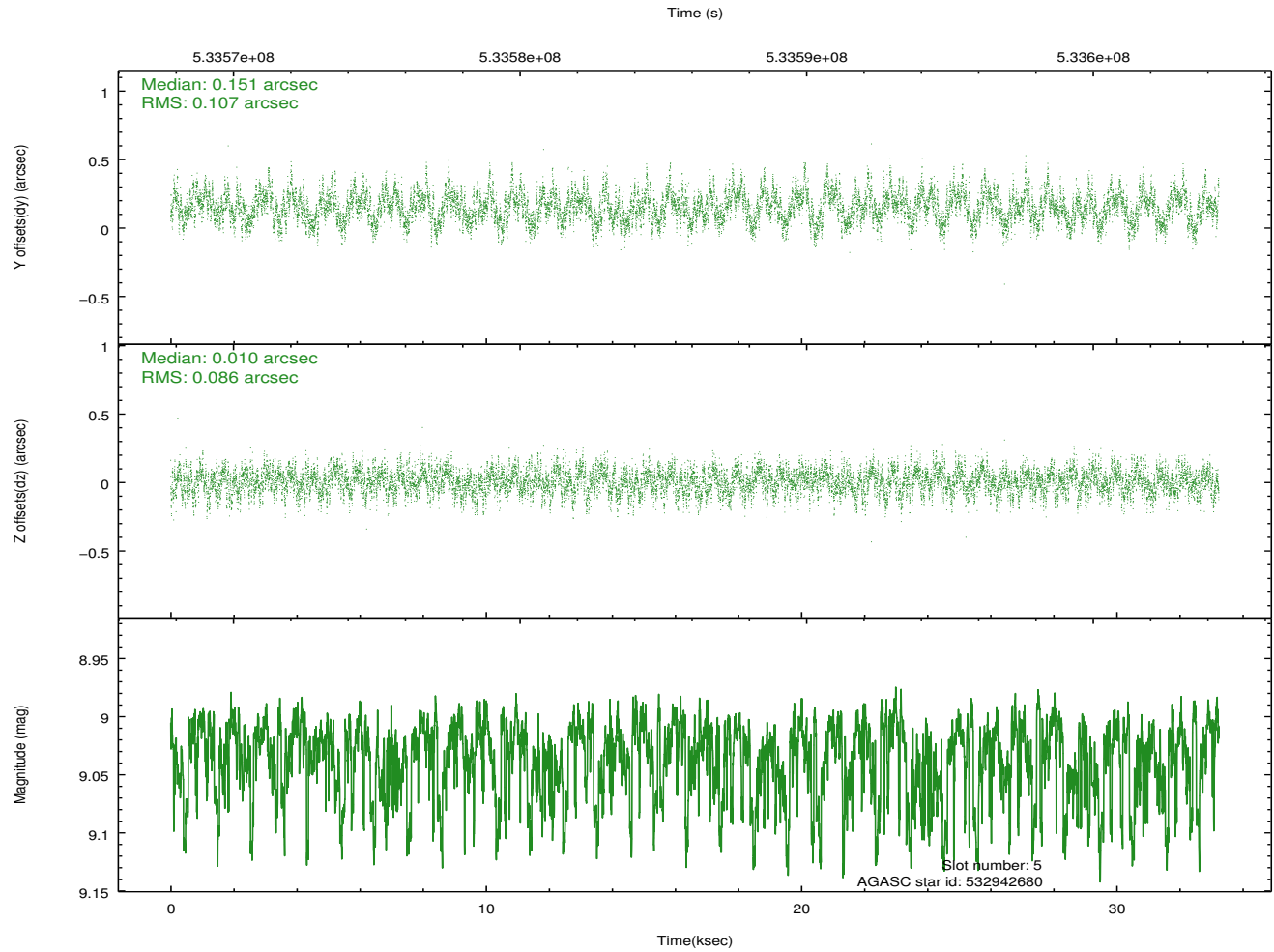
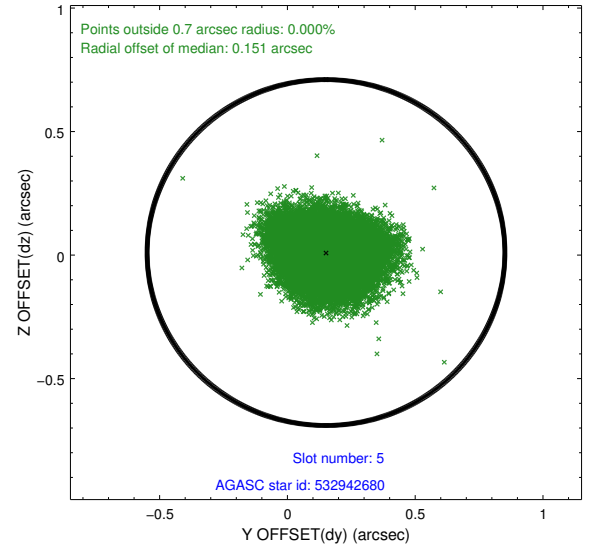
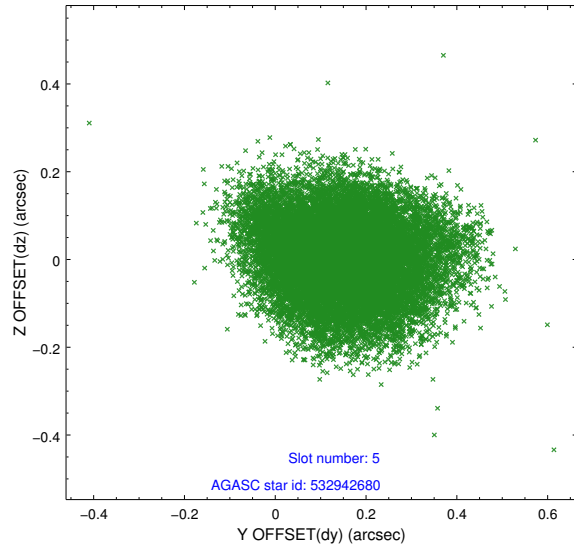
2.4.1 Slot 3



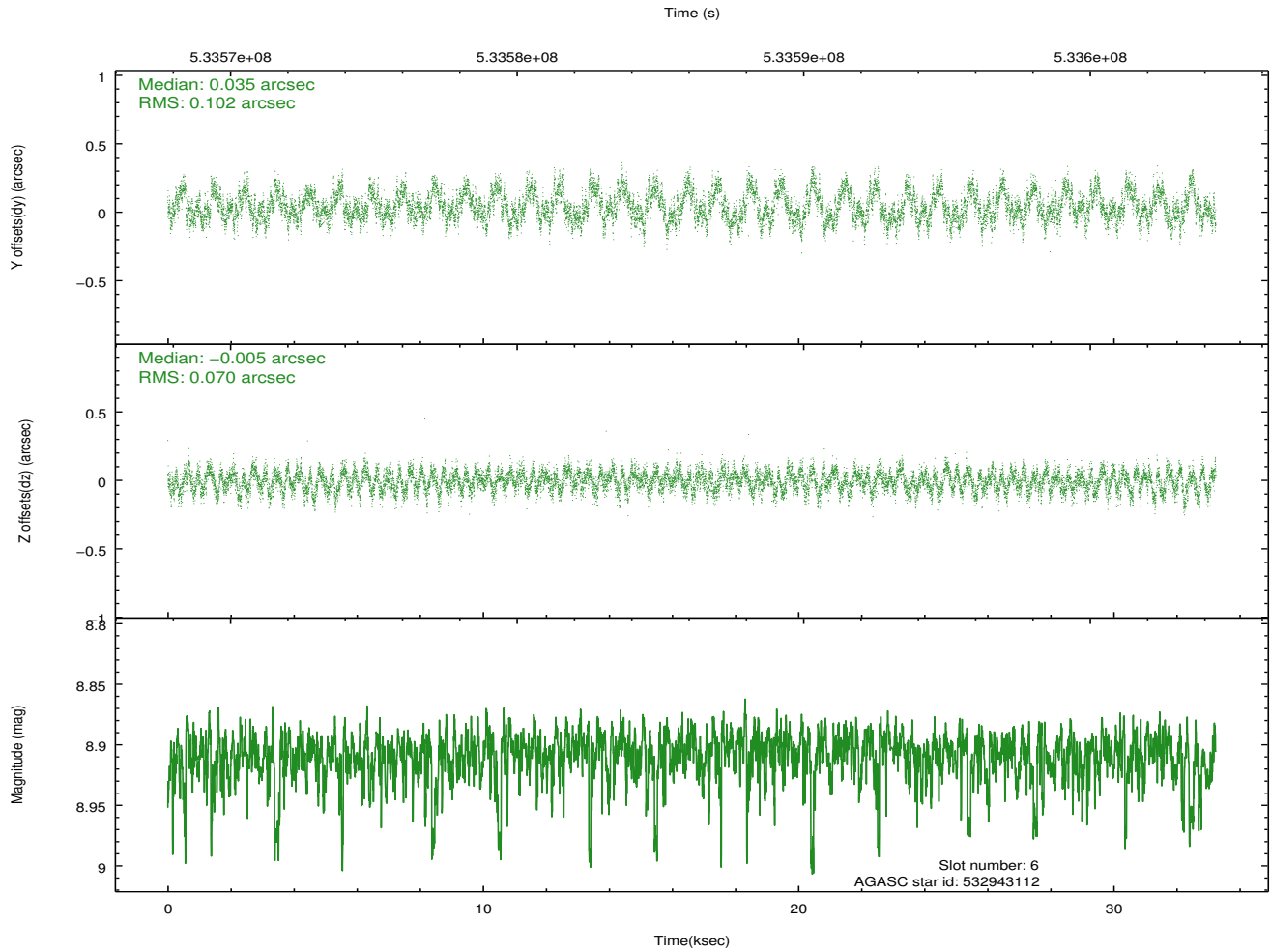
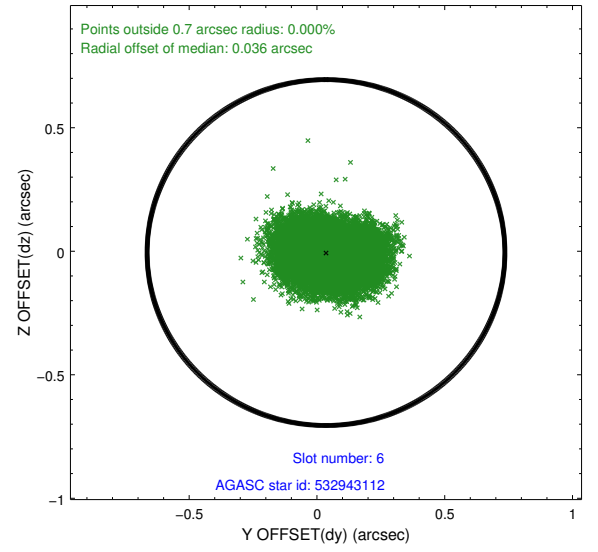
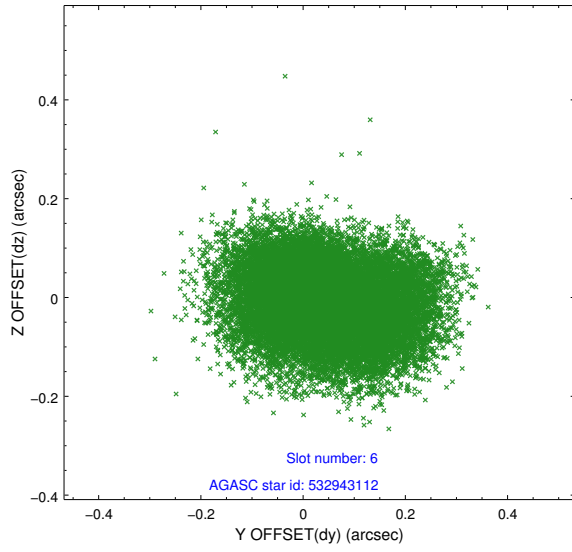
2.4.2 Slot 4



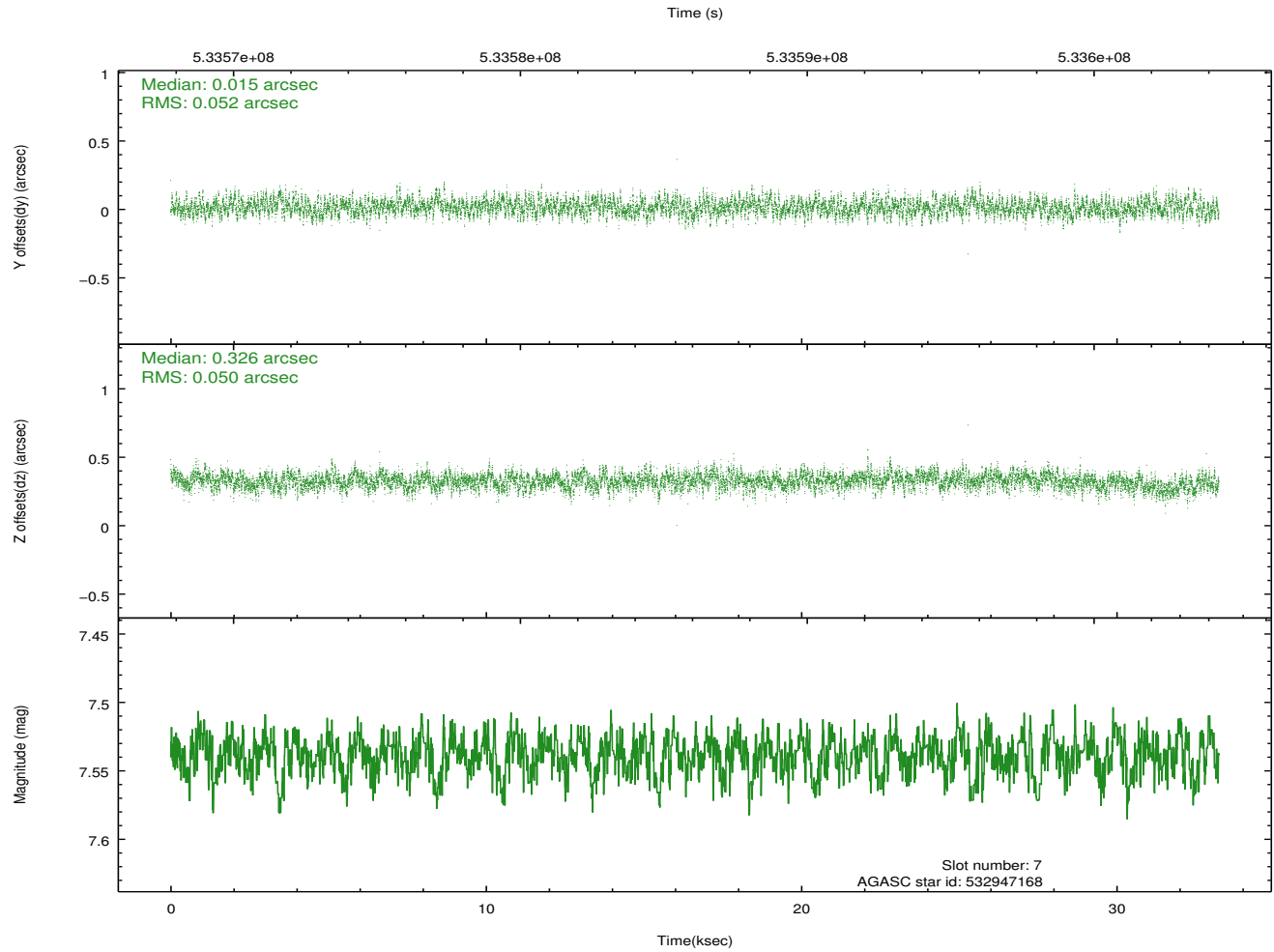
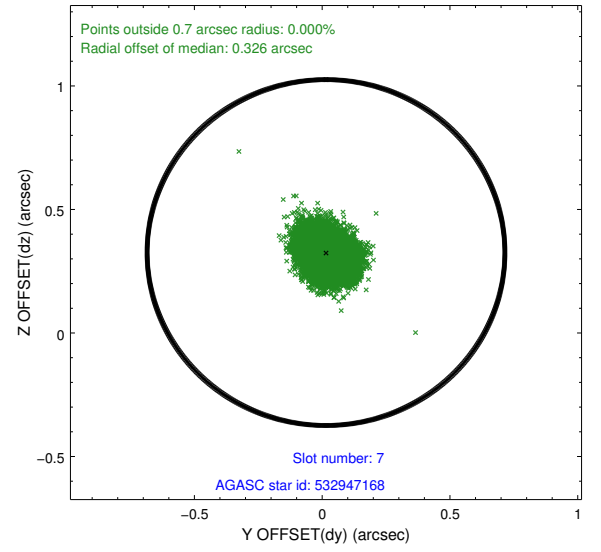
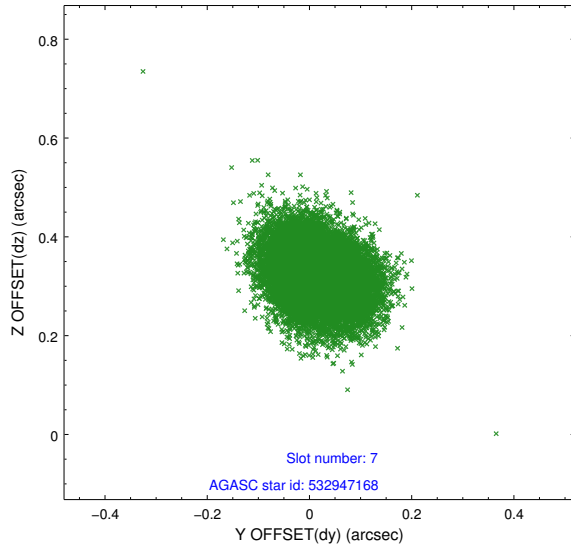
2.4.3 Slot 5



2.4.4 Slot 6

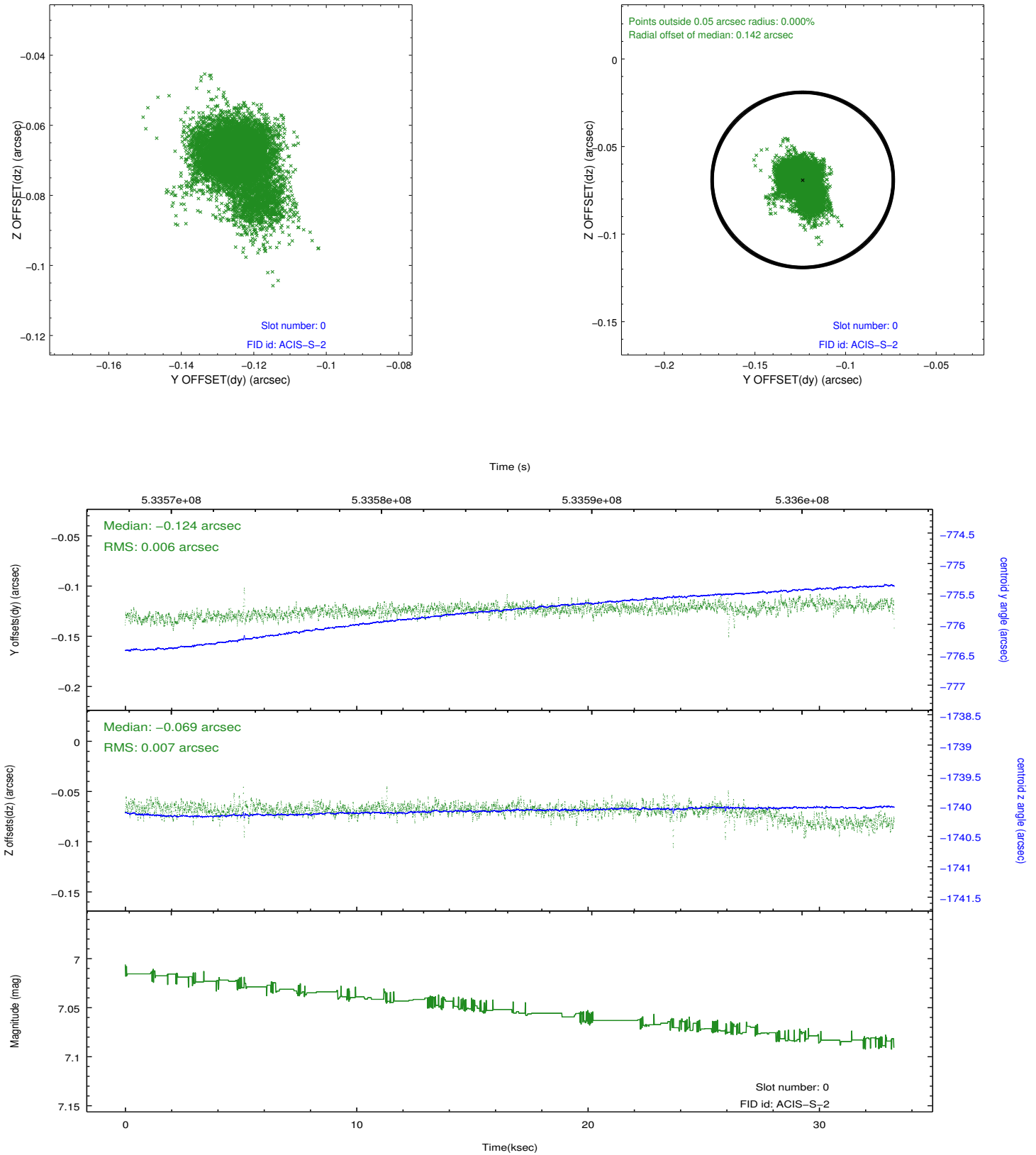


2.4.5 Slot 7

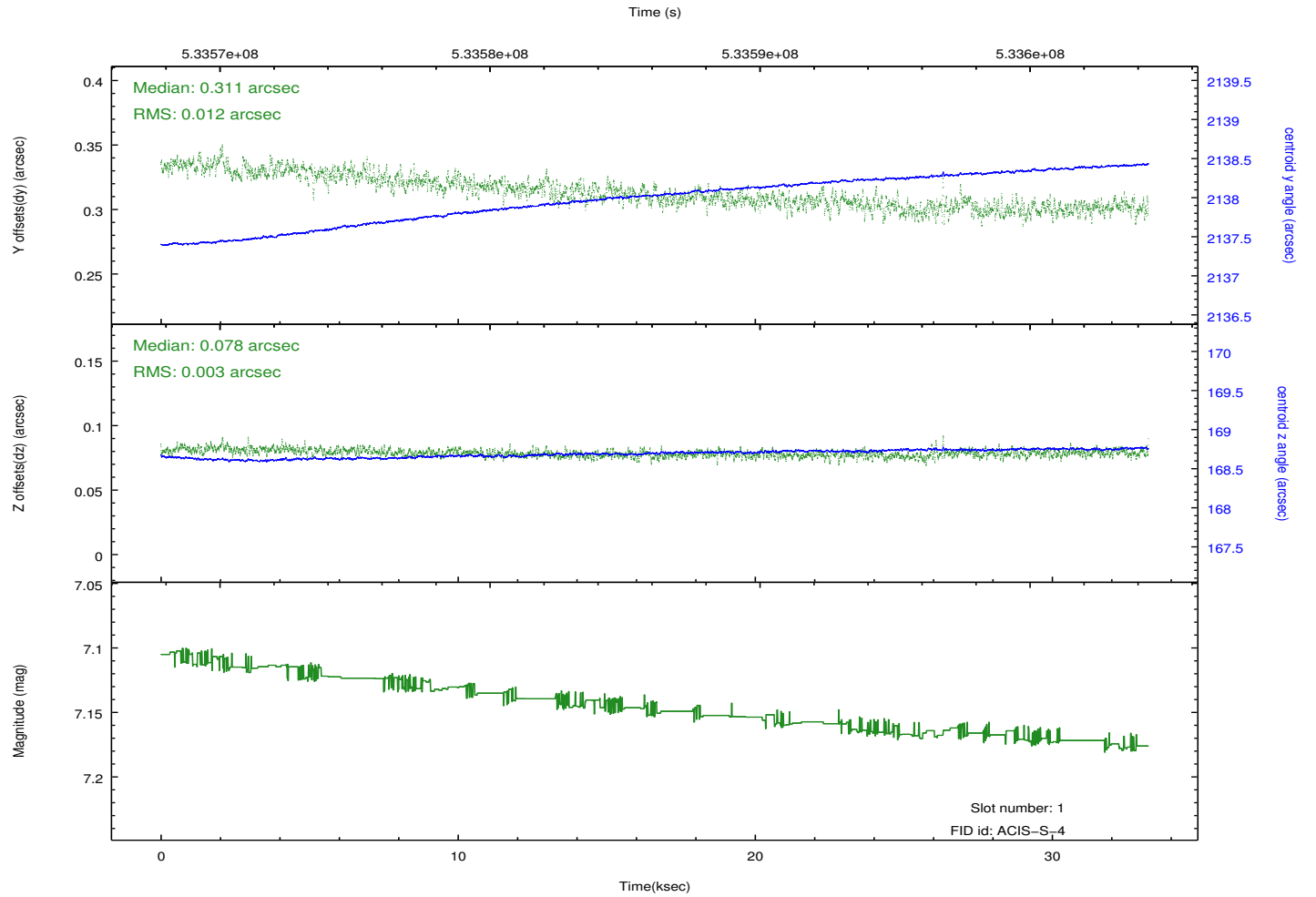
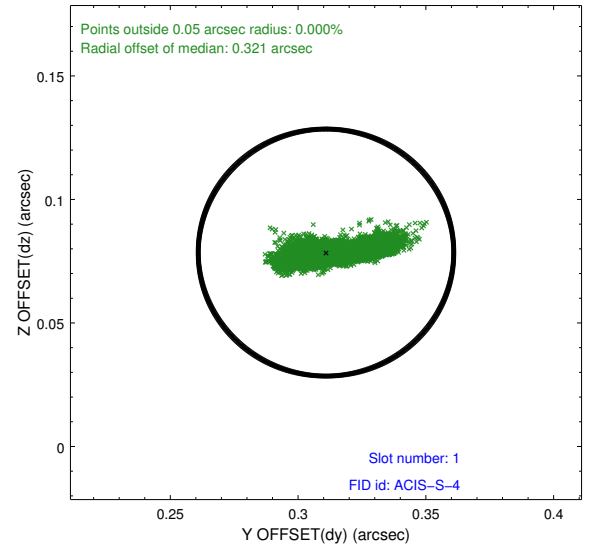
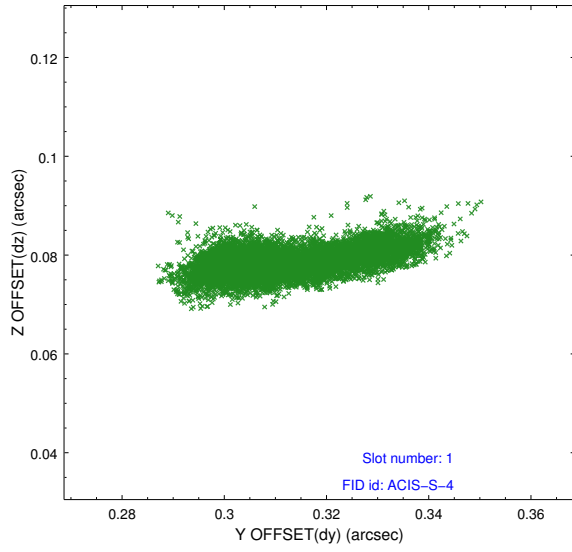


2.5 FID Slots

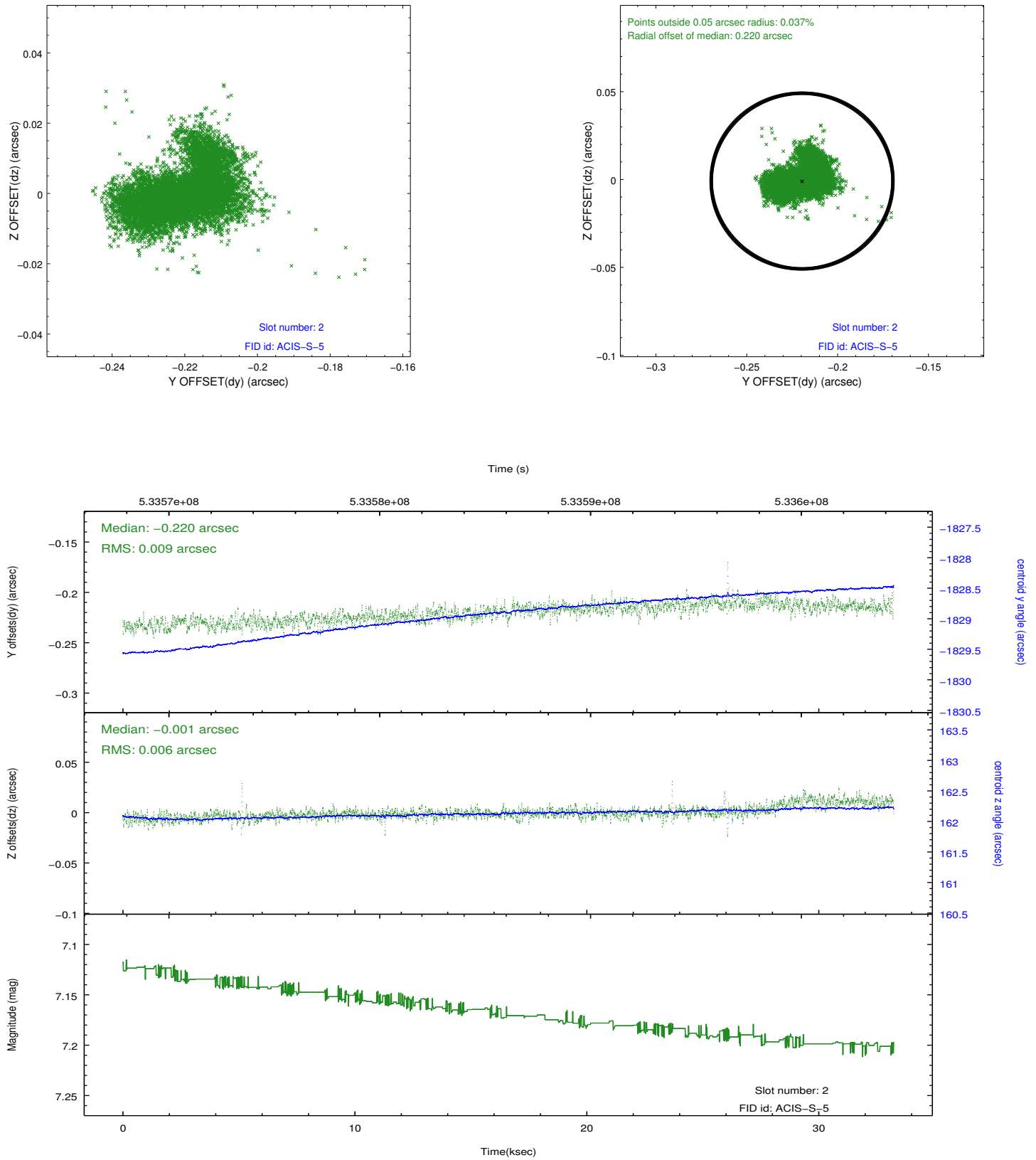
2.5.1 Slot 0



2.5.2 Slot 1



2.5.3 Slot 2



A Summary

A.1 Status

V&V Scientist	Joy Nichols
V&V Date (YYYY-MM-DD)	2014.12.01
V&V Edition	1
V&V Disposition and Status	OK
V&V Charge Time	32.428691380382

A.2 Comments