

V&V Reference Report

L2 ASCDS Version : 8.4.5

Observation 1661 - L2 Version 3
Chandra X-Ray Center

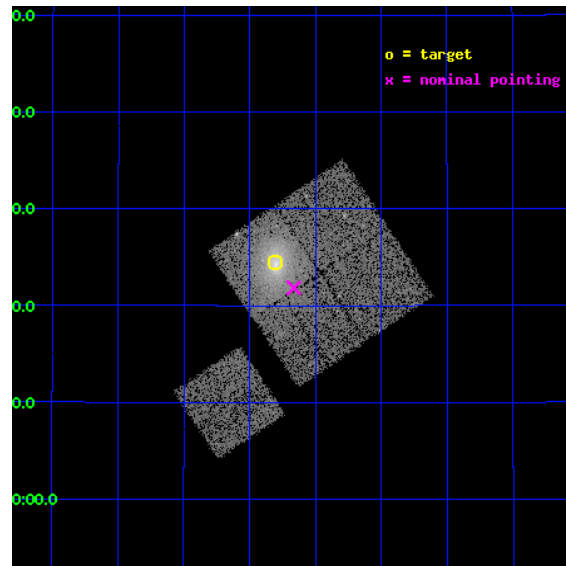
L2 Processing Date : Sep 18 2012

Contents

1	Front	2
2	OBI	3
2.1	OBI	3
2.1.1	Images	3
2.1.2	Bias	3
2.1.3	Parameters	4
2.1.4	Events	4
2.2	Compared Parameters	5
2.3	Aspect	6
2.4	Star Slots	9
2.4.1	Slot 3	9
2.4.2	Slot 4	10
2.4.3	Slot 5	11
2.4.4	Slot 6	12
2.4.5	Slot 7	13
2.5	FID Slots	14
2.5.1	Slot 0	14
2.5.2	Slot 1	15
2.5.3	Slot 2	16
A	Summary	17
A.1	Status	17
A.2	Comments	17

1 Front

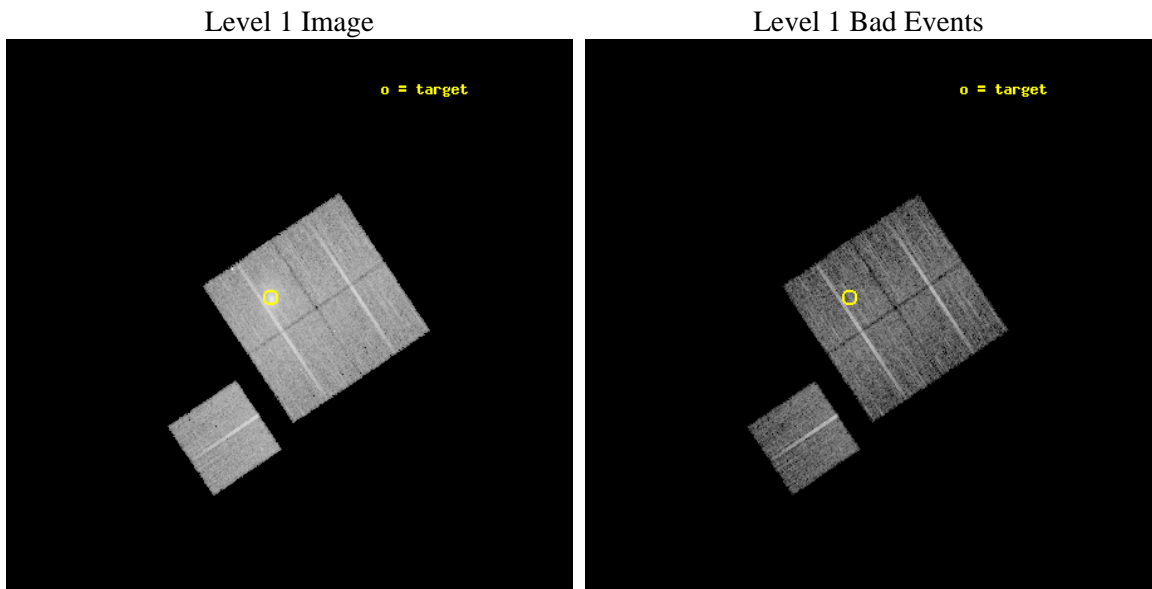
seq_num	800129	Sequence number
obs_id	1661	Observation id
title	DETERMINATION OF H0 AND Q0, 2000 PART 1	Proposal title
observer	DR. LEON VANSPEYBROECK	Principal investigator
object	A1413	Source name
dtcycle	0	
cycle	P	events from which exps? Prim/Second/Both
ra_targ	178.825833	Observer's specified target RA [deg]
dec_targ	23.408	Observer's specified target Dec [deg]
ra_nom	178.79103073674	Nominal RA [deg]
dec_nom	23.363988070128	Nominal Dec [deg]
roll_nom	236.21189194994	Nominal Roll [deg]
revision	3	Processing version of data
ontime	9872.3076075315	Sum of GTIs [s]
livetime	9743.318640752	Livetime [s]
ontime0	9875.3254677057	Sum of GTIs [s]
ontime1	9875.3665076941	Sum of GTIs [s]
ontime2	9875.4075476974	Sum of GTIs [s]
ontime3	9872.3076075315	Sum of GTIs [s]
ontime6	9875.2844277024	Sum of GTIs [s]
l2events	52784	Number of level 2 events



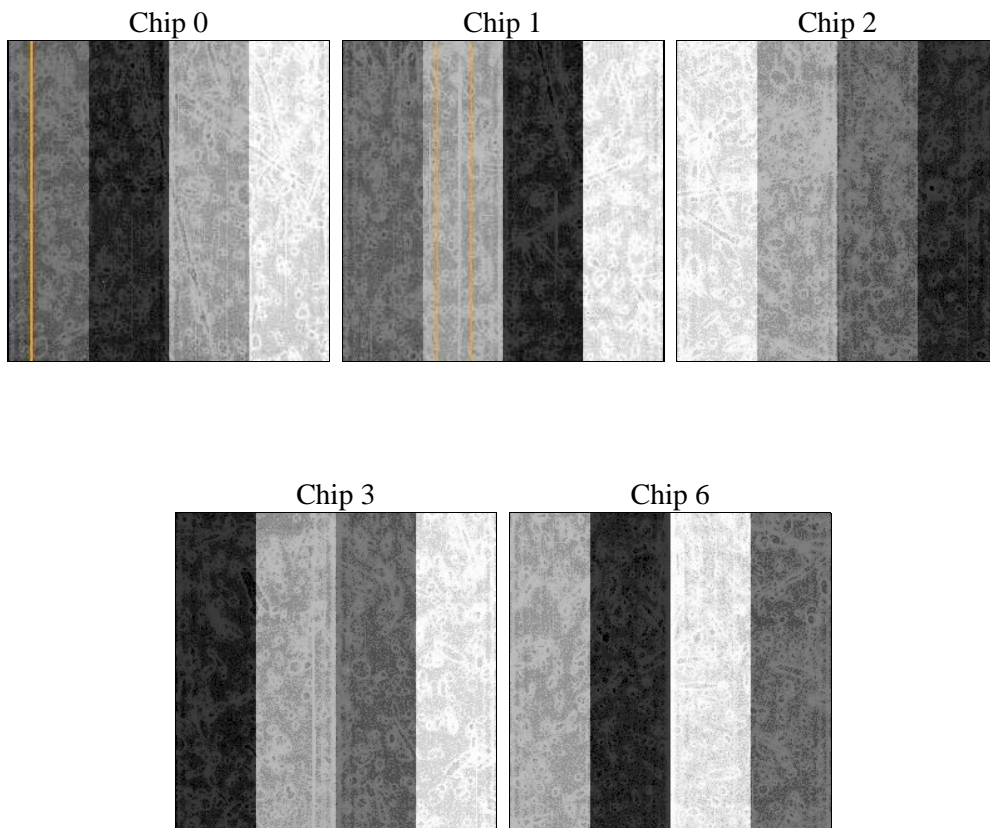
2 OBI

2.1 OBI

2.1.1 Images



2.1.2 Bias



2.1.3 Parameters

obi_num	0	Obi number	sched_exp_time	10000.000000	[s] Scheduled observation exposure time
ascdsver	8.4.5	Processing system revision	ontime	9872.3076075315	Sum of GTIs [s]
caldbver	4.5.1.1	 	ontime0	9875.3254677057	Sum of GTIs [s]
date	2012-09-18T23:10:59	Date and time of file creation	ontime1	9875.3665076941	Sum of GTIs [s]
revision	3	Processing version of data	ontime2	9875.4075476974	Sum of GTIs [s]
			ontime3	9872.3076075315	Sum of GTIs [s]
			ontime6	9875.2844277024	Sum of GTIs [s]
			l1events	329758	Number of level 1 events

2.1.4 Events

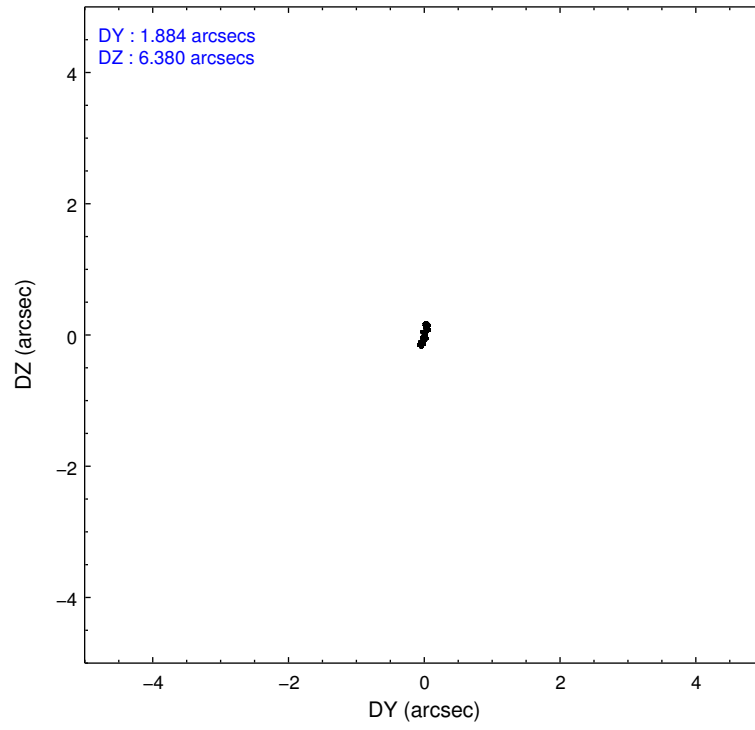
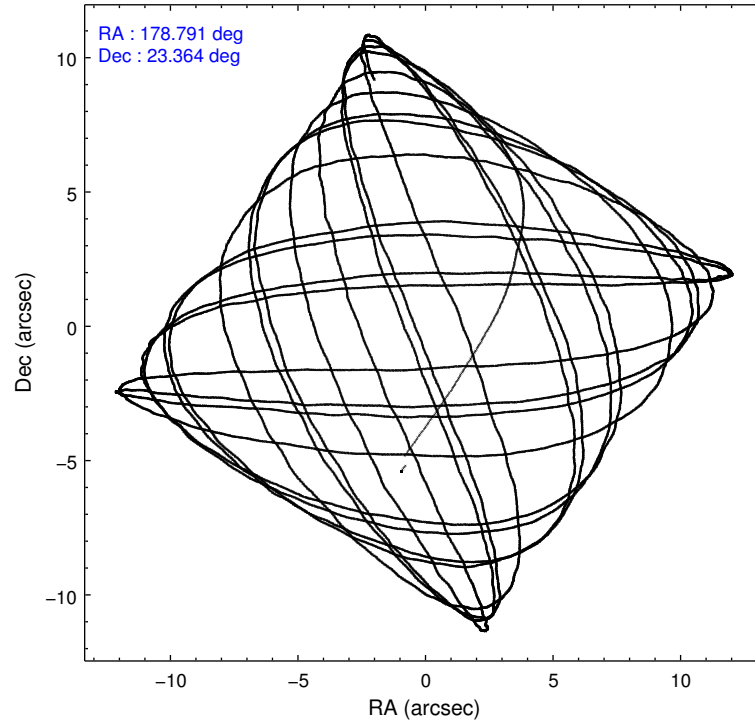
	ccd 0	ccd 1	ccd 2	ccd 3	ccd 6
level 1 events	58985	60619	63469	83989	62696
rejected events	51282	52131	55289	56356	55733
rejected %	86%	85%	87%	67%	88%

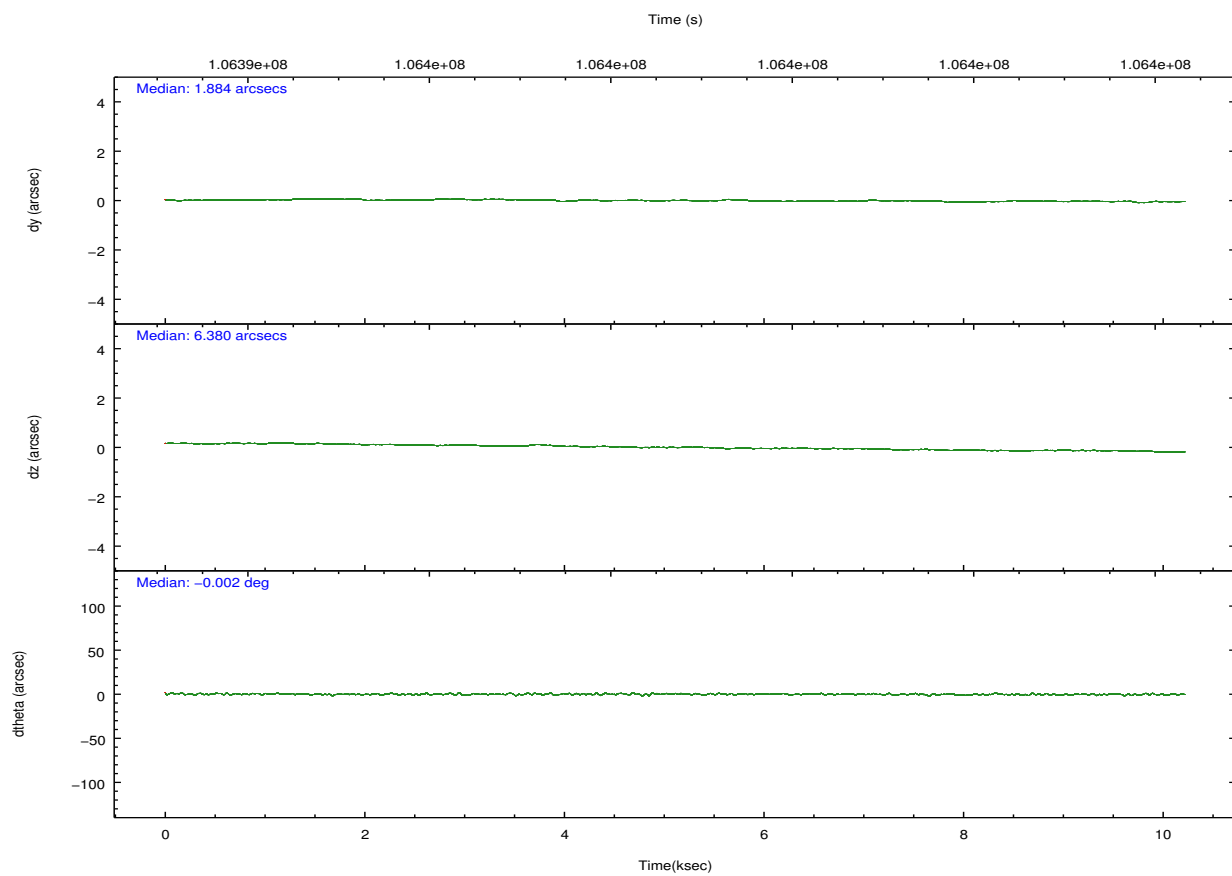
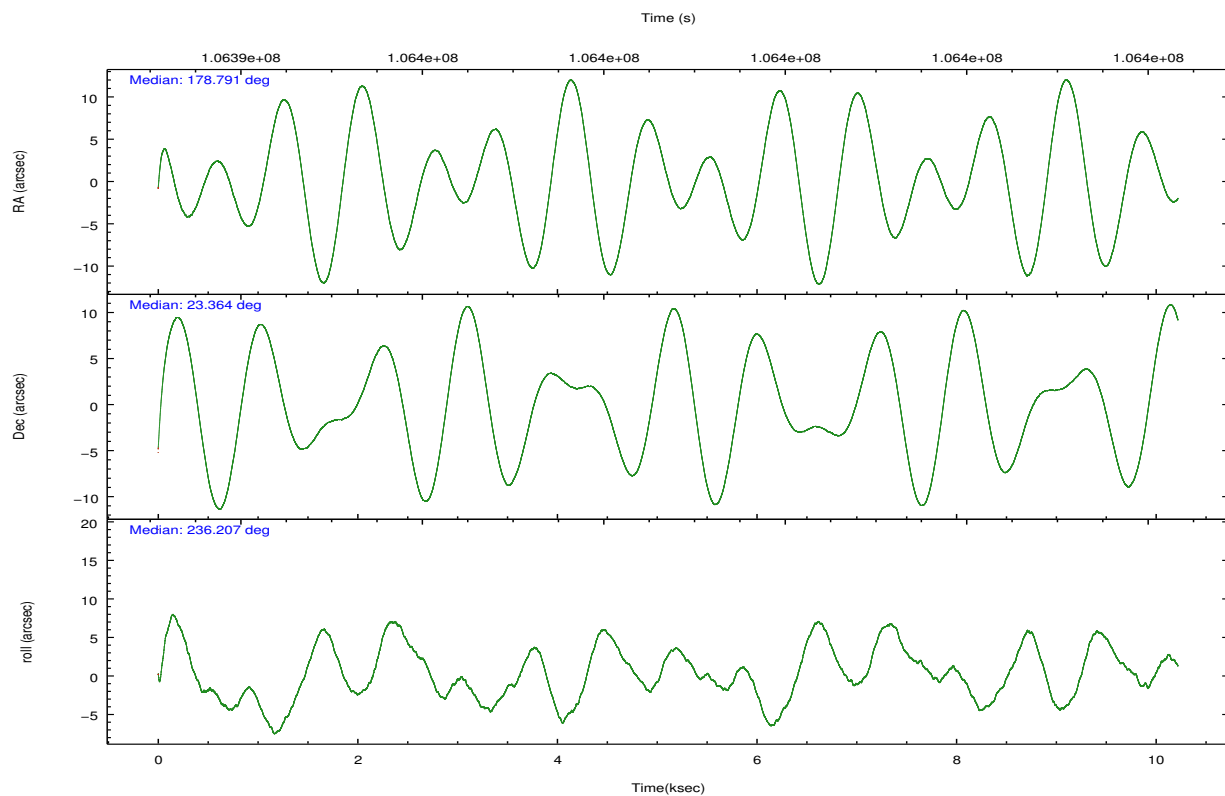
	ccd 0	ccd 1	ccd 2	ccd 3	ccd 6
grade 0 events	3335	3780	3890	19783	2765
	5%	6%	6%	23%	4%
grade 1 events	42	27	40	108	33
	0%	0%	0%	0%	0%
grade 2 events	1594	1623	1605	3516	1364
	2%	2%	2%	4%	2%
grade 3 events	770	797	673	1306	715
	1%	1%	1%	1%	1%
grade 4 events	684	820	724	1274	754
	1%	1%	1%	1%	1%
grade 5 events	2260	2440	2216	2557	2541
	3%	4%	3%	3%	4%
grade 6 events	1330	1472	1291	1774	1368
	2%	2%	2%	2%	2%
grade 7 events	48970	49660	53030	53671	53156
	83%	81%	83%	63%	84%

2.2 Compared Parameters

Parameter	Planned	Actual	Parameter	Planned	Actual
Instrument	ACIS	ACIS	Obspar format version number	7	7
Detector	ACIS-01236	ACIS-01236	Obspar file type	PREDICTED	ACTUAL
Grating	NONE	NONE	Obspar update status	NONE	UPDATED
Data mode	VFAINT	VFAINT	Number of optional ACIS chips dropped	0	0
Observation mode	POINTING	POINTING	On-chip summing requested	N	N
[deg] Pointing RA	178.792992	178.7910307367434	Subarray requested	NONE	NONE
[deg] Pointing Dec	23.391340	23.3639880701276	Alternating exposures requested	N	N
[deg] Pointing Roll	236.002432	236.211891949944	[s] Primary exposure time	0.000000	3.1
[mm] SIM focus pos	-0.782348	-0.7809083437167272			
[mm] SIM defocus	0	0.001439871863259334			
[mm] SIM translation stage pos	-225.840463	-225.8433433320239			
[mm] SIM translation stage offset	-7.752	-7.749109670905796			
[s] Observation start time (MET)	106393819.184000	106392838.41565			
Observation start date	2001-05-16T09:49:15	2001-05-16T09:33:58			
[s] Observation end time (MET)	106403819.184000	106404410.6661			
Observation end date	2001-05-16T12:35:55	2001-05-16T12:46:50			
Read mode	TIMED	TIMED			

2.3 Aspect



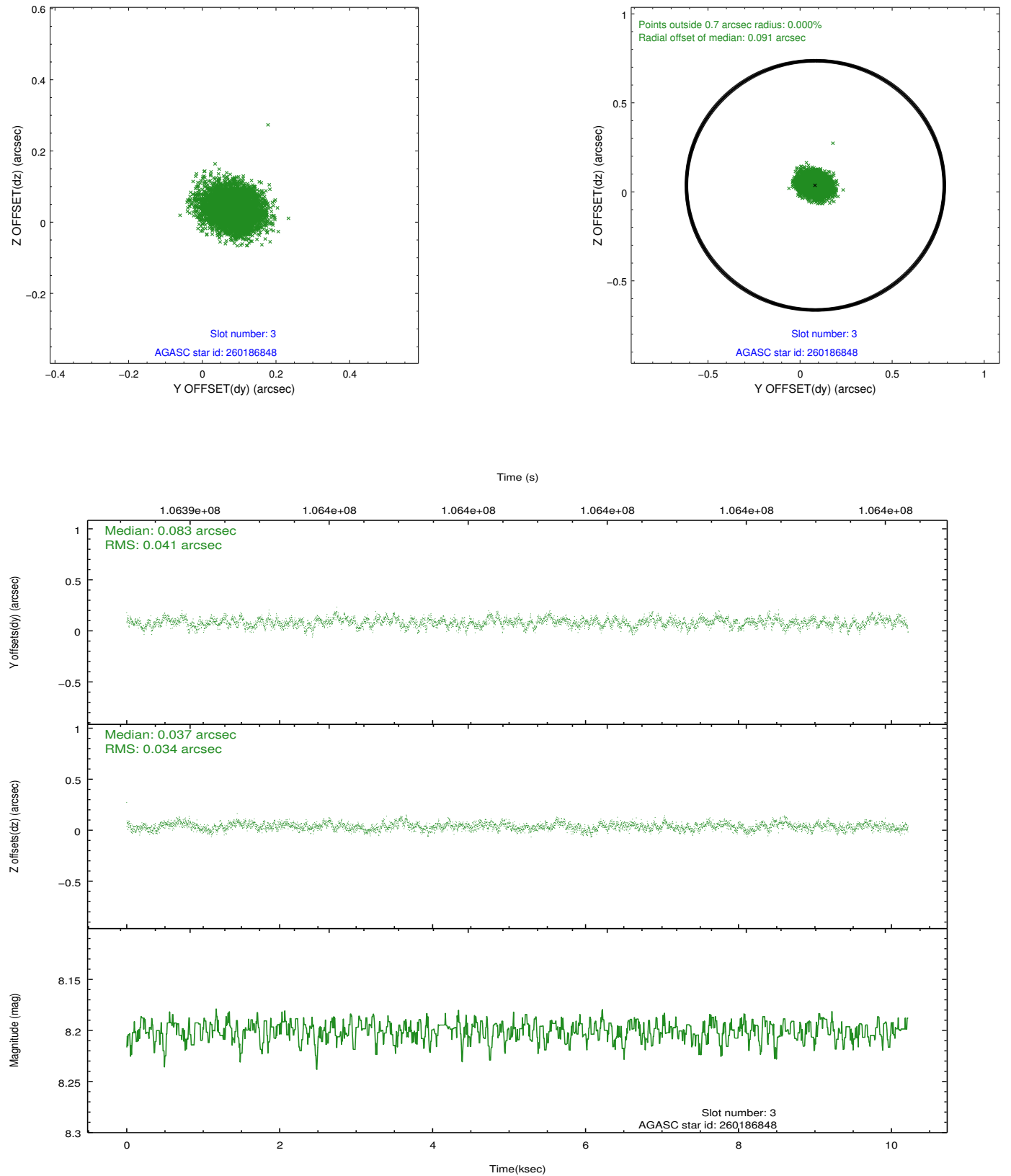


Slot Statistics

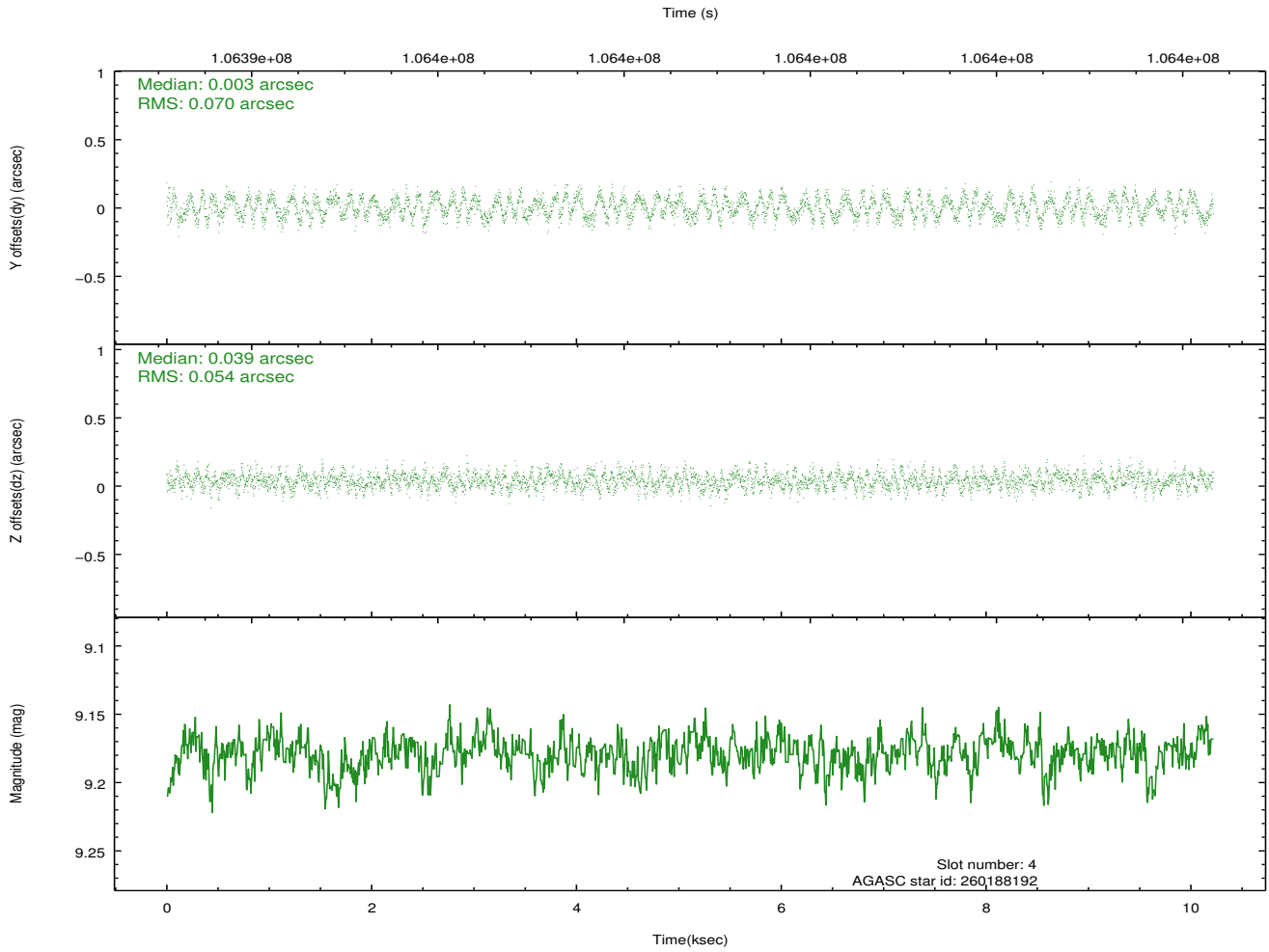
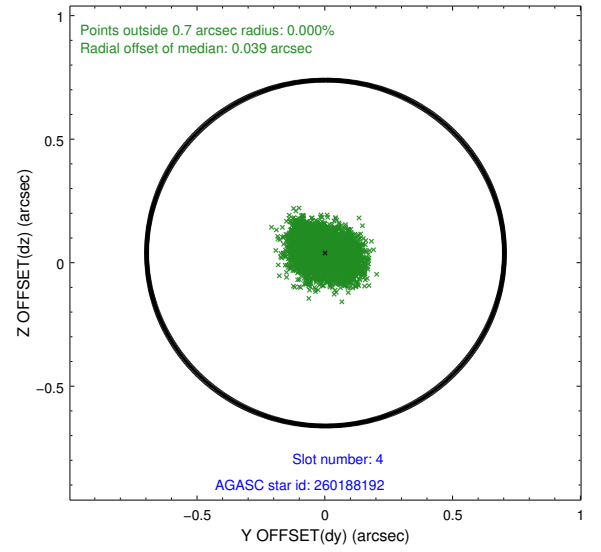
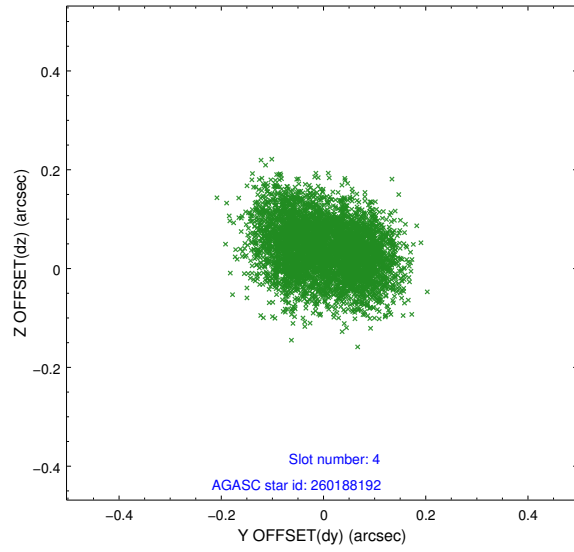
slot	status	id	mag	n_pts	med_dy	med_dz	dr1	dr2	ra	dec	mean_y	mean_z
0	FID	ACIS-I-2	7.17	2493	-0.048	-0.033	0.009	0.014	0.000000	0.000000	-756.83	-994.21
1	FID	ACIS-I-4	7.15	2493	-0.044	0.044	0.006	0.010	0.000000	0.000000	2156.96	911.67
2	FID	ACIS-I-5	7.22	2493	-0.009	0.058	0.009	0.014	0.000000	0.000000	-1809.55	909.14
3	GUIDE	260186848	8.20	4985	0.083	0.037	0.056	0.090	178.929956	22.642824	1980.06	1884.19
4	GUIDE	260188192	9.18	4972	0.003	0.039	0.096	0.147	179.330149	22.976535	240.72	2309.63
5	GUIDE	260182304	9.23	4986	-0.146	-0.146	0.069	0.112	178.643100	23.810976	-975.98	-1253.75
6	GUIDE	260188952	9.57	4986	0.160	0.027	0.090	0.147	178.359974	22.948174	2124.32	-299.40
7	GUIDE	260186296	9.58	4983	-0.098	0.046	0.100	0.161	179.246996	23.604894	-1475.79	810.30

2.4 Star Slots

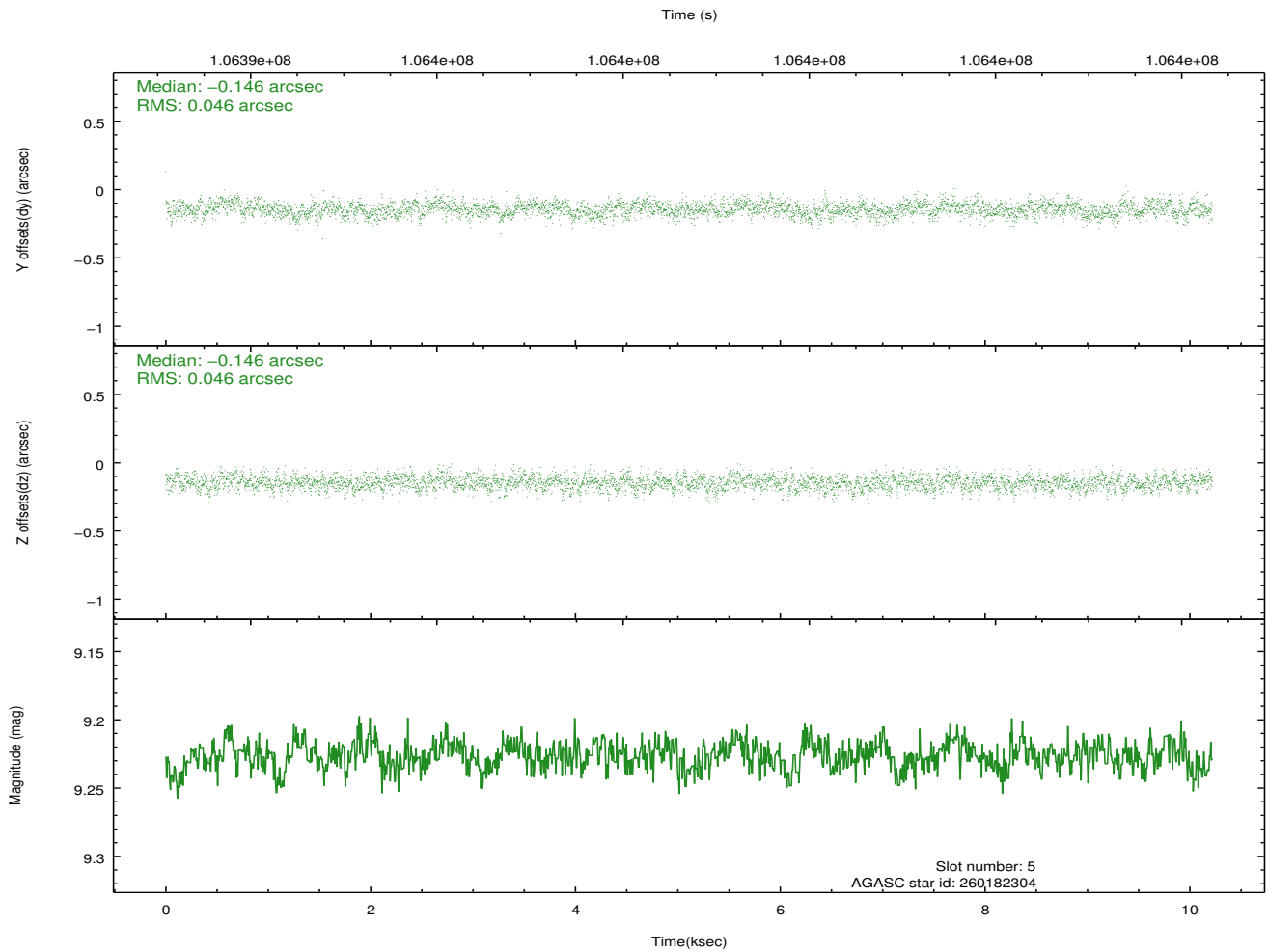
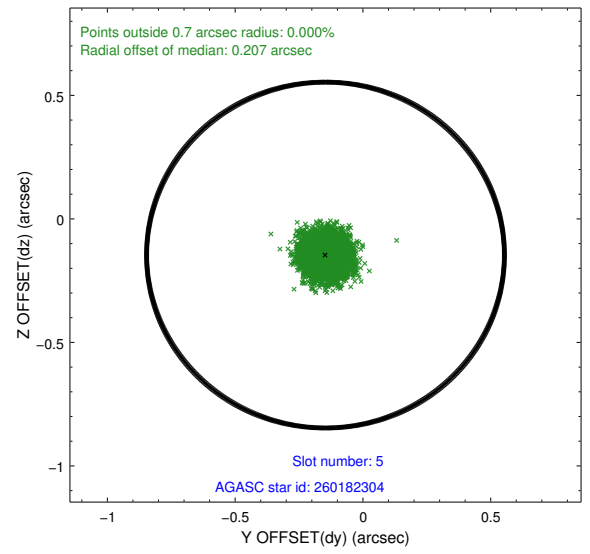
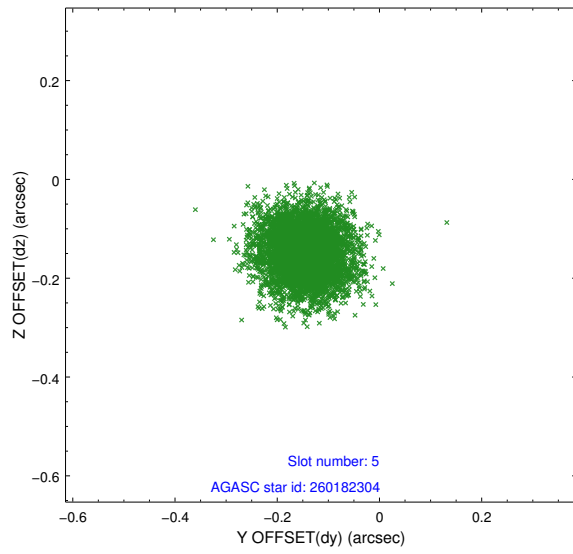
2.4.1 Slot 3



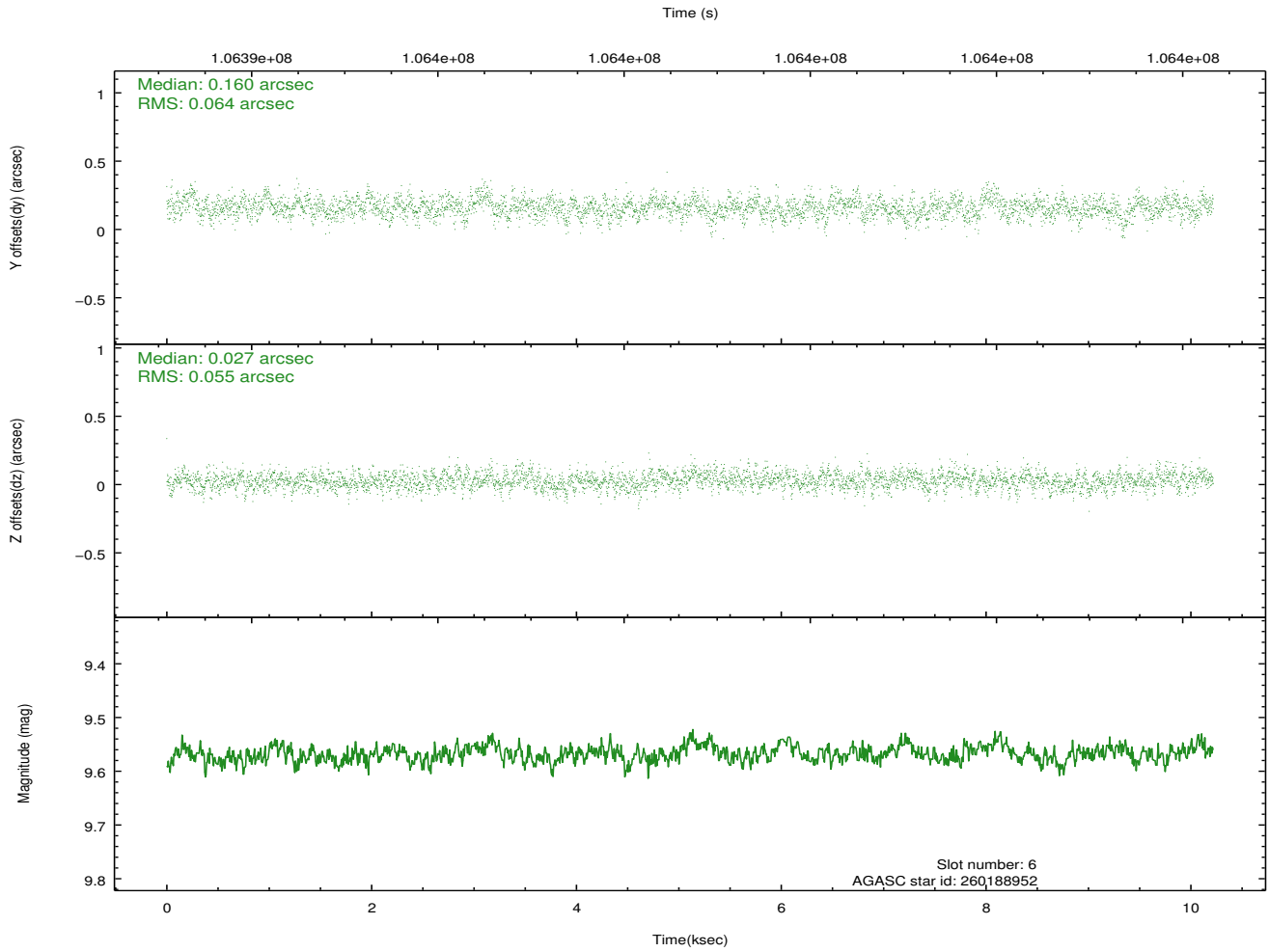
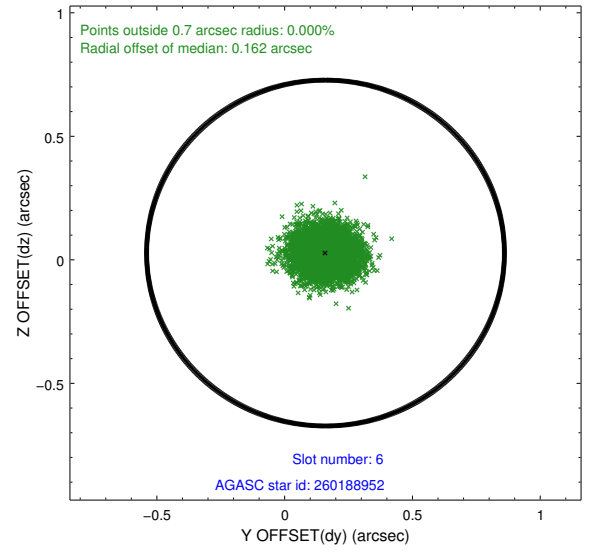
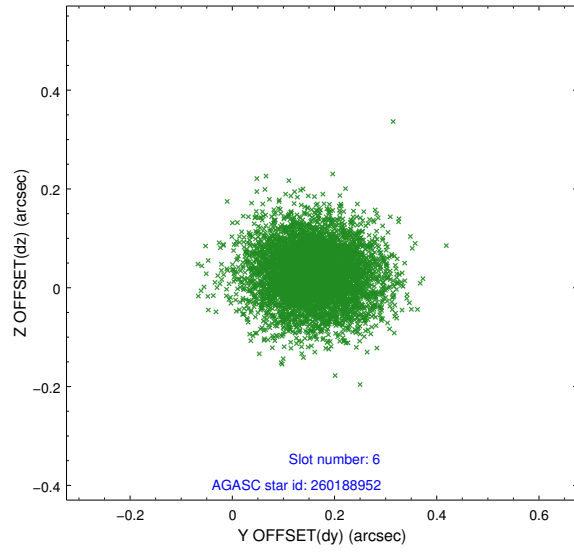
2.4.2 Slot 4



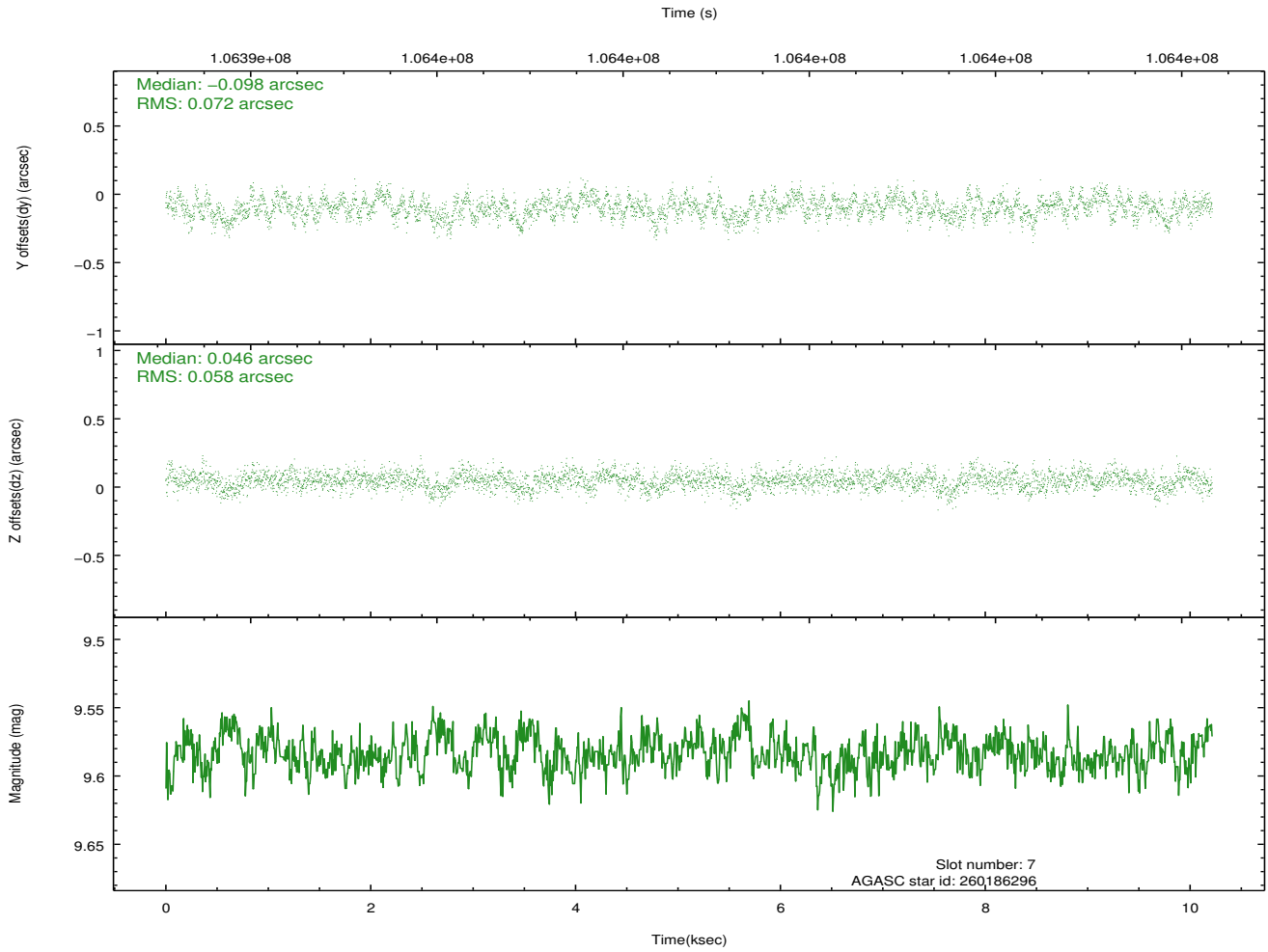
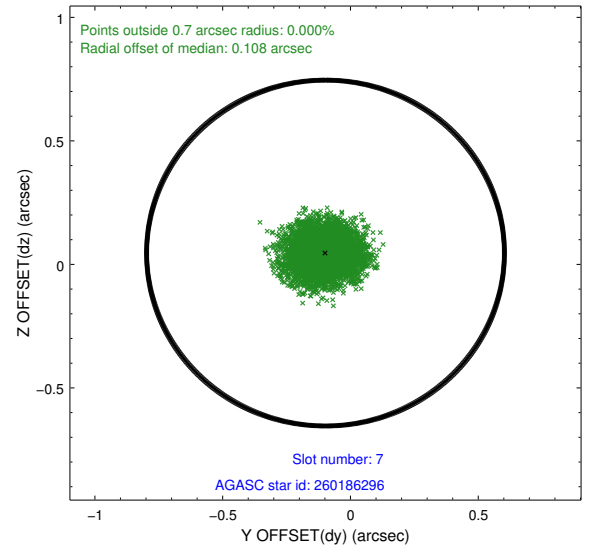
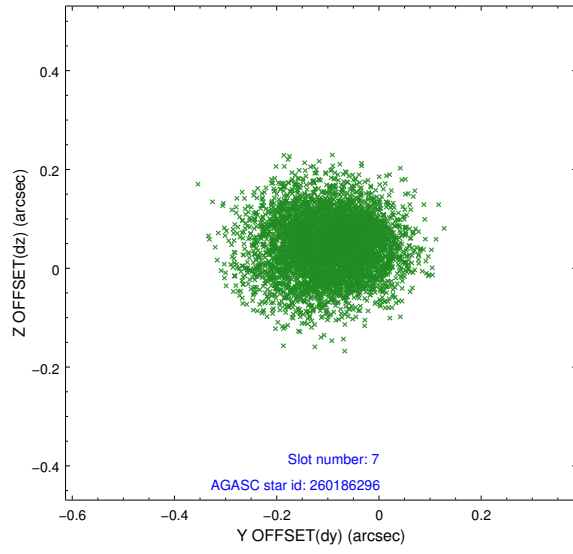
2.4.3 Slot 5



2.4.4 Slot 6

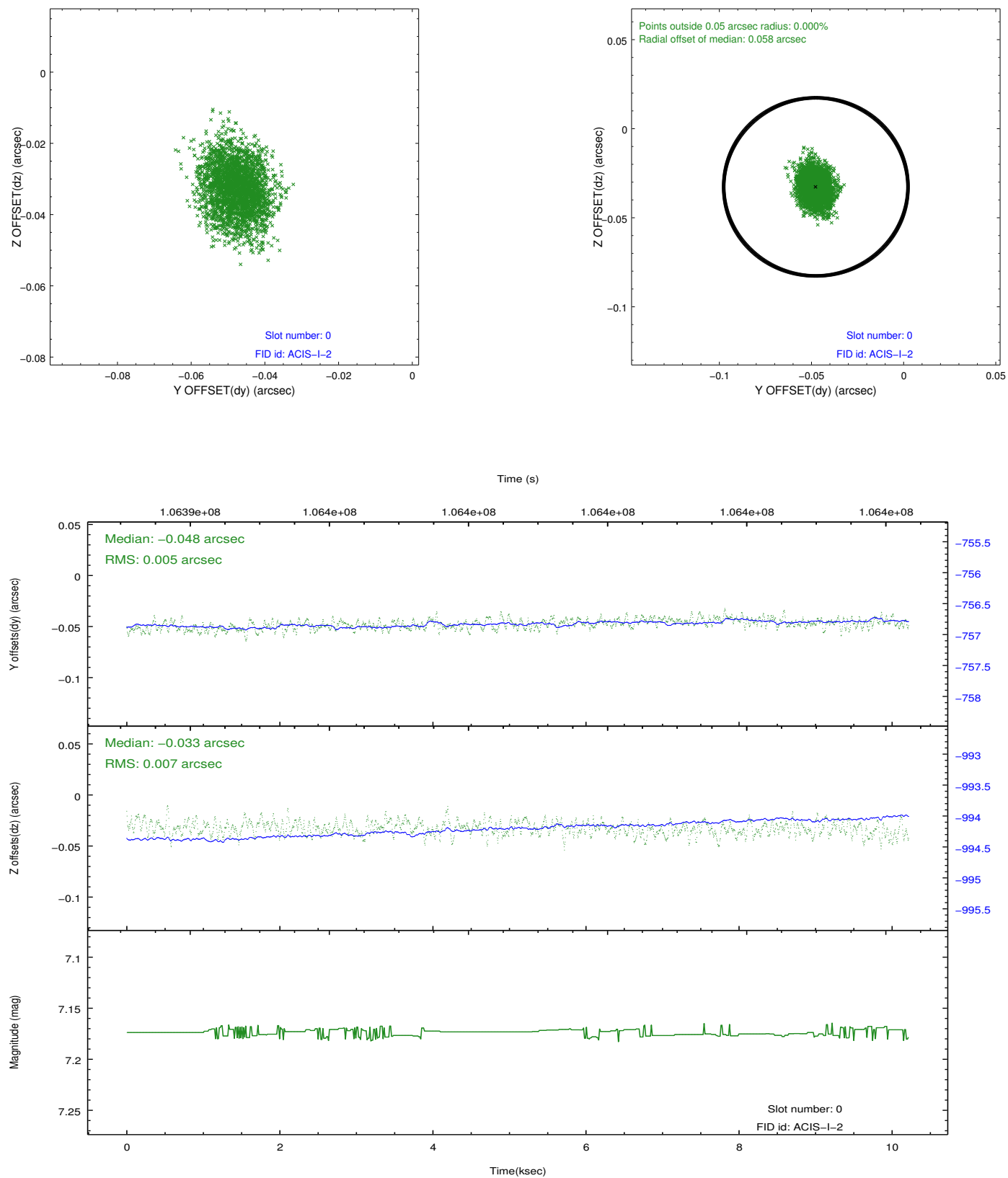


2.4.5 Slot 7

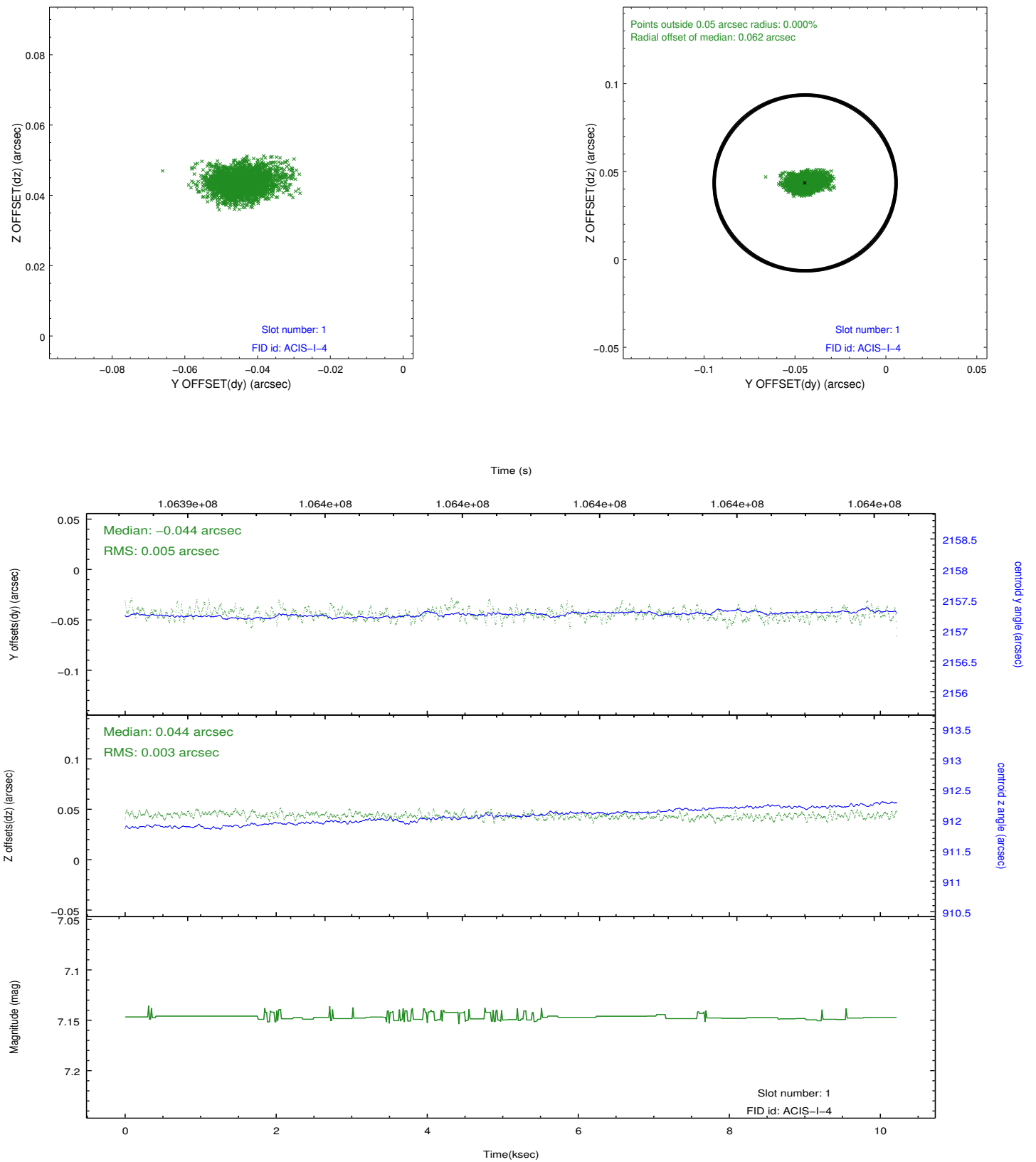


2.5 FID Slots

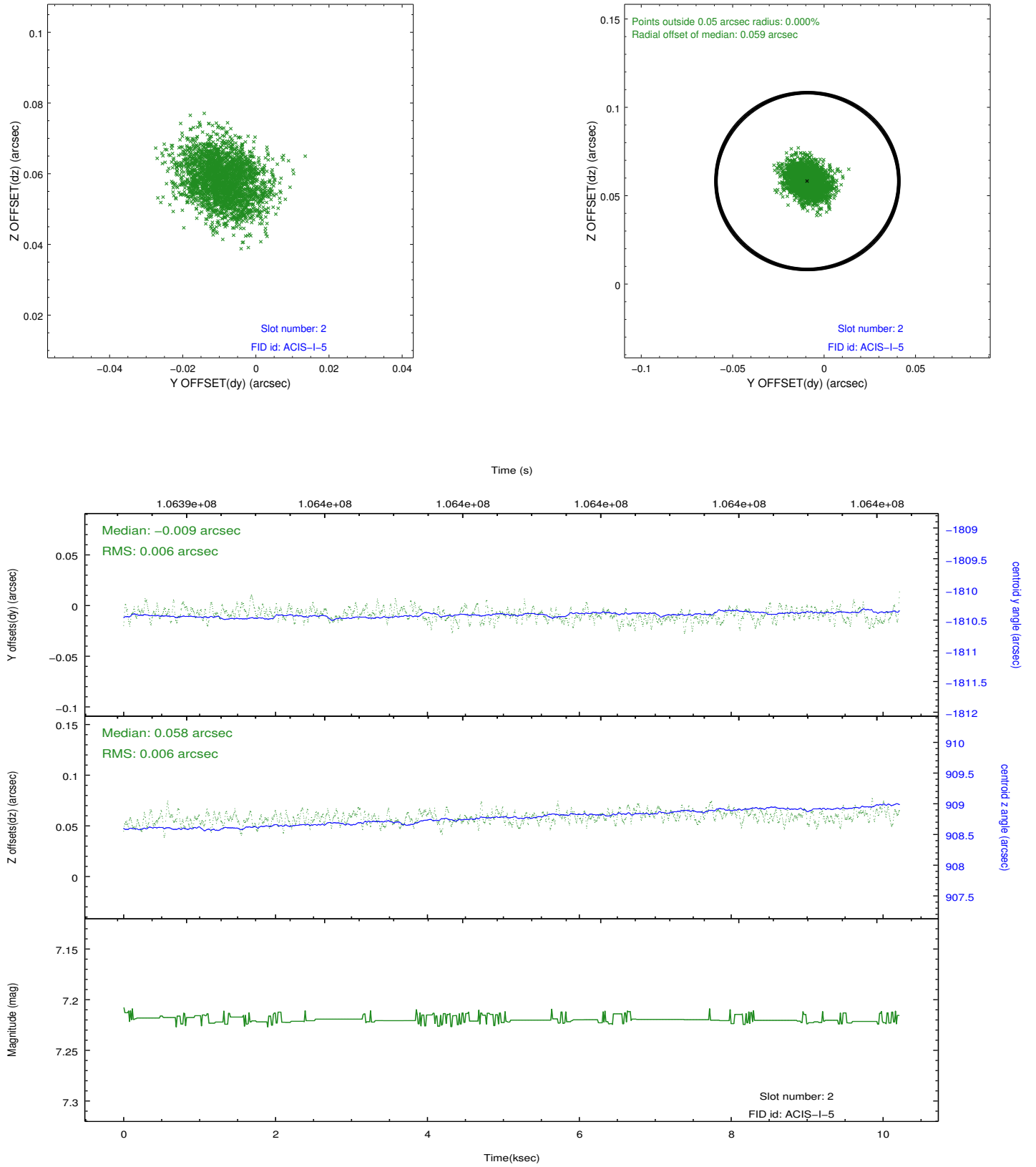
2.5.1 Slot 0



2.5.2 Slot 1



2.5.3 Slot 2



A Summary

A.1 Status

V&V Scientist	Beth Sundheim
V&V Date (YYYY-MM-DD)	2012.09.21
V&V Edition	1
V&V Disposition and Status	OK
V&V Charge Time	9.87

A.2 Comments