

V&V Reference Report

L2 ASCDS Version : 10.2.4

Observation 16201 - L2 Version 1
Chandra X-Ray Center

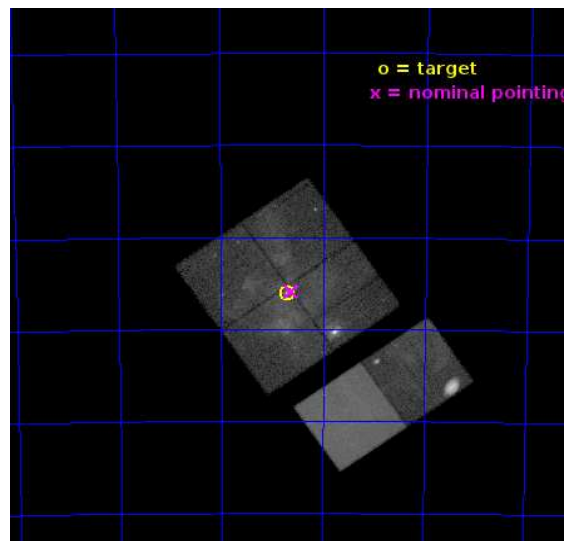
L2 Processing Date : Jul 22 2014

Contents

1	Front	2
2	OBI	3
2.1	OBI	3
2.1.1	Images	3
2.1.2	Bias	3
2.1.3	Parameters	4
2.1.4	Events	4
2.2	Compared Parameters	5
2.3	Aspect	6
2.4	Star Slots	9
2.4.1	Slot 3	9
2.4.2	Slot 4	10
2.4.3	Slot 5	11
2.4.4	Slot 6	12
2.4.5	Slot 7	13
2.5	FID Slots	14
2.5.1	Slot 0	14
2.5.2	Slot 1	15
2.5.3	Slot 2	16
A	Summary	17
A.1	Status	17
A.2	Comments	17

1 Front

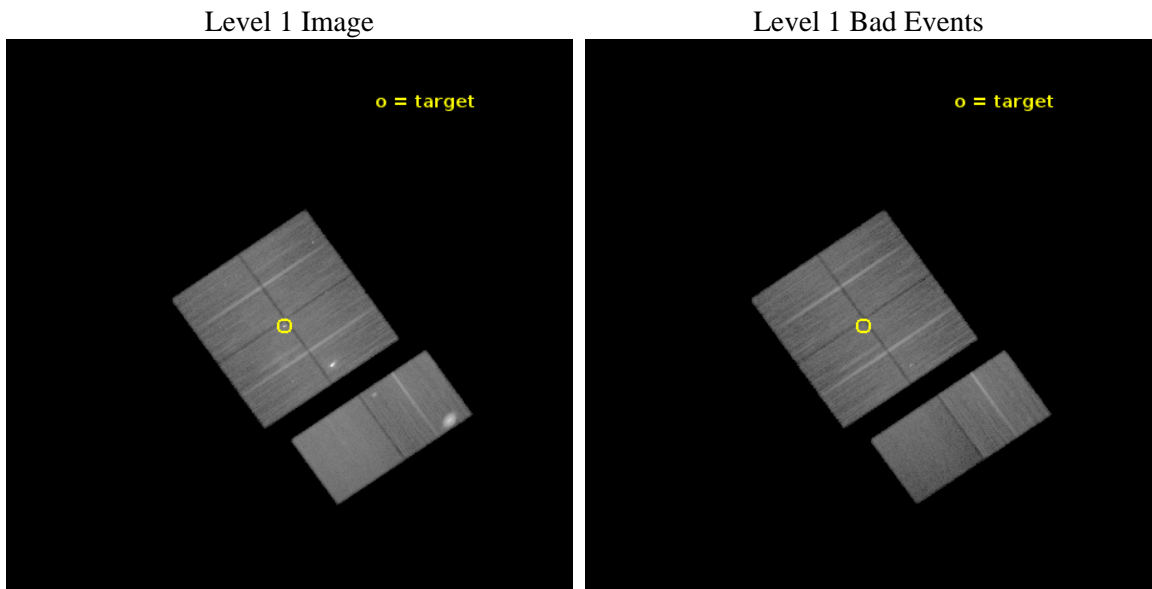
seq_num	901116	Sequence number
obs_id	16201	Observation id
title	The Tarantula -- Revealed by X-rays (T-ReX): A Definitive Chandra Investigation of 30 Doradus	Proposal title
observer	Dr. Leisa Townsley	Principal investigator
object	30 Doradus	Source name
dtcycle	0	
cycle	P	events from which exps? Prim/Second/Both
ra_targ	84.676667	Observer's specified target RA [deg]
dec_targ	-69.100806	Observer's specified target Dec [deg]
ra_nom	84.654758920582	Nominal RA [deg]
dec_nom	-69.098354459493	Nominal Dec [deg]
roll_nom	145.18822880315	Nominal Roll [deg]
revision	1	Processing version of data
ontime	59139.158789515	Sum of GTIs [s]
livetime	58390.303151596	Livetime [s]
ontime0	59139.158829272	Sum of GTIs [s]
ontime1	59142.399779737	Sum of GTIs [s]
ontime2	59139.158759594	Sum of GTIs [s]
ontime3	59139.158789515	Sum of GTIs [s]
ontime6	59142.399779737	Sum of GTIs [s]
ontime7	59142.399779737	Sum of GTIs [s]
l2events	441920	Number of level 2 events



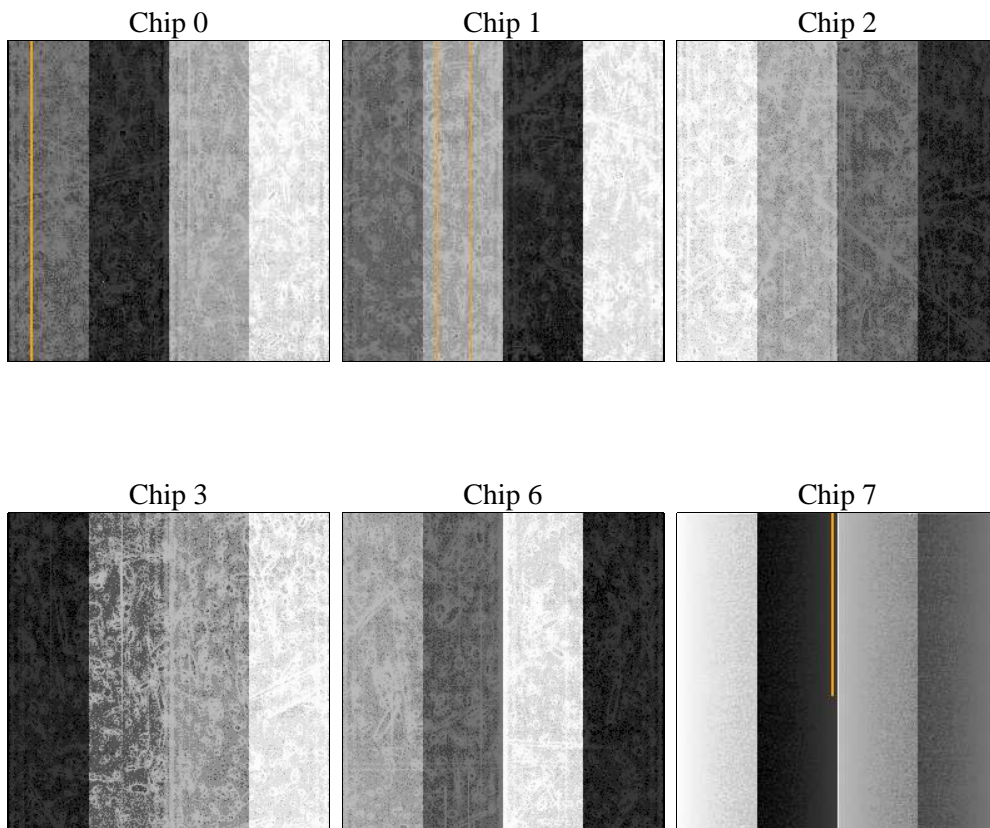
2 OBI

2.1 OBI

2.1.1 Images



2.1.2 Bias



2.1.3 Parameters

obi_num	0	Obi number	sched_exp_time	59174.000000	[s] Scheduled observation exposure time
ascdsver	10.2.4	Processing system revision	ontime	59139.158789515	Sum of GTIs [s]
caldsver	4.6.2	 	ontime0	59139.158829272	Sum of GTIs [s]
date	2014-07-22T23:43:34	Date and time of file creation	ontime1	59142.399779737	Sum of GTIs [s]
revision	1	Processing version of data	ontime2	59139.158759594	Sum of GTIs [s]
			ontime3	59139.158789515	Sum of GTIs [s]
			ontime6	59142.399779737	Sum of GTIs [s]
			ontime7	59142.399779737	Sum of GTIs [s]
			l1events	1737925	Number of level 1 events

2.1.4 Events

	ccd 0	ccd 1	ccd 2	ccd 3	ccd 6	ccd 7		ccd 0	ccd 1	ccd 2	ccd 3	ccd 6	ccd 7
level 1 events	247663	251128	306769	278532	328408	325425	grade 0 events	22110	20836	53217	33254	62690	18643
rejected events	203879	207953	225744	223134	234661	164454		8%	8%	17%	11%	19%	5%
rejected %	82%	82%	73%	80%	71%	50%	grade 1 events	210	156	458	294	297	440
								0%	0%	0%	0%	0%	0%
							grade 2 events	8848	8450	12319	8660	13140	35245
								3%	3%	4%	3%	4%	10%
							grade 3 events	3418	3529	4373	3632	4885	14649
								1%	1%	1%	1%	1%	4%
							grade 4 events	3187	3589	4489	3659	4879	14433
								1%	1%	1%	1%	1%	4%
							grade 5 events	10723	11517	10144	12175	12387	33592
								4%	4%	3%	4%	3%	10%
							grade 6 events	6223	6778	6633	6197	8165	78021
								2%	2%	2%	2%	2%	23%
							grade 7 events	192944	196273	215136	210661	221965	130402
								77%	78%	70%	75%	67%	40%

2.2 Compared Parameters

Parameter	Planned	Actual	Parameter	Planned	Actual
Instrument	ACIS	ACIS	Obspar format version number	7	7
Detector	ACIS-012367	ACIS-012367	Obspar file type	PREDICTED	ACTUAL
Grating	NONE	NONE	Obspar update status	NONE	UPDATED
Data mode	VFAINT	VFAINT	CCD I0 on	Y	Y
Observation mode	POINTING	POINTING	CCD I1 on	Y	Y
[deg] Pointing RA	84.731892	84.65475892058187	CCD I2 on	Y	Y
[deg] Pointing Dec	-69.100548	-69.09835445949331	CCD I3 on	Y	Y
[deg] Pointing Roll	145.051597	145.1882288031532	CCD S0 on	N	N
[mm] SIM focus pos	-0.782348	-0.7809083437167272	CCD S1 on	N	N
[mm] SIM defocus	0	0.001439871863259334	CCD S2 on	O1	Y
[mm] SIM translation stage pos	-233.592463	-233.5874344608287	CCD S3 on	O2	Y
[mm] SIM translation stage offset	0	-0.005018542100998502	CCD S4 on	N	N
[s] Observation start time (MET)	522369140.184000	522368025.39392	CCD S5 on	N	N
Observation start date	2014-07-21T22:31:13	2014-07-21T22:13:45	Number of optional ACIS chips dropped	0	0
[s] Observation end time (MET)	522428314.184000	522429478.75983	On-chip summing requested	N	N
Observation end date	2014-07-22T14:57:27	2014-07-22T15:17:58	Subarray requested	NONE	NONE
Read mode	TIMED	TIMED	Alternating exposures requested	N	N
			[s] Primary exposure time	0.000000	3.2

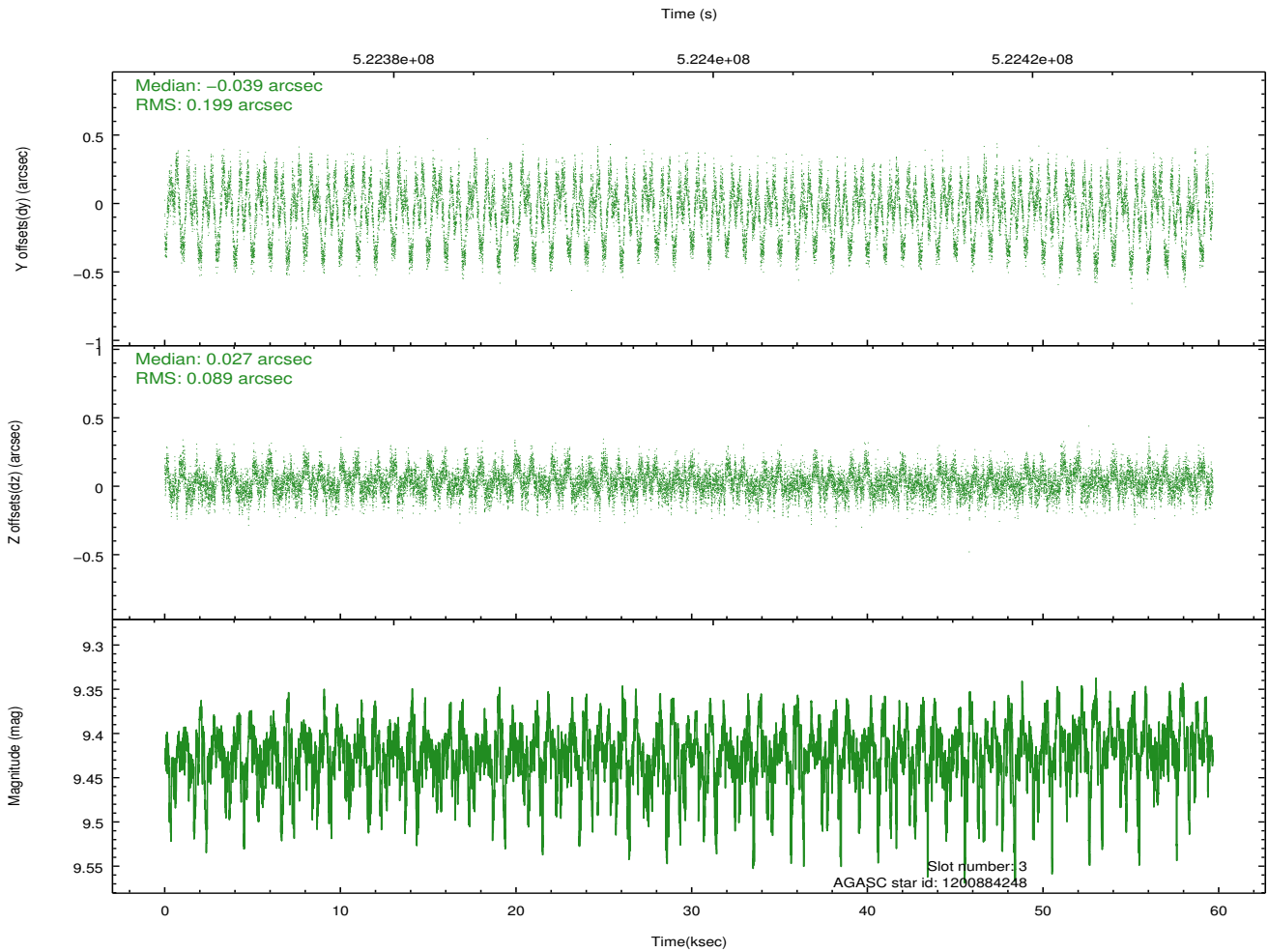
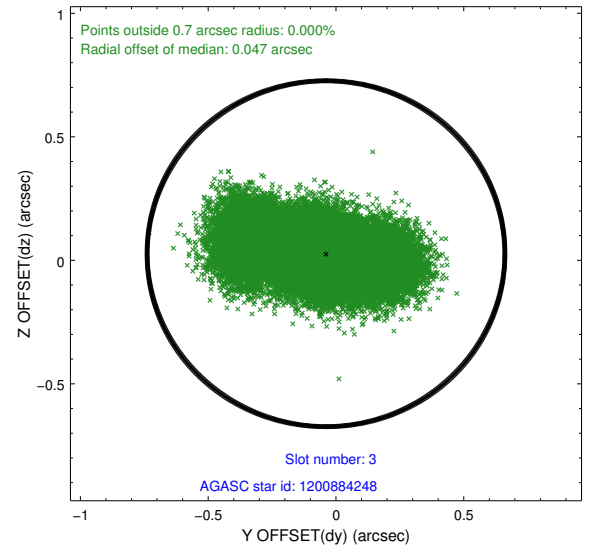
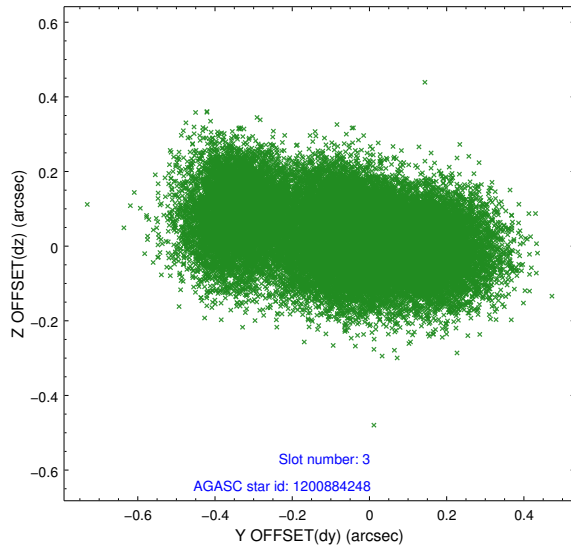
2.3 Aspect

Slot Statistics

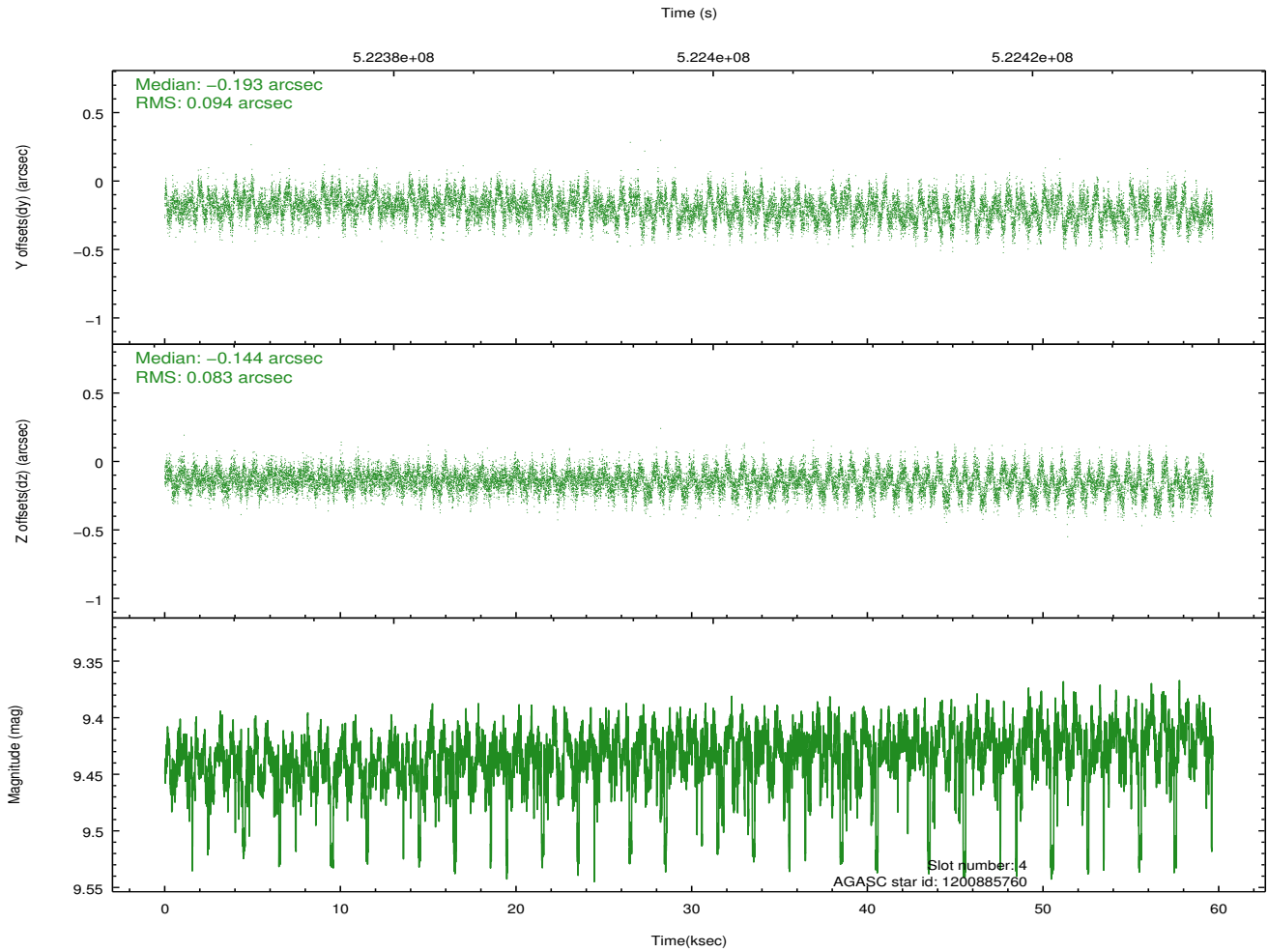
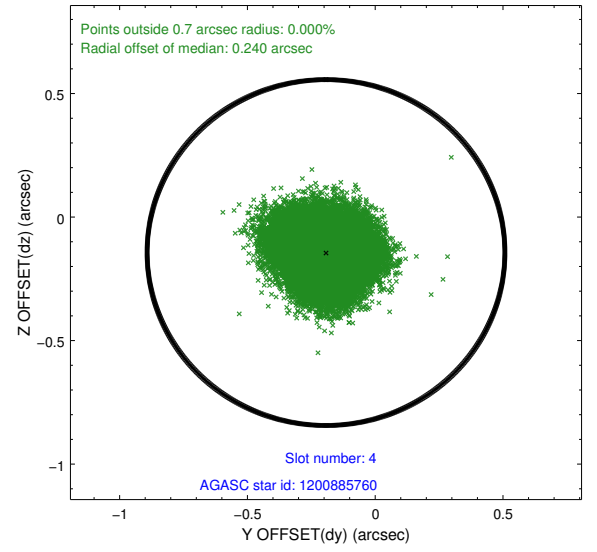
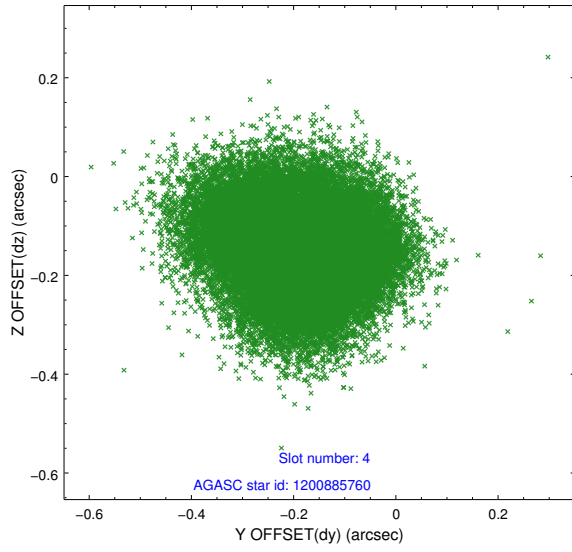
slot	status	id	mag	n_pts	med_dy	med_dz	dr1	dr2	ra	dec	mean_y	mean_z
0	FID	ACIS-I-2	6.97	14551	-0.095	-0.062	0.026	0.054	0.000000	0.000000	-775.08	-849.44
1	FID	ACIS-I-4	7.00	14551	0.259	0.073	0.041	0.057	0.000000	0.000000	2139.30	1056.97
2	FID	ACIS-I-5	7.05	14550	-0.255	0.053	0.022	0.037	0.000000	0.000000	-1829.16	1054.64
3	GUIDE	1200884248	9.42	28957	-0.039	0.027	0.239	0.383	83.880915	-68.565170	2017.61	-931.95
4	GUIDE	1200885760	9.43	29087	-0.193	-0.144	0.135	0.211	83.723637	-68.777667	1736.69	-190.76
5	GUIDE	1201018384	9.05	29082	0.072	0.239	0.124	0.196	85.801362	-68.593260	-112.13	-2291.79
6	GUIDE	1201020040	8.62	29093	0.016	0.098	0.158	0.229	85.379163	-68.879396	-234.05	-1129.66
7	GUIDE	1201540776	9.55	29092	0.152	-0.221	0.157	0.255	85.107945	-69.858480	-1945.85	1970.36

2.4 Star Slots

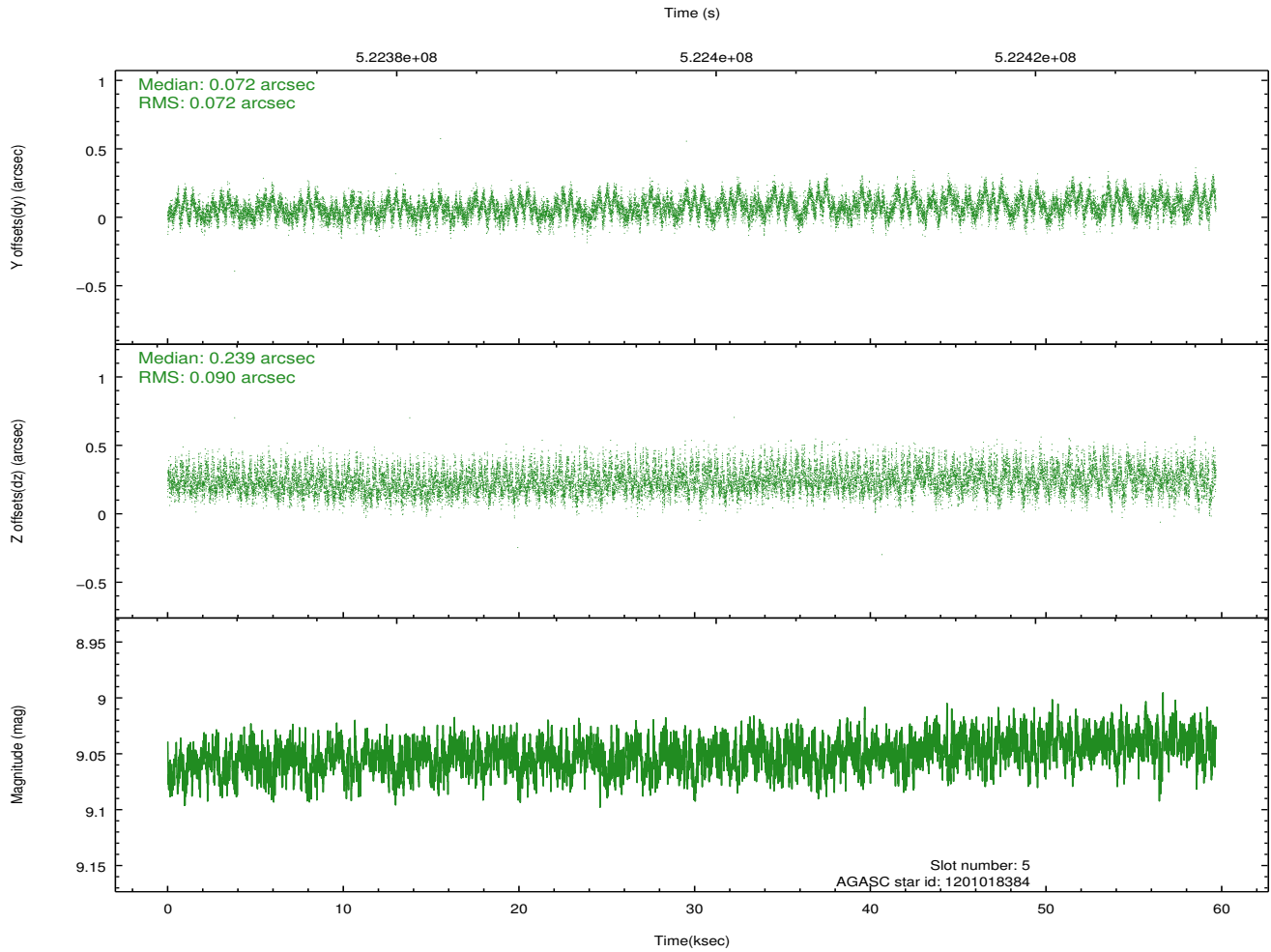
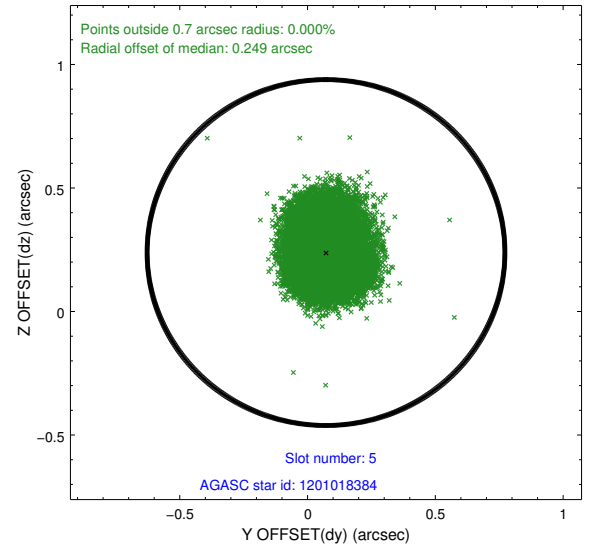
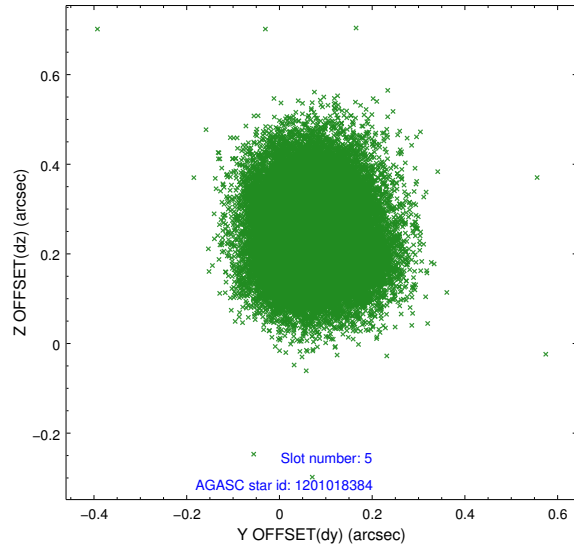
2.4.1 Slot 3



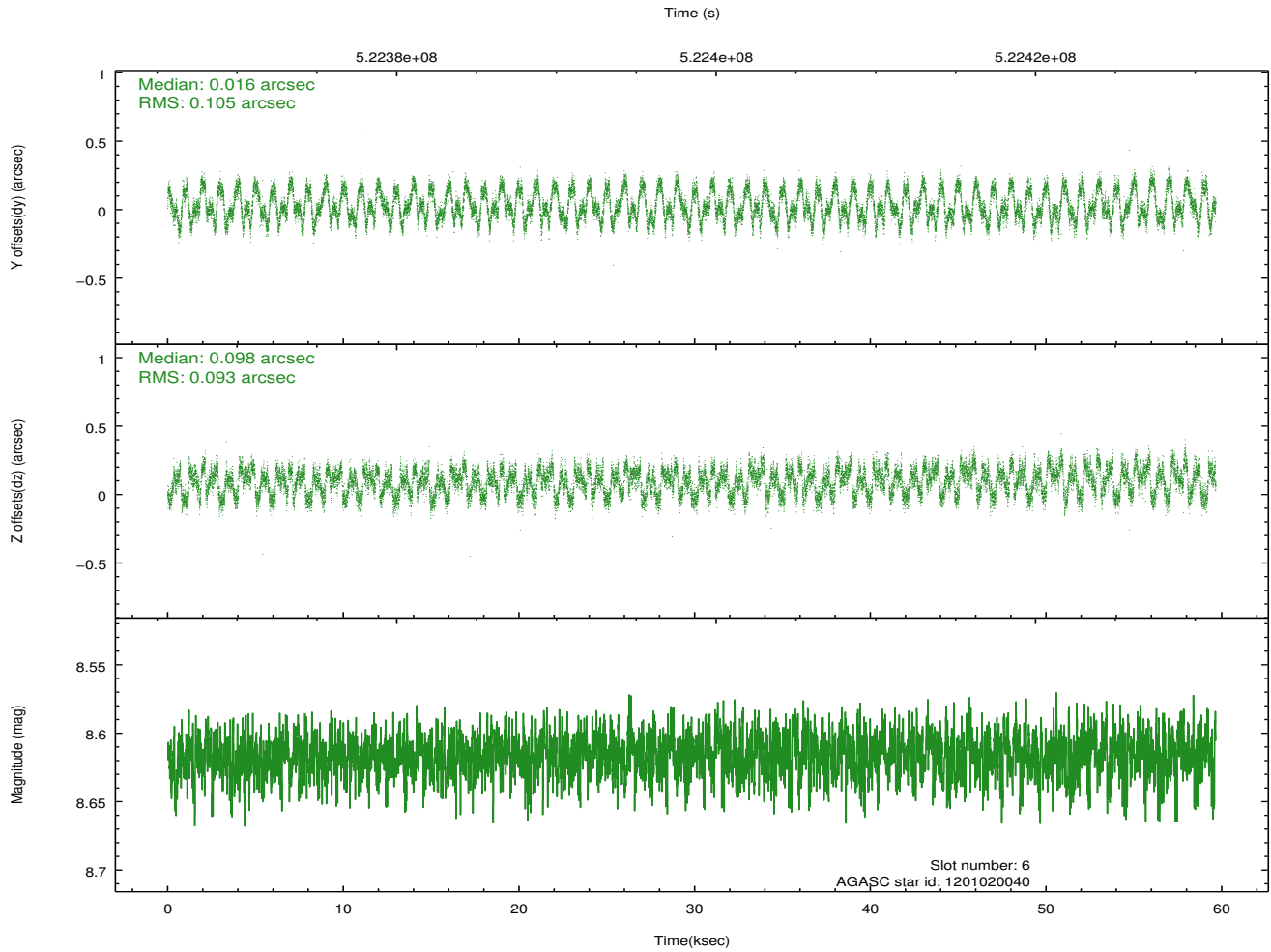
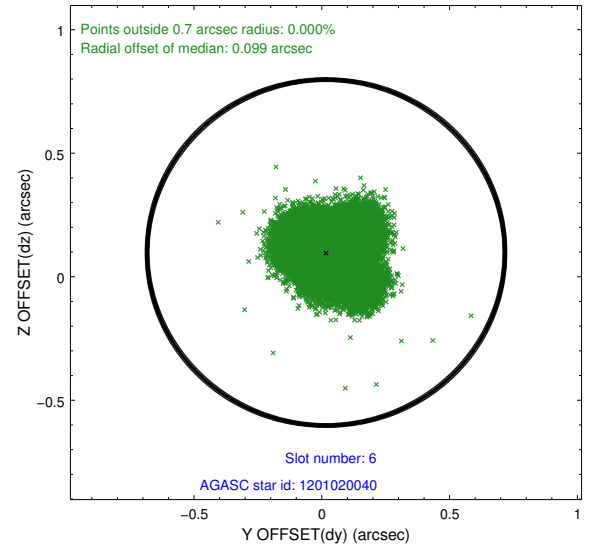
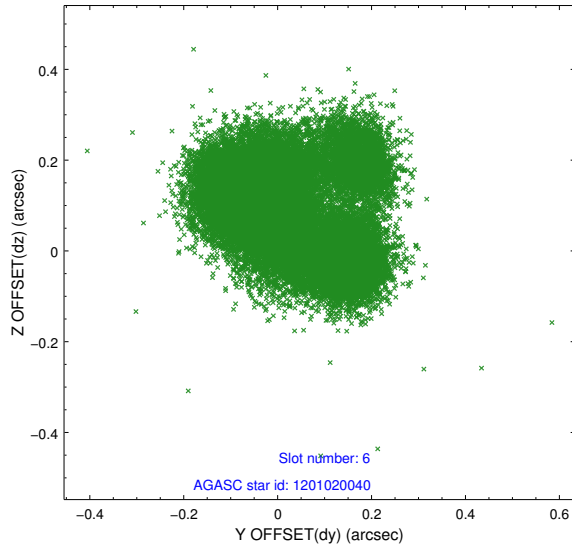
2.4.2 Slot 4



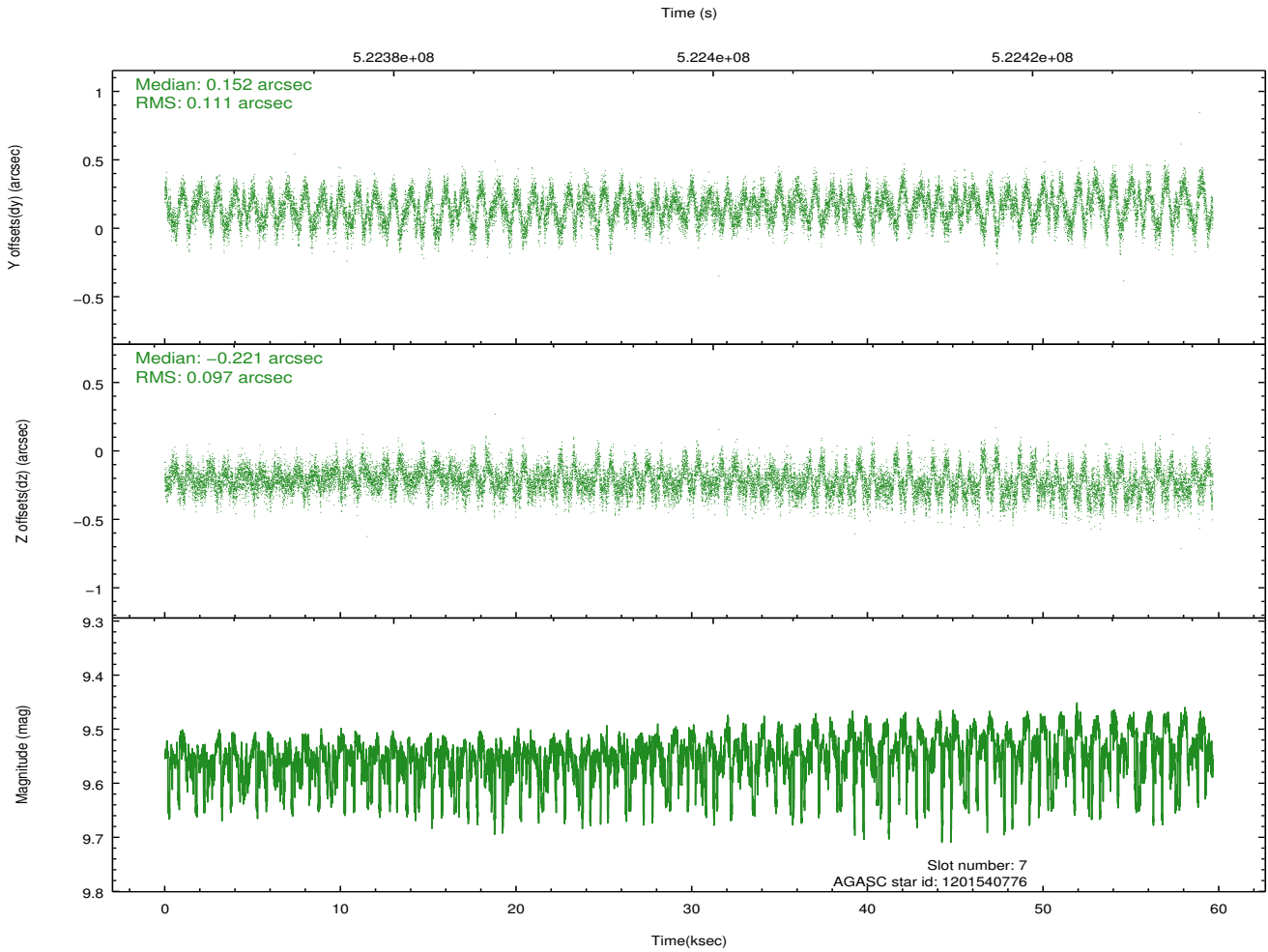
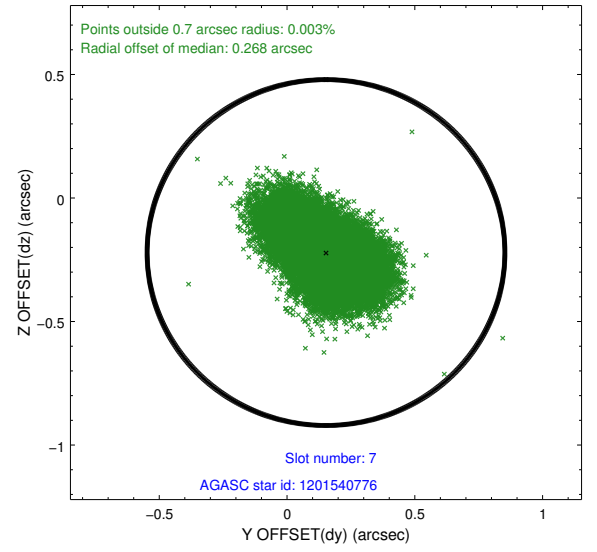
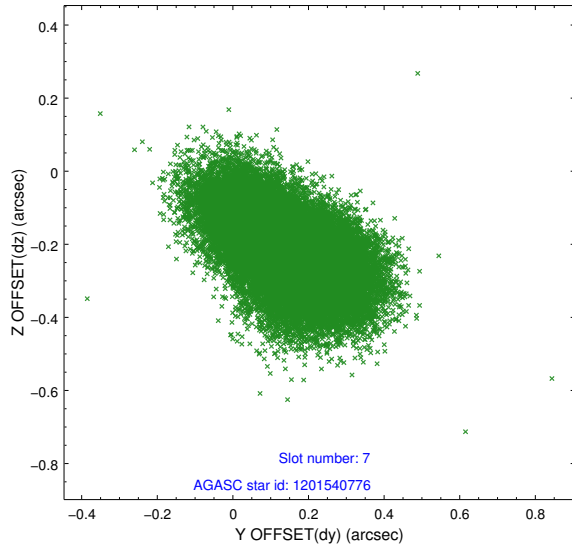
2.4.3 Slot 5



2.4.4 Slot 6

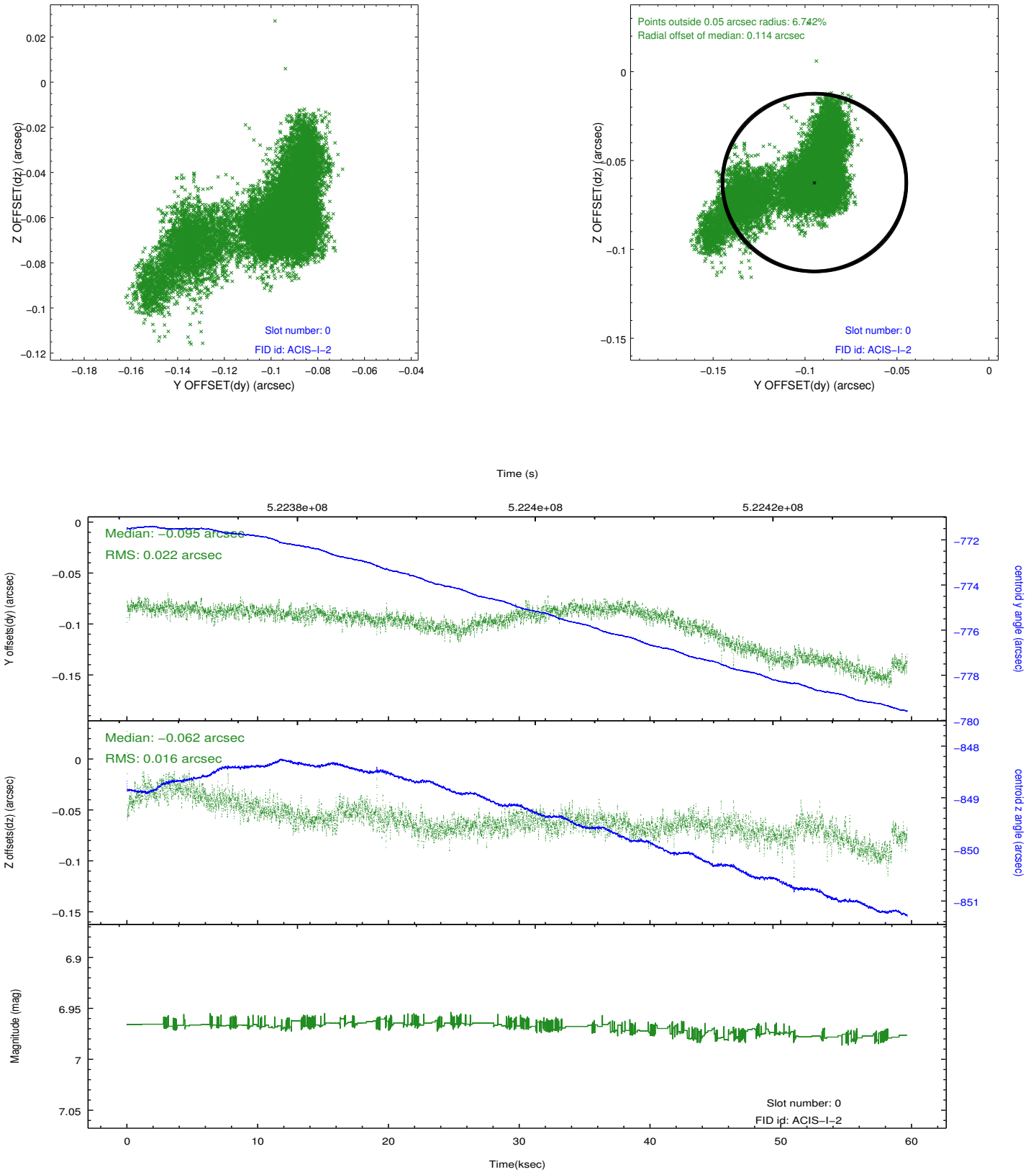


2.4.5 Slot 7

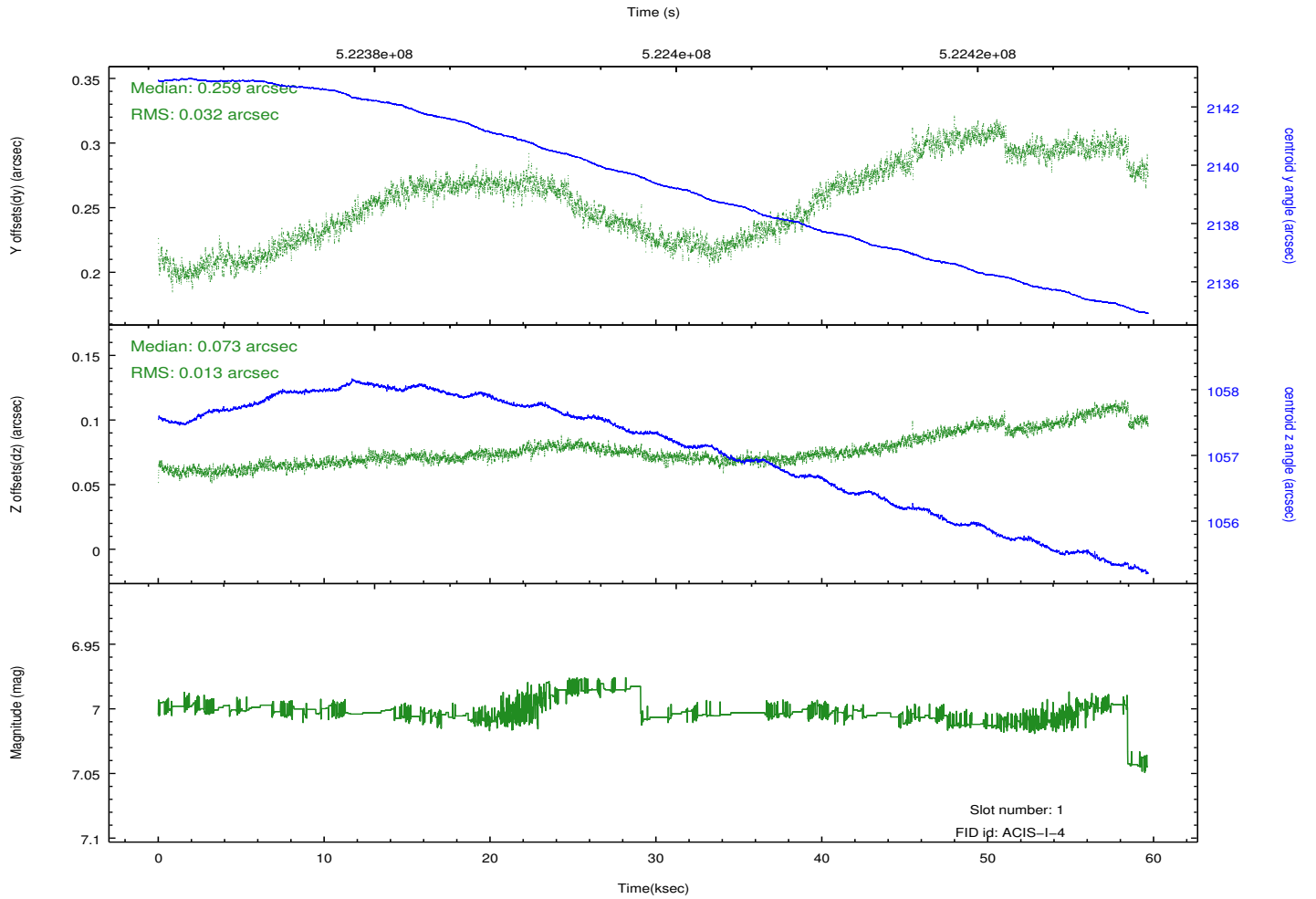
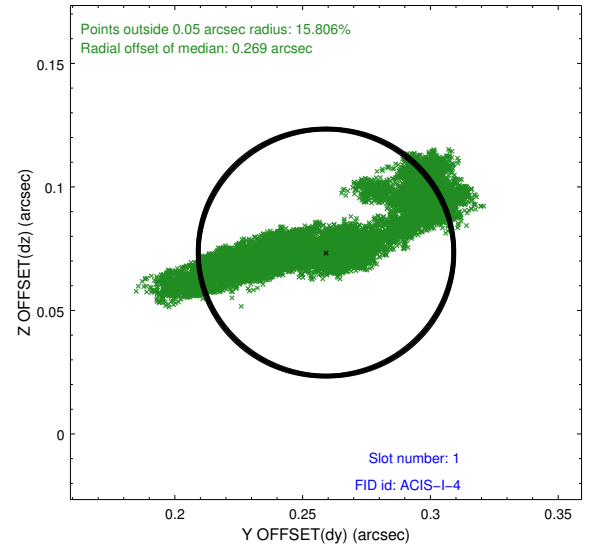
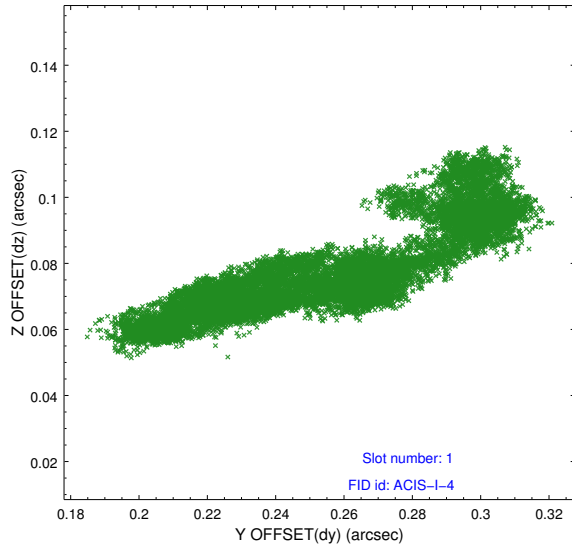


2.5 FID Slots

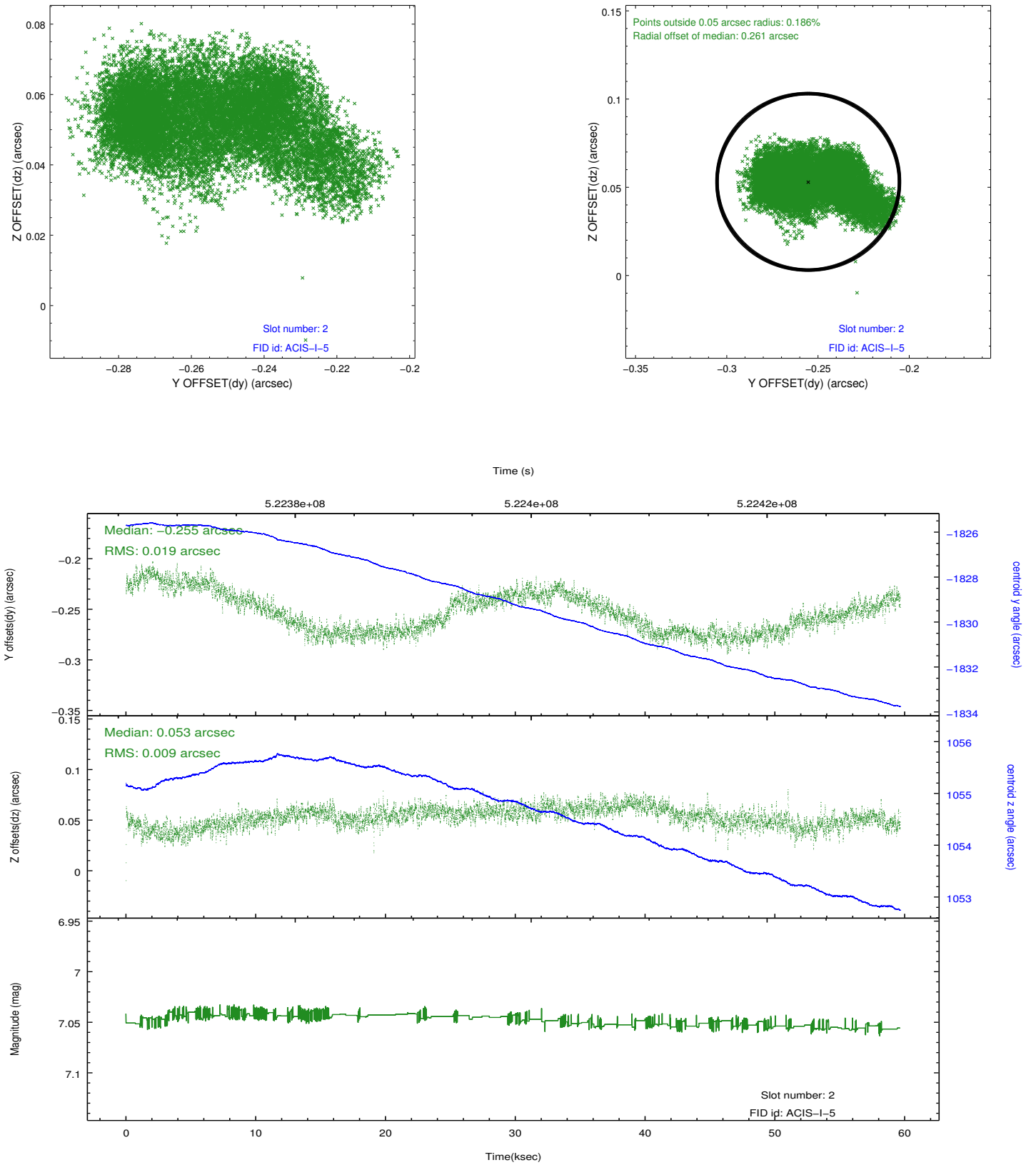
2.5.1 Slot 0



2.5.2 Slot 1



2.5.3 Slot 2



A Summary

A.1 Status

V&V Scientist	Beth Sundheim
V&V Date (YYYY-MM-DD)	2014.07.22
V&V Edition	1
V&V Disposition and Status	OK
V&V Charge Time	59.139158789515

A.2 Comments