

V&V Reference Report

L2 ASCDS Version : 7.6.9

Observation 1531 - L2 Version 001
Chandra X-Ray Center

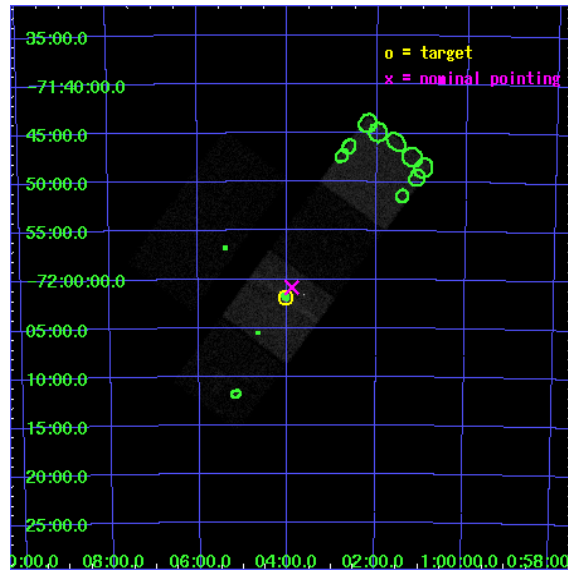
L2 Processing Date : Nov 25 2006

Contents

1	Front	2
2	OBI	3
2.1	OBI	3
2.1.1	Images	3
2.1.2	Bias	3
2.1.3	Parameters	4
2.1.4	Events	4
2.2	Compared Parameters	5
2.3	Aspect	6
2.4	Star Slots	9
2.4.1	Slot 3	9
2.4.2	Slot 4	10
2.4.3	Slot 5	11
2.4.4	Slot 6	12
2.4.5	Slot 7	13
2.5	FID Slots	14
2.5.1	Slot 0	14
2.5.2	Slot 1	15
2.5.3	Slot 2	16
3	Point Sources	17
A	Summary	18
A.1	Status	18
A.2	Comments	18

1 Front

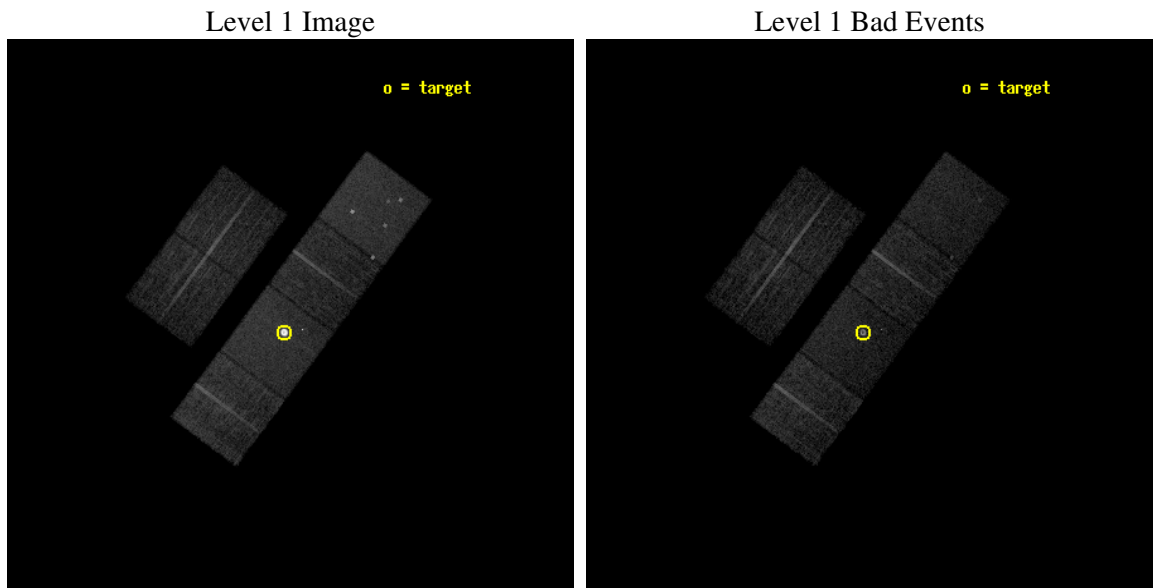
seq_num	590140
obs_id	1531
title	ACIS CALIBRATION OBSERVATION OF THE SUPERNOVA REMNANT E0102-72 (JUNE 2001)
observer	Dr. CXC Calibration
object	E0102-72.3 [Chip S3, T=120, Offsets=-1,0,0]
dtcycle	0
cycle	P
ra_targ	16.01
dec_targ	-72.032028
ra_nom	15.974344555459
dec_nom	-72.014332371605
roll_nom	126.59770287628
revision	2
ontime	7507.2000069916
livetime	7412.1393202099
ontime2	7507.2000069916
ontime3	7507.2000069916
ontime5	7507.2000069916
ontime6	7507.2000069916
ontime7	7507.2000069916
ontime8	7503.9590666741
l2events	135716



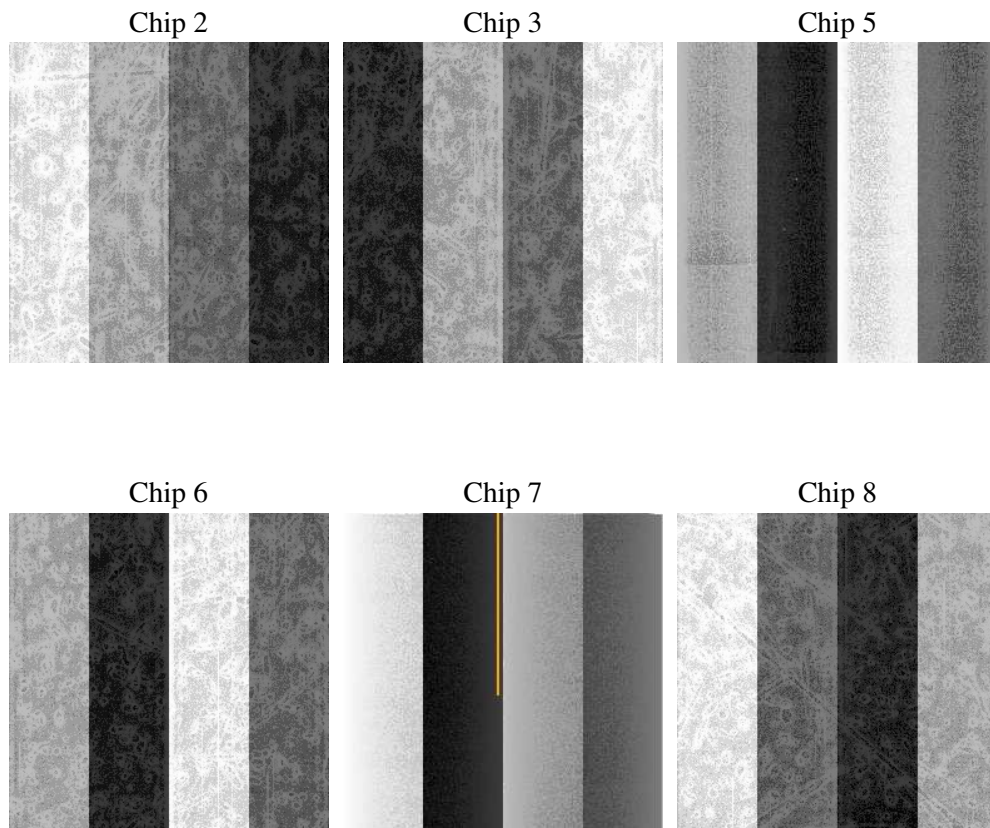
2 OBI

2.1 OBI

2.1.1 Images



2.1.2 Bias



2.1.3 Parameters

obi_num	0
ascdsver	7.6.9
caldbver	3.2.4
date	2006-11-25T08:22:45
revision	2

sched_exp_time	7755.000000
ontime	7512.6354723871
ontime2	7512.6354723871
ontime3	7512.6354723871
ontime5	7512.6354723871
ontime6	7512.6354723871
ontime7	7512.6354723871
ontime8	7512.6354225278
l1events	416189

2.1.4 Events

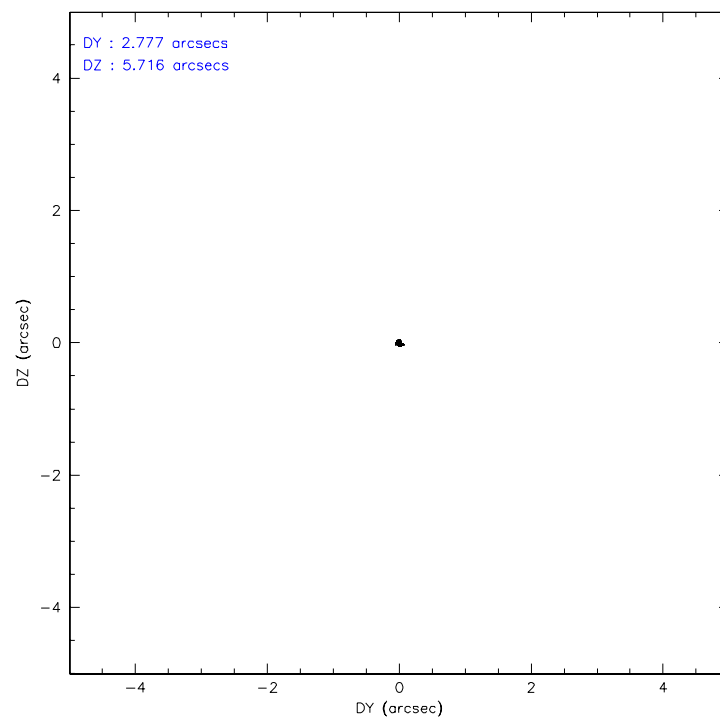
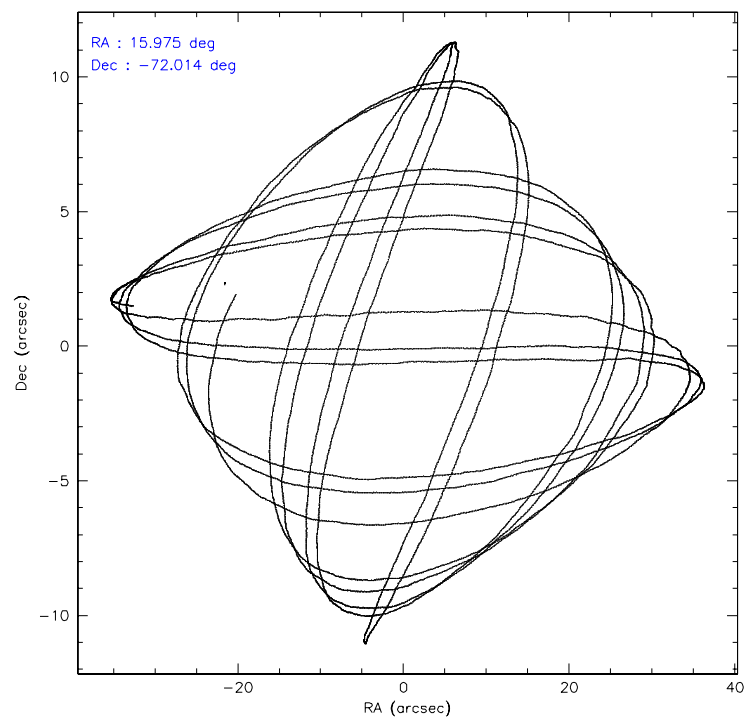
	ccd 2	ccd 3	ccd 5	ccd 6	ccd 7	ccd 8
level 1 events	50342	48227	71847	52039	127858	65876
rejected events	44669	42828	38817	46040	40864	52119
rejected %	88%	88%	54%	88%	31%	79%

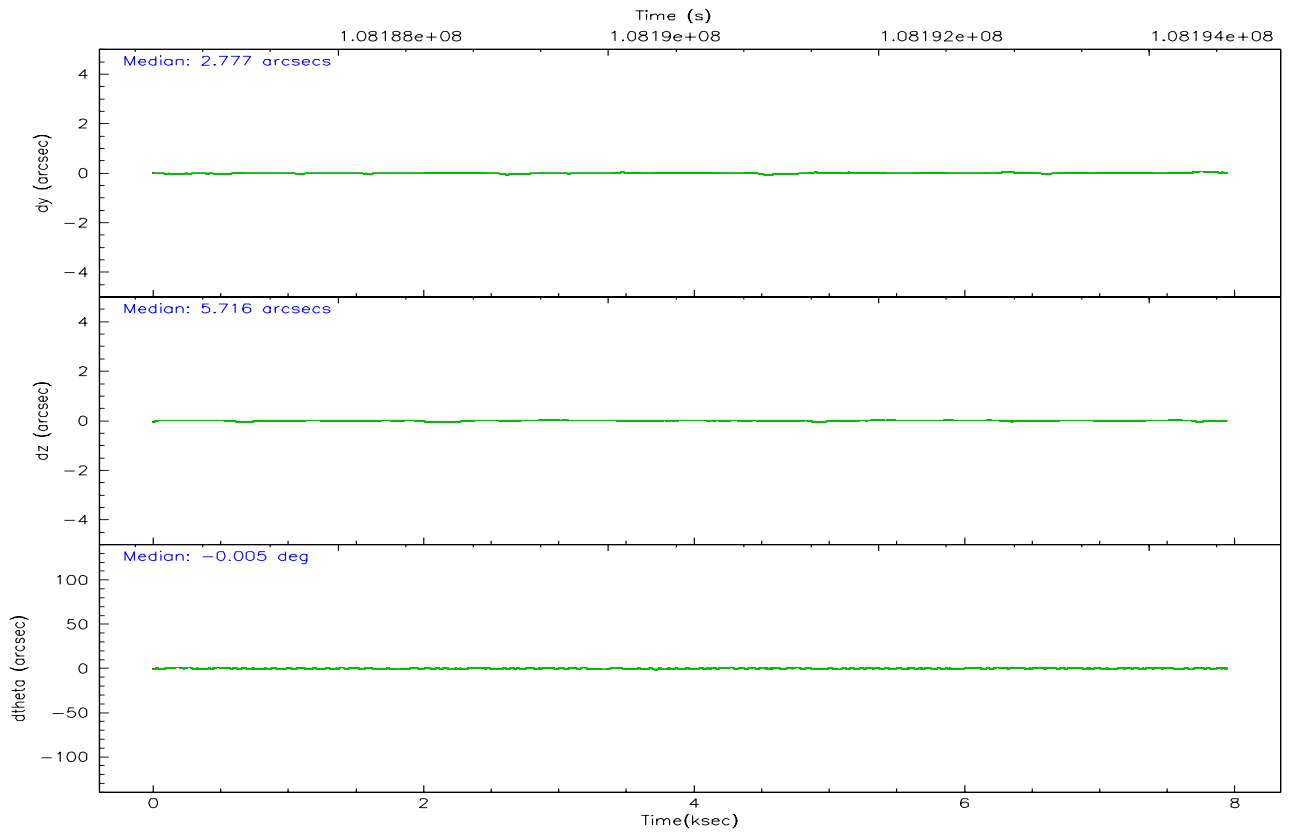
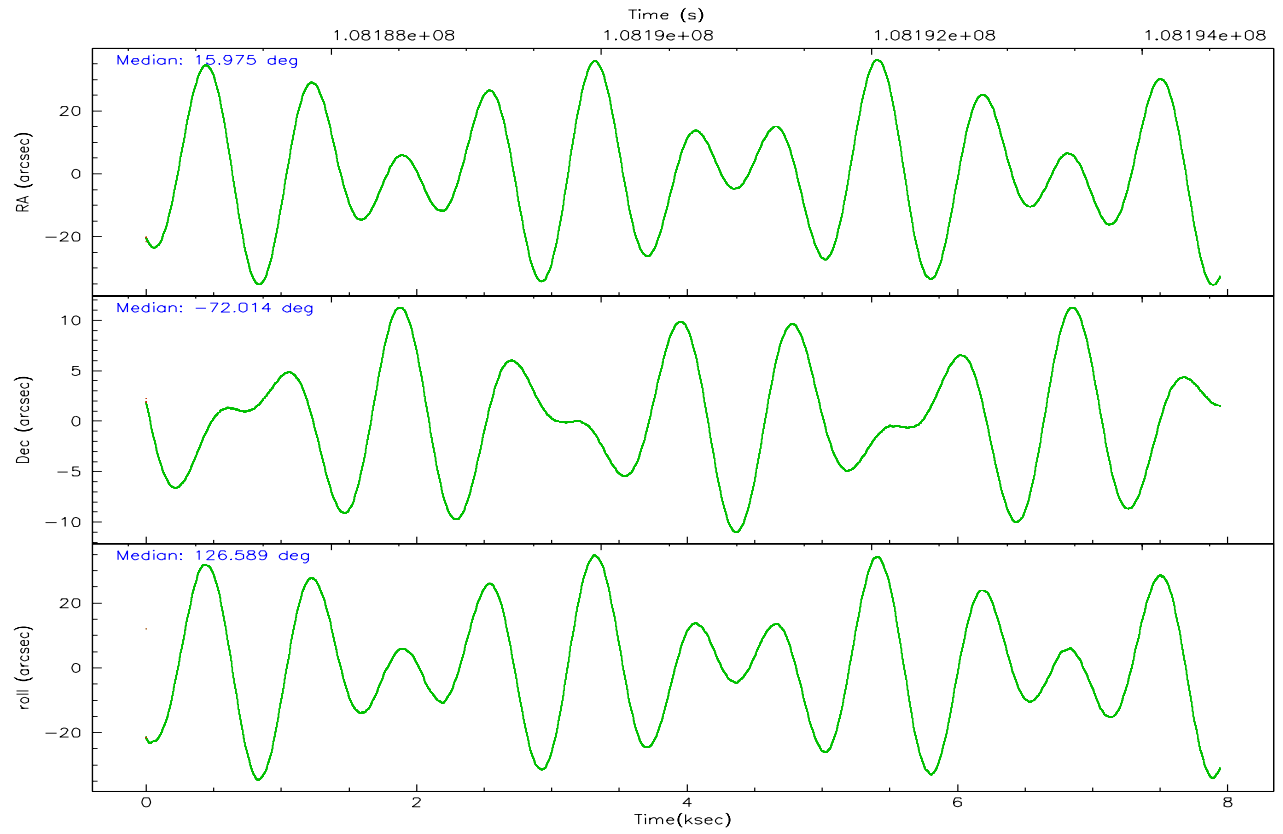
	ccd 2	ccd 3	ccd 5	ccd 6	ccd 7	ccd 8
grade 0 events	2385	2343	4550	2606	23631	4808
	4%	4%	6%	5%	18%	7%
grade 1 events	26	15	107	28	518	56
	0%	0%	0%	0%	0%	0%
grade 2 events	1204	1080	9640	1198	22892	2683
	2%	2%	13%	2%	17%	4%
grade 3 events	537	487	809	553	8797	1481
	1%	1%	1%	1%	6%	2%
grade 4 events	537	533	776	583	8395	1409
	1%	1%	1%	1%	6%	2%
grade 5 events	1651	1902	3451	2053	5455	2572
	3%	3%	4%	3%	4%	3%
grade 6 events	1014	956	17267	1060	23312	3400
	2%	1%	24%	2%	18%	5%
grade 7 events	42988	40911	35247	43958	34858	49467
	85%	84%	49%	84%	27%	75%

2.2 Compared Parameters

Parameter	Planned	Actual	Parameter	Planned	Actual
Instrument	ACIS	ACIS	Obspar format version number	6	6
Detector	ACIS-235678	ACIS-235678	Obspar file type	PREDICTED	ACTUAL
Grating	NONE	NONE	Obspar update status	NONE	UPDATED
Data mode	FAINT	FAINT	Number of optional ACIS chips dropped	0	0
Observation mode	POINTING	POINTING	On-chip summing requested	N	N
Pointing RA	16.055940	15.97434455545943	Subarray requested	NONE	NONE
Pointing Dec	-72.024859	-72.01433237160471	Alternating exposures requested	N	N
Pointing Roll	126.518685	126.597702876277	Primary exposure time	0.000000	3.2
Window start time	107740864.184000	107740864.184000			
Window stop time	110246464.184000	110246464.184000			
SIM focus pos (mm)	-0.684267	-0.6828225247311905			
SIM defocus (mm)	0	0.001444936568705701			
SIM translation stage pos (mm)	-190.132523	-190.1425803651734			
SIM translation stage offset (mm)	0	0.01005778216563158			
Observation start time	108186821.184000	108186444.47297			
Observation start date	2001-06-06T03:52:37	2001-06-06T03:47:24			
Observation end time	108194576.184000	108194710.07329			
Observation end date	2001-06-06T06:01:52	2001-06-06T06:05:10			
Read mode	TIMED	TIMED			

2.3 Aspect



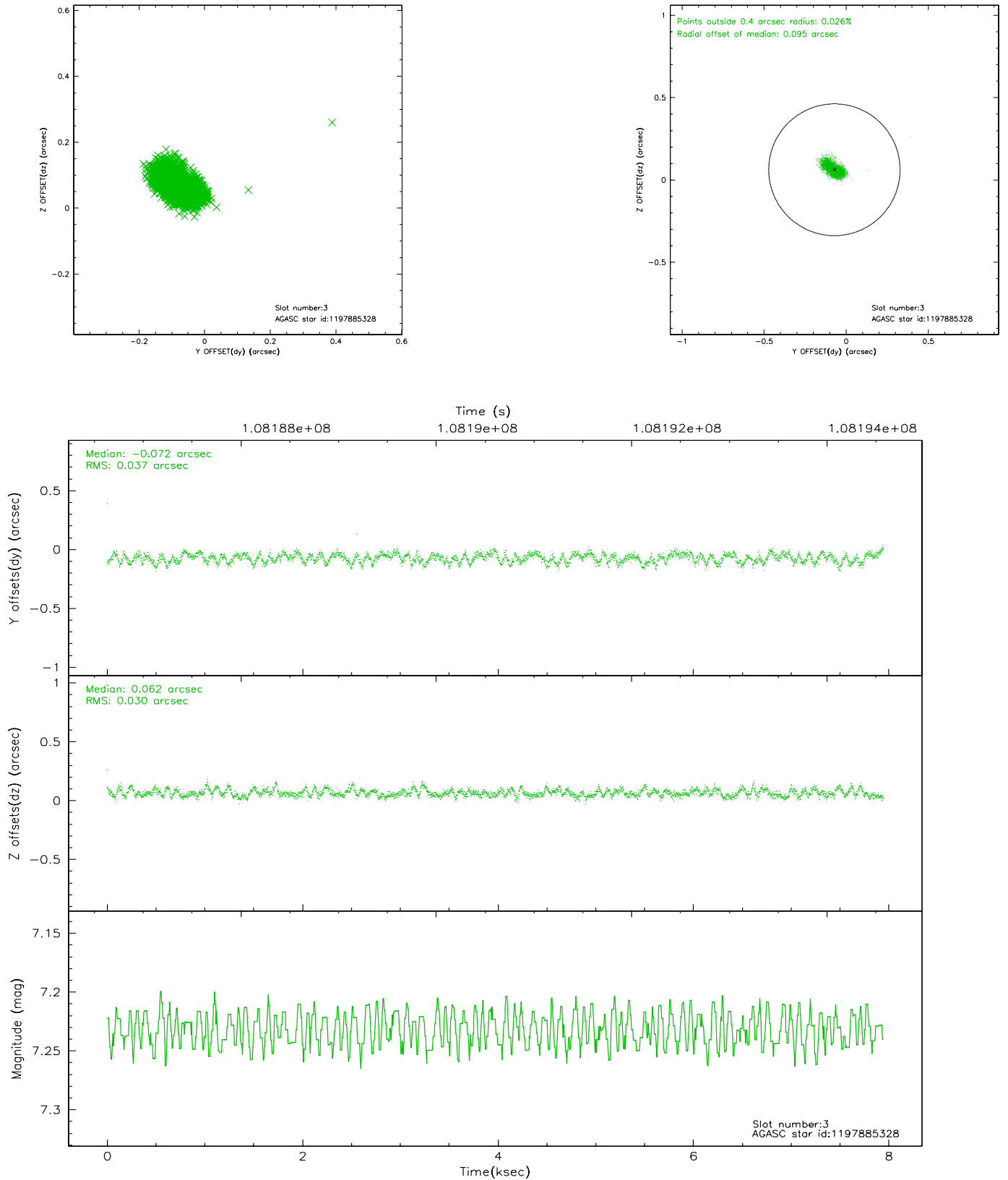


Slot Statistics

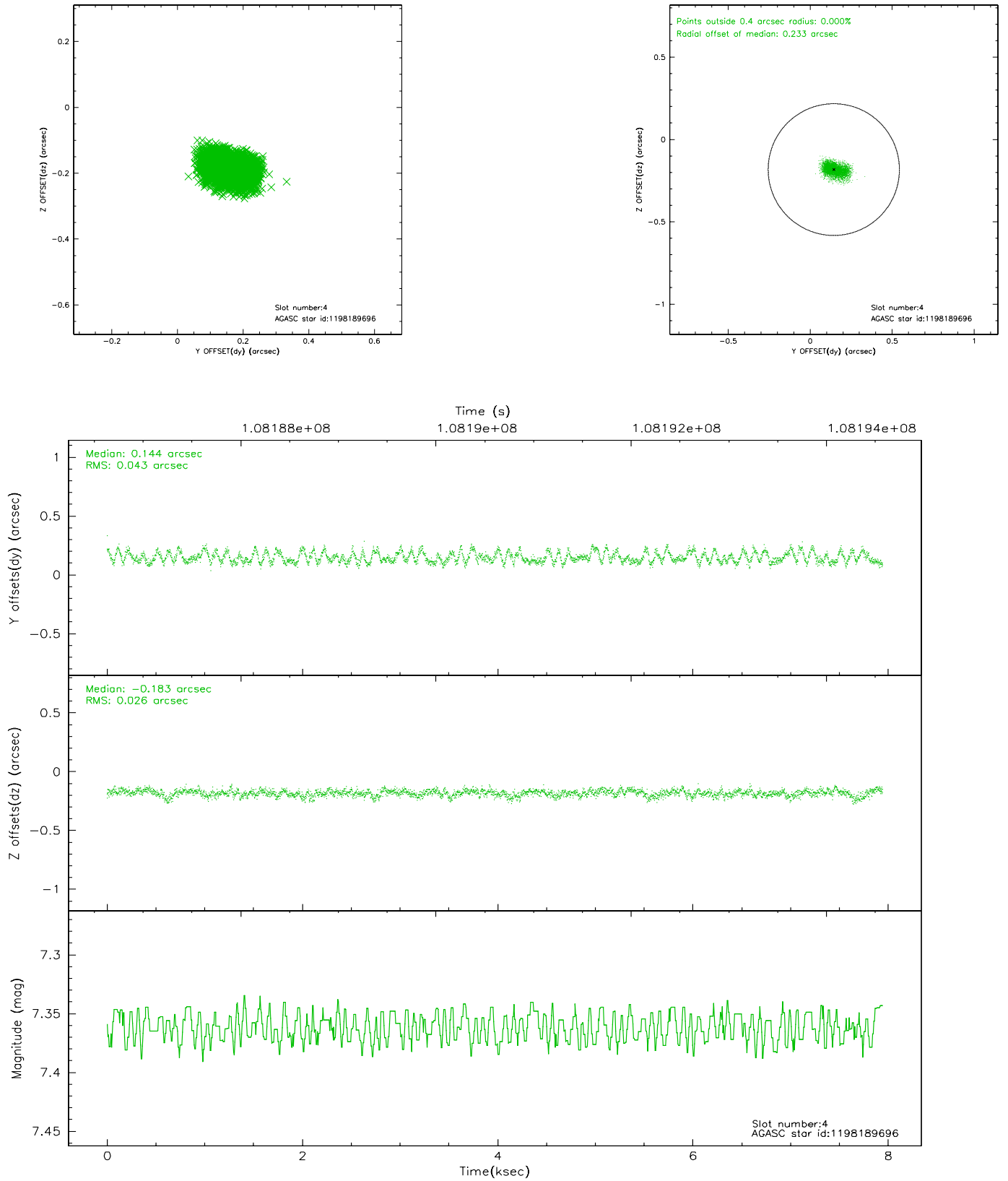
slot	status	id	mag	n_pts	med_dy	med_dz	dr1	dr2	ra	dec	mean_y	mean_z
0	FID	ACIS-S-2	7.11	1938	0.024	0.023	0.006	0.011	0.000000	0.000000	-755.35	-1726.79
1	FID	ACIS-S-4	7.20	1938	-0.064	-0.008	0.006	0.010	0.000000	0.000000	2157.48	181.00
2	FID	ACIS-S-6	7.35	1938	0.012	-0.007	0.008	0.013	0.000000	0.000000	407.48	819.16
3	GUIDE	1197885328	7.23	3875	-0.072	0.062	0.049	0.082	16.283090	-71.733943	689.53	-828.92
4	GUIDE	1198189696	7.36	3875	0.144	-0.183	0.054	0.090	15.223750	-72.697522	-1420.21	2160.19
5	GUIDE	1197750936	7.57	3875	-0.143	0.081	0.061	0.094	15.387940	-71.549550	1824.91	-403.16
6	GUIDE	1197884536	8.50	3875	0.006	0.071	0.055	0.091	17.160729	-71.835289	-197.04	-1395.84
7	GUIDE	1197884712	8.30	3874	0.064	-0.030	0.049	0.080	16.087398	-72.252690	-679.03	459.84

2.4 Star Slots

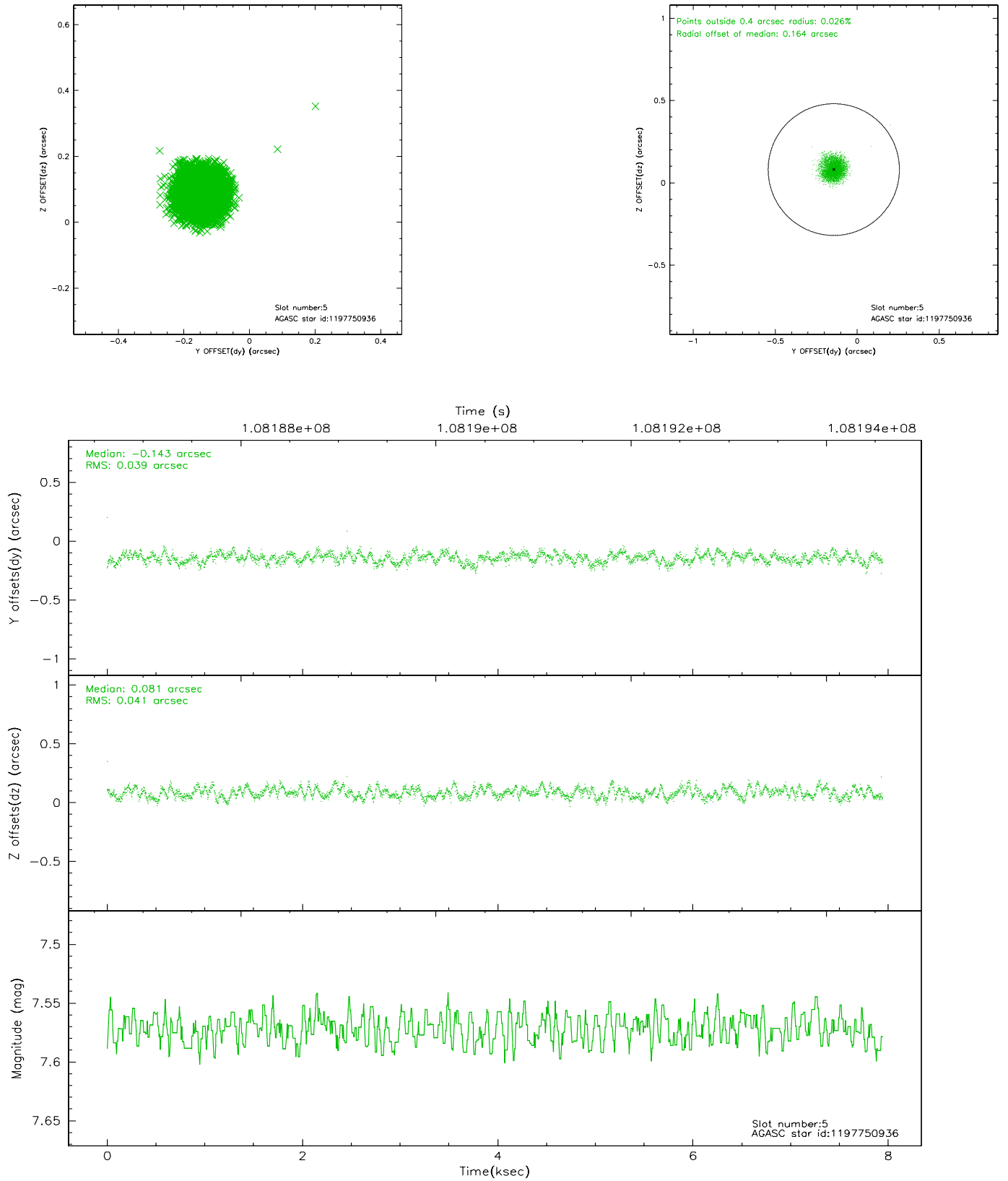
2.4.1 Slot 3



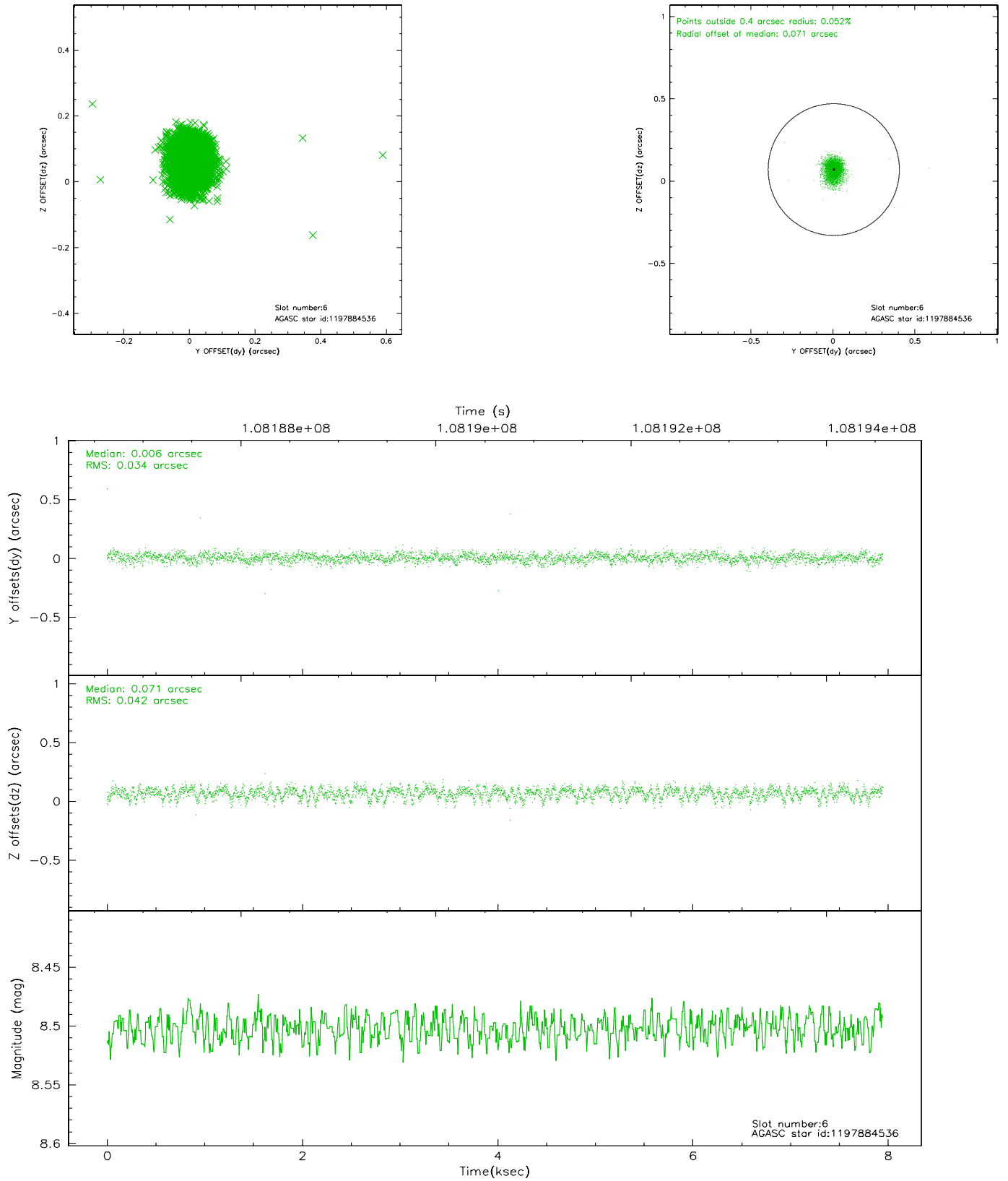
2.4.2 Slot 4



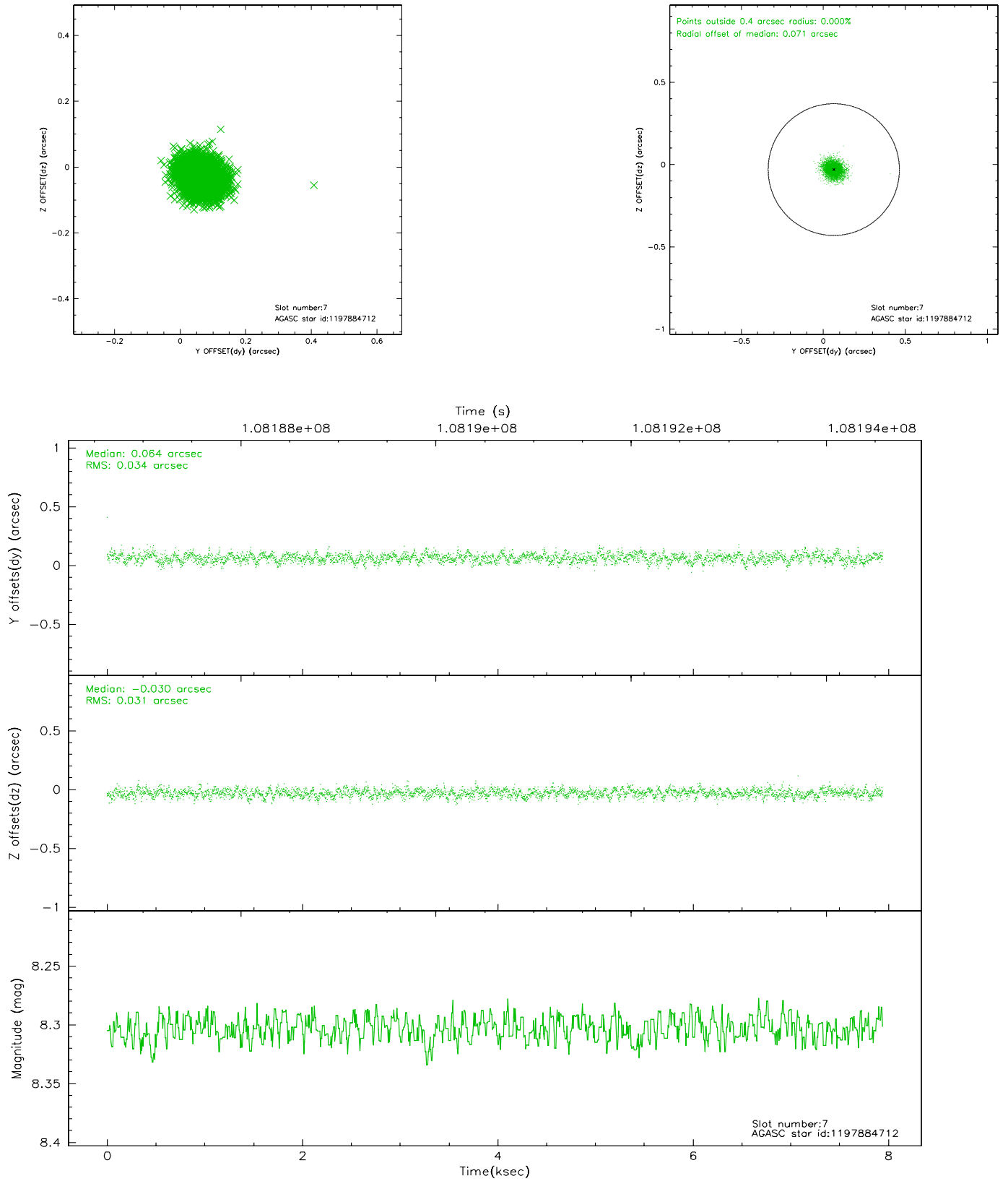
2.4.3 Slot 5



2.4.4 Slot 6

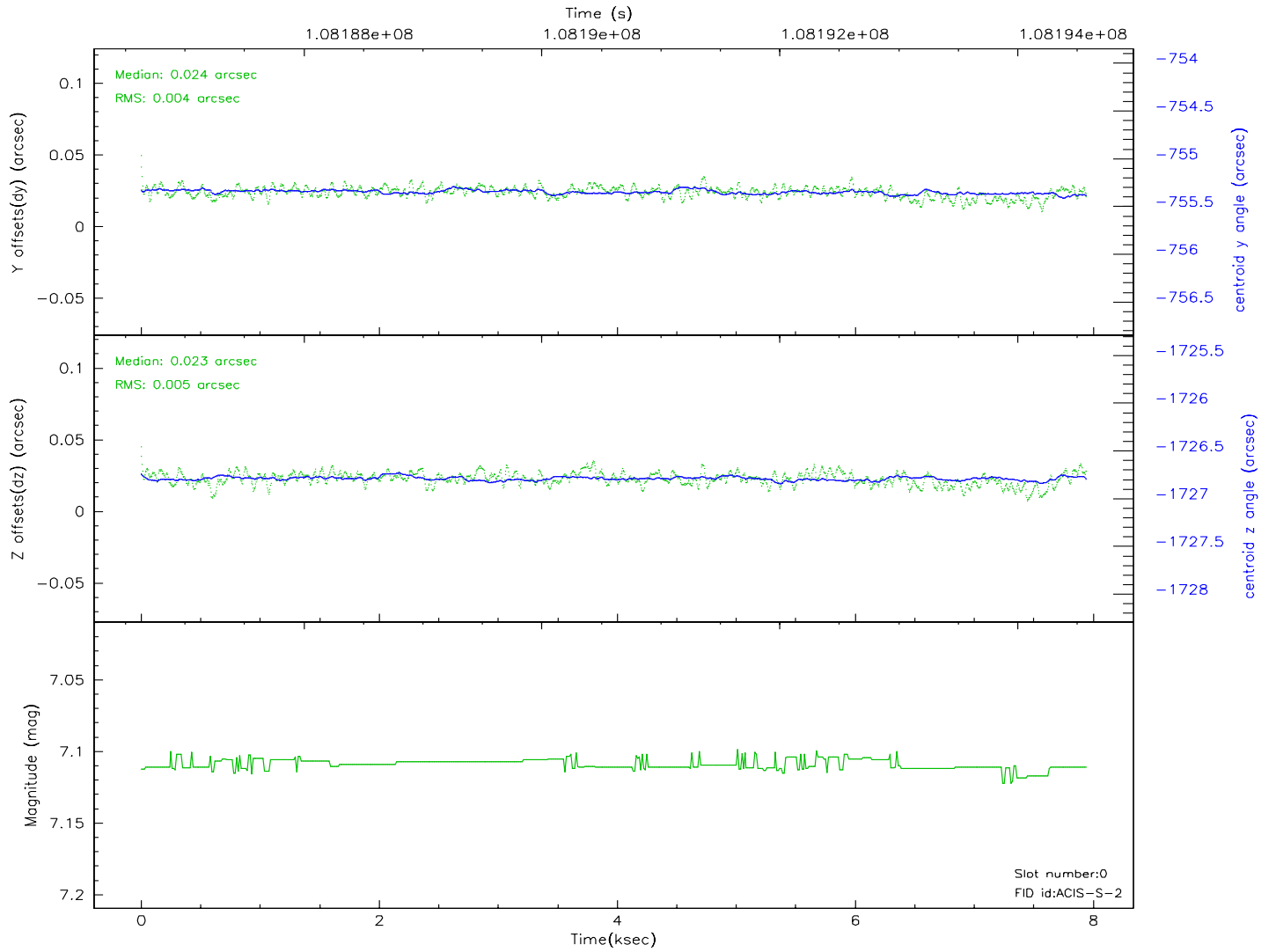
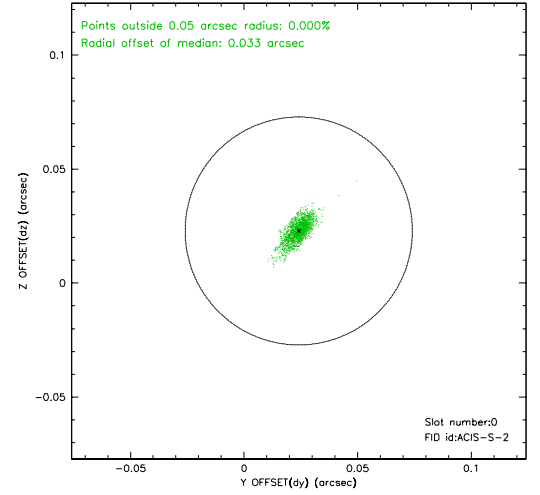
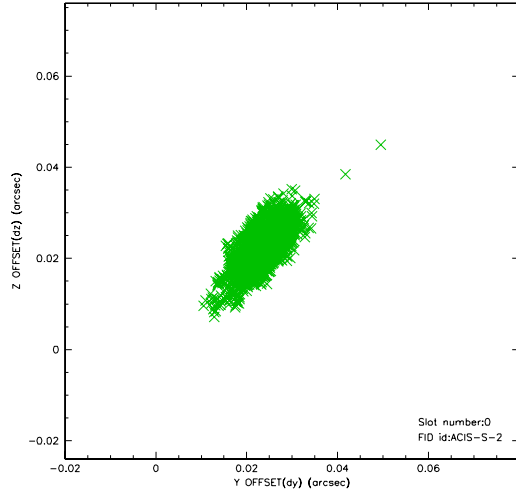


2.4.5 Slot 7

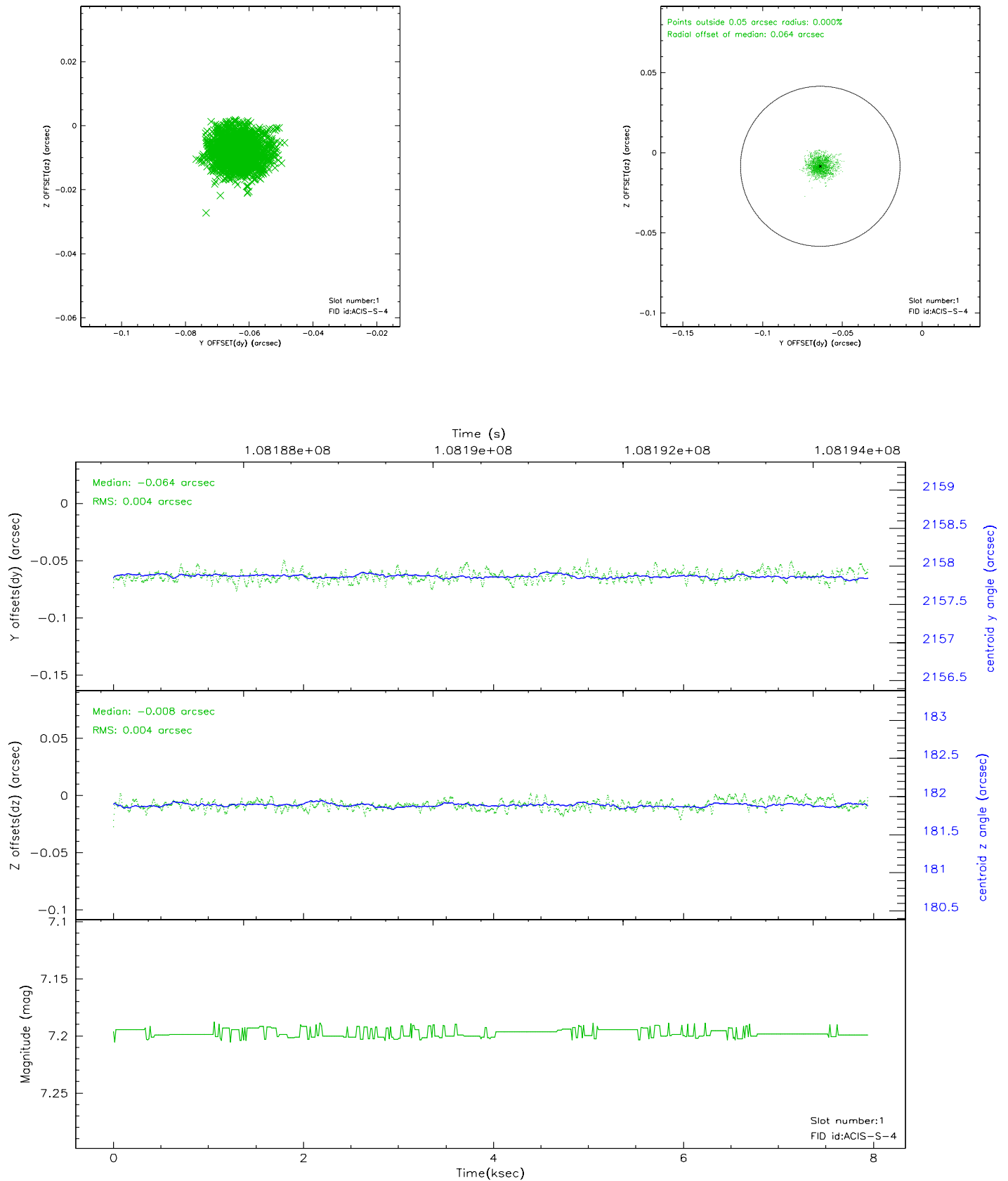


2.5 FID Slots

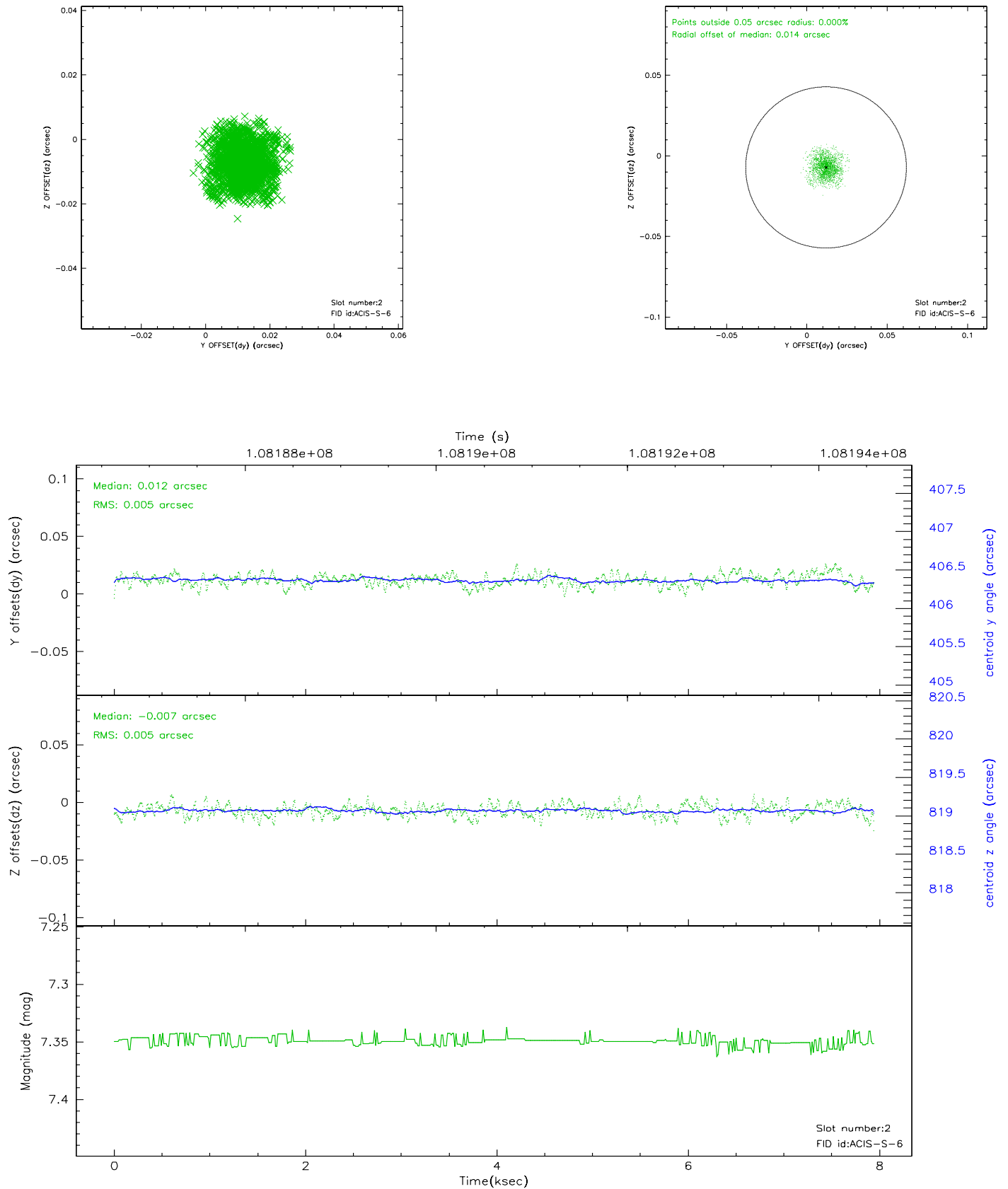
2.5.1 Slot 0



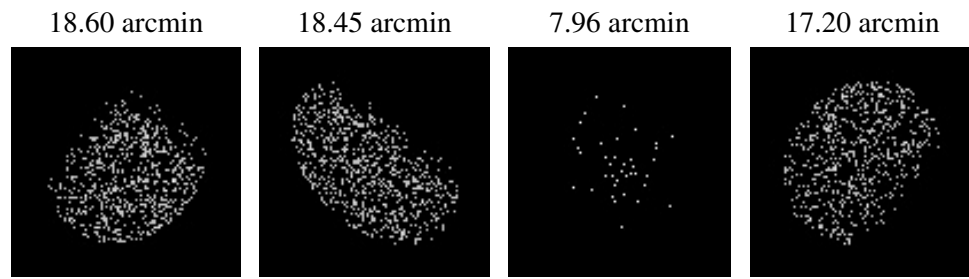
2.5.2 Slot 1



2.5.3 Slot 2



3 Point Sources



A Summary

A.1 Status

V&V Scientist	Beth Sundheim
V&V Date (YYYY-MM-DD)	2006.11.27
V&V Edition	1
V&V Disposition and Status	OK
V&V Charge Time	7.5

A.2 Comments

Window constraint OK.