

V&V Reference Report

L2 ASCDS Version : 8.4.5

Observation 12091 - L2 Version 3
Chandra X-Ray Center

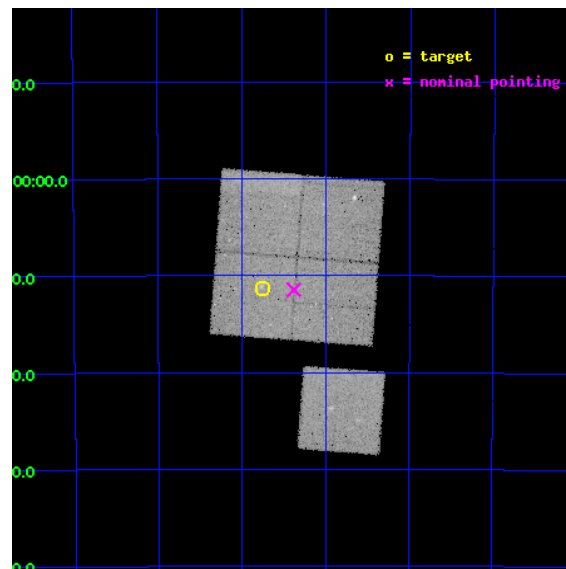
L2 Processing Date : Jun 22 2012

Contents

1	Front	2
2	OBI	3
2.1	OBI	3
2.1.1	Images	3
2.1.2	Bias	3
2.1.3	Parameters	4
2.1.4	Events	4
2.2	Compared Parameters	5
2.3	Aspect	6
2.4	Star Slots	9
2.4.1	Slot 3	9
2.4.2	Slot 4	10
2.4.3	Slot 5	11
2.4.4	Slot 6	12
2.4.5	Slot 7	13
2.5	FID Slots	14
2.5.1	Slot 0	14
2.5.2	Slot 2	15
A	Summary	16
A.1	Status	16
A.2	Comments	16

1 Front

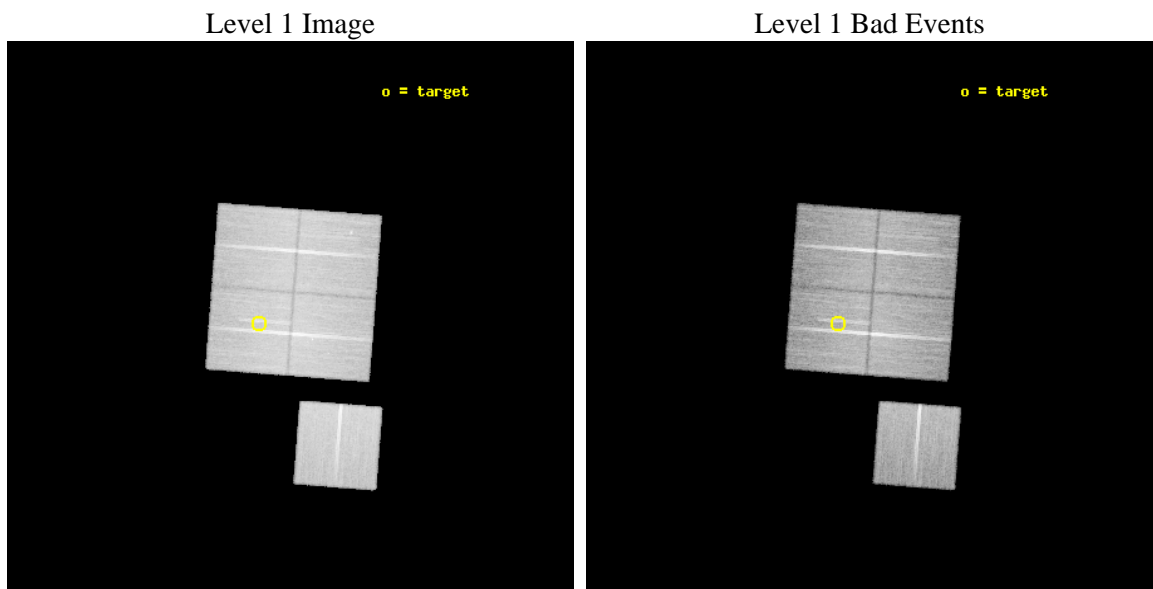
seq_num	800934	Sequence number
obs_id	12091	Observation id
title	Chandra Observations of SZ-selected Galaxy Clusters Detected by the South Pole Telescope	Proposal title
observer	Dr. Stephen Murray	Principal investigator
object	SPT-CL2343-5411	Source name
dtcycle	0	
cycle	P	events from which exps? Prim/Second/Both
ra_targ	355.687917	Observer's specified target RA [deg]
dec_targ	-54.189	Observer's specified target Dec [deg]
ra_nom	355.59499763863	Nominal RA [deg]
dec_nom	-54.191287451983	Nominal Dec [deg]
roll_nom	184.41863878776	Nominal Roll [deg]
revision	3	Processing version of data
ontime	38244.659433365	Sum of GTIs [s]
livetime	37744.964802559	Livetime [s]
ontime0	38241.518343568	Sum of GTIs [s]
ontime1	38241.518473089	Sum of GTIs [s]
ontime2	38247.800294161	Sum of GTIs [s]
ontime3	38244.659433365	Sum of GTIs [s]
ontime6	38241.518363476	Sum of GTIs [s]
l2events	134973	Number of level 2 events



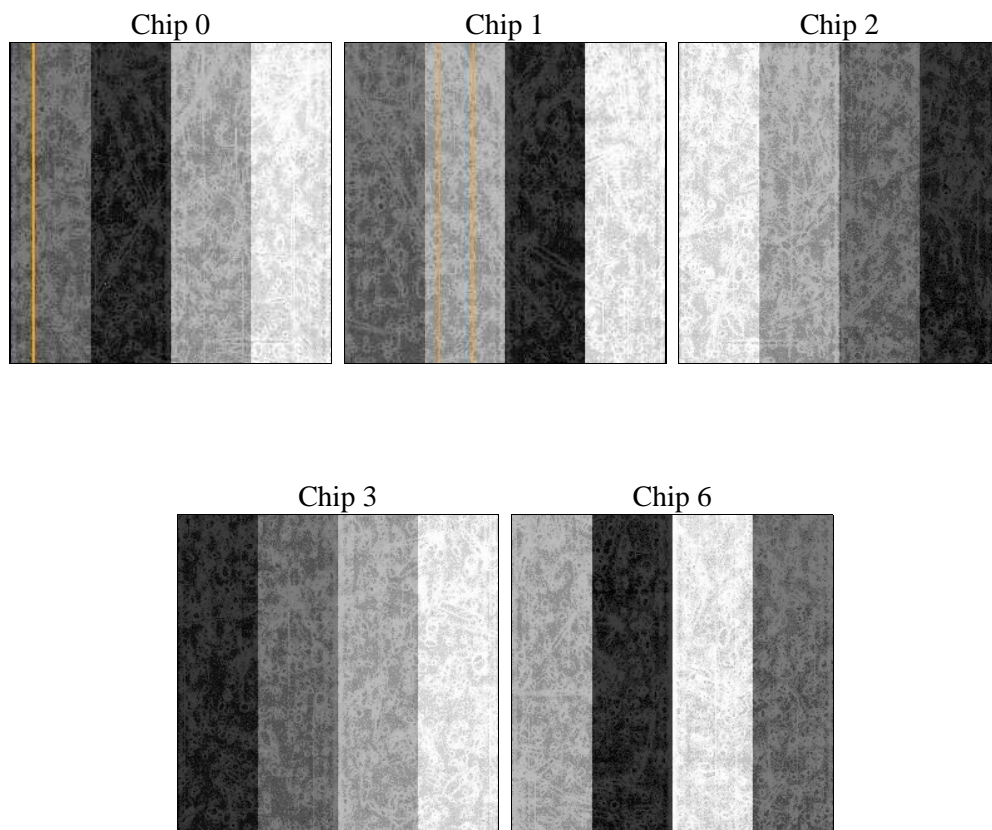
2 OBI

2.1 OBI

2.1.1 Images



2.1.2 Bias



2.1.3 Parameters

obi_num	0	Obi number	sched_exp_time	38200.000000	[s] Scheduled observation exposure time
ascdsver	8.4.5	Processing system revision	ontime	38244.659433365	Sum of GTIs [s]
caldsver	4.4.10	 	ontime0	38241.518343568	Sum of GTIs [s]
date	2012-06-22T22:21:32	Date and time of file creation	ontime1	38241.518473089	Sum of GTIs [s]
revision	3	Processing version of data	ontime2	38247.800294161	Sum of GTIs [s]
			ontime3	38244.659433365	Sum of GTIs [s]
			ontime6	38241.518363476	Sum of GTIs [s]
			l1events	1437025	Number of level 1 events

2.1.4 Events

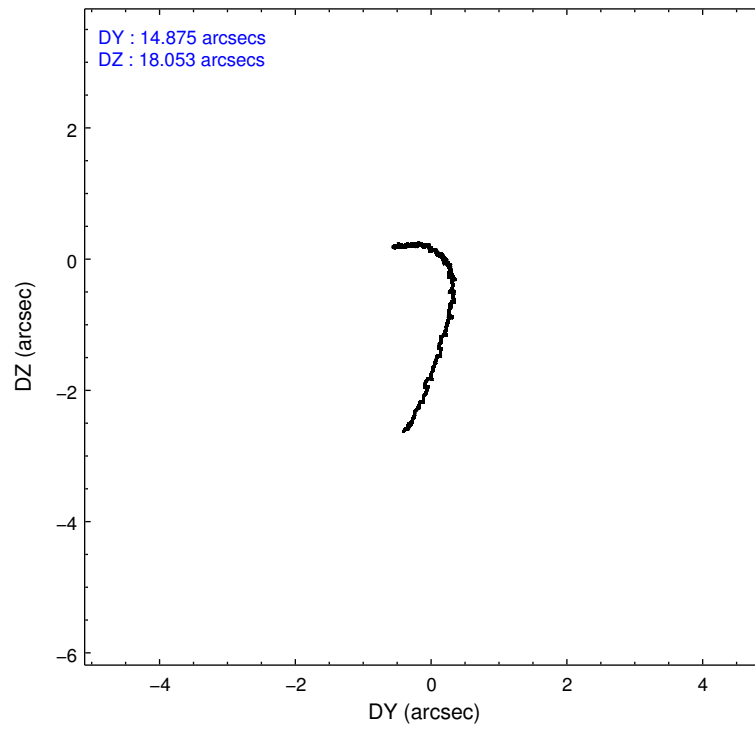
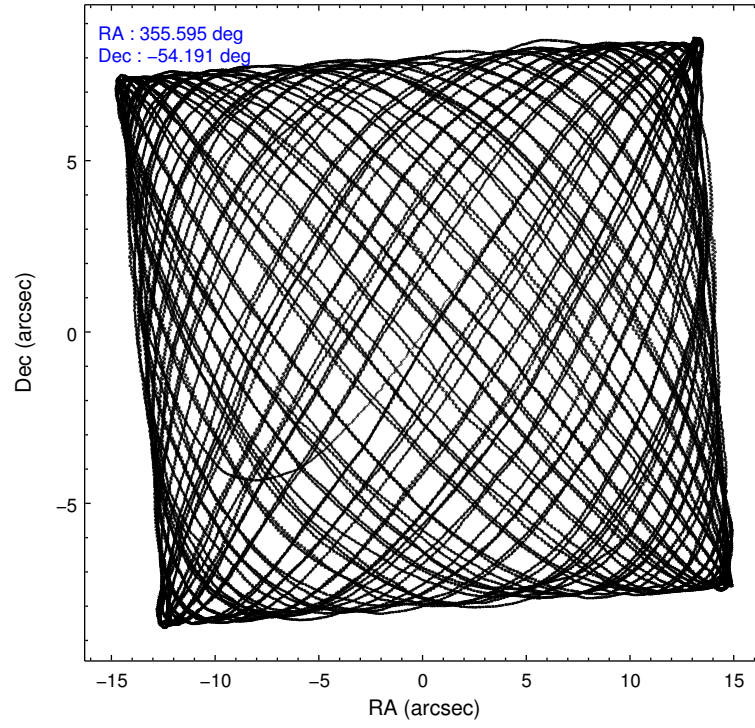
	ccd 0	ccd 1	ccd 2	ccd 3	ccd 6
level 1 events	279250	275493	295988	291536	294758
rejected events	247025	239893	264382	261434	262497
rejected %	88%	87%	89%	89%	89%

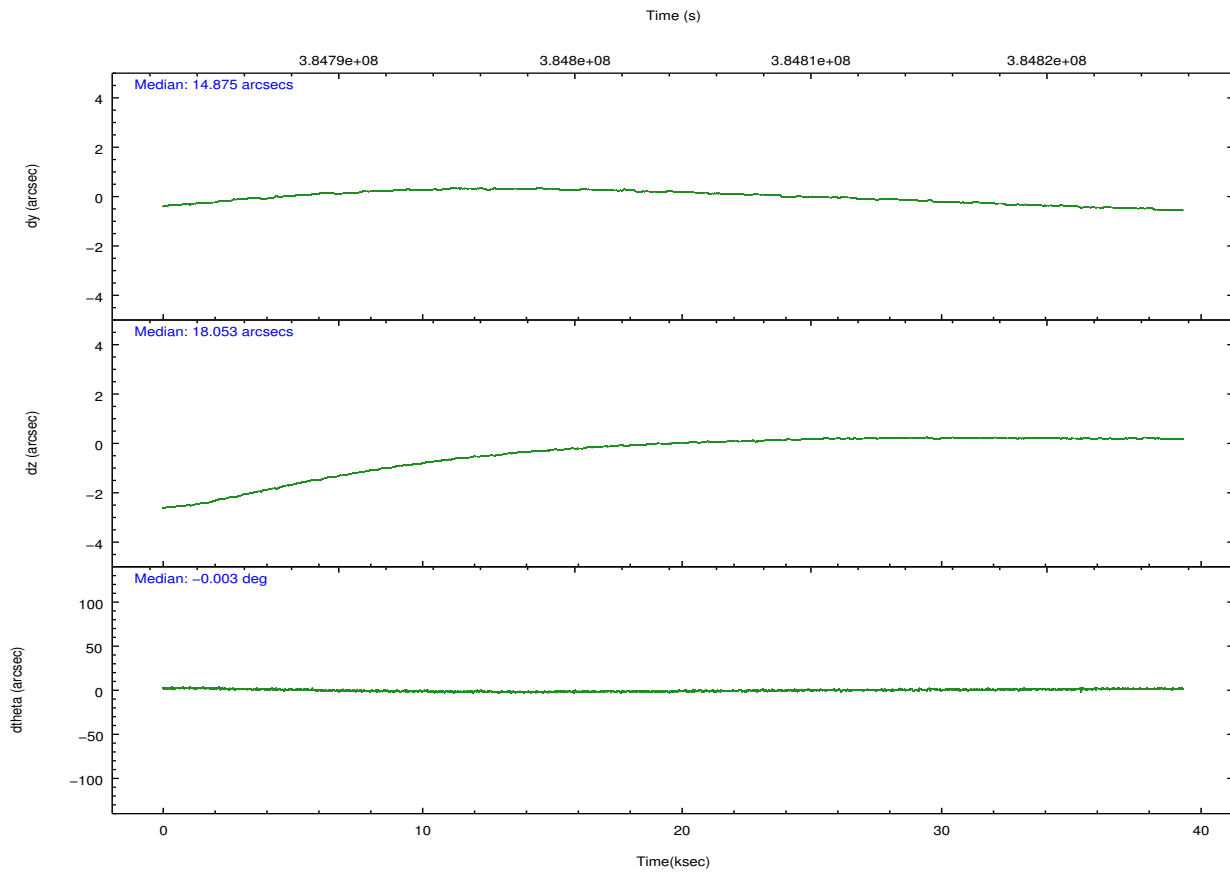
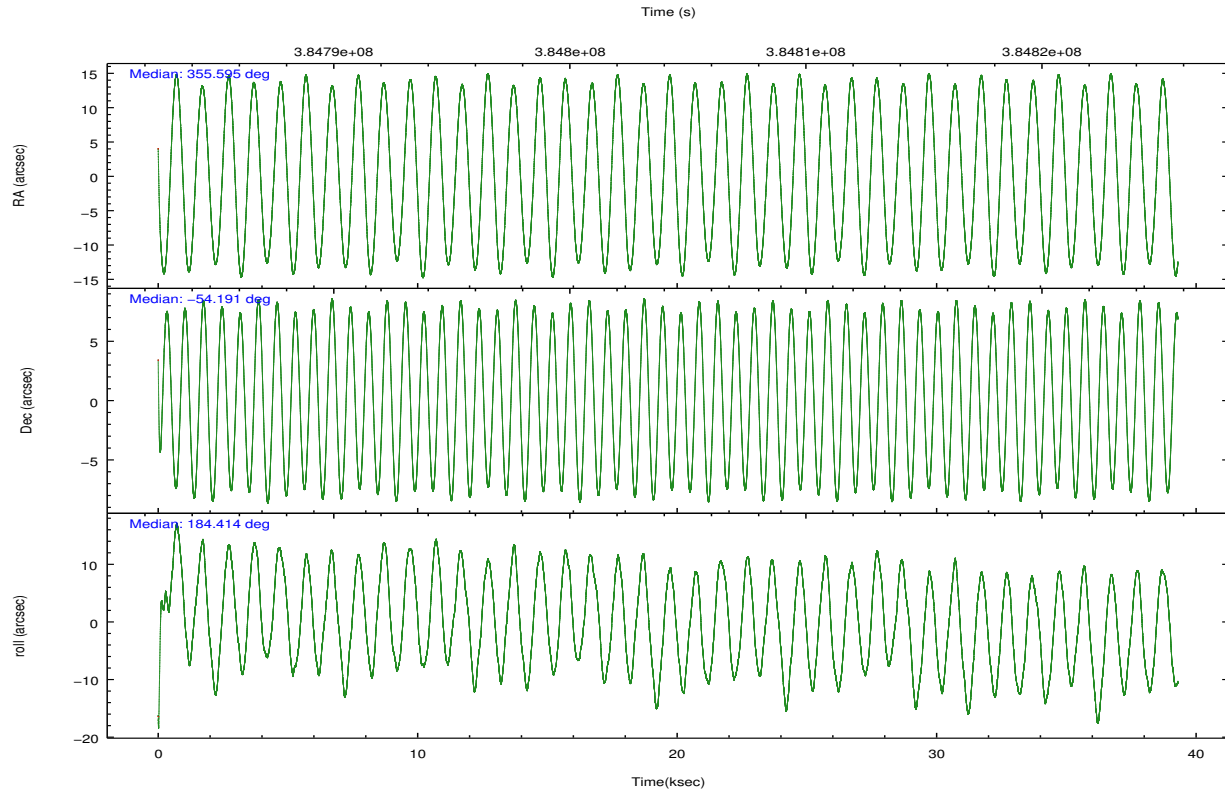
	ccd 0	ccd 1	ccd 2	ccd 3	ccd 6
grade 0 events	11386	12797	11373	10773	11324
	4%	4%	3%	3%	3%
grade 1 events	170	156	182	179	168
	0%	0%	0%	0%	0%
grade 2 events	7870	8281	7680	6746	7273
	2%	3%	2%	2%	2%
grade 3 events	3509	3701	3281	3206	3434
	1%	1%	1%	1%	1%
grade 4 events	3189	3639	3280	3304	3402
	1%	1%	1%	1%	1%
grade 5 events	11741	12176	11385	12896	12790
	4%	4%	3%	4%	4%
grade 6 events	6276	7189	6002	6082	6835
	2%	2%	2%	2%	2%
grade 7 events	235109	227554	252805	248350	249532
	84%	82%	85%	85%	84%

2.2 Compared Parameters

Parameter	Planned	Actual	Parameter	Planned	Actual
Instrument	ACIS	ACIS	Obspar format version number	7	7
Detector	ACIS-01236	ACIS-01236	Obspar file type	PREDICTED	ACTUAL
Grating	NONE	NONE	Obspar update status	NONE	UPDATED
Data mode	VFAINT	VFAINT	Number of optional ACIS chips dropped	0	0
Observation mode	POINTING	POINTING	On-chip summing requested	N	N
[deg] Pointing RA	355.633668	355.5949976386324	Subarray requested	NONE	NONE
[deg] Pointing Dec	-54.175653	-54.19128745198301	Alternating exposures requested	N	N
[deg] Pointing Roll	184.241322	184.4186387877648	[s] Primary exposure time	0.000000	3.1
[mm] SIM focus pos	-0.782348	-0.7809083437167272			
[mm] SIM defocus	0	0.001439871863259334			
[mm] SIM translation stage pos	-225.840463	-225.8433433320239			
[mm] SIM translation stage offset	-7.752	-7.749109670905796			
[s] Observation start time (MET)	384785611.184000	384783513.02032			
Observation start date	2010-03-12T12:52:25	2010-03-12T12:18:33			
[s] Observation end time (MET)	384823811.184000	384824673.43491			
Observation end date	2010-03-12T23:29:05	2010-03-12T23:44:33			
Read mode	TIMED	TIMED			

2.3 Aspect



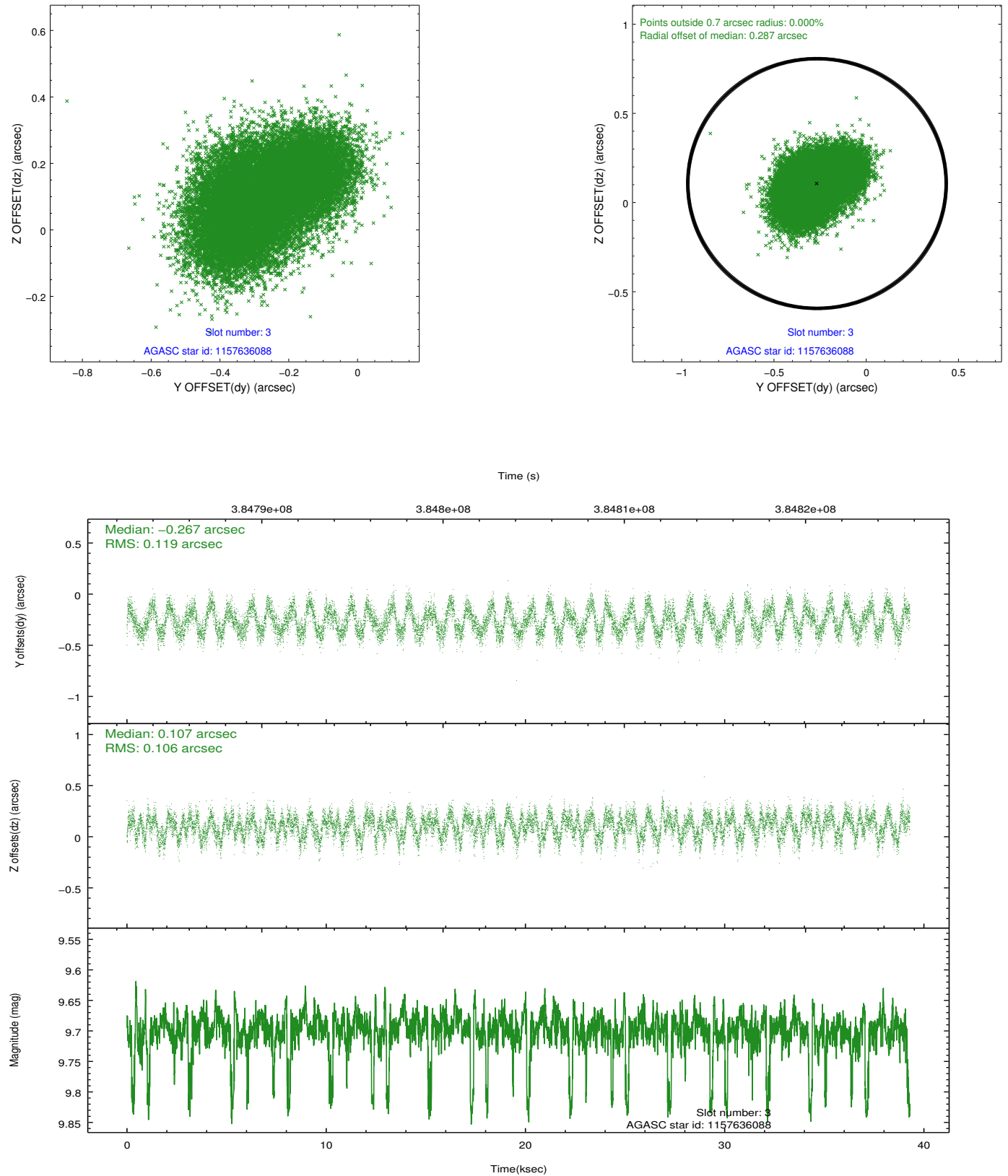


Slot Statistics

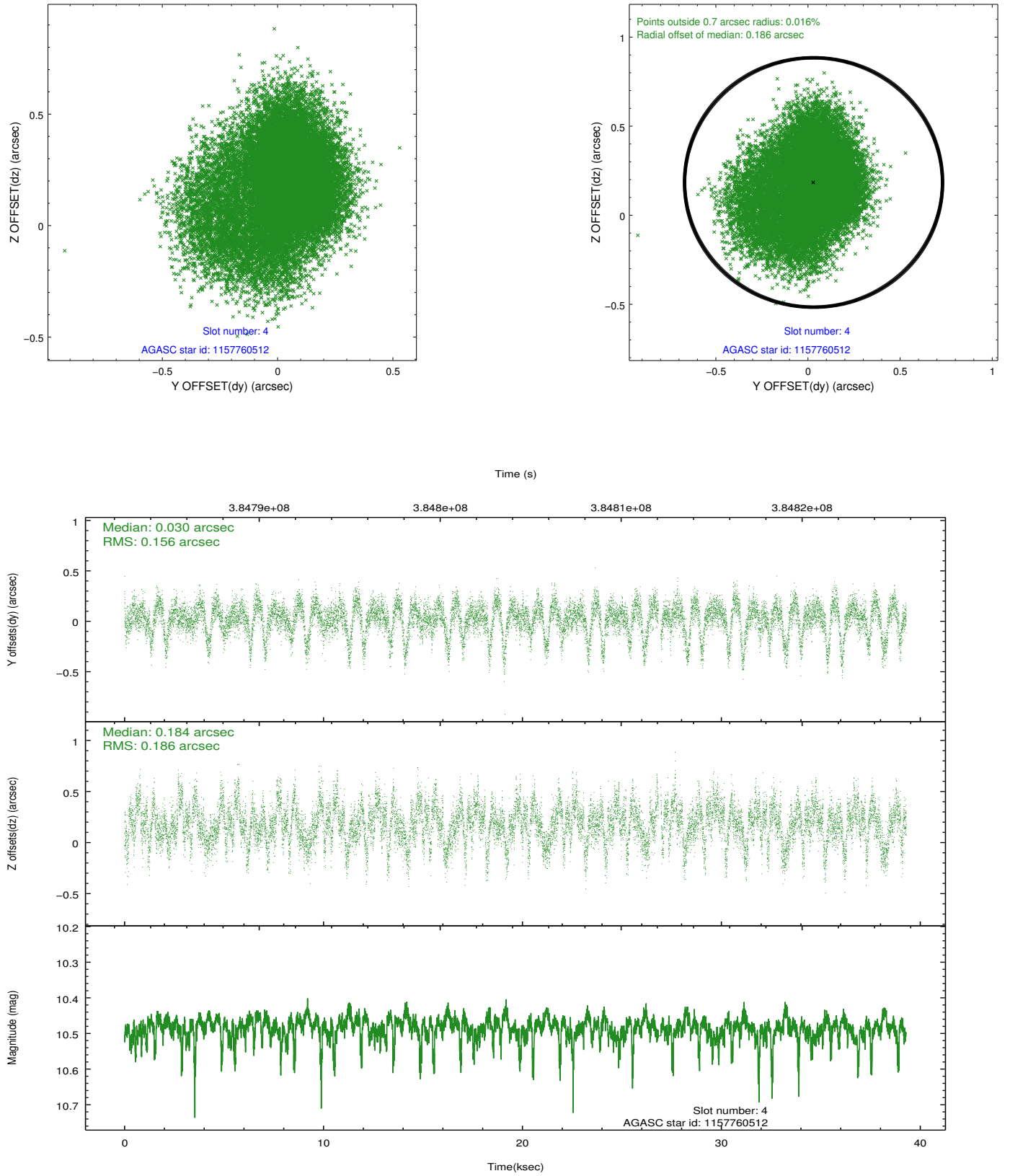
slot	status	id	mag	n_pts	med_dy	med_dz	dr1	dr2	ra	dec	mean_y	mean_z
0	FID	ACIS-I-1	7.01	9586	-0.019	-0.025	0.016	0.028	0.000000	0.000000	924.47	-1000.39
1	OMITTED		0.00	0	0.000	0.000	0.000	0.000	0.000000	0.000000	0.00	0.00
2	FID	ACIS-I-6	7.03	9586	-0.041	0.070	0.016	0.028	0.000000	0.000000	390.20	1541.49
3	GUIDE	1157636088	9.70	19074	-0.267	0.107	0.174	0.263	354.742088	-54.768987	2005.12	2005.40
4	GUIDE	1157760512	10.48	19065	0.030	0.184	0.256	0.432	356.114790	-53.564130	-1188.31	-2115.40
5	GUIDE	1157765920	9.19	19151	0.448	-0.103	0.117	0.176	356.046059	-54.690142	-718.25	1912.98
6	GUIDE	1157767416	5.89	19170	-0.220	-0.016	0.080	0.125	356.079960	-54.436056	-862.55	1007.14
7	GUIDE	1157764888	9.65	19074	0.032	-0.156	0.182	0.276	355.950664	-54.829013	-482.19	2396.08

2.4 Star Slots

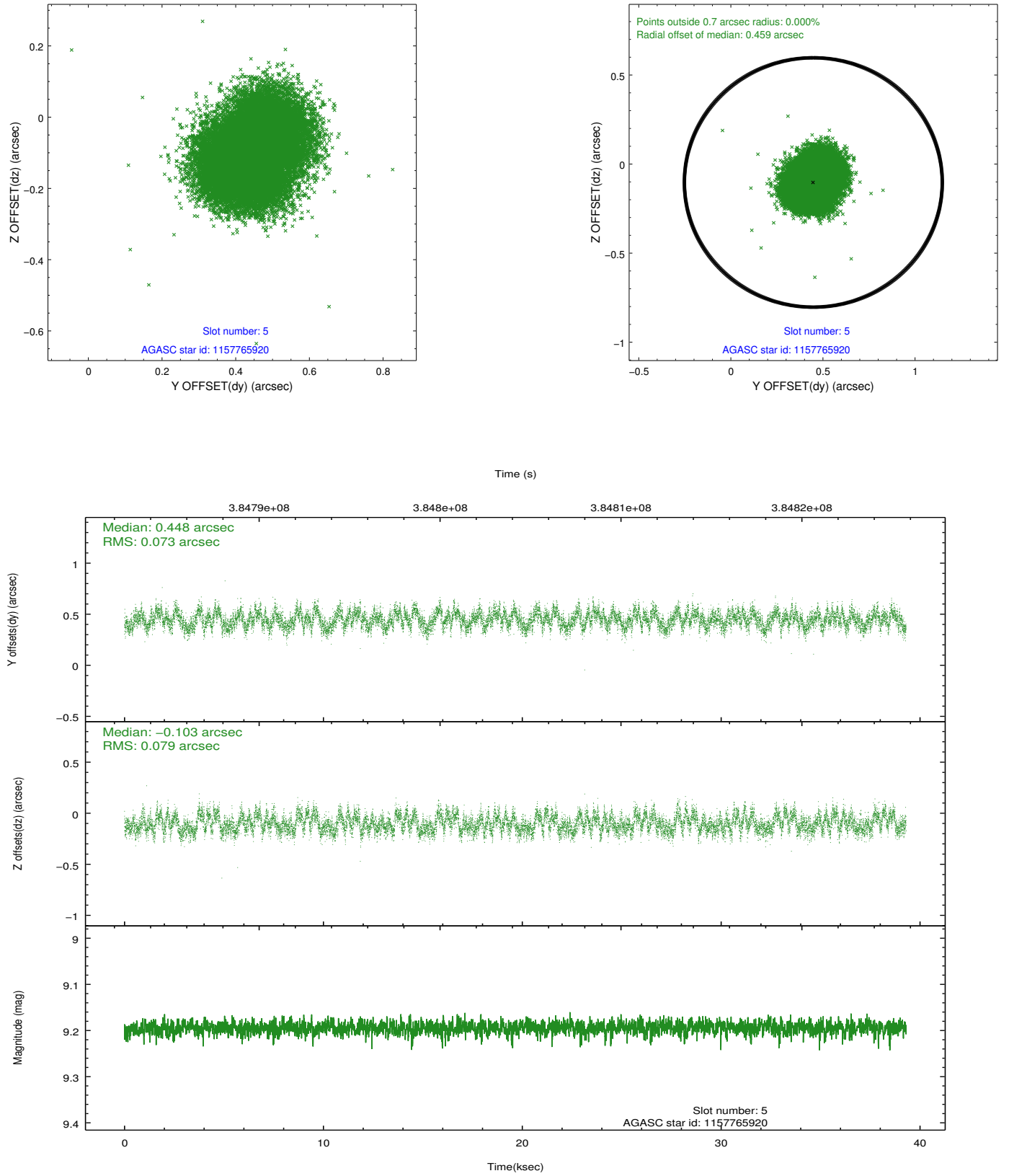
2.4.1 Slot 3



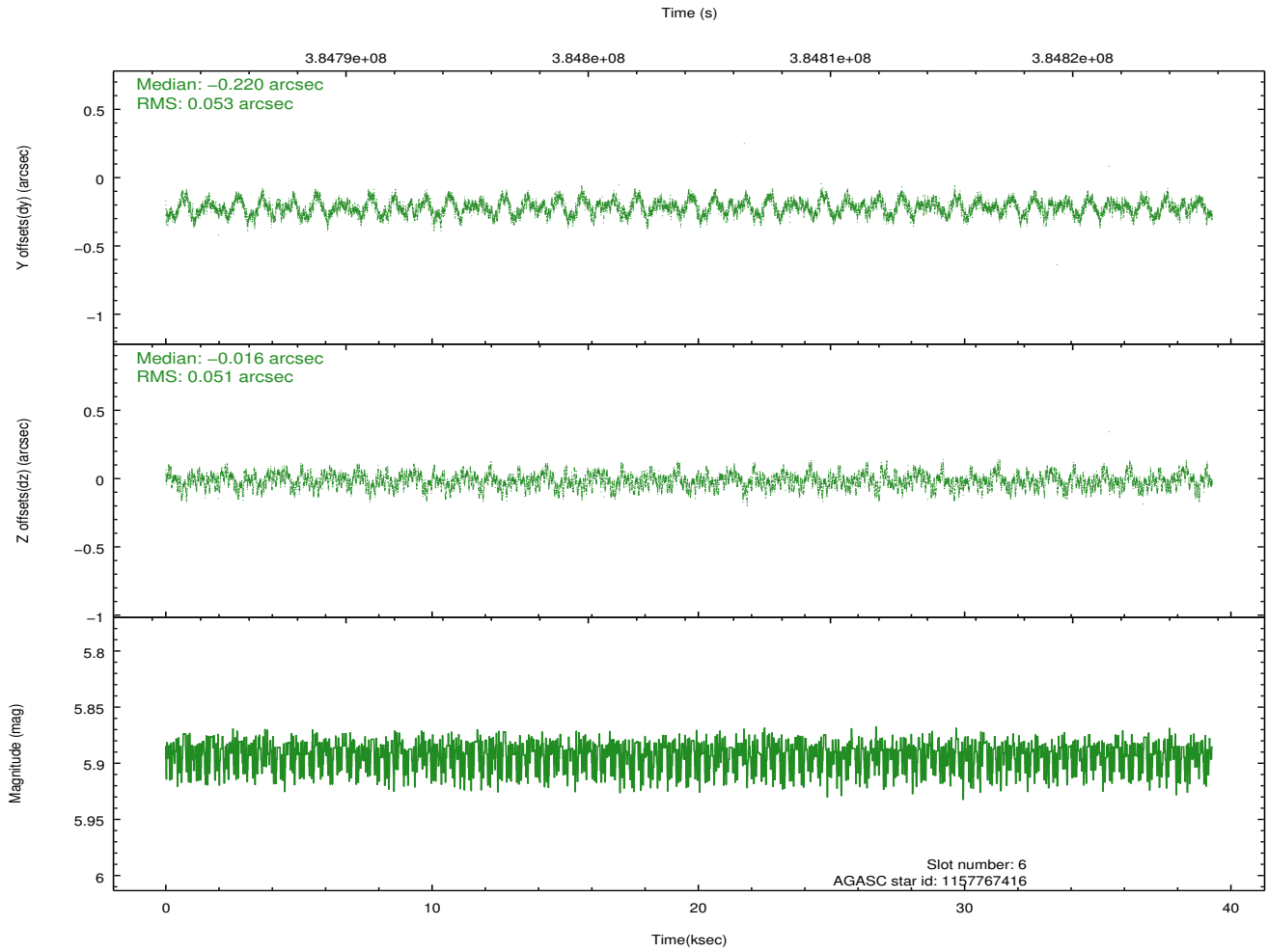
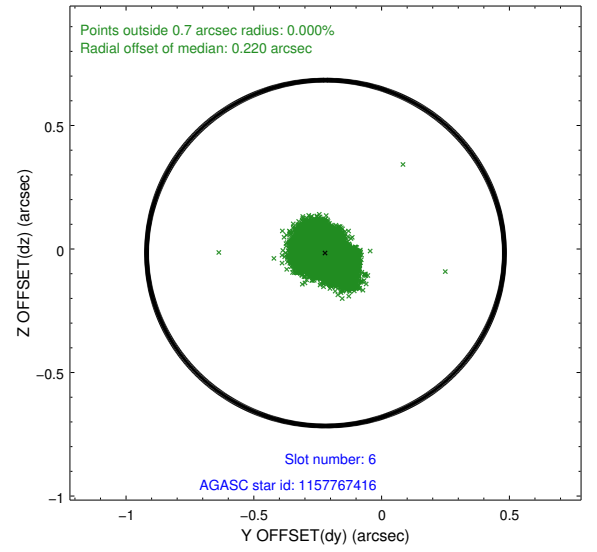
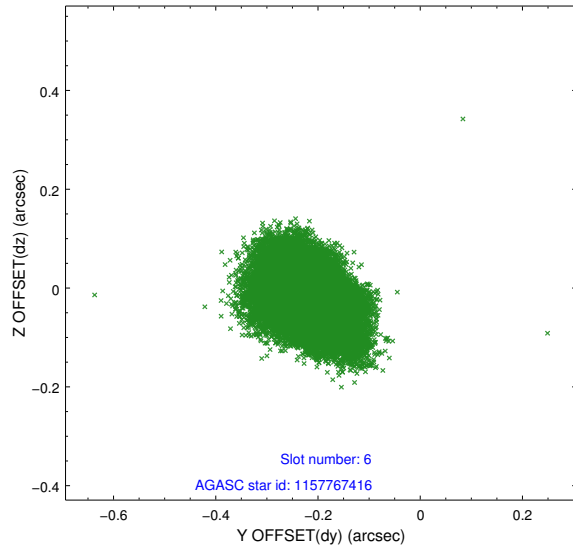
2.4.2 Slot 4



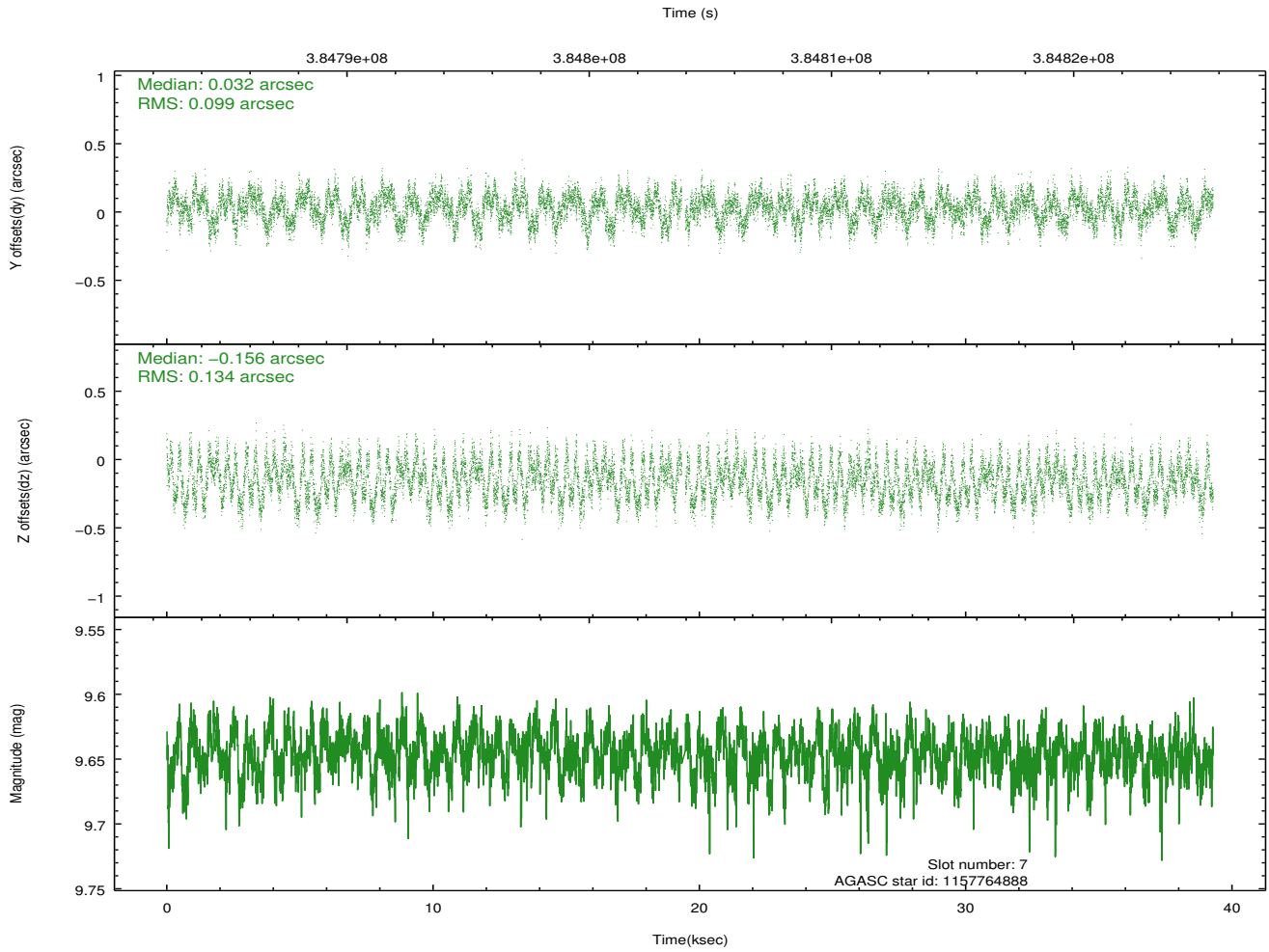
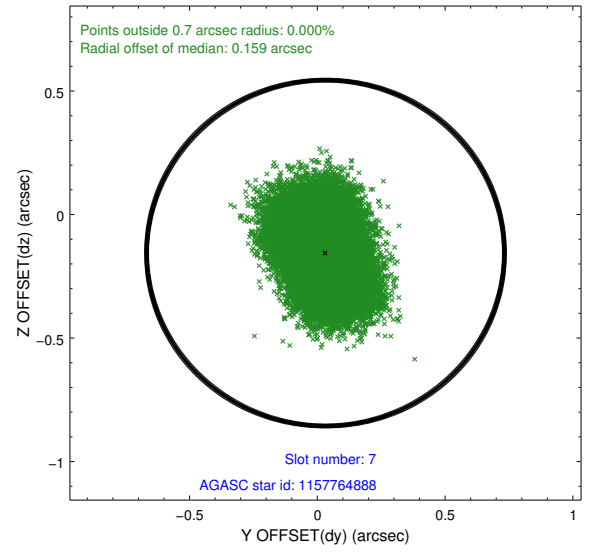
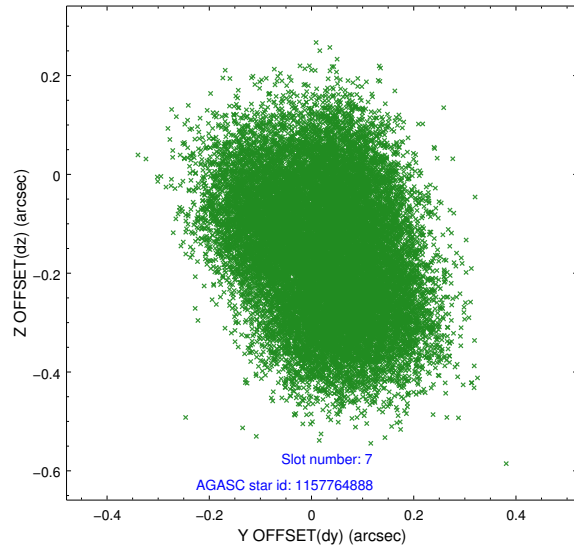
2.4.3 Slot 5



2.4.4 Slot 6

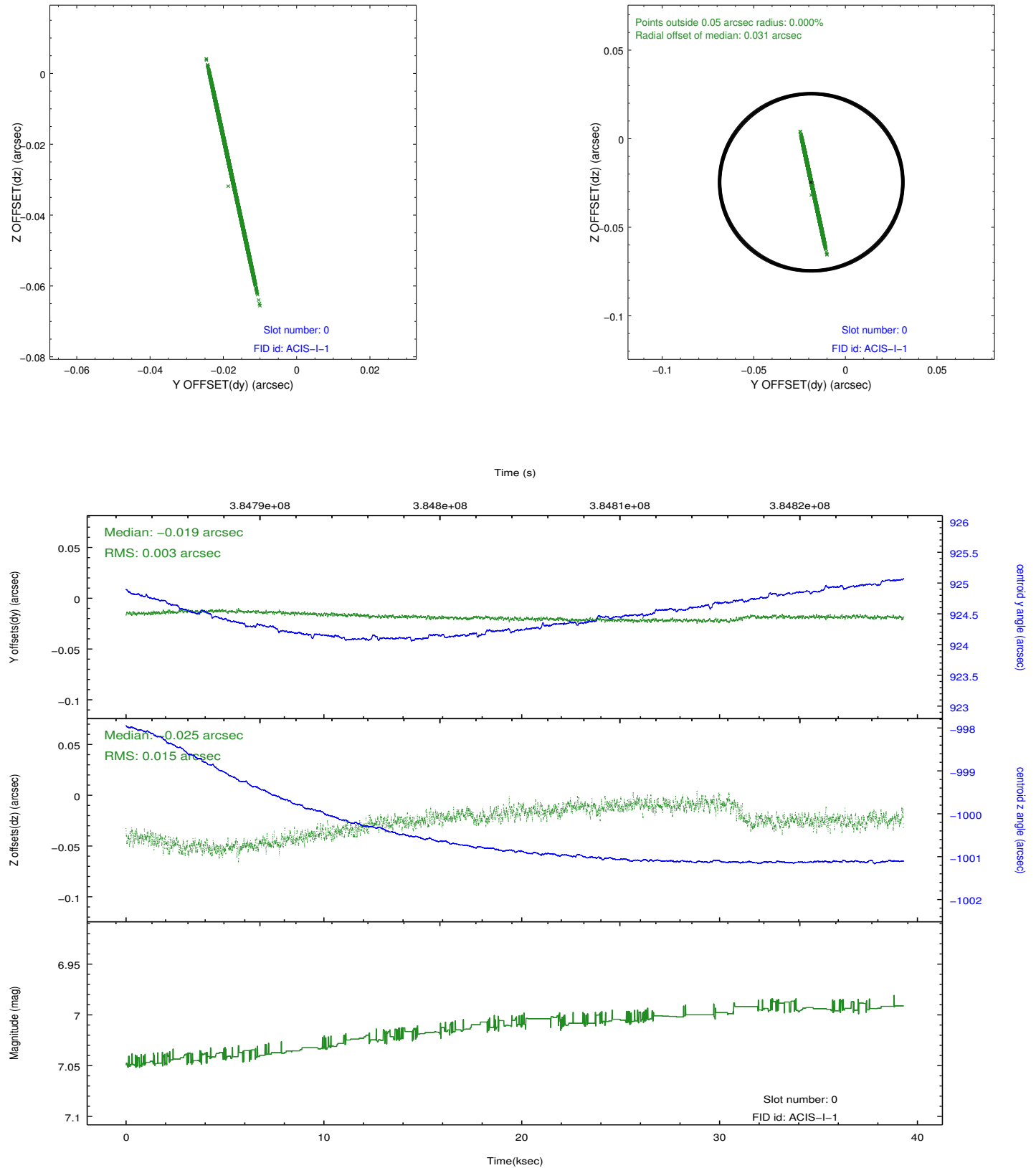


2.4.5 Slot 7

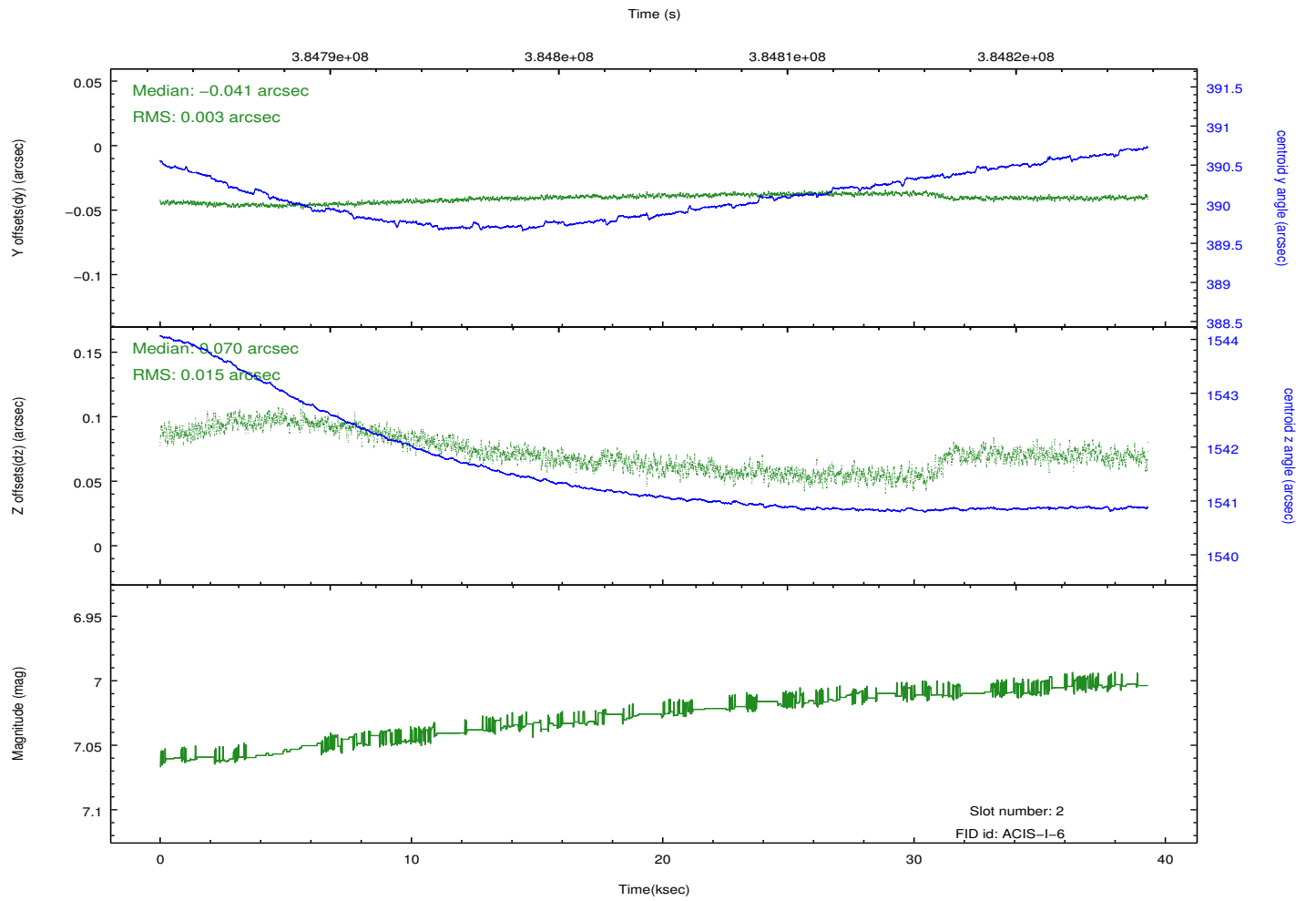
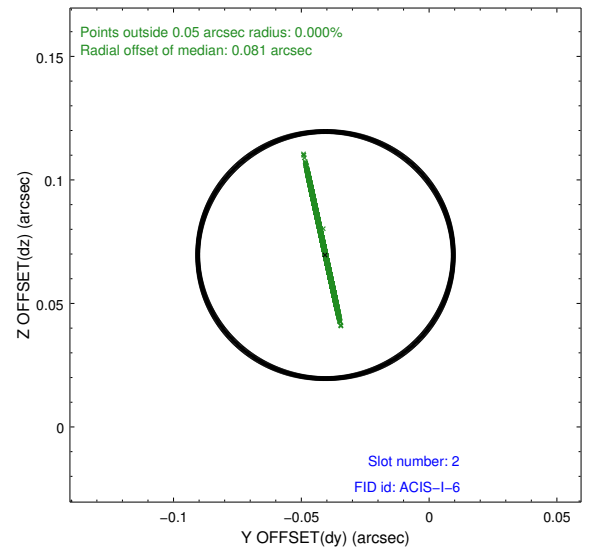
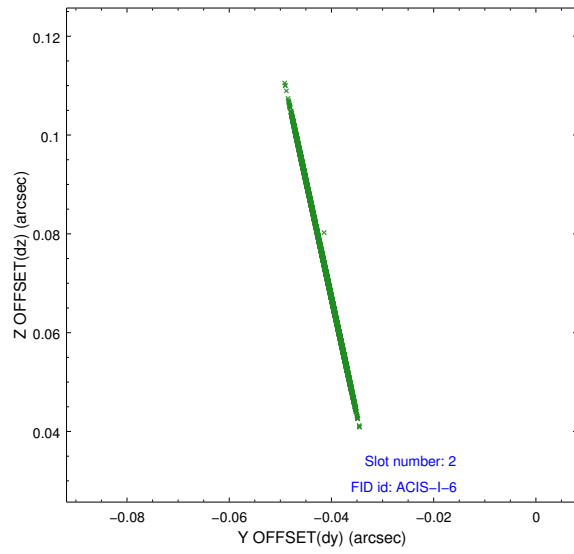


2.5 FID Slots

2.5.1 Slot 0



2.5.2 Slot 2



A Summary

A.1 Status

V&V Scientist	Jen Lauer
V&V Date (YYYY-MM-DD)	2012.06.28
V&V Edition	1
V&V Disposition and Status	OK
V&V Charge Time	38.244659433365

A.2 Comments

The fid light in slot 1 was removed from the aspect solution due to poor data quality. The aspect solution is improved by the removal of this fid light from the solution.