

V&V Reference Report

L2 ASCDS Version : 8.4.5

Observation 11881 - L2 Version 3
Chandra X-Ray Center

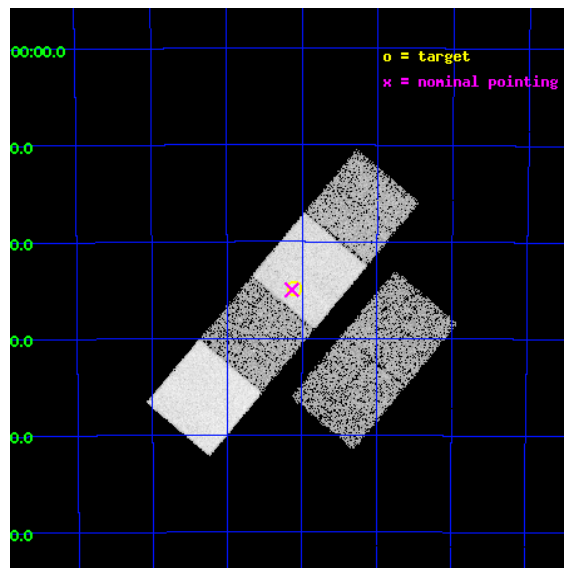
L2 Processing Date : Jun 28 2012

Contents

1	Front	2
2	OBI	3
2.1	OBI	3
2.1.1	Images	3
2.1.2	Bias	3
2.1.3	Parameters	4
2.1.4	Events	4
2.2	Compared Parameters	5
2.3	Aspect	6
2.4	Star Slots	9
2.4.1	Slot 3	9
2.4.2	Slot 4	10
2.4.3	Slot 5	11
2.4.4	Slot 6	12
2.4.5	Slot 7	13
2.5	FID Slots	14
2.5.1	Slot 0	14
2.5.2	Slot 1	15
2.5.3	Slot 2	16
A	Summary	17
A.1	Status	17
A.2	Comments	17

1 Front

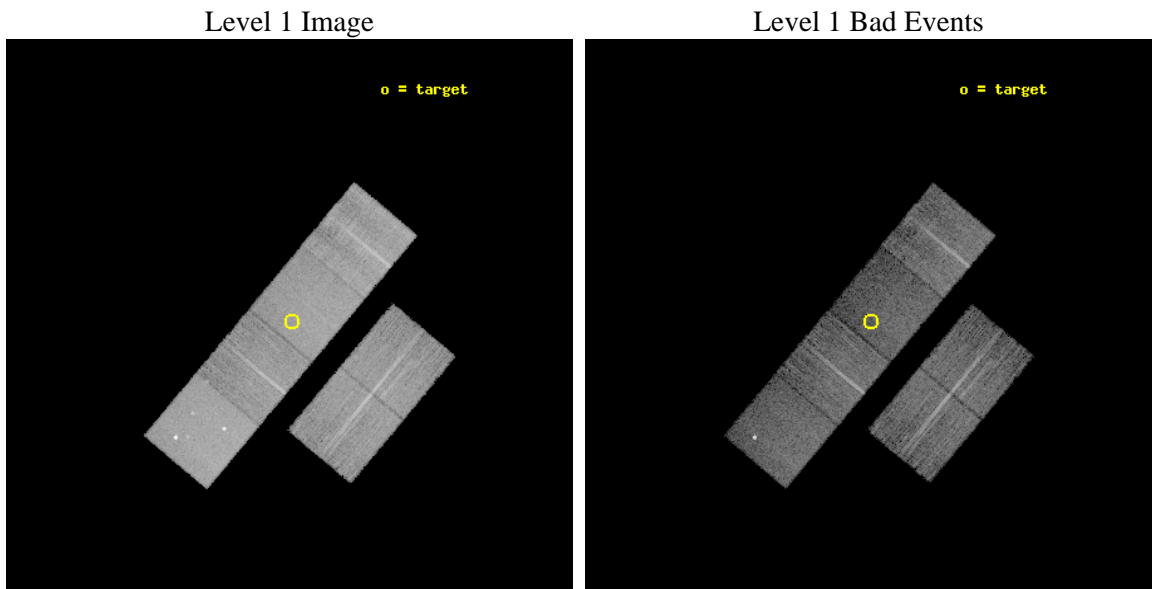
seq_num	900932	Sequence number
obs_id	11881	Observation id
title	GTO ChIcAGO: Chandra Identification of ASCA Galactic Objects	Propo
observer	Dr. Stephen Murray	Principal investigator
object	AX J151005-5824	Source name
dtcycle	0	
cycle	P	events from which exps? Prim/Second/Both
ra_targ	227.525	Observer's specified target RA [deg]
dec_targ	-58.415	Observer's specified target Dec [deg]
ra_nom	227.53371085395	Nominal RA [deg]
dec_nom	-58.416524524178	Nominal Dec [deg]
roll_nom	309.95559959347	Nominal Roll [deg]
revision	3	Processing version of data
ontime	10044.79996264	Sum of GTIs [s]
livetime	9917.6066572605	Livetime [s]
ontime2	10044.79996264	Sum of GTIs [s]
ontime3	10044.79996264	Sum of GTIs [s]
ontime5	10044.79996264	Sum of GTIs [s]
ontime6	10044.79996264	Sum of GTIs [s]
ontime7	10044.79996264	Sum of GTIs [s]
ontime8	10044.79996264	Sum of GTIs [s]
l2events	124919	Number of level 2 events



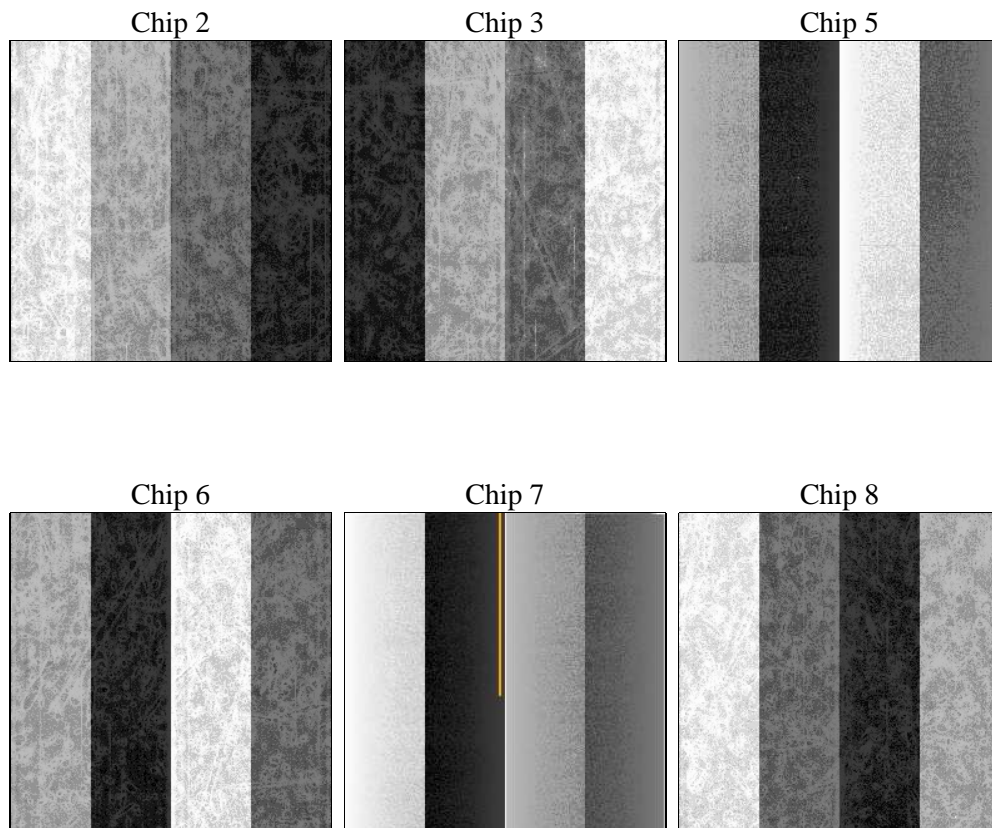
2 OBI

2.1 OBI

2.1.1 Images



2.1.2 Bias



2.1.3 Parameters

obi_num	0	Obi number	sched_exp_time	10000.000000	[s] Scheduled observation exposure time
ascdsver	8.4.5	Processing system revision	ontime	10044.79996264	Sum of GTIs [s]
caldsver	4.5.0	 	ontime2	10044.79996264	Sum of GTIs [s]
date	2012-06-28T12:56:03	Date and time of file creation	ontime3	10044.79996264	Sum of GTIs [s]
revision	3	Processing version of data	ontime5	10044.79996264	Sum of GTIs [s]
			ontime6	10044.79996264	Sum of GTIs [s]
			ontime7	10044.79996264	Sum of GTIs [s]
			ontime8	10044.79996264	Sum of GTIs [s]
			l1events	541444	Number of level 1 events

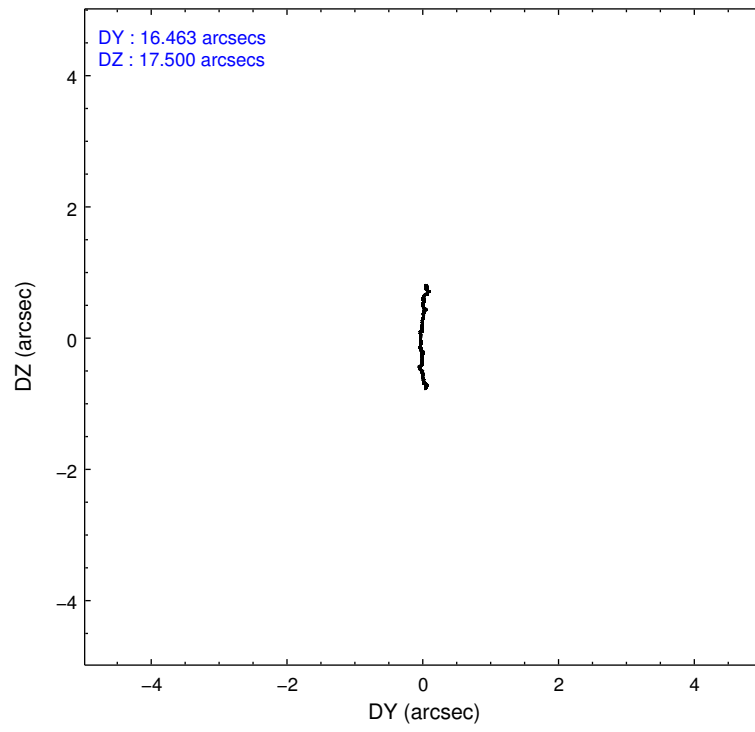
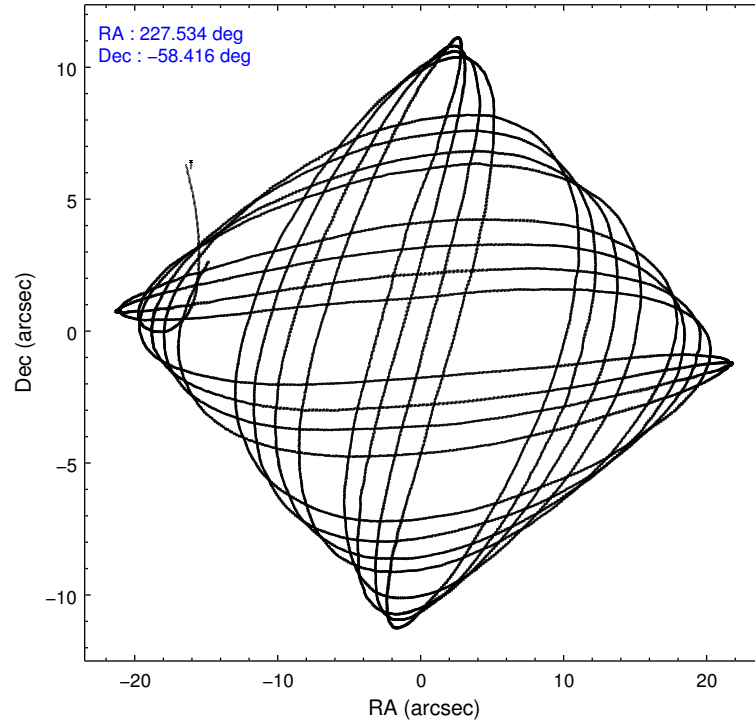
2.1.4 Events

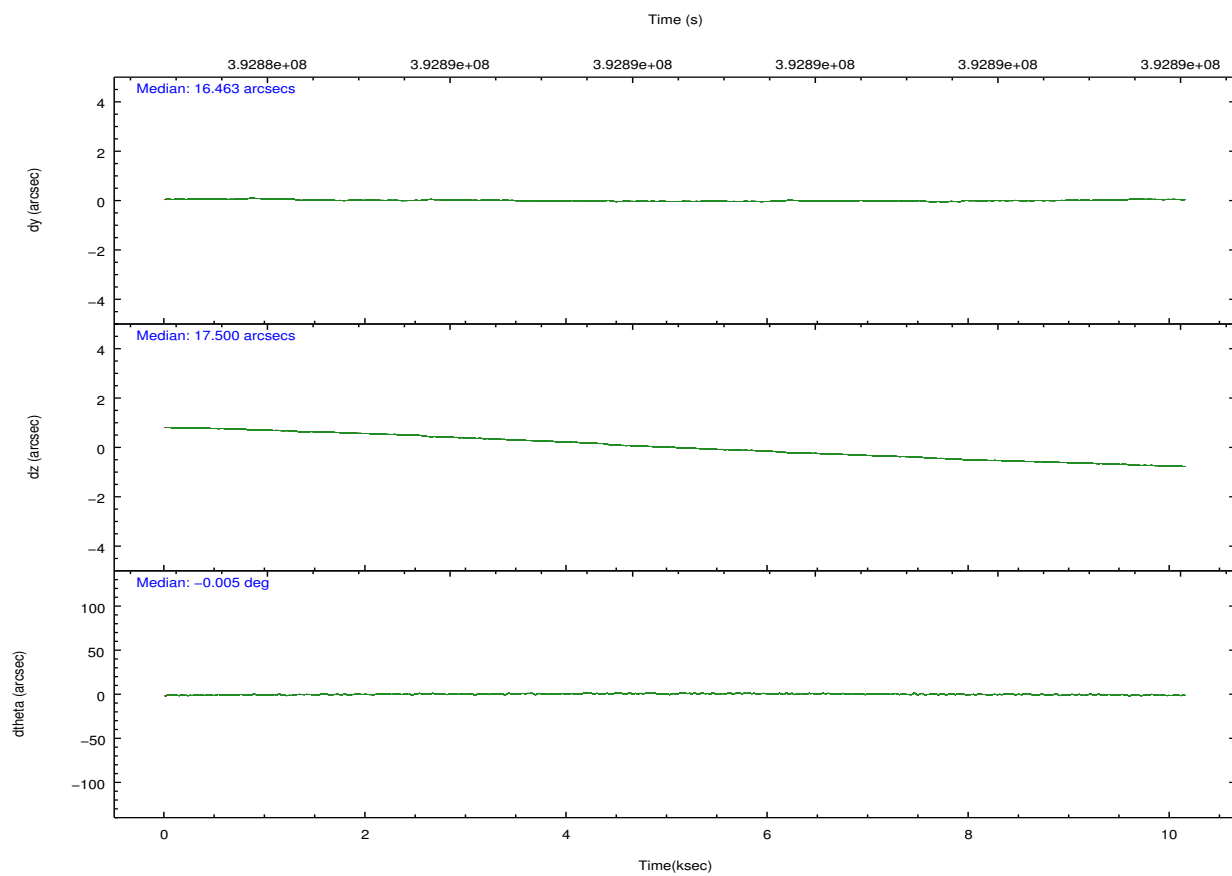
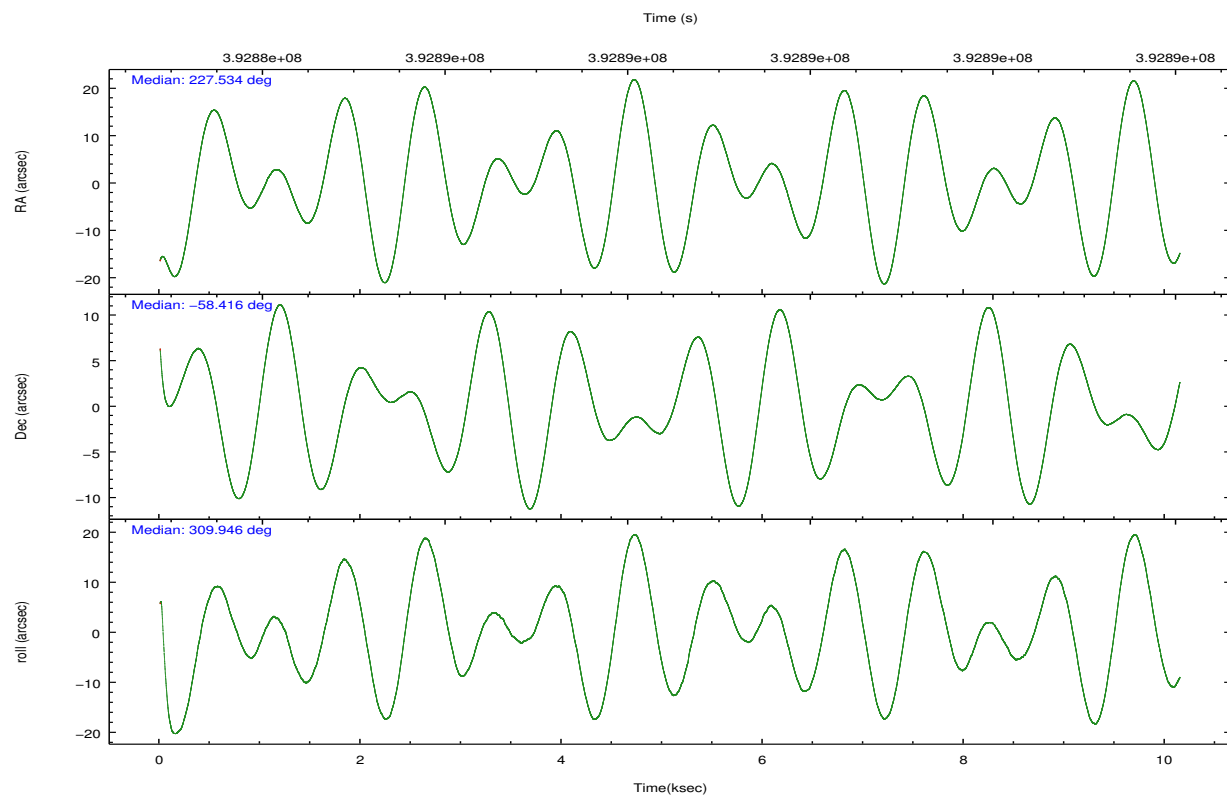
	ccd 2	ccd 3	ccd 5	ccd 6	ccd 7	ccd 8		ccd 2	ccd 3	ccd 5	ccd 6	ccd 7	ccd 8
level 1 events	79708	74615	118365	75725	91796	101235	grade 0 events	3127	2798	6240	3186	3861	8006
rejected events	71263	66793	59905	66997	49777	74923		3%	3%	5%	4%	4%	7%
rejected %	89%	89%	50%	88%	54%	74%	grade 1 events	54	52	209	55	138	85
								0%	0%	0%	0%	0%	0%
							grade 2 events	2043	1751	17868	1968	8537	6006
								2%	2%	15%	2%	9%	5%
							grade 3 events	817	837	2274	894	3772	2760
								1%	1%	1%	1%	4%	2%
							grade 4 events	869	884	2101	824	3765	2544
								1%	1%	1%	1%	4%	2%
							grade 5 events	3038	3425	8920	3325	9506	4981
								3%	4%	7%	4%	10%	4%
							grade 6 events	1590	1552	30000	1858	22096	7044
								1%	2%	25%	2%	24%	6%
							grade 7 events	68170	63316	50753	63615	40121	69809
								85%	84%	42%	84%	43%	68%

2.2 Compared Parameters

Parameter	Planned	Actual	Parameter	Planned	Actual
Instrument	ACIS	ACIS	Obspar format version number	7	7
Detector	ACIS-235678	ACIS-235678	Obspar file type	PREDICTED	ACTUAL
Grating	NONE	NONE	Obspar update status	NONE	UPDATED
Data mode	FAINT	FAINT	CCD I0 on	N	N
Observation mode	POINTING	POINTING	CCD I1 on	N	N
[deg] Pointing RA	227.484514	227.5337108539521	CCD I2 on	O2	Y
[deg] Pointing Dec	-58.407508	-58.41652452417751	CCD I3 on	O3	Y
[deg] Pointing Roll	309.757033	309.9555995934744	CCD S0 on	N	N
[mm] SIM focus pos	-0.684267	-0.6828225247311905	CCD S1 on	O1	Y
[mm] SIM defocus	0	0.001444936568705701	CCD S2 on	O5	Y
[mm] SIM translation stage pos	-190.132523	-190.1425803651734	CCD S3 on	Y	Y
[mm] SIM translation stage offset	0	0.01005778216563158	CCD S4 on	O4	Y
[s] Observation start time (MET)	392883549.184000	392882331.06972	CCD S5 on	N	N
Observation start date	2010-06-14T06:18:03	2010-06-14T05:58:51	Number of optional ACIS chips dropped	0	0
[s] Observation end time (MET)	392893549.184000	392894953.43286	On-chip summing requested	N	N
Observation end date	2010-06-14T09:04:43	2010-06-14T09:29:13	Subarray requested	NONE	NONE
Read mode	TIMED	TIMED	Alternating exposures requested	N	N
			[s] Primary exposure time	0.000000	3.2

2.3 Aspect



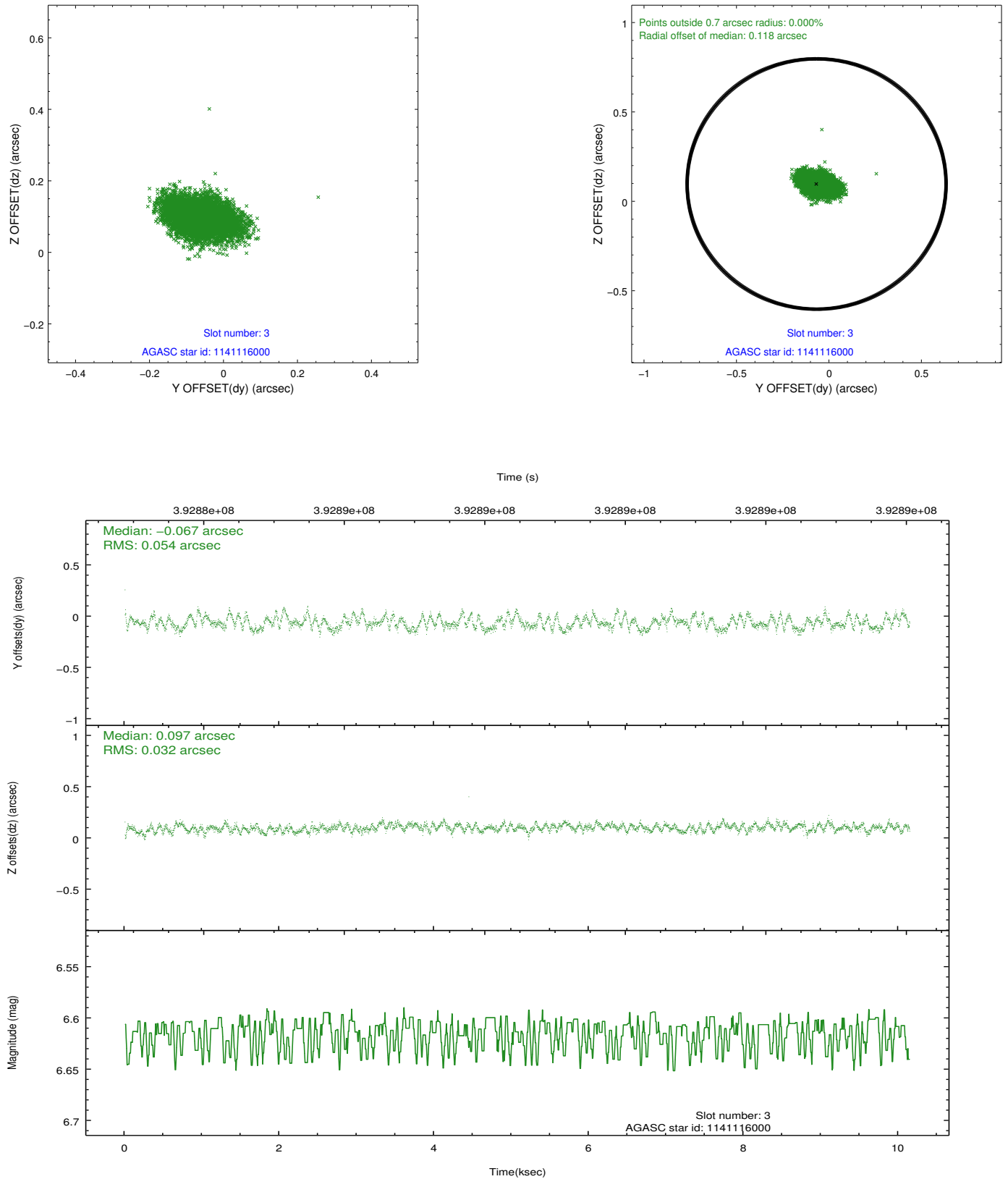


Slot Statistics

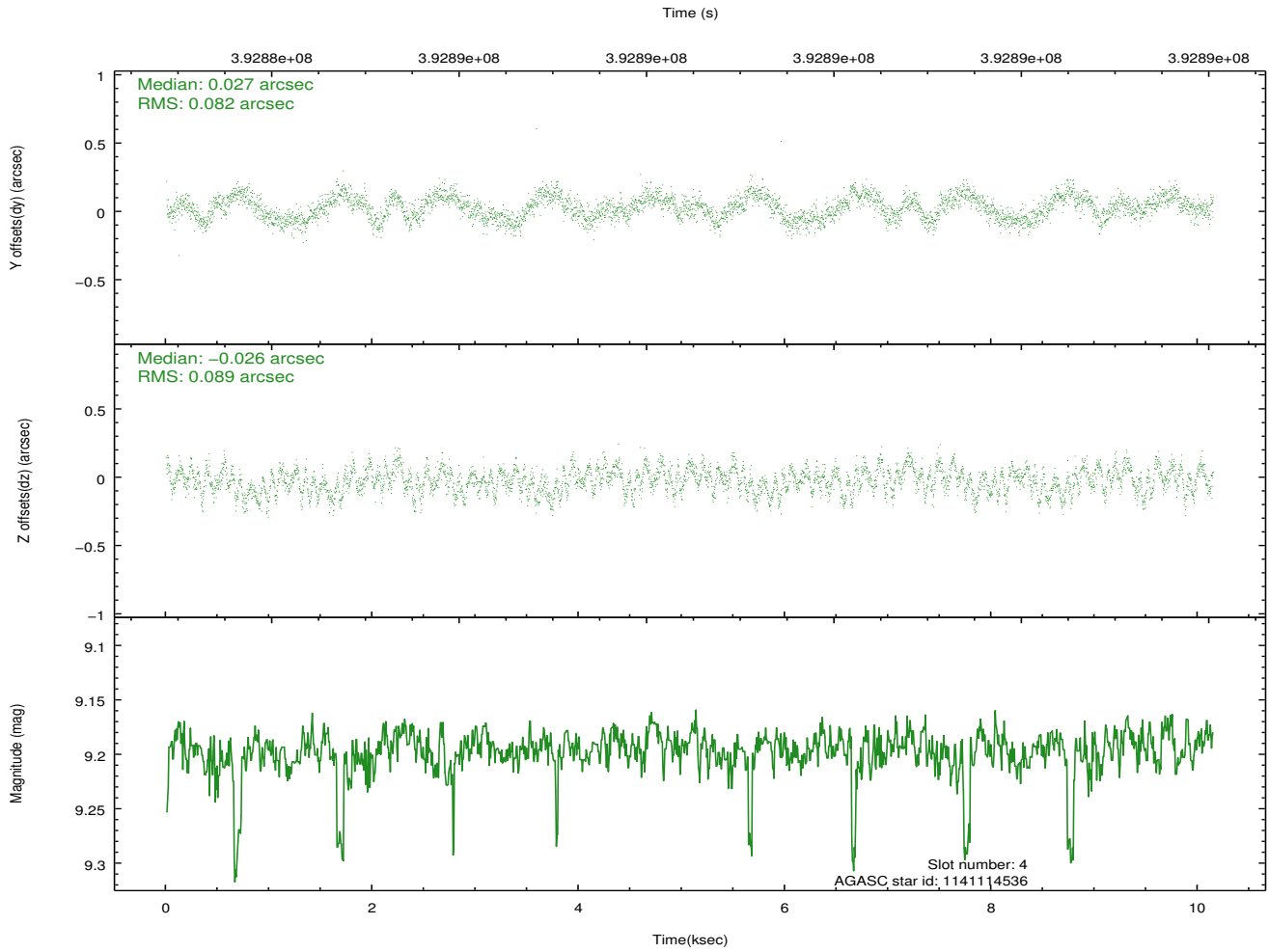
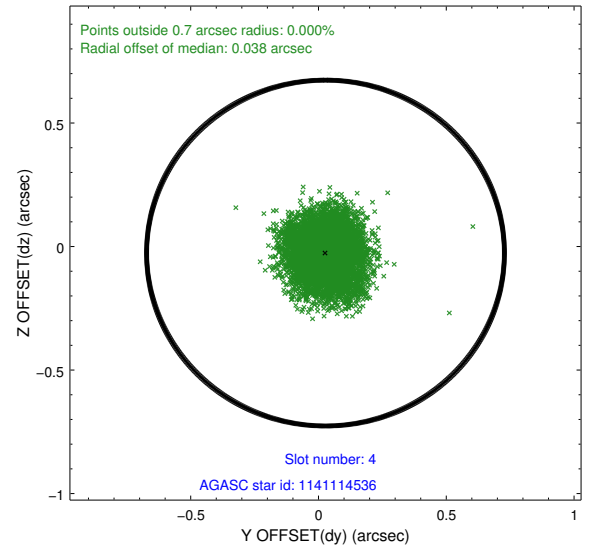
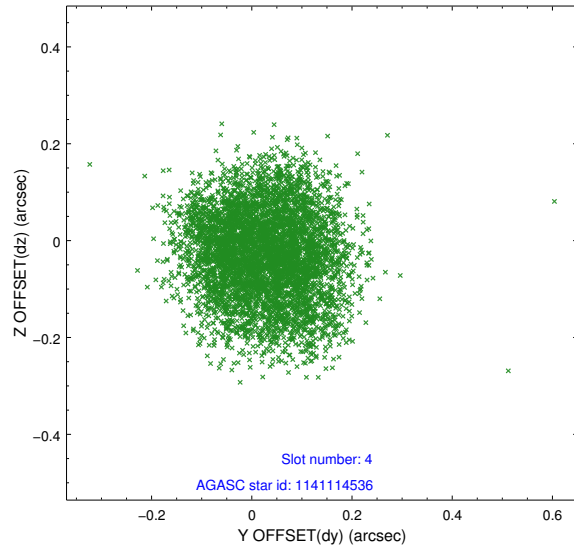
slot	status	id	mag	n_pts	med_dy	med_dz	dr1	dr2	ra	dec	mean_y	mean_z
0	FID	ACIS-S-1	6.97	2475	0.108	-0.072	0.021	0.038	0.000000	0.000000	926.66	-1734.62
1	FID	ACIS-S-5	7.01	2473	-0.120	0.083	0.012	0.019	0.000000	0.000000	-1822.27	162.56
2	FID	ACIS-S-6	7.12	2475	-0.007	0.000	0.028	0.048	0.000000	0.000000	391.54	807.03
3	GUIDE	1141116000	6.61	4949	-0.067	0.097	0.066	0.108	227.224564	-59.142142	1727.74	-2060.66
4	GUIDE	1141114536	9.20	4918	0.027	-0.026	0.131	0.199	227.067565	-58.699394	312.08	-1273.33
5	GUIDE	1141114296	9.19	4882	0.011	0.055	0.101	0.159	227.097332	-58.697525	341.82	-1225.69
6	GUIDE	1141116568	8.53	4949	0.142	0.078	0.064	0.102	228.578452	-58.520066	1640.06	1311.32
7	GUIDE	1141113152	8.73	4946	-0.114	-0.201	0.092	0.135	228.952453	-58.305202	1516.08	2350.95

2.4 Star Slots

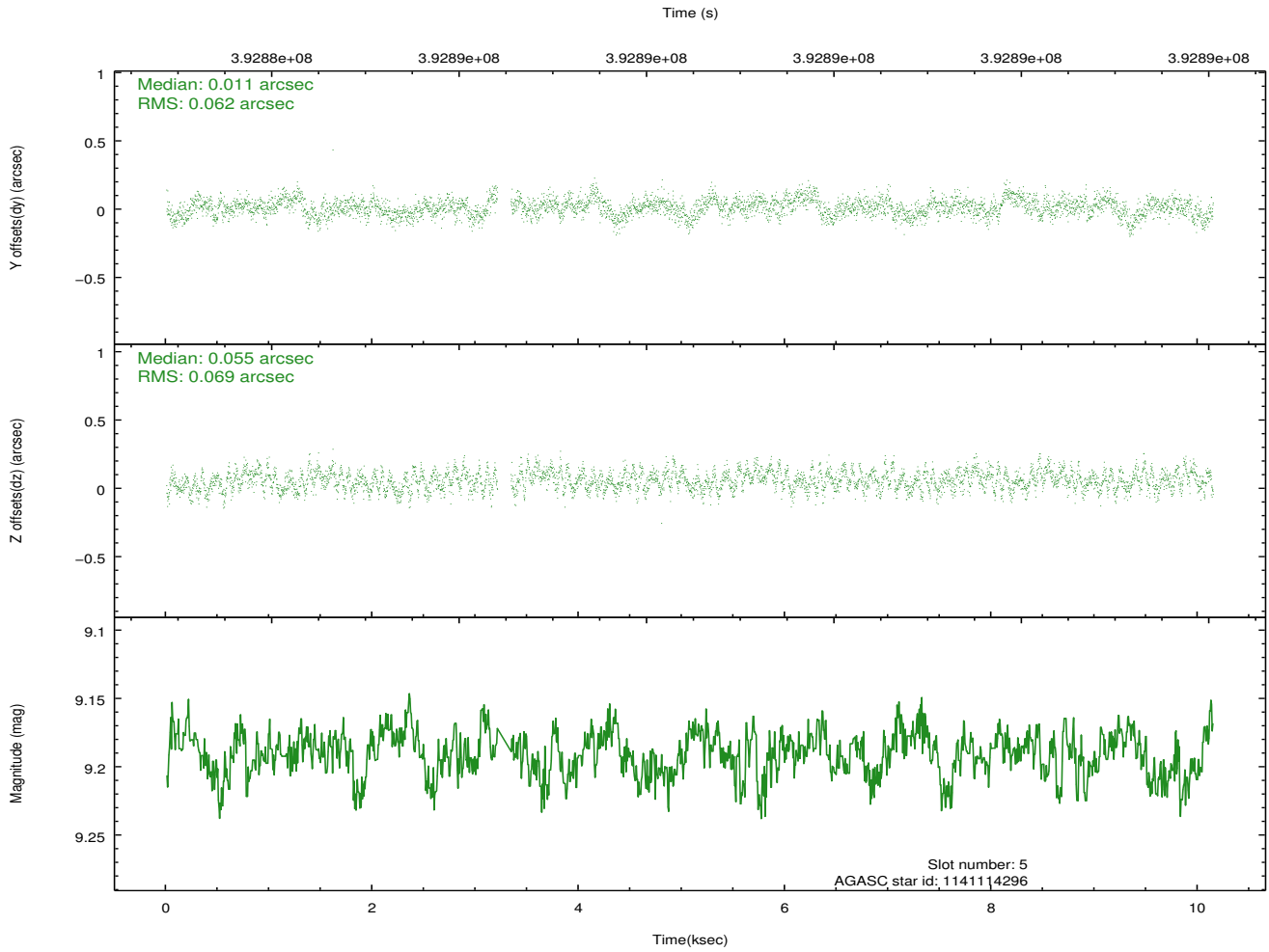
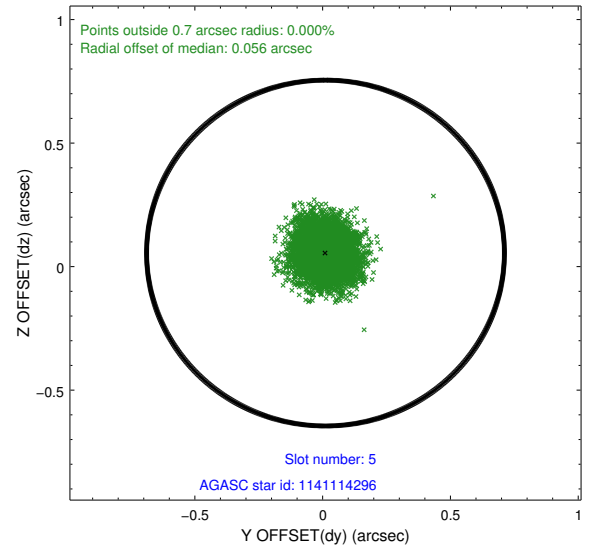
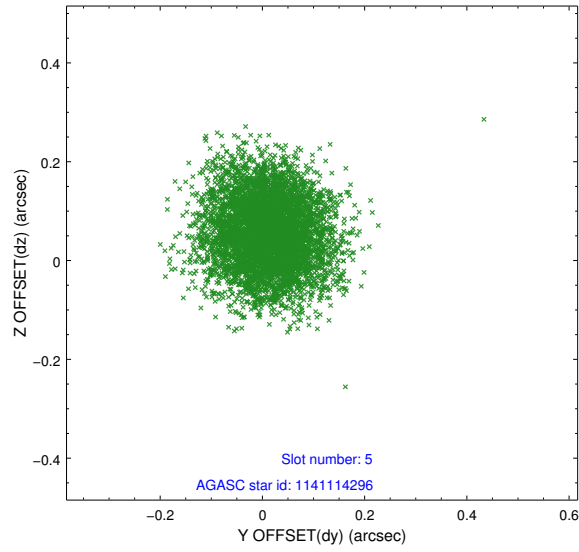
2.4.1 Slot 3



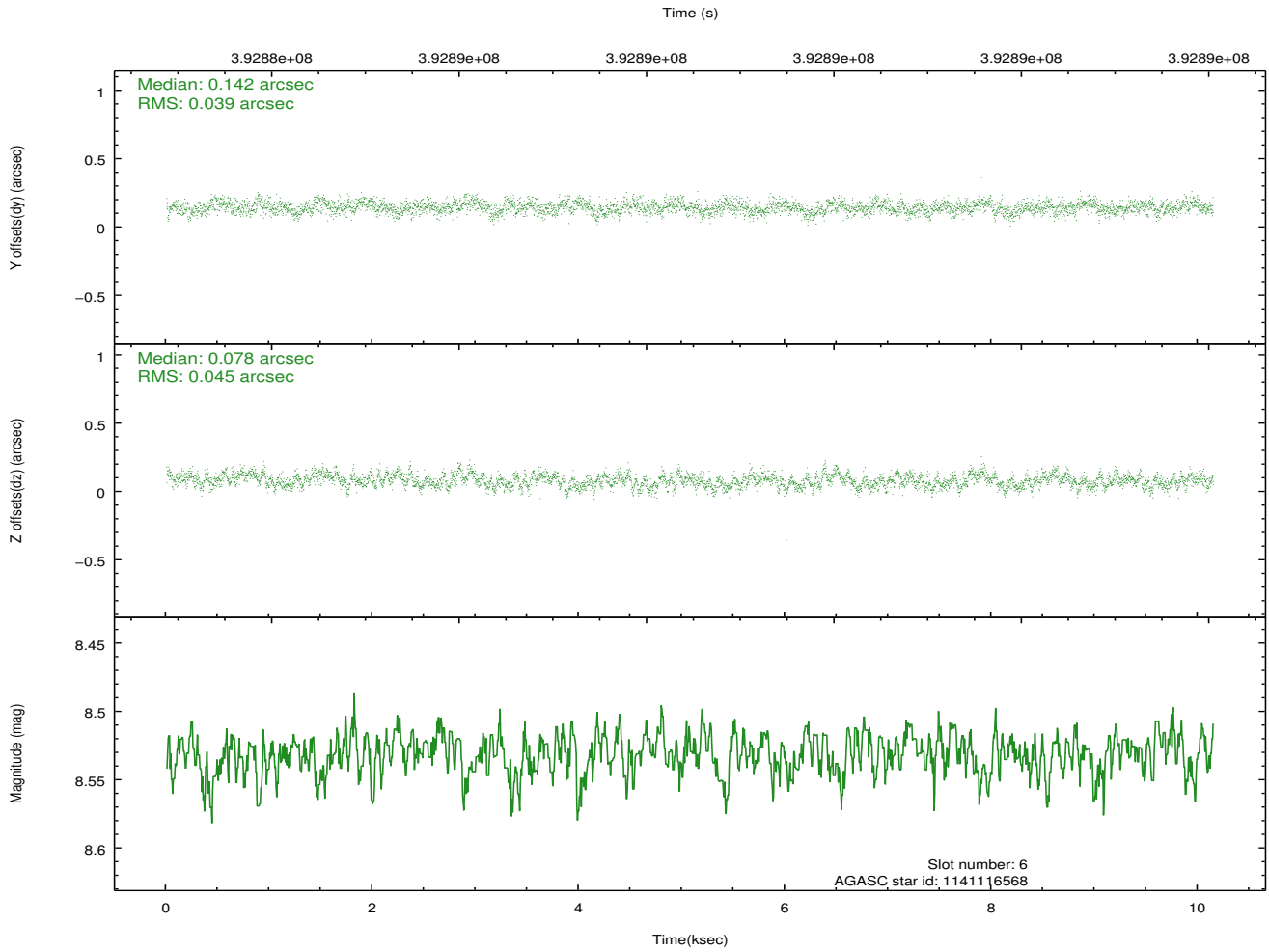
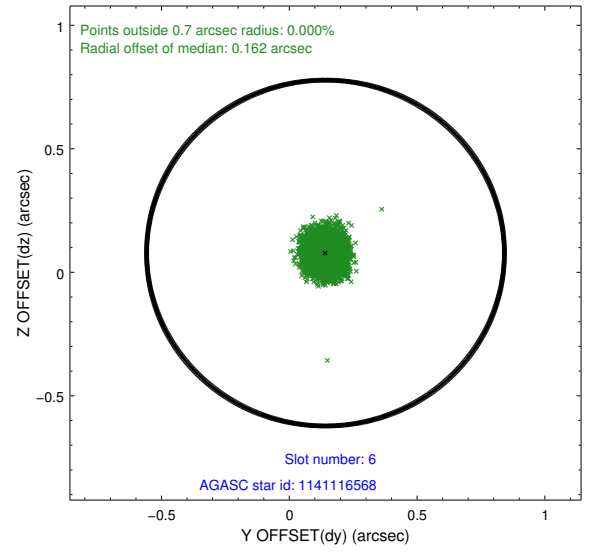
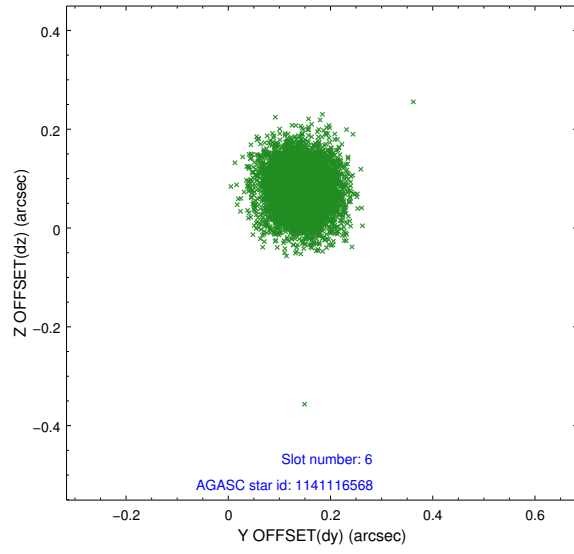
2.4.2 Slot 4



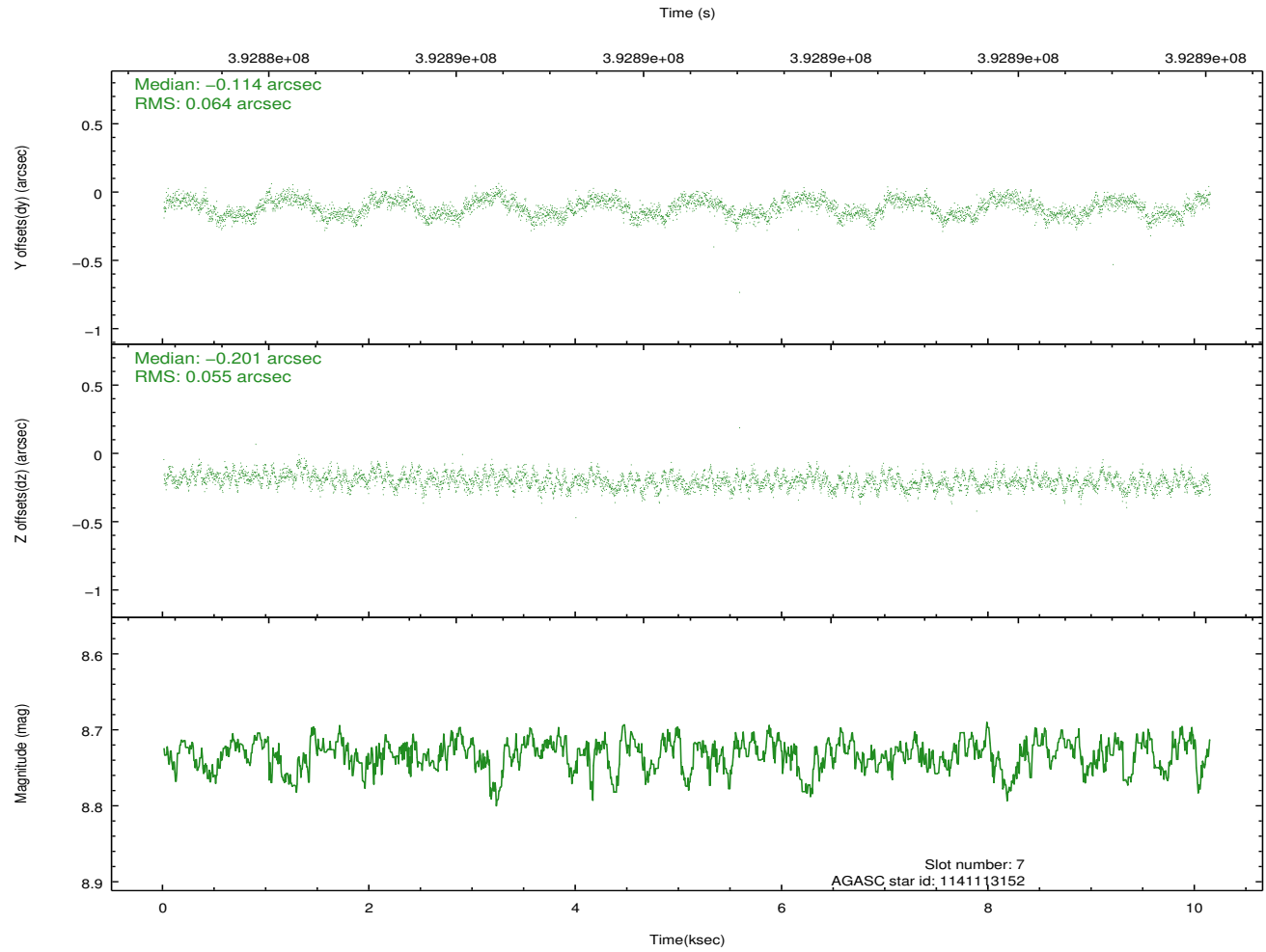
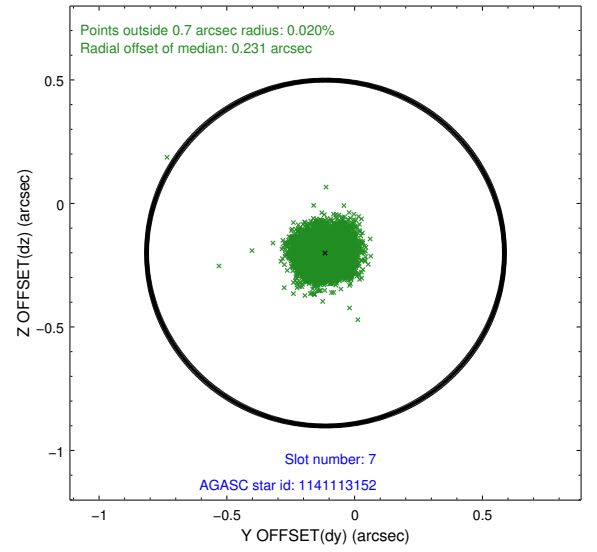
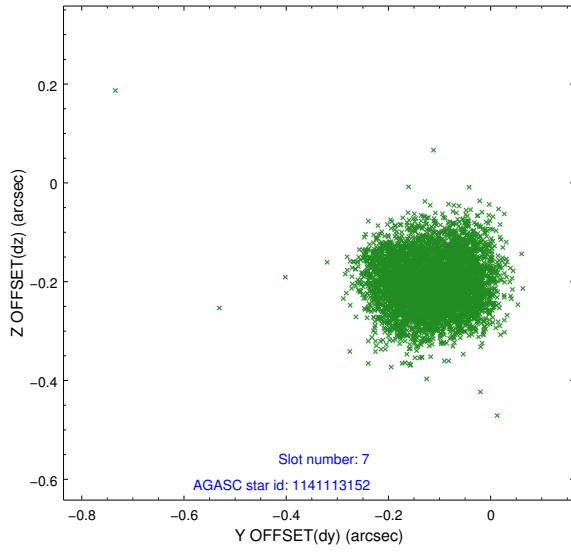
2.4.3 Slot 5



2.4.4 Slot 6

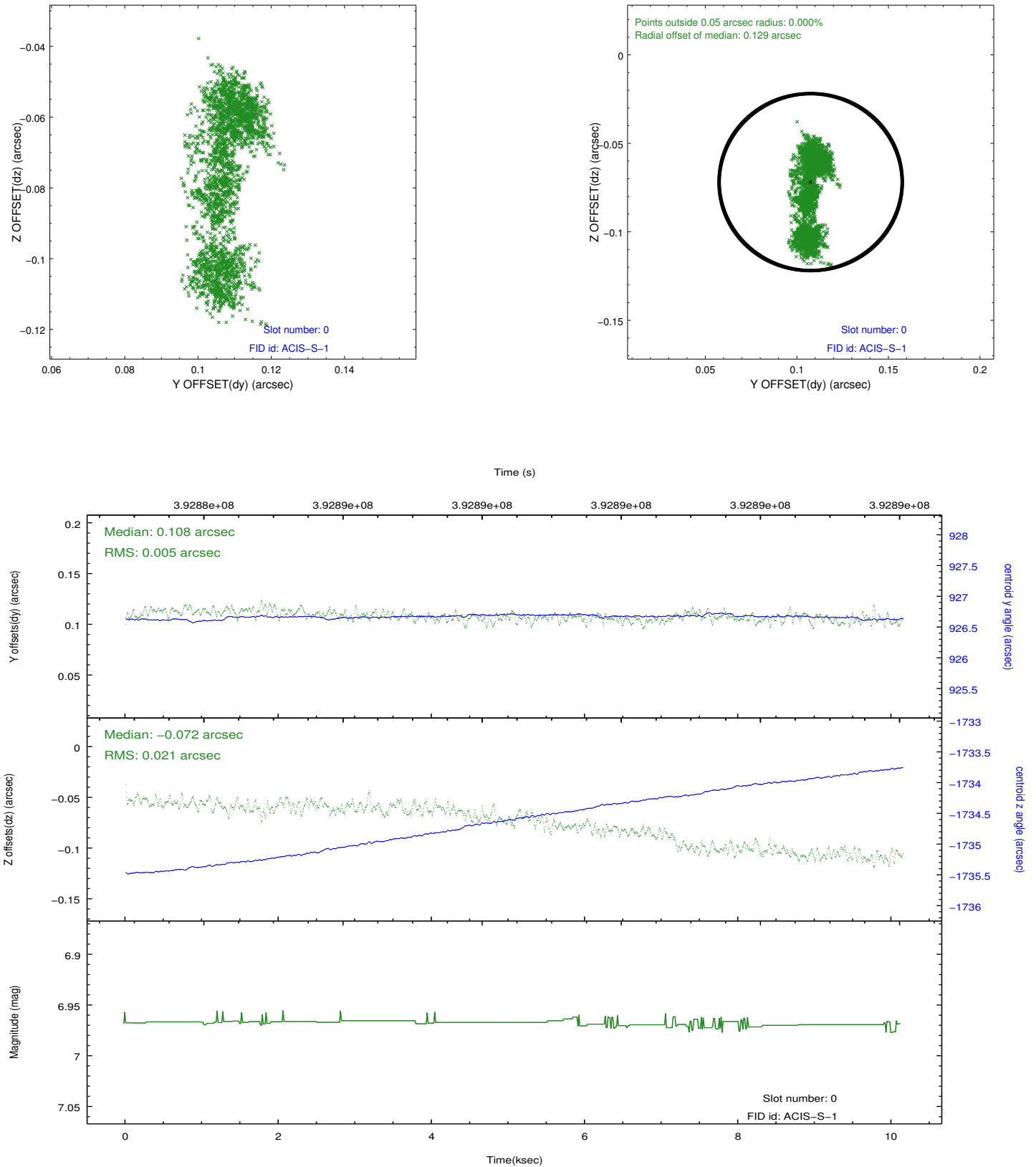


2.4.5 Slot 7

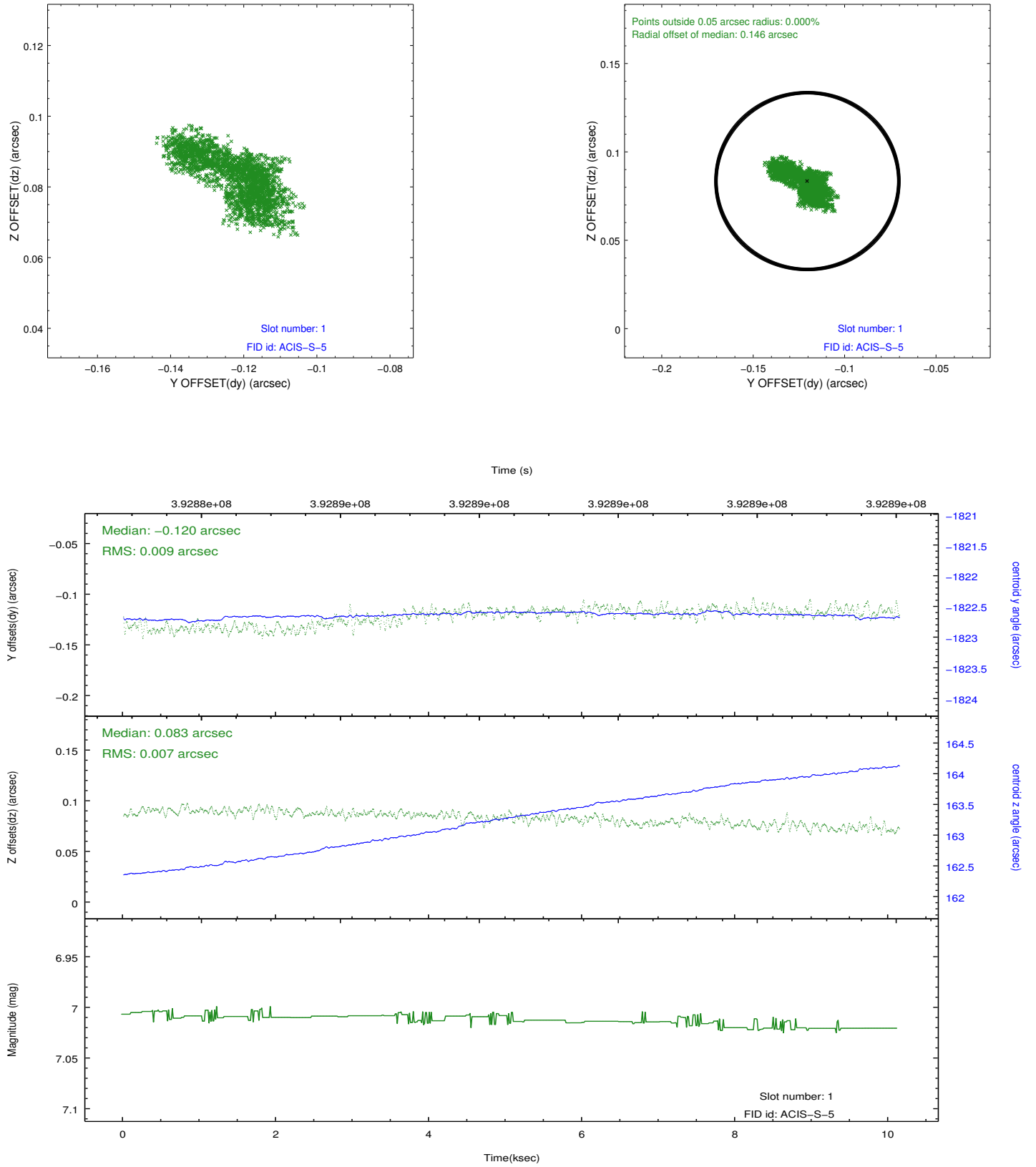


2.5 FID Slots

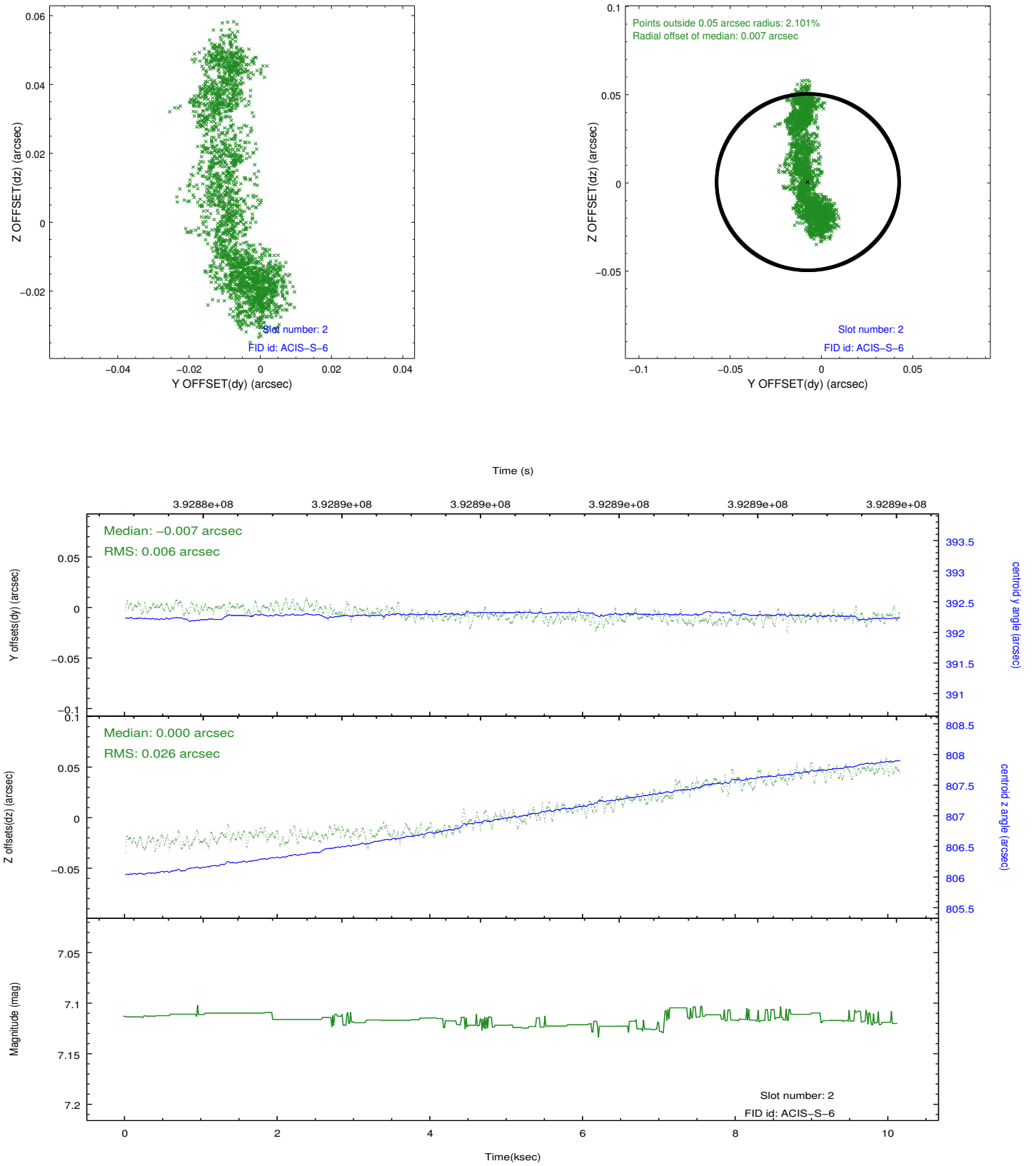
2.5.1 Slot 0



2.5.2 Slot 1



2.5.3 Slot 2



A Summary

A.1 Status

V&V Scientist	Jen Lauer
V&V Date (YYYY-MM-DD)	2012.07.05
V&V Edition	1
V&V Disposition and Status	OK
V&V Charge Time	10.04479996264

A.2 Comments

A spatial region of the original bias map for CCD = 2 suffered from anomalously high data values. Pixels in the event data that were bias-corrected by one of the original affected bias pixels may have an apparent energy shift. While the change in energy is expected to be small (~ 20 eV), it depends on many parameters that have not yet been fully explored for this bias anomaly. The bias map for CCD = 2 has been reconstructed for this processing to remove this anomaly using scaled data from a comparable bias map from another observation. The pixels affected by the anomaly are bounded by sky coords:
(227.36502, -58.67516), (227.36984, -58.67306), (227.19863, -58.56582), (227.19382, -58.56791)