

V&V Reference Report

L2 ASCDS Version : 8.4.5

Observation 11871 - L2 Version 2
Chandra X-Ray Center

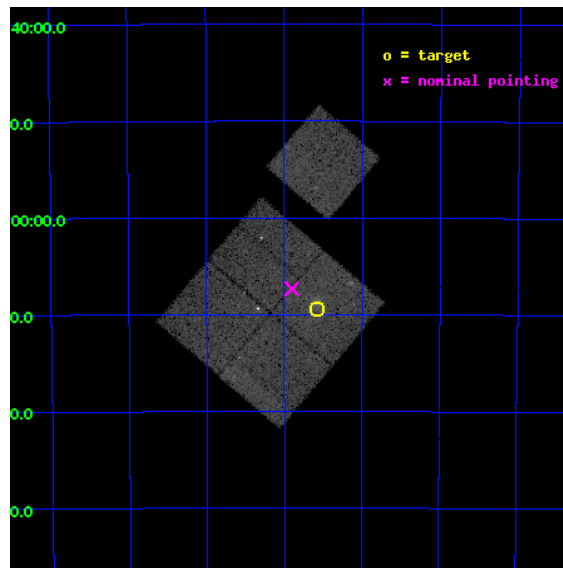
L2 Processing Date : Jun 16 2012

Contents

1	Front	2
2	OBI	3
2.1	OBI	3
2.1.1	Images	3
2.1.2	Bias	3
2.1.3	Parameters	4
2.1.4	Events	4
2.2	Compared Parameters	5
2.3	Aspect	6
2.4	Star Slots	9
2.4.1	Slot 3	9
2.4.2	Slot 4	10
2.4.3	Slot 5	11
2.4.4	Slot 6	12
2.4.5	Slot 7	13
2.5	FID Slots	14
2.5.1	Slot 0	14
2.5.2	Slot 1	15
2.5.3	Slot 2	16
A	Summary	17
A.1	Status	17
A.2	Comments	17

1 Front

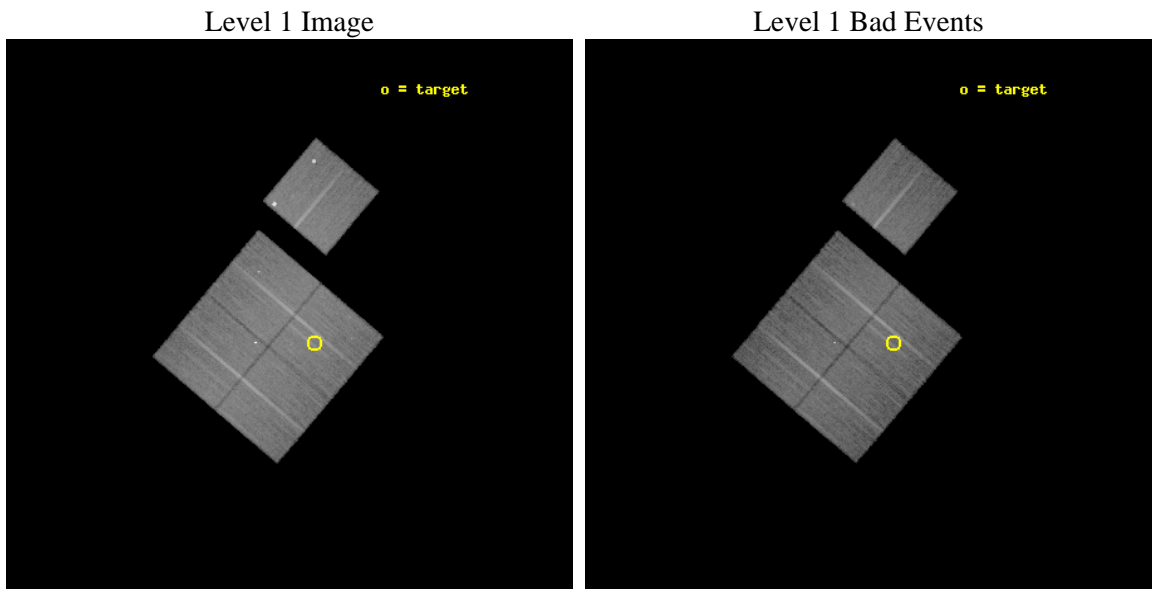
seq_num	800925	Sequence number
obs_id	11871	Observation id
title	A Chandra Study of a Complete Sample of SZE Selected Galaxy Clusters	
observer	Dr. Stephen Murray	Principal investigator
object	SPT0552-5709	Source name
dtcycle	0	
cycle	P	events from which exps? Prim/Second/Both
ra_targ	87.897083	Observer's specified target RA [deg]
dec_targ	-57.156	Observer's specified target Dec [deg]
ra_nom	87.975852339125	Nominal RA [deg]
dec_nom	-57.122327154793	Nominal Dec [deg]
roll_nom	40.302557343581	Nominal Roll [deg]
revision	2	Processing version of data
ontime	20040.992755115	Sum of GTIs [s]
livetime	19779.142430805	Livetime [s]
ontime0	20037.728634894	Sum of GTIs [s]
ontime1	20037.769664824	Sum of GTIs [s]
ontime2	20037.810744822	Sum of GTIs [s]
ontime3	20040.992755115	Sum of GTIs [s]
ontime6	20040.828595102	Sum of GTIs [s]
l2events	86847	Number of level 2 events



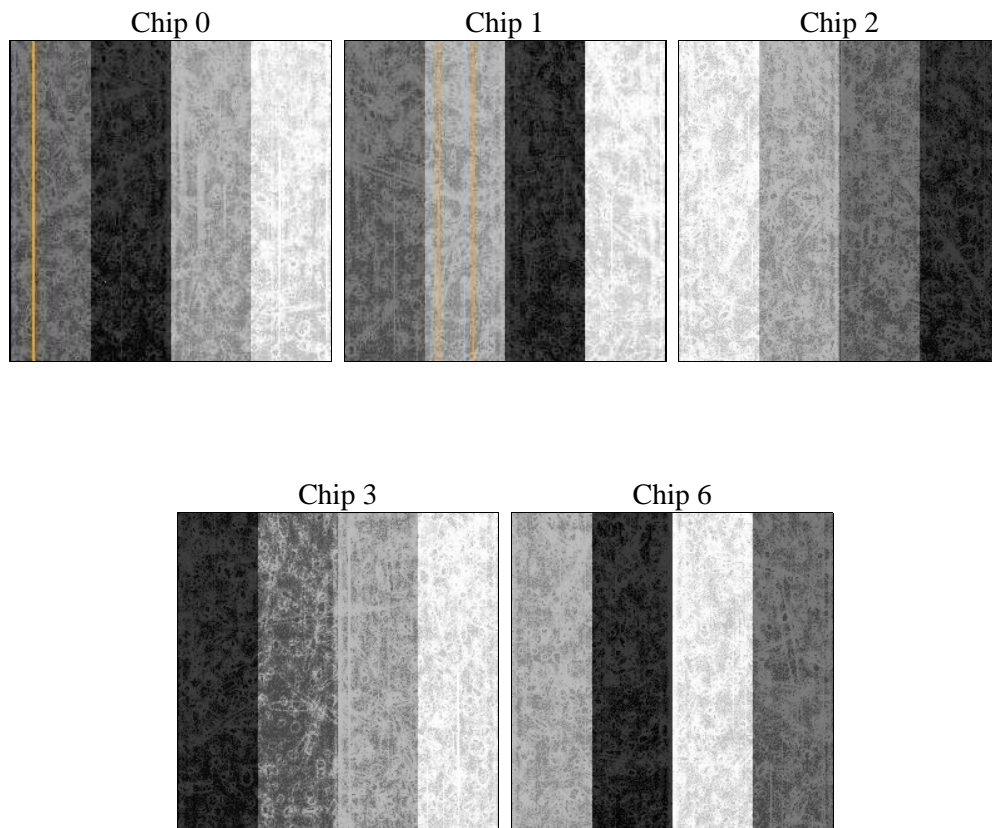
2 OBI

2.1 OBI

2.1.1 Images



2.1.2 Bias



2.1.3 Parameters

obi_num	0	Obi number	sched_exp_time	20000.000000	[s] Scheduled observation exposure time
ascdsver	8.4.5	Processing system revision	ontime	20040.992755115	Sum of GTIs [s]
caldsver	4.4.10	 	ontime0	20037.728634894	Sum of GTIs [s]
date	2012-06-16T15:28:57	Date and time of file creation	ontime1	20037.769664824	Sum of GTIs [s]
revision	2	Processing version of data	ontime2	20037.810744822	Sum of GTIs [s]
			ontime3	20040.992755115	Sum of GTIs [s]
			ontime6	20040.828595102	Sum of GTIs [s]
			l1events	886829	Number of level 1 events

2.1.4 Events

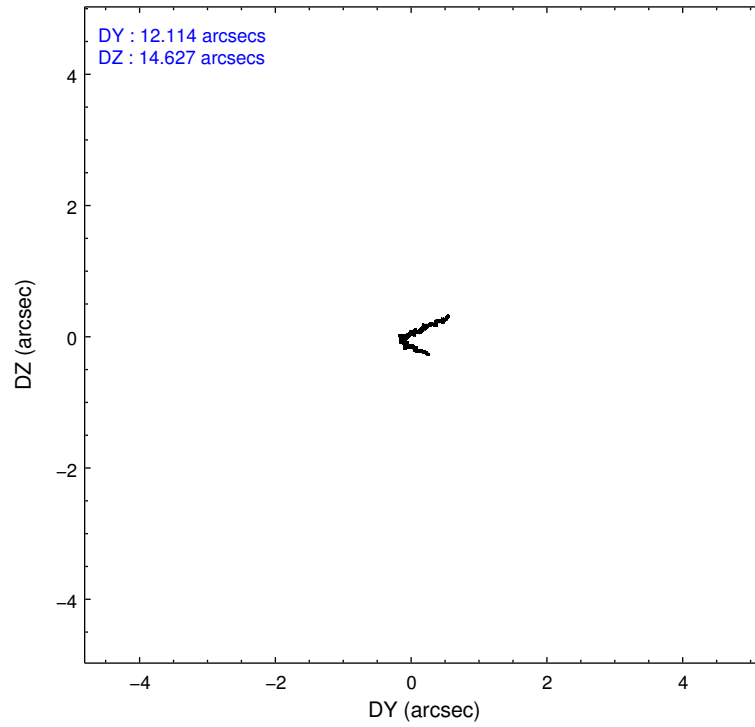
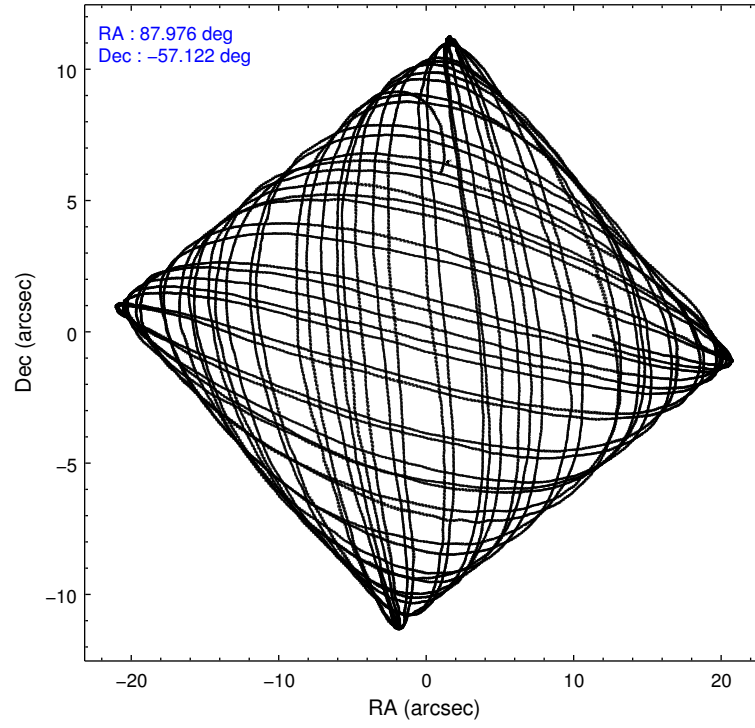
	ccd 0	ccd 1	ccd 2	ccd 3	ccd 6
level 1 events	172512	166910	180359	173736	193312
rejected events	146480	146585	161571	154261	156630
rejected %	84%	87%	89%	88%	81%

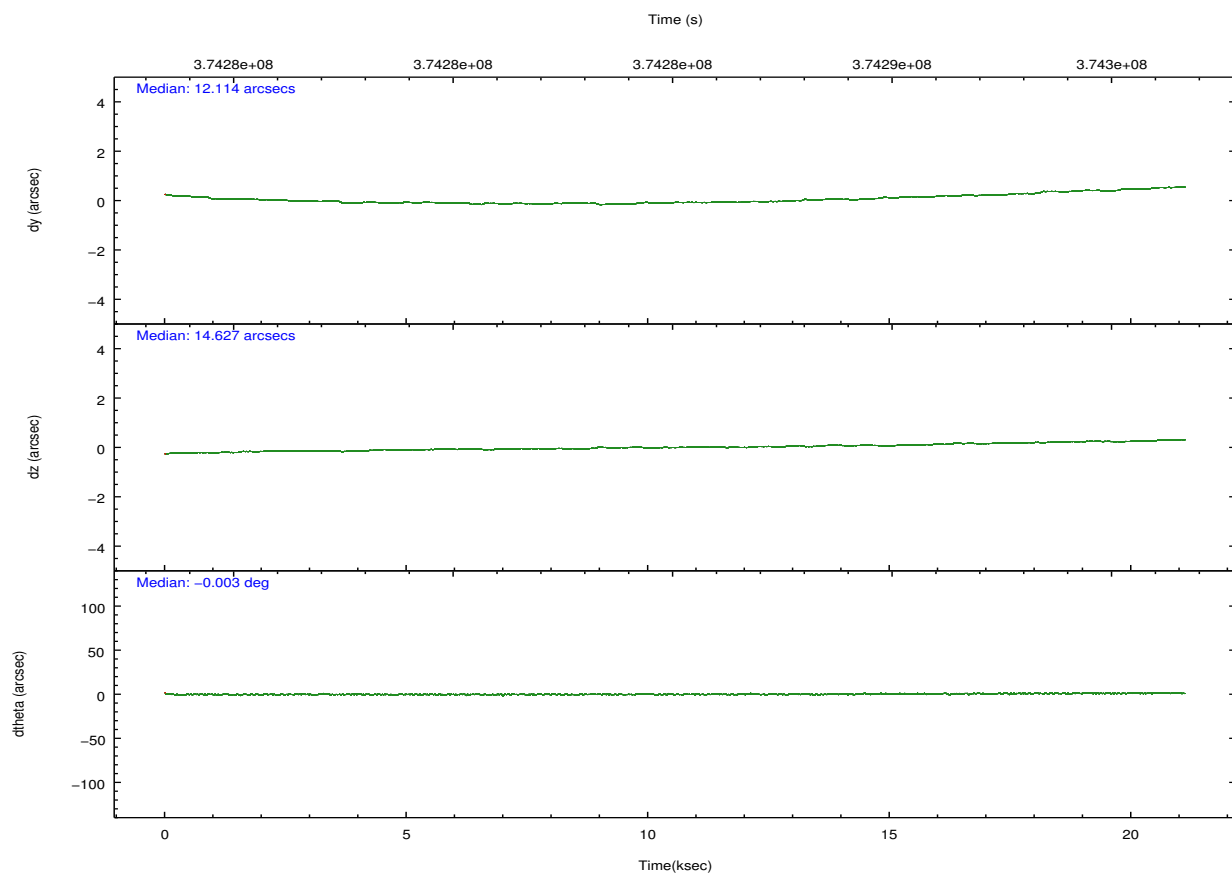
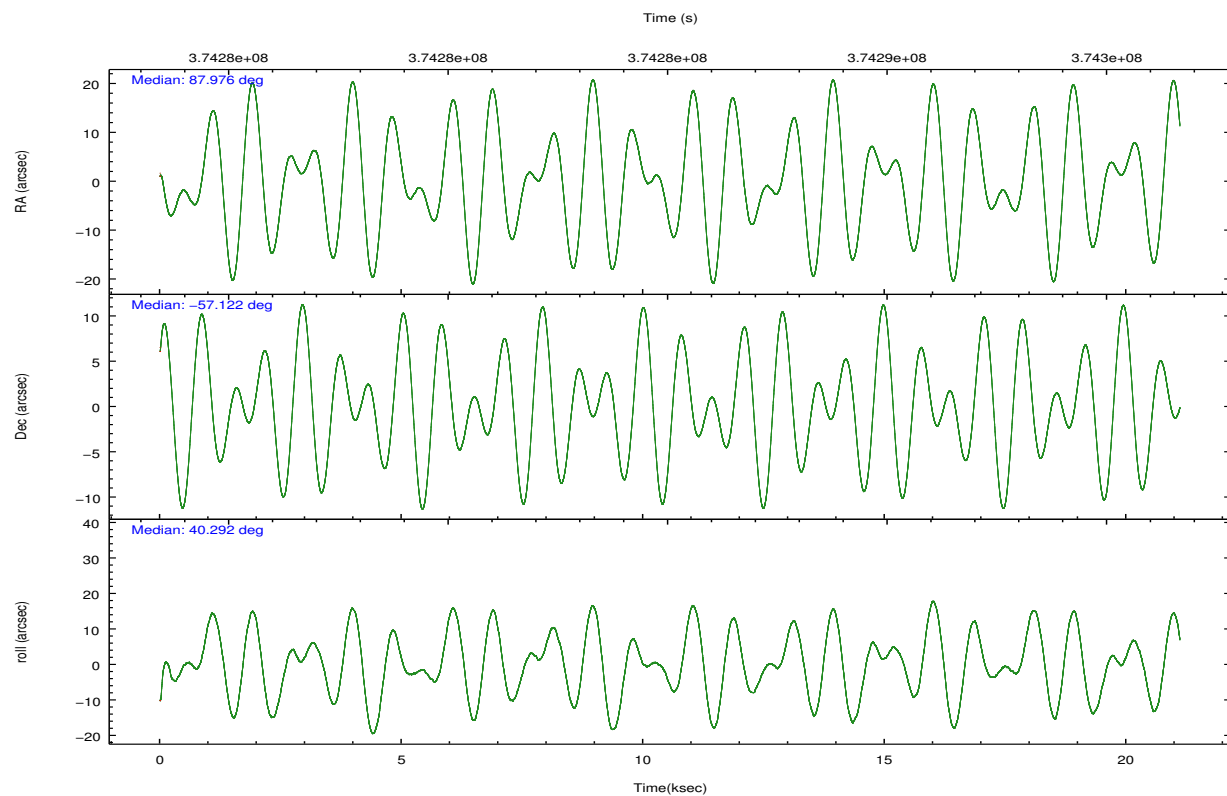
	ccd 0	ccd 1	ccd 2	ccd 3	ccd 6
grade 0 events	12633	7331	7088	8104	18520
	7%	4%	3%	4%	9%
grade 1 events	542	109	113	118	233
	0%	0%	0%	0%	0%
grade 2 events	5360	4645	4469	4007	10333
	3%	2%	2%	2%	5%
grade 3 events	2145	2084	1908	1920	2068
	1%	1%	1%	1%	1%
grade 4 events	2178	2137	1908	1946	1898
	1%	1%	1%	1%	0%
grade 5 events	6643	7079	6170	7416	7196
	3%	4%	3%	4%	3%
grade 6 events	3726	4133	3423	3507	3883
	2%	2%	1%	2%	2%
grade 7 events	139285	139392	155280	146718	149181
	80%	83%	86%	84%	77%

2.2 Compared Parameters

Parameter	Planned	Actual	Parameter	Planned	Actual
Instrument	ACIS	ACIS	Obspar format version number	7	7
Detector	ACIS-01236	ACIS-01236	Obspar file type	PREDICTED	ACTUAL
Grating	NONE	NONE	Obspar update status	NONE	UPDATED
Data mode	VFAINT	VFAINT	Number of optional ACIS chips dropped	0	0
Observation mode	POINTING	POINTING	On-chip summing requested	N	N
[deg] Pointing RA	87.958944	87.97585233912483	Subarray requested	NONE	NONE
[deg] Pointing Dec	-57.148259	-57.12232715479263	Alternating exposures requested	N	N
[deg] Pointing Roll	40.079672	40.30255734358087	[s] Primary exposure time	0.000000	3.1
[mm] SIM focus pos	-0.782348	-0.7809083437167272			
[mm] SIM defocus	0	0.001439871863259334			
[mm] SIM translation stage pos	-225.840463	-225.8433433320239			
[mm] SIM translation stage offset	-7.752	-7.749109670905796			
[s] Observation start time (MET)	374275618.184000	374273689.33873			
Observation start date	2009-11-10T21:25:52	2009-11-10T20:54:49			
[s] Observation end time (MET)	374295618.184000	374296397.70237			
Observation end date	2009-11-11T02:59:12	2009-11-11T03:13:17			
Read mode	TIMED	TIMED			

2.3 Aspect



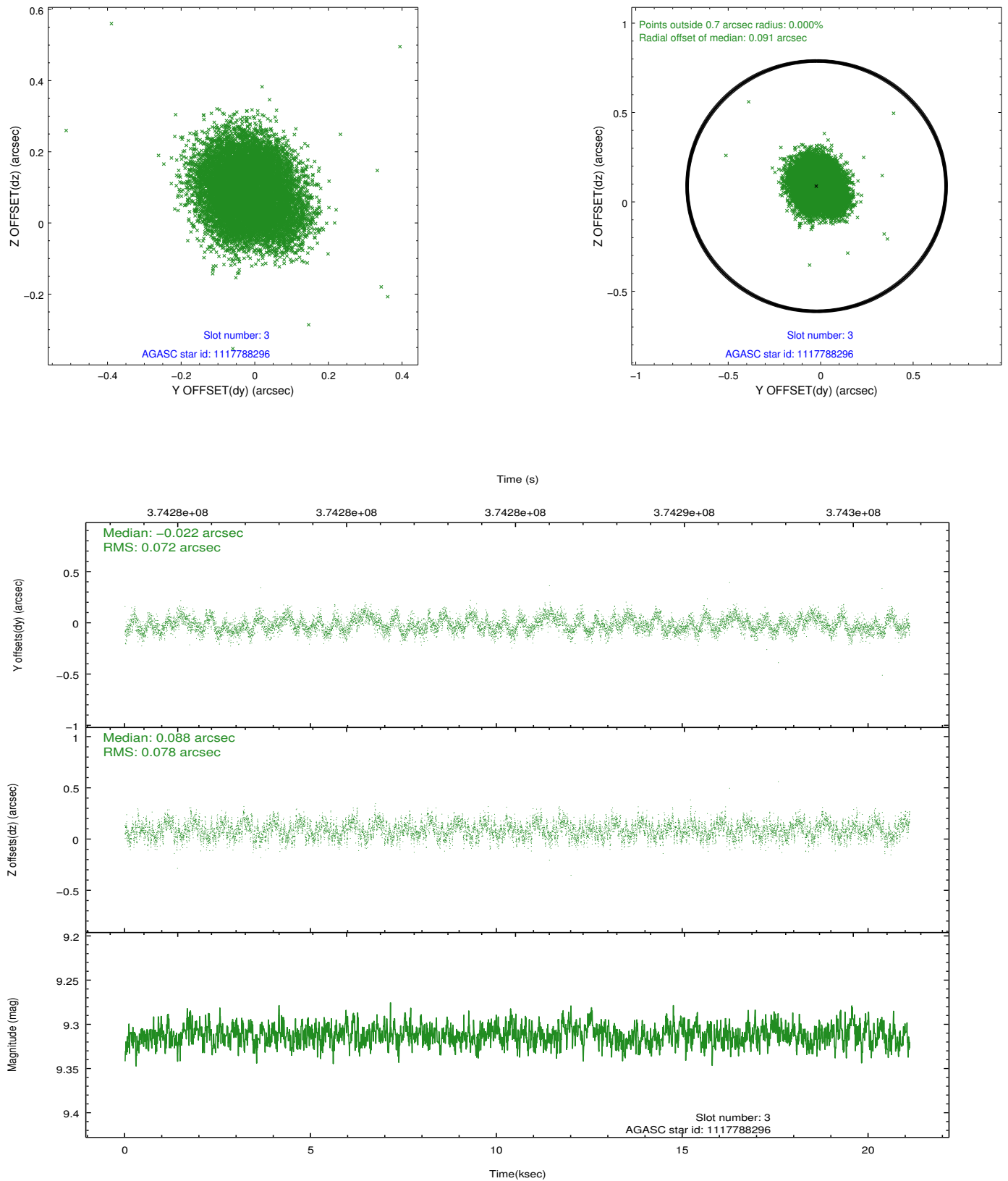


Slot Statistics

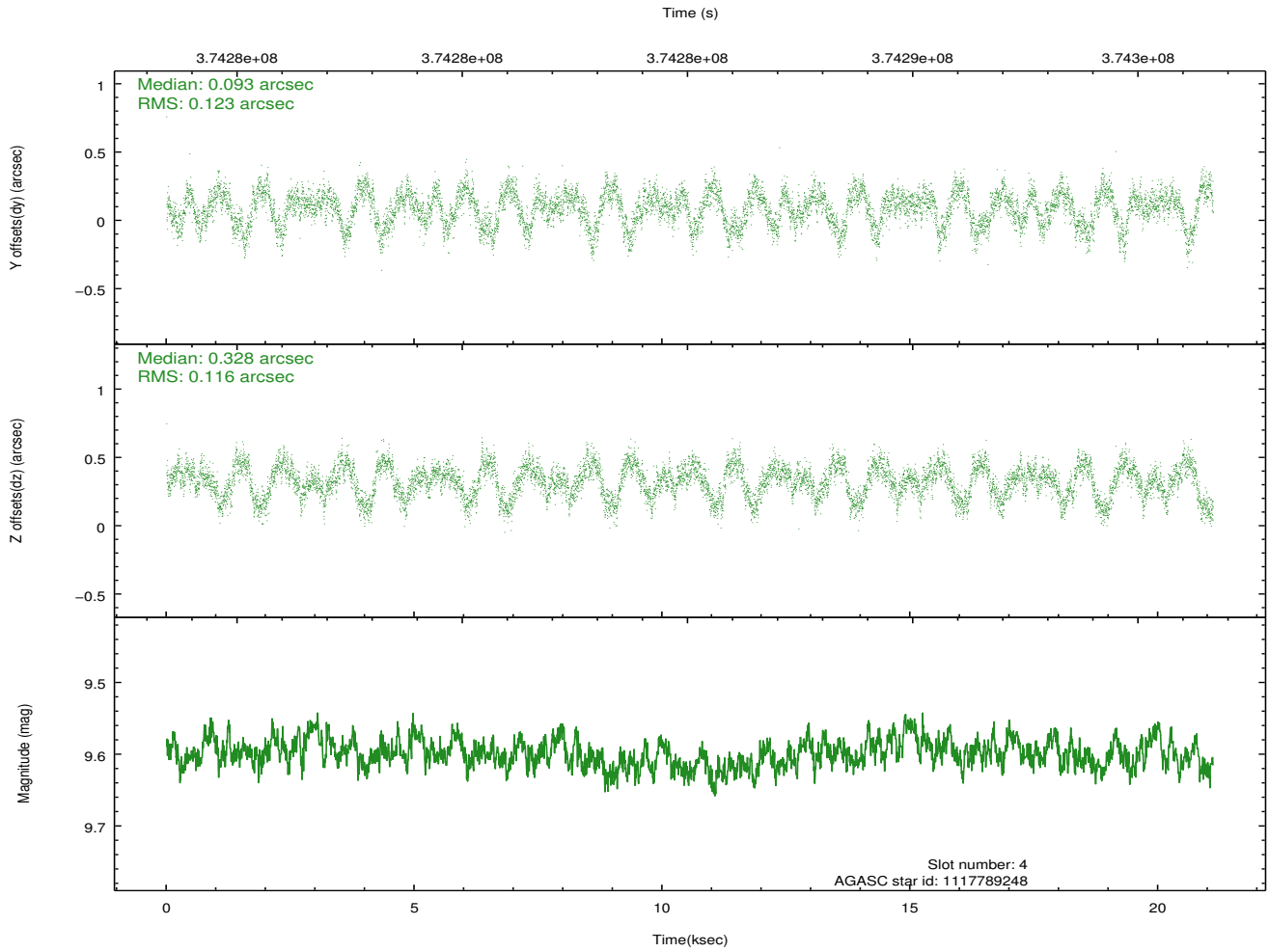
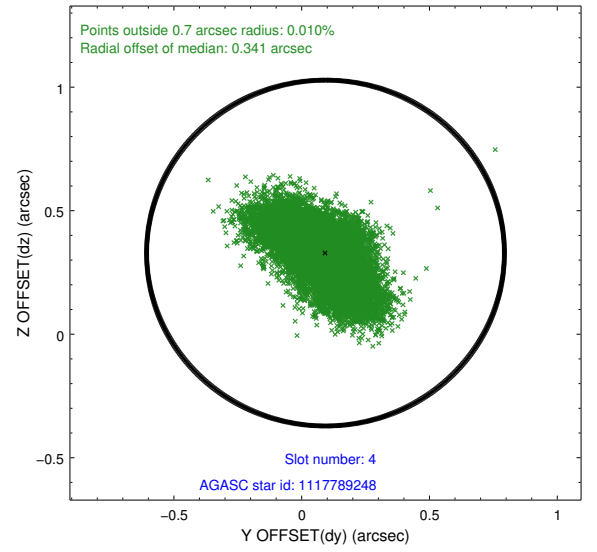
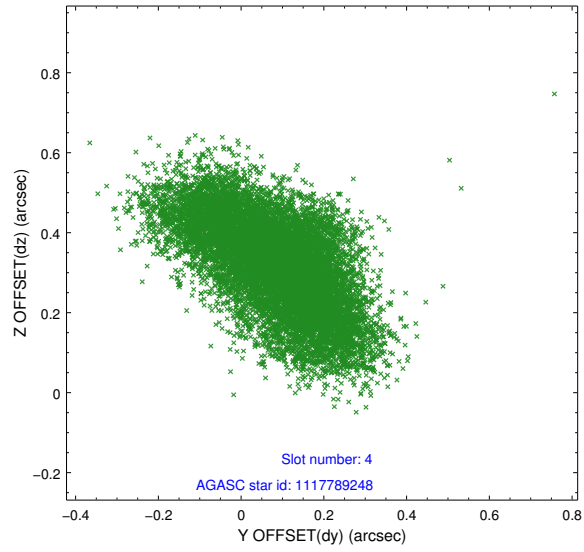
slot	status	id	mag	n_pts	med_dy	med_dz	dr1	dr2	ra	dec	mean_y	mean_z
0	FID	ACIS-I-1	7.00	5149	0.087	-0.084	0.008	0.014	0.000000	0.000000	927.32	-997.38
1	FID	ACIS-I-5	6.98	5149	-0.230	0.076	0.008	0.015	0.000000	0.000000	-1821.05	900.10
2	FID	ACIS-I-6	7.01	5149	0.051	0.079	0.007	0.011	0.000000	0.000000	392.59	1544.85
3	GUIDE	1117788296	9.31	10283	-0.022	0.088	0.114	0.175	87.681530	-56.905135	145.81	1019.96
4	GUIDE	1117789248	9.60	10286	0.093	0.328	0.183	0.297	89.010774	-57.063627	1761.81	-1104.13
5	GUIDE	1117791864	7.96	10291	-0.084	-0.151	0.066	0.112	88.233196	-56.515696	1882.46	1390.86
6	GUIDE	1117792128	9.10	10289	-0.030	-0.218	0.114	0.181	88.506993	-56.554756	2205.19	931.59
7	GUIDE	1117792416	8.28	10294	0.038	-0.040	0.147	0.234	86.907694	-56.816381	-825.71	2235.35

2.4 Star Slots

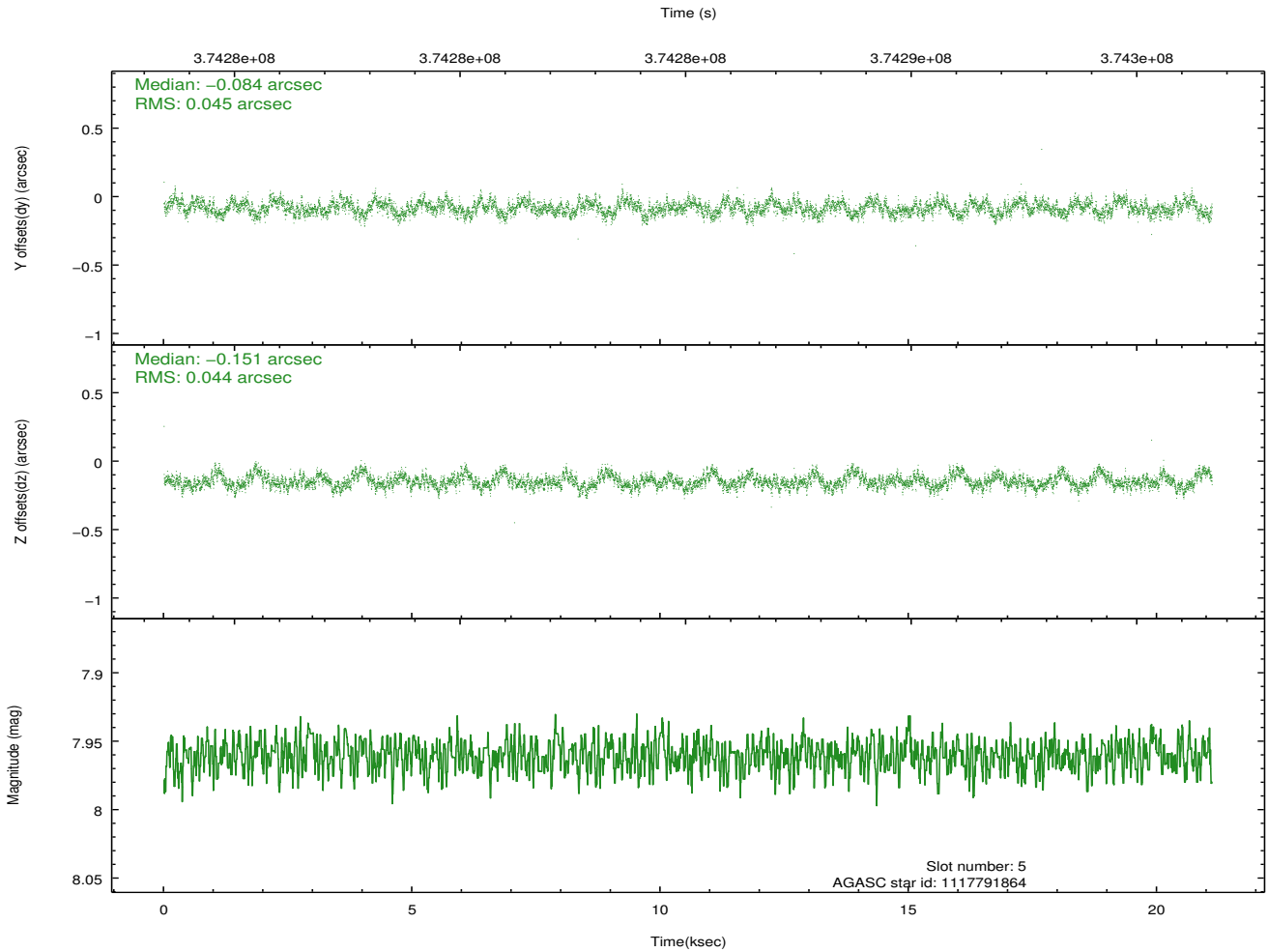
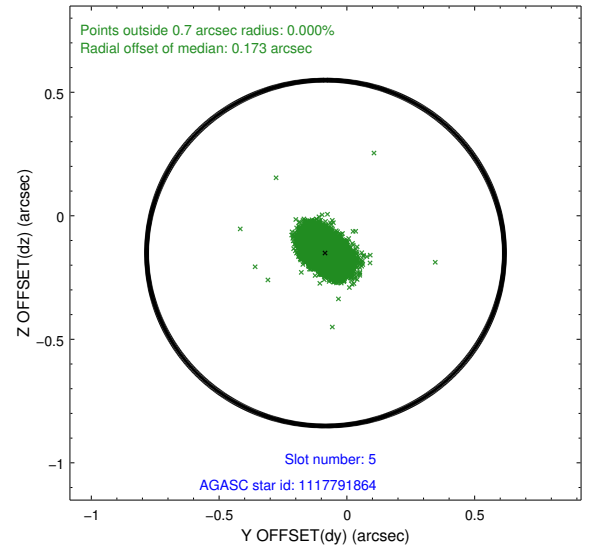
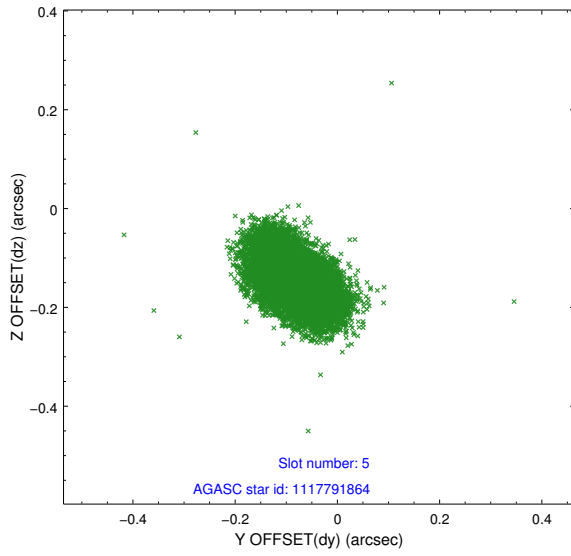
2.4.1 Slot 3



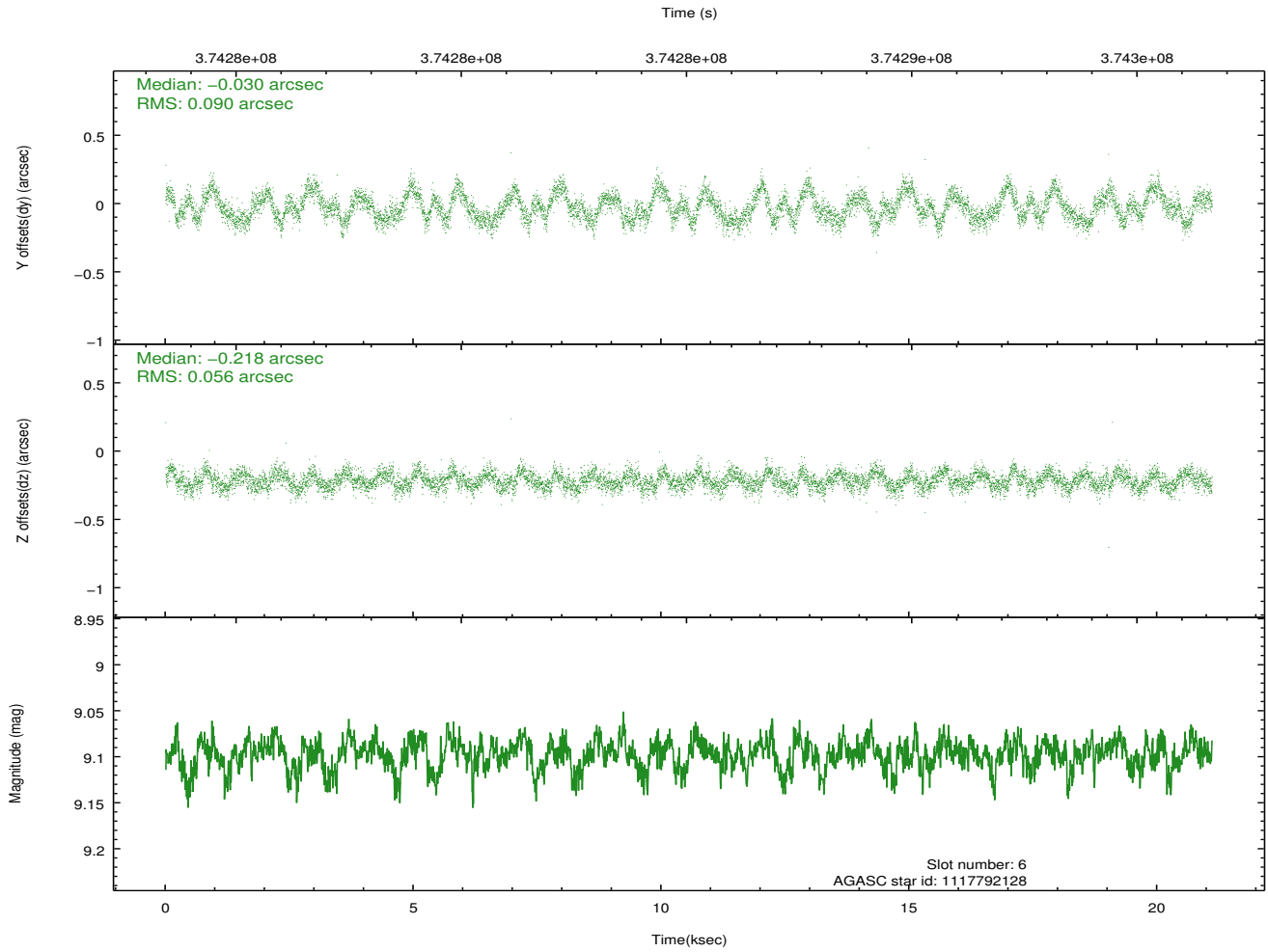
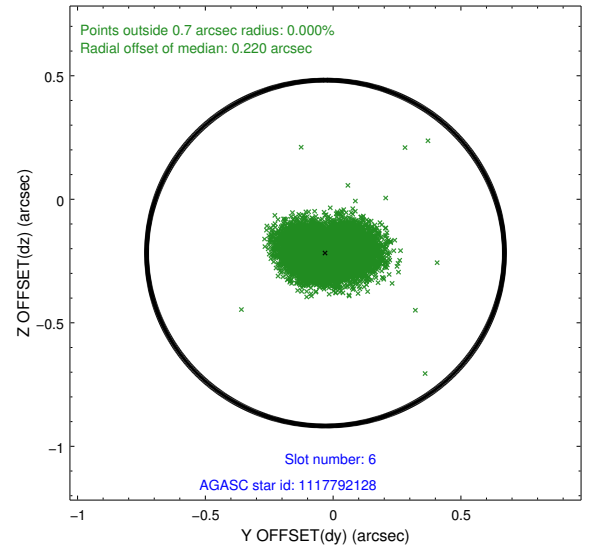
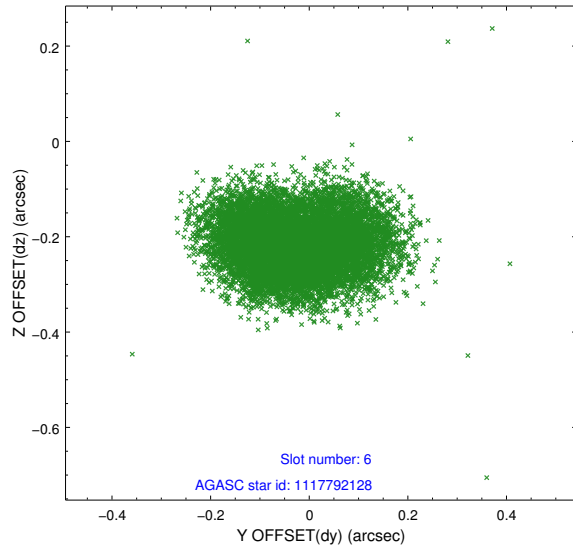
2.4.2 Slot 4



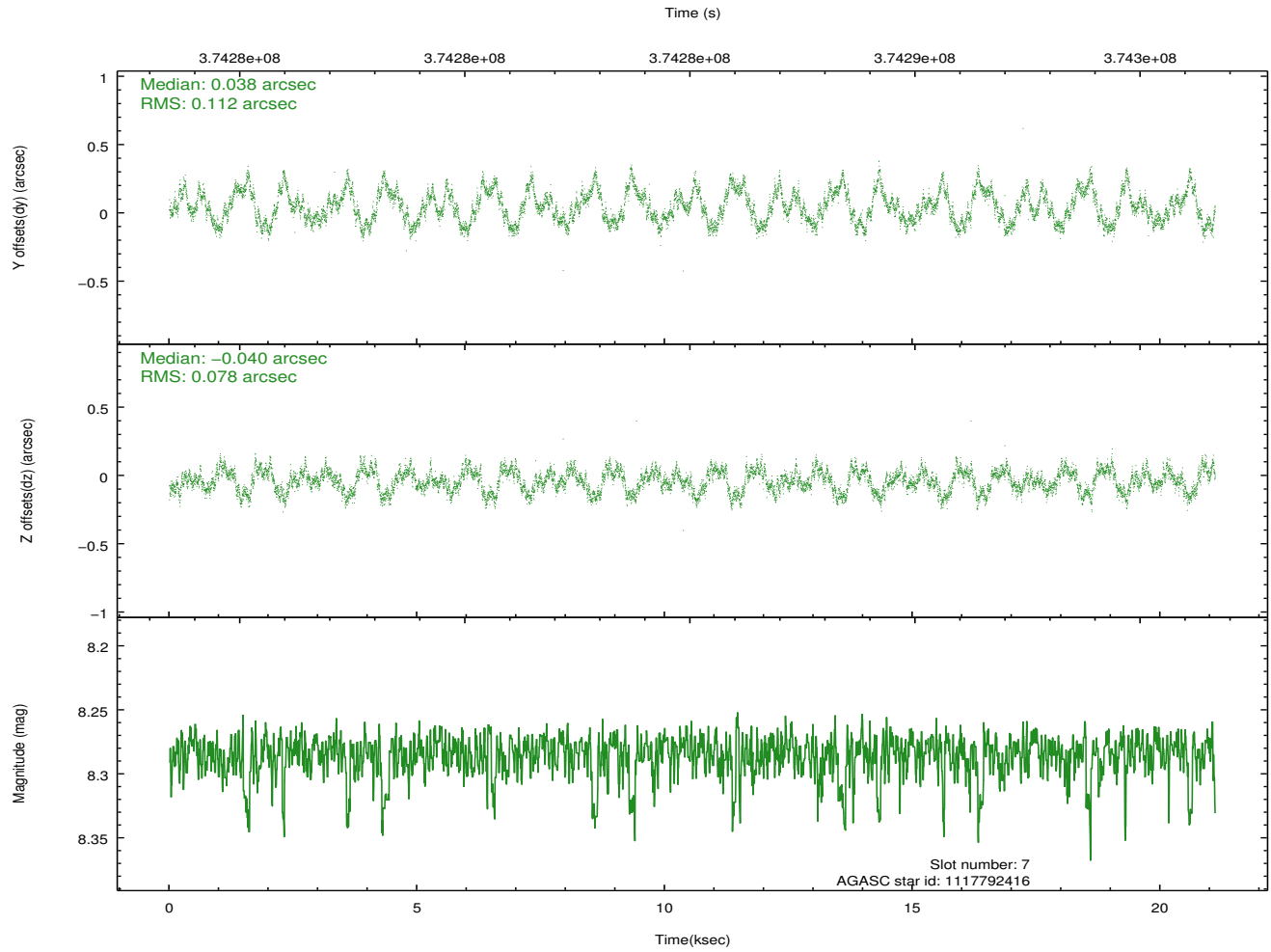
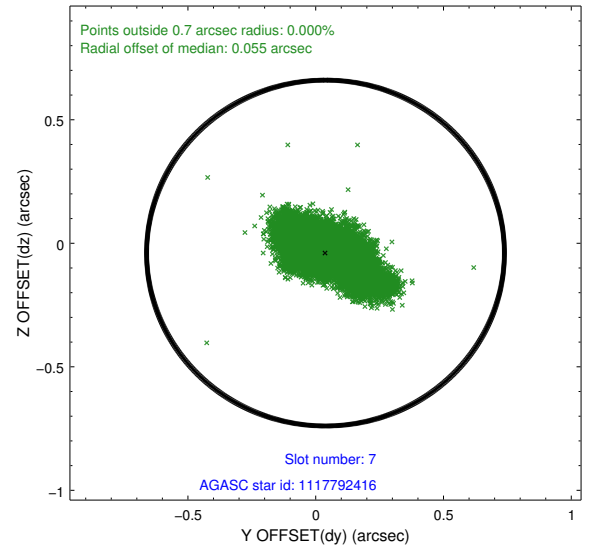
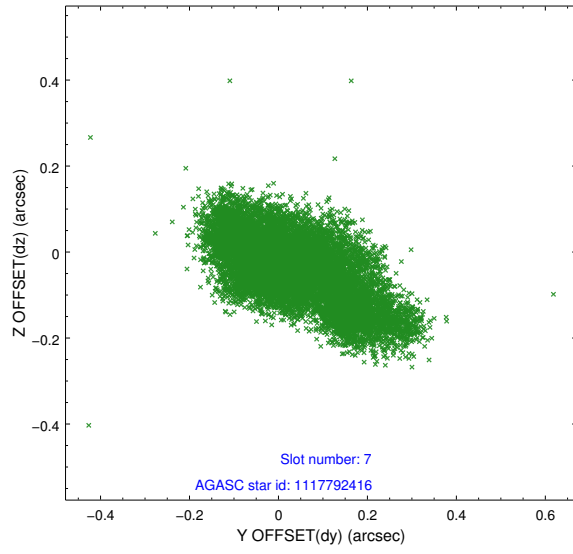
2.4.3 Slot 5



2.4.4 Slot 6

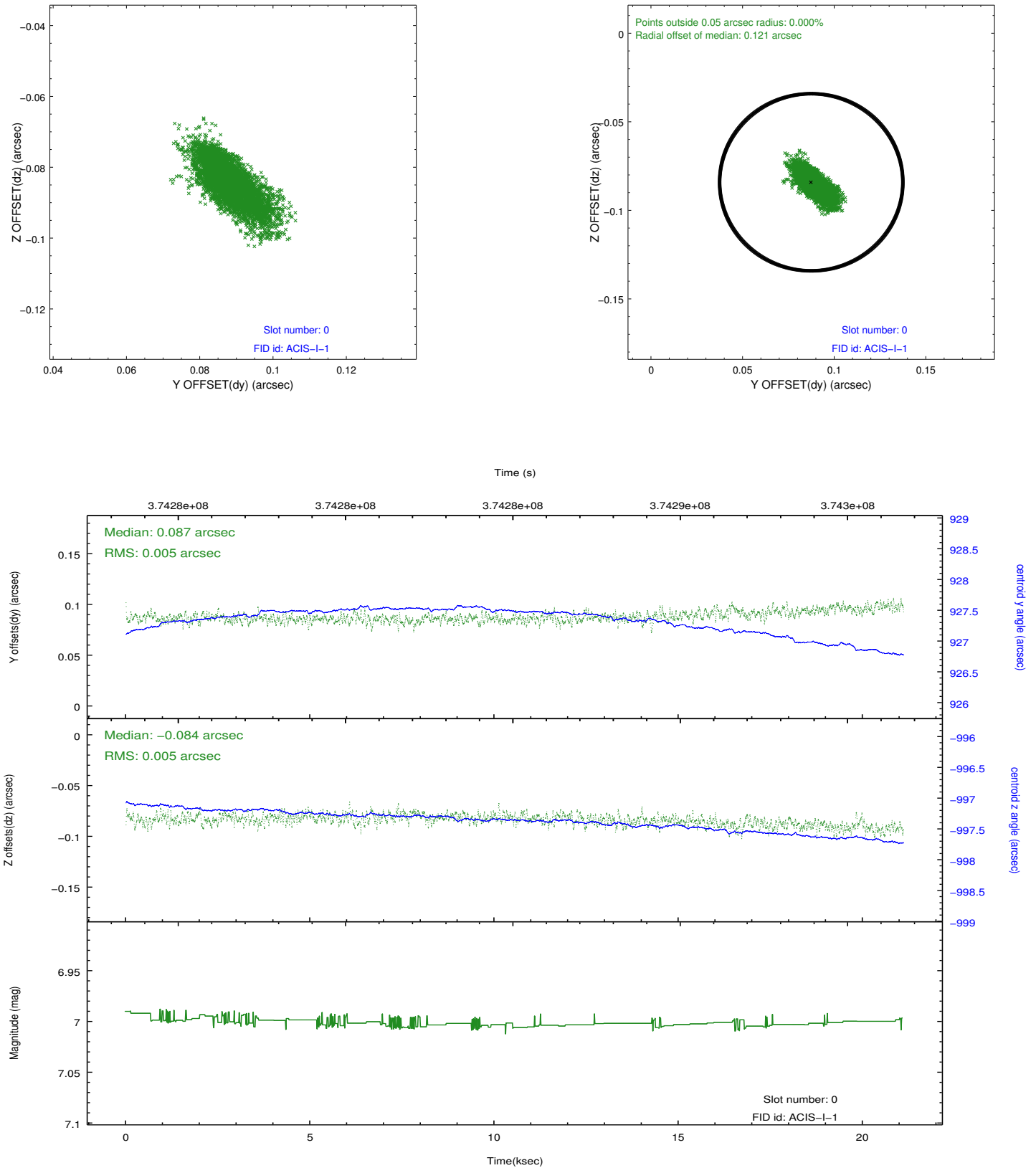


2.4.5 Slot 7

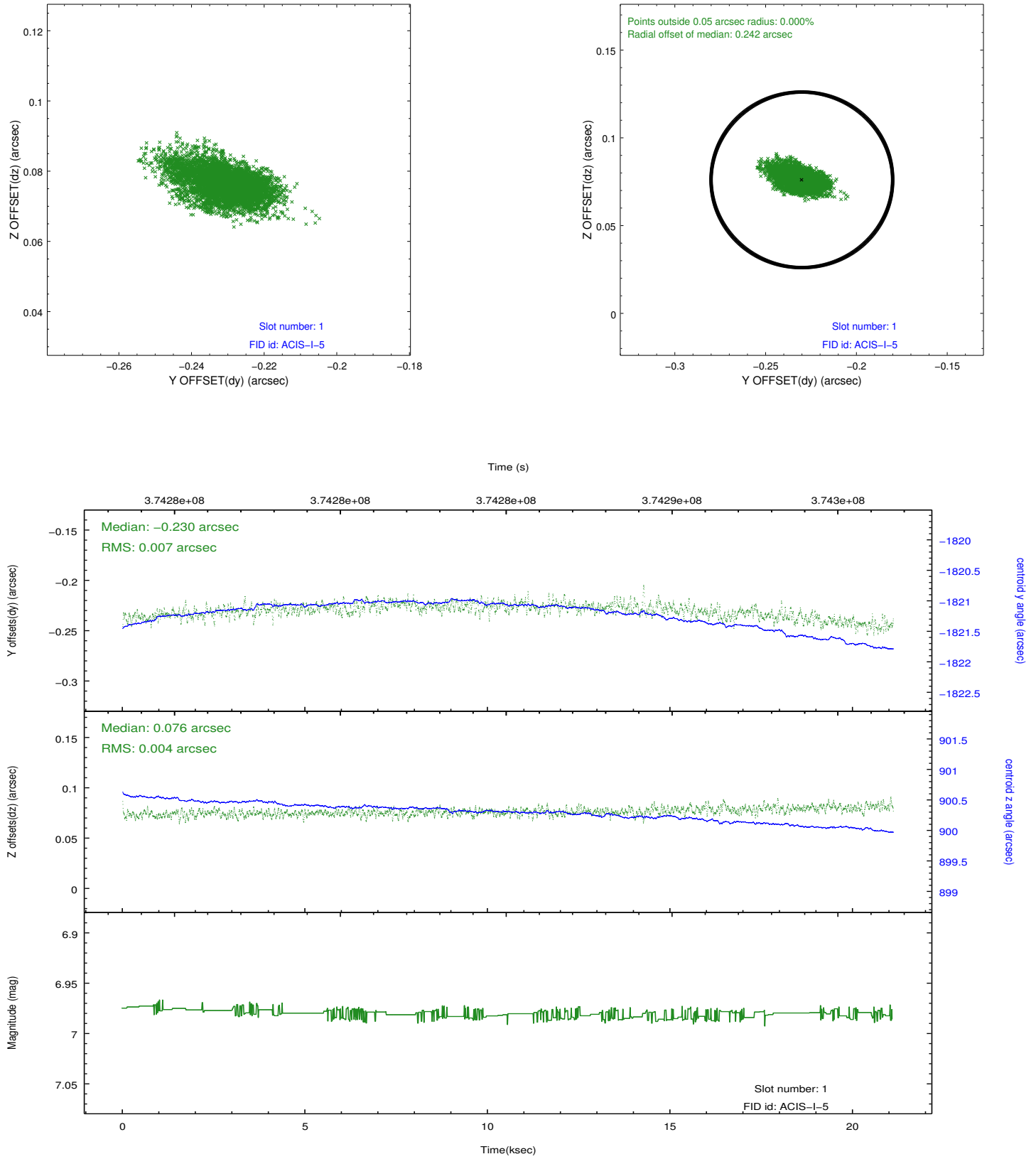


2.5 FID Slots

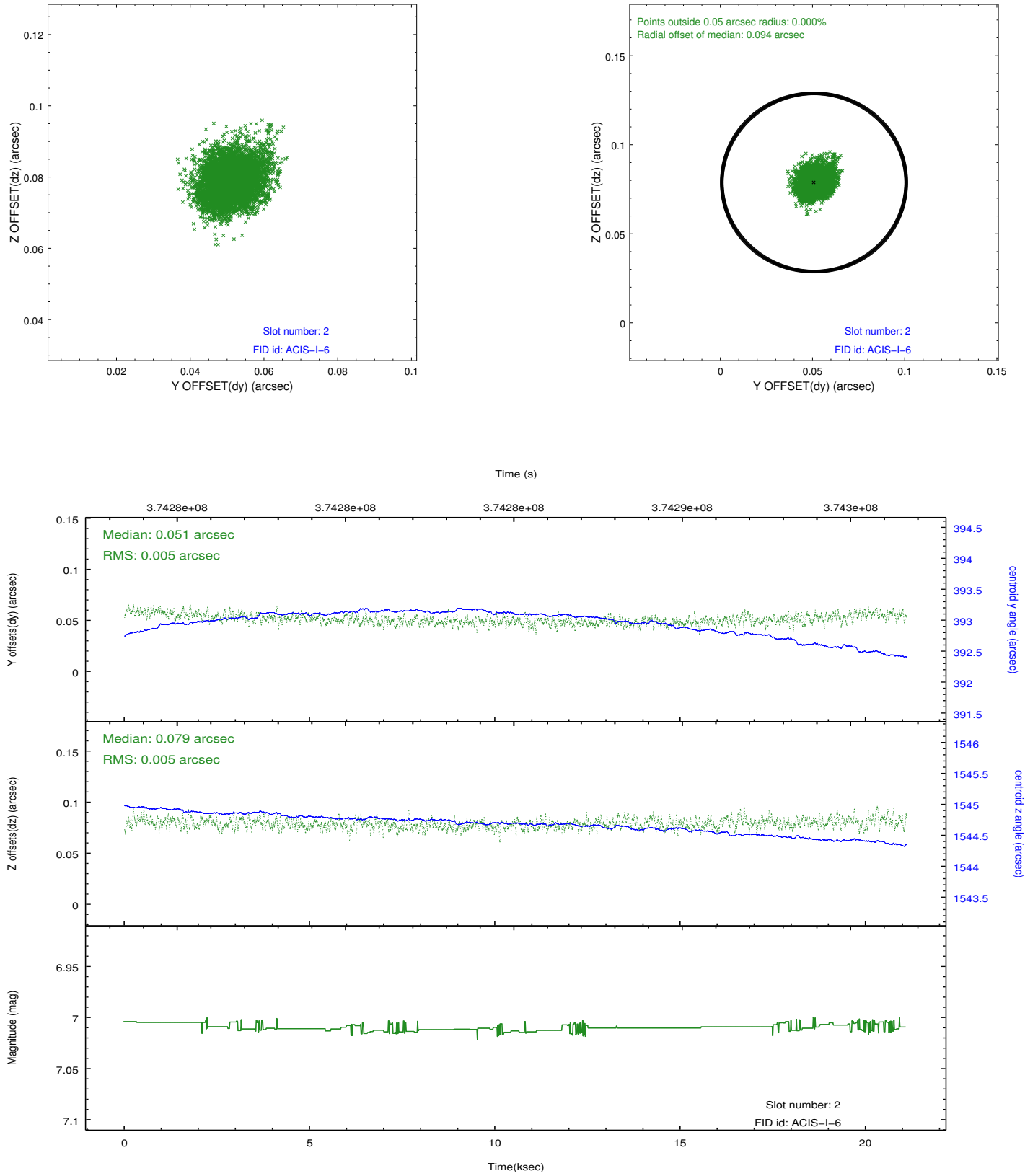
2.5.1 Slot 0



2.5.2 Slot 1



2.5.3 Slot 2



A Summary

A.1 Status

V&V Scientist	Jen Lauer
V&V Date (YYYY-MM-DD)	2012.06.20
V&V Edition	1
V&V Disposition and Status	OK
V&V Charge Time	20.040167768478

A.2 Comments