

V&V Reference Report

L2 ASCDS Version : 8.4.5

Observation 11771 - L2 Version 2
Chandra X-Ray Center

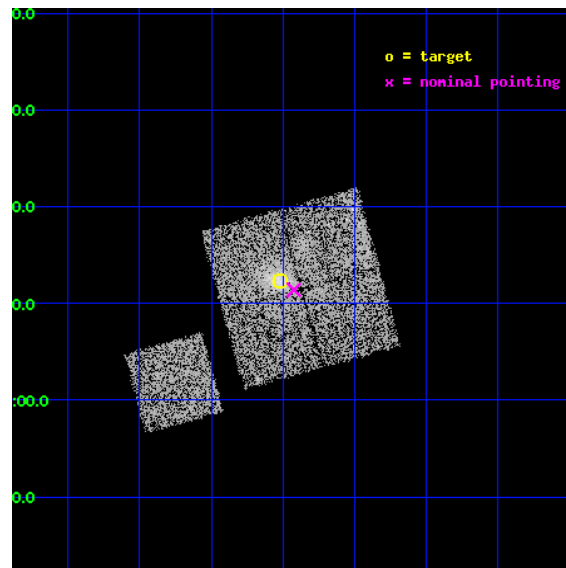
L2 Processing Date : Jul 1 2012

Contents

1	Front	2
2	OBI	3
2.1	OBI	3
2.1.1	Images	3
2.1.2	Bias	3
2.1.3	Parameters	4
2.1.4	Events	4
2.2	Compared Parameters	5
2.3	Aspect	6
2.4	Star Slots	9
2.4.1	Slot 3	9
2.4.2	Slot 4	10
2.4.3	Slot 5	11
2.4.4	Slot 6	12
2.4.5	Slot 7	13
2.5	FID Slots	14
2.5.1	Slot 0	14
2.5.2	Slot 1	15
2.5.3	Slot 2	16
A	Summary	17
A.1	Status	17
A.2	Comments	17

1 Front

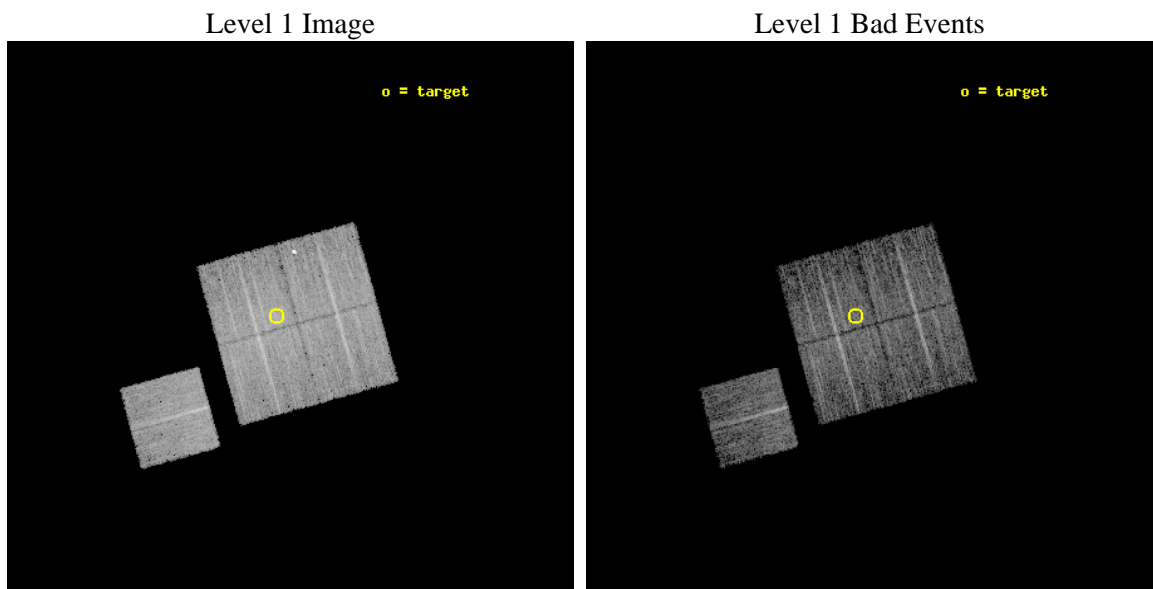
seq_num	800911	Sequence number
obs_id	11771	Observation id
title	The X-Ray, SZ, and Optical Scaling Relations of Massive Galaxy Clusters	Proposal title
observer	Dr. Eli Rykoff	Principal investigator
object	RXC J1327+0211	Source name
dtcycle	0	
cycle	P	events from which exps? Prim/Second/Both
ra_targ	201.754167	Observer's specified target RA [deg]
dec_targ	2.205417	Observer's specified target Dec [deg]
ra_nom	201.7307268433	Nominal RA [deg]
dec_nom	2.1901130220551	Nominal Dec [deg]
roll_nom	254.48608219676	Nominal Roll [deg]
revision	2	Processing version of data
ontime	6773.5000520945	Sum of GTIs [s]
livetime	6684.9992873357	Livetime [s]
ontime0	6773.5000520945	Sum of GTIs [s]
ontime1	6773.5000520945	Sum of GTIs [s]
ontime2	6770.3590618372	Sum of GTIs [s]
ontime3	6773.5000520945	Sum of GTIs [s]
ontime6	6773.5000520945	Sum of GTIs [s]
l2events	25559	Number of level 2 events



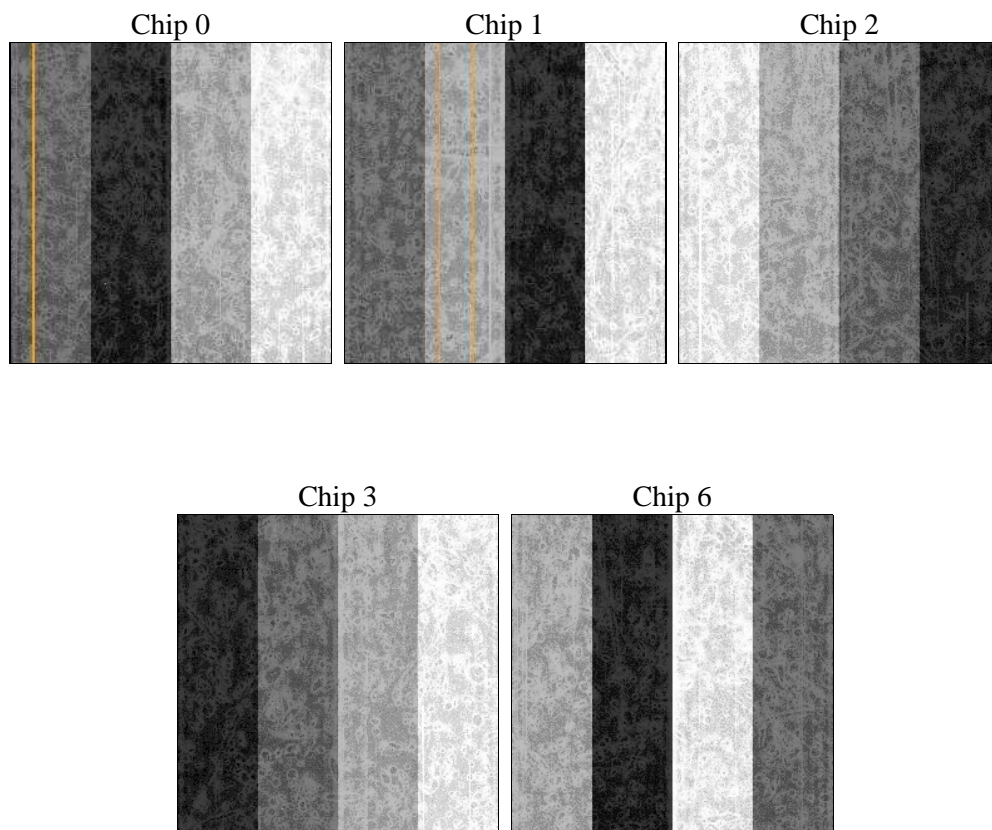
2 OBI

2.1 OBI

2.1.1 Images



2.1.2 Bias



2.1.3 Parameters

obi_num	1	Obi number	sched_exp_time	7000.000000	[s] Scheduled observation exposure time
ascdsver	8.4.5	Processing system revision	ontime	6773.5000520945	Sum of GTIs [s]
caldsver	4.5.0	 	ontime0	6773.5000520945	Sum of GTIs [s]
date	2012-07-01T16:20:23	Date and time of file creation	ontime1	6773.5000520945	Sum of GTIs [s]
revision	2	Processing version of data	ontime2	6770.3590618372	Sum of GTIs [s]
			ontime3	6773.5000520945	Sum of GTIs [s]
			ontime6	6773.5000520945	Sum of GTIs [s]
			l1events	242561	Number of level 1 events

2.1.4 Events

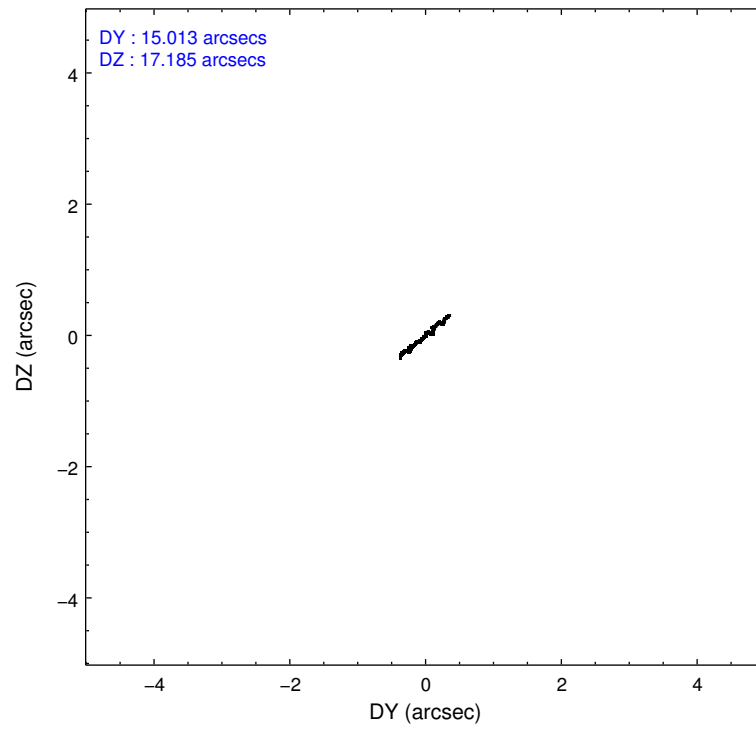
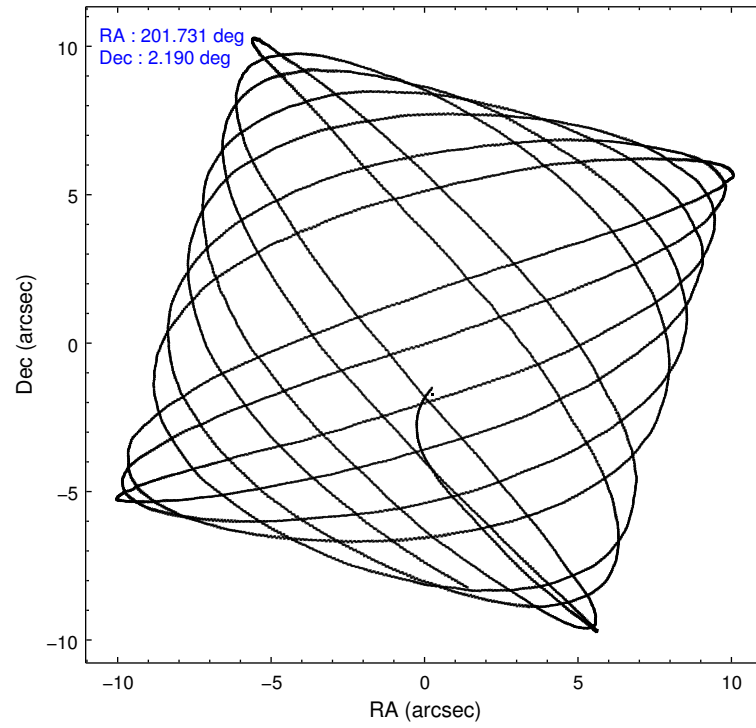
	ccd 0	ccd 1	ccd 2	ccd 3	ccd 6
level 1 events	46482	49536	50138	48028	48377
rejected events	40937	41110	44588	40979	42757
rejected %	88%	82%	88%	85%	88%

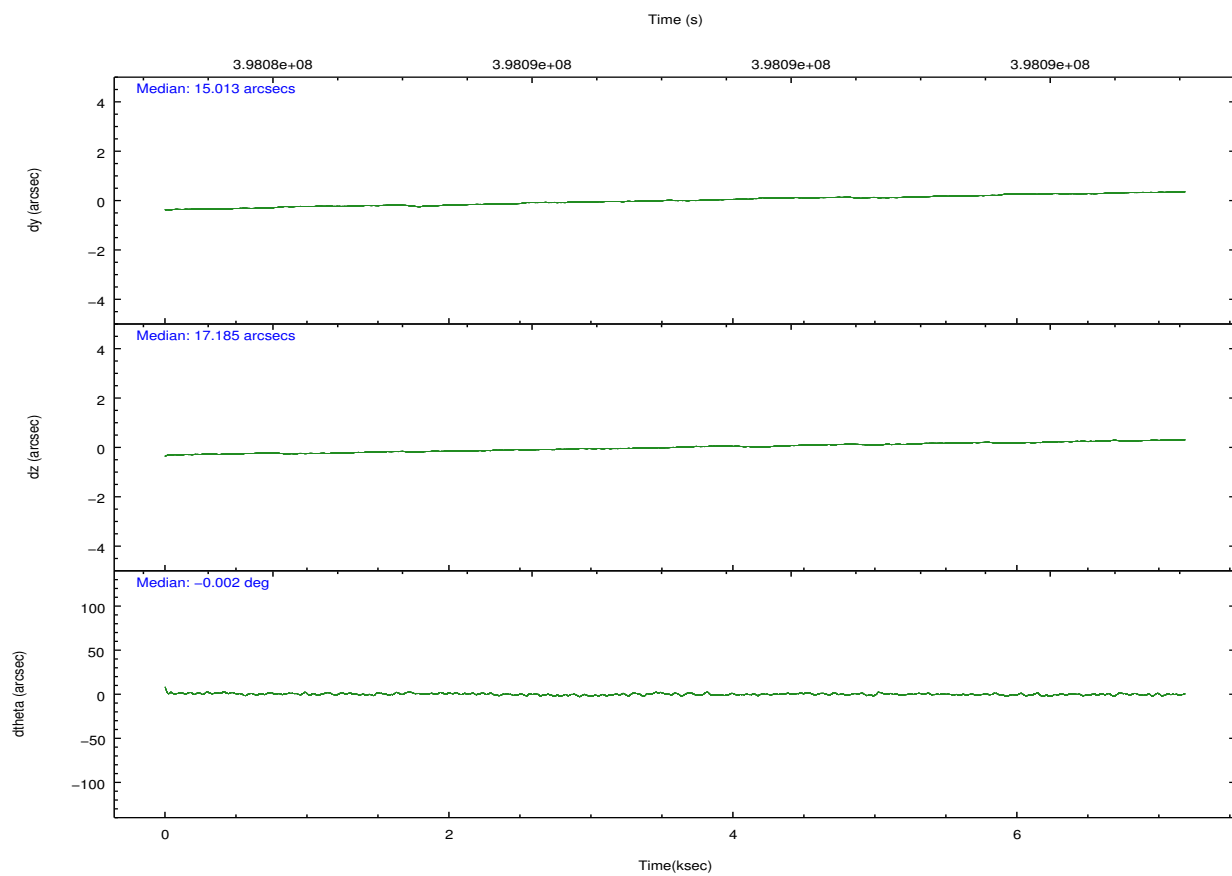
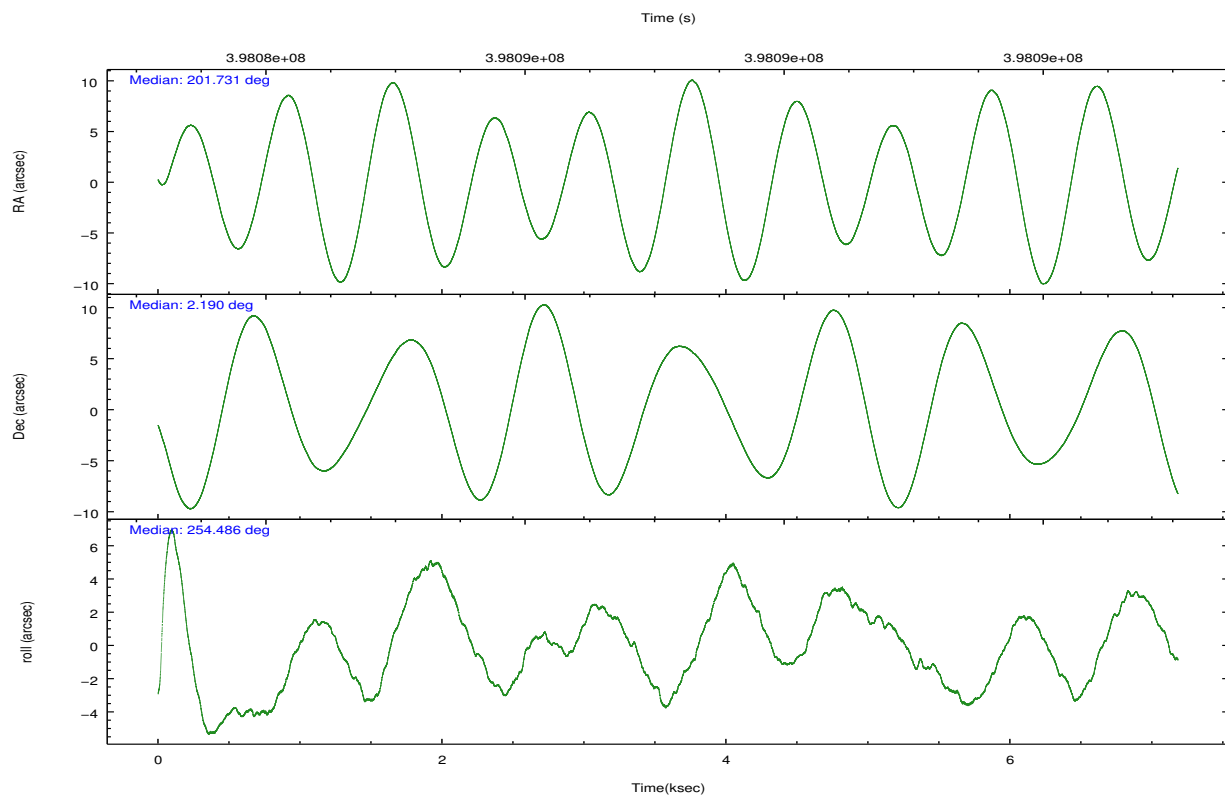
	ccd 0	ccd 1	ccd 2	ccd 3	ccd 6
grade 0 events	2025	4551	2148	3374	1987
	4%	9%	4%	7%	4%
grade 1 events	35	43	35	42	18
	0%	0%	0%	0%	0%
grade 2 events	1397	1420	1332	1253	1209
	3%	2%	2%	2%	2%
grade 3 events	577	631	535	658	644
	1%	1%	1%	1%	1%
grade 4 events	522	622	539	674	555
	1%	1%	1%	1%	1%
grade 5 events	1949	2099	1868	2316	2153
	4%	4%	3%	4%	4%
grade 6 events	1027	1207	999	1091	1230
	2%	2%	1%	2%	2%
grade 7 events	38950	38963	42682	38620	40581
	83%	78%	85%	80%	83%

2.2 Compared Parameters

Parameter	Planned	Actual	Parameter	Planned	Actual
Instrument	ACIS	ACIS	Obspar format version number	7	7
Detector	ACIS-01236	ACIS-01236	Obspar file type	PREDICTED	ACTUAL
Grating	NONE	NONE	Obspar update status	NONE	UPDATED
Data mode	VFAINT	VFAINT	Number of optional ACIS chips dropped	0	0
Observation mode	POINTING	POINTING	On-chip summing requested	N	N
[deg] Pointing RA	201.723744	201.730726843303	Subarray requested	NONE	NONE
[deg] Pointing Dec	2.216749	2.190113022055096	Alternating exposures requested	N	N
[deg] Pointing Roll	254.277676	254.4860821967631	[s] Primary exposure time	0.000000	3.1
[mm] SIM focus pos	-0.782348	-0.7809083437167272			
[mm] SIM defocus	0	0.001439871863259334			
[mm] SIM translation stage pos	-233.592463	-233.5899487761303			
[mm] SIM translation stage offset	0	-0.002504226799430853			
[s] Observation start time (MET)	398083704.184000	398082626.29794			
Observation start date	2010-08-13T10:47:18	2010-08-13T10:30:26			
[s] Observation end time (MET)	398090704.184000	398091712.4109			
Observation end date	2010-08-13T12:43:58	2010-08-13T13:01:52			
Read mode	TIMED	TIMED			

2.3 Aspect



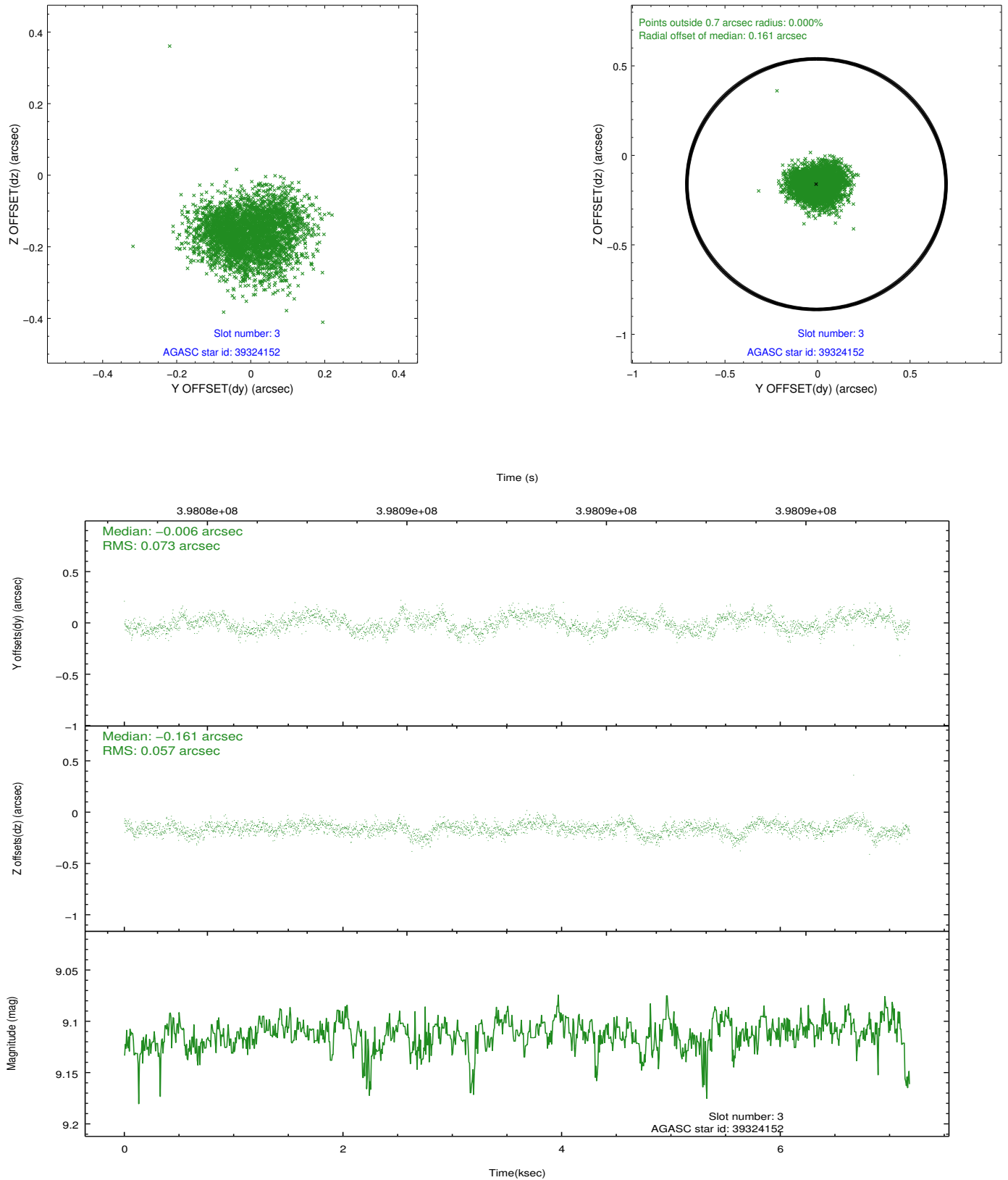


Slot Statistics

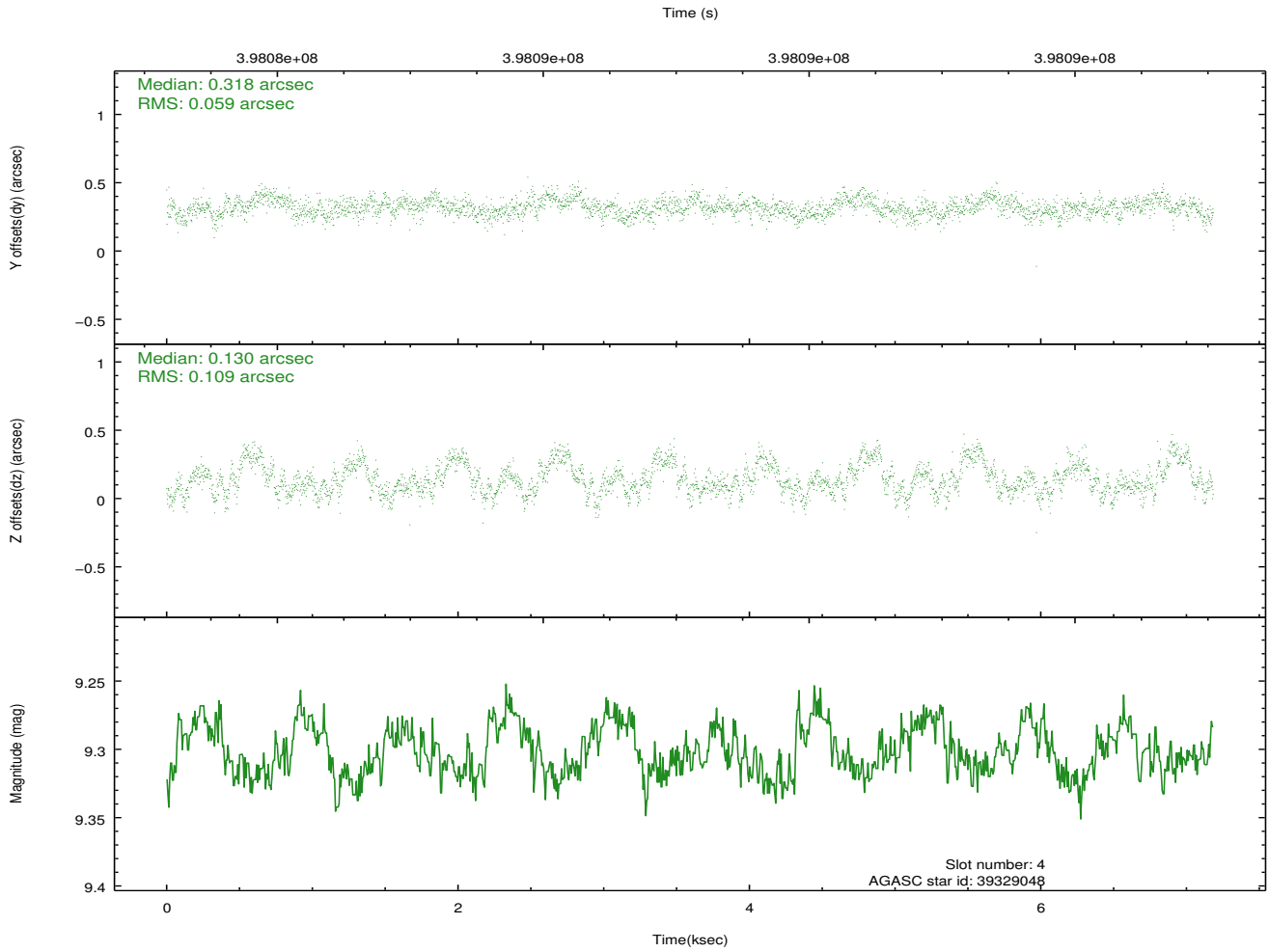
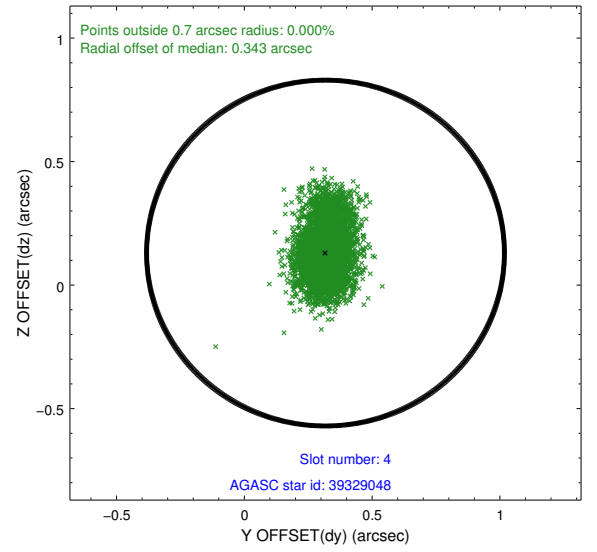
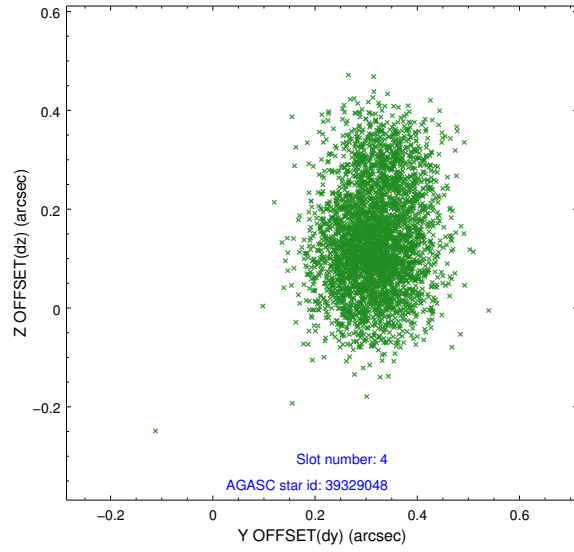
slot	status	id	mag	n_pts	med_dy	med_dz	dr1	dr2	ra	dec	mean_y	mean_z
0	FID	ACIS-I-1	7.00	1751	-0.025	-0.045	0.009	0.015	0.000000	0.000000	924.43	-840.82
1	FID	ACIS-I-2	6.93	1753	-0.167	-0.035	0.008	0.013	0.000000	0.000000	-769.36	-847.67
2	FID	ACIS-I-4	6.93	1752	0.094	0.147	0.007	0.013	0.000000	0.000000	2144.05	1058.77
3	GUIDE	39324152	9.11	3503	-0.006	-0.161	0.100	0.157	201.640884	1.733376	1756.23	184.45
4	GUIDE	39329048	9.30	3503	0.318	0.130	0.131	0.220	202.277315	2.158394	-336.71	1974.21
5	GUIDE	39717080	8.90	3500	-0.151	-0.181	0.084	0.134	201.533429	2.898109	-2175.79	-1322.77
6	GUIDE	39329600	8.86	3499	0.028	0.096	0.087	0.145	201.358190	1.640833	2352.17	-703.92
7	GUIDE	39324824	9.48	3497	-0.208	0.117	0.172	0.256	201.911959	1.473675	2392.16	1377.11

2.4 Star Slots

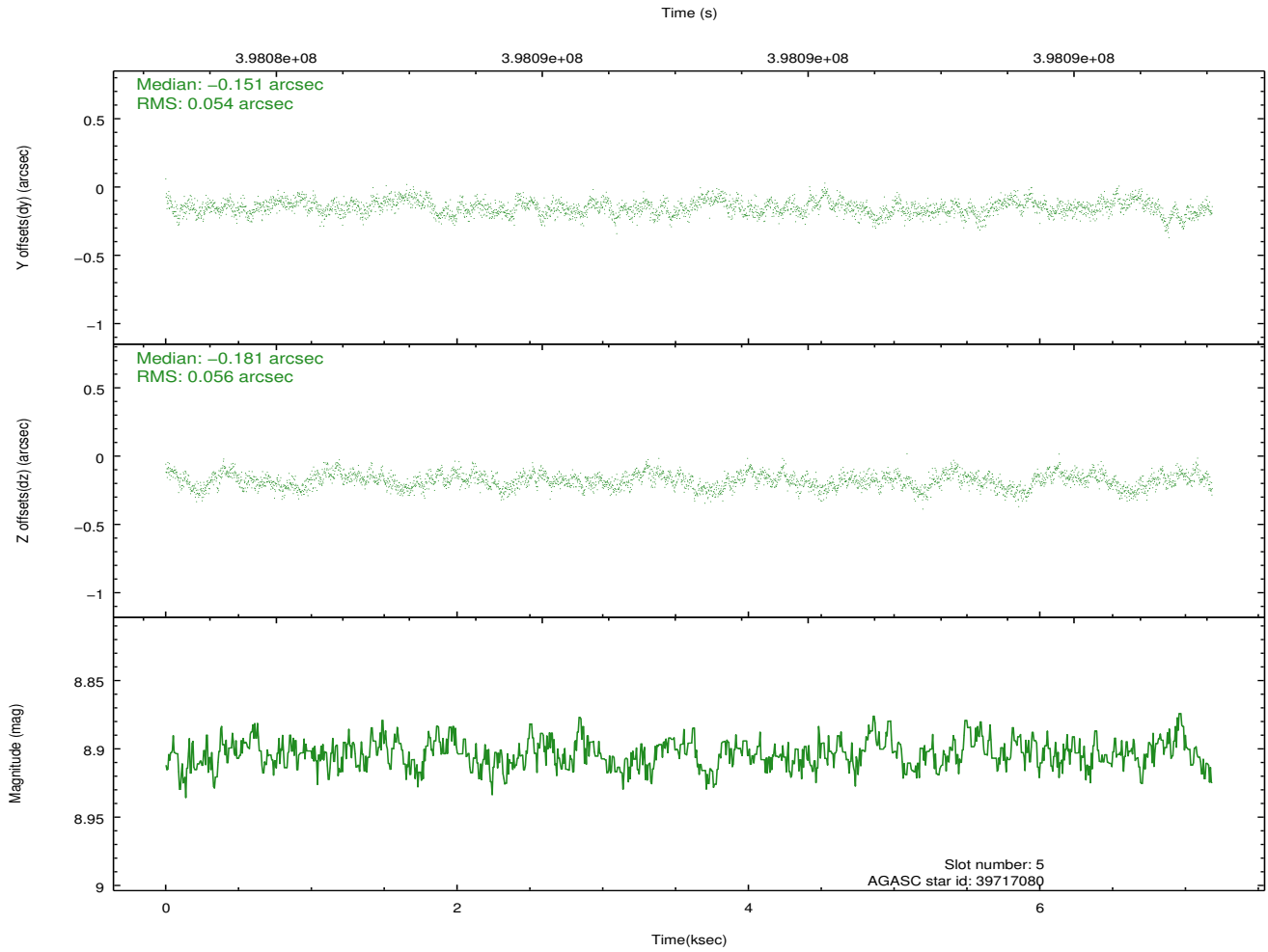
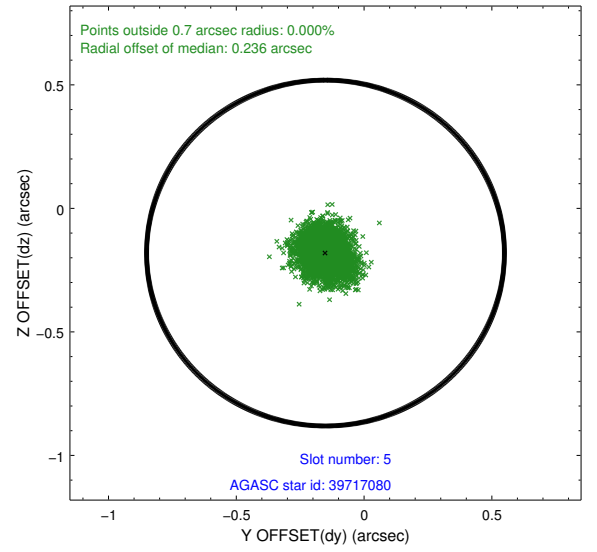
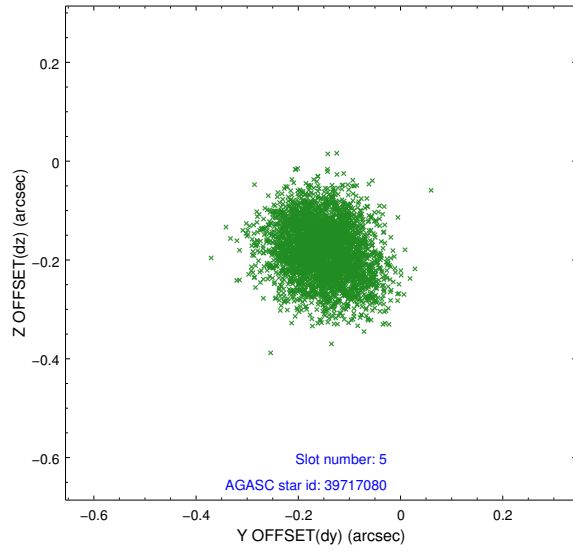
2.4.1 Slot 3



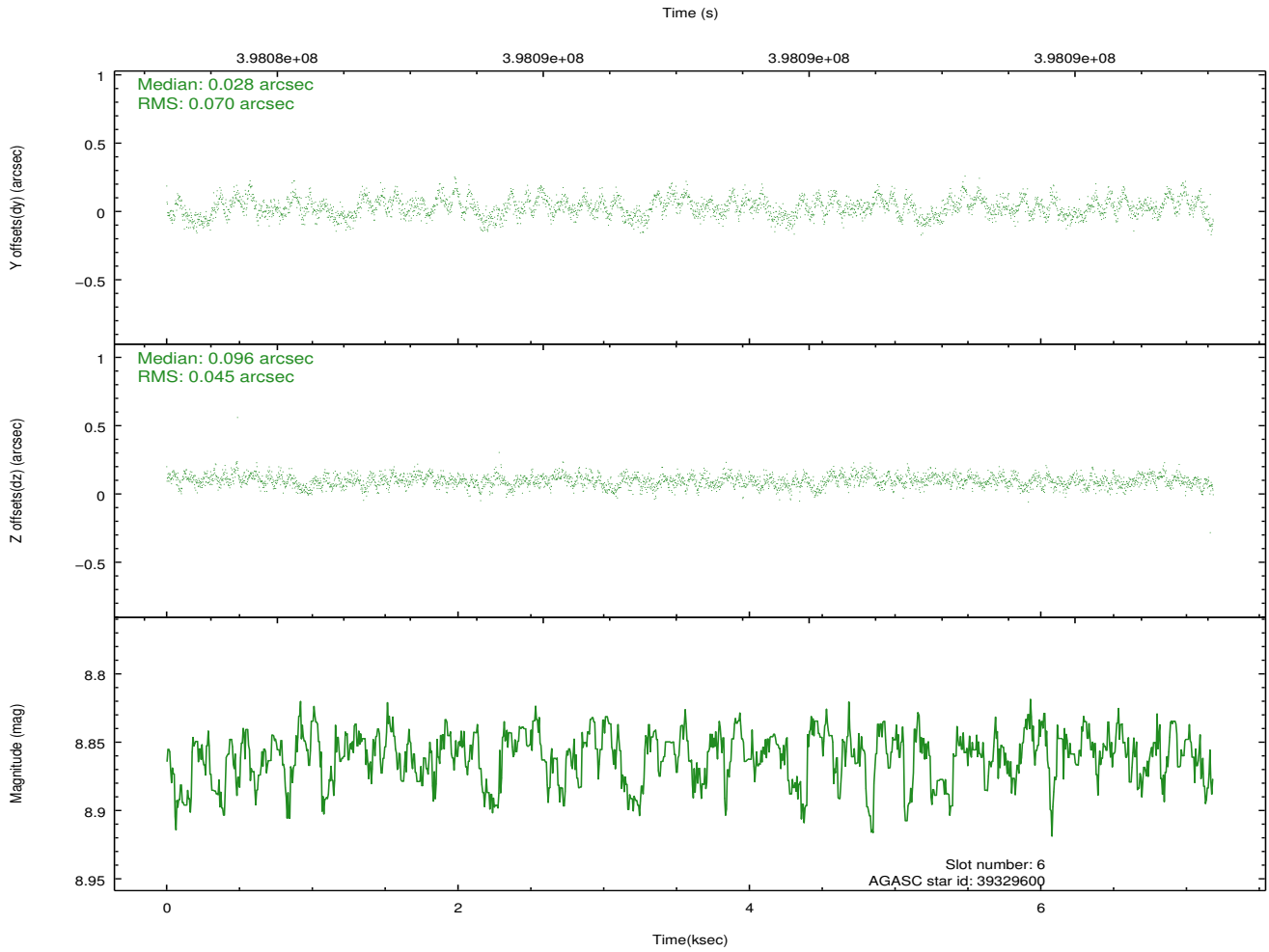
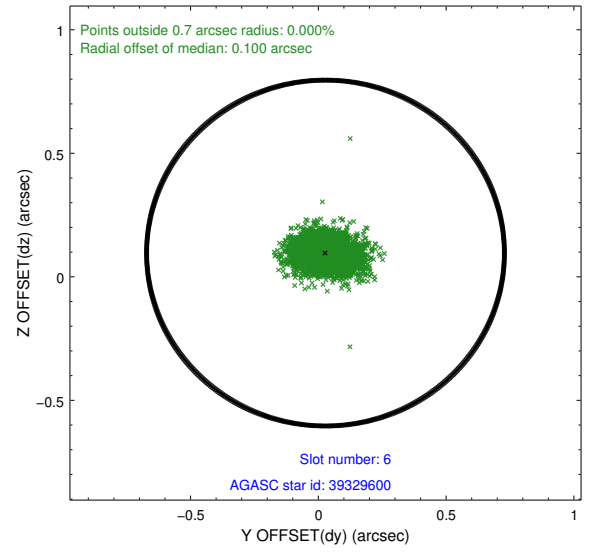
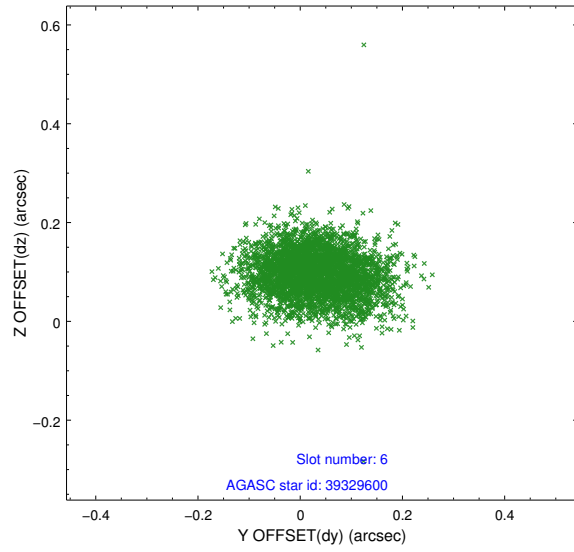
2.4.2 Slot 4



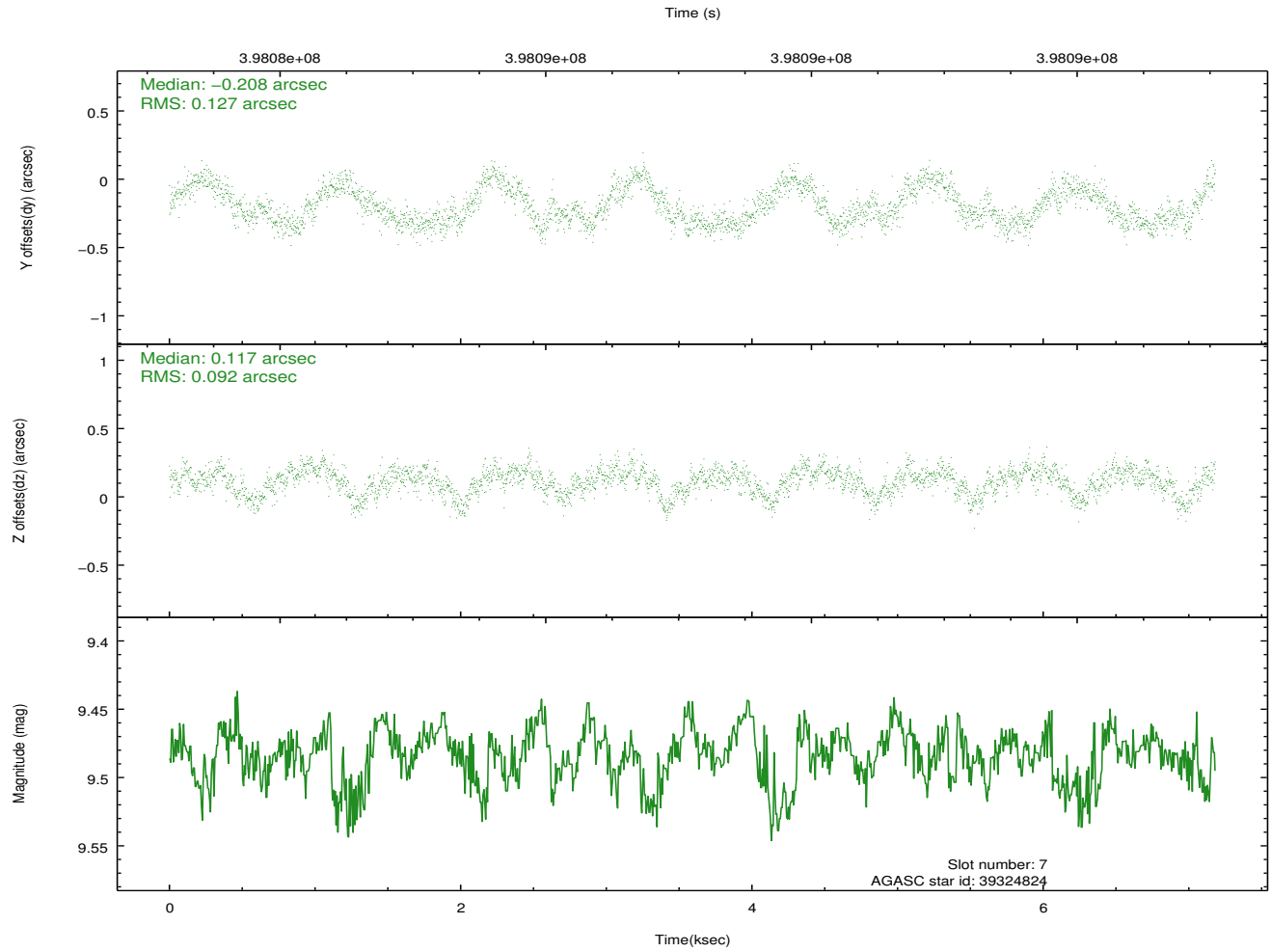
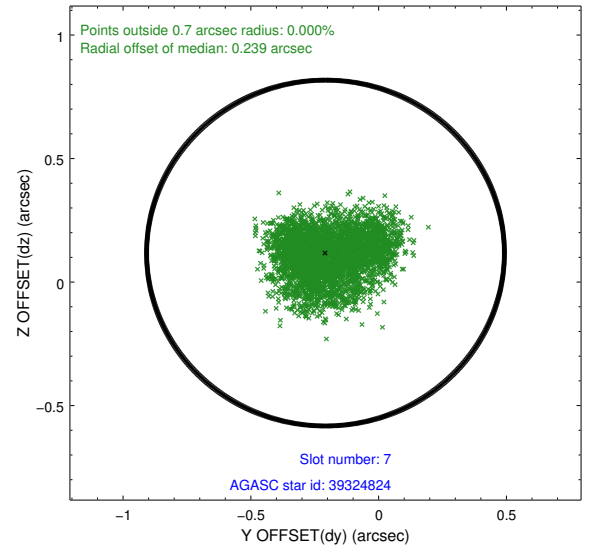
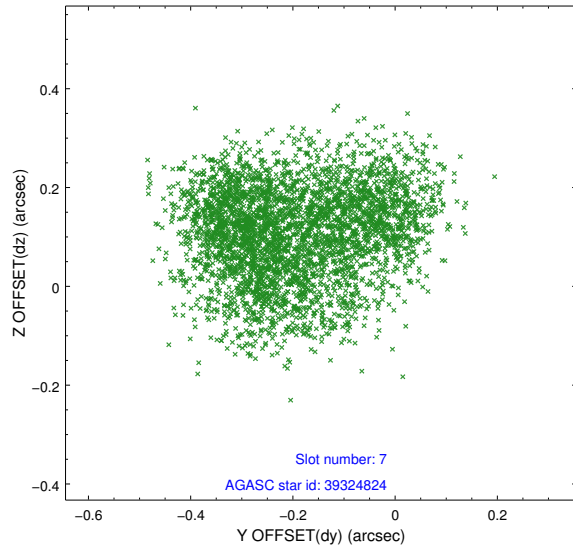
2.4.3 Slot 5



2.4.4 Slot 6

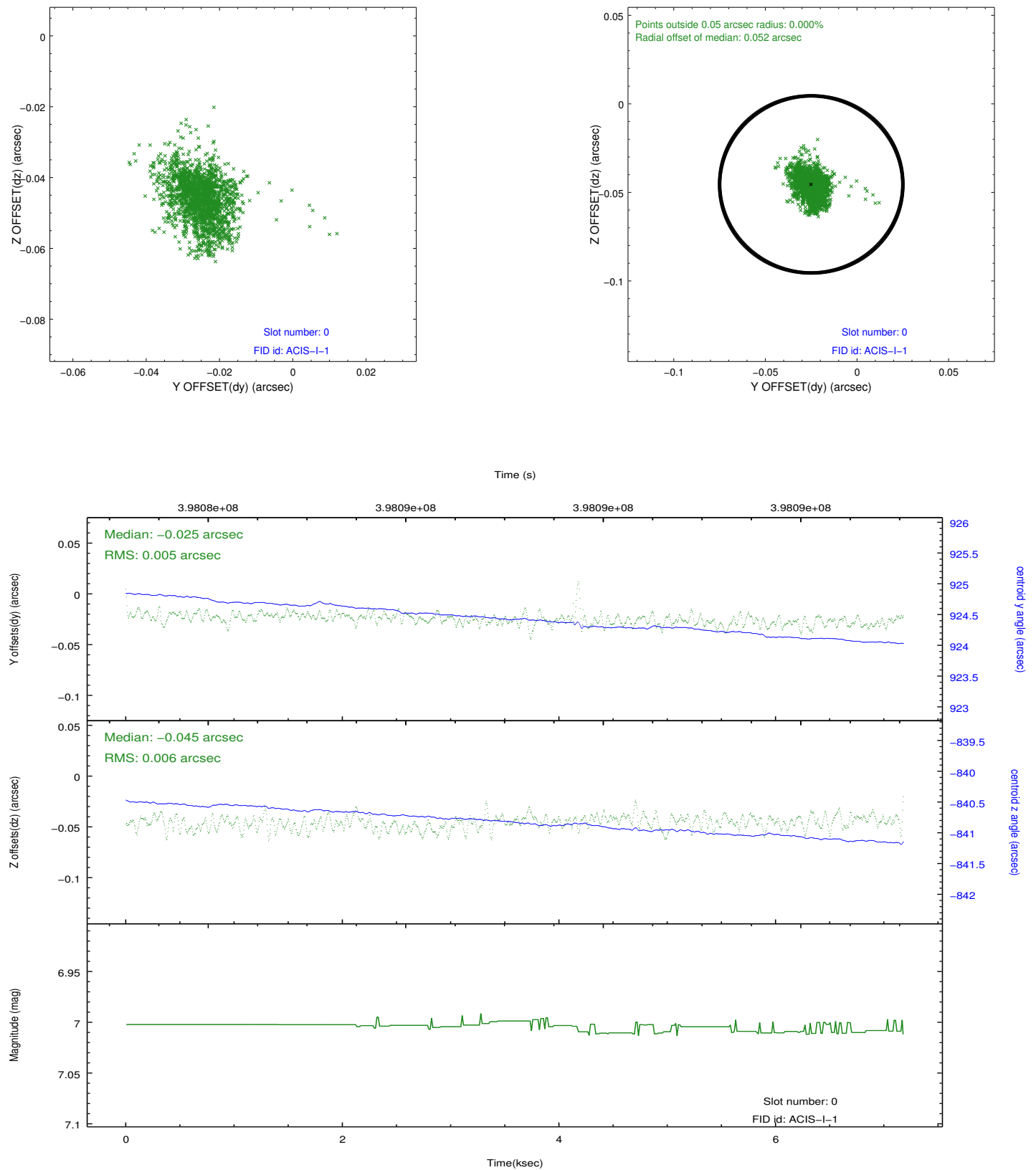


2.4.5 Slot 7

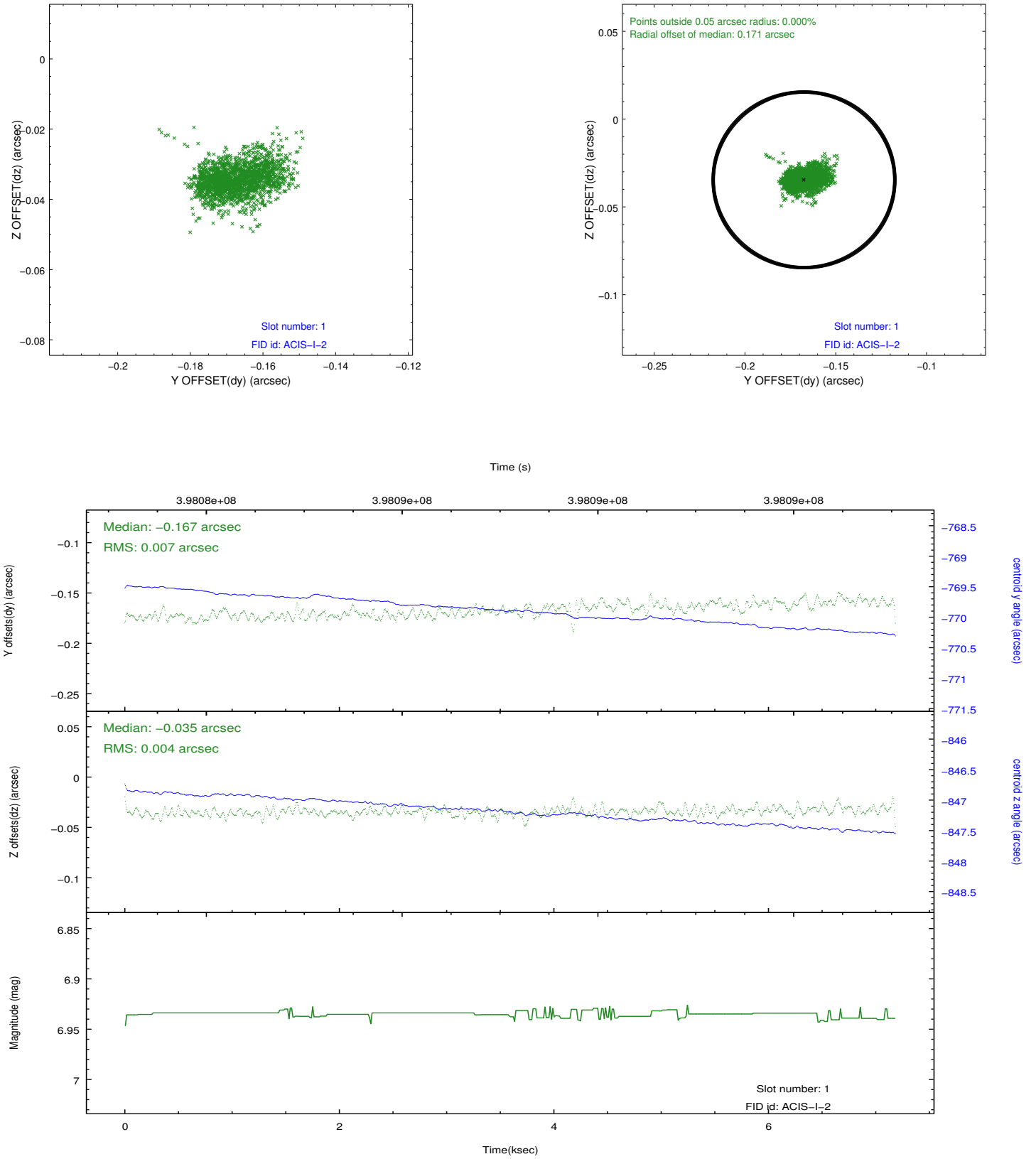


2.5 FID Slots

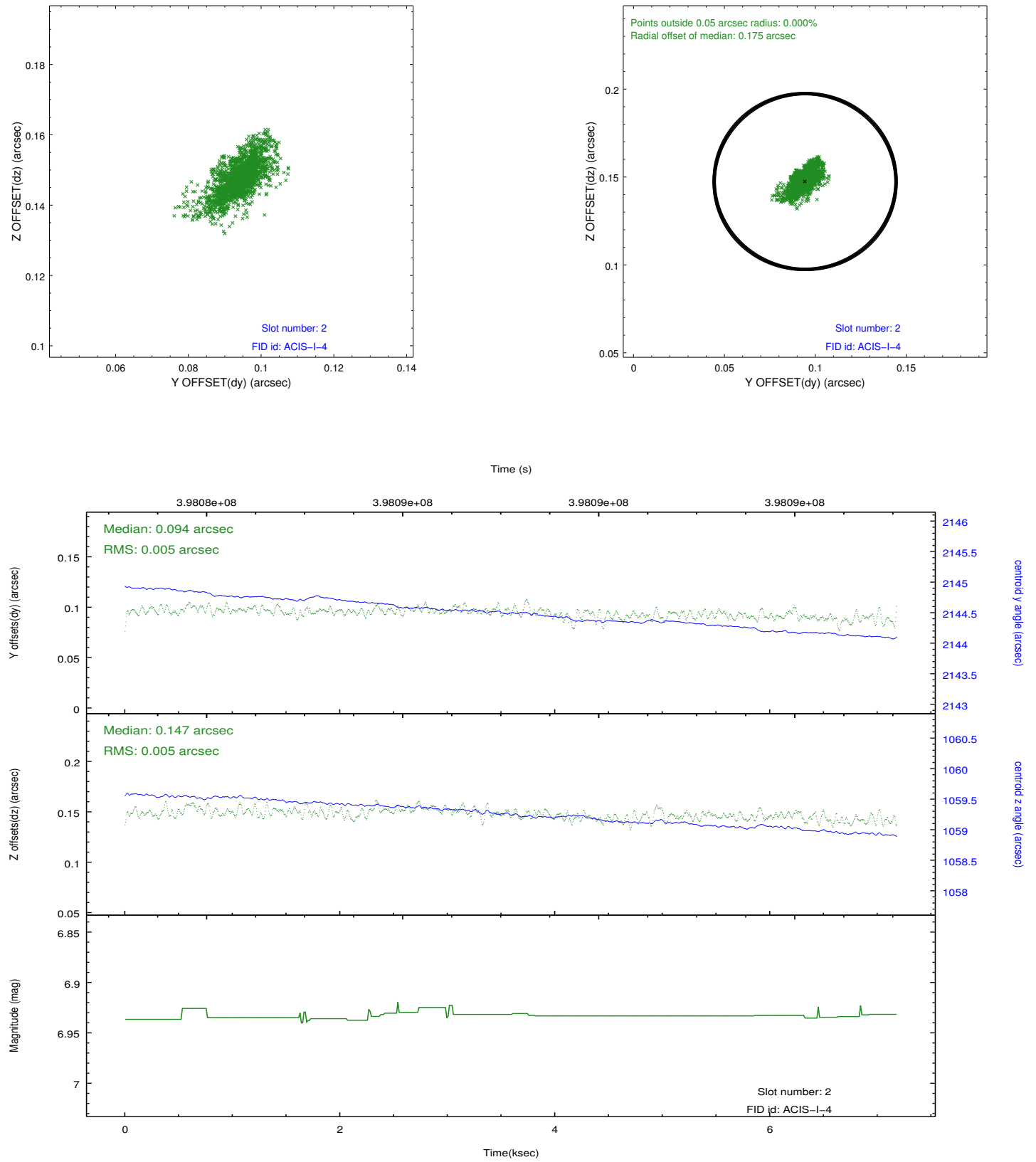
2.5.1 Slot 0



2.5.2 Slot 1



2.5.3 Slot 2



A Summary

A.1 Status

V&V Scientist	Jen Lauer
V&V Date (YYYY-MM-DD)	2012.07.10
V&V Edition	1
V&V Disposition and Status	OK
V&V Charge Time	6.7735000520945

A.2 Comments