

V&V Reference Report

L2 ASCDS Version : 8.1.2

Observation 1161 - L2 Version 6

Chandra X-Ray Center

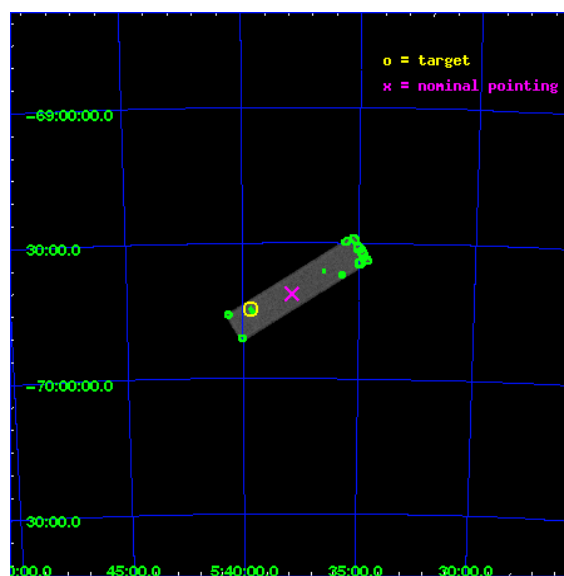
L2 Processing Date : Dec 2 2009

Contents

1	Front	2
2	OBI	3
2.1	OBI	3
2.1.1	Images	3
2.1.2	Parameters	4
2.1.3	Events	4
2.2	Compared Parameters	5
2.3	Aspect	6
2.4	Star Slots	9
2.4.1	Slot 3	9
2.4.2	Slot 4	10
2.4.3	Slot 5	11
2.4.4	Slot 6	12
2.4.5	Slot 7	13
2.5	FID Slots	14
2.5.1	Slot 0	14
2.5.2	Slot 1	15
2.5.3	Slot 2	16
3	Point Sources	17
A	Summary	18
A.1	Status	18
A.2	Comments	18

1 Front

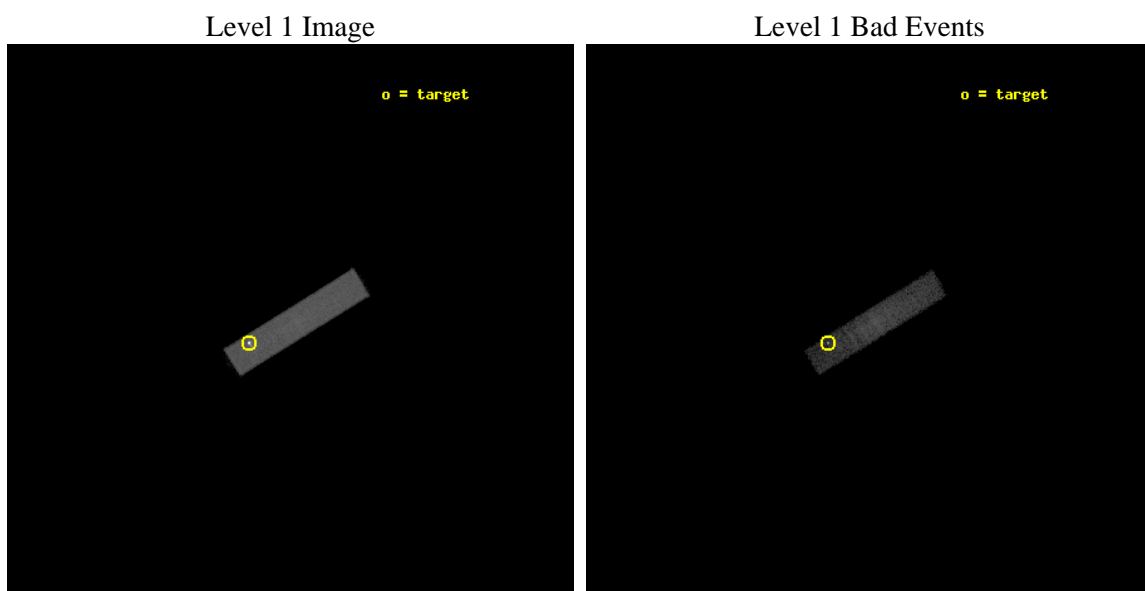
seq_num	480111	Sequence number
obs_id	1161	Observation id
title	 	Proposal title
observer	Dr. CXC Calibration	Principal investigator
object	LMC X-1	Source name
ra_targ	84.914583	Observer's specified target RA
dec_targ	-69.743611	Observer's specified target Dec
ra_nom	84.467687970703	Nominal RA
dec_nom	-69.688012416831	Nominal Dec
roll_nom	328.25201014437	Nominal Roll
revision	6	Processing version of data
ontime	2204.0063300729	[s]
livetime	2189.0402925998	Ontime multiplied by DTCOR
l2events	101301	Number of level 2 events



2 OBI

2.1 OBI

2.1.1 Images



2.1.2 Parameters

obi_num	1	Obi number	sched_exp_time	2000.000000	Scheduled observation exposure time
ascdsver	8.1.2	Processing system revision	ontime	2204.0063300729	[s]
caldbver	4.1.4	 	l1events	133856	Number of level 1 events
date	2009-12-02T19:01:02	Date and time of file creation			
revision	5	Processing version of data			

2.1.3 Events

Level 1 Events

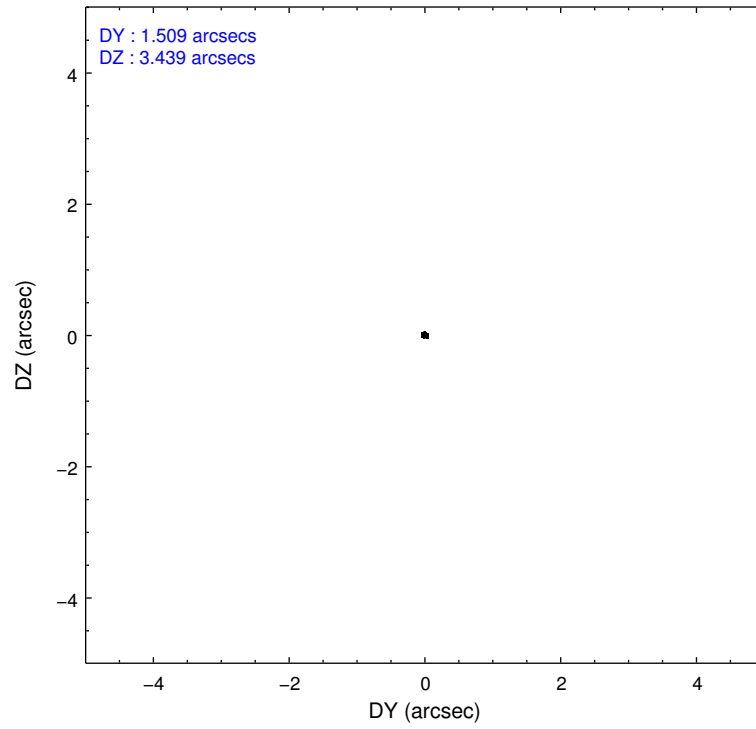
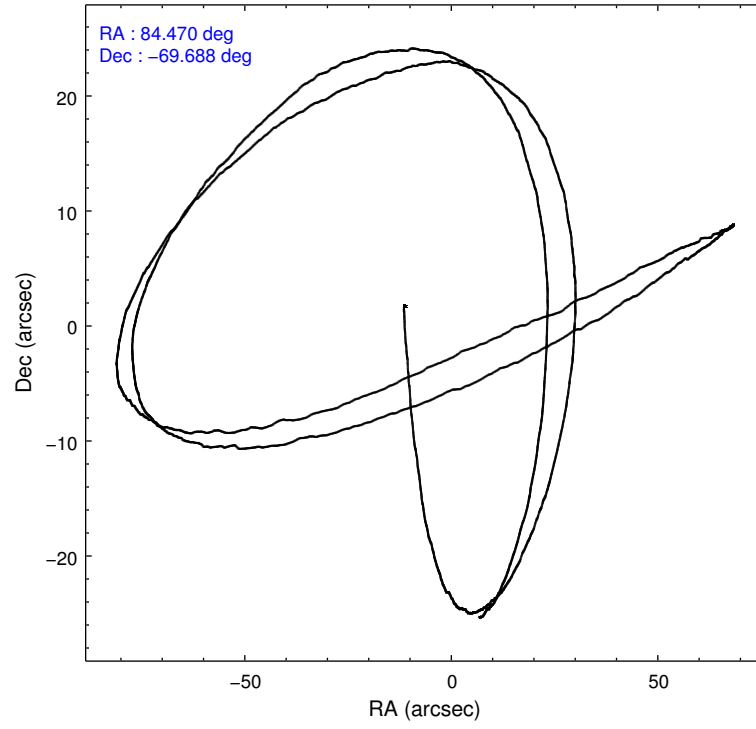
	segment 1	segment 2	segment 3
level 1 events	0	133856	0
rejected events	0	27092	0
rejected %	0%	20%	0%

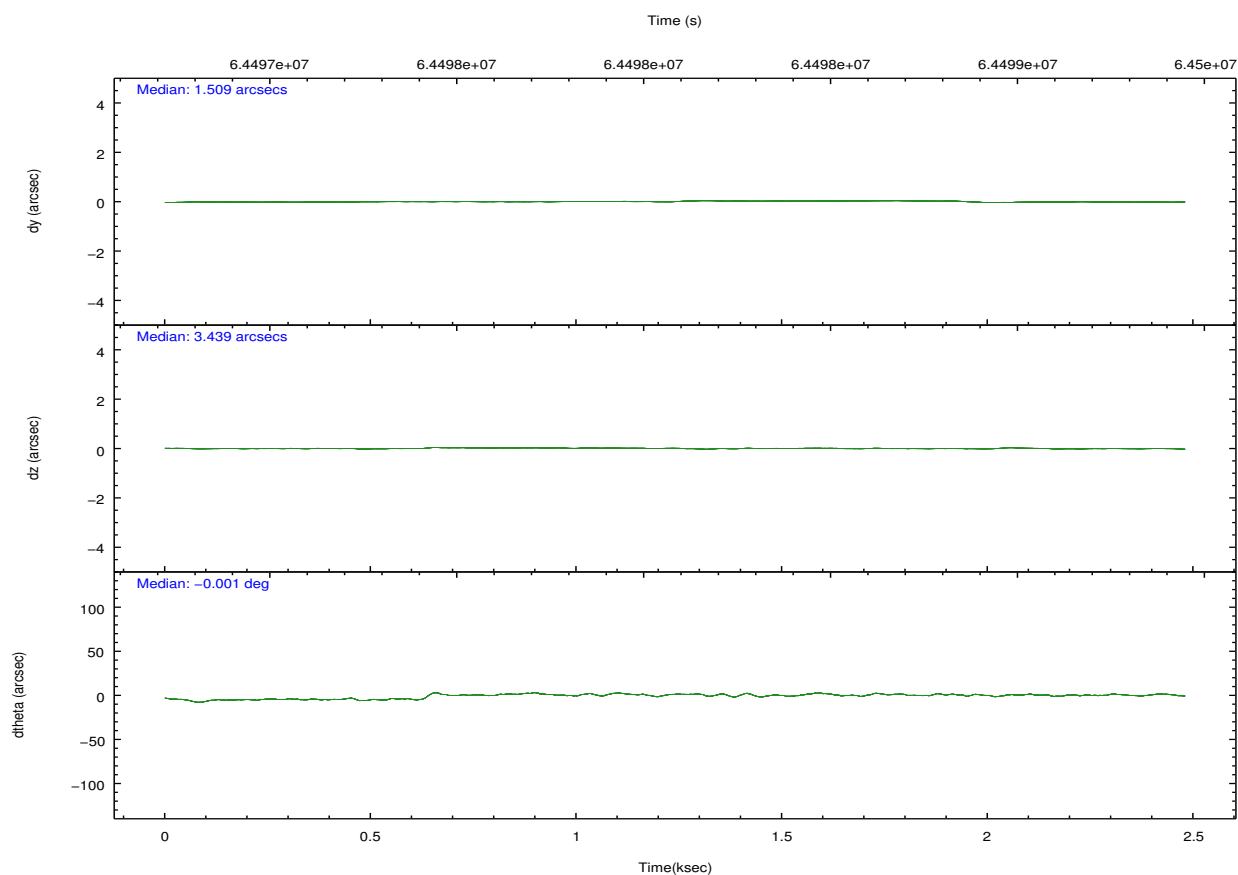
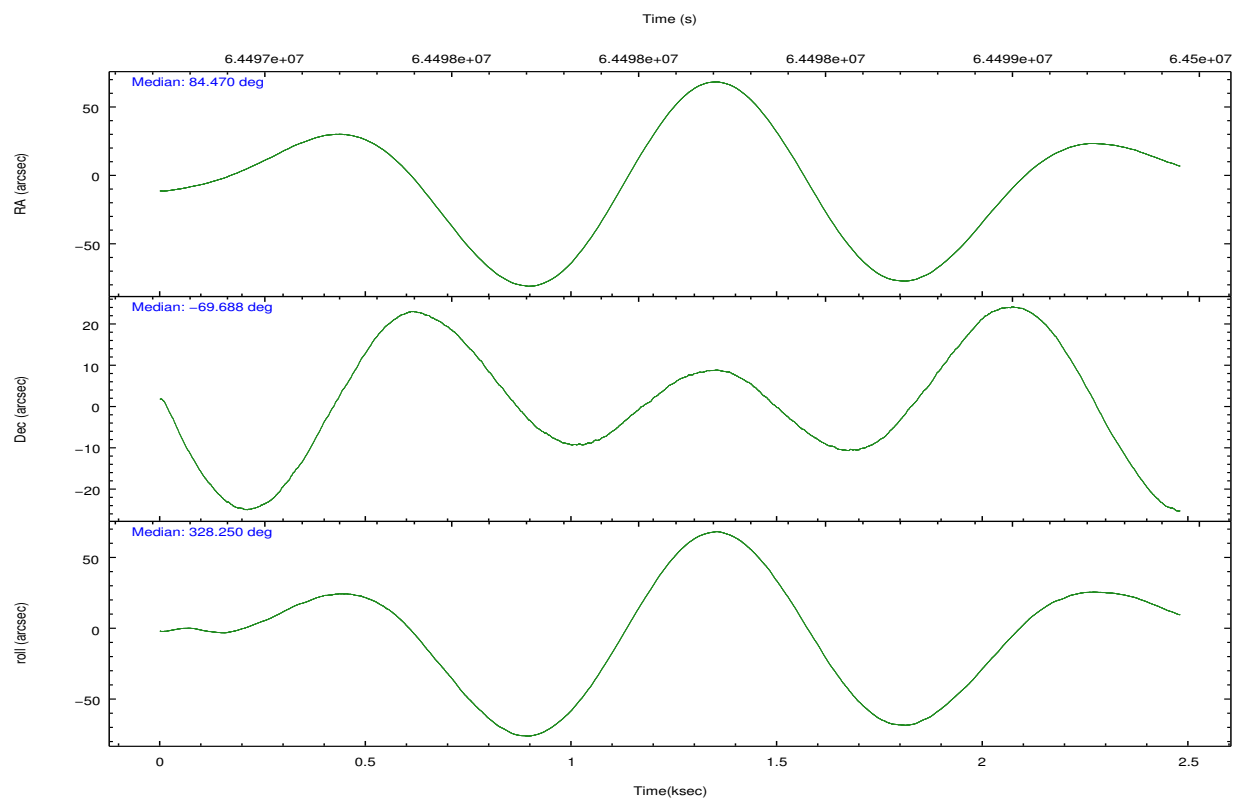
2.2 Compared Parameters

Parameter	Planned	Actual
Instrument	HRC	HRC
Detector	HRC-S	HRC-S
Grating	NONE	NONE
Data mode	OBSERVING	OBSERVING
Observation mode	POINTING	POINTING
Pointing RA	84.383677	84.46768797070264
Pointing Dec	-69.687749	-69.68801241683097
Pointing Roll	328.105882	328.2520101443728
SIM focus pos (mm)	-1.528523	-1.428180813131781
SIM defocus (mm)	0.004813771043328752	0.1051558262725154
SIM translation stage pos (mm)	250.455976	250.466033080201
SIM translation stage offset (mm)	0	-0.01005468664627074
Observation start time	64497324.184000	64496658.274599
Observation start date	2000-01-17T11:54:20	2000-01-17T11:44:18
Observation end time	64499324.184000	64499458.574701
Observation end date	2000-01-17T12:27:40	2000-01-17T12:30:58

Parameter	Planned	Actual
Obspar format version number	6	6
Obspar file type	PREDICTED	ACTUAL
Obspar update status	NONE	UPDATED

2.3 Aspect



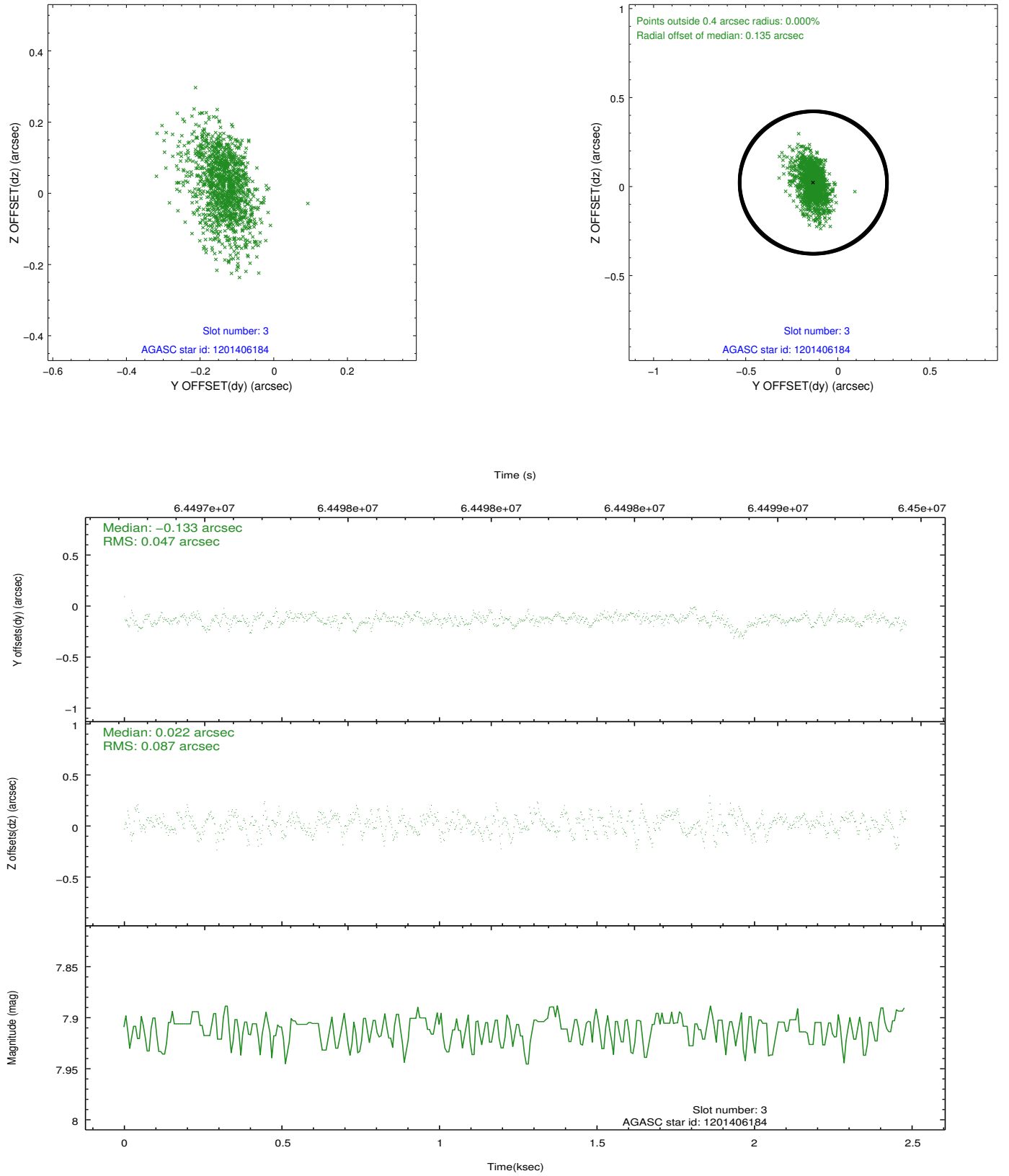


Slot Statistics

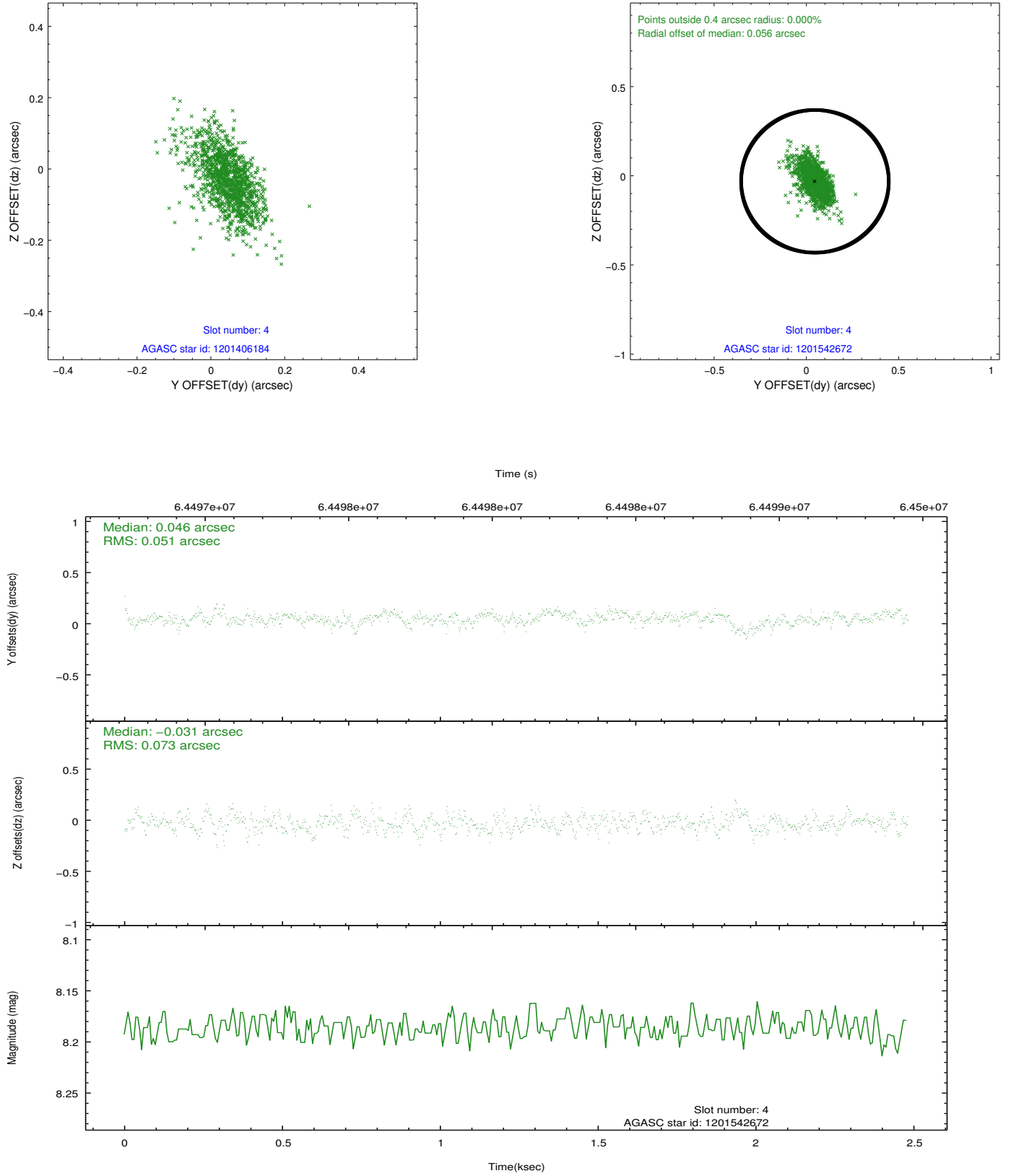
slot	status	id	mag	n_pts	med_dy	med_dz	dr1	dr2	ra	dec	mean_y	mean_z
0	FID	HRC-S-1	6.97	605	0.122	-0.063	0.007	0.012	0.000000	0.000000	-1155.55	-451.79
1	FID	HRC-S-3	6.99	603	0.142	-0.137	0.011	0.022	0.000000	0.000000	-1160.13	576.92
2	FID	HRC-S-4	6.94	603	0.122	-0.097	0.008	0.018	0.000000	0.000000	1240.81	581.16
3	GUIDE	1201406184	7.91	1209	-0.133	0.022	0.102	0.184	82.503234	-69.975517	-1403.22	-2134.43
4	GUIDE	1201542672	8.19	1210	0.046	-0.031	0.089	0.163	84.492488	-69.957531	624.51	-755.37
5	GUIDE	1200883536	9.89	1210	0.079	0.017	0.132	0.220	83.119228	-69.218429	-2256.08	566.37
6	GUIDE	1201017424	10.17	1209	-0.080	-0.118	0.156	0.247	85.854985	-69.248506	766.02	2315.38
7	GUIDE	1201540568	9.96	1208	0.087	0.117	0.165	0.311	85.901764	-70.070643	2321.12	-203.56

2.4 Star Slots

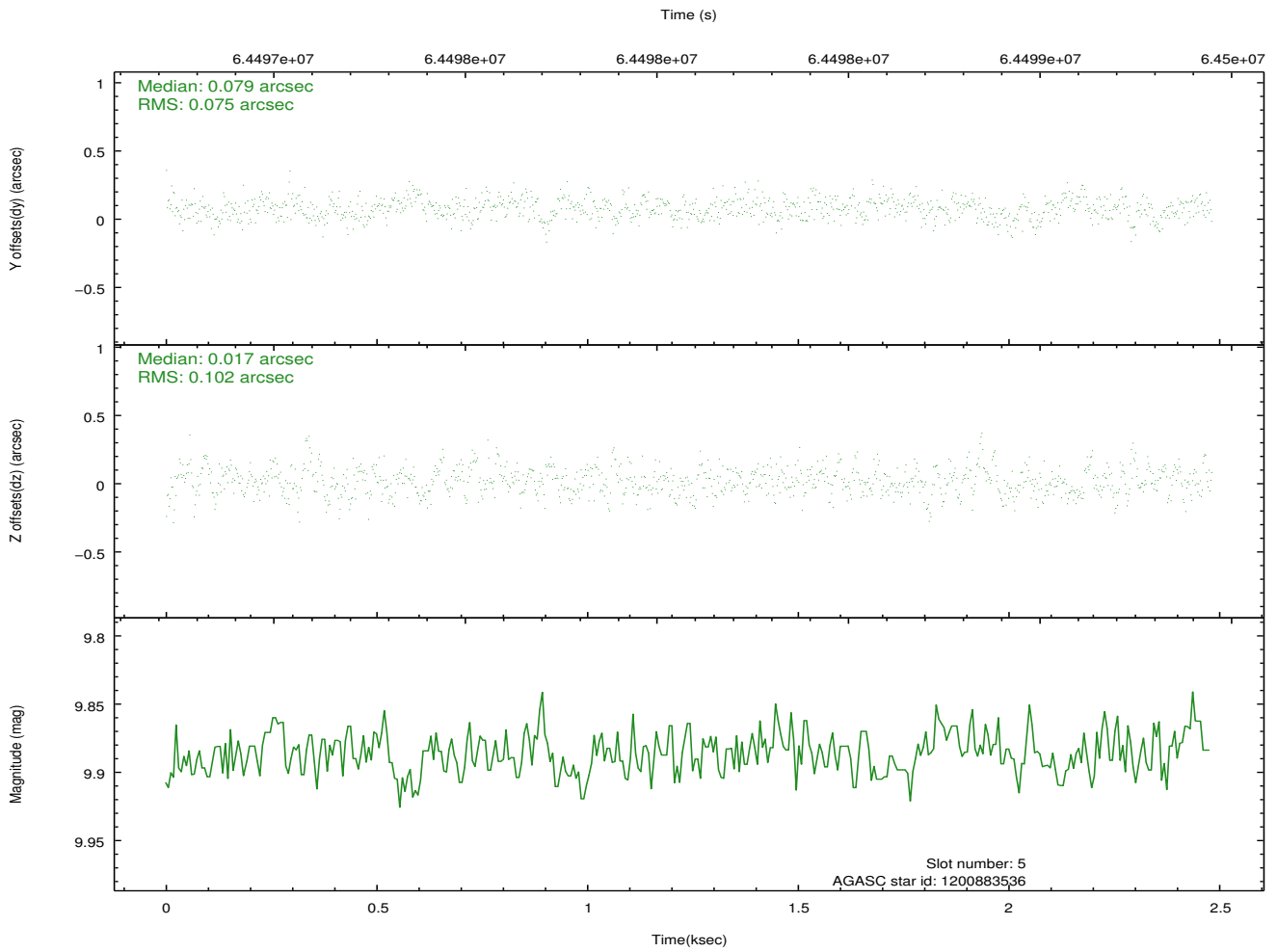
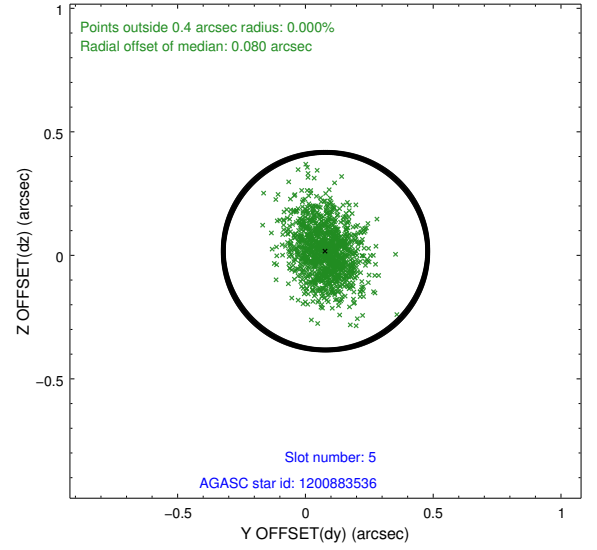
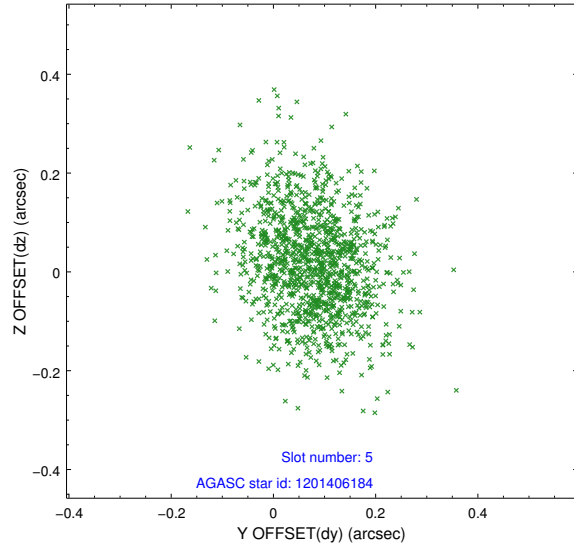
2.4.1 Slot 3



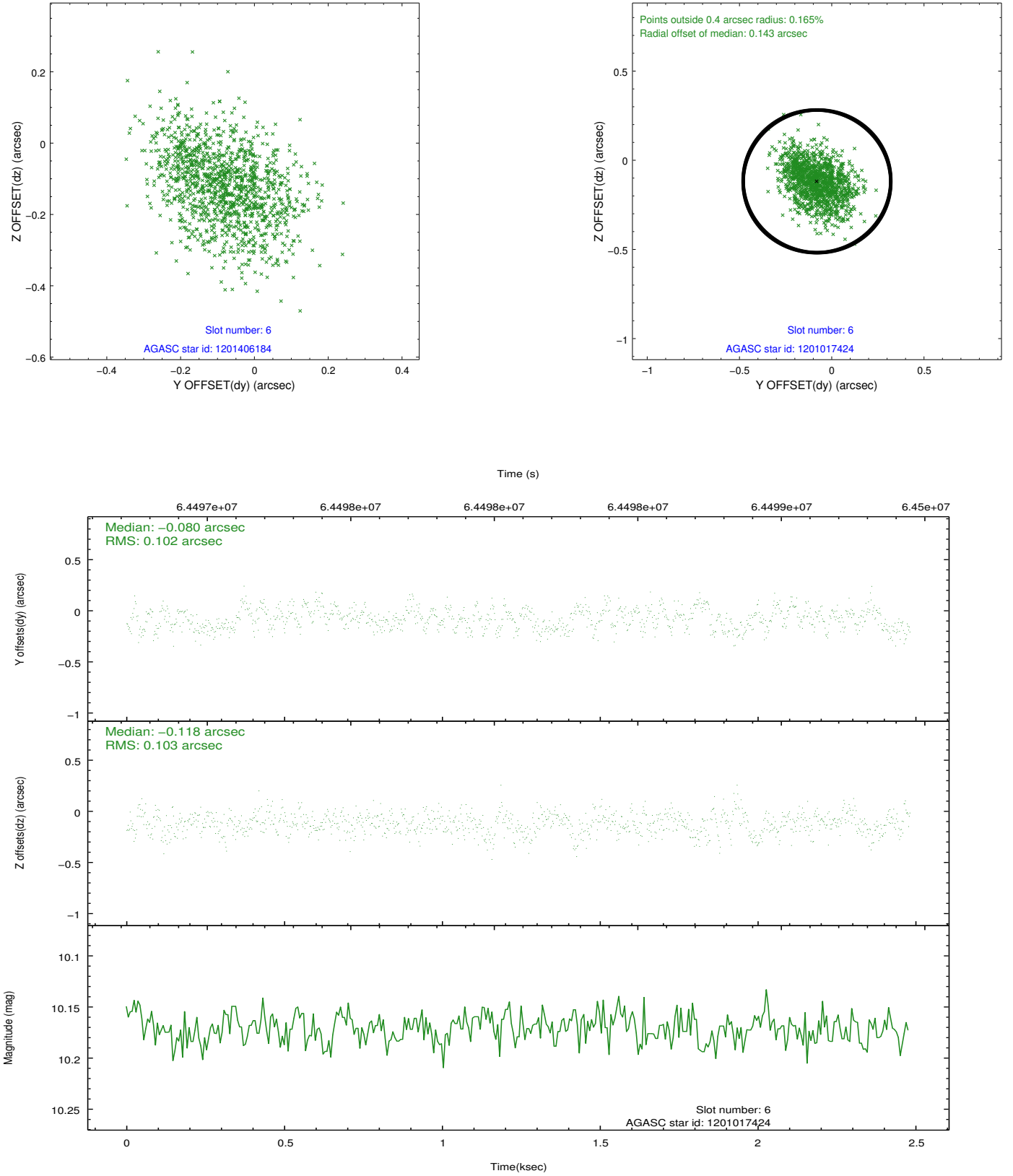
2.4.2 Slot 4



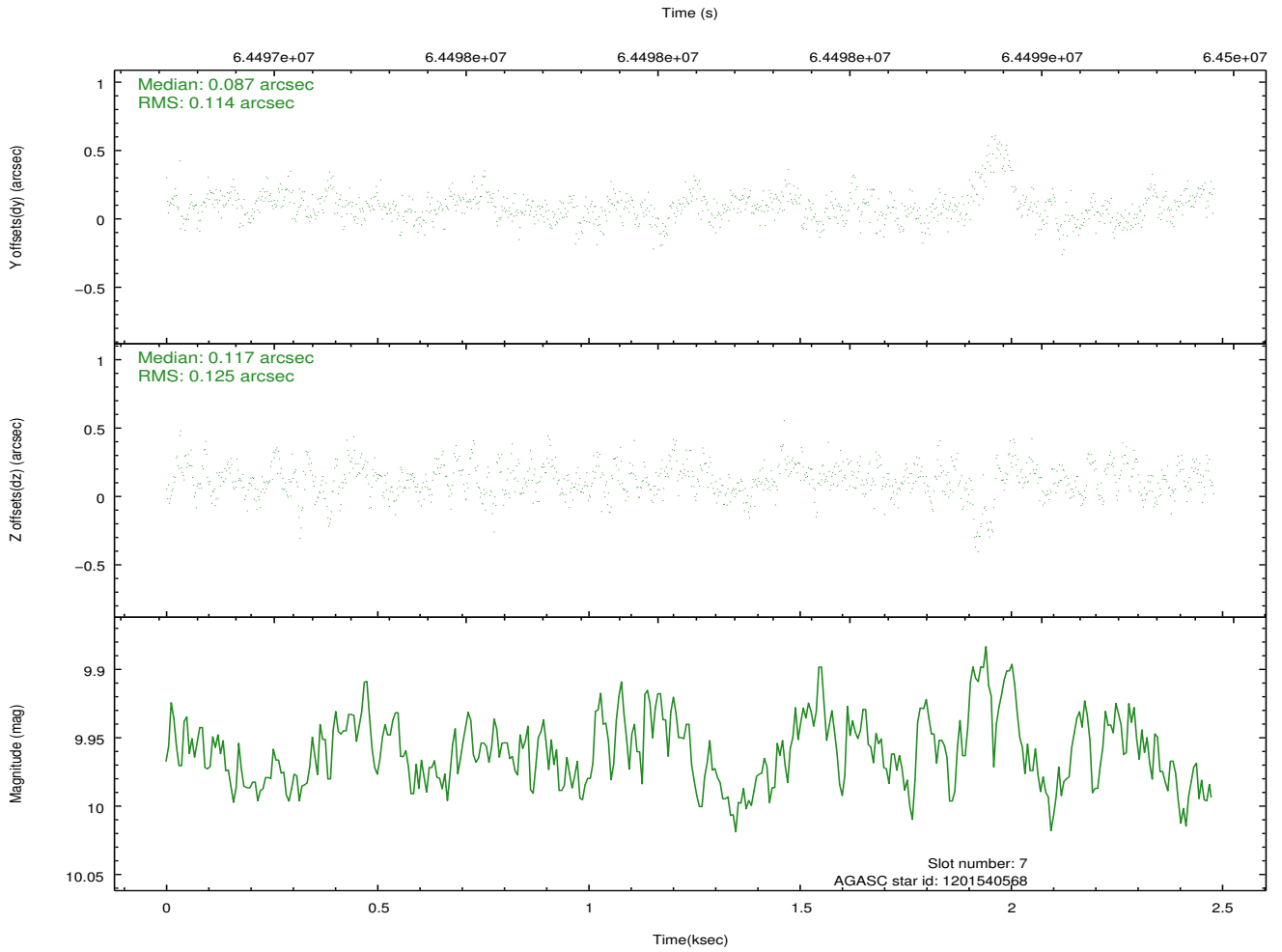
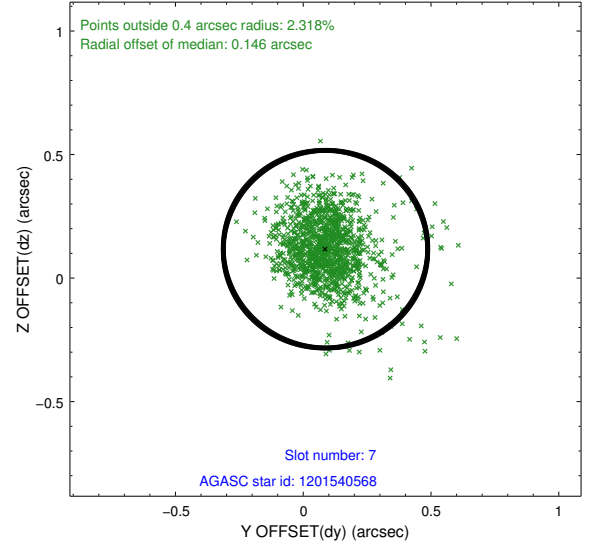
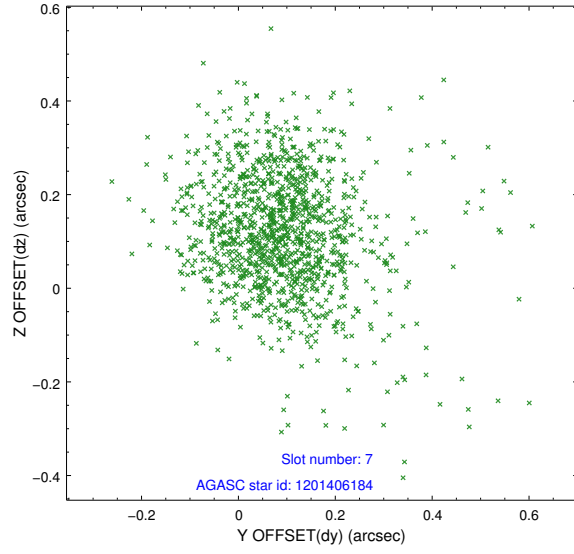
2.4.3 Slot 5



2.4.4 Slot 6

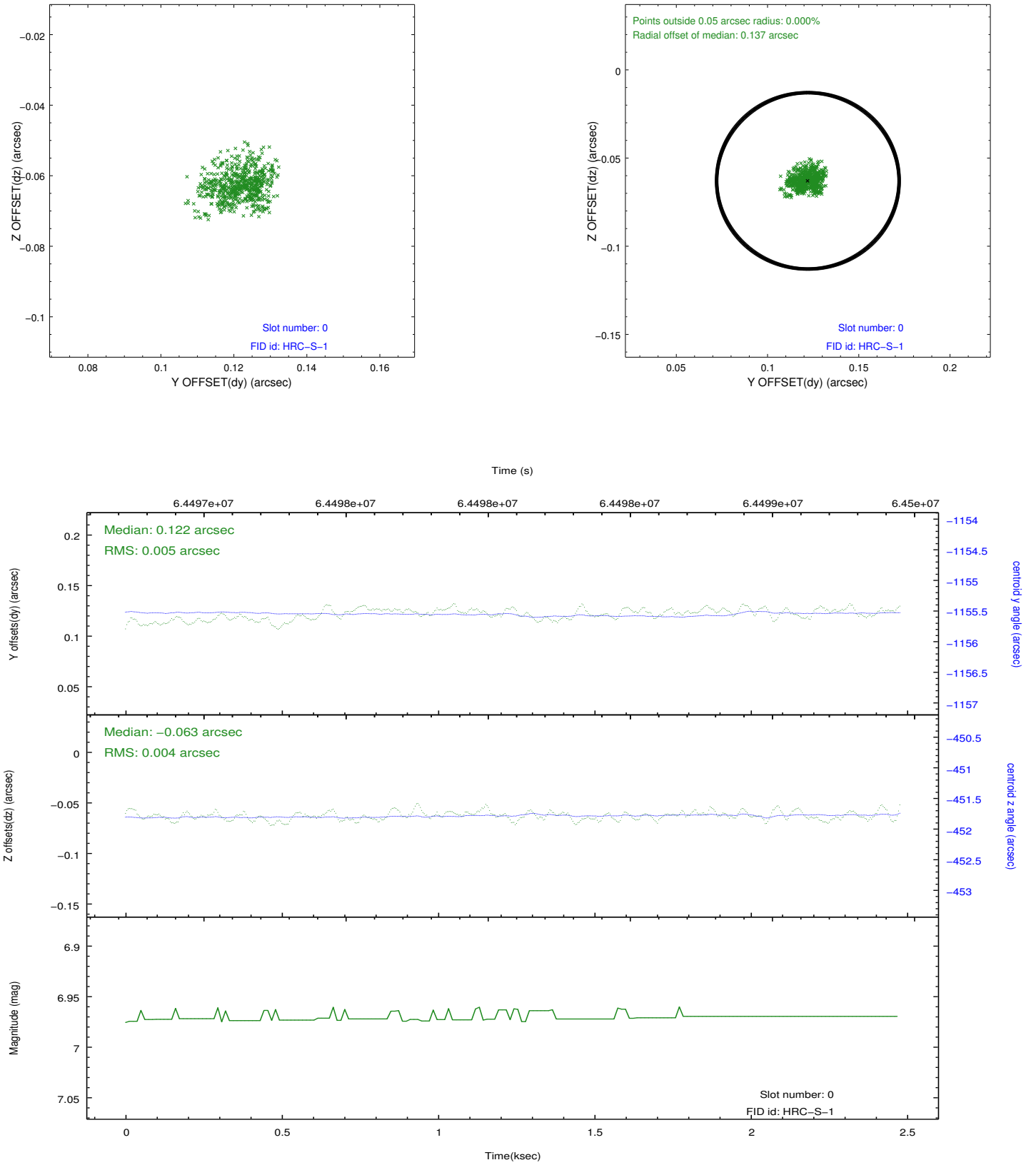


2.4.5 Slot 7

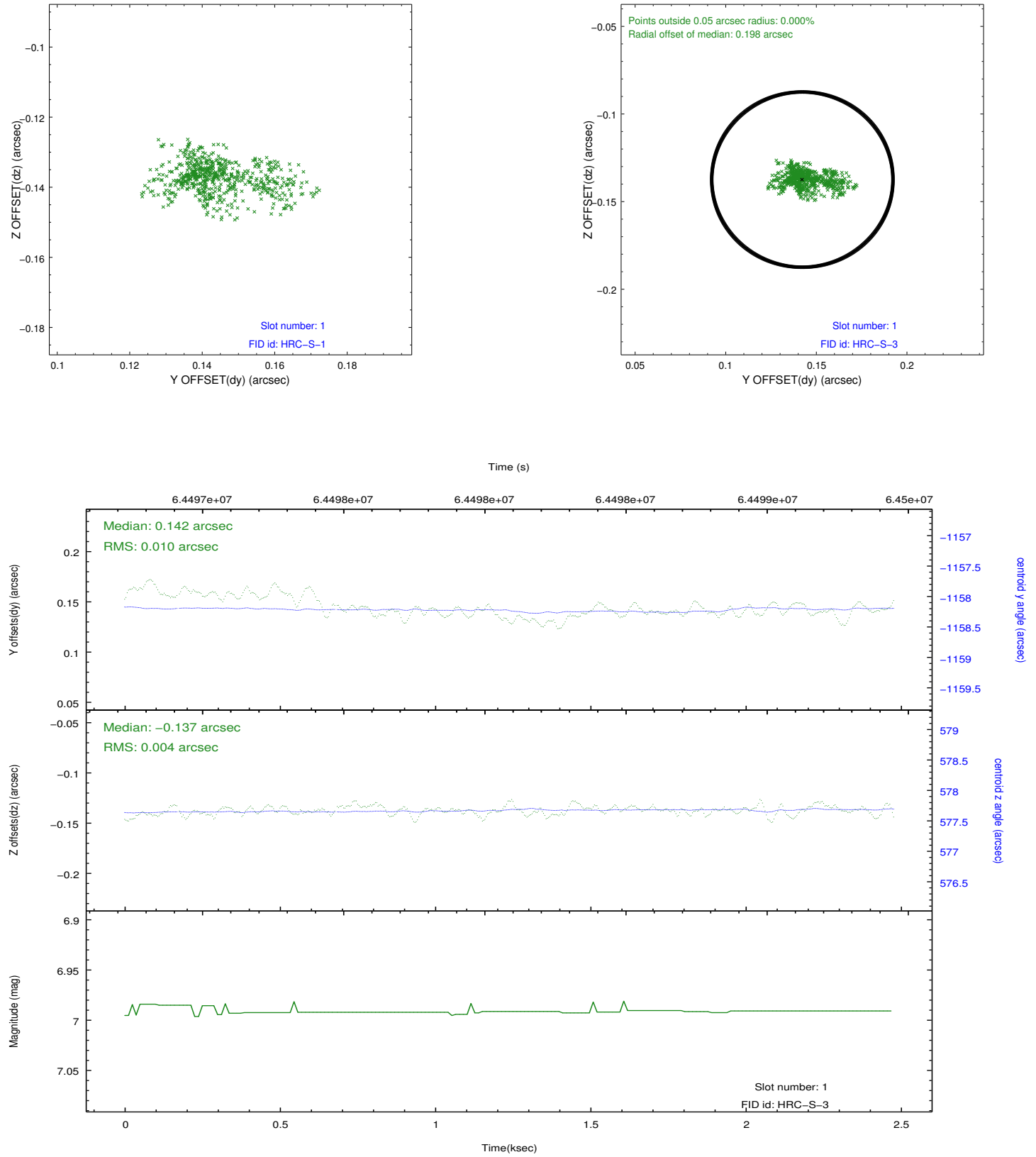


2.5 FID Slots

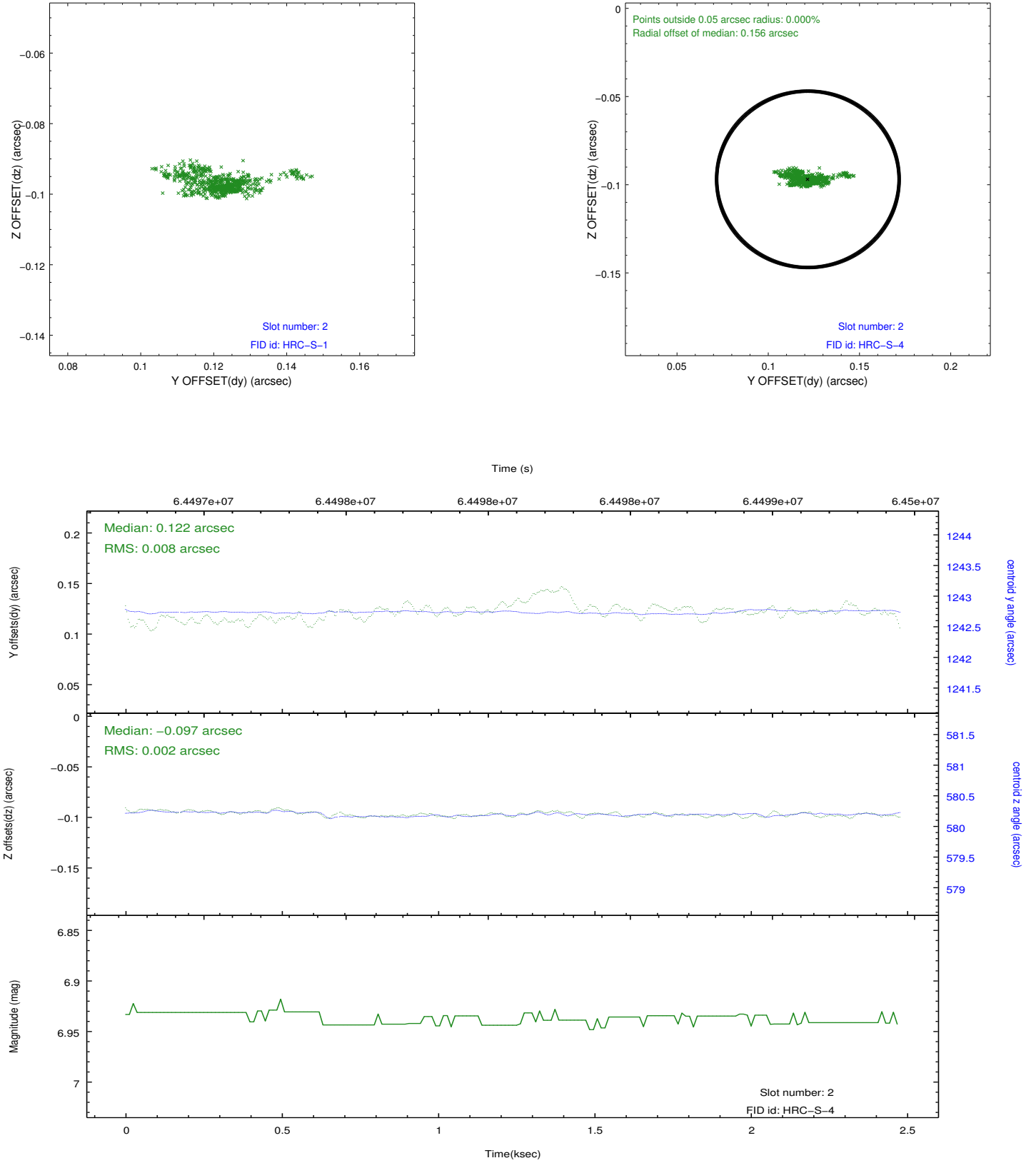
2.5.1 Slot 0



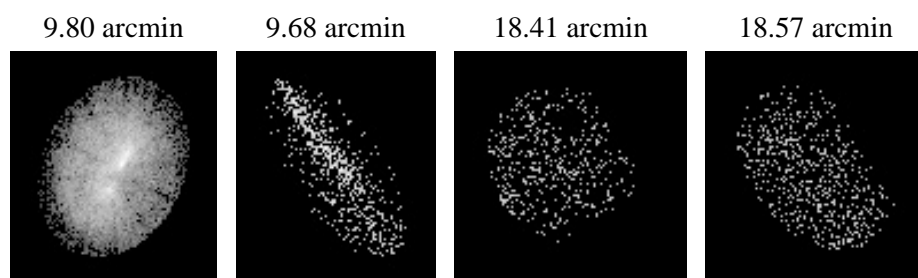
2.5.2 Slot 1



2.5.3 Slot 2



3 Point Sources



A Summary

A.1 Status

V&V Scientist	Joy Nichols
V&V Date (YYYY-MM-DD)	2009.12.03
V&V Edition	1
V&V Disposition and Status	OK
V&V Charge Time	2.049

A.2 Comments

Charge time for this ObsId remains at original value of 2.049 ks,
although
with the current processing the charge time would have been 2.204 ksec.
Target is off-axis.