

V&V Reference Report

L2 ASCDS Version : 8.4.5

Observation 10751 - L2 Version 2
Chandra X-Ray Center

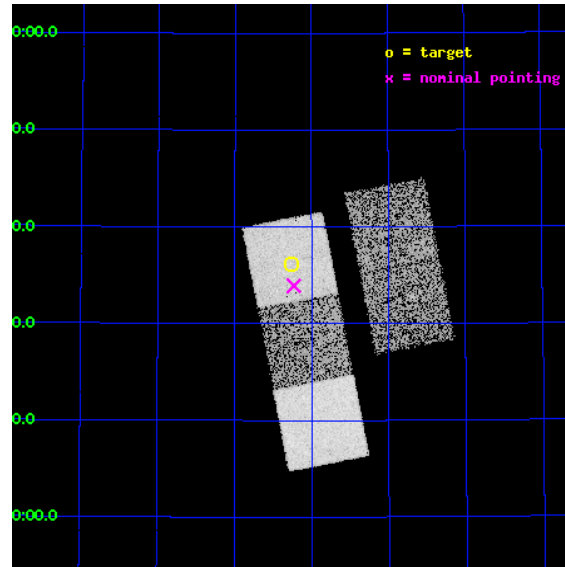
L2 Processing Date : Jun 10 2012

Contents

1	Front	2
2	OBI	3
2.1	OBI	3
2.1.1	Images	3
2.1.2	Bias	3
2.1.3	Parameters	4
2.1.4	Events	4
2.2	Compared Parameters	5
2.3	Aspect	6
2.4	Star Slots	9
2.4.1	Slot 3	9
2.4.2	Slot 4	10
2.4.3	Slot 5	11
2.4.4	Slot 6	12
2.4.5	Slot 7	13
2.5	FID Slots	14
2.5.1	Slot 0	14
2.5.2	Slot 1	15
2.5.3	Slot 2	16
A	Summary	17
A.1	Status	17
A.2	Comments	17

1 Front

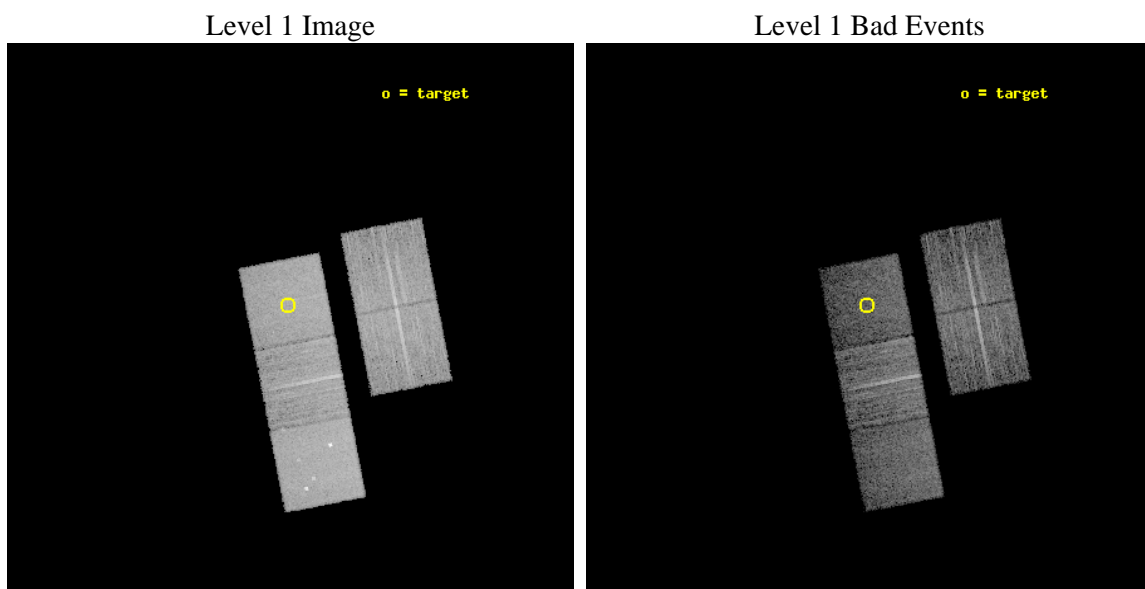
seq_num	900898	Sequence number
obs_id	10751	Observation id
title	The Origin and Evolution of Fossil Groups	Proposal title
observer	Professor Gordon Garmire	Principal investigator
object	SDSS J1411+5736	Source name
dtcycle	0	
cycle	P	events from which exps? Prim/Second/Both
ra_targ	212.81625	Observer's specified target RA [deg]
dec_targ	57.6025	Observer's specified target Dec [deg]
ra_nom	212.80740842412	Nominal RA [deg]
dec_nom	57.565199200259	Nominal Dec [deg]
roll_nom	259.04169486946	Nominal Roll [deg]
revision	2	Processing version of data
ontime	7035.7821660042	Sum of GTIs [s]
livetime	6943.8544923379	Livetime [s]
ontime2	7035.618005991	Sum of GTIs [s]
ontime3	7035.6590459943	Sum of GTIs [s]
ontime5	7035.7411260009	Sum of GTIs [s]
ontime6	7032.5591156483	Sum of GTIs [s]
ontime7	7035.7821660042	Sum of GTIs [s]
l2events	86746	Number of level 2 events



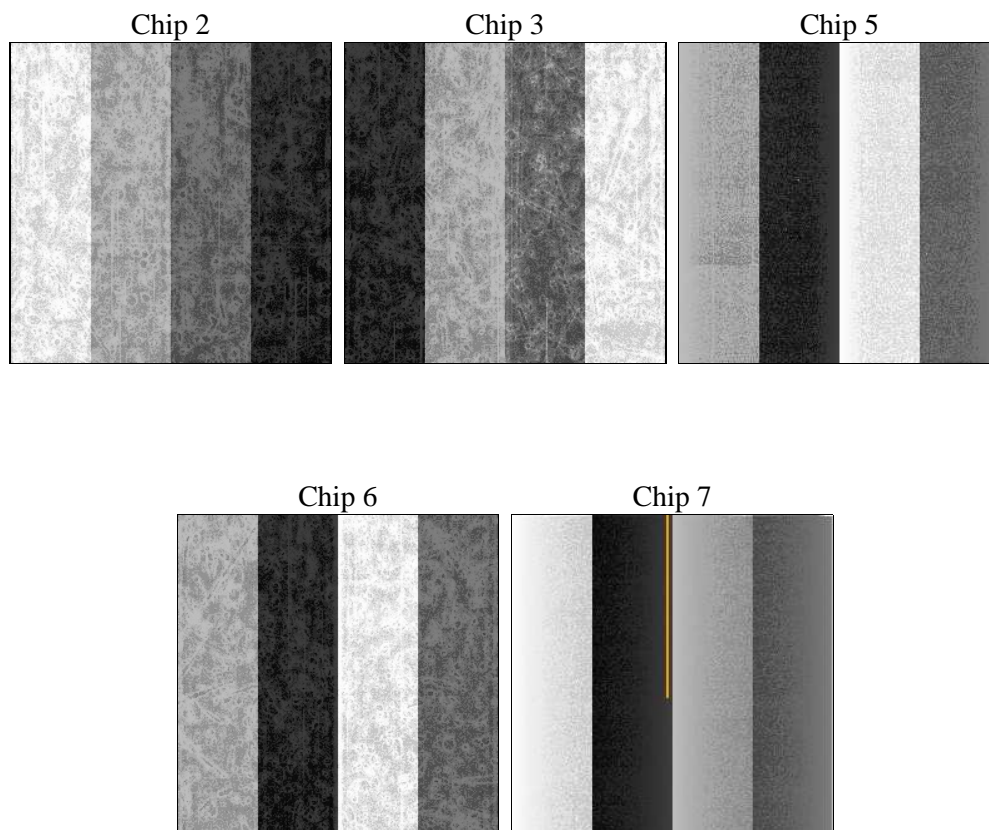
2 OBI

2.1 OBI

2.1.1 Images



2.1.2 Bias



2.1.3 Parameters

obi_num	0	Obi number	sched_exp_time	7000.000000	[s] Scheduled observation exposure time
ascdsver	8.4.5	Processing system revision	ontime	7035.7821660042	Sum of GTIs [s]
caldsver	4.4.10	 	ontime2	7035.618005991	Sum of GTIs [s]
date	2012-06-10T23:56:37	Date and time of file creation	ontime3	7035.6590459943	Sum of GTIs [s]
revision	2	Processing version of data	ontime5	7035.7411260009	Sum of GTIs [s]
			ontime6	7032.5591156483	Sum of GTIs [s]
			ontime7	7035.7821660042	Sum of GTIs [s]
			l1events	336827	Number of level 1 events

2.1.4 Events

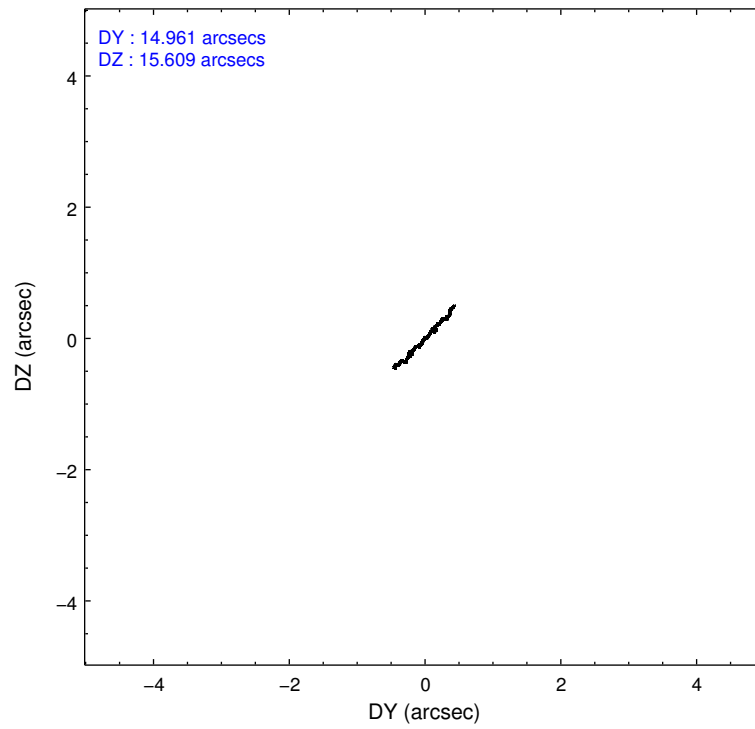
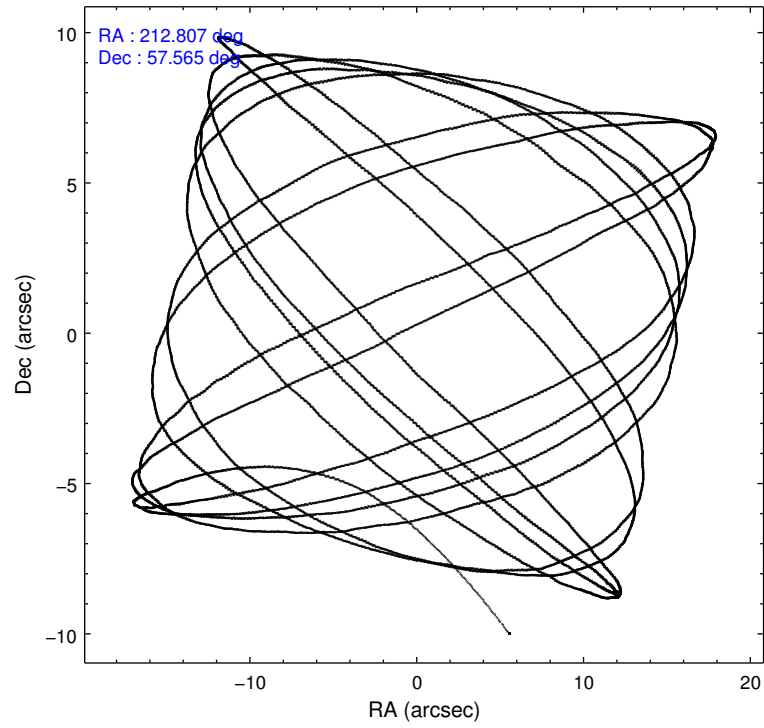
	ccd 2	ccd 3	ccd 5	ccd 6	ccd 7
level 1 events	60308	56841	87505	63033	69140
rejected events	54330	51299	42772	56658	37303
rejected %	90%	90%	48%	89%	53%

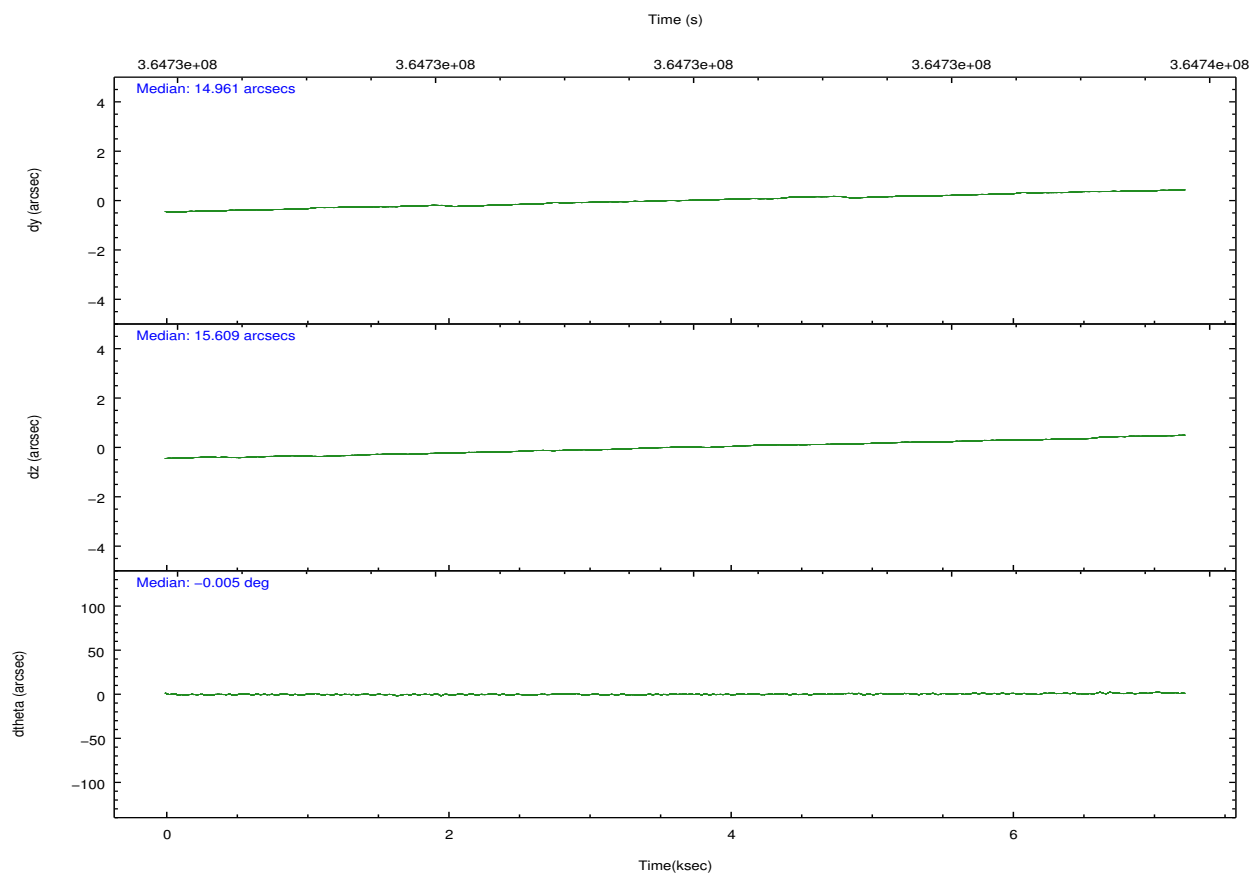
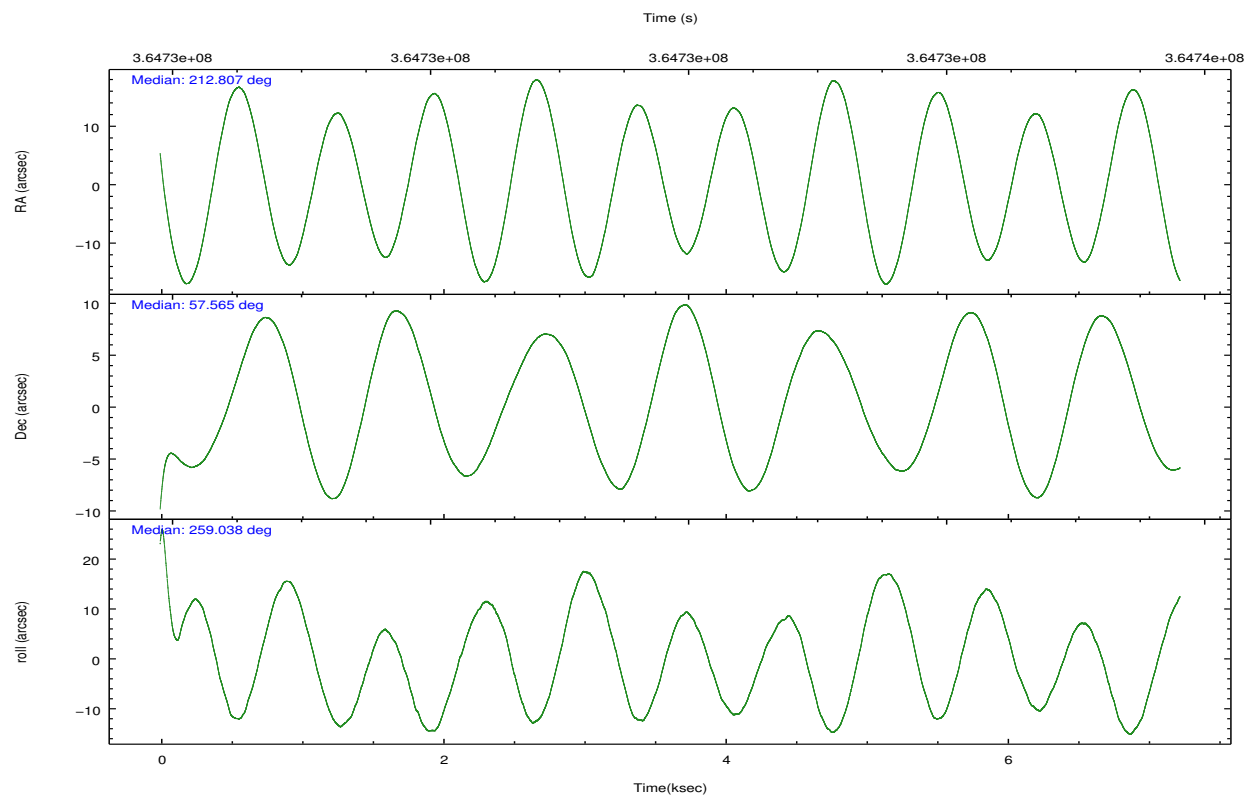
	ccd 2	ccd 3	ccd 5	ccd 6	ccd 7
grade 0 events	2086	1984	5820	2226	3178
	3%	3%	6%	3%	4%
grade 1 events	36	36	204	39	99
	0%	0%	0%	0%	0%
grade 2 events	1479	1221	13103	1421	6527
	2%	2%	14%	2%	9%
grade 3 events	635	596	1771	699	2882
	1%	1%	2%	1%	4%
grade 4 events	659	609	1752	708	2941
	1%	1%	2%	1%	4%
grade 5 events	1934	2495	6574	2398	7358
	3%	4%	7%	3%	10%
grade 6 events	1121	1135	22308	1323	16326
	1%	1%	25%	2%	23%
grade 7 events	52358	48765	35973	54219	29829
	86%	85%	41%	86%	43%

2.2 Compared Parameters

Parameter	Planned	Actual	Parameter	Planned	Actual
Instrument	ACIS	ACIS	Obspar format version number	7	7
Detector	ACIS-23567	ACIS-23567	Obspar file type	PREDICTED	ACTUAL
Grating	NONE	NONE	Obspar update status	NONE	UPDATED
Data mode	VFAINT	VFAINT	CCD I0 on	N	N
Observation mode	POINTING	POINTING	CCD I1 on	N	N
[deg] Pointing RA	212.790157	212.8074084241177	CCD I2 on	O1	Y
[deg] Pointing Dec	57.590968	57.56519920025902	CCD I3 on	O2	Y
[deg] Pointing Roll	258.899563	259.0416948694586	CCD S0 on	N	N
[mm] SIM focus pos	-0.684267	-0.6828225247311905	CCD S1 on	Y	Y
[mm] SIM defocus	0	0.001444936568705701	CCD S2 on	Y	Y
[mm] SIM translation stage pos	-190.132523	-190.1400660498719	CCD S3 on	Y	Y
[mm] SIM translation stage offset	0	0.00754346686406393	CCD S4 on	N	N
[s] Observation start time (MET)	364728472.184000	364727507.67193	CCD S5 on	N	N
Observation start date	2009-07-23T09:26:46	2009-07-23T09:11:47	Number of optional ACIS chips dropped	0	0
[s] Observation end time (MET)	364735472.184000	364736482.57238	On-chip summing requested	N	N
Observation end date	2009-07-23T11:23:26	2009-07-23T11:41:22	Subarray requested	NONE	NONE
Read mode	TIMED	TIMED	Alternating exposures requested	N	N
			[s] Primary exposure time	0.000000	3.1

2.3 Aspect



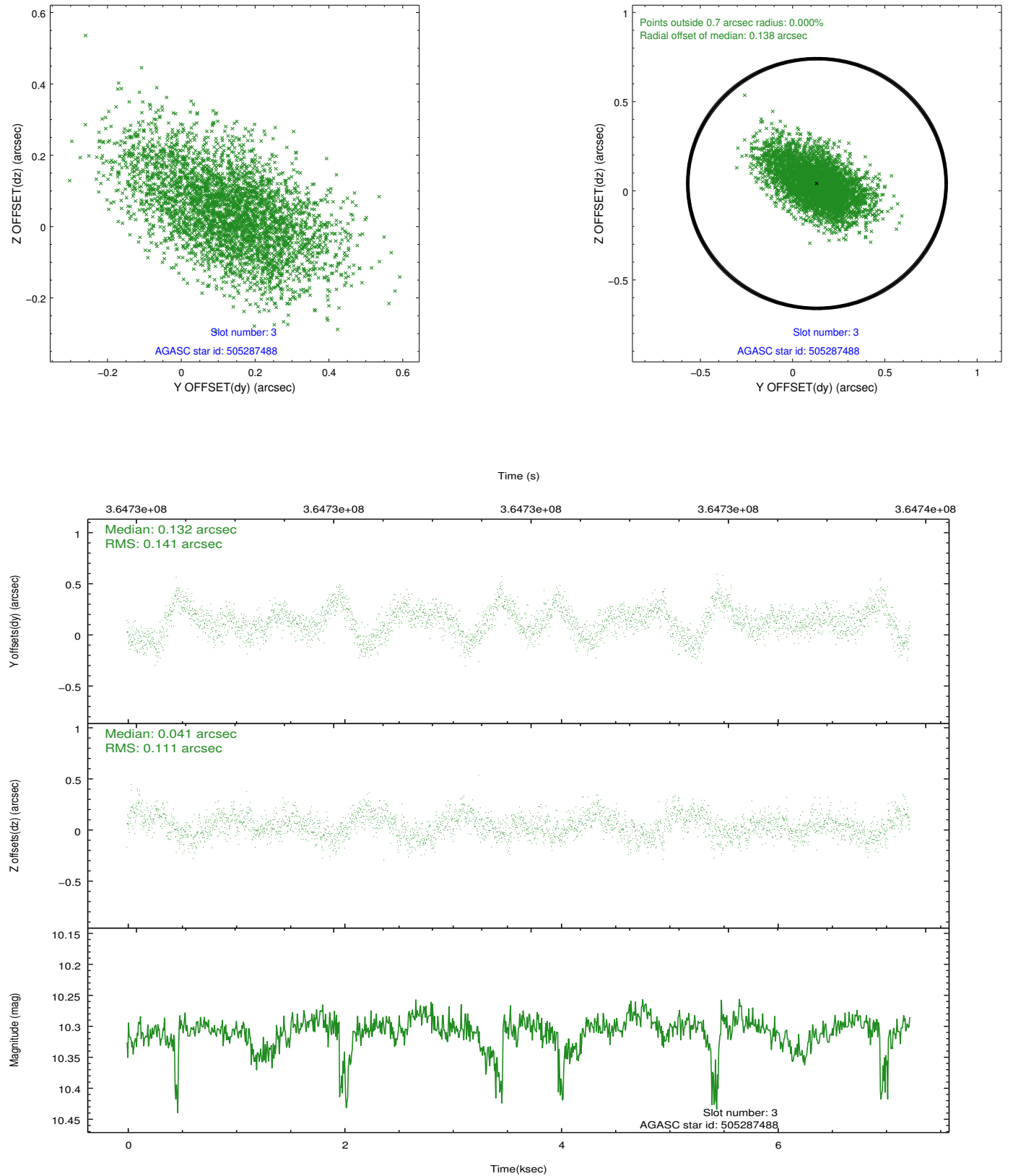


Slot Statistics

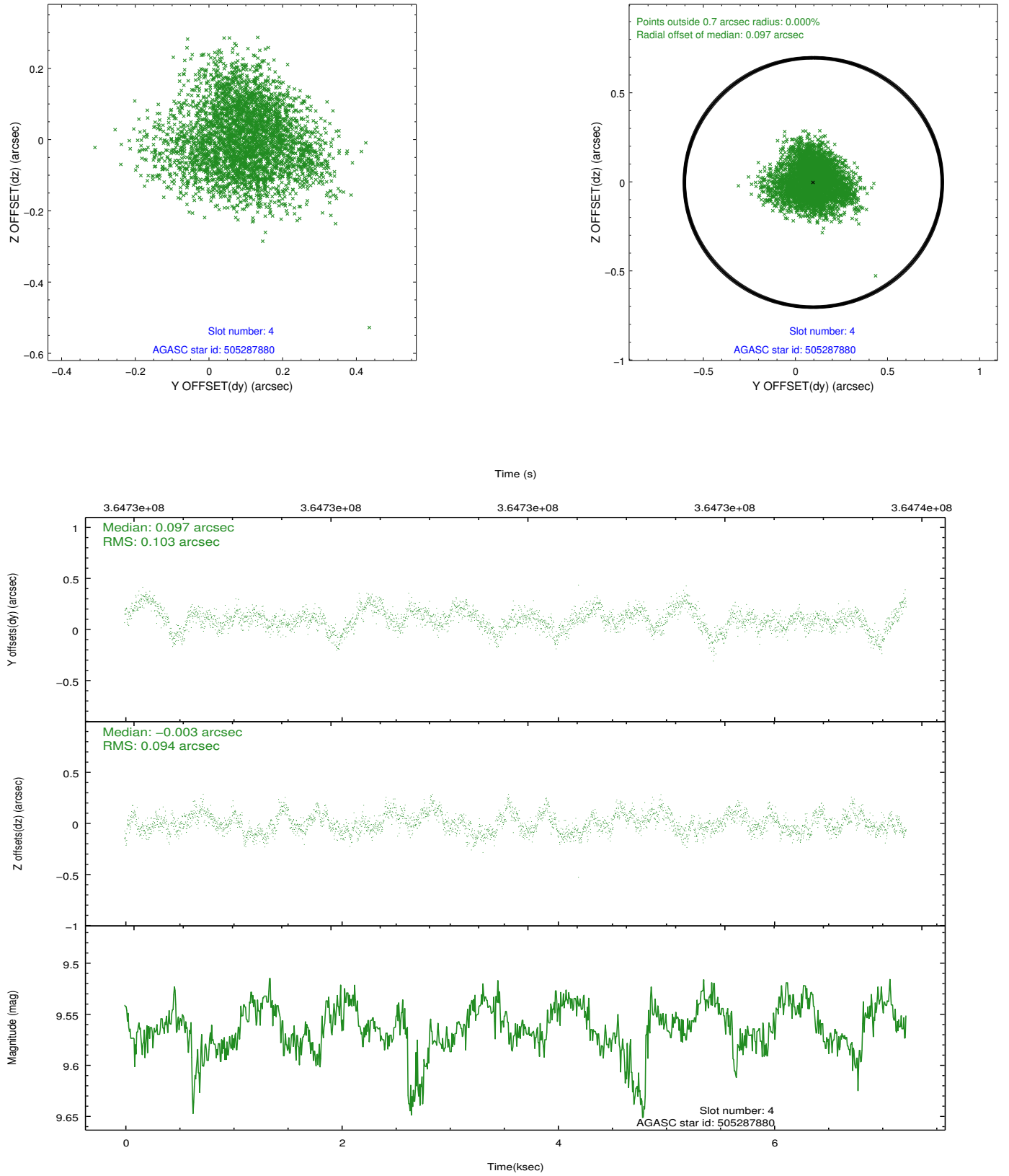
slot	status	id	mag	n_pts	med_dy	med_dz	dr1	dr2	ra	dec	mean_y	mean_z
0	FID	ACIS-S-4	6.96	1763	0.131	-0.004	0.006	0.010	0.000000	0.000000	2145.56	171.69
1	FID	ACIS-S-5	6.99	1763	-0.173	-0.007	0.011	0.018	0.000000	0.000000	-1819.92	165.19
2	FID	ACIS-S-6	7.10	1763	0.013	0.024	0.011	0.017	0.000000	0.000000	392.83	808.99
3	GUIDE	505287488	10.31	3519	0.132	0.041	0.188	0.322	211.702098	57.193984	1794.26	-1811.23
4	GUIDE	505287880	9.56	3516	0.097	-0.003	0.150	0.236	212.291126	57.390153	892.88	-811.68
5	GUIDE	505288280	10.11	3519	0.018	-0.101	0.179	0.313	213.243235	56.942289	2117.51	1322.02
6	GUIDE	505288816	9.76	3521	-0.111	-0.044	0.145	0.226	211.818991	57.476957	752.19	-1767.07
7	GUIDE	506593360	8.20	3526	-0.141	0.099	0.098	0.157	214.109057	58.083127	-2246.76	2115.79

2.4 Star Slots

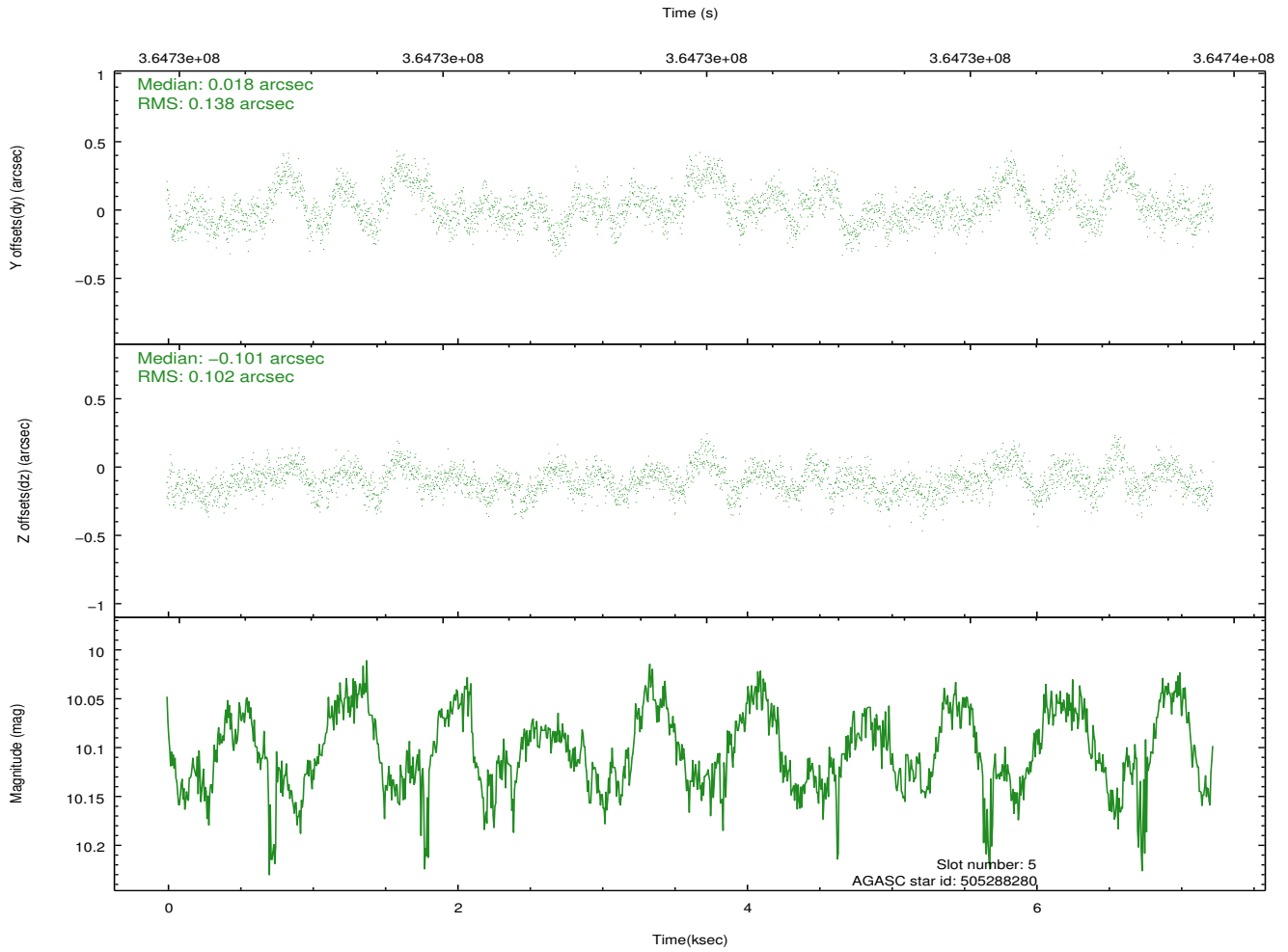
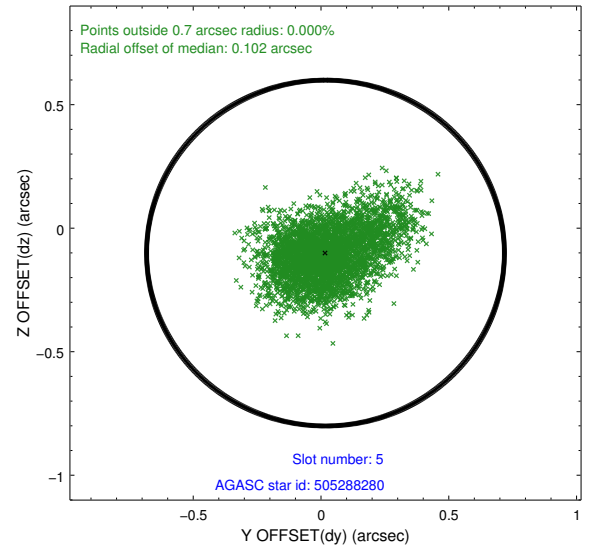
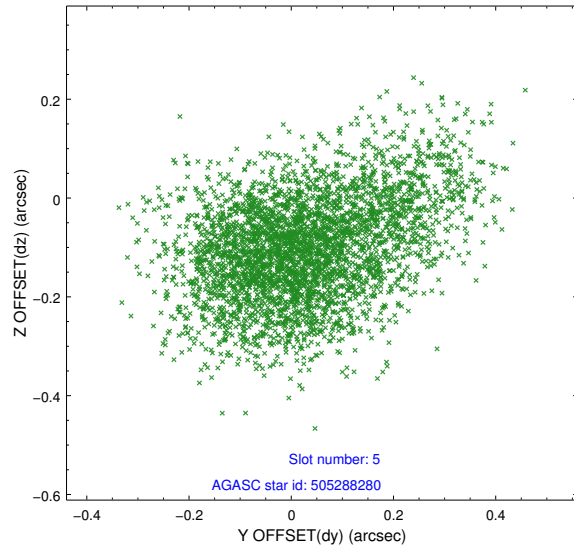
2.4.1 Slot 3



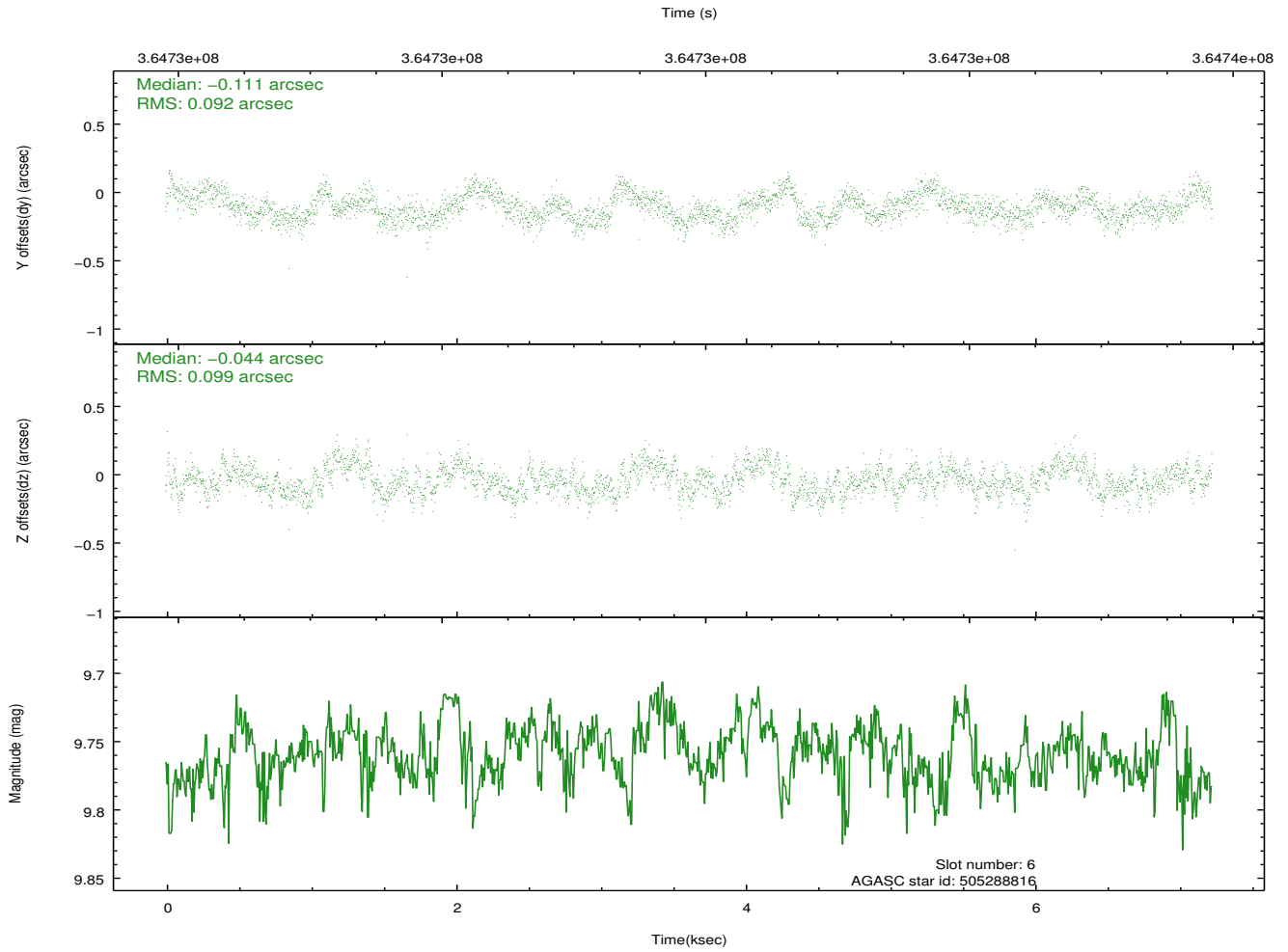
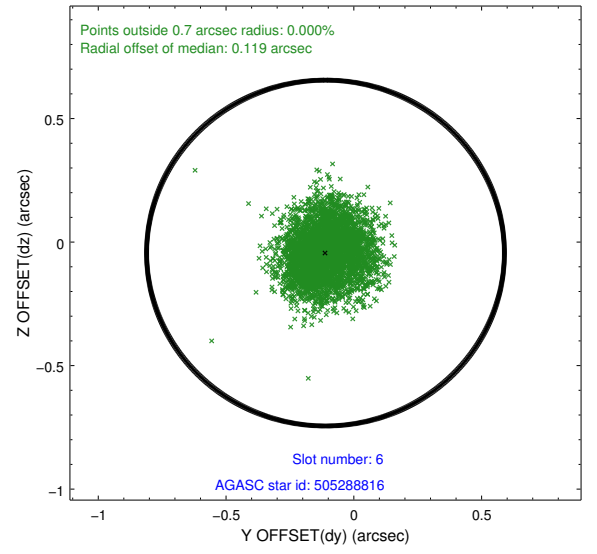
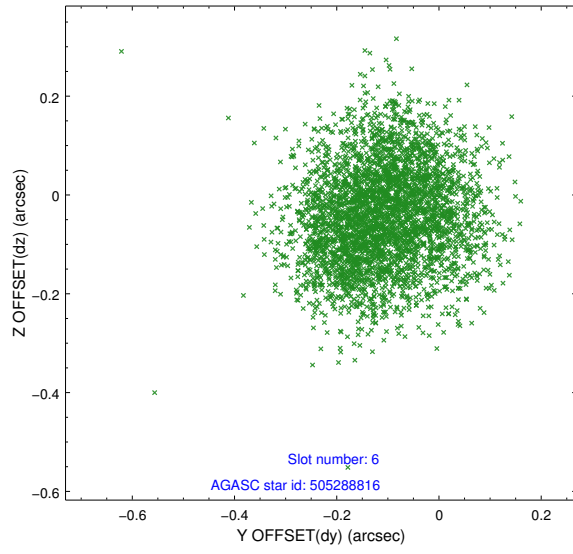
2.4.2 Slot 4



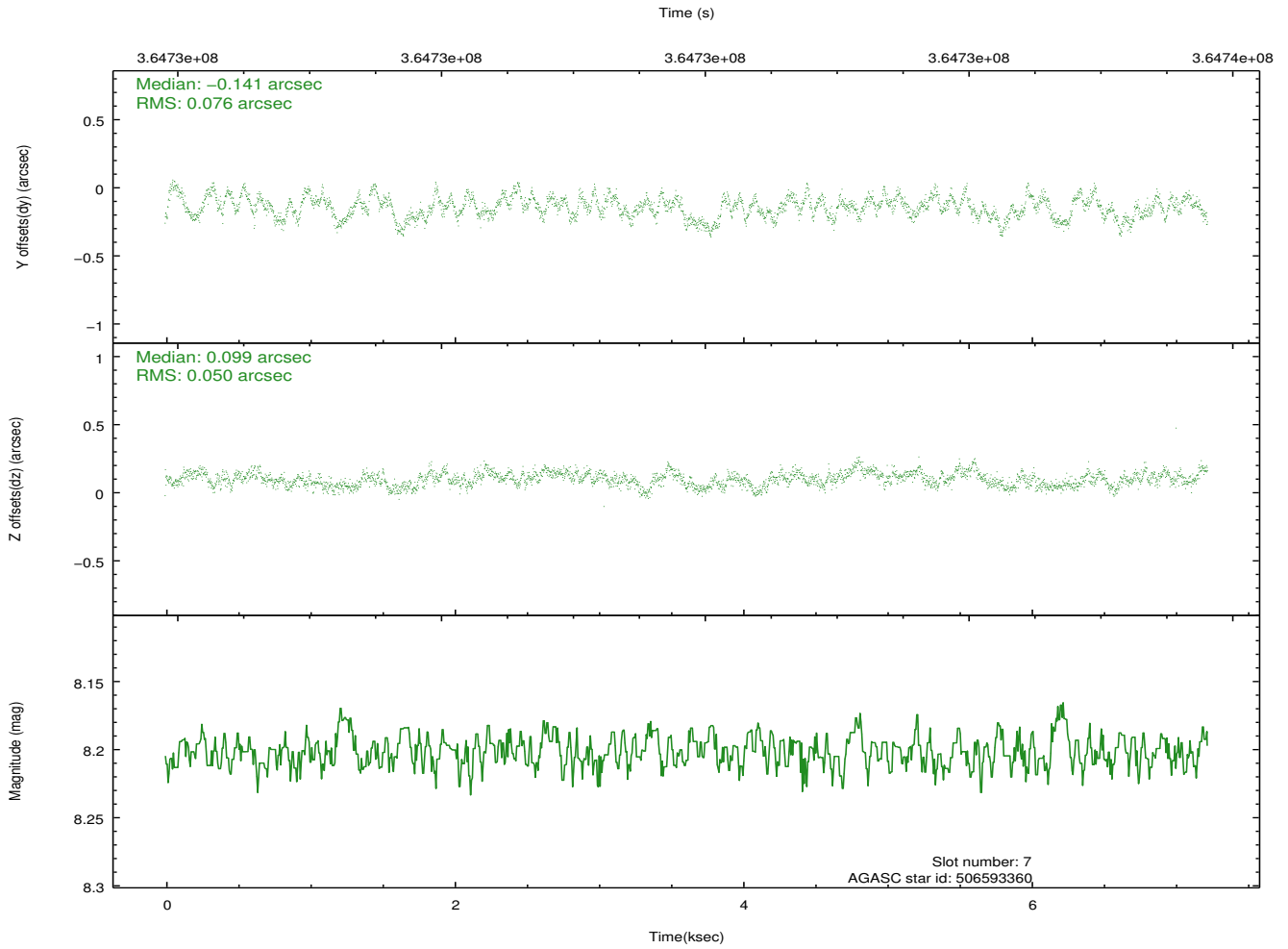
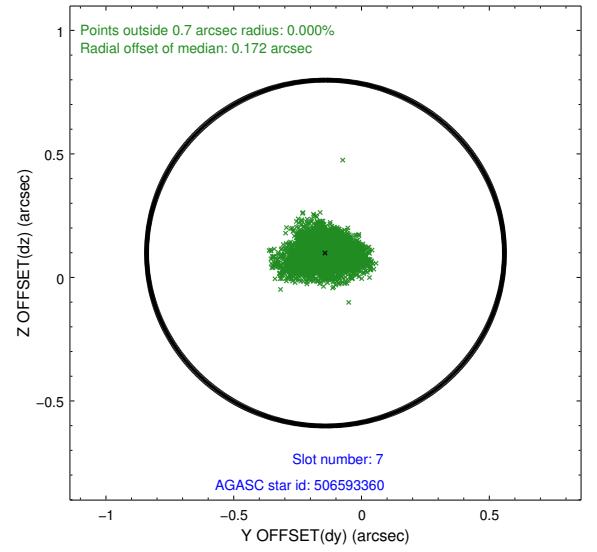
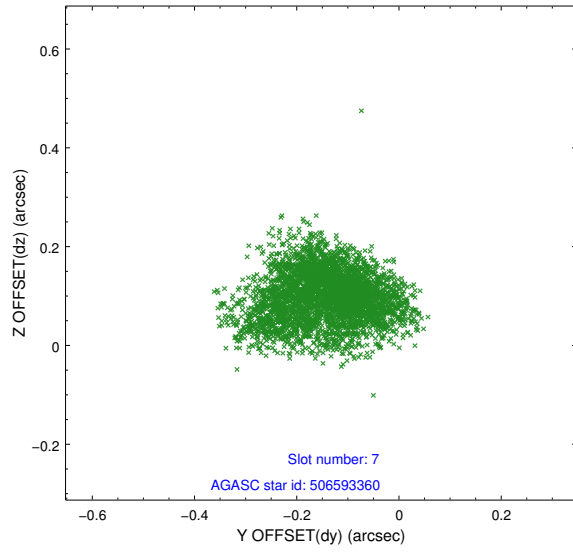
2.4.3 Slot 5



2.4.4 Slot 6

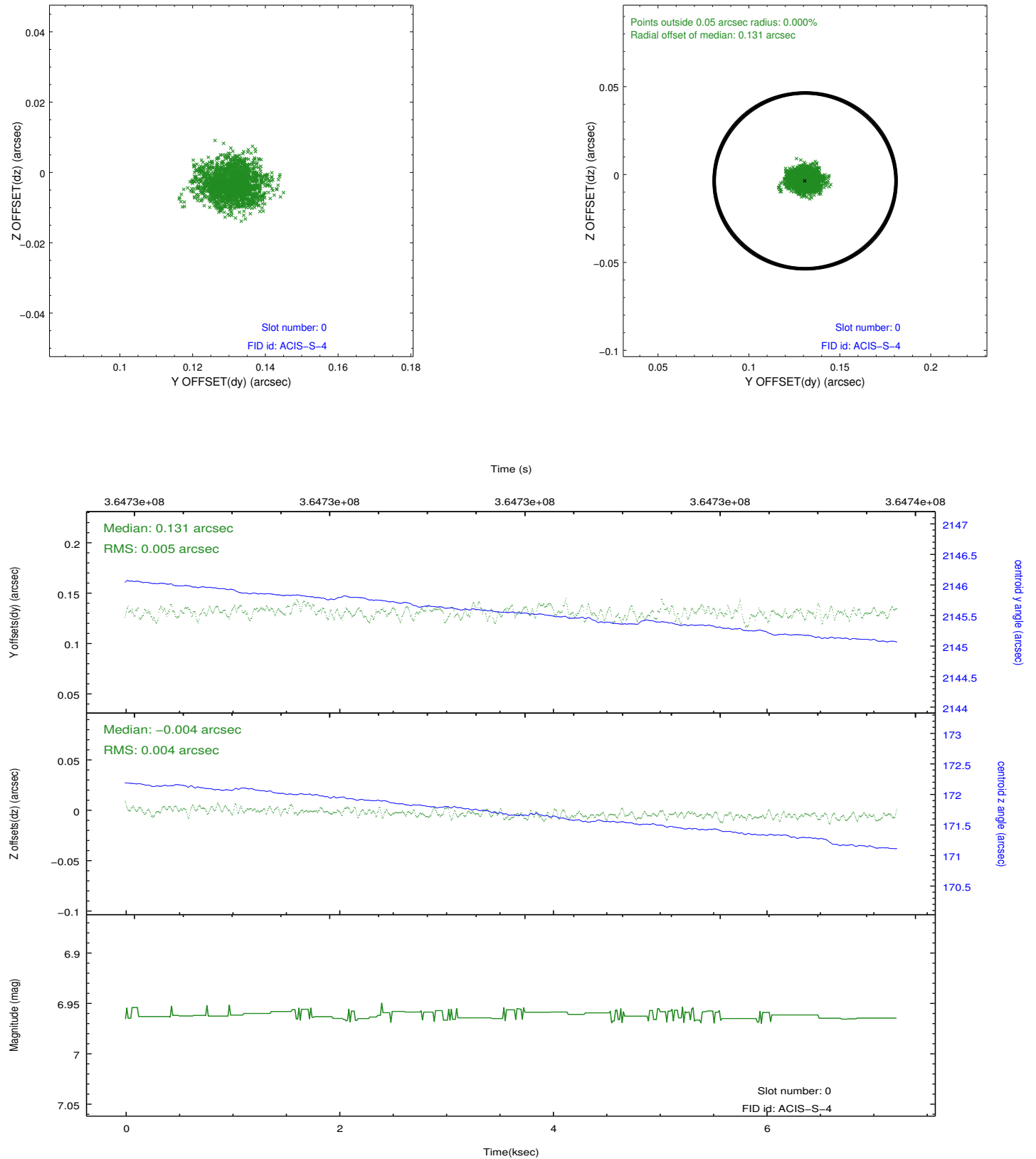


2.4.5 Slot 7

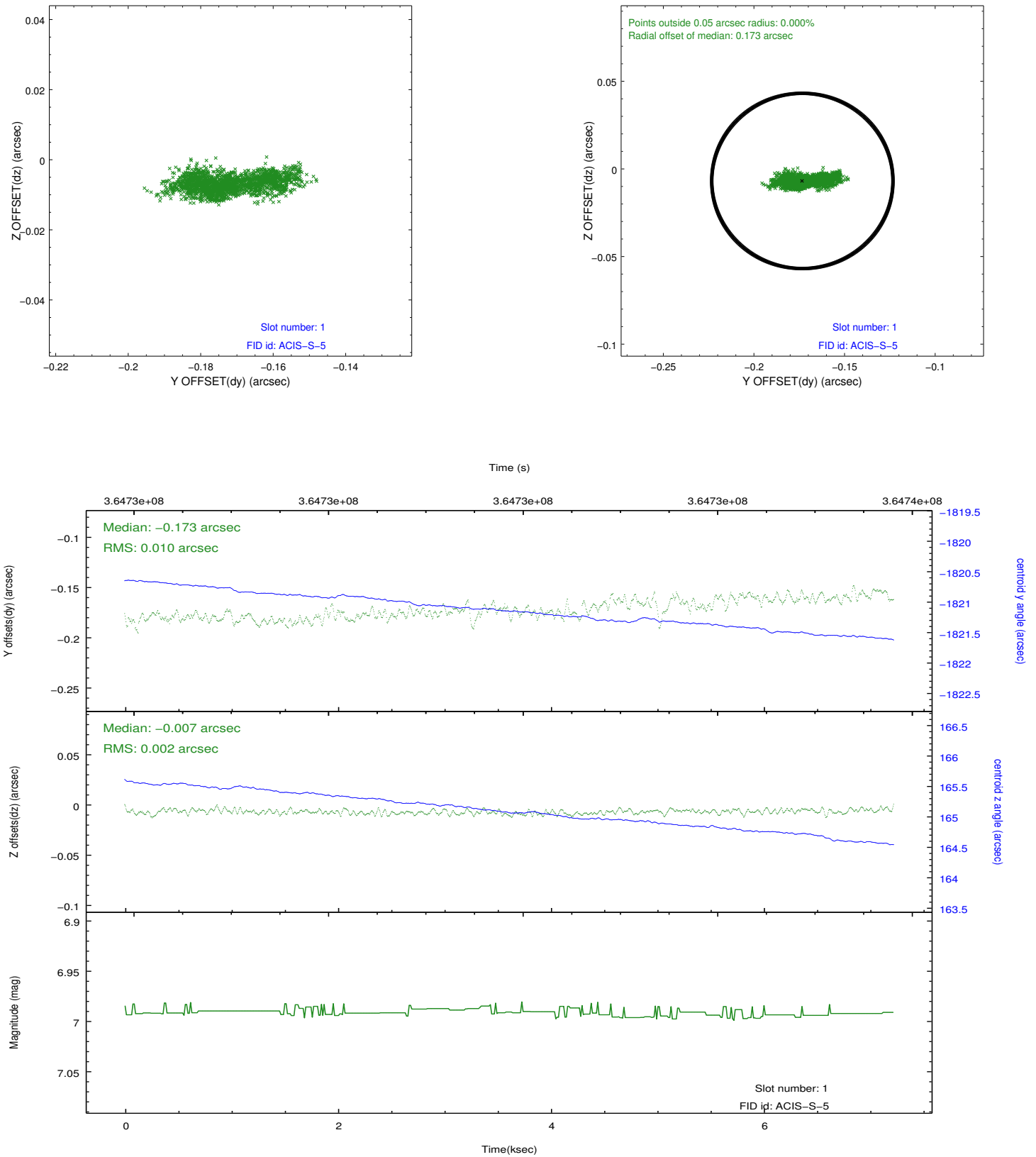


2.5 FID Slots

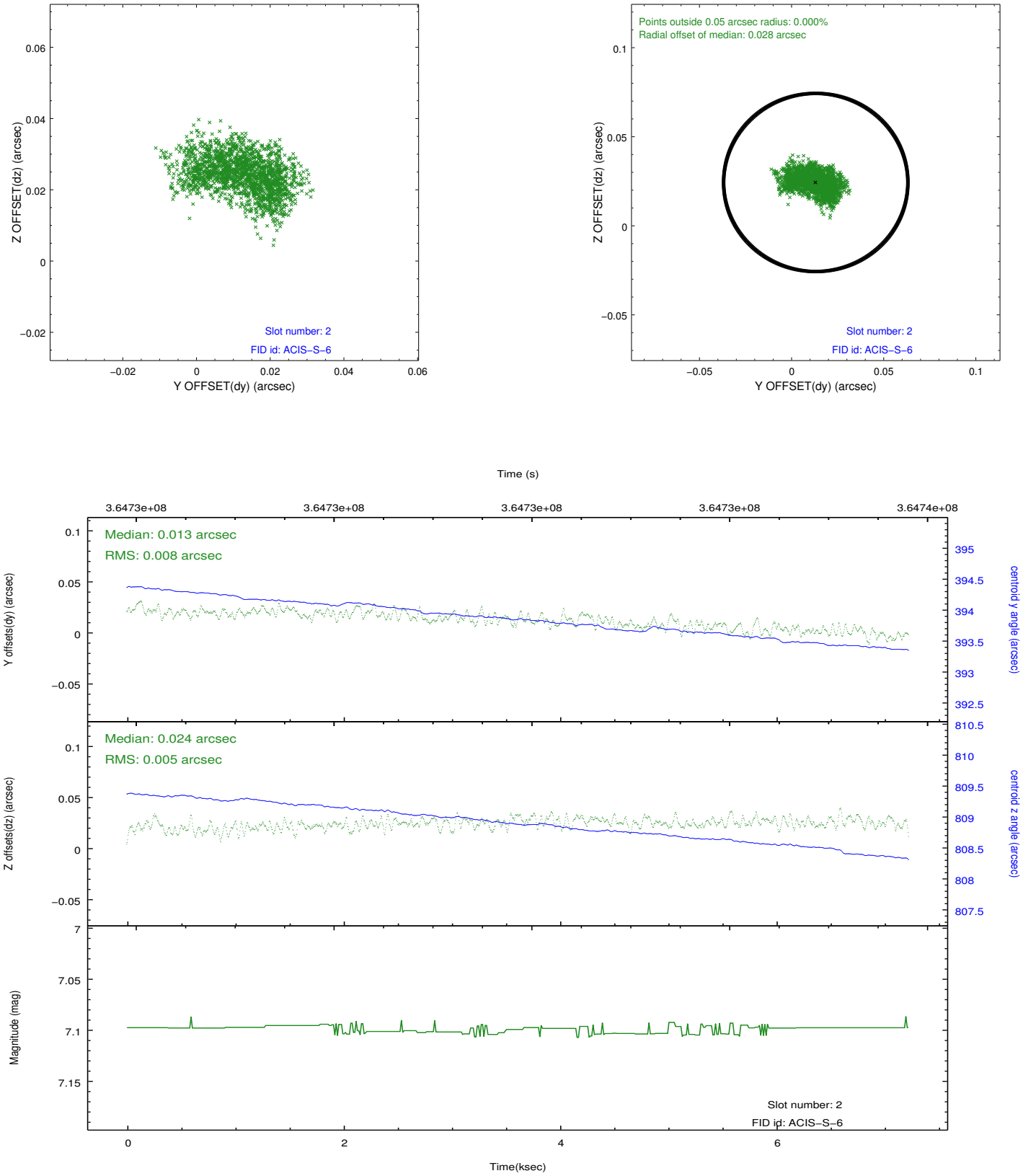
2.5.1 Slot 0



2.5.2 Slot 1



2.5.3 Slot 2



A Summary

A.1 Status

V&V Scientist	Jen Lauer
V&V Date (YYYY-MM-DD)	2012.06.13
V&V Edition	1
V&V Disposition and Status	OK
V&V Charge Time	7.03578216

A.2 Comments