

# V&V Reference Report

## L2 ASCDS Version : 8.4.5

Observation 10451 - L2 Version 2  
Chandra X-Ray Center

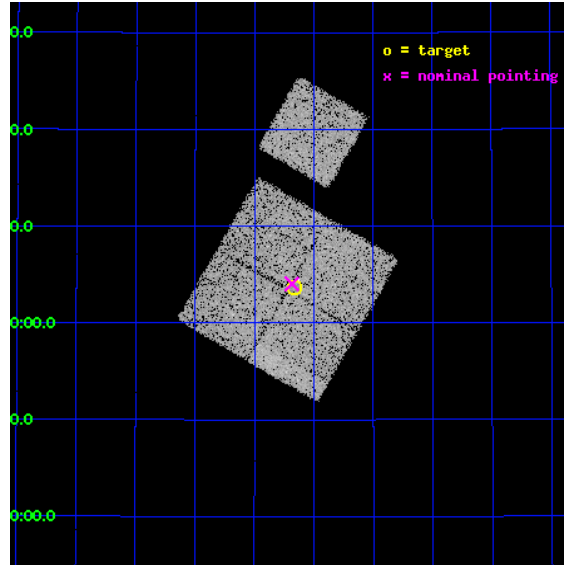
L2 Processing Date : Jun 17 2012

## Contents

<b>1</b>	<b>Front</b>	<b>2</b>
<b>2</b>	<b>OBI</b>	<b>3</b>
2.1	OBI . . . . .	3
2.1.1	Images . . . . .	3
2.1.2	Bias . . . . .	3
2.1.3	Parameters . . . . .	4
2.1.4	Events . . . . .	4
2.2	Compared Parameters . . . . .	5
2.3	Aspect . . . . .	6
2.4	Star Slots . . . . .	9
2.4.1	Slot 3 . . . . .	9
2.4.2	Slot 4 . . . . .	10
2.4.3	Slot 5 . . . . .	11
2.4.4	Slot 6 . . . . .	12
2.4.5	Slot 7 . . . . .	13
2.5	FID Slots . . . . .	14
2.5.1	Slot 0 . . . . .	14
2.5.2	Slot 1 . . . . .	15
2.5.3	Slot 2 . . . . .	16
<b>A</b>	<b>Summary</b>	<b>17</b>
A.1	Status . . . . .	17
A.2	Comments . . . . .	17

# 1 Front

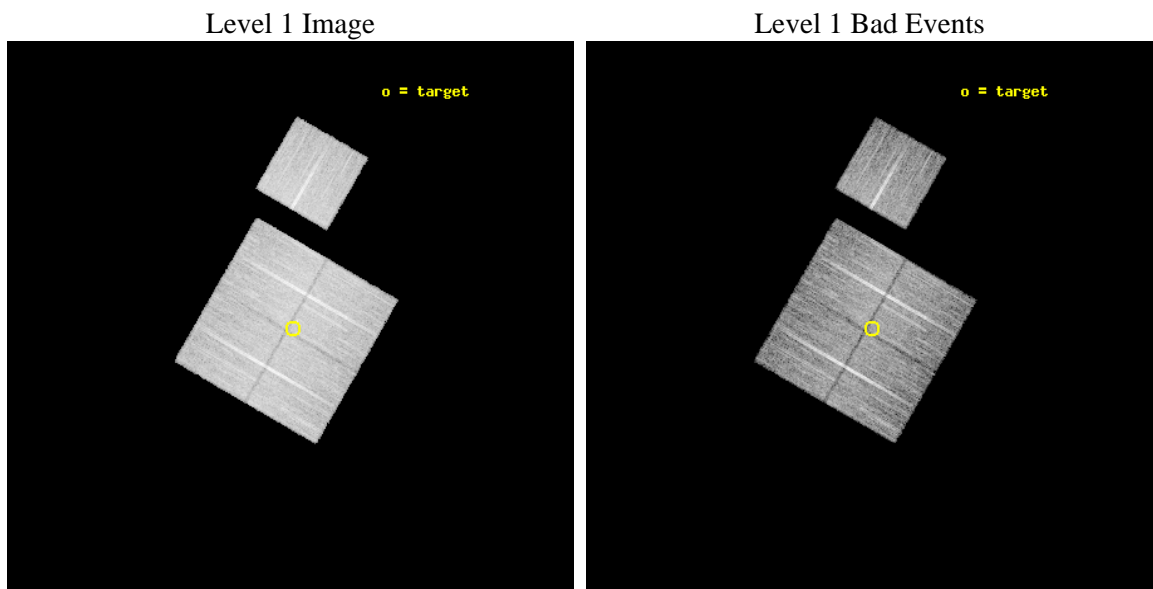
seq_num	800812	Sequence number
obs_id	10451	Observation id
title	The Role of AGN in Massive Galaxy Formation	Proposal title
observer	Dr. Spencer Stanford	Principal investigator
object	ISCS1034	Source name
dtcycle	0	&#160
cycle	P	events from which exps? Prim/Second/Both
ra_targ	216.539583	Observer's specified target RA [deg]
dec_targ	34.061417	Observer's specified target Dec [deg]
ra_nom	216.54621409134	Nominal RA [deg]
dec_nom	34.067352830718	Nominal Dec [deg]
roll_nom	30.056899995467	Nominal Roll [deg]
revision	2	Processing version of data
ontime	12265.960049748	Sum of GTIs [s]
livetime	12105.69625163	Livetime [s]
ontime0	12262.695939481	Sum of GTIs [s]
ontime1	12265.877969742	Sum of GTIs [s]
ontime2	12262.778019488	Sum of GTIs [s]
ontime3	12265.960049748	Sum of GTIs [s]
ontime6	12265.795889735	Sum of GTIs [s]
l2events	48276	Number of level 2 events



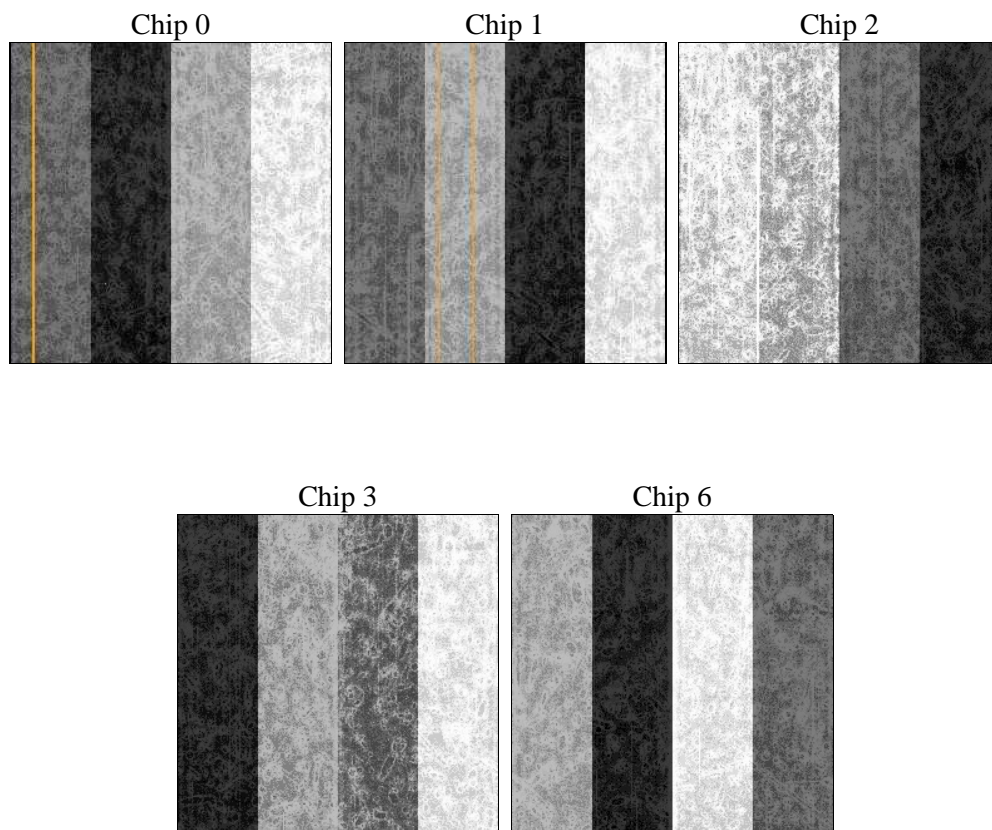
## 2 OBI

### 2.1 OBI

#### 2.1.1 Images



#### 2.1.2 Bias



### 2.1.3 Parameters

obi_num	1	Obi number	sched_exp_time	12222.057000	[s] Scheduled observation exposure time
ascdsver	8.4.5	Processing system revision	ontime	12265.960049748	Sum of GTIs [s]
caldsver	4.4.10	&#160	ontime0	12262.695939481	Sum of GTIs [s]
date	2012-06-17T06:04:11	Date and time of file creation	ontime1	12265.877969742	Sum of GTIs [s]
revision	2	Processing version of data	ontime2	12262.778019488	Sum of GTIs [s]
			ontime3	12265.960049748	Sum of GTIs [s]
			ontime6	12265.795889735	Sum of GTIs [s]
			l1events	530537	Number of level 1 events

### 2.1.4 Events

	ccd 0	ccd 1	ccd 2	ccd 3	ccd 6
level 1 events	100217	102989	112972	106337	108022
rejected events	88829	90082	101714	95331	96584
rejected %	88%	87%	90%	89%	89%

	ccd 0	ccd 1	ccd 2	ccd 3	ccd 6
grade 0 events	4026	4832	4089	4065	4165
	4%	4%	3%	3%	3%
grade 1 events	61	72	52	95	62
	0%	0%	0%	0%	0%
grade 2 events	2749	2976	2860	2419	2486
	2%	2%	2%	2%	2%
grade 3 events	1214	1273	1140	1135	1225
	1%	1%	1%	1%	1%
grade 4 events	1142	1315	1175	1245	1183
	1%	1%	1%	1%	1%
grade 5 events	4025	4164	3808	4455	4551
	4%	4%	3%	4%	4%
grade 6 events	2263	2514	2003	2151	2384
	2%	2%	1%	2%	2%
grade 7 events	84737	85843	97845	90772	91966
	84%	83%	86%	85%	85%

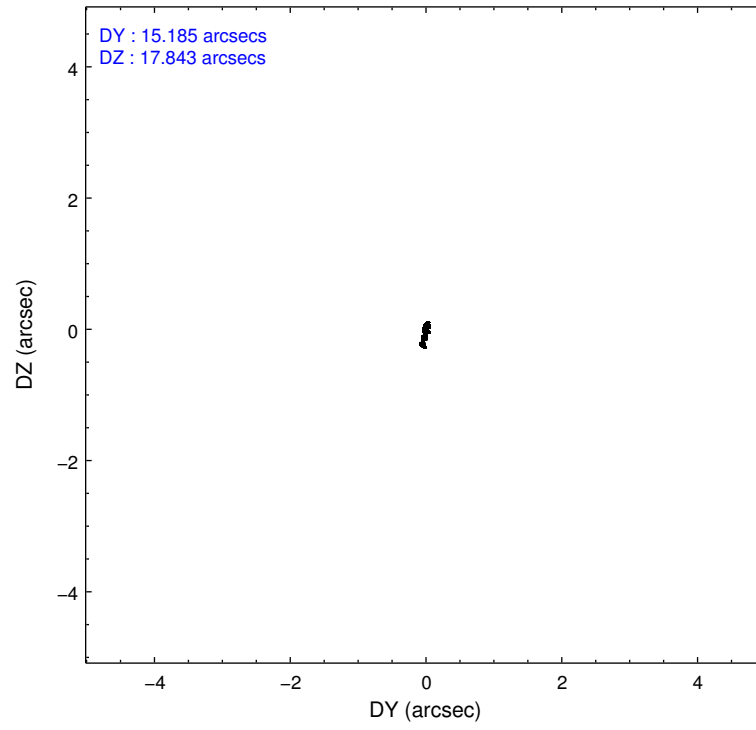
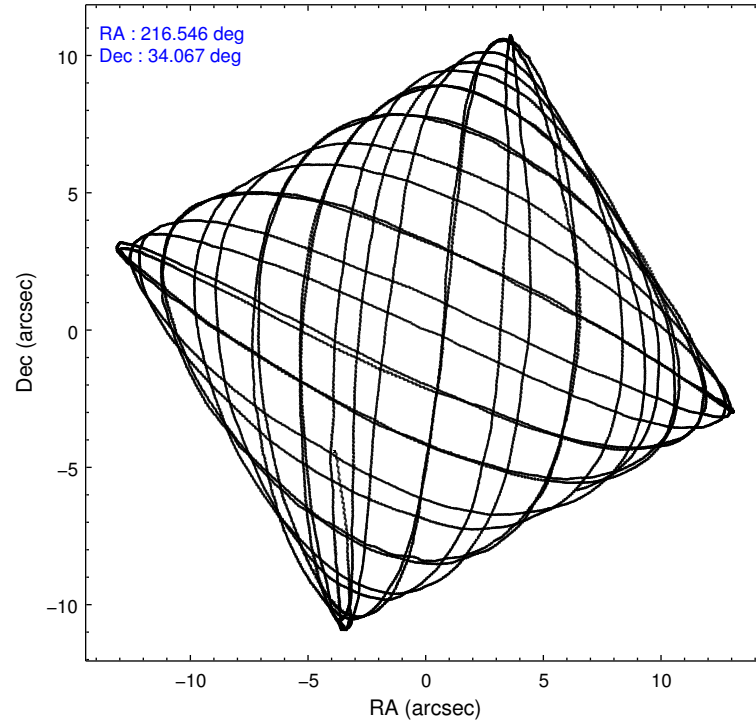


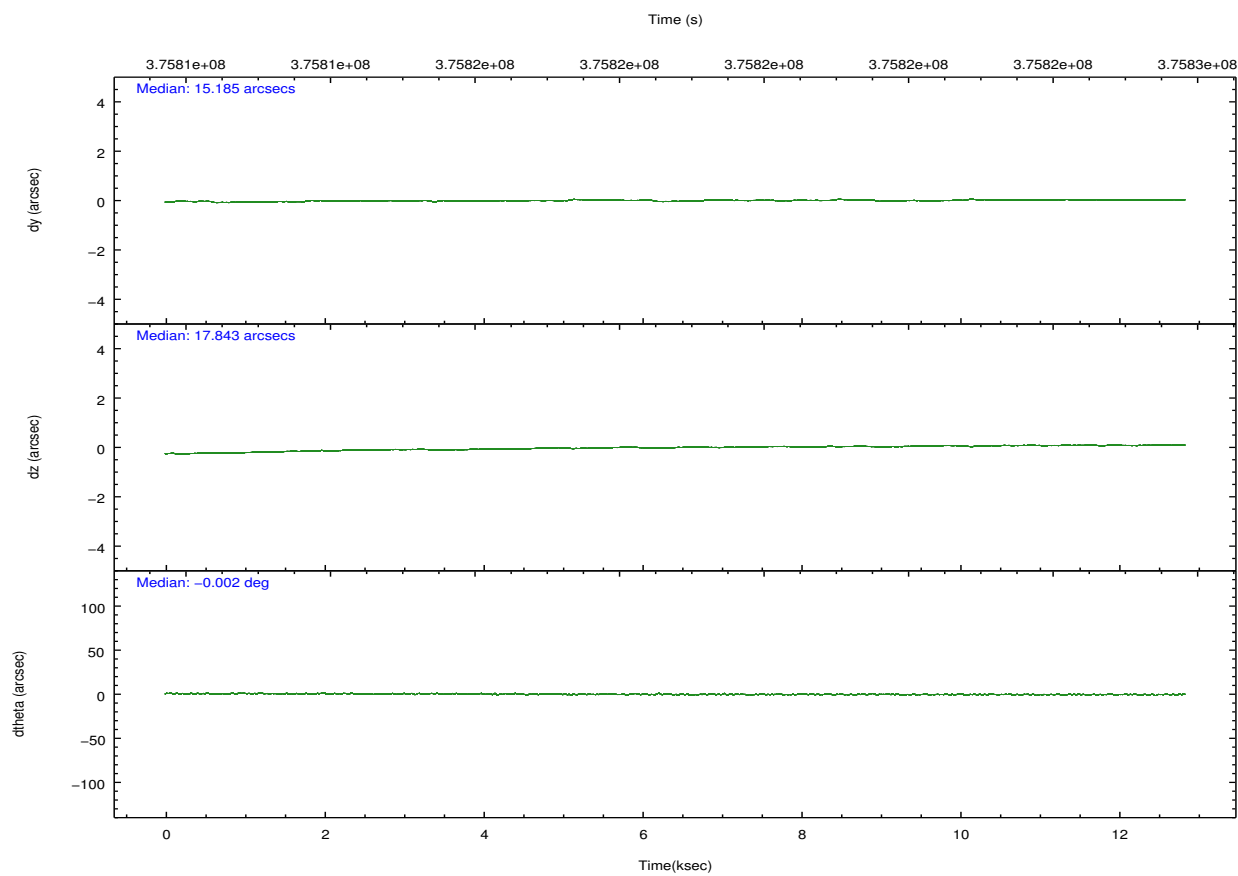
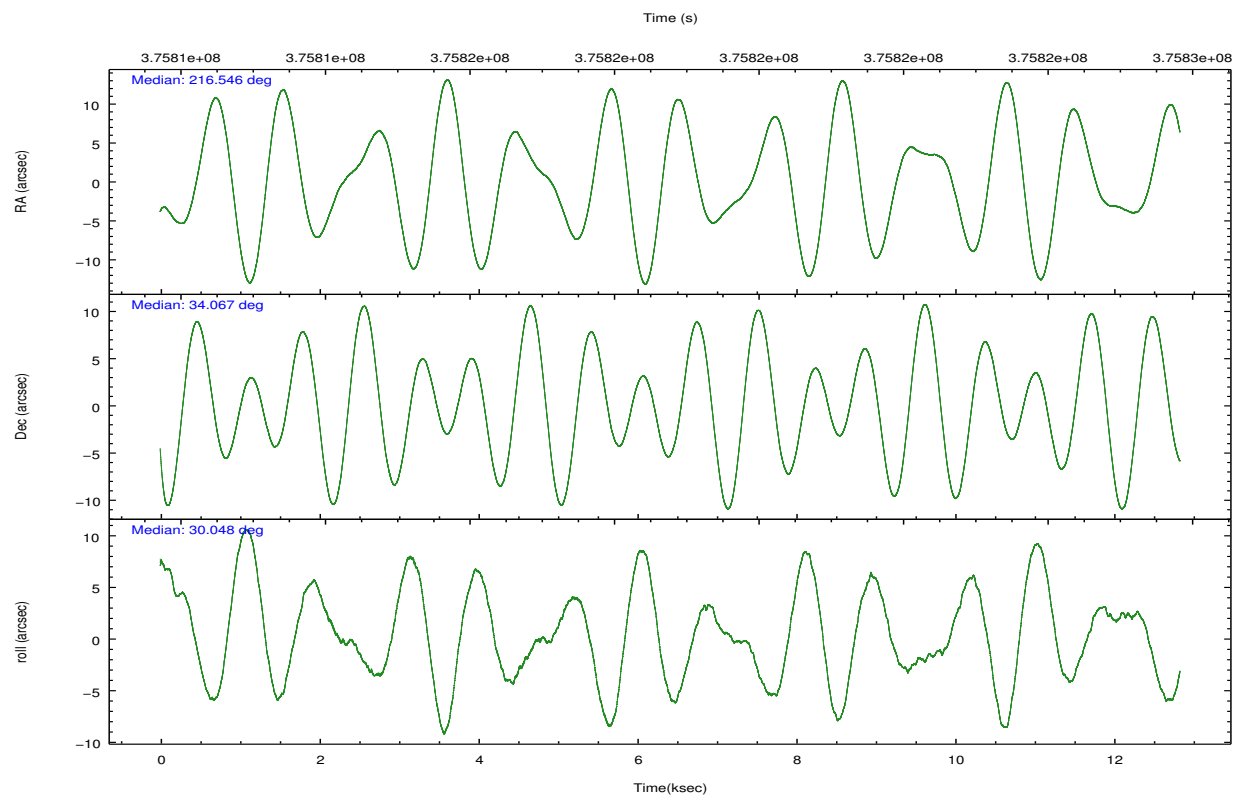
## 2.2 Compared Parameters

Parameter	Planned	Actual
Instrument	ACIS	ACIS
Detector	ACIS-01236	ACIS-01236
Grating	NONE	NONE
Data mode	VFAINT	VFAINT
Observation mode	POINTING	POINTING
[deg] Pointing RA	216.529743	216.5462140913353
[deg] Pointing Dec	34.043477	34.06735283071784
[deg] Pointing Roll	29.857440	30.05689999546673
[mm] SIM focus pos	-0.782348	-0.7809083437167272
[mm] SIM defocus	0	0.001439871863259334
[mm] SIM translation stage pos	-233.592463	-233.5874344608287
[mm] SIM translation stage offset	0	-0.005018542100998502
[s] Observation start time (MET)	375812949.184000	375811805.9538
Observation start date	2009-11-28T16:28:03	2009-11-28T16:10:05
[s] Observation end time (MET)	375825171.184000	375825409.24198
Observation end date	2009-11-28T19:51:45	2009-11-28T19:56:49
Read mode	TIMED	TIMED

Parameter	Planned	Actual
Obspar format version number	7	7
Obspar file type	PREDICTED	ACTUAL
Obspar update status	NONE	UPDATED
CCD I0 on	Y	Y
CCD I1 on	Y	Y
CCD I2 on	Y	Y
CCD I3 on	Y	Y
CCD S0 on	N	N
CCD S1 on	N	N
CCD S2 on	O1	Y
CCD S3 on	N	N
CCD S4 on	N	N
CCD S5 on	N	N
Number of optional ACIS chips dropped	0	0
On-chip summing requested	N	N
Subarray requested	NONE	NONE
Alternating exposures requested	N	N
[s] Primary exposure time	0.000000	3.1

## 2.3 Aspect



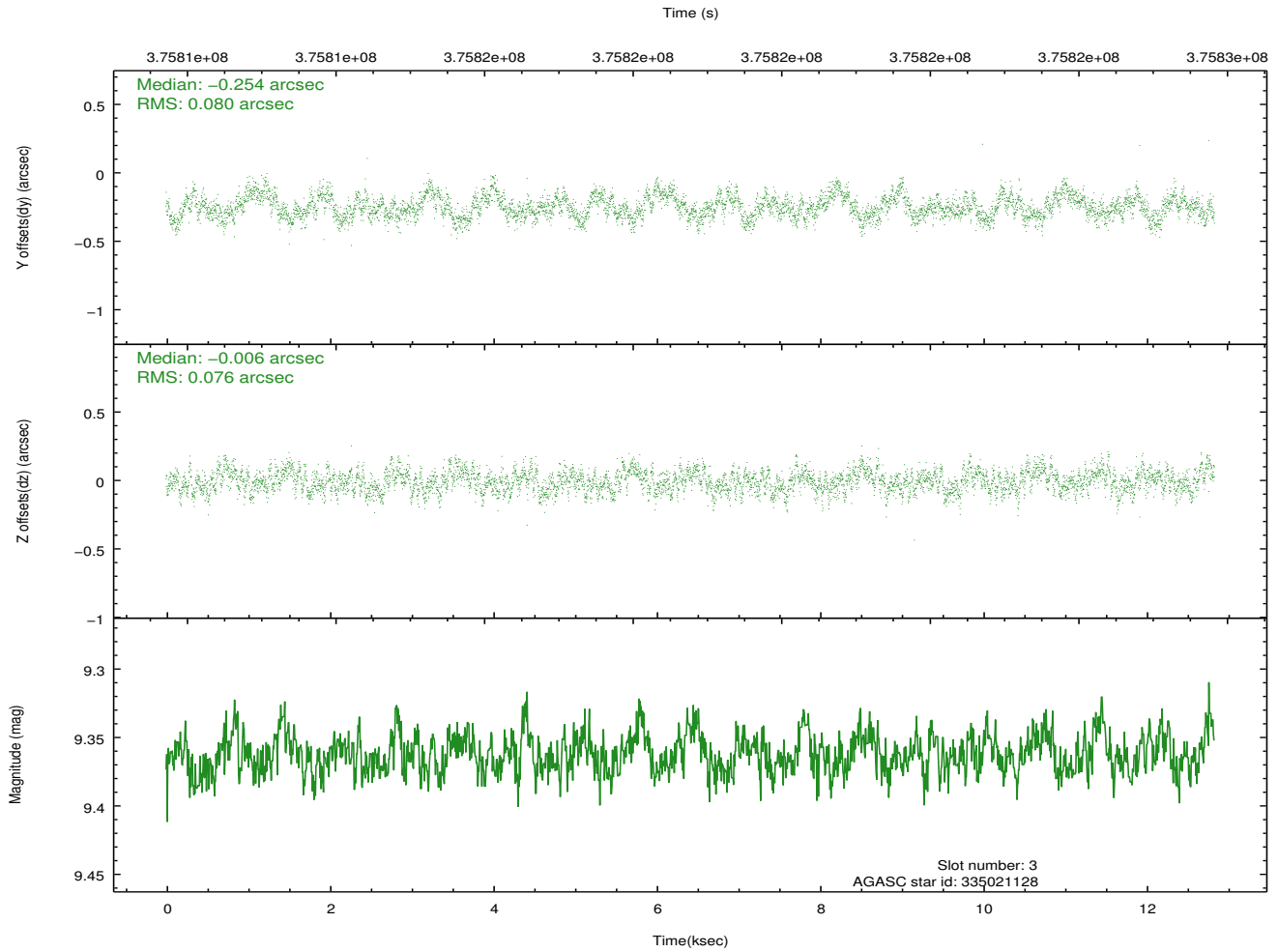
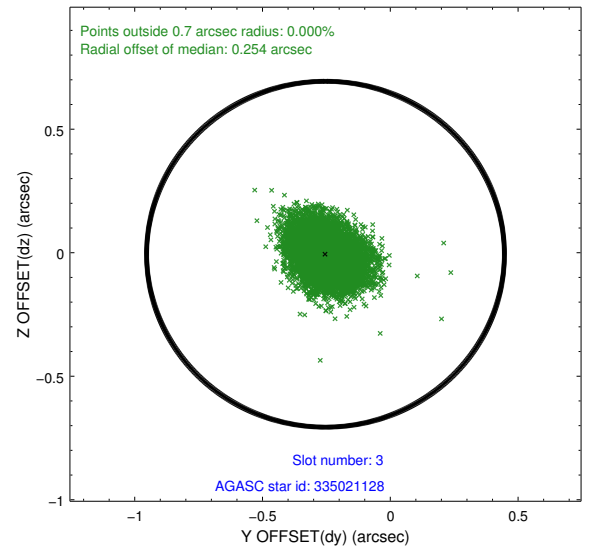
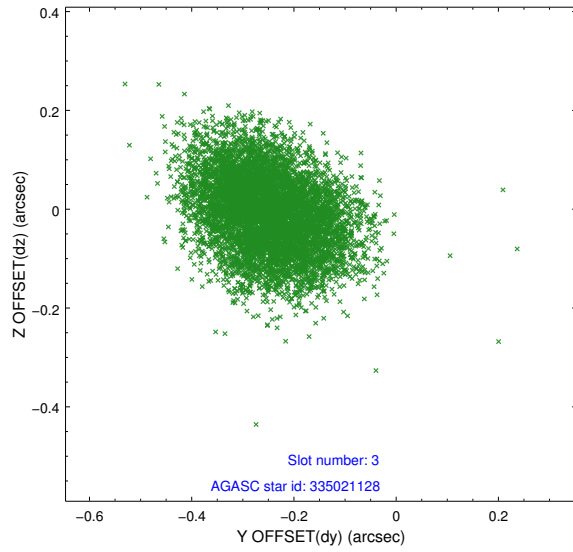


### Slot Statistics

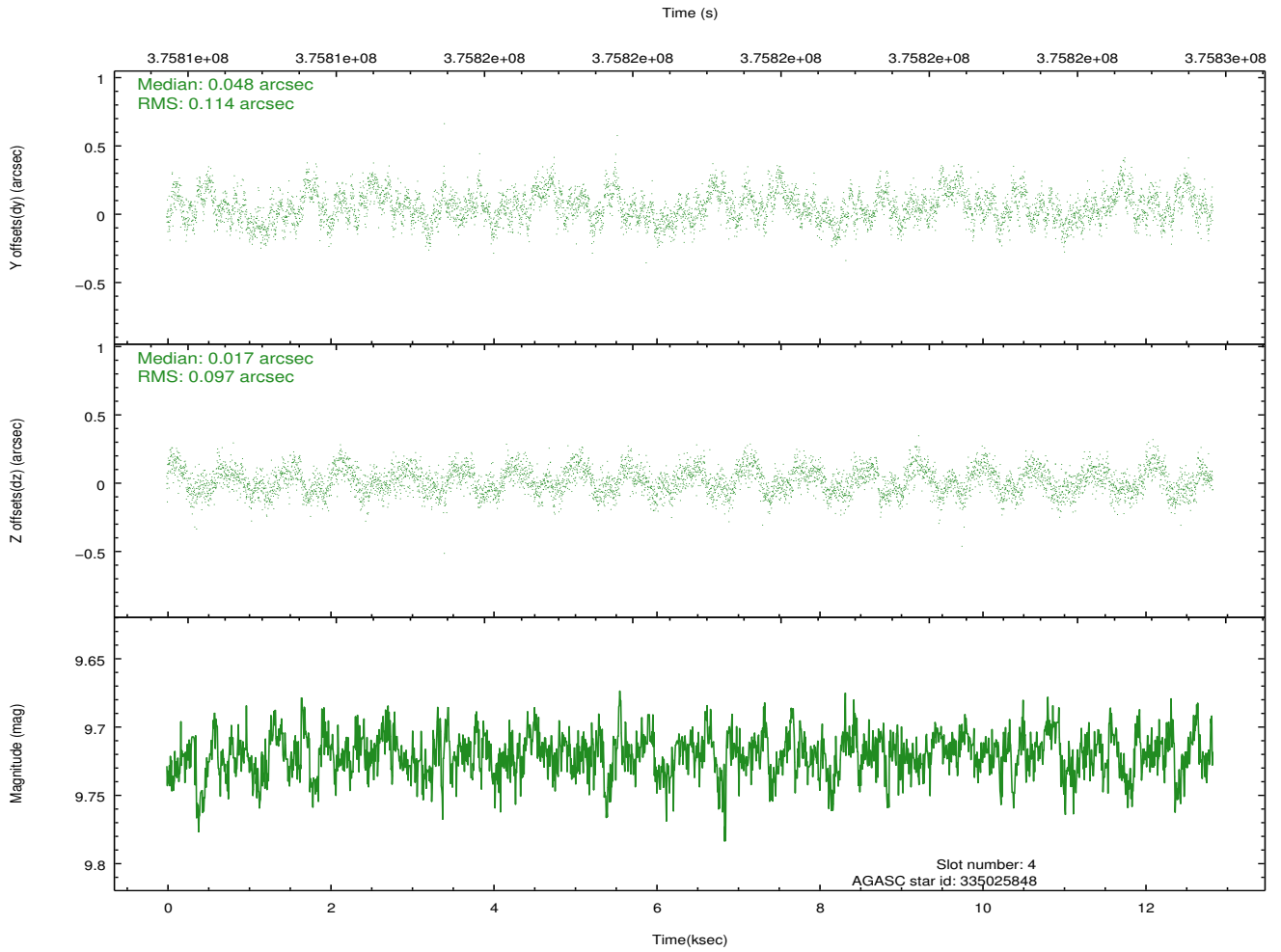
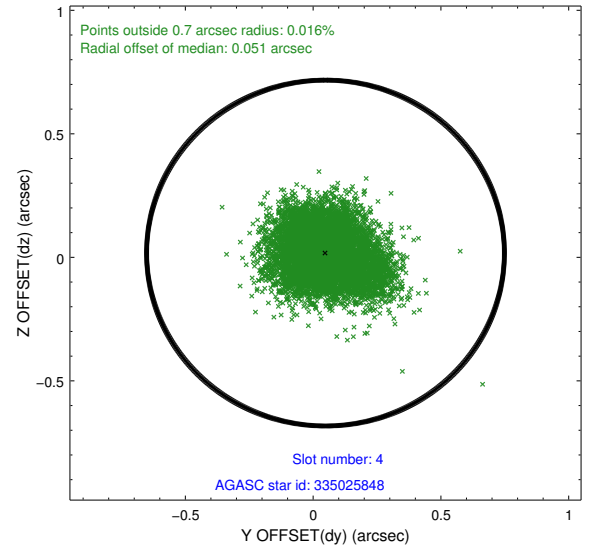
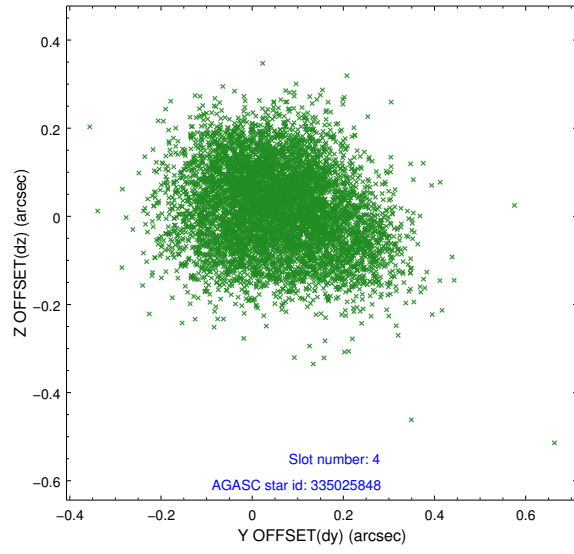
slot	status	id	mag	n_pts	med_dy	med_dz	dr1	dr2	ra	dec	mean_y	mean_z
0	FID	ACIS-I-1	7.00	3131	0.058	-0.003	0.007	0.012	0.000000	0.000000	924.32	-841.50
1	FID	ACIS-I-5	7.00	3131	-0.222	0.064	0.006	0.010	0.000000	0.000000	-1823.85	1055.88
2	FID	ACIS-I-6	7.01	3131	0.073	0.009	0.007	0.012	0.000000	0.000000	389.48	1700.75
3	GUIDE	335021128	9.36	6260	-0.254	-0.006	0.118	0.185	216.159551	34.422539	-273.52	1732.57
4	GUIDE	335025848	9.72	6254	0.048	0.017	0.161	0.254	217.530531	33.778292	2129.65	-2305.49
5	GUIDE	335028240	9.14	6234	0.449	0.133	0.132	0.209	216.746851	33.385009	-612.93	-2379.80
6	GUIDE	335028696	9.17	6256	-0.481	0.216	0.097	0.154	217.260519	33.844112	1541.33	-1703.34
7	GUIDE	335030384	8.82	6258	0.235	-0.353	0.077	0.120	216.806407	34.722197	1927.28	1712.31

## 2.4 Star Slots

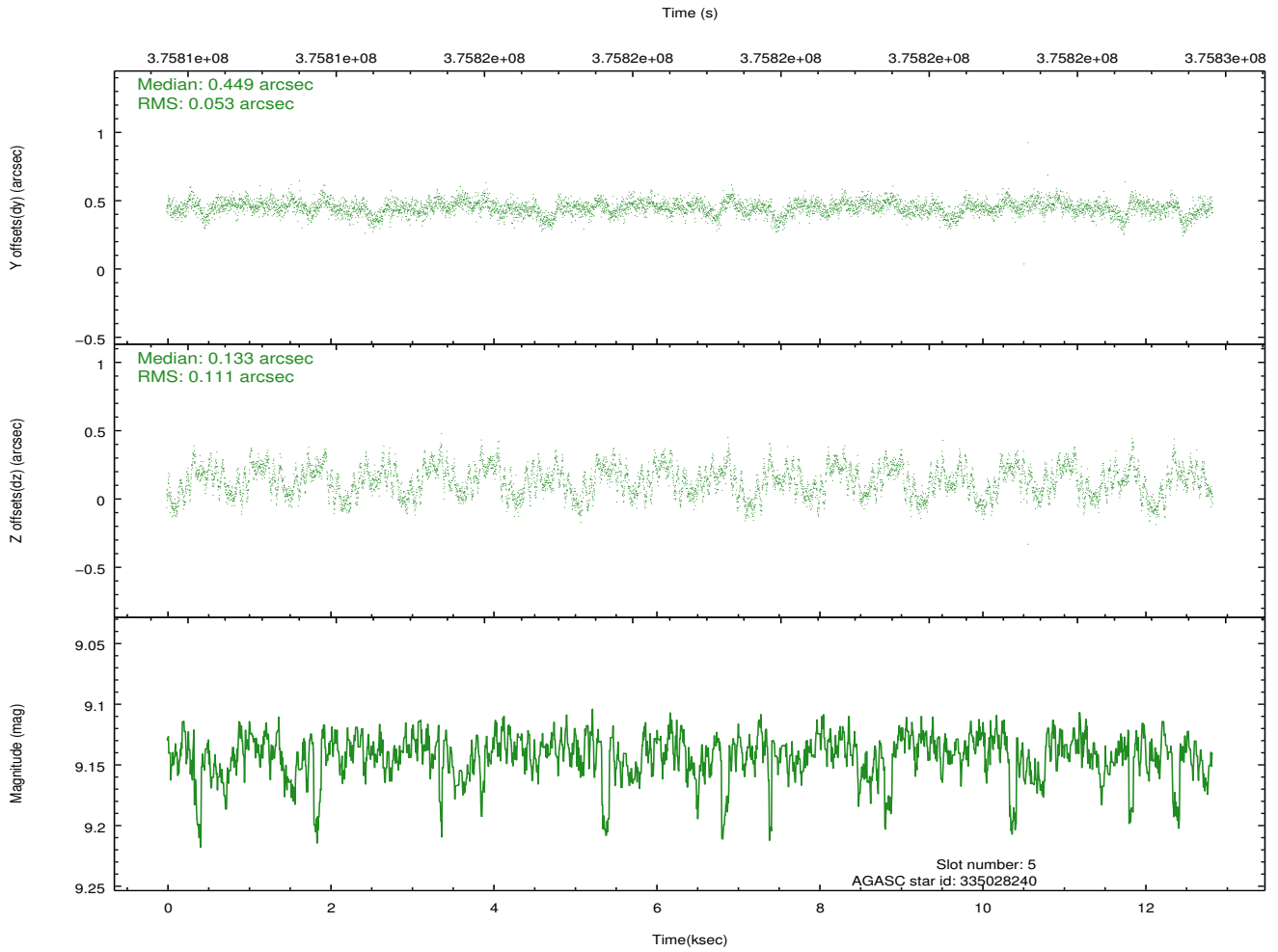
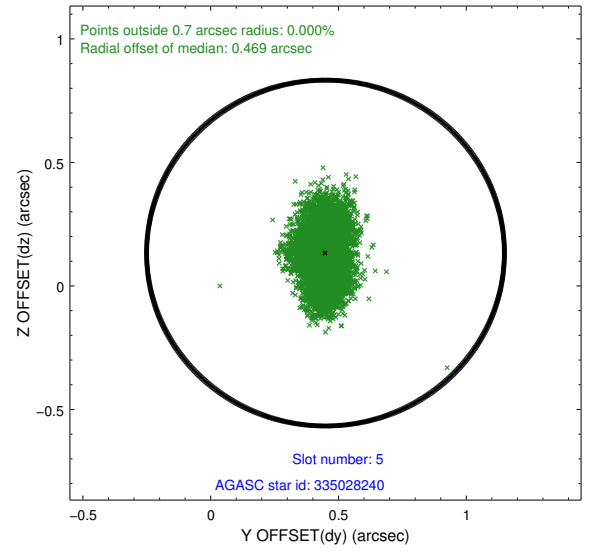
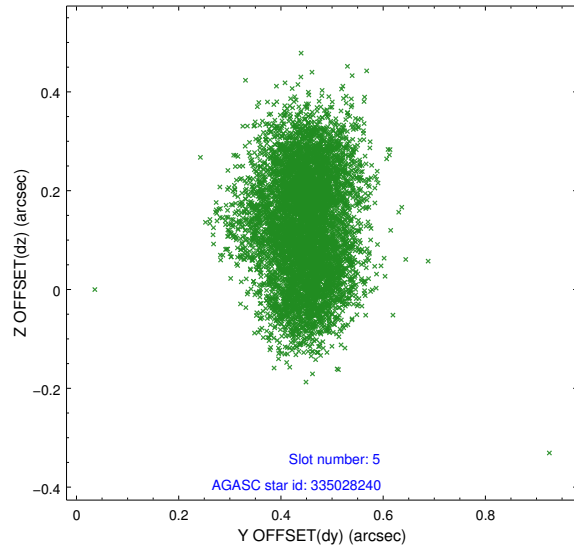
### 2.4.1 Slot 3



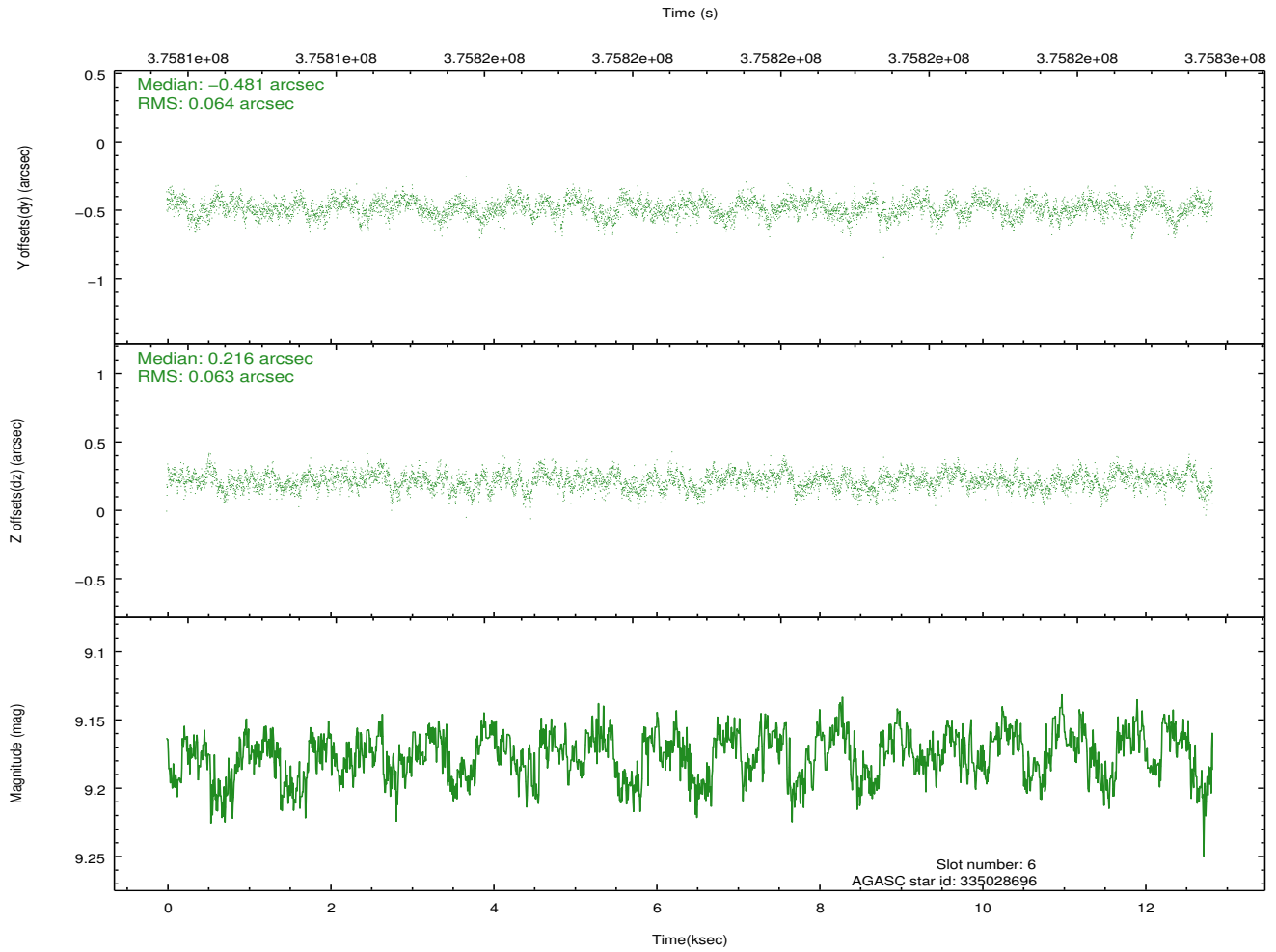
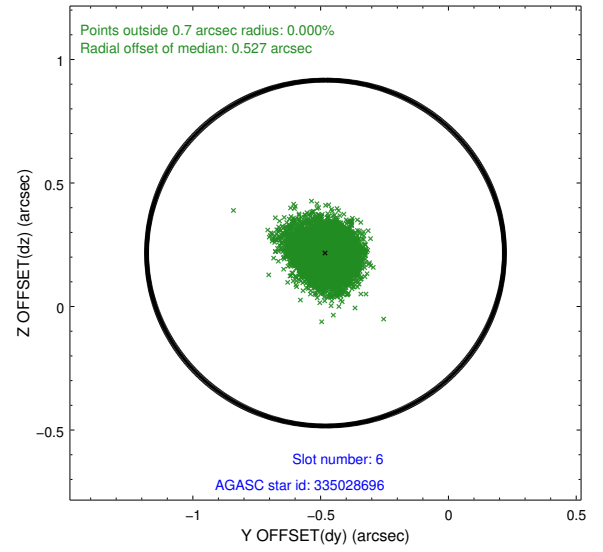
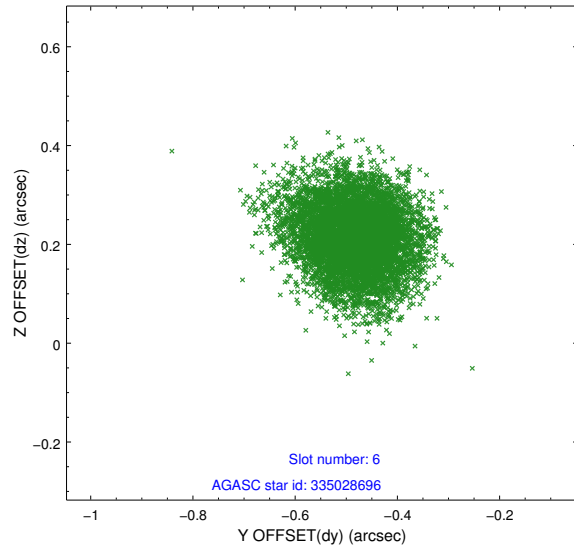
## 2.4.2 Slot 4



### 2.4.3 Slot 5

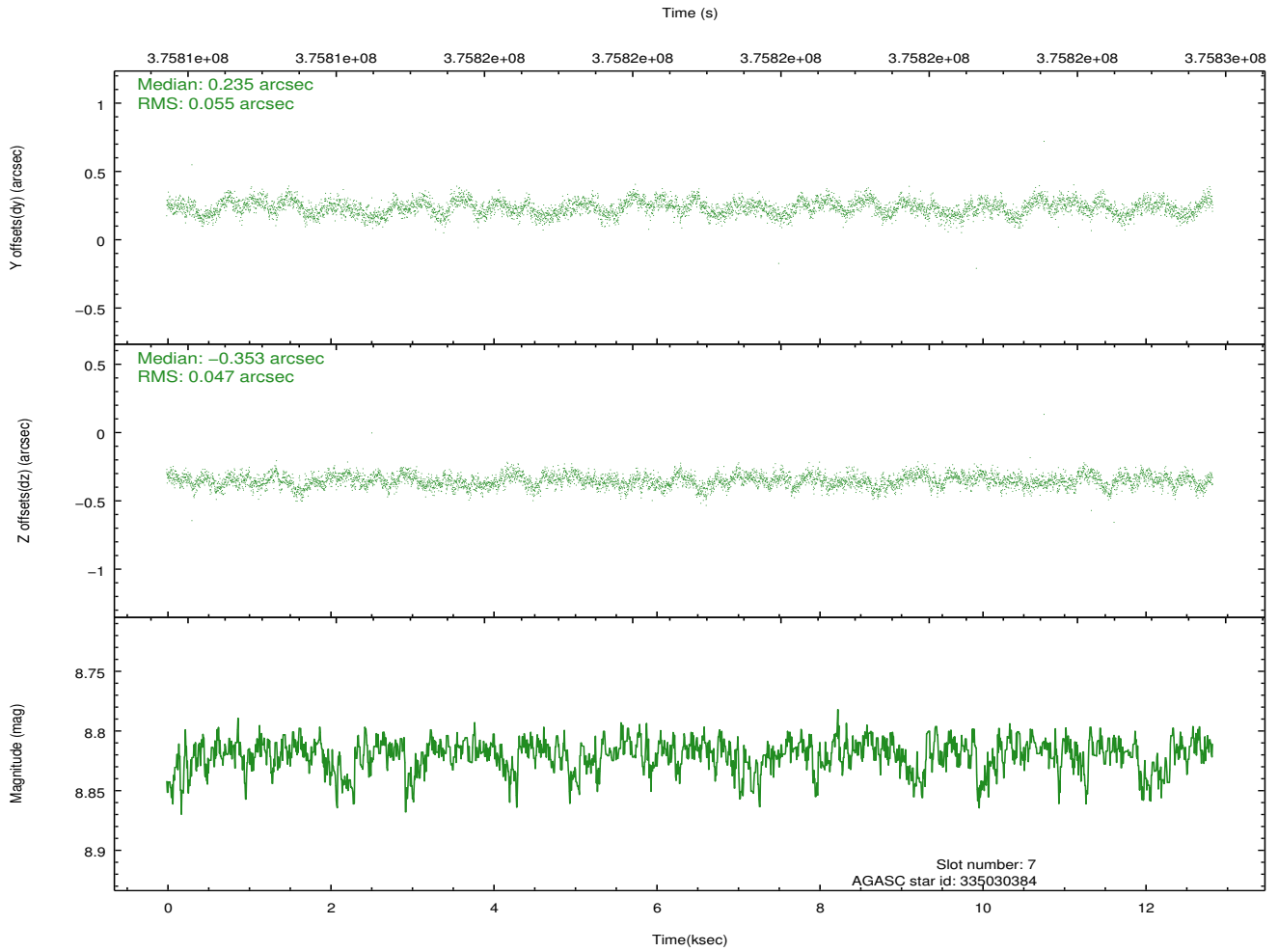
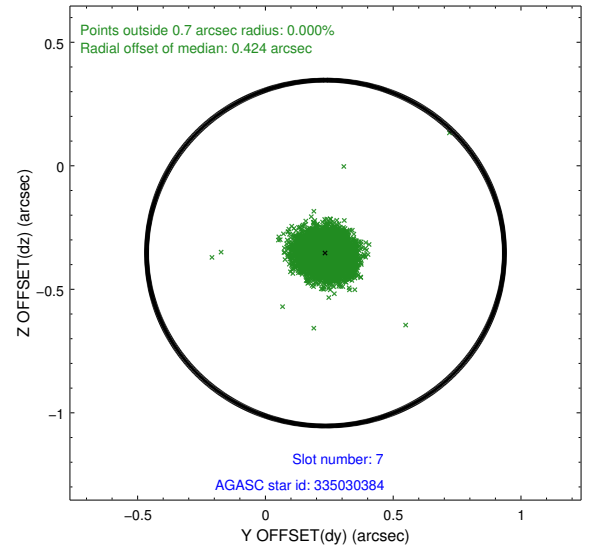
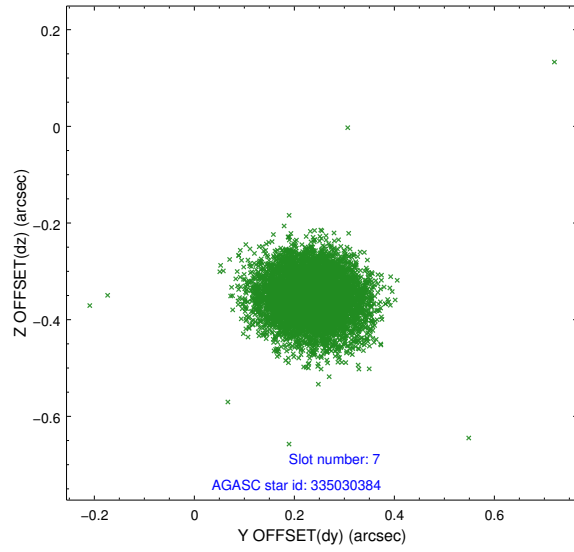


## 2.4.4 Slot 6



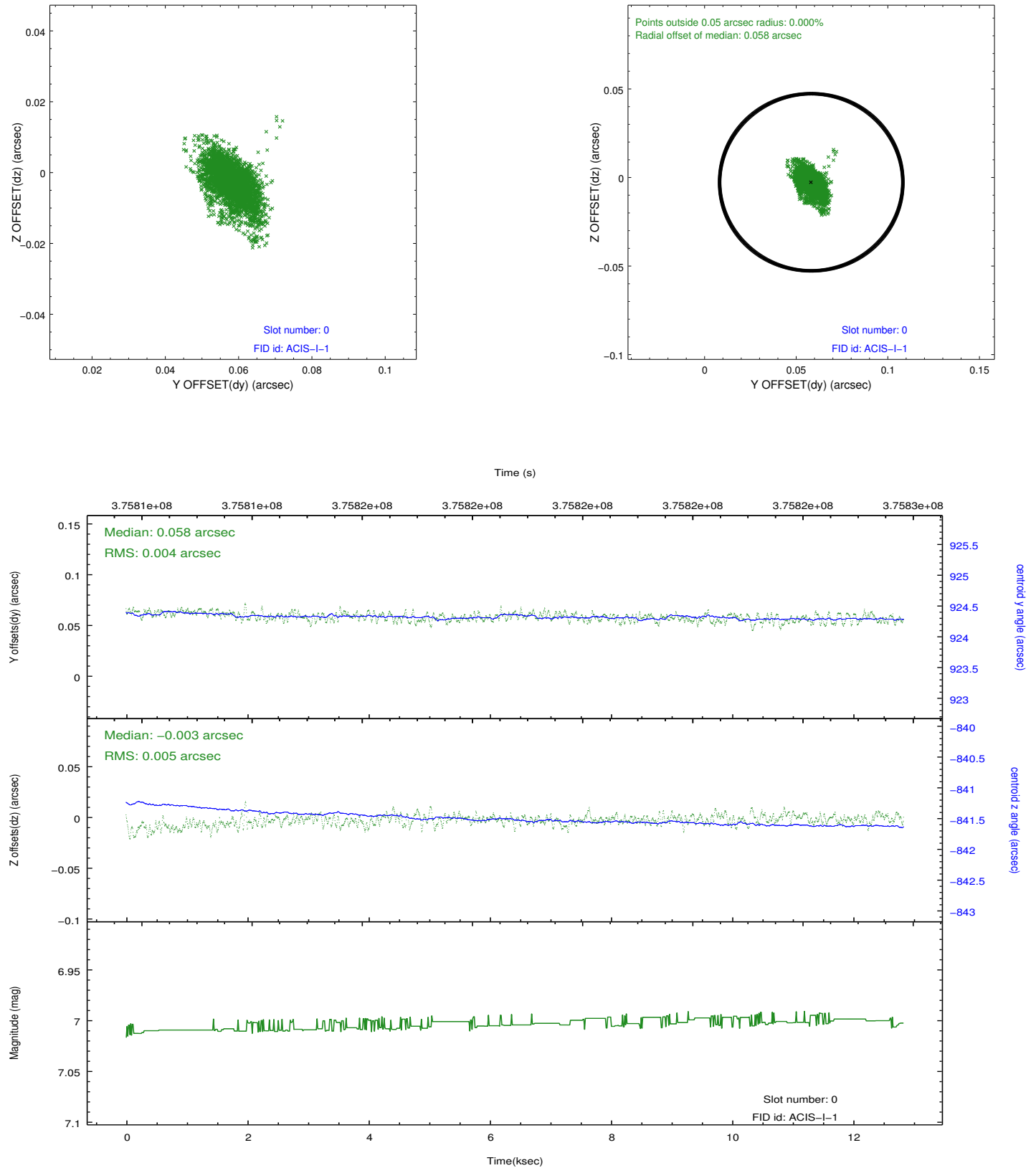


## 2.4.5 Slot 7

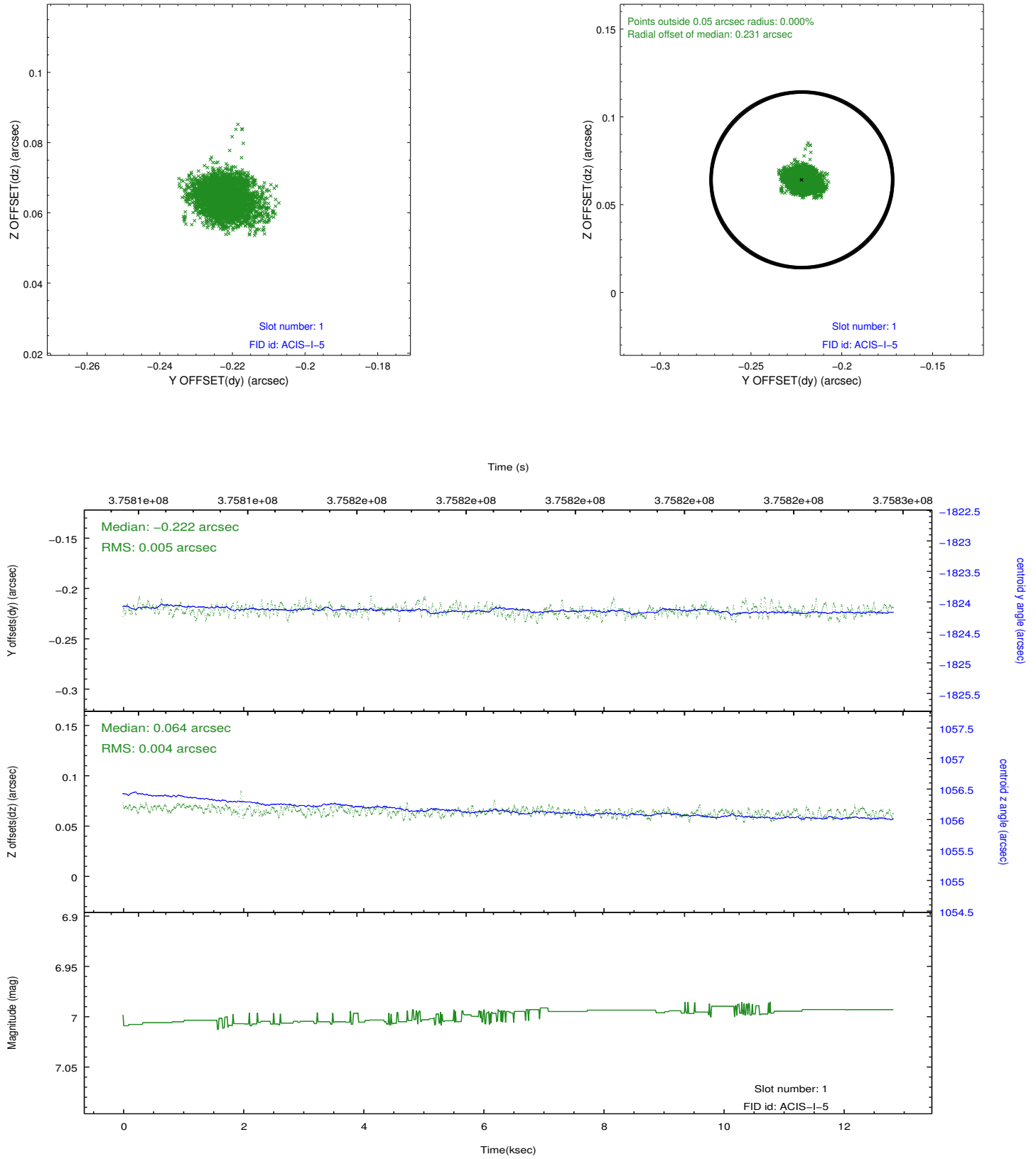


## 2.5 FID Slots

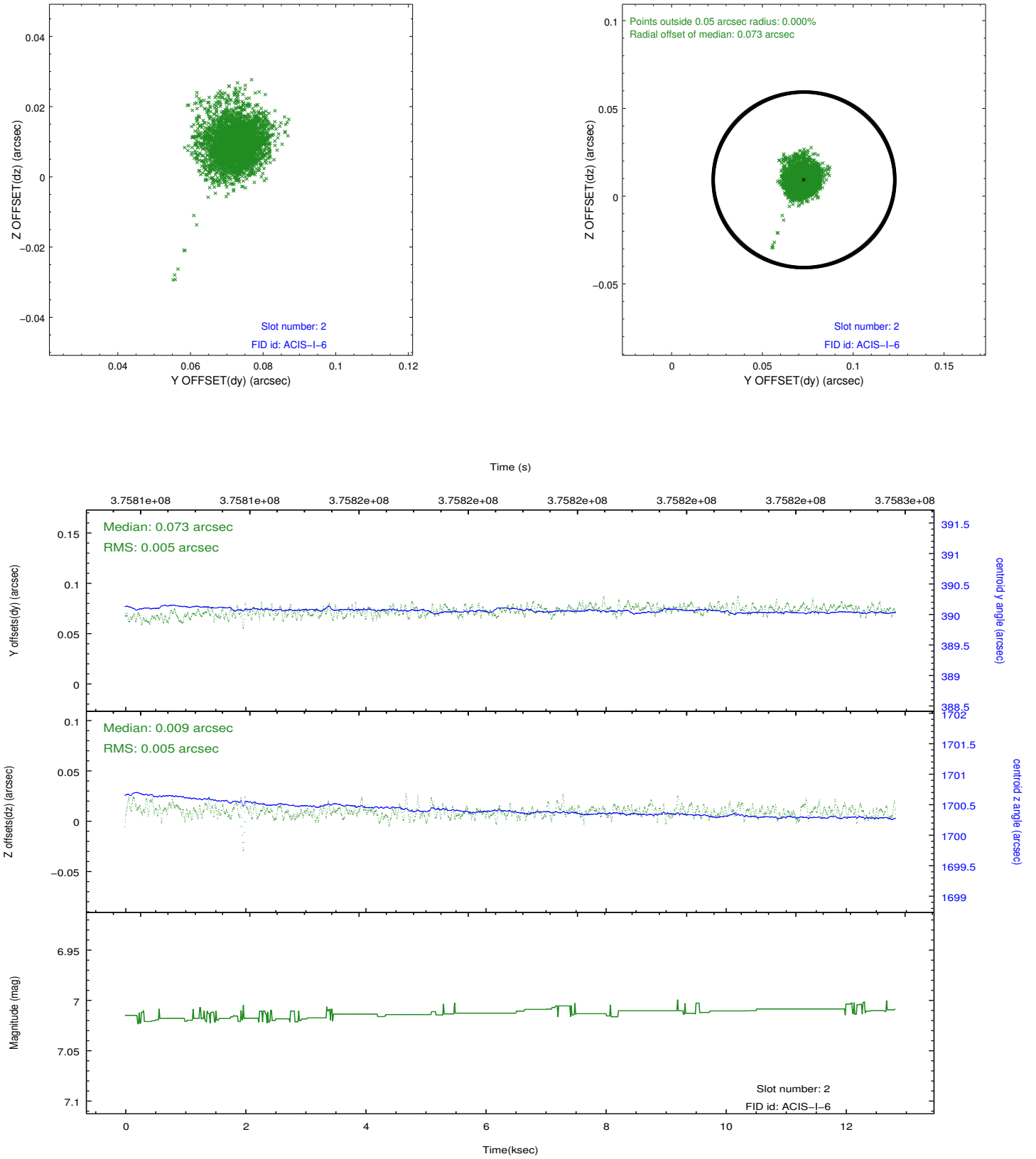
### 2.5.1 Slot 0



## 2.5.2 Slot 1



### 2.5.3 Slot 2



## A Summary

### A.1 Status

V&V Scientist	Jen Lauer
V&V Date (YYYY-MM-DD)	2012.06.20
V&V Edition	1
V&V Disposition and Status	OK
V&V Charge Time	12.265960052073

### A.2 Comments