

V&V Reference Report

L2 ASCDS Version : 8.4.4

Observation 10321 - L2 Version 2
Chandra X-Ray Center

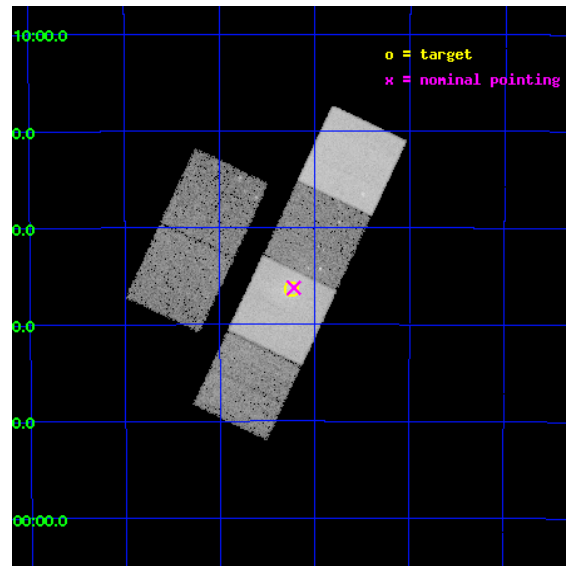
L2 Processing Date : May 30 2012

Contents

1	Front	2
2	OBI	3
2.1	OBI	3
2.1.1	Images	3
2.1.2	Bias	3
2.1.3	Parameters	4
2.1.4	Events	4
2.2	Compared Parameters	5
2.3	Aspect	6
2.4	Star Slots	9
2.4.1	Slot 3	9
2.4.2	Slot 4	10
2.4.3	Slot 5	11
2.4.4	Slot 6	12
2.4.5	Slot 7	13
2.5	FID Slots	14
2.5.1	Slot 0	14
2.5.2	Slot 1	15
2.5.3	Slot 2	16
A	Summary	17
A.1	Status	17
A.2	Comments	17

1 Front

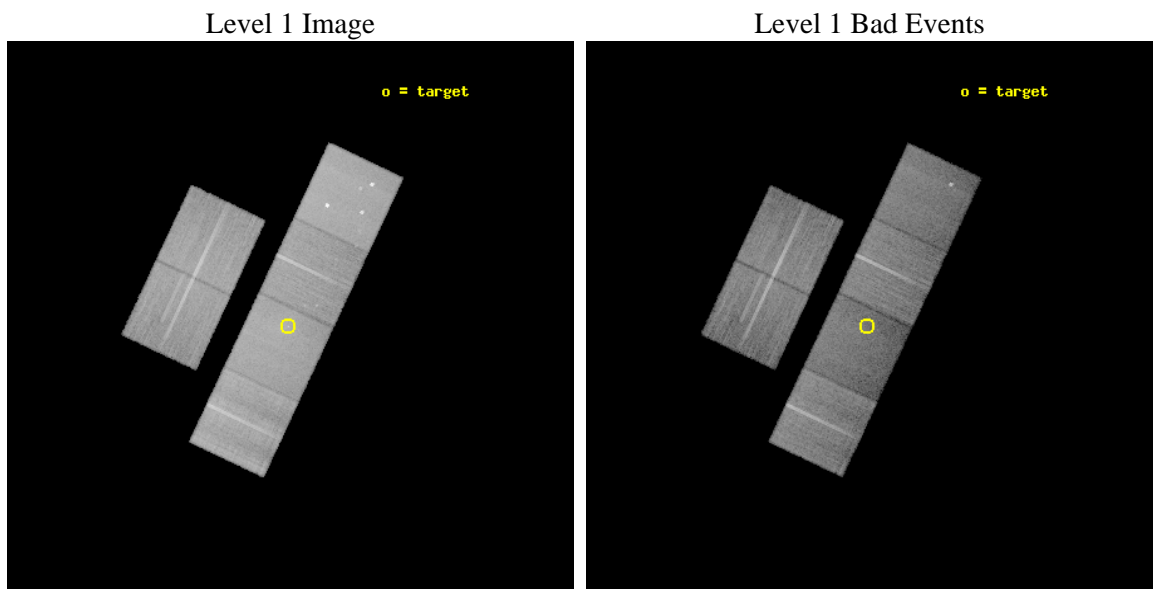
seq_num	701864	Sequence number
obs_id	10321	Observation id
title	The nature of active nuclei in radio galaxies: observations of the 2Jy sample	Proposal title
observer	Dr Martin Hardcastle	Principal investigator
object	PKS 1839-48	Source name
dtcycle	0	
cycle	P	events from which exps? Prim/Second/Both
ra_targ	280.810833	Observer's specified target RA [deg]
dec_targ	-48.606472	Observer's specified target Dec [deg]
ra_nom	280.8047218884	Nominal RA [deg]
dec_nom	-48.60384683022	Nominal Dec [deg]
roll_nom	115.25281316988	Nominal Roll [deg]
revision	2	Processing version of data
ontime	20040.834816873	Sum of GTIs [s]
livetime	19787.06569928	Livetime [s]
ontime2	20037.634886622	Sum of GTIs [s]
ontime3	20040.711696863	Sum of GTIs [s]
ontime5	20040.79377687	Sum of GTIs [s]
ontime6	20040.752736866	Sum of GTIs [s]
ontime7	20040.834816873	Sum of GTIs [s]
ontime8	20040.67065686	Sum of GTIs [s]
l2events	273557	Number of level 2 events



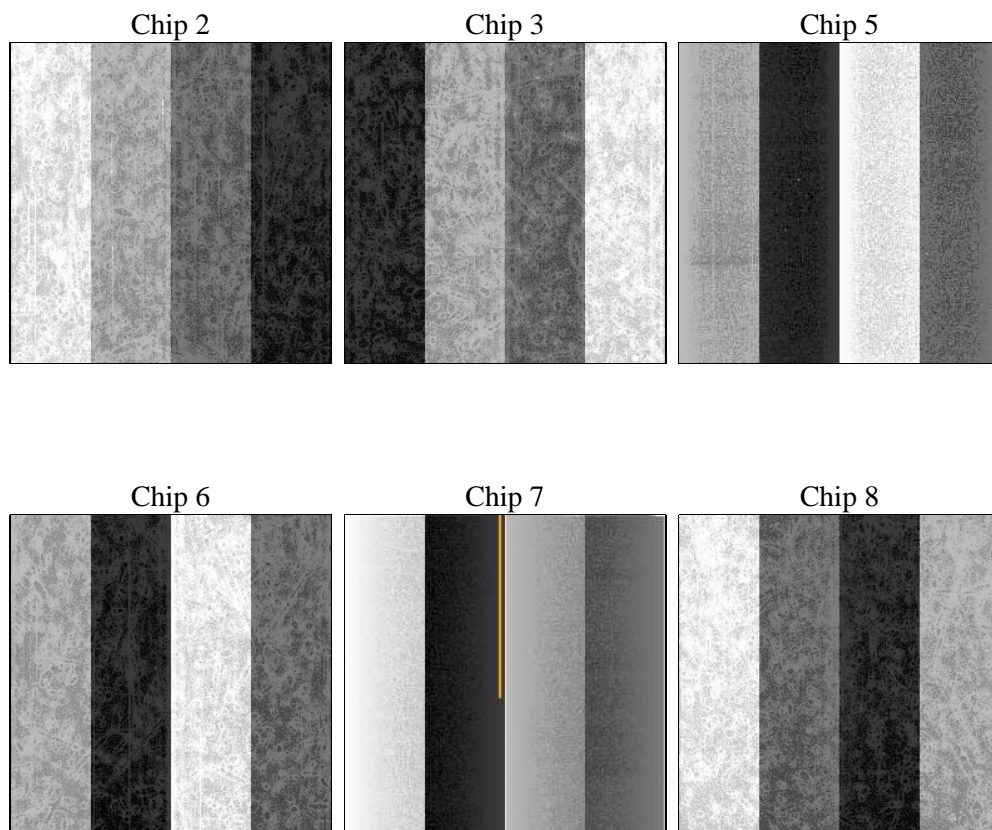
2 OBI

2.1 OBI

2.1.1 Images



2.1.2 Bias



2.1.3 Parameters

obi_num	0	Obi number	sched_exp_time	20000.000000	[s] Scheduled observation exposure time
ascdsver	8.4.4	Processing system revision	ontime	20040.834816873	Sum of GTIs [s]
caldsver	4.4.9	 	ontime2	20037.634886622	Sum of GTIs [s]
date	2012-05-31T00:12:50	Date and time of file creation	ontime3	20040.711696863	Sum of GTIs [s]
revision	2	Processing version of data	ontime5	20040.79377687	Sum of GTIs [s]
			ontime6	20040.752736866	Sum of GTIs [s]
			ontime7	20040.834816873	Sum of GTIs [s]
			ontime8	20040.67065686	Sum of GTIs [s]
			l1events	1169823	Number of level 1 events

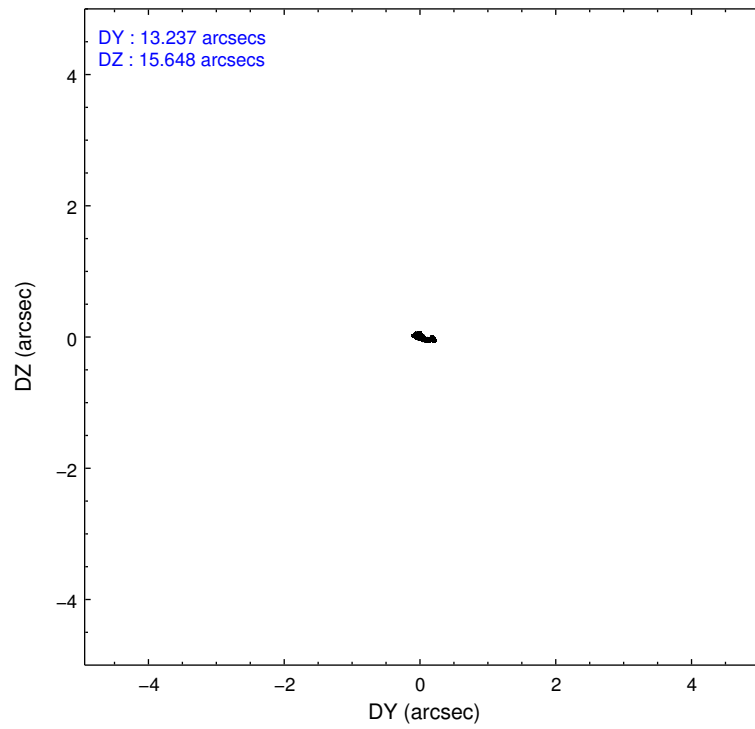
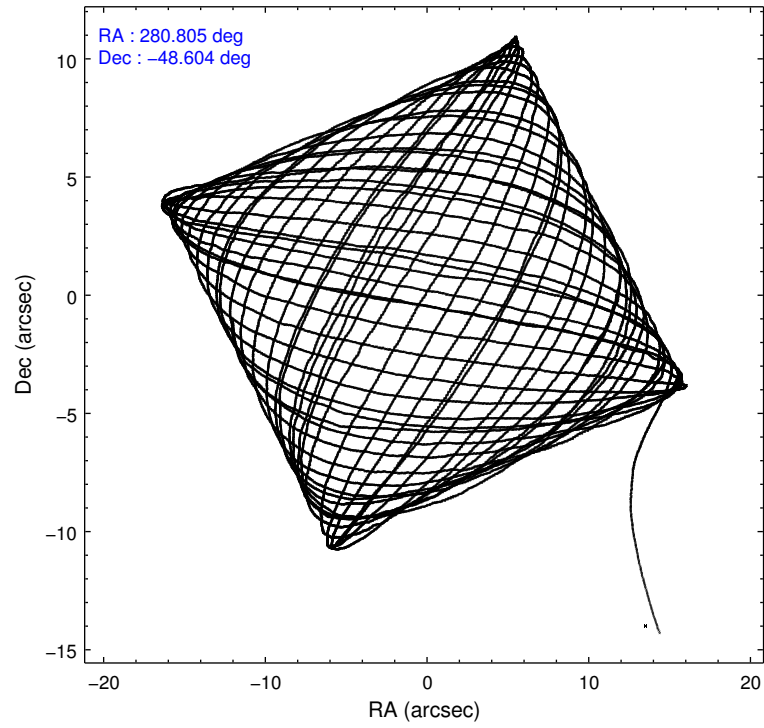
2.1.4 Events

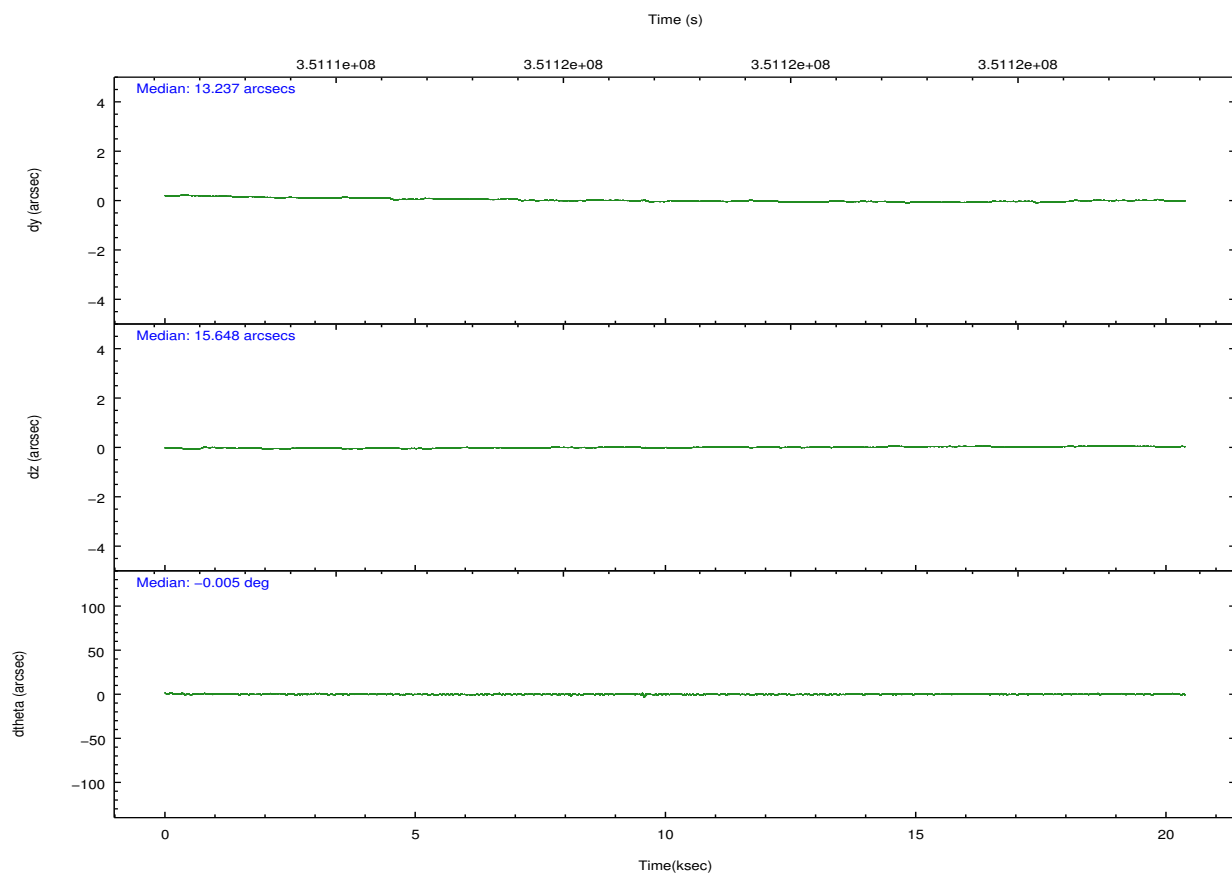
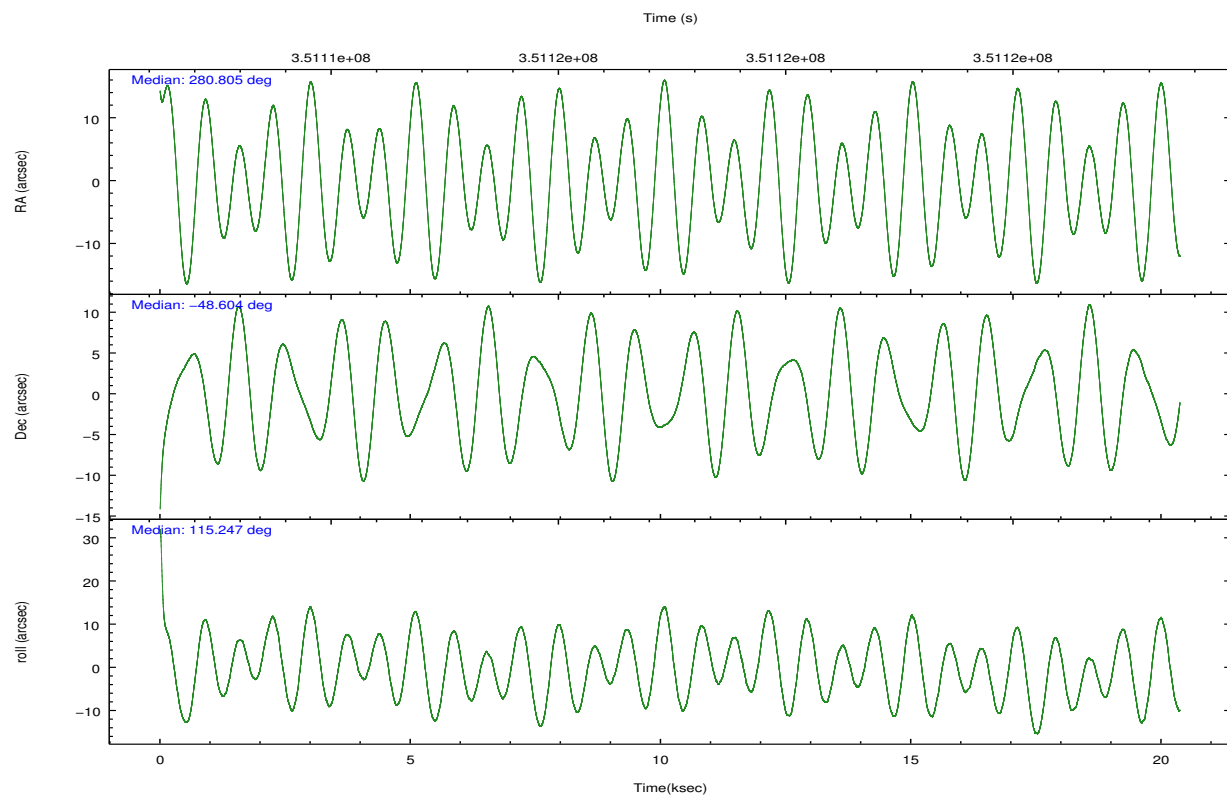
	ccd 2	ccd 3	ccd 5	ccd 6	ccd 7	ccd 8		ccd 2	ccd 3	ccd 5	ccd 6	ccd 7	ccd 8
level 1 events	179099	162294	243433	171749	199444	213804	grade 0 events	6796	6172	19710	8282	11463	16910
rejected events	161233	145928	117150	151594	101902	159459		3%	3%	8%	4%	5%	7%
rejected %	90%	89%	48%	88%	51%	74%	grade 1 events	109	108	1568	120	241	183
								0%	0%	0%	0%	0%	0%
							grade 2 events	4260	3514	35903	4161	20520	12404
								2%	2%	14%	2%	10%	5%
							grade 3 events	1799	1769	4969	1917	9195	5369
								1%	1%	2%	1%	4%	2%
							grade 4 events	1858	1782	4764	1946	9083	5153
								1%	1%	1%	1%	4%	2%
							grade 5 events	5754	6782	18645	6962	19879	9853
								3%	4%	7%	4%	9%	4%
							grade 6 events	3156	3131	60966	3852	47292	14513
								1%	1%	25%	2%	23%	6%
							grade 7 events	155367	139036	96908	144509	81771	149419
								86%	85%	39%	84%	40%	69%

2.2 Compared Parameters

Parameter	Planned	Actual	Parameter	Planned	Actual
Instrument	ACIS	ACIS	Obspar format version number	7	7
Detector	ACIS-235678	ACIS-235678	Obspar file type	PREDICTED	ACTUAL
Grating	NONE	NONE	Obspar update status	NONE	UPDATED
Data mode	VFAINT	VFAINT	CCD I0 on	N	N
Observation mode	POINTING	POINTING	CCD I1 on	N	N
[deg] Pointing RA	280.838990	280.8047218883991	CCD I2 on	O1	Y
[deg] Pointing Dec	-48.619094	-48.60384683022003	CCD I3 on	O2	Y
[deg] Pointing Roll	115.121891	115.2528131698845	CCD S0 on	N	N
[mm] SIM focus pos	-0.684267	-0.6828225247311905	CCD S1 on	O3	Y
[mm] SIM defocus	0	0.001444936568705701	CCD S2 on	Y	Y
[mm] SIM translation stage pos	-190.132523	-190.1400660498719	CCD S3 on	Y	Y
[mm] SIM translation stage offset	0	0.00754346686406393	CCD S4 on	Y	Y
[s] Observation start time (MET)	351107643.184000	351106534.14336	CCD S5 on	N	N
Observation start date	2009-02-15T17:52:57	2009-02-15T17:35:34	Number of optional ACIS chips dropped	0	0
[s] Observation end time (MET)	351127643.184000	351128164.20693	On-chip summing requested	N	N
Observation end date	2009-02-15T23:26:17	2009-02-15T23:36:04	Subarray requested	NONE	NONE
Read mode	TIMED	TIMED	Alternating exposures requested	N	N
			[s] Primary exposure time	0.000000	3.2

2.3 Aspect



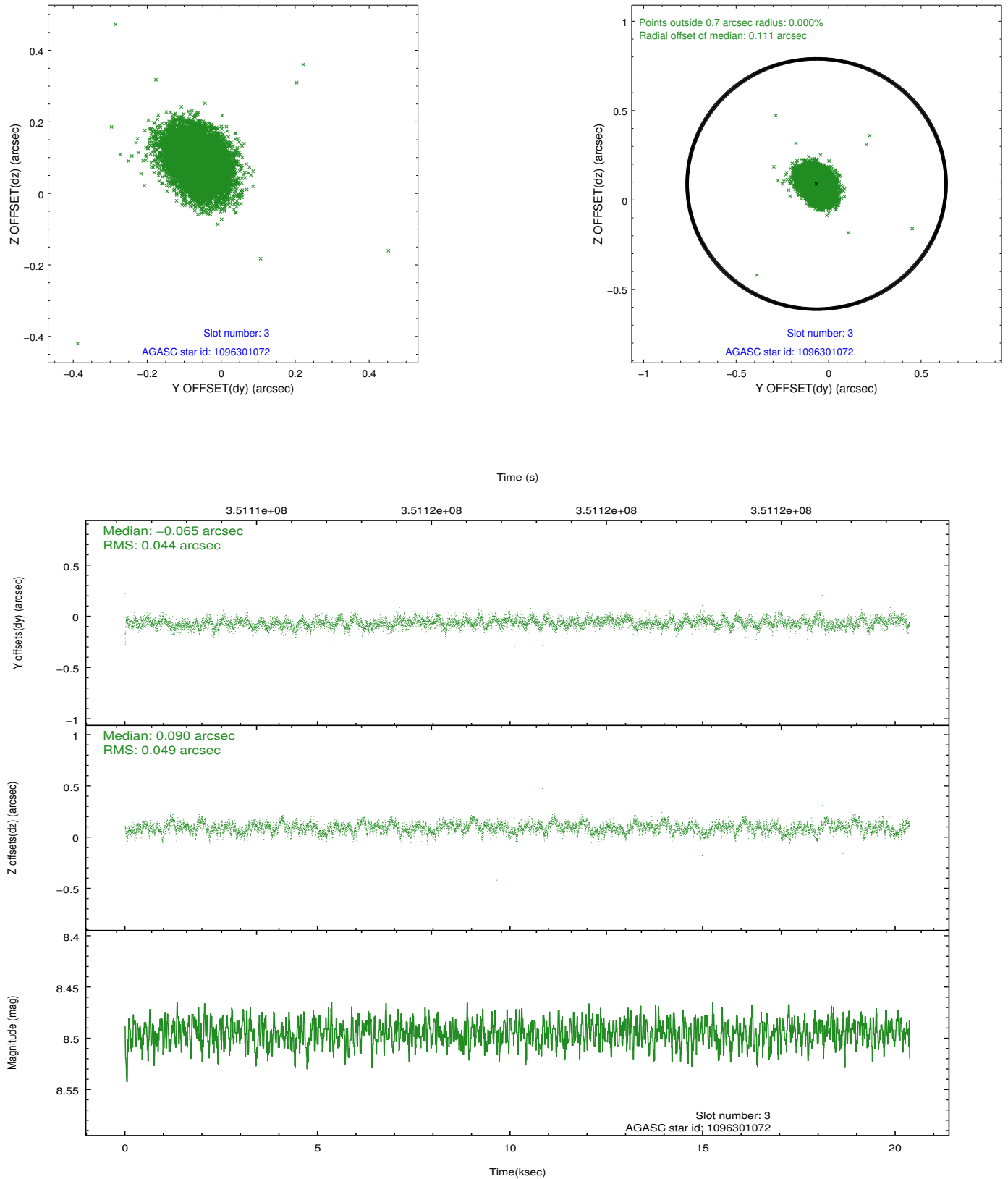


Slot Statistics

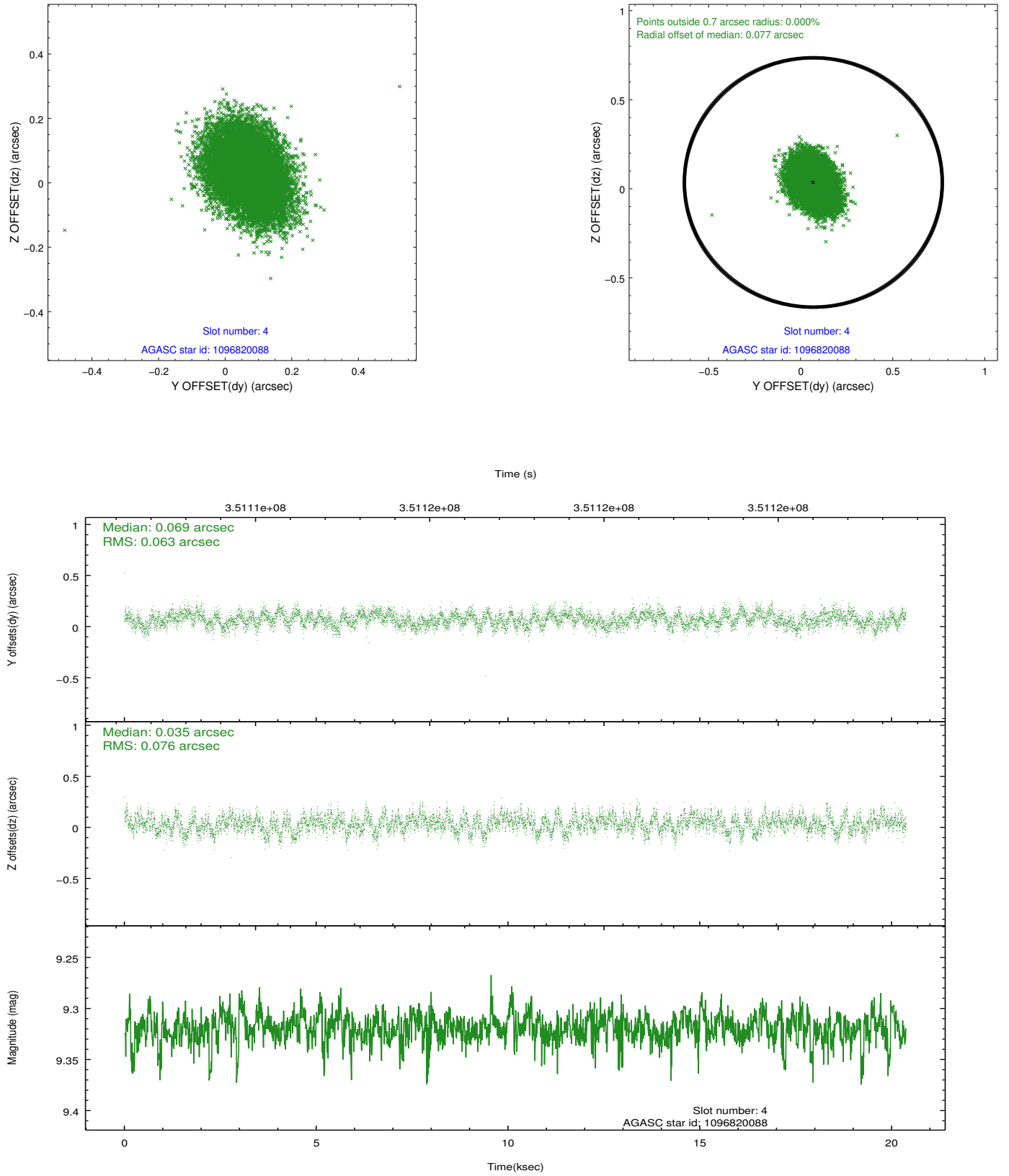
slot	status	id	mag	n_pts	med_dy	med_dz	dr1	dr2	ra	dec	mean_y	mean_z
0	FID	ACIS-S-2	6.88	4970	-0.044	-0.018	0.008	0.014	0.000000	0.000000	-766.20	-1737.07
1	FID	ACIS-S-4	6.96	4970	0.166	0.026	0.008	0.014	0.000000	0.000000	2147.18	171.31
2	FID	ACIS-S-5	6.99	4970	-0.152	0.000	0.008	0.014	0.000000	0.000000	-1818.94	165.10
3	GUIDE	1096301072	8.49	9931	-0.065	0.090	0.069	0.112	280.805842	-48.388316	786.15	-280.66
4	GUIDE	1096820088	9.32	9924	0.069	0.035	0.106	0.170	280.443653	-48.989649	-813.18	1413.09
5	GUIDE	1096823104	7.54	9931	-0.054	-0.161	0.066	0.106	280.787526	-48.824321	-617.21	424.27
6	GUIDE	1098003232	6.87	9940	0.029	-0.020	0.060	0.095	281.391182	-48.459520	-43.53	-1434.90
7	GUIDE	1098519960	7.31	9939	0.014	0.058	0.059	0.094	281.310023	-48.989246	-1681.88	-440.16

2.4 Star Slots

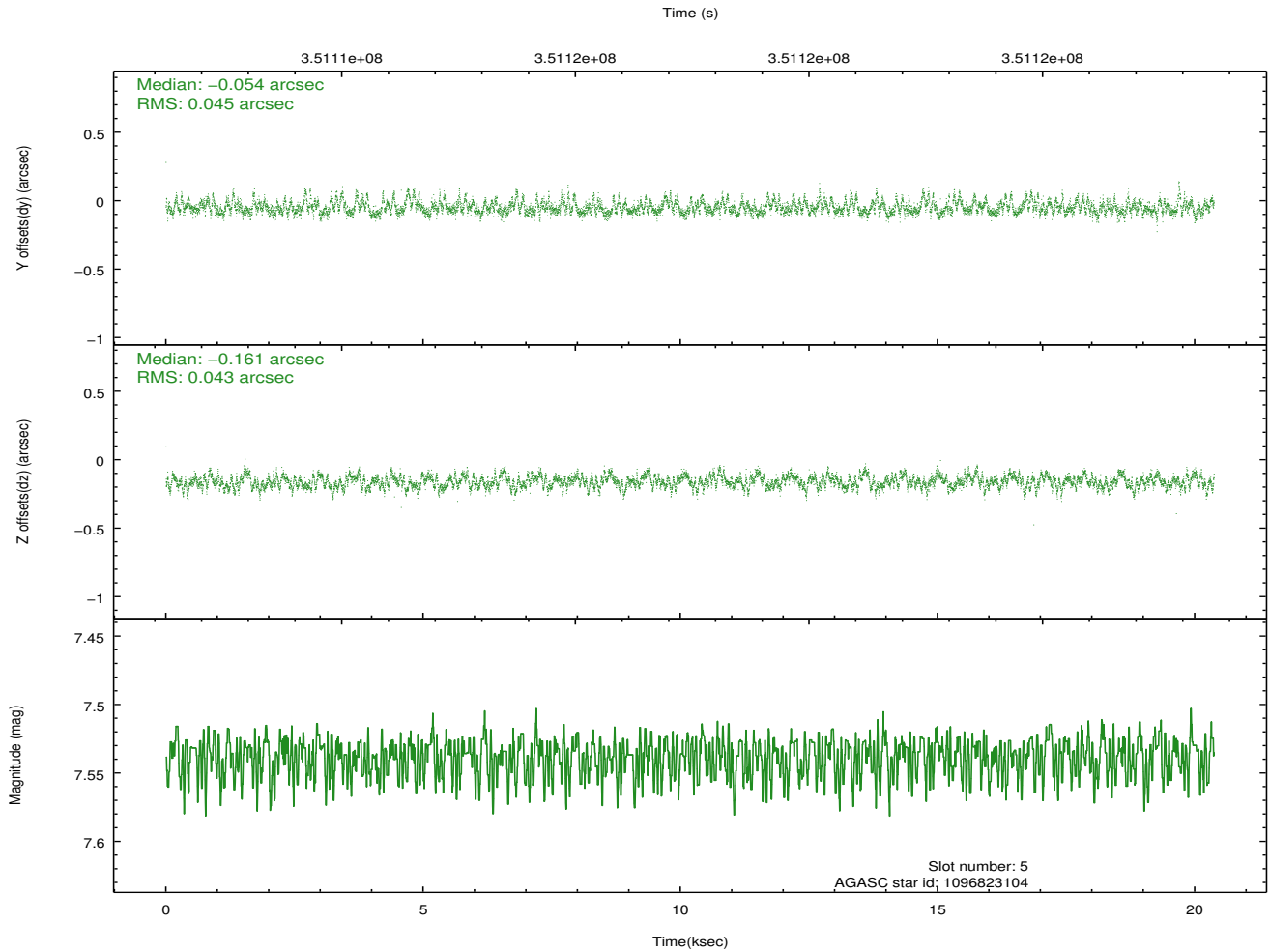
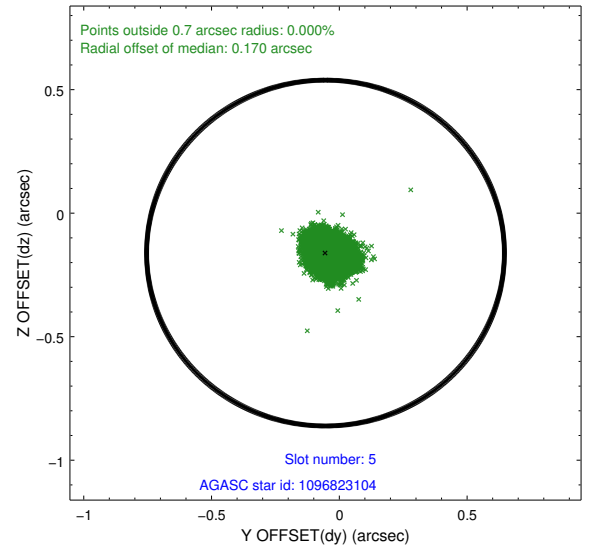
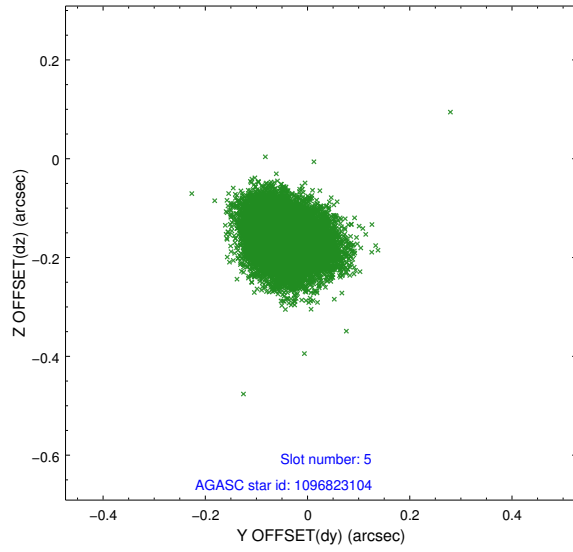
2.4.1 Slot 3



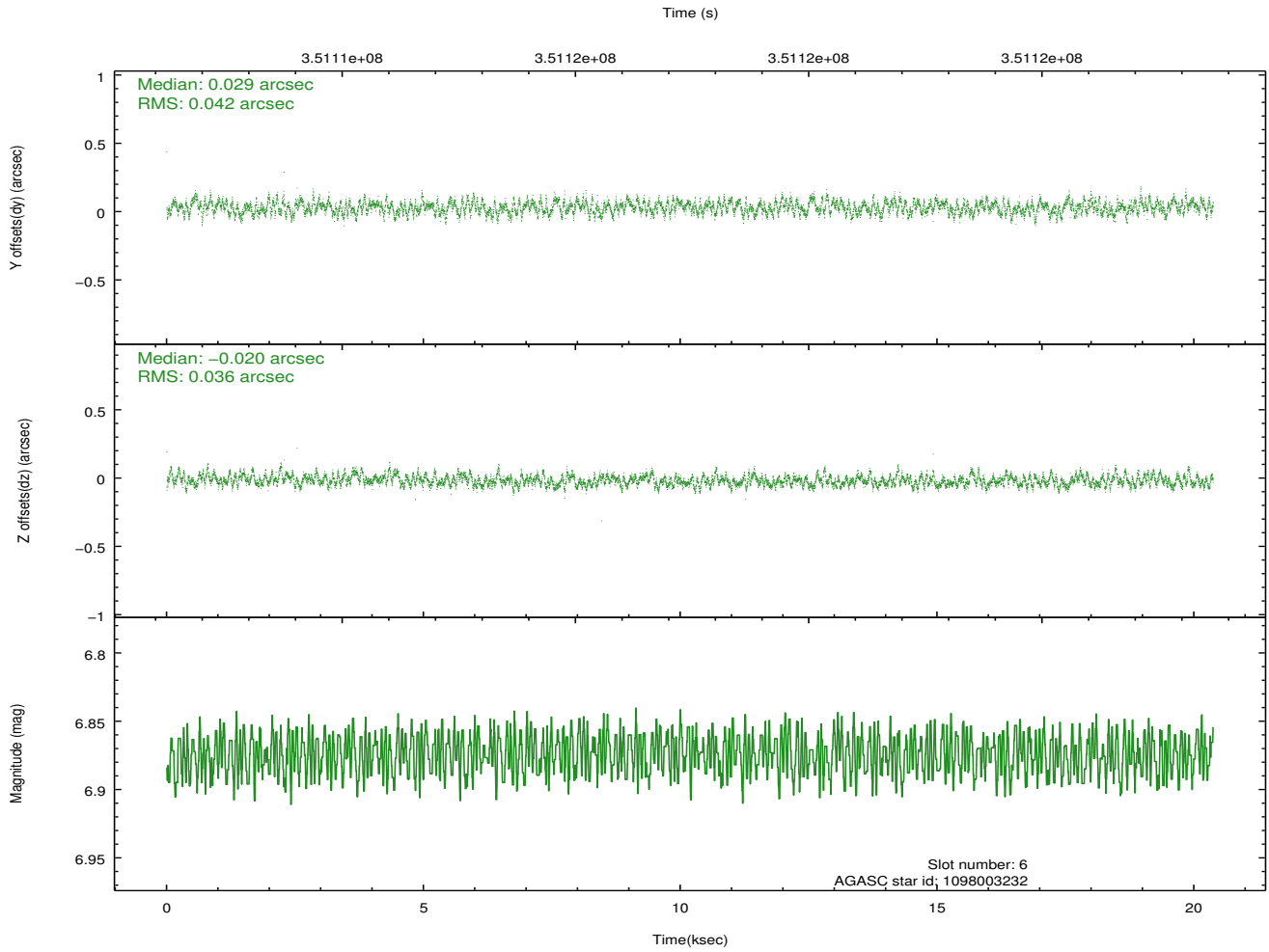
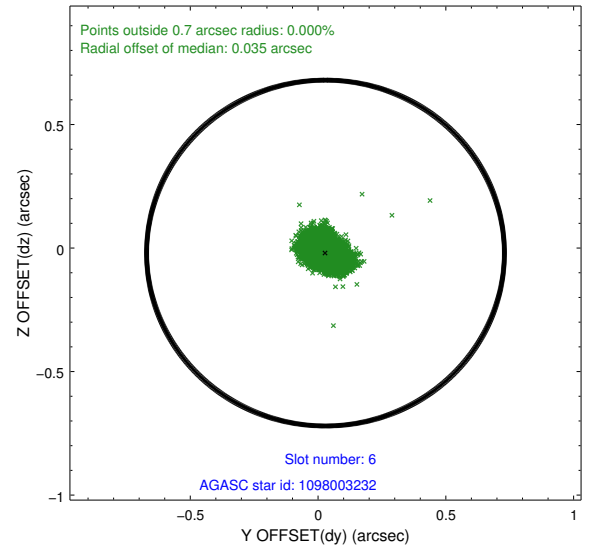
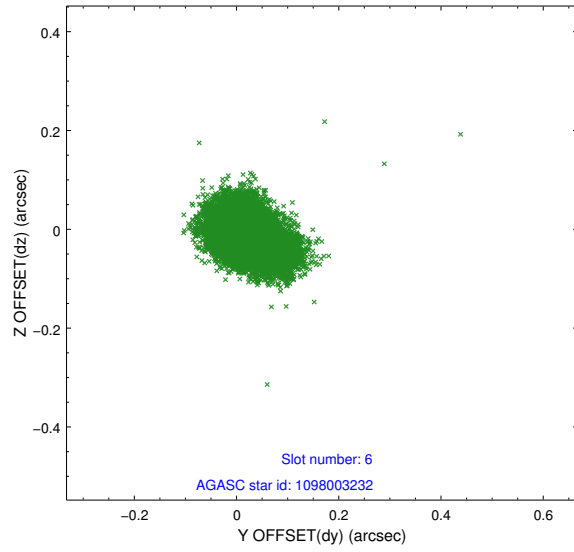
2.4.2 Slot 4



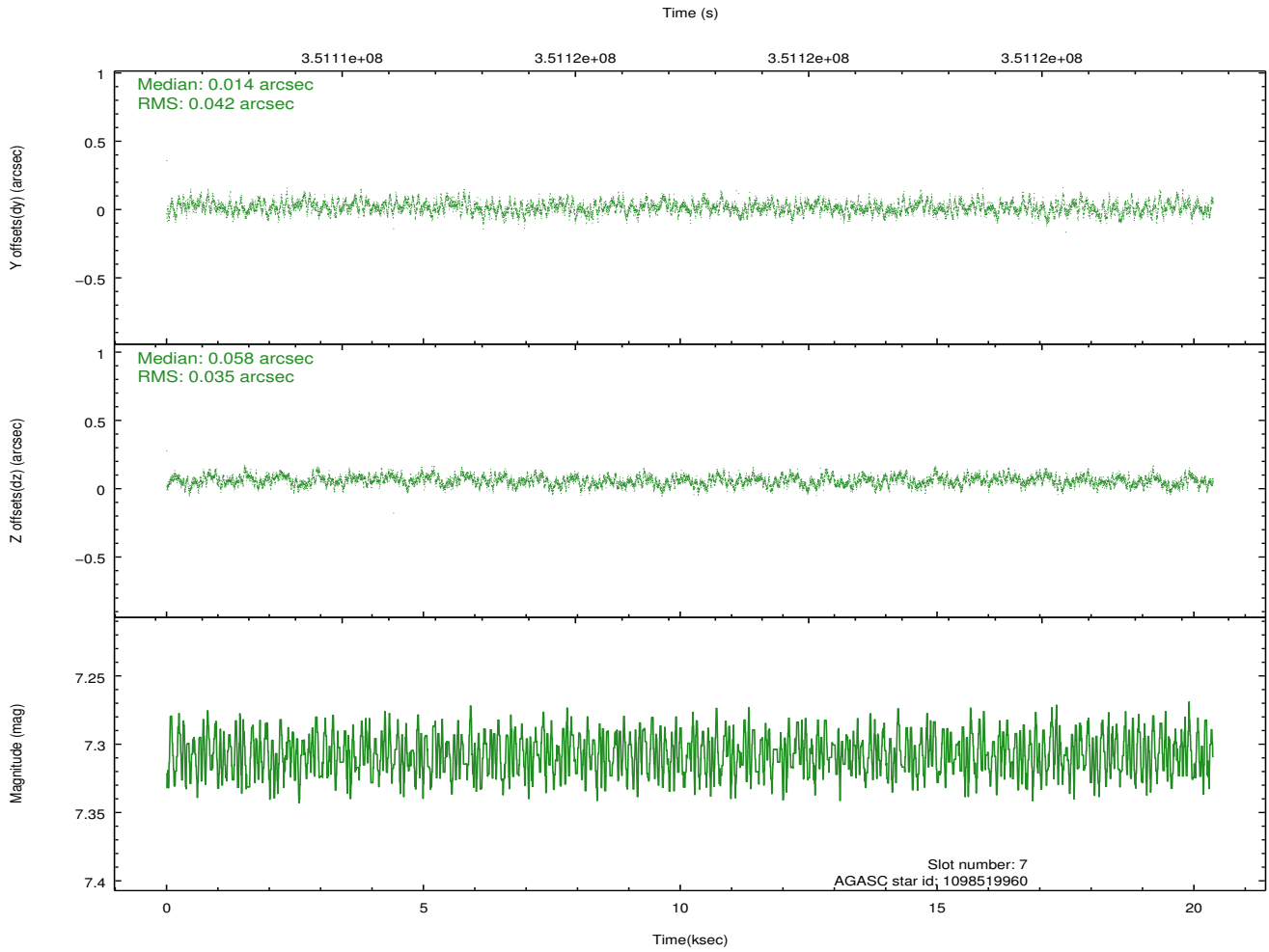
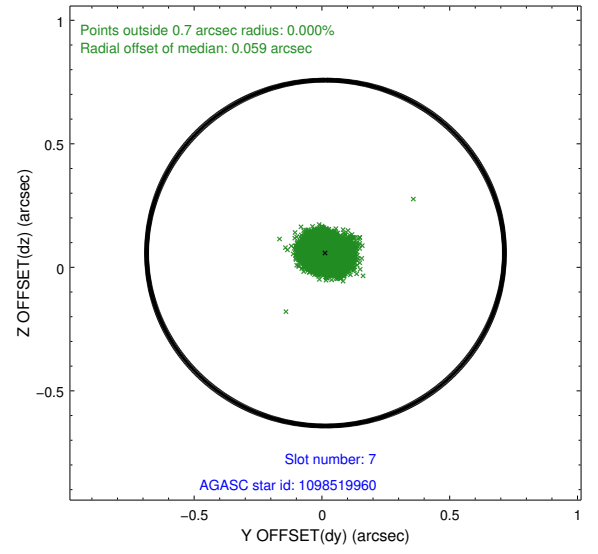
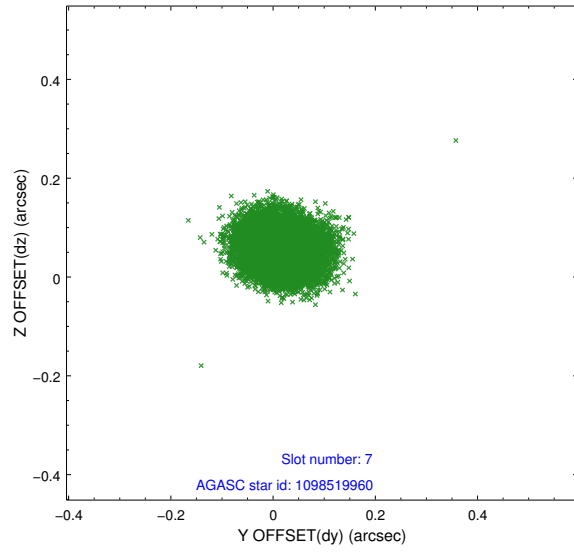
2.4.3 Slot 5



2.4.4 Slot 6

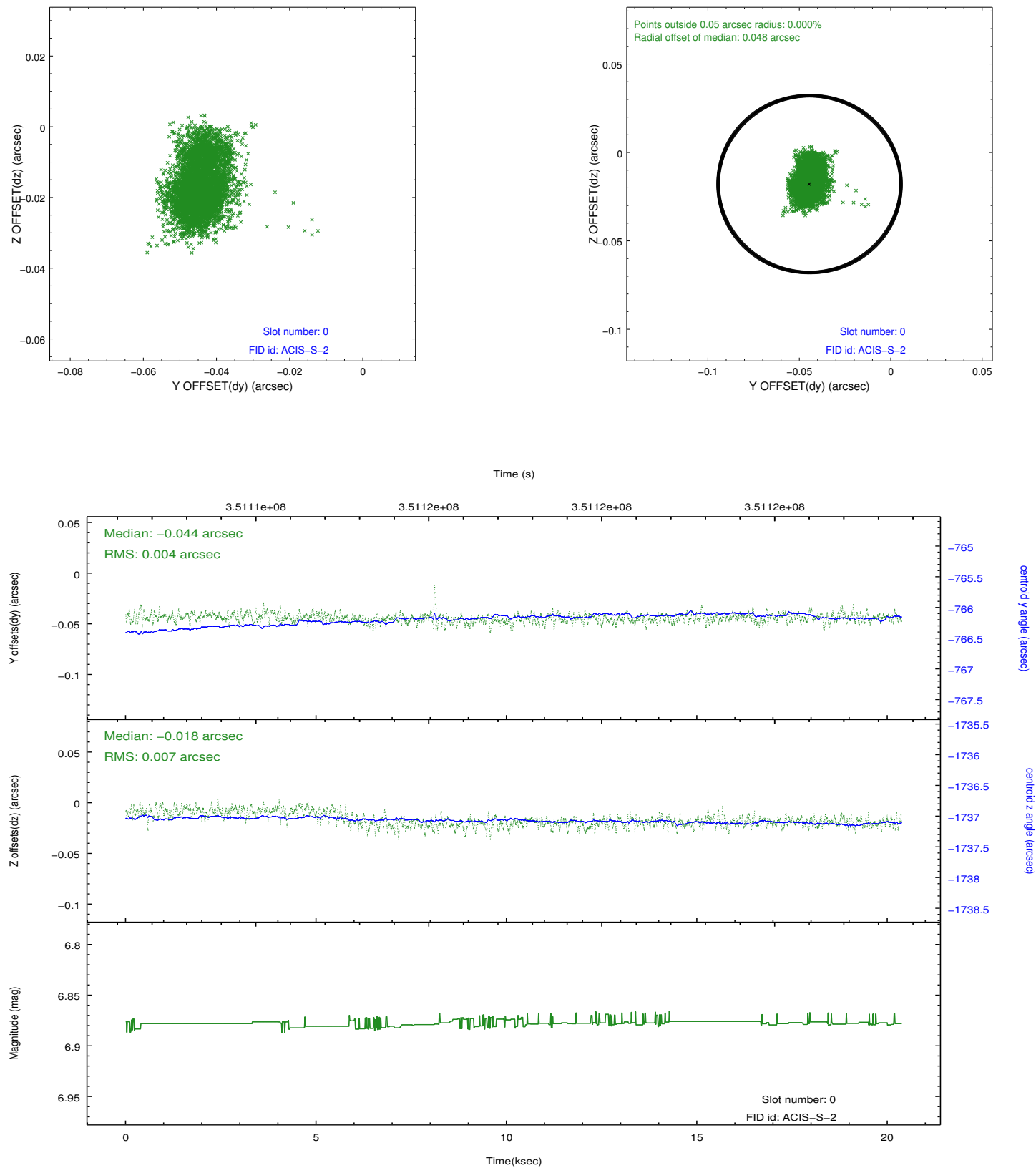


2.4.5 Slot 7

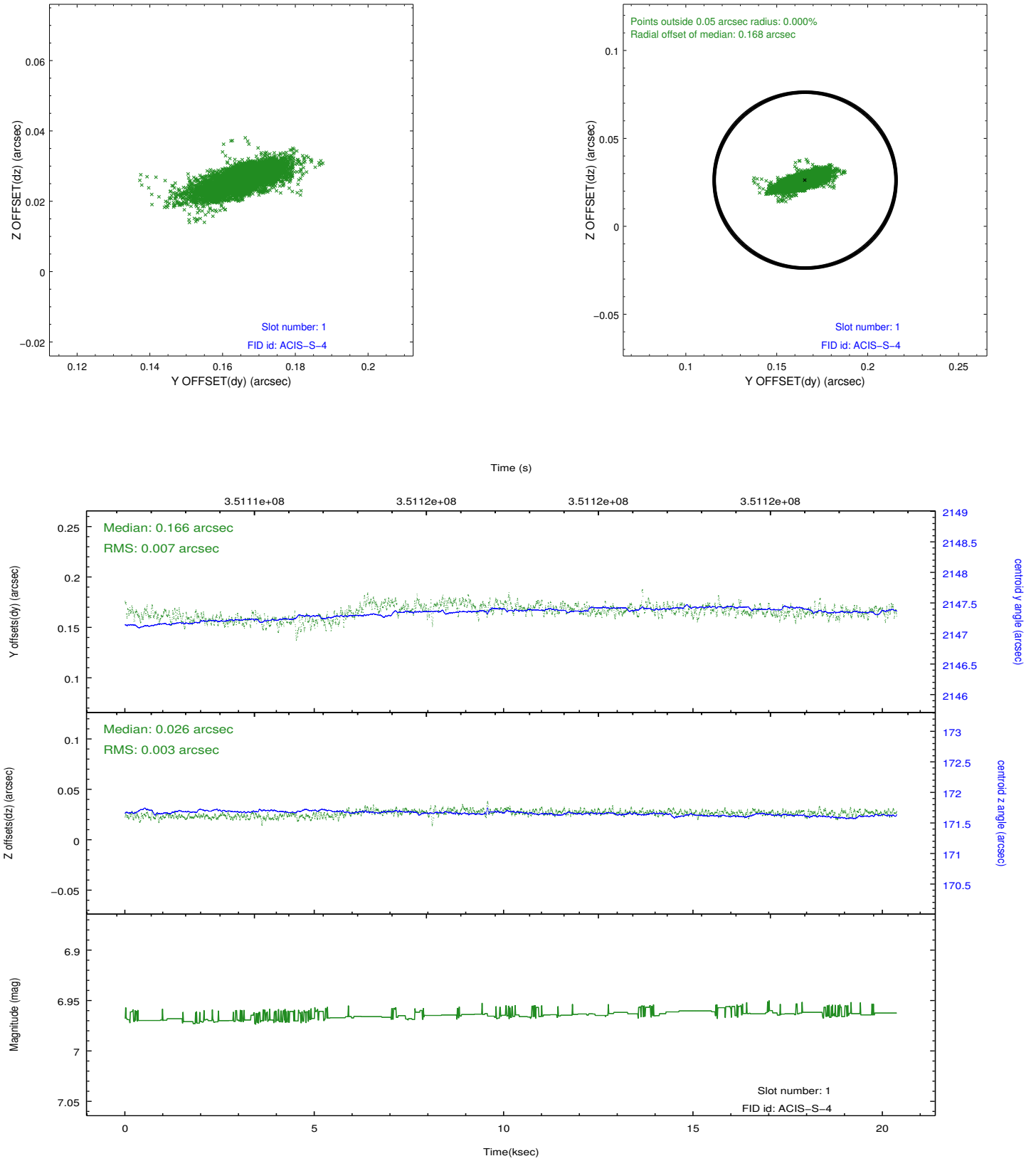


2.5 FID Slots

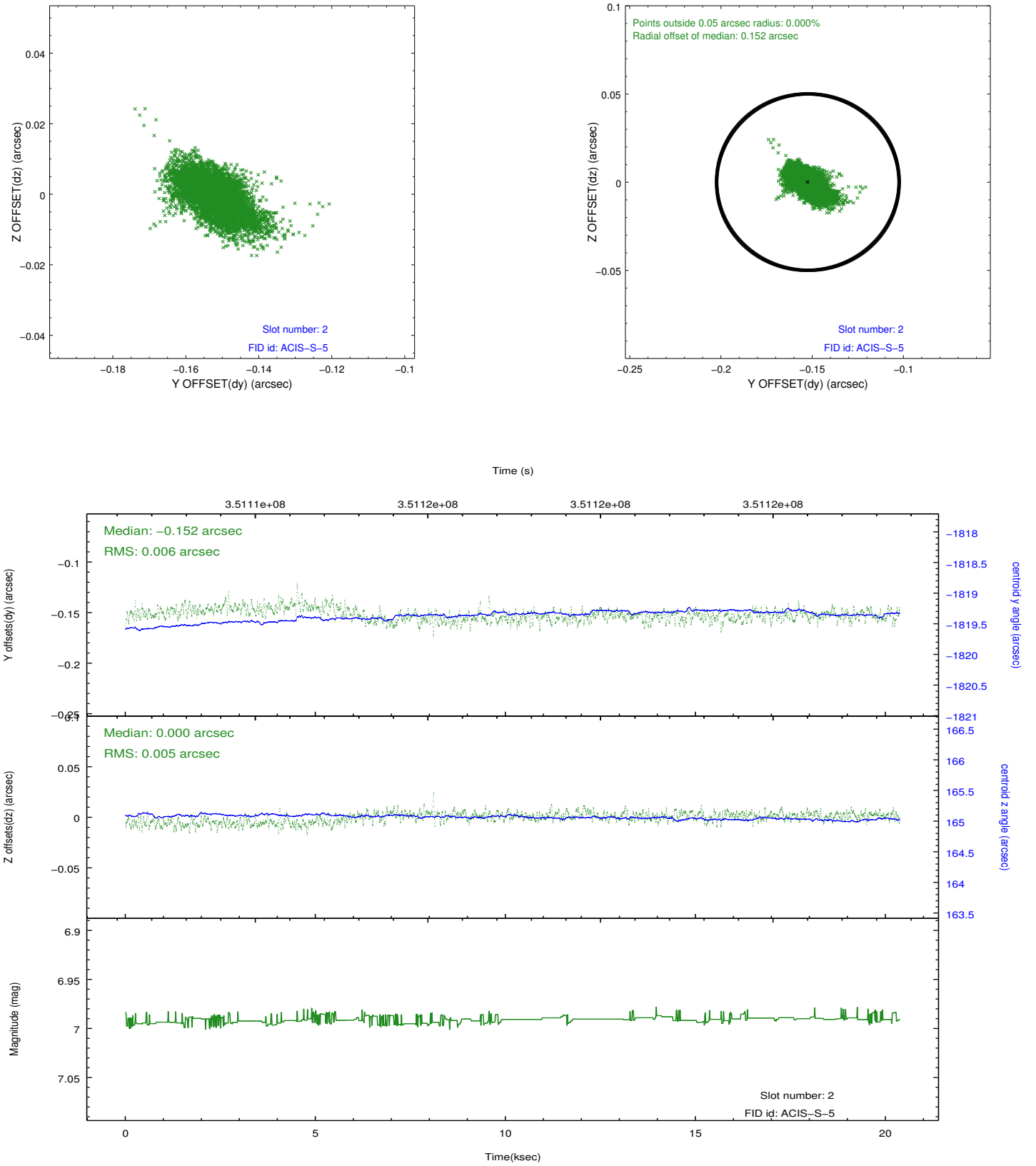
2.5.1 Slot 0



2.5.2 Slot 1



2.5.3 Slot 2



A Summary

A.1 Status

V&V Scientist	Joy Nichols
V&V Date (YYYY-MM-DD)	2012.06.05
V&V Edition	1
V&V Disposition and Status	OK
V&V Charge Time	20.041599925339

A.2 Comments