

V&V Reference Report

L2 ASCDS Version : 8.4.5

Observation 1011 - L2 Version 4
Chandra X-Ray Center

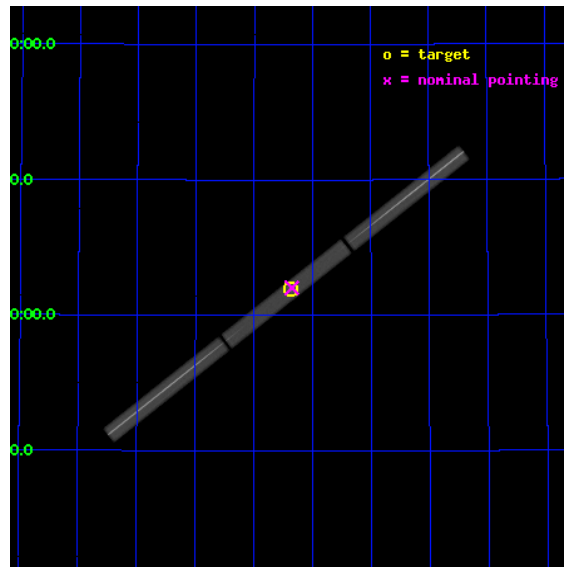
L2 Processing Date : Sep 14 2012

Contents

1	Front	2
2	OBI	3
2.1	OBI	3
2.1.1	Images	3
2.1.2	Parameters	4
2.1.3	Events	4
2.2	Compared Parameters	5
2.3	Aspect	6
2.4	Star Slots	9
2.4.1	Slot 3	9
2.4.2	Slot 4	10
2.4.3	Slot 5	11
2.4.4	Slot 6	12
2.4.5	Slot 7	13
2.5	FID Slots	14
2.5.1	Slot 0	14
2.5.2	Slot 1	15
2.5.3	Slot 2	16
3	Gratings	17
3.1	LETG Arm	17
A	Summary	19
A.1	Status	19
A.2	Comments	19

1 Front

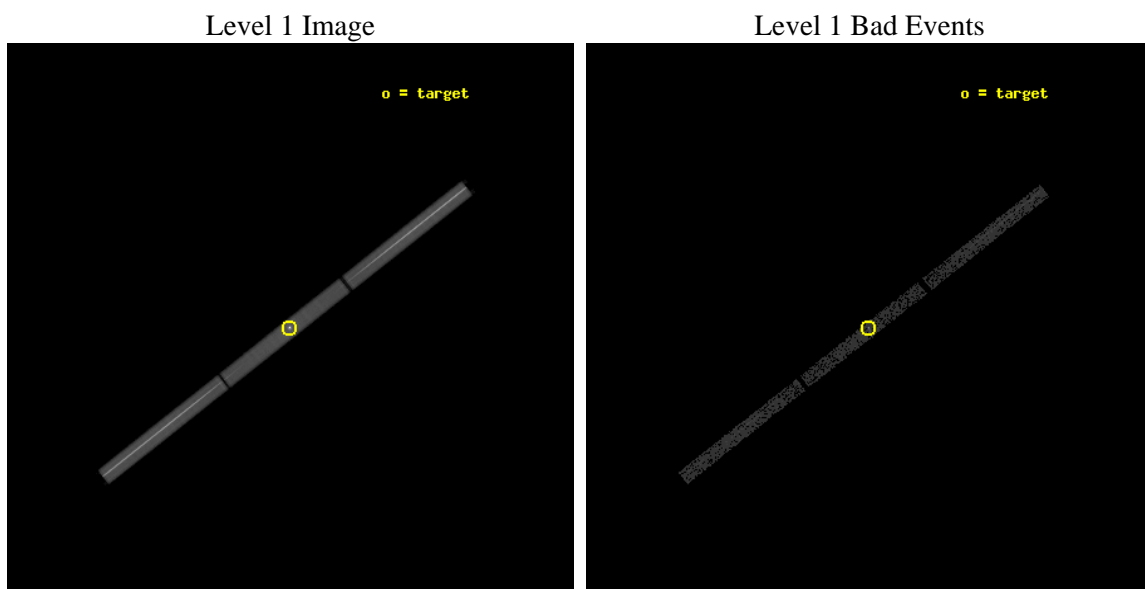
seq_num	390003	Sequence number
obs_id	1011	Observation id
title	GRATINGS CALIBRATION OBSERVATIONS OF HZ43 AND CAPELLA	Proposal tit
observer	Dr. CXC Calibration	Principal investigator
object	HZ43	Source name
ra_targ	199.092083	Observer's specified target RA [deg]
dec_targ	29.099	Observer's specified target Dec [deg]
ra_nom	199.08789577358	Nominal RA [deg]
dec_nom	29.102086313911	Nominal Dec [deg]
roll_nom	141.75190293314	Nominal Roll [deg]
revision	4	Processing version of data
ontime	18761.856975898	[s]
livetime	18600.420673891	Ontime multiplied by DTCOR
l2events	1567330	Number of level 2 events



2 OBI

2.1 OBI

2.1.1 Images



2.1.2 Parameters

obi_num	0	Obi number	sched_exp_time	18780.000000	[s] Scheduled observation exposure time
ascdsver	8.4.5	Processing system revision	ontime	18761.856975898	[s]
caldbver	4.5.1.1	 	l1events	1982511	Number of level 1 events
date	2012-09-14T04:52:17	Date and time of file creation			
revision	4	Processing version of data			

2.1.3 Events

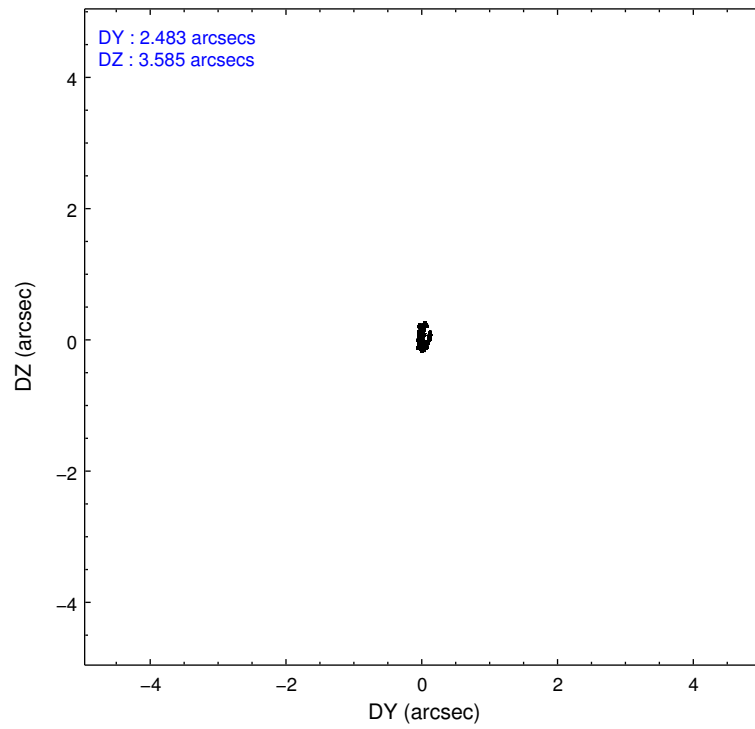
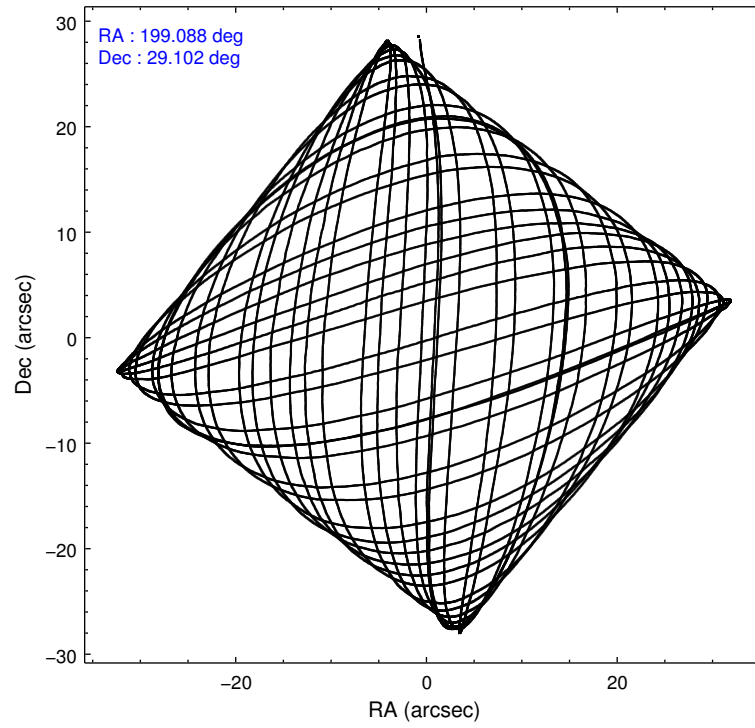
Level 1 Events

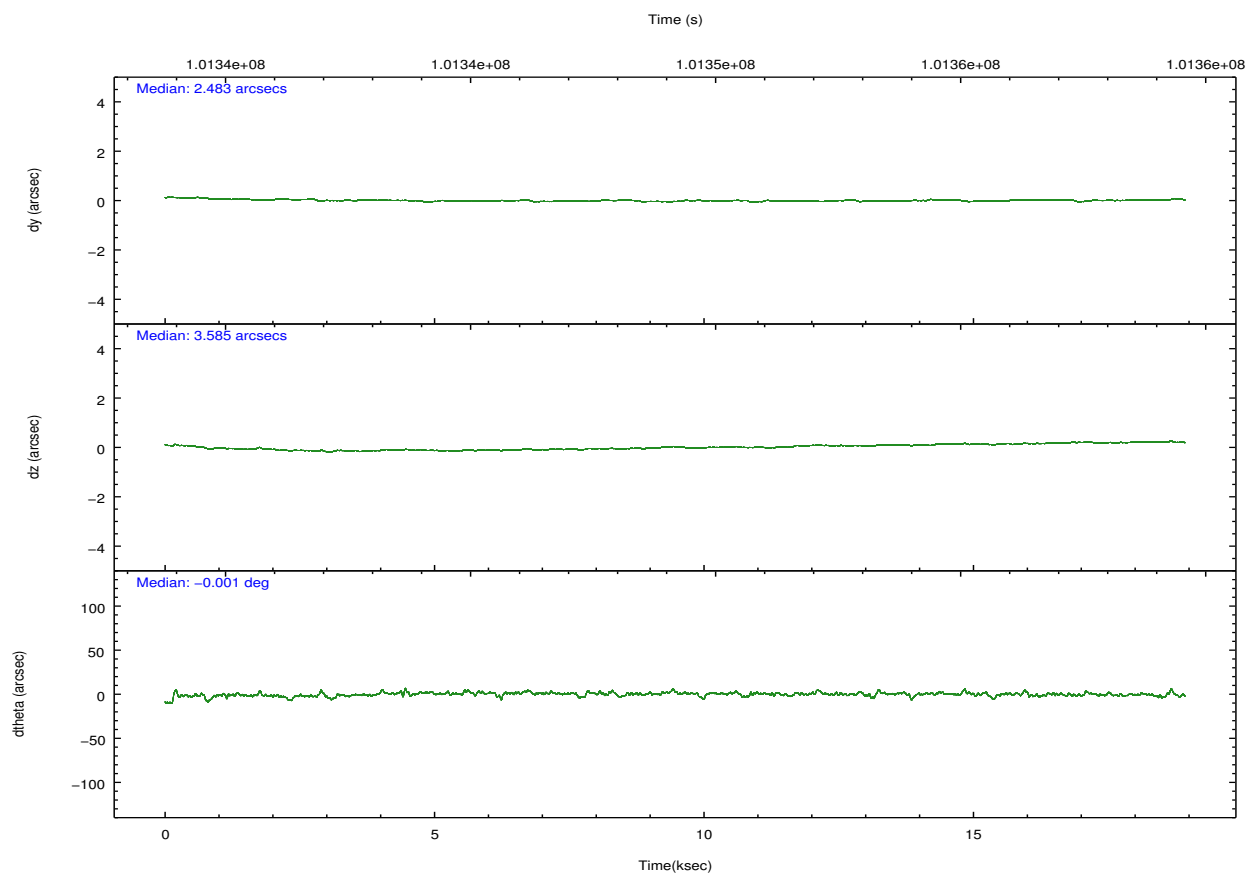
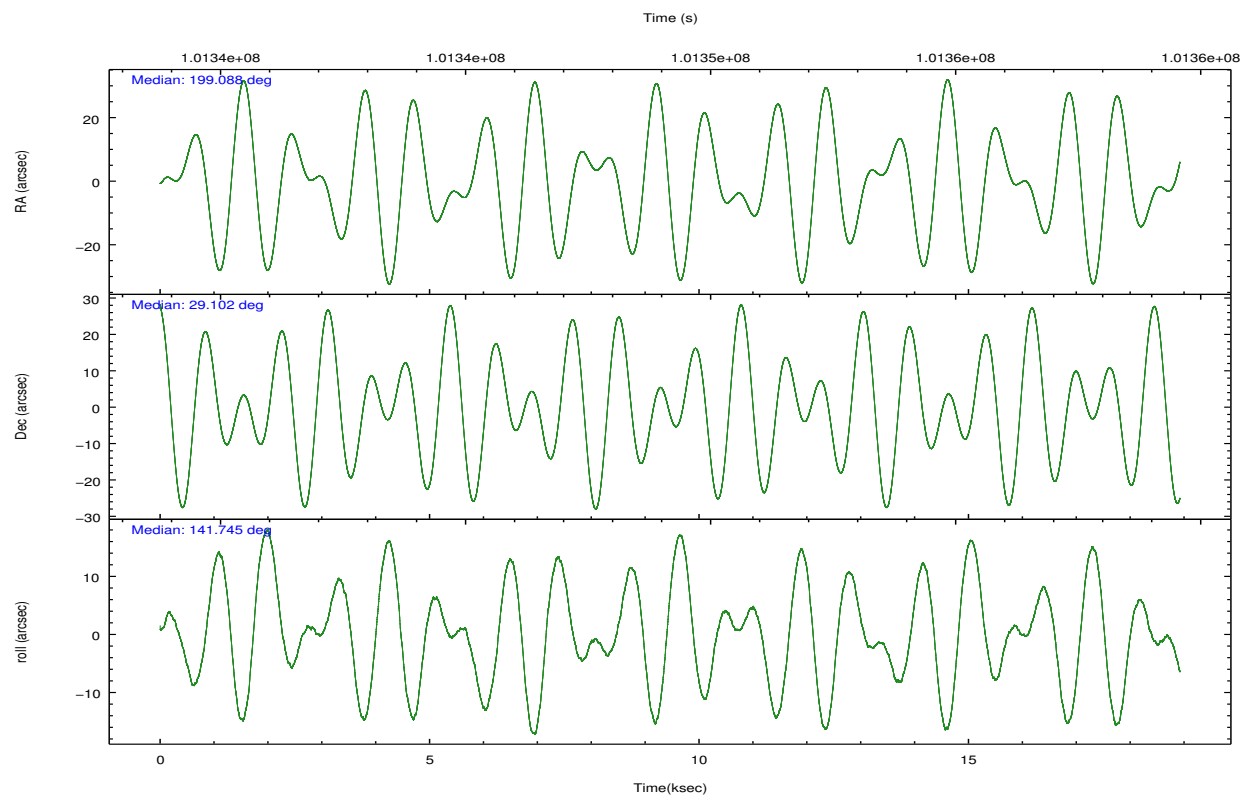
	segment 1	segment 2	segment 3
level 1 events	692507	586482	703522
rejected events	14513	13886	14863
rejected %	2%	2%	2%

2.2 Compared Parameters

Parameter	Planned	Actual	Parameter	Planned	Actual
Instrument	HRC	HRC	Obspar format version number	7	7
Detector	HRC-S	HRC-S	Obspar file type	PREDICTED	ACTUAL
Grating	LETG	LETG	Obspar update status	NONE	UPDATED
Data mode	OBSERVING	OBSERVING			
Observation mode	POINTING	POINTING			
[deg] Pointing RA	199.120561	199.0878957735834			
[deg] Pointing Dec	29.099303	29.10208631391072			
[deg] Pointing Roll	141.668675	141.7519029331356			
[s] Window start time (MET)	99792064.184000	99792064.184000			
[s] Window stop time (MET)	102384064.184000	102384064.184000			
[mm] SIM focus pos	-1.429586	-1.428180813131781			
[mm] SIM defocus	0.1037507710433287	0.1051558262725154			
[mm] SIM translation stage pos	250.455976	250.466033080201			
[mm] SIM translation stage offset	0	-0.01005468664627074			
[s] Observation start time (MET)	101339856.184000	101339428.83221			
Observation start date	2001-03-18T21:56:32	2001-03-18T21:50:28			
[s] Observation end time (MET)	101358636.184000	101359238.49547			
Observation end date	2001-03-19T03:09:32	2001-03-19T03:20:38			

2.3 Aspect



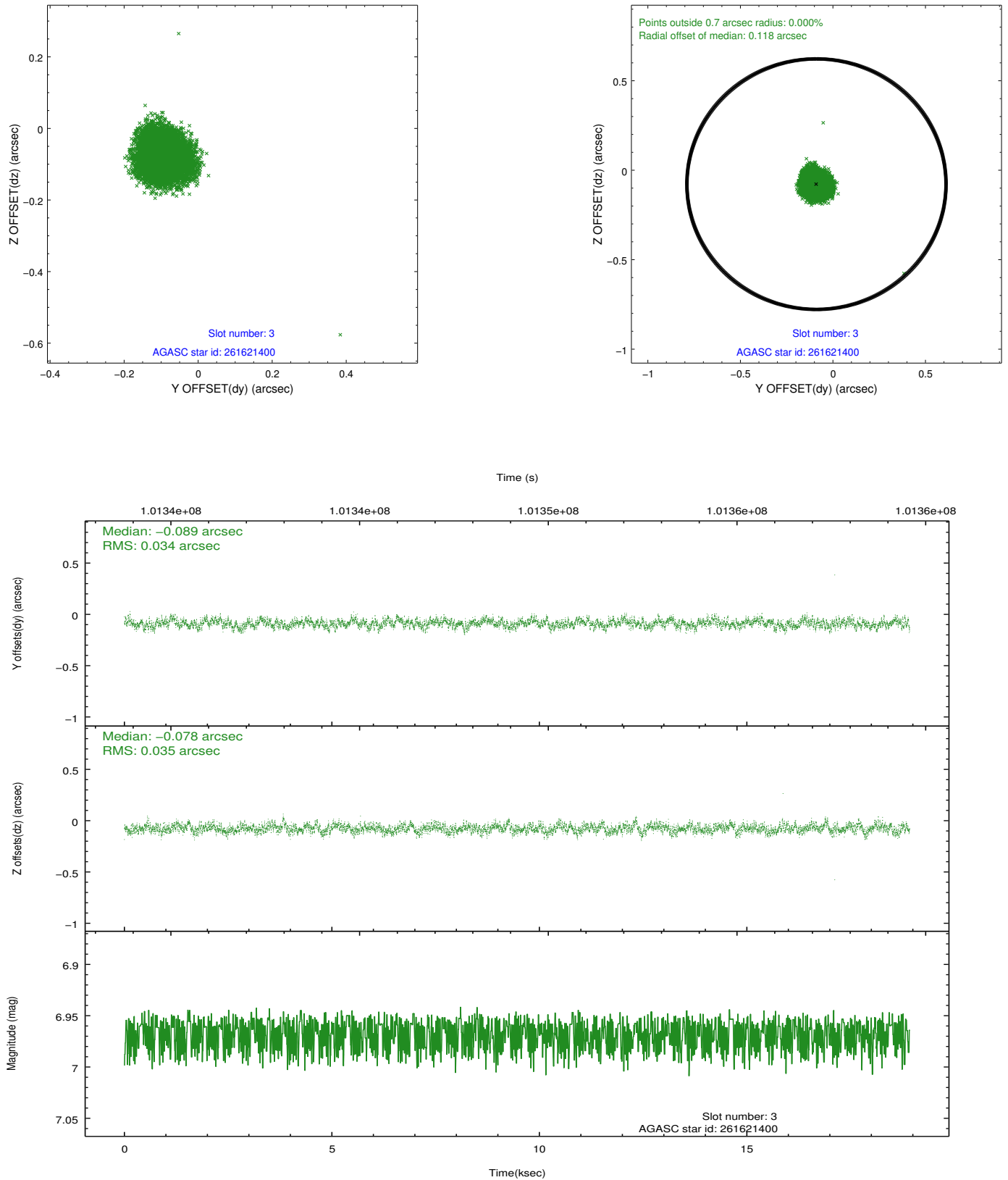


Slot Statistics

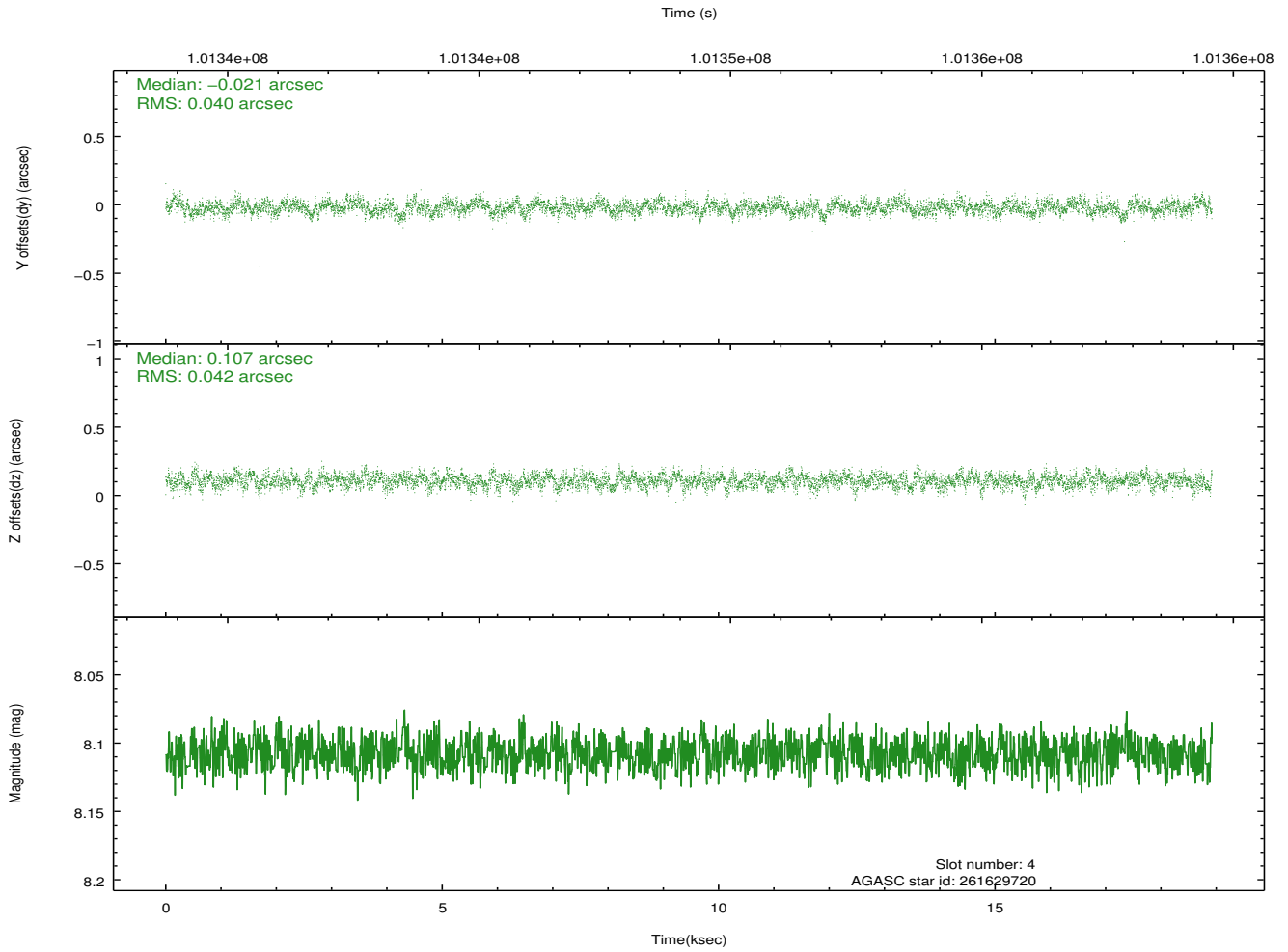
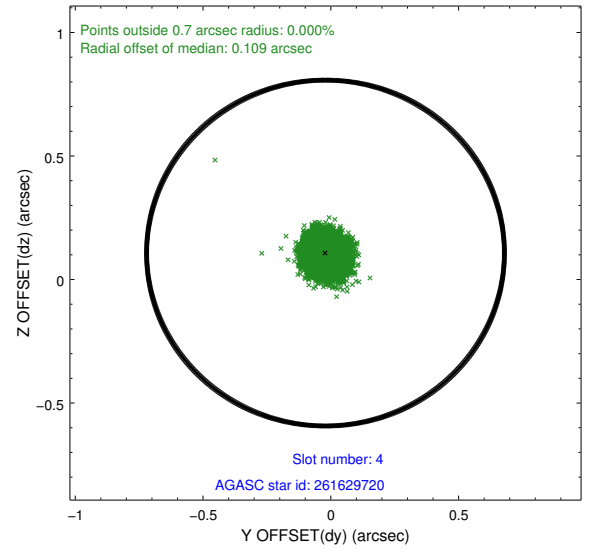
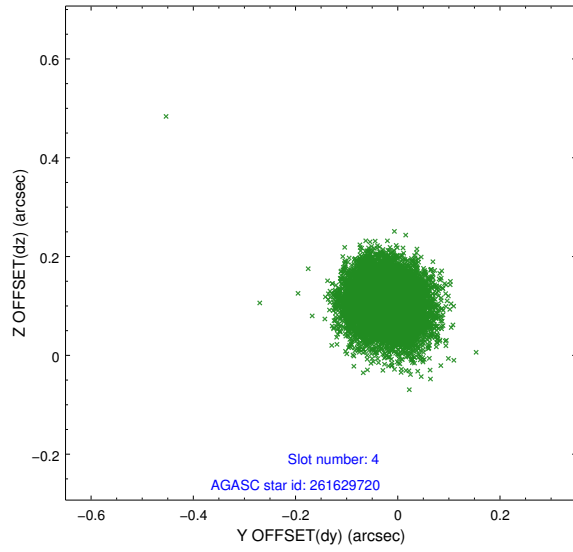
slot	status	id	mag	n_pts	med_dy	med_dz	dr1	dr2	ra	dec	mean_y	mean_z
0	FID	HRC-S-1	6.99	4616	0.139	-0.092	0.010	0.016	0.000000	0.000000	-1156.54	-451.98
1	FID	HRC-S-3	7.01	4616	0.116	-0.102	0.012	0.020	0.000000	0.000000	-1159.50	577.45
2	FID	HRC-S-4	6.96	4614	0.134	-0.104	0.008	0.017	0.000000	0.000000	1241.50	580.15
3	GUIDE	261621400	6.97	9232	-0.089	-0.078	0.052	0.084	198.901600	28.741982	-255.33	1436.97
4	GUIDE	261629720	8.11	9227	-0.021	0.107	0.062	0.099	199.236176	29.044452	-407.67	-70.87
5	GUIDE	261619776	8.81	9231	0.055	-0.157	0.064	0.107	198.654383	29.401174	1822.81	51.96
6	GUIDE	261623040	9.14	9229	-0.051	0.068	0.101	0.158	198.792686	29.757643	2275.12	-1224.57
7	GUIDE	261626376	9.70	9199	0.110	0.062	0.108	0.181	198.947288	29.347445	981.37	-363.96

2.4 Star Slots

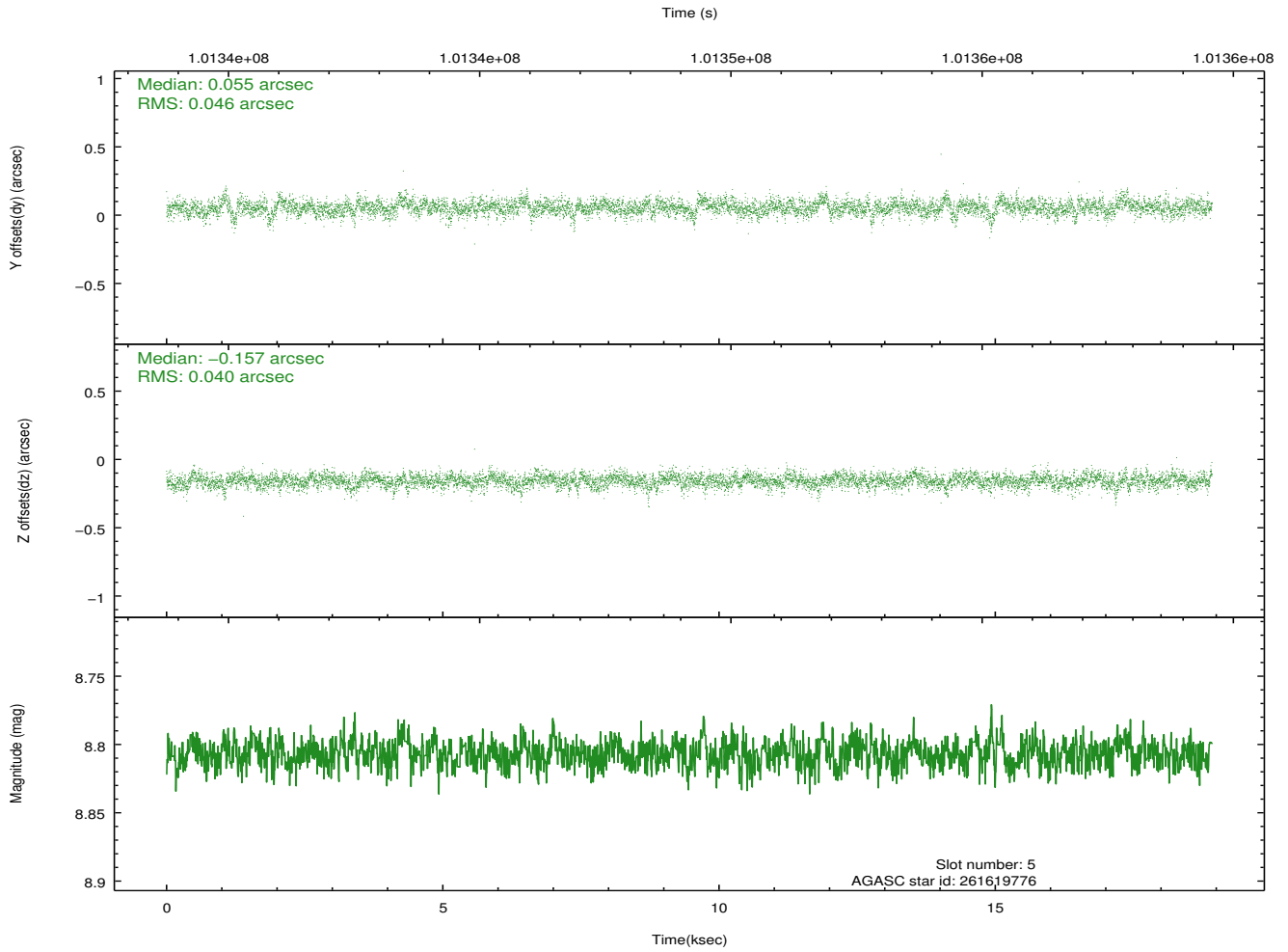
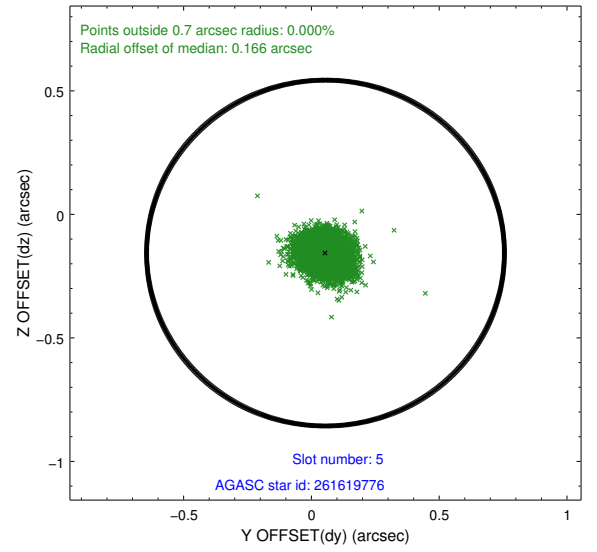
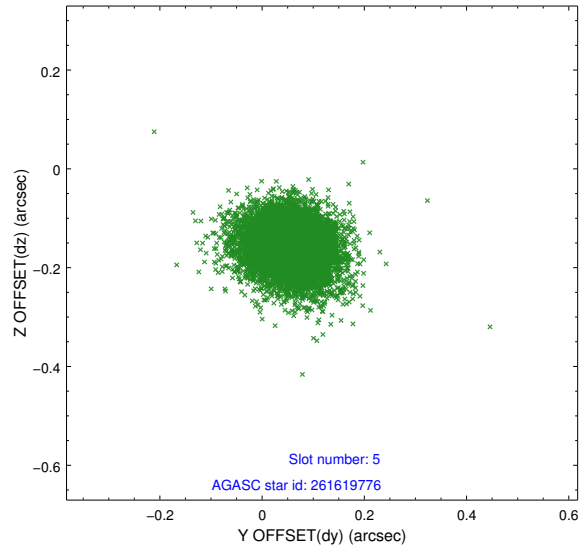
2.4.1 Slot 3



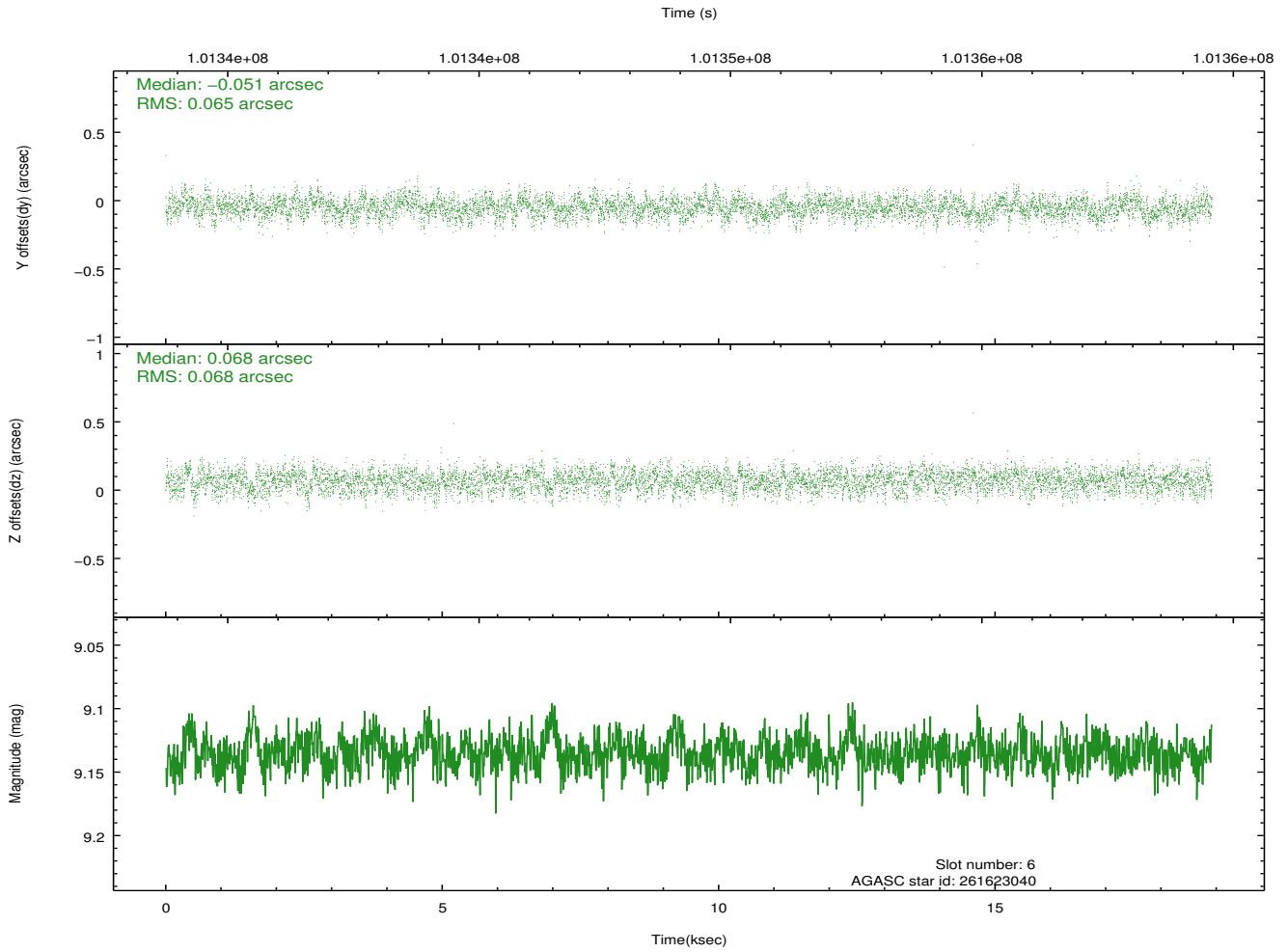
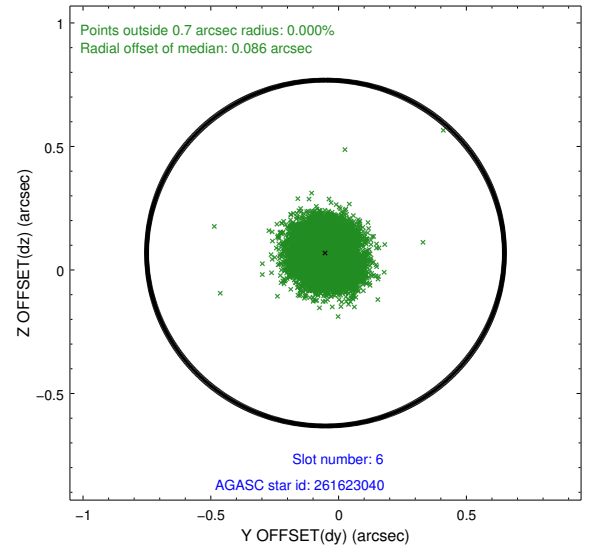
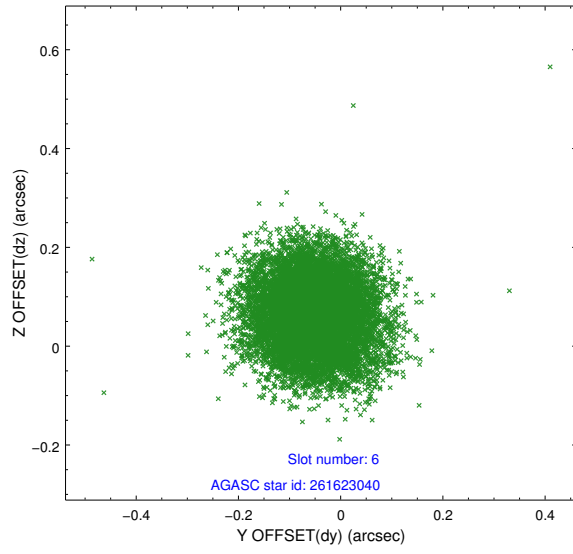
2.4.2 Slot 4



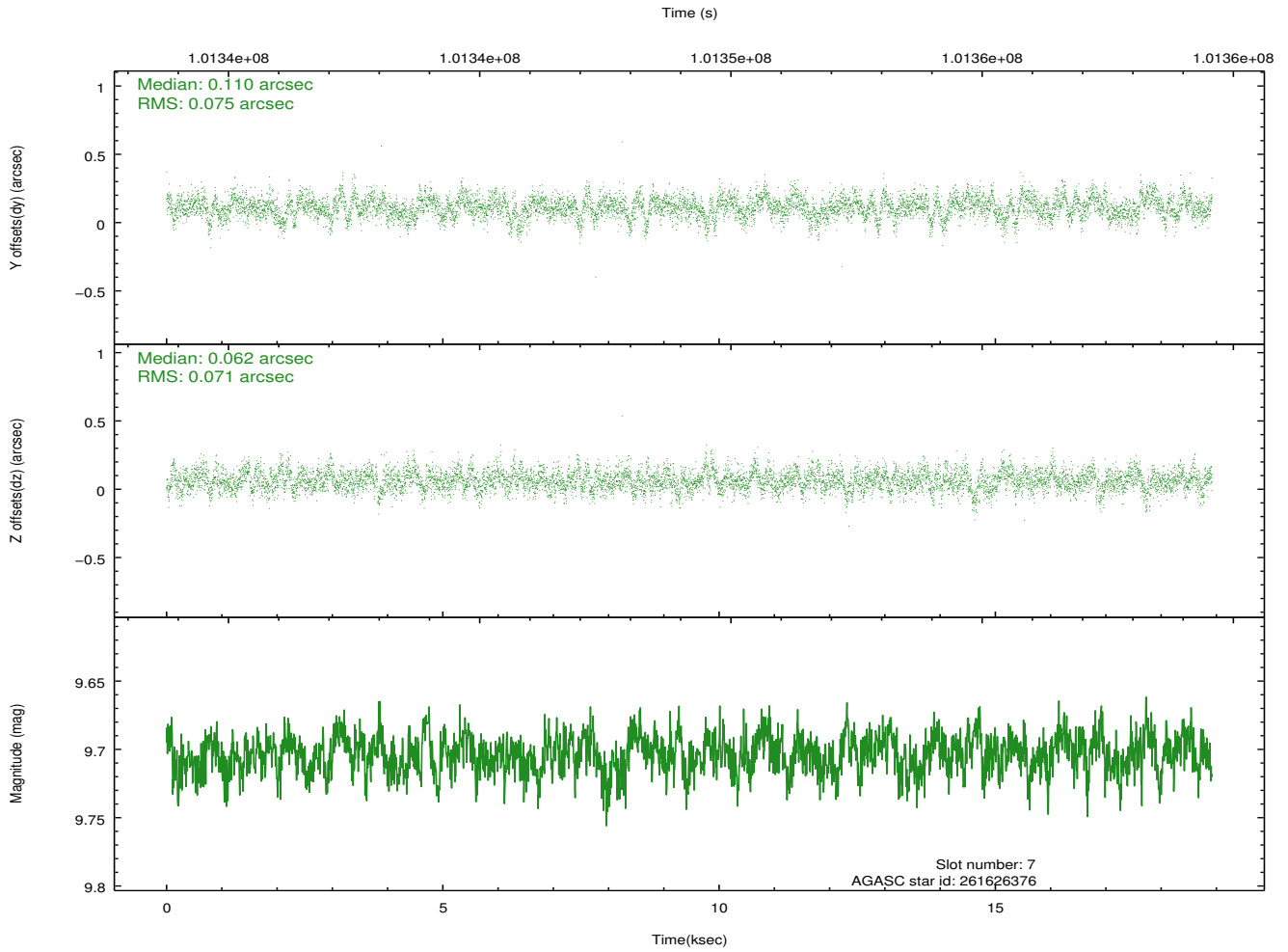
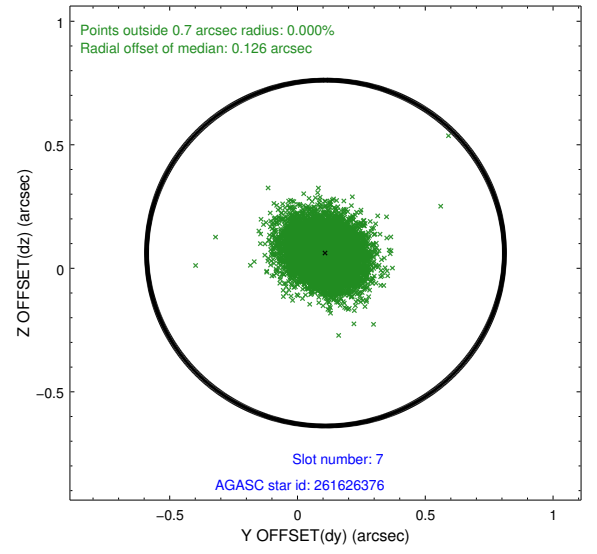
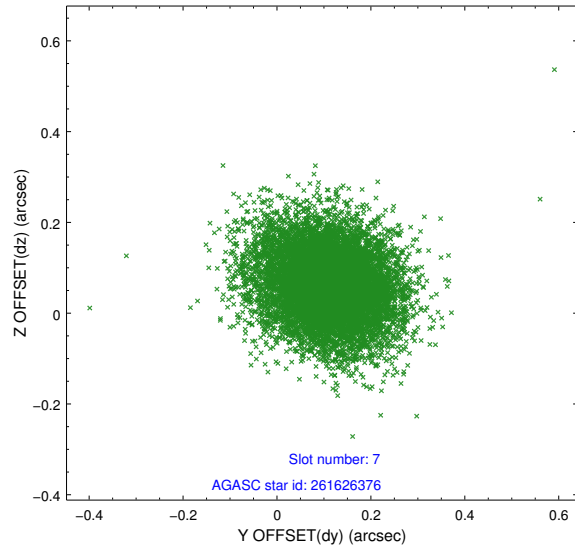
2.4.3 Slot 5



2.4.4 Slot 6

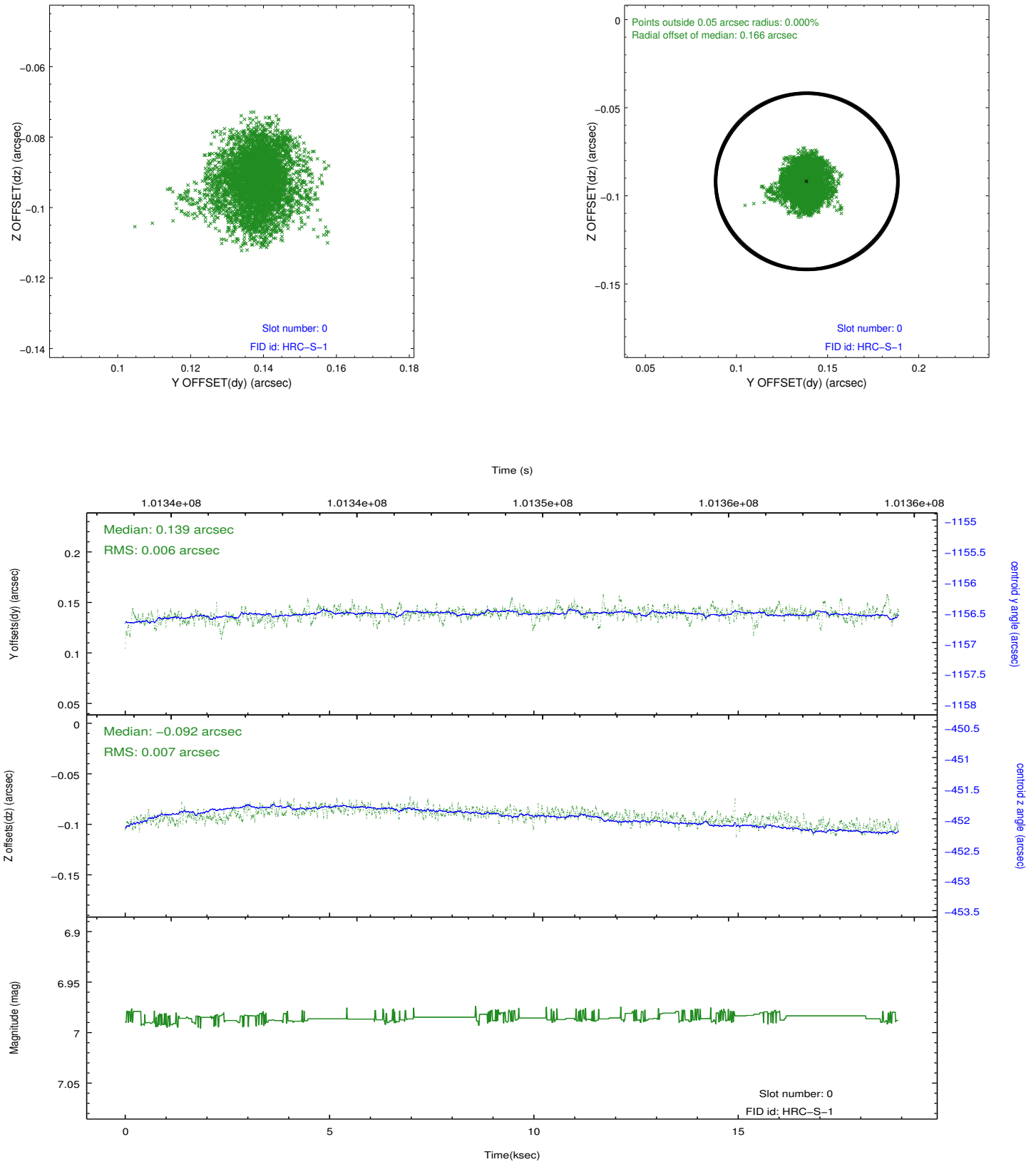


2.4.5 Slot 7

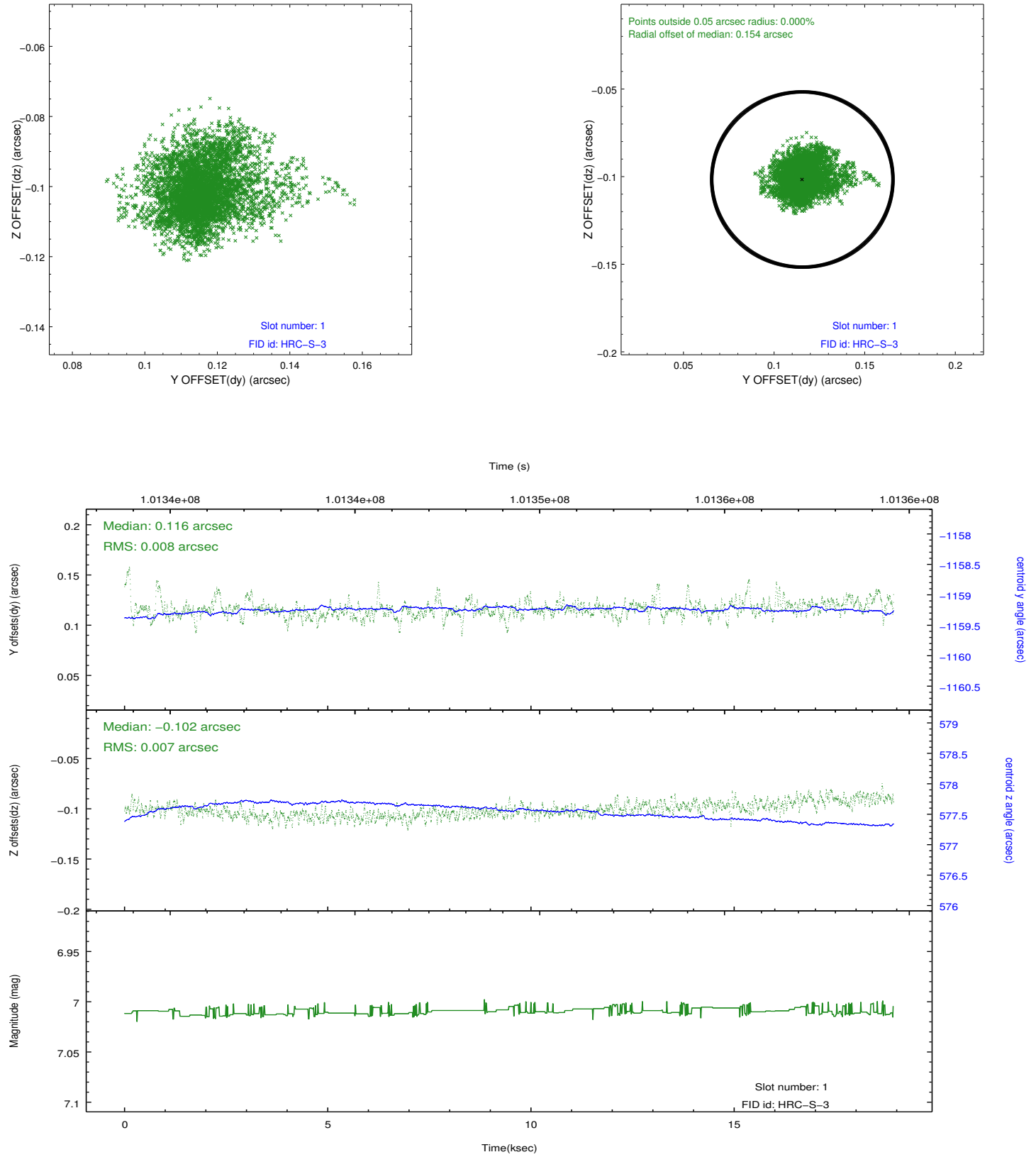


2.5 FID Slots

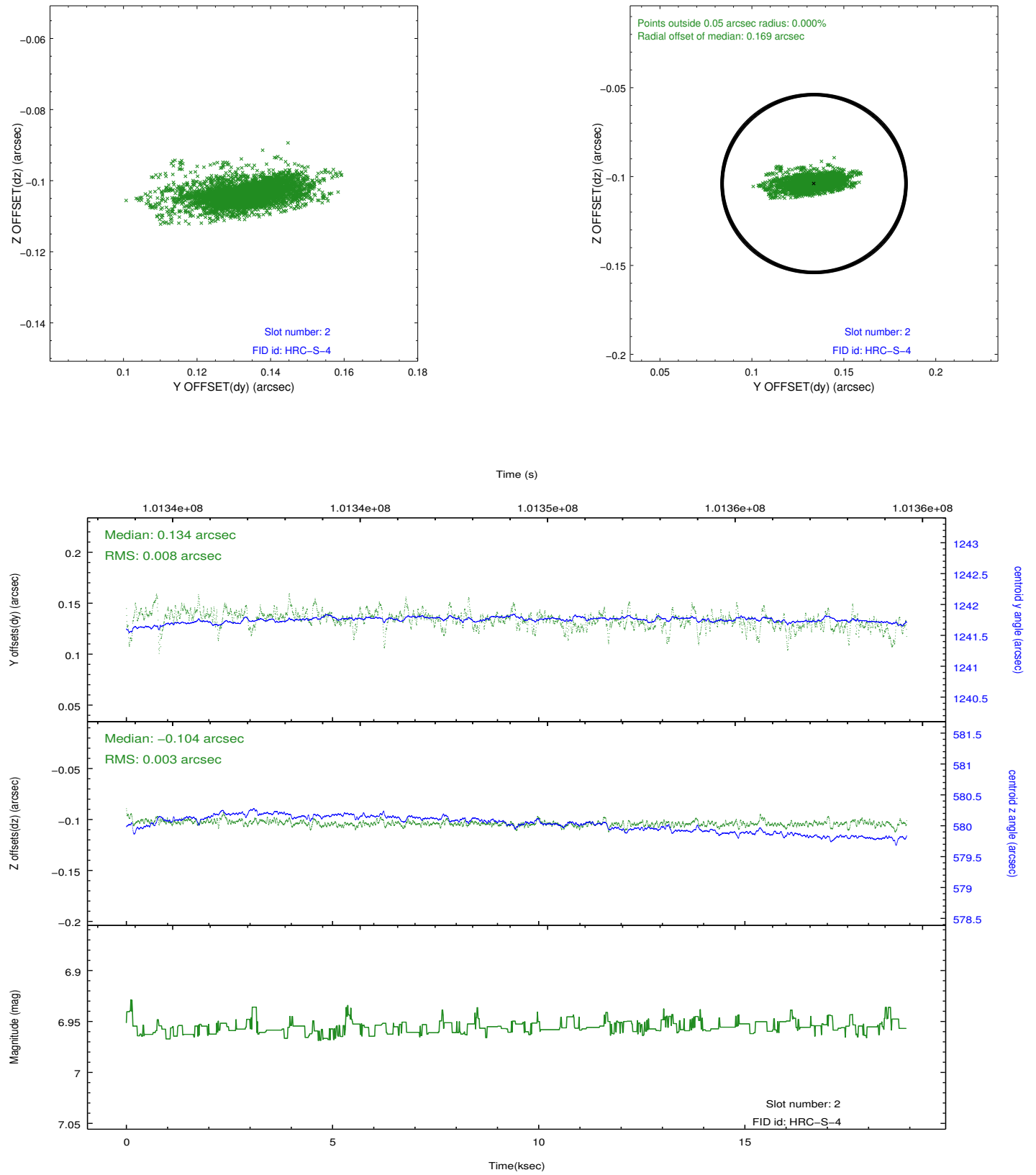
2.5.1 Slot 0



2.5.2 Slot 1

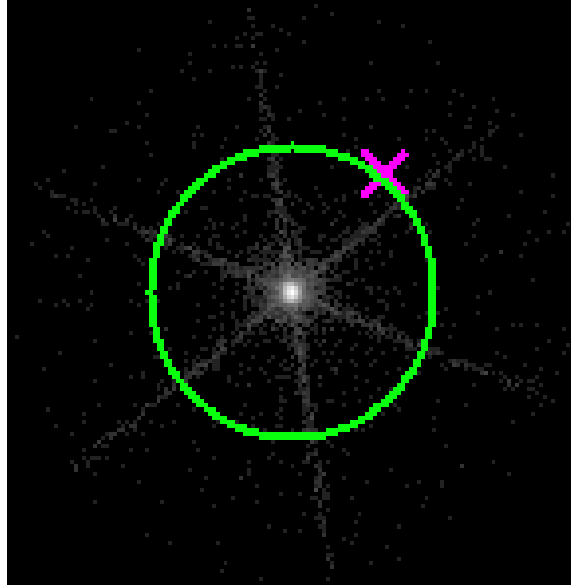


2.5.3 Slot 2

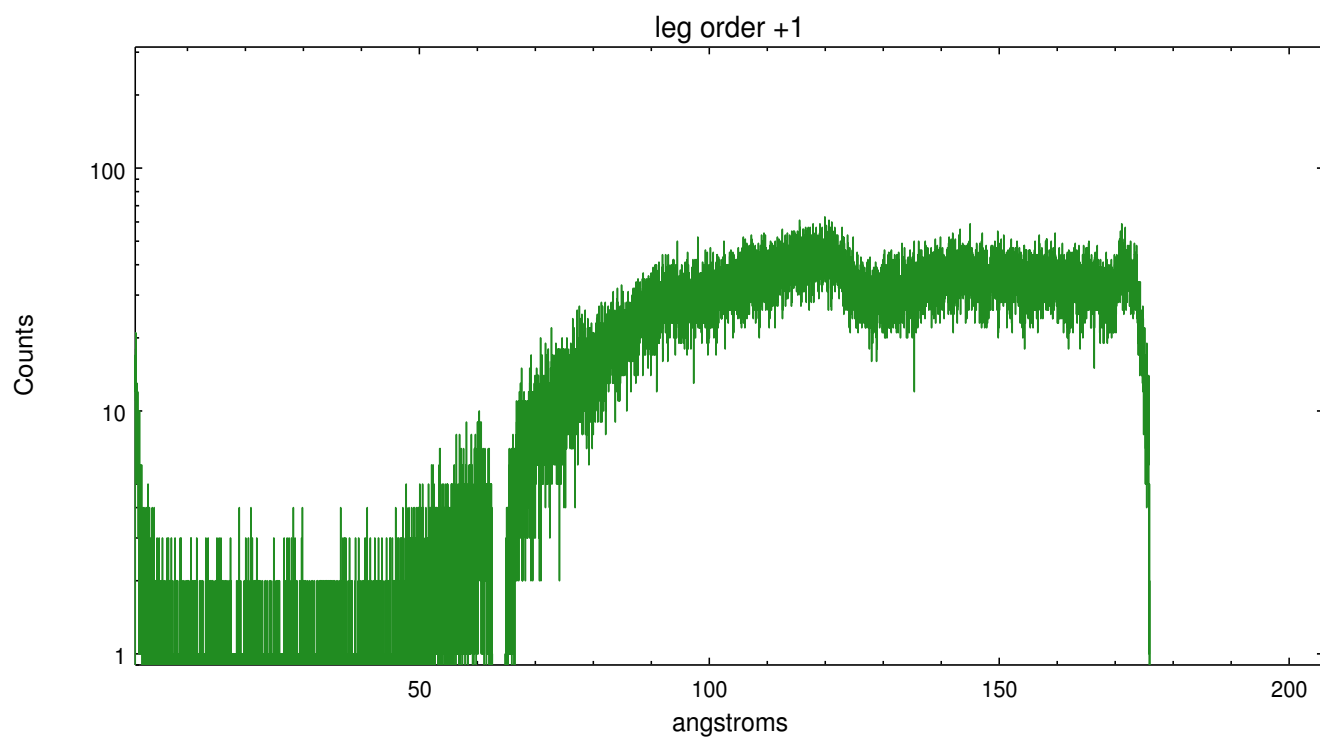
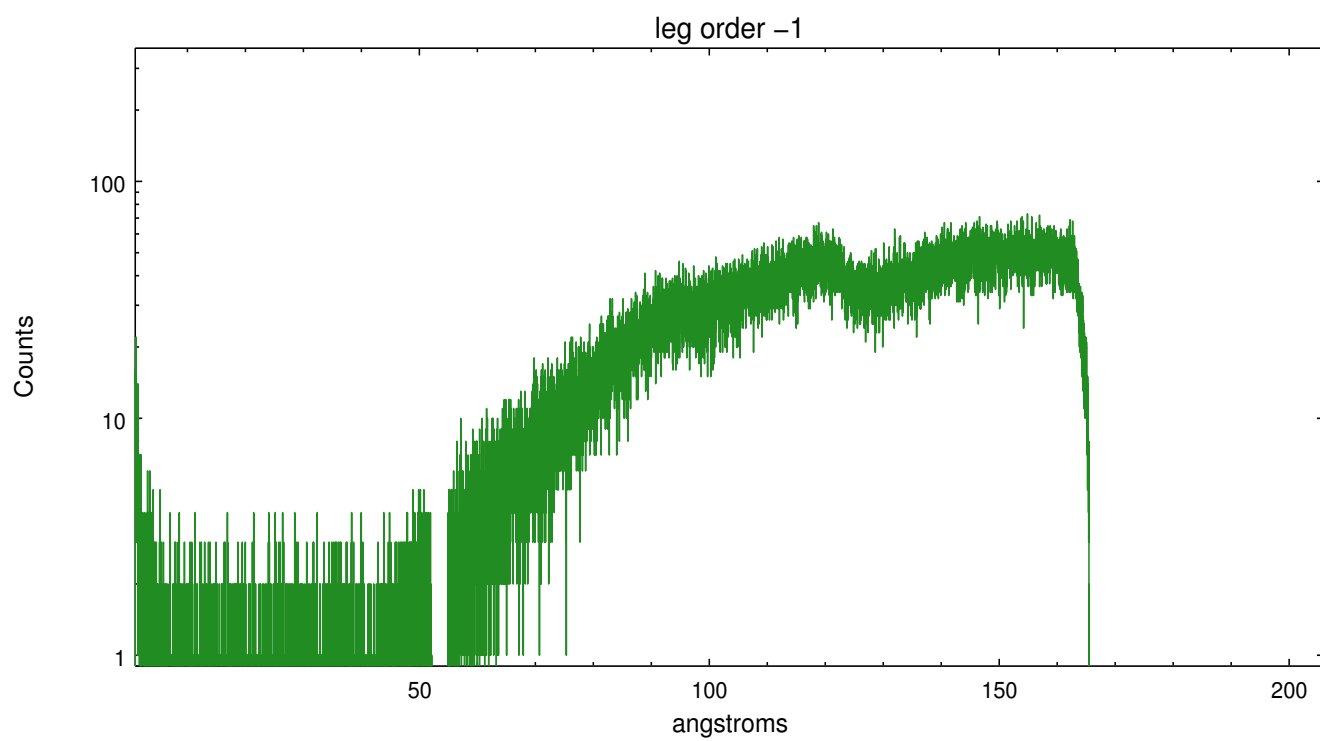


3 Gratings

3.1 LETG Arm



LETG Zero Order



A Summary

A.1 Status

V&V Scientist	Joy Nichols
V&V Date (YYYY-MM-DD)	2012.09.14
V&V Edition	1
V&V Disposition and Status	OK
V&V Charge Time	18.757

A.2 Comments