

V&V Reference Report

L2 ASCDS Version : 7.6.9

Observation 1011 - L2 Version 001
Chandra X-Ray Center

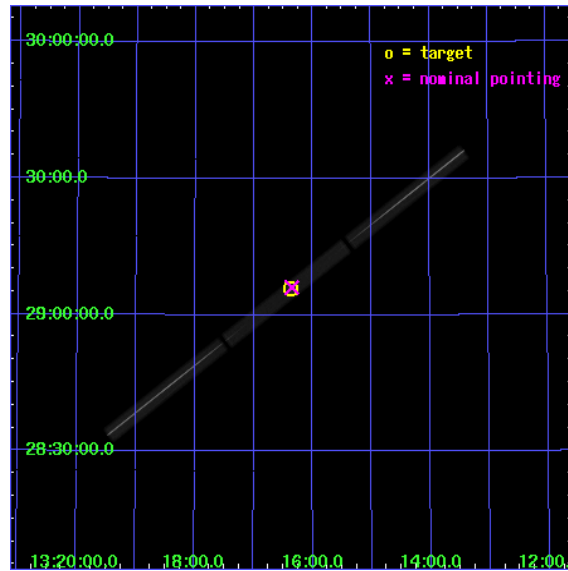
L2 Processing Date : Nov 15 2006

Contents

1	Front	2
2	OBI	3
2.1	OBI	3
2.1.1	Images	3
2.1.2	Parameters	4
2.1.3	Events	4
2.2	Compared Parameters	5
2.3	Aspect	6
2.4	Star Slots	9
2.4.1	Slot 3	9
2.4.2	Slot 4	10
2.4.3	Slot 5	11
2.4.4	Slot 6	12
2.4.5	Slot 7	13
2.5	FID Slots	14
2.5.1	Slot 0	14
2.5.2	Slot 1	15
2.5.3	Slot 2	16
3	Gratings	17
3.1	LETG Arm	17
A	Summary	19
A.1	Status	19
A.2	Comments	19

1 Front

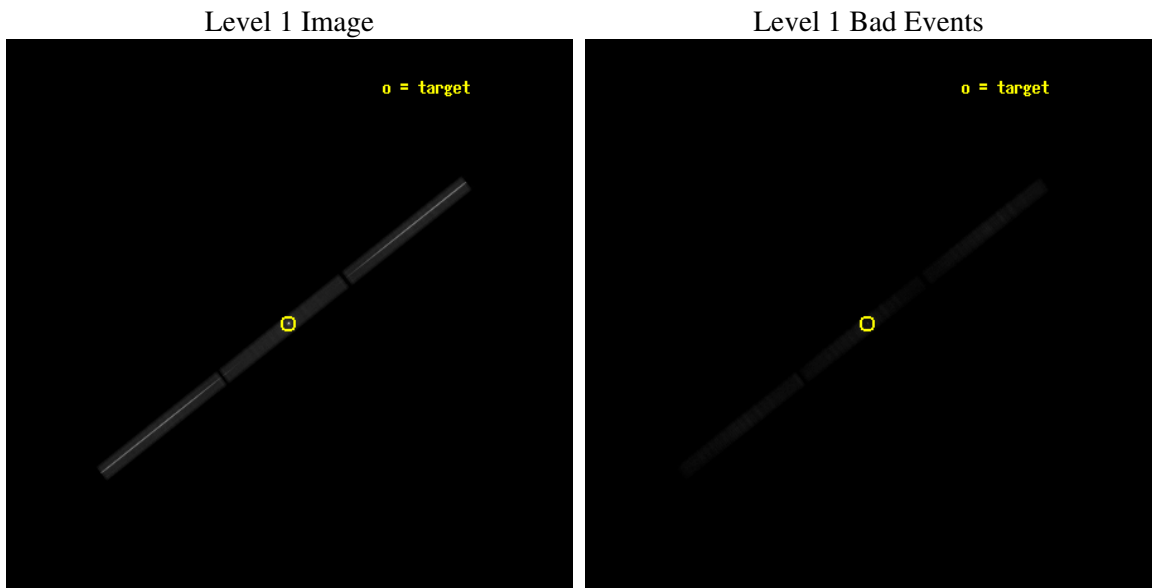
seq_num	390003
obs_id	1011
title	GRATINGS CALIBRATION OBSERVATIONS OF HZ43 AND CAPELLA
observer	Dr. CXC Calibration
object	HZ43
ra_targ	199.092083
dec_targ	29.099
ra_nom	199.08789577358
dec_nom	29.102086313911
roll_nom	141.75190293314
revision	3
ontime	18761.856975883
livetime	18600.902412096
l2events	1501543



2 OBI

2.1 OBI

2.1.1 Images



2.1.2 Parameters

obi_num	0
ascdsver	7.6.9
caldbver	3.2.4
date	2006-11-15T17:20:39
revision	3

sched_exp_time	18780.000000
ontime	18851.800729364
l1events	1982511

2.1.3 Events

Level 1 Events

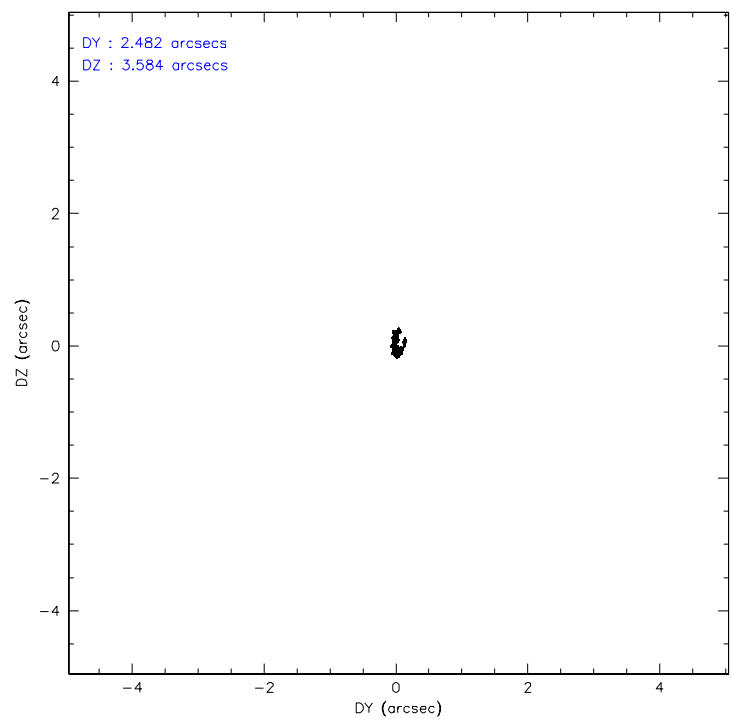
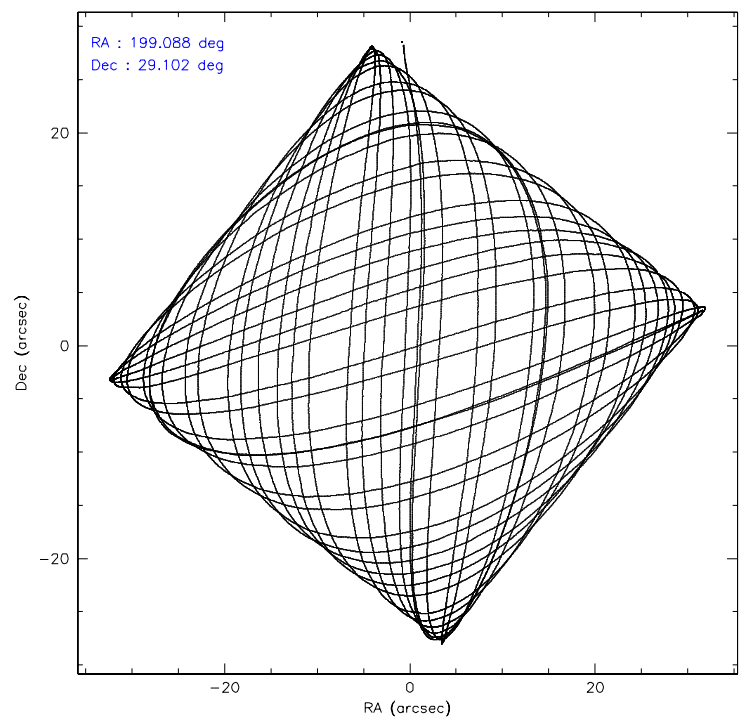
	segment 1	segment 2	segment 3
level 1 events	692507	586482	703522
rejected events	108324	114471	128422
rejected %	15%	19%	18%

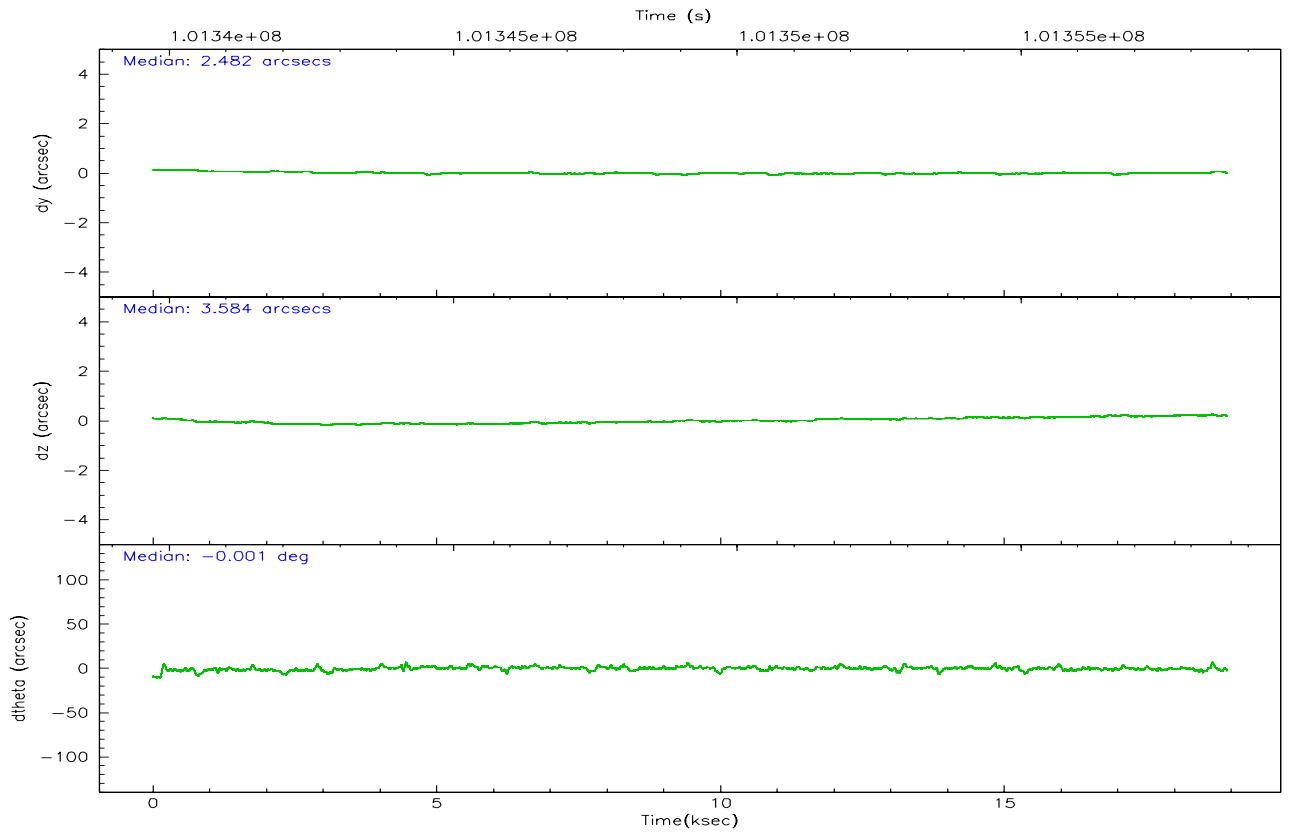
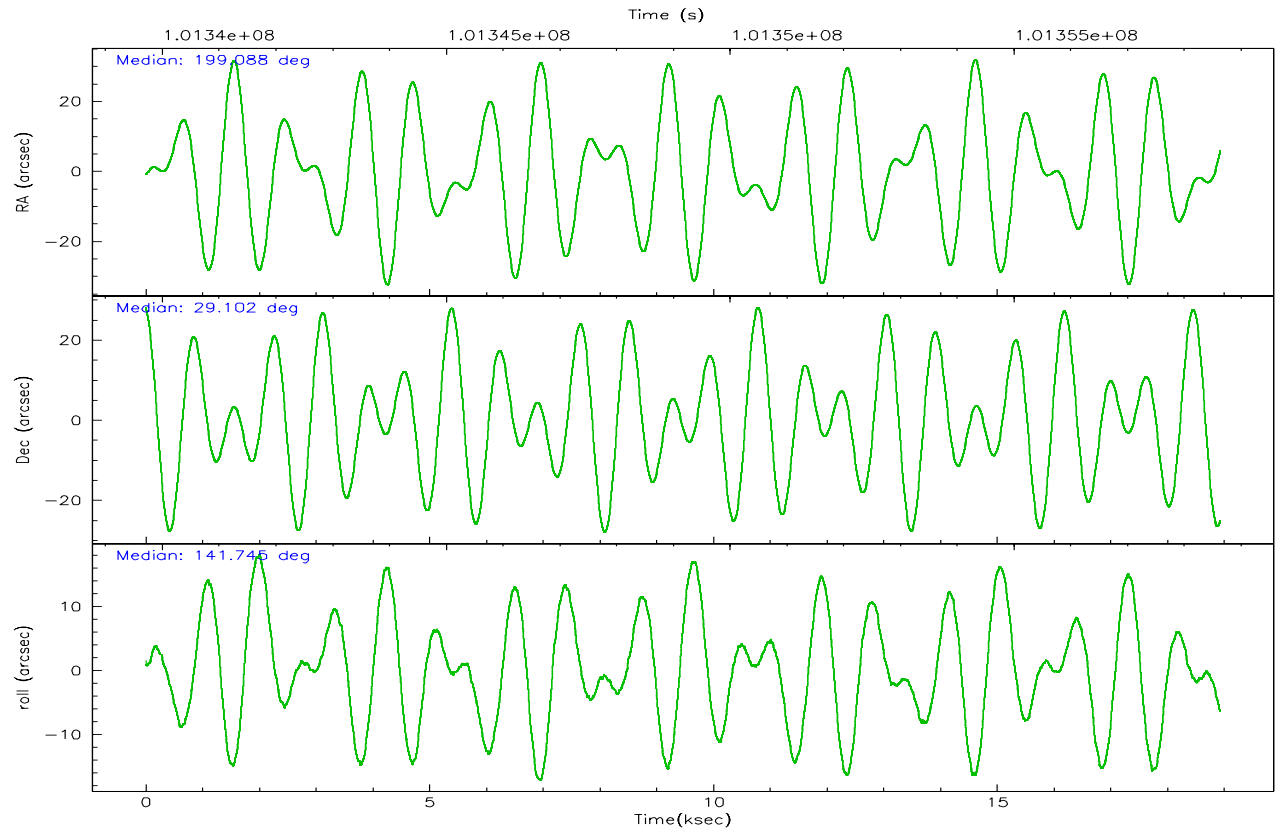
2.2 Compared Parameters

Parameter	Planned	Actual
Instrument	HRC	HRC
Detector	HRC-S	HRC-S
Grating	LETG	LETG
Data mode	OBSERVING	OBSERVING
Observation mode	POINTING	POINTING
Pointing RA	199.120561	199.0878957735835
Pointing Dec	29.099303	29.10208631391068
Pointing Roll	141.668675	141.7519029331356
Window start time	99792064.184000	99792064.184000
Window stop time	102384064.184000	102384064.184000
SIM focus pos (mm)	-1.429586	-1.428180813131781
SIM defocus (mm)	0.1037507710433287	0.1051558262725154
SIM translation stage pos (mm)	250.455976	250.466033080201
SIM translation stage offset (mm)	0	-0.01005468664627074
Observation start time	101339856.184000	101339428.83221
Observation start date	2001-03-18T21:56:32	2001-03-18T21:50:28
Observation end time	101358636.184000	101359238.49547
Observation end date	2001-03-19T03:09:32	2001-03-19T03:20:38

Parameter	Planned	Actual
Obspar format version number	6	6
Obspar file type	PREDICTED	ACTUAL
Obspar update status	NONE	UPDATED

2.3 Aspect



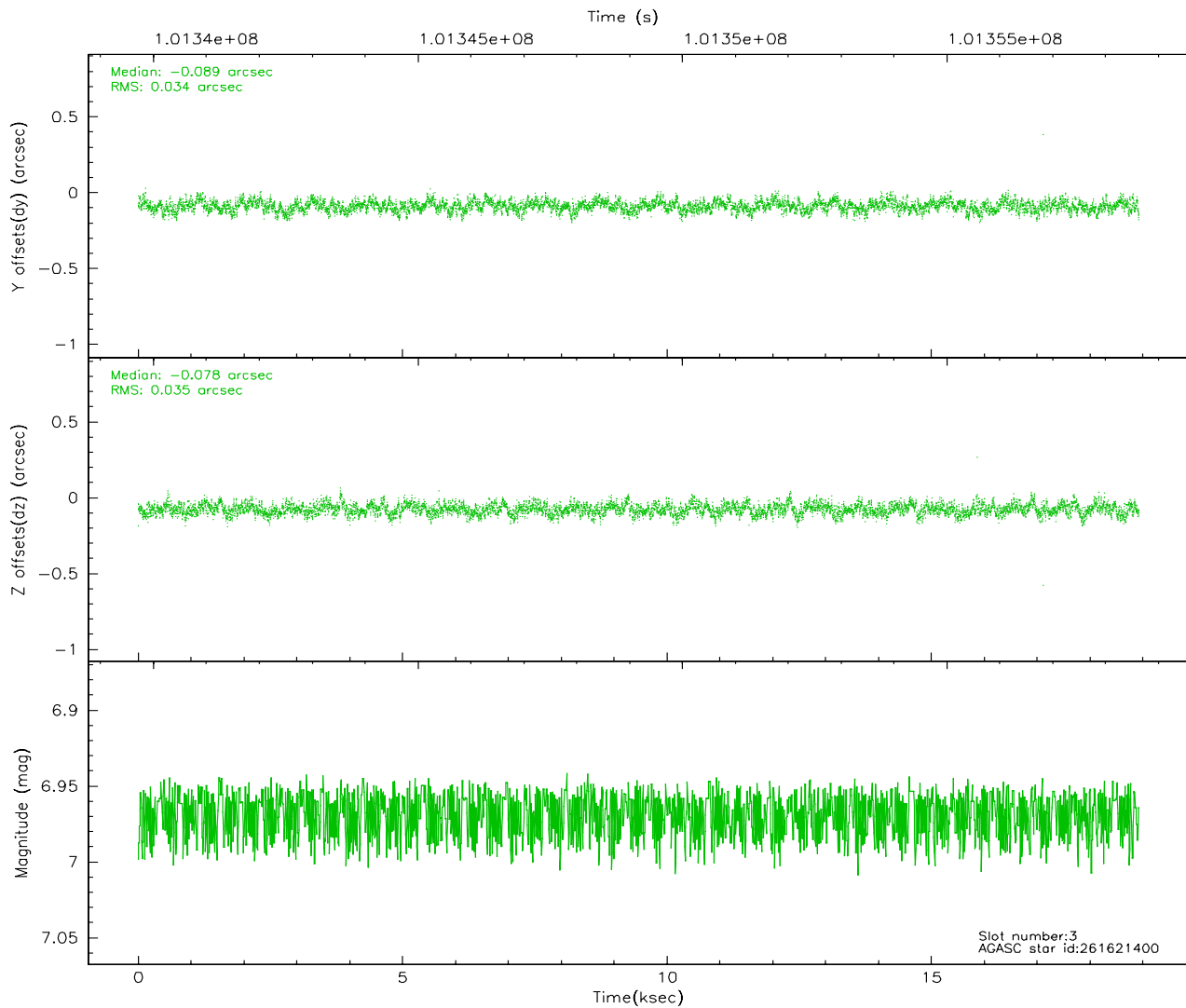
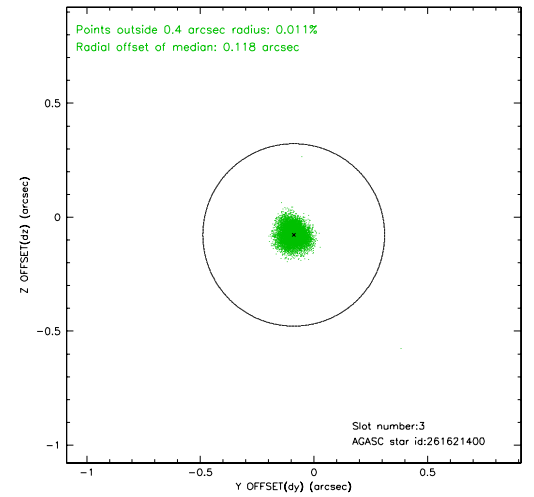
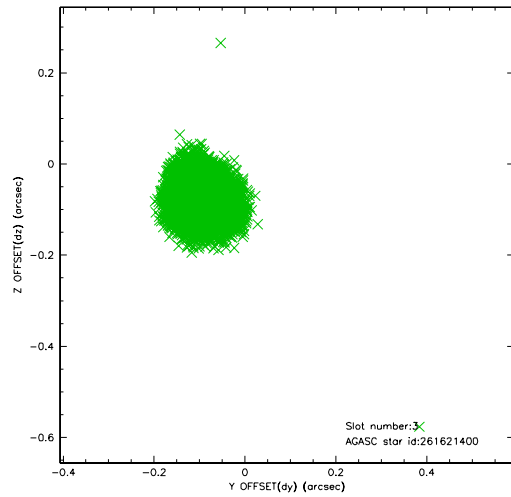


Slot Statistics

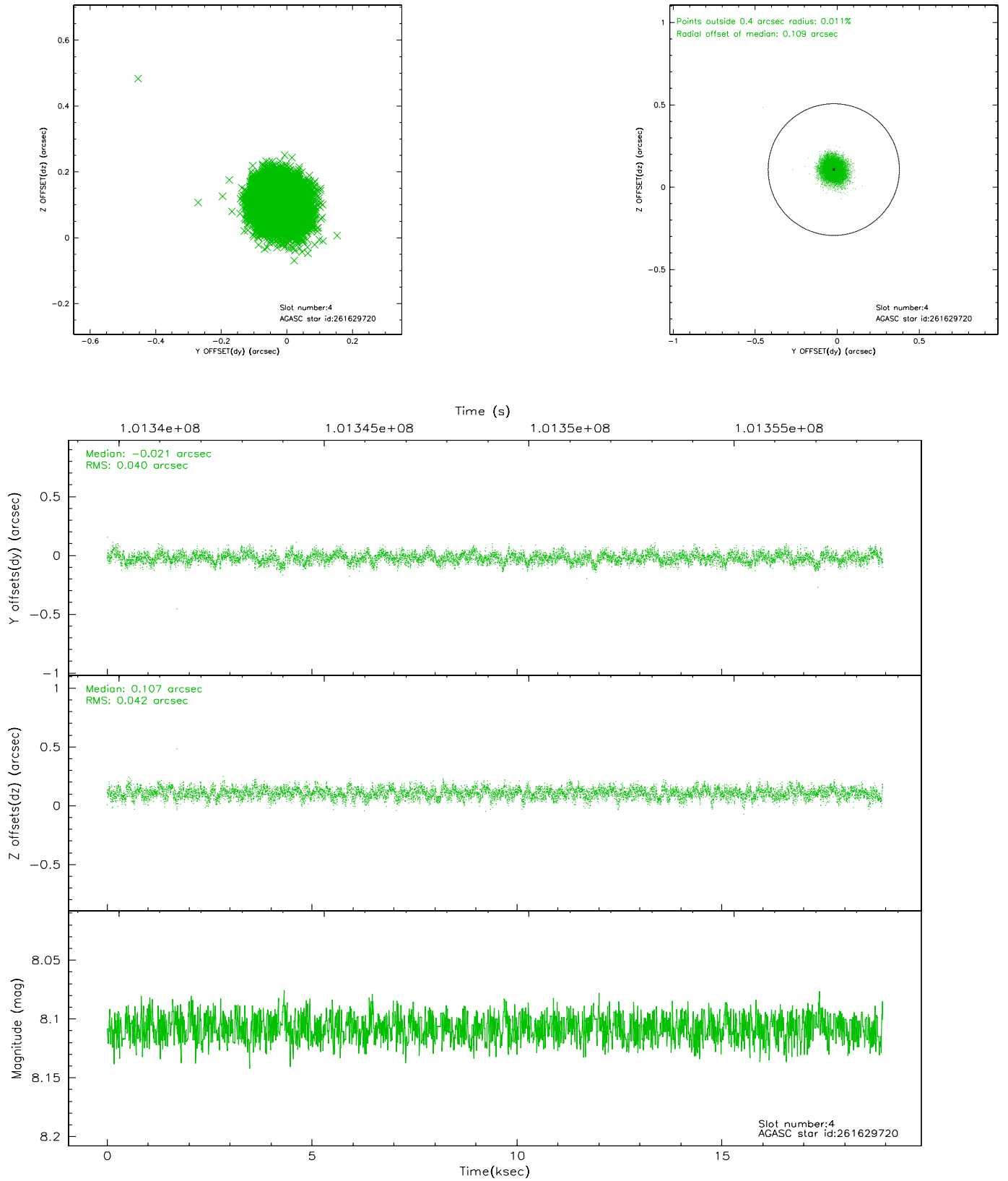
slot	status	id	mag	n_pts	med_dy	med_dz	dr1	dr2	ra	dec	mean_y	mean_z
0	FID	HRC-S-1	6.99	4616	0.139	-0.092	0.010	0.016	0.000000	0.000000	-1156.54	-451.98
1	FID	HRC-S-3	7.01	4616	0.116	-0.102	0.012	0.020	0.000000	0.000000	-1159.50	577.45
2	FID	HRC-S-4	6.96	4614	0.134	-0.104	0.008	0.017	0.000000	0.000000	1241.50	580.15
3	GUIDE	261621400	6.97	9232	-0.089	-0.078	0.052	0.084	198.901600	28.741982	-255.33	1436.97
4	GUIDE	261629720	8.11	9227	-0.021	0.107	0.062	0.099	199.236176	29.044452	-407.67	-70.87
5	GUIDE	261619776	8.81	9231	0.055	-0.157	0.064	0.107	198.654383	29.401174	1822.81	51.96
6	GUIDE	261623040	9.14	9229	-0.051	0.068	0.101	0.158	198.792686	29.757643	2275.12	-1224.57
7	GUIDE	261626376	9.70	9199	0.110	0.062	0.108	0.181	198.947288	29.347445	981.37	-363.96

2.4 Star Slots

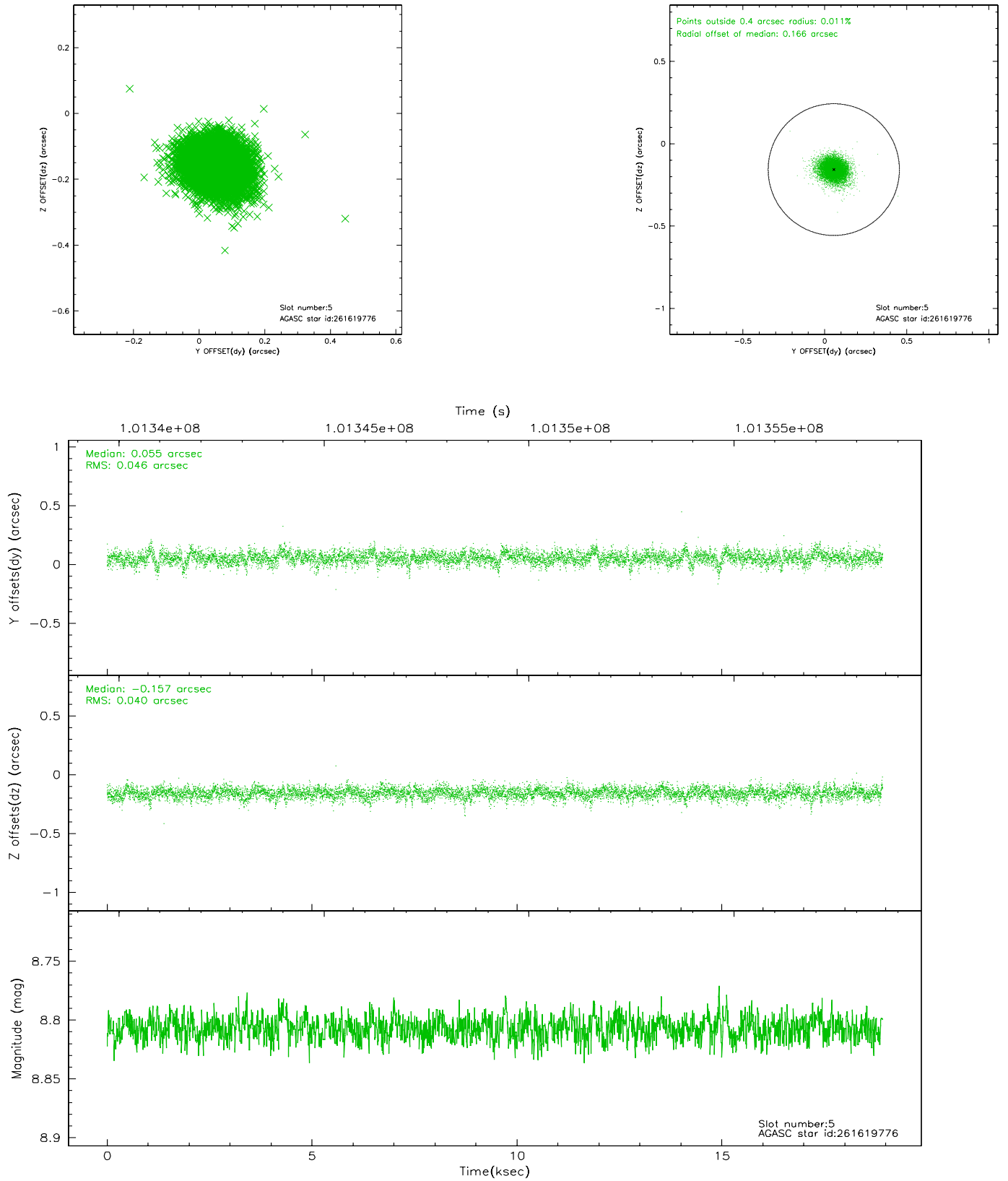
2.4.1 Slot 3



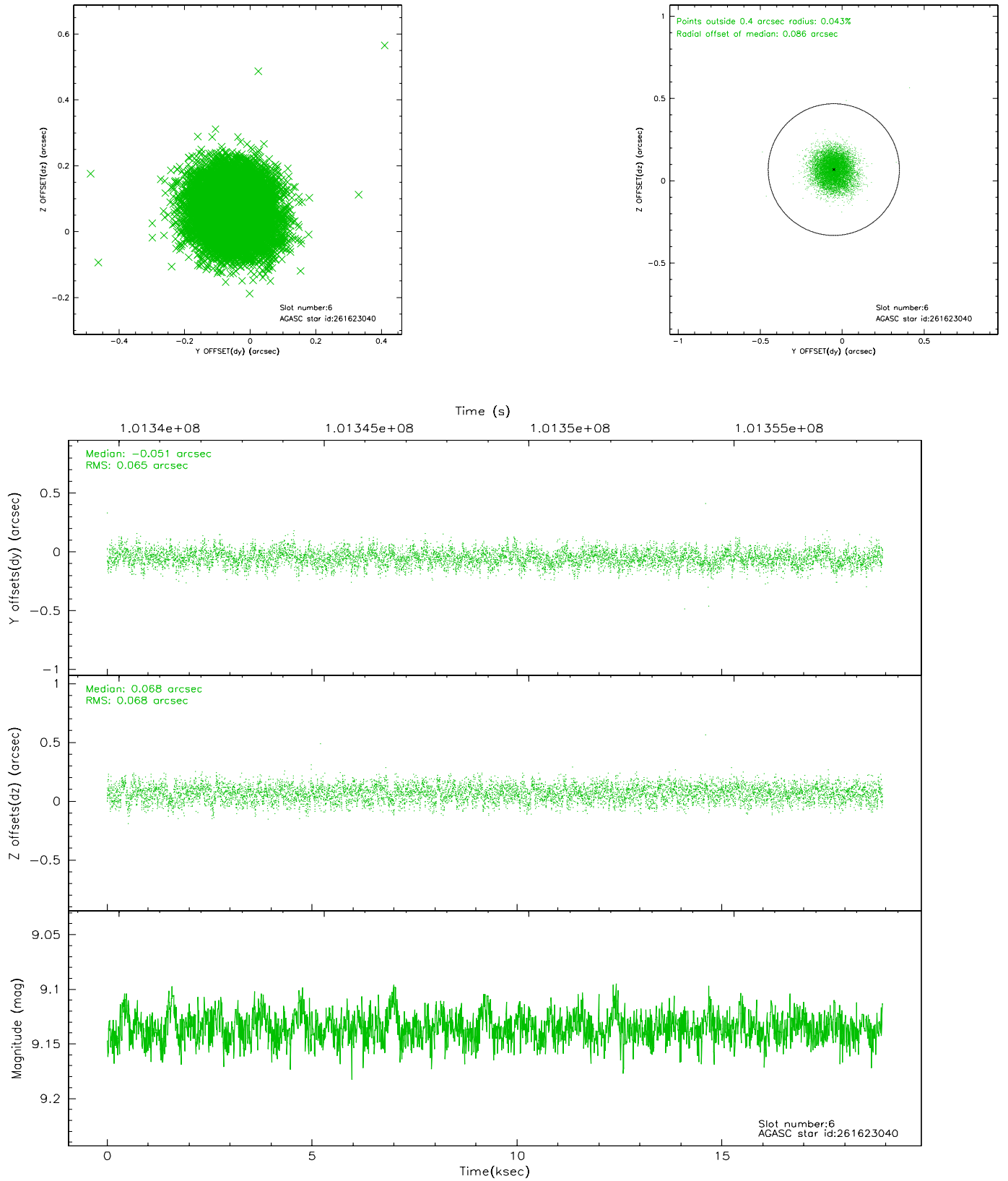
2.4.2 Slot 4



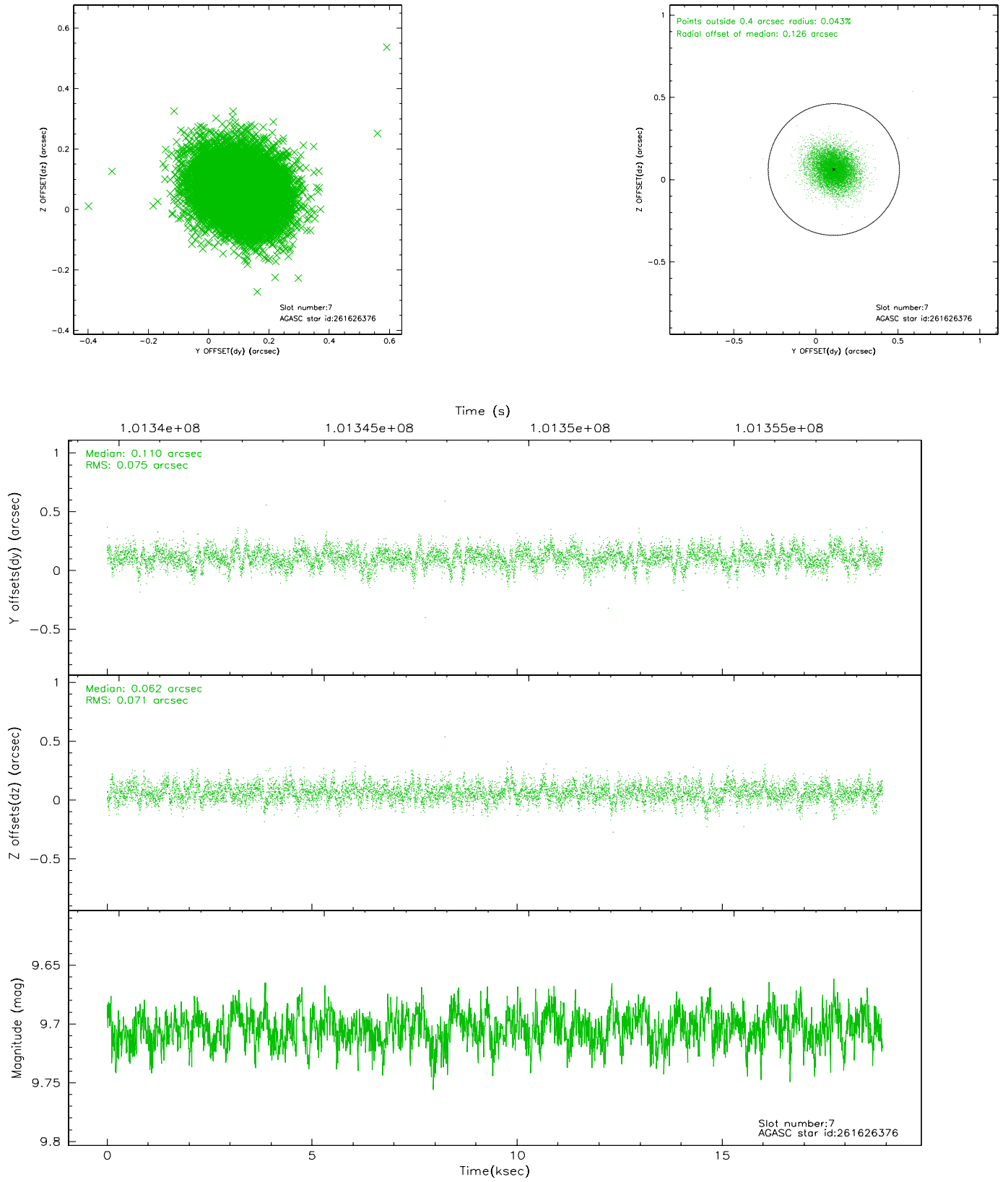
2.4.3 Slot 5



2.4.4 Slot 6

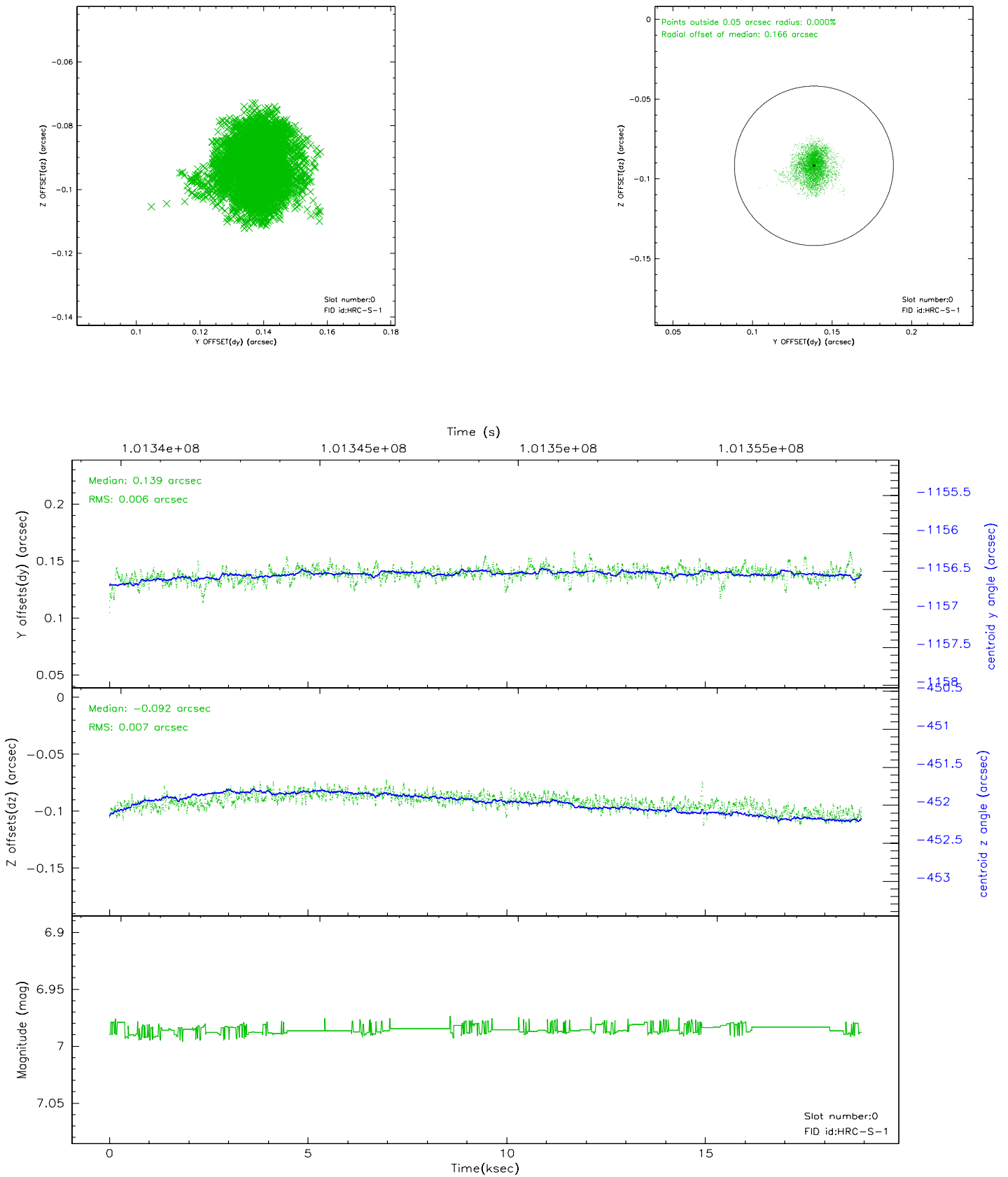


2.4.5 Slot 7

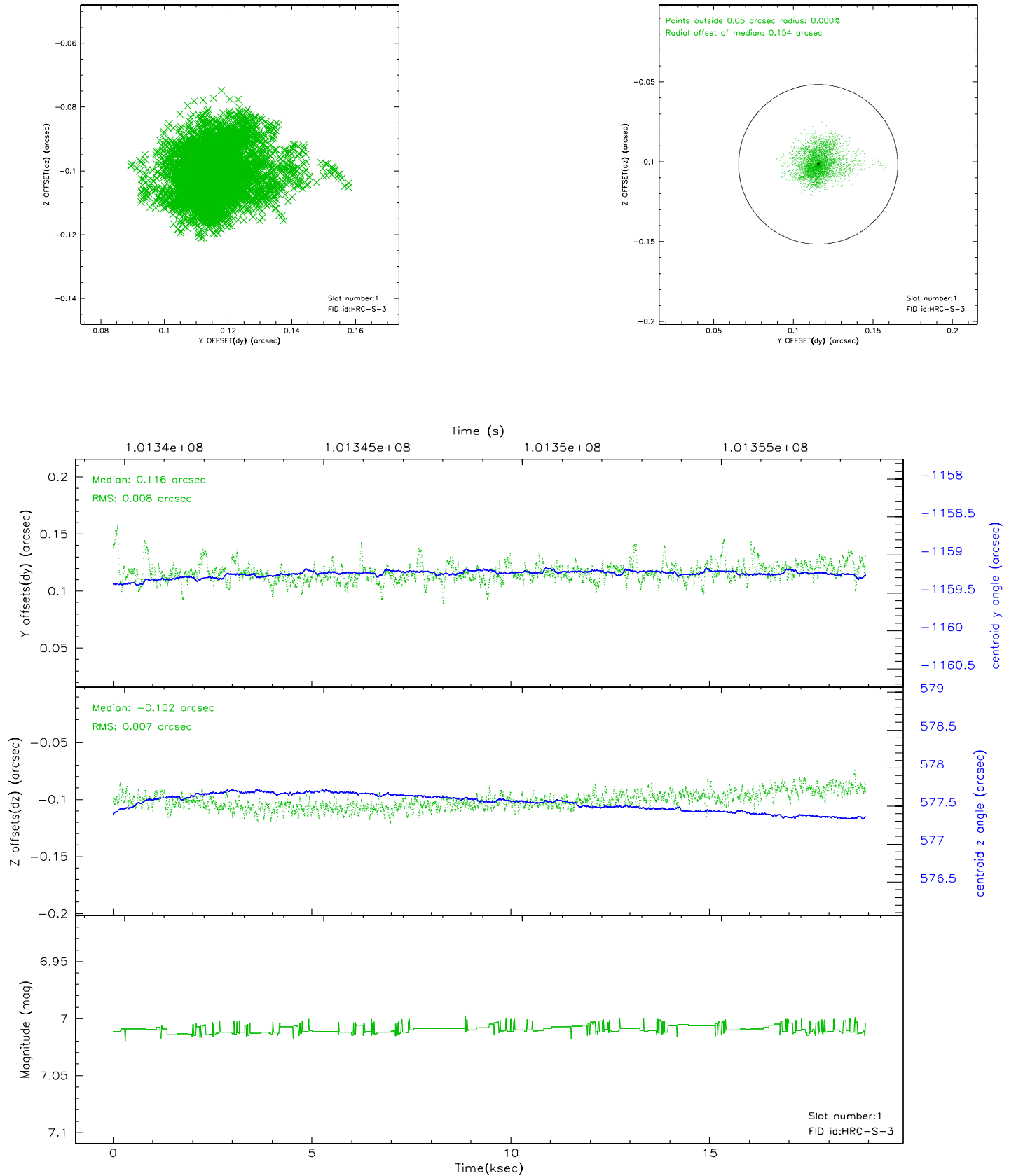


2.5 FID Slots

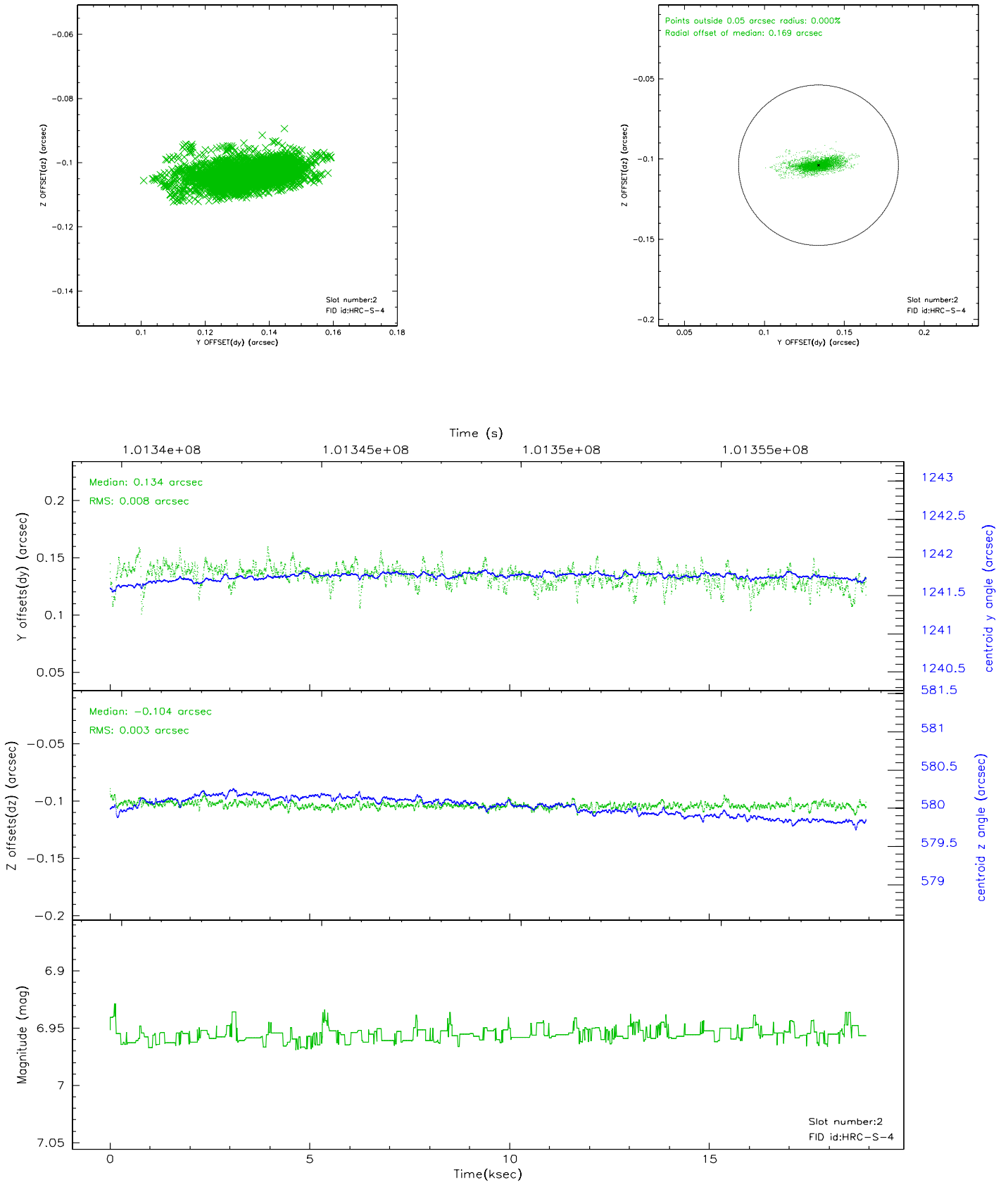
2.5.1 Slot 0



2.5.2 Slot 1

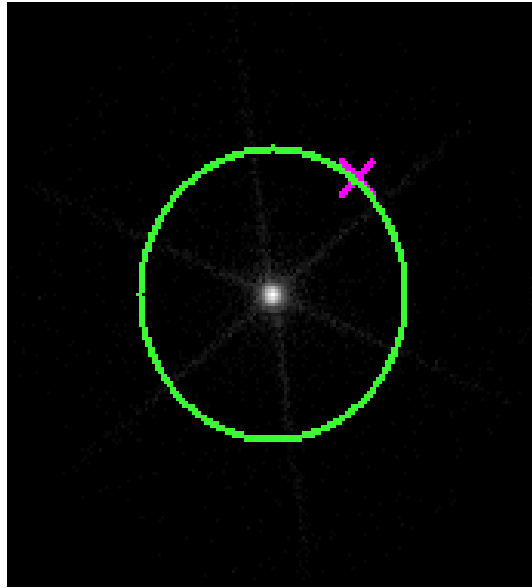


2.5.3 Slot 2



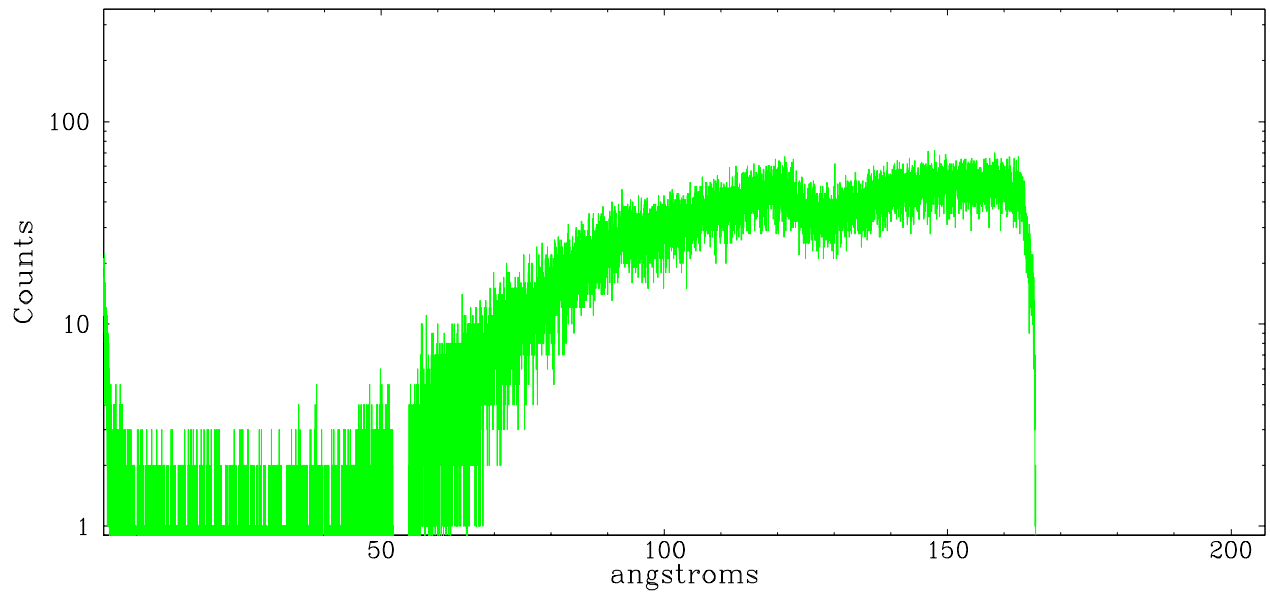
3 Gratings

3.1 LETG Arm

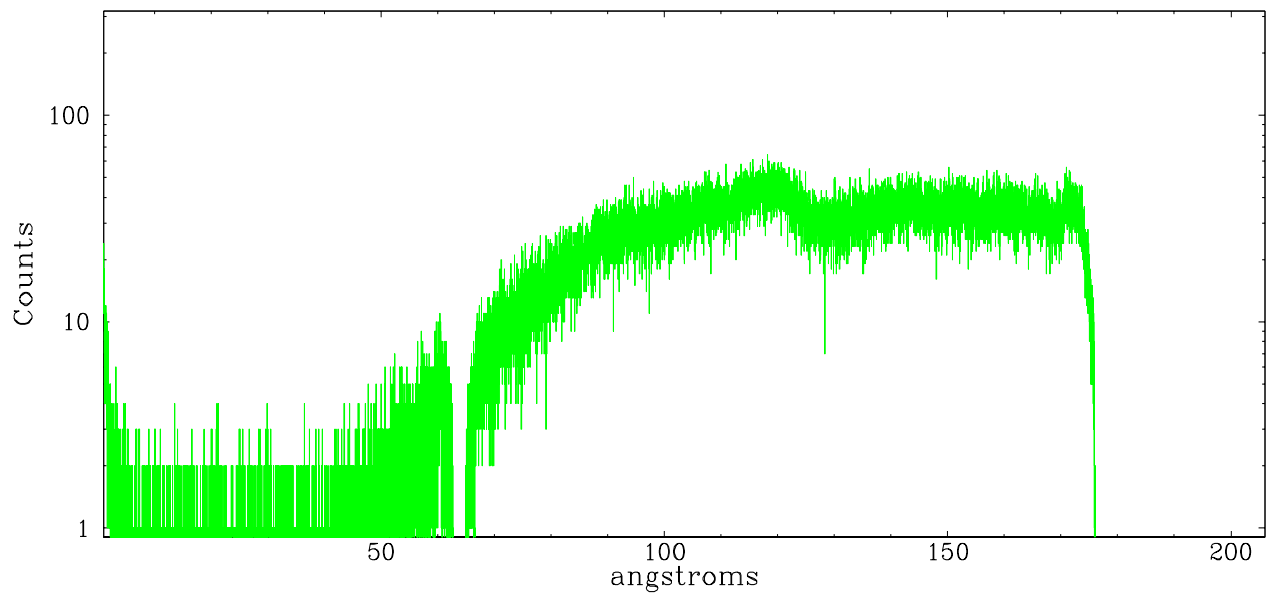


LETG Zero Order

leg order -1



leg order +1



A Summary

A.1 Status

V&V Scientist	Joy Nichols
V&V Date (YYYY-MM-DD)	2006.12.08
V&V Edition	1
V&V Disposition and Status	OK
V&V Charge Time	18.757

A.2 Comments