

V&V Reference Report

L2 ASCDS Version : 8.4.5

Observation 970 - L2 Version 4
Chandra X-Ray Center

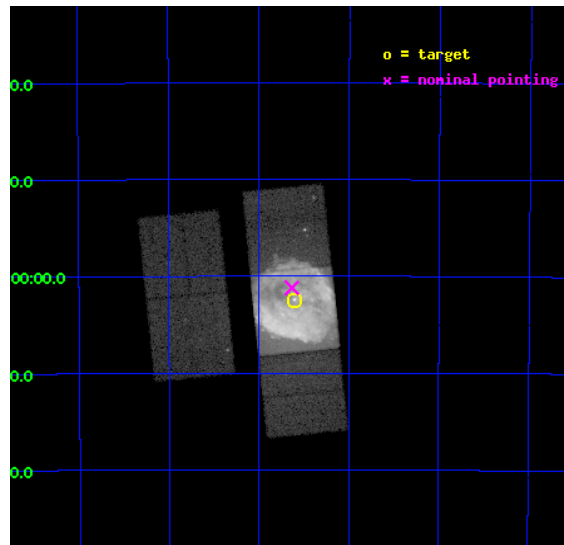
L2 Processing Date : Aug 23 2012

Contents

1	Front	2
2	OBI	3
2.1	OBI	3
2.1.1	Images	3
2.1.2	Bias	3
2.1.3	Parameters	4
2.1.4	Events	4
2.2	Compared Parameters	5
2.3	Aspect	6
2.4	Star Slots	9
2.4.1	Slot 3	9
2.4.2	Slot 4	10
2.4.3	Slot 5	11
2.4.4	Slot 6	12
2.4.5	Slot 7	13
2.5	FID Slots	14
2.5.1	Slot 0	14
2.5.2	Slot 1	15
2.5.3	Slot 2	16
A	Summary	17
A.1	Status	17
A.2	Comments	17

1 Front

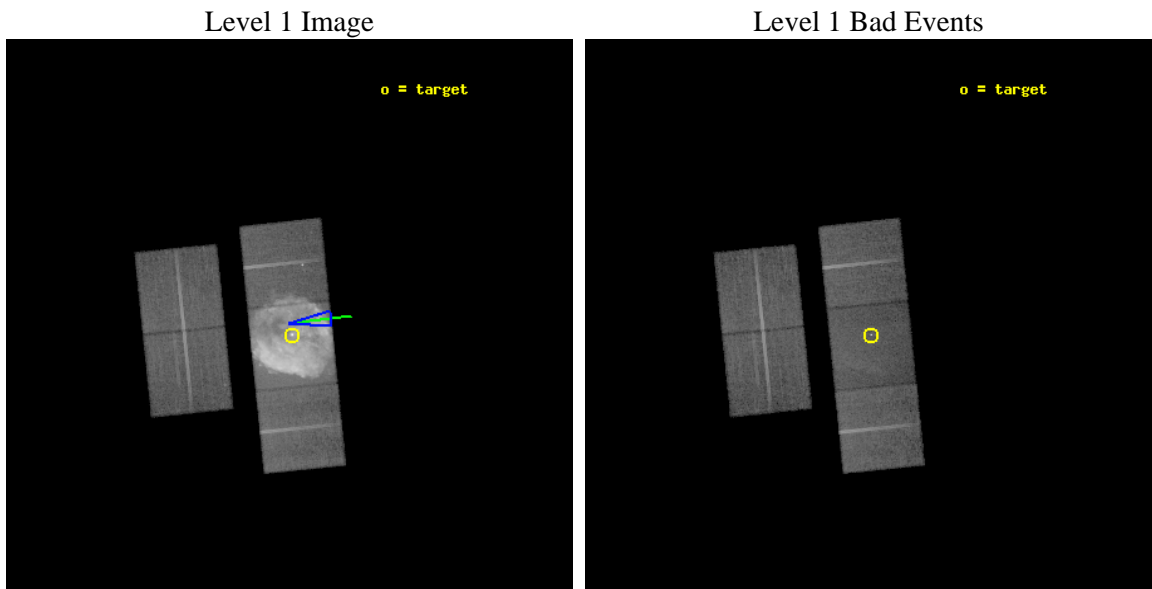
seq_num	500010	Sequence number
obs_id	970	Observation id
title	THE SUPERNOVA REMNANT AND NEUTRON STAR RCW 103	Proposal title
observer	Professor Gordon Garmire	Principal investigator
object	RCW 103	Source name
dtcycle	0	
cycle	P	events from which exps? Prim/Second/Both
ra_targ	244.402083	Observer's specified target RA [deg]
dec_targ	-51.04075	Observer's specified target Dec [deg]
ra_nom	244.40849549144	Nominal RA [deg]
dec_nom	-51.019984876318	Nominal Dec [deg]
roll_nom	84.161607854965	Nominal Roll [deg]
revision	4	Processing version of data
ontime	19168.000017852	Sum of GTIs [s]
livetime	18925.283260042	Livetime [s]
ontime2	19168.000017852	Sum of GTIs [s]
ontime3	19168.000017852	Sum of GTIs [s]
ontime6	19168.000017852	Sum of GTIs [s]
ontime7	19168.000017852	Sum of GTIs [s]
ontime8	19168.000017852	Sum of GTIs [s]
l2events	1403923	Number of level 2 events



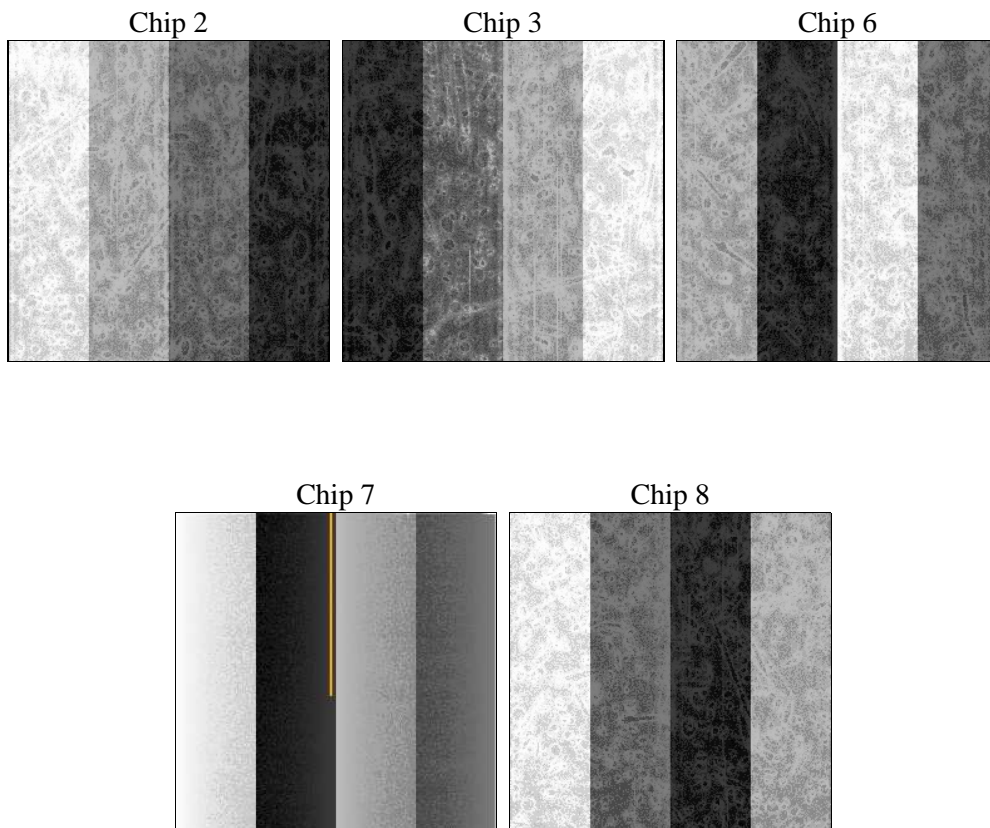
2 OBI

2.1 OBI

2.1.1 Images



2.1.2 Bias



2.1.3 Parameters

obi_num	0	Obi number	sched_exp_time	20000.000000	[s] Scheduled observation exposure time
ascdsver	8.4.5	Processing system revision	ontime	19168.000017852	Sum of GTIs [s]
caldsver	4.5.1.1	 	ontime2	19168.000017852	Sum of GTIs [s]
date	2012-08-23T19:44:37	Date and time of file creation	ontime3	19168.000017852	Sum of GTIs [s]
revision	4	Processing version of data	ontime6	19168.000017852	Sum of GTIs [s]
			ontime7	19168.000017852	Sum of GTIs [s]
			ontime8	19168.000017852	Sum of GTIs [s]
			l1events	2124498	Number of level 1 events

2.1.4 Events

	ccd 2	ccd 3	ccd 6	ccd 7	ccd 8
level 1 events	161366	151736	187237	1426236	197923
rejected events	142060	131852	136142	112481	153129
rejected %	88%	86%	72%	7%	77%

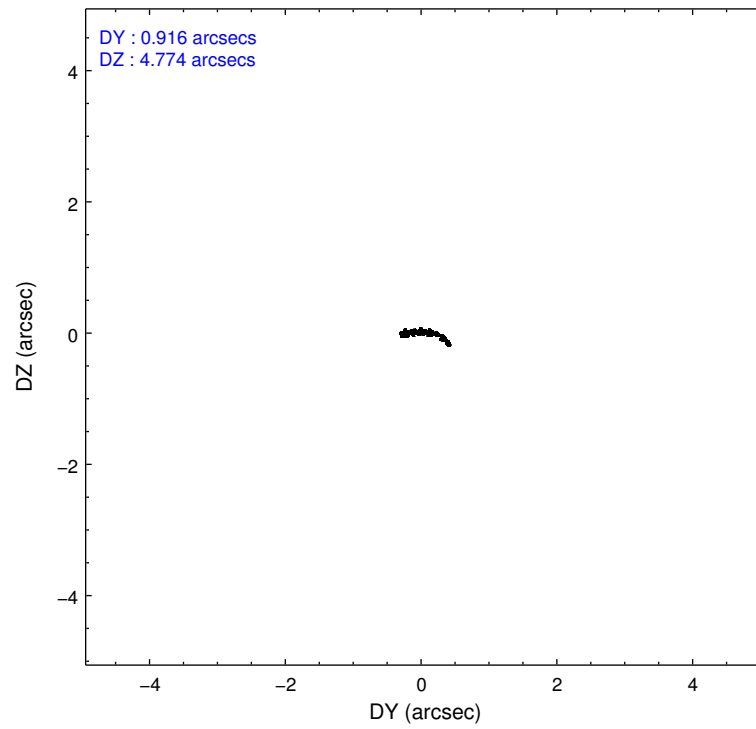
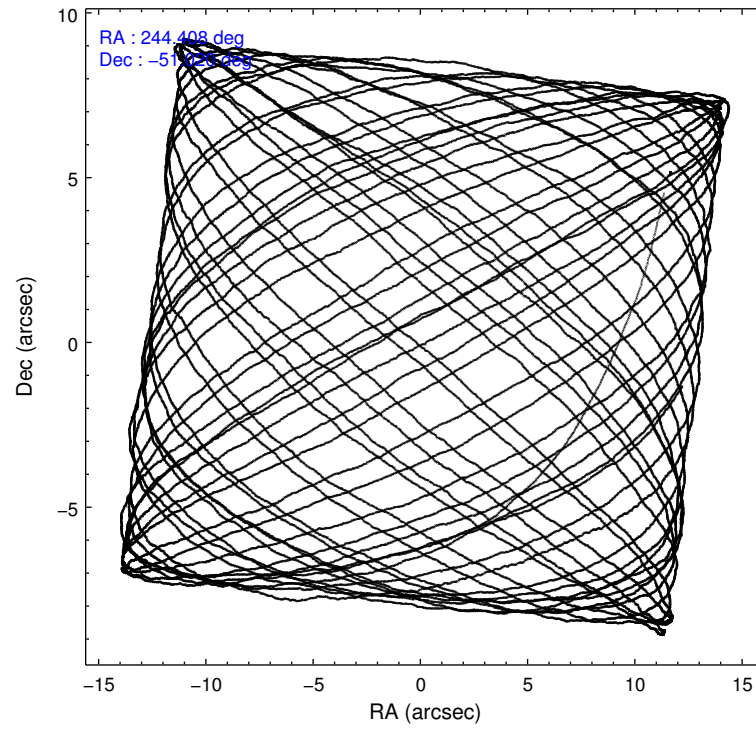
	ccd 2	ccd 3	ccd 6	ccd 7	ccd 8
grade 0 events	9768	10654	36924	402306	19508
	6%	7%	19%	28%	9%
grade 1 events	88	78	185	982	126
	0%	0%	0%	0%	0%
grade 2 events	3585	3255	5777	346870	8329
	2%	2%	3%	24%	4%
grade 3 events	1691	1642	2433	156687	3897
	1%	1%	1%	10%	1%
grade 4 events	1582	1681	2362	154612	3602
	0%	1%	1%	10%	1%
grade 5 events	4558	4818	5555	24971	6856
	2%	3%	2%	1%	3%
grade 6 events	2682	2656	3606	253484	9488
	1%	1%	1%	17%	4%
grade 7 events	137412	126952	130395	86324	146117
	85%	83%	69%	6%	73%

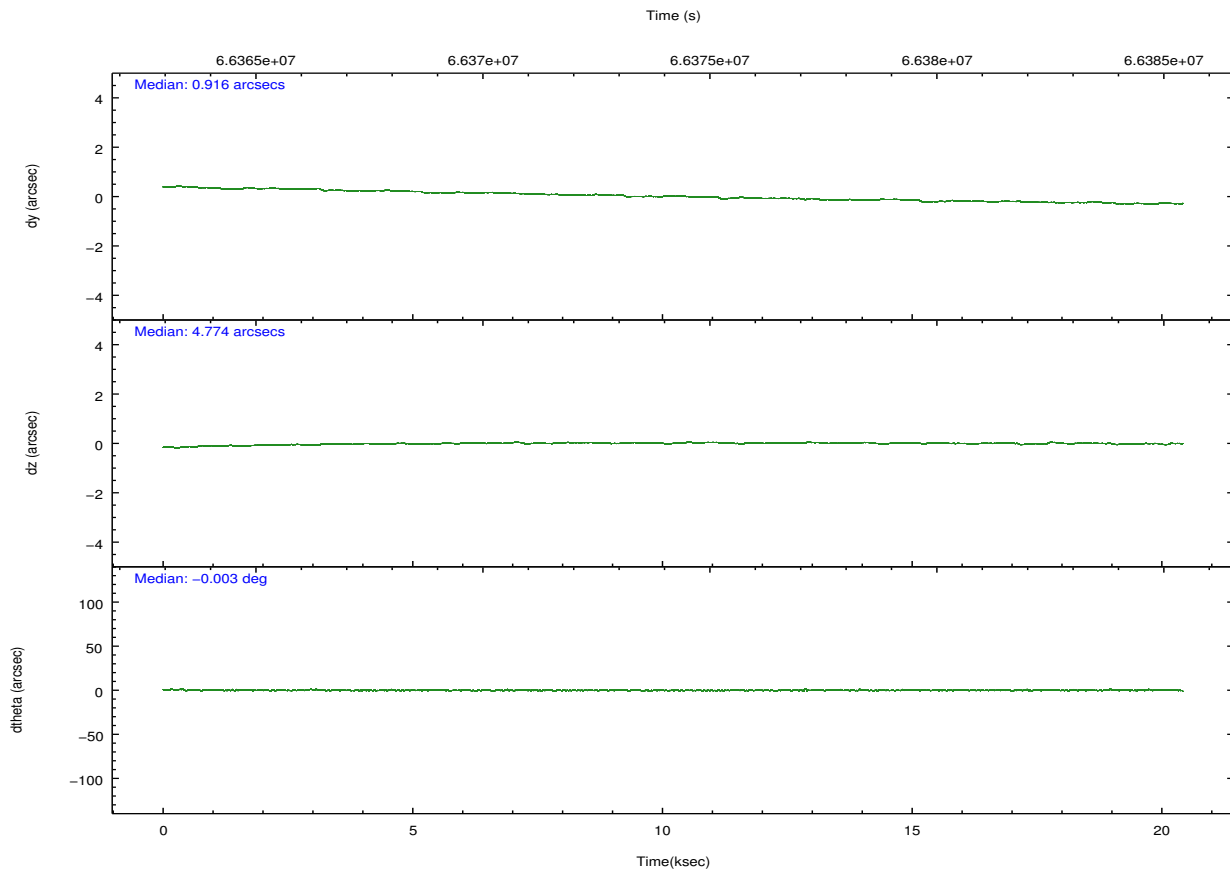
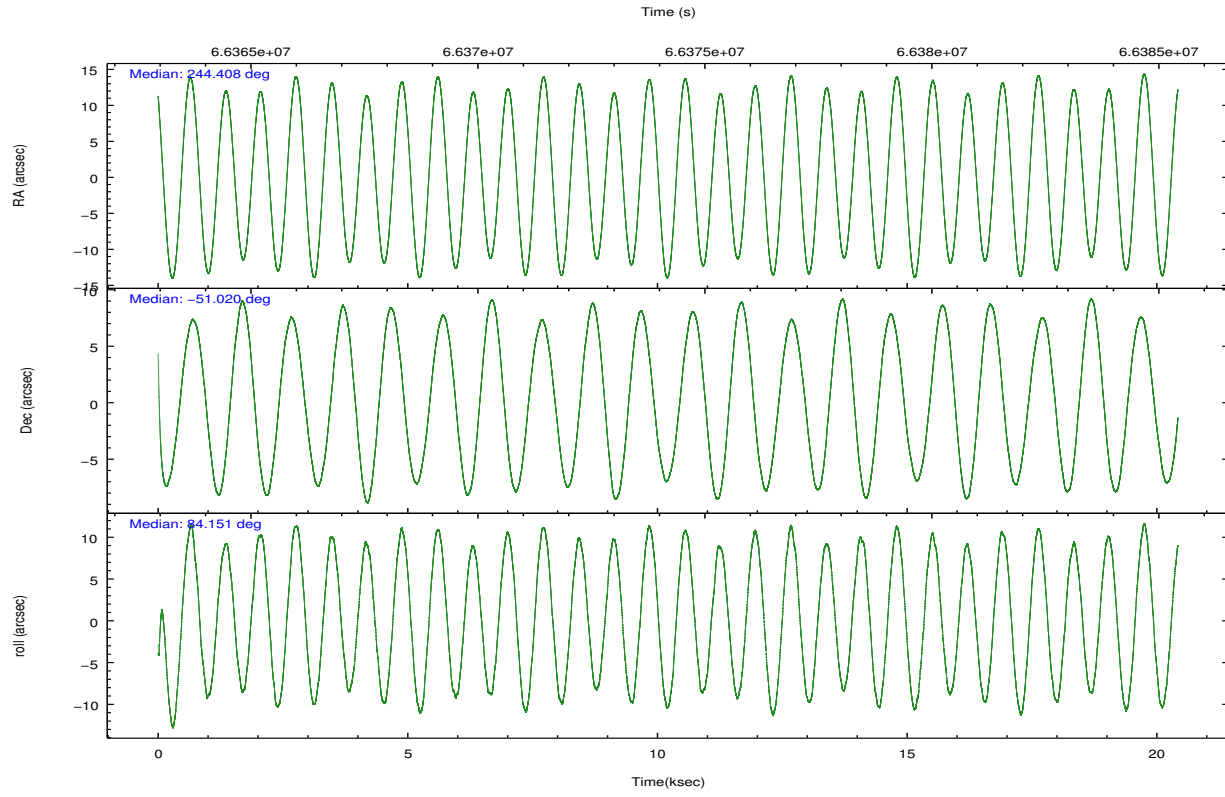
2.2 Compared Parameters

Parameter	Planned	Actual
Instrument	ACIS	ACIS
Detector	ACIS-23678	ACIS-23678
Grating	NONE	NONE
Data mode	FAINT	FAINT
Observation mode	POINTING	POINTING
[deg] Pointing RA	244.426415	244.4084954914352
[deg] Pointing Dec	-51.045039	-51.01998487631791
[deg] Pointing Roll	84.018920	84.16160785496484
[deg] Roll angle	84.000000	84.000000
[deg] Roll tolerance	10.000000	10.000000
Roll constraint allows 180D rotation	N	N
[mm] SIM focus pos	-0.684267	-0.6828225247311905
[mm] SIM defocus	0	0.001444936568705701
[mm] SIM translation stage pos	-190.132523	-190.1400660498719
[mm] SIM translation stage offset	0	0.00754346686406393
[s] Observation start time (MET)	66364399.184000	66362842.529978
Observation start date	2000-02-08T02:32:15	2000-02-08T02:07:22
[s] Observation end time (MET)	66384399.184000	66385163.955791
Observation end date	2000-02-08T08:05:35	2000-02-08T08:19:23
Read mode	TIMED	TIMED

Parameter	Planned	Actual
Obspar format version number	7	7
Obspar file type	PREDICTED	ACTUAL
Obspar update status	NONE	UPDATED
Number of optional ACIS chips dropped	0	0
On-chip summing requested	N	N
Subarray requested	NONE	NONE
Alternating exposures requested	N	N
[s] Primary exposure time	0.000000	3.2

2.3 Aspect



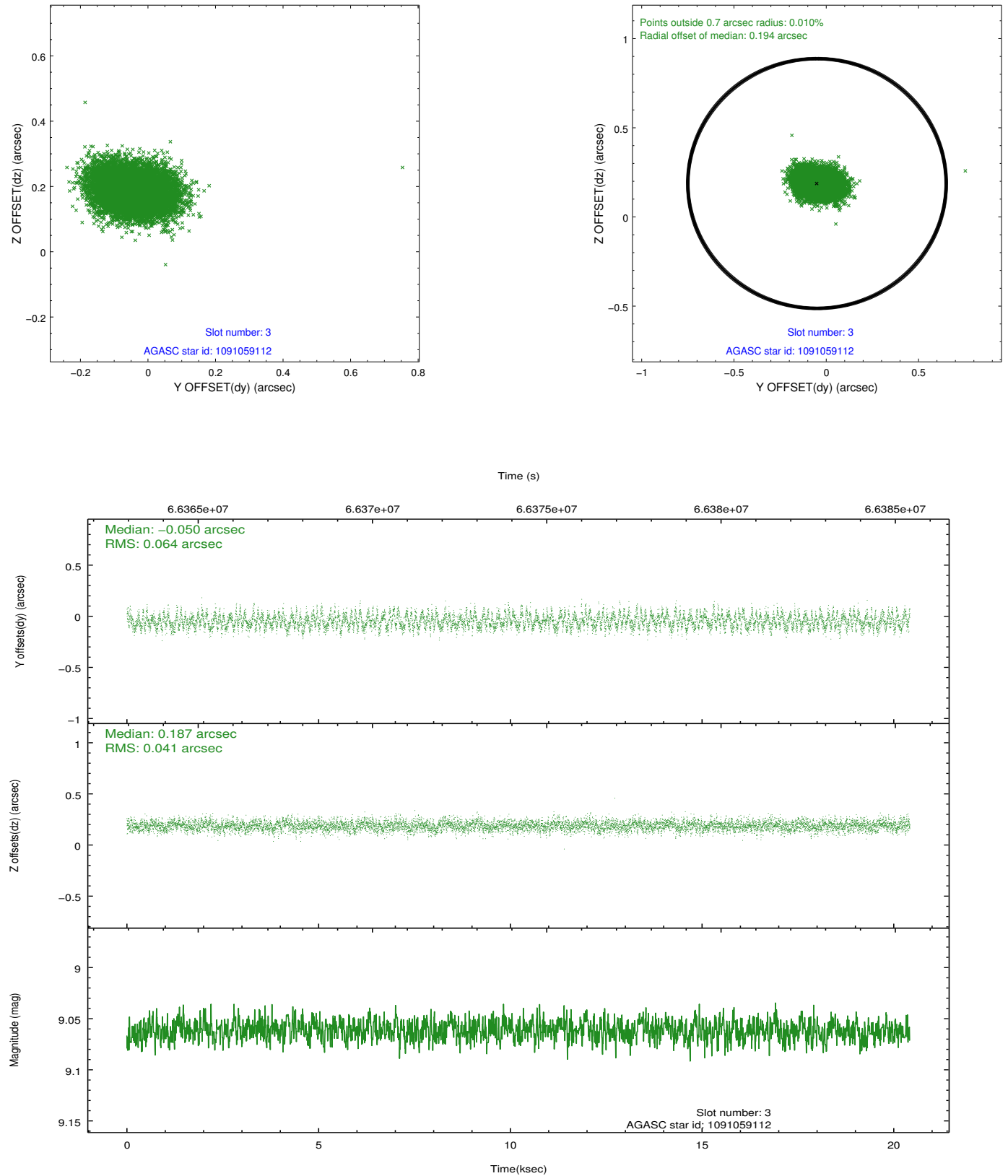


Slot Statistics

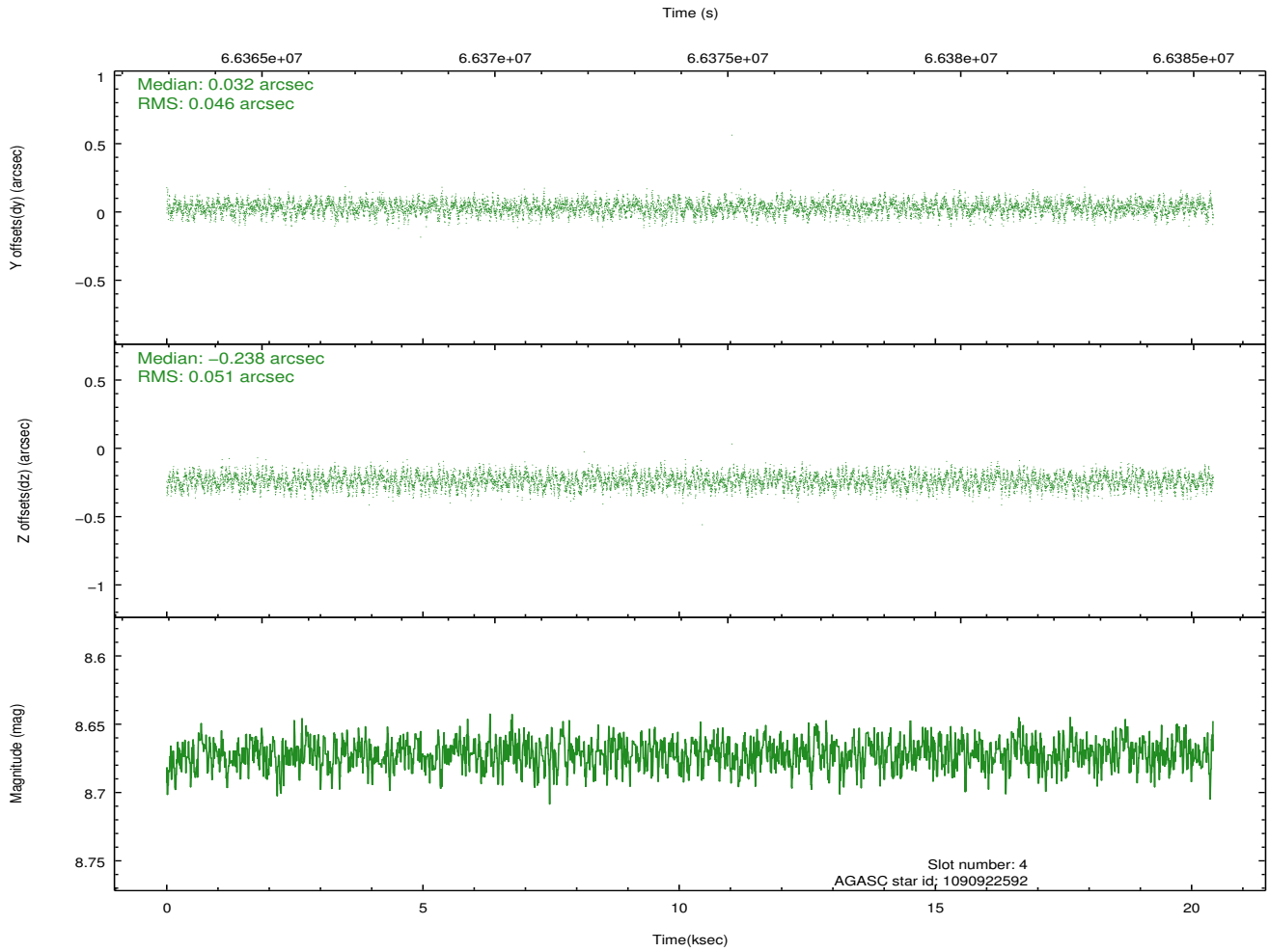
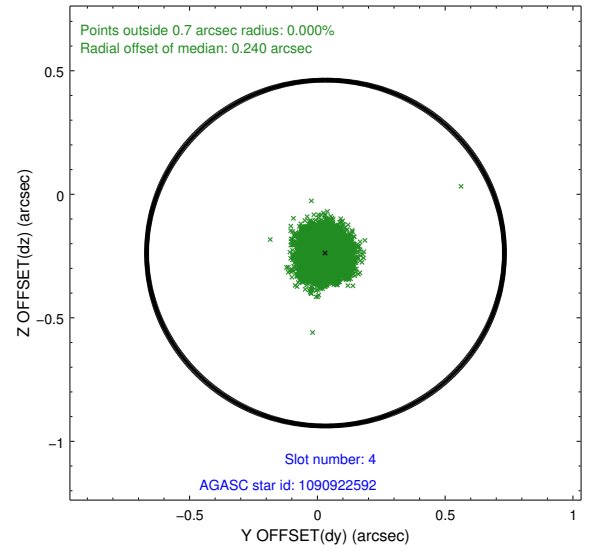
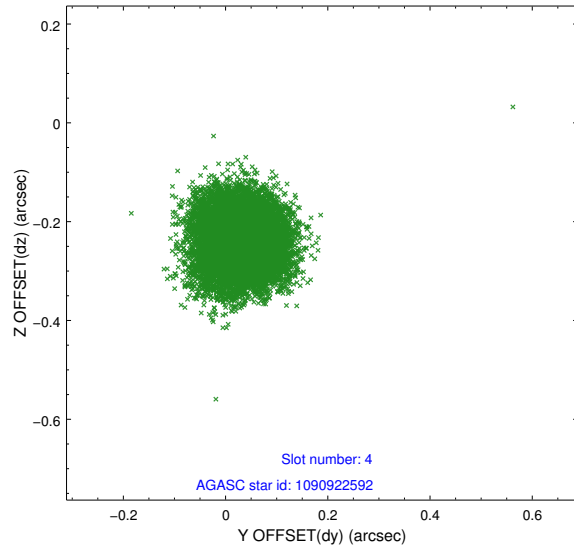
slot	status	id	mag	n_pts	med_dy	med_dz	dr1	dr2	ra	dec	mean_y	mean_z
0	FID	ACIS-S-3	7.36	4981	-0.017	0.010	0.008	0.013	0.000000	0.000000	59.64	-1854.92
1	FID	ACIS-S-4	7.21	4981	0.004	0.006	0.007	0.011	0.000000	0.000000	2159.85	182.39
2	FID	ACIS-S-5	7.24	4981	-0.015	-0.006	0.007	0.012	0.000000	0.000000	-1806.14	176.32
3	GUIDE	1091059112	9.06	9961	-0.050	0.187	0.081	0.131	245.180420	-50.736664	1274.96	-1594.13
4	GUIDE	1090922592	8.67	9953	0.032	-0.238	0.074	0.115	243.541382	-50.784876	709.64	2098.69
5	GUIDE	1091052648	9.15	9960	-0.011	0.186	0.070	0.114	245.027635	-50.830698	904.95	-1279.98
6	GUIDE	1090523048	9.31	9961	-0.016	0.152	0.094	0.156	245.527897	-50.473448	2291.67	-2297.84
7	GUIDE	1090926272	9.74	9958	0.044	-0.288	0.097	0.156	243.578476	-50.690586	1056.78	2054.03

2.4 Star Slots

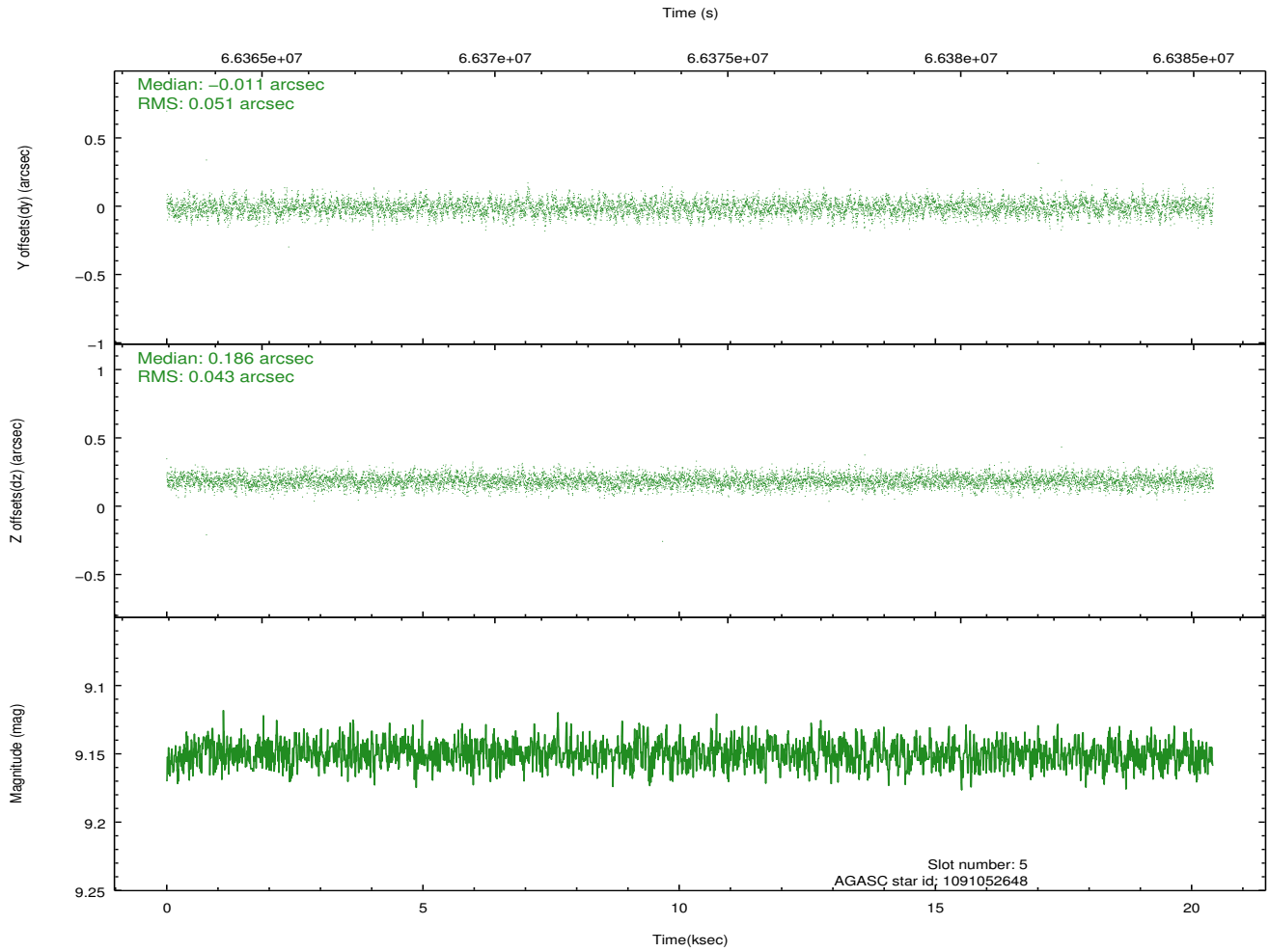
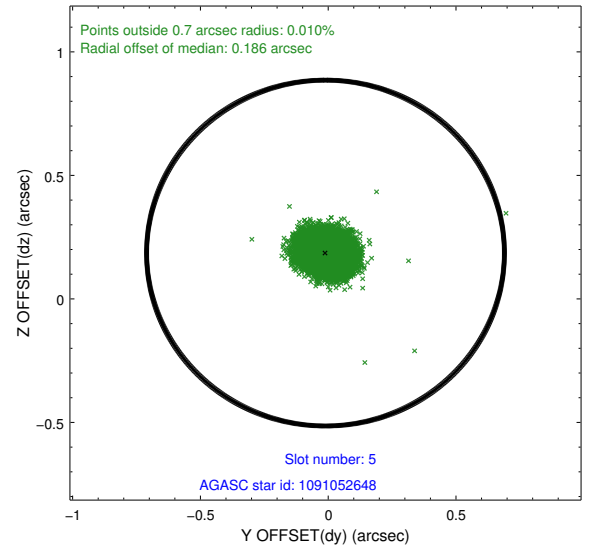
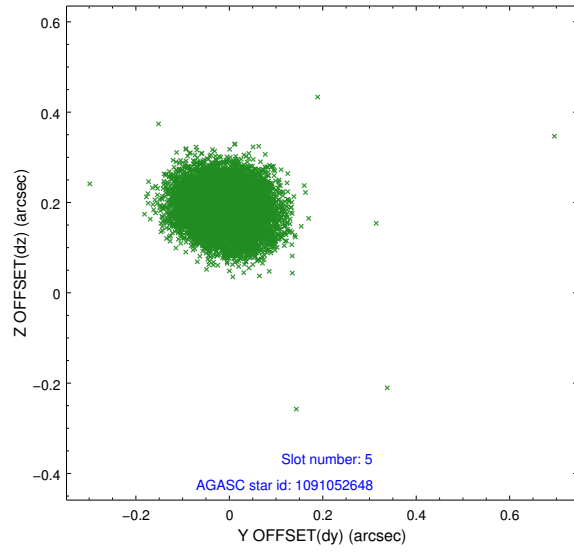
2.4.1 Slot 3



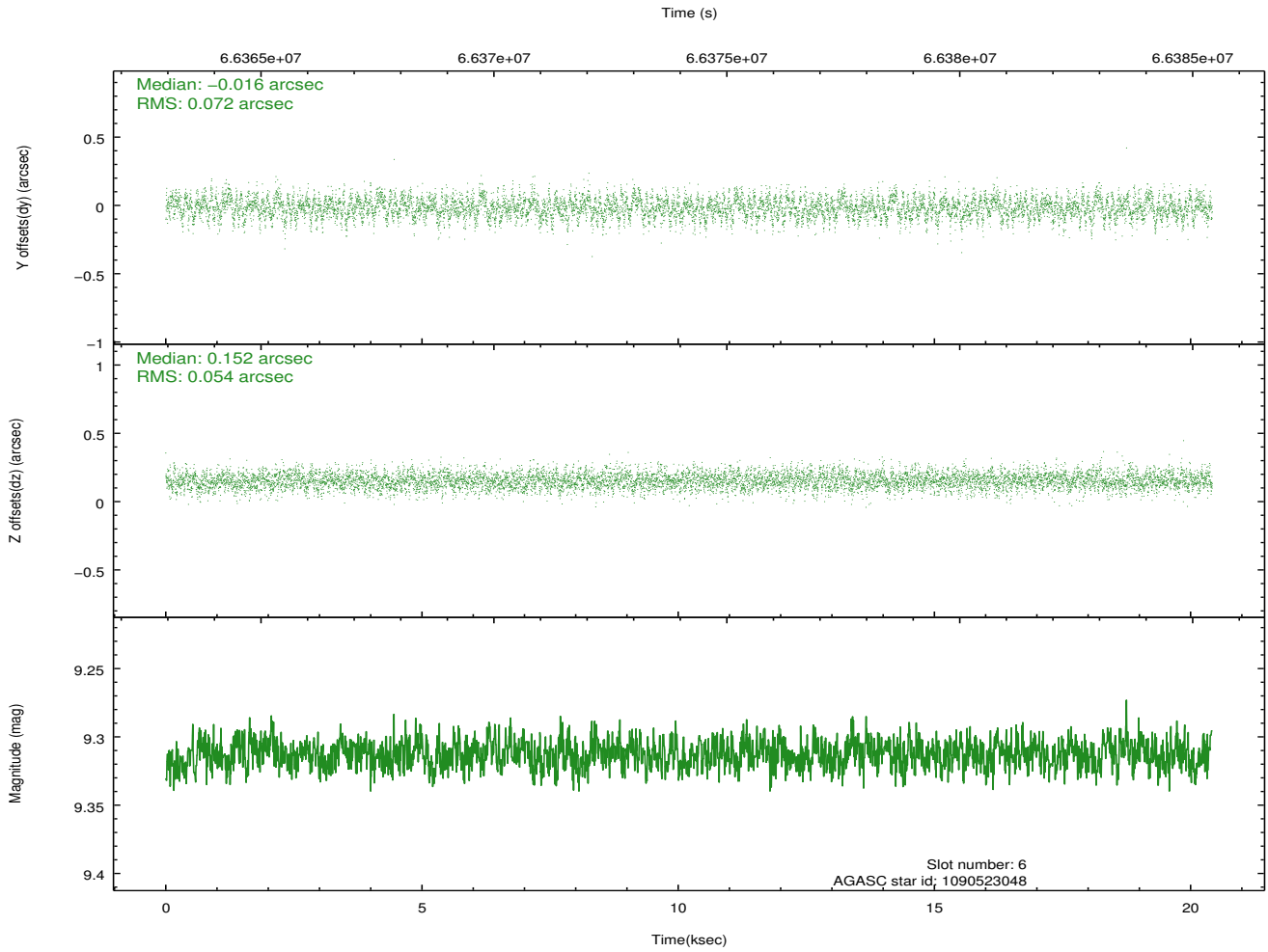
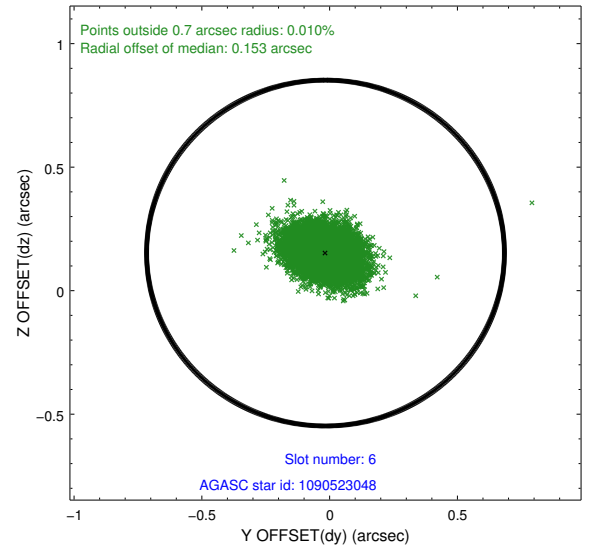
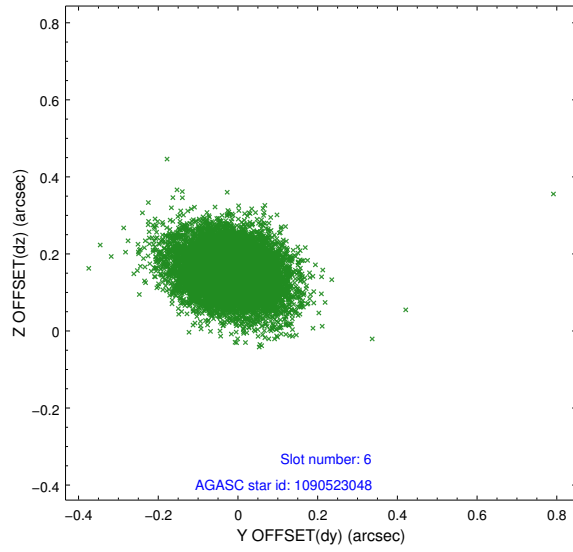
2.4.2 Slot 4



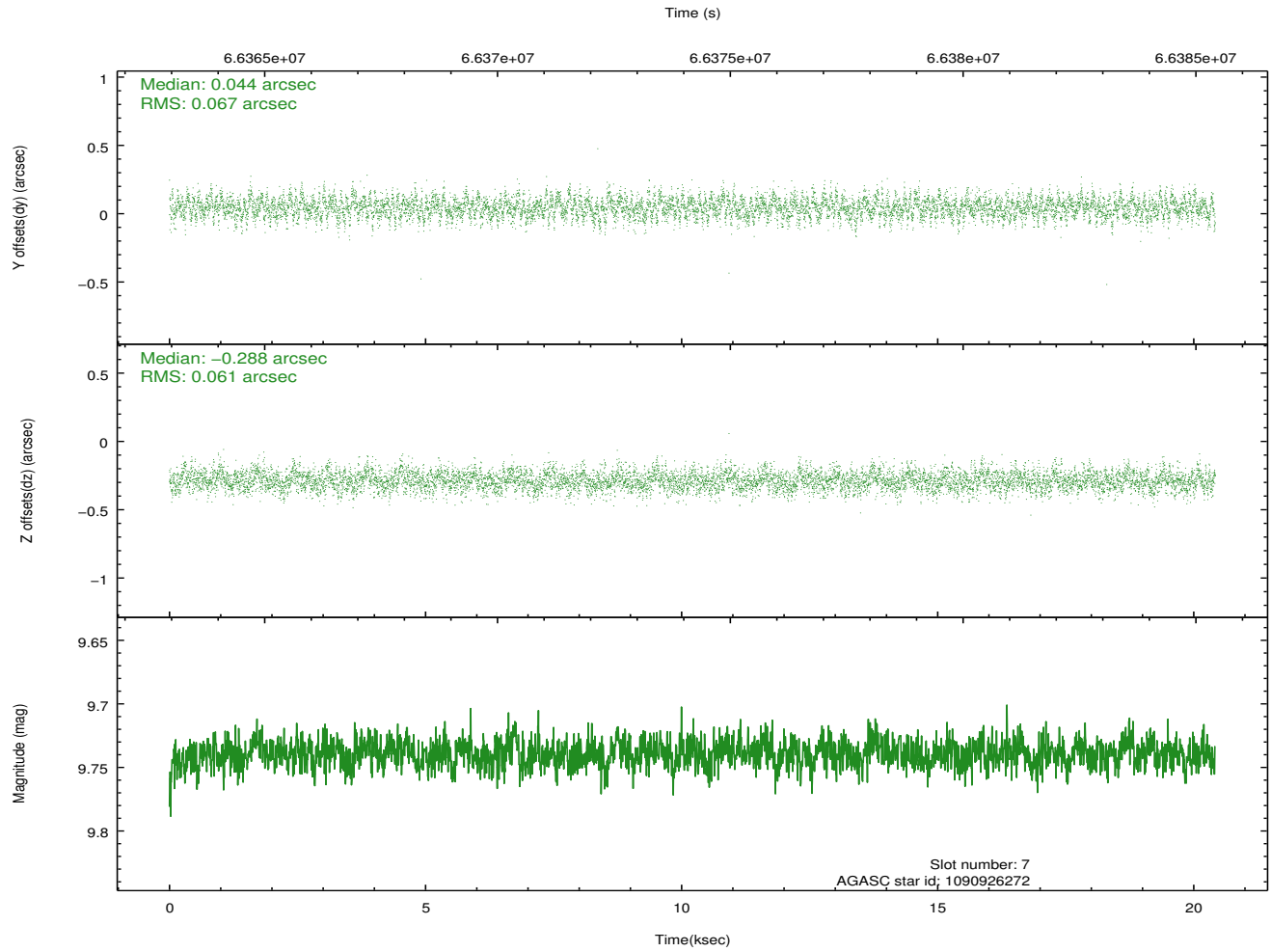
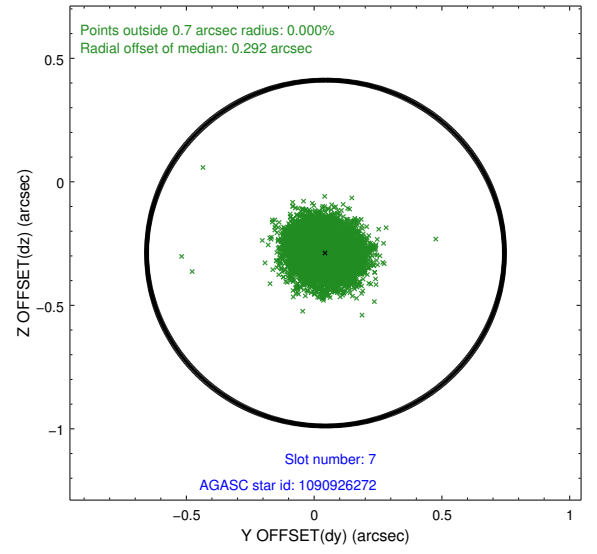
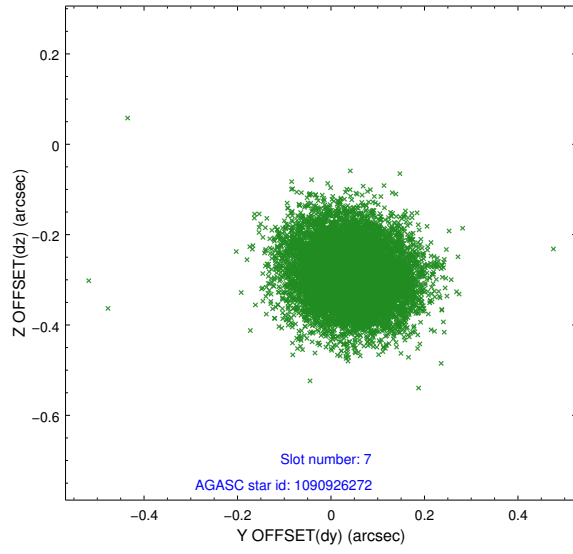
2.4.3 Slot 5



2.4.4 Slot 6

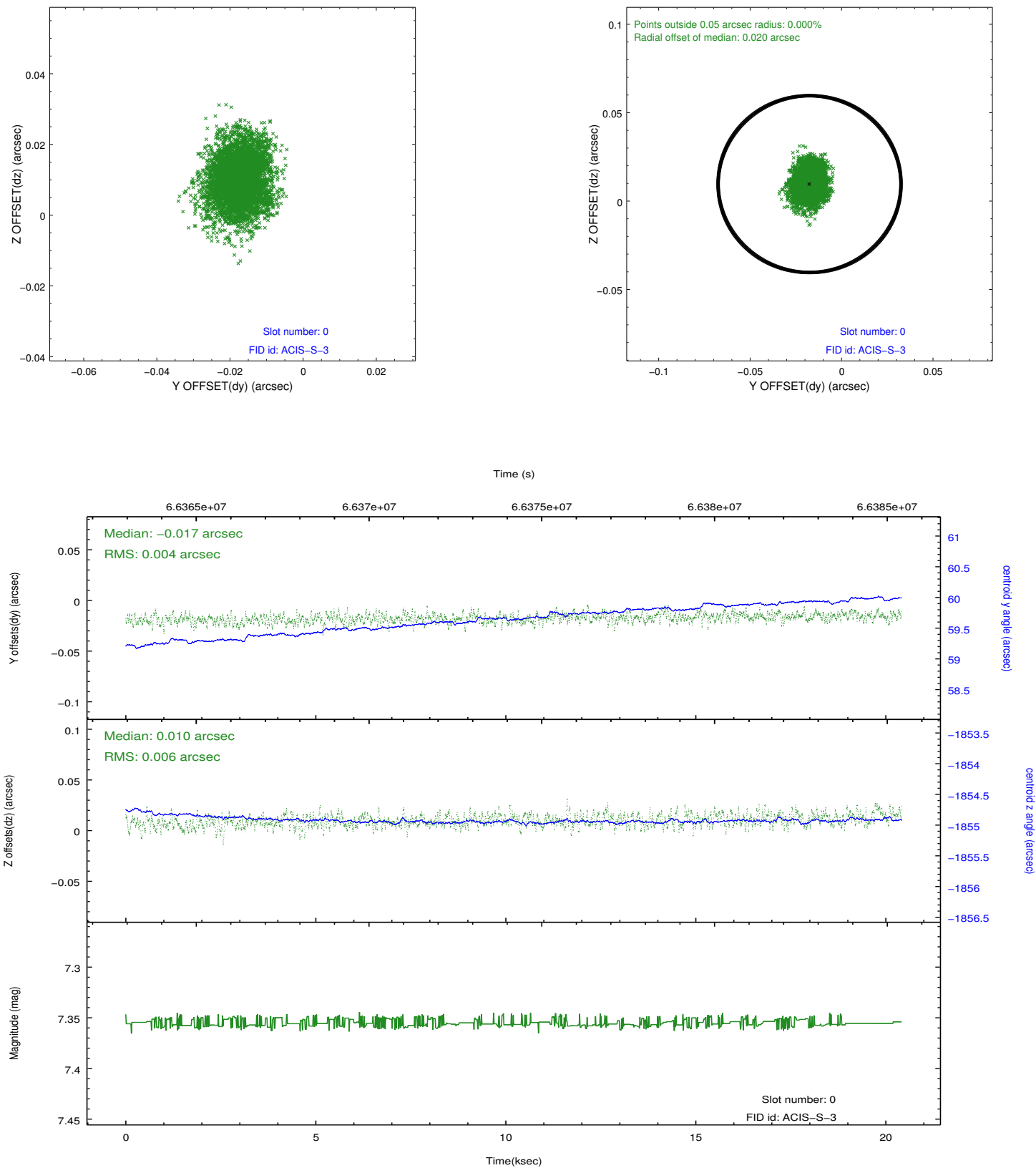


2.4.5 Slot 7

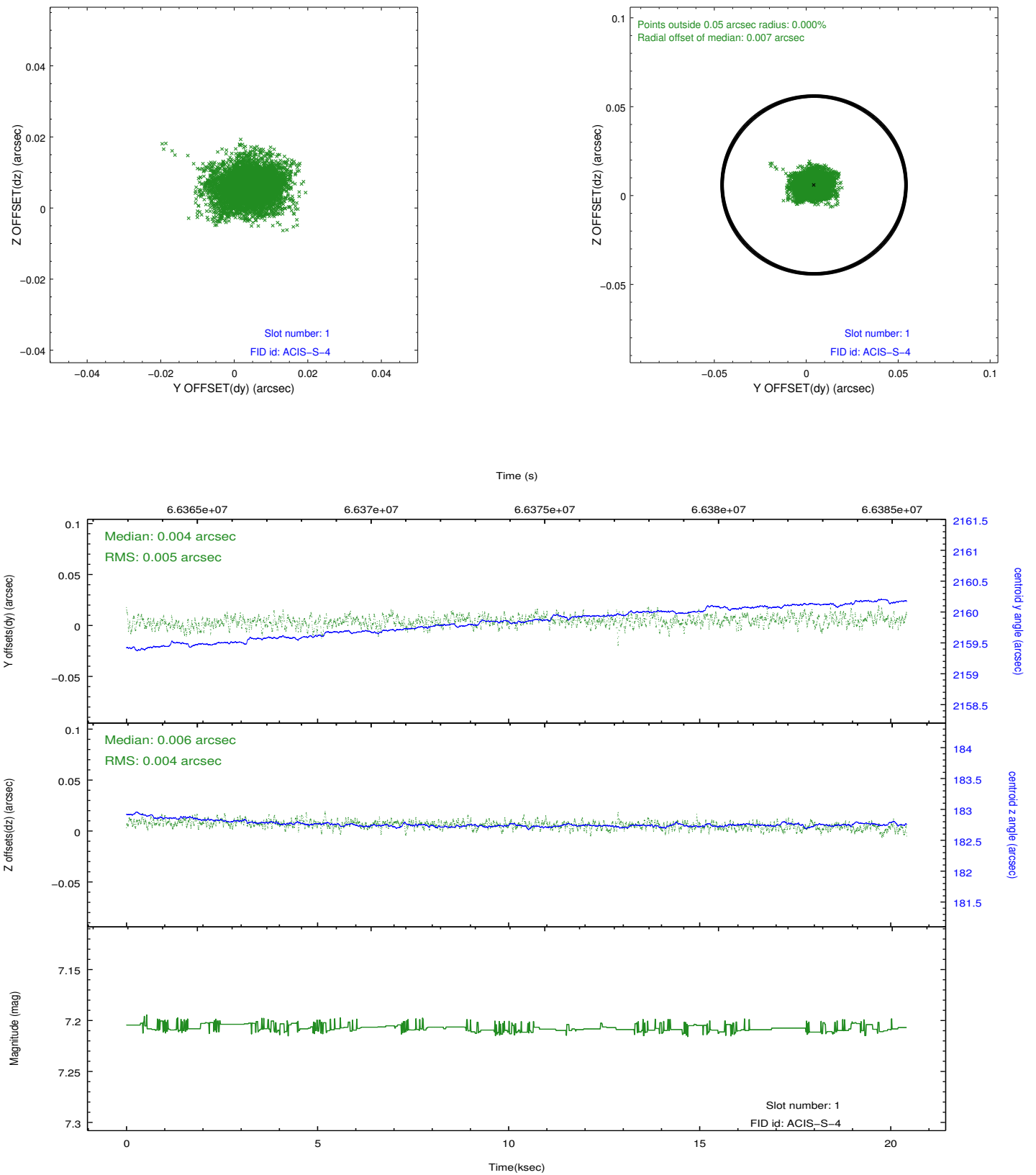


2.5 FID Slots

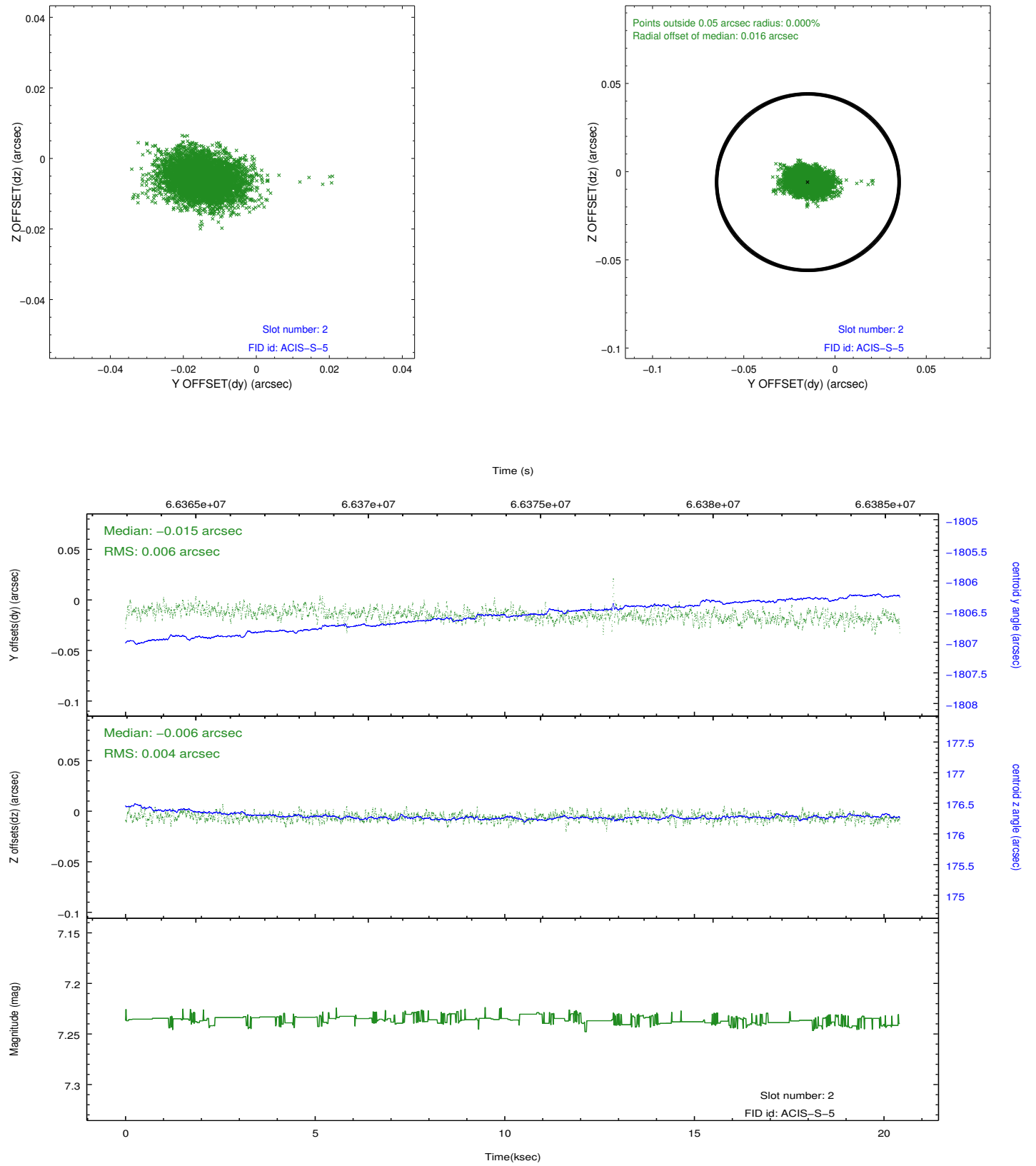
2.5.1 Slot 0



2.5.2 Slot 1



2.5.3 Slot 2



A Summary

A.1 Status

V&V Scientist	Jen Lauer
V&V Date (YYYY-MM-DD)	2012.08.24
V&V Edition	1
V&V Disposition and Status	OK
V&V Charge Time	19.168

A.2 Comments

Roll constraint met.