

# V&V Reference Report

## L2 ASCDS Version : 8.4.4

Observation 9310 - L2 Version 2  
Chandra X-Ray Center

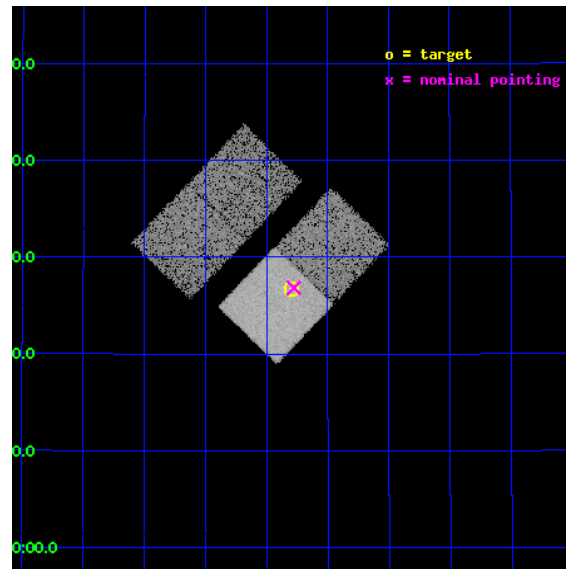
L2 Processing Date : May 11 2012

## Contents

<b>1</b>	<b>Front</b>	<b>2</b>
<b>2</b>	<b>OBI</b>	<b>3</b>
2.1	OBI . . . . .	3
2.1.1	Images . . . . .	3
2.1.2	Bias . . . . .	3
2.1.3	Parameters . . . . .	4
2.1.4	Events . . . . .	4
2.2	Compared Parameters . . . . .	5
2.3	Aspect . . . . .	6
2.4	Star Slots . . . . .	9
2.4.1	Slot 3 . . . . .	9
2.4.2	Slot 4 . . . . .	10
2.4.3	Slot 5 . . . . .	11
2.4.4	Slot 6 . . . . .	12
2.4.5	Slot 7 . . . . .	13
2.5	FID Slots . . . . .	14
2.5.1	Slot 0 . . . . .	14
2.5.2	Slot 1 . . . . .	15
2.5.3	Slot 2 . . . . .	16
<b>A</b>	<b>Summary</b>	<b>17</b>
A.1	Status . . . . .	17
A.2	Comments . . . . .	17

# 1 Front

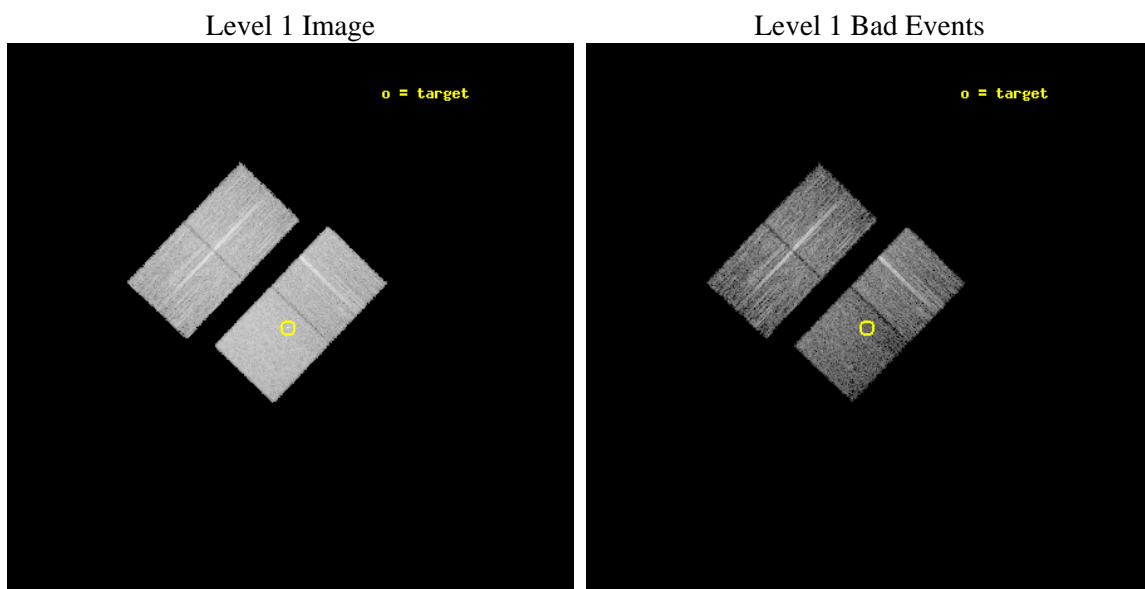
seq_num	701750	Sequence number
obs_id	9310	Observation id
title	Towards a Complete Sample: 3CR Extragalactic Radio Sources with $z < 0.3$	Proposal title
observer	Dr. Daniel Harris	Principal investigator
object	3C293	Source name
dtcycle	0	&#160
cycle	P	events from which exps? Prim/Second/Both
ra_targ	208.074583	Observer's specified target RA [deg]
dec_targ	31.44625	Observer's specified target Dec [deg]
ra_nom	208.06909372182	Nominal RA [deg]
dec_nom	31.447443864476	Nominal Dec [deg]
roll_nom	133.81394136842	Nominal Roll [deg]
revision	2	Processing version of data
ontime	7917.4000608921	Sum of GTIs [s]
livetime	7813.9534003914	Livetime [s]
ontime2	7917.4000608921	Sum of GTIs [s]
ontime3	7917.4000608921	Sum of GTIs [s]
ontime6	7917.4000608921	Sum of GTIs [s]
ontime7	7917.4000608921	Sum of GTIs [s]
l2events	65979	Number of level 2 events



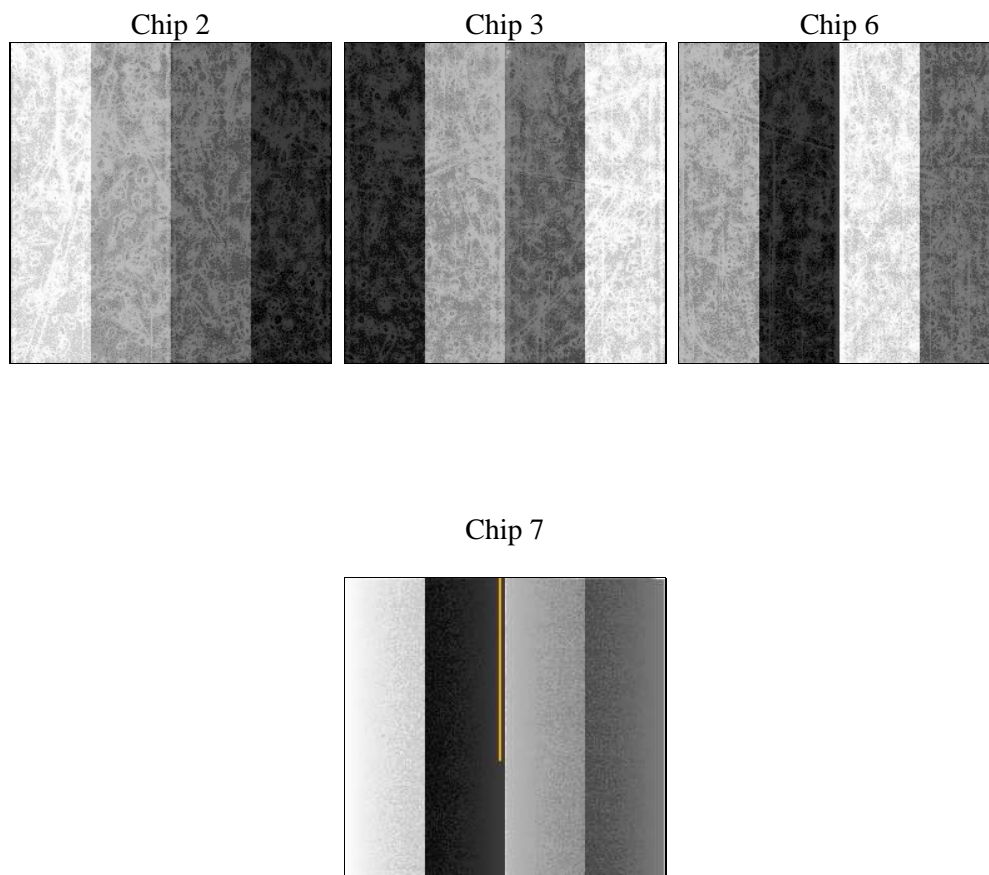
## 2 OBI

### 2.1 OBI

#### 2.1.1 Images



#### 2.1.2 Bias



### 2.1.3 Parameters

obi_num	0	Obi number	sched_exp_time	7870.327000	[s] Scheduled observation exposure time
ascdsver	8.4.4	Processing system revision	ontime	7917.4000608921	Sum of GTIs [s]
caldsver	4.4.9	&#160	ontime2	7917.4000608921	Sum of GTIs [s]
date	2012-05-11T14:01:21	Date and time of file creation	ontime3	7917.4000608921	Sum of GTIs [s]
revision	2	Processing version of data	ontime6	7917.4000608921	Sum of GTIs [s]
			ontime7	7917.4000608921	Sum of GTIs [s]
			l1events	277679	Number of level 1 events

### 2.1.4 Events

	ccd 2	ccd 3	ccd 6	ccd 7
level 1 events	67453	63709	67513	79004
rejected events	57876	54266	56818	38590
rejected %	85%	85%	84%	48%

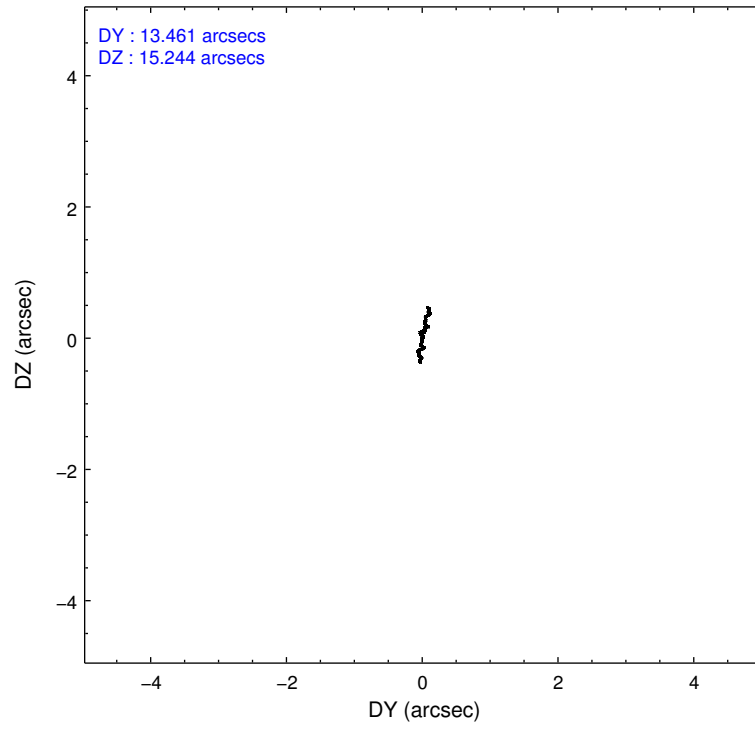
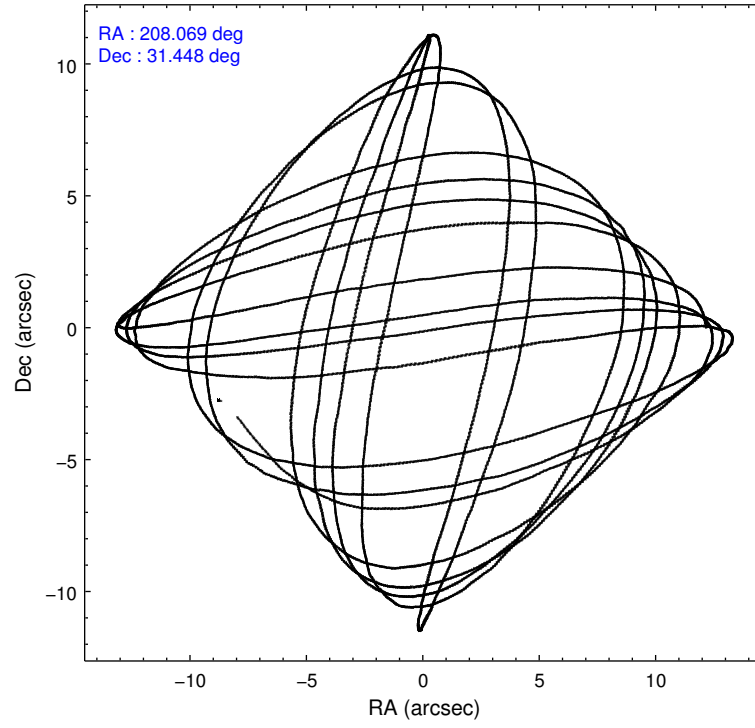
	ccd 2	ccd 3	ccd 6	ccd 7
grade 0 events	4781	4740	5169	3928
	7%	7%	7%	4%
grade 1 events	61	56	45	81
	0%	0%	0%	0%
grade 2 events	1836	1628	1955	7904
	2%	2%	2%	10%
grade 3 events	798	807	866	3425
	1%	1%	1%	4%
grade 4 events	841	837	906	3406
	1%	1%	1%	4%
grade 5 events	2087	2443	2567	7443
	3%	3%	3%	9%
grade 6 events	1329	1435	1802	21773
	1%	2%	2%	27%
grade 7 events	55720	51763	54203	31044
	82%	81%	80%	39%

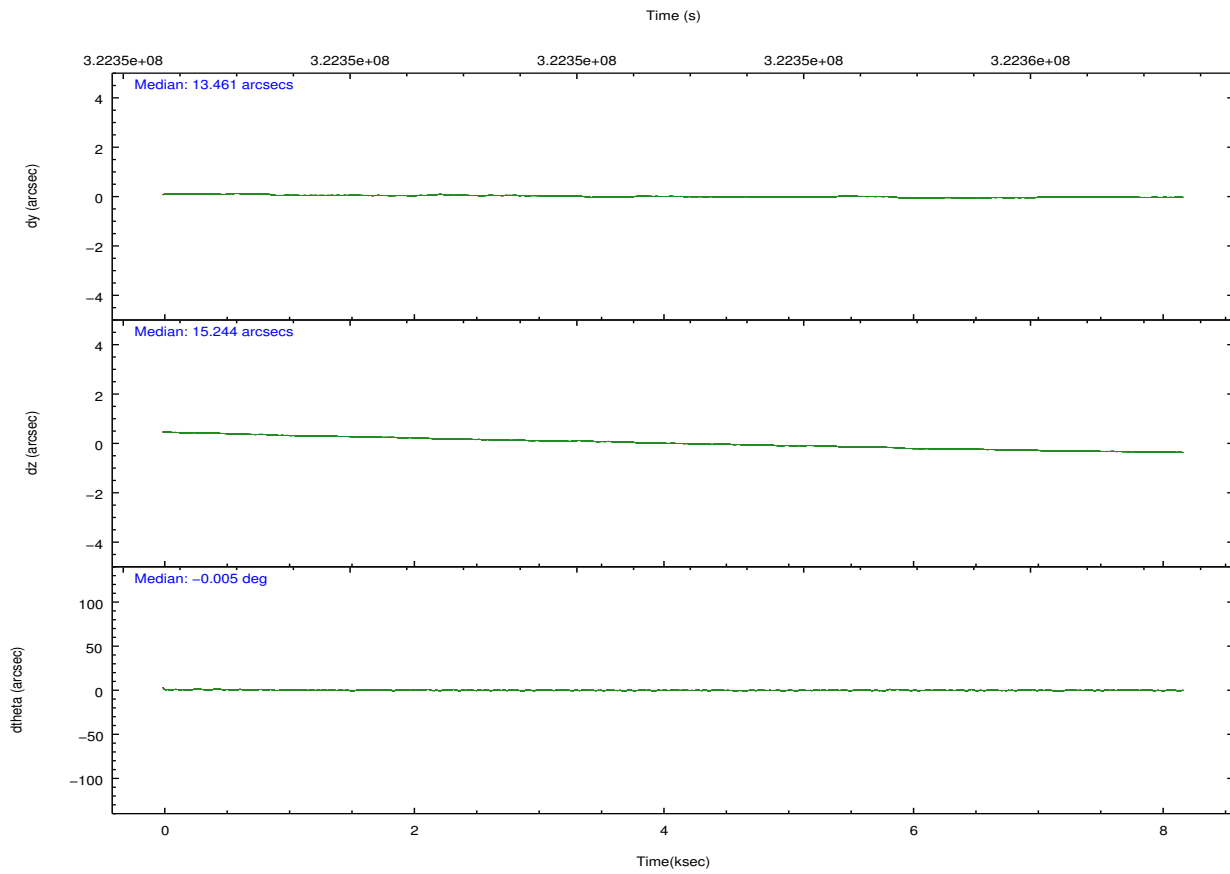
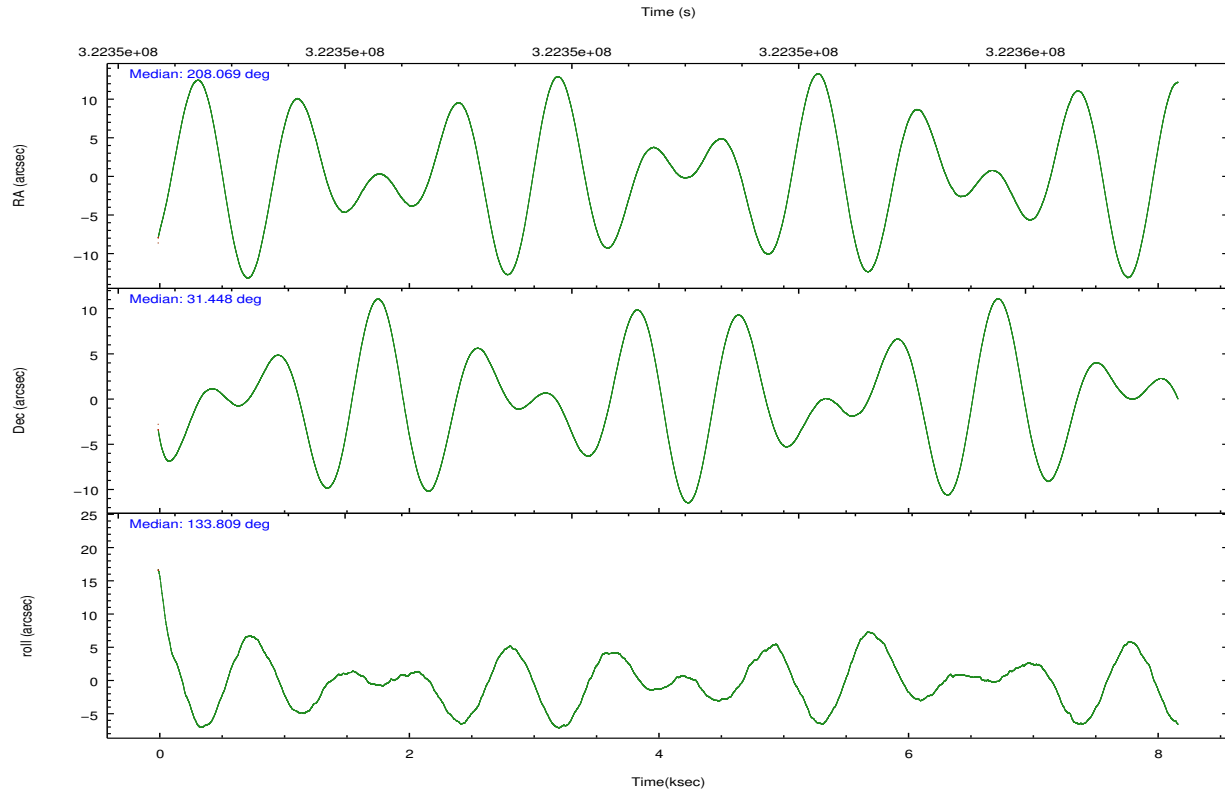


## 2.2 Compared Parameters

Parameter	Planned	Actual	Parameter	Planned	Actual
Instrument	ACIS	ACIS	Obspar format version number	7	7
Detector	ACIS-2367	ACIS-2367	Obspar file type	PREDICTED	ACTUAL
Grating	NONE	NONE	Obspar update status	NONE	UPDATED
Data mode	VFAINT	VFAINT	Number of optional ACIS chips dropped	0	0
Observation mode	POINTING	POINTING	On-chip summing requested	N	N
[deg] Pointing RA	208.099976	208.0690937218172	Subarray requested	NONE	NONE
[deg] Pointing Dec	31.440193	31.44744386447589	Alternating exposures requested	N	N
[deg] Pointing Roll	133.641200	133.8139413684155	[s] Primary exposure time	0.000000	3.1
[mm] SIM focus pos	-0.684267	-0.6828225247311905			
[mm] SIM defocus	0	0.001444936568705701			
[mm] SIM translation stage pos	-190.132523	-190.145094680475			
[mm] SIM translation stage offset	0	0.01257209746719923			
[s] Observation start time (MET)	322349057.184000	322348126.4086			
Observation start date	2008-03-19T21:23:12	2008-03-19T21:08:46			
[s] Observation end time (MET)	322356927.184000	322357153.58404			
Observation end date	2008-03-19T23:34:22	2008-03-19T23:39:13			
Read mode	TIMED	TIMED			

## 2.3 Aspect



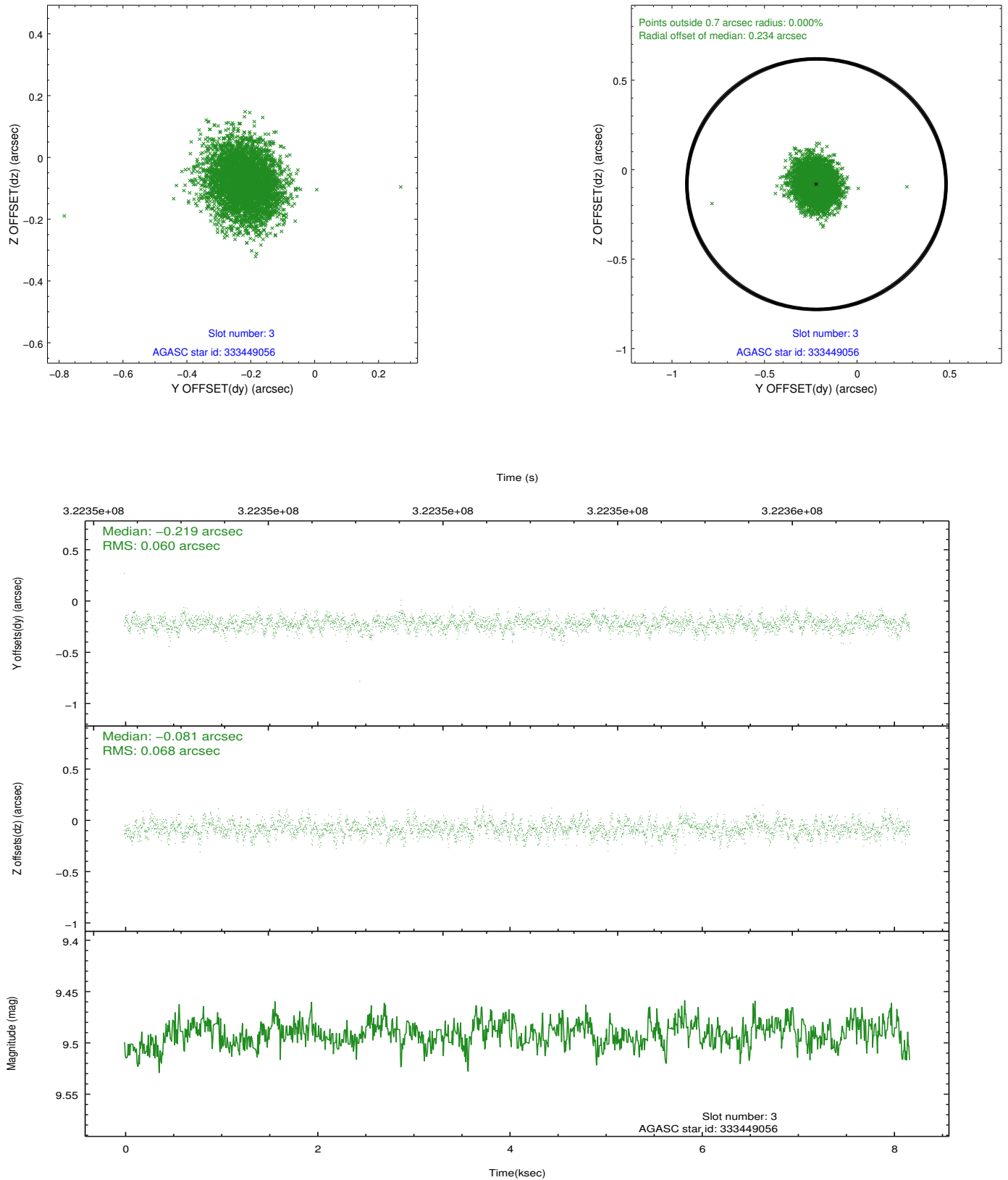


### Slot Statistics

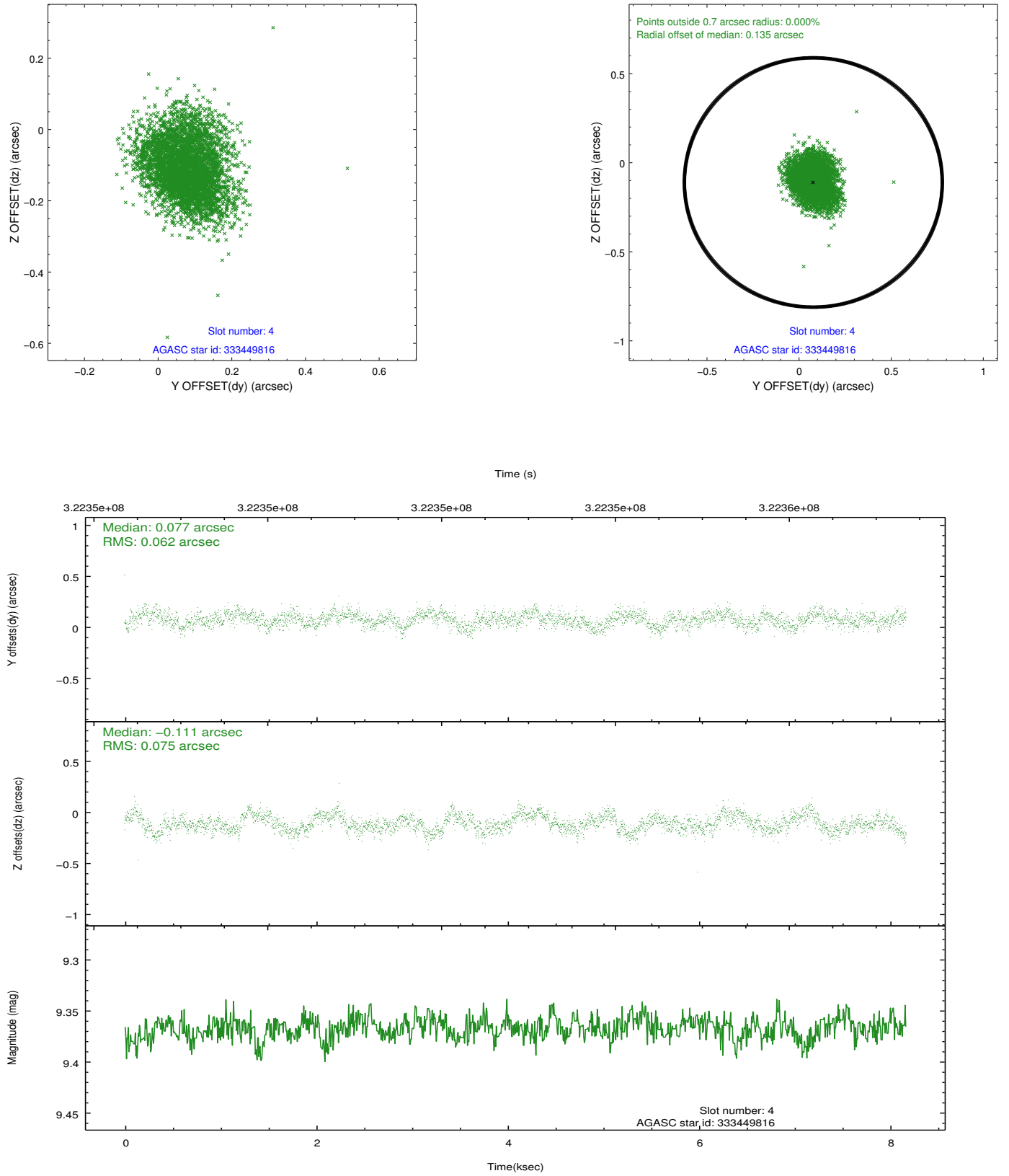
slot	status	id	mag	n_pts	med_dy	med_dz	dr1	dr2	ra	dec	mean_y	mean_z
0	FID	ACIS-S-2	7.10	1994	-0.065	-0.035	0.007	0.012	0.000000	0.000000	-766.44	-1736.59
1	FID	ACIS-S-4	7.19	1994	0.192	0.041	0.006	0.012	0.000000	0.000000	2146.75	171.31
2	FID	ACIS-S-5	7.22	1993	-0.158	0.003	0.007	0.012	0.000000	0.000000	-1818.53	165.66
3	GUIDE	333449056	9.49	3981	-0.219	-0.081	0.096	0.156	207.529257	31.232242	673.80	1785.25
4	GUIDE	333449816	9.37	3973	0.077	-0.111	0.103	0.164	208.062357	30.925626	-1260.01	1362.91
5	GUIDE	333449936	8.84	3985	0.102	0.050	0.100	0.158	208.438512	31.665638	-126.68	-1311.28
6	GUIDE	333455640	7.79	3987	0.185	0.106	0.078	0.120	207.083815	31.401053	2063.64	2347.06
7	GUIDE	333447712	10.16	3982	-0.151	0.035	0.178	0.282	208.849285	31.435939	-1593.04	-1659.85

## 2.4 Star Slots

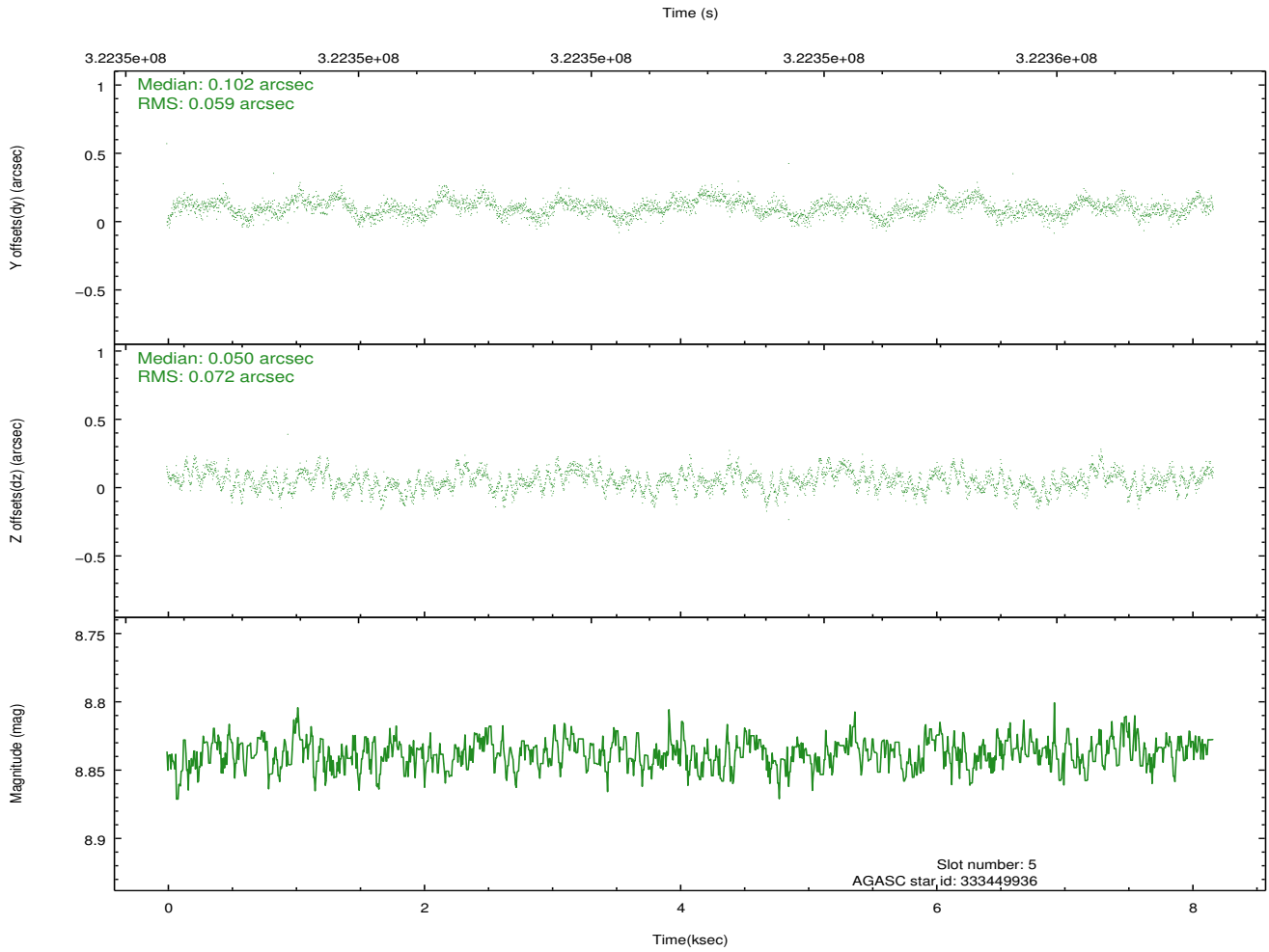
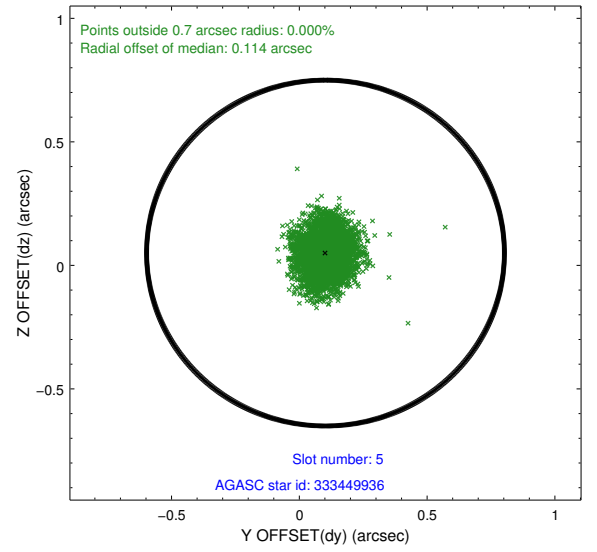
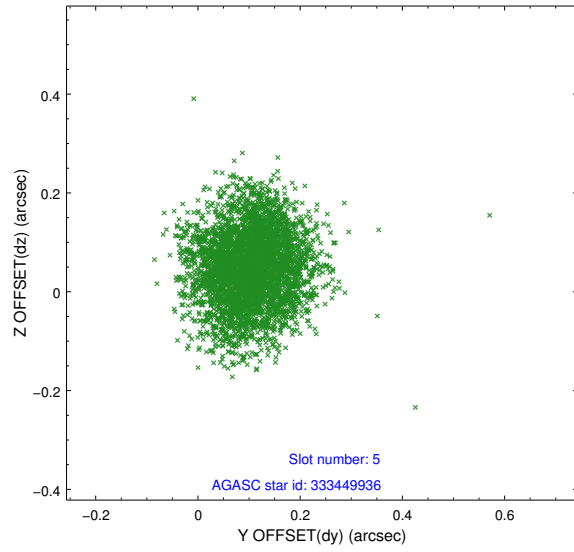
### 2.4.1 Slot 3



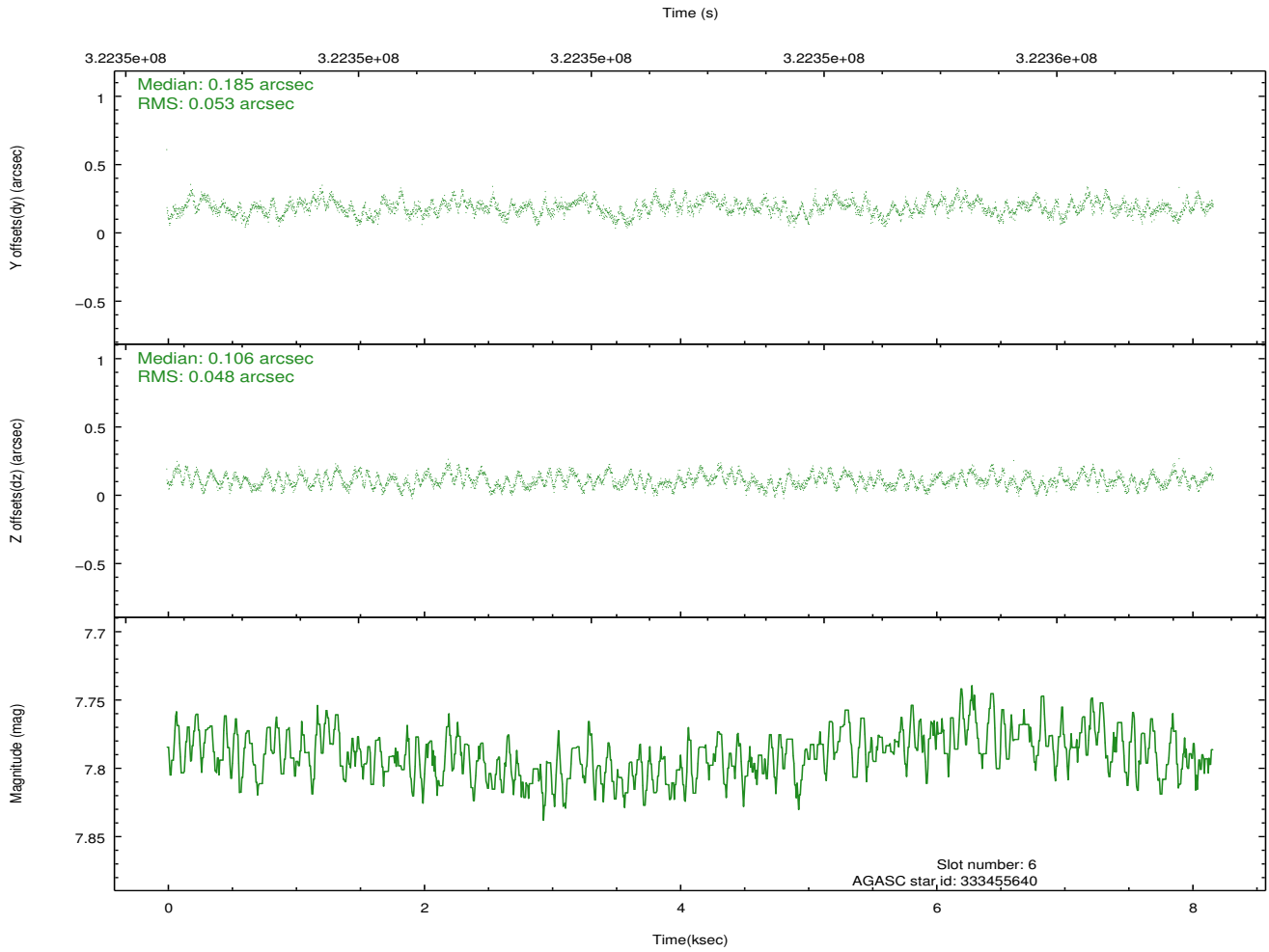
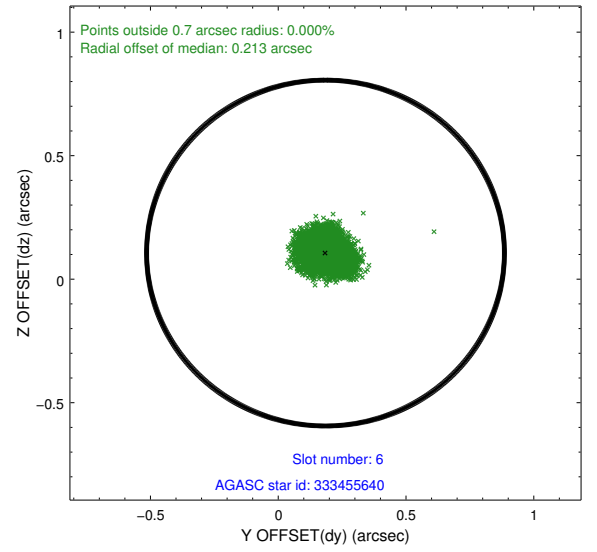
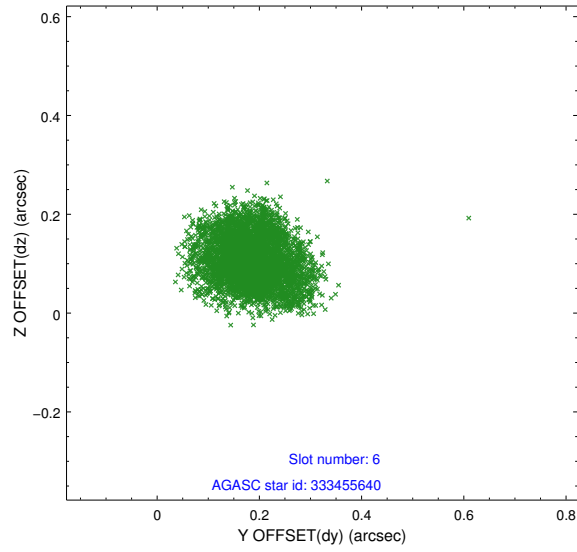
## 2.4.2 Slot 4



### 2.4.3 Slot 5

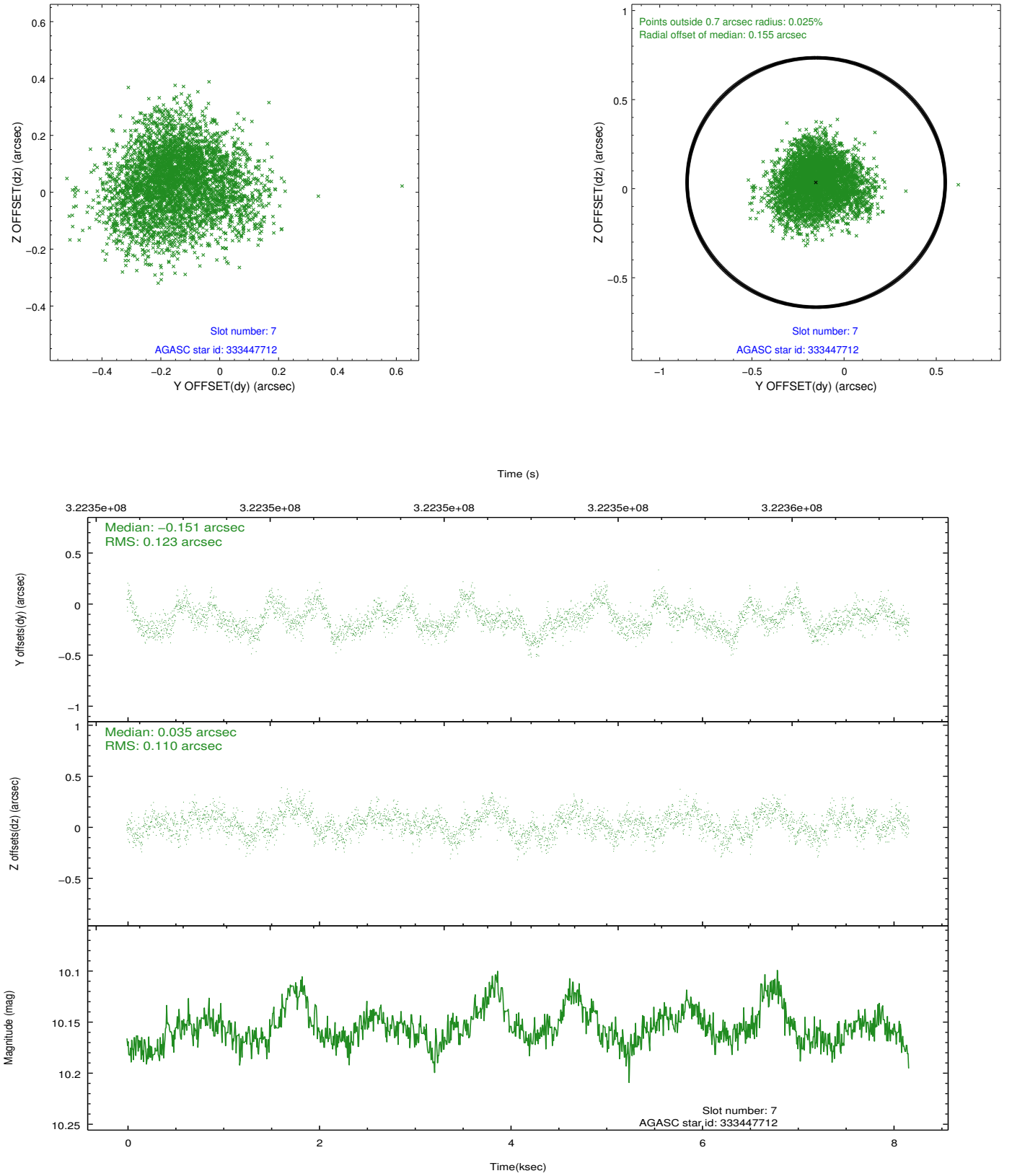


## 2.4.4 Slot 6



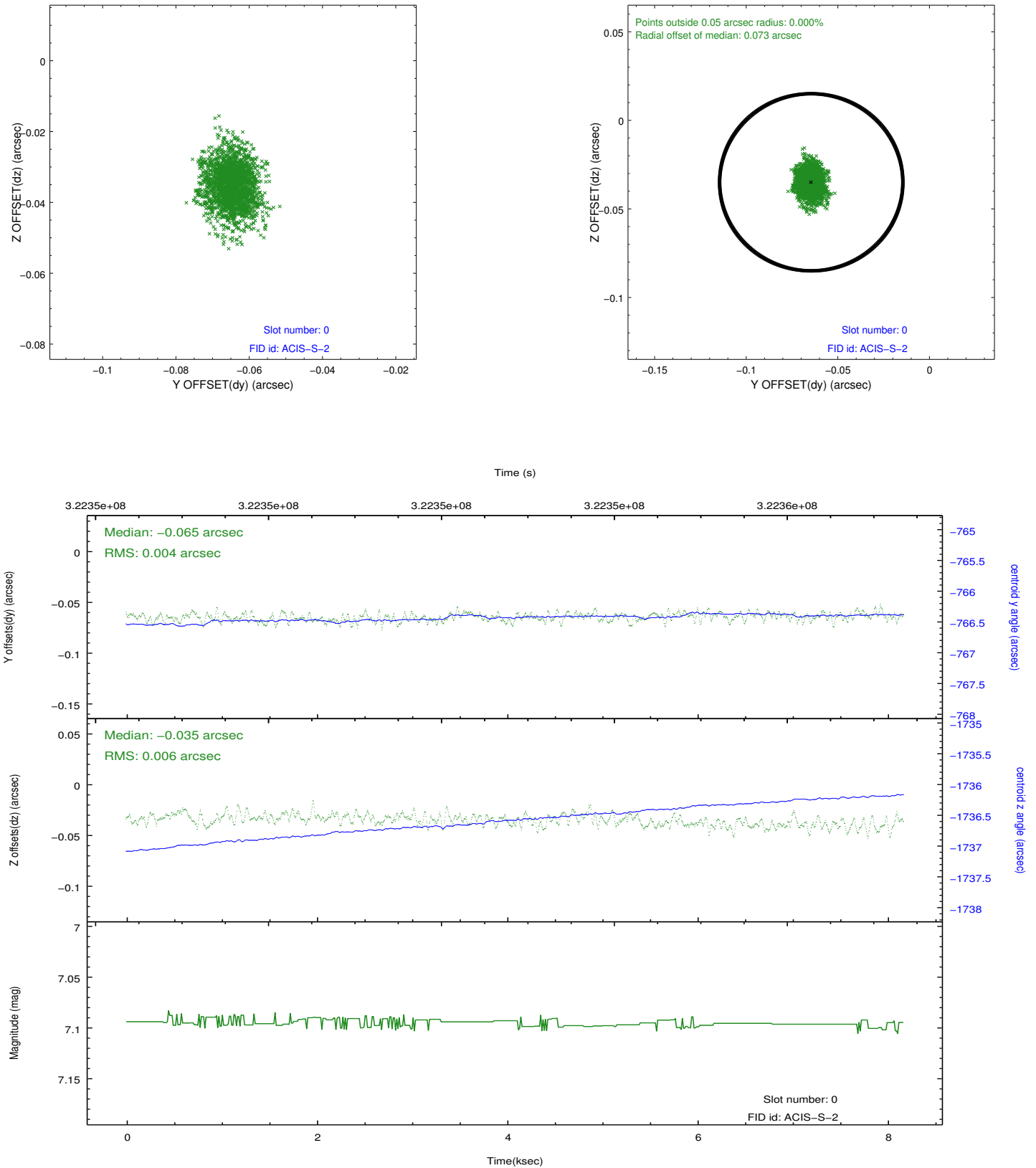


## 2.4.5 Slot 7

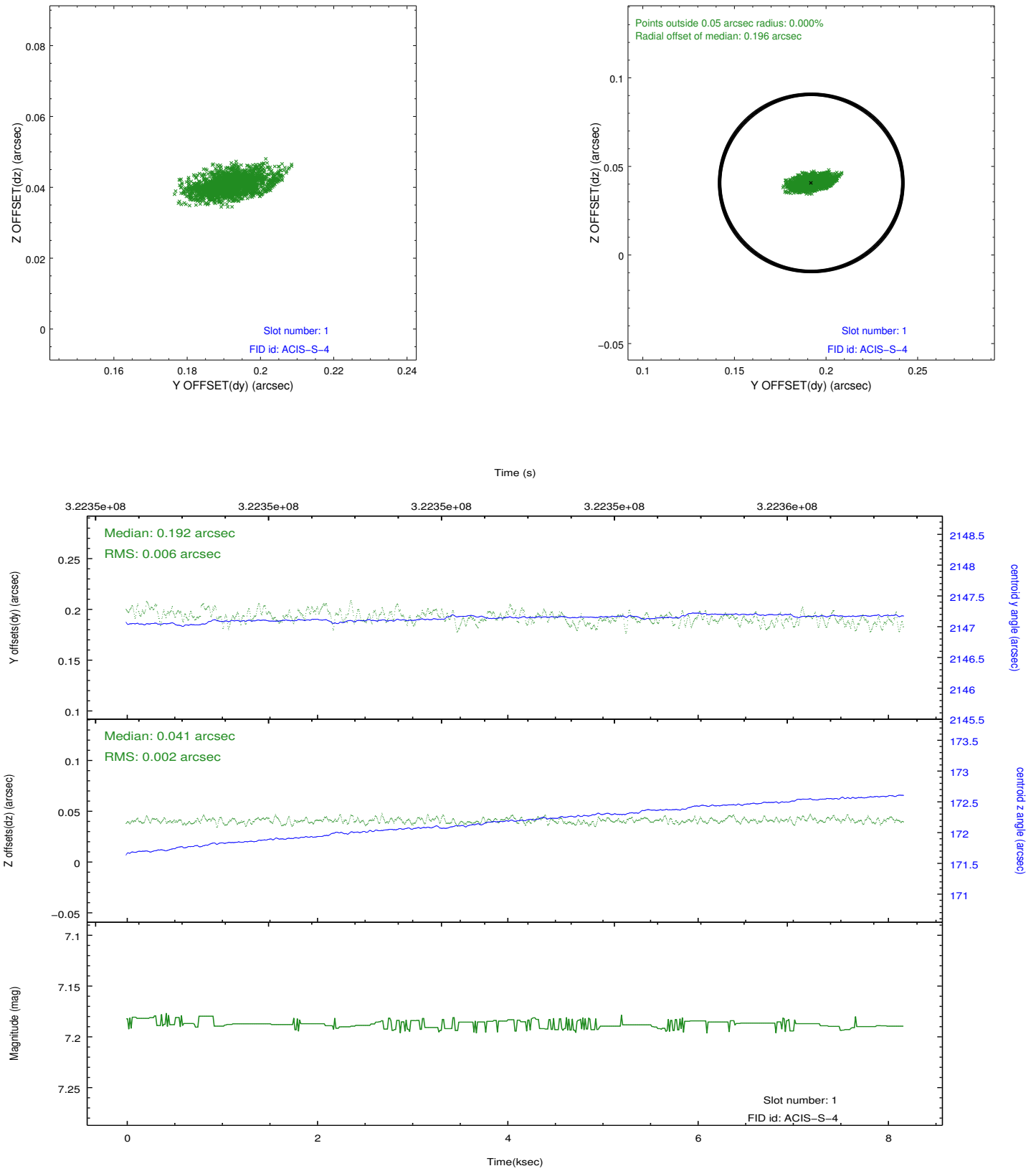


## 2.5 FID Slots

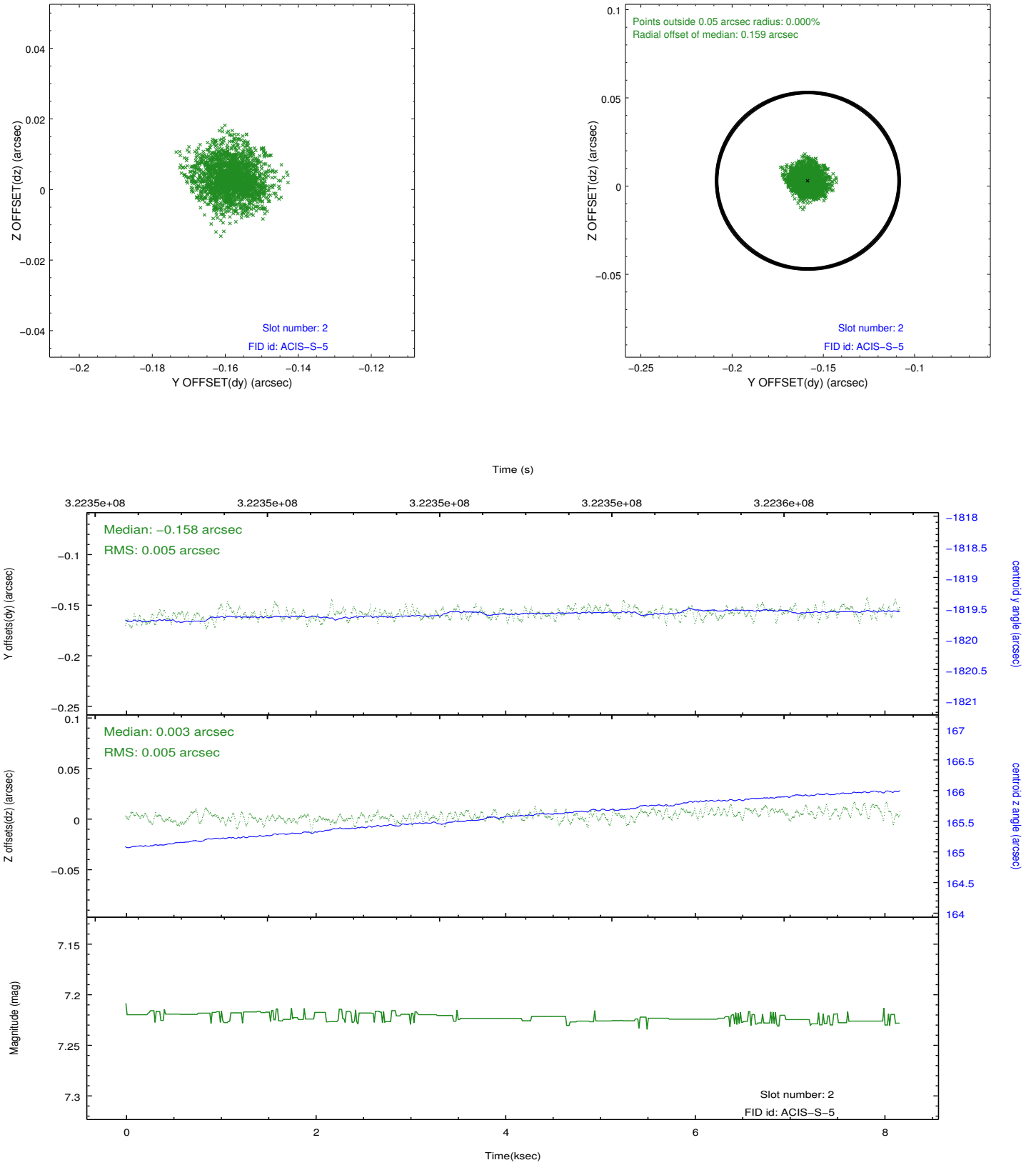
### 2.5.1 Slot 0



## 2.5.2 Slot 1



### 2.5.3 Slot 2



## A Summary

### A.1 Status

V&V Scientist	Jen Lauer
V&V Date (YYYY-MM-DD)	2012.05.14
V&V Edition	1
V&V Disposition and Status	OK
V&V Charge Time	7.91740006

### A.2 Comments