

V&V Reference Report

L2 ASCDS Version : 8.4.4

Observation 9280 - L2 Version 2
Chandra X-Ray Center

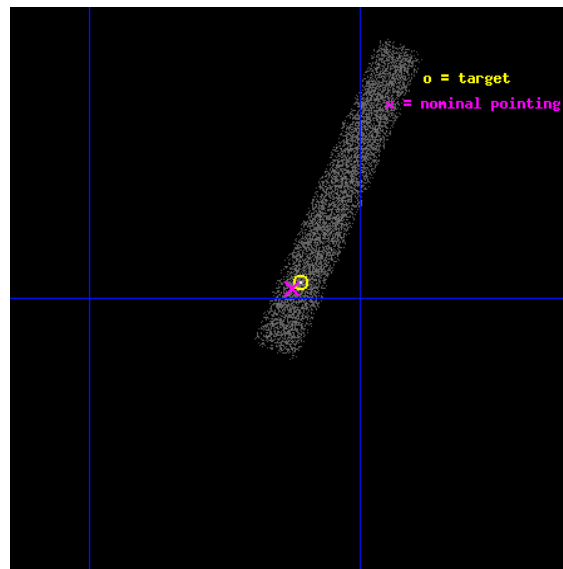
L2 Processing Date : May 12 2012

Contents

1	Front	2
2	OBI	3
2.1	OBI	3
2.1.1	Images	3
2.1.2	Bias	3
2.1.3	Parameters	4
2.1.4	Events	4
2.2	Compared Parameters	5
2.3	Aspect	6
2.4	Star Slots	9
2.4.1	Slot 3	9
2.4.2	Slot 4	10
2.4.3	Slot 5	11
2.4.4	Slot 6	12
2.4.5	Slot 7	13
2.5	FID Slots	14
2.5.1	Slot 0	14
2.5.2	Slot 1	15
2.5.3	Slot 2	16
A	Summary	17
A.1	Status	17
A.2	Comments	17

1 Front

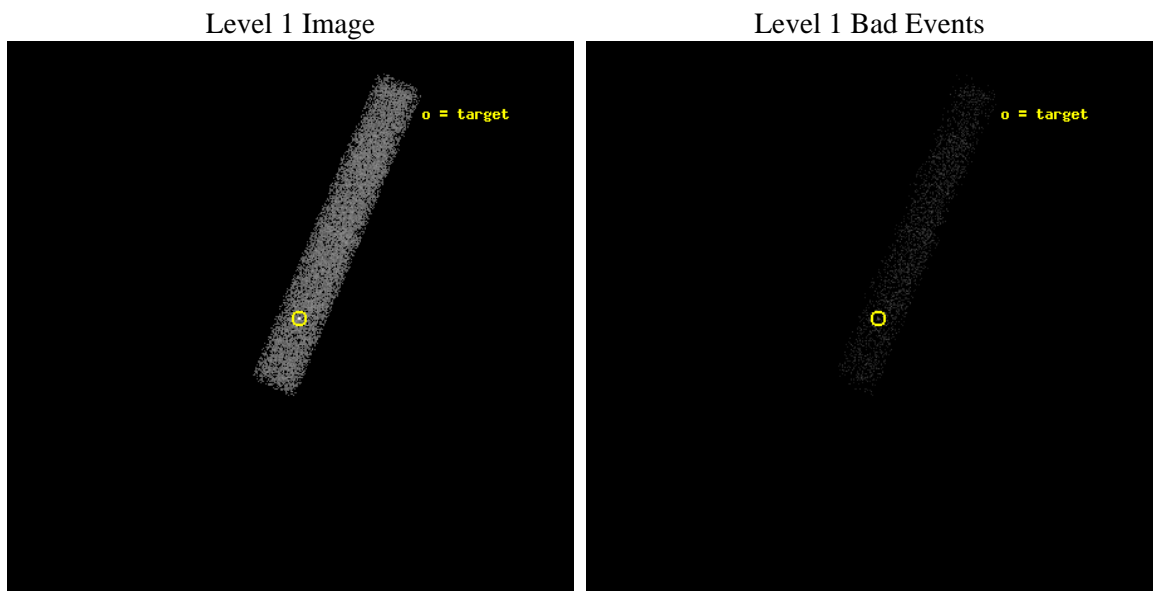
seq_num	701720	Sequence number
obs_id	9280	Observation id
title	Surveying X-ray Jets in Superluminal Blazars	Proposal title
observer	Dr. Matthew Lister	Principal investigator
object	1045-188	Source name
dtcycle	0	
cycle	P	events from which exps? Prim/Second/Both
ra_targ	162.0275	Observer's specified target RA [deg]
dec_targ	-19.159917	Observer's specified target Dec [deg]
ra_nom	162.03174764749	Nominal RA [deg]
dec_nom	-19.162728809973	Nominal Dec [deg]
roll_nom	292.84202582194	Nominal Roll [deg]
revision	2	Processing version of data
ontime	10181.599393129	Sum of GTIs [s]
livetime	9234.1732206869	Livetime [s]
ontime7	10181.599393129	Sum of GTIs [s]
l2events	8905	Number of level 2 events



2 OBI

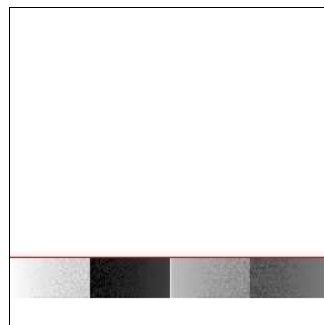
2.1 OBI

2.1.1 Images



2.1.2 Bias

Chip 7



2.1.3 Parameters

obi_num	0	Obi number	sched_exp_time	10000.000000	[s] Scheduled observation exposure time
ascdsver	8.4.4	Processing system revision	ontime	10181.599393129	Sum of GTIs [s]
caldsver	4.4.9	 	ontime7	10181.599393129	Sum of GTIs [s]
date	2012-05-12T13:10:42	Date and time of file creation	l1events	20551	Number of level 1 events
revision	2	Processing version of data			

2.1.4 Events

	ccd 7
level 1 events	20551
rejected events	11406
rejected %	55%

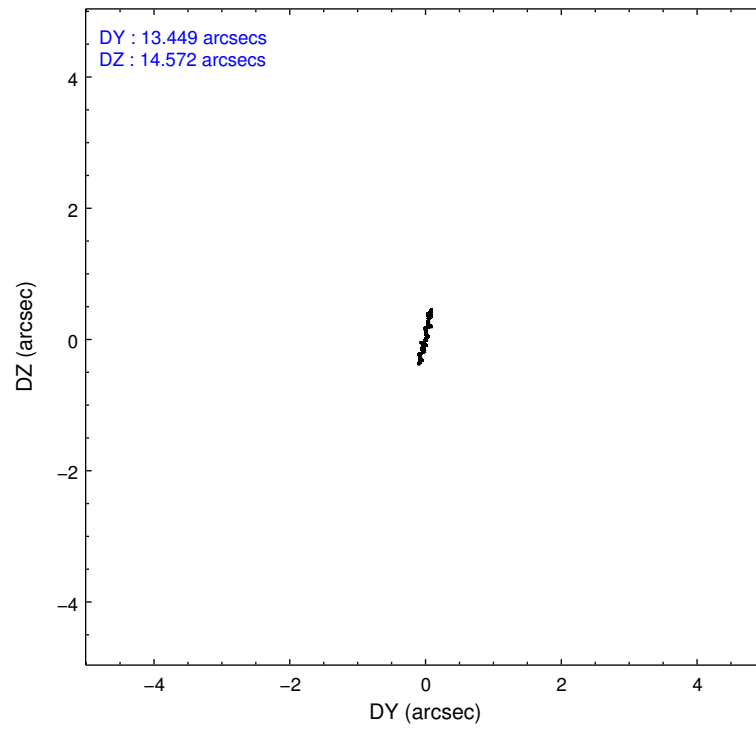
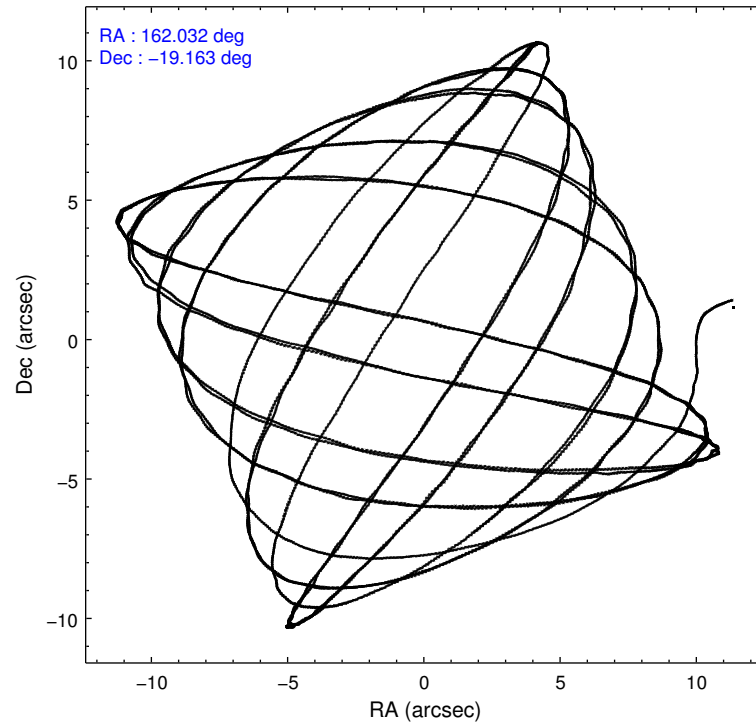
	ccd 7
grade 0 events	1160
	5%
grade 1 events	34
	0%
grade 2 events	2019
	9%
grade 3 events	1213
	5%
grade 4 events	1222
	5%
grade 5 events	1732
	8%
grade 6 events	4436
	21%
grade 7 events	8735
	42%

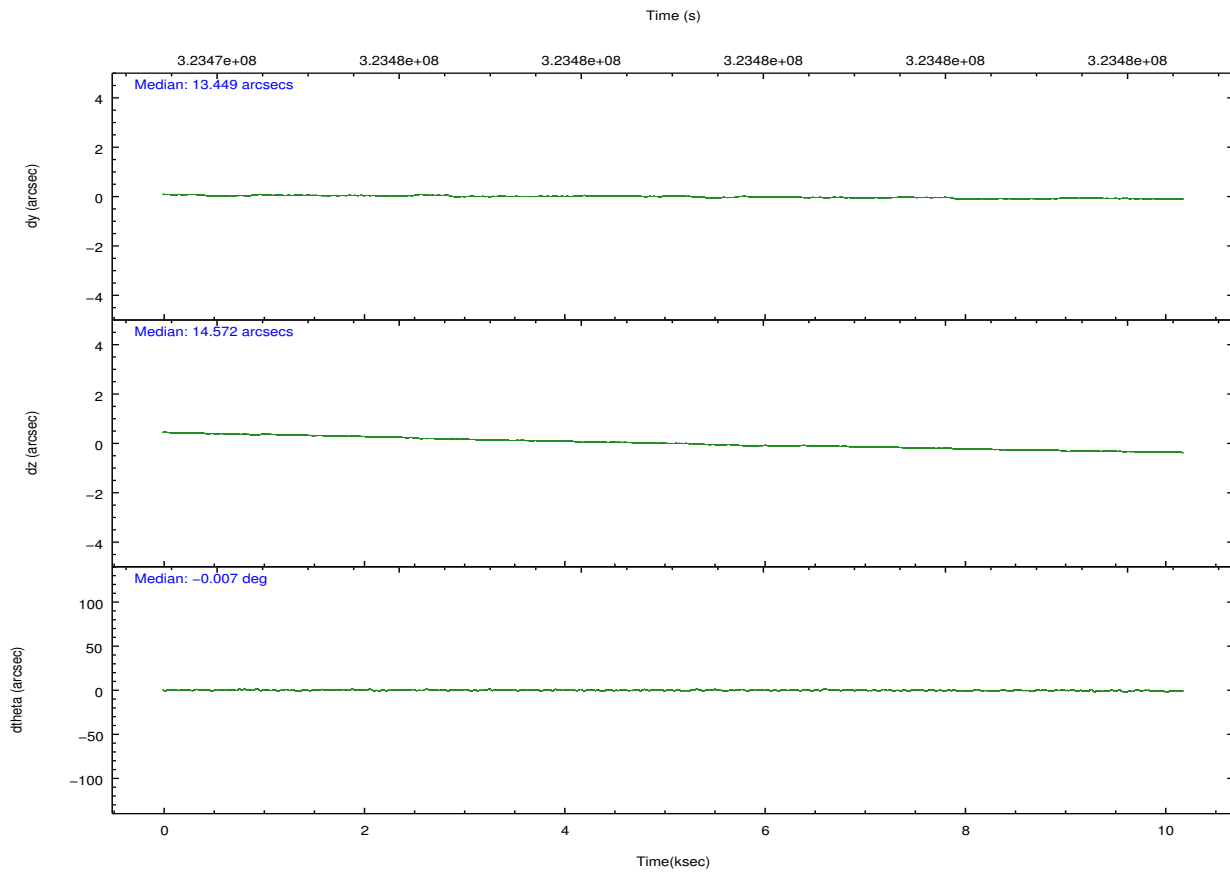
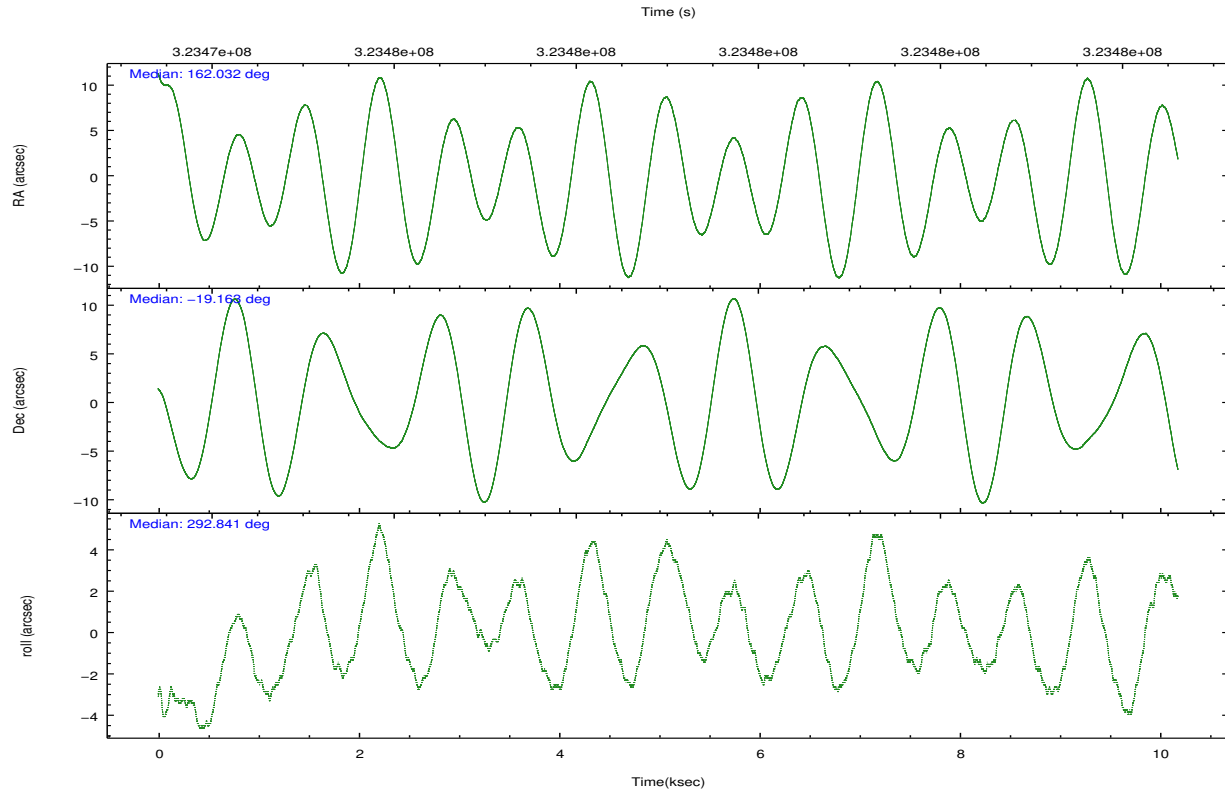
2.2 Compared Parameters

Parameter	Planned	Actual
Instrument	ACIS	ACIS
Detector	ACIS-7	ACIS-7
Grating	NONE	NONE
Data mode	VFAINT	VFAINT
Observation mode	POINTING	POINTING
[deg] Pointing RA	162.008375	162.0317476474863
[deg] Pointing Dec	-19.146516	-19.16272880997254
[deg] Pointing Roll	292.677728	292.8420258219351
[mm] SIM focus pos	-0.684267	-0.6828225247311905
[mm] SIM defocus	0	0.001444936568705701
[mm] SIM translation stage pos	-181.422523	-181.4329921605696
[mm] SIM translation stage offset	-8.710000000000001	-8.699530422438215
[s] Observation start time (MET)	323474092.184000	323472787.21332
Observation start date	2008-04-01T21:53:47	2008-04-01T21:33:07
[s] Observation end time (MET)	323484092.184000	323485869.80146
Observation end date	2008-04-02T00:40:27	2008-04-02T01:11:09
Read mode	TIMED	TIMED

Parameter	Planned	Actual
Obspar format version number	7	7
Obspar file type	PREDICTED	ACTUAL
Obspar update status	NONE	UPDATED
Number of optional ACIS chips dropped	0	0
On-chip summing requested	N	N
Subarray requested	CUSTOM	1/8
Subarray start row	100	100
Subarray row count	128	128
Alternating exposures requested	N	N
[s] Primary exposure time	0.000000	0.4

2.3 Aspect



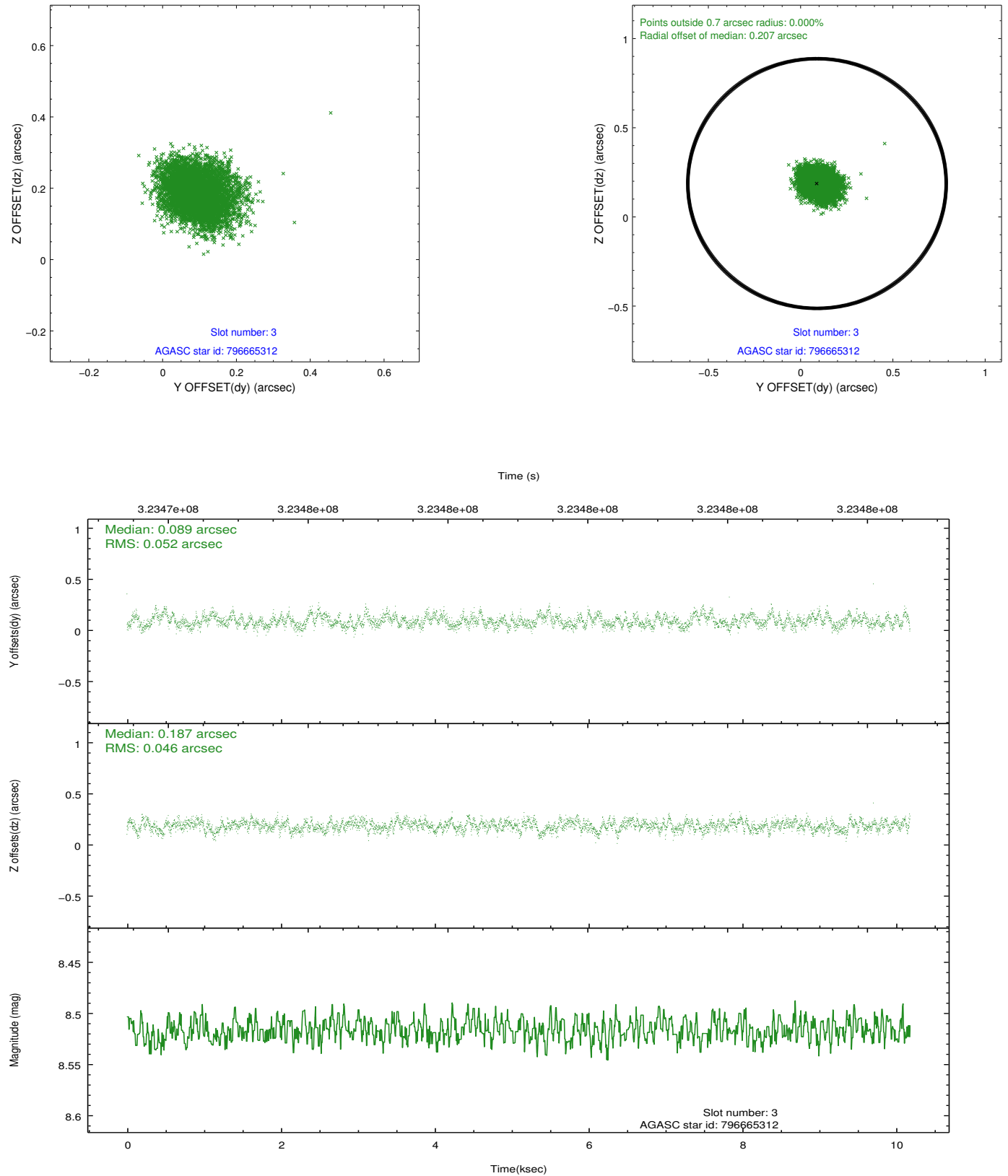


Slot Statistics

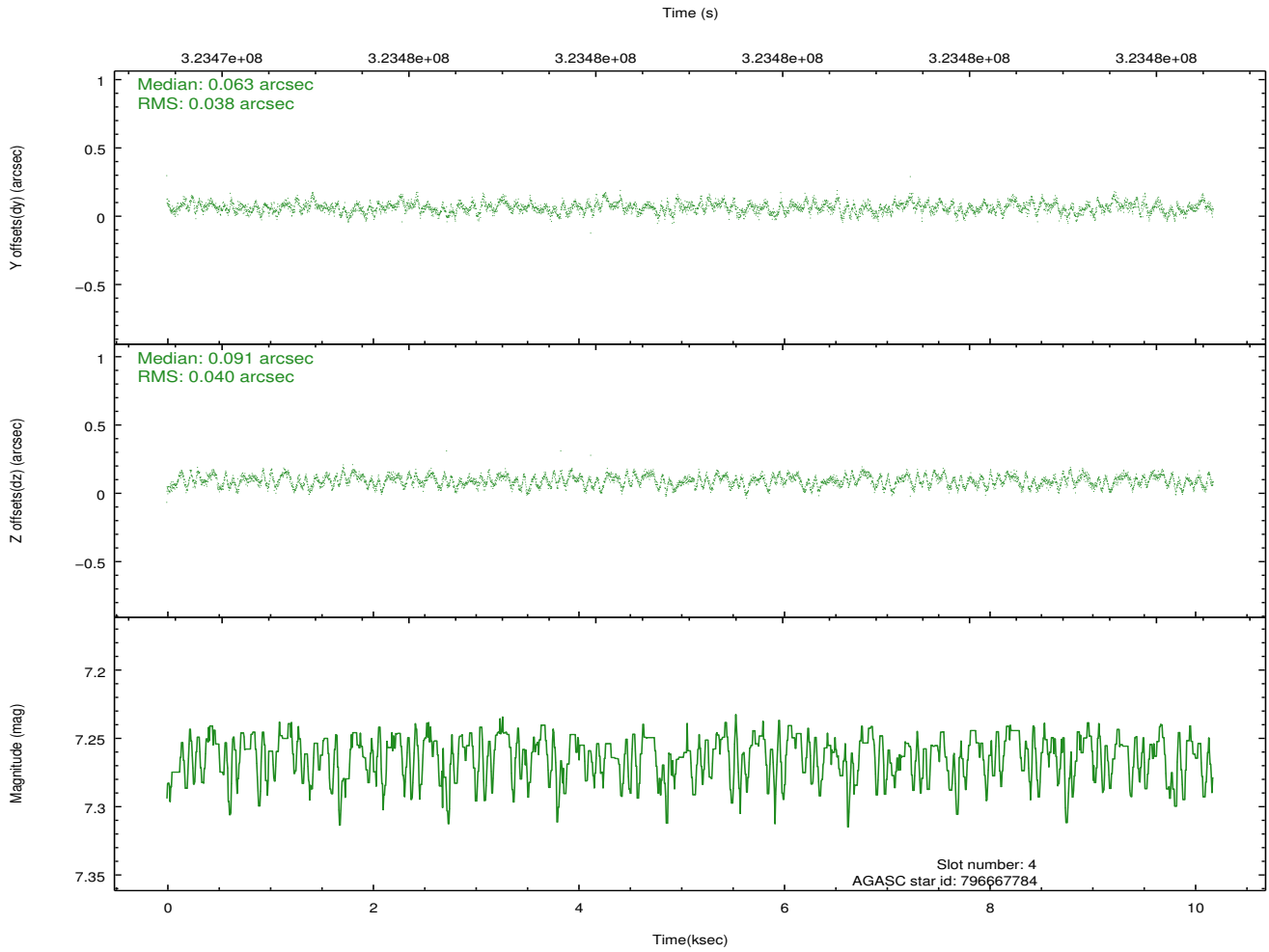
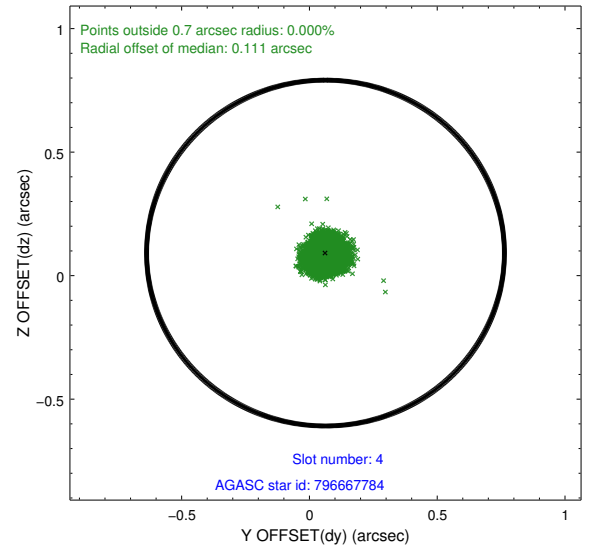
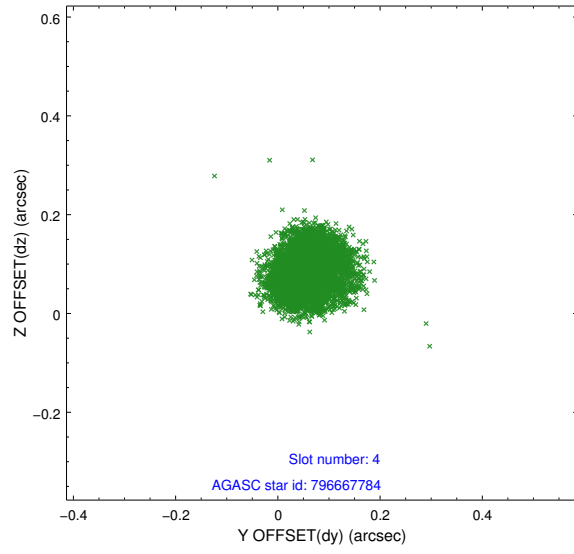
slot	status	id	mag	n_pts	med_dy	med_dz	dr1	dr2	ra	dec	mean_y	mean_z
0	FID	ACIS-S-1	7.17	2484	0.073	0.120	0.013	0.022	0.000000	0.000000	930.44	-1910.62
1	FID	ACIS-S-2	7.08	2484	-0.154	-0.095	0.008	0.016	0.000000	0.000000	-765.40	-1916.05
2	FID	ACIS-S-6	7.40	2483	0.060	-0.023	0.010	0.016	0.000000	0.000000	395.77	629.94
3	GUIDE	796665312	8.52	4966	0.089	0.187	0.074	0.119	161.477585	-19.650610	983.79	-2361.47
4	GUIDE	796667784	7.26	4967	0.063	0.091	0.060	0.091	161.636479	-18.873966	-1391.78	-791.64
5	GUIDE	796668584	8.80	4966	0.059	-0.113	0.077	0.123	162.089452	-19.228323	377.79	140.27
6	GUIDE	796670320	7.02	4968	0.051	0.187	0.069	0.104	161.619270	-19.760593	1533.28	-2069.62
7	GUIDE	796670624	9.27	4962	-0.261	-0.350	0.096	0.156	162.179958	-19.621119	1801.59	-122.82

2.4 Star Slots

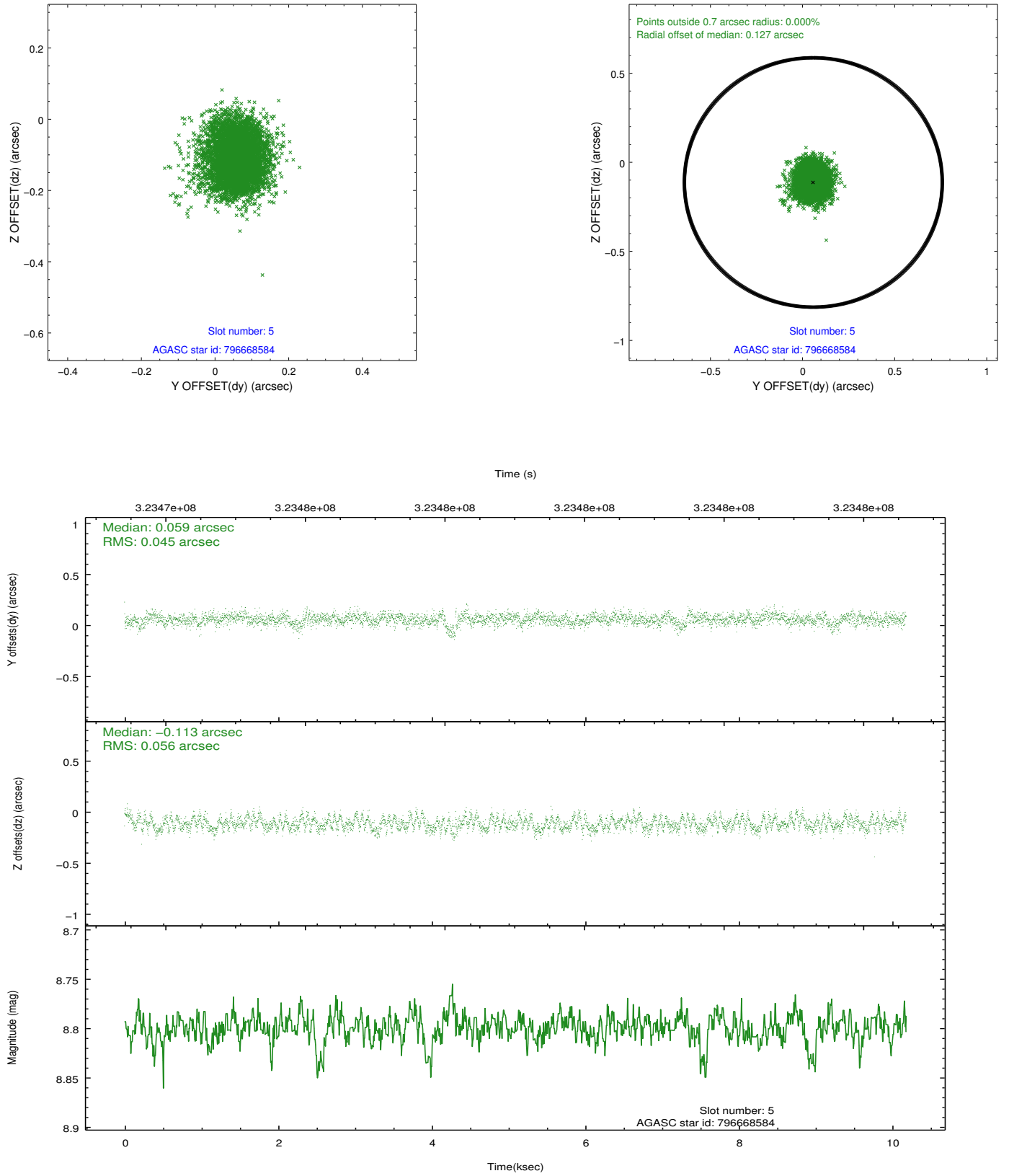
2.4.1 Slot 3



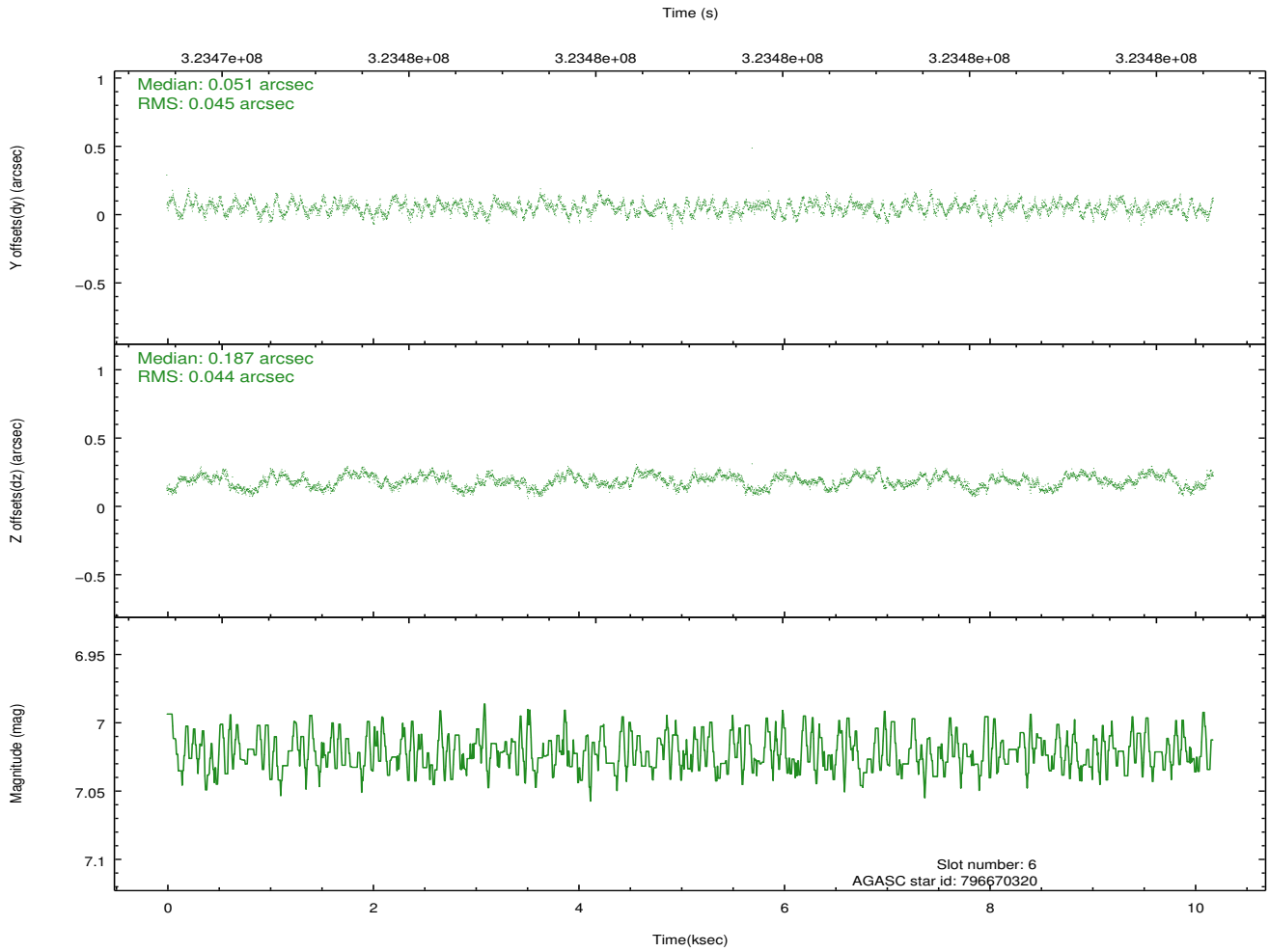
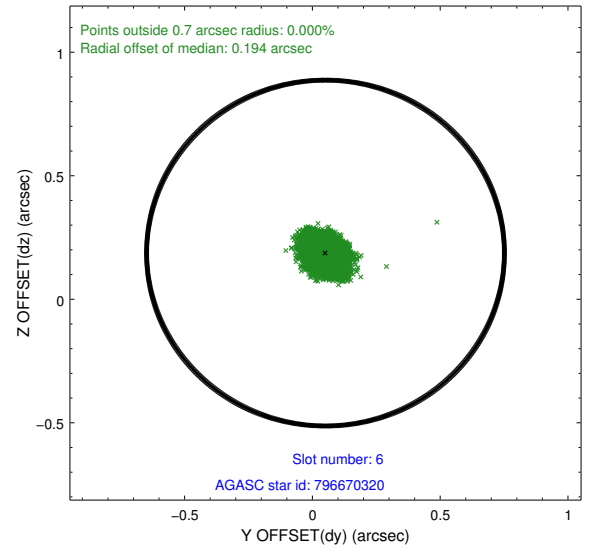
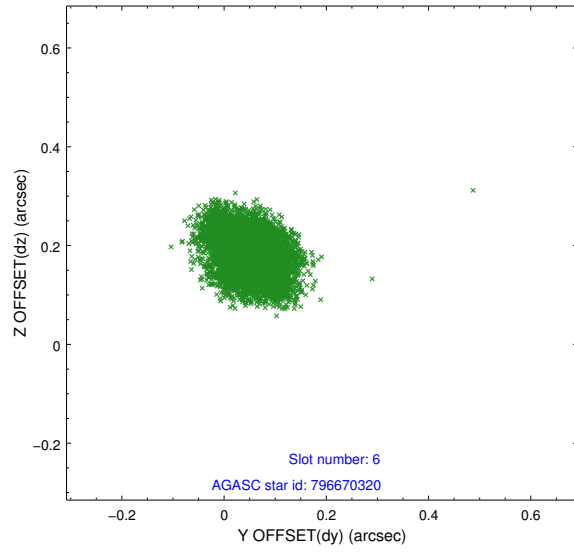
2.4.2 Slot 4



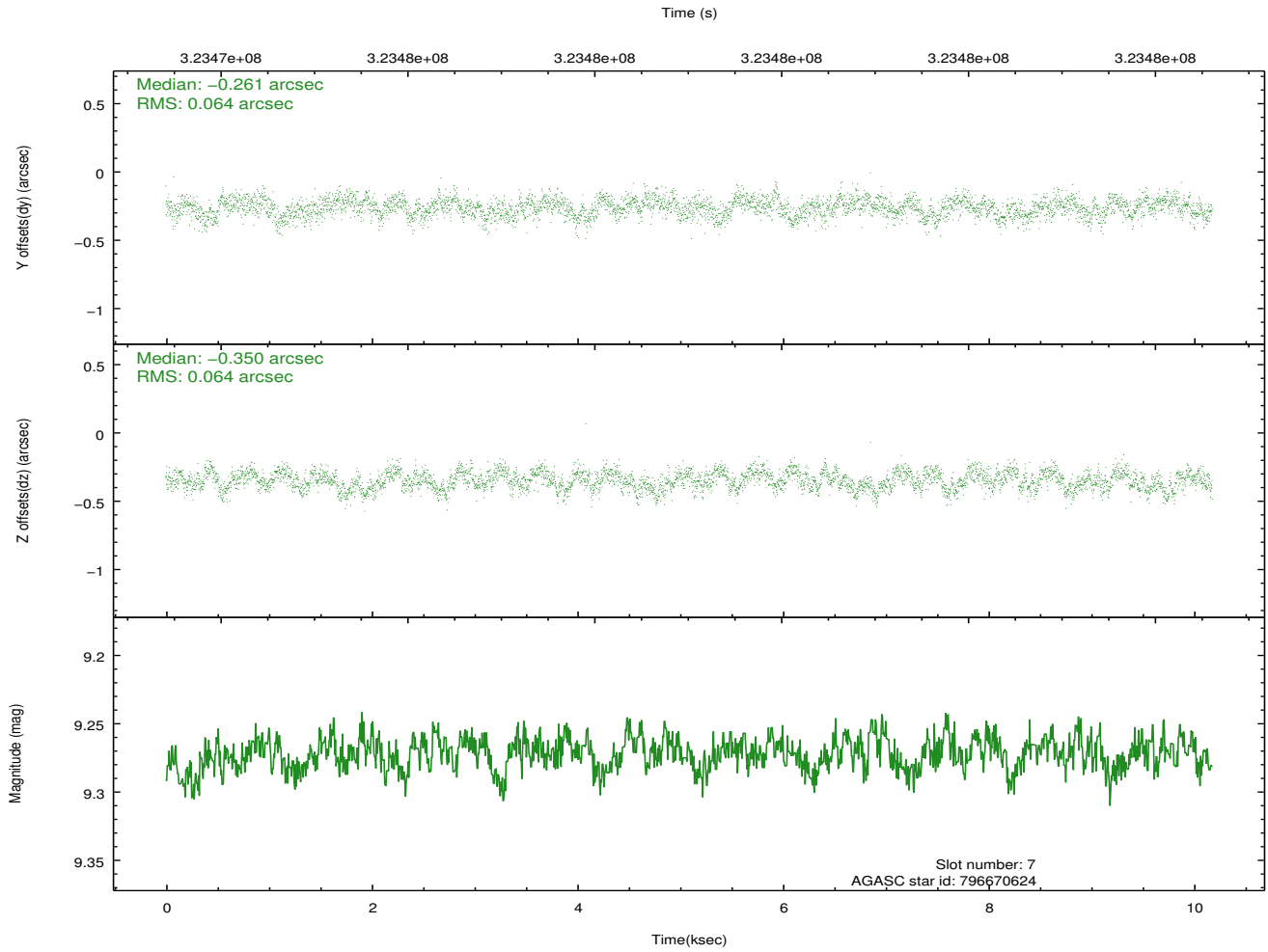
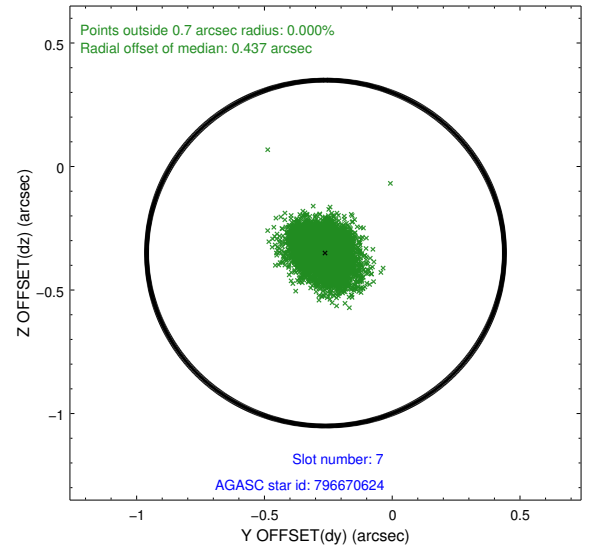
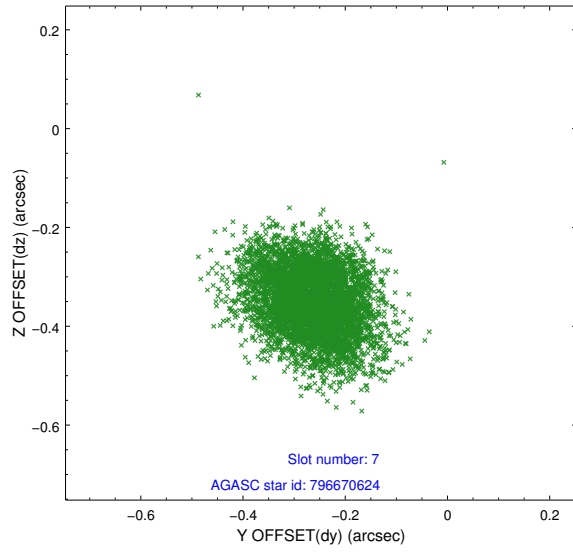
2.4.3 Slot 5



2.4.4 Slot 6

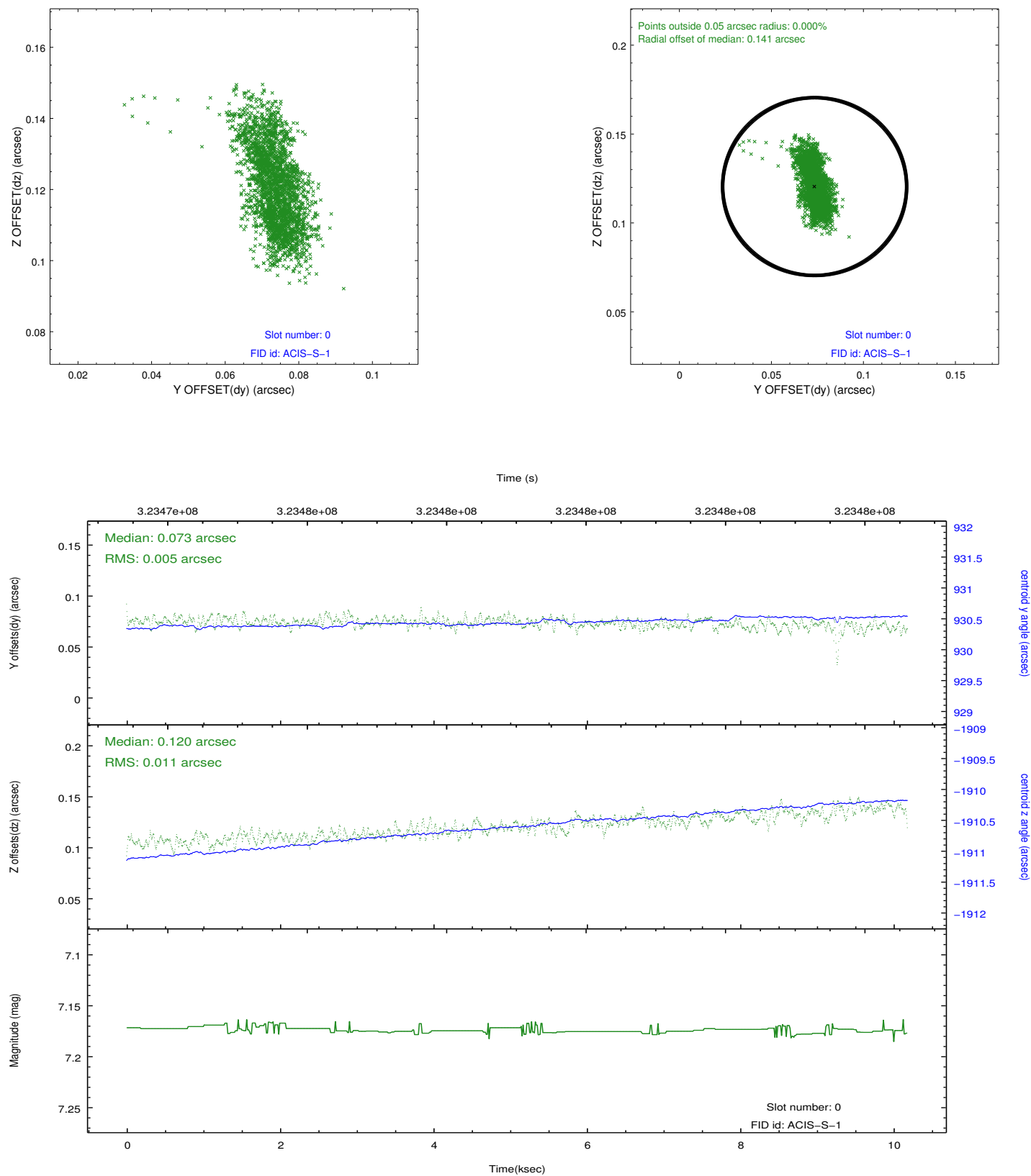


2.4.5 Slot 7

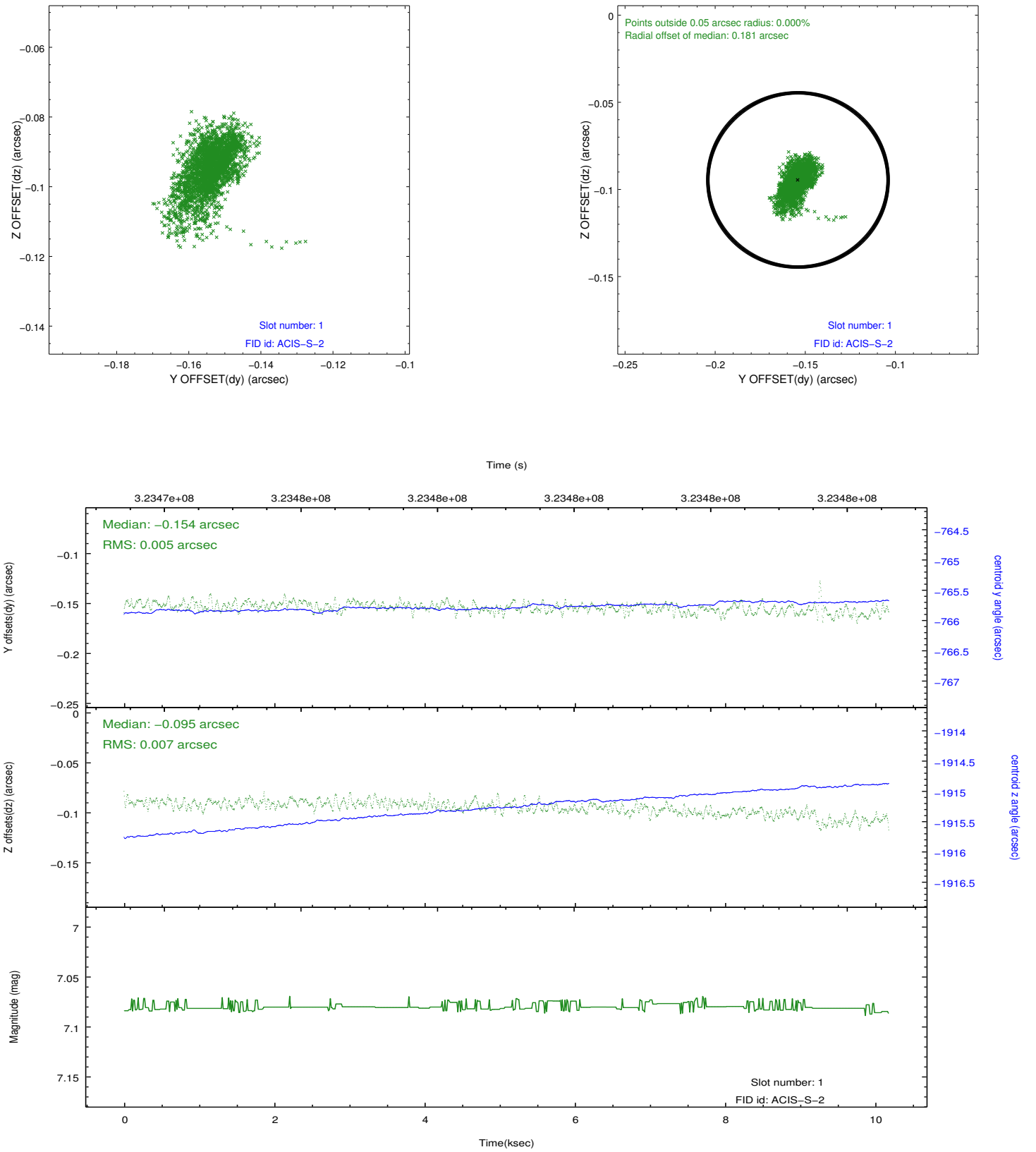


2.5 FID Slots

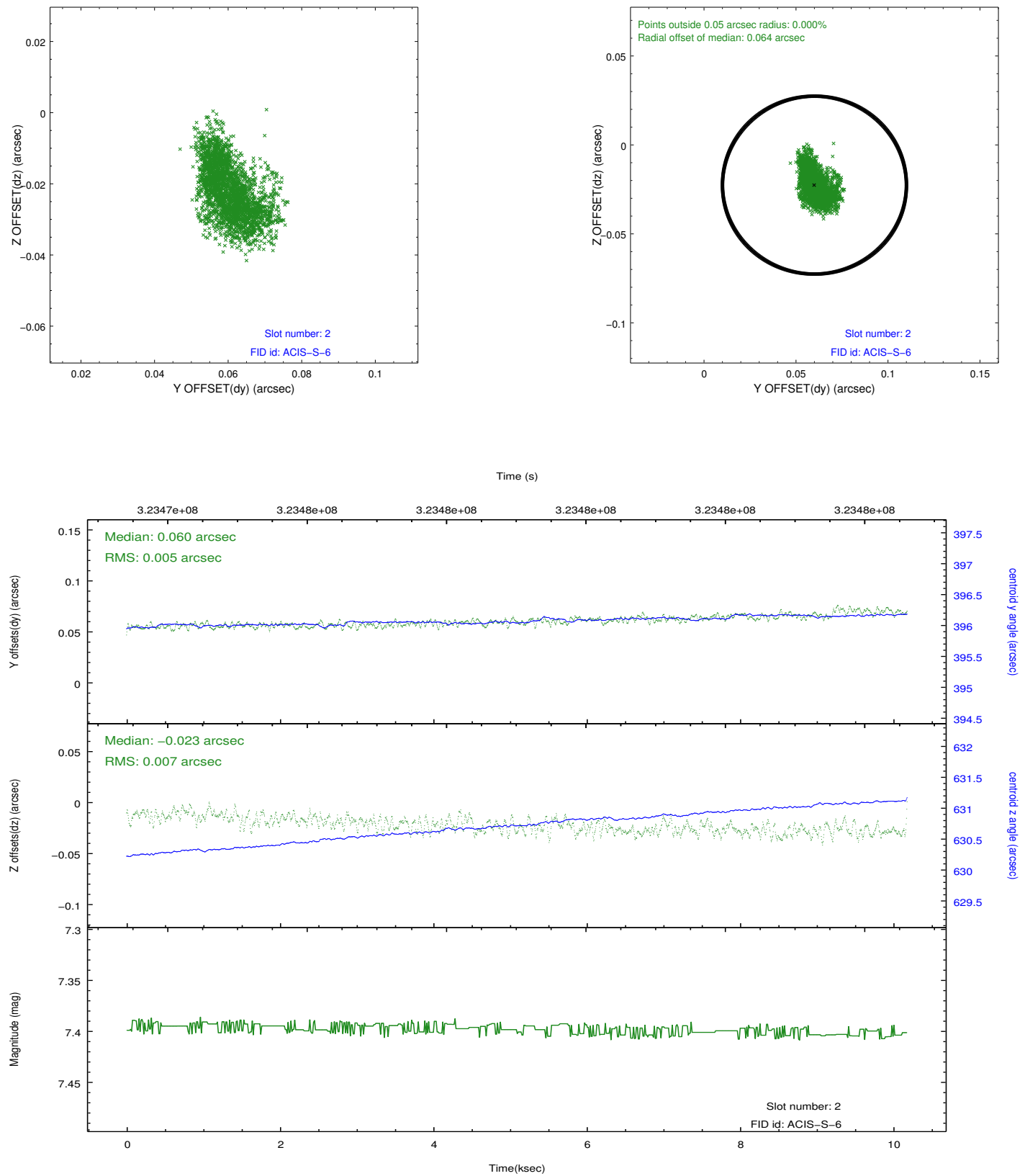
2.5.1 Slot 0



2.5.2 Slot 1



2.5.3 Slot 2



A Summary

A.1 Status

V&V Scientist	Jen Lauer
V&V Date (YYYY-MM-DD)	2012.05.15
V&V Edition	1
V&V Disposition and Status	OK
V&V Charge Time	10.1815993

A.2 Comments

Roll preference met.