

V&V Reference Report

L2 ASCDS Version : 7.6.10

Observation 920 - L2 Version 001
Chandra X-Ray Center

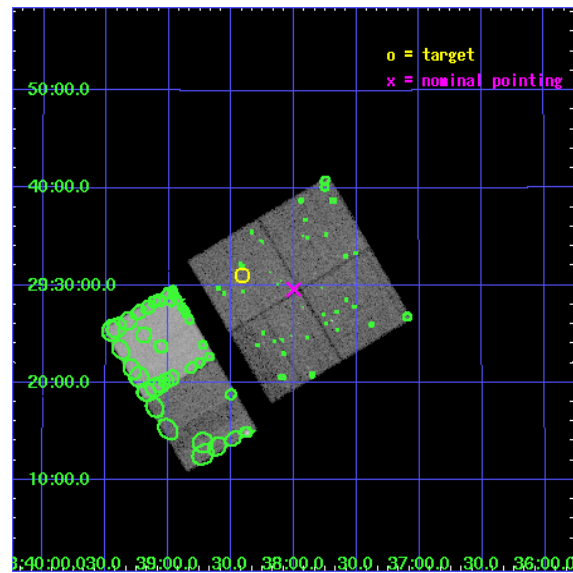
L2 Processing Date : May 27 2007

Contents

1	Front	2
2	OBI	3
2.1	OBI	3
2.1.1	Images	3
2.1.2	Bias	3
2.1.3	Parameters	4
2.1.4	Events	4
2.2	Compared Parameters	5
2.3	Aspect	6
2.4	Star Slots	9
2.4.1	Slot 3	9
2.4.2	Slot 4	10
2.4.3	Slot 5	11
2.4.4	Slot 6	12
2.4.5	Slot 7	13
2.5	FID Slots	14
2.5.1	Slot 0	14
2.5.2	Slot 1	15
2.5.3	Slot 2	16
3	Point Sources	17
A	Summary	18
A.1	Status	18
A.2	Comments	18

1 Front

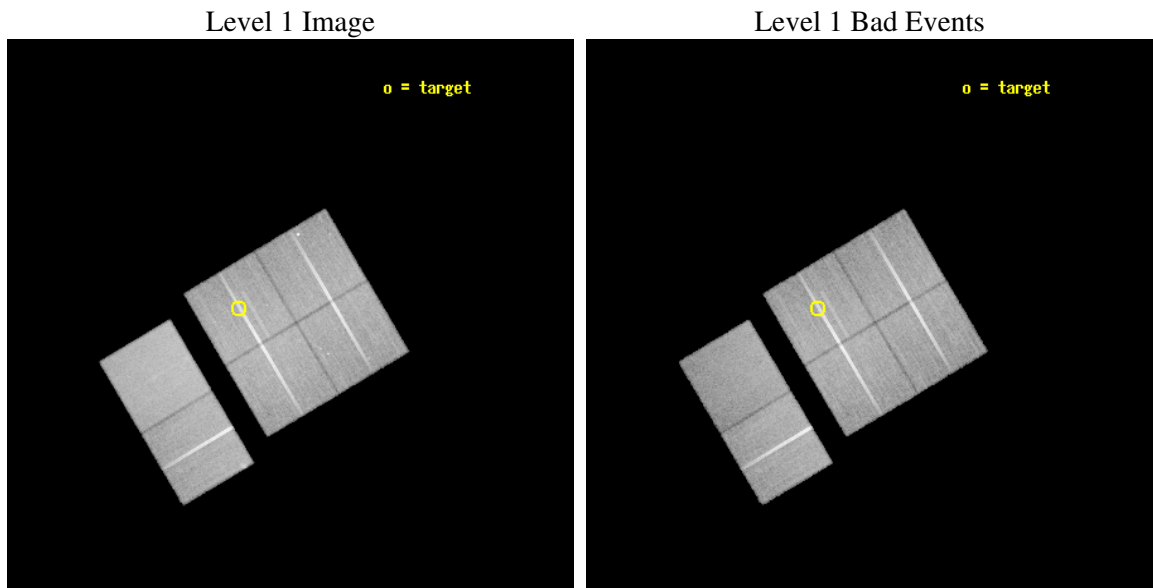
seq_num	800096
obs_id	920
title	BENT-DOUBLE RADIO GALAXIES: SIGNPOSTS FOR THE HIGH DENSITY UNIVERSE
observer	Prof. David Helfand
object	BD CLUSTER 1338
dtcycle	0
cycle	P
ra_targ	204.60375
dec_targ	29.518056
ra_nom	204.50011895343
dec_nom	29.493503355096
roll_nom	239.31770643803
revision	3
ontime	38127.836254433
livetime	37645.038633952
ontime0	38131.077094972
ontime1	38137.559075281
ontime2	38127.836204574
ontime3	38127.836254433
ontime6	38134.318085119
ontime7	38137.559075281
l2events	270467



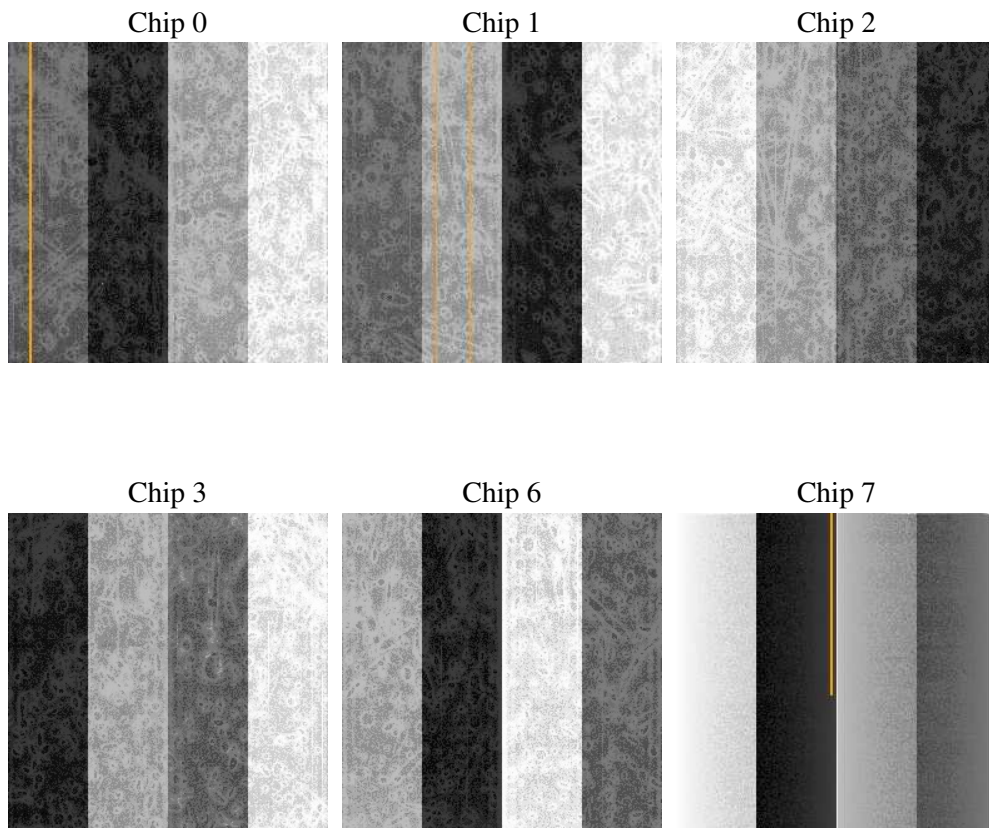
2 OBI

2.1 OBI

2.1.1 Images



2.1.2 Bias



2.1.3 Parameters

obi_num	0
ascdsver	7.6.10
caldsver	3.4.0
date	2007-05-27T10:42:33
revision	3

sched_exp_time	38190.000000
ontime	38127.836254433
ontime0	38131.077094972
ontime1	38137.559075281
ontime2	38127.836204574
ontime3	38127.836254433
ontime6	38134.318085119
ontime7	38137.559075281
l1events	1540426

2.1.4 Events

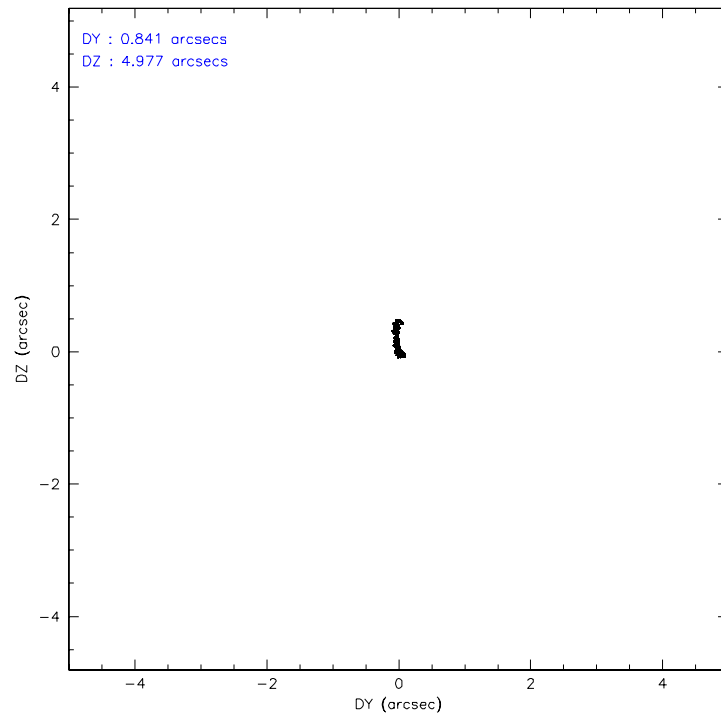
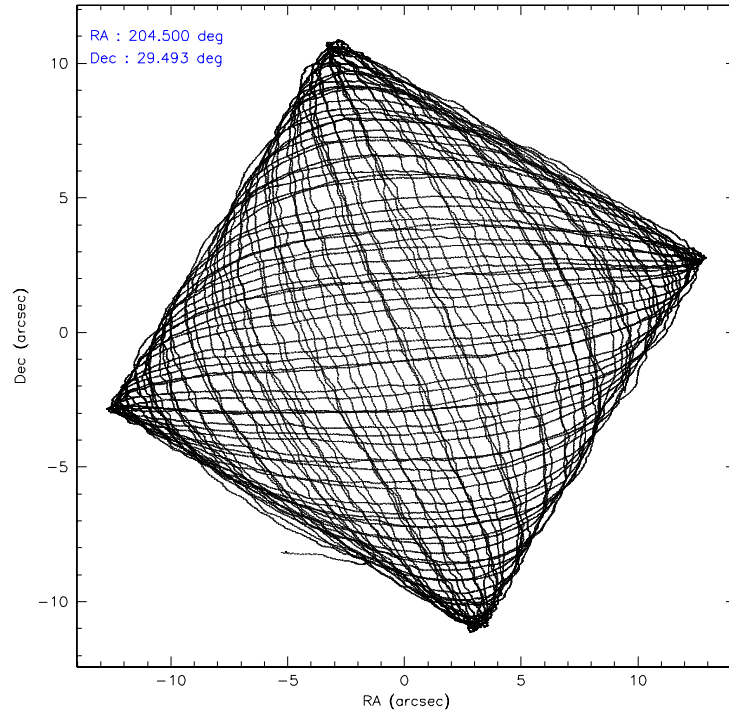
	ccd 0	ccd 1	ccd 2	ccd 3	ccd 6	ccd 7
level 1 events	234787	235573	255680	256119	259880	298387
rejected events	201413	199697	224673	223656	226613	167552
rejected %	85%	84%	87%	87%	87%	56%

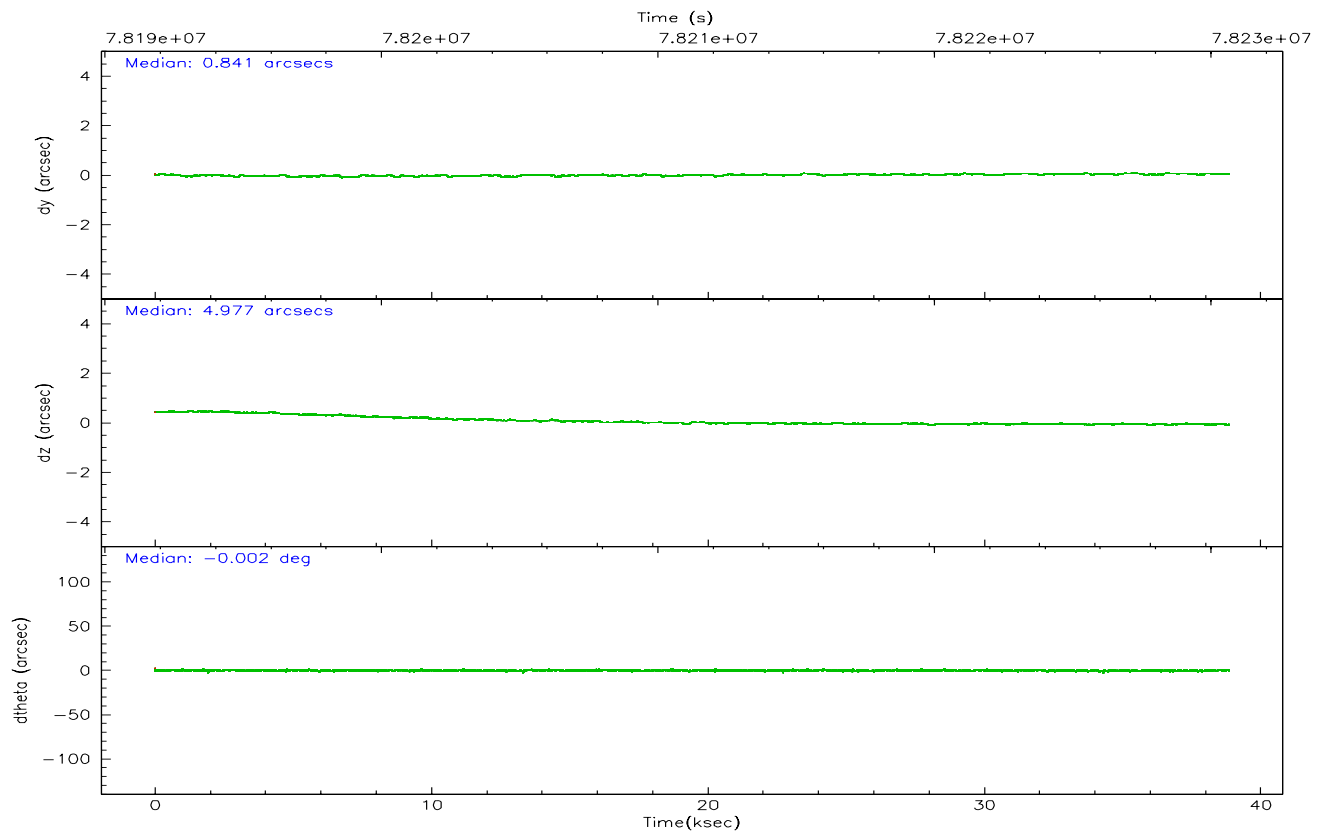
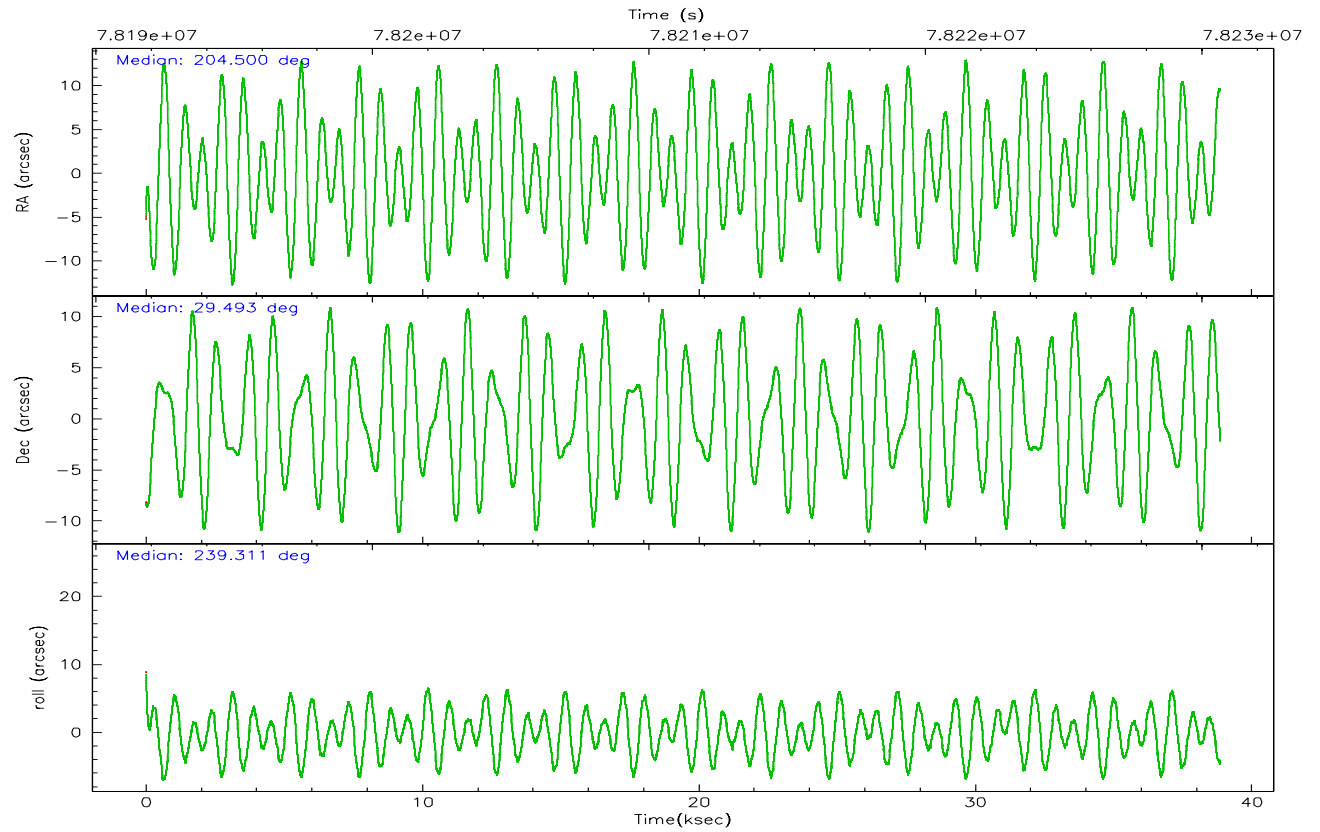
	ccd 0	ccd 1	ccd 2	ccd 3	ccd 6	ccd 7
grade 0 events	14853	15940	13781	14581	14713	13109
	6%	6%	5%	5%	5%	4%
grade 1 events	110	117	128	115	124	306
	0%	0%	0%	0%	0%	0%
grade 2 events	7282	7549	6653	7009	6984	25414
	3%	3%	2%	2%	2%	8%
grade 3 events	2928	3202	2621	2642	2906	12055
	1%	1%	1%	1%	1%	4%
grade 4 events	2727	3080	2725	2739	2798	11881
	1%	1%	1%	1%	1%	3%
grade 5 events	8145	8525	7713	8402	9606	27909
	3%	3%	3%	3%	3%	9%
grade 6 events	5594	6106	5229	5493	5872	68384
	2%	2%	2%	2%	2%	22%
grade 7 events	193148	191054	216830	215138	216877	139329
	82%	81%	84%	83%	83%	46%

2.2 Compared Parameters

Parameter	Planned	Actual	Parameter	Planned	Actual
Instrument	ACIS	ACIS	Obspar format version number	6	6
Detector	ACIS-012367	ACIS-012367	Obspar file type	PREDICTED	ACTUAL
Grating	NONE	NONE	Obspar update status	NONE	UPDATED
Data mode	VFAINT	VFAINT	Number of optional ACIS chips dropped	0	0
Observation mode	POINTING	POINTING	On-chip summing requested	N	N
Pointing RA	204.500670	204.5001189534332	Subarray requested	NONE	NONE
Pointing Dec	29.521062	29.49350335509563	Alternating exposures requested	N	N
Pointing Roll	239.108751	239.3177064380286	Primary exposure time	3.200000	3.2
SIM focus pos (mm)	-0.782348	-0.7809083437167272			
SIM defocus (mm)	0	0.001439871863259334			
SIM translation stage pos (mm)	-233.592463	-233.5899487761303			
SIM translation stage offset (mm)	0	-0.002504226799430853			
Observation start time	78192473.184000	78191274.85492399			
Observation start date	2000-06-24T00:06:49	2000-06-23T23:47:54			
Observation end time	78230663.184000	78230999.243889			
Observation end date	2000-06-24T10:43:19	2000-06-24T10:49:59			
Read mode	TIMED	TIMED			

2.3 Aspect



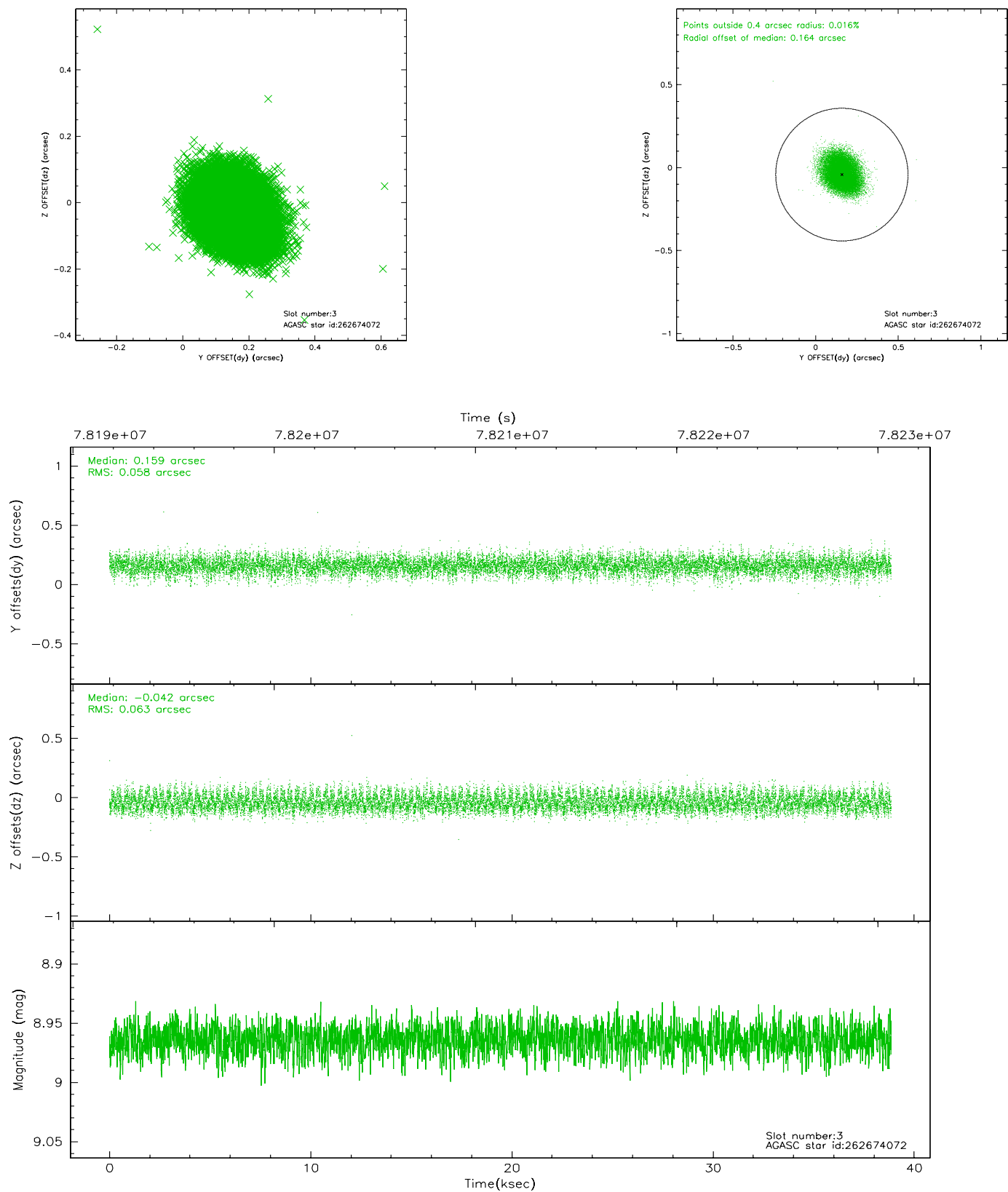


Slot Statistics

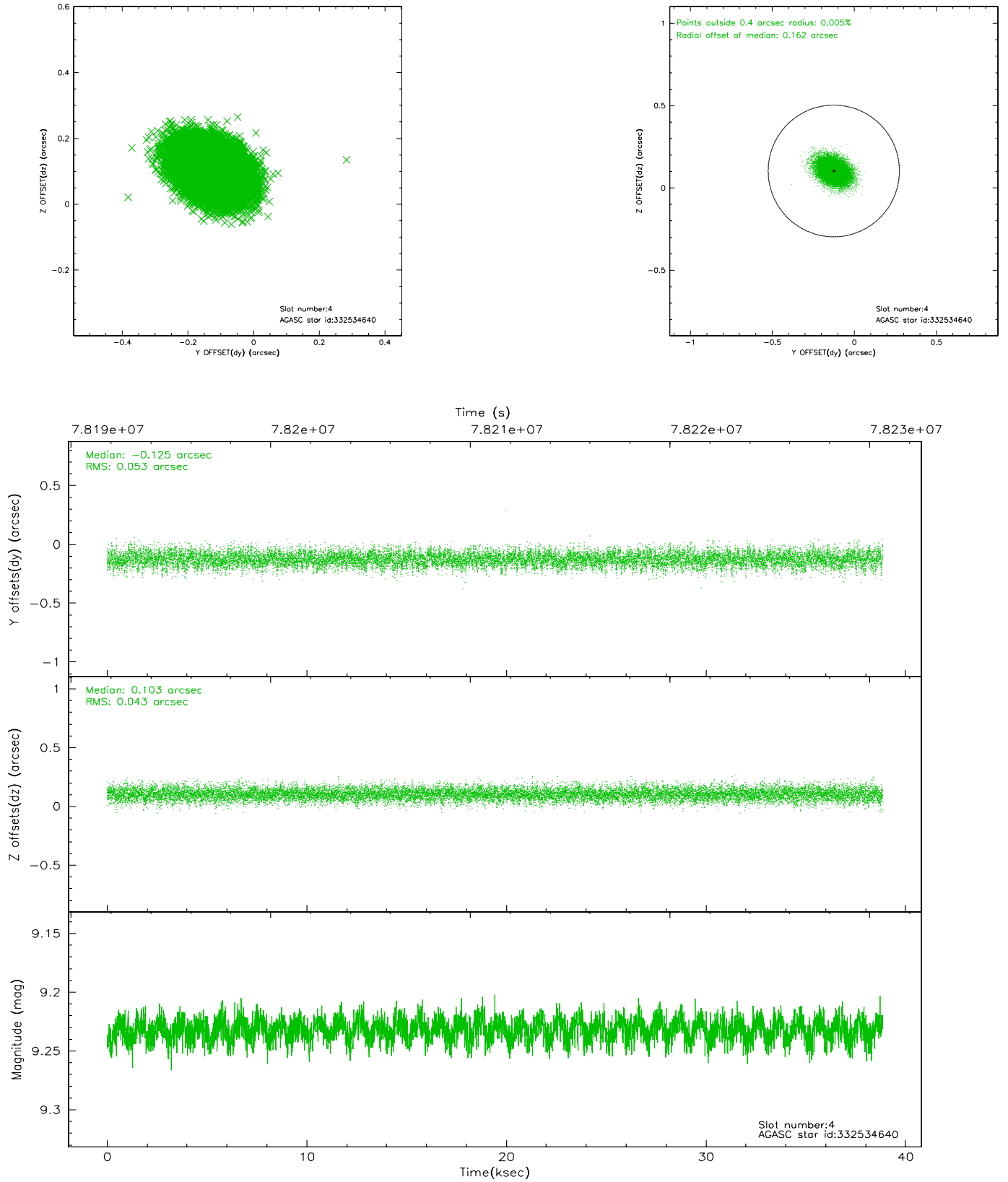
slot	status	id	mag	n_pts	med_dy	med_dz	dr1	dr2	ra	dec	mean_y	mean_z
0	FID	ACIS-I-2	7.15	9475	-0.017	-0.006	0.009	0.016	0.000000	0.000000	-755.18	-834.72
1	FID	ACIS-I-4	7.19	9474	-0.080	0.021	0.006	0.011	0.000000	0.000000	2158.81	1071.47
2	FID	ACIS-I-5	7.23	9476	-0.004	0.053	0.009	0.015	0.000000	0.000000	-1808.96	1069.37
3	GUIDE	262674072	8.96	18945	0.159	-0.042	0.091	0.144	203.817723	29.134613	2290.84	-1130.93
4	GUIDE	332534640	9.23	18942	-0.125	0.103	0.072	0.120	204.798572	30.031451	-2054.97	-146.62
5	GUIDE	262671000	9.99	18929	0.078	-0.124	0.108	0.181	203.991182	29.621604	504.64	-1555.21
6	GUIDE	262676648	8.48	18950	0.004	-0.021	0.094	0.149	205.067150	29.027569	604.61	2440.85
7	GUIDE	262673904	9.66	18944	-0.115	0.078	0.106	0.176	205.387915	29.658787	-1860.48	2122.65

2.4 Star Slots

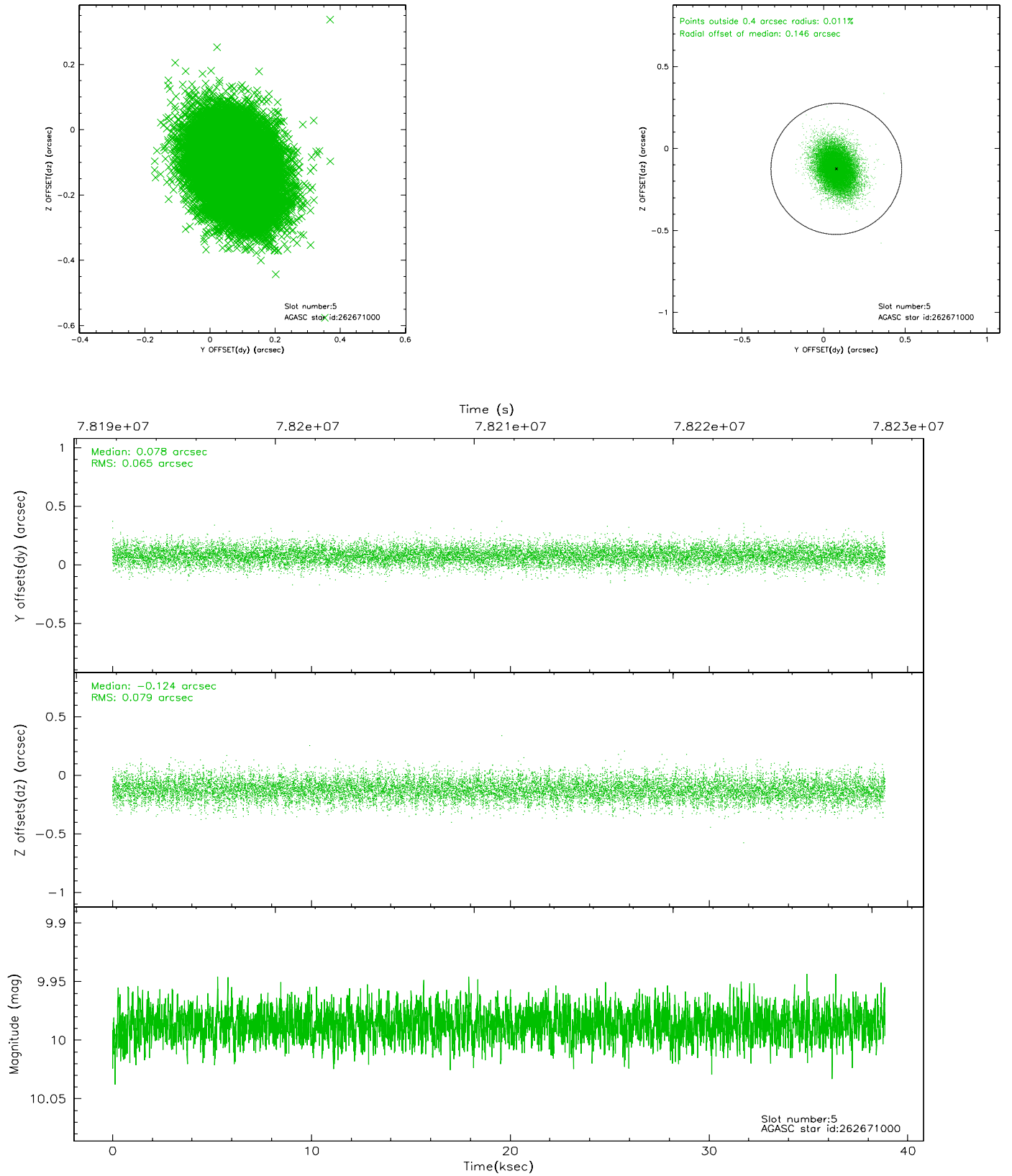
2.4.1 Slot 3



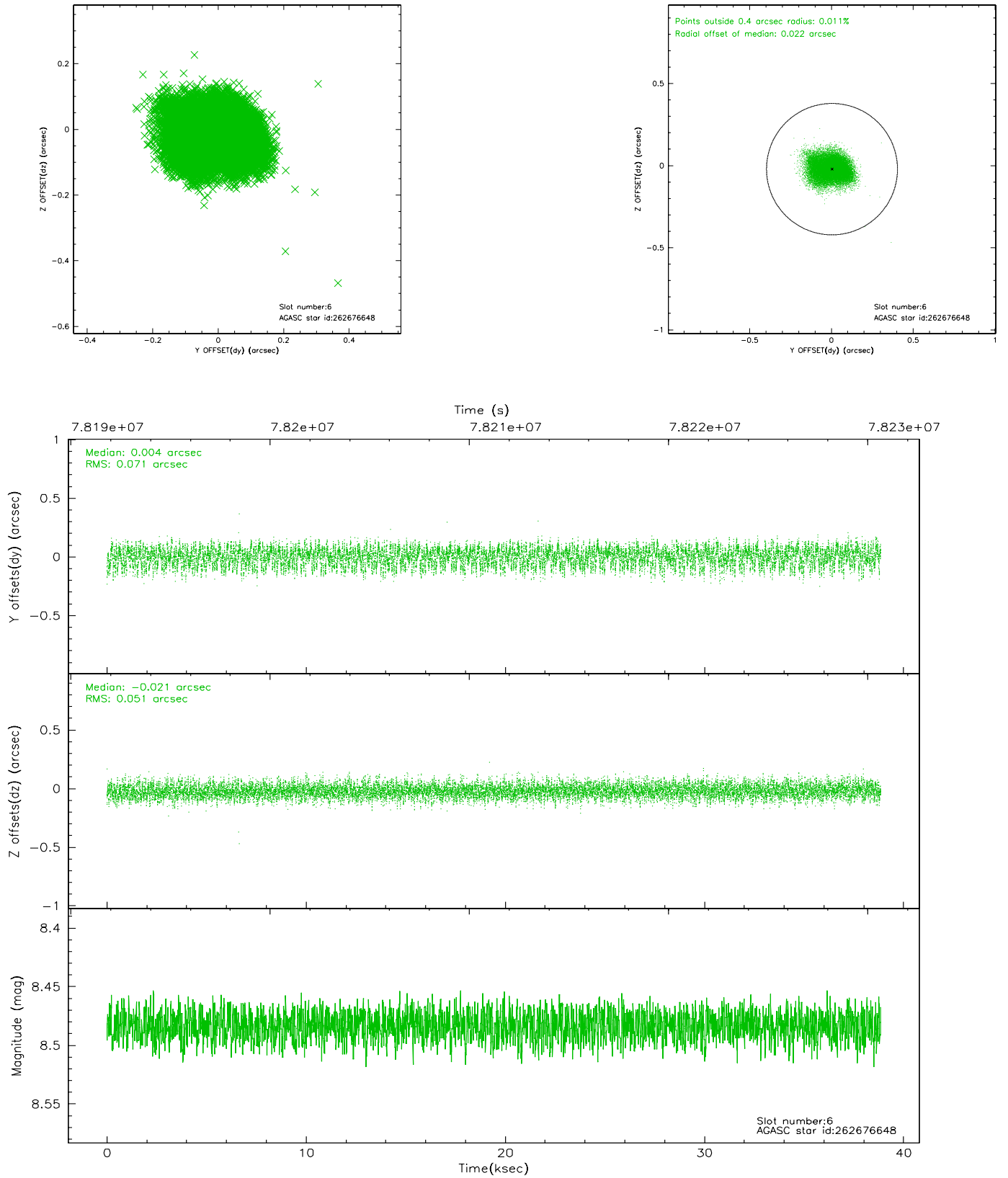
2.4.2 Slot 4



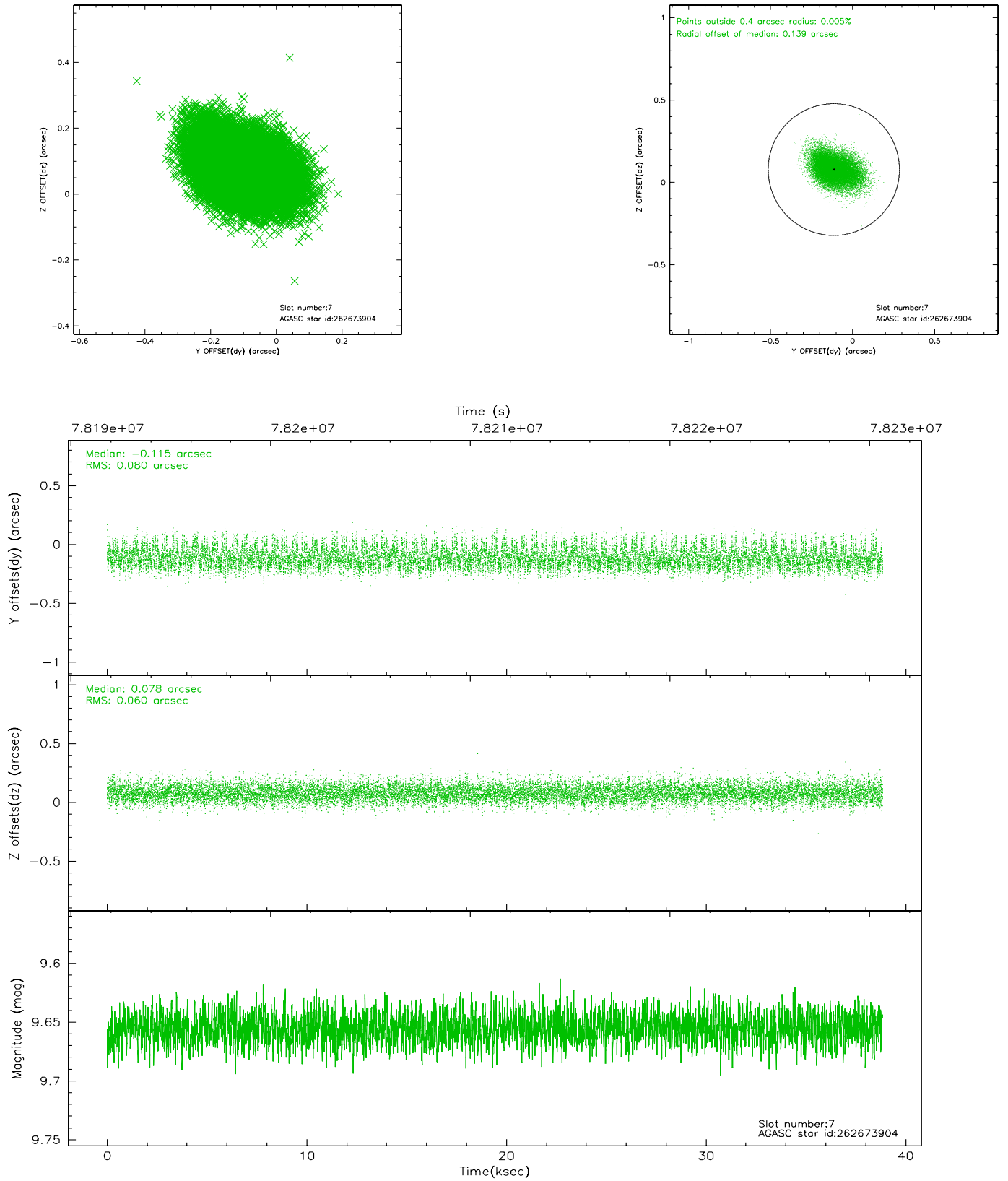
2.4.3 Slot 5



2.4.4 Slot 6

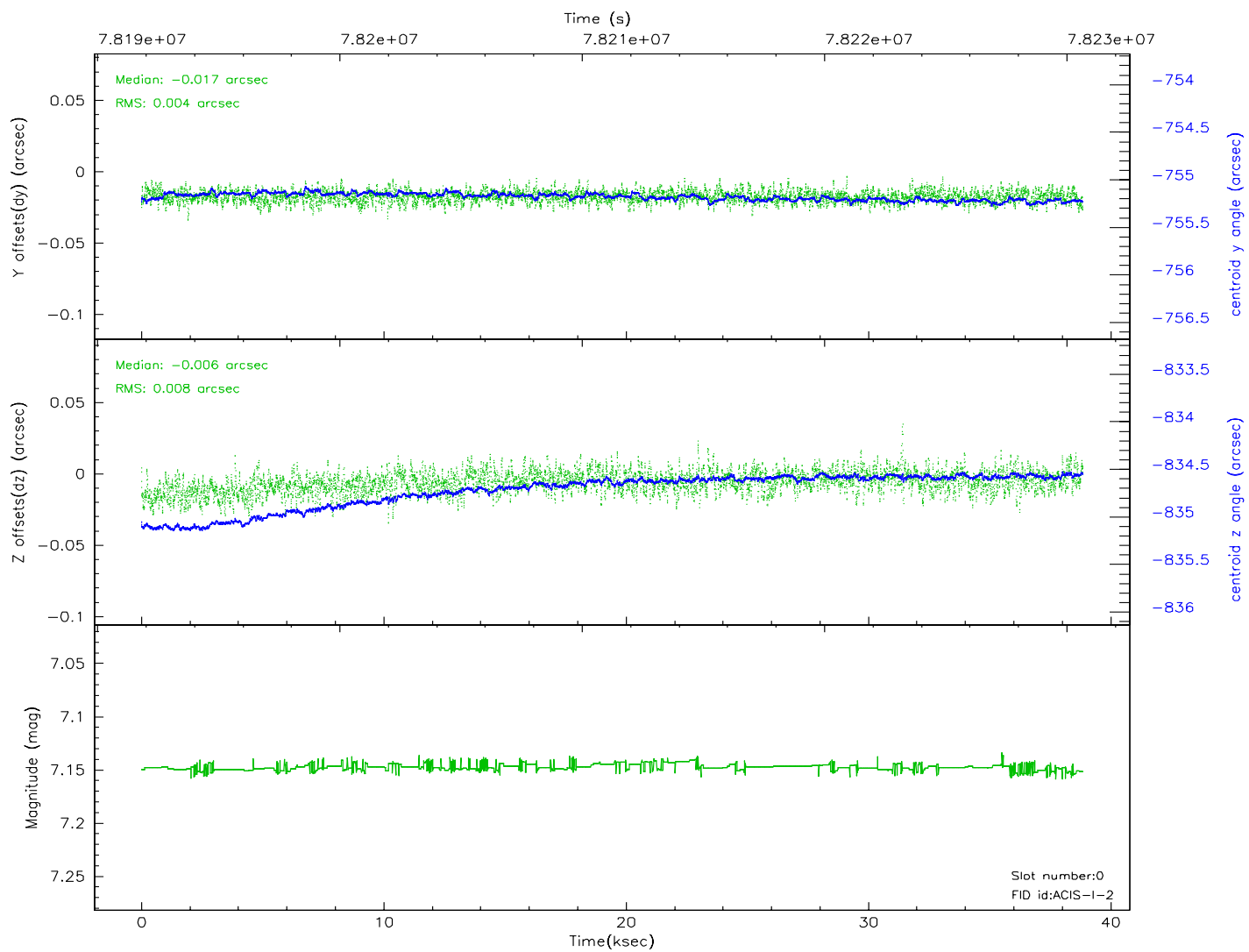
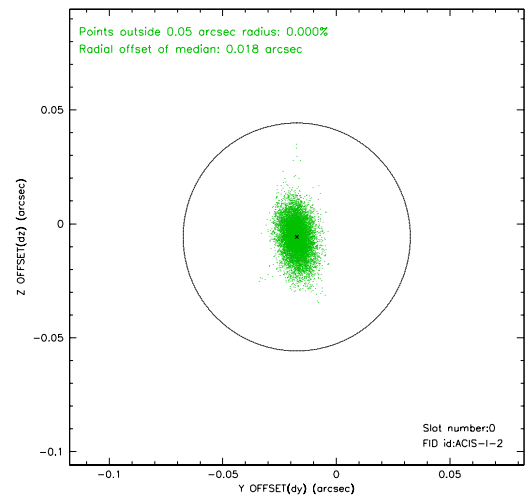
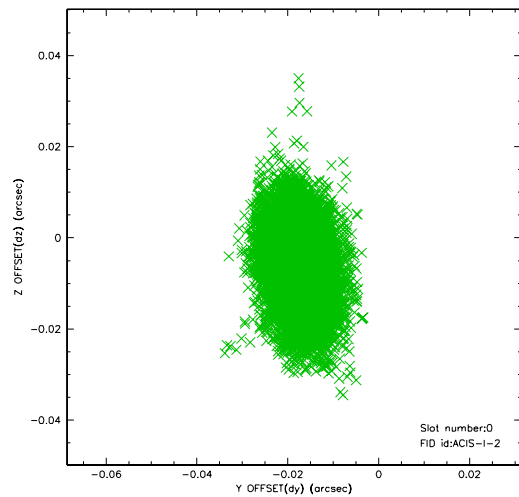


2.4.5 Slot 7

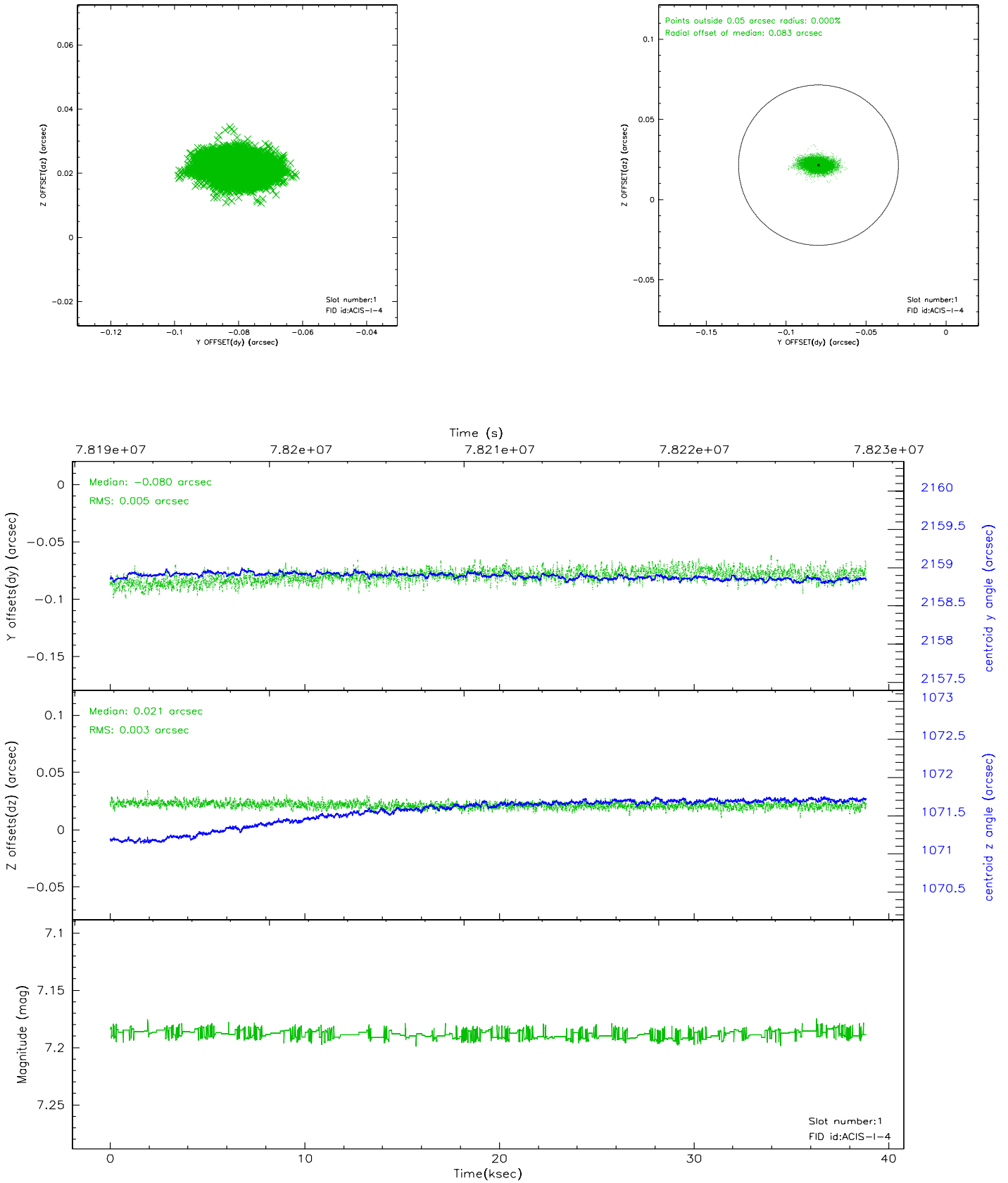


2.5 FID Slots

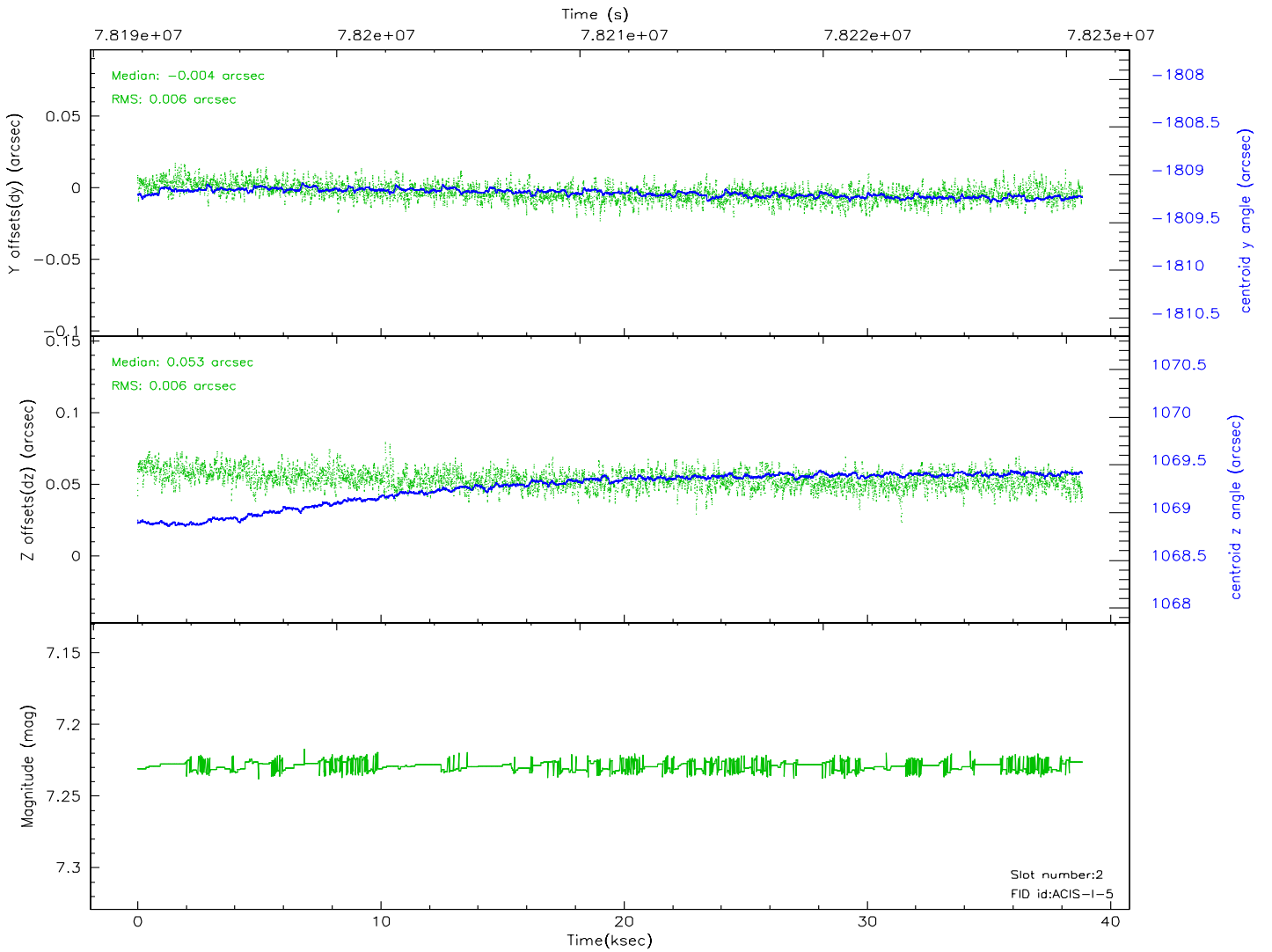
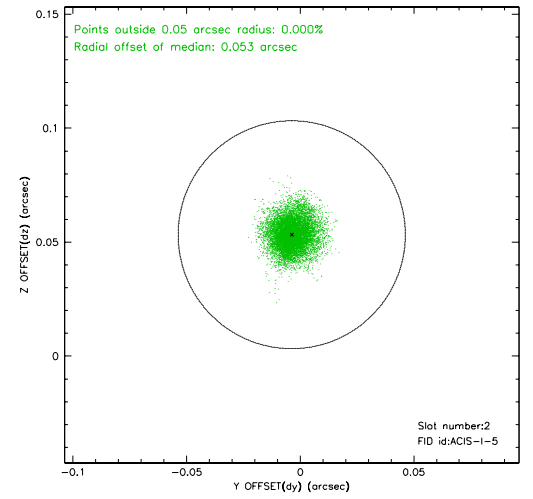
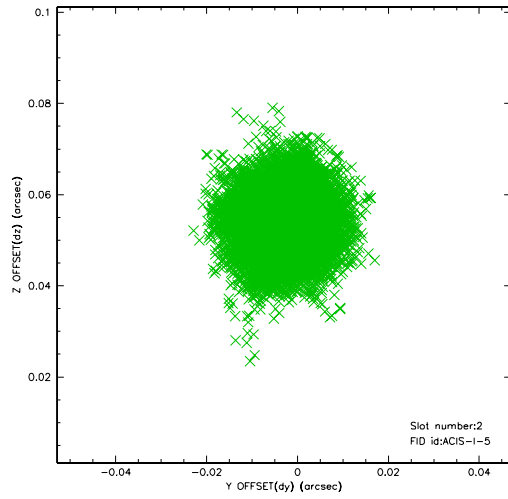
2.5.1 Slot 0



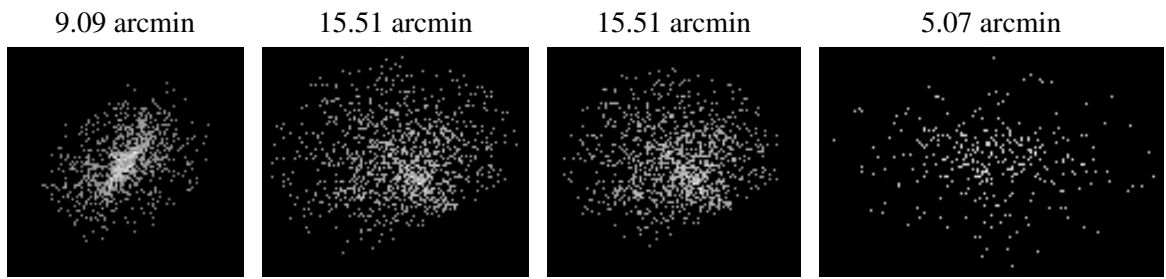
2.5.2 Slot 1



2.5.3 Slot 2



3 Point Sources



A Summary

A.1 Status

V&V Scientist	Jen Lauer
V&V Date (YYYY-MM-DD)	2007.05.27
V&V Edition	1
V&V Disposition and Status	OK
V&V Charge Time	38.134

A.2 Comments