

V&V Reference Report

L2 ASCDS Version : 8.4.4

Observation 8640 - L2 Version 2
Chandra X-Ray Center

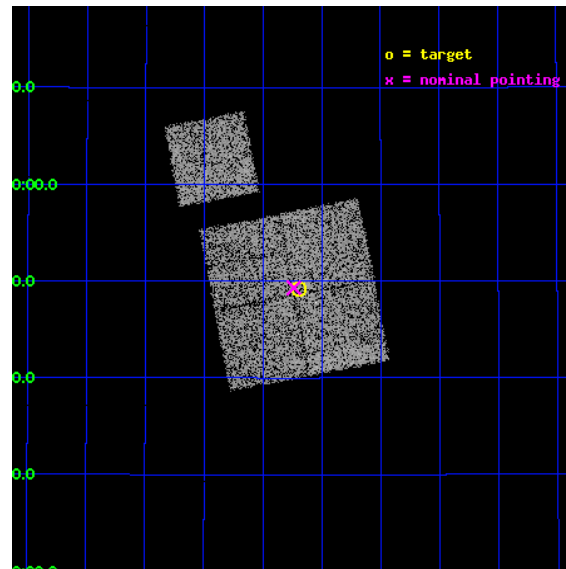
L2 Processing Date : May 5 2012

Contents

1	Front	2
2	OBI	3
2.1	OBI	3
2.1.1	Images	3
2.1.2	Bias	3
2.1.3	Parameters	4
2.1.4	Events	4
2.2	Compared Parameters	5
2.3	Aspect	6
2.4	Star Slots	9
2.4.1	Slot 3	9
2.4.2	Slot 4	10
2.4.3	Slot 5	11
2.4.4	Slot 6	12
2.4.5	Slot 7	13
2.5	FID Slots	14
2.5.1	Slot 0	14
2.5.2	Slot 1	15
2.5.3	Slot 2	16
A	Summary	17
A.1	Status	17
A.2	Comments	17

1 Front

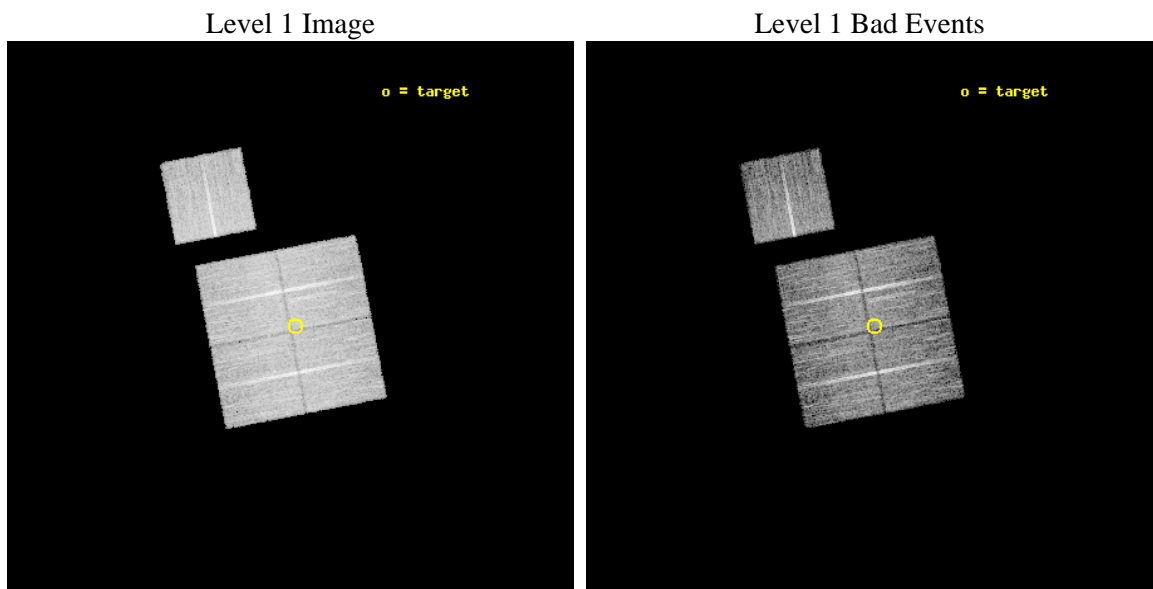
seq_num	900777	Sequence number
obs_id	8640	Observation id
title	Chandra Observations of the DEEP2 Fields	Proposal title
observer	Dr. Stephen Murray	Principal investigator
object	DEEP2 Field 2	Source name
dtcycle	0	
cycle	P	events from which exps? Prim/Second/Both
ra_targ	252.29954	Observer's specified target RA [deg]
dec_targ	34.820972	Observer's specified target Dec [deg]
ra_nom	252.3093097834	Nominal RA [deg]
dec_nom	34.821883132982	Nominal Dec [deg]
roll_nom	349.10305936588	Nominal Roll [deg]
revision	2	Processing version of data
ontime	8723.400067091	Sum of GTIs [s]
livetime	8609.4224231407	Livetime [s]
ontime0	8723.400067091	Sum of GTIs [s]
ontime1	8723.400067091	Sum of GTIs [s]
ontime2	8723.400067091	Sum of GTIs [s]
ontime3	8723.400067091	Sum of GTIs [s]
ontime6	8723.400067091	Sum of GTIs [s]
l2events	29212	Number of level 2 events



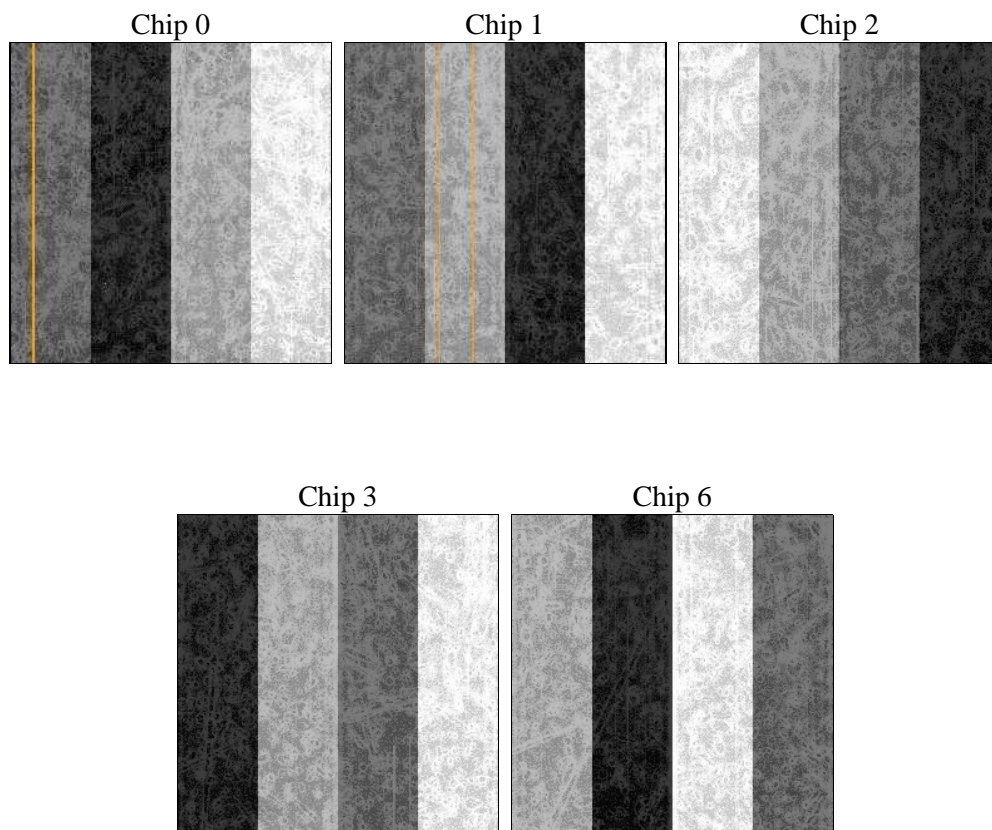
2 OBI

2.1 OBI

2.1.1 Images



2.1.2 Bias



2.1.3 Parameters

obi_num	0	Obi number	sched_exp_time	8946.000000	[s] Scheduled observation exposure time
ascdsver	8.4.4	Processing system revision	ontime	8723.400067091	Sum of GTIs [s]
caldsver	4.4.9	 	ontime0	8723.400067091	Sum of GTIs [s]
date	2012-05-05T05:15:35	Date and time of file creation	ontime1	8723.400067091	Sum of GTIs [s]
revision	2	Processing version of data	ontime2	8723.400067091	Sum of GTIs [s]
			ontime3	8723.400067091	Sum of GTIs [s]
			ontime6	8723.400067091	Sum of GTIs [s]
			l1events	342619	Number of level 1 events

2.1.4 Events

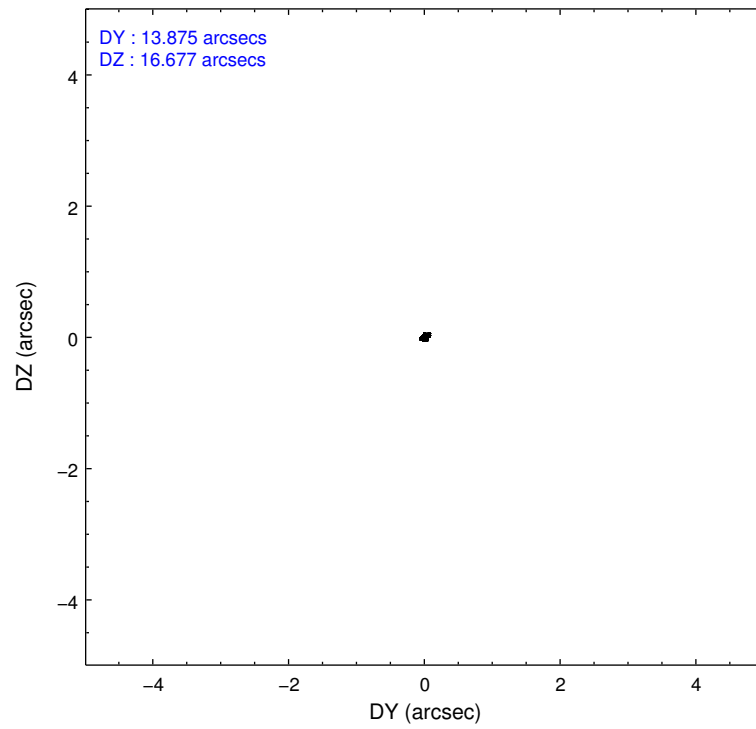
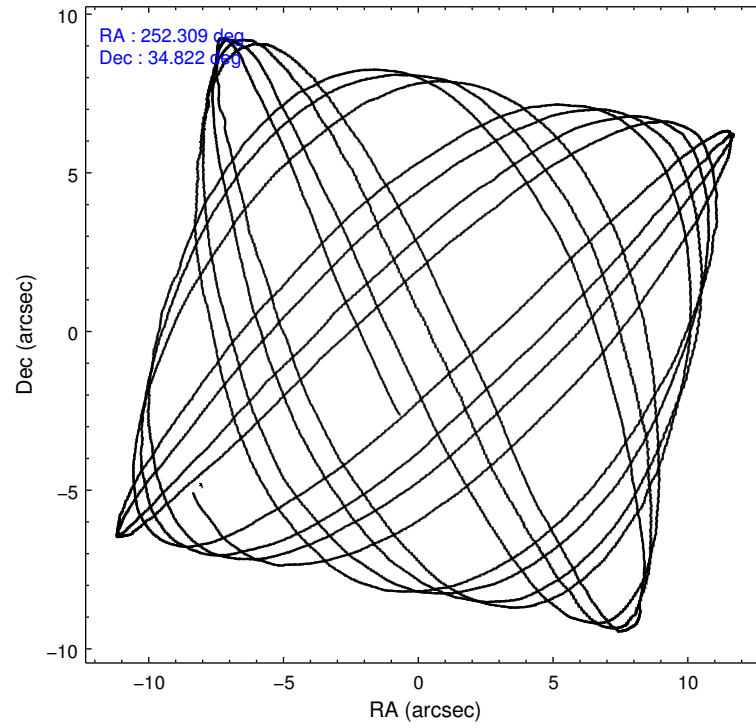
	ccd 0	ccd 1	ccd 2	ccd 3	ccd 6
level 1 events	66608	64171	72750	69264	69826
rejected events	59547	56385	65900	62582	62775
rejected %	89%	87%	90%	90%	89%

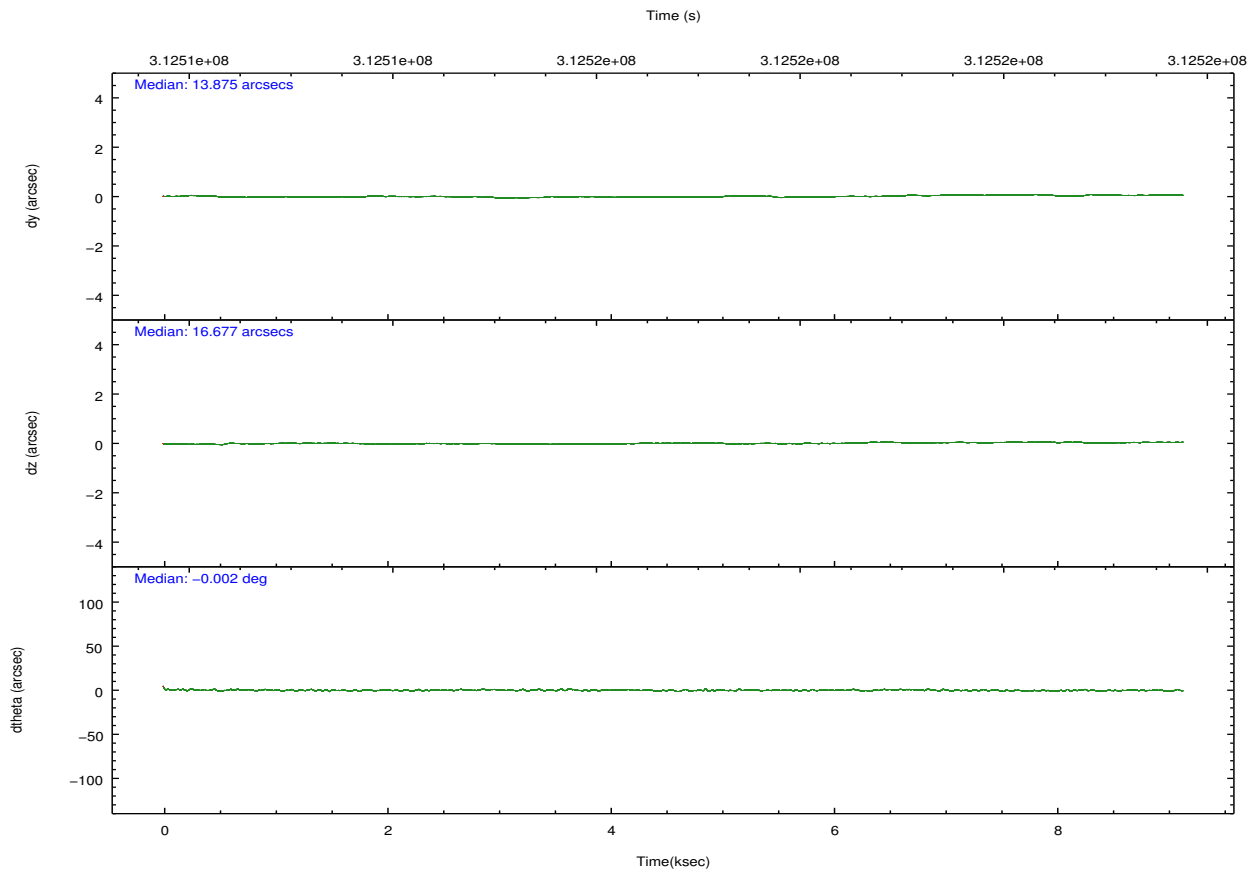
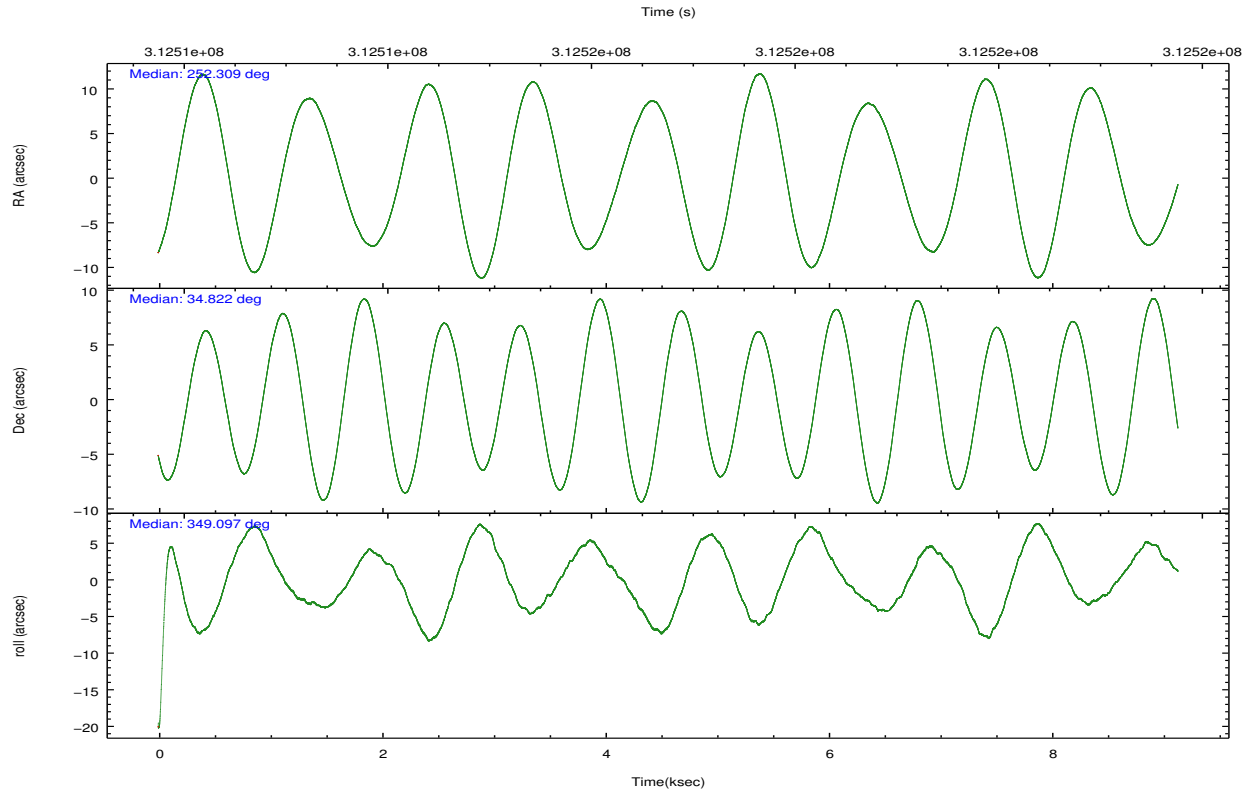
	ccd 0	ccd 1	ccd 2	ccd 3	ccd 6
grade 0 events	2532	2829	2432	2331	2422
	3%	4%	3%	3%	3%
grade 1 events	28	30	39	36	41
	0%	0%	0%	0%	0%
grade 2 events	1684	1708	1637	1515	1541
	2%	2%	2%	2%	2%
grade 3 events	755	853	715	732	815
	1%	1%	0%	1%	1%
grade 4 events	749	851	756	716	751
	1%	1%	1%	1%	1%
grade 5 events	2480	2731	2370	2796	2774
	3%	4%	3%	4%	3%
grade 6 events	1349	1550	1313	1393	1528
	2%	2%	1%	2%	2%
grade 7 events	57031	53619	63488	59745	59954
	85%	83%	87%	86%	85%

2.2 Compared Parameters

Parameter	Planned	Actual	Parameter	Planned	Actual
Instrument	ACIS	ACIS	Obspar format version number	7	7
Detector	ACIS-01236	ACIS-01236	Obspar file type	PREDICTED	ACTUAL
Grating	NONE	NONE	Obspar update status	NONE	UPDATED
Data mode	VFAINT	VFAINT	CCD I0 on	Y	Y
Observation mode	POINTING	POINTING	CCD I1 on	Y	Y
[deg] Pointing RA	252.277726	252.3093097833982	CCD I2 on	Y	Y
[deg] Pointing Dec	34.812764	34.82188313298222	CCD I3 on	Y	Y
[deg] Pointing Roll	348.912455	349.1030593658762	CCD S0 on	N	N
[mm] SIM focus pos	-0.782348	-0.7809083437167272	CCD S1 on	N	N
[mm] SIM defocus	0	0.001439871863259334	CCD S2 on	O1	Y
[mm] SIM translation stage pos	-233.592463	-233.5874344608287	CCD S3 on	N	N
[mm] SIM translation stage offset	0	-0.005018542100998502	CCD S4 on	N	N
[s] Observation start time (MET)	312512368.184000	312511992.23181	CCD S5 on	N	N
Observation start date	2007-11-27T00:58:23	2007-11-27T00:53:12	Number of optional ACIS chips dropped	0	0
[s] Observation end time (MET)	312521314.184000	312522226.8573	On-chip summing requested	N	N
Observation end date	2007-11-27T03:27:29	2007-11-27T03:43:46	Subarray requested	NONE	NONE
Read mode	TIMED	TIMED	Alternating exposures requested	N	N
			[s] Primary exposure time	0.000000	3.1

2.3 Aspect



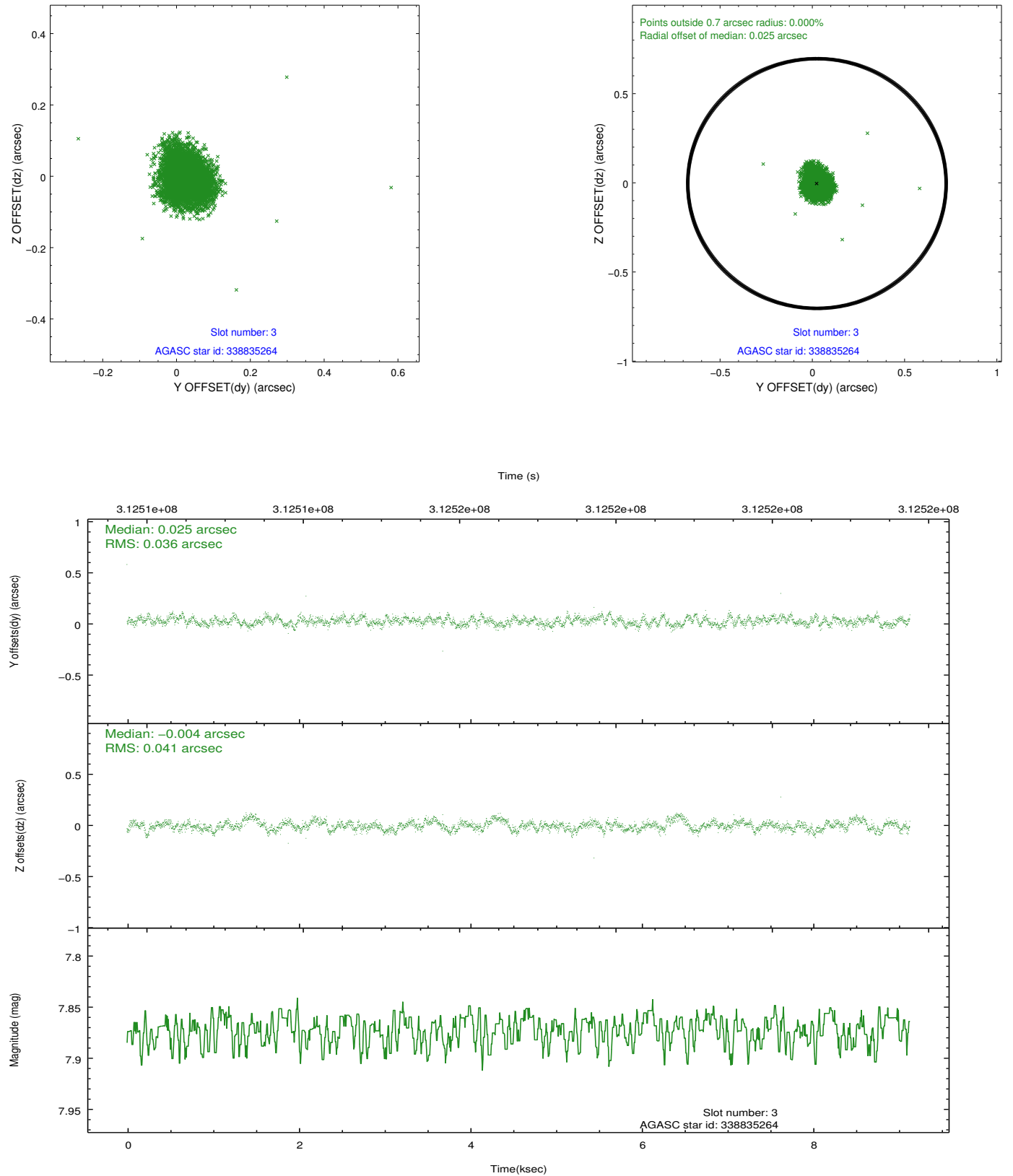


Slot Statistics

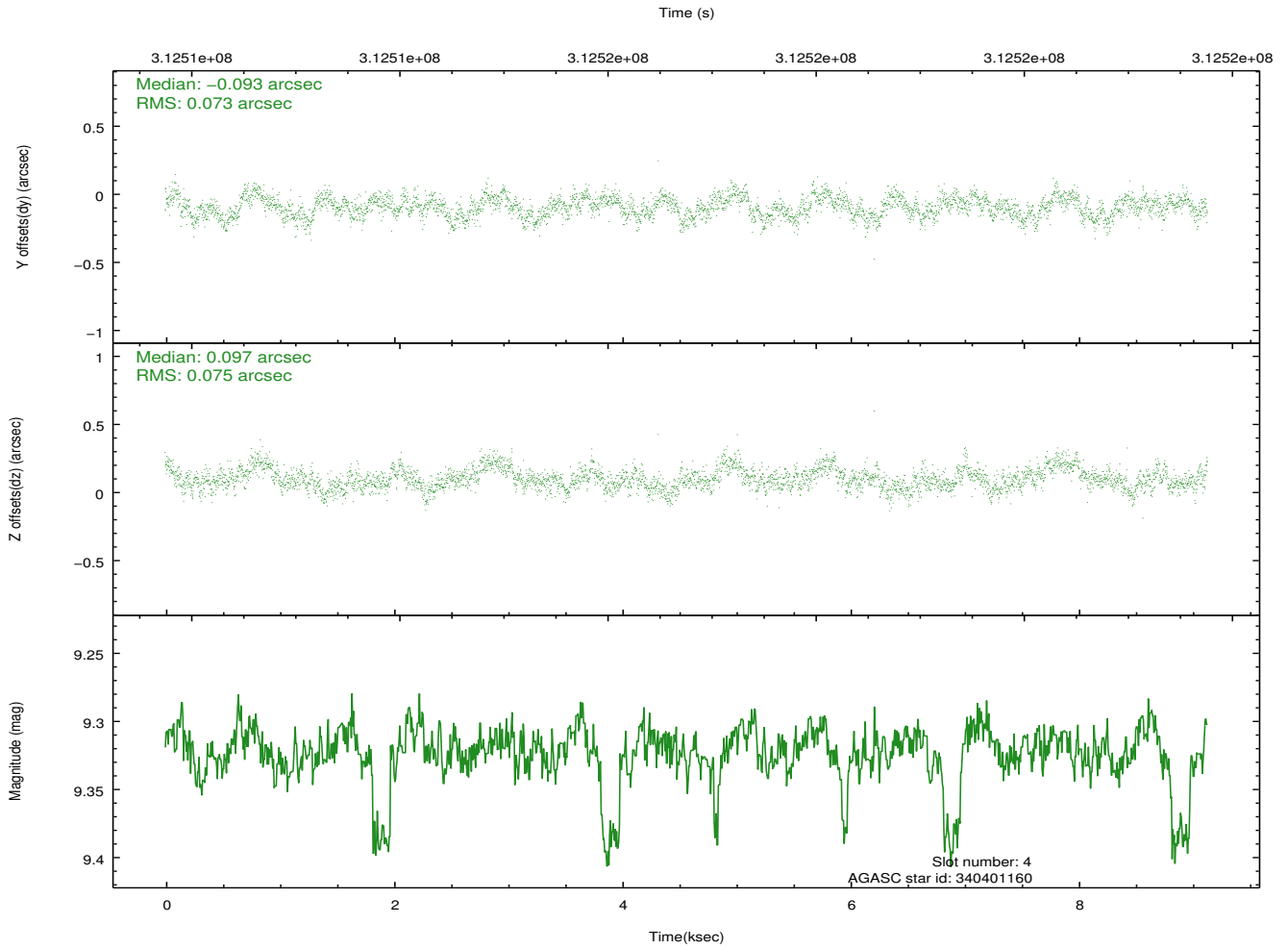
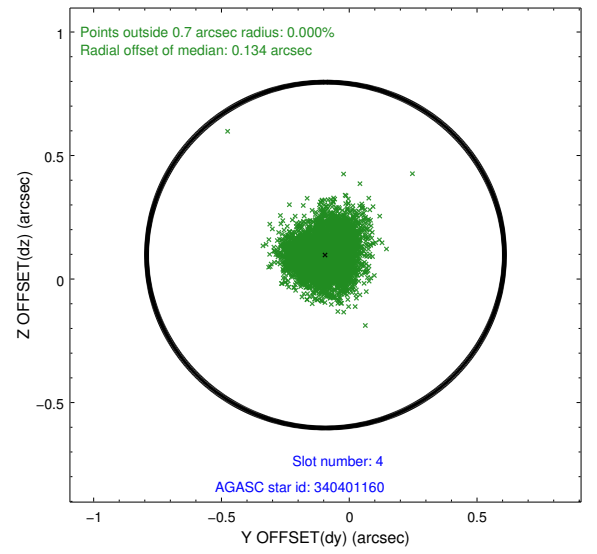
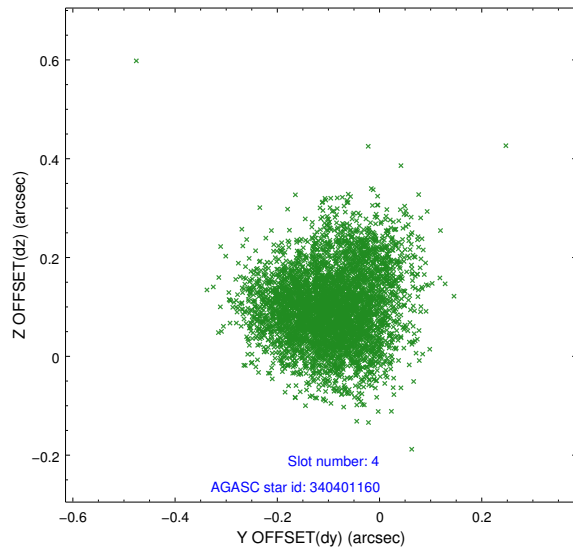
slot	status	id	mag	n_pts	med_dy	med_dz	dr1	dr2	ra	dec	mean_y	mean_z
0	FID	ACIS-I-1	7.23	2229	-0.009	-0.081	0.008	0.014	0.000000	0.000000	925.59	-840.41
1	FID	ACIS-I-4	7.15	2229	0.147	0.084	0.008	0.012	0.000000	0.000000	2146.13	1059.25
2	FID	ACIS-I-5	7.22	2228	-0.236	0.068	0.007	0.012	0.000000	0.000000	-1821.86	1057.80
3	GUIDE	338835264	7.87	4457	0.025	-0.004	0.058	0.093	251.919565	34.226279	-639.68	-2275.12
4	GUIDE	340401160	9.32	4452	-0.093	0.097	0.113	0.178	252.460112	35.243739	227.85	1625.90
5	GUIDE	340404480	8.10	4456	-0.039	-0.101	0.066	0.107	252.719113	34.236377	1688.41	-1780.26
6	GUIDE	340405600	8.12	4455	0.069	-0.047	0.068	0.115	252.813465	34.289368	1925.89	-1537.83
7	GUIDE	338839992	8.47	4453	0.038	0.048	0.068	0.105	251.528053	34.360854	-1874.15	-2017.12

2.4 Star Slots

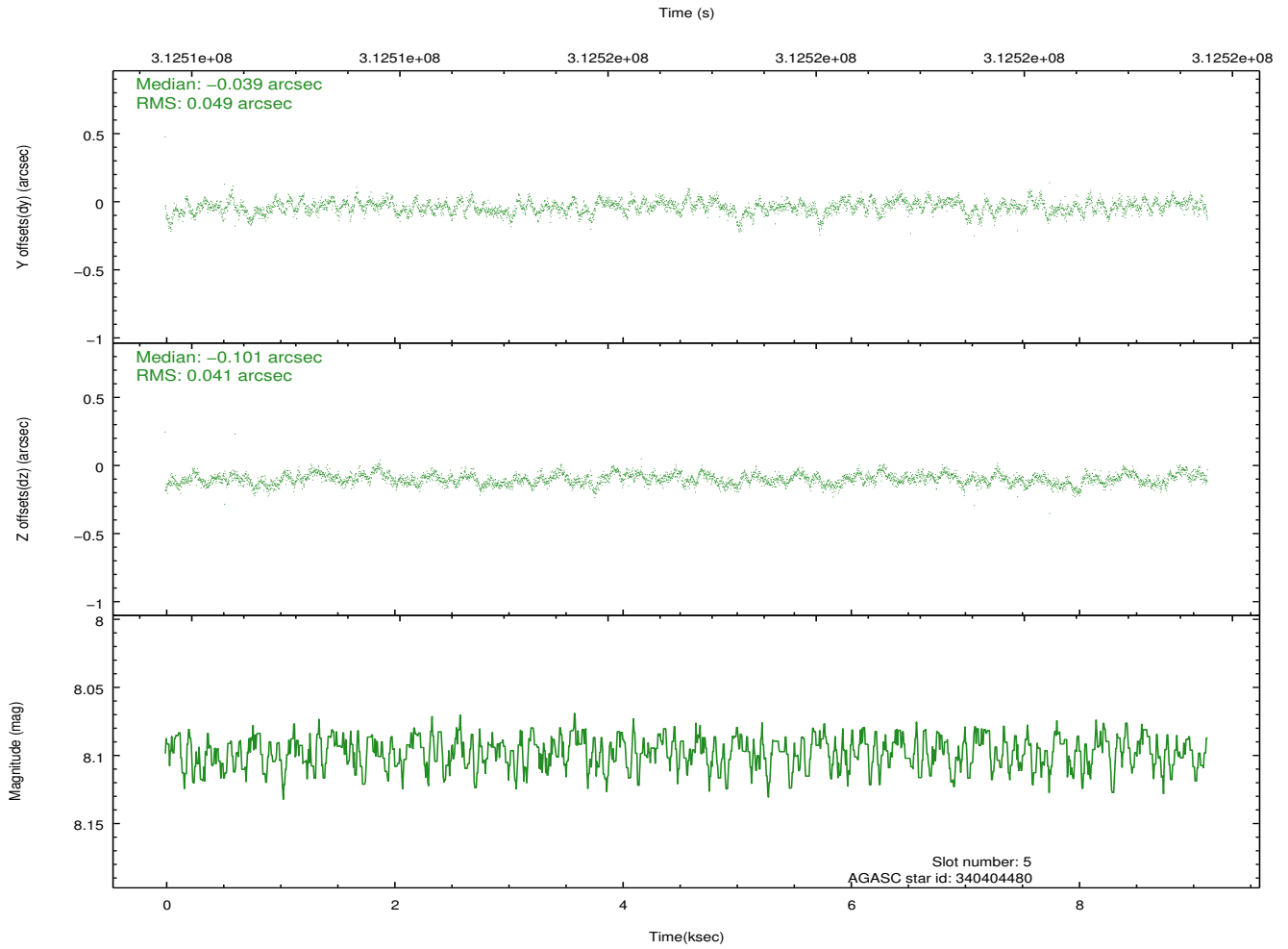
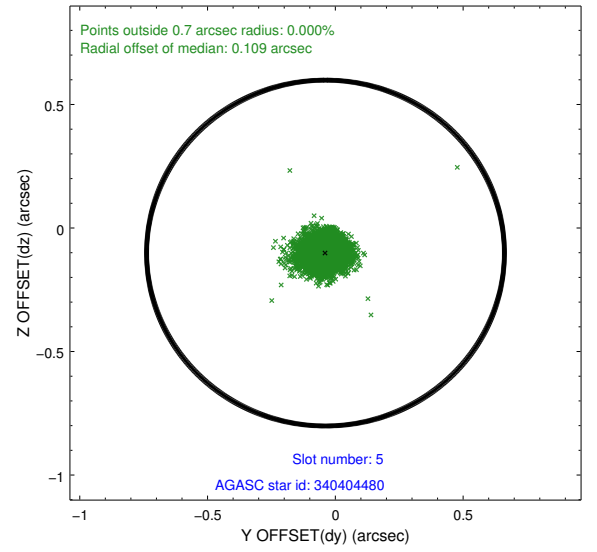
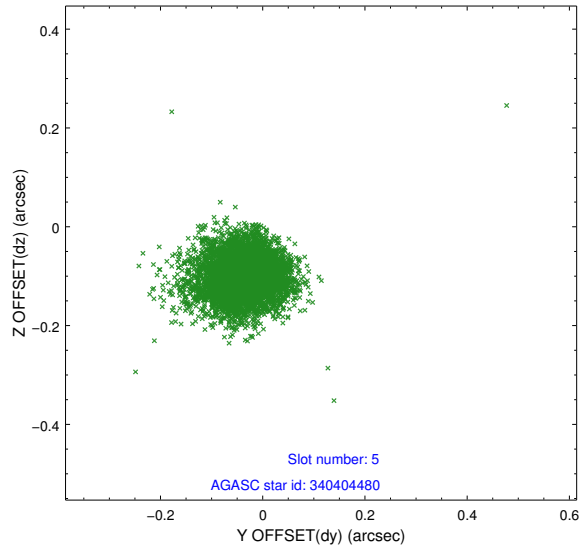
2.4.1 Slot 3



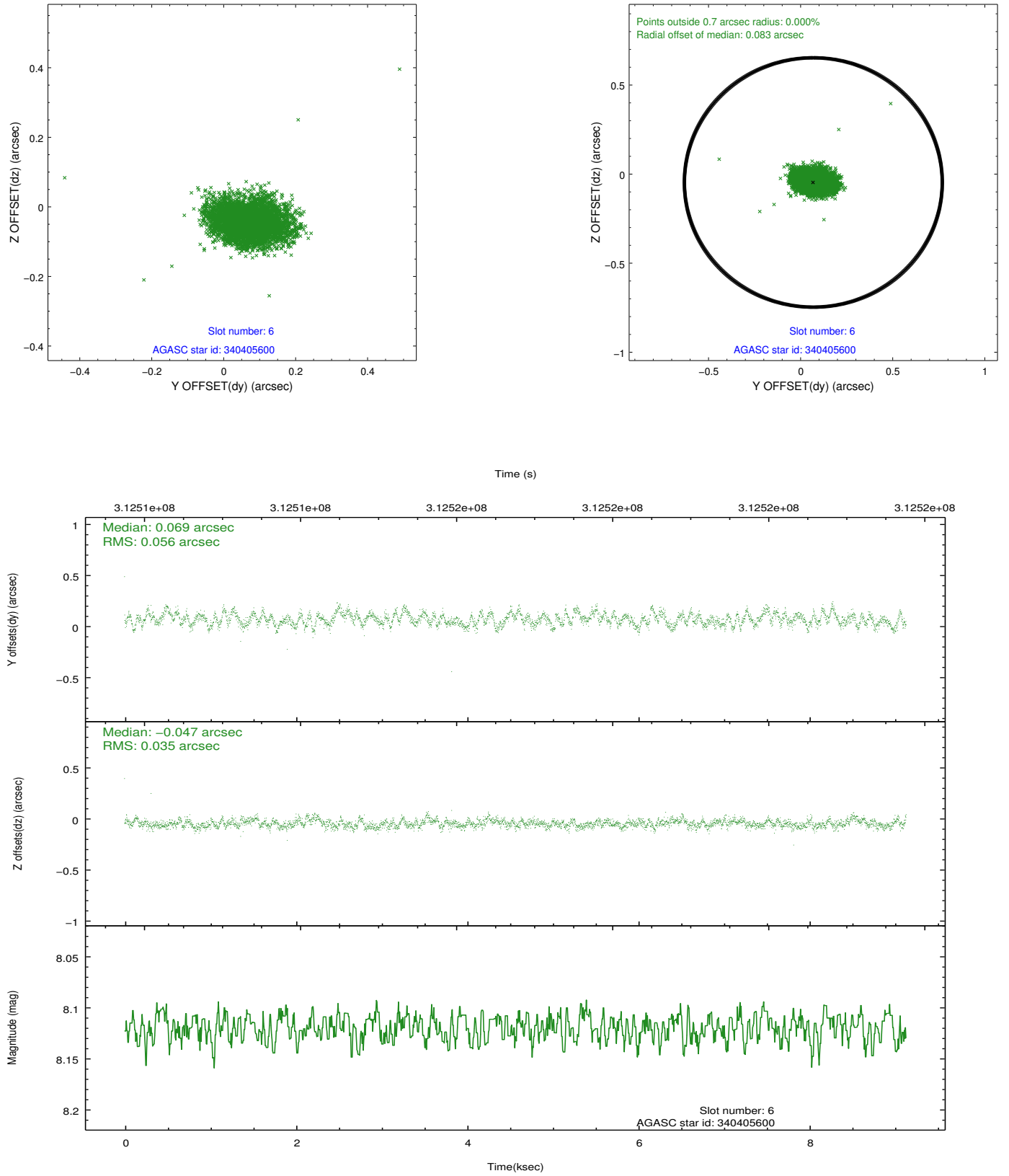
2.4.2 Slot 4



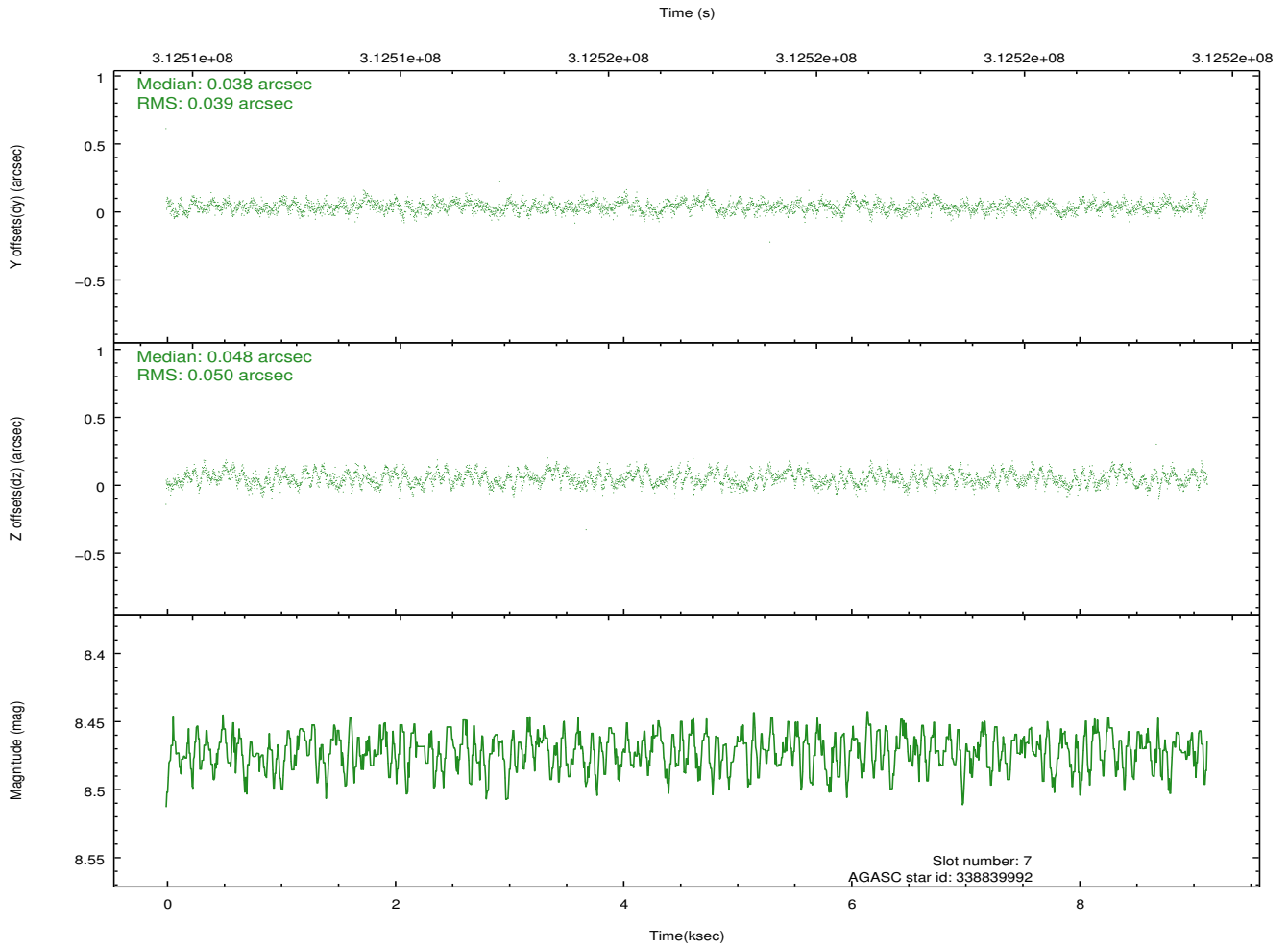
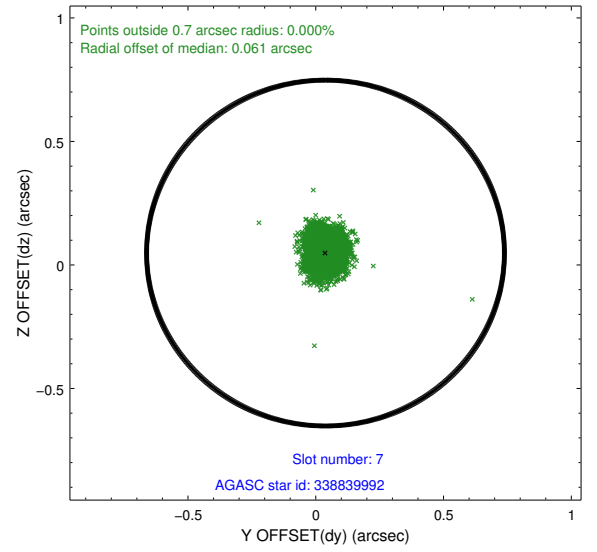
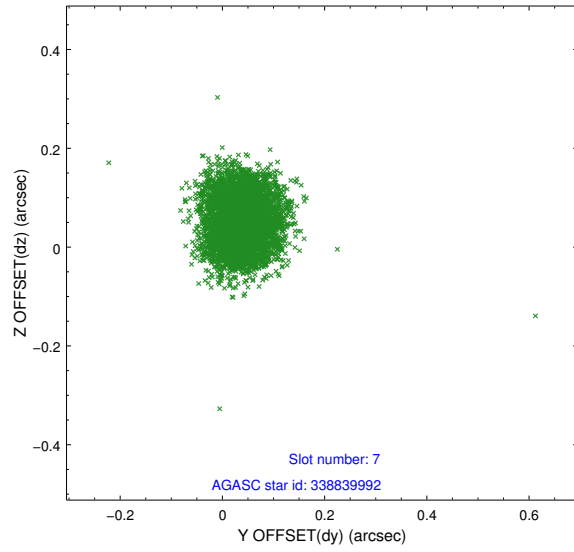
2.4.3 Slot 5



2.4.4 Slot 6

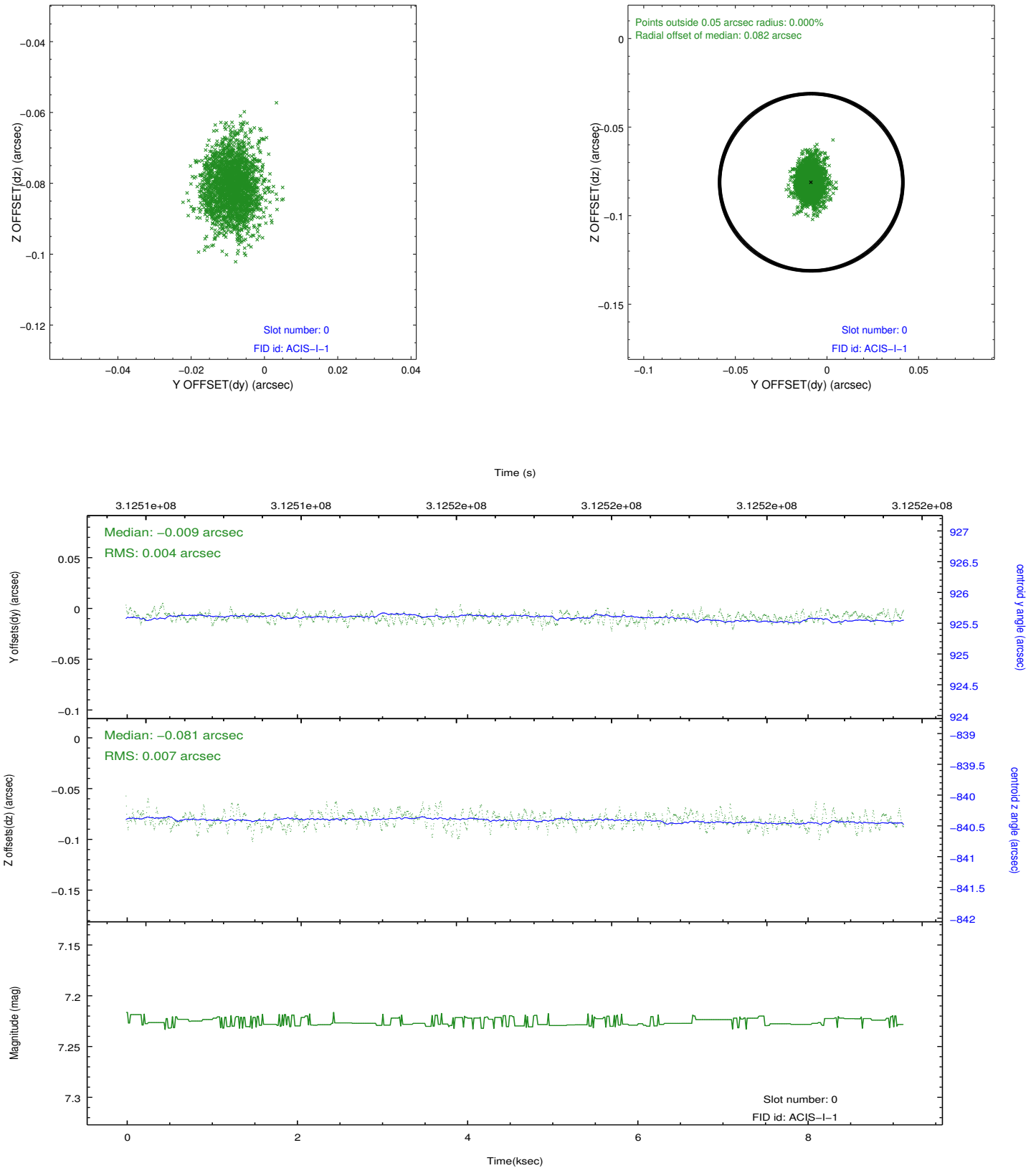


2.4.5 Slot 7

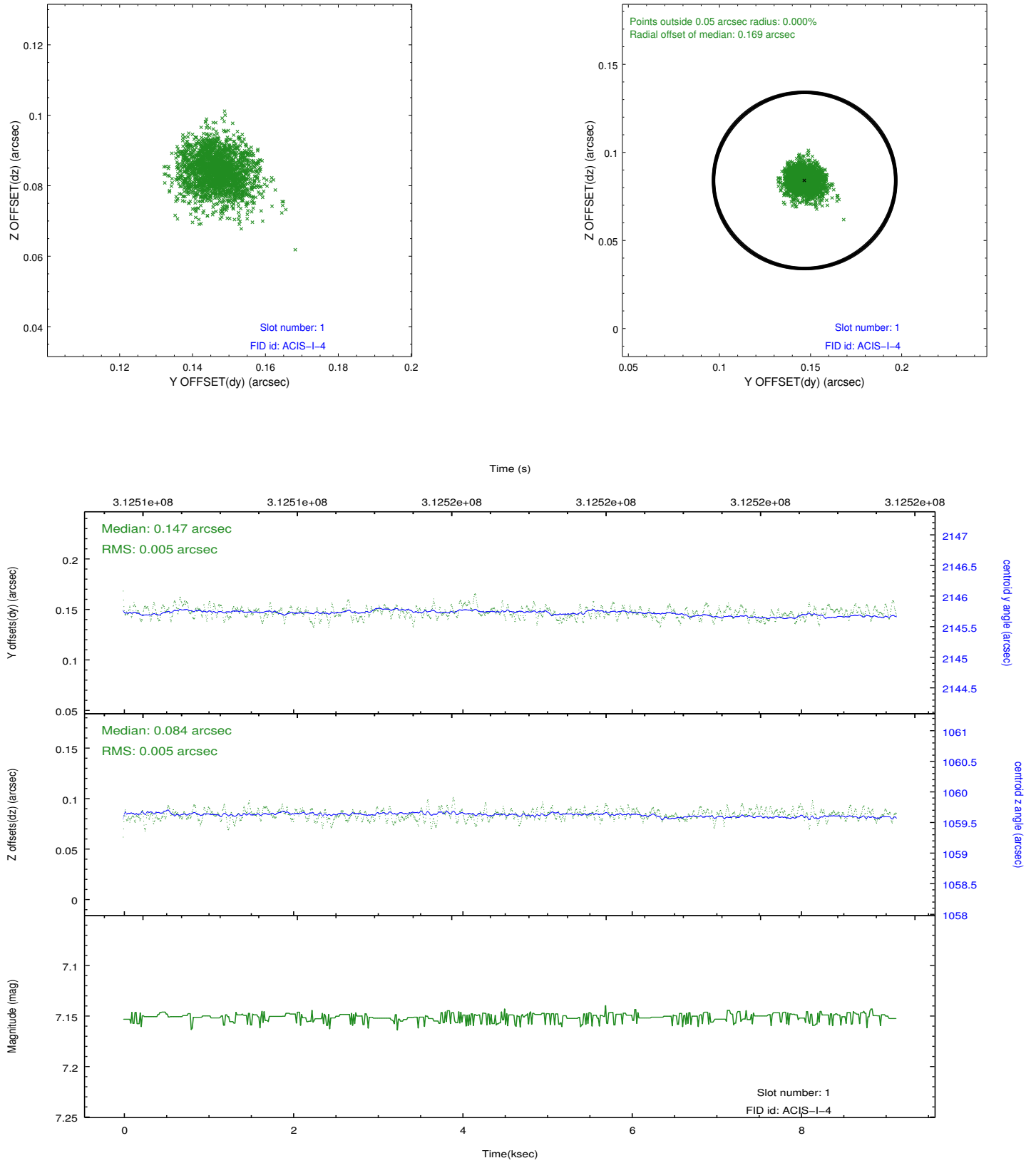


2.5 FID Slots

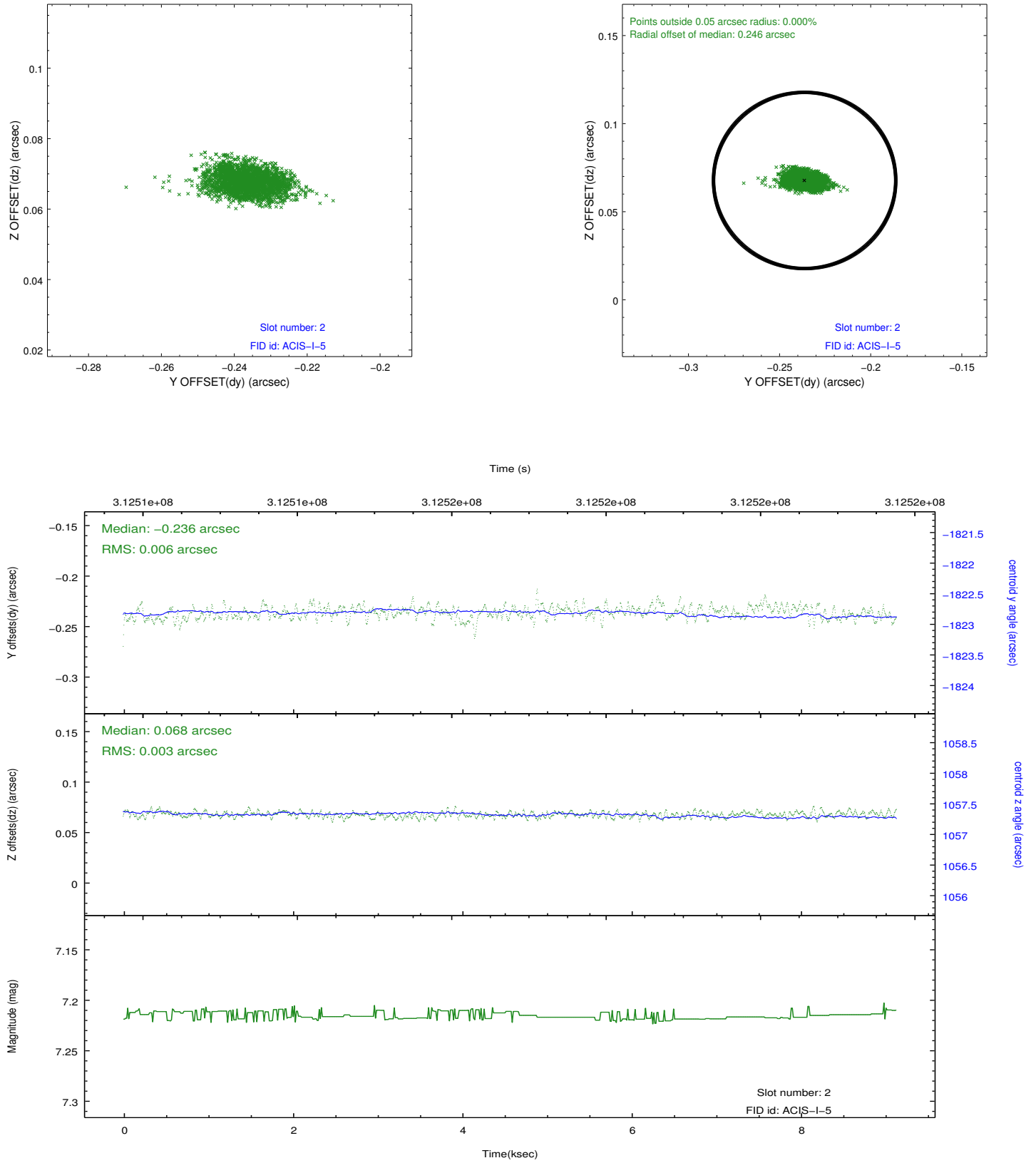
2.5.1 Slot 0



2.5.2 Slot 1



2.5.3 Slot 2



A Summary

A.1 Status

V&V Scientist	Jen Lauer
V&V Date (YYYY-MM-DD)	2012.05.07
V&V Edition	1
V&V Disposition and Status	OK
V&V Charge Time	8.72340006

A.2 Comments