

V&V Reference Report

L2 ASCDS Version : 8.4.4

Observation 8250 - L2 Version 2
Chandra X-Ray Center

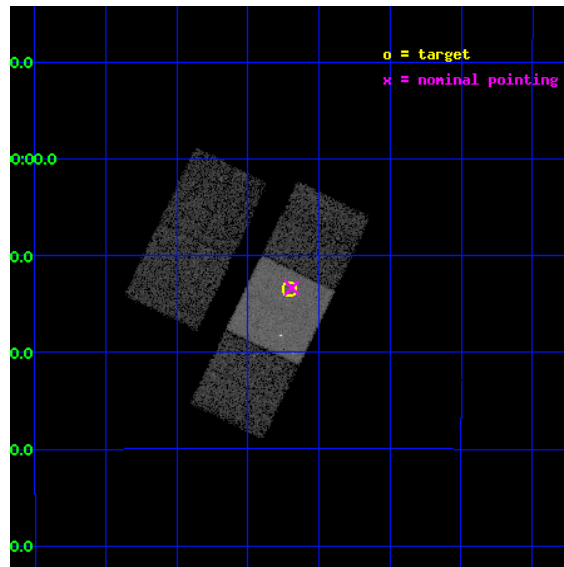
L2 Processing Date : Apr 27 2012

Contents

1	Front	2
2	OBI	3
2.1	OBI	3
2.1.1	Images	3
2.1.2	Bias	3
2.1.3	Parameters	4
2.1.4	Events	4
2.2	Compared Parameters	5
2.3	Aspect	6
2.4	Star Slots	9
2.4.1	Slot 3	9
2.4.2	Slot 4	10
2.4.3	Slot 5	11
2.4.4	Slot 6	12
2.4.5	Slot 7	13
2.5	FID Slots	14
2.5.1	Slot 0	14
2.5.2	Slot 1	15
2.5.3	Slot 2	16
A	Summary	17
A.1	Status	17
A.2	Comments	17

1 Front

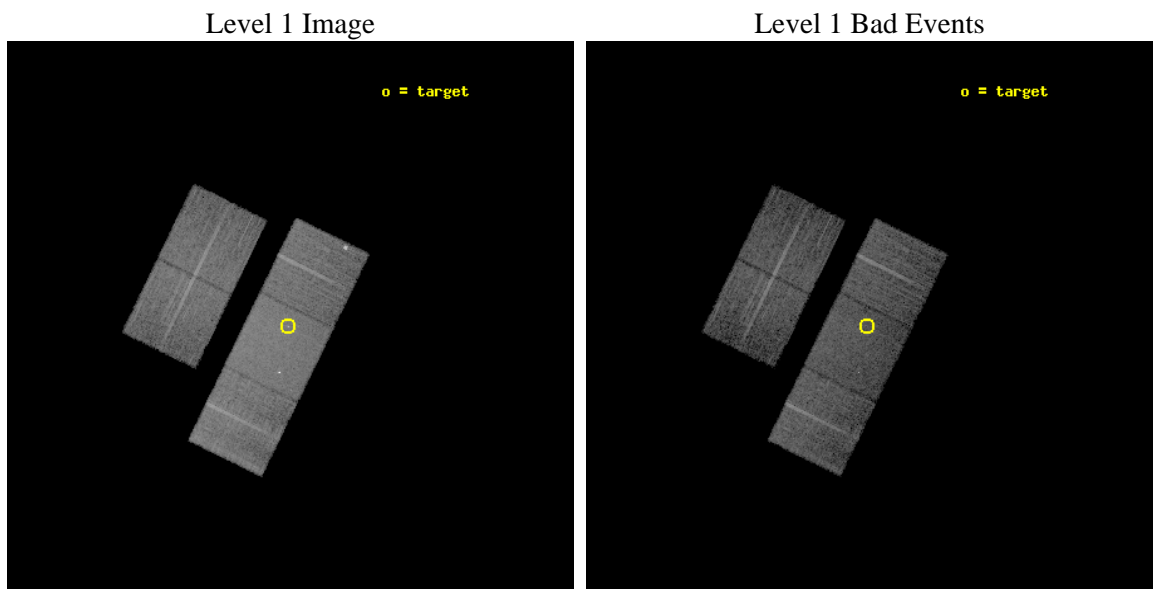
seq_num	701565	Sequence number
obs_id	8250	Observation id
title	A snapshot X-ray/radio survey of AGNs selected from the long menu of SDSS galaxies	Proposal title
observer	Dr. Sebastian Heinz	Principal investigator
object	APMUKS 212229-085908	Source name
dtcycle	0	
cycle	P	events from which exps? Prim/Second/Both
ra_targ	321.302	Observer's specified target RA [deg]
dec_targ	-7.225	Observer's specified target Dec [deg]
ra_nom	321.29781484215	Nominal RA [deg]
dec_nom	-7.2224449340799	Nominal Dec [deg]
roll_nom	116.05792023546	Nominal Roll [deg]
revision	2	Processing version of data
ontime	6970.5339457393	Sum of GTIs [s]
livetime	6879.4587881057	Livetime [s]
ontime2	6970.3697857261	Sum of GTIs [s]
ontime3	6967.3108654022	Sum of GTIs [s]
ontime6	6970.492905736	Sum of GTIs [s]
ontime7	6970.5339457393	Sum of GTIs [s]
ontime8	6970.4108257294	Sum of GTIs [s]
l2events	69447	Number of level 2 events



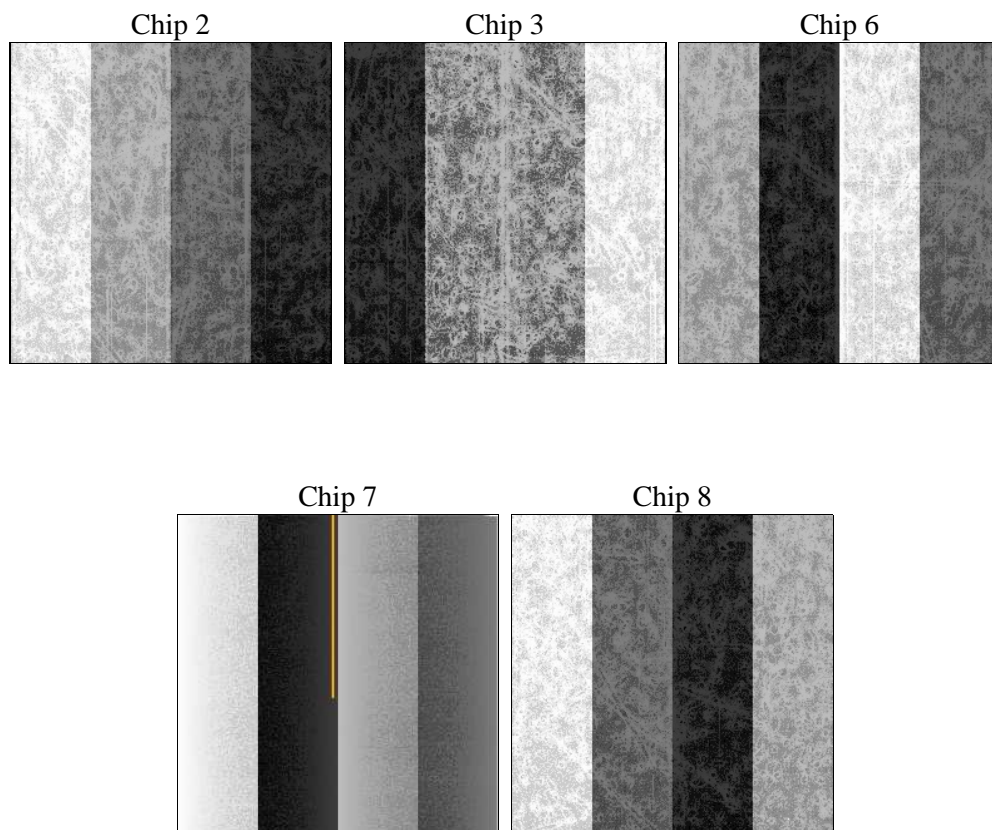
2 OBI

2.1 OBI

2.1.1 Images



2.1.2 Bias



2.1.3 Parameters

obi_num	0	Obi number	sched_exp_time	6940.493000	[s] Scheduled observation exposure time
ascdsver	8.4.4	Processing system revision	ontime	6970.5339457393	Sum of GTIs [s]
caldsver	4.4.9	 	ontime2	6970.3697857261	Sum of GTIs [s]
date	2012-04-27T02:13:20	Date and time of file creation	ontime3	6967.3108654022	Sum of GTIs [s]
revision	2	Processing version of data	ontime6	6970.492905736	Sum of GTIs [s]
			ontime7	6970.5339457393	Sum of GTIs [s]
			ontime8	6970.4108257294	Sum of GTIs [s]
			l1events	389766	Number of level 1 events

2.1.4 Events

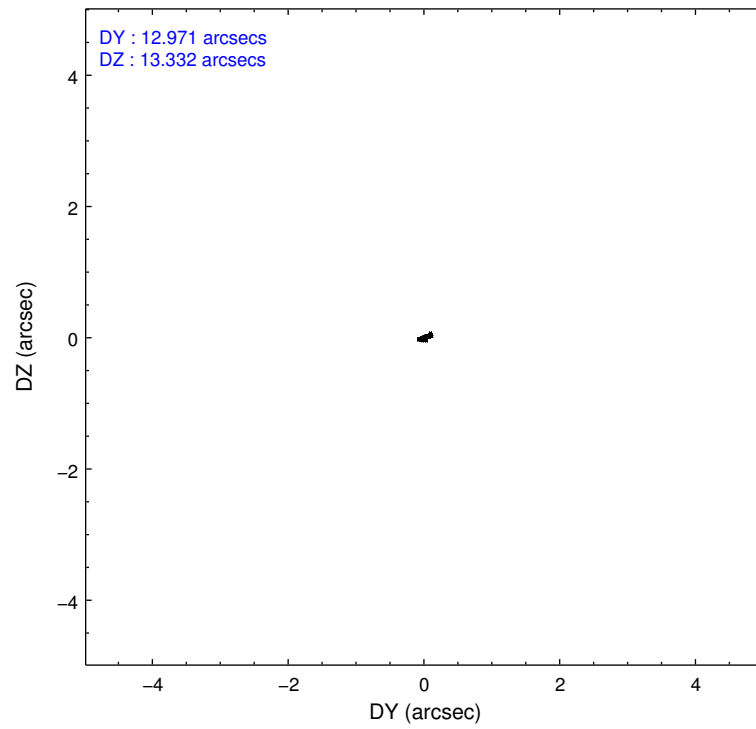
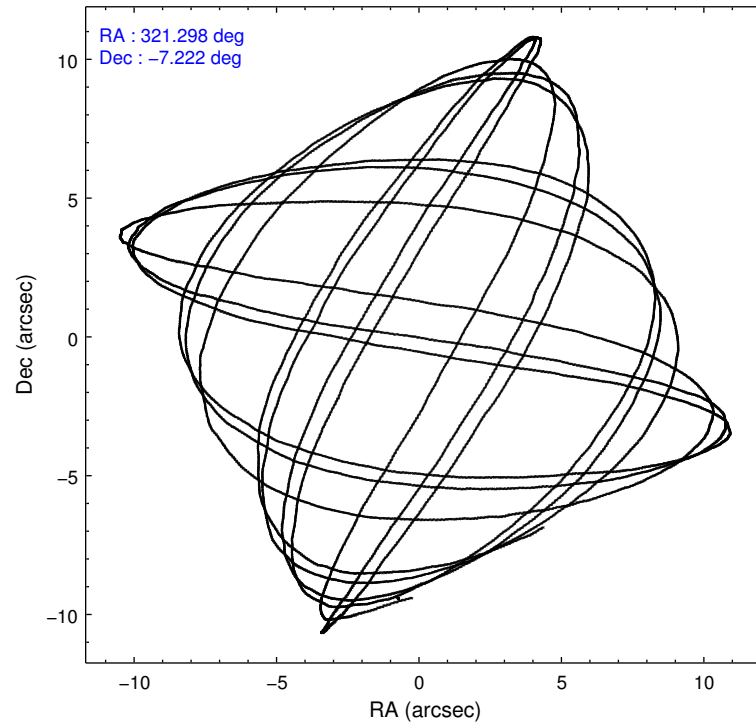
	ccd 2	ccd 3	ccd 6	ccd 7	ccd 8
level 1 events	65510	66214	72490	97595	87957
rejected events	58053	58250	62251	55993	68504
rejected %	88%	87%	85%	57%	77%

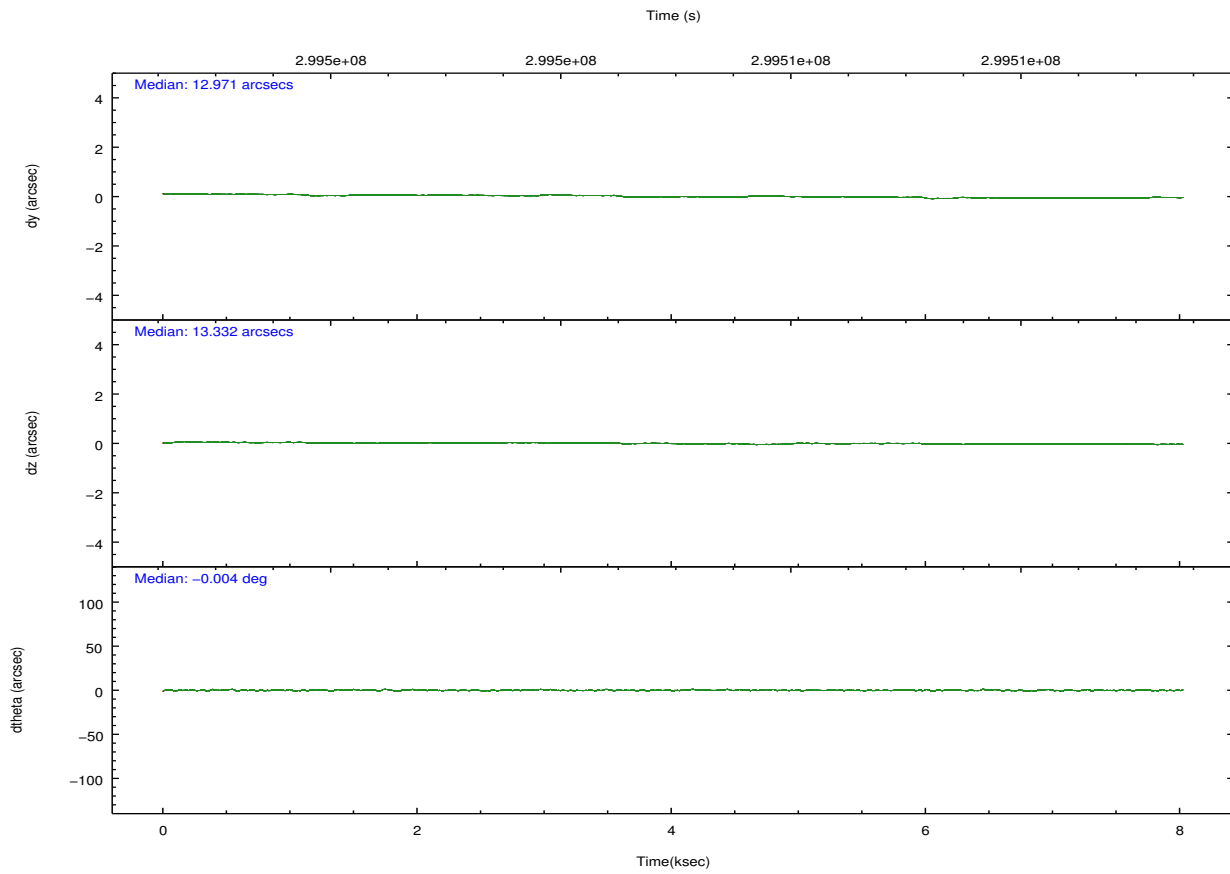
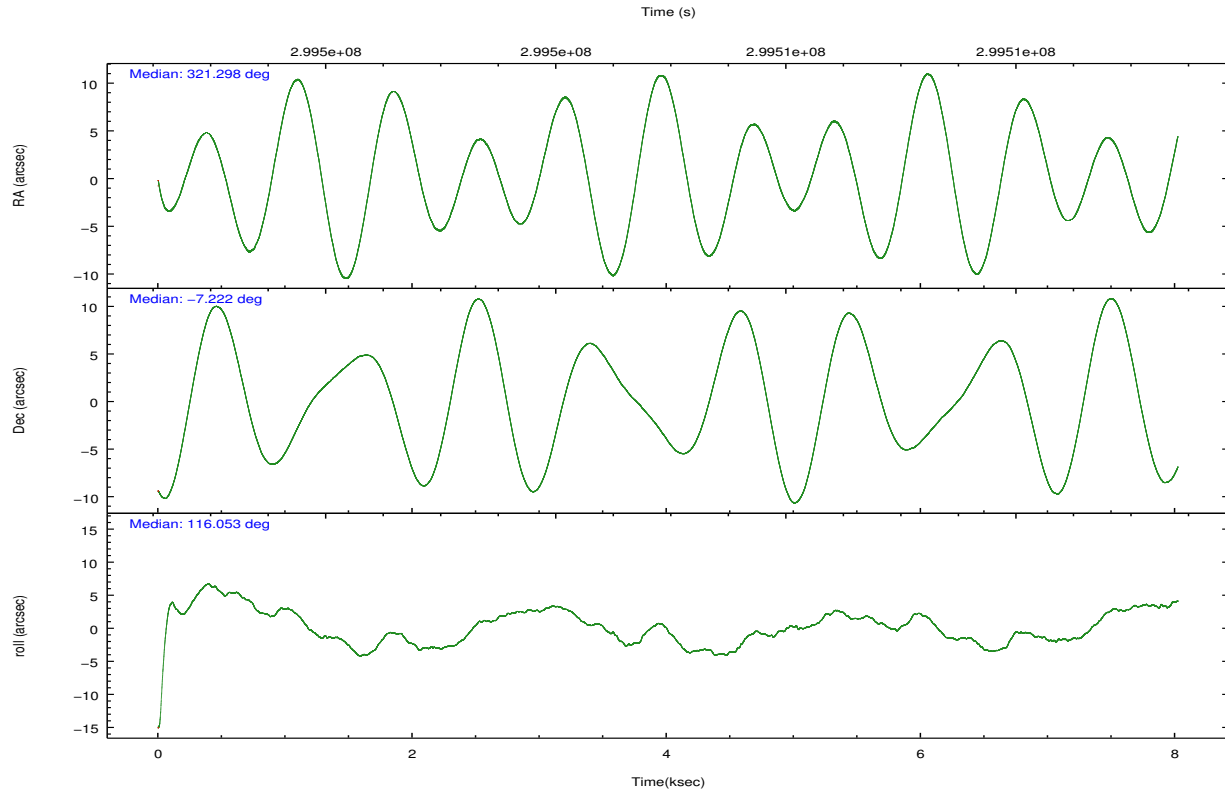
	ccd 2	ccd 3	ccd 6	ccd 7	ccd 8
grade 0 events	3085	3439	5254	4145	6114
	4%	5%	7%	4%	6%
grade 1 events	26	41	52	133	77
	0%	0%	0%	0%	0%
grade 2 events	1573	1588	1789	8727	4397
	2%	2%	2%	8%	4%
grade 3 events	744	787	758	3606	1974
	1%	1%	1%	3%	2%
grade 4 events	732	784	744	3519	1869
	1%	1%	1%	3%	2%
grade 5 events	2707	3057	3209	8822	4262
	4%	4%	4%	9%	4%
grade 6 events	1326	1374	1704	21633	5112
	2%	2%	2%	22%	5%
grade 7 events	55317	55144	58980	47010	64152
	84%	83%	81%	48%	72%

2.2 Compared Parameters

Parameter	Planned	Actual	Parameter	Planned	Actual
Instrument	ACIS	ACIS	Obspar format version number	7	7
Detector	ACIS-23678	ACIS-23678	Obspar file type	PREDICTED	ACTUAL
Grating	NONE	NONE	Obspar update status	NONE	UPDATED
Data mode	VFAINT	VFAINT	CCD I0 on	N	N
Observation mode	POINTING	POINTING	CCD I1 on	N	N
[deg] Pointing RA	321.320949	321.2978148421541	CCD I2 on	O1	Y
[deg] Pointing Dec	-7.237367	-7.222444934079851	CCD I3 on	O2	Y
[deg] Pointing Roll	115.904231	116.0579202354633	CCD S0 on	N	N
[mm] SIM focus pos	-0.684267	-0.6828225247311905	CCD S1 on	N	N
[mm] SIM defocus	0	0.001444936568705701	CCD S2 on	O4	Y
[mm] SIM translation stage pos	-190.132523	-190.1400660498719	CCD S3 on	Y	Y
[mm] SIM translation stage offset	0	0.00754346686406393	CCD S4 on	O3	Y
[s] Observation start time (MET)	299502046.184000	299500527.31838	CCD S5 on	N	N
Observation start date	2007-06-29T10:59:41	2007-06-29T10:35:27	Number of optional ACIS chips dropped	0	0
[s] Observation end time (MET)	299508986.184000	299509197.28129	On-chip summing requested	N	N
Observation end date	2007-06-29T12:55:21	2007-06-29T12:59:57	Subarray requested	NONE	NONE
Read mode	TIMED	TIMED	Alternating exposures requested	N	N
			[s] Primary exposure time	0.000000	3.1

2.3 Aspect



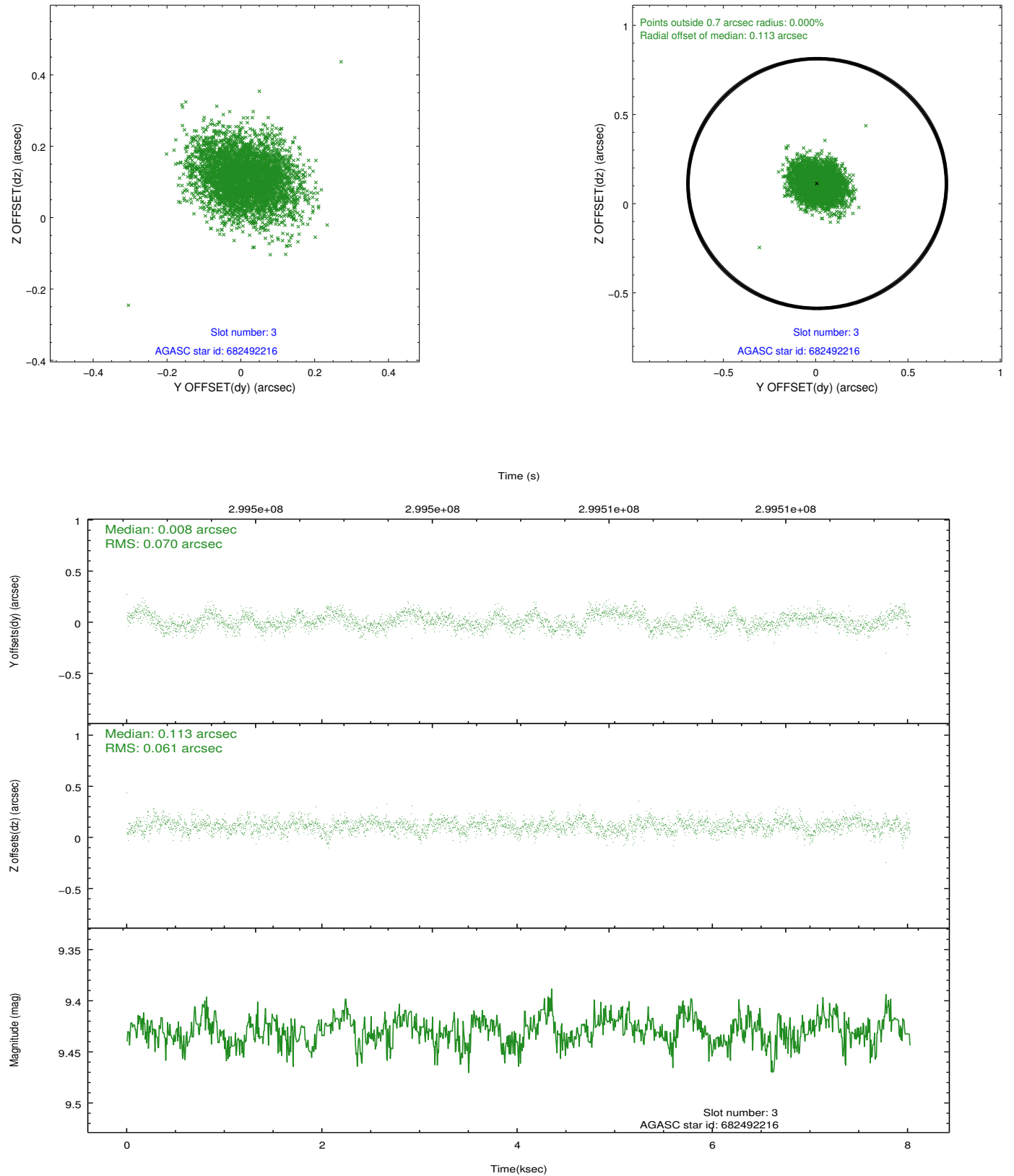


Slot Statistics

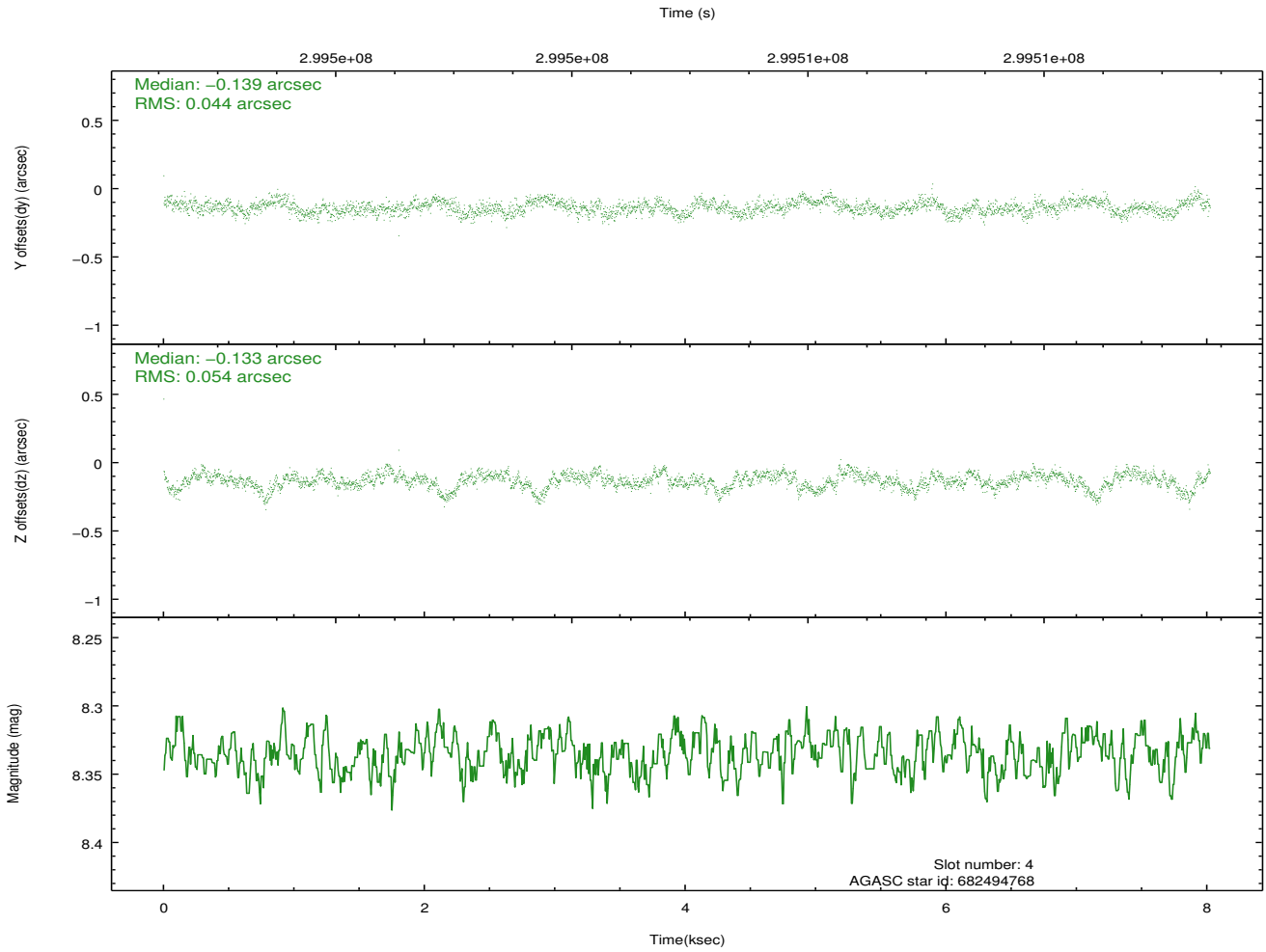
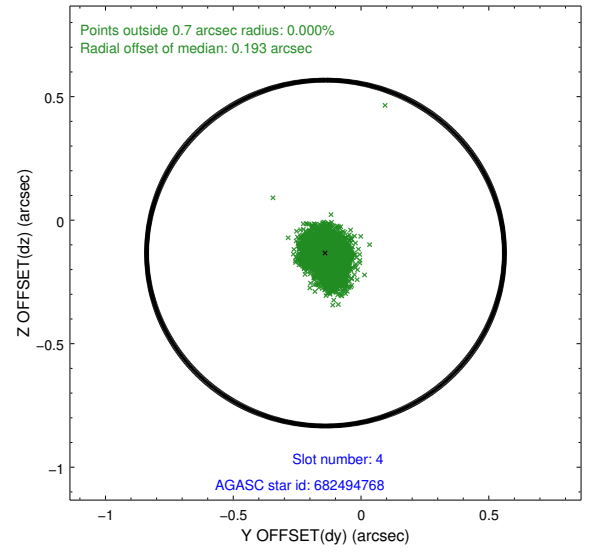
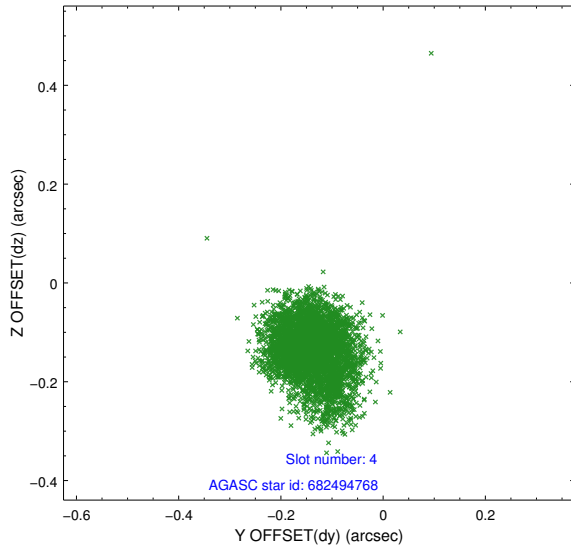
slot	status	id	mag	n_pts	med_dy	med_dz	dr1	dr2	ra	dec	mean_y	mean_z
0	FID	ACIS-S-2	7.10	1958	0.025	-0.063	0.006	0.011	0.000000	0.000000	-765.87	-1734.73
1	FID	ACIS-S-5	7.24	1958	-0.106	0.048	0.007	0.011	0.000000	0.000000	-1819.43	166.63
2	FID	ACIS-S-6	7.33	1958	0.055	0.022	0.006	0.010	0.000000	0.000000	395.01	811.30
3	GUIDE	682492216	9.43	3912	0.008	0.113	0.098	0.160	321.280803	-7.039583	703.51	-181.83
4	GUIDE	682494768	8.34	3912	-0.139	-0.133	0.073	0.121	321.045842	-6.743784	2028.12	108.40
5	GUIDE	682495440	9.00	3912	-0.119	0.286	0.107	0.168	321.752336	-6.979457	161.17	-1791.64
6	GUIDE	756679992	9.43	3914	0.050	-0.250	0.100	0.162	321.167254	-7.924438	-1985.34	1572.79
7	GUIDE	756680152	9.68	3912	0.182	-0.013	0.163	0.251	321.426775	-7.820485	-2053.66	577.72

2.4 Star Slots

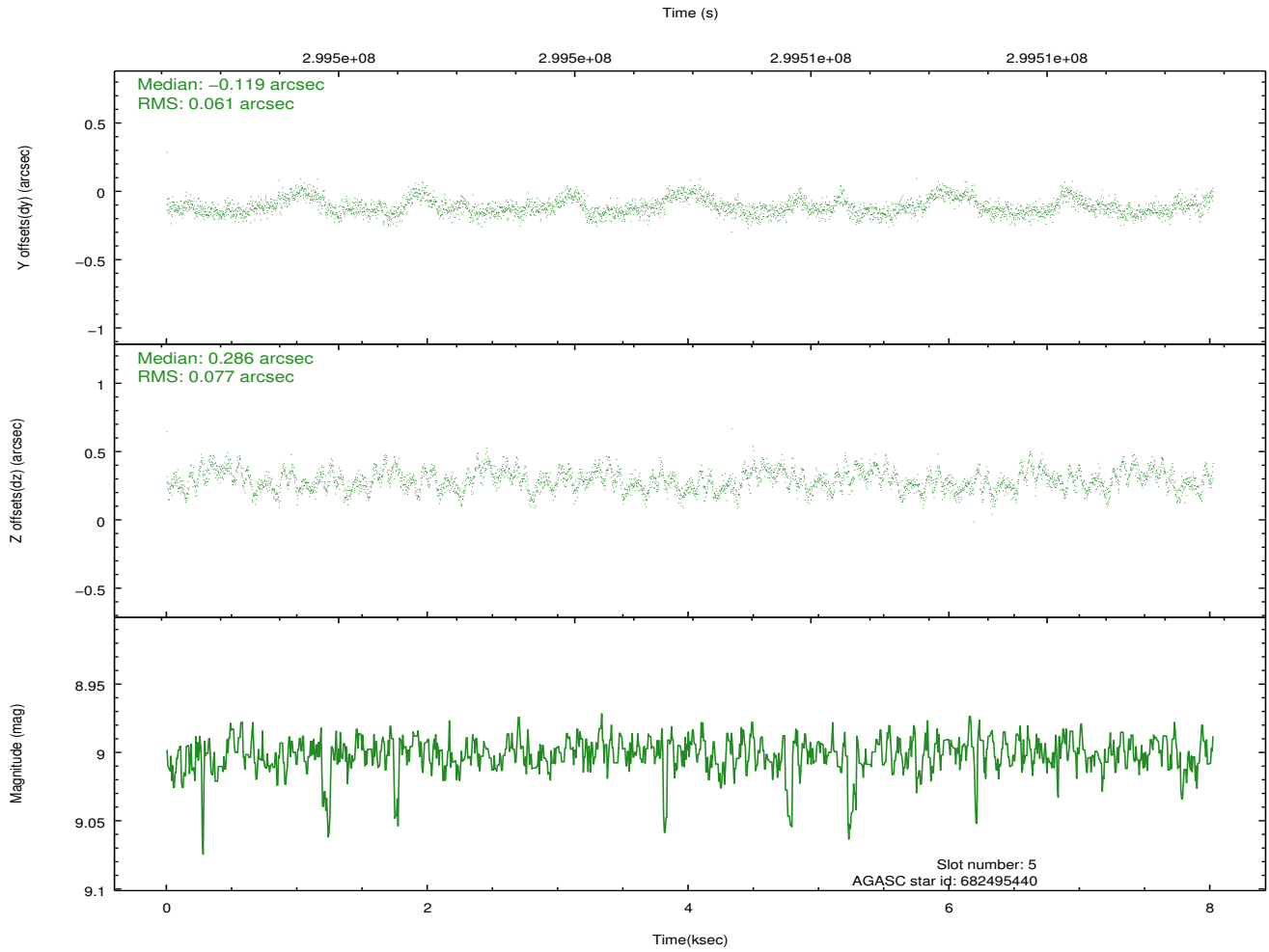
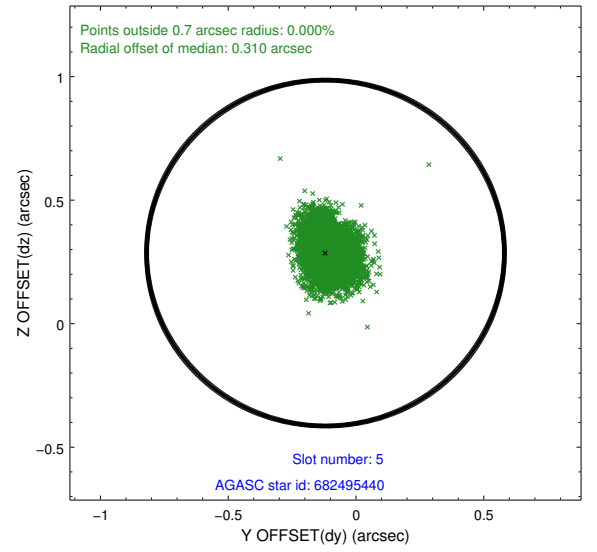
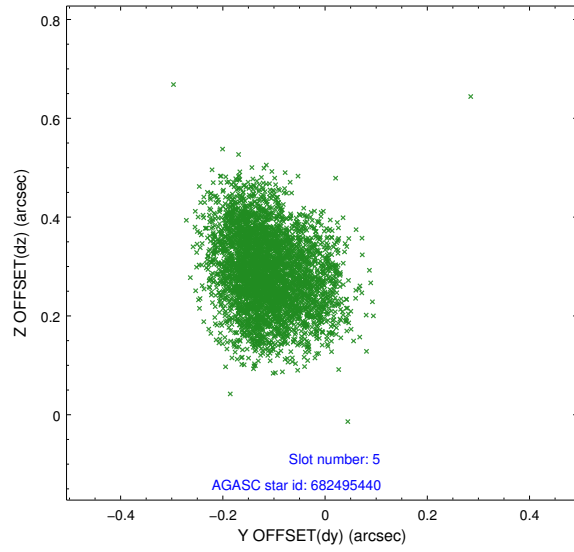
2.4.1 Slot 3



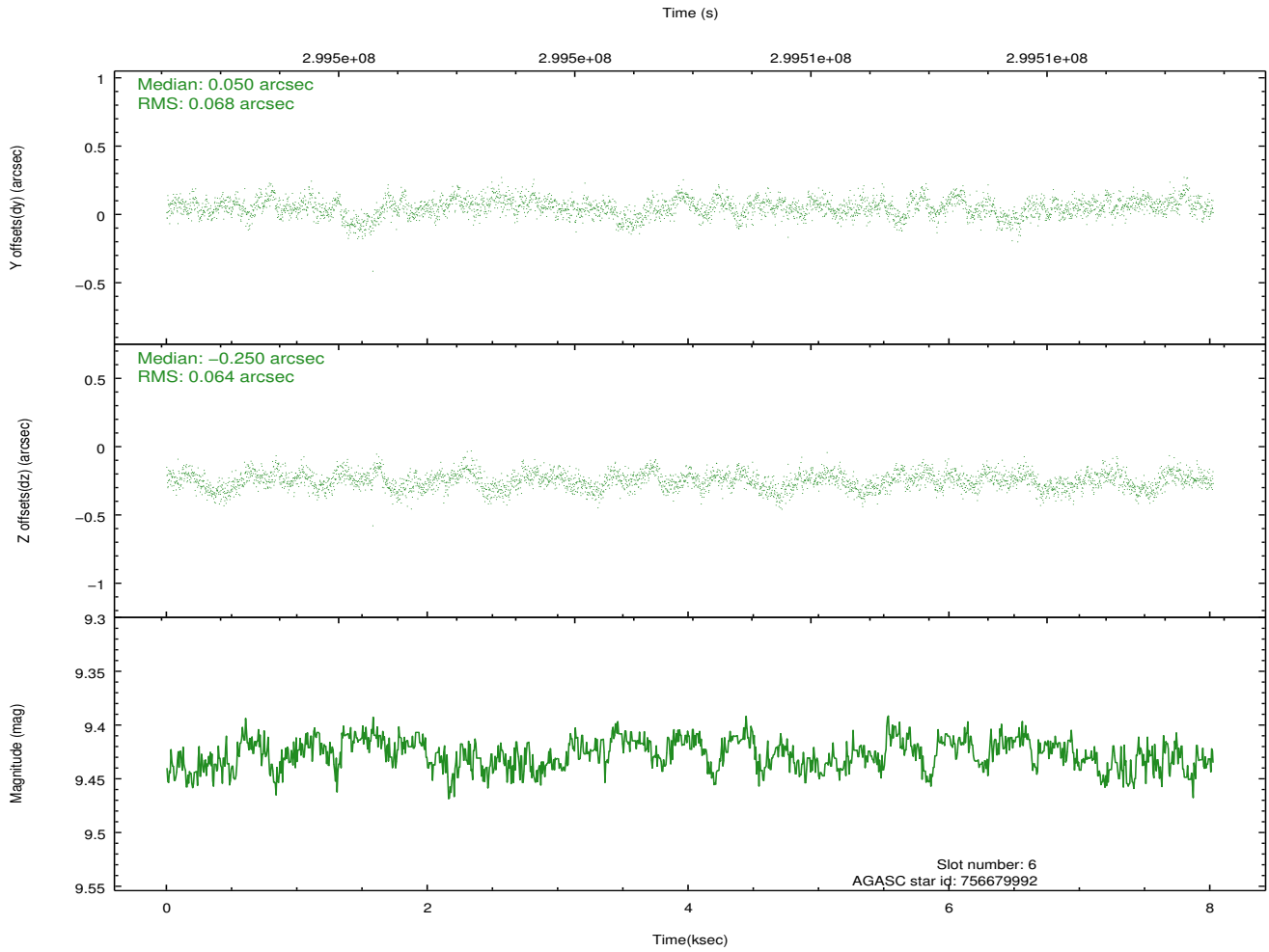
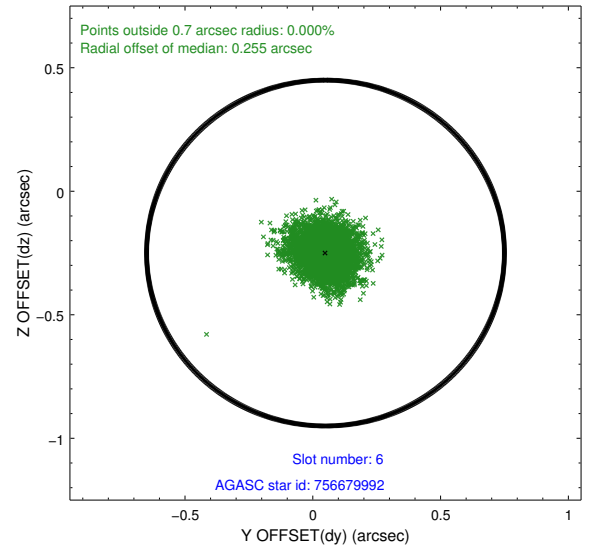
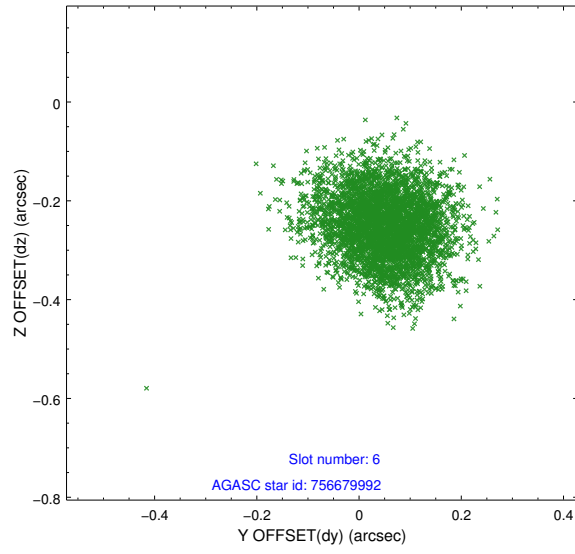
2.4.2 Slot 4



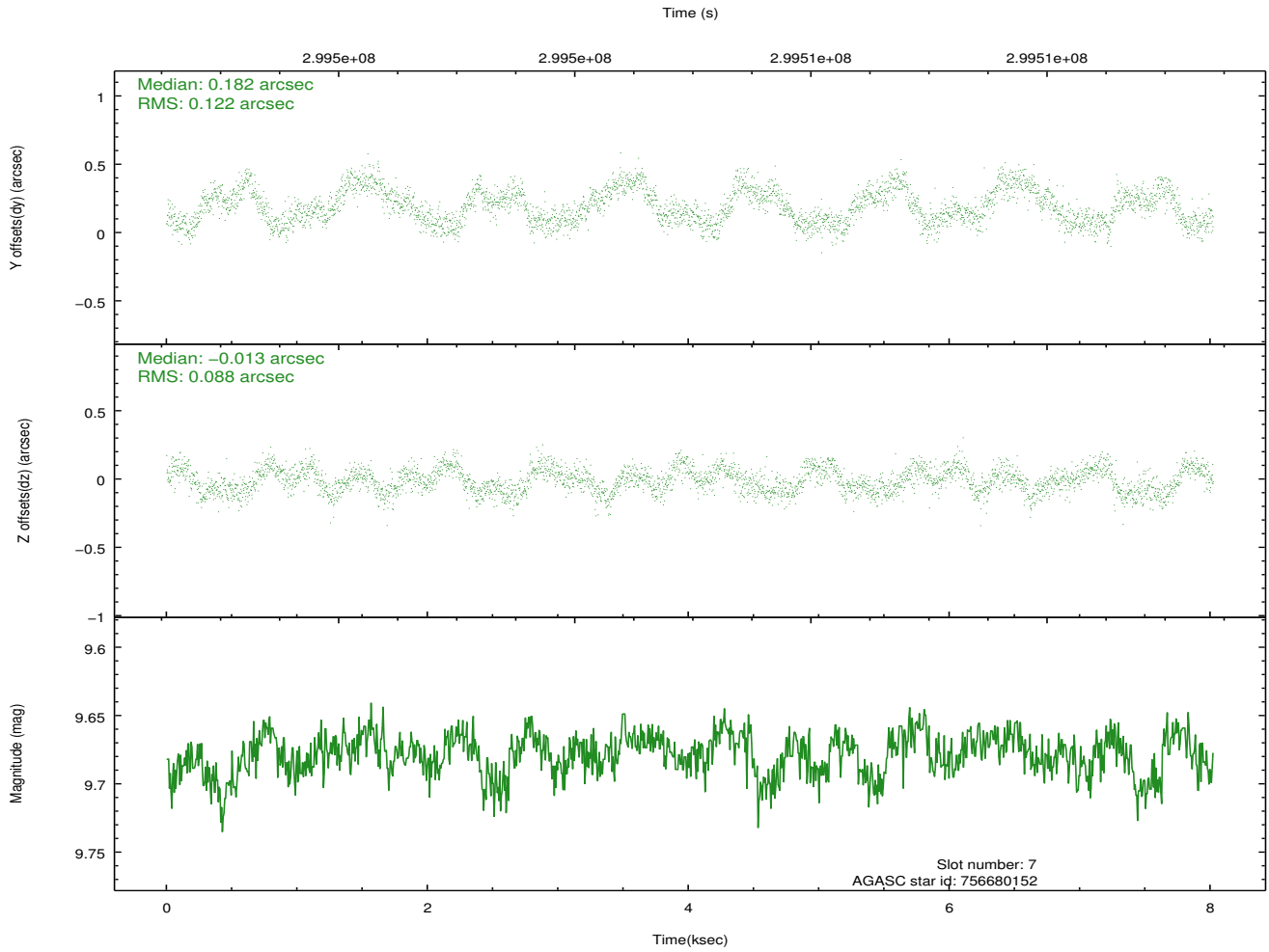
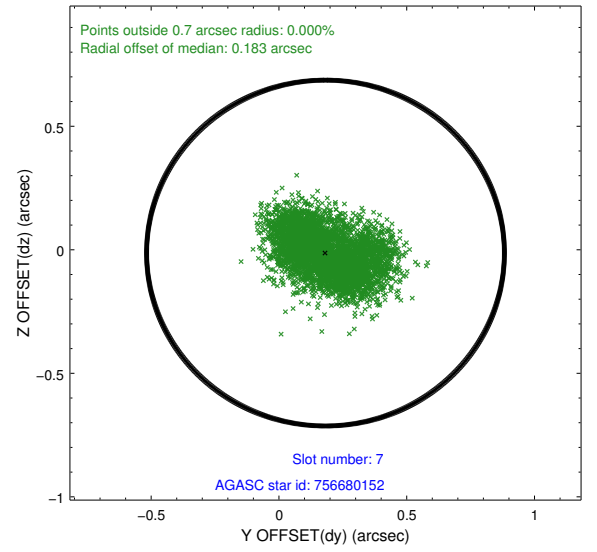
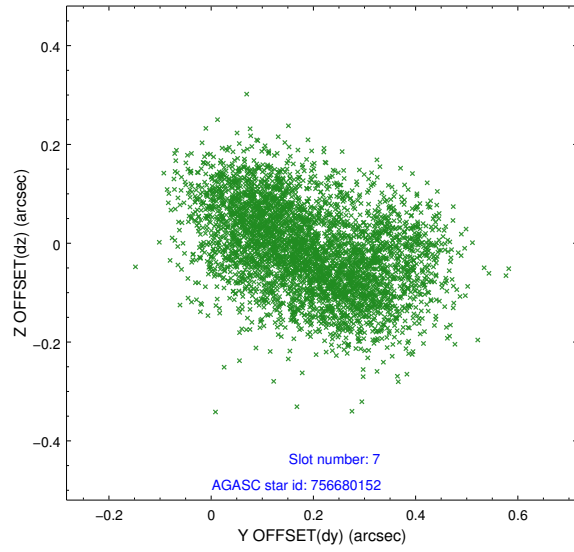
2.4.3 Slot 5



2.4.4 Slot 6

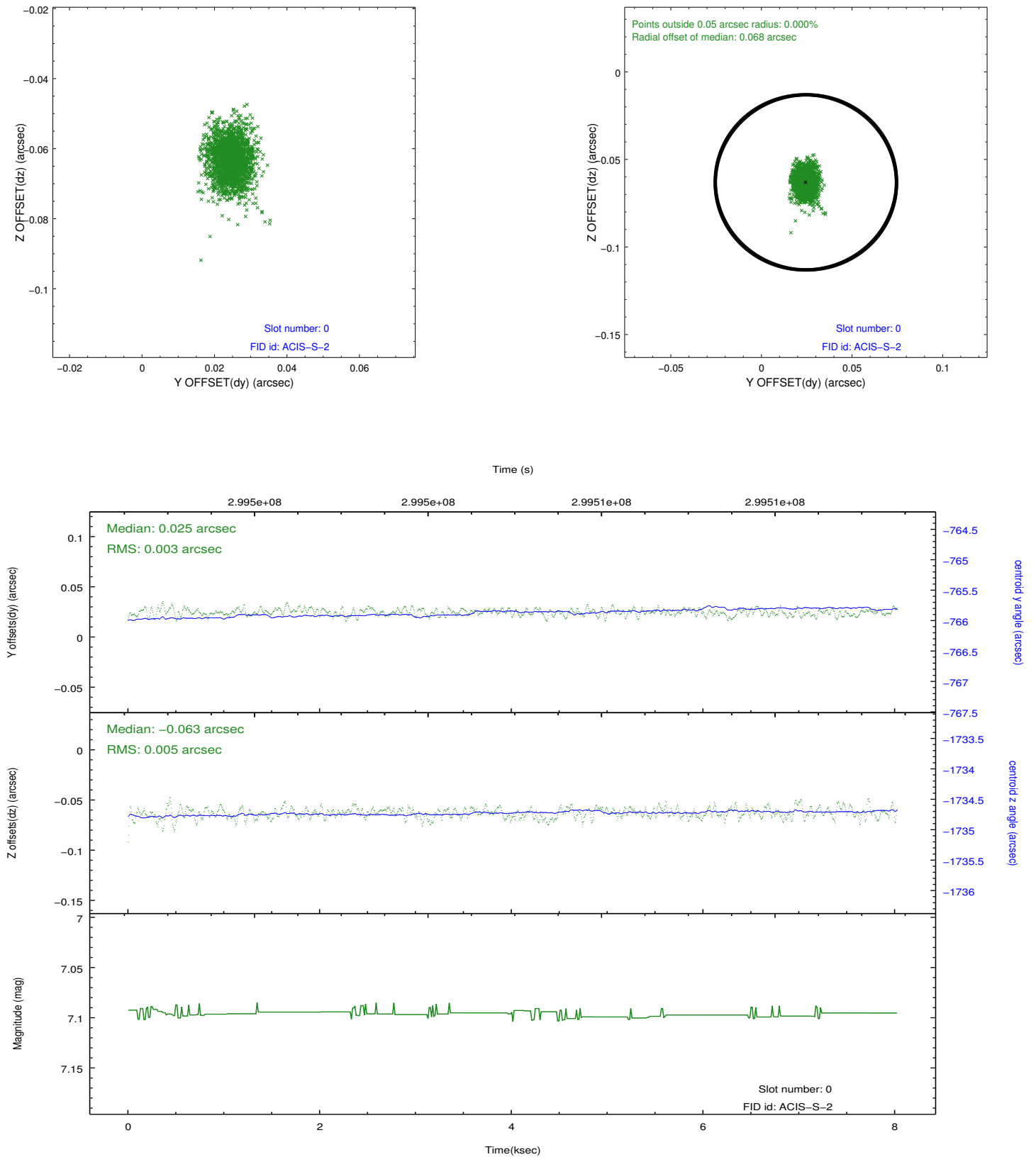


2.4.5 Slot 7

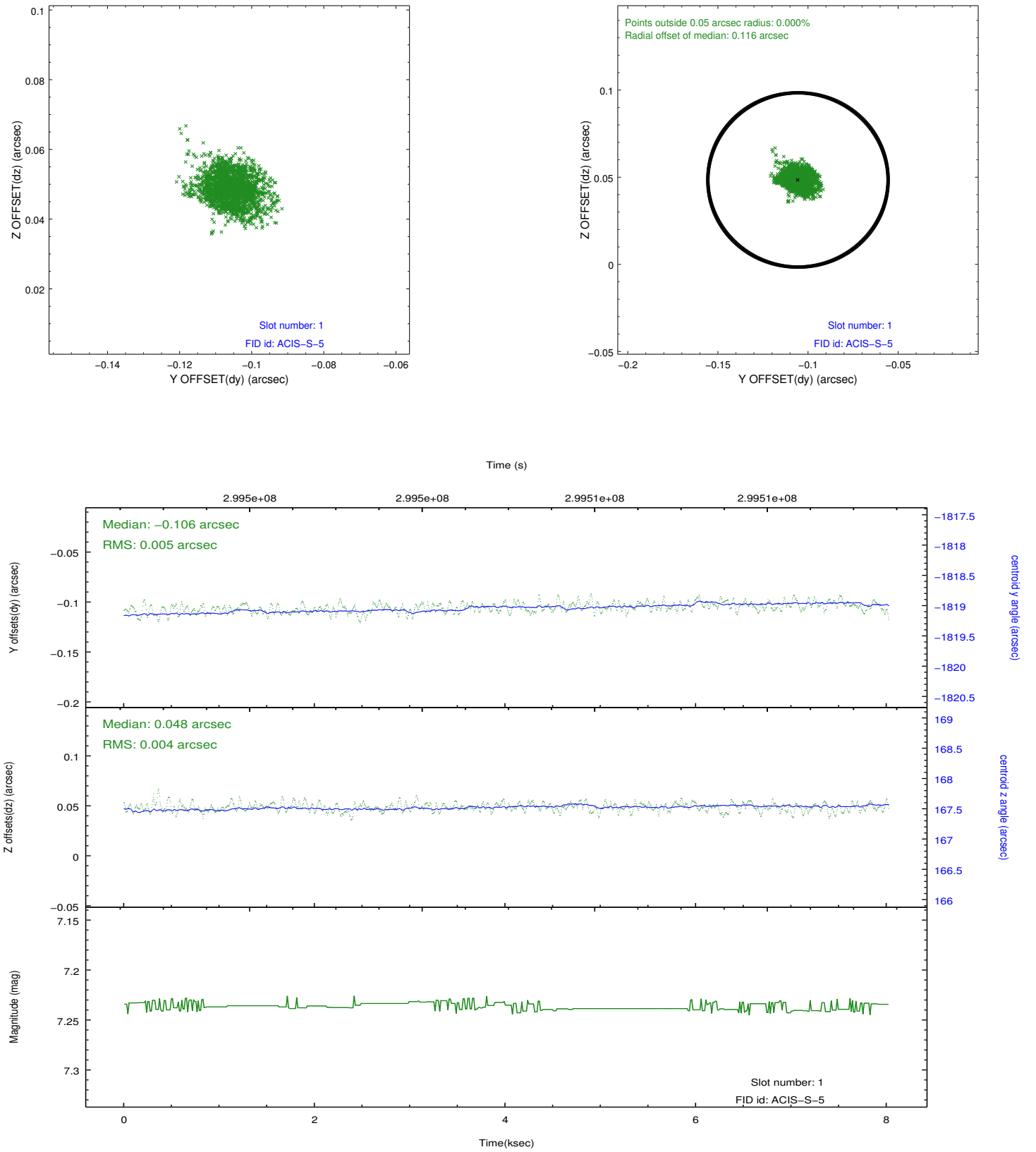


2.5 FID Slots

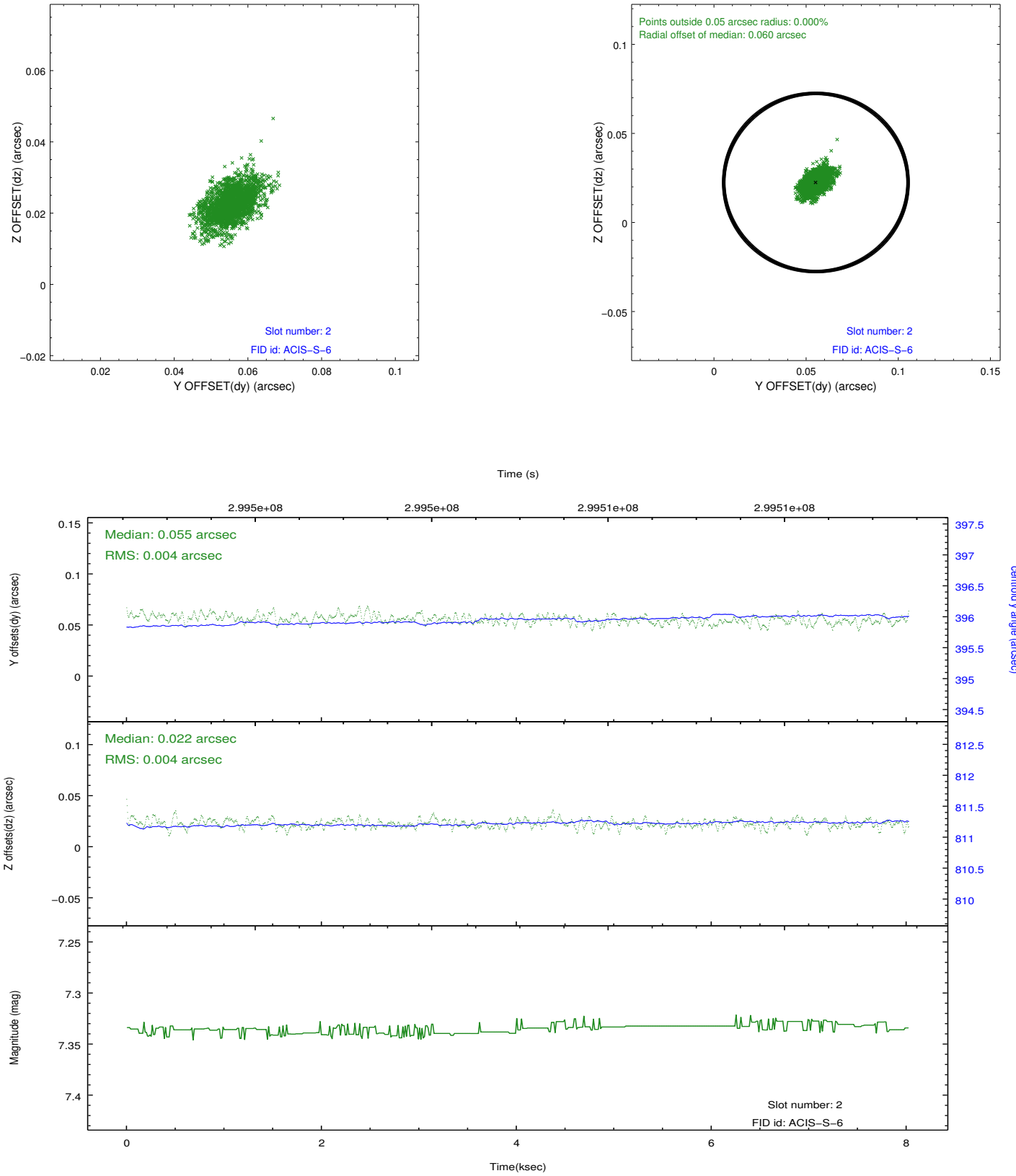
2.5.1 Slot 0



2.5.2 Slot 1



2.5.3 Slot 2



A Summary

A.1 Status

V&V Scientist	Jen Lauer
V&V Date (YYYY-MM-DD)	2012.04.27
V&V Edition	1
V&V Disposition and Status	OK
V&V Charge Time	6.97190005

A.2 Comments

Joint Proposal: NRAO