

V&V Reference Report

L2 ASCDS Version : 8.4.4

Observation 8060 - L2 Version 2
Chandra X-Ray Center

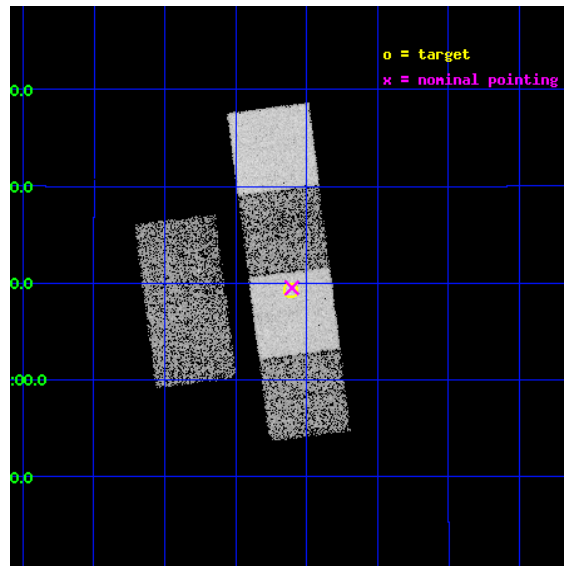
L2 Processing Date : May 10 2012

Contents

1	Front	2
2	OBI	3
2.1	OBI	3
2.1.1	Images	3
2.1.2	Bias	3
2.1.3	Parameters	4
2.1.4	Events	4
2.2	Compared Parameters	5
2.3	Aspect	6
2.4	Star Slots	9
2.4.1	Slot 3	9
2.4.2	Slot 4	10
2.4.3	Slot 5	11
2.4.4	Slot 6	12
2.4.5	Slot 7	13
2.5	FID Slots	14
2.5.1	Slot 0	14
2.5.2	Slot 1	15
2.5.3	Slot 2	16
A	Summary	17
A.1	Status	17
A.2	Comments	17

1 Front

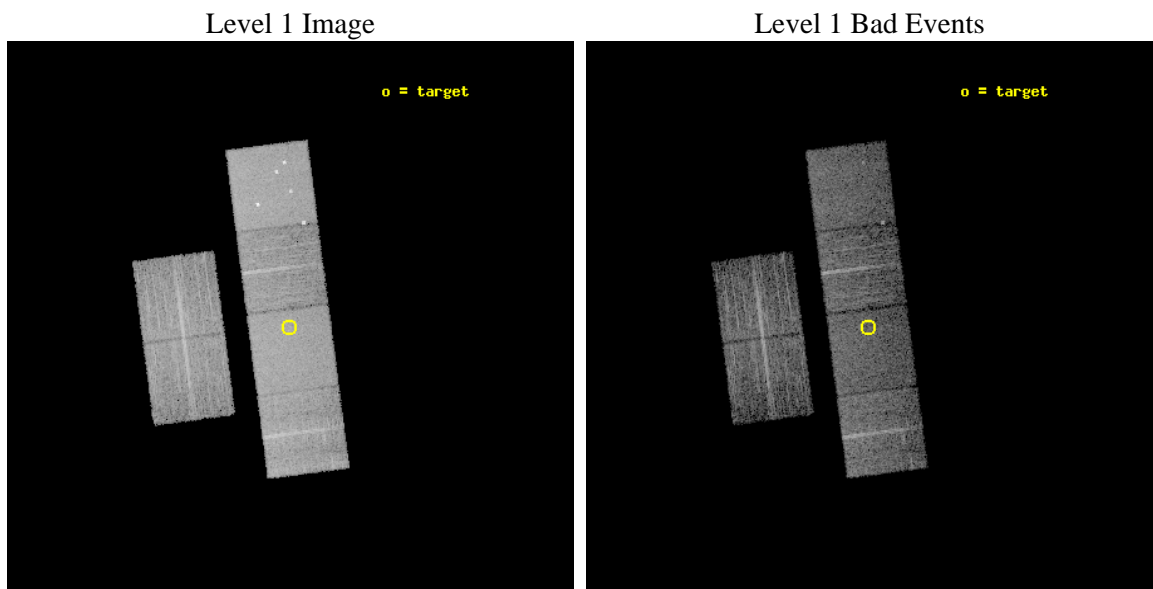
seq_num	900601	Sequence number
obs_id	8060	Observation id
title	The Duty Cycle of Supermassive Black Holes: X-raying Virgo	Proposa
observer	Prof Tommaso Treu	Principal investigator
object	1025	Source name
dtycle	0	
cycle	P	events from which exps? Prim/Second/Both
ra_targ	186.902917	Observer's specified target RA [deg]
dec_targ	8.154111	Observer's specified target Dec [deg]
ra_nom	186.90090221231	Nominal RA [deg]
dec_nom	8.1585344884281	Nominal Dec [deg]
roll_nom	82.55215155552	Nominal Roll [deg]
revision	2	Processing version of data
ontime	5157.2873134613	Sum of GTIs [s]
livetime	5091.9826361527	Livetime [s]
ontime2	5157.3283634186	Sum of GTIs [s]
ontime3	5157.1642034054	Sum of GTIs [s]
ontime5	5157.246283412	Sum of GTIs [s]
ontime6	5157.2052434087	Sum of GTIs [s]
ontime7	5157.2873134613	Sum of GTIs [s]
ontime8	5153.8821035624	Sum of GTIs [s]
l2events	83384	Number of level 2 events



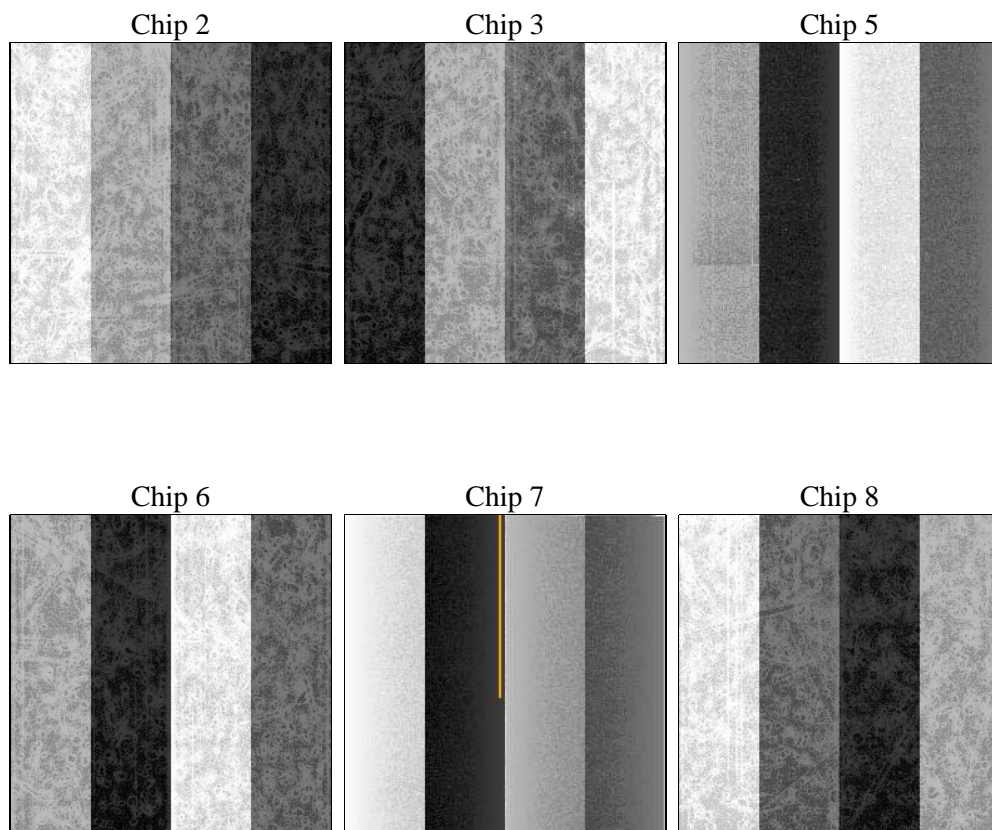
2 OBI

2.1 OBI

2.1.1 Images



2.1.2 Bias



2.1.3 Parameters

obi_num	1	Obi number	sched_exp_time	5400.000000	[s] Scheduled observation exposure time
ascdsver	8.4.4	Processing system revision	ontime	5157.2873134613	Sum of GTIs [s]
caldbver	4.4.9	 	ontime2	5157.3283634186	Sum of GTIs [s]
date	2012-05-10T07:56:31	Date and time of file creation	ontime3	5157.1642034054	Sum of GTIs [s]
revision	2	Processing version of data	ontime5	5157.246283412	Sum of GTIs [s]
			ontime6	5157.2052434087	Sum of GTIs [s]
			ontime7	5157.2873134613	Sum of GTIs [s]
			ontime8	5153.8821035624	Sum of GTIs [s]
			l1events	369247	Number of level 1 events

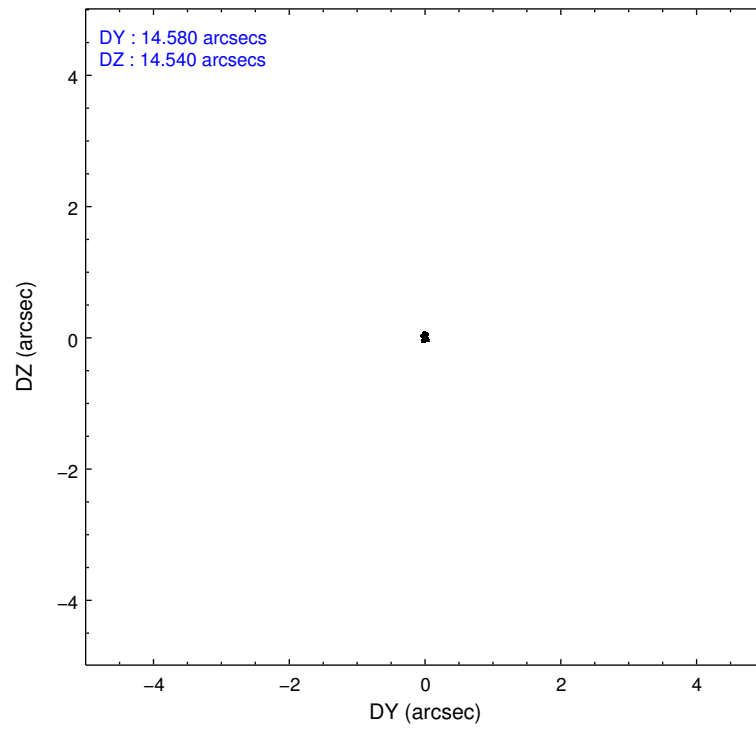
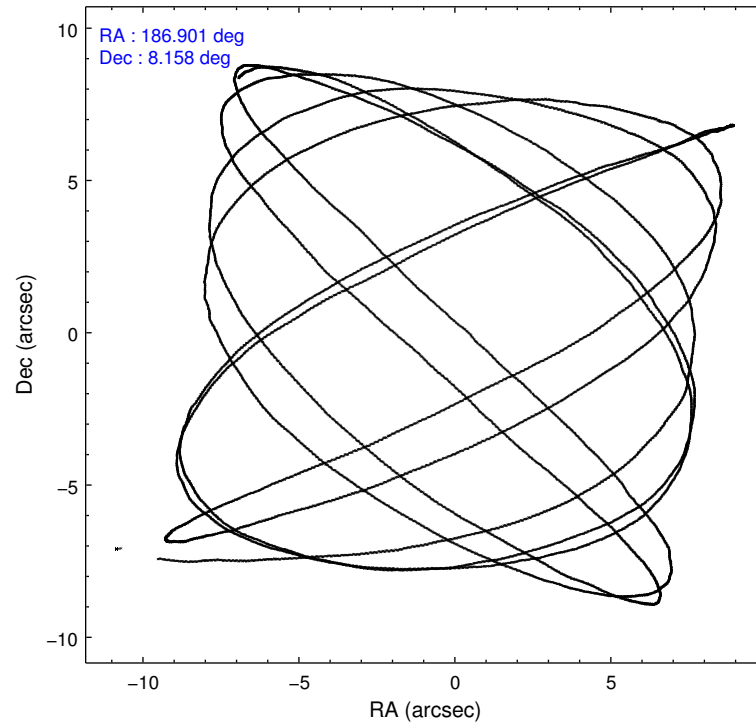
2.1.4 Events

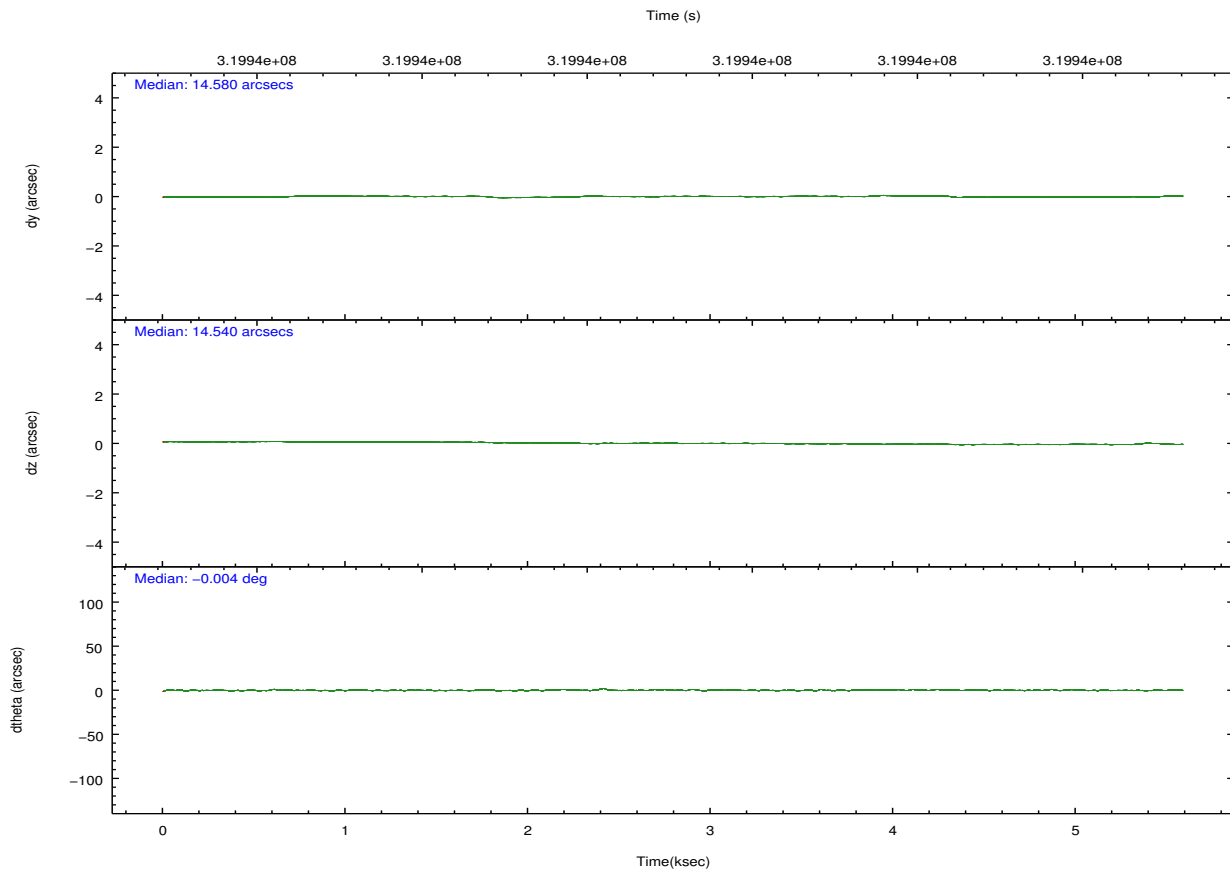
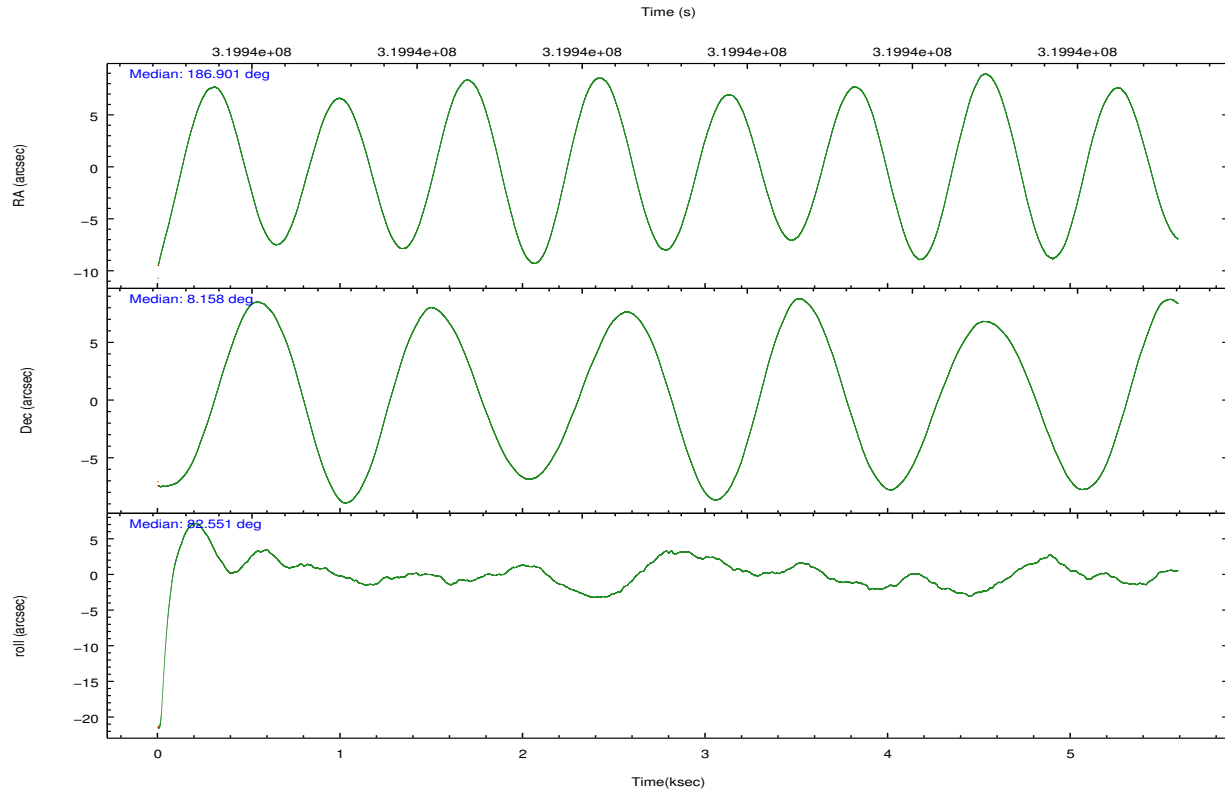
	ccd 2	ccd 3	ccd 5	ccd 6	ccd 7	ccd 8		ccd 2	ccd 3	ccd 5	ccd 6	ccd 7	ccd 8
level 1 events	53413	49865	80134	50036	69249	66550	grade 0 events	2522	2690	5435	2418	2562	4493
rejected events	47546	43716	42042	43935	40339	51996		4%	5%	6%	4%	3%	6%
rejected %	89%	87%	52%	87%	58%	78%	grade 1 events	31	27	231	21	70	45
								0%	0%	0%	0%	0%	0%
							grade 2 events	1254	1251	11050	1344	5842	3355
								2%	2%	13%	2%	8%	5%
							grade 3 events	532	557	1348	590	2445	1480
								0%	1%	1%	1%	3%	2%
							grade 4 events	584	569	1181	533	2344	1377
								1%	1%	1%	1%	3%	2%
							grade 5 events	2099	2233	5428	2358	6515	3102
								3%	4%	6%	4%	9%	4%
							grade 6 events	983	1086	19125	1223	15751	3857
								1%	2%	23%	2%	22%	5%
							grade 7 events	45408	41452	36336	41549	33720	48841
								85%	83%	45%	83%	48%	73%

2.2 Compared Parameters

Parameter	Planned	Actual	Parameter	Planned	Actual
Instrument	ACIS	ACIS	Obspar format version number	7	7
Detector	ACIS-235678	ACIS-235678	Obspar file type	PREDICTED	ACTUAL
Grating	NONE	NONE	Obspar update status	NONE	UPDATED
Data mode	FAINT	FAINT	CCD I0 on	N	N
Observation mode	POINTING	POINTING	CCD I1 on	N	N
[deg] Pointing RA	186.911845	186.9009022123084	CCD I2 on	O1	Y
[deg] Pointing Dec	8.133424	8.158534488428062	CCD I3 on	O2	Y
[deg] Pointing Roll	82.394024	82.55215155552042	CCD S0 on	N	N
[mm] SIM focus pos	-0.684267	-0.6828225247311905	CCD S1 on	O3	Y
[mm] SIM defocus	0	0.001444936568705701	CCD S2 on	Y	Y
[mm] SIM translation stage pos	-190.132523	-190.1425803651734	CCD S3 on	Y	Y
[mm] SIM translation stage offset	0	0.01005778216563158	CCD S4 on	O4	Y
[s] Observation start time (MET)	319934910.184000	319934350.20382	CCD S5 on	N	N
Observation start date	2008-02-20T22:47:25	2008-02-20T22:39:10	Number of optional ACIS chips dropped	0	0
[s] Observation end time (MET)	319940310.184000	319940480.72911	On-chip summing requested	N	N
Observation end date	2008-02-21T00:17:25	2008-02-21T00:21:20	Subarray requested	NONE	NONE
Read mode	TIMED	TIMED	Alternating exposures requested	N	N
			[s] Primary exposure time	0.000000	3.2

2.3 Aspect



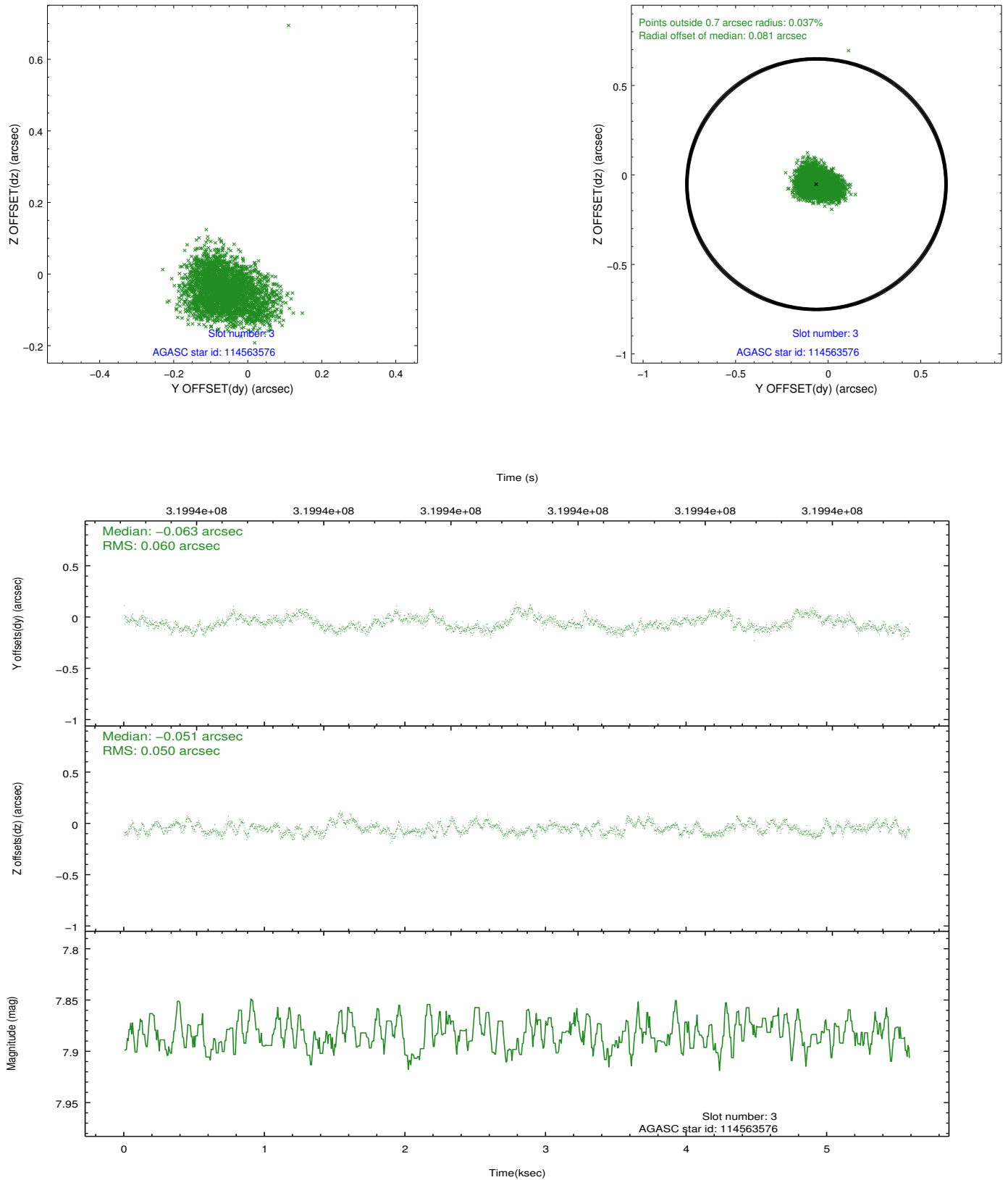


Slot Statistics

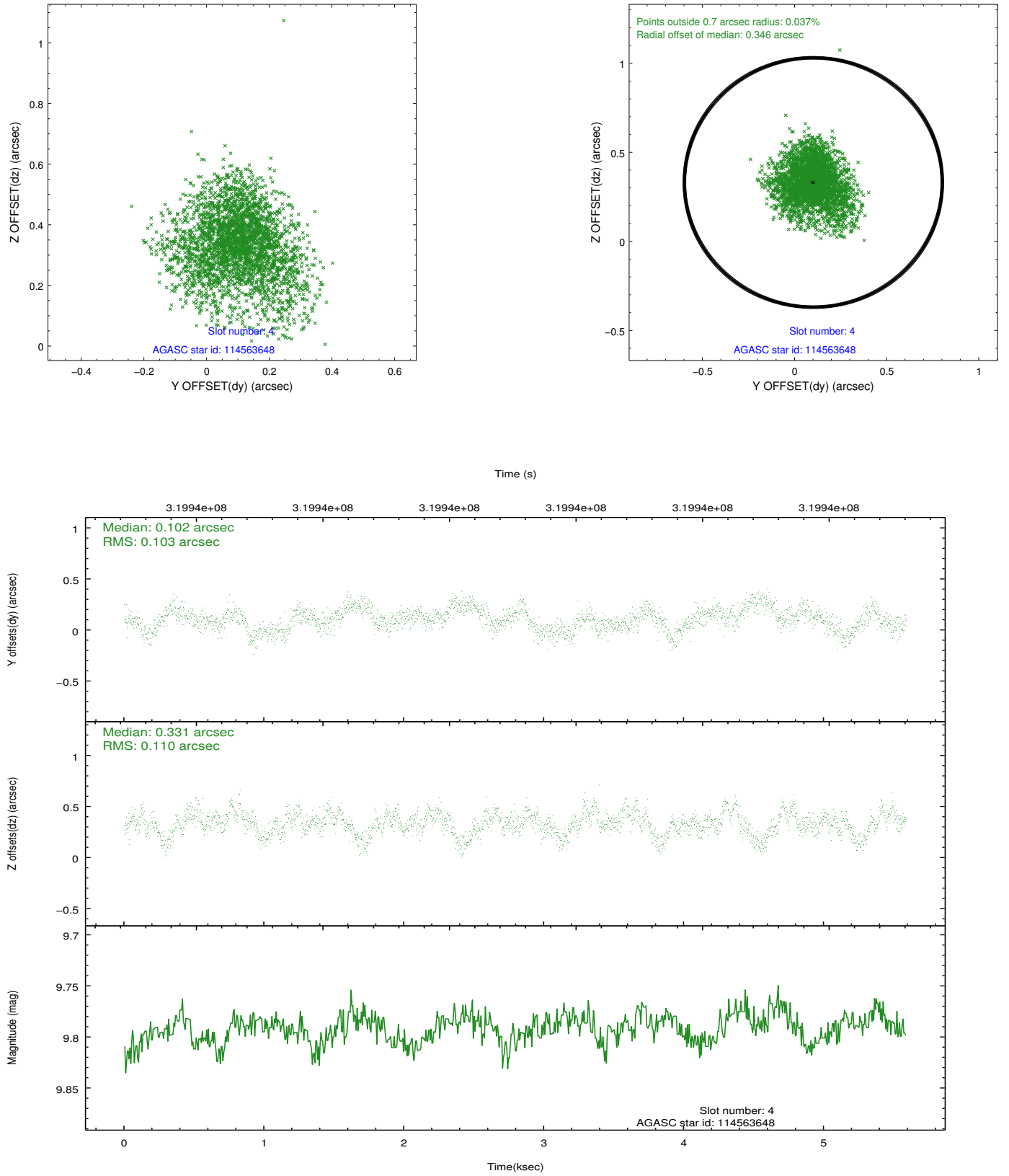
slot	status	id	mag	n_pts	med_dy	med_dz	dr1	dr2	ra	dec	mean_y	mean_z
0	FID	ACIS-S-2	7.10	1363	-0.090	-0.050	0.006	0.010	0.000000	0.000000	-767.62	-1735.92
1	FID	ACIS-S-4	7.19	1363	0.211	0.057	0.006	0.010	0.000000	0.000000	2145.46	171.57
2	FID	ACIS-S-5	7.22	1363	-0.153	0.002	0.006	0.010	0.000000	0.000000	-1819.16	166.39
3	GUIDE	114563576	7.88	2726	-0.063	-0.051	0.082	0.130	186.867039	8.012388	-453.22	101.36
4	GUIDE	114563648	9.79	2722	0.102	0.331	0.162	0.256	187.009208	7.938475	-649.49	-436.30
5	GUIDE	114565080	10.20	2722	0.069	-0.101	0.122	0.206	186.537681	7.759404	-1510.78	1144.76
6	GUIDE	114565200	10.39	2718	0.152	-0.121	0.220	0.346	186.402327	7.577354	-2224.38	1538.20
7	GUIDE	114565400	6.30	2725	-0.259	-0.036	0.074	0.114	186.925333	8.610343	1707.12	180.32

2.4 Star Slots

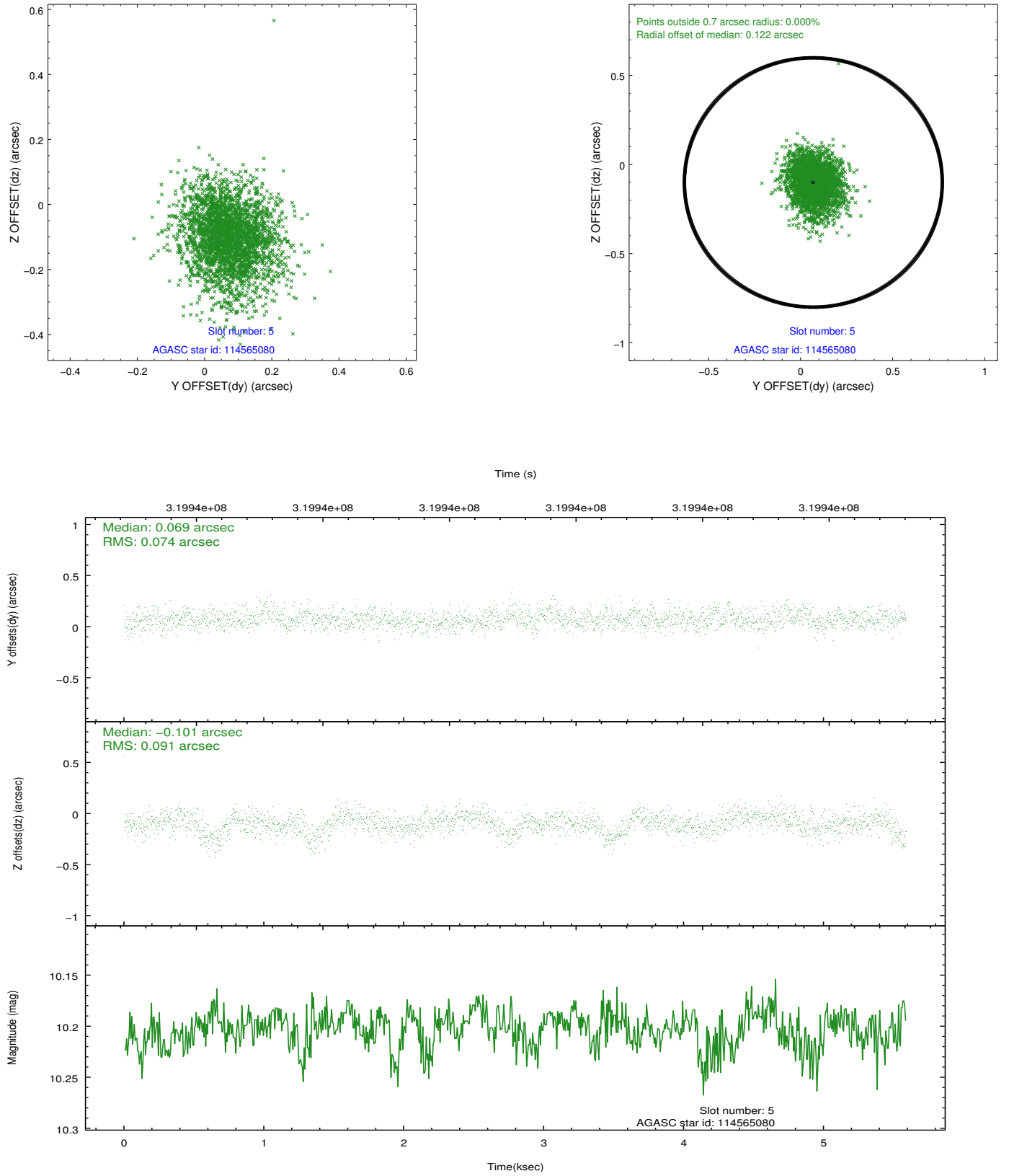
2.4.1 Slot 3



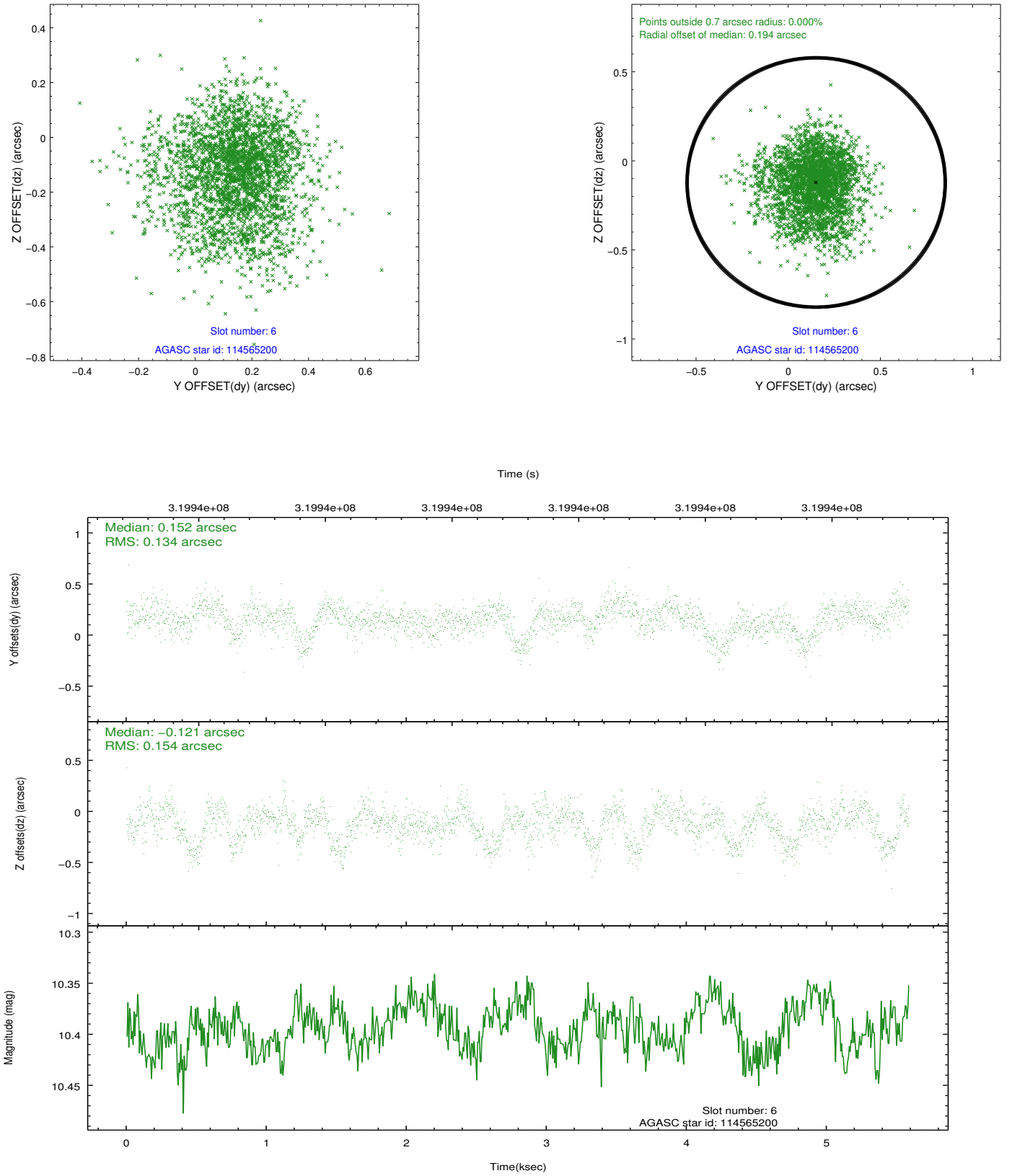
2.4.2 Slot 4



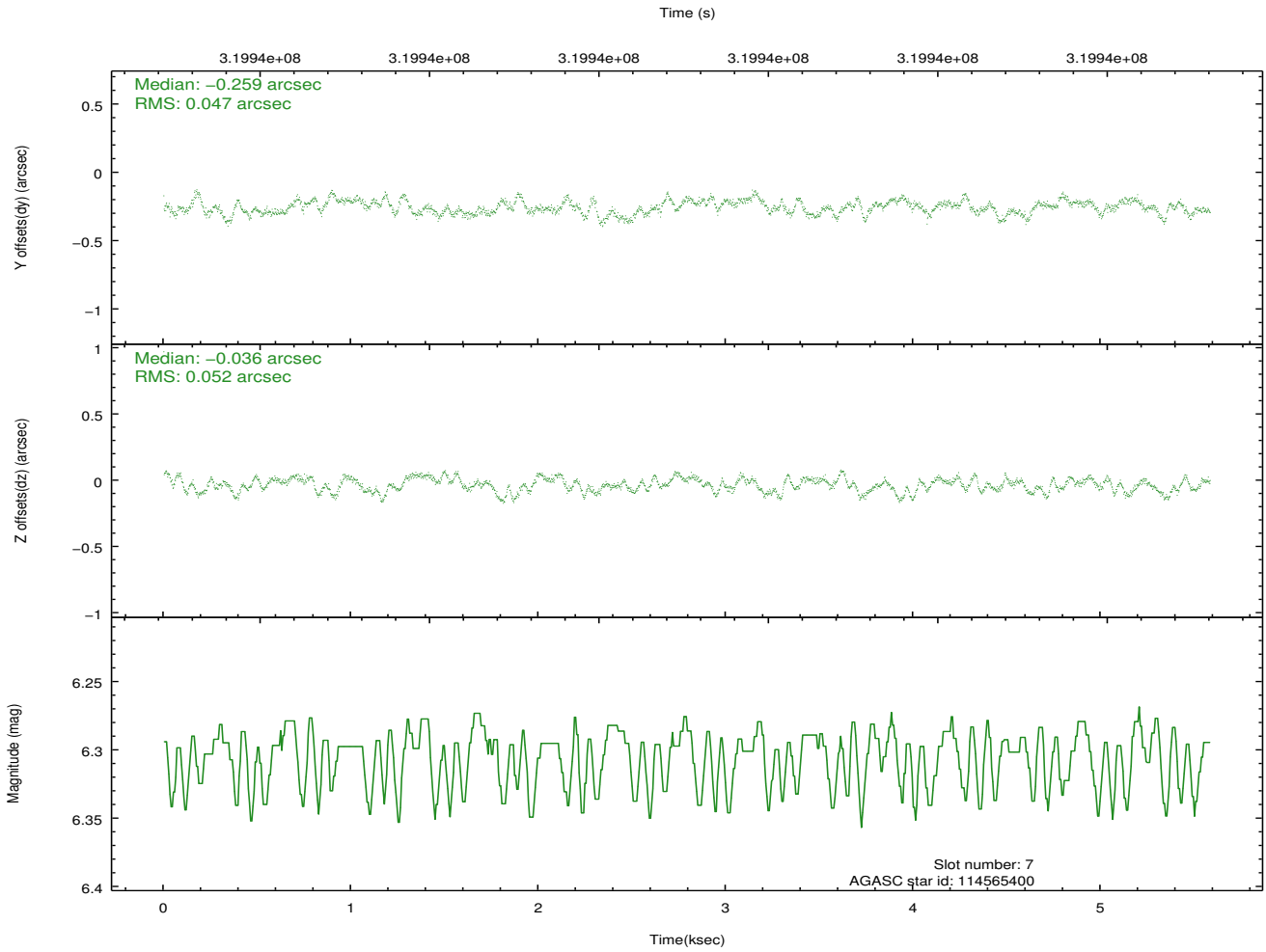
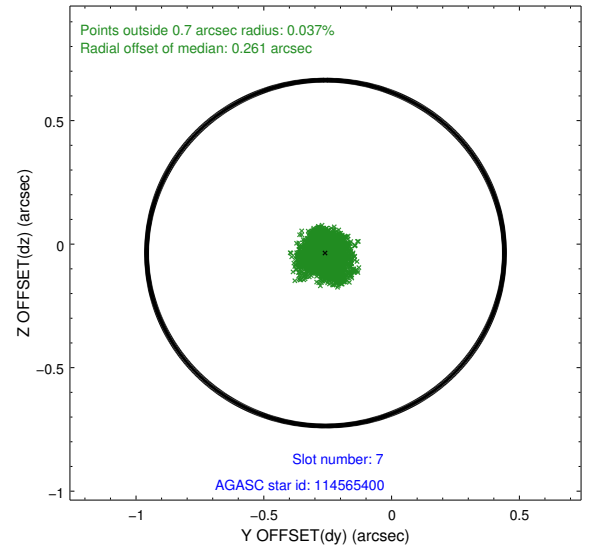
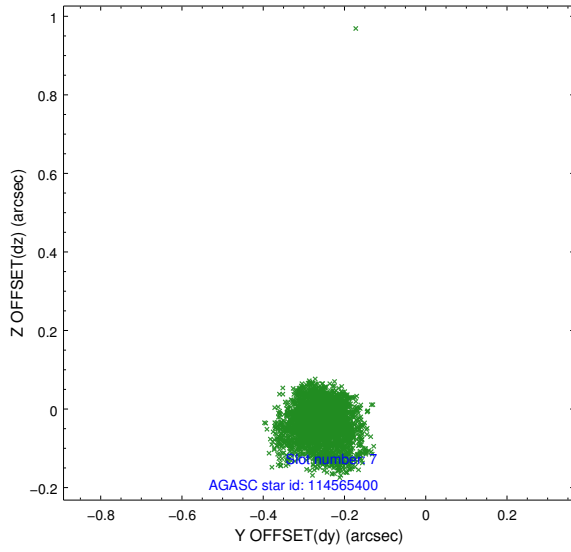
2.4.3 Slot 5



2.4.4 Slot 6

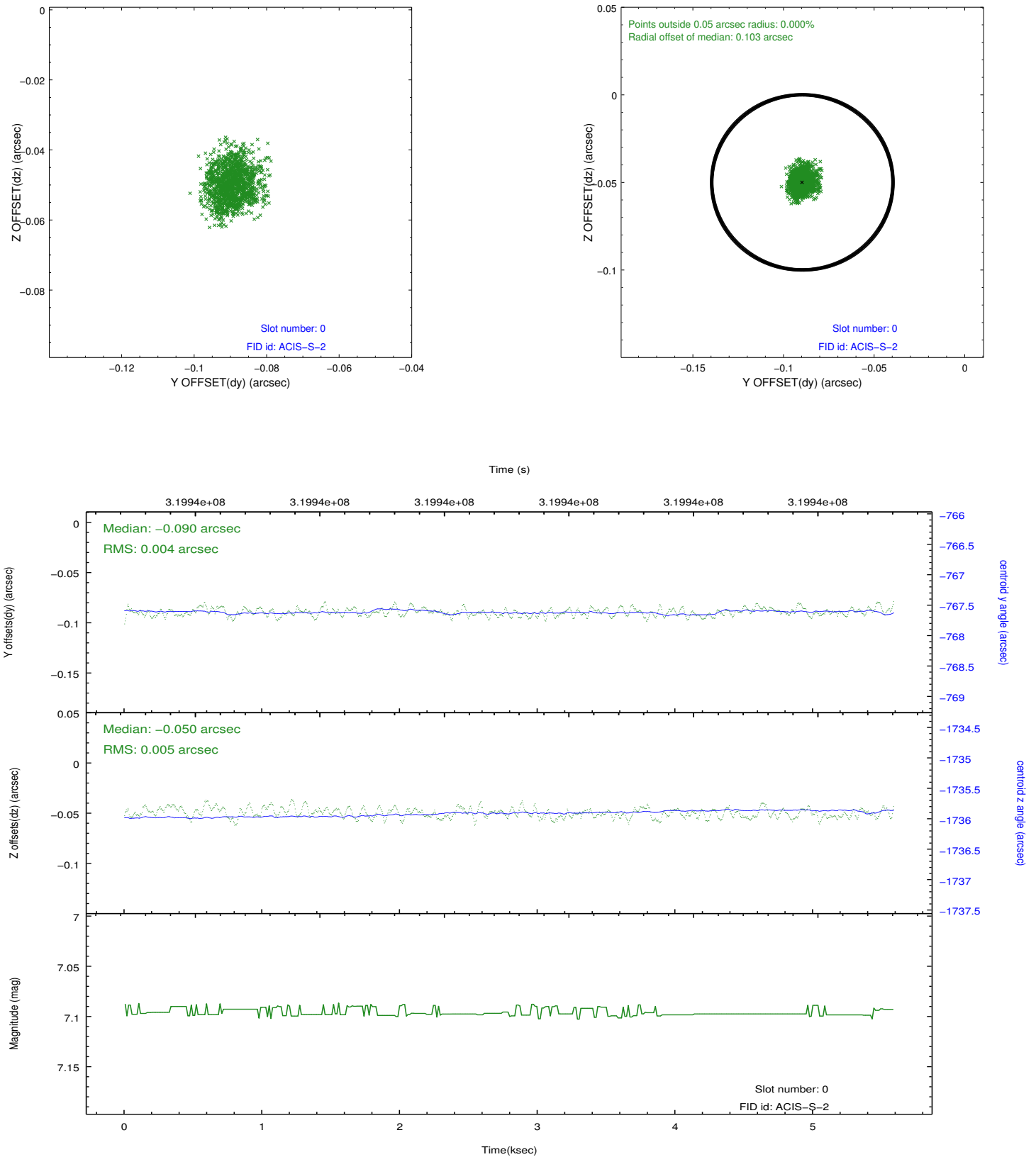


2.4.5 Slot 7

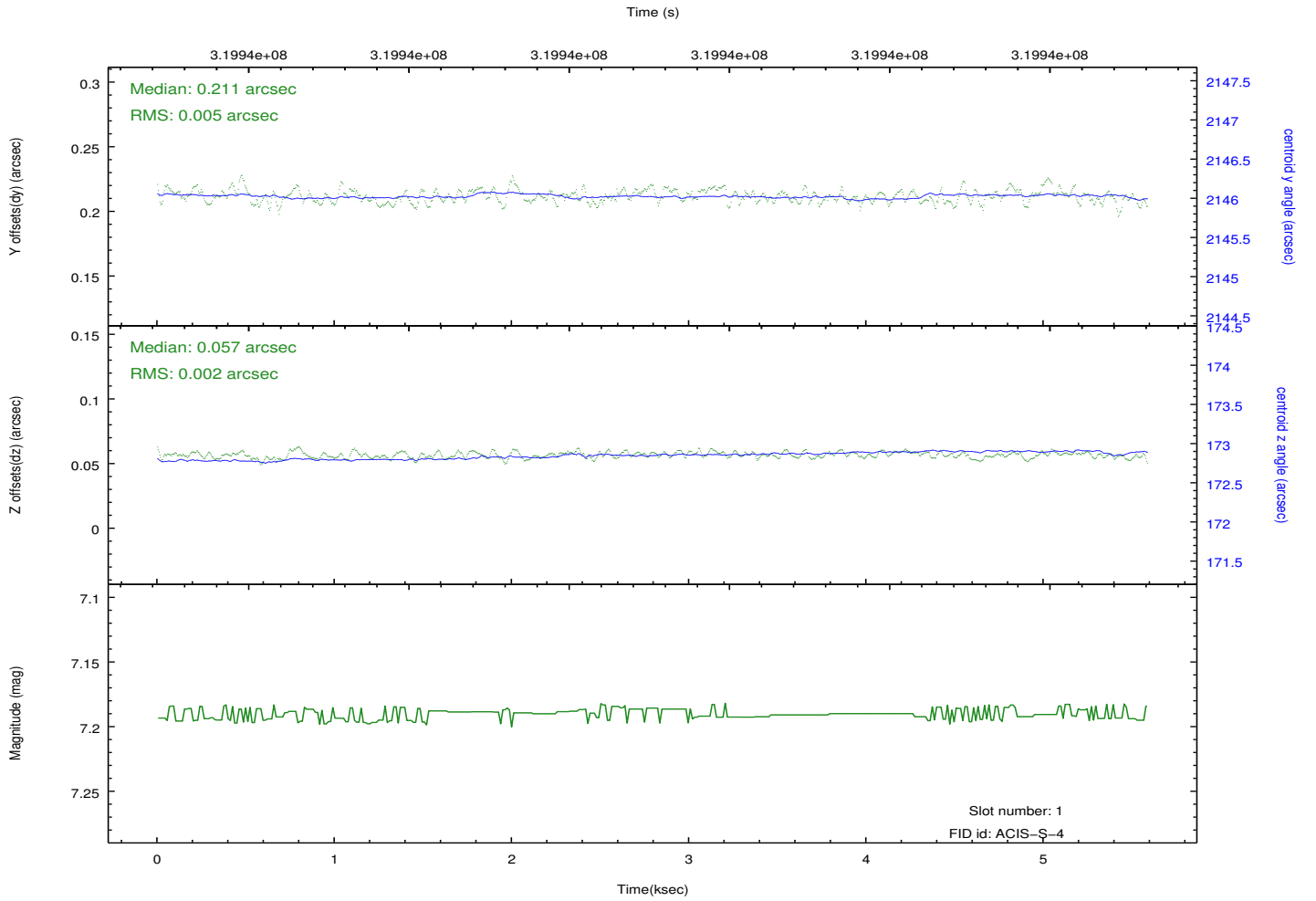
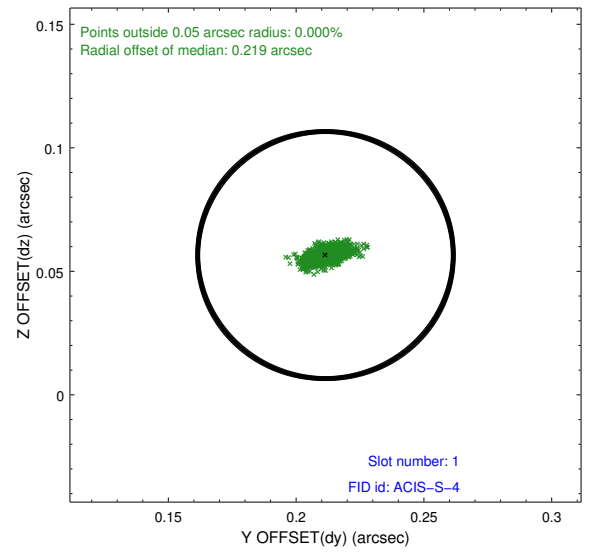
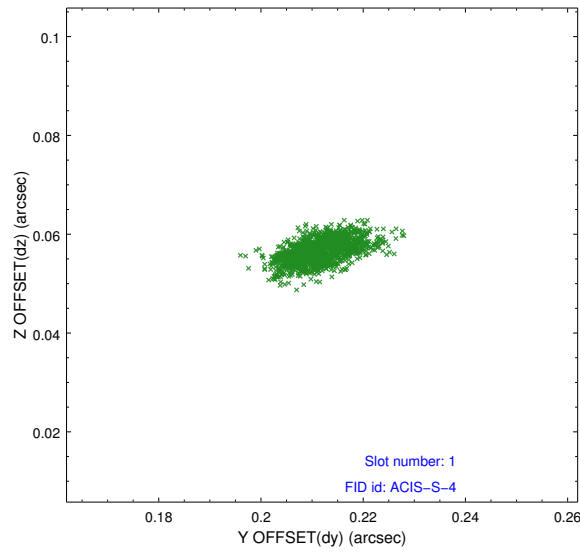


2.5 FID Slots

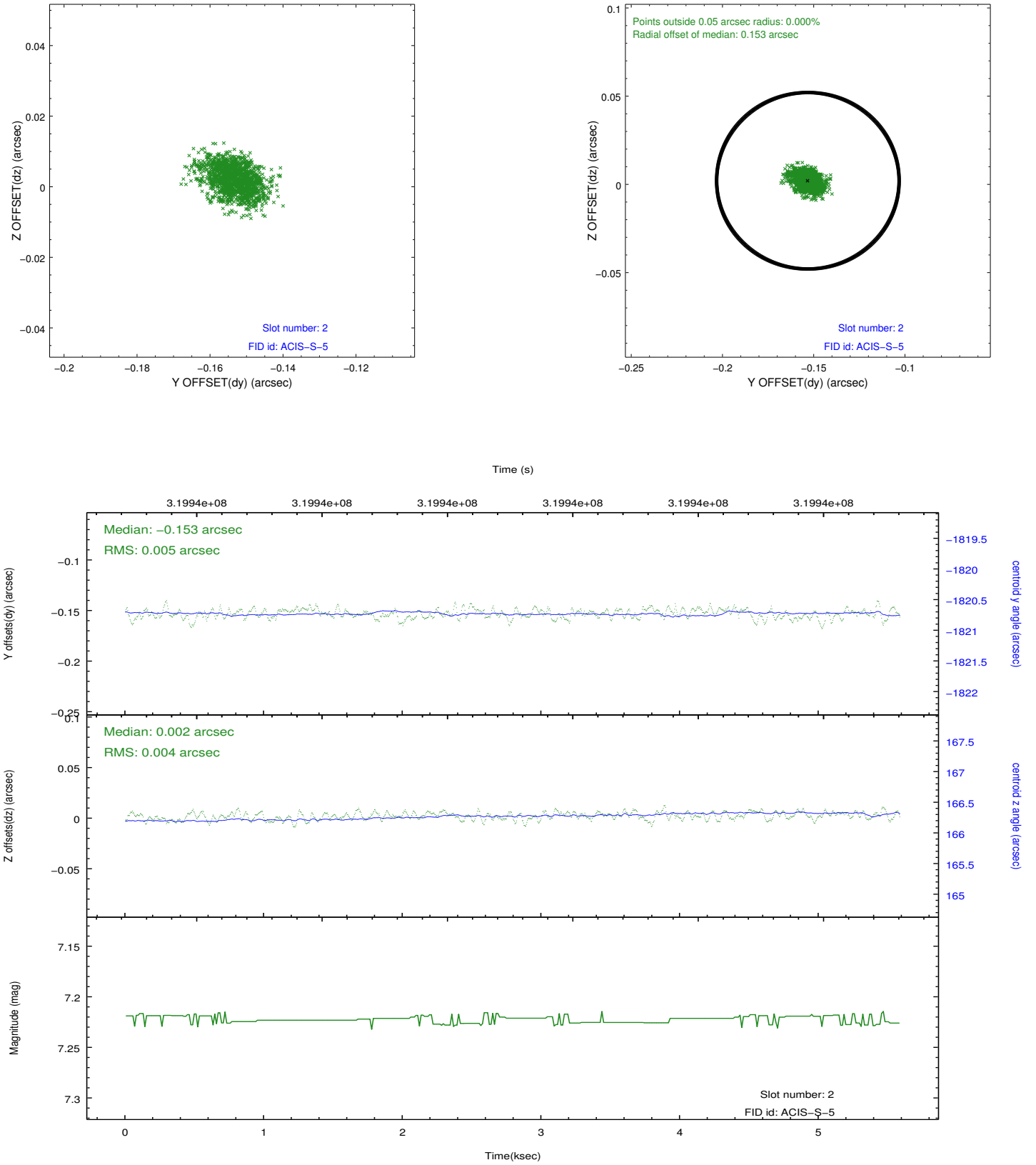
2.5.1 Slot 0



2.5.2 Slot 1



2.5.3 Slot 2



A Summary

A.1 Status

V&V Scientist	Jen Lauer
V&V Date (YYYY-MM-DD)	2012.05.13
V&V Edition	1
V&V Disposition and Status	OK
V&V Charge Time	5.15839998

A.2 Comments

Joint Proposal: Spitzer