

V&V Reference Report

L2 ASCDS Version : 8.4.4

Observation 8030 - L2 Version 3
Chandra X-Ray Center

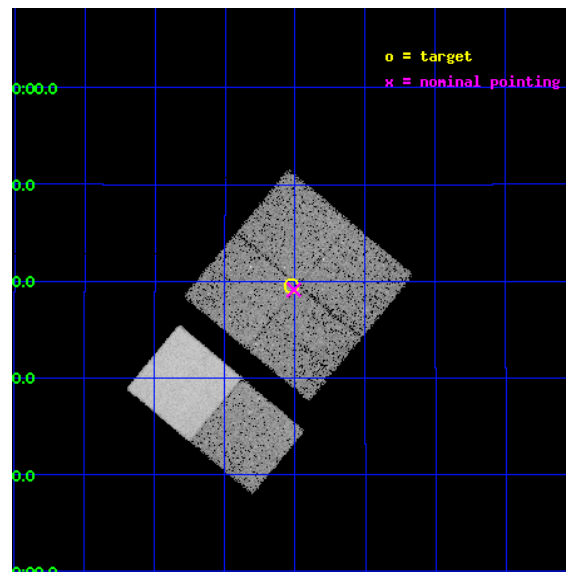
L2 Processing Date : Apr 24 2012

Contents

1	Front	2
2	OBI	3
2.1	OBI	3
2.1.1	Images	3
2.1.2	Bias	3
2.1.3	Parameters	4
2.1.4	Events	4
2.2	Compared Parameters	5
2.3	Aspect	6
2.4	Star Slots	9
2.4.1	Slot 3	9
2.4.2	Slot 4	10
2.4.3	Slot 5	11
2.4.4	Slot 6	12
2.4.5	Slot 7	13
2.5	FID Slots	14
2.5.1	Slot 0	14
2.5.2	Slot 1	15
2.5.3	Slot 2	16
A	Summary	17
A.1	Status	17
A.2	Comments	17

1 Front

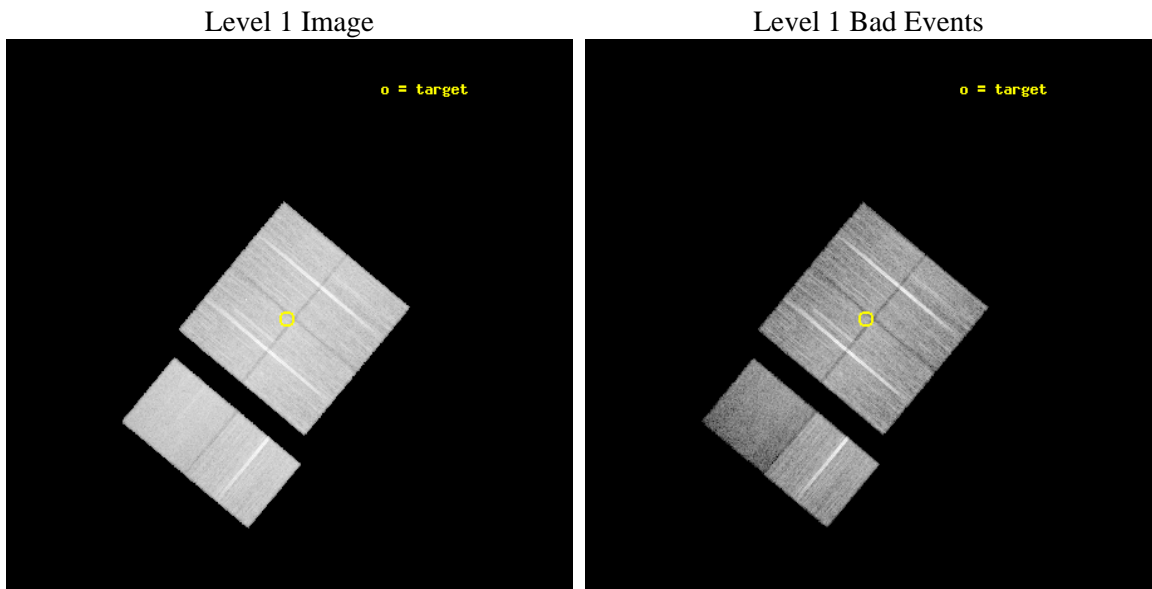
seq_num	900574	Sequence number
obs_id	8030	Observation id
title	Discovering the absorbed AGN population responsible for the hard X-ray background	Proposal title
observer	Ms Simona Soldi	Principal investigator
object	IGR J1305+1139	Source name
dtcycle	0	
cycle	P	events from which exps? Prim/Second/Both
ra_targ	196.381667	Observer's specified target RA [deg]
dec_targ	11.658778	Observer's specified target Dec [deg]
ra_nom	196.37720813755	Nominal RA [deg]
dec_nom	11.652017525027	Nominal Dec [deg]
roll_nom	219.79167134326	Nominal Roll [deg]
revision	3	Processing version of data
ontime	20040.338996708	Sum of GTIs [s]
livetime	19786.576157489	Livetime [s]
ontime0	20040.215876698	Sum of GTIs [s]
ontime1	20040.256916702	Sum of GTIs [s]
ontime2	20040.297956705	Sum of GTIs [s]
ontime3	20040.338996708	Sum of GTIs [s]
ontime6	20040.421076715	Sum of GTIs [s]
ontime7	20040.380036712	Sum of GTIs [s]
l2events	127506	Number of level 2 events



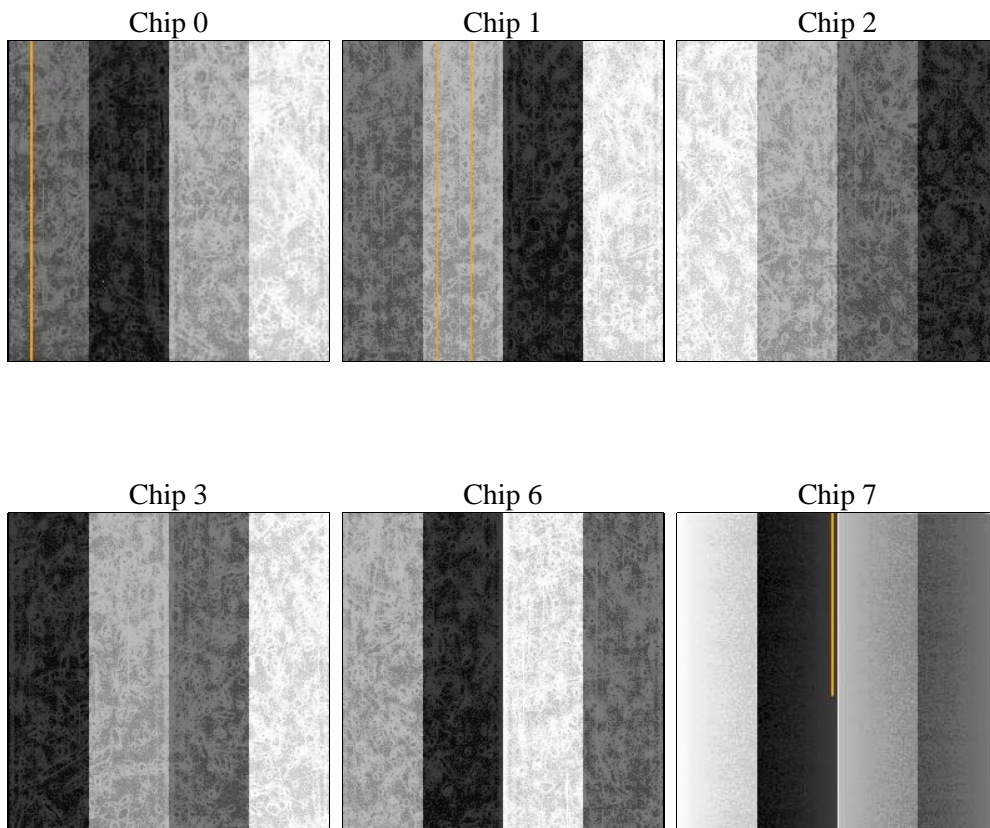
2 OBI

2.1 OBI

2.1.1 Images



2.1.2 Bias



2.1.3 Parameters

obi_num	1	Obi number	sched_exp_time	20000.000000	[s] Scheduled observation exposure time
ascdsver	8.4.4	Processing system revision	ontime	20040.338996708	Sum of GTIs [s]
caldsver	4.4.9	 	ontime0	20040.215876698	Sum of GTIs [s]
date	2012-04-24T09:15:48	Date and time of file creation	ontime1	20040.256916702	Sum of GTIs [s]
revision	3	Processing version of data	ontime2	20040.297956705	Sum of GTIs [s]
			ontime3	20040.338996708	Sum of GTIs [s]
			ontime6	20040.421076715	Sum of GTIs [s]
			ontime7	20040.380036712	Sum of GTIs [s]
			l1events	878078	Number of level 1 events

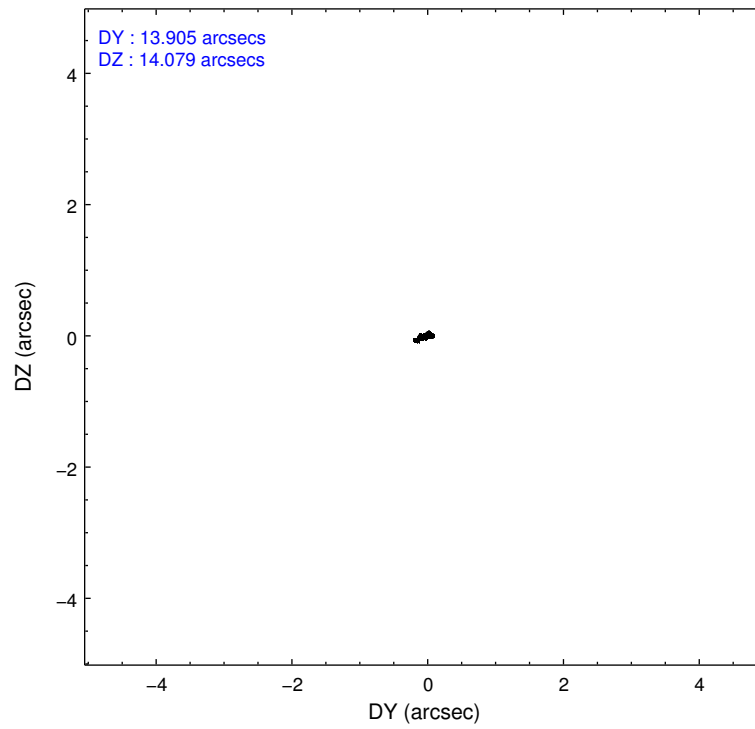
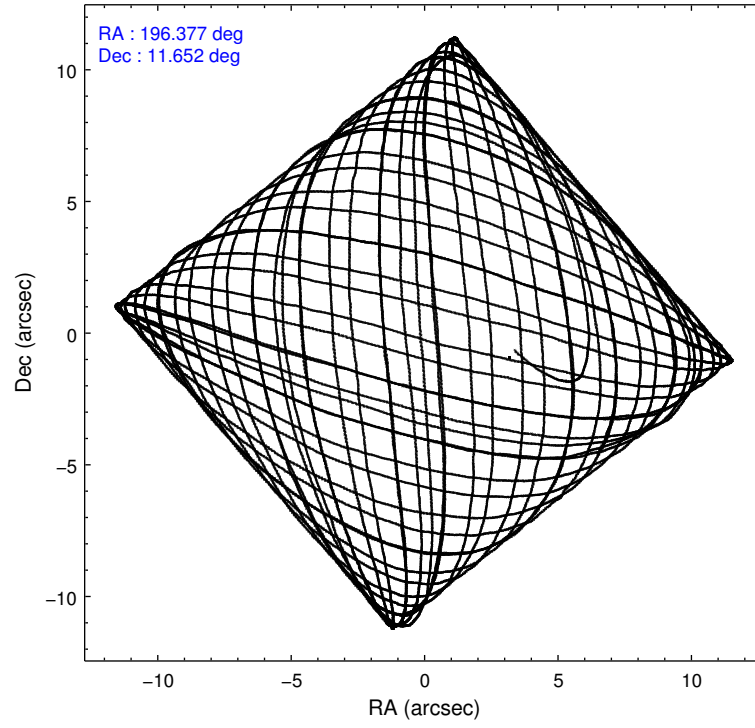
2.1.4 Events

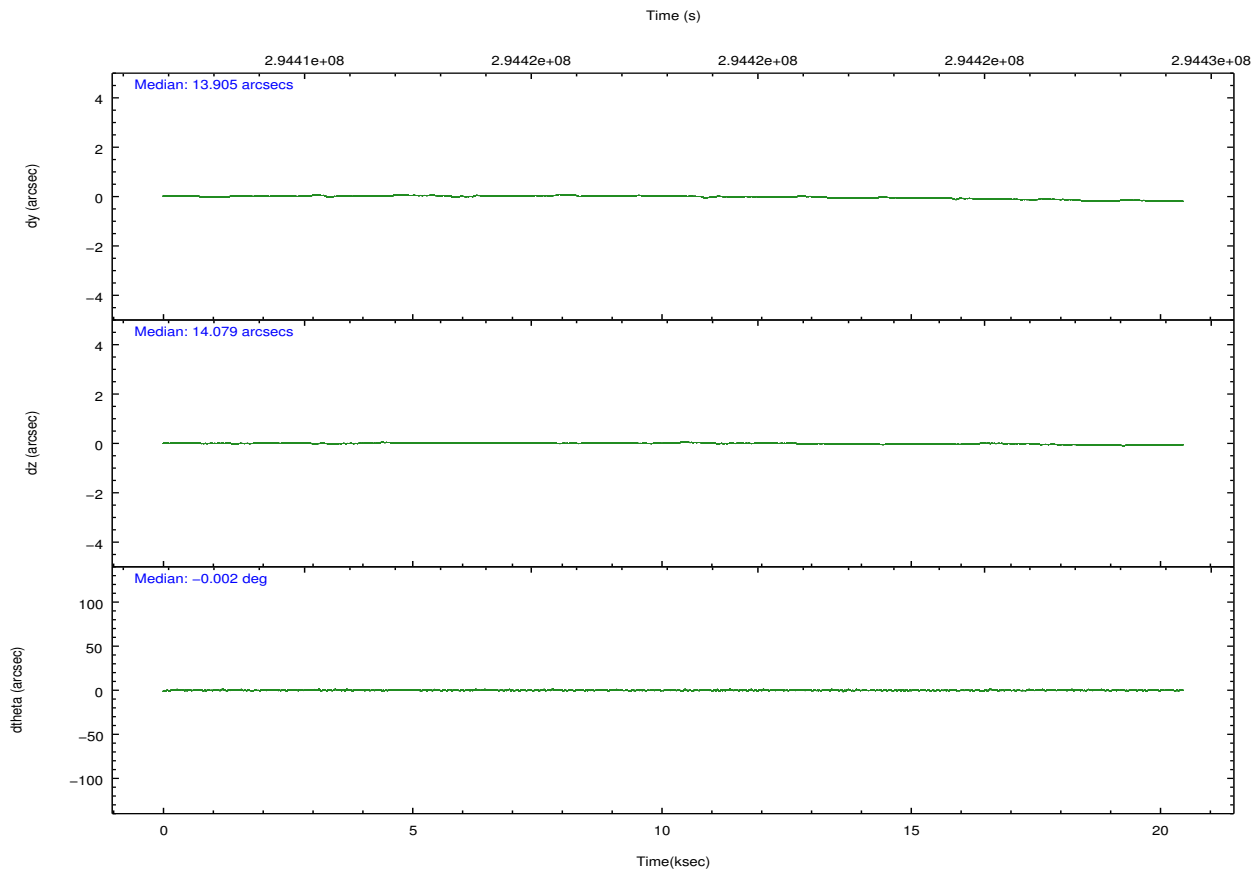
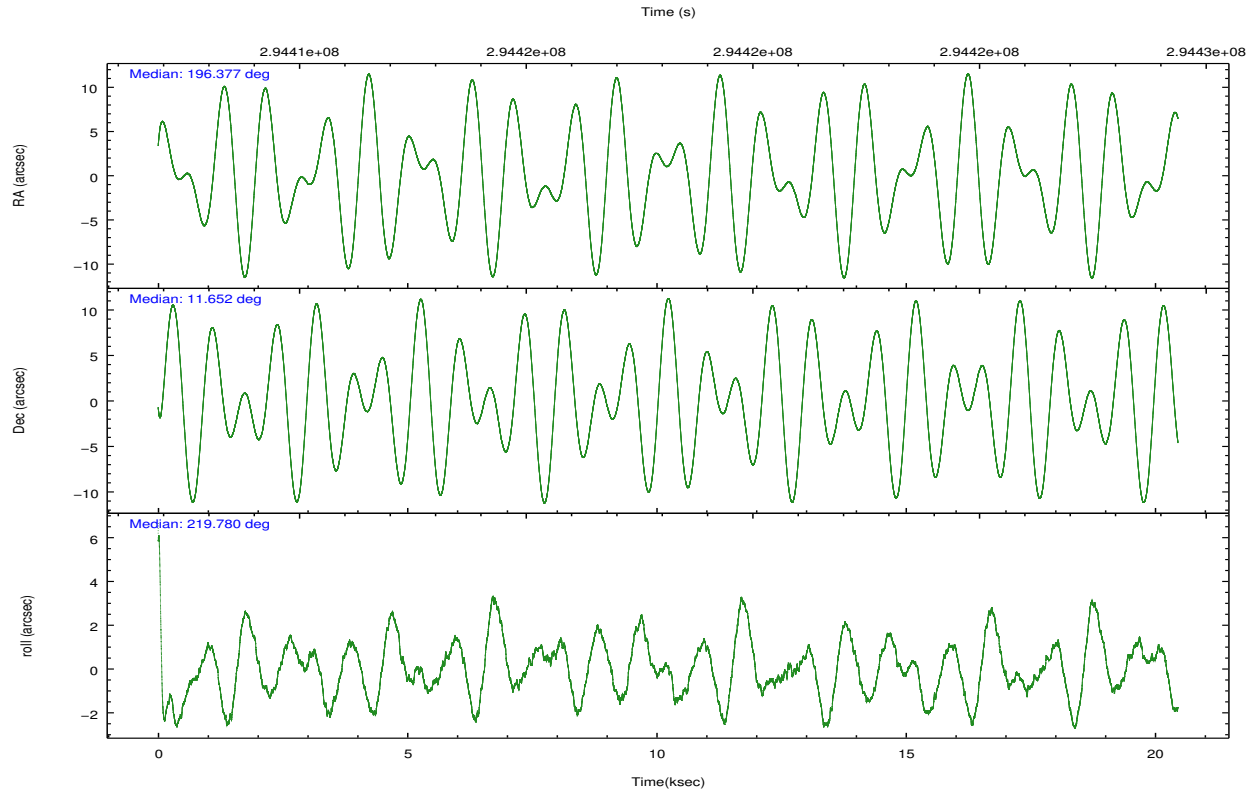
	ccd 0	ccd 1	ccd 2	ccd 3	ccd 6	ccd 7		ccd 0	ccd 1	ccd 2	ccd 3	ccd 6	ccd 7
level 1 events	142730	139196	156645	144429	153555	141523	grade 0 events	5343	5433	5417	5239	5579	7512
rejected events	128331	124000	142453	130565	138193	71803		3%	3%	3%	3%	3%	5%
rejected %	89%	89%	90%	90%	89%	50%	grade 1 events	69	51	74	86	72	233
								0%	0%	0%	0%	0%	0%
							grade 2 events	3350	3268	3394	2902	3387	14725
								2%	2%	2%	2%	2%	10%
							grade 3 events	1685	1772	1527	1660	1659	6576
								1%	1%	0%	1%	1%	4%
							grade 4 events	1501	1668	1486	1527	1610	6394
								1%	1%	0%	1%	1%	4%
							grade 5 events	4188	4873	3915	5034	5274	14799
								2%	3%	2%	3%	3%	10%
							grade 6 events	2524	3057	2374	2542	3136	34534
								1%	2%	1%	1%	2%	24%
							grade 7 events	124070	119074	138458	125439	132838	56750
								86%	85%	88%	86%	86%	40%

2.2 Compared Parameters

Parameter	Planned	Actual	Parameter	Planned	Actual
Instrument	ACIS	ACIS	Obspar format version number	7	7
Detector	ACIS-012367	ACIS-012367	Obspar file type	PREDICTED	ACTUAL
Grating	NONE	NONE	Obspar update status	NONE	UPDATED
Data mode	FAINT	FAINT	CCD I0 on	Y	Y
Observation mode	POINTING	POINTING	CCD I1 on	Y	Y
[deg] Pointing RA	196.386777	196.3772081375468	CCD I2 on	Y	Y
[deg] Pointing Dec	11.677834	11.65201752502652	CCD I3 on	Y	Y
[deg] Pointing Roll	219.581047	219.7916713432642	CCD S0 on	N	N
[mm] SIM focus pos	-0.782348	-0.7809083437167272	CCD S1 on	N	N
[mm] SIM defocus	0	0.001439871863259334	CCD S2 on	O2	Y
[mm] SIM translation stage pos	-233.592463	-233.5874344608287	CCD S3 on	O1	Y
[mm] SIM translation stage offset	0	-0.005018542100998502	CCD S4 on	N	N
[s] Observation start time (MET)	294408355.184000	294407212.89997	CCD S5 on	N	N
Observation start date	2007-05-01T12:04:50	2007-05-01T11:46:52	Number of optional ACIS chips dropped	0	0
[s] Observation end time (MET)	294428355.184000	294429867.96355	On-chip summing requested	N	N
Observation end date	2007-05-01T17:38:10	2007-05-01T18:04:27	Subarray requested	NONE	NONE
Read mode	TIMED	TIMED	Alternating exposures requested	N	N
			[s] Primary exposure time	0.000000	3.2

2.3 Aspect



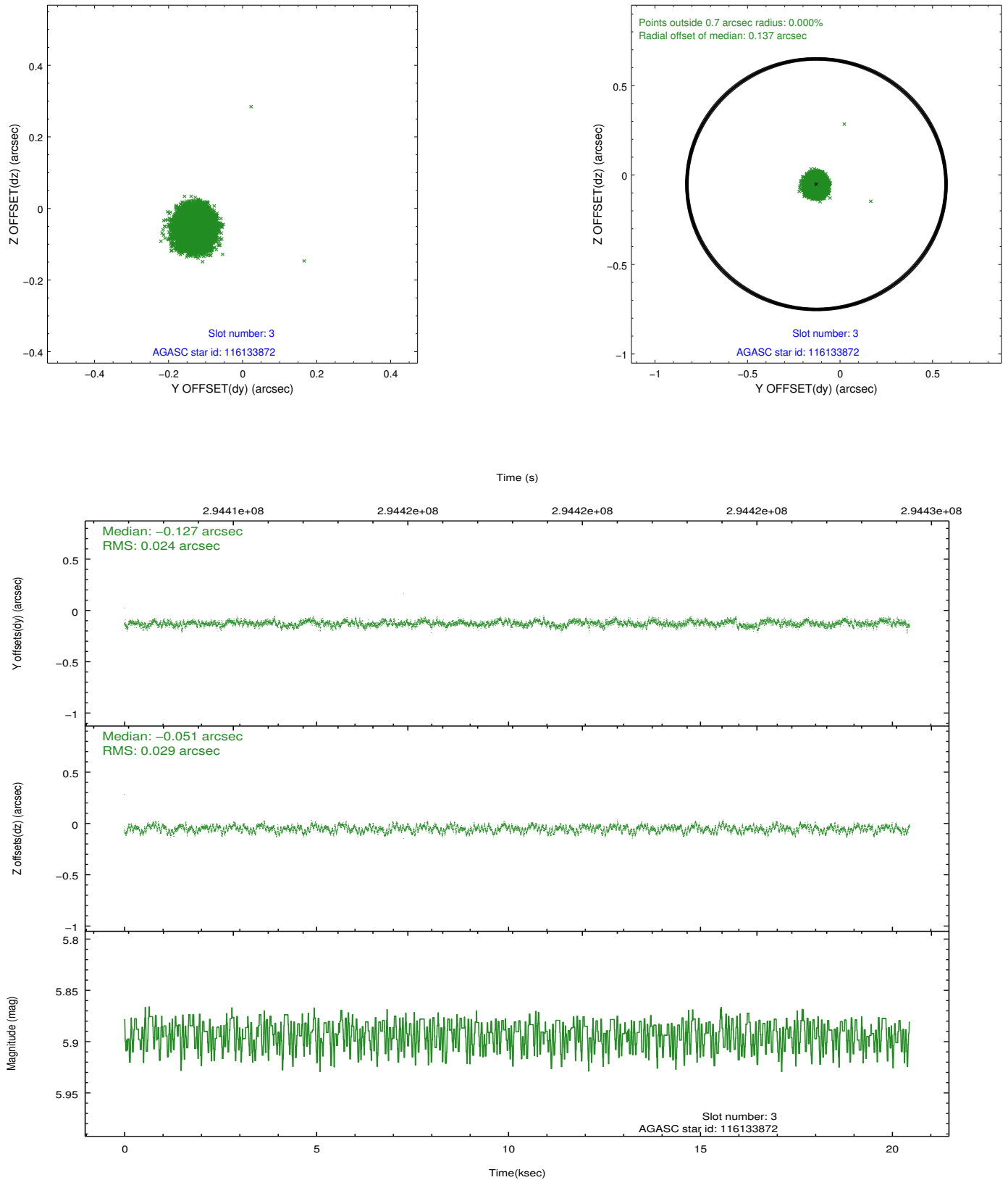


Slot Statistics

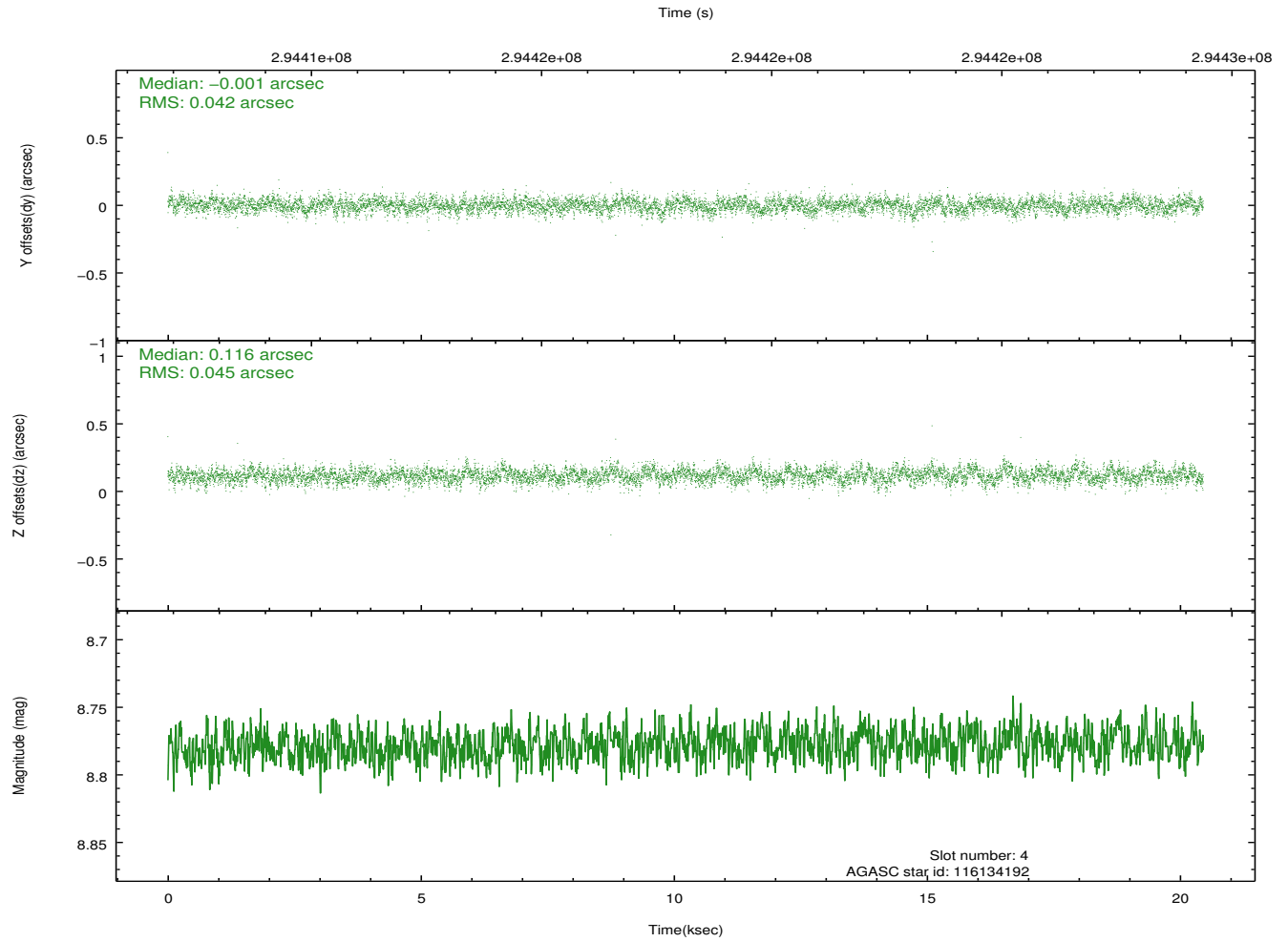
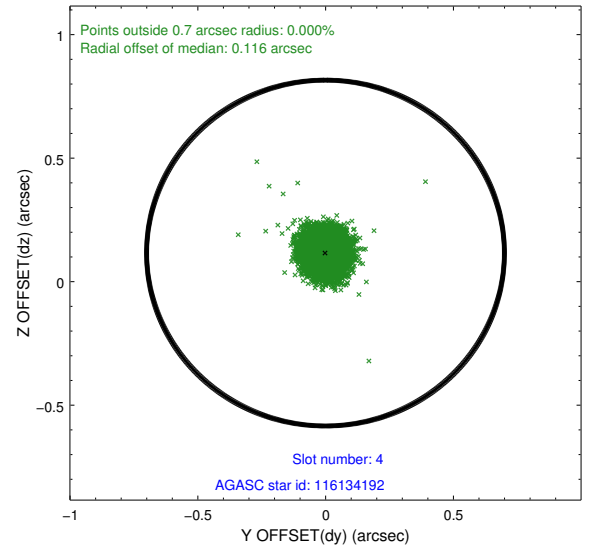
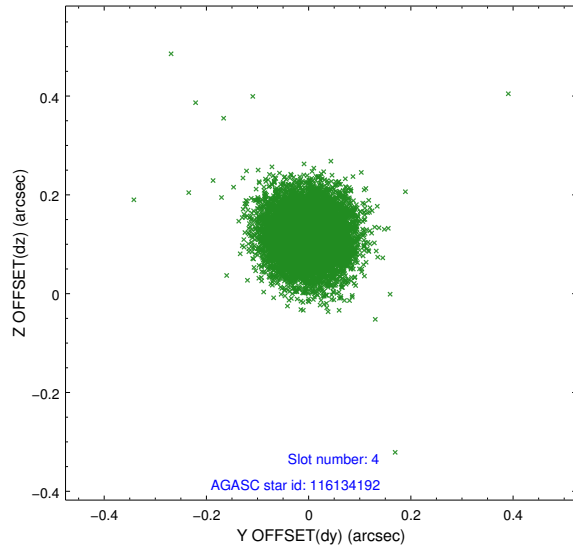
slot	status	id	mag	n_pts	med_dy	med_dz	dr1	dr2	ra	dec	mean_y	mean_z
0	FID	ACIS-I-1	7.23	4990	0.035	0.011	0.006	0.011	0.000000	0.000000	925.65	-837.63
1	FID	ACIS-I-5	7.22	4988	-0.226	0.040	0.006	0.011	0.000000	0.000000	-1822.63	1059.78
2	FID	ACIS-I-6	7.24	4990	0.099	0.019	0.007	0.012	0.000000	0.000000	391.04	1704.48
3	GUIDE	116133872	5.89	9979	-0.127	-0.051	0.041	0.064	195.999055	11.230683	2080.49	367.98
4	GUIDE	116134192	8.78	9975	-0.001	0.116	0.064	0.105	195.747786	11.879991	1270.83	-1996.80
5	GUIDE	116137152	8.79	9975	0.028	0.031	0.091	0.150	195.859909	11.979874	737.32	-2021.64
6	GUIDE	116262664	8.43	9976	0.143	-0.103	0.066	0.109	196.809372	11.278433	-234.25	2057.58
7	GUIDE	116269840	8.57	9967	-0.044	0.008	0.100	0.157	196.648831	11.044537	740.33	2346.39

2.4 Star Slots

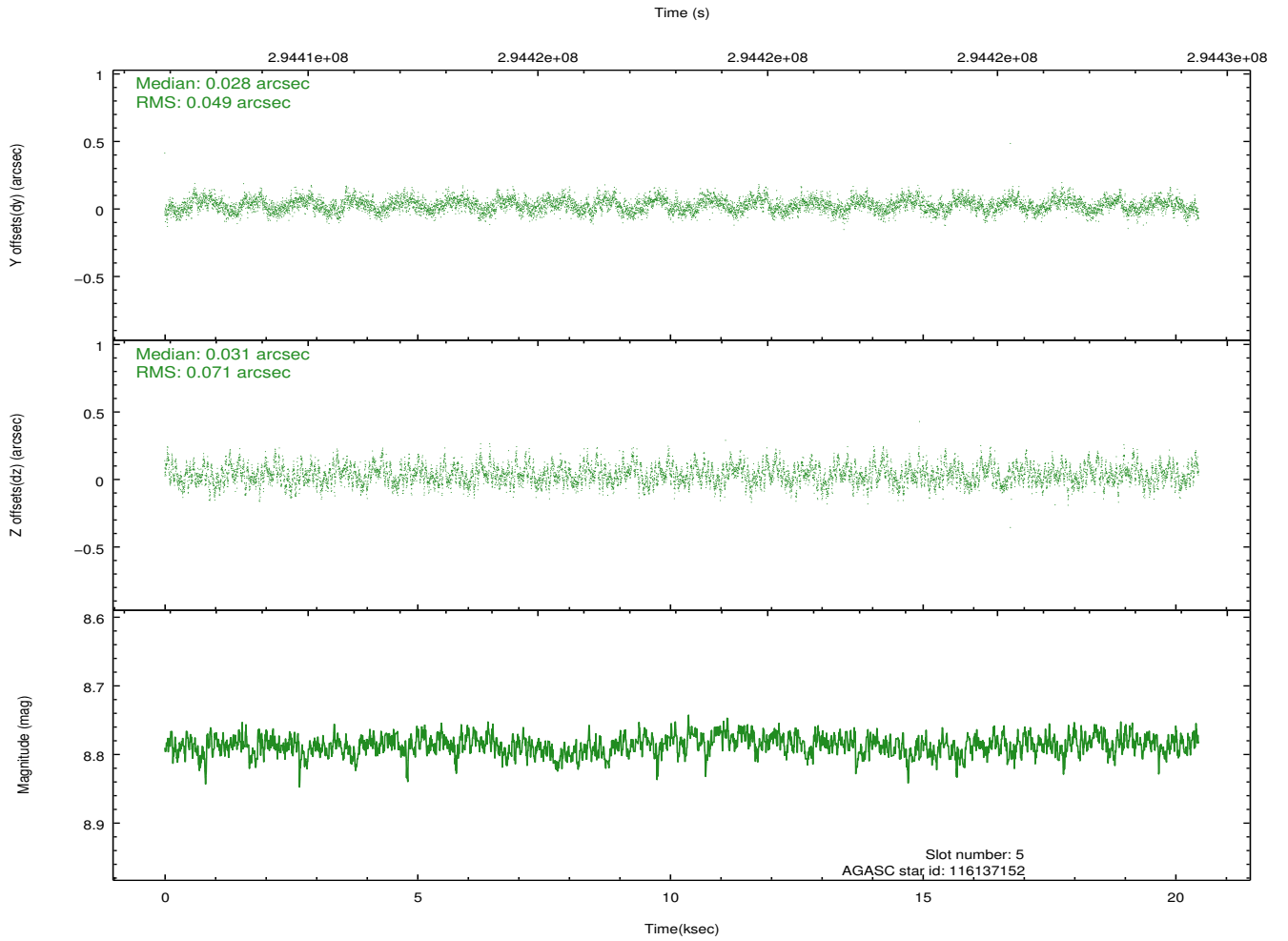
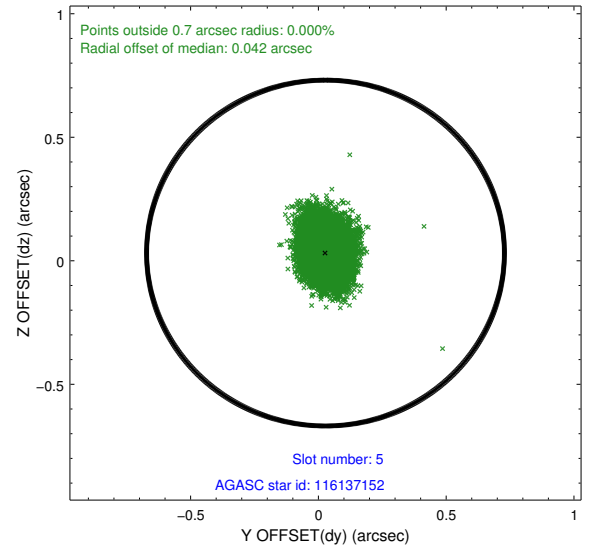
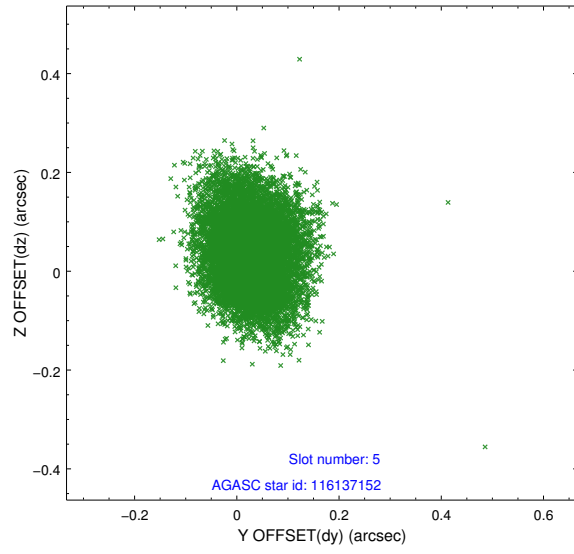
2.4.1 Slot 3



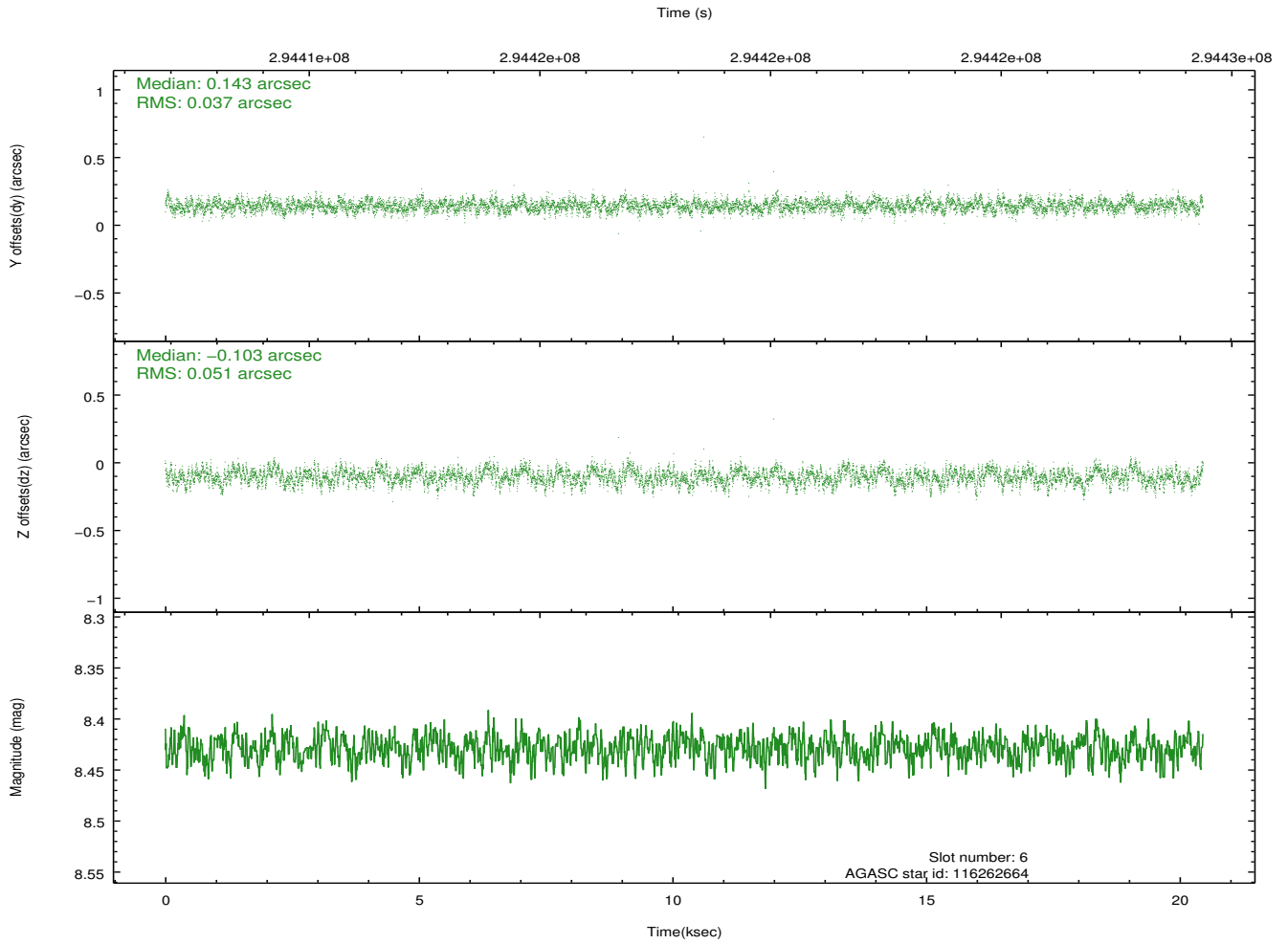
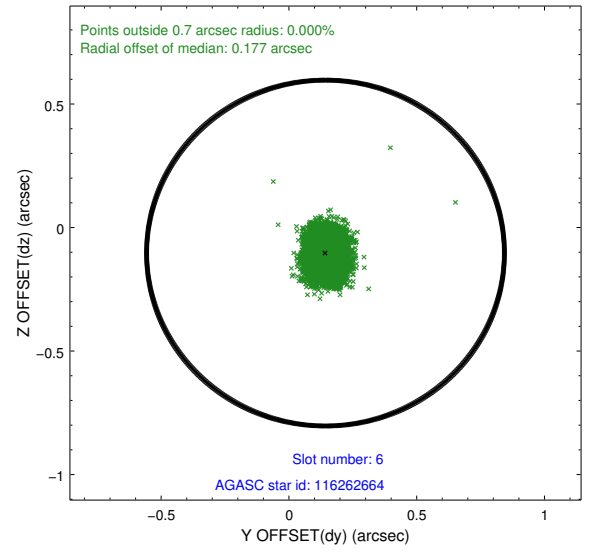
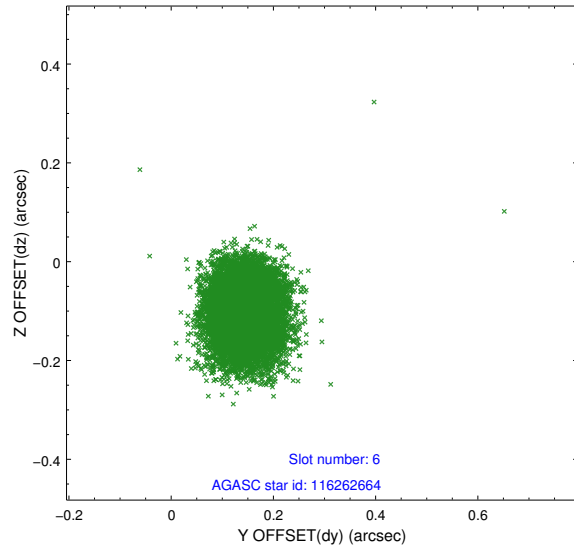
2.4.2 Slot 4



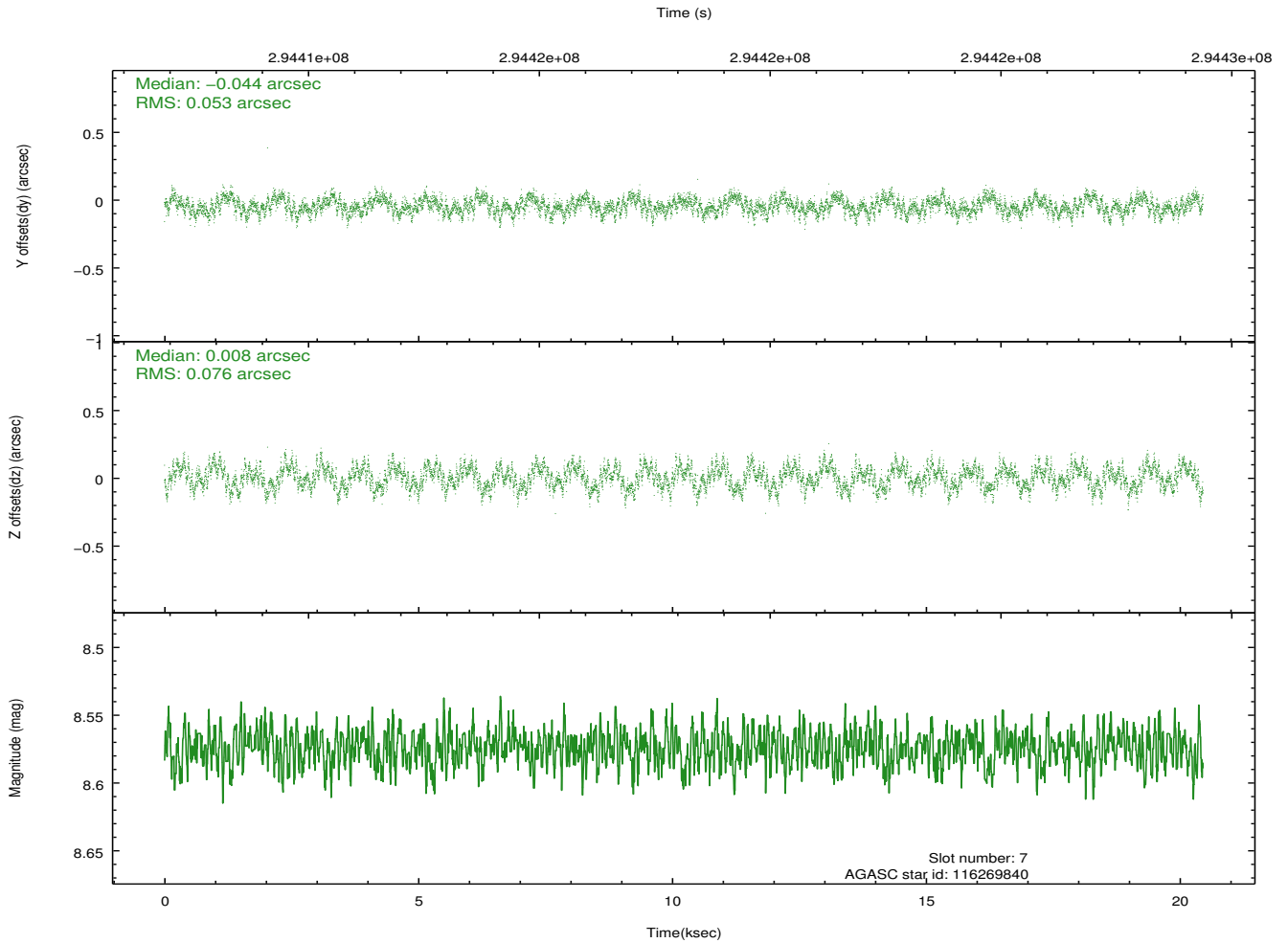
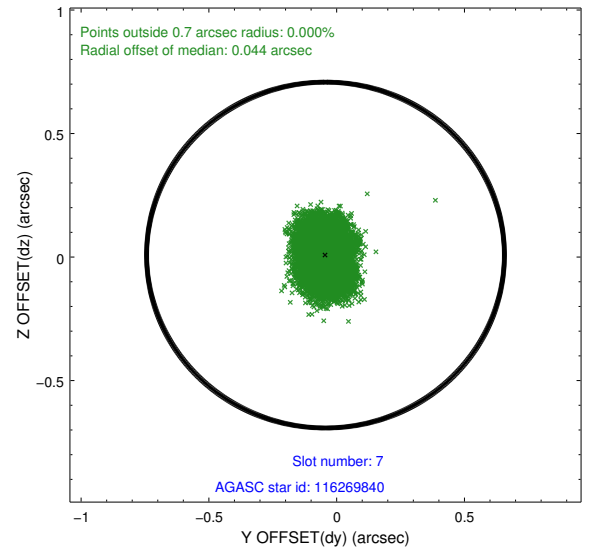
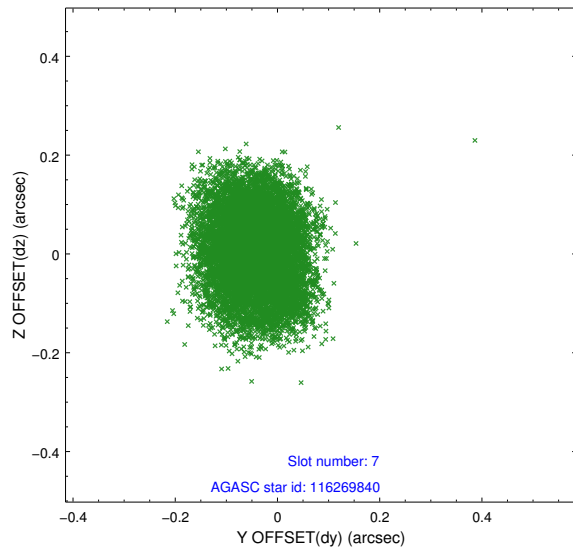
2.4.3 Slot 5



2.4.4 Slot 6

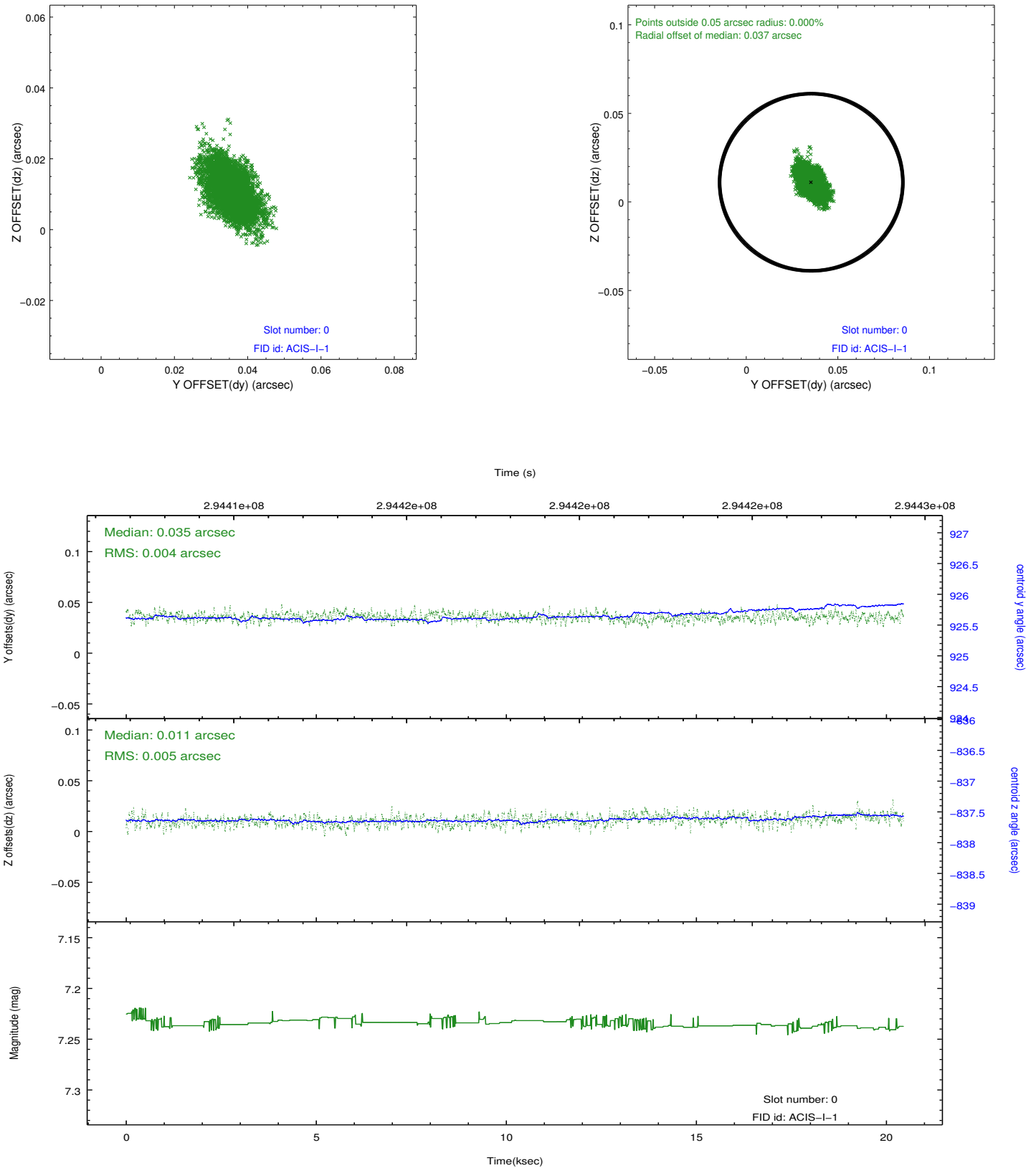


2.4.5 Slot 7

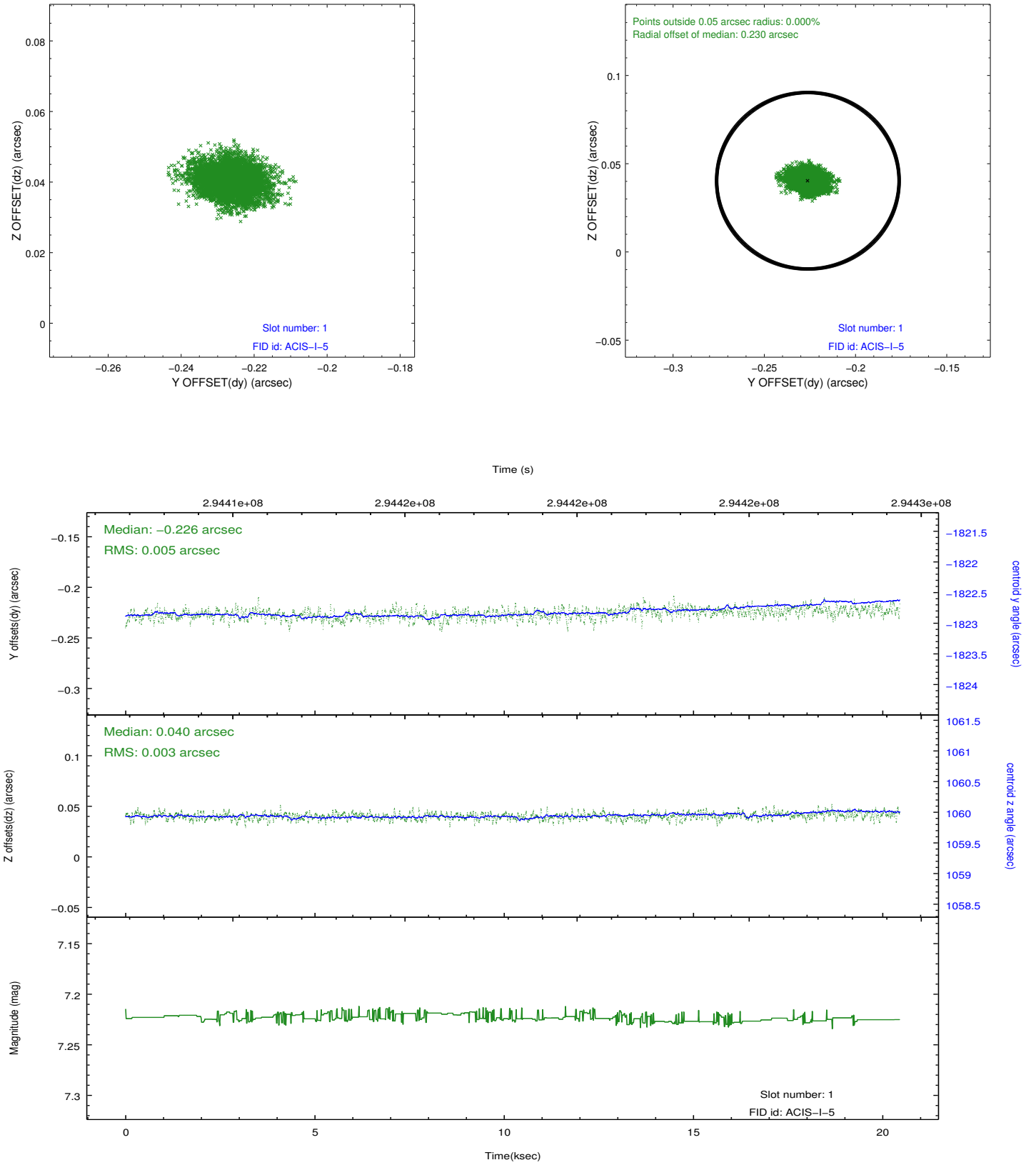


2.5 FID Slots

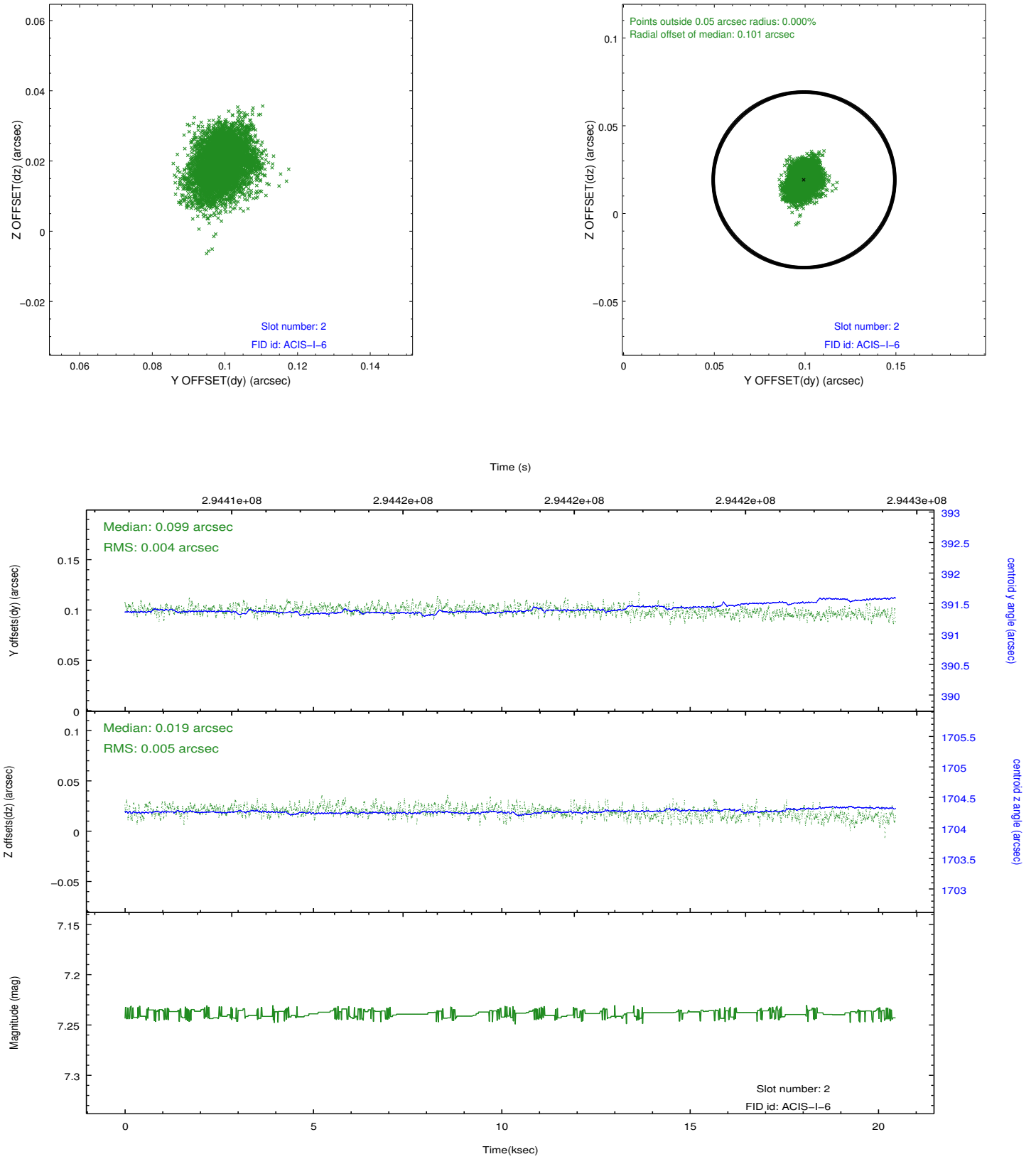
2.5.1 Slot 0



2.5.2 Slot 1



2.5.3 Slot 2



A Summary

A.1 Status

V&V Scientist	Beth Sundheim
V&V Date (YYYY-MM-DD)	2012.04.24
V&V Edition	1
V&V Disposition and Status	OK
V&V Charge Time	20.0415999

A.2 Comments